

Data Path : Z:\pestpcbsrv\HPCHEM1\ECD_S\Data\PS072225\
 Data File : PS031177.D
 Signal(s) : Signal #1: ECD1A.ch Signal #2: ECD2B.ch
 Acq On : 22 Jul 2025 15:16
 Operator : AR\AJ
 Sample : HSTDCCC750
 Misc :
 ALS Vial : 3 Sample Multiplier: 1

Instrument :
 ECD_S
 ClientSampleId :
 HSTDCCC750

Integration File signal 1: autoint1.e
 Integration File signal 2: autoint2.e
 Quant Time: Jul 23 01:54:44 2025
 Quant Method : Z:\pestpcbsrv\HPCHEM1\ECD_S\Method\PS072125.M
 Quant Title : 8080.M
 QLast Update : Tue Jul 22 03:18:42 2025
 Response via : Initial Calibration
 Integrator: ChemStation

Volume Inj. : 1 µl
 Signal #1 Phase : ZB-MR1 Signal #2 Phase: ZB-MR2
 Signal #1 Info : 30M x 0.32mm x0.5 Signal #2 Info : 30M x 0.32mm x 0.25µm

Compound	RT#1	RT#2	Resp#1	Resp#2	ng/ml	ng/ml

System Monitoring Compounds						
4) S 2,4-DCAA	7.323	7.764	3291.0E6	749.3E6	756.860	738.237
Target Compounds						
1) T Dalapon	2.687	2.702	4201.7E6	1876.3E6	669.818	661.424
2) T 3,5-DICHL...	6.485	6.711	3870.7E6	1048.2E6	700.857	680.725
3) T 4-Nitroph...	7.121	7.298	1215.0E6	1231.4E6	736.912	680.599
5) T DICAMBA	7.511	7.966	11833.1E6	4588.5E6	717.287	711.024
6) T MCPP	7.693	8.065	756.1E6	148.6E6	75.539	71.535
7) T MCPA	7.843	8.315	922.0E6	217.9E6	73.677	69.069
8) T DICHLORPROP	8.222	8.685	2682.2E6	1044.0E6	701.798	689.193
9) T 2,4-D	8.454	9.022	2758.9E6	1180.2E6	738.670	694.927
10) T Pentachlo...	8.762	9.545	41420.3E6	28763.5E6	758.315	735.993
11) T 2,4,5-TP ...	9.339	9.927	16059.2E6	10665.9E6	731.505	716.109
12) T 2,4,5-T	9.633	10.353	14930.0E6	10177.5E6	764.550	715.746
13) T 2,4-DB	10.209	10.921	2337.9E6	838.8E6	781.922	716.623
14) T DINOSEB	11.423	11.305	11179.9E6	7961.4E6	718.063	704.420
15) T Picloram	11.234	12.416	15738.8E6	18011.8E6	786.679	723.508
16) T DCPA	11.722	12.350	21143.1E6	16642.8E6	736.860	722.469

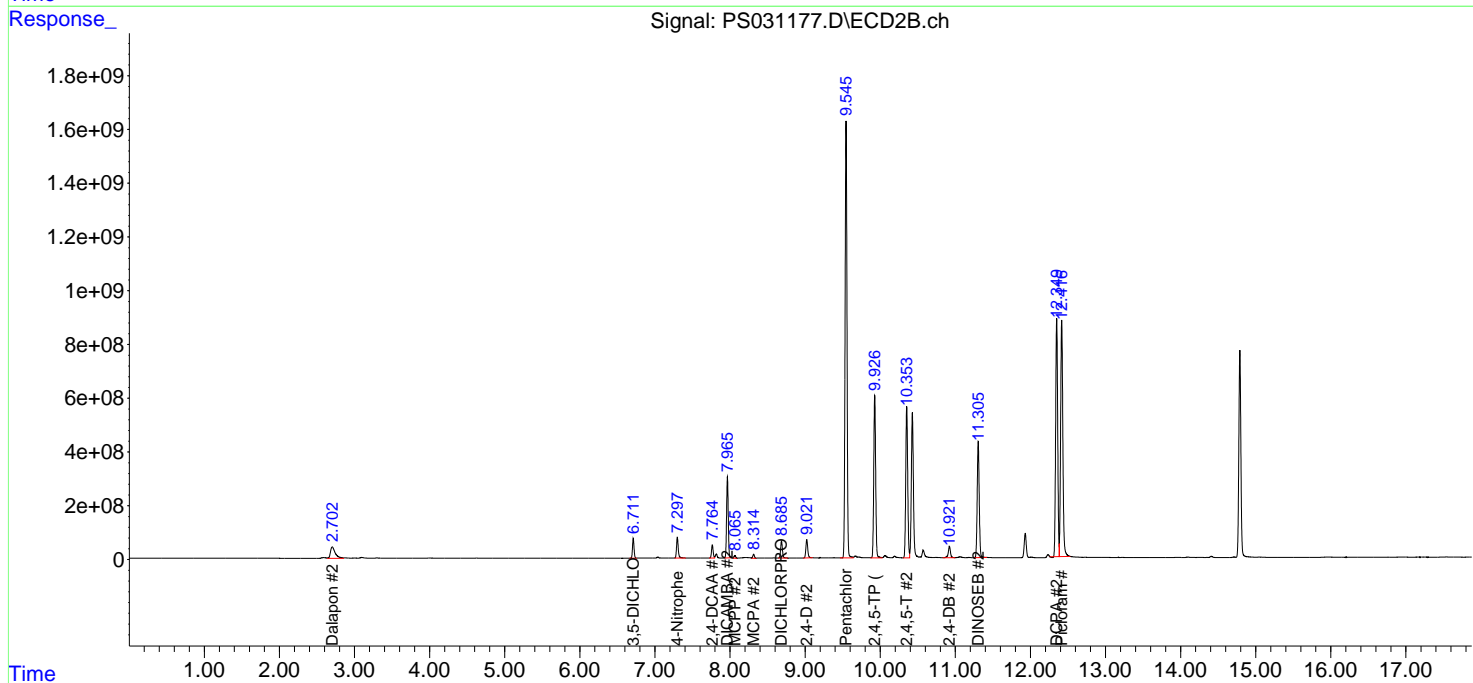
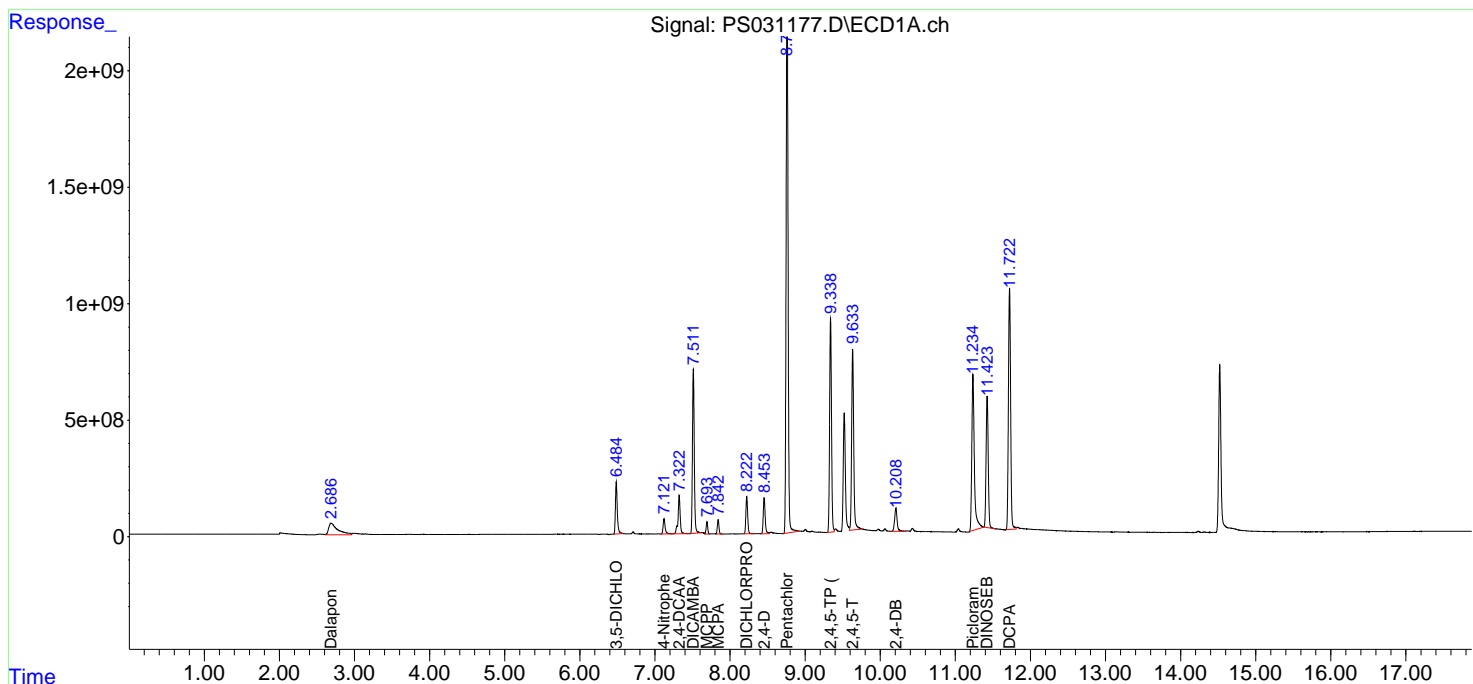
(f)=RT Delta > 1/2 Window (#)=Amounts differ by > 25% (m)=manual int.

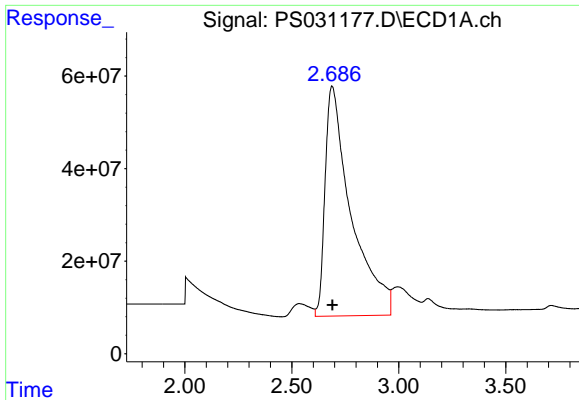
Data Path : Z:\pestpcbsrv\HPCHEM1\ECD_S\Data\PS072225\
 Data File : PS031177.D
 Signal(s) : Signal #1: ECD1A.ch Signal #2: ECD2B.ch
 Acq On : 22 Jul 2025 15:16
 Operator : AR\AJ
 Sample : HSTDCCC750
 Misc :
 ALS Vial : 3 Sample Multiplier: 1

Instrument :
 ECD_S
 ClientSampleId :
 HSTDCCC750

Integration File signal 1: autoint1.e
 Integration File signal 2: autoint2.e
 Quant Time: Jul 23 01:54:44 2025
 Quant Method : Z:\pestpcbsrv\HPCHEM1\ECD_S\Method\PS072125.M
 Quant Title : 8080.M
 QLast Update : Tue Jul 22 03:18:42 2025
 Response via : Initial Calibration
 Integrator: ChemStation

Volume Inj. : 1 µl
 Signal #1 Phase : ZB-MR1 Signal #2 Phase: ZB-MR2
 Signal #1 Info : 30M x 0.32mm x0.5 Signal #2 Info : 30M x 0.32mm x 0.25µm

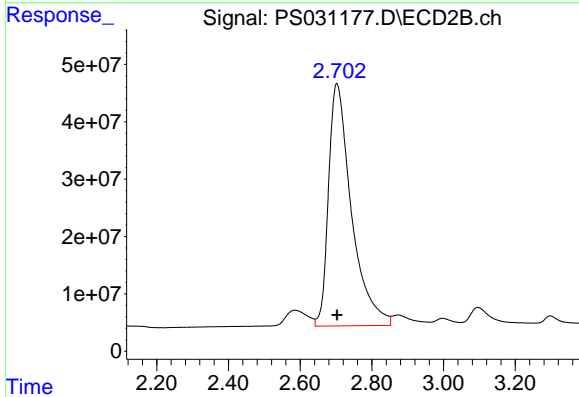




#1 Dalapon

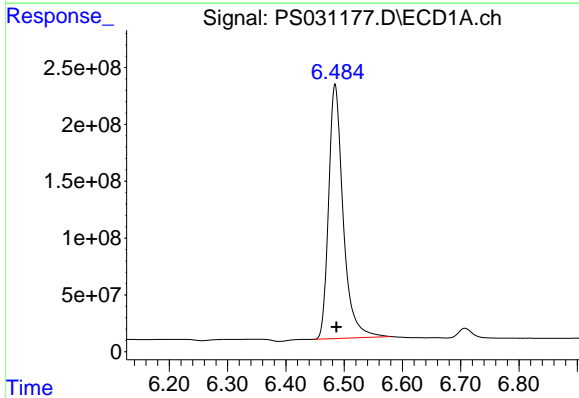
R.T.: 2.687 min
Delta R.T.: -0.003 min
Response: 4201706155
Conc: 669.82 ng/ml

Instrument :
ECD_S
ClientSampleId :
HSTDCCC750



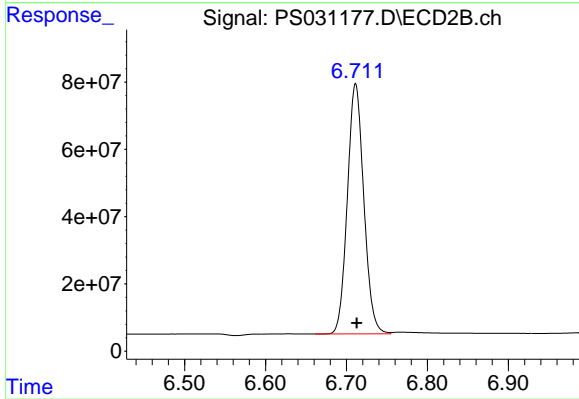
#1 Dalapon

R.T.: 2.702 min
Delta R.T.: -0.001 min
Response: 1876288111
Conc: 661.42 ng/ml



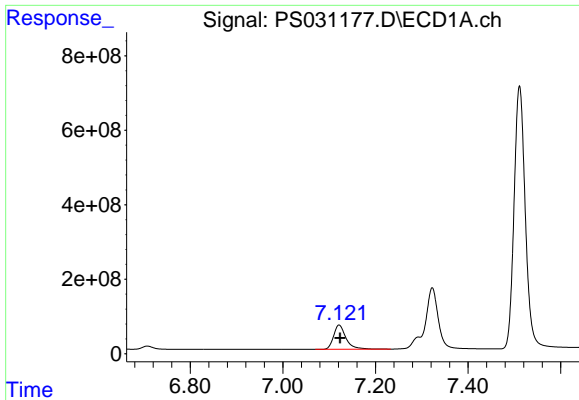
#2 3,5-DICHLOROBENZOIC ACID

R.T.: 6.485 min
Delta R.T.: -0.002 min
Response: 3870656691
Conc: 700.86 ng/ml



#2 3,5-DICHLOROBENZOIC ACID

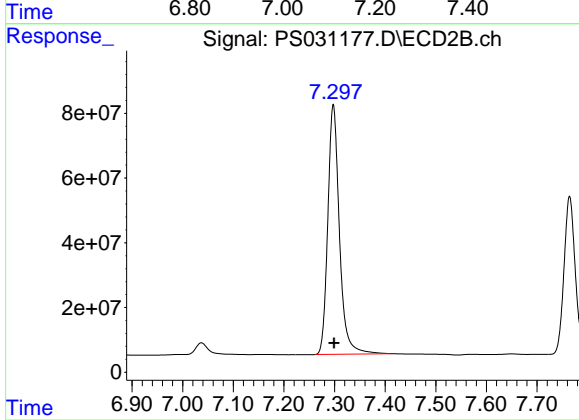
R.T.: 6.711 min
Delta R.T.: -0.002 min
Response: 1048244225
Conc: 680.72 ng/ml



#3 4-Nitrophenol

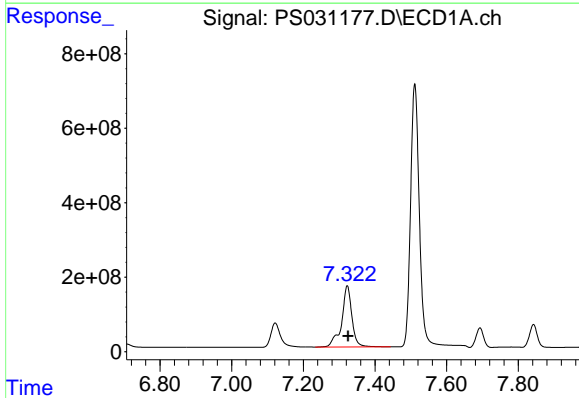
R.T.: 7.121 min
Delta R.T.: -0.003 min
Response: 1215010296
Conc: 736.91 ng/ml

Instrument :
ECD_S
ClientSampleId :
HSTDCCC750



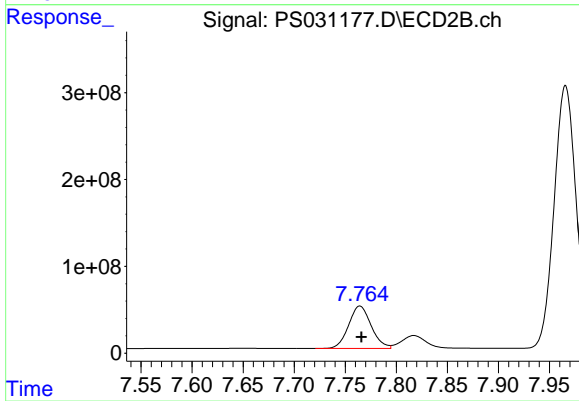
#3 4-Nitrophenol

R.T.: 7.298 min
Delta R.T.: -0.001 min
Response: 1231419373
Conc: 680.60 ng/ml



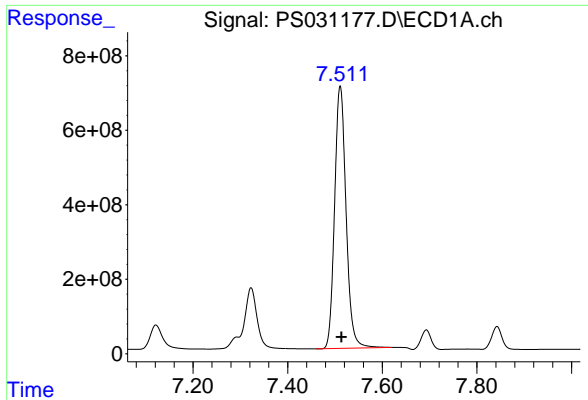
#4 2,4-DCAA

R.T.: 7.323 min
Delta R.T.: -0.002 min
Response: 3291018631
Conc: 756.86 ng/ml



#4 2,4-DCAA

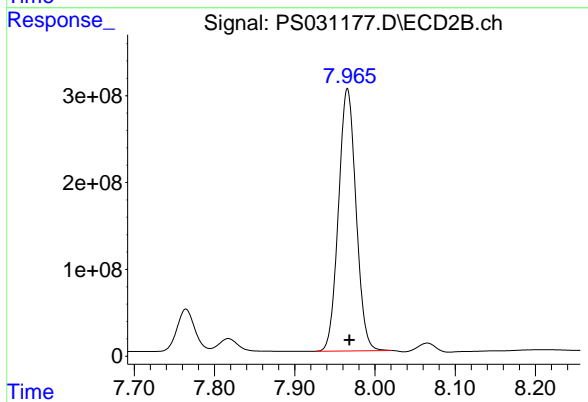
R.T.: 7.764 min
Delta R.T.: -0.002 min
Response: 749286939
Conc: 738.24 ng/ml



#5 DICAMBA

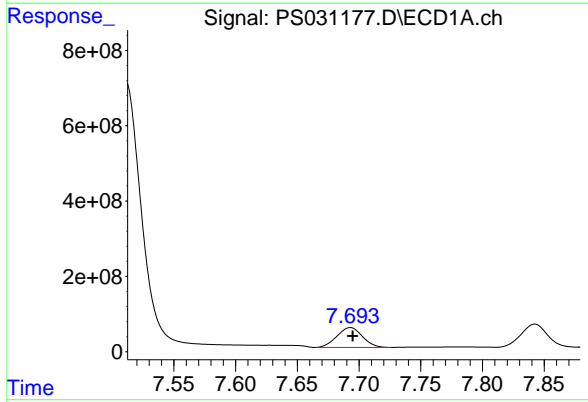
R.T.: 7.511 min
 Delta R.T.: -0.003 min
 Response: 11833060111
 Conc: 717.29 ng/ml

Instrument :
 ECD_S
 ClientSampleId :
 HSTDCCC750



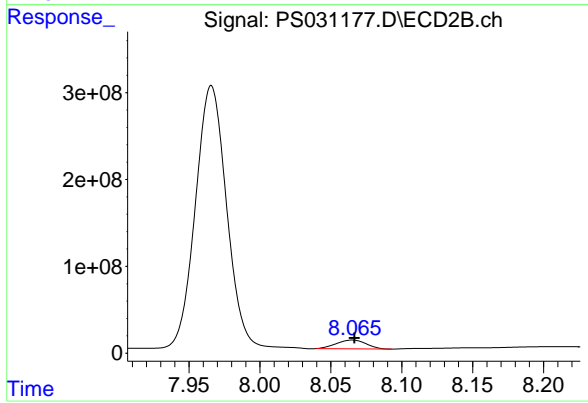
#5 DICAMBA

R.T.: 7.966 min
 Delta R.T.: -0.002 min
 Response: 4588501579
 Conc: 711.02 ng/ml



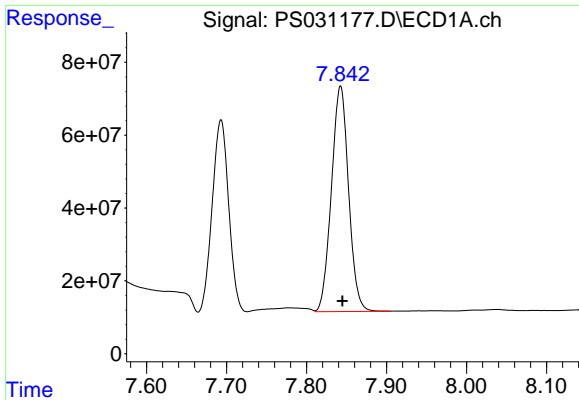
#6 MCP

R.T.: 7.693 min
 Delta R.T.: -0.002 min
 Response: 756147423
 Conc: 75.54 ug/ml



#6 MCP

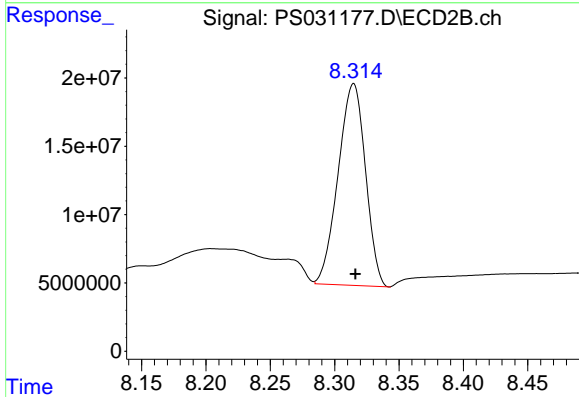
R.T.: 8.065 min
 Delta R.T.: -0.002 min
 Response: 148635108
 Conc: 71.53 ug/ml



#7 MCPA

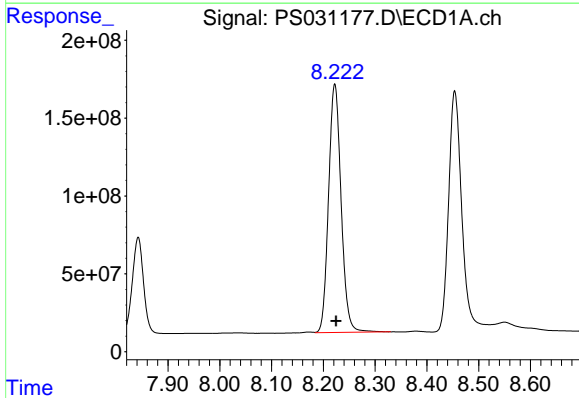
R.T.: 7.843 min
 Delta R.T.: -0.002 min
 Response: 922007654
 Conc: 73.68 ug/ml

Instrument :
 ECD_S
 ClientSampleId :
 HSTDCCC750



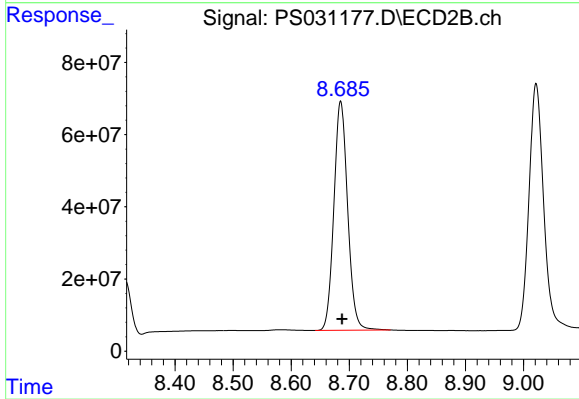
#7 MCPA

R.T.: 8.315 min
 Delta R.T.: -0.002 min
 Response: 217927091
 Conc: 69.07 ug/ml



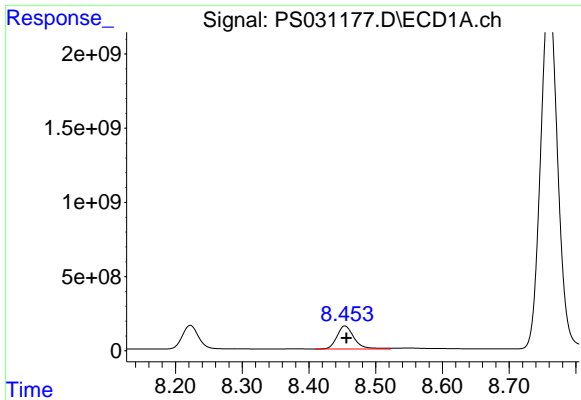
#8 DICHLORPROP

R.T.: 8.222 min
 Delta R.T.: -0.002 min
 Response: 2682239905
 Conc: 701.80 ng/ml



#8 DICHLORPROP

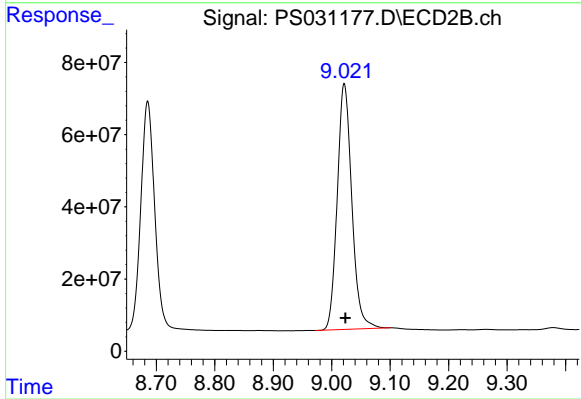
R.T.: 8.685 min
 Delta R.T.: -0.002 min
 Response: 1044031029
 Conc: 689.19 ng/ml



#9 2,4-D

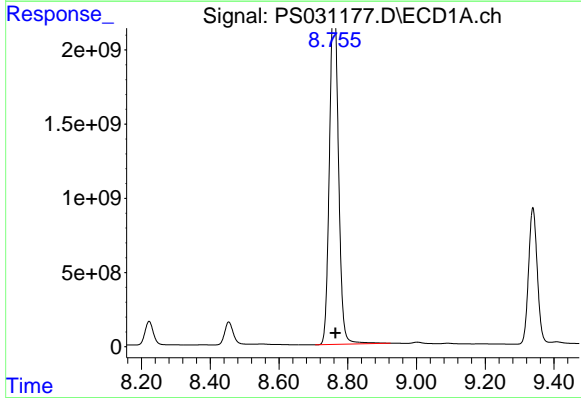
R.T.: 8.454 min
 Delta R.T.: -0.003 min
 Response: 2758869838
 Conc: 738.67 ng/ml

Instrument :
 ECD_S
 ClientSampleId :
 HSTDCCC750



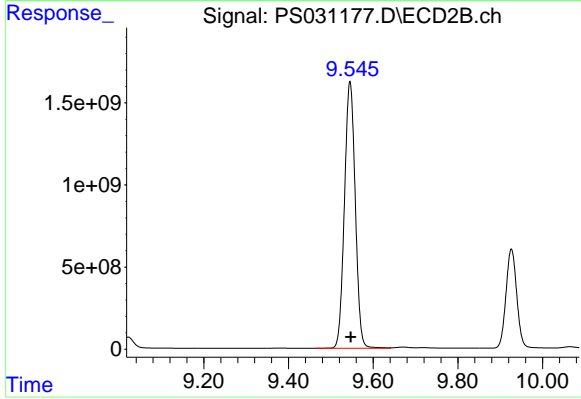
#9 2,4-D

R.T.: 9.022 min
 Delta R.T.: -0.002 min
 Response: 1180207717
 Conc: 694.93 ng/ml



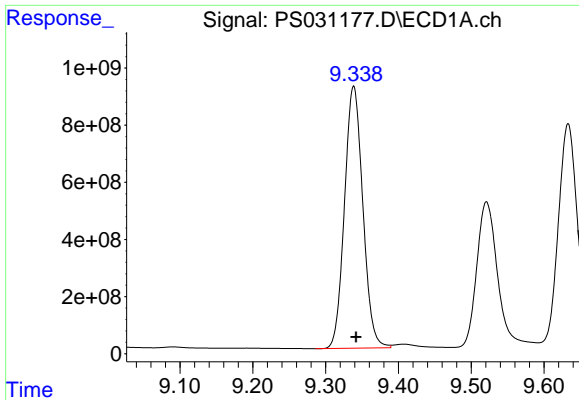
#10 Pentachlorophenol

R.T.: 8.762 min
 Delta R.T.: -0.002 min
 Response: 41420320313
 Conc: 758.31 ng/ml



#10 Pentachlorophenol

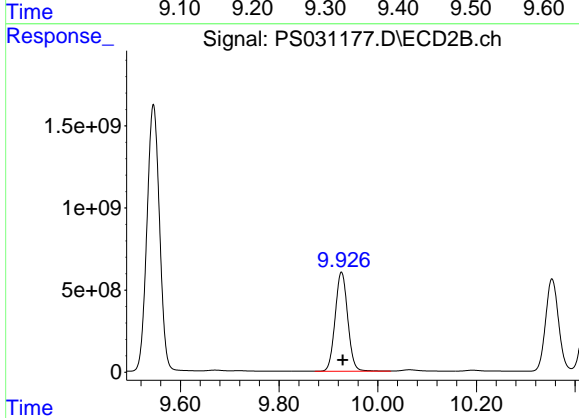
R.T.: 9.545 min
 Delta R.T.: -0.002 min
 Response: 28763478242
 Conc: 735.99 ng/ml



#11 2,4,5-TP (SILVEX)

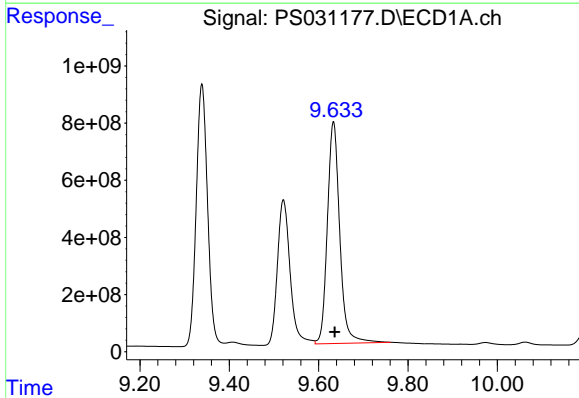
R.T.: 9.339 min
 Delta R.T.: -0.003 min
 Response: 16059152709
 Conc: 731.51 ng/ml

Instrument :
 ECD_S
 ClientSampleId :
 HSTDCCC750



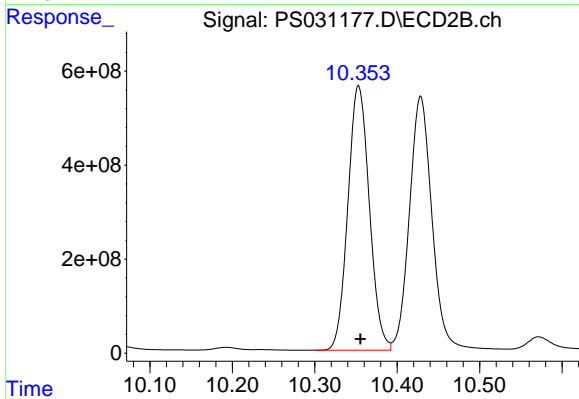
#11 2,4,5-TP (SILVEX)

R.T.: 9.927 min
 Delta R.T.: -0.002 min
 Response: 10665855540
 Conc: 716.11 ng/ml



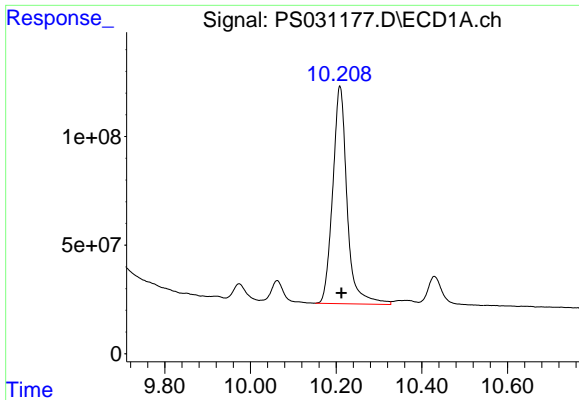
#12 2,4,5-T

R.T.: 9.633 min
 Delta R.T.: -0.003 min
 Response: 14929985217
 Conc: 764.55 ng/ml



#12 2,4,5-T

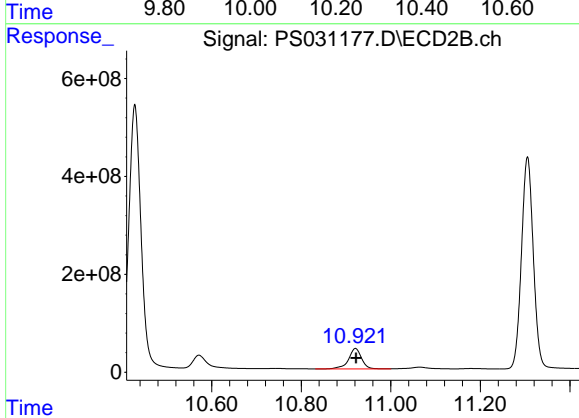
R.T.: 10.353 min
 Delta R.T.: -0.002 min
 Response: 10177525497
 Conc: 715.75 ng/ml



#13 2,4-DB

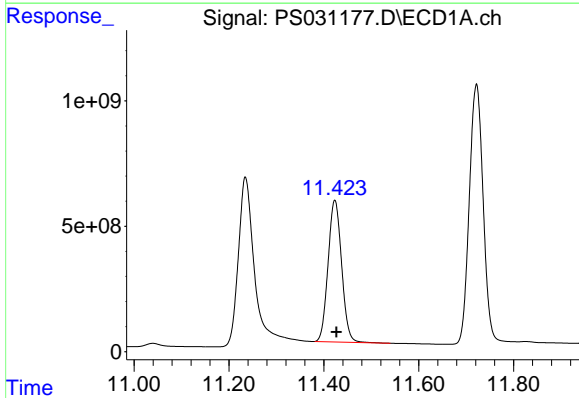
R.T.: 10.209 min
 Delta R.T.: -0.004 min
 Response: 2337857239
 Conc: 781.92 ng/ml

Instrument :
 ECD_S
 ClientSampleId :
 HSTDCCC750



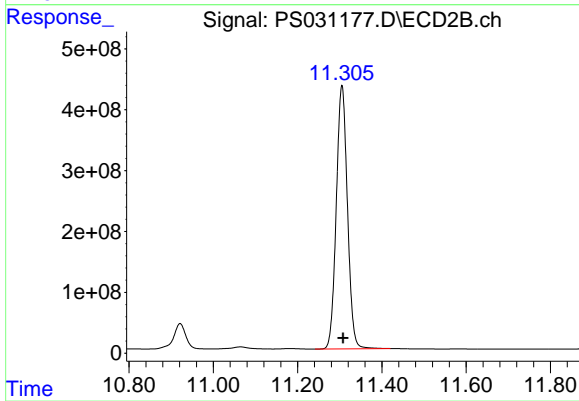
#13 2,4-DB

R.T.: 10.921 min
 Delta R.T.: -0.002 min
 Response: 838815663
 Conc: 716.62 ng/ml



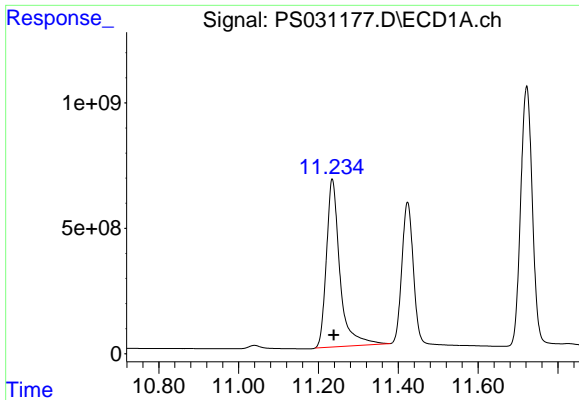
#14 DINOSEB

R.T.: 11.423 min
 Delta R.T.: -0.003 min
 Response: 11179872292
 Conc: 718.06 ng/ml



#14 DINOSEB

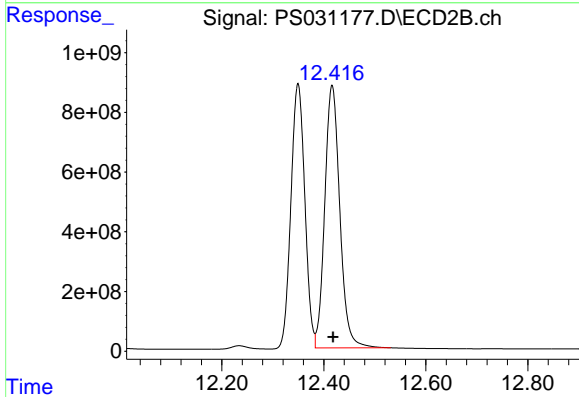
R.T.: 11.305 min
 Delta R.T.: -0.003 min
 Response: 7961411766
 Conc: 704.42 ng/ml



#15 Picloram

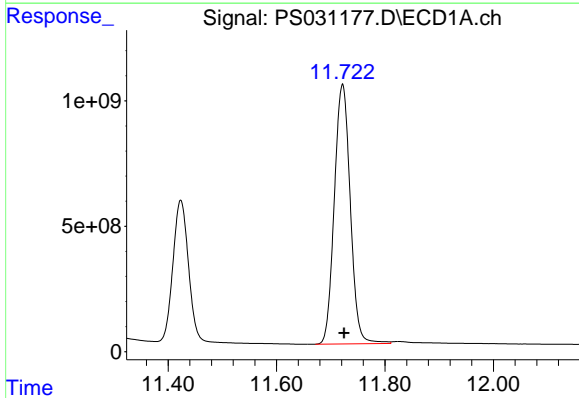
R.T.: 11.234 min
 Delta R.T.: -0.004 min
 Response: 15738765046
 Conc: 786.68 ng/ml

Instrument :
 ECD_S
 ClientSampleId :
 HSTDCCC750



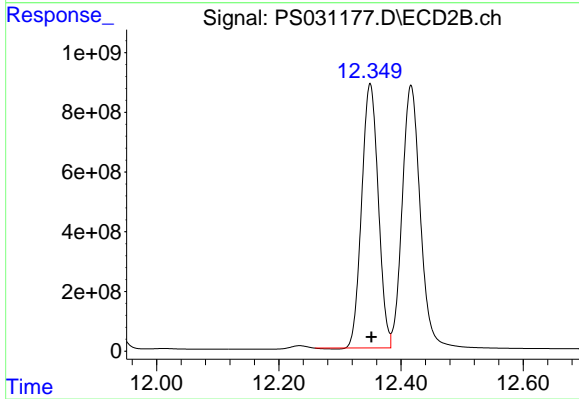
#15 Picloram

R.T.: 12.416 min
 Delta R.T.: -0.002 min
 Response: 18011758441
 Conc: 723.51 ng/ml



#16 DCPA

R.T.: 11.722 min
 Delta R.T.: -0.003 min
 Response: 21143084352
 Conc: 736.86 ng/ml



#16 DCPA

R.T.: 12.350 min
 Delta R.T.: -0.002 min
 Response: 16642829184
 Conc: 722.47 ng/ml