

Data Path : Z:\pestpcbsrv\HPCHEM1\ECD_S\Data\PS072320\
 Data File : PS011345.D
 Signal(s) : Signal #1: ECD1A.ch Signal #2: ECD2B.ch
 Acq On : 23 Jul 2020 16:35
 Operator : DD\AJ
 Sample : PB130407BL
 Misc :
 ALS Vial : 4 Sample Multiplier: 1

Instrument :
 ECD_S
 ClientSampleId :
 PB130407BL

Integration File signal 1: autoint1.e
 Integration File signal 2: autoint2.e
 Quant Time: Jul 24 03:41:26 2020
 Quant Method : Z:\pestpcbsrv\HPCHEM1\ECD_S\Method\PS071320.M
 Quant Title : 8080.M
 QLast Update : Mon Jul 13 16:10:29 2020
 Response via : Initial Calibration
 Integrator: ChemStation

Volume Inj. : 2 µl
 Signal #1 Phase : Rtx-CLPesticides Signal #2 Phase: Rtx-CLPesticides2
 Signal #1 Info : 30M x 0.32mm x0.5 Signal #2 Info : 30M x 0.32mm x 0.25µm

	Compound	RT#1	RT#2	Resp#1	Resp#2	ng/ml	ng/ml

System Monitoring Compounds							
4) S	2,4-DCAA	7.229	6.915	476.5E6	287.3E6	491.050	510.337
Target Compounds							
1) T	Dalapon	2.990	2.576	42761383	202.5E6	35.535	263.723 #
2) T	3,5-DICHL...	6.377	6.095	4469518	63943996	3.340	76.138 #
3) T	4-Nitroph...	7.004	6.525	6323358	5634168	14.344	17.184
5) T	DICAMBA	7.415	7.087	8739384	3233366	2.255	1.412 #
6) T	MCPD	0.000	7.195	0	2356879	N.D.	1.235
7) T	MCPA	7.720	7.379	14622198	14763323	3.429	5.122 #
8) T	DICHLORPROP	0.000	7.737	0	6316245	N.D.	10.493
9) T	2,4-D	0.000	7.981	0	6709047	N.D.	8.949
10) T	Pentachlo...	8.654	8.433	7754435	11337301	<MDL	1.627 #
12) T	2,4,5-T	9.504	9.179	18078022	9406472	3.583	3.101
14) T	DINOSEB	0.000	10.033	0	16921787	N.D.	7.889
15) T	Picloram	11.032	11.005	158.9E6	147.7E6	25.180	33.763 #
16) T	DCPA	11.474	10.942	6653628	11185972	1.033	2.958 #

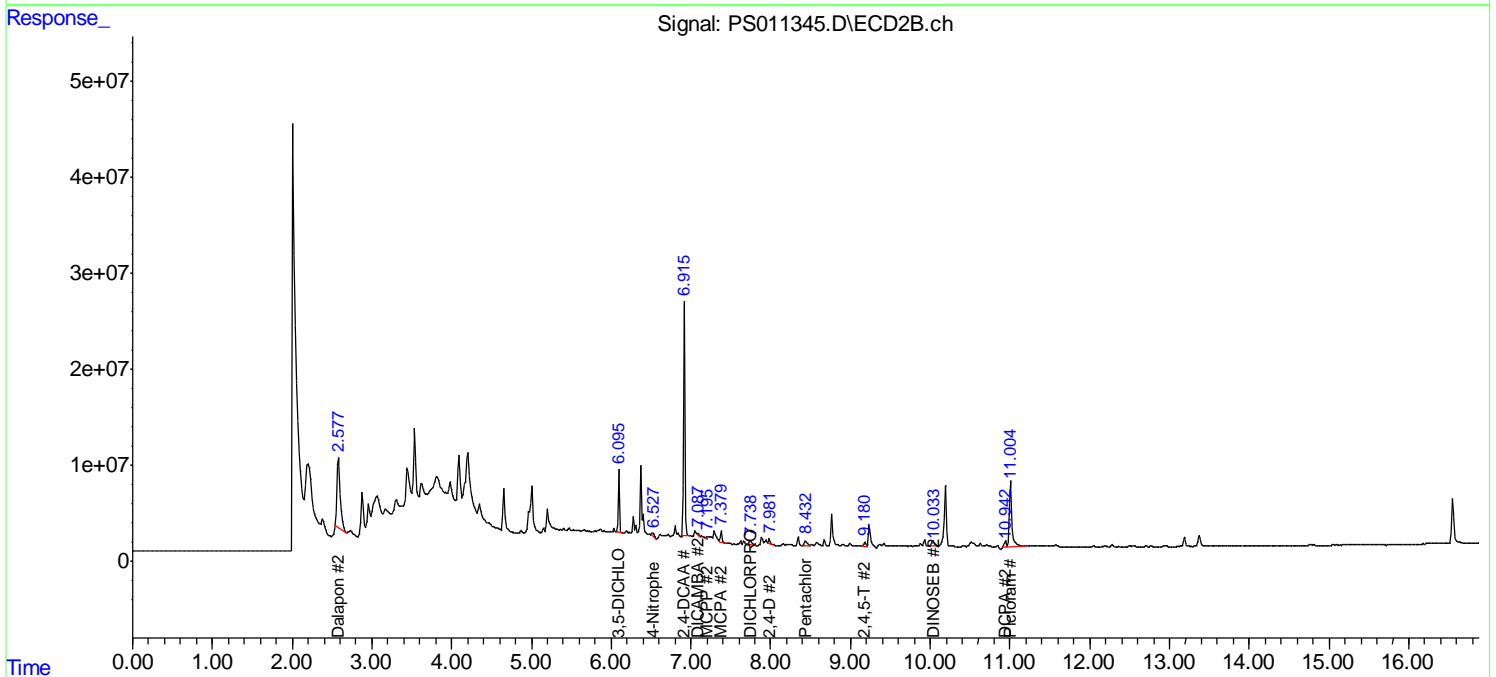
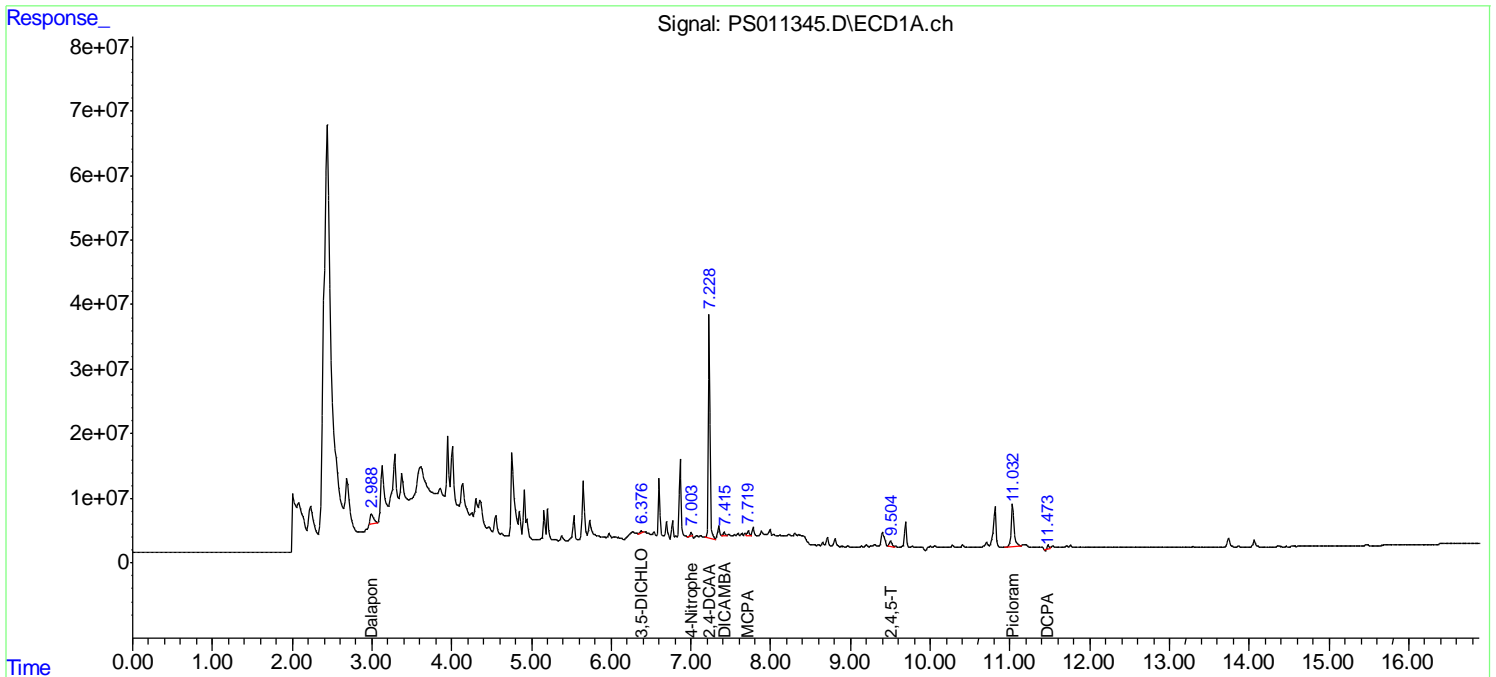
(f)=RT Delta > 1/2 Window (#)=Amounts differ by > 25% (m)=manual int.

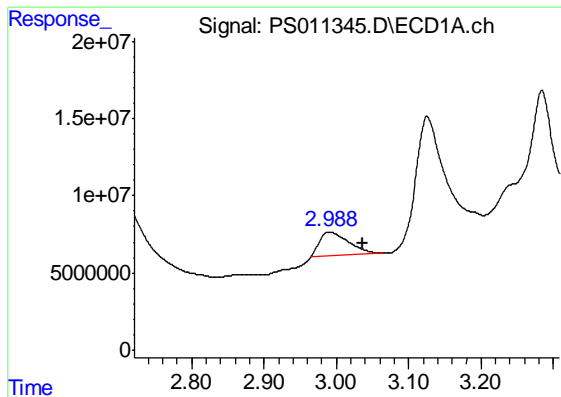
Data Path : Z:\pestpcbsrv\HPCHEM1\ECD_S\Data\PS072320\
 Data File : PS011345.D
 Signal(s) : Signal #1: ECD1A.ch Signal #2: ECD2B.ch
 Acq On : 23 Jul 2020 16:35
 Operator : DD\AJ
 Sample : PB130407BL
 Misc :
 ALS Vial : 4 Sample Multiplier: 1

Instrument :
 ECD_S
 ClientSampled :
 PB130407BL

Integration File signal 1: autoint1.e
 Integration File signal 2: autoint2.e
 Quant Time: Jul 24 03:41:26 2020
 Quant Method : Z:\pestpcbsrv\HPCHEM1\ECD_S\Method\PS071320.M
 Quant Title : 8080.M
 QLast Update : Mon Jul 13 16:10:29 2020
 Response via : Initial Calibration
 Integrator: ChemStation

Volume Inj. : 2 µl
 Signal #1 Phase : Rtx-CLPesticides Signal #2 Phase: Rtx-CLPesticides2
 Signal #1 Info : 30M x 0.32mm x0.5 Signal #2 Info : 30M x 0.32mm x 0.25µm

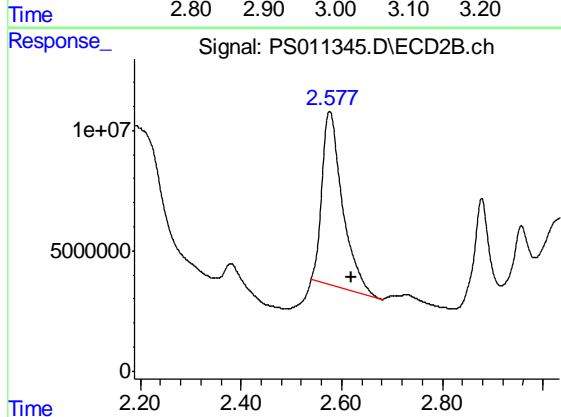




#1 Dalapon

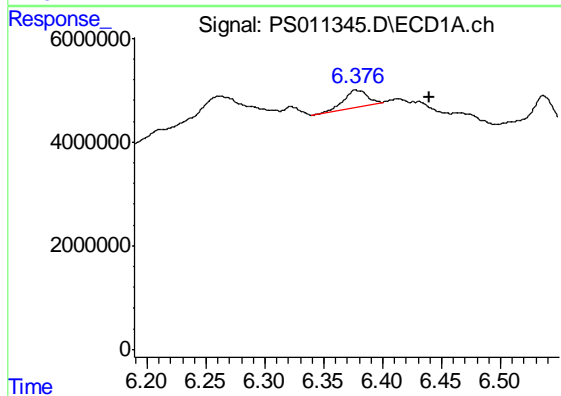
R.T.: 2.990 min
 Delta R.T.: -0.046 min
 Response: 42761383
 Conc: 35.53 ng/ml

Instrument :
 ECD_S
 ClientSampleId :
 PB130407BL



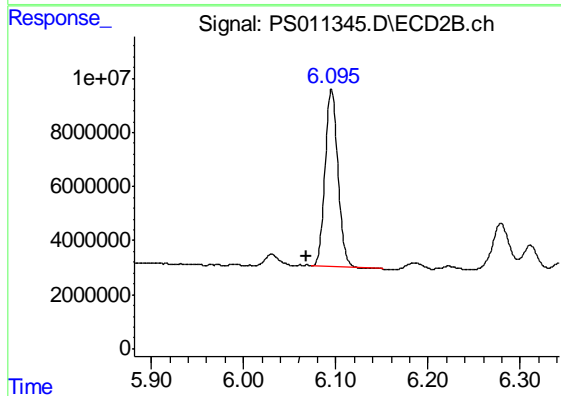
#1 Dalapon

R.T.: 2.576 min
 Delta R.T.: -0.044 min
 Response: 202452948
 Conc: 263.72 ng/ml



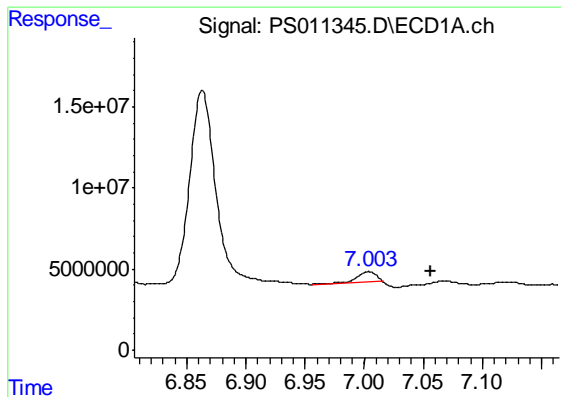
#2 3,5-DICHLOROBENZOIC ACID

R.T.: 6.377 min
 Delta R.T.: -0.062 min
 Response: 4469518
 Conc: 3.34 ng/ml



#2 3,5-DICHLOROBENZOIC ACID

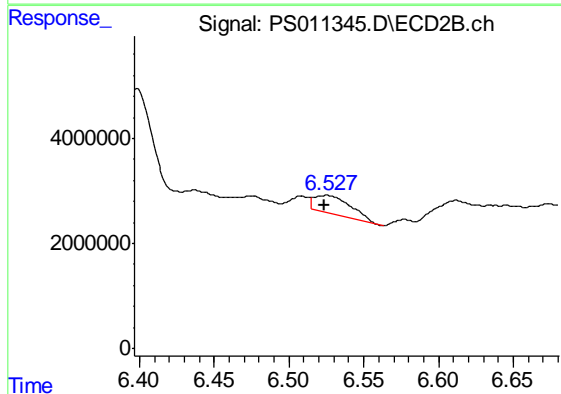
R.T.: 6.095 min
 Delta R.T.: 0.027 min
 Response: 63943996
 Conc: 76.14 ng/ml



#3 4-Nitrophenol

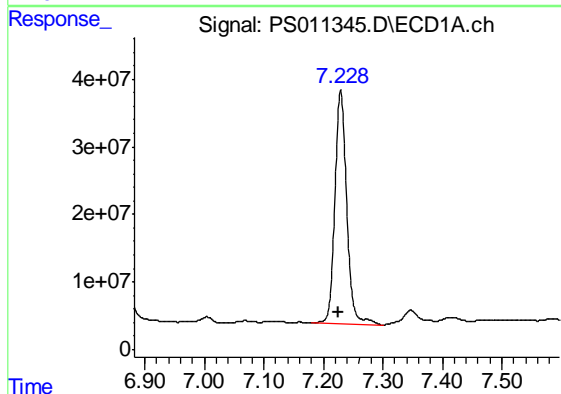
R.T.: 7.004 min
 Delta R.T.: -0.053 min
 Response: 6323358
 Conc: 14.34 ng/ml

Instrument :
 ECD_S
 ClientSampleId :
 PB130407BL



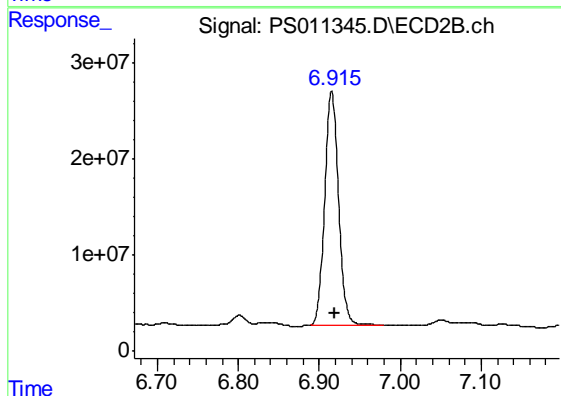
#3 4-Nitrophenol

R.T.: 6.525 min
 Delta R.T.: 0.001 min
 Response: 5634168
 Conc: 17.18 ng/ml



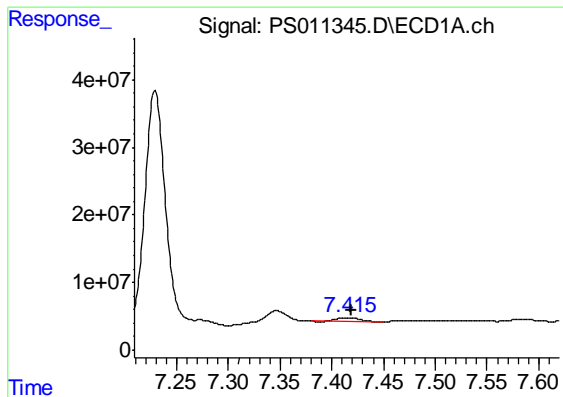
#4 2,4-DCAA

R.T.: 7.229 min
 Delta R.T.: 0.003 min
 Response: 476484628
 Conc: 491.05 ng/ml



#4 2,4-DCAA

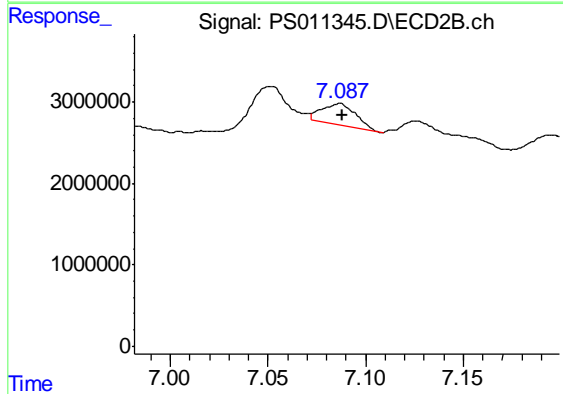
R.T.: 6.915 min
 Delta R.T.: -0.003 min
 Response: 287331010
 Conc: 510.34 ng/ml



#5 DICAMBA

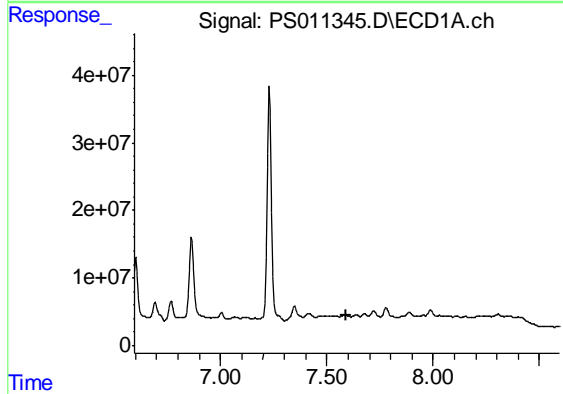
R.T.: 7.415 min
 Delta R.T.: -0.003 min
 Response: 8739384
 Conc: 2.25 ng/ml

Instrument :
 ECD_S
 ClientSampleId :
 PB130407BL



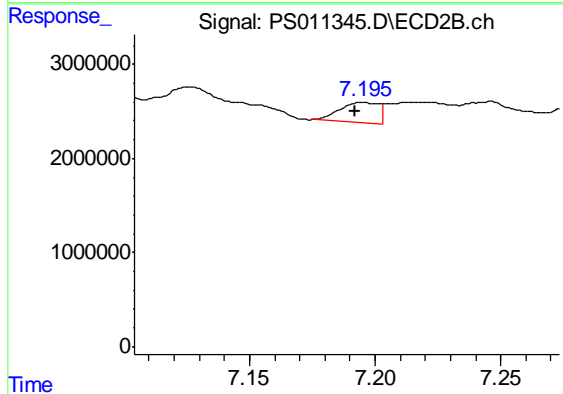
#5 DICAMBA

R.T.: 7.087 min
 Delta R.T.: -0.001 min
 Response: 3233366
 Conc: 1.41 ng/ml



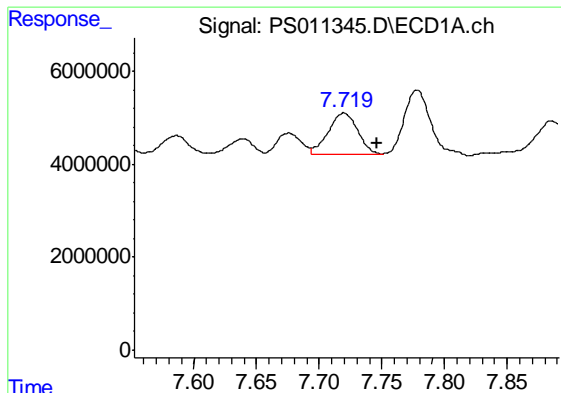
#6 MCPP

R.T.: 0.000 min
 Exp R.T. : 7.594 min
 Response: 0
 Conc: N.D.



#6 MCPP

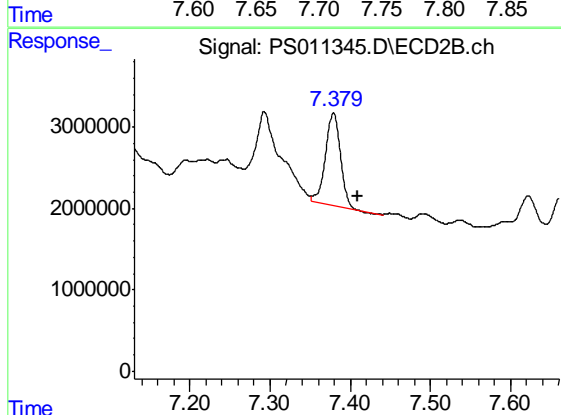
R.T.: 7.195 min
 Delta R.T.: 0.003 min
 Response: 2356879
 Conc: 1.24 ug/ml



#7 MCPA

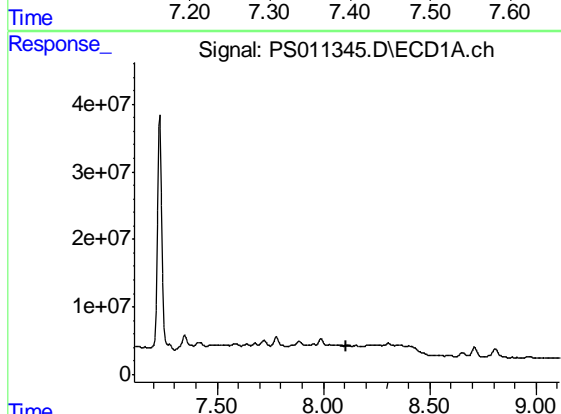
R.T.: 7.720 min
 Delta R.T.: -0.026 min
 Response: 14622198
 Conc: 3.43 ug/ml

Instrument :
 ECD_S
 ClientSampleId :
 PB130407BL



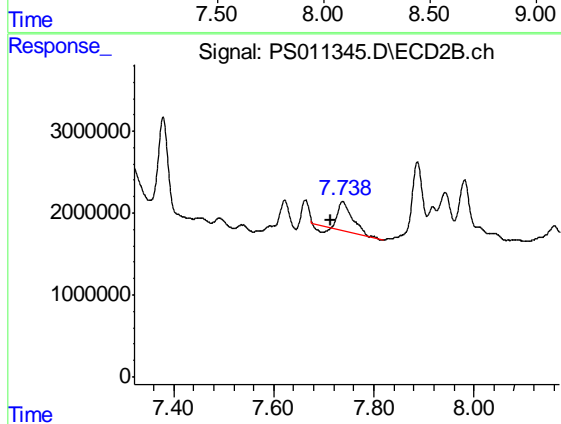
#7 MCPA

R.T.: 7.379 min
 Delta R.T.: -0.031 min
 Response: 14763323
 Conc: 5.12 ug/ml



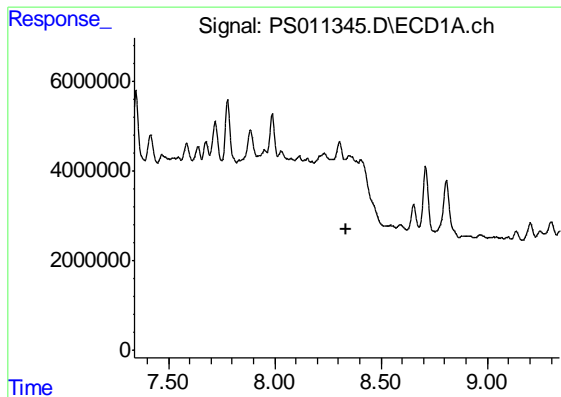
#8 DICHLORPROP

R.T.: 0.000 min
 Exp R.T. : 8.110 min
 Response: 0
 Conc: N.D.



#8 DICHLORPROP

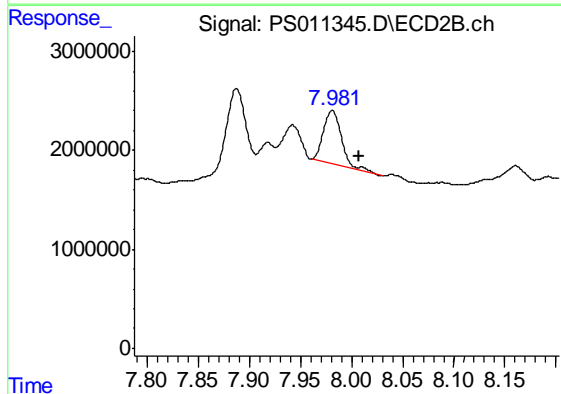
R.T.: 7.737 min
 Delta R.T.: 0.024 min
 Response: 6316245
 Conc: 10.49 ng/ml



#9 2,4-D

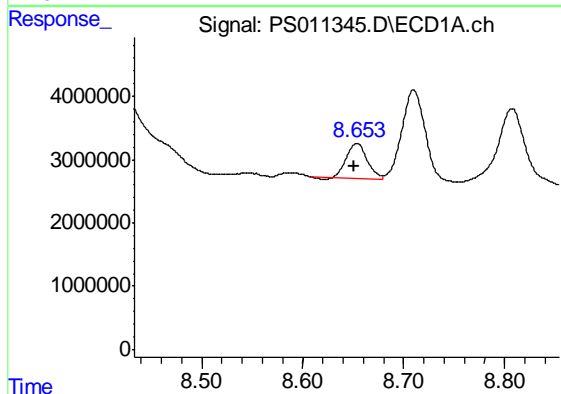
R.T.: 0.000 min
 Exp R.T. : 8.339 min
 Response: 0
 Conc: N.D.

Instrument :
 ECD_S
 ClientSampleId :
 PB130407BL



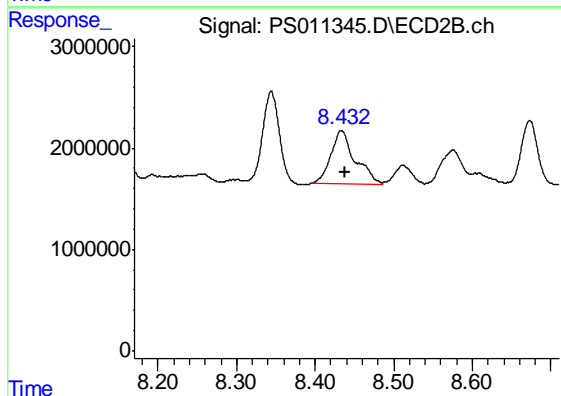
#9 2,4-D

R.T.: 7.981 min
 Delta R.T.: -0.026 min
 Response: 6709047
 Conc: 8.95 ng/ml



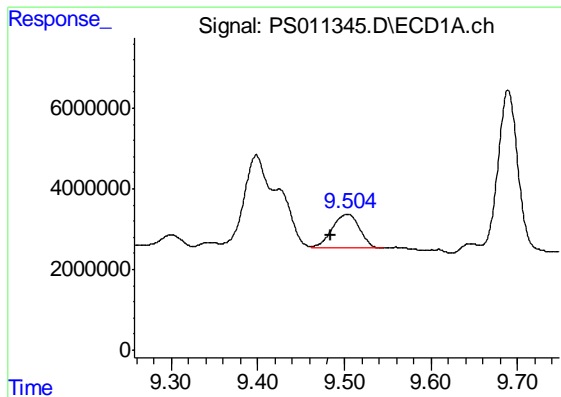
#10 Pentachlorophenol

R.T.: 8.654 min
 Delta R.T.: 0.002 min
 Response: 7754435
 Conc: N.D.



#10 Pentachlorophenol

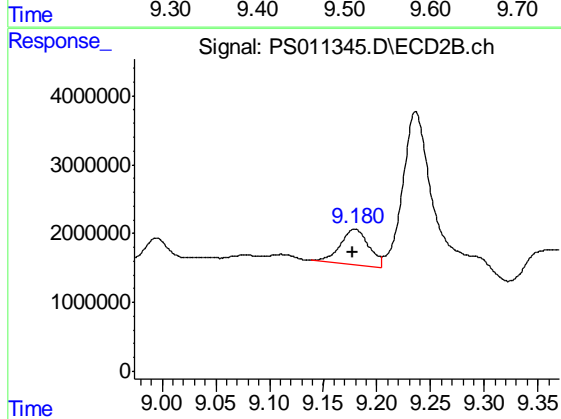
R.T.: 8.433 min
 Delta R.T.: -0.005 min
 Response: 11337301
 Conc: 1.63 ng/ml



#12 2,4,5-T

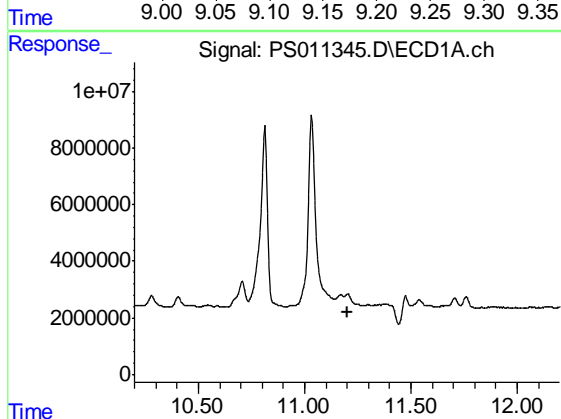
R.T.: 9.504 min
 Delta R.T.: 0.019 min
 Response: 18078022
 Conc: 3.58 ng/ml

Instrument :
 ECD_S
 ClientSampleId :
 PB130407BL



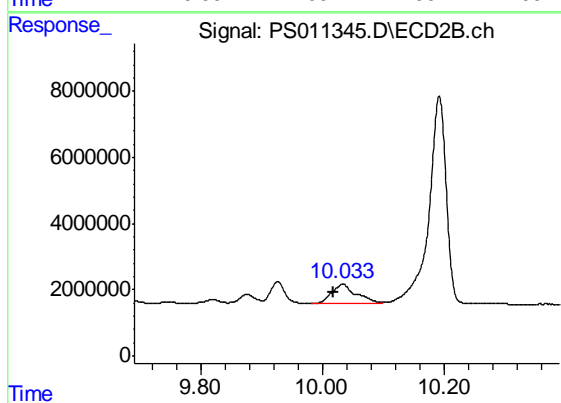
#12 2,4,5-T

R.T.: 9.179 min
 Delta R.T.: 0.002 min
 Response: 9406472
 Conc: 3.10 ng/ml



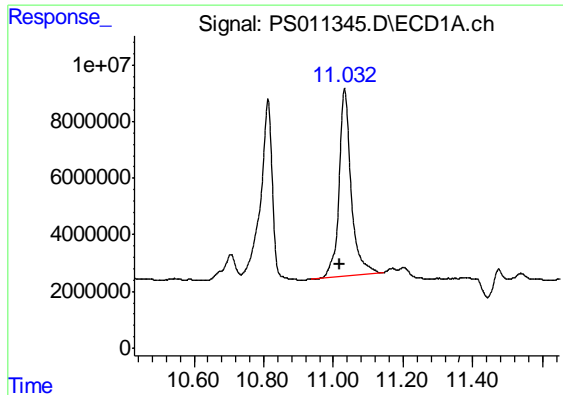
#14 DINOSEB

R.T.: 0.000 min
 Exp R.T. : 11.199 min
 Response: 0
 Conc: N.D.



#14 DINOSEB

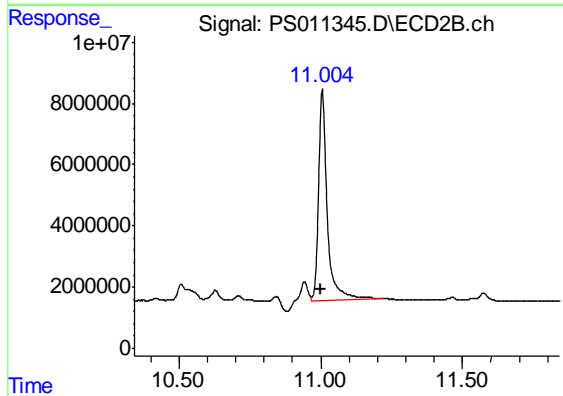
R.T.: 10.033 min
 Delta R.T.: 0.016 min
 Response: 16921787
 Conc: 7.89 ng/ml



#15 Picloram

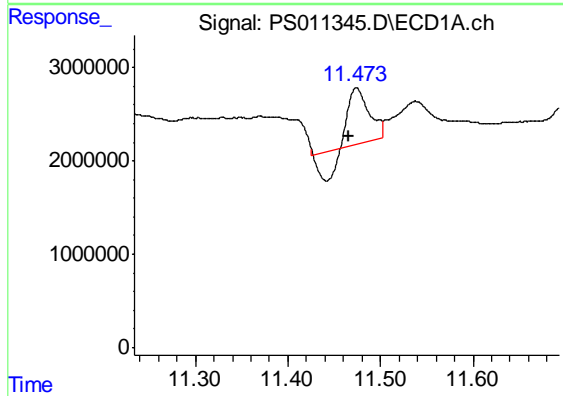
R.T.: 11.032 min
 Delta R.T.: 0.014 min
 Response: 158882385
 Conc: 25.18 ng/ml

Instrument :
 ECD_S
 ClientSampleId :
 PB130407BL



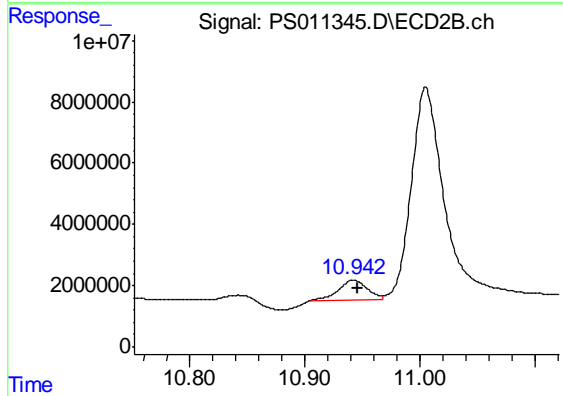
#15 Picloram

R.T.: 11.005 min
 Delta R.T.: 0.005 min
 Response: 147656540
 Conc: 33.76 ng/ml



#16 DCPA

R.T.: 11.474 min
 Delta R.T.: 0.009 min
 Response: 6653628
 Conc: 1.03 ng/ml



#16 DCPA

R.T.: 10.942 min
 Delta R.T.: -0.004 min
 Response: 11185972
 Conc: 2.96 ng/ml