

Data Path : Z:\pestpcbsrv\HPCHEM1\ECD_S\Data\PS072320\
 Data File : PS011358.D
 Signal(s) : Signal #1: ECD1A.ch Signal #2: ECD2B.ch
 Acq On : 23 Jul 2020 21:35
 Operator : DD\AJ
 Sample : L3374-01MSD
 Misc :
 ALS Vial : 15 Sample Multiplier: 1

Instrument :
 ECD_S
ClientSampleId :
 FK-BPM-01-C2-C3-C2A-C3AMSD

Manual Integrations
APPROVED

Ankita
 7/24/2020 2:13:05 PM

Integration File signal 1: autoint1.e
 Integration File signal 2: autoint2.e
 Quant Time: Jul 24 03:46:22 2020
 Quant Method : Z:\pestpcbsrv\HPCHEM1\ECD_S\Method\PS071320.M
 Quant Title : 8080.M
 QLast Update : Mon Jul 13 16:10:29 2020
 Response via : Initial Calibration
 Integrator: ChemStation

Volume Inj. : 2 µl
 Signal #1 Phase : Rtx-CLPesticides Signal #2 Phase: Rtx-CLPesticides2
 Signal #1 Info : 30M x 0.32mm x0.5 Signal #2 Info : 30M x 0.32mm x 0.25µm

	Compound	RT#1	RT#2	Resp#1	Resp#2	ng/ml	ng/ml

System Monitoring Compounds							
4) S	2,4-DCAA	7.224	6.917	460.8E6	288.5E6	474.918	512.399
Target Compounds							
1) T	Dalapon	3.040	2.628	322.8E6	241.7E6	268.245	314.792m
2) T	3,5-DICHL...	6.437	6.067	523.5E6	338.8E6	391.222	403.353m
3) T	4-Nitroph...	7.054	6.523	159.8E6	115.5E6	362.478m	352.273
5) T	DICAMBA	7.415	7.085	1496.7E6	885.6E6	386.160	386.738
6) T	MCP P	7.581	7.180	142.1E6	83348030	46.930m	43.681
7) T	MCPA	7.731	7.393	175.5E6	121.8E6	41.161	42.270m
8) T	DICHLORPROP	8.107	7.711	392.3E6	273.9E6	418.409	455.038m
9) T	2,4-D	8.336	8.003	399.0E6	344.8E6	419.538	459.981m
10) T	Pentachlo...	8.648	8.435	5410.3E6	3156.8E6	409.293	452.932
11) T	2,4,5-TP ...	9.196	8.795	2109.3E6	1359.1E6	398.292	444.553m
12) T	2,4,5-T	9.481	9.174	2010.3E6	1298.0E6	398.397	427.942
13) T	2,4-DB	10.035	9.680	242.2E6	192.3E6	375.823	449.812
14) T	DINOSEB	11.195	10.014	837.2E6	531.5E6	217.191	247.806m
15) T	Picloram	11.014	10.995	2495.5E6	1703.1E6	395.494	389.437
16) T	DCPA	11.460	10.942	2367.2E6	1676.5E6	367.417m	443.305m

(f)=RT Delta > 1/2 Window (#)=Amounts differ by > 25% (m)=manual int.

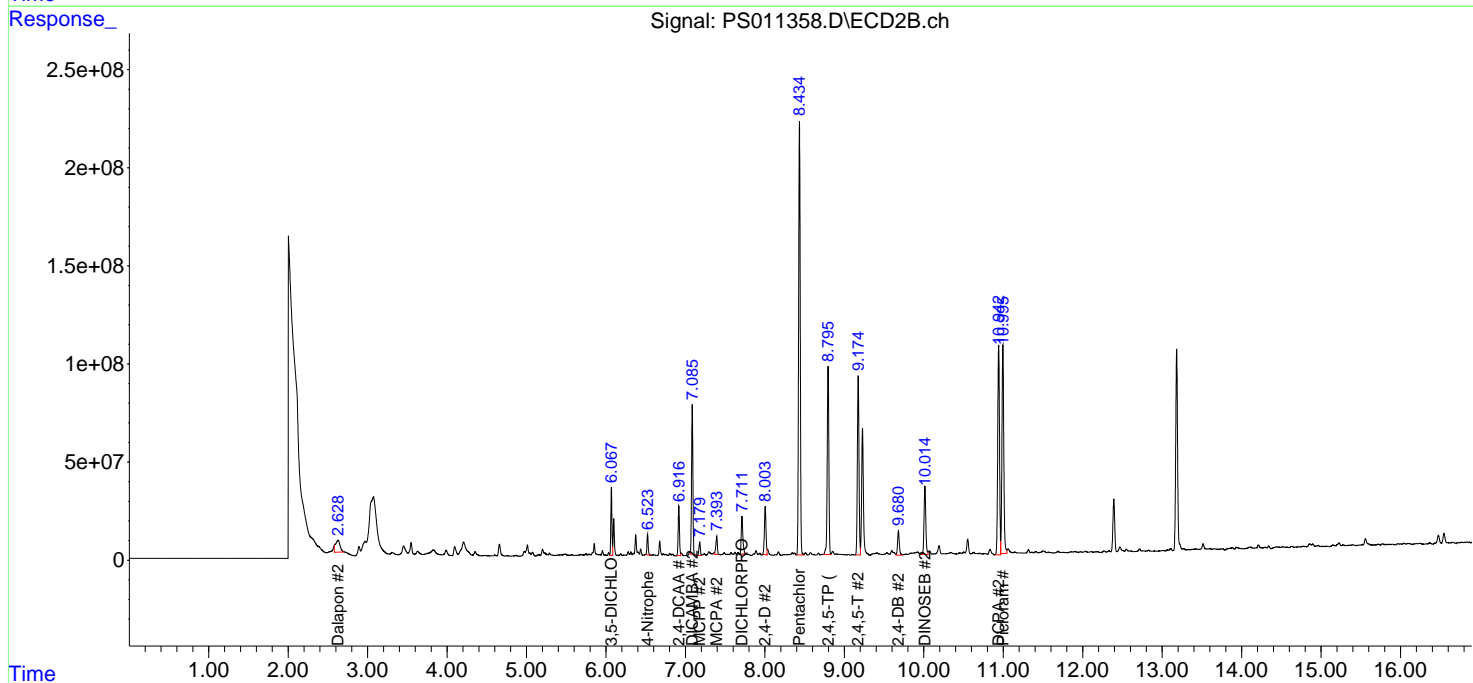
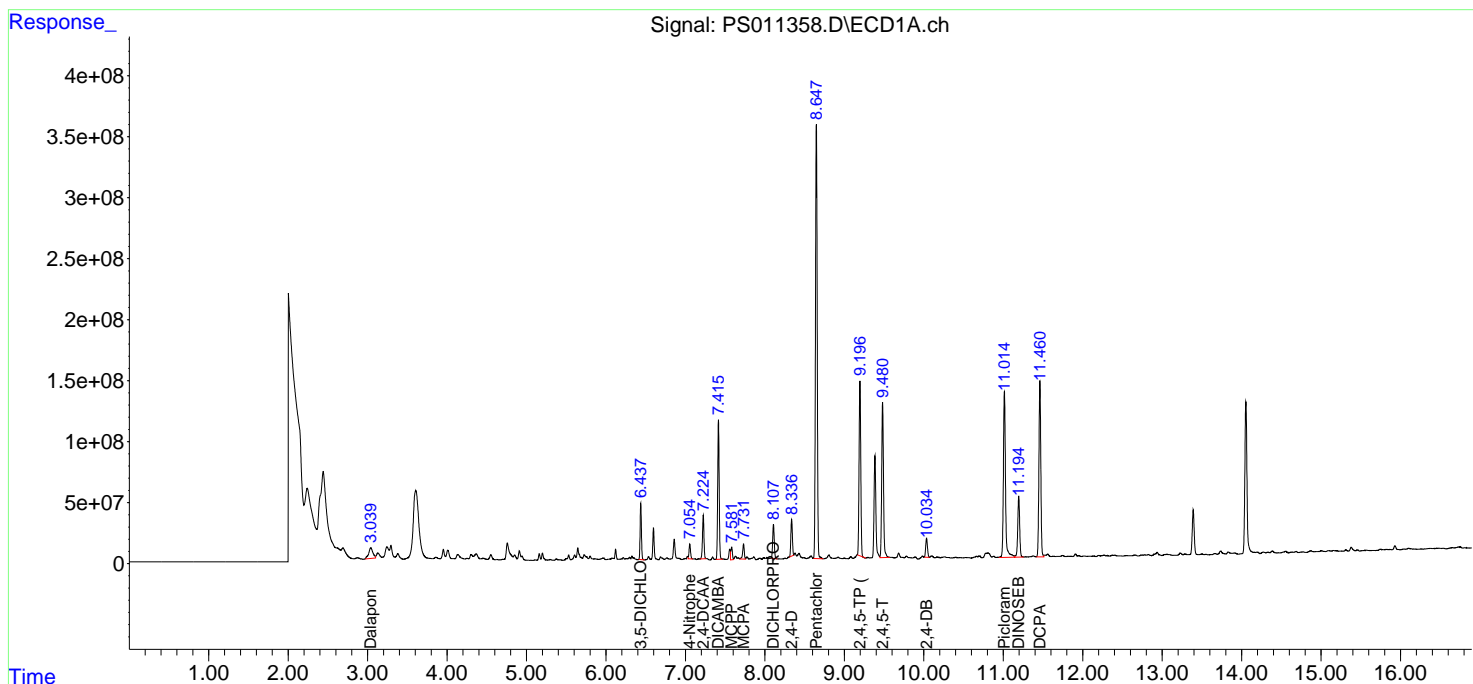
Data Path : Z:\pestpcbsrv\HPCHEM1\ECD_S\Data\PS072320\
 Data File : PS011358.D
 Signal(s) : Signal #1: ECD1A.ch Signal #2: ECD2B.ch
 Acq On : 23 Jul 2020 21:35
 Operator : DD\AJ
 Sample : L3374-01MSD
 Misc :
 ALS Vial : 15 Sample Multiplier: 1

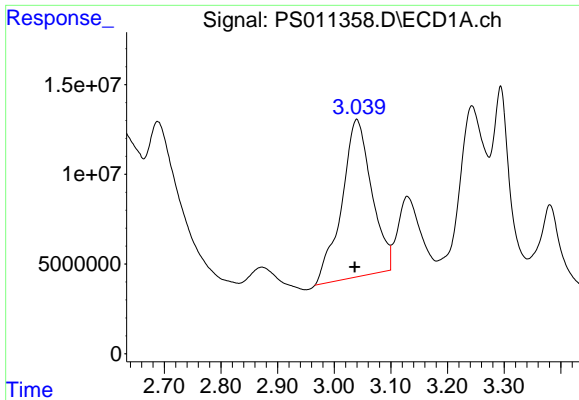
Instrument :
 ECD_S
Client Sampled :
 FK-BPM-01-C2-C3-C2A-C3AMSD

Manual Integrations
APPROVED
 Ankita
 7/24/2020 2:13:05 PM

Integration File signal 1: autoint1.e
 Integration File signal 2: autoint2.e
 Quant Time: Jul 24 03:46:22 2020
 Quant Method : Z:\pestpcbsrv\HPCHEM1\ECD_S\Method\PS071320.M
 Quant Title : 8080.M
 QLast Update : Mon Jul 13 16:10:29 2020
 Response via : Initial Calibration
 Integrator: ChemStation

Volume Inj. : 2 µl
 Signal #1 Phase : Rtx-CLPesticides Signal #2 Phase: Rtx-CLPesticides2
 Signal #1 Info : 30M x 0.32mm x0.5 Signal #2 Info : 30M x 0.32mm x 0.25µm

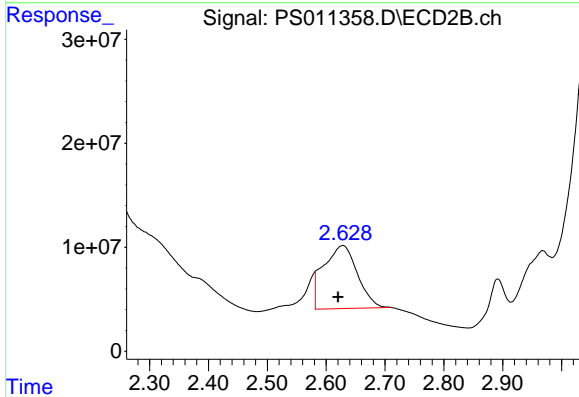




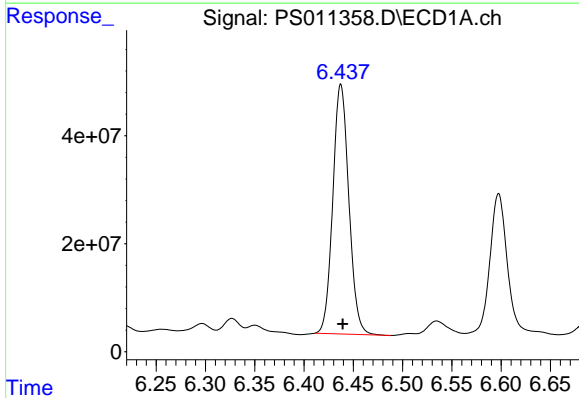
#1 Dalapon
 R.T.: 3.040 min
 Delta R.T.: 0.004 min
 Response: 322797279
 Conc: 268.24 ng/ml

Instrument :
 ECD_S
ClientSampleId :
 FK-BPM-01-C2-C3-C2A-C3AMSD

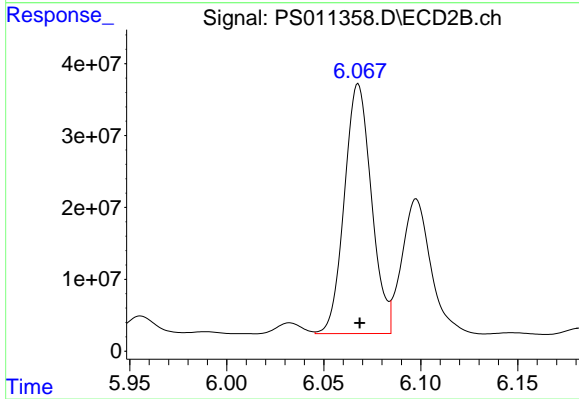
Manual Integrations
APPROVED
 Ankita
 7/24/2020 2:13:05 PM



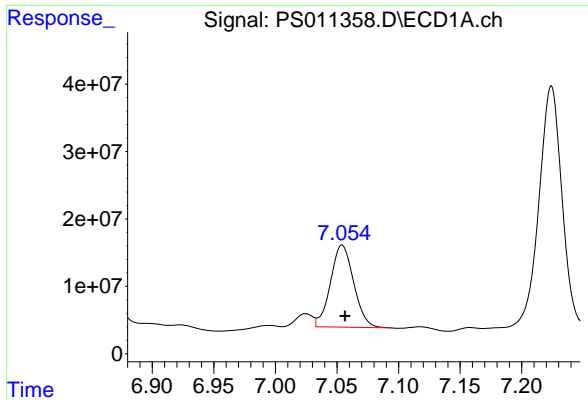
#1 Dalapon
 R.T.: 2.628 min
 Delta R.T.: 0.008 min
 Response: 241656872
 Conc: 314.79 ng/ml m



#2 3,5-DICHLOROBENZOIC ACID
 R.T.: 6.437 min
 Delta R.T.: -0.002 min
 Response: 523517165
 Conc: 391.22 ng/ml



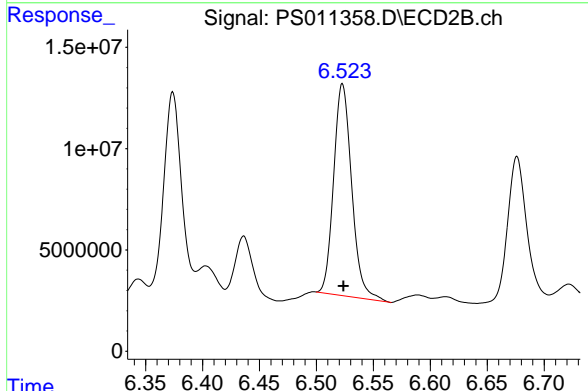
#2 3,5-DICHLOROBENZOIC ACID
 R.T.: 6.067 min
 Delta R.T.: -0.001 min
 Response: 338753050
 Conc: 403.35 ng/ml m



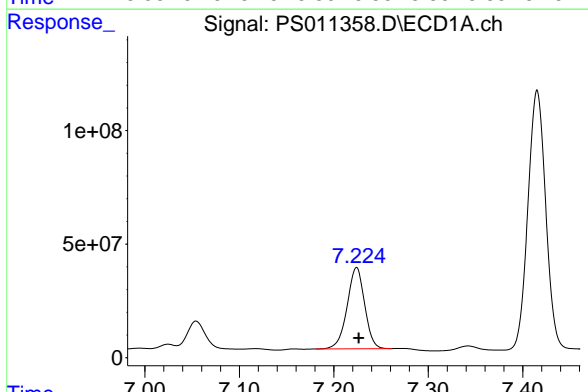
#3 4-Nitrophenol
 R.T.: 7.054 min
 Delta R.T.: -0.003 min
 Response: 159796224
 Conc: 362.48 ng/ml m

Instrument :
 ECD_S
ClientSampleId :
 FK-BPM-01-C2-C3-C2A-C3AMSD

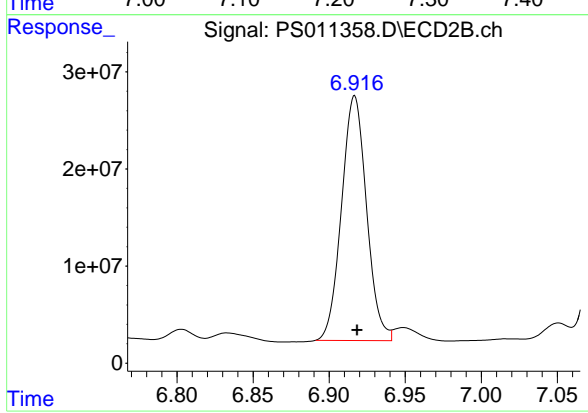
Manual Integrations
APPROVED
 Ankita
 7/24/2020 2:13:05 PM



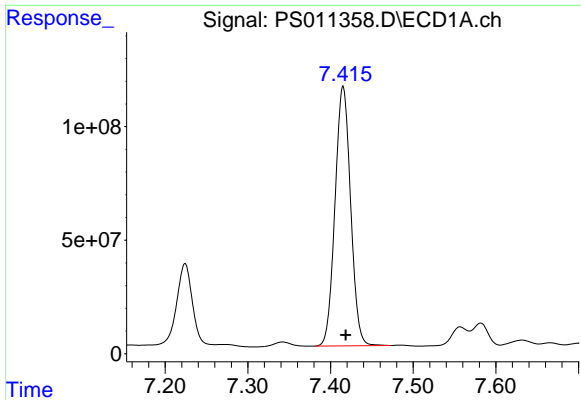
#3 4-Nitrophenol
 R.T.: 6.523 min
 Delta R.T.: 0.000 min
 Response: 115502634
 Conc: 352.27 ng/ml



#4 2,4-DCAA
 R.T.: 7.224 min
 Delta R.T.: -0.002 min
 Response: 460831068
 Conc: 474.92 ng/ml



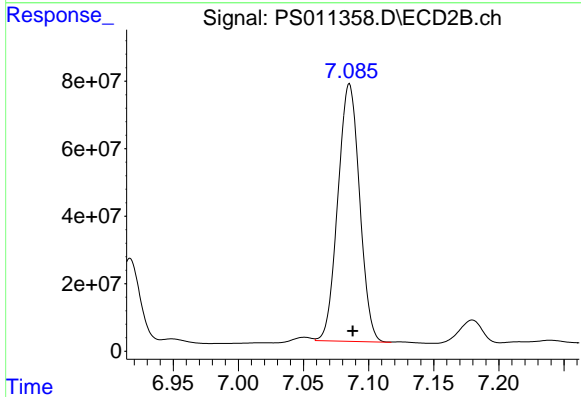
#4 2,4-DCAA
 R.T.: 6.917 min
 Delta R.T.: -0.002 min
 Response: 288492394
 Conc: 512.40 ng/ml



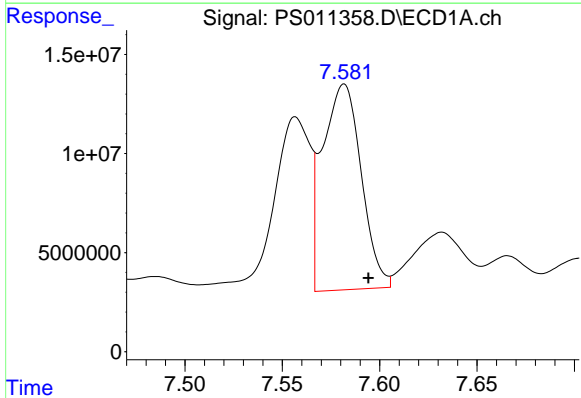
#5 DICAMBA
 R.T.: 7.415 min
 Delta R.T.: -0.003 min
 Response: 1496702353
 Conc: 386.16 ng/ml

Instrument :
 ECD_S
 ClientSampleId :
 FK-BPM-01-C2-C3-C2A-C3AMSD

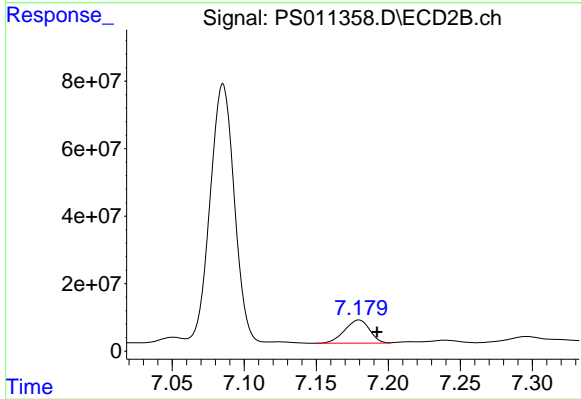
Manual Integrations
 APPROVED
 Ankita
 7/24/2020 2:13:05 PM



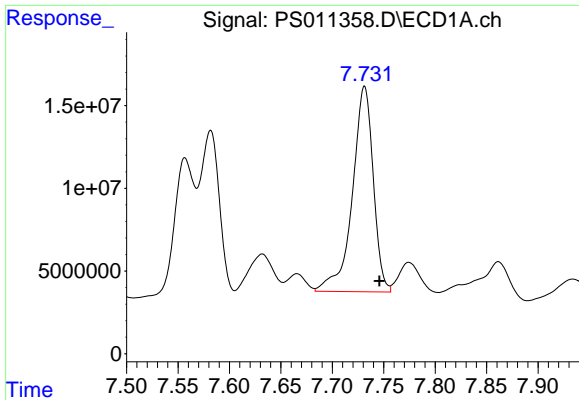
#5 DICAMBA
 R.T.: 7.085 min
 Delta R.T.: -0.003 min
 Response: 885616202
 Conc: 386.74 ng/ml



#6 MCPP
 R.T.: 7.581 min
 Delta R.T.: -0.013 min
 Response: 142113282
 Conc: 46.93 ug/ml m



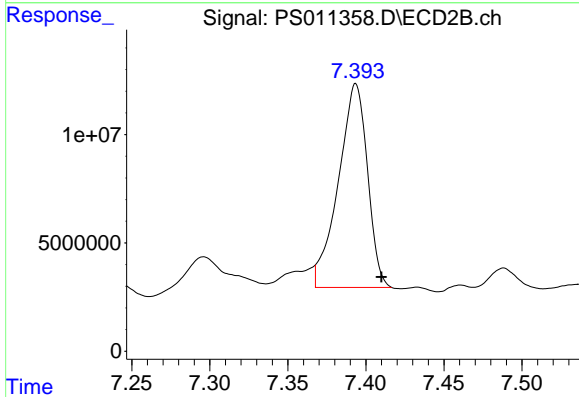
#6 MCPP
 R.T.: 7.180 min
 Delta R.T.: -0.013 min
 Response: 83348030
 Conc: 43.68 ug/ml



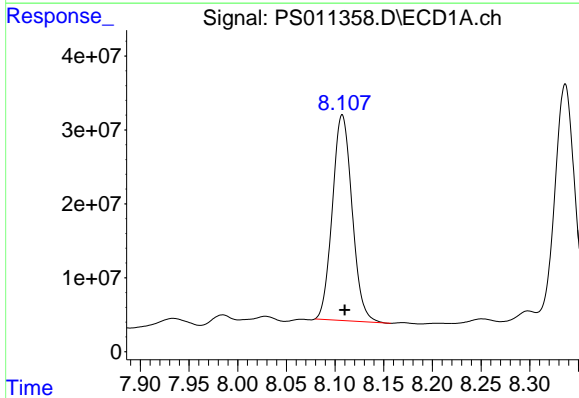
#7 MCPA
R.T.: 7.731 min
Delta R.T.: -0.015 min
Response: 175541006
Conc: 41.16 ug/ml

Instrument :
ECD_S
ClientSampleId :
FK-BPM-01-C2-C3-C2A-C3AMSD

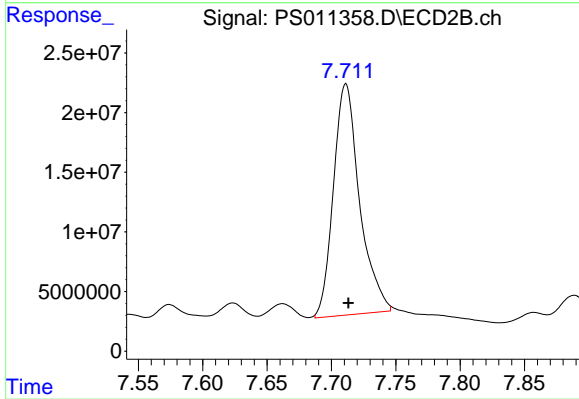
Manual Integrations
APPROVED
Ankita
7/24/2020 2:13:05 PM



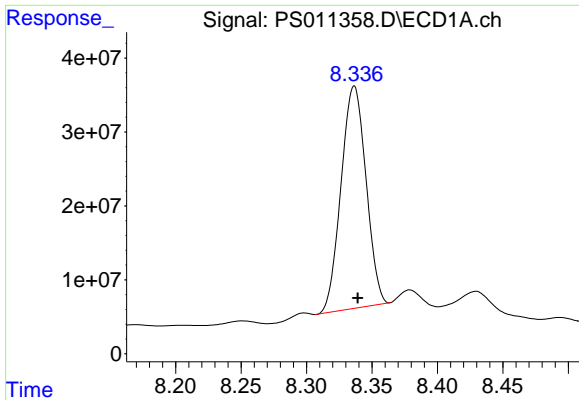
#7 MCPA
R.T.: 7.393 min
Delta R.T.: -0.017 min
Response: 121836553
Conc: 42.27 ug/ml m



#8 DICHLORPROP
R.T.: 8.107 min
Delta R.T.: -0.003 min
Response: 392269178
Conc: 418.41 ng/ml



#8 DICHLORPROP
R.T.: 7.711 min
Delta R.T.: -0.002 min
Response: 273900673
Conc: 455.04 ng/ml m



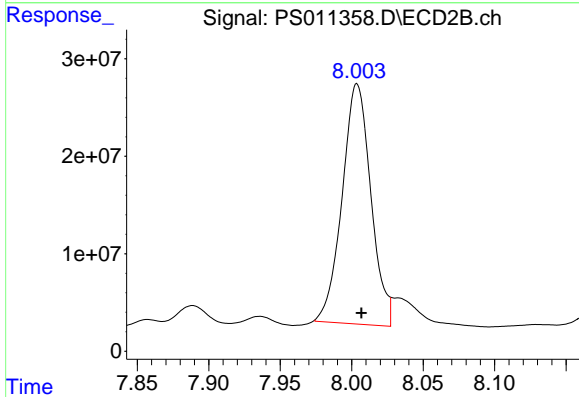
#9 2,4-D

R.T.: 8.336 min
 Delta R.T.: -0.003 min
 Response: 399017846
 Conc: 419.54 ng/ml

Instrument :
 ECD_S
 ClientSampleId :
 FK-BPM-01-C2-C3-C2A-C3AMSD

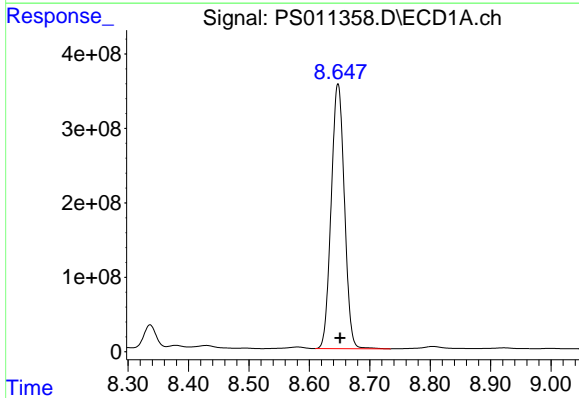
Manual Integrations
 APPROVED

Ankita
 7/24/2020 2:13:05 PM



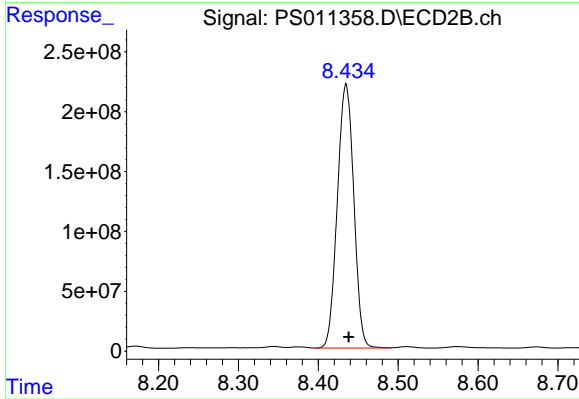
#9 2,4-D

R.T.: 8.003 min
 Delta R.T.: -0.004 min
 Response: 344831115
 Conc: 459.98 ng/ml m



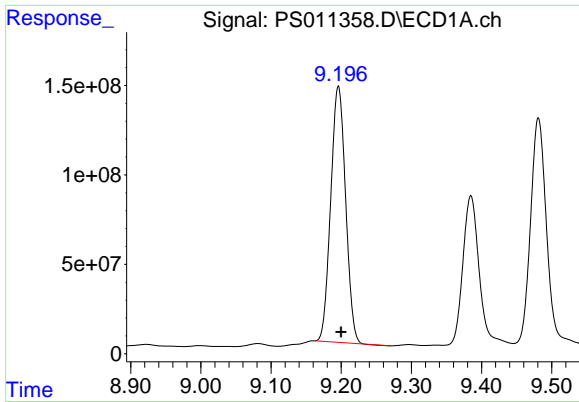
#10 Pentachlorophenol

R.T.: 8.648 min
 Delta R.T.: -0.004 min
 Response: 5410329442
 Conc: 409.29 ng/ml



#10 Pentachlorophenol

R.T.: 8.435 min
 Delta R.T.: -0.004 min
 Response: 3156786836
 Conc: 452.93 ng/ml



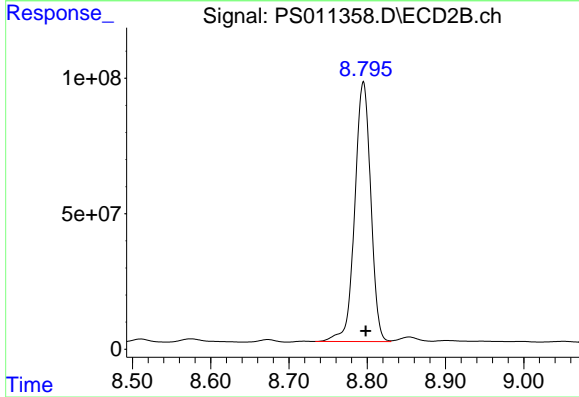
#11 2,4,5-TP (SILVEX)

R.T.: 9.196 min
 Delta R.T.: -0.004 min
 Response: 2109258629
 Conc: 398.29 ng/ml

Instrument :
 ECD_S
 ClientSampleId :
 FK-BPM-01-C2-C3-C2A-C3AMSD

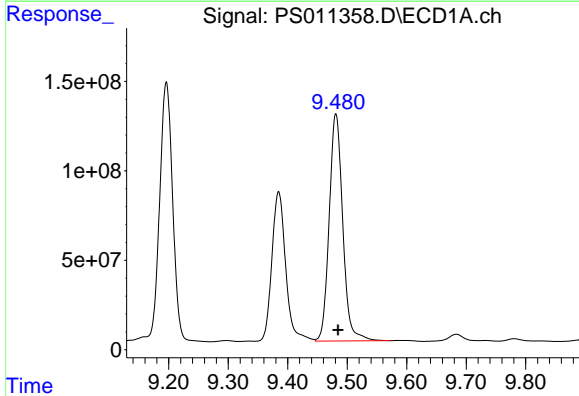
Manual Integrations
 APPROVED

Ankita
 7/24/2020 2:13:05 PM



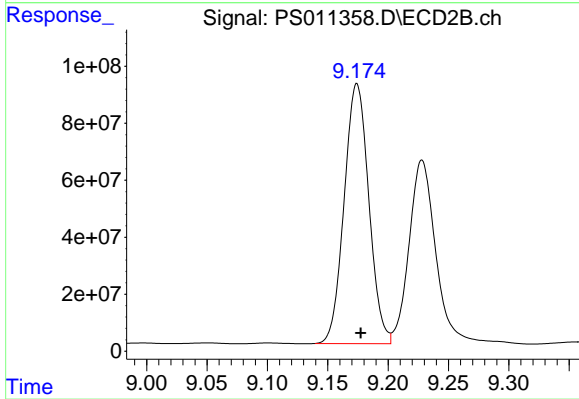
#11 2,4,5-TP (SILVEX)

R.T.: 8.795 min
 Delta R.T.: -0.003 min
 Response: 1359116709
 Conc: 444.55 ng/ml m



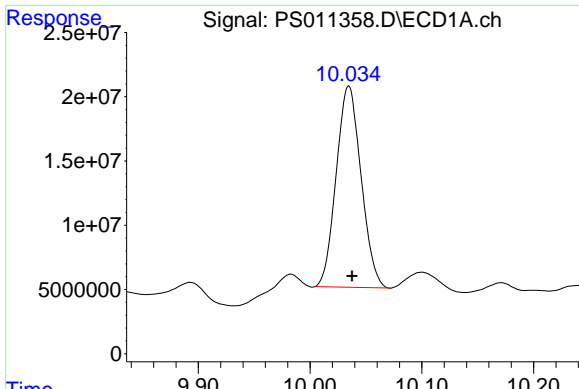
#12 2,4,5-T

R.T.: 9.481 min
 Delta R.T.: -0.003 min
 Response: 2010262396
 Conc: 398.40 ng/ml



#12 2,4,5-T

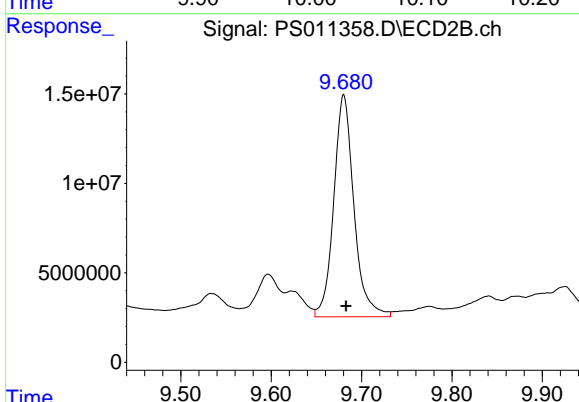
R.T.: 9.174 min
 Delta R.T.: -0.003 min
 Response: 1297956788
 Conc: 427.94 ng/ml



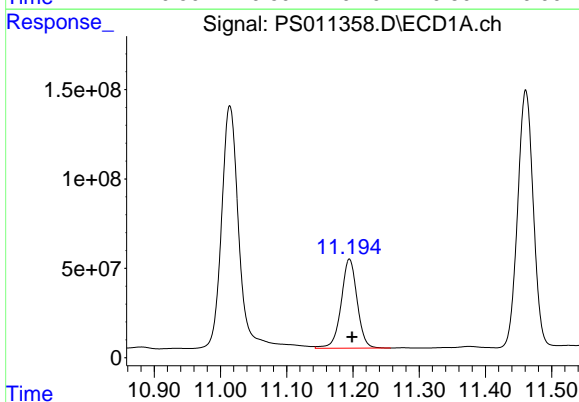
#13 2,4-DB
 R.T.: 10.035 min
 Delta R.T.: -0.003 min
 Response: 242229428
 Conc: 375.82 ng/ml

Instrument :
 ECD_S
ClientSampled :
 FK-BPM-01-C2-C3-C2A-C3AMSD

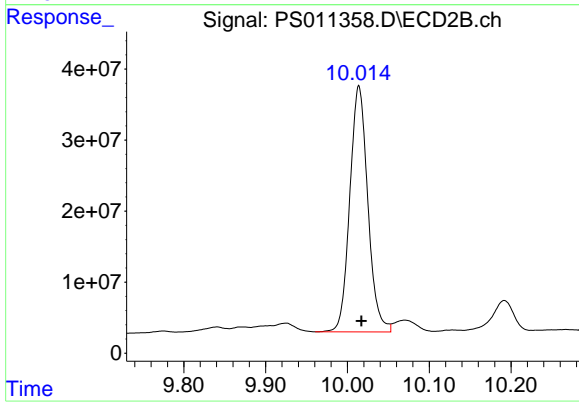
Manual Integrations
APPROVED
 Ankita
 7/24/2020 2:13:05 PM



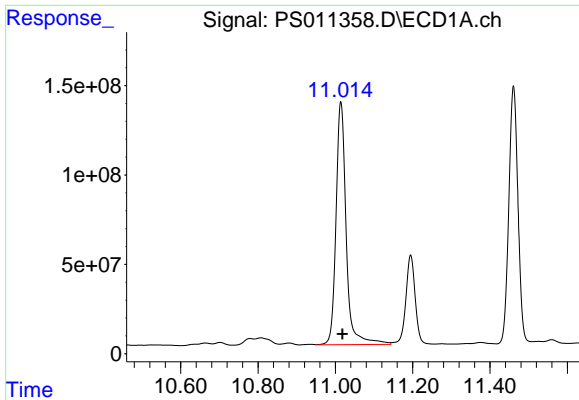
#13 2,4-DB
 R.T.: 9.680 min
 Delta R.T.: -0.003 min
 Response: 192293645
 Conc: 449.81 ng/ml



#14 DINOSEB
 R.T.: 11.195 min
 Delta R.T.: -0.004 min
 Response: 837199005
 Conc: 217.19 ng/ml



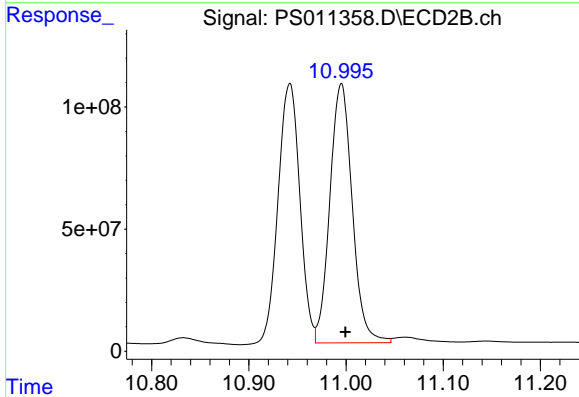
#14 DINOSEB
 R.T.: 10.014 min
 Delta R.T.: -0.004 min
 Response: 531524704
 Conc: 247.81 ng/ml m



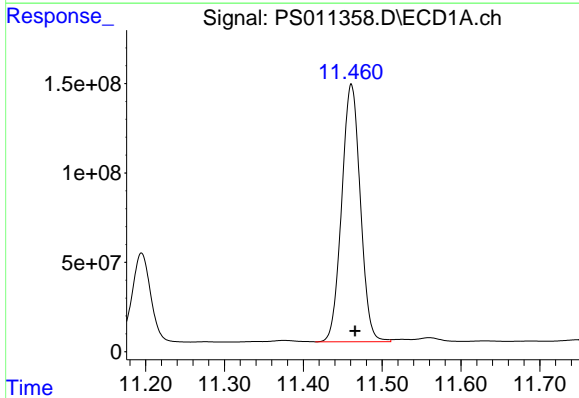
#15 Picloram
 R.T.: 11.014 min
 Delta R.T.: -0.004 min
 Response: 2495518611
 Conc: 395.49 ng/ml

Instrument :
 ECD_S
ClientSampleId :
 FK-BPM-01-C2-C3-C2A-C3AMSD

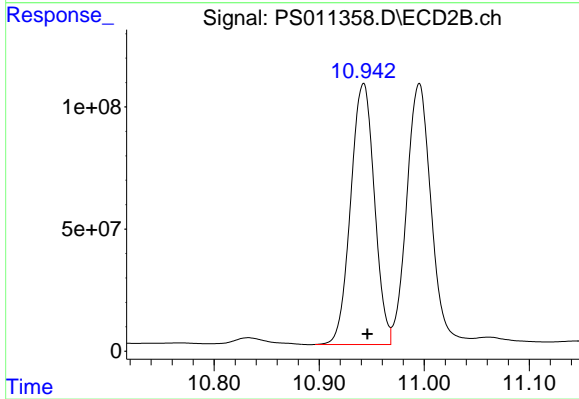
Manual Integrations
APPROVED
 Ankita
 7/24/2020 2:13:05 PM



#15 Picloram
 R.T.: 10.995 min
 Delta R.T.: -0.004 min
 Response: 1703148879
 Conc: 389.44 ng/ml



#16 DCPA
 R.T.: 11.460 min
 Delta R.T.: -0.005 min
 Response: 2367242748
 Conc: 367.42 ng/ml m



#16 DCPA
 R.T.: 10.942 min
 Delta R.T.: -0.004 min
 Response: 1676546371
 Conc: 443.31 ng/ml m