

Data Path : Z:\pestpcbsrv\HPCHEM1\ECD_S\Data\PS072618\
 Data File : PS001262.D
 Signal(s) : Signal #1: ECD1A.ch Signal #2: ECD2B.ch
 Acq On : 26 Jul 2018 19:01
 Operator : UA
 Sample : J4140-07
 Misc :
 ALS Vial : 16 Sample Multiplier: 1

Instrument :
 ECD_S
 ClientSampleId :

Integration File signal 1: autoint1.e
 Integration File signal 2: autoint2.e
 Quant Time: Jul 27 00:48:24 2018
 Quant Method : Z:\pestpcbsrv\HPCHEM1\ECD_S\Method\PS072118.M
 Quant Title : 8080.M
 QLast Update : Sat Jul 21 01:18:58 2018
 Response via : Initial Calibration
 Integrator: ChemStation

Volume Inj. : 2 µl
 Signal #1 Phase : Rtx-CLPesticides Signal #2 Phase: Rtx-CLPesticides2
 Signal #1 Info : 30M x 0.32mm x0.5 Signal #2 Info : 30M x 0.32mm x 0.25µm

	Compound	RT#1	RT#2	Resp#1	Resp#2	ng/ml	ng/ml

System Monitoring Compounds							
4) S	2,4-DCAA	11.643	11.063	57936846	48474056	312.244	266.524
Target Compounds							
1) T	Dalapon	2.988	2.425	7380723	8508372	31.126	37.338
2) T	3,5-DICHL...	0.000	9.150	0	5764802	N.D.	22.629 #
3) T	4-Nitroph...	11.236	10.219	3538864	33676177	30.749	330.356 #
5) T	DICAMBA	0.000	11.306	0	12338066	N.D.	18.002 #
6) T	MCPD	12.337	0.000	10003978	0	19.904	N.D. #
7) T	MCPA	12.476	11.924	16970751	1814766	21.519	2.791 #
8) T	DICHLORPROP	13.140	0.000	3031928	0	16.610	N.D. #
9) T	2,4-D	0.000	12.906	0	4579462	N.D.	19.299 #
10) T	Pentachlo...	13.900	13.502	5941485	3625271	2.110	1.317 #
14) T	DINOSEB	0.000	15.758	0	11691928	N.D.	16.449 #
15) T	Picloram	0.000	16.938	0	28461395	N.D.	20.646 #
16) T	DCPA	17.791	17.010	22765138	52605190	16.862	36.423 #

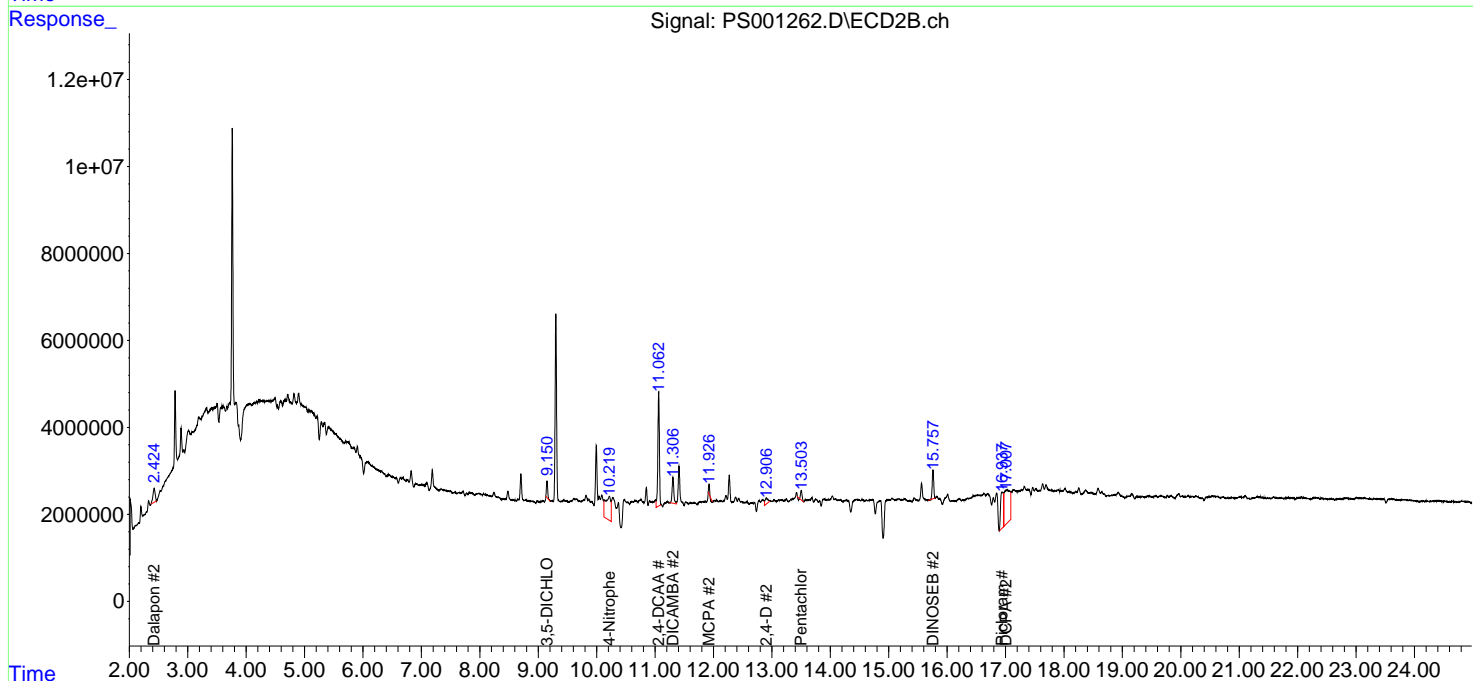
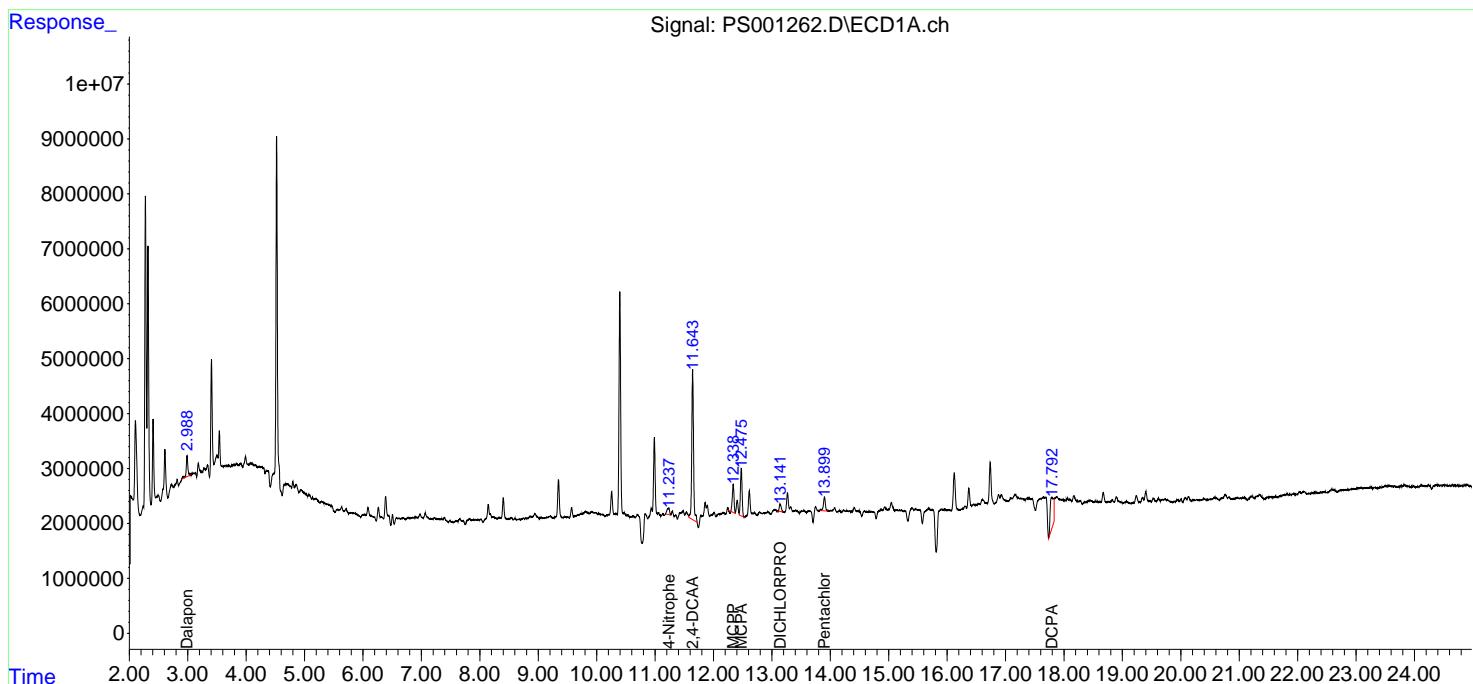
(f)=RT Delta > 1/2 Window (#)=Amounts differ by > 25% (m)=manual int.

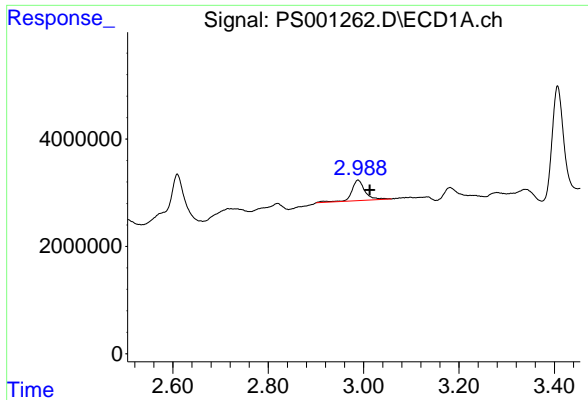
Data Path : Z:\pestpcbsrv\HPCHEM1\ECD_S\Data\PS072618\
 Data File : PS001262.D
 Signal(s) : Signal #1: ECD1A.ch Signal #2: ECD2B.ch
 Acq On : 26 Jul 2018 19:01
 Operator : UA
 Sample : J4140-07
 Misc :
 ALS Vial : 16 Sample Multiplier: 1

Instrument :
 ECD_S
 ClientSampleId :

Integration File signal 1: autoint1.e
 Integration File signal 2: autoint2.e
 Quant Time: Jul 27 00:48:24 2018
 Quant Method : Z:\pestpcbsrv\HPCHEM1\ECD_S\Method\PS072118.M
 Quant Title : 8080.M
 QLast Update : Sat Jul 21 01:18:58 2018
 Response via : Initial Calibration
 Integrator: ChemStation

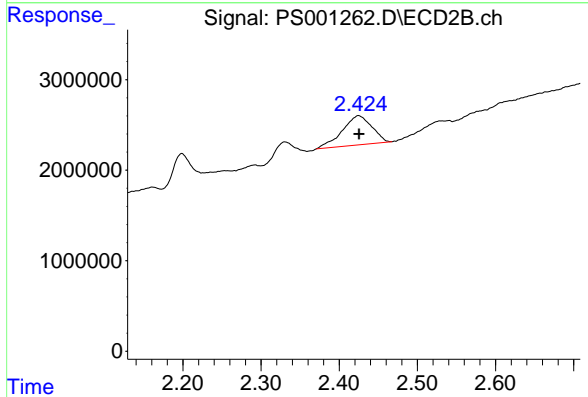
Volume Inj. : 2 µl
 Signal #1 Phase : Rtx-CLPesticides Signal #2 Phase: Rtx-CLPesticides2
 Signal #1 Info : 30M x 0.32mm x0.5 Signal #2 Info : 30M x 0.32mm x 0.25µm



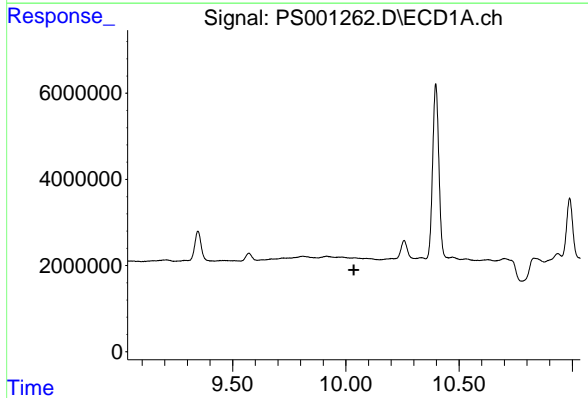


#1 Dalapon
 R.T.: 2.988 min
 Delta R.T.: -0.025 min
 Response: 7380723
 Conc: 31.13 ng/ml

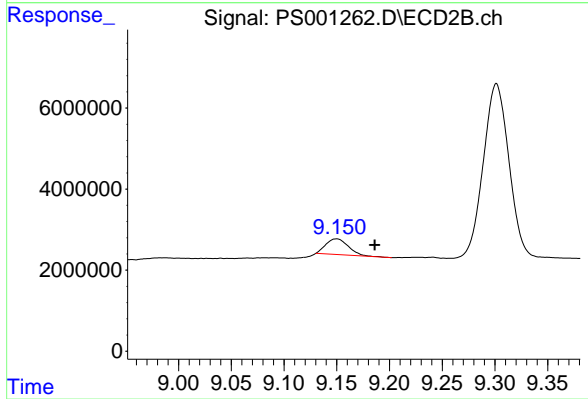
Instrument :
 ECD_S
 ClientSampleId :



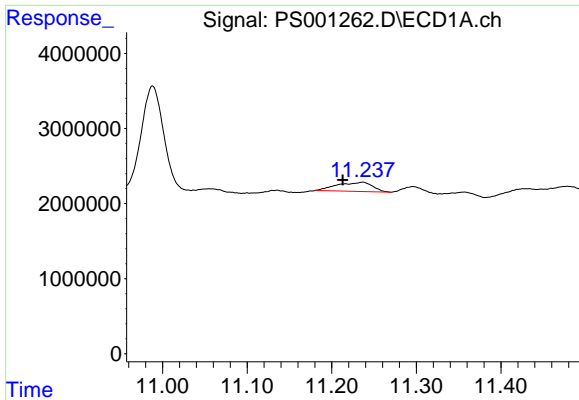
#1 Dalapon
 R.T.: 2.425 min
 Delta R.T.: 0.000 min
 Response: 8508372
 Conc: 37.34 ng/ml



#2 3,5-DICHLOROBENZOIC ACID
 R.T.: 0.000 min
 Exp R.T. : 10.035 min
 Response: 0
 Conc: N.D.

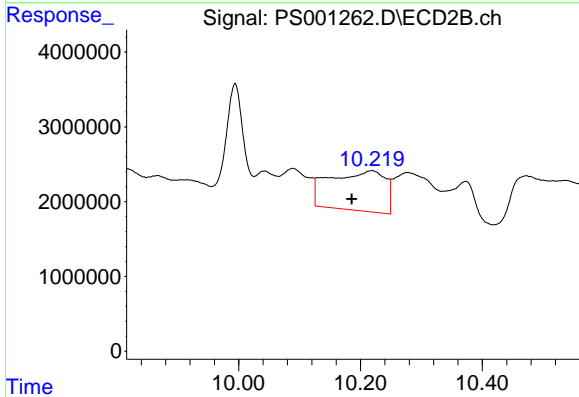


#2 3,5-DICHLOROBENZOIC ACID
 R.T.: 9.150 min
 Delta R.T.: -0.036 min
 Response: 5764802
 Conc: 22.63 ng/ml

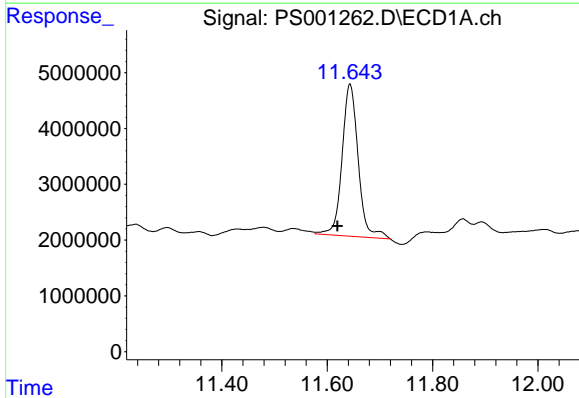


#3 4-Nitrophenol
R.T.: 11.236 min
Delta R.T.: 0.023 min
Response: 3538864
Conc: 30.75 ng/ml

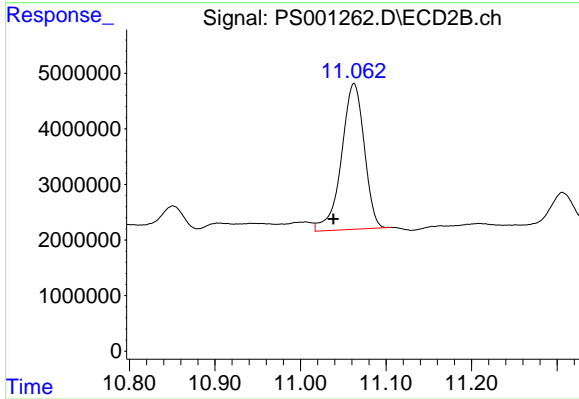
Instrument :
ECD_S
ClientSampled :



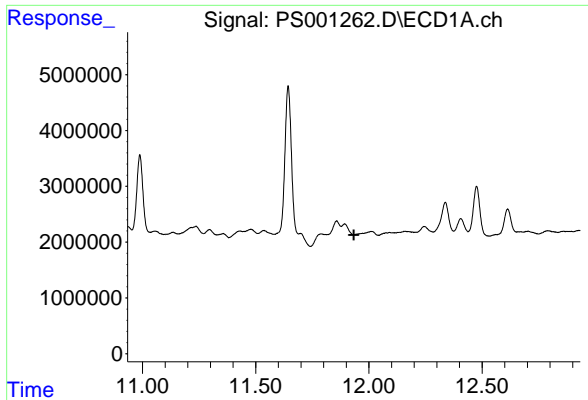
#3 4-Nitrophenol
R.T.: 10.219 min
Delta R.T.: 0.034 min
Response: 33676177
Conc: 330.36 ng/ml



#4 2,4-DCAA
R.T.: 11.643 min
Delta R.T.: 0.024 min
Response: 57936846
Conc: 312.24 ng/ml



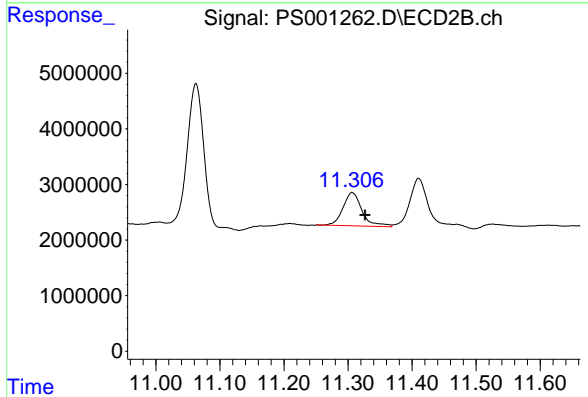
#4 2,4-DCAA
R.T.: 11.063 min
Delta R.T.: 0.024 min
Response: 48474056
Conc: 266.52 ng/ml



#5 DICAMBA

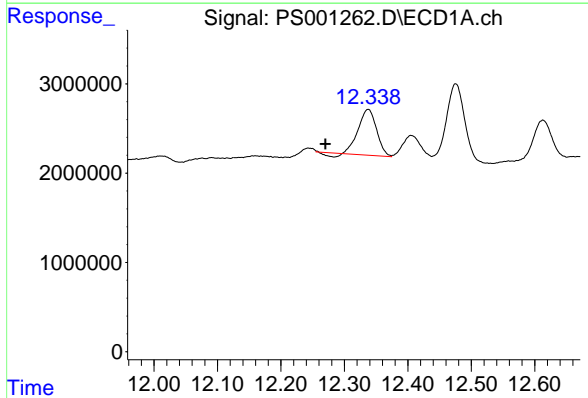
R.T.: 0.000 min
 Exp R.T.: 11.934 min
 Response: 0
 Conc: N.D.

Instrument :
 ECD_S
 ClientSampleId :



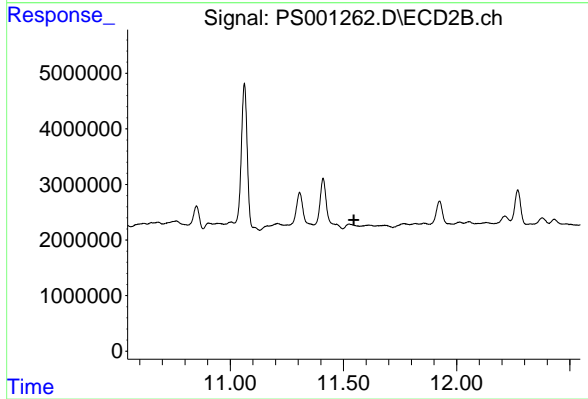
#5 DICAMBA

R.T.: 11.306 min
 Delta R.T.: -0.020 min
 Response: 12338066
 Conc: 18.00 ng/ml



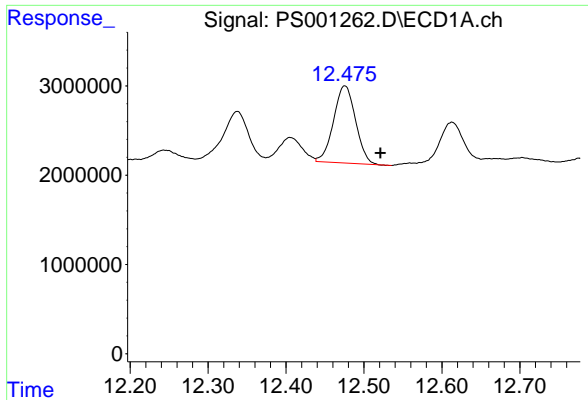
#6 MCP

R.T.: 12.337 min
 Delta R.T.: 0.067 min
 Response: 10003978
 Conc: 19.90 ug/ml



#6 MCP

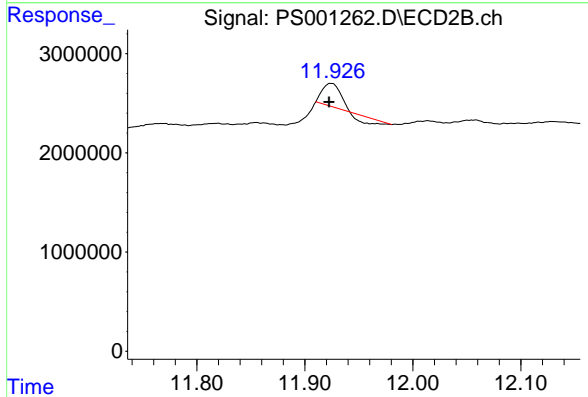
R.T.: 0.000 min
 Exp R.T.: 11.546 min
 Response: 0
 Conc: N.D.



#7 MCPA

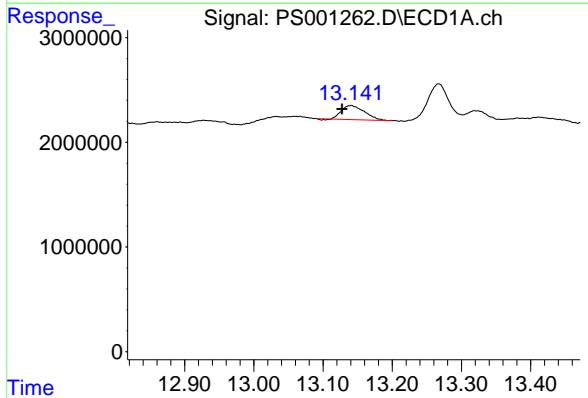
R.T.: 12.476 min
 Delta R.T.: -0.046 min
 Response: 16970751
 Conc: 21.52 ug/ml

Instrument :
 ECD_S
 ClientSampled :



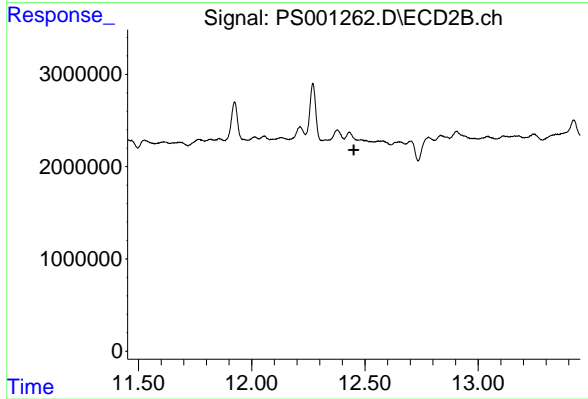
#7 MCPA

R.T.: 11.924 min
 Delta R.T.: 0.002 min
 Response: 1814766
 Conc: 2.79 ug/ml



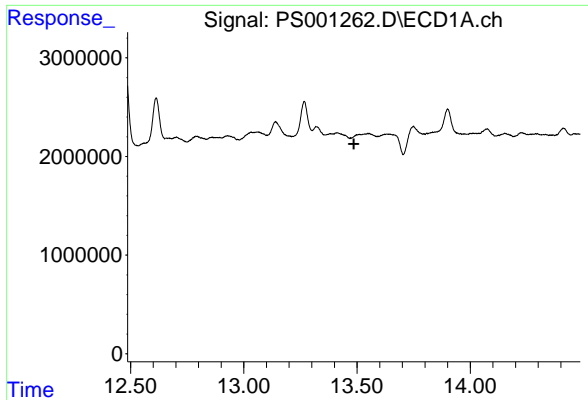
#8 DICHLORPROP

R.T.: 13.140 min
 Delta R.T.: 0.013 min
 Response: 3031928
 Conc: 16.61 ng/ml



#8 DICHLORPROP

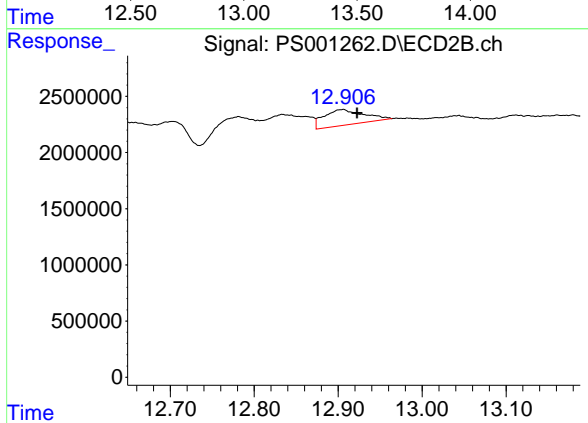
R.T.: 0.000 min
 Exp R.T. : 12.451 min
 Response: 0
 Conc: N.D.



#9 2,4-D

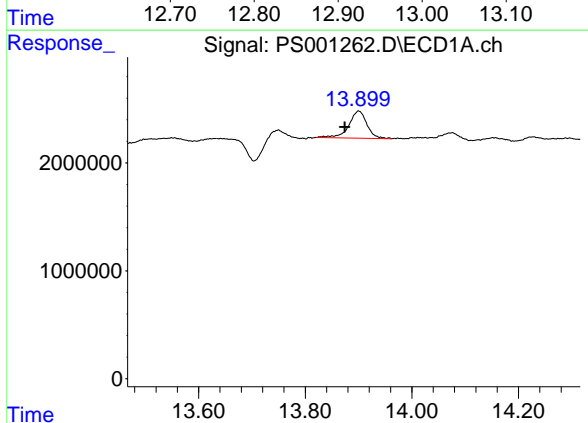
R.T.: 0.000 min
 Exp R.T.: 13.486 min
 Response: 0
 Conc: N.D.

Instrument :
 ECD_S
 ClientSampleId :



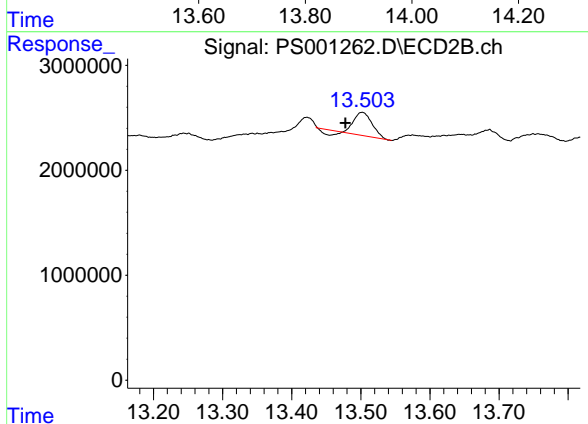
#9 2,4-D

R.T.: 12.906 min
 Delta R.T.: -0.016 min
 Response: 4579462
 Conc: 19.30 ng/ml



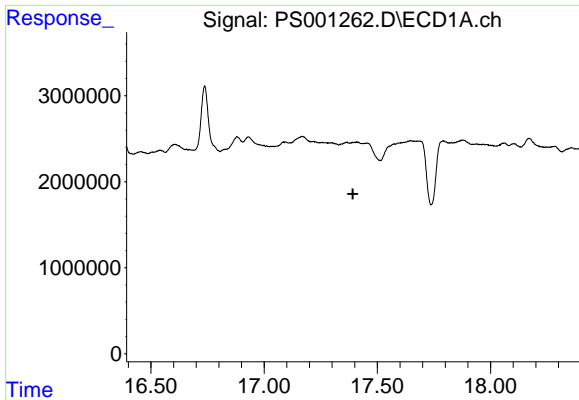
#10 Pentachlorophenol

R.T.: 13.900 min
 Delta R.T.: 0.026 min
 Response: 5941485
 Conc: 2.11 ng/ml



#10 Pentachlorophenol

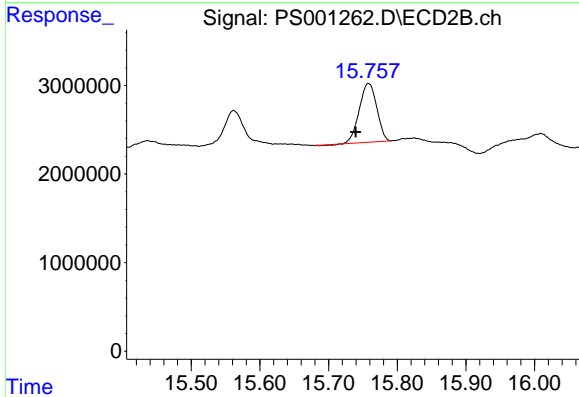
R.T.: 13.502 min
 Delta R.T.: 0.024 min
 Response: 3625271
 Conc: 1.32 ng/ml



#14 DINOSEB

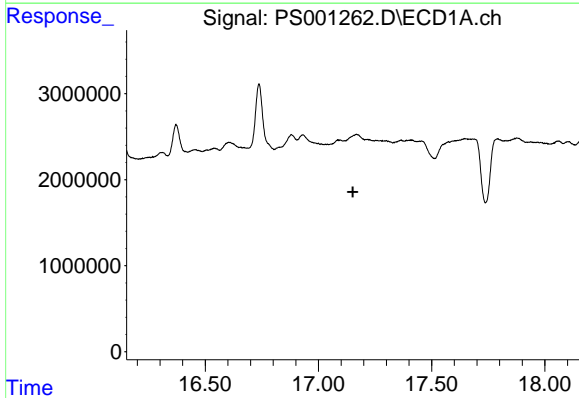
R.T.: 0.000 min
 Exp R.T. : 17.392 min
 Response: 0
 Conc: N.D.

Instrument :
 ECD_S
 ClientSampleId :



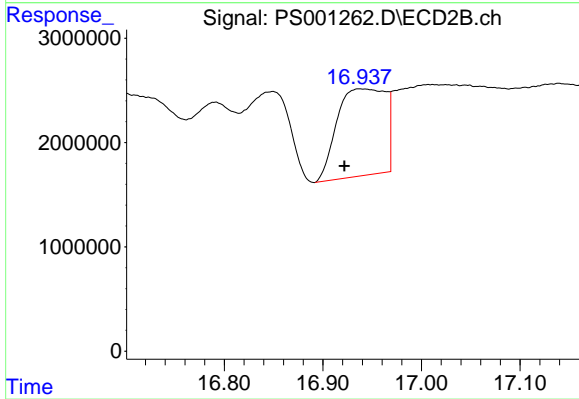
#14 DINOSEB

R.T.: 15.758 min
 Delta R.T.: 0.019 min
 Response: 11691928
 Conc: 16.45 ng/ml



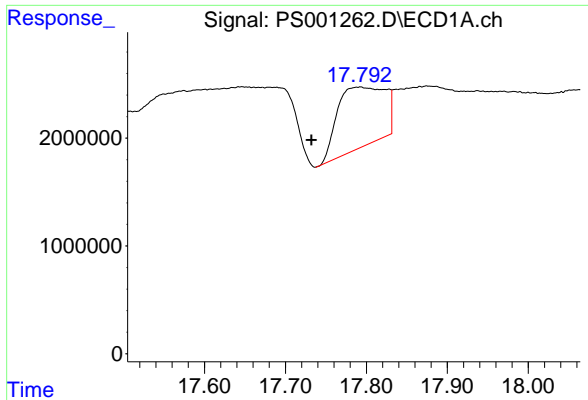
#15 Picloram

R.T.: 0.000 min
 Exp R.T. : 17.152 min
 Response: 0
 Conc: N.D.



#15 Picloram

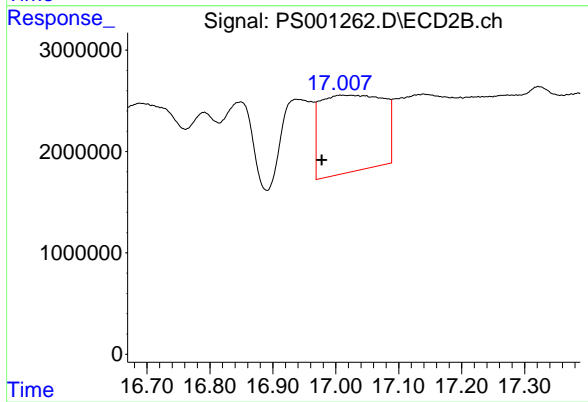
R.T.: 16.938 min
 Delta R.T.: 0.016 min
 Response: 28461395
 Conc: 20.65 ng/ml



#16 DCPA

R.T.: 17.791 min
Delta R.T.: 0.059 min
Response: 22765138
Conc: 16.86 ng/ml

Instrument :
ECD_S
ClientSampleId :



#16 DCPA

R.T.: 17.010 min
Delta R.T.: 0.032 min
Response: 52605190
Conc: 36.42 ng/ml