

Data Path : Z:\pestpcbsrv\HPCHEM1\ECD\_S\Data\PS072618\  
 Data File : PS001269.D  
 Signal(s) : Signal #1: ECD1A.ch Signal #2: ECD2B.ch  
 Acq On : 26 Jul 2018 22:38  
 Operator : UA  
 Sample : PB111484BL  
 Misc :  
 ALS Vial : 21 Sample Multiplier: 1

Instrument :  
 ECD\_S  
 ClientSampleId :

Integration File signal 1: autoint1.e  
 Integration File signal 2: autoint2.e  
 Quant Time: Jul 27 00:51:13 2018  
 Quant Method : Z:\pestpcbsrv\HPCHEM1\ECD\_S\Method\PS072118.M  
 Quant Title : 8080.M  
 QLast Update : Sat Jul 21 01:18:58 2018  
 Response via : Initial Calibration  
 Integrator: ChemStation

Volume Inj. : 2 µl  
 Signal #1 Phase : Rtx-CLPesticides Signal #2 Phase: Rtx-CLPesticides2  
 Signal #1 Info : 30M x 0.32mm x0.5 Signal #2 Info : 30M x 0.32mm x 0.25µm

Compound	RT#1	RT#2	Resp#1	Resp#2	ng/ml	ng/ml
-----						
System Monitoring Compounds						
4) S 2,4-DCAA	11.635	11.038	98800792	84843150	532.476	466.492
Target Compounds						
1) T Dalapon	2.979	2.452	10670947	1910000	45.001	8.382 #
3) T 4-Nitroph...	11.204	10.195	2269619	9760534	19.721	95.749 #
5) T DICAMBA	0.000	11.283	0	6247797	N.D.	9.116 #
6) T MCPP	12.329	0.000	6778155	0	13.486	N.D. #
8) T DICHLORPROP	0.000	12.462	0	1972100	N.D.	11.133 #
14) T DINOSEB	0.000	15.735	0	7566710	N.D.	10.645 #
15) T Picloram	17.172	16.979	3067632	25012196	1.941	18.144 #
16) T DCPA	0.000	16.979	0	25012196	N.D.	17.318 #
-----						

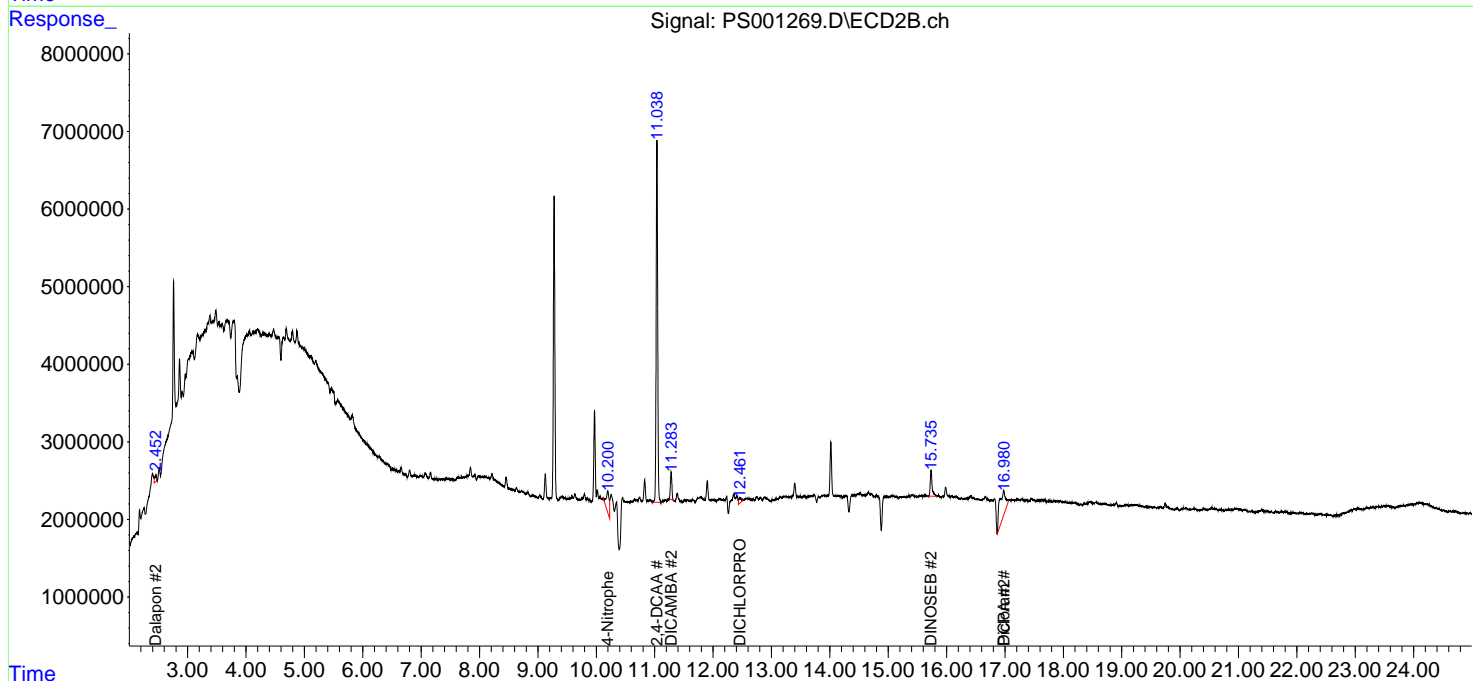
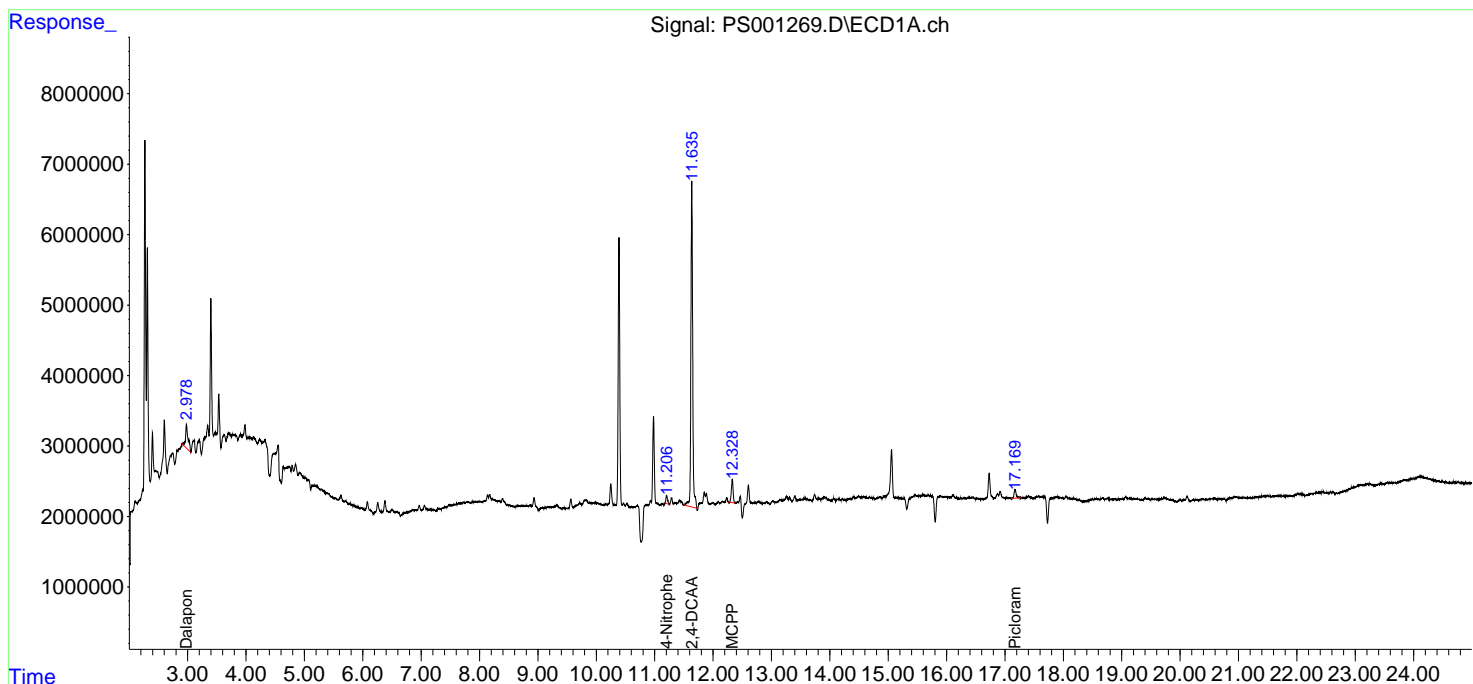
(f)=RT Delta > 1/2 Window (#)=Amounts differ by > 25% (m)=manual int.

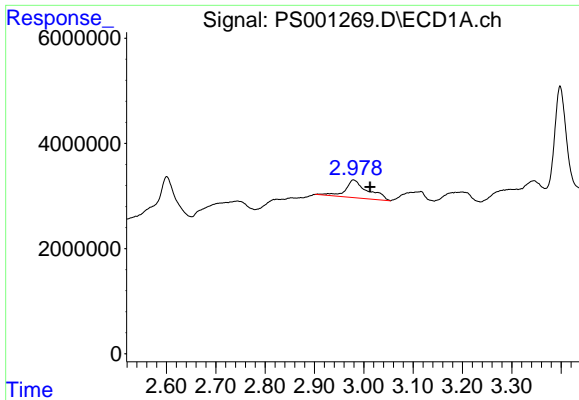
Data Path : Z:\pestpcbsrv\HPCHEM1\ECD\_S\Data\PS072618\  
 Data File : PS001269.D  
 Signal(s) : Signal #1: ECD1A.ch Signal #2: ECD2B.ch  
 Acq On : 26 Jul 2018 22:38  
 Operator : UA  
 Sample : PB111484BL  
 Misc :  
 ALS Vial : 21 Sample Multiplier: 1

Instrument :  
 ECD\_S  
 ClientSampled :

Integration File signal 1: autoint1.e  
 Integration File signal 2: autoint2.e  
 Quant Time: Jul 27 00:51:13 2018  
 Quant Method : Z:\pestpcbsrv\HPCHEM1\ECD\_S\Method\PS072118.M  
 Quant Title : 8080.M  
 QLast Update : Sat Jul 21 01:18:58 2018  
 Response via : Initial Calibration  
 Integrator: ChemStation

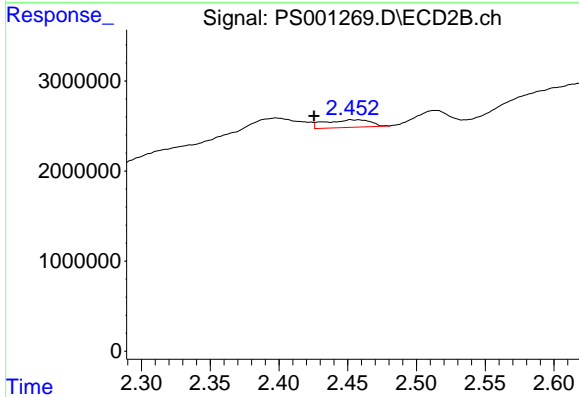
Volume Inj. : 2 µl  
 Signal #1 Phase : Rtx-CLPesticides Signal #2 Phase: Rtx-CLPesticides2  
 Signal #1 Info : 30M x 0.32mm x 0.5 Signal #2 Info : 30M x 0.32mm x 0.25µm



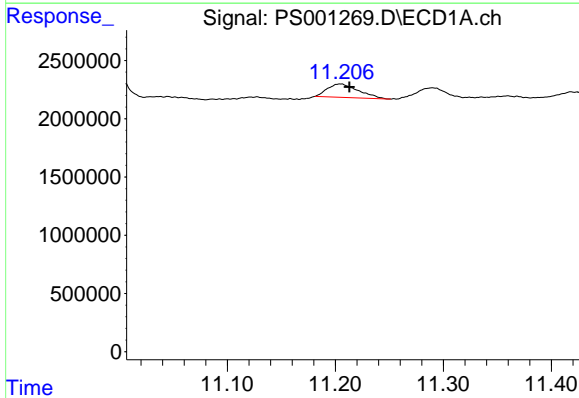


#1 Dalapon  
 R.T.: 2.979 min  
 Delta R.T.: -0.034 min  
 Response: 10670947  
 Conc: 45.00 ng/ml

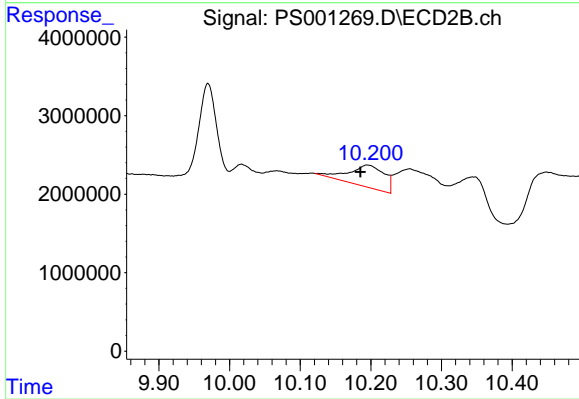
Instrument :  
 ECD\_S  
 ClientSampleId :



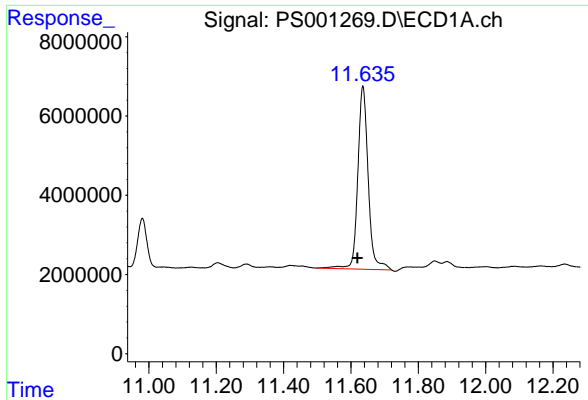
#1 Dalapon  
 R.T.: 2.452 min  
 Delta R.T.: 0.026 min  
 Response: 1910000  
 Conc: 8.38 ng/ml



#3 4-Nitrophenol  
 R.T.: 11.204 min  
 Delta R.T.: -0.008 min  
 Response: 2269619  
 Conc: 19.72 ng/ml

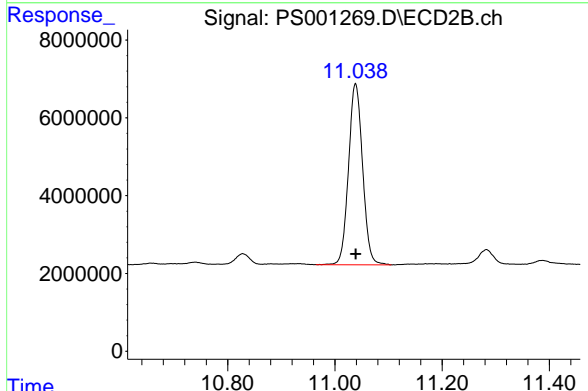


#3 4-Nitrophenol  
 R.T.: 10.195 min  
 Delta R.T.: 0.010 min  
 Response: 9760534  
 Conc: 95.75 ng/ml

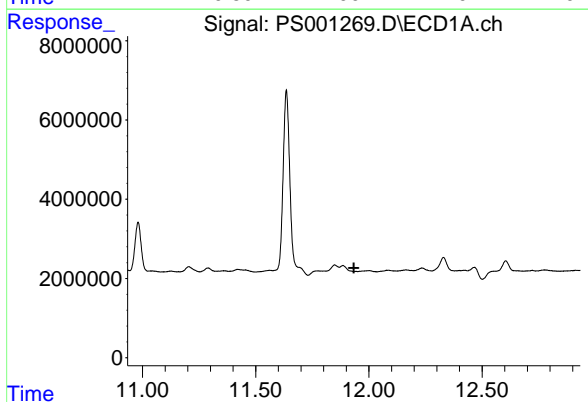


#4 2,4-DCAA  
 R.T.: 11.635 min  
 Delta R.T.: 0.016 min  
 Response: 98800792  
 Conc: 532.48 ng/ml

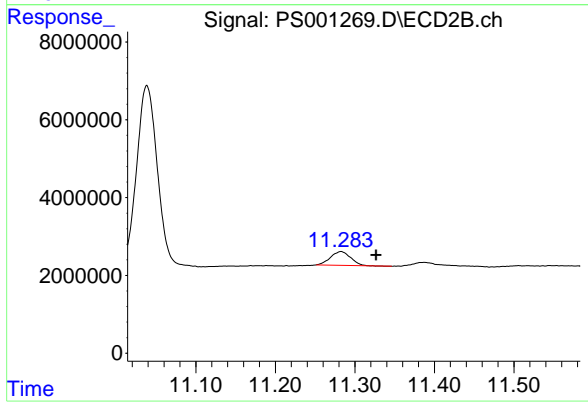
Instrument :  
 ECD\_S  
 ClientSampled :



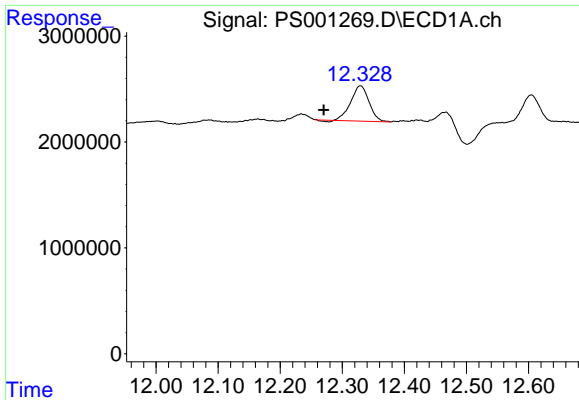
#4 2,4-DCAA  
 R.T.: 11.038 min  
 Delta R.T.: 0.000 min  
 Response: 84843150  
 Conc: 466.49 ng/ml



#5 DICAMBA  
 R.T.: 0.000 min  
 Exp R.T. : 11.934 min  
 Response: 0  
 Conc: N.D.

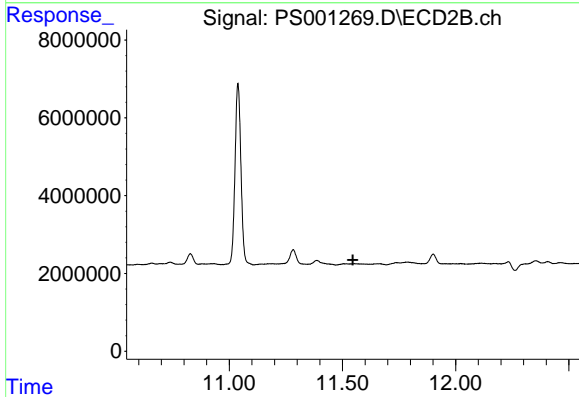


#5 DICAMBA  
 R.T.: 11.283 min  
 Delta R.T.: -0.044 min  
 Response: 6247797  
 Conc: 9.12 ng/ml

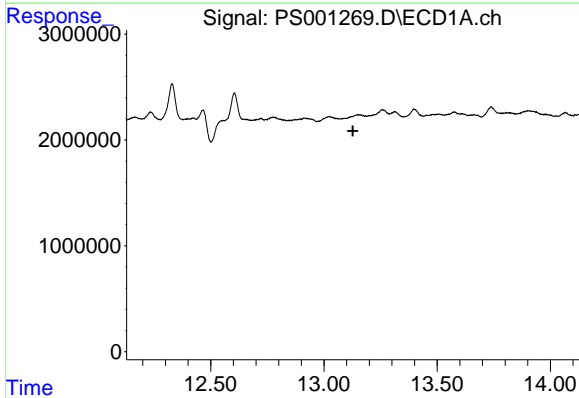


#6 MCPP  
 R.T.: 12.329 min  
 Delta R.T.: 0.059 min  
 Response: 6778155  
 Conc: 13.49 ug/ml

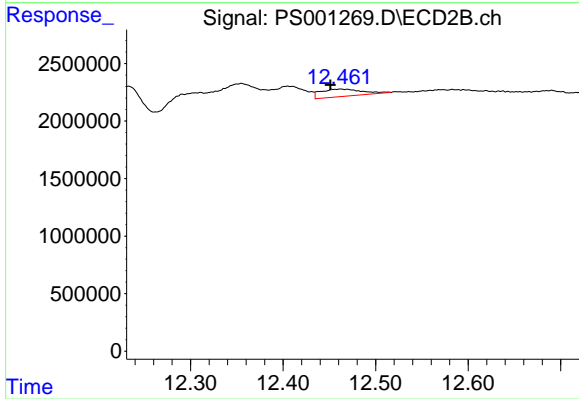
Instrument :  
 ECD\_S  
 ClientSampled :



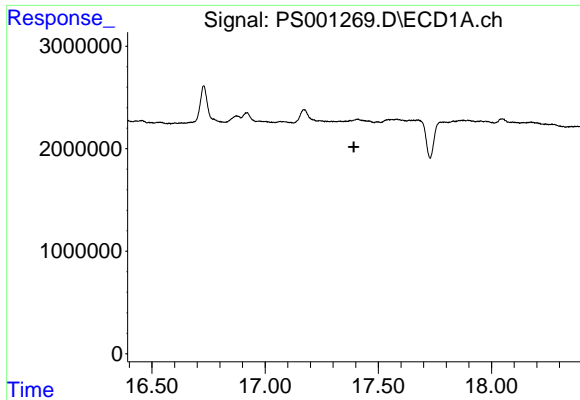
#6 MCPP  
 R.T.: 0.000 min  
 Exp R.T. : 11.546 min  
 Response: 0  
 Conc: N.D.



#8 DICHLORPROP  
 R.T.: 0.000 min  
 Exp R.T. : 13.128 min  
 Response: 0  
 Conc: N.D.



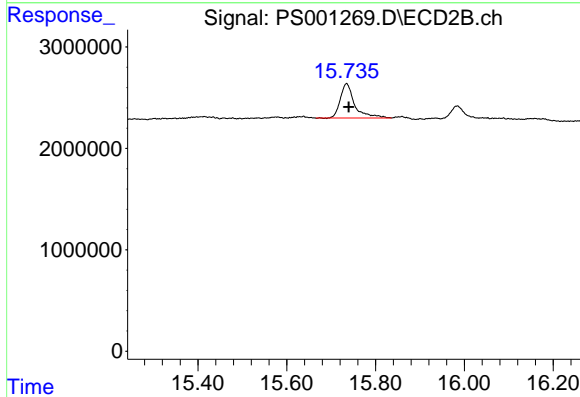
#8 DICHLORPROP  
 R.T.: 12.462 min  
 Delta R.T.: 0.011 min  
 Response: 1972100  
 Conc: 11.13 ng/ml



#14 DINOSEB

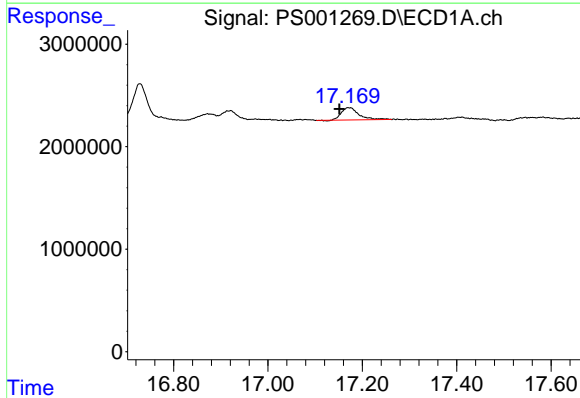
R.T.: 0.000 min  
 Exp R.T.: 17.392 min  
 Response: 0  
 Conc: N.D.

Instrument :  
 ECD\_S  
 ClientSampleId :



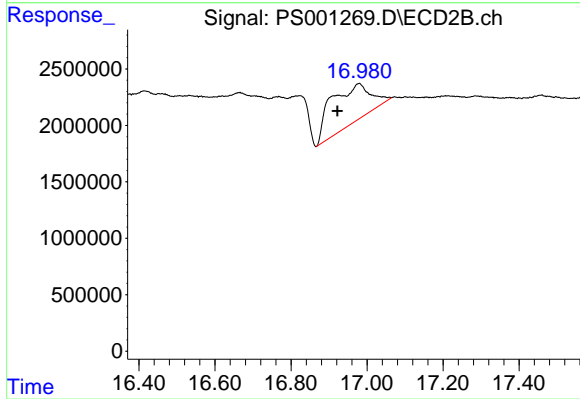
#14 DINOSEB

R.T.: 15.735 min  
 Delta R.T.: -0.005 min  
 Response: 7566710  
 Conc: 10.65 ng/ml



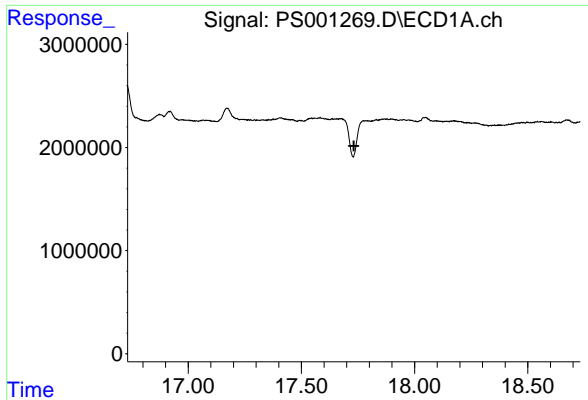
#15 Picloram

R.T.: 17.172 min  
 Delta R.T.: 0.020 min  
 Response: 3067632  
 Conc: 1.94 ng/ml



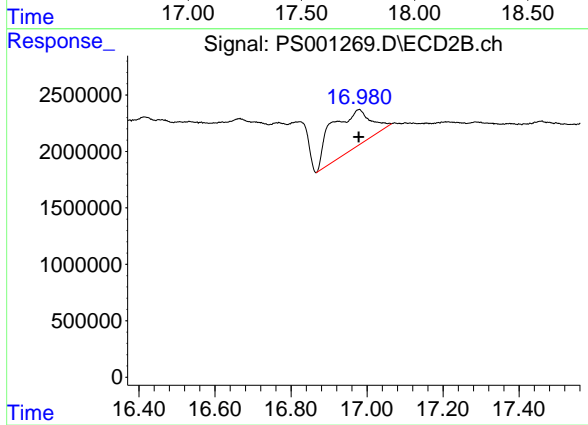
#15 Picloram

R.T.: 16.979 min  
 Delta R.T.: 0.057 min  
 Response: 25012196  
 Conc: 18.14 ng/ml



#16 DCPA  
 R.T.: 0.000 min  
 Exp R.T.: 17.732 min  
 Response: 0  
 Conc: N.D.

Instrument :  
 ECD\_S  
 ClientSampleId :



#16 DCPA  
 R.T.: 16.979 min  
 Delta R.T.: 0.000 min  
 Response: 25012196  
 Conc: 17.32 ng/ml