

Data Path : Z:\pestpcbsrv\HPCHEM1\ECD_S\Data\PS072621\
 Data File : PS016194.D
 Signal(s) : Signal #1: ECD1A.ch Signal #2: ECD2B.ch
 Acq On : 26 Jul 2021 14:51
 Operator : DD\AJ
 Sample : HSTDCCC750
 Misc :
 ALS Vial : 3 Sample Multiplier: 1

Instrument :
 ECD_S
 ClientSampleId :

Integration File signal 1: autoint1.e
 Integration File signal 2: autoint2.e
 Quant Time: Jul 27 02:39:34 2021
 Quant Method : Z:\pestpcbsrv\HPCHEM1\ECD_S\Method\PS063021.M
 Quant Title : 8080.M
 QLast Update : Wed Jun 30 00:31:48 2021
 Response via : Initial Calibration
 Integrator: ChemStation

Volume Inj. : 2 µl
 Signal #1 Phase : Rtx-CLPesticides Signal #2 Phase: Rtx-CLPesticides2
 Signal #1 Info : 30M x 0.32mm x0.5 Signal #2 Info : 30M x 0.32mm x 0.25µm

	Compound	RT#1	RT#2	Resp#1	Resp#2	ng/ml	ng/ml

System Monitoring Compounds							
4) S	2,4-DCAA	7.185	6.765	1097.0E6	383.6E6	714.591	747.273
Target Compounds							
1) T	Dalapon	3.016	2.518	1491.3E6	489.2E6	687.594	699.976
2) T	3,5-DICHL...	6.403	5.957	1511.7E6	557.2E6	696.964	723.856
3) T	4-Nitroph...	7.013	6.386	557.8E6	212.0E6	630.726	671.662
5) T	DICAMBA	7.376	6.928	3888.3E6	1509.0E6	678.681	716.390
6) T	MCP P	7.546	7.025	303.9E6	120.4E6	69.310	72.584
7) T	MCPA	7.694	7.237	432.6E6	186.5E6	68.020	70.773
8) T	DICHLORPROP	8.068	7.548	922.5E6	370.7E6	663.194	703.978
9) T	2,4-D	8.297	7.839	1047.7E6	437.4E6	653.568	693.592
10) T	Pentachlo...	8.605	8.267	14373.3E6	5368.8E6	725.304	746.359
11) T	2,4,5-TP ...	9.156	8.627	5018.7E6	2041.5E6	676.351	723.531
12) T	2,4,5-T	9.440	9.004	5238.9E6	2060.6E6	670.909	714.303
13) T	2,4-DB	9.990	9.510	1034.5E6	267.7E6	622.802	712.198
14) T	DINOSEB	11.148	9.837	4063.6E6	1573.5E6	741.230	770.662
15) T	Picloram	10.967	10.815	6728.1E6	2732.8E6	611.633	656.842
16) T	DCPA	11.416	10.768	7488.8E6	3197.2E6	694.256	743.456

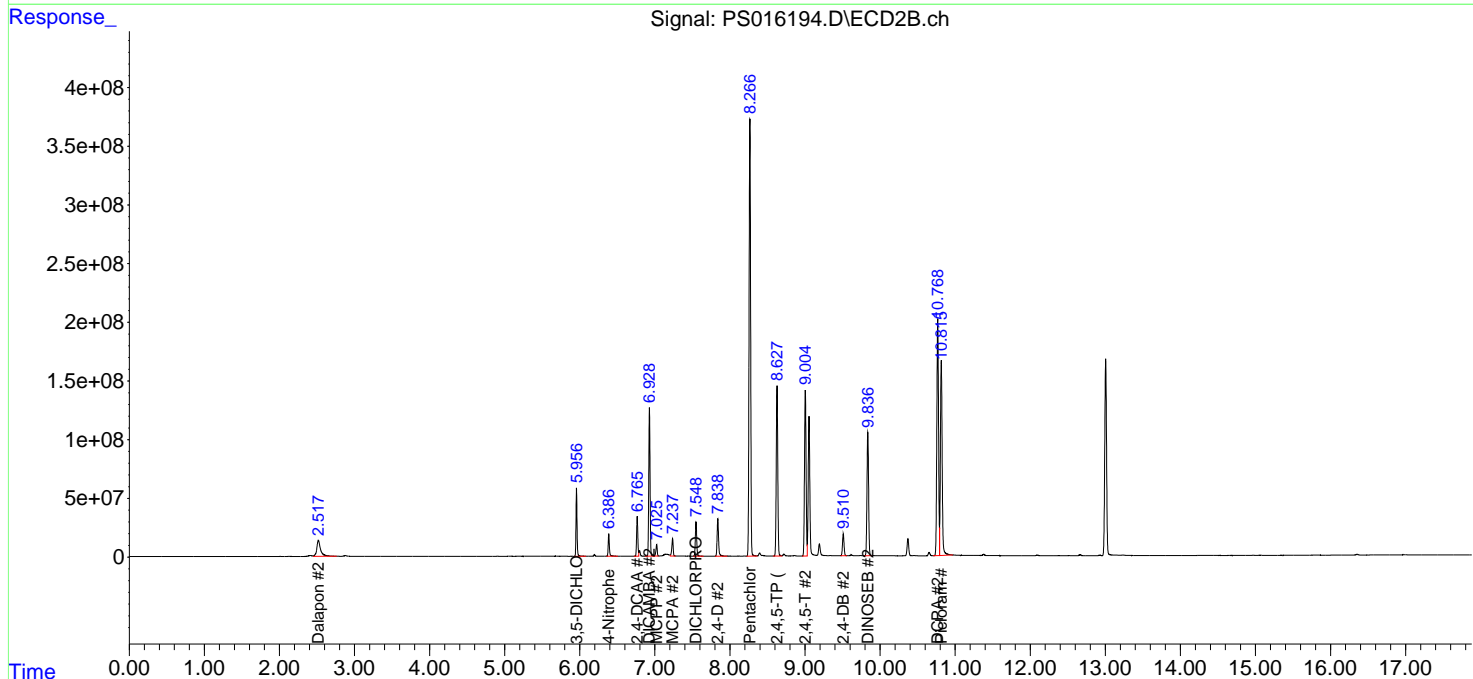
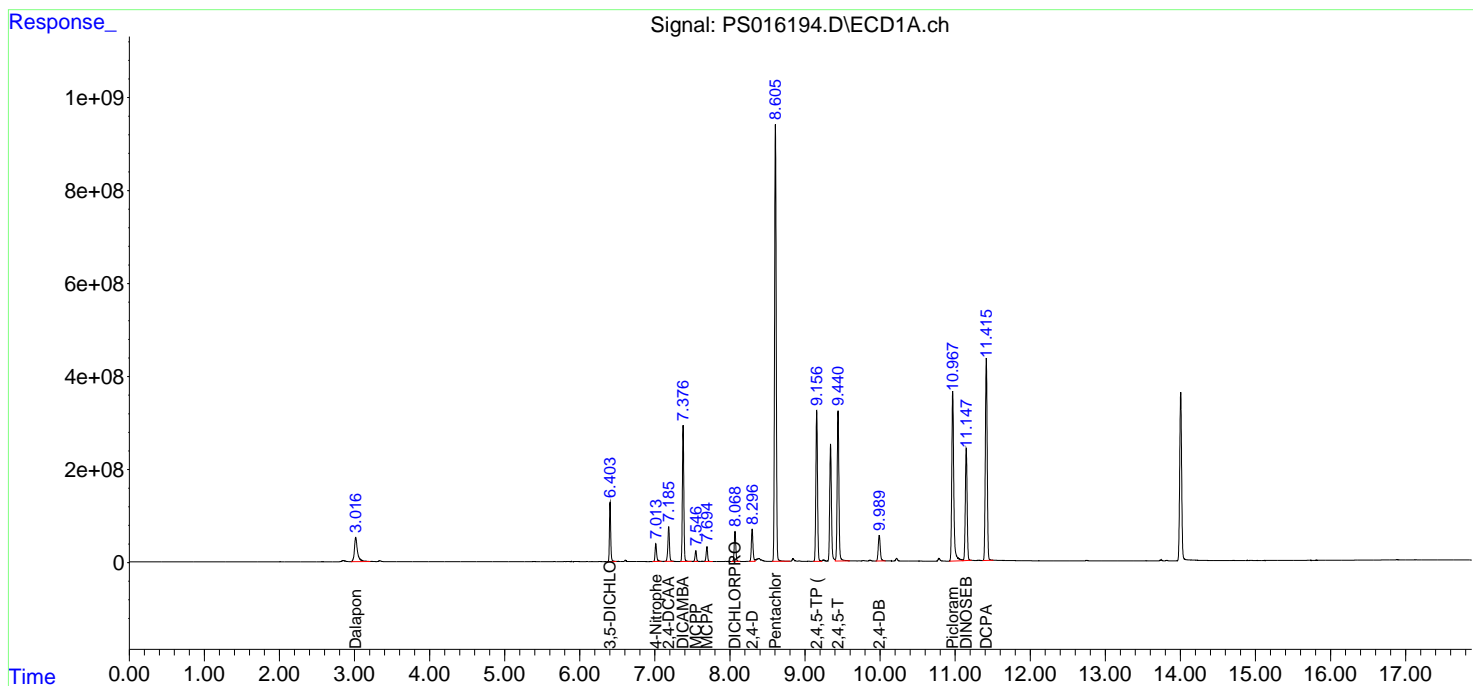
(f)=RT Delta > 1/2 Window (#)=Amounts differ by > 25% (m)=manual int.

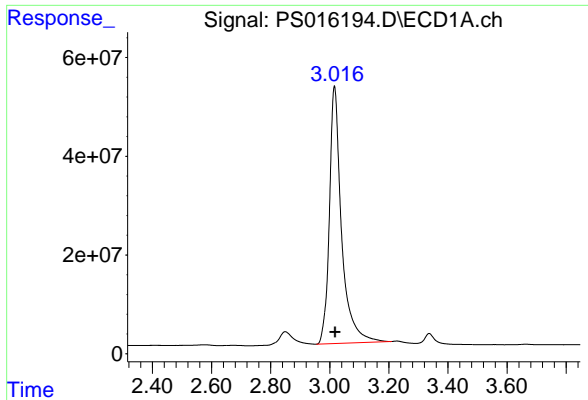
Data Path : Z:\pestpcbsrv\HPCHEM1\ECD_S\Data\PS072621\
 Data File : PS016194.D
 Signal(s) : Signal #1: ECD1A.ch Signal #2: ECD2B.ch
 Acq On : 26 Jul 2021 14:51
 Operator : DD\AJ
 Sample : HSTDCCC750
 Misc :
 ALS Vial : 3 Sample Multiplier: 1

Instrument :
 ECD_S
 ClientSampled :

Integration File signal 1: autoint1.e
 Integration File signal 2: autoint2.e
 Quant Time: Jul 27 02:39:34 2021
 Quant Method : Z:\pestpcbsrv\HPCHEM1\ECD_S\Method\PS063021.M
 Quant Title : 8080.M
 QLast Update : Wed Jun 30 00:31:48 2021
 Response via : Initial Calibration
 Integrator: ChemStation

Volume Inj. : 2 µl
 Signal #1 Phase : Rtx-CLPesticides Signal #2 Phase: Rtx-CLPesticides2
 Signal #1 Info : 30M x 0.32mm x0.5 Signal #2 Info : 30M x 0.32mm x 0.25µm

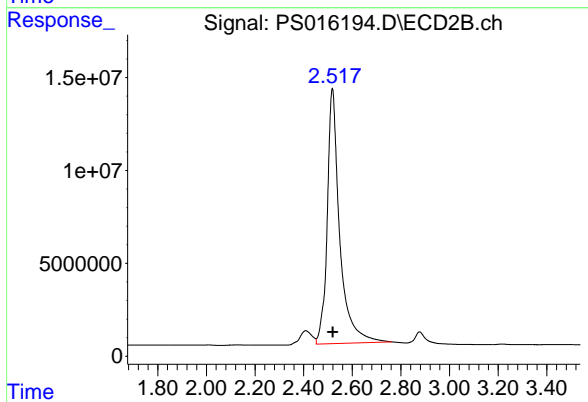




#1 Dalapon

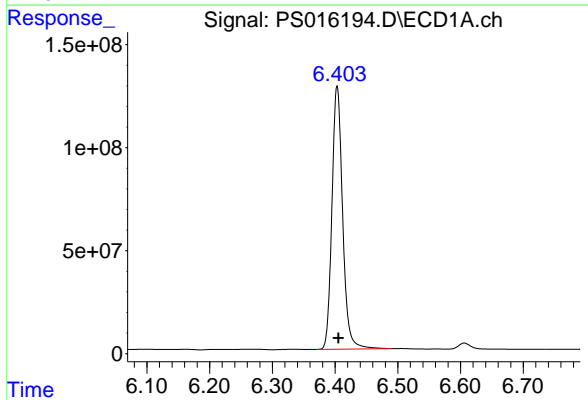
R.T.: 3.016 min
 Delta R.T.: -0.002 min
 Response: 1491306681
 Conc: 687.59 ng/ml

Instrument :
 ECD_S
 ClientSampleId :



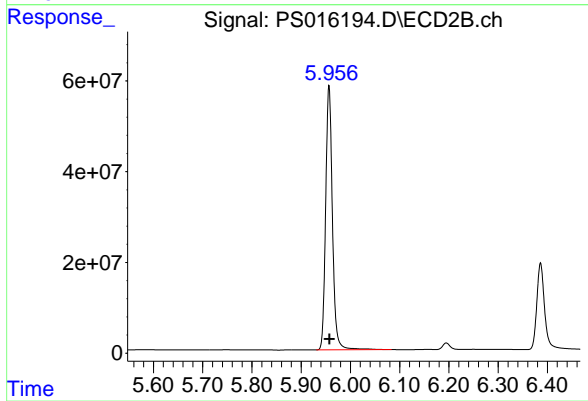
#1 Dalapon

R.T.: 2.518 min
 Delta R.T.: -0.001 min
 Response: 489230752
 Conc: 699.98 ng/ml



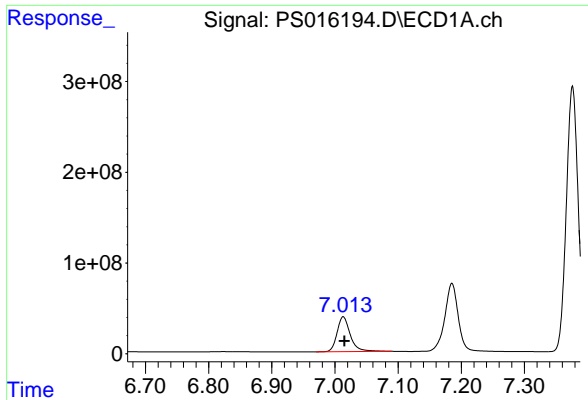
#2 3,5-DICHLOROBENZOIC ACID

R.T.: 6.403 min
 Delta R.T.: -0.002 min
 Response: 1511686882
 Conc: 696.96 ng/ml



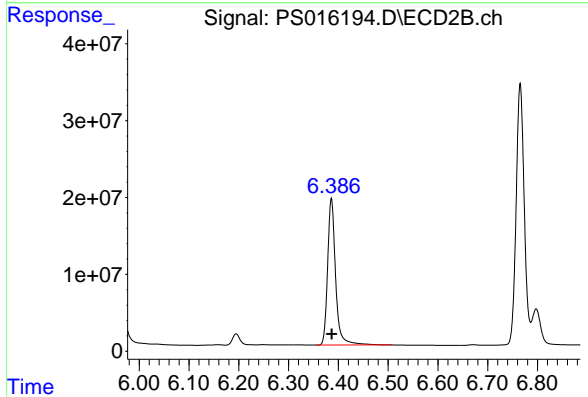
#2 3,5-DICHLOROBENZOIC ACID

R.T.: 5.957 min
 Delta R.T.: -0.001 min
 Response: 557182022
 Conc: 723.86 ng/ml

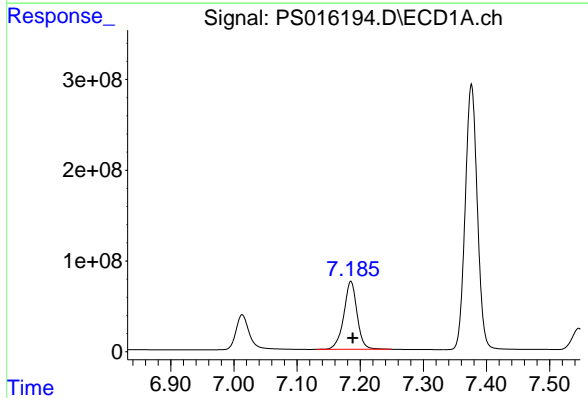


#3 4-Nitrophenol
R.T.: 7.013 min
Delta R.T.: -0.002 min
Response: 557766180
Conc: 630.73 ng/ml

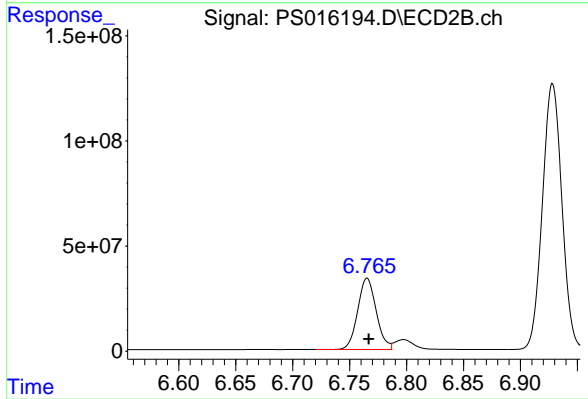
Instrument :
ECD_S
ClientSampleId :



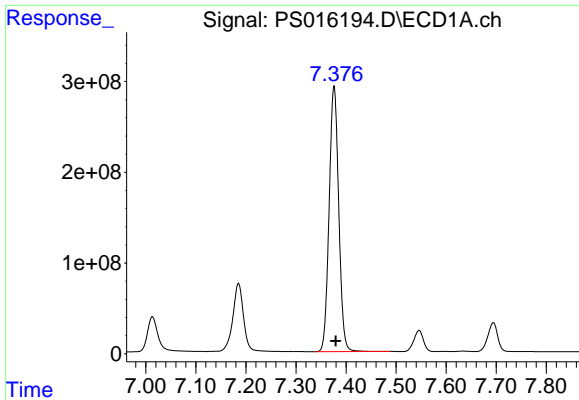
#3 4-Nitrophenol
R.T.: 6.386 min
Delta R.T.: 0.000 min
Response: 211993848
Conc: 671.66 ng/ml



#4 2,4-DCAA
R.T.: 7.185 min
Delta R.T.: -0.003 min
Response: 1097039501
Conc: 714.59 ng/ml



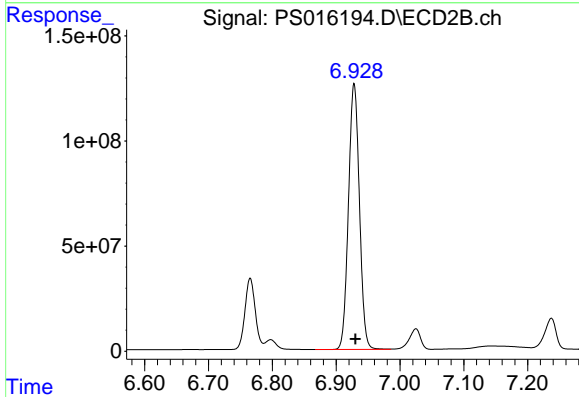
#4 2,4-DCAA
R.T.: 6.765 min
Delta R.T.: -0.001 min
Response: 383587852
Conc: 747.27 ng/ml



#5 DICAMBA

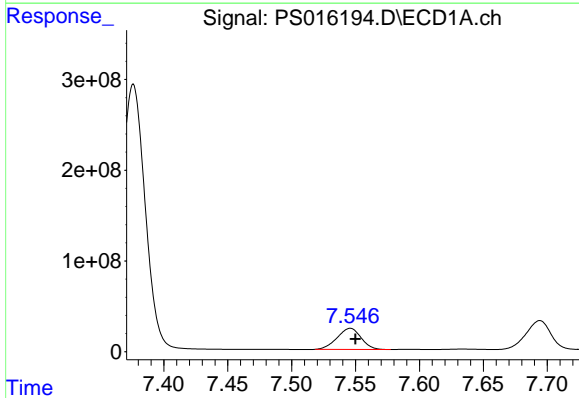
R.T.: 7.376 min
 Delta R.T.: -0.003 min
 Response: 3888280836
 Conc: 678.68 ng/ml

Instrument :
 ECD_S
 ClientSampleId :



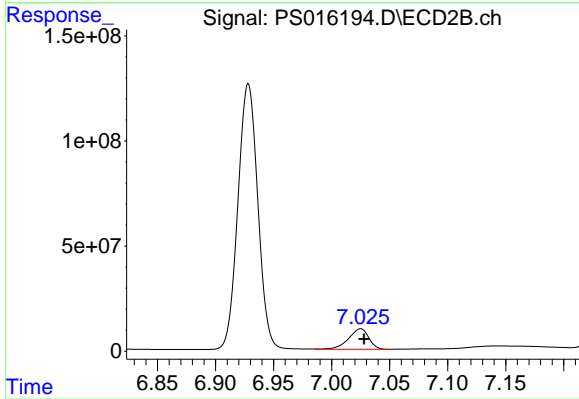
#5 DICAMBA

R.T.: 6.928 min
 Delta R.T.: -0.002 min
 Response: 1509004148
 Conc: 716.39 ng/ml



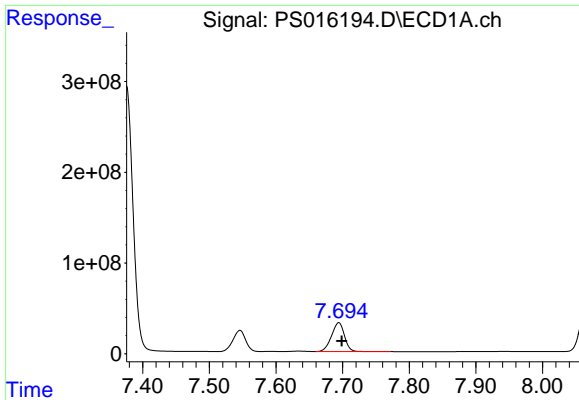
#6 MCPP

R.T.: 7.546 min
 Delta R.T.: -0.004 min
 Response: 303857760
 Conc: 69.31 ug/ml



#6 MCPP

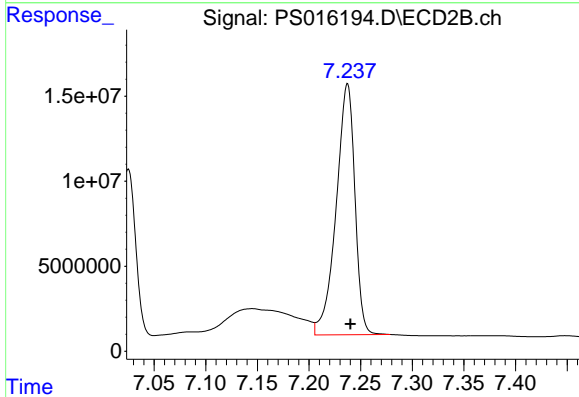
R.T.: 7.025 min
 Delta R.T.: -0.003 min
 Response: 120423011
 Conc: 72.58 ug/ml



#7 MCPA

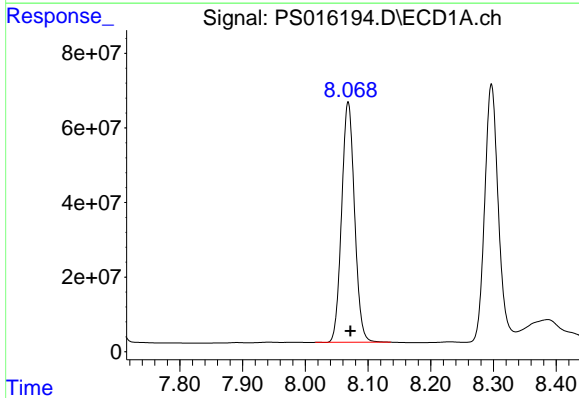
R.T.: 7.694 min
 Delta R.T.: -0.004 min
 Response: 432550080
 Conc: 68.02 ug/ml

Instrument :
 ECD_S
 ClientSampleId :



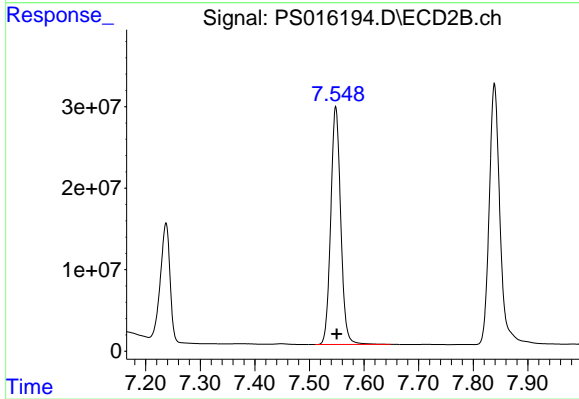
#7 MCPA

R.T.: 7.237 min
 Delta R.T.: -0.003 min
 Response: 186543172
 Conc: 70.77 ug/ml



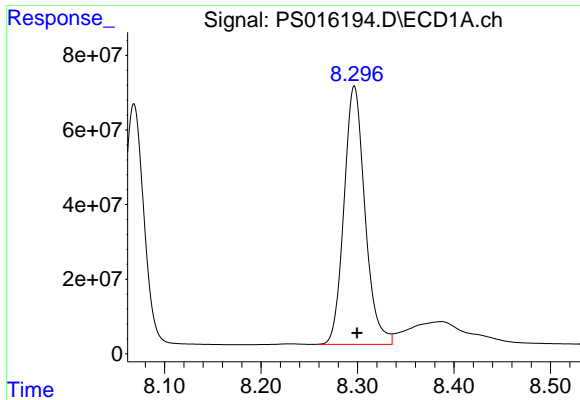
#8 DICHLORPROP

R.T.: 8.068 min
 Delta R.T.: -0.003 min
 Response: 922503562
 Conc: 663.19 ng/ml



#8 DICHLORPROP

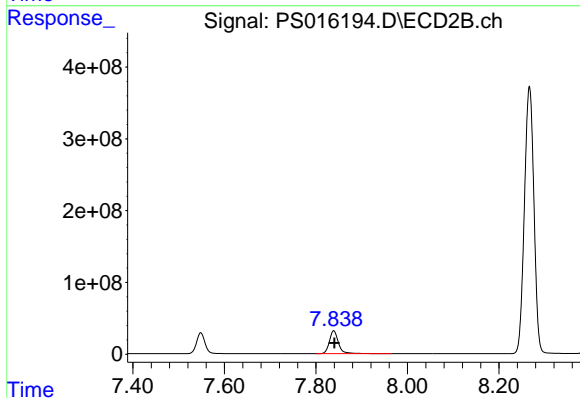
R.T.: 7.548 min
 Delta R.T.: -0.002 min
 Response: 370704583
 Conc: 703.98 ng/ml



#9 2,4-D

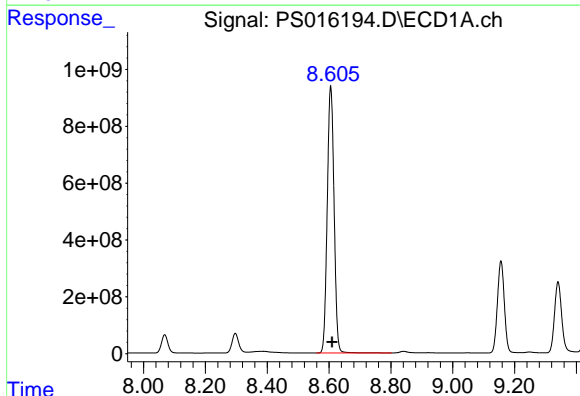
R.T.: 8.297 min
 Delta R.T.: -0.003 min
 Response: 1047707262
 Conc: 653.57 ng/ml

Instrument :
 ECD_S
 ClientSampleId :



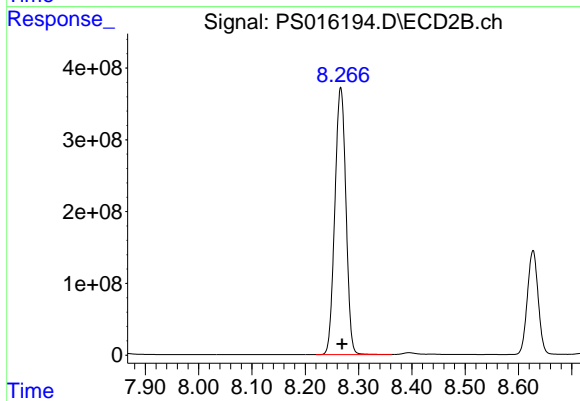
#9 2,4-D

R.T.: 7.839 min
 Delta R.T.: -0.002 min
 Response: 437388940
 Conc: 693.59 ng/ml



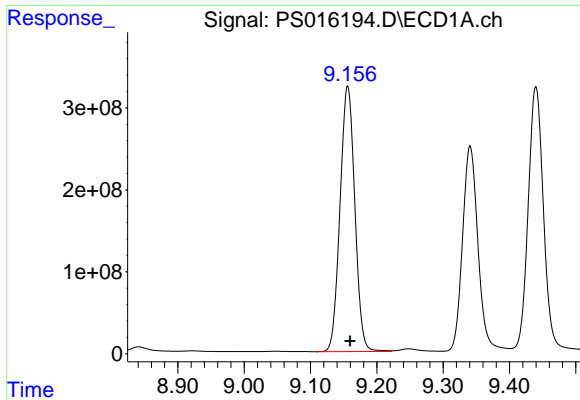
#10 Pentachlorophenol

R.T.: 8.605 min
 Delta R.T.: -0.005 min
 Response: 14373252242
 Conc: 725.30 ng/ml



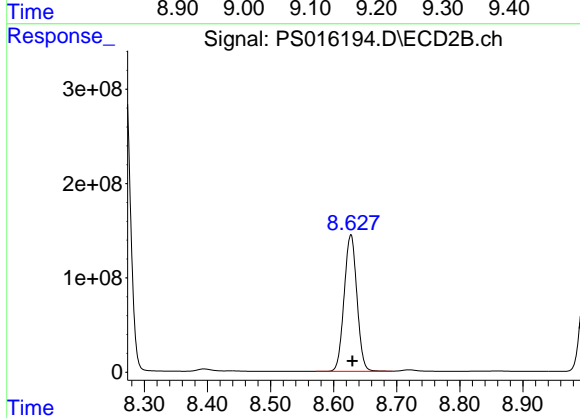
#10 Pentachlorophenol

R.T.: 8.267 min
 Delta R.T.: -0.003 min
 Response: 5368762325
 Conc: 746.36 ng/ml

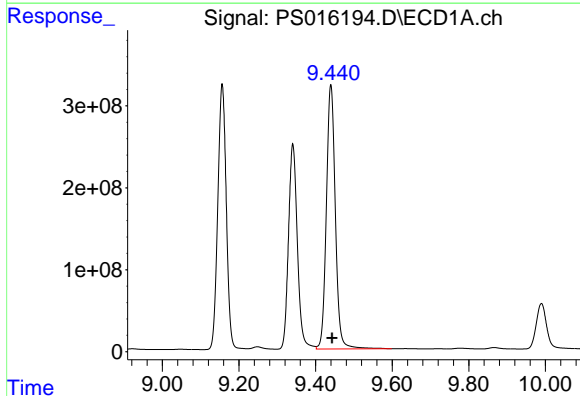


#11 2,4,5-TP (SILVEX)
 R.T.: 9.156 min
 Delta R.T.: -0.004 min
 Response: 5018749575
 Conc: 676.35 ng/ml

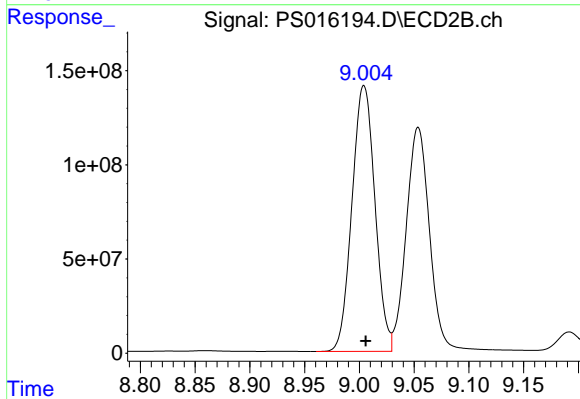
Instrument :
 ECD_S
 ClientSampleId :



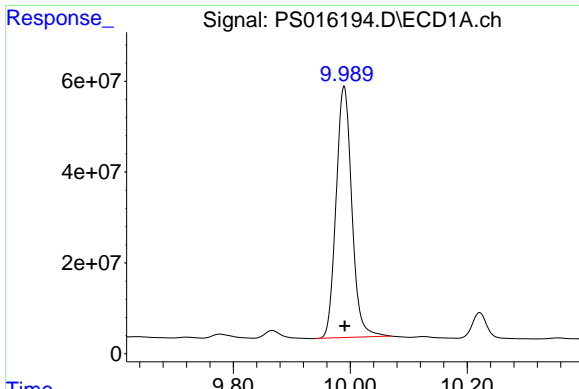
#11 2,4,5-TP (SILVEX)
 R.T.: 8.627 min
 Delta R.T.: -0.003 min
 Response: 2041491136
 Conc: 723.53 ng/ml



#12 2,4,5-T
 R.T.: 9.440 min
 Delta R.T.: -0.004 min
 Response: 5238912621
 Conc: 670.91 ng/ml



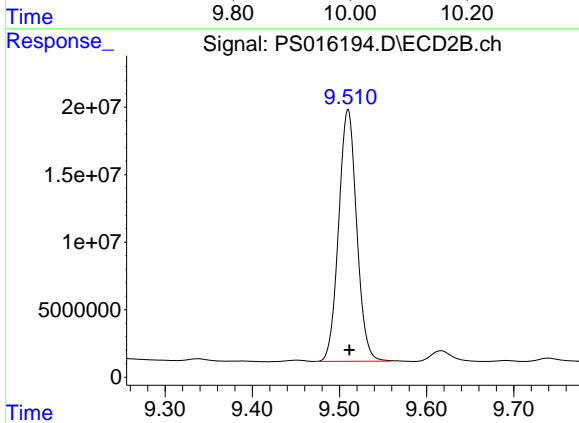
#12 2,4,5-T
 R.T.: 9.004 min
 Delta R.T.: -0.002 min
 Response: 2060573581
 Conc: 714.30 ng/ml



#13 2,4-DB

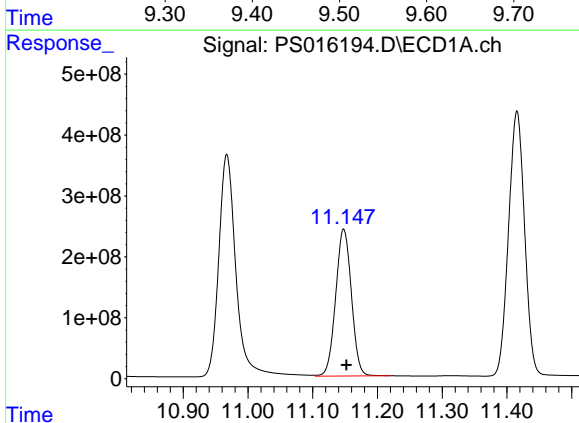
R.T.: 9.990 min
 Delta R.T.: -0.001 min
 Response: 1034528872
 Conc: 622.80 ng/ml

Instrument :
 ECD_S
 ClientSampleId :



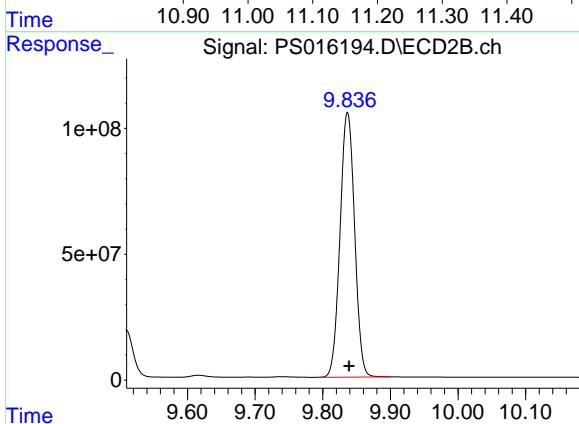
#13 2,4-DB

R.T.: 9.510 min
 Delta R.T.: -0.002 min
 Response: 267741997
 Conc: 712.20 ng/ml



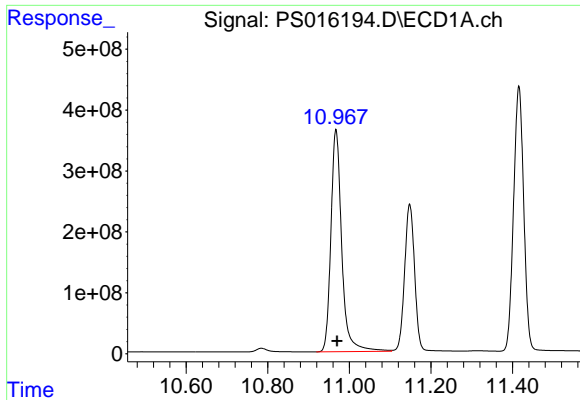
#14 DINOSEB

R.T.: 11.148 min
 Delta R.T.: -0.004 min
 Response: 4063600788
 Conc: 741.23 ng/ml



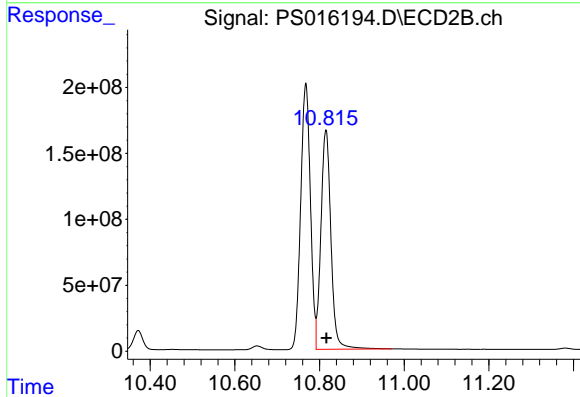
#14 DINOSEB

R.T.: 9.837 min
 Delta R.T.: -0.002 min
 Response: 1573549117
 Conc: 770.66 ng/ml

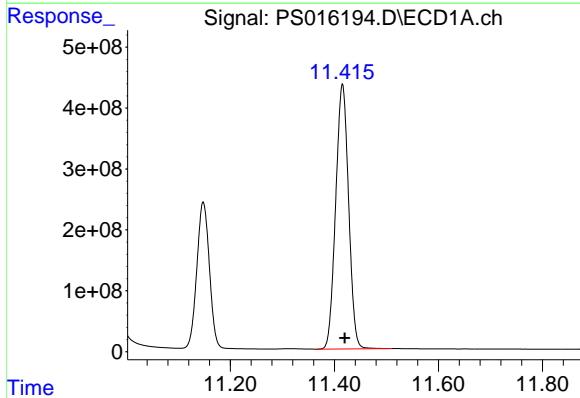


#15 Picloram
 R.T.: 10.967 min
 Delta R.T.: -0.003 min
 Response: 6728091911
 Conc: 611.63 ng/ml

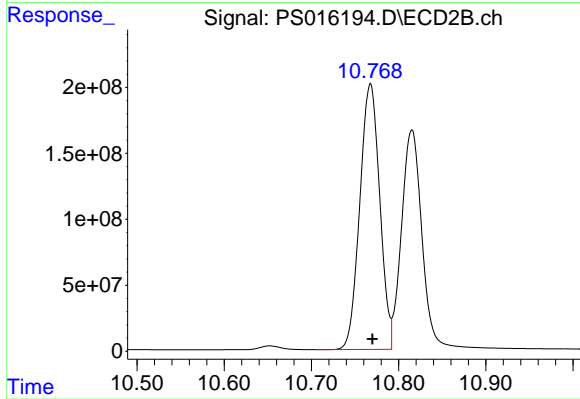
Instrument :
 ECD_S
 ClientSampled :



#15 Picloram
 R.T.: 10.815 min
 Delta R.T.: 0.000 min
 Response: 2732848731
 Conc: 656.84 ng/ml



#16 DCPA
 R.T.: 11.416 min
 Delta R.T.: -0.004 min
 Response: 7488802995
 Conc: 694.26 ng/ml



#16 DCPA
 R.T.: 10.768 min
 Delta R.T.: -0.002 min
 Response: 3197178154
 Conc: 743.46 ng/ml