

Data Path : Z:\pestpcbsrv\HPCHEM1\ECD_S\Data\PS072621\
 Data File : PS016199.D
 Signal(s) : Signal #1: ECD1A.ch Signal #2: ECD2B.ch
 Acq On : 26 Jul 2021 16:53
 Operator : DD\AJ
 Sample : HSTDCCC750
 Misc :
 ALS Vial : 3 Sample Multiplier: 1

Instrument :
 ECD_S
 ClientSampleId :

Integration File signal 1: autoint1.e
 Integration File signal 2: autoint2.e
 Quant Time: Jul 27 02:40:36 2021
 Quant Method : Z:\pestpcbsrv\HPCHEM1\ECD_S\Method\PS063021.M
 Quant Title : 8080.M
 QLast Update : Wed Jun 30 00:31:48 2021
 Response via : Initial Calibration
 Integrator: ChemStation

Volume Inj. : 2 µl
 Signal #1 Phase : Rtx-CLPesticides Signal #2 Phase: Rtx-CLPesticides2
 Signal #1 Info : 30M x 0.32mm x0.5 Signal #2 Info : 30M x 0.32mm x 0.25µm

	Compound	RT#1	RT#2	Resp#1	Resp#2	ng/ml	ng/ml

System Monitoring Compounds							
4) S	2,4-DCAA	7.186	6.766	1103.1E6	385.4E6	718.511	750.742
Target Compounds							
1) T	Dalapon	3.016	2.518	1491.5E6	489.4E6	687.661	700.258
2) T	3,5-DICHL...	6.404	5.957	1516.2E6	559.9E6	699.067	727.368
3) T	4-Nitroph...	7.013	6.387	558.6E6	212.6E6	631.649	673.560
5) T	DICAMBA	7.376	6.929	3903.7E6	1516.6E6	681.370	719.995
6) T	MCP P	7.545	7.026	304.7E6	121.2E6	69.503	73.072
7) T	MCPA	7.695	7.238	433.8E6	186.4E6	68.217	70.735
8) T	DICHLORPROP	8.069	7.549	927.4E6	372.3E6	666.720	706.998
9) T	2,4-D	8.297	7.840	1053.4E6	439.6E6	657.151	697.064
10) T	Pentachlo...	8.606	8.267	14462.8E6	5395.8E6	729.824	750.124
11) T	2,4,5-TP ...	9.156	8.628	5057.9E6	2054.2E6	681.629	728.025
12) T	2,4,5-T	9.440	9.005	5304.0E6	2072.0E6	679.247	718.266
13) T	2,4-DB	9.990	9.511	1029.1E6	269.0E6	619.512	715.609
14) T	DINOSEB	11.148	9.837	4093.8E6	1583.7E6	746.734	775.643
15) T	Picloram	10.967	10.815	6795.8E6	2763.5E6	617.792	664.203
16) T	DCPA	11.415	10.768	7562.6E6	3213.3E6	701.100	747.201

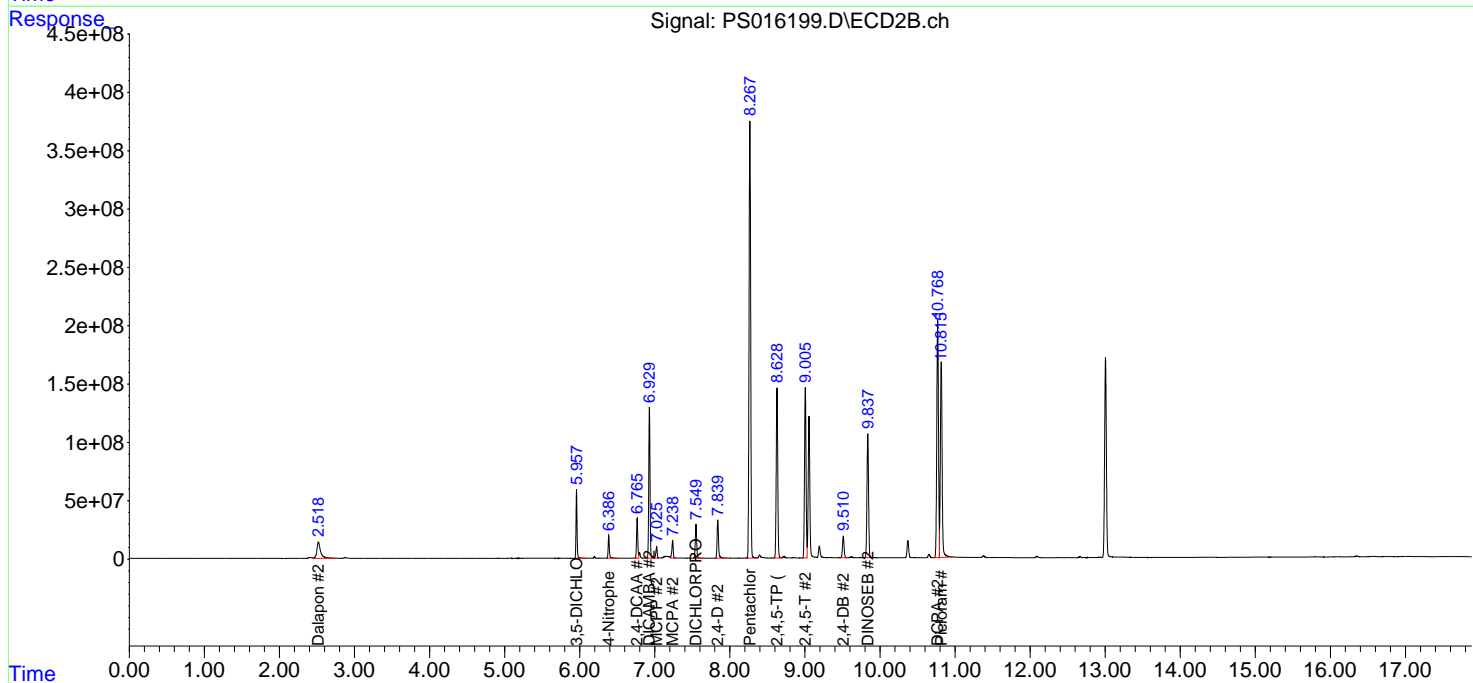
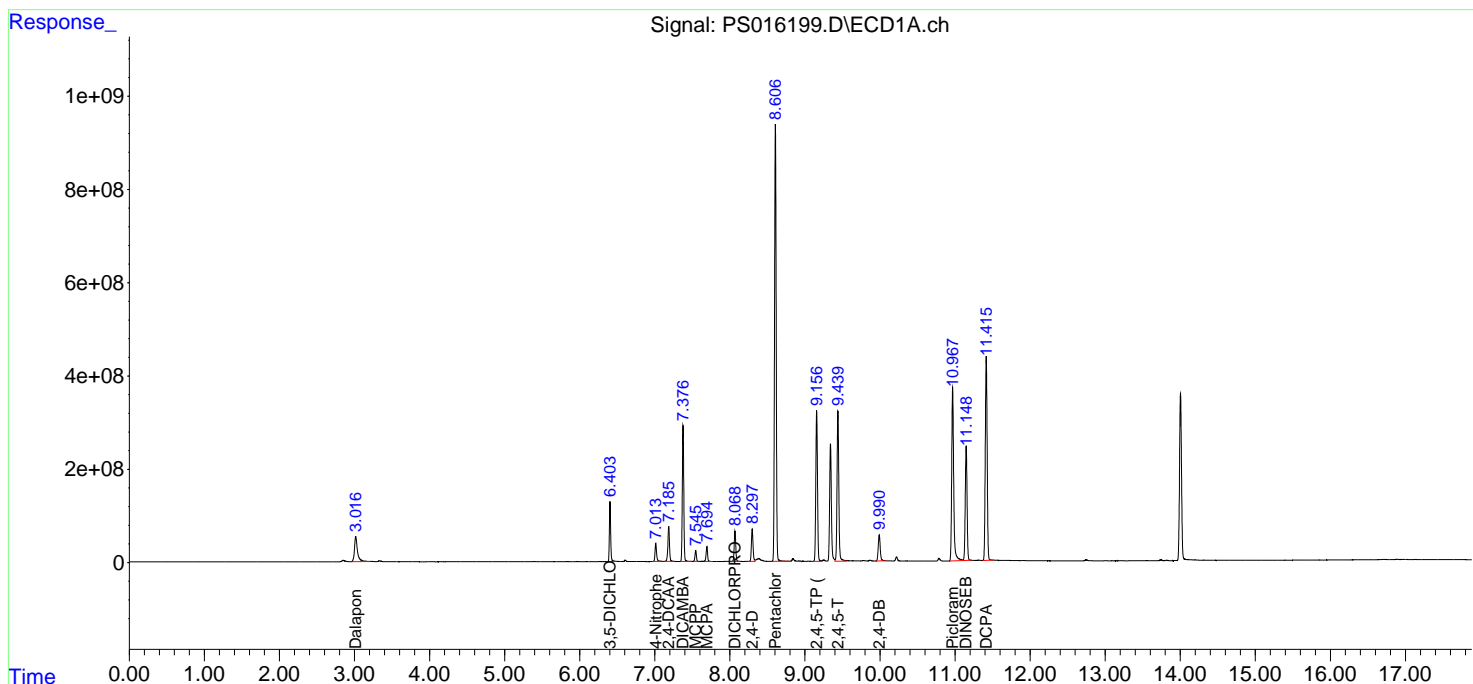
(f)=RT Delta > 1/2 Window (#)=Amounts differ by > 25% (m)=manual int.

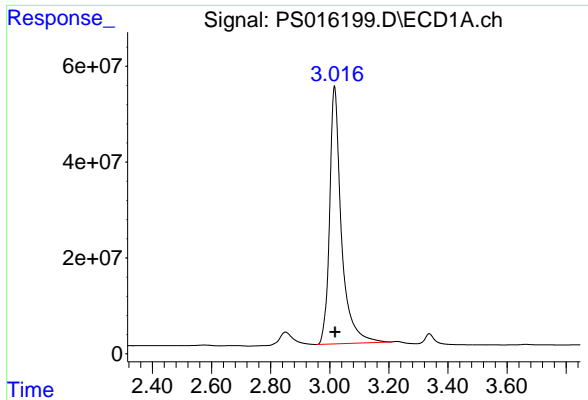
Data Path : Z:\pestpcbsrv\HPCHEM1\ECD_S\Data\PS072621\
 Data File : PS016199.D
 Signal(s) : Signal #1: ECD1A.ch Signal #2: ECD2B.ch
 Acq On : 26 Jul 2021 16:53
 Operator : DD\AJ
 Sample : HSTDCCC750
 Misc :
 ALS Vial : 3 Sample Multiplier: 1

Instrument :
 ECD_S
 ClientSampled :

Integration File signal 1: autoint1.e
 Integration File signal 2: autoint2.e
 Quant Time: Jul 27 02:40:36 2021
 Quant Method : Z:\pestpcbsrv\HPCHEM1\ECD_S\Method\PS063021.M
 Quant Title : 8080.M
 QLast Update : Wed Jun 30 00:31:48 2021
 Response via : Initial Calibration
 Integrator: ChemStation

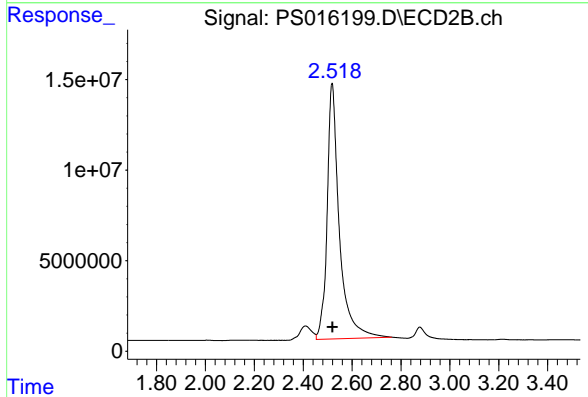
Volume Inj. : 2 µl
 Signal #1 Phase : Rtx-CLPesticides Signal #2 Phase: Rtx-CLPesticides2
 Signal #1 Info : 30M x 0.32mm x0.5 Signal #2 Info : 30M x 0.32mm x 0.25µm



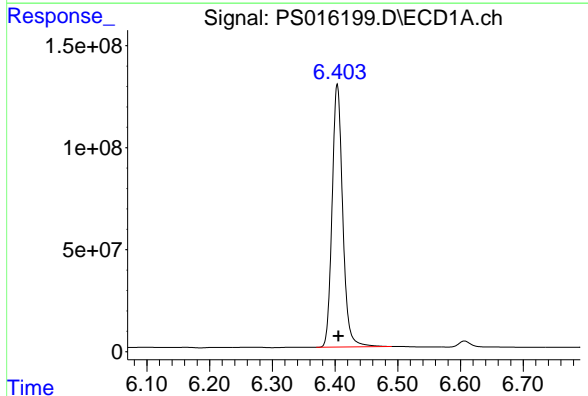


#1 Dalapon
 R.T.: 3.016 min
 Delta R.T.: -0.002 min
 Response: 1491452256
 Conc: 687.66 ng/ml

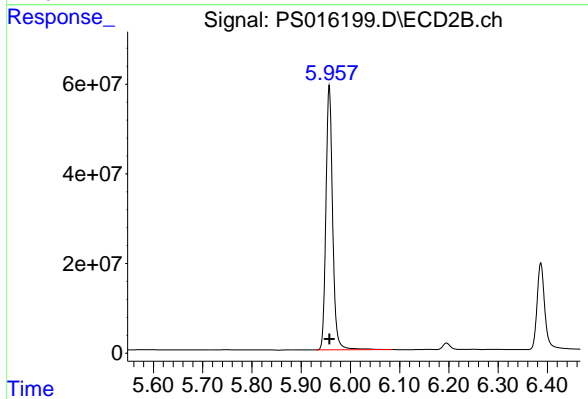
Instrument :
 ECD_S
 ClientSampled :



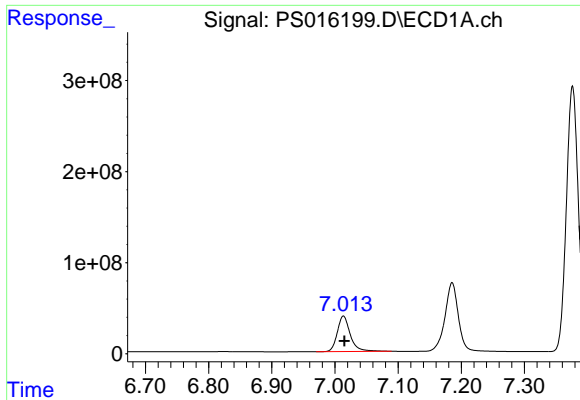
#1 Dalapon
 R.T.: 2.518 min
 Delta R.T.: -0.001 min
 Response: 489428444
 Conc: 700.26 ng/ml



#2 3,5-DICHLOROBENZOIC ACID
 R.T.: 6.404 min
 Delta R.T.: -0.002 min
 Response: 1516247566
 Conc: 699.07 ng/ml

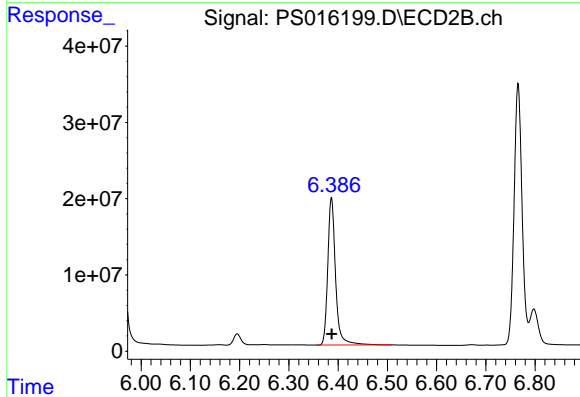


#2 3,5-DICHLOROBENZOIC ACID
 R.T.: 5.957 min
 Delta R.T.: 0.000 min
 Response: 559885177
 Conc: 727.37 ng/ml

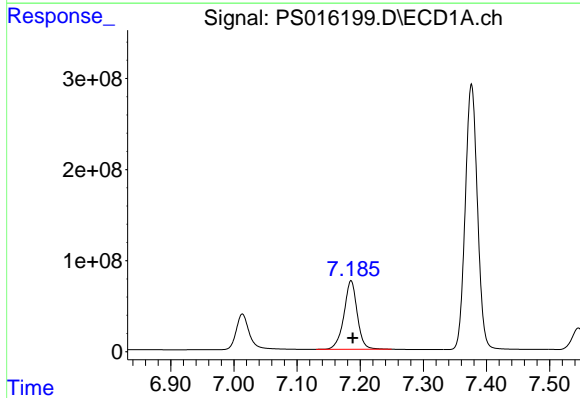


#3 4-Nitrophenol
 R.T.: 7.013 min
 Delta R.T.: -0.002 min
 Response: 558582215
 Conc: 631.65 ng/ml

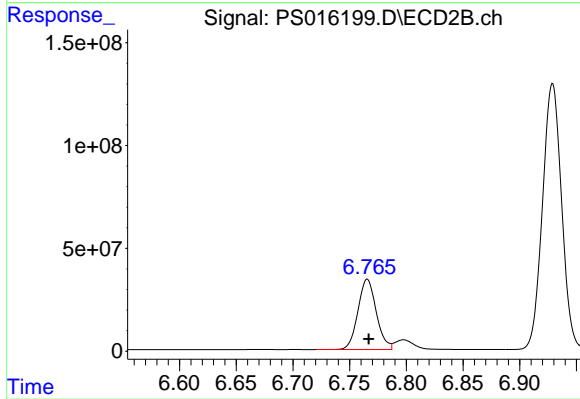
Instrument :
 ECD_S
 ClientSampleId :



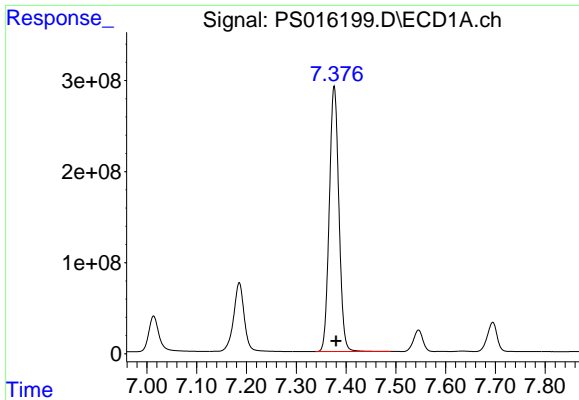
#3 4-Nitrophenol
 R.T.: 6.387 min
 Delta R.T.: 0.000 min
 Response: 212593027
 Conc: 673.56 ng/ml



#4 2,4-DCAA
 R.T.: 7.186 min
 Delta R.T.: -0.002 min
 Response: 1103057578
 Conc: 718.51 ng/ml



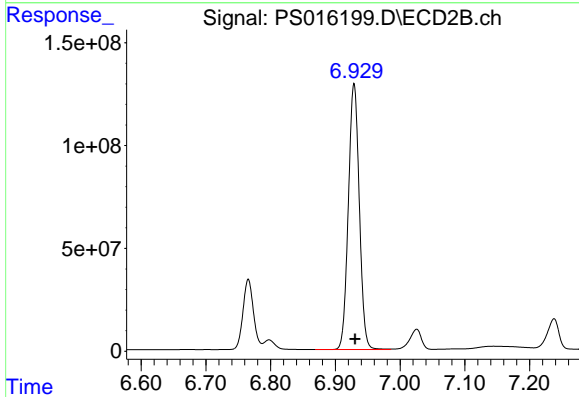
#4 2,4-DCAA
 R.T.: 6.766 min
 Delta R.T.: -0.001 min
 Response: 385368800
 Conc: 750.74 ng/ml



#5 DICAMBA

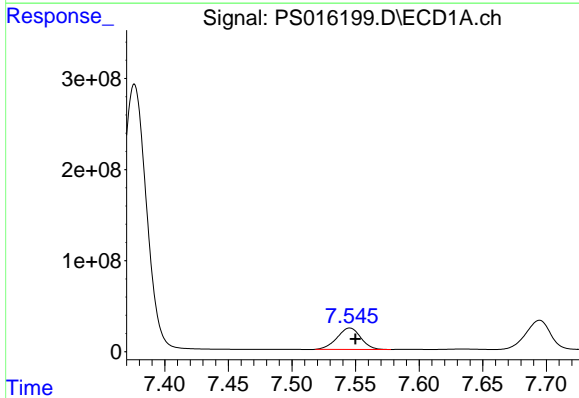
R.T.: 7.376 min
 Delta R.T.: -0.003 min
 Response: 3903686287
 Conc: 681.37 ng/ml

Instrument :
 ECD_S
 ClientSampleId :



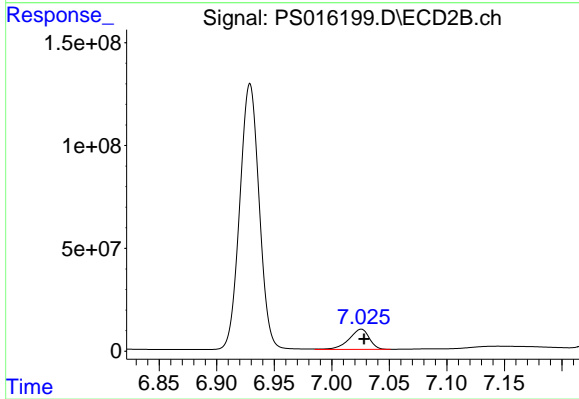
#5 DICAMBA

R.T.: 6.929 min
 Delta R.T.: -0.001 min
 Response: 1516598991
 Conc: 720.00 ng/ml



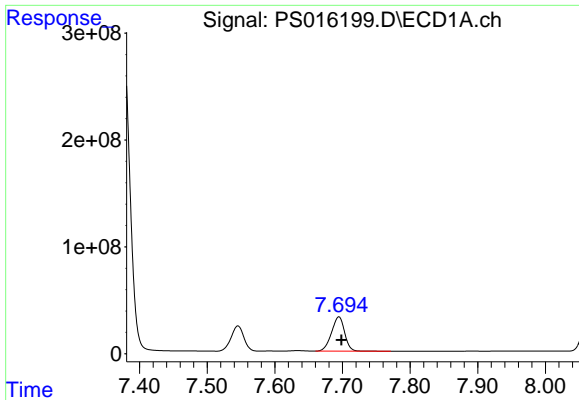
#6 MCP

R.T.: 7.545 min
 Delta R.T.: -0.004 min
 Response: 304700678
 Conc: 69.50 ug/ml



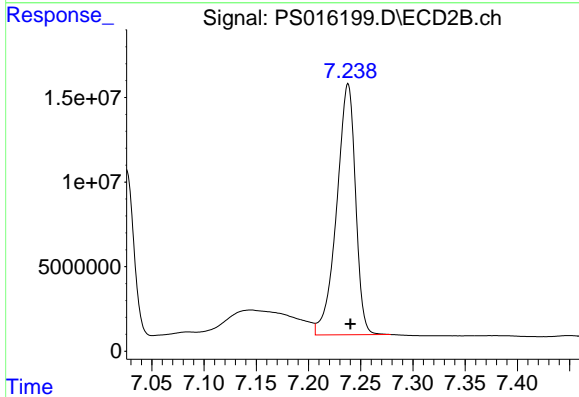
#6 MCP

R.T.: 7.026 min
 Delta R.T.: -0.002 min
 Response: 121232597
 Conc: 73.07 ug/ml

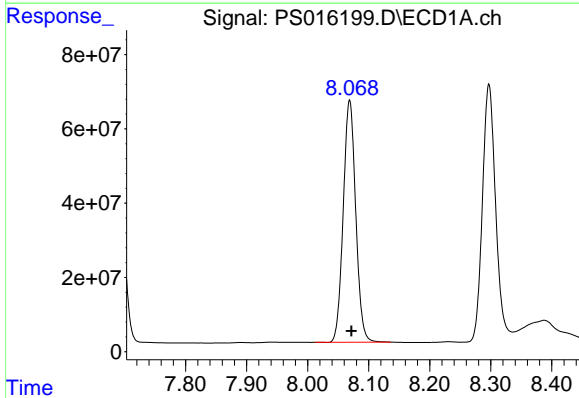


#7 MCPA
 R.T.: 7.695 min
 Delta R.T.: -0.004 min
 Response: 433804574
 Conc: 68.22 ug/ml

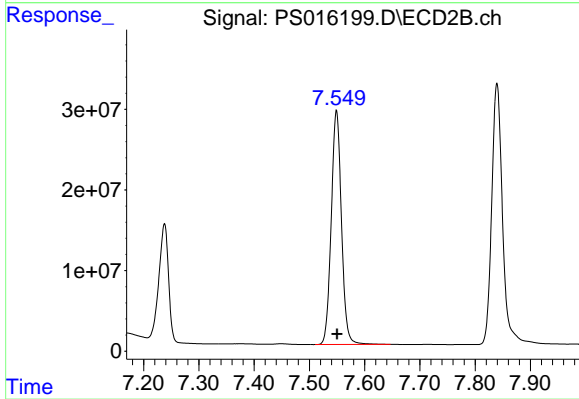
Instrument :
 ECD_S
 ClientSampled :



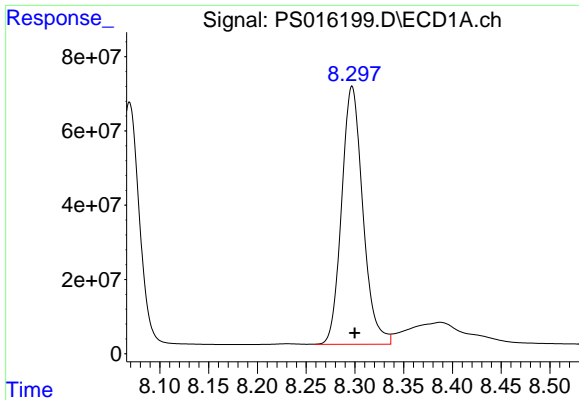
#7 MCPA
 R.T.: 7.238 min
 Delta R.T.: -0.002 min
 Response: 186443118
 Conc: 70.73 ug/ml



#8 DICHLORPROP
 R.T.: 8.069 min
 Delta R.T.: -0.003 min
 Response: 927409161
 Conc: 666.72 ng/ml



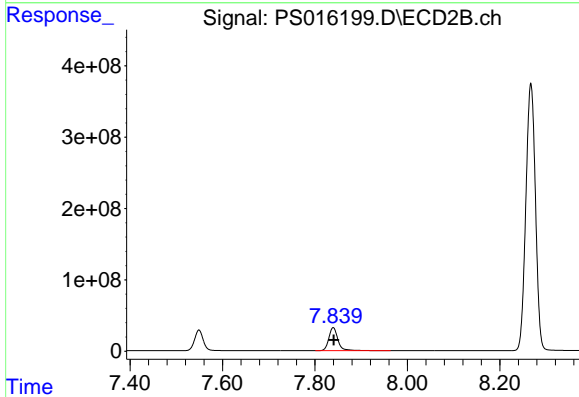
#8 DICHLORPROP
 R.T.: 7.549 min
 Delta R.T.: -0.001 min
 Response: 372295032
 Conc: 707.00 ng/ml



#9 2,4-D

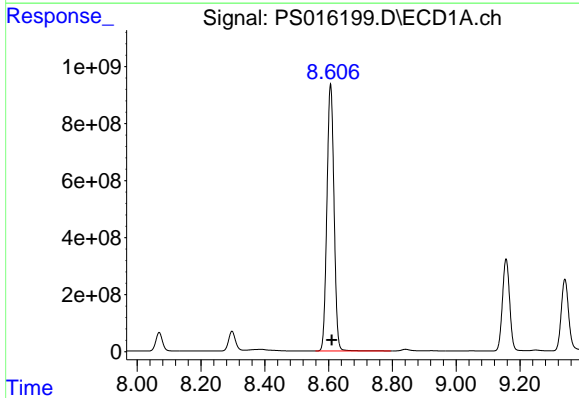
R.T.: 8.297 min
 Delta R.T.: -0.003 min
 Response: 1053449942
 Conc: 657.15 ng/ml

Instrument :
 ECD_S
 ClientSampleId :



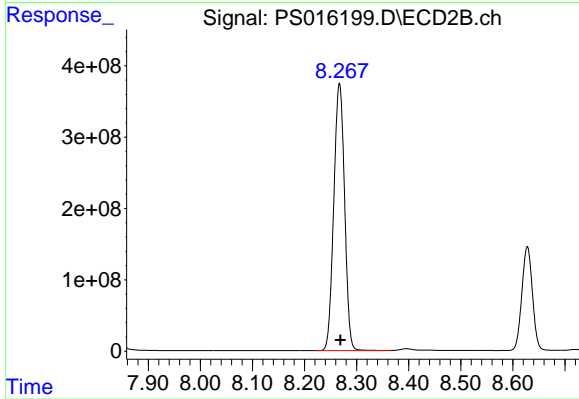
#9 2,4-D

R.T.: 7.840 min
 Delta R.T.: -0.001 min
 Response: 439578491
 Conc: 697.06 ng/ml



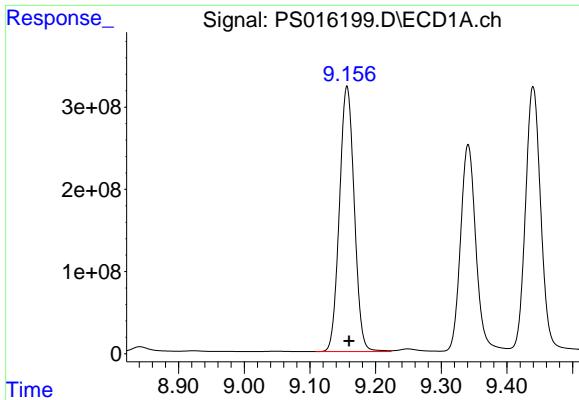
#10 Pentachlorophenol

R.T.: 8.606 min
 Delta R.T.: -0.004 min
 Response: 14462814666
 Conc: 729.82 ng/ml



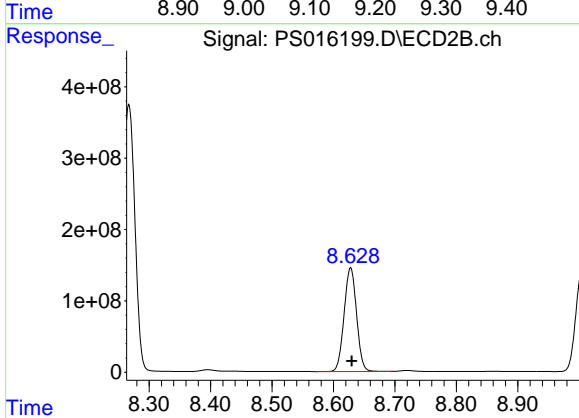
#10 Pentachlorophenol

R.T.: 8.267 min
 Delta R.T.: -0.002 min
 Response: 5395845197
 Conc: 750.12 ng/ml

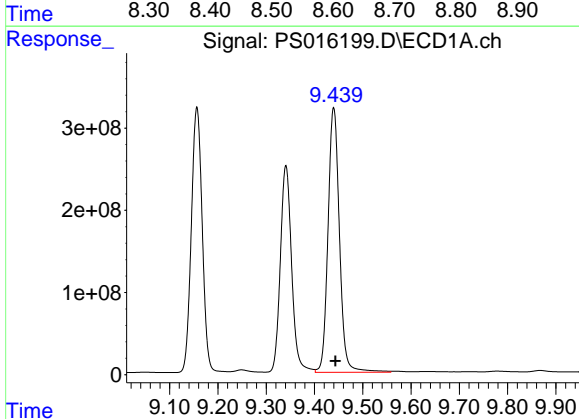


#11 2,4,5-TP (SILVEX)
 R.T.: 9.156 min
 Delta R.T.: -0.003 min
 Response: 5057916276
 Conc: 681.63 ng/ml

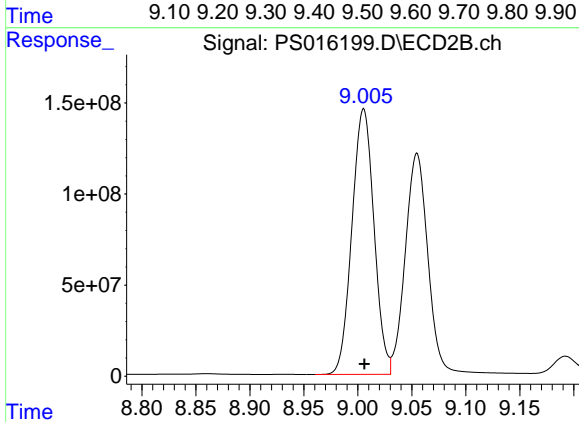
Instrument :
 ECD_S
 ClientSampled :



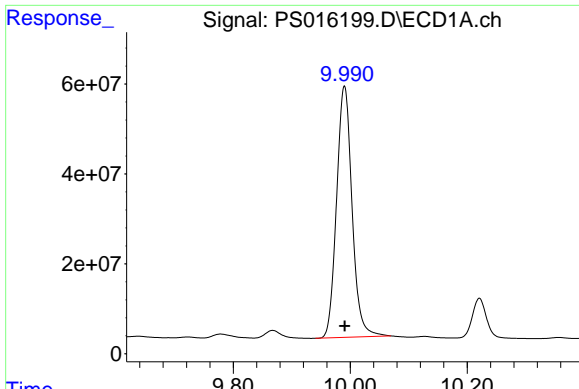
#11 2,4,5-TP (SILVEX)
 R.T.: 8.628 min
 Delta R.T.: -0.002 min
 Response: 2054170163
 Conc: 728.02 ng/ml



#12 2,4,5-T
 R.T.: 9.440 min
 Delta R.T.: -0.004 min
 Response: 5304028069
 Conc: 679.25 ng/ml



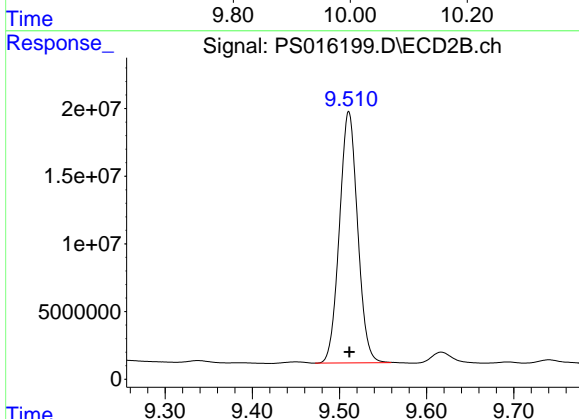
#12 2,4,5-T
 R.T.: 9.005 min
 Delta R.T.: 0.000 min
 Response: 2072006379
 Conc: 718.27 ng/ml



#13 2,4-DB

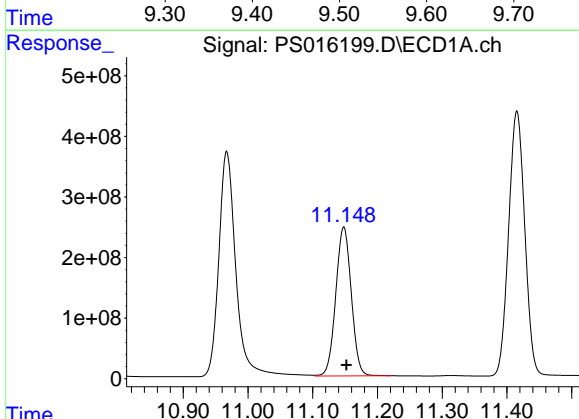
R.T.: 9.990 min
 Delta R.T.: 0.000 min
 Response: 1029063892
 Conc: 619.51 ng/ml

Instrument :
 ECD_S
 ClientSampleId :



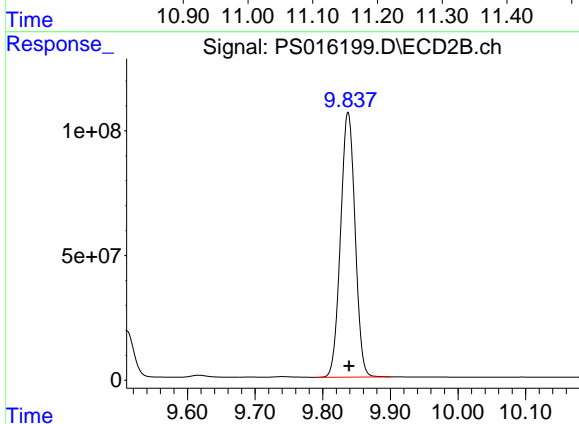
#13 2,4-DB

R.T.: 9.511 min
 Delta R.T.: 0.000 min
 Response: 269024377
 Conc: 715.61 ng/ml



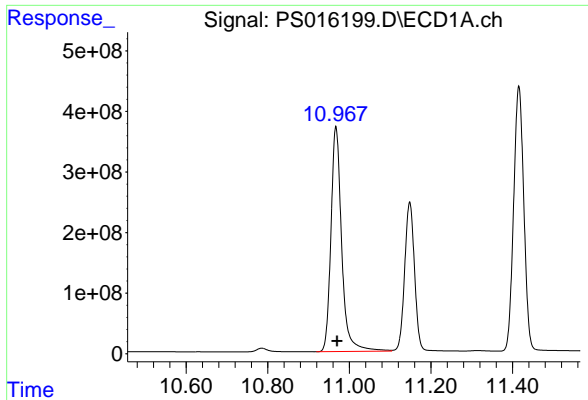
#14 DINOSEB

R.T.: 11.148 min
 Delta R.T.: -0.004 min
 Response: 4093772552
 Conc: 746.73 ng/ml



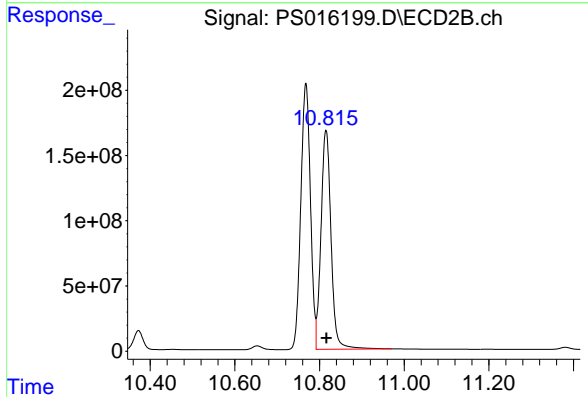
#14 DINOSEB

R.T.: 9.837 min
 Delta R.T.: -0.001 min
 Response: 1583719415
 Conc: 775.64 ng/ml

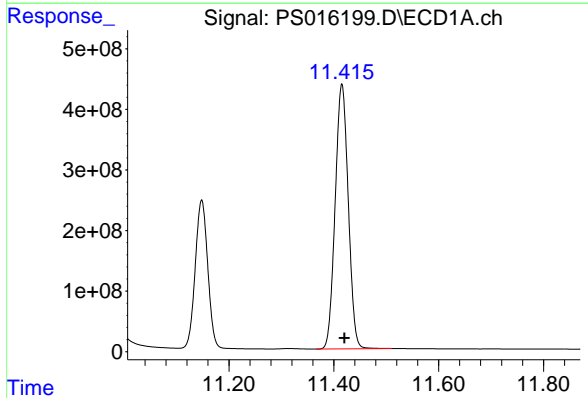


#15 Picloram
 R.T.: 10.967 min
 Delta R.T.: -0.003 min
 Response: 6795842522
 Conc: 617.79 ng/ml

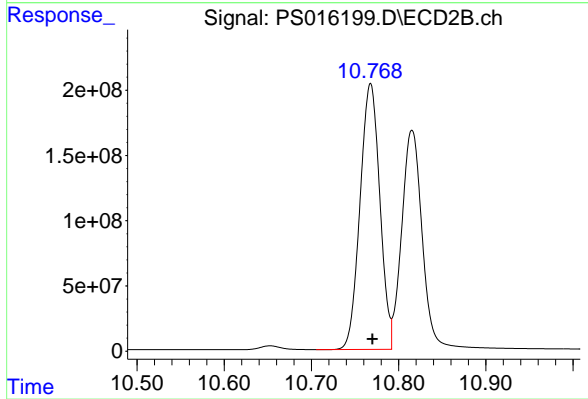
Instrument :
 ECD_S
 ClientSampled :



#15 Picloram
 R.T.: 10.815 min
 Delta R.T.: 0.000 min
 Response: 2763476614
 Conc: 664.20 ng/ml



#16 DCPA
 R.T.: 11.415 min
 Delta R.T.: -0.004 min
 Response: 7562625301
 Conc: 701.10 ng/ml



#16 DCPA
 R.T.: 10.768 min
 Delta R.T.: -0.002 min
 Response: 3213281155
 Conc: 747.20 ng/ml