

Data Path : Z:\pestpcbsrv\HPCHEM1\ECD_S\Data\PS072820\
 Data File : PS011438.D
 Signal(s) : Signal #1: ECD1A.ch Signal #2: ECD2B.ch
 Acq On : 28 Jul 2020 14:49
 Operator : DD\AJ
 Sample : L3383-09
 Misc :
 ALS Vial : 25 Sample Multiplier: 1

Instrument :
 ECD_S
 ClientSampleId :
 CRT-009

Integration File signal 1: autoint1.e
 Integration File signal 2: autoint2.e
 Quant Time: Jul 28 15:11:27 2020
 Quant Method : Z:\pestpcbsrv\HPCHEM1\ECD_S\Method\PS071320.M
 Quant Title : 8080.M
 QLast Update : Mon Jul 13 16:10:29 2020
 Response via : Initial Calibration
 Integrator: ChemStation

Volume Inj. : 2 µl
 Signal #1 Phase : Rtx-CLPesticides Signal #2 Phase: Rtx-CLPesticides2
 Signal #1 Info : 30M x 0.32mm x0.5 Signal #2 Info : 30M x 0.32mm x 0.25µm

	Compound	RT#1	RT#2	Resp#1	Resp#2	ng/ml	ng/ml

System Monitoring Compounds							
4) S	2,4-DCAA	7.227	6.919	178.4E6	107.6E6	183.878	191.151
Target Compounds							
1) T	Dalapon	2.989	2.581	37466261	89092467	31.134	116.055 #
2) T	3,5-DICHL...	0.000	6.099	0	46075018	N.D.	54.861
3) T	4-Nitroph...	0.000	6.552	0	5628480	N.D.	17.166
5) T	DICAMBA	0.000	7.052	0	5322556	N.D.	2.324
6) T	MCPP	7.580	7.225	7217040	2900233	2.383	1.520 #
7) T	MCPA	7.774	7.382	26076364	27340198	6.114	9.485 #
8) T	DICHLORPROP	0.000	7.736	0	9543159	N.D.	15.854
9) T	2,4-D	0.000	7.986	0	13277702	N.D.	17.712
10) T	Pentachlo...	8.709	8.435	17609376	-965160	1.332	N.D. #
11) T	2,4,5-TP ...	0.000	8.768	0	20208452	N.D.	6.610
12) T	2,4,5-T	9.509	9.173	20660499	9345893	4.095	3.081
13) T	2,4-DB	9.984	9.682	22163295	7426214	34.387	17.371 #
14) T	DINOSEB	0.000	10.037	0	16538831	N.D.	7.711
15) T	Picloram	11.019	11.024	9373326	20033813	1.486	4.581 #
16) T	DCPA	11.465	10.946	14239538	11380617	2.210	3.009 #

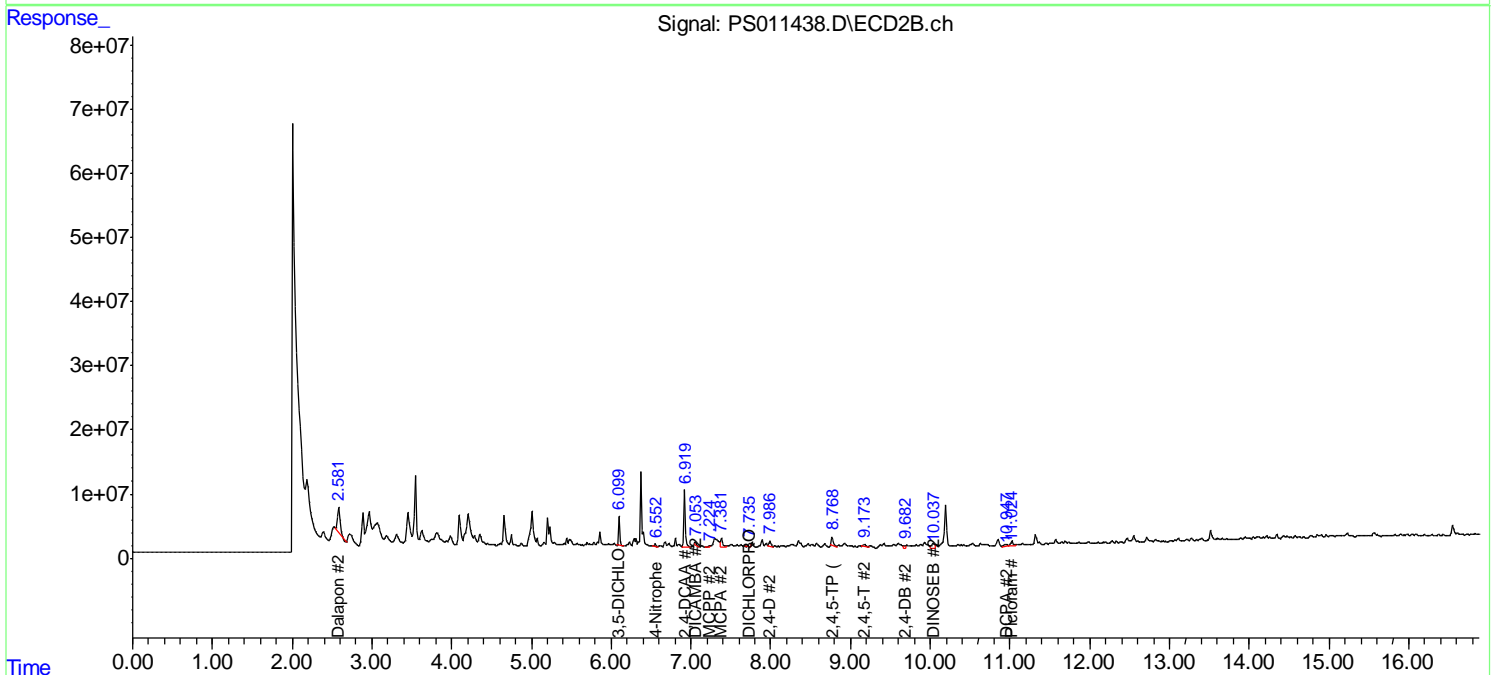
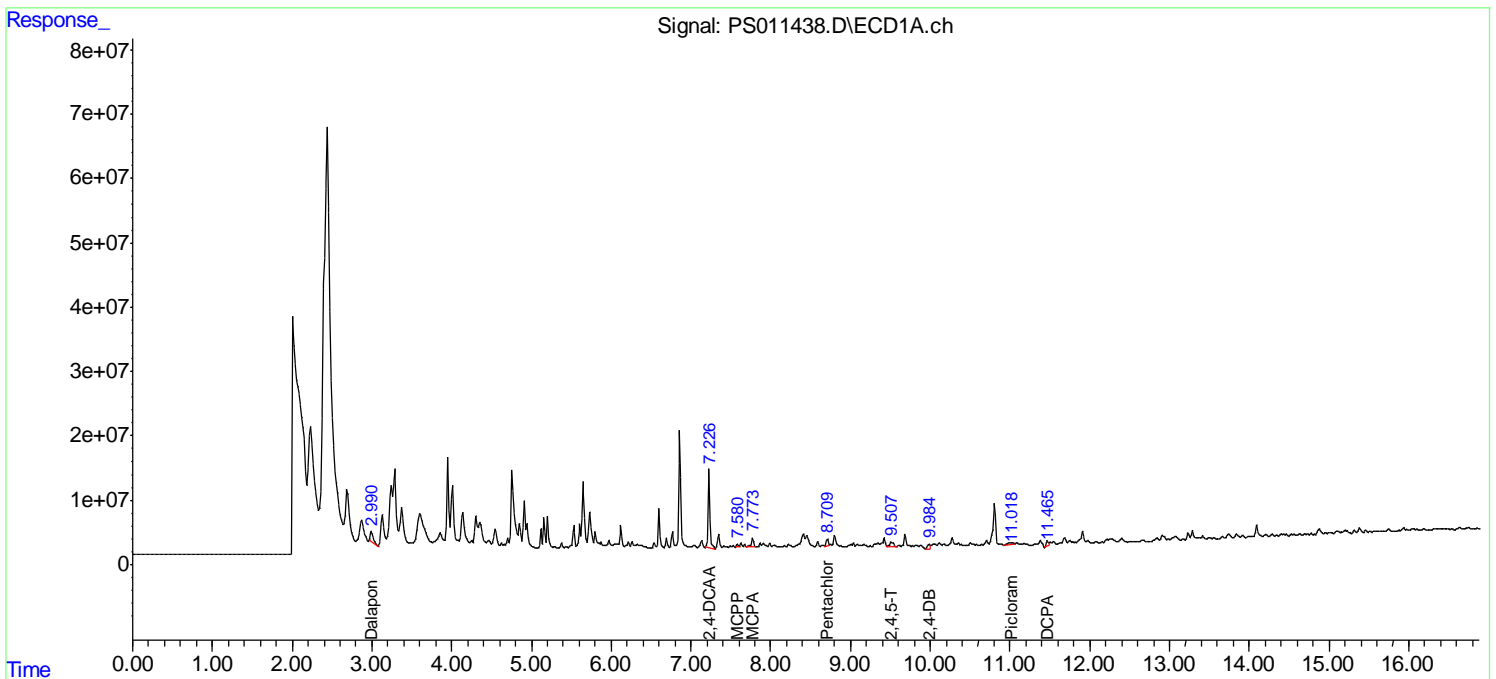
(f)=RT Delta > 1/2 Window (#)=Amounts differ by > 25% (m)=manual int.

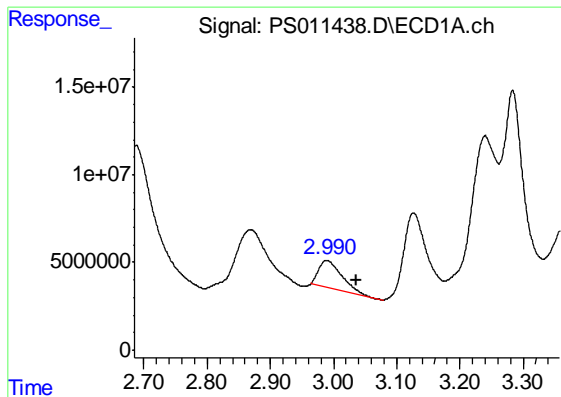
Data Path : Z:\pestpcbsrv\HPCHEM1\ECD_S\Data\PS072820\
 Data File : PS011438.D
 Signal(s) : Signal #1: ECD1A.ch Signal #2: ECD2B.ch
 Acq On : 28 Jul 2020 14:49
 Operator : DD\AJ
 Sample : L3383-09
 Misc :
 ALS Vial : 25 Sample Multiplier: 1

Instrument :
 ECD_S
 ClientSampled :
 CRT-009

Integration File signal 1: autoint1.e
 Integration File signal 2: autoint2.e
 Quant Time: Jul 28 15:11:27 2020
 Quant Method : Z:\pestpcbsrv\HPCHEM1\ECD_S\Method\PS071320.M
 Quant Title : 8080.M
 QLast Update : Mon Jul 13 16:10:29 2020
 Response via : Initial Calibration
 Integrator: ChemStation

Volume Inj. : 2 µl
 Signal #1 Phase : Rtx-CLPesticides Signal #2 Phase: Rtx-CLPesticides2
 Signal #1 Info : 30M x 0.32mm x0.5 Signal #2 Info : 30M x 0.32mm x 0.25µm

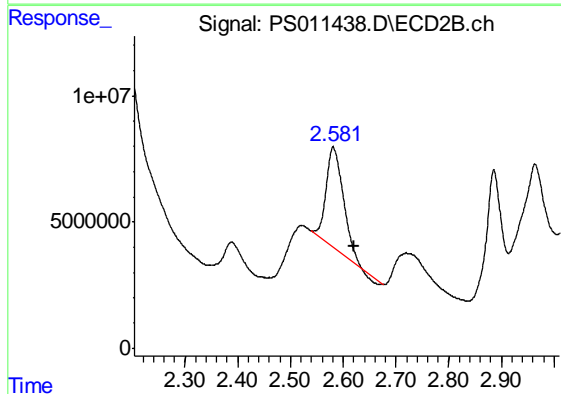




#1 Dalapon

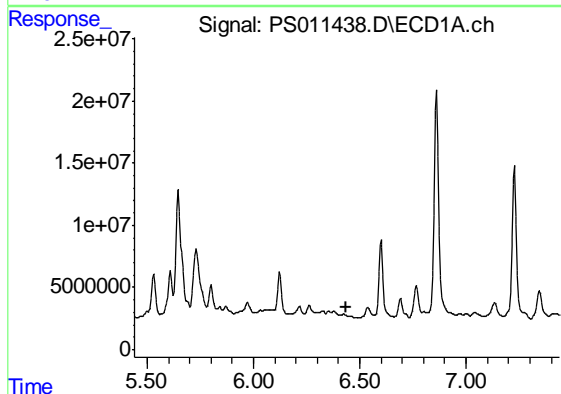
R.T.: 2.989 min
 Delta R.T.: -0.047 min
 Response: 37466261
 Conc: 31.13 ng/ml

Instrument :
 ECD_S
 ClientSampleId :
 CRT-009



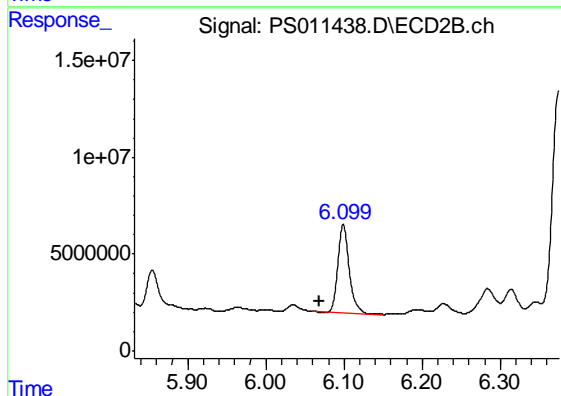
#1 Dalapon

R.T.: 2.581 min
 Delta R.T.: -0.039 min
 Response: 89092467
 Conc: 116.06 ng/ml



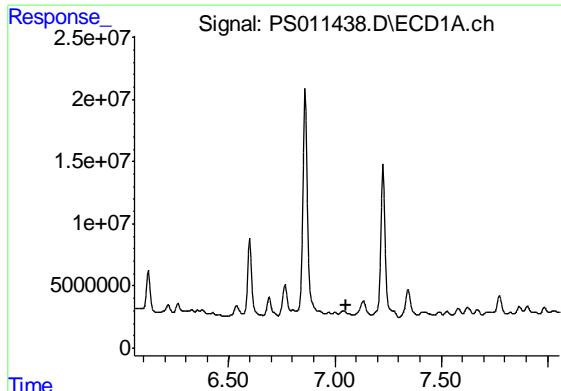
#2 3,5-DICHLOROBENZOIC ACID

R.T.: 0.000 min
 Exp R.T. : 6.439 min
 Response: 0
 Conc: N.D.



#2 3,5-DICHLOROBENZOIC ACID

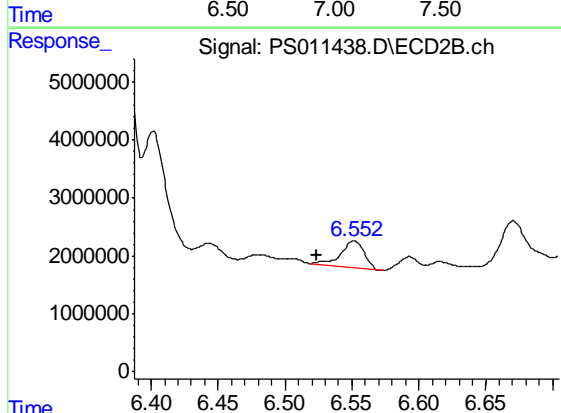
R.T.: 6.099 min
 Delta R.T.: 0.031 min
 Response: 46075018
 Conc: 54.86 ng/ml



#3 4-Nitrophenol

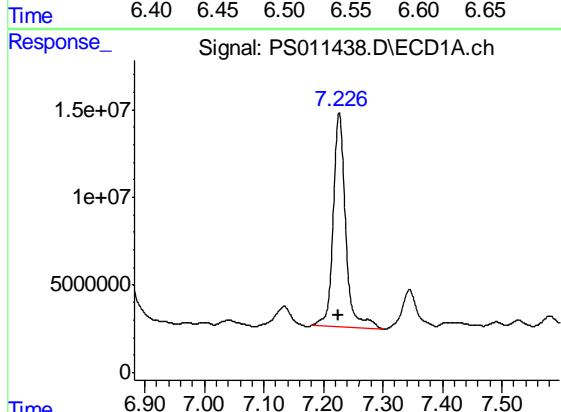
R.T.: 0.000 min
 Exp R.T. : 7.057 min
 Response: 0
 Conc: N.D.

Instrument :
 ECD_S
 ClientSampled :
 CRT-009



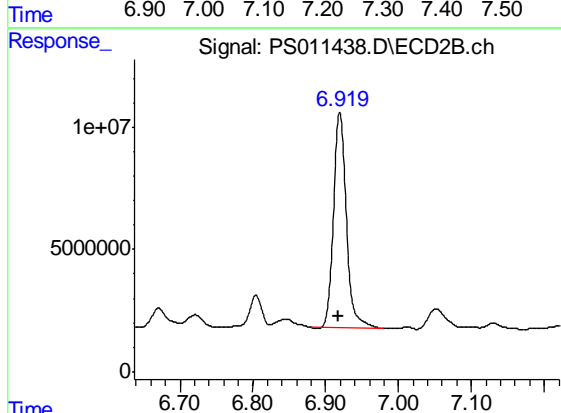
#3 4-Nitrophenol

R.T.: 6.552 min
 Delta R.T.: 0.028 min
 Response: 5628480
 Conc: 17.17 ng/ml



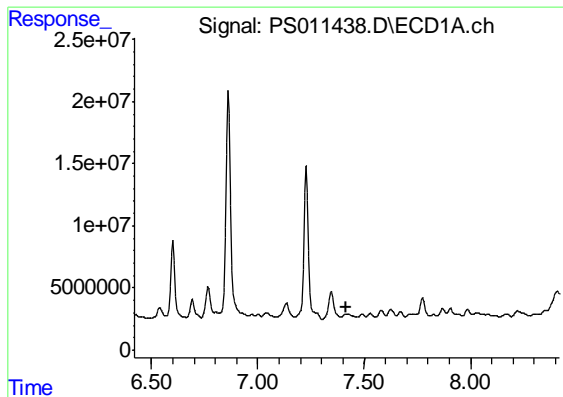
#4 2,4-DCAA

R.T.: 7.227 min
 Delta R.T.: 0.000 min
 Response: 178424087
 Conc: 183.88 ng/ml



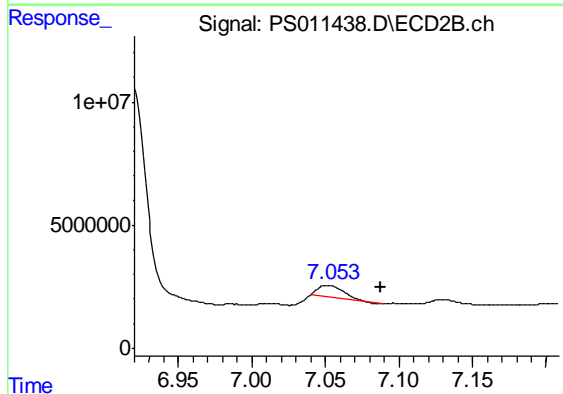
#4 2,4-DCAA

R.T.: 6.919 min
 Delta R.T.: 0.000 min
 Response: 107622236
 Conc: 191.15 ng/ml

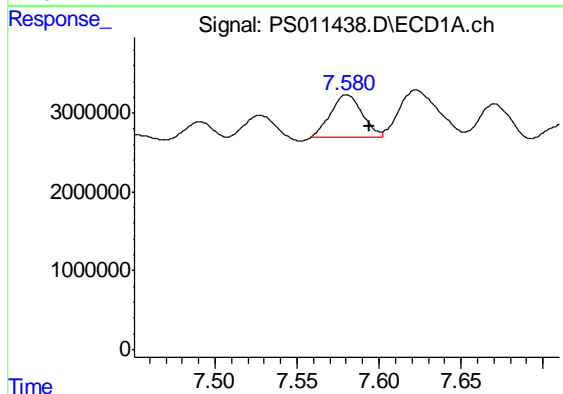


#5 DICAMBA
 R.T.: 0.000 min
 Exp R.T.: 7.419 min
 Response: 0
 Conc: N.D.

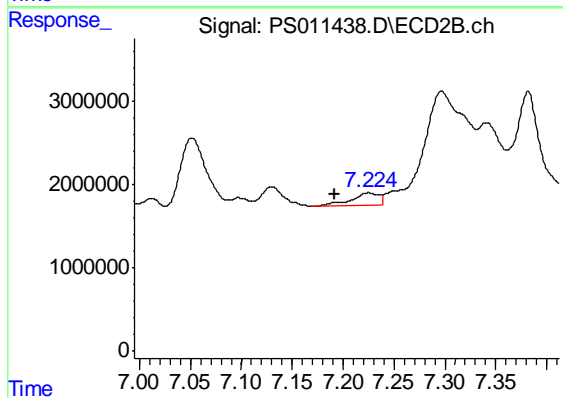
Instrument :
 ECD_S
 ClientSampled :
 CRT-009



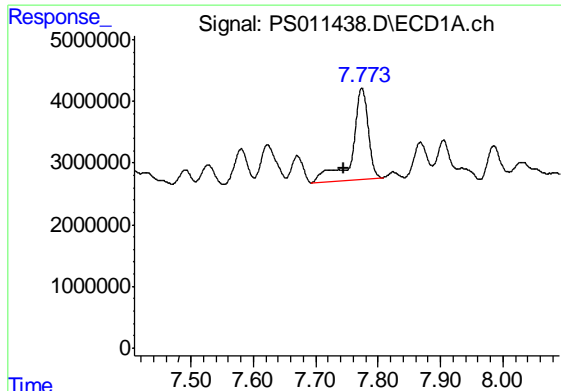
#5 DICAMBA
 R.T.: 7.052 min
 Delta R.T.: -0.036 min
 Response: 5322556
 Conc: 2.32 ng/ml



#6 MCPP
 R.T.: 7.580 min
 Delta R.T.: -0.014 min
 Response: 7217040
 Conc: 2.38 ug/ml



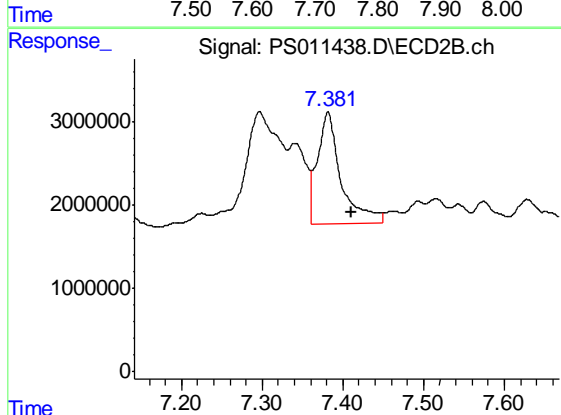
#6 MCPP
 R.T.: 7.225 min
 Delta R.T.: 0.033 min
 Response: 2900233
 Conc: 1.52 ug/ml



#7 MCPA

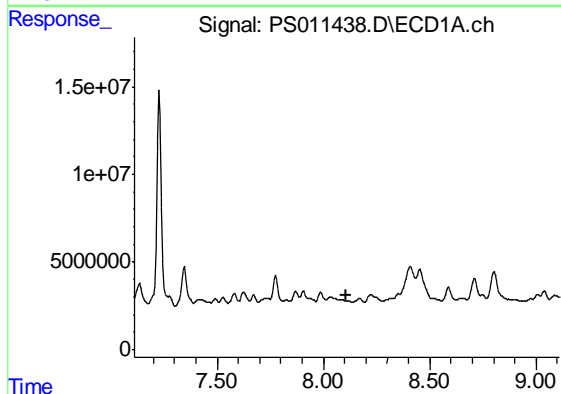
R.T.: 7.774 min
 Delta R.T.: 0.028 min
 Response: 26076364
 Conc: 6.11 ug/ml

Instrument :
 ECD_S
 ClientSampleId :
 CRT-009



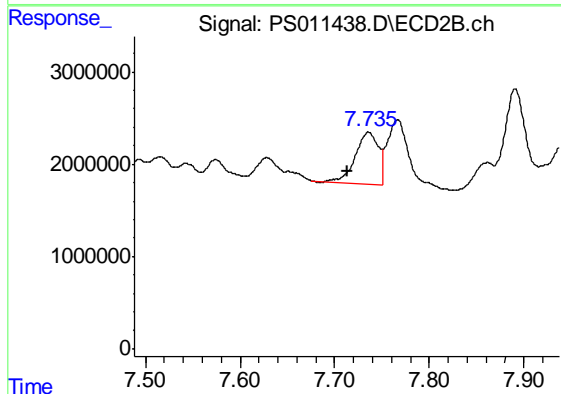
#7 MCPA

R.T.: 7.382 min
 Delta R.T.: -0.028 min
 Response: 27340198
 Conc: 9.49 ug/ml



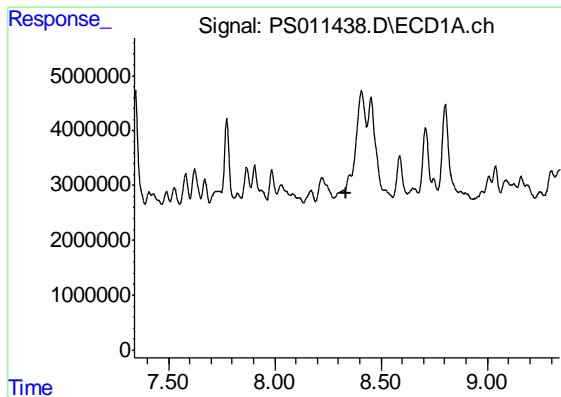
#8 DICHLORPROP

R.T.: 0.000 min
 Exp R.T. : 8.110 min
 Response: 0
 Conc: N.D.



#8 DICHLORPROP

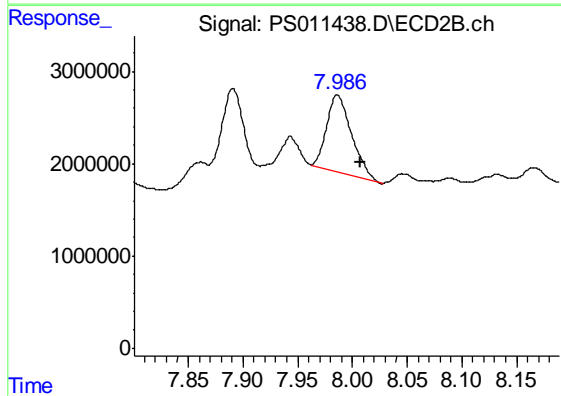
R.T.: 7.736 min
 Delta R.T.: 0.022 min
 Response: 9543159
 Conc: 15.85 ng/ml



#9 2,4-D

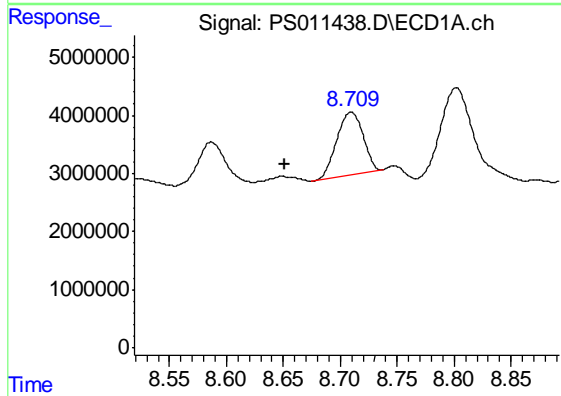
R.T.: 0.000 min
 Exp R.T.: 8.339 min
 Response: 0
 Conc: N.D.

Instrument :
 ECD_S
 ClientSampleId :
 CRT-009



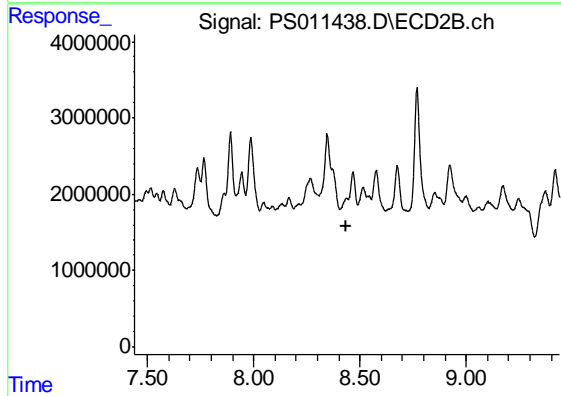
#9 2,4-D

R.T.: 7.986 min
 Delta R.T.: -0.021 min
 Response: 13277702
 Conc: 17.71 ng/ml



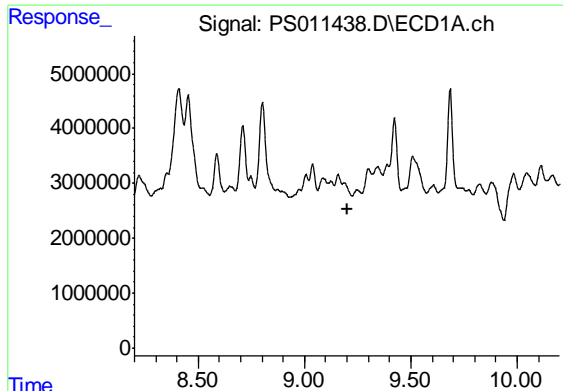
#10 Pentachlorophenol

R.T.: 8.709 min
 Delta R.T.: 0.058 min
 Response: 17609376
 Conc: 1.33 ng/ml



#10 Pentachlorophenol

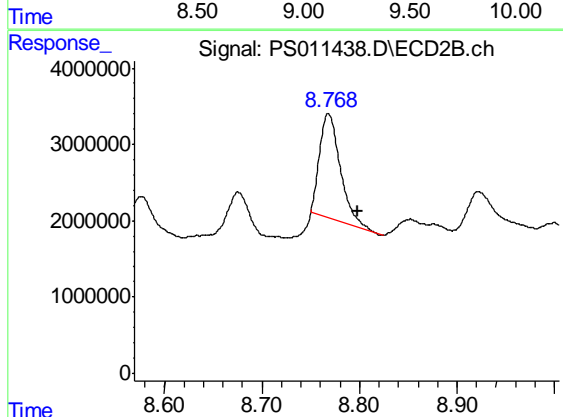
R.T.: 8.435 min
 Delta R.T.: -0.003 min
 Response: -965160
 Conc: N.D.



#11 2,4,5-TP (SILVEX)

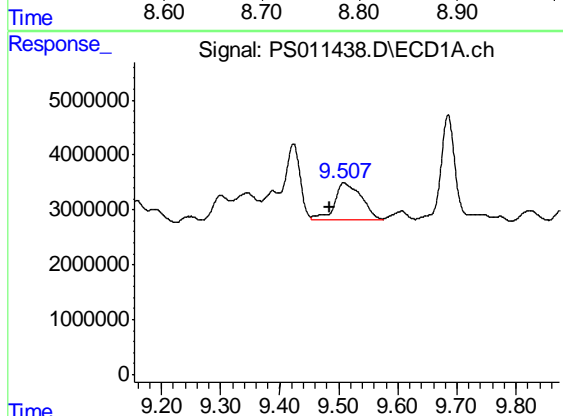
R.T.: 0.000 min
 Exp R.T.: 9.200 min
 Response: 0
 Conc: N.D.

Instrument :
 ECD_S
 ClientSampleId :
 CRT-009



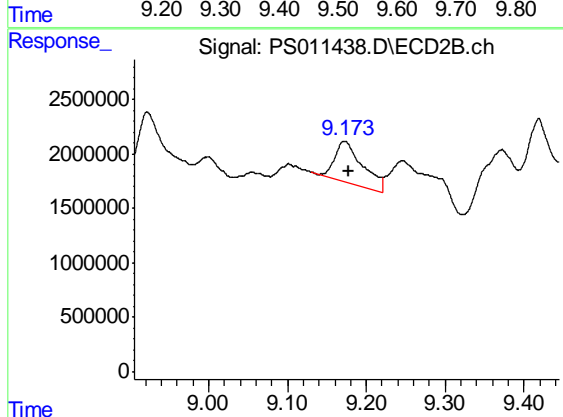
#11 2,4,5-TP (SILVEX)

R.T.: 8.768 min
 Delta R.T.: -0.030 min
 Response: 20208452
 Conc: 6.61 ng/ml



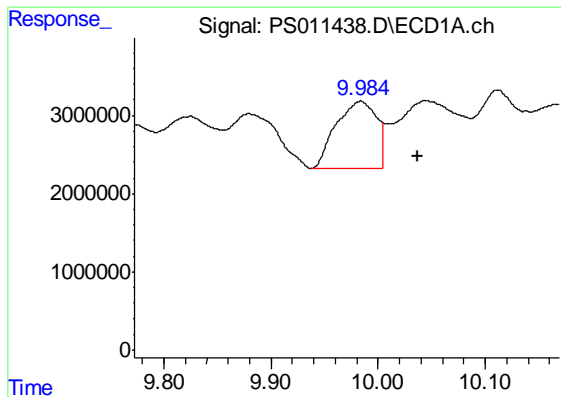
#12 2,4,5-T

R.T.: 9.509 min
 Delta R.T.: 0.024 min
 Response: 20660499
 Conc: 4.09 ng/ml



#12 2,4,5-T

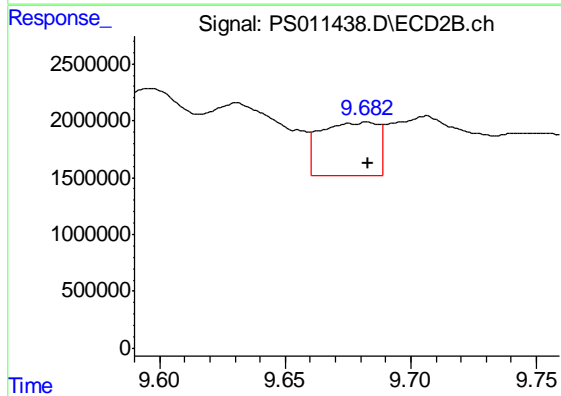
R.T.: 9.173 min
 Delta R.T.: -0.005 min
 Response: 9345893
 Conc: 3.08 ng/ml



#13 2,4-DB

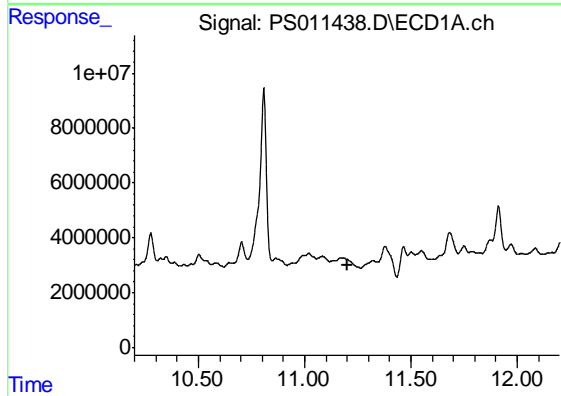
R.T.: 9.984 min
 Delta R.T.: -0.054 min
 Response: 22163295
 Conc: 34.39 ng/ml

Instrument :
 ECD_S
 ClientSampled :
 CRT-009



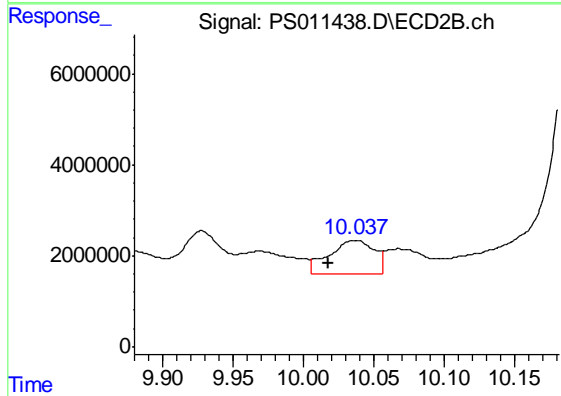
#13 2,4-DB

R.T.: 9.682 min
 Delta R.T.: 0.000 min
 Response: 7426214
 Conc: 17.37 ng/ml



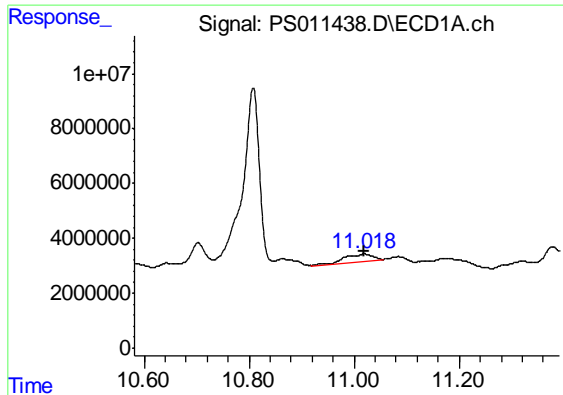
#14 DINOSEB

R.T.: 0.000 min
 Exp R.T. : 11.199 min
 Response: 0
 Conc: N.D.



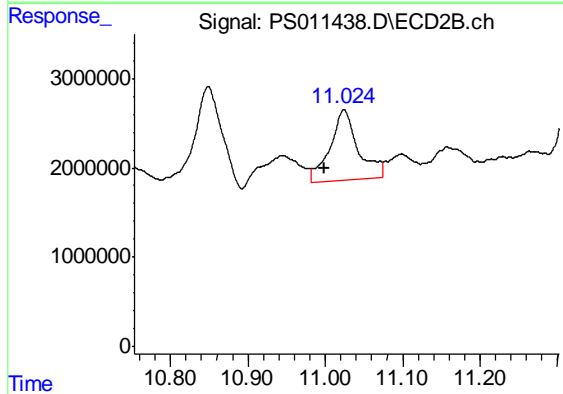
#14 DINOSEB

R.T.: 10.037 min
 Delta R.T.: 0.020 min
 Response: 16538831
 Conc: 7.71 ng/ml

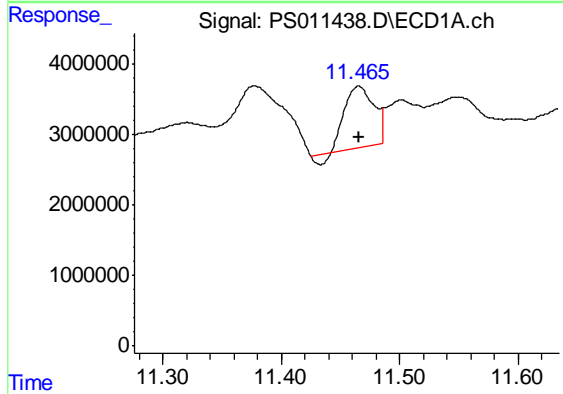


#15 Picloram
 R.T.: 11.019 min
 Delta R.T.: 0.000 min
 Response: 9373326
 Conc: 1.49 ng/ml

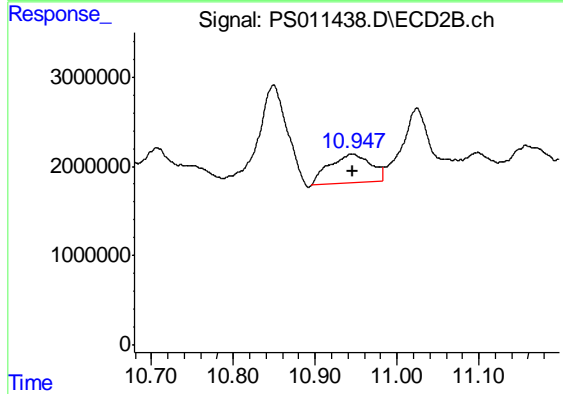
Instrument :
 ECD_S
 ClientSampleId :
 CRT-009



#15 Picloram
 R.T.: 11.024 min
 Delta R.T.: 0.025 min
 Response: 20033813
 Conc: 4.58 ng/ml



#16 DCPA
 R.T.: 11.465 min
 Delta R.T.: 0.000 min
 Response: 14239538
 Conc: 2.21 ng/ml



#16 DCPA
 R.T.: 10.946 min
 Delta R.T.: 0.000 min
 Response: 11380617
 Conc: 3.01 ng/ml