

Data Path : Z:\pestpcbsrv\HPCHEM1\ECD_S\Data\PS072820\
 Data File : PS011449.D
 Signal(s) : Signal #1: ECD1A.ch Signal #2: ECD2B.ch
 Acq On : 28 Jul 2020 19:03
 Operator : DD\AJ
 Sample : L3383-05
 Misc :
 ALS Vial : 24 Sample Multiplier: 1

Instrument :
 ECD_S
 ClientSampleId :
 CRT-018

Integration File signal 1: autoint1.e
 Integration File signal 2: autoint2.e
 Quant Time: Jul 28 20:57:28 2020
 Quant Method : Z:\pestpcbsrv\HPCHEM1\ECD_S\Method\PS071320.M
 Quant Title : 8080.M
 QLast Update : Mon Jul 13 16:10:29 2020
 Response via : Initial Calibration
 Integrator: ChemStation

Volume Inj. : 2 µl
 Signal #1 Phase : Rtx-CLPesticides Signal #2 Phase: Rtx-CLPesticides2
 Signal #1 Info : 30M x 0.32mm x0.5 Signal #2 Info : 30M x 0.32mm x 0.25µm

Compound	RT#1	RT#2	Resp#1	Resp#2	ng/ml	ng/ml

System Monitoring Compounds						
4) S 2,4-DCAA	7.225	6.918	224.1E6	137.6E6	230.993	244.317
Target Compounds						
1) T Dalapon	2.991	2.583	43009148	131.1E6	35.741	170.781 #
2) T 3,5-DICHL...	0.000	6.098	0	41081420	N.D.	48.916
3) T 4-Nitroph...	0.000	6.551	0	5224920	N.D.	15.936
5) T DICAMBA	0.000	7.128	0	2621309	N.D.	1.145
6) T MCPP	0.000	7.220	0	2587504	N.D.	1.356
7) T MCPA	7.772	7.380	22041692	27446376	5.168	9.522 #
8) T DICHLORPROP	0.000	7.737	0	9807322	N.D.	16.293
9) T 2,4-D	8.346	7.982	8813072	4477736	9.266	5.973 #
10) T Pentachlo...	8.649	8.435	13718422	13297604	1.038	1.908 #
11) T 2,4,5-TP ...	0.000	8.766	0	22127485	N.D.	7.238
12) T 2,4,5-T	9.496	9.177	24373045	13543789	4.830	4.465
13) T 2,4-DB	10.041	9.679	9631655	14087726	14.944	32.954 #
14) T DINOSEB	11.195	10.033	28119611	14197553	7.295	6.619
15) T Picloram	11.024	11.003	196.9E6	162.7E6	31.199	37.193
16) T DCPA	11.463	10.944	22808605	17106031	3.540	4.523 #

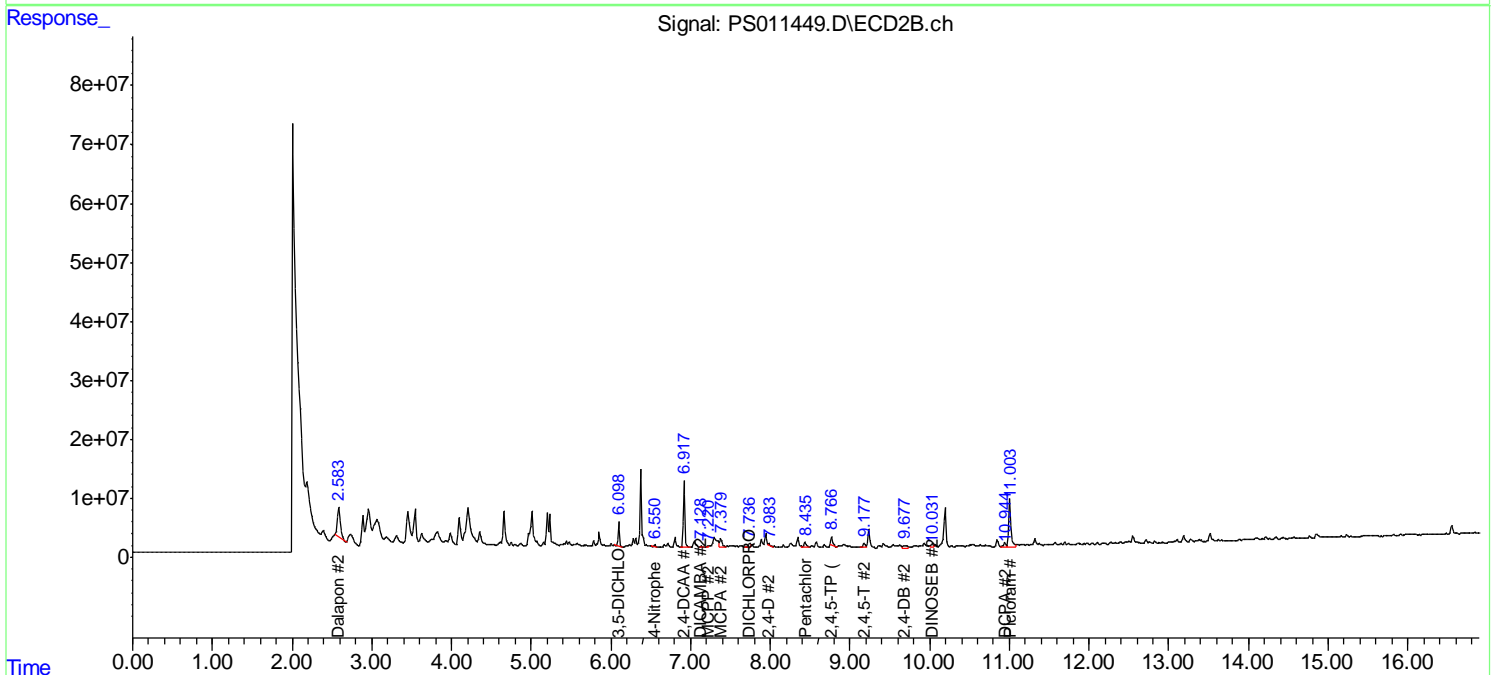
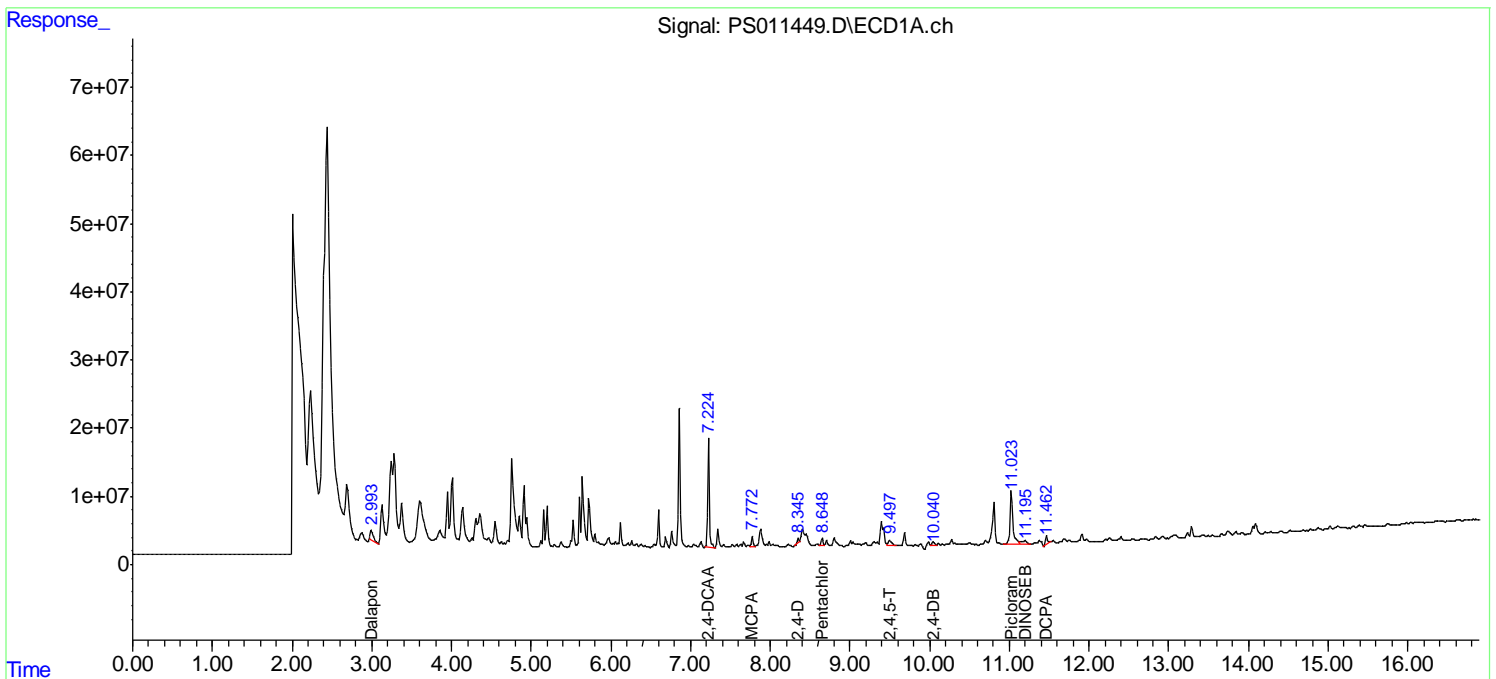
(f)=RT Delta > 1/2 Window (#)=Amounts differ by > 25% (m)=manual int.

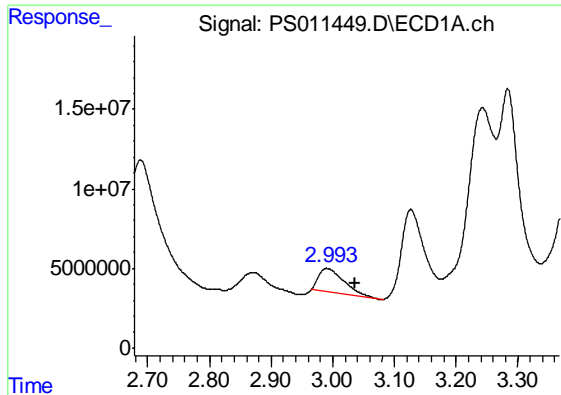
Data Path : Z:\pestpcbsrv\HPCHEM1\ECD_S\Data\PS072820\
 Data File : PS011449.D
 Signal(s) : Signal #1: ECD1A.ch Signal #2: ECD2B.ch
 Acq On : 28 Jul 2020 19:03
 Operator : DD\AJ
 Sample : L3383-05
 Misc :
 ALS Vial : 24 Sample Multiplier: 1

Instrument :
 ECD_S
 ClientSampled :
 CRT-018

Integration File signal 1: autoint1.e
 Integration File signal 2: autoint2.e
 Quant Time: Jul 28 20:57:28 2020
 Quant Method : Z:\pestpcbsrv\HPCHEM1\ECD_S\Method\PS071320.M
 Quant Title : 8080.M
 QLast Update : Mon Jul 13 16:10:29 2020
 Response via : Initial Calibration
 Integrator: ChemStation

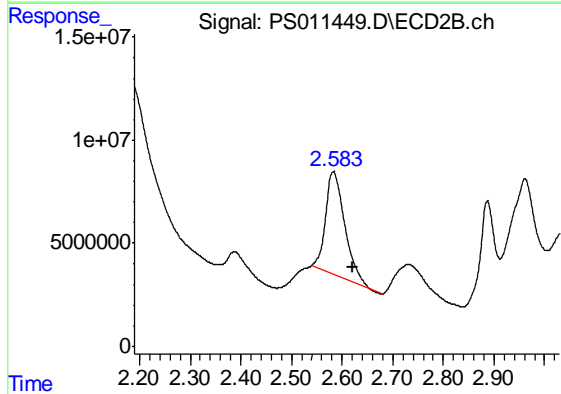
Volume Inj. : 2 µl
 Signal #1 Phase : Rtx-CLPesticides Signal #2 Phase: Rtx-CLPesticides2
 Signal #1 Info : 30M x 0.32mm x0.5 Signal #2 Info : 30M x 0.32mm x 0.25µm



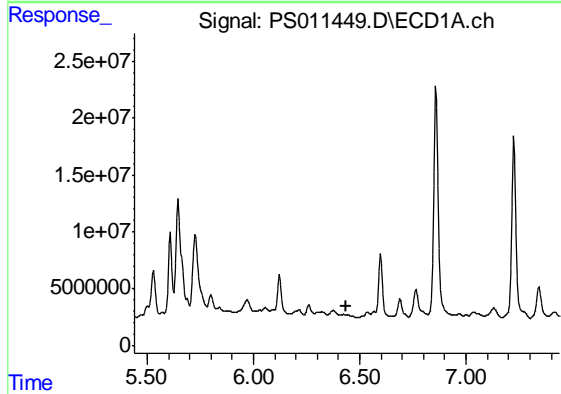


#1 Dalapon
 R.T.: 2.991 min
 Delta R.T.: -0.045 min
 Response: 43009148
 Conc: 35.74 ng/ml

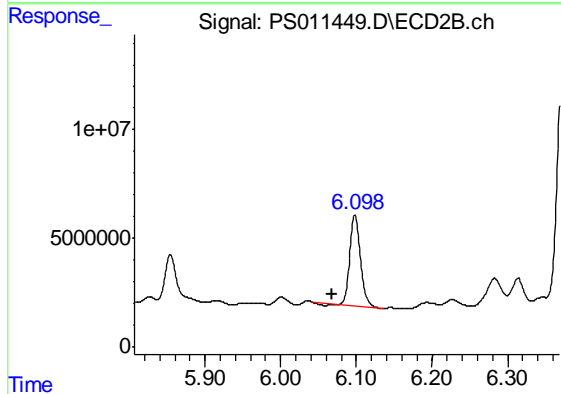
Instrument :
 ECD_S
 ClientSampleId :
 CRT-018



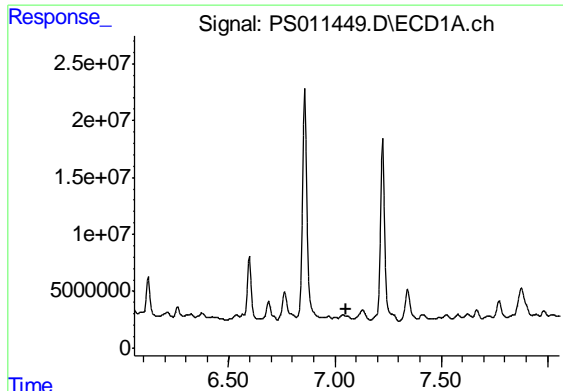
#1 Dalapon
 R.T.: 2.583 min
 Delta R.T.: -0.037 min
 Response: 131103732
 Conc: 170.78 ng/ml



#2 3,5-DICHLOROBENZOIC ACID
 R.T.: 0.000 min
 Exp R.T. : 6.439 min
 Response: 0
 Conc: N.D.

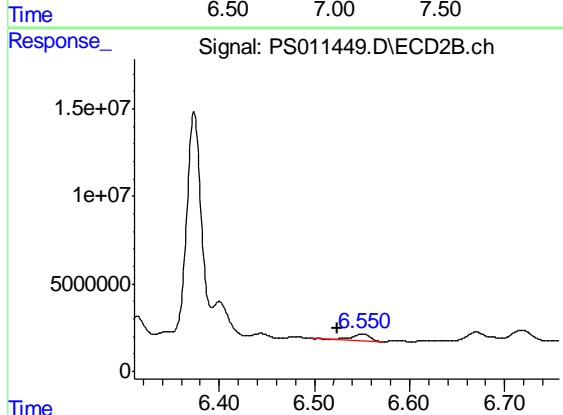


#2 3,5-DICHLOROBENZOIC ACID
 R.T.: 6.098 min
 Delta R.T.: 0.030 min
 Response: 41081420
 Conc: 48.92 ng/ml

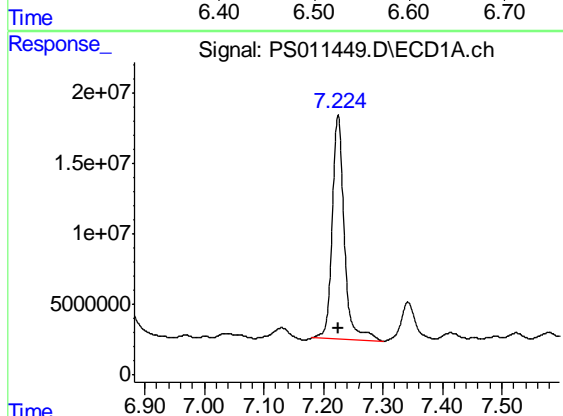


#3 4-Nitrophenol
 R.T.: 0.000 min
 Exp R.T. : 7.057 min
 Response: 0
 Conc: N.D.

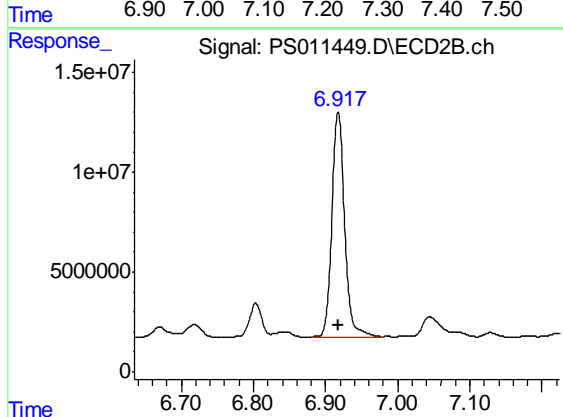
Instrument :
 ECD_S
 ClientSampled :
 CRT-018



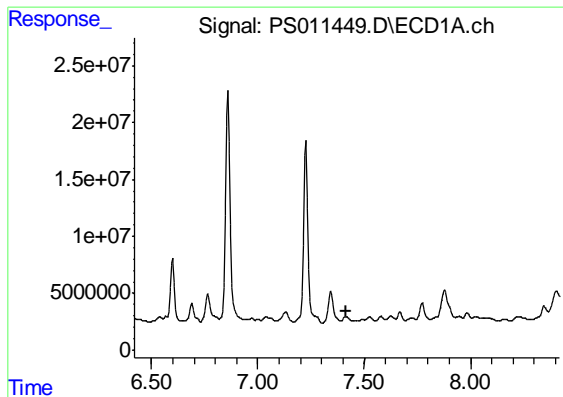
#3 4-Nitrophenol
 R.T.: 6.551 min
 Delta R.T.: 0.027 min
 Response: 5224920
 Conc: 15.94 ng/ml



#4 2,4-DCAA
 R.T.: 7.225 min
 Delta R.T.: -0.002 min
 Response: 224140988
 Conc: 230.99 ng/ml

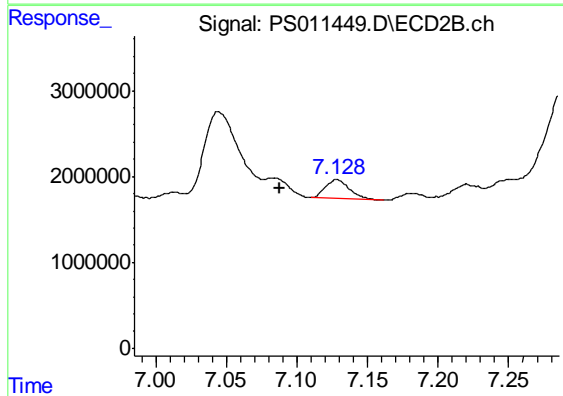


#4 2,4-DCAA
 R.T.: 6.918 min
 Delta R.T.: 0.000 min
 Response: 137555719
 Conc: 244.32 ng/ml

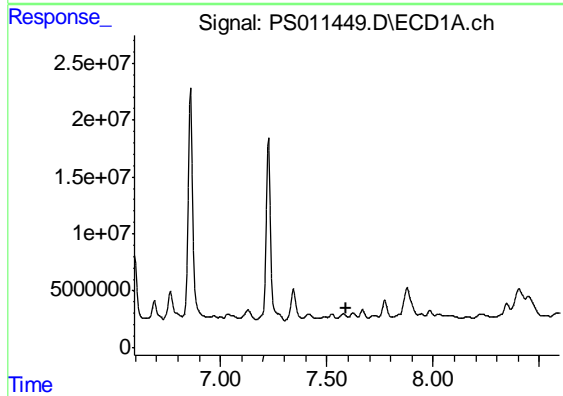


#5 DICAMBA
 R.T.: 0.000 min
 Exp R.T.: 7.419 min
 Response: 0
 Conc: N.D.

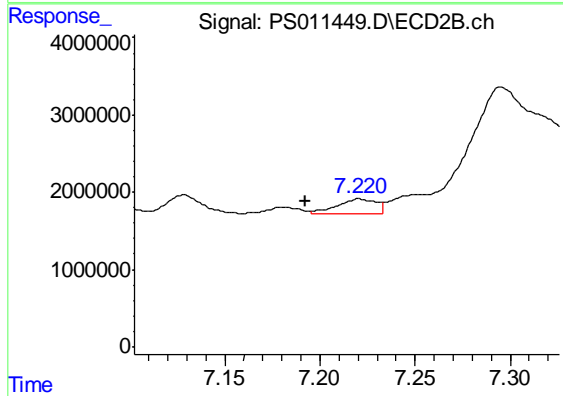
Instrument :
 ECD_S
 ClientSampleId :
 CRT-018



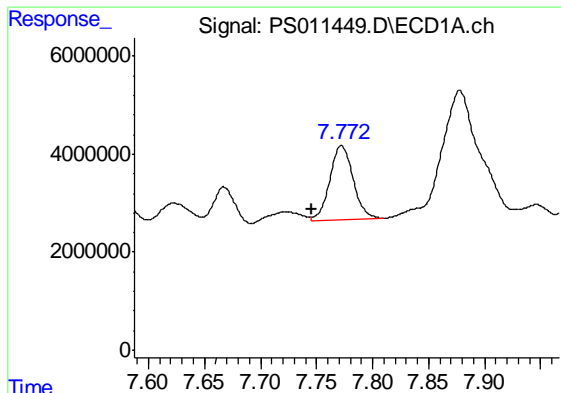
#5 DICAMBA
 R.T.: 7.128 min
 Delta R.T.: 0.040 min
 Response: 2621309
 Conc: 1.14 ng/ml



#6 MCPP
 R.T.: 0.000 min
 Exp R.T.: 7.594 min
 Response: 0
 Conc: N.D.

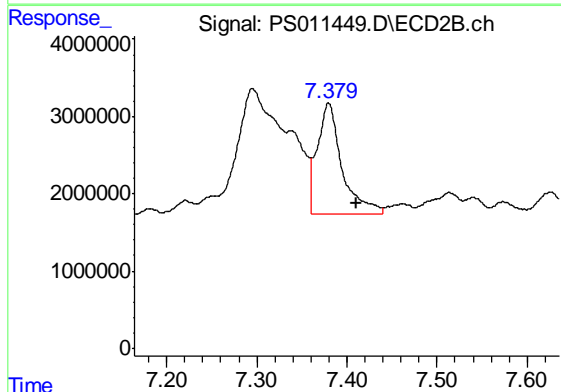


#6 MCPP
 R.T.: 7.220 min
 Delta R.T.: 0.028 min
 Response: 2587504
 Conc: 1.36 ug/ml

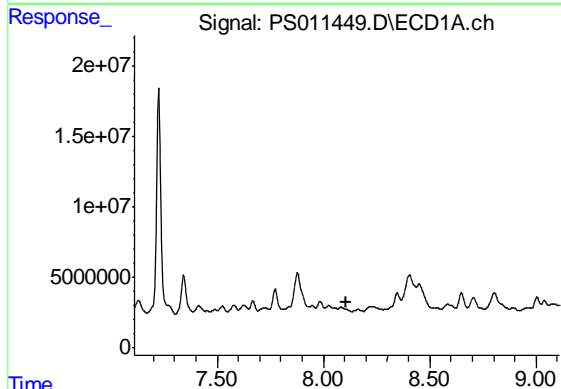


#7 MCPA
 R.T.: 7.772 min
 Delta R.T.: 0.027 min
 Response: 22041692
 Conc: 5.17 ug/ml

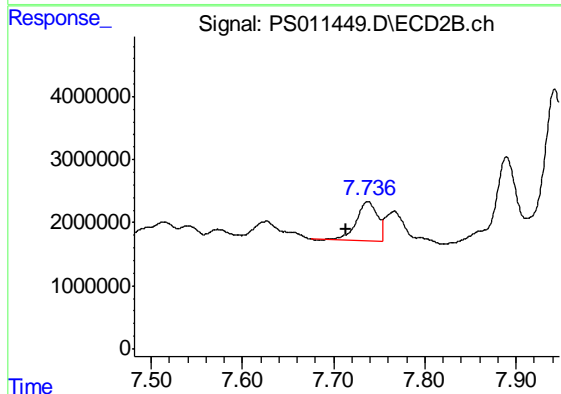
Instrument :
 ECD_S
 ClientSampled :
 CRT-018



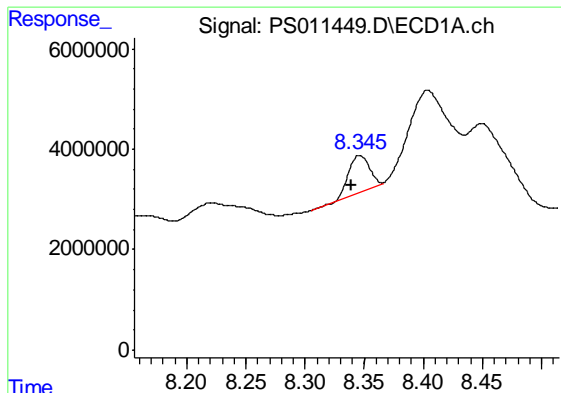
#7 MCPA
 R.T.: 7.380 min
 Delta R.T.: -0.030 min
 Response: 27446376
 Conc: 9.52 ug/ml



#8 DICHLORPROP
 R.T.: 0.000 min
 Exp R.T. : 8.110 min
 Response: 0
 Conc: N.D.



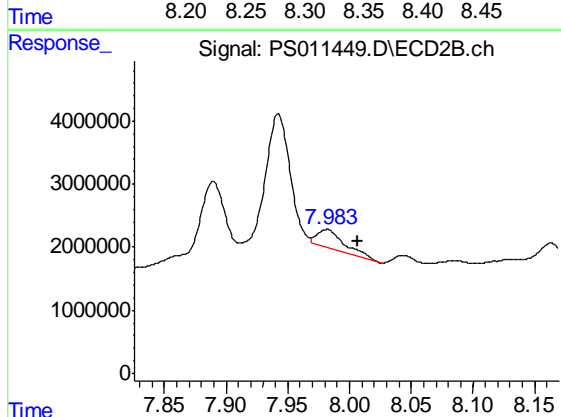
#8 DICHLORPROP
 R.T.: 7.737 min
 Delta R.T.: 0.024 min
 Response: 9807322
 Conc: 16.29 ng/ml



#9 2,4-D

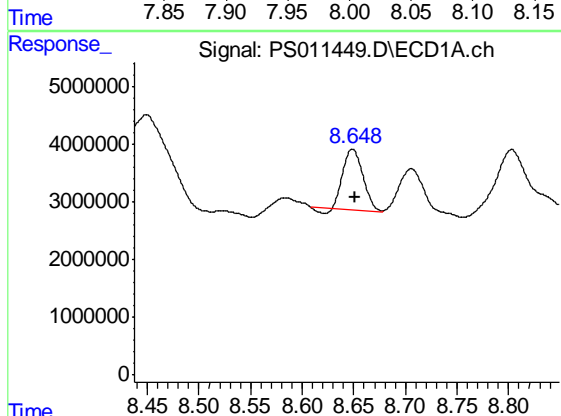
R.T.: 8.346 min
 Delta R.T.: 0.007 min
 Response: 8813072
 Conc: 9.27 ng/ml

Instrument :
 ECD_S
 ClientSampleId :
 CRT-018



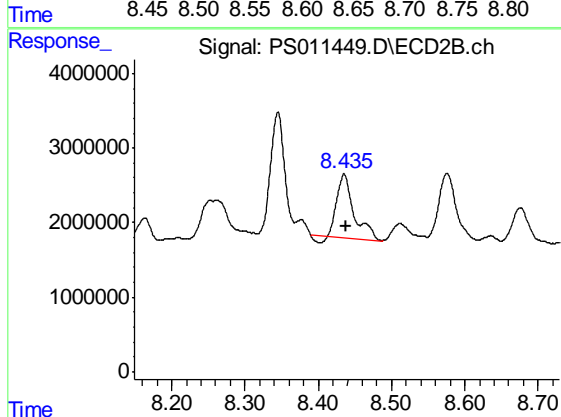
#9 2,4-D

R.T.: 7.982 min
 Delta R.T.: -0.025 min
 Response: 4477736
 Conc: 5.97 ng/ml



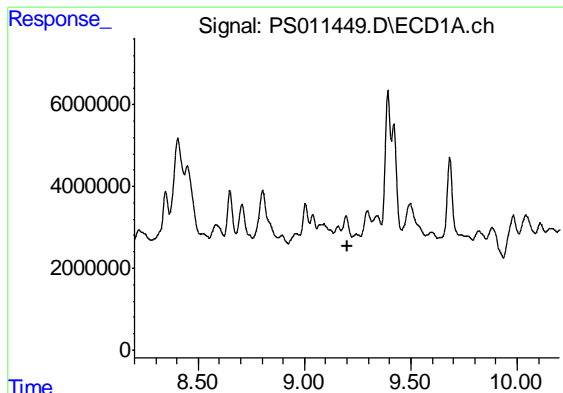
#10 Pentachlorophenol

R.T.: 8.649 min
 Delta R.T.: -0.003 min
 Response: 13718422
 Conc: 1.04 ng/ml



#10 Pentachlorophenol

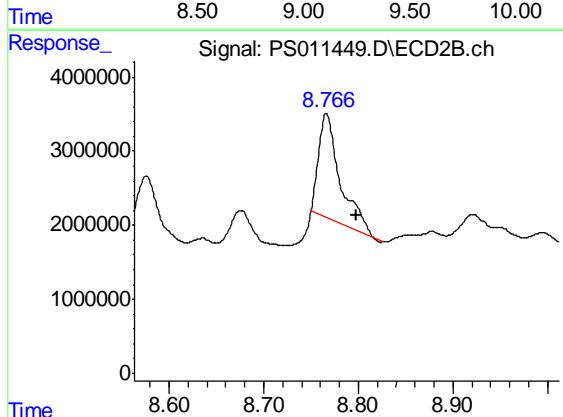
R.T.: 8.435 min
 Delta R.T.: -0.003 min
 Response: 13297604
 Conc: 1.91 ng/ml



#11 2,4,5-TP (SILVEX)

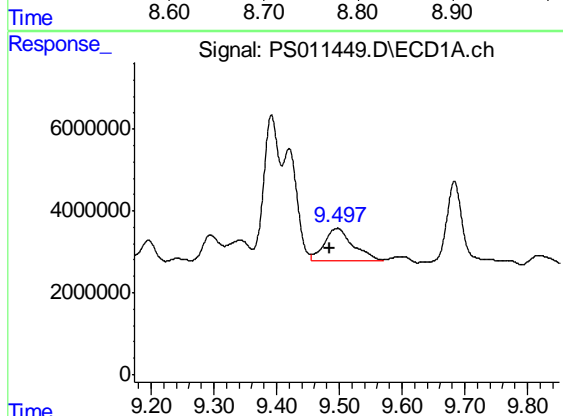
R.T.: 0.000 min
 Exp R.T. : 9.200 min
 Response: 0
 Conc: N.D.

Instrument :
 ECD_S
 ClientSampled :
 CRT-018



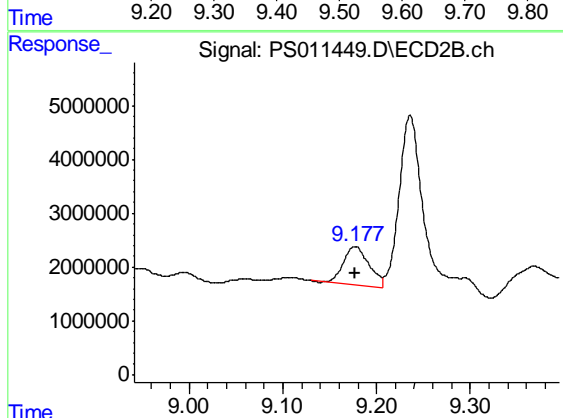
#11 2,4,5-TP (SILVEX)

R.T.: 8.766 min
 Delta R.T.: -0.032 min
 Response: 22127485
 Conc: 7.24 ng/ml



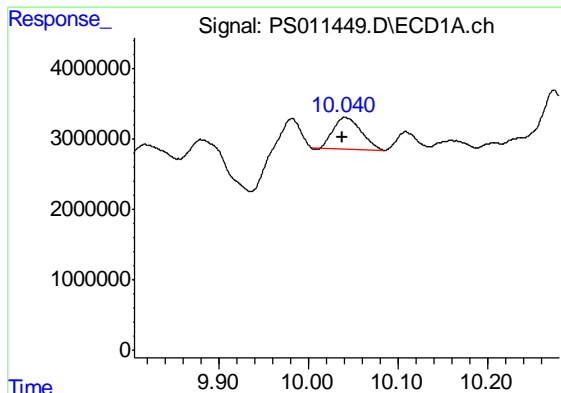
#12 2,4,5-T

R.T.: 9.496 min
 Delta R.T.: 0.012 min
 Response: 24373045
 Conc: 4.83 ng/ml



#12 2,4,5-T

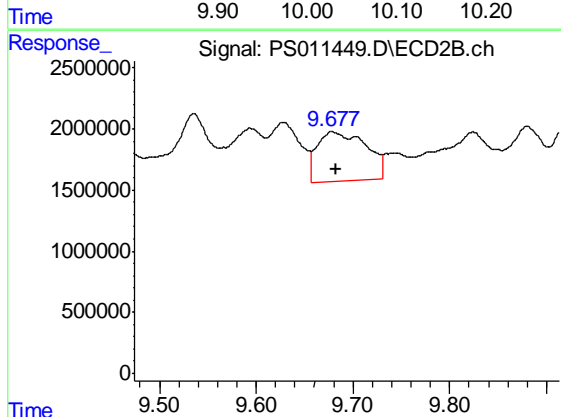
R.T.: 9.177 min
 Delta R.T.: 0.000 min
 Response: 13543789
 Conc: 4.47 ng/ml



#13 2,4-DB

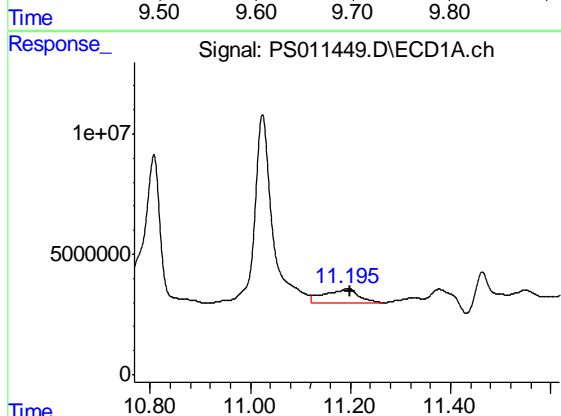
R.T.: 10.041 min
 Delta R.T.: 0.004 min
 Response: 9631655
 Conc: 14.94 ng/ml

Instrument :
 ECD_S
 ClientSampled :
 CRT-018



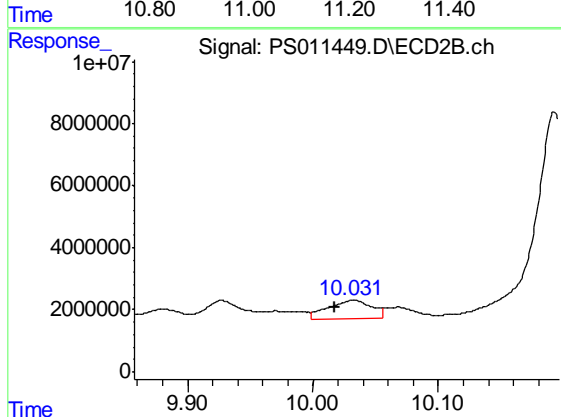
#13 2,4-DB

R.T.: 9.679 min
 Delta R.T.: -0.004 min
 Response: 14087726
 Conc: 32.95 ng/ml



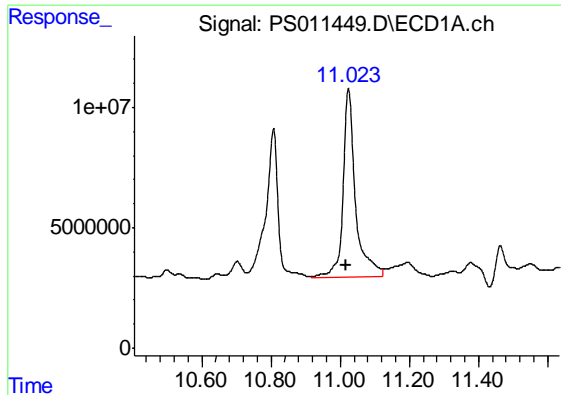
#14 DINOSEB

R.T.: 11.195 min
 Delta R.T.: -0.004 min
 Response: 28119611
 Conc: 7.29 ng/ml



#14 DINOSEB

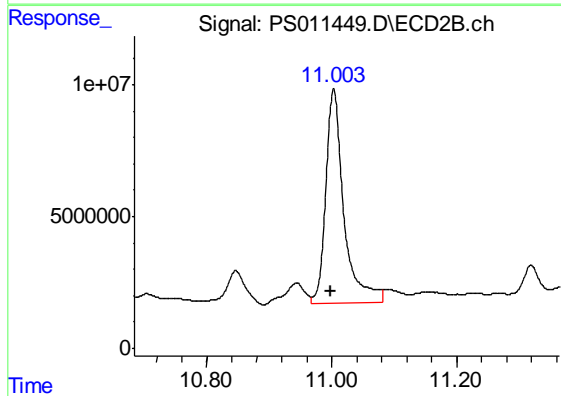
R.T.: 10.033 min
 Delta R.T.: 0.016 min
 Response: 14197553
 Conc: 6.62 ng/ml



#15 Picloram

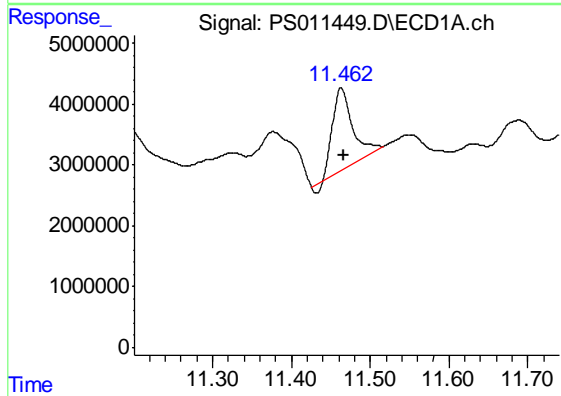
R.T.: 11.024 min
 Delta R.T.: 0.006 min
 Response: 196859273
 Conc: 31.20 ng/ml

Instrument :
 ECD_S
 ClientSampled :
 CRT-018



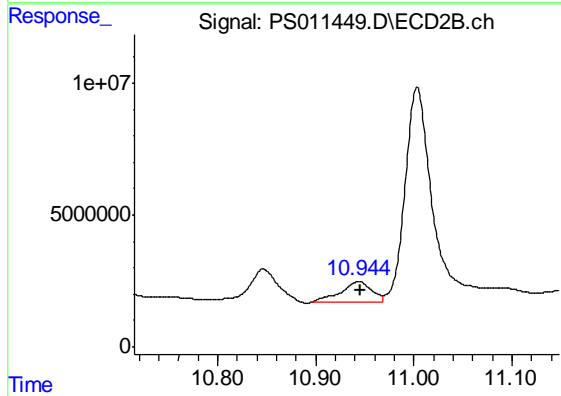
#15 Picloram

R.T.: 11.003 min
 Delta R.T.: 0.004 min
 Response: 162659132
 Conc: 37.19 ng/ml



#16 DCPA

R.T.: 11.463 min
 Delta R.T.: -0.002 min
 Response: 22808605
 Conc: 3.54 ng/ml



#16 DCPA

R.T.: 10.944 min
 Delta R.T.: -0.002 min
 Response: 17106031
 Conc: 4.52 ng/ml