

Data Path : Z:\pestpcbsrv\HPCHEM1\ECD\_S\Data\PS072924\  
 Data File : PS027229.D  
 Signal(s) : Signal #1: ECD1A.ch Signal #2: ECD2B.ch  
 Acq On : 29 Jul 2024 18:10  
 Operator : AR\AJ  
 Sample : P3376-04MS  
 Misc :  
 ALS Vial : 7 Sample Multiplier: 1

Instrument :  
 ECD\_S  
 ClientSampleId :  
 WC-6-Full Waste ClassMS

Integration File signal 1: autoint1.e  
 Integration File signal 2: autoint2.e  
 Quant Time: Jul 30 01:58:59 2024  
 Quant Method : Z:\pestpcbsrv\HPCHEM1\ECD\_S\Method\PS071224.M  
 Quant Title : 8080.M  
 QLast Update : Thu Jun 27 04:33:52 2024  
 Response via : Initial Calibration  
 Integrator: ChemStation

Volume Inj. : 1 µl  
 Signal #1 Phase : ZB-MR2 Signal #2 Phase: ZB-MR2  
 Signal #1 Info : 30M x 0.32mm x0.5 Signal #2 Info : 30M x 0.32mm x 0.25µm

Compound	RT#1	RT#2	Resp#1	Resp#2	ng/ml	ng/ml
System Monitoring Compounds						
4) S 2,4-DCAA	7.194	7.752	1106.3E6	584.3E6	437.491	252.011 #
Target Compounds						
1) T Dalapon	2.601	2.682	3782.9E6	2509.4E6	1137.851	604.663 #
2) T 3,5-DICHL...	6.373	6.705	1153.2E6	898.3E6	291.595	264.842
3) T 4-Nitroph...	7.002	7.312f	-5131290	44621346	N.D.	26.985
5) T DICAMBA	7.380	7.951	3124.7E6	2967.0E6	284.391	281.589
6) T MCPP	7.556	8.048	164.9E6	219.7E6	21.481	28.359 #
7) T MCPA	7.704	8.292	432.3E6	249.5E6	42.427	23.828 #
8) T DICHLORPROP	8.075	8.663	783.1E6	693.3E6	291.843	268.051
9) T 2,4-D	8.302	8.993	1244.9E6	991.2E6	432.708	343.769
10) T Pentachlo...	8.595	9.521	8544.3E6	8079.5E6	216.252	207.051
11) T 2,4,5-TP ...	9.168	9.896	4427.6E6	7134.1E6	292.495	447.368 #
12) T 2,4,5-T	9.457	10.313	4257.4E6	4531.2E6	288.033	283.580
13) T 2,4-DB	10.026	10.878	1094.4E6	363.9E6	506.464	180.052 #
14) T DINOSEB	11.207f	11.286f	89876296	98576772	7.980	8.824
15) T Picloram	11.033	12.350	4601.1E6	4974.1E6	236.208	212.733
16) T DCPA	11.513	12.298	4285.7E6	4501.9E6	238.718	257.343

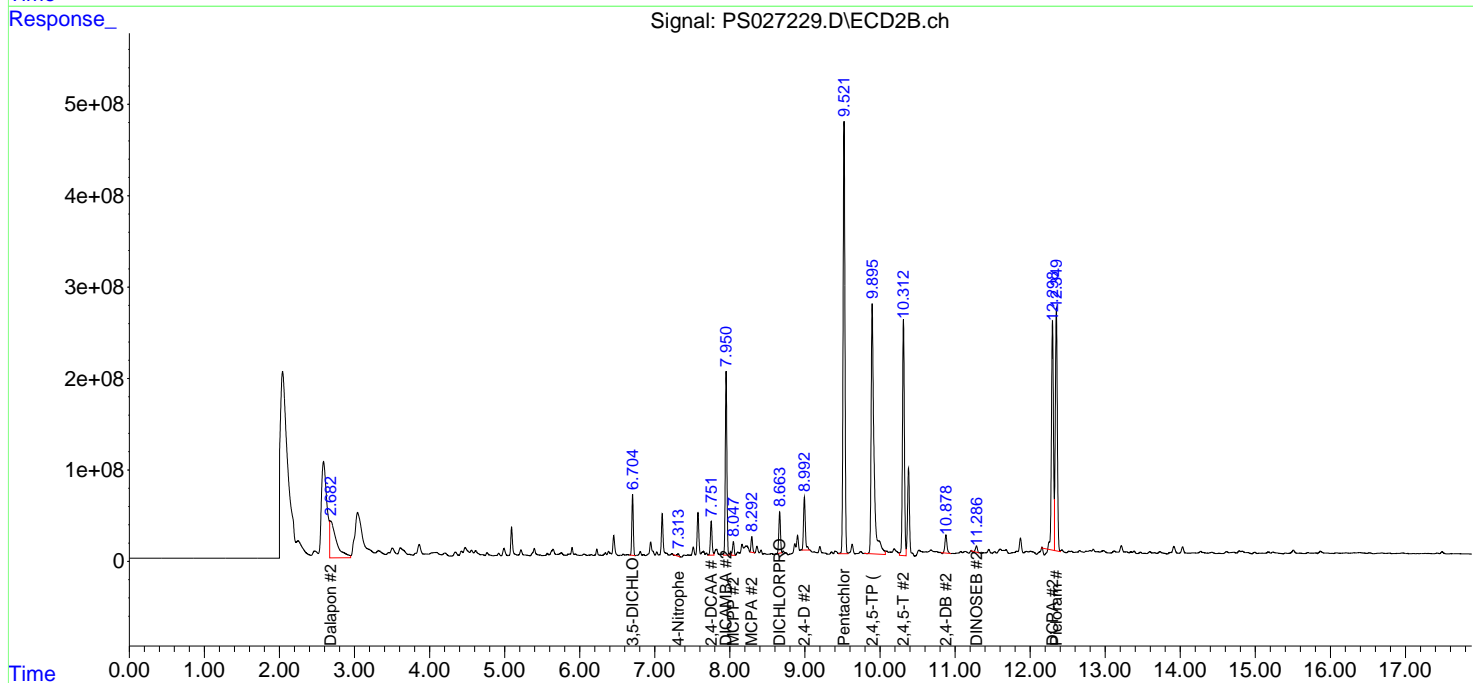
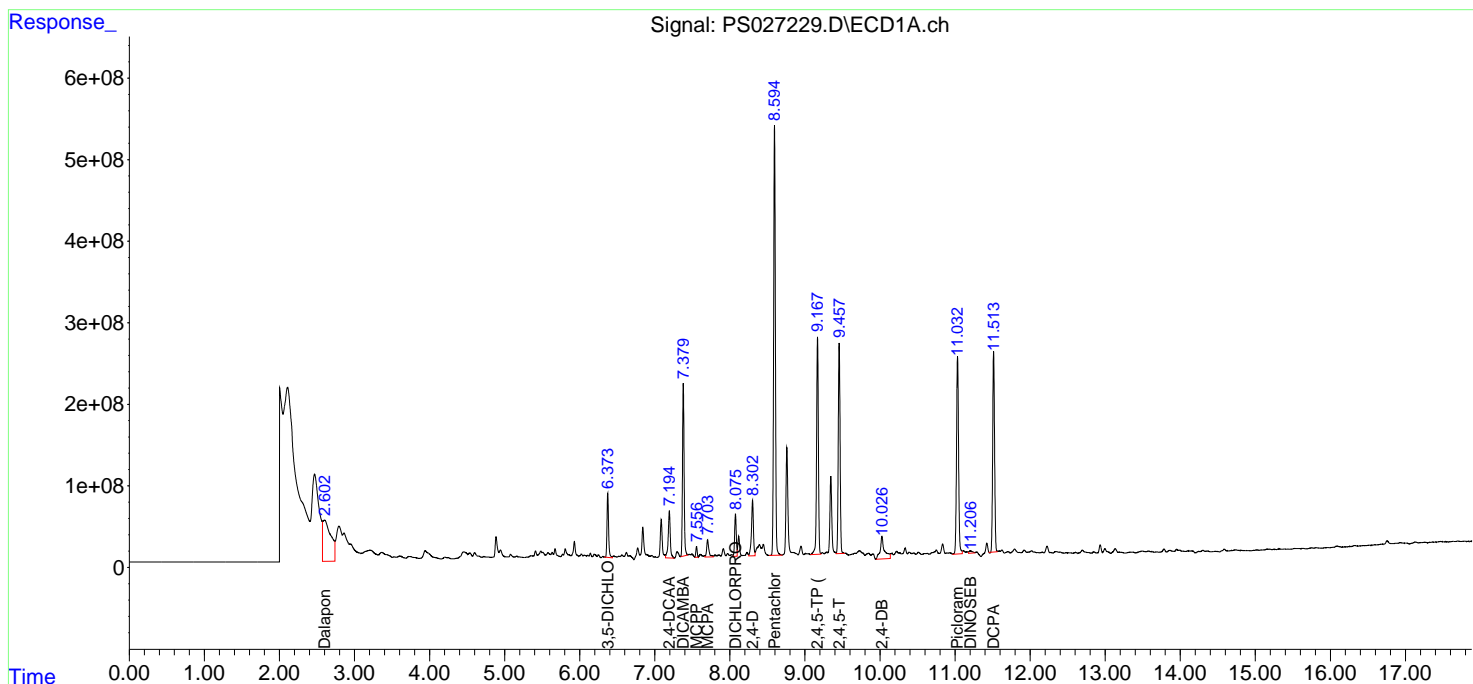
(f)=RT Delta > 1/2 Window (#)=Amounts differ by > 25% (m)=manual int.

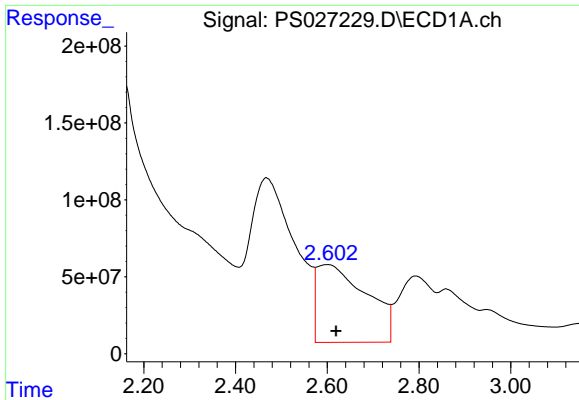
Data Path : Z:\pestpcbsrv\HPCHEM1\ECD\_S\Data\PS072924\  
 Data File : PS027229.D  
 Signal(s) : Signal #1: ECD1A.ch Signal #2: ECD2B.ch  
 Acq On : 29 Jul 2024 18:10  
 Operator : AR\AJ  
 Sample : P3376-04MS  
 Misc :  
 ALS Vial : 7 Sample Multiplier: 1

Instrument :  
 ECD\_S  
 ClientSampleId :  
 WC-6-Full Waste ClassMS

Integration File signal 1: autoint1.e  
 Integration File signal 2: autoint2.e  
 Quant Time: Jul 30 01:58:59 2024  
 Quant Method : Z:\pestpcbsrv\HPCHEM1\ECD\_S\Method\PS071224.M  
 Quant Title : 8080.M  
 QLast Update : Thu Jun 27 04:33:52 2024  
 Response via : Initial Calibration  
 Integrator: ChemStation

Volume Inj. : 1 µl  
 Signal #1 Phase : ZB-MR1 Signal #2 Phase: ZB-MR2  
 Signal #1 Info : 30M x 0.32mm x0.5 Signal #2 Info : 30M x 0.32mm x 0.25µm

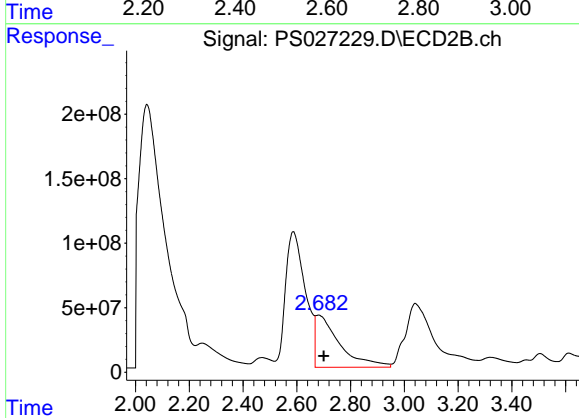




#1 Dalapon

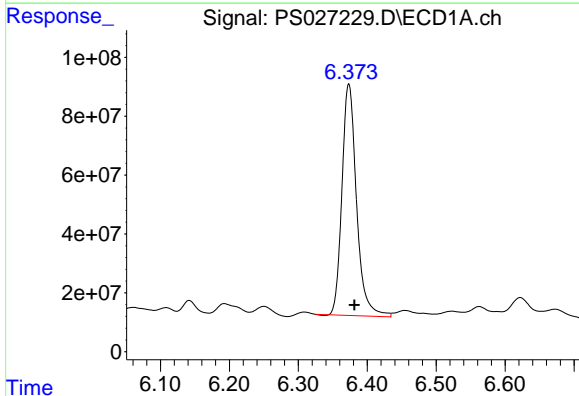
R.T.: 2.601 min  
 Delta R.T.: -0.018 min  
 Response: 3782894926  
 Conc: 1137.85 ng/ml

Instrument : ECD\_S  
 ClientSampleId : WC-6-Full Waste ClassMS



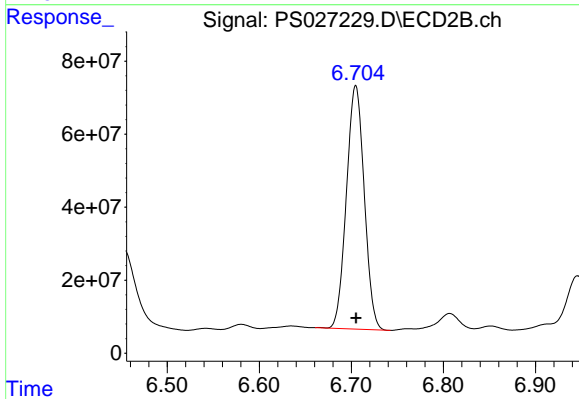
#1 Dalapon

R.T.: 2.682 min  
 Delta R.T.: -0.018 min  
 Response: 2509420037  
 Conc: 604.66 ng/ml



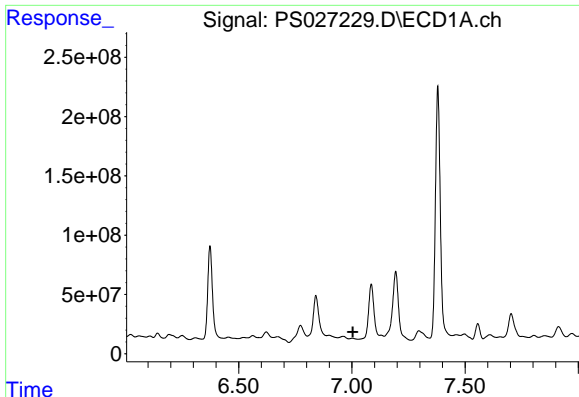
#2 3,5-DICHLOROBENZOIC ACID

R.T.: 6.373 min  
 Delta R.T.: -0.008 min  
 Response: 1153173208  
 Conc: 291.60 ng/ml



#2 3,5-DICHLOROBENZOIC ACID

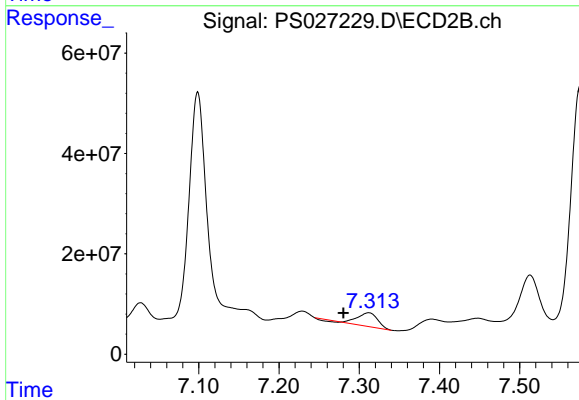
R.T.: 6.705 min  
 Delta R.T.: 0.000 min  
 Response: 898270190  
 Conc: 264.84 ng/ml



#3 4-Nitrophenol

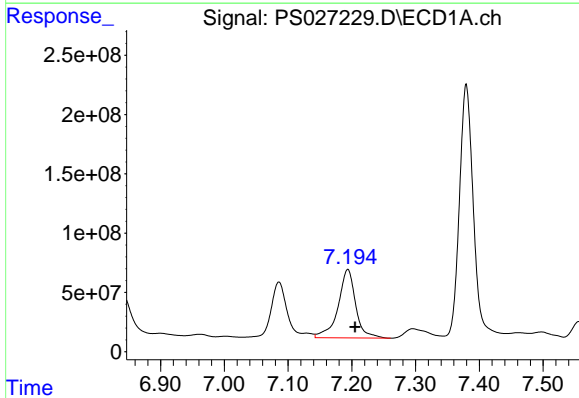
R.T.: 7.002 min  
 Delta R.T.: -0.003 min  
 Response: -5131290  
 Conc: N.D.

Instrument :  
 ECD\_S  
 ClientSampleId :  
 WC-6-Full Waste ClassMS



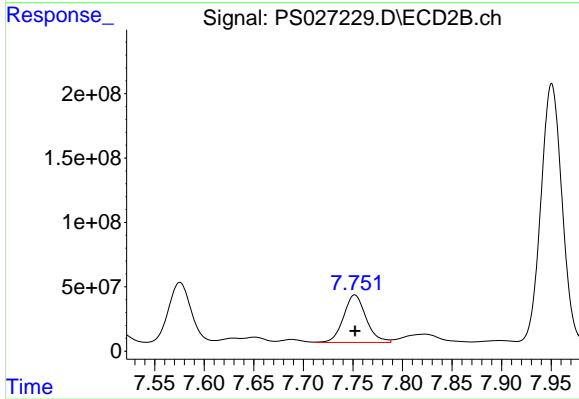
#3 4-Nitrophenol

R.T.: 7.312 min  
 Delta R.T.: 0.031 min  
 Response: 44621346  
 Conc: 26.98 ng/ml



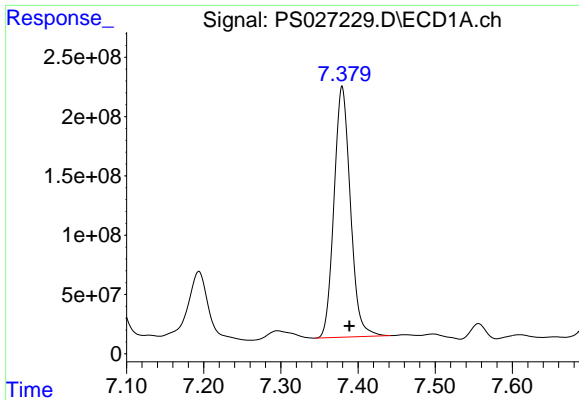
#4 2,4-DCAA

R.T.: 7.194 min  
 Delta R.T.: -0.012 min  
 Response: 1106311709  
 Conc: 437.49 ng/ml



#4 2,4-DCAA

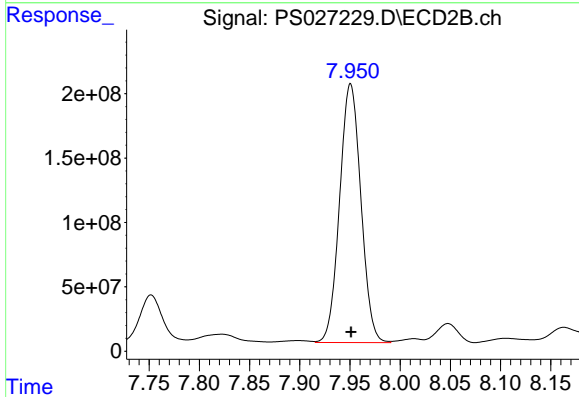
R.T.: 7.752 min  
 Delta R.T.: 0.000 min  
 Response: 584343709  
 Conc: 252.01 ng/ml



#5 DICAMBA

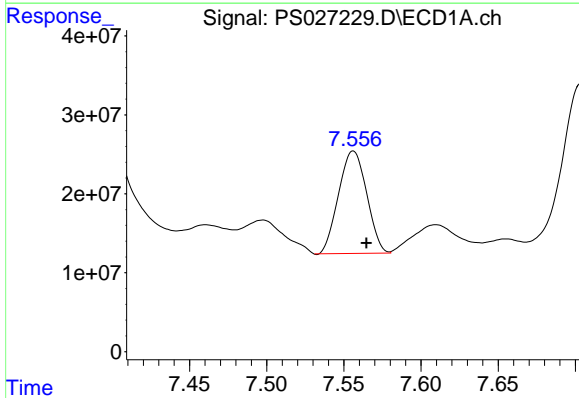
R.T.: 7.380 min  
 Delta R.T.: -0.009 min  
 Response: 3124691809  
 Conc: 284.39 ng/ml

Instrument :  
 ECD\_S  
 ClientSampleId :  
 WC-6-Full Waste ClassMS



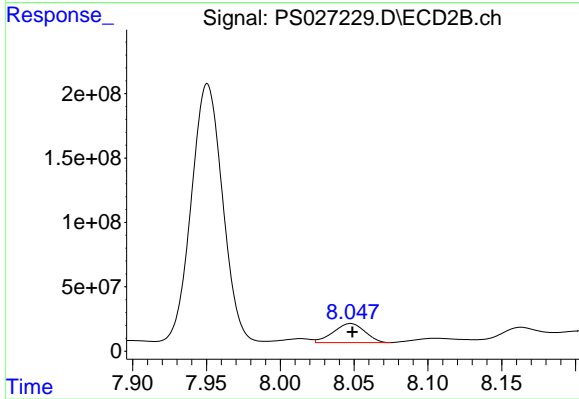
#5 DICAMBA

R.T.: 7.951 min  
 Delta R.T.: 0.000 min  
 Response: 2966960512  
 Conc: 281.59 ng/ml



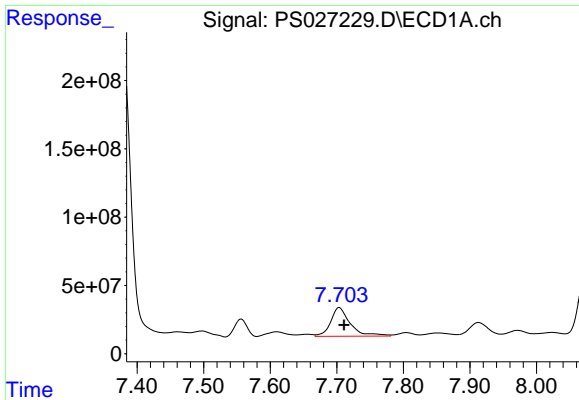
#6 MCPP

R.T.: 7.556 min  
 Delta R.T.: -0.009 min  
 Response: 164889492  
 Conc: 21.48 ug/ml



#6 MCPP

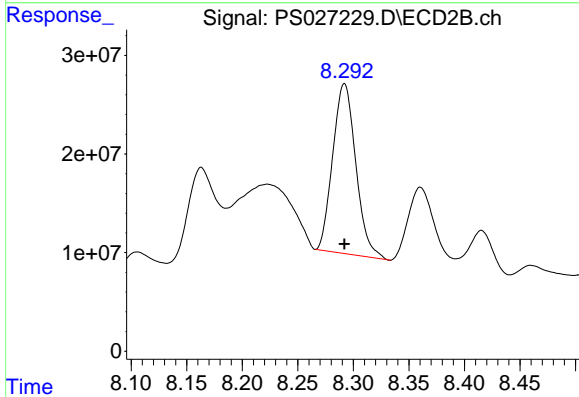
R.T.: 8.048 min  
 Delta R.T.: -0.001 min  
 Response: 219688194  
 Conc: 28.36 ug/ml



#7 MCPA

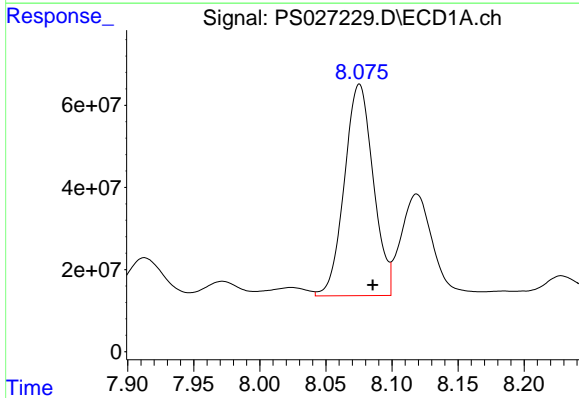
R.T.: 7.704 min  
 Delta R.T.: -0.008 min  
 Response: 432342380  
 Conc: 42.43 ug/ml

Instrument :  
 ECD\_S  
 ClientSampleId :  
 WC-6-Full Waste ClassMS



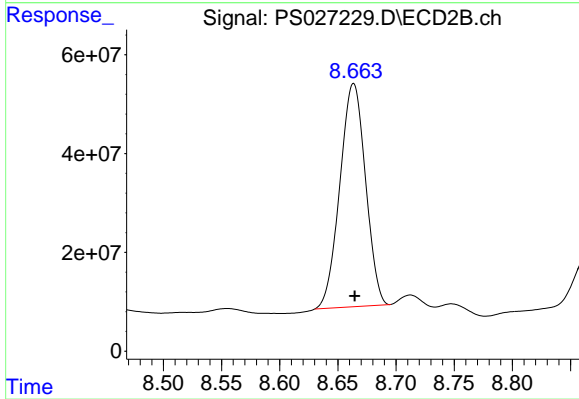
#7 MCPA

R.T.: 8.292 min  
 Delta R.T.: 0.000 min  
 Response: 249456020  
 Conc: 23.83 ug/ml



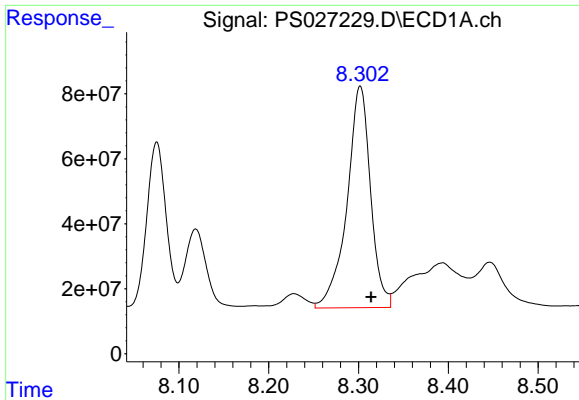
#8 DICHLORPROP

R.T.: 8.075 min  
 Delta R.T.: -0.010 min  
 Response: 783126948  
 Conc: 291.84 ng/ml



#8 DICHLORPROP

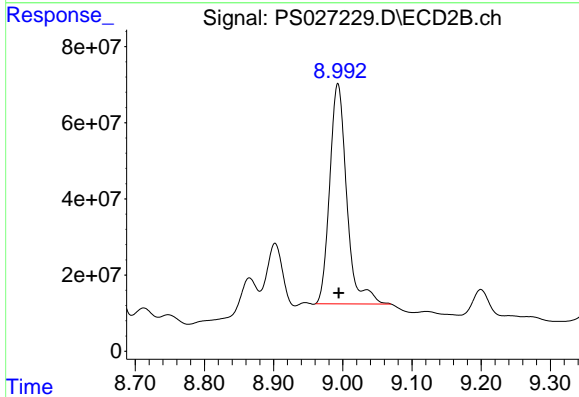
R.T.: 8.663 min  
 Delta R.T.: 0.000 min  
 Response: 693250743  
 Conc: 268.05 ng/ml



#9 2,4-D

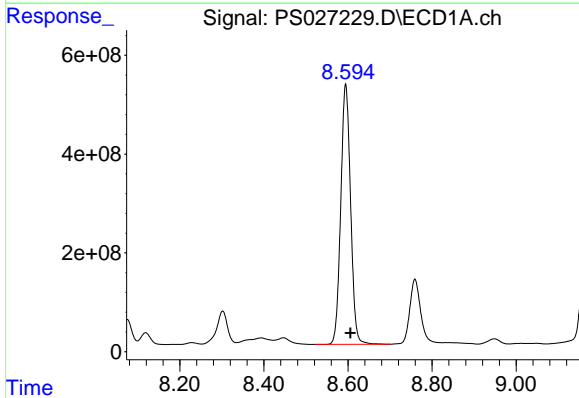
R.T.: 8.302 min  
 Delta R.T.: -0.012 min  
 Response: 1244939921  
 Conc: 432.71 ng/ml

Instrument :  
 ECD\_S  
 ClientSampleId :  
 WC-6-Full Waste ClassMS



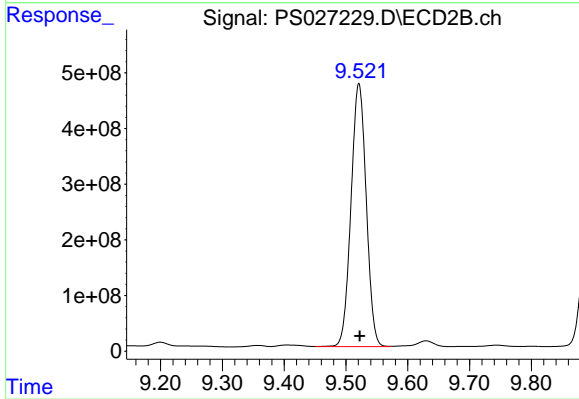
#9 2,4-D

R.T.: 8.993 min  
 Delta R.T.: -0.001 min  
 Response: 991155446  
 Conc: 343.77 ng/ml



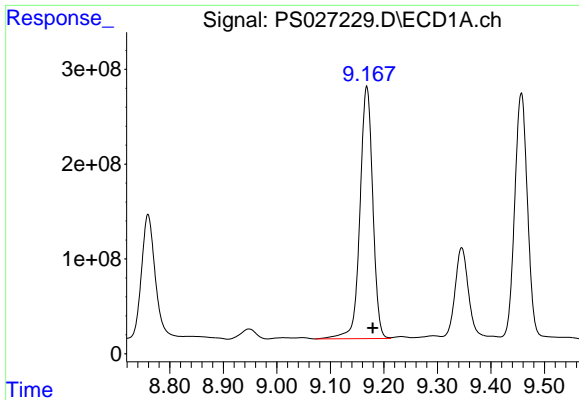
#10 Pentachlorophenol

R.T.: 8.595 min  
 Delta R.T.: -0.012 min  
 Response: 8544326899  
 Conc: 216.25 ng/ml



#10 Pentachlorophenol

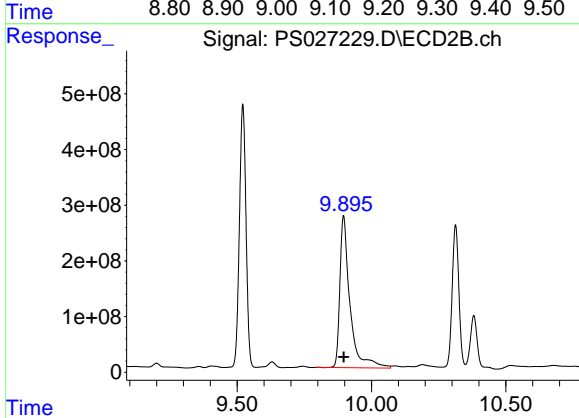
R.T.: 9.521 min  
 Delta R.T.: -0.002 min  
 Response: 8079479203  
 Conc: 207.05 ng/ml



#11 2,4,5-TP (SILVEX)

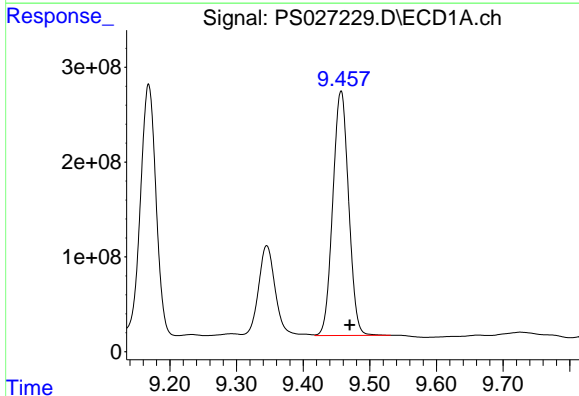
R.T.: 9.168 min  
 Delta R.T.: -0.011 min  
 Response: 4427612044  
 Conc: 292.49 ng/ml

Instrument :  
 ECD\_S  
 ClientSampleId :  
 WC-6-Full Waste ClassMS



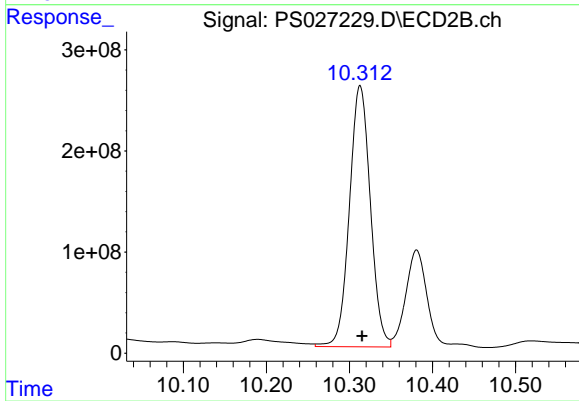
#11 2,4,5-TP (SILVEX)

R.T.: 9.896 min  
 Delta R.T.: 0.000 min  
 Response: 7134116936  
 Conc: 447.37 ng/ml



#12 2,4,5-T

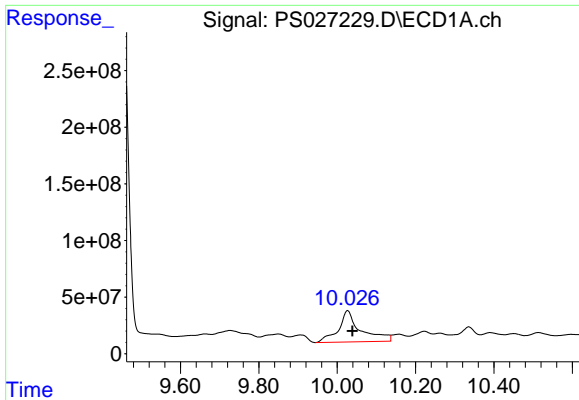
R.T.: 9.457 min  
 Delta R.T.: -0.013 min  
 Response: 4257383873  
 Conc: 288.03 ng/ml



#12 2,4,5-T

R.T.: 10.313 min  
 Delta R.T.: -0.002 min  
 Response: 4531234590  
 Conc: 283.58 ng/ml

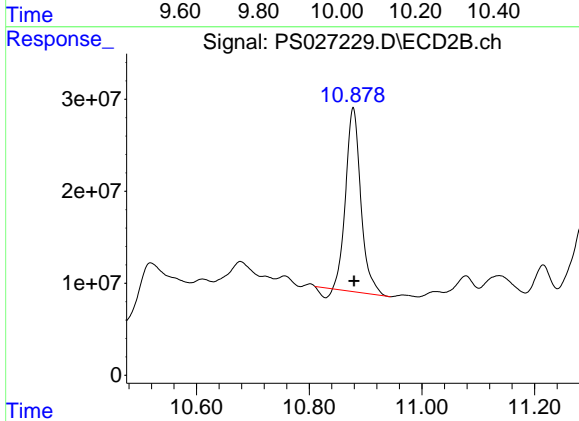




#13 2,4-DB

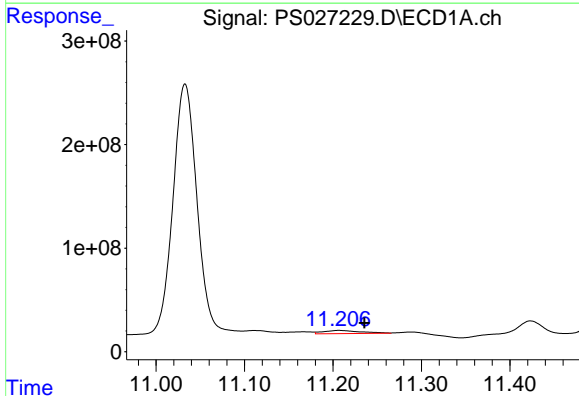
R.T.: 10.026 min  
 Delta R.T.: -0.013 min  
 Response: 1094414452  
 Conc: 506.46 ng/ml

Instrument :  
 ECD\_S  
 ClientSampleId :  
 WC-6-Full Waste ClassMS



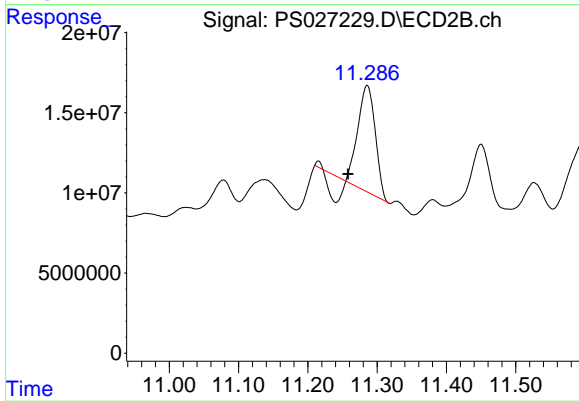
#13 2,4-DB

R.T.: 10.878 min  
 Delta R.T.: -0.002 min  
 Response: 363878502  
 Conc: 180.05 ng/ml



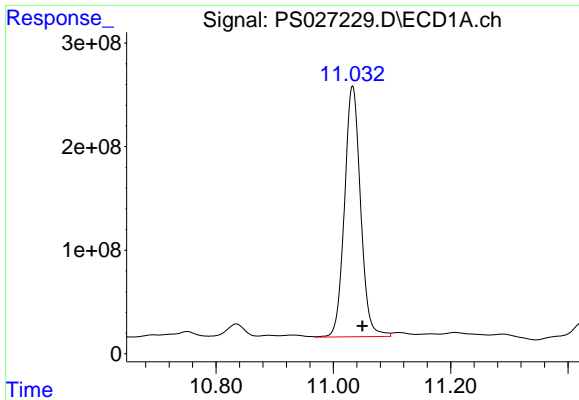
#14 DINOSEB

R.T.: 11.207 min  
 Delta R.T.: -0.028 min  
 Response: 89876296  
 Conc: 7.98 ng/ml



#14 DINOSEB

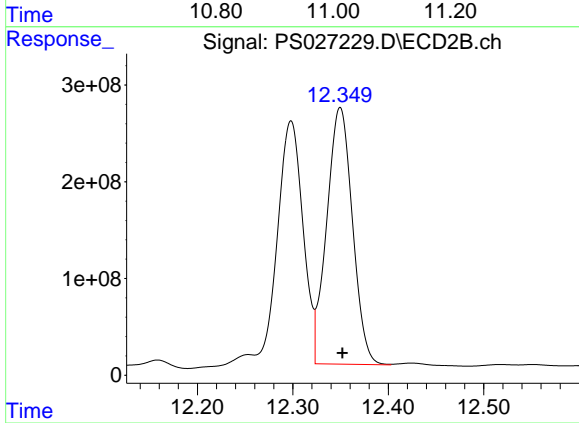
R.T.: 11.286 min  
 Delta R.T.: 0.027 min  
 Response: 98576772  
 Conc: 8.82 ng/ml



#15 Picloram

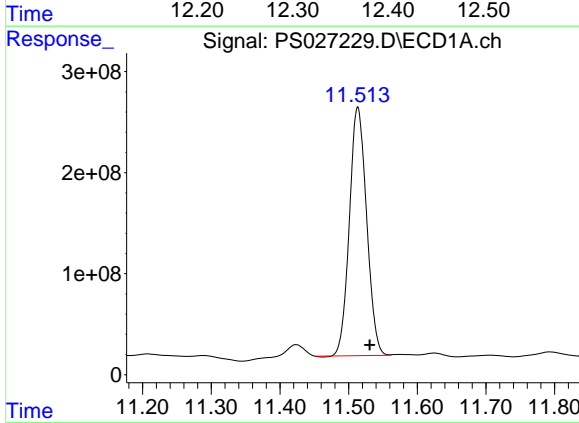
R.T.: 11.033 min  
 Delta R.T.: -0.017 min  
 Response: 4601104308  
 Conc: 236.21 ng/ml

Instrument :  
 ECD\_S  
 ClientSampleId :  
 WC-6-Full Waste ClassMS



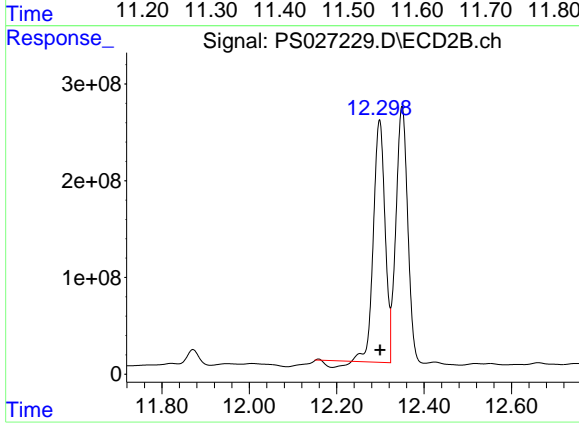
#15 Picloram

R.T.: 12.350 min  
 Delta R.T.: -0.002 min  
 Response: 4974124406  
 Conc: 212.73 ng/ml



#16 DCPA

R.T.: 11.513 min  
 Delta R.T.: -0.018 min  
 Response: 4285657785  
 Conc: 238.72 ng/ml



#16 DCPA

R.T.: 12.298 min  
 Delta R.T.: 0.000 min  
 Response: 4501918549  
 Conc: 257.34 ng/ml