

Data Path : Z:\pestpcbsrv\HPCHEM1\ECD_S\Data\PS072924\
 Data File : PS027230.D
 Signal(s) : Signal #1: ECD1A.ch Signal #2: ECD2B.ch
 Acq On : 29 Jul 2024 18:34
 Operator : AR\AJ
 Sample : P3376-04MSD
 Misc :
 ALS Vial : 8 Sample Multiplier: 1

Instrument :
 ECD_S
ClientSampleId :
 WC-6-Full Waste ClassMSD

Integration File signal 1: autoint1.e
 Integration File signal 2: autoint2.e
 Quant Time: Jul 30 01:59:17 2024
 Quant Method : Z:\pestpcbsrv\HPCHEM1\ECD_S\Method\PS071224.M
 Quant Title : 8080.M
 QLast Update : Thu Jun 27 04:33:52 2024
 Response via : Initial Calibration
 Integrator: ChemStation

Volume Inj. : 1 µl
 Signal #1 Phase : ZB-MR1 Signal #2 Phase: ZB-MR2
 Signal #1 Info : 30M x 0.32mm x0.5 Signal #2 Info : 30M x 0.32mm x 0.25µm

Compound	RT#1	RT#2	Resp#1	Resp#2	ng/ml	ng/ml

System Monitoring Compounds						
4) S 2,4-DCAA	7.193	7.752	960.0E6	494.0E6	379.632	213.028 #
Target Compounds						
1) T Dalapon	2.600	2.684	3656.8E6	2387.5E6	1099.909	575.287 #
2) T 3,5-DICHL...	6.374	6.705	1042.5E6	806.0E6	263.615	237.644
3) T 4-Nitroph...	7.001	7.312f	-5931482	42080747	N.D.	25.449
5) T DICAMBA	7.380	7.951	2996.8E6	2860.7E6	272.752	271.501
6) T MCPP	7.556	8.048	142.3E6	188.9E6	18.540	24.382 #
7) T MCPA	7.703	8.292	407.7E6	246.4E6	40.011	23.536 #
8) T DICHLORPROP	8.075	8.663	731.4E6	646.7E6	272.563	250.053
9) T 2,4-D	8.302	8.993	1188.7E6	969.6E6	413.147	336.287
10) T Pentachlo...	8.595	9.521	6864.8E6	6418.0E6	173.744	164.472
11) T 2,4,5-TP ...	9.168	9.899	4140.6E6	7090.9E6	273.533	444.660 #
12) T 2,4,5-T	9.456	10.313	3996.7E6	4182.9E6	270.393	261.779
13) T 2,4-DB	10.027	10.879	943.3E6	270.3E6	436.521	133.729 #
14) T DINOSEB	11.206f	11.287f	56632036	105.5E6	5.028	9.443 #
15) T Picloram	11.034	12.349	4506.7E6	4923.3E6	231.363	210.558
16) T DCPA	11.514	12.298	4531.8E6	4668.7E6	252.429	266.877

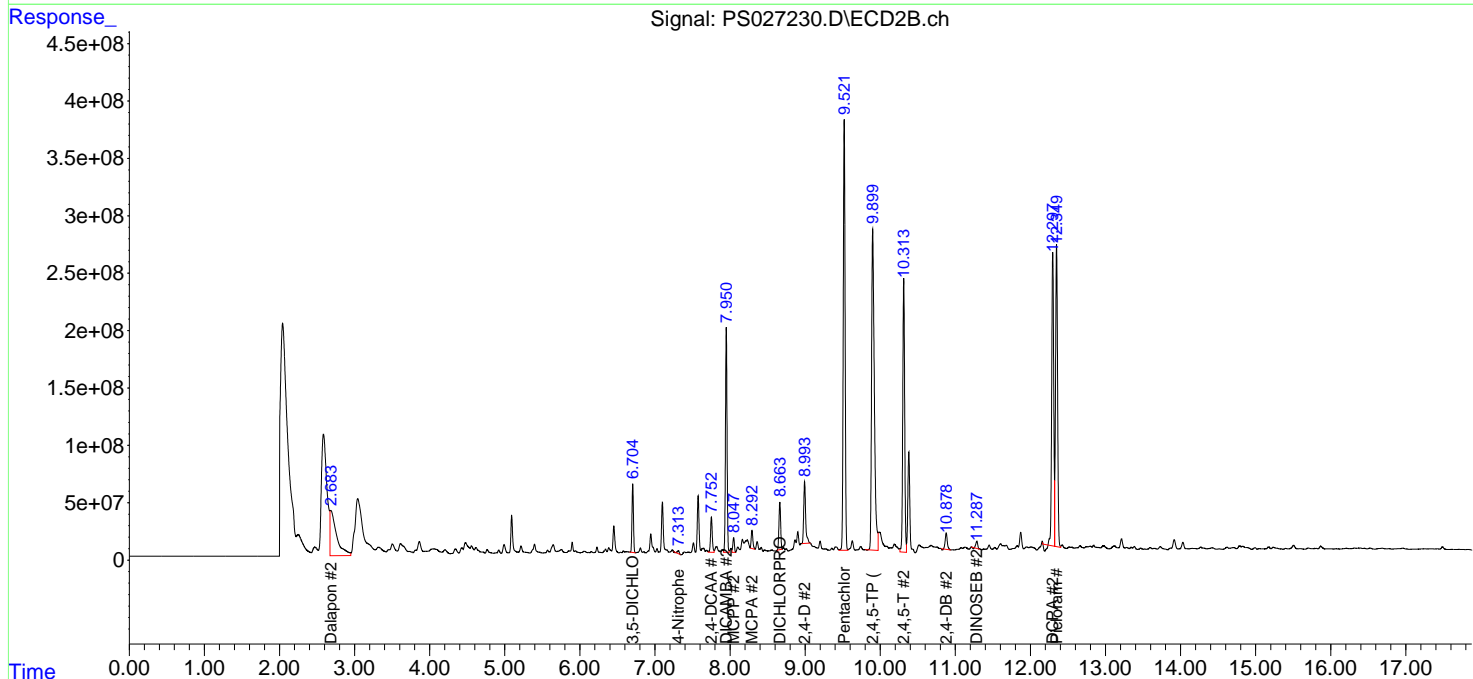
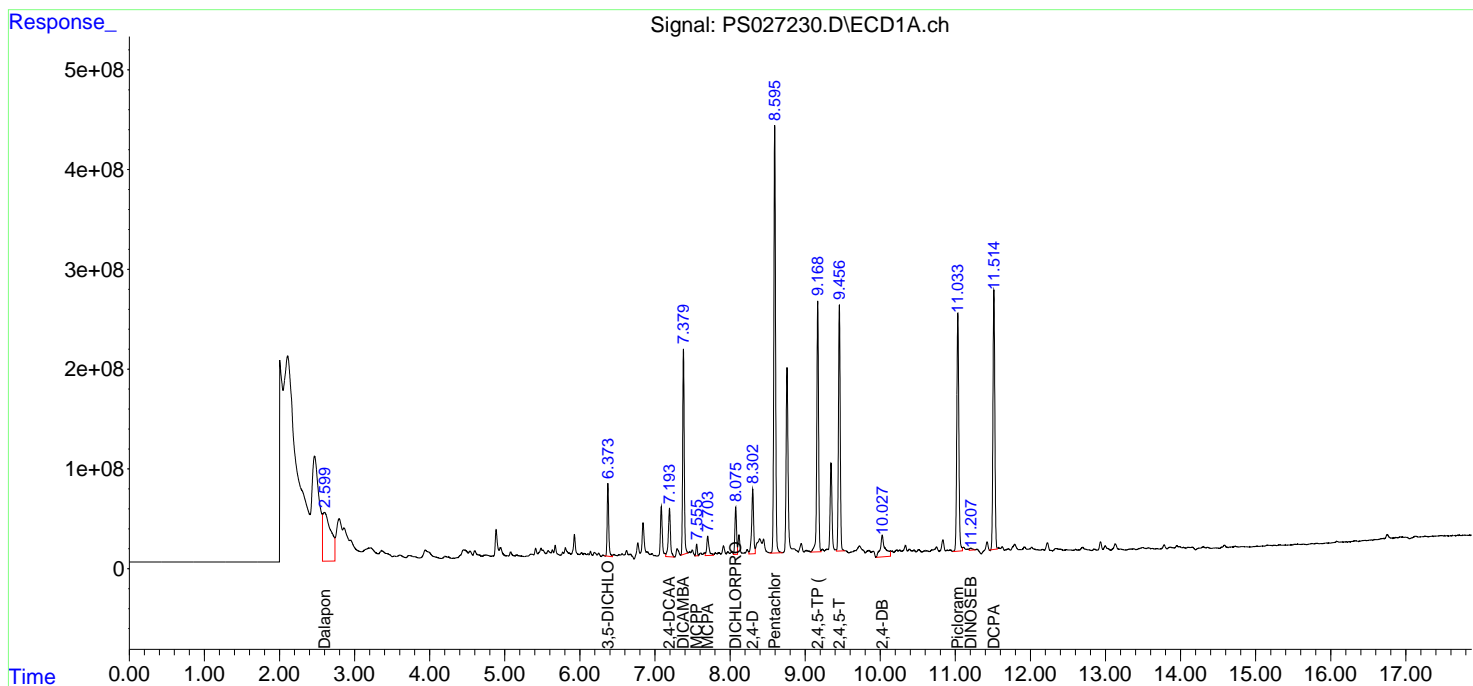
(f)=RT Delta > 1/2 Window (#)=Amounts differ by > 25% (m)=manual int.

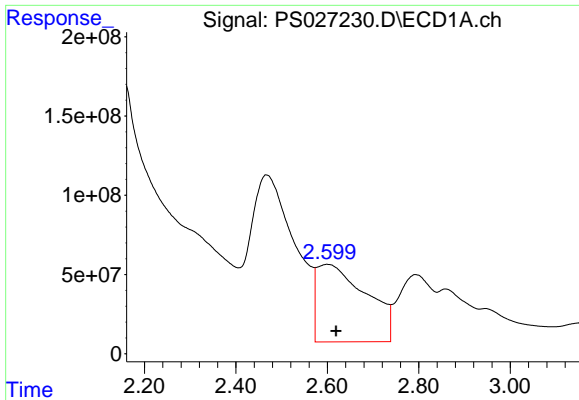
Data Path : Z:\pestpcbsrv\HPCHEM1\ECD_S\Data\PS072924\
 Data File : PS027230.D
 Signal(s) : Signal #1: ECD1A.ch Signal #2: ECD2B.ch
 Acq On : 29 Jul 2024 18:34
 Operator : AR\AJ
 Sample : P3376-04MSD
 Misc :
 ALS Vial : 8 Sample Multiplier: 1

Instrument :
 ECD_S
 ClientSampleId :
 WC-6-Full Waste ClassMSD

Integration File signal 1: autoint1.e
 Integration File signal 2: autoint2.e
 Quant Time: Jul 30 01:59:17 2024
 Quant Method : Z:\pestpcbsrv\HPCHEM1\ECD_S\Method\PS071224.M
 Quant Title : 8080.M
 QLast Update : Thu Jun 27 04:33:52 2024
 Response via : Initial Calibration
 Integrator: ChemStation

Volume Inj. : 1 µl
 Signal #1 Phase : ZB-MR1 Signal #2 Phase: ZB-MR2
 Signal #1 Info : 30M x 0.32mm x0.5 Signal #2 Info : 30M x 0.32mm x 0.25µm

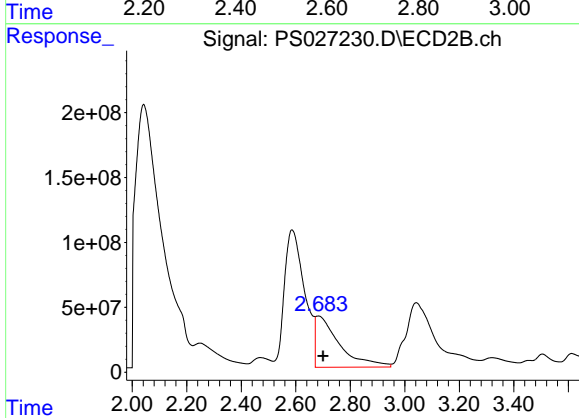




#1 Dalapon

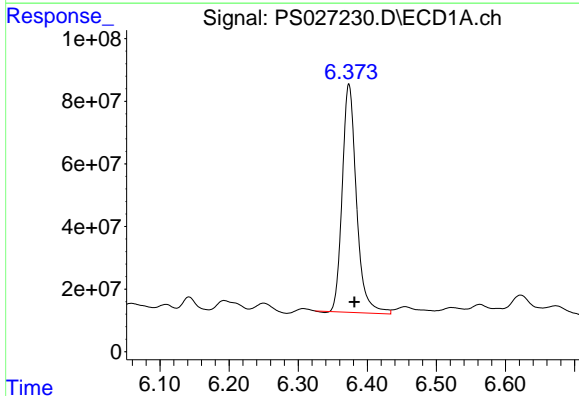
R.T.: 2.600 min
 Delta R.T.: -0.019 min
 Response: 3656751666
 Conc: 1099.91 ng/ml

Instrument : ECD_S
 ClientSampleId : WC-6-Full Waste ClassMSD



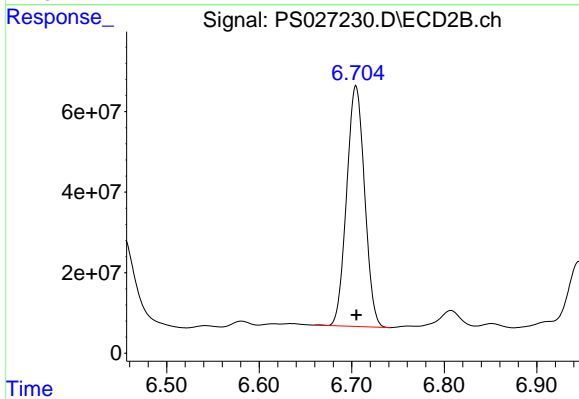
#1 Dalapon

R.T.: 2.684 min
 Delta R.T.: -0.017 min
 Response: 2387506525
 Conc: 575.29 ng/ml



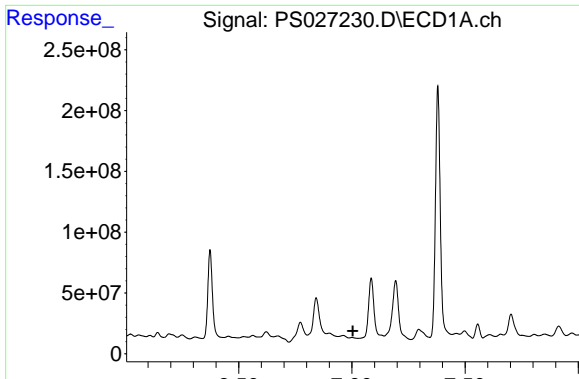
#2 3,5-DICHLOROBENZOIC ACID

R.T.: 6.374 min
 Delta R.T.: -0.008 min
 Response: 1042519260
 Conc: 263.61 ng/ml



#2 3,5-DICHLOROBENZOIC ACID

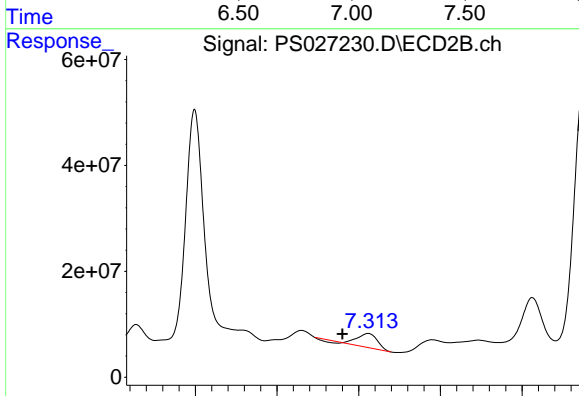
R.T.: 6.705 min
 Delta R.T.: 0.000 min
 Response: 806020521
 Conc: 237.64 ng/ml



#3 4-Nitrophenol

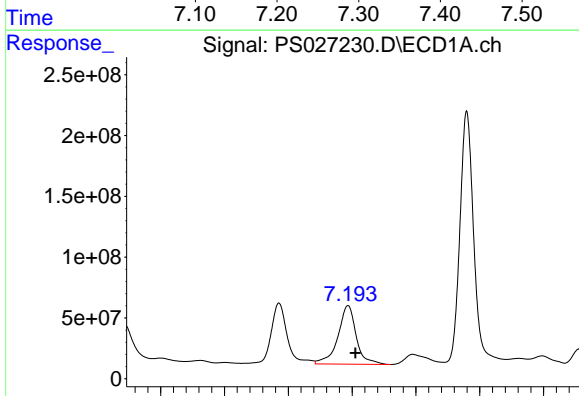
R.T.: 7.001 min
 Delta R.T.: -0.004 min
 Response: -5931482
 Conc: N.D.

Instrument :
 ECD_S
 ClientSampleId :
 WC-6-Full Waste ClassMSD



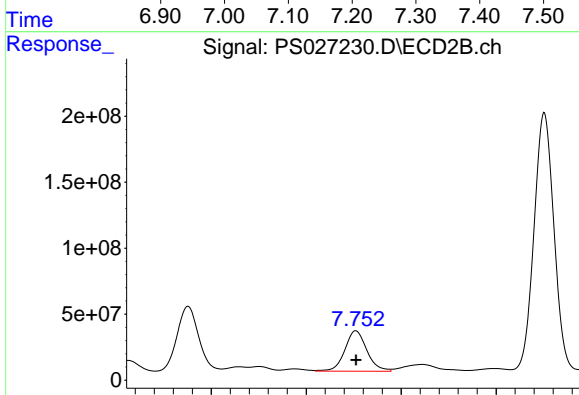
#3 4-Nitrophenol

R.T.: 7.312 min
 Delta R.T.: 0.031 min
 Response: 42080747
 Conc: 25.45 ng/ml



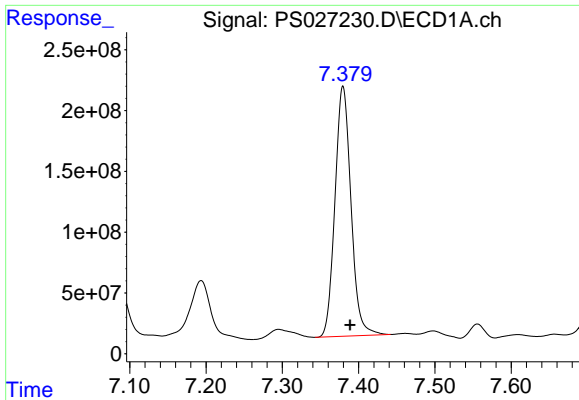
#4 2,4-DCAA

R.T.: 7.193 min
 Delta R.T.: -0.012 min
 Response: 960000076
 Conc: 379.63 ng/ml



#4 2,4-DCAA

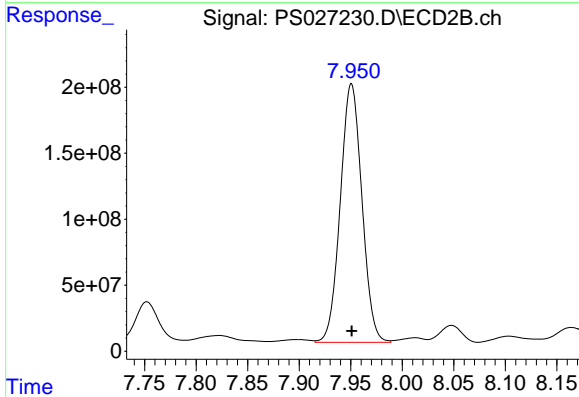
R.T.: 7.752 min
 Delta R.T.: 0.000 min
 Response: 493952839
 Conc: 213.03 ng/ml



#5 DICAMBA

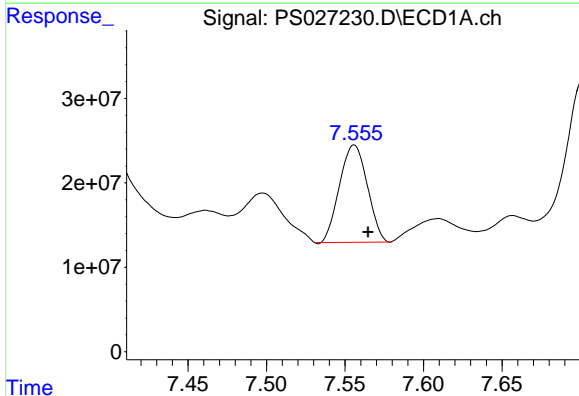
R.T.: 7.380 min
 Delta R.T.: -0.009 min
 Response: 2996801181
 Conc: 272.75 ng/ml

Instrument :
 ECD_S
 ClientSampleId :
 WC-6-Full Waste ClassMSD



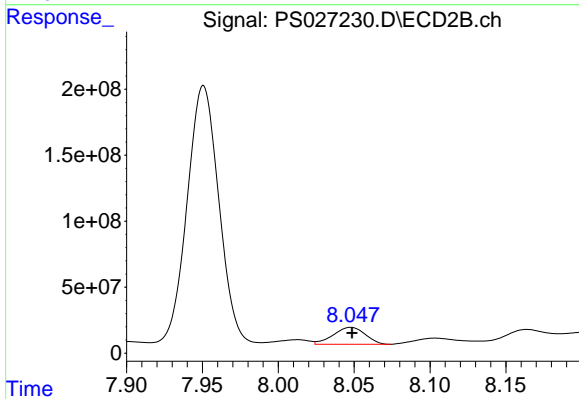
#5 DICAMBA

R.T.: 7.951 min
 Delta R.T.: 0.000 min
 Response: 2860671699
 Conc: 271.50 ng/ml



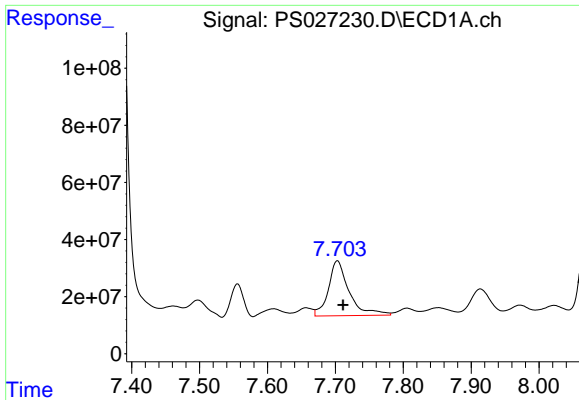
#6 MCPP

R.T.: 7.556 min
 Delta R.T.: -0.009 min
 Response: 142316663
 Conc: 18.54 ug/ml



#6 MCPP

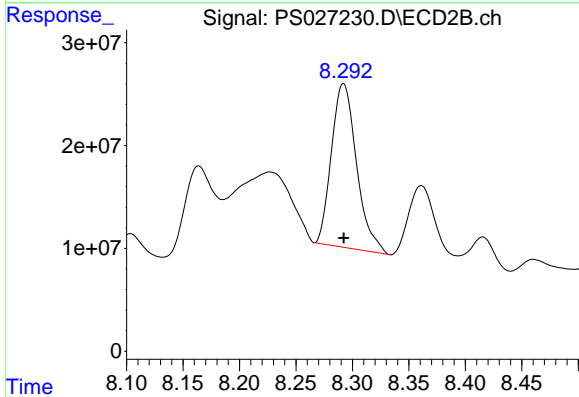
R.T.: 8.048 min
 Delta R.T.: 0.000 min
 Response: 188878392
 Conc: 24.38 ug/ml



#7 MCPA

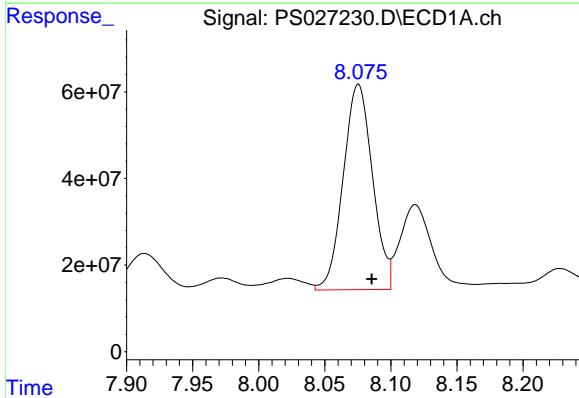
R.T.: 7.703 min
 Delta R.T.: -0.008 min
 Response: 407717963
 Conc: 40.01 ug/ml

Instrument :
 ECD_S
 ClientSampleId :
 WC-6-Full Waste ClassMSD



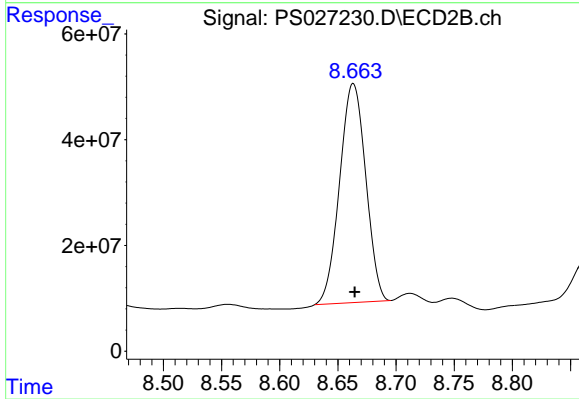
#7 MCPA

R.T.: 8.292 min
 Delta R.T.: 0.000 min
 Response: 246397515
 Conc: 23.54 ug/ml



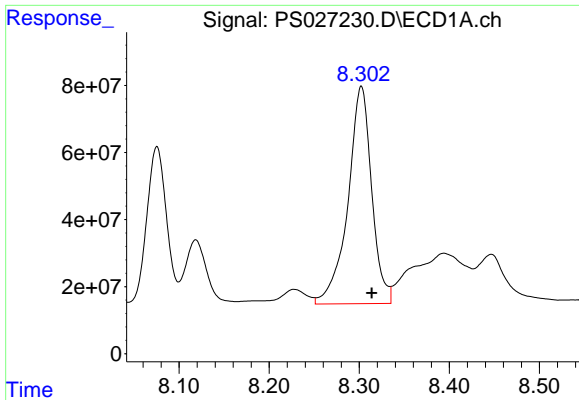
#8 DICHLORPROP

R.T.: 8.075 min
 Delta R.T.: -0.010 min
 Response: 731392327
 Conc: 272.56 ng/ml



#8 DICHLORPROP

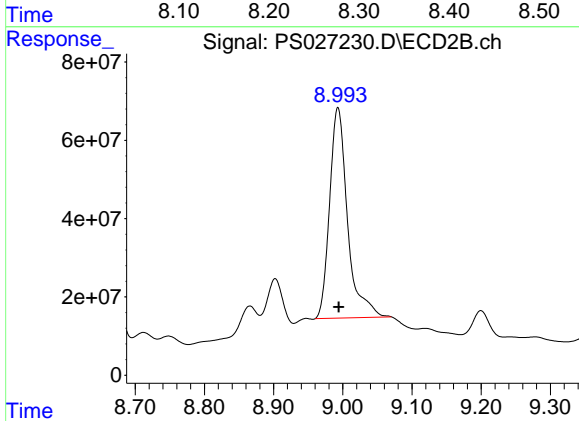
R.T.: 8.663 min
 Delta R.T.: -0.001 min
 Response: 646704648
 Conc: 250.05 ng/ml



#9 2,4-D

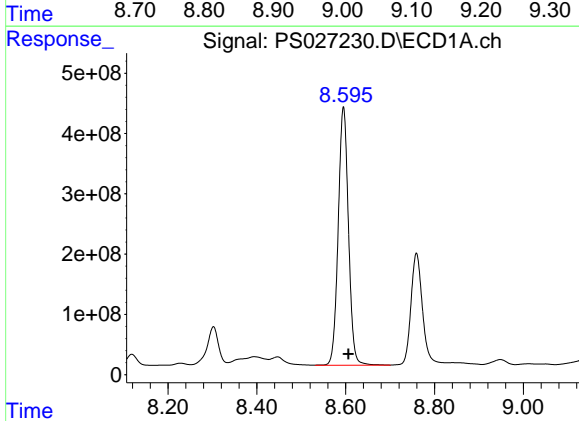
R.T.: 8.302 min
 Delta R.T.: -0.012 min
 Response: 1188663253
 Conc: 413.15 ng/ml

Instrument :
 ECD_S
 ClientSampleId :
 WC-6-Full Waste ClassMSD



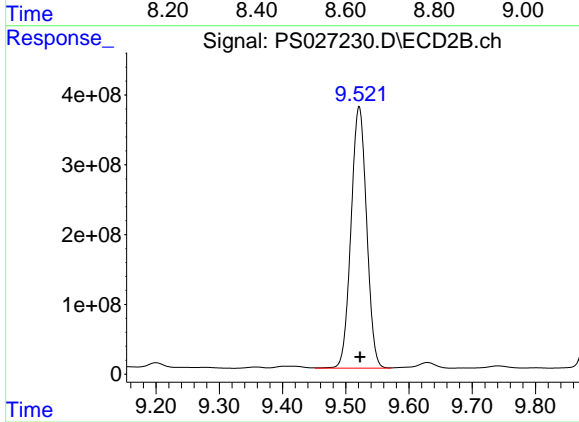
#9 2,4-D

R.T.: 8.993 min
 Delta R.T.: 0.000 min
 Response: 969583459
 Conc: 336.29 ng/ml



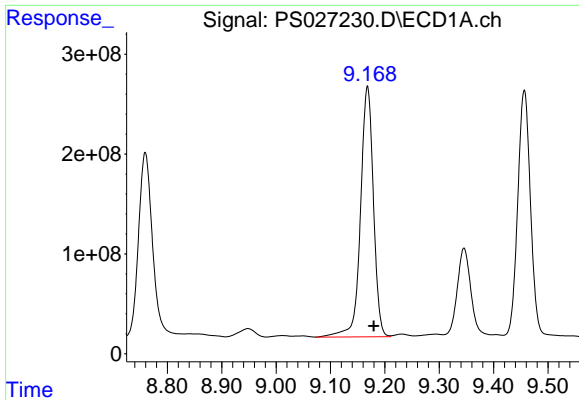
#10 Pentachlorophenol

R.T.: 8.595 min
 Delta R.T.: -0.011 min
 Response: 6864802899
 Conc: 173.74 ng/ml



#10 Pentachlorophenol

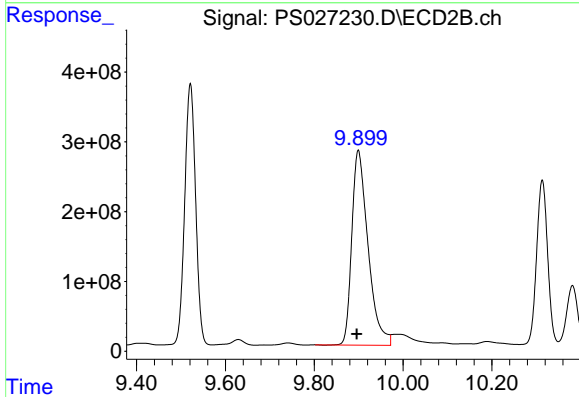
R.T.: 9.521 min
 Delta R.T.: -0.001 min
 Response: 6417968096
 Conc: 164.47 ng/ml



#11 2,4,5-TP (SILVEX)

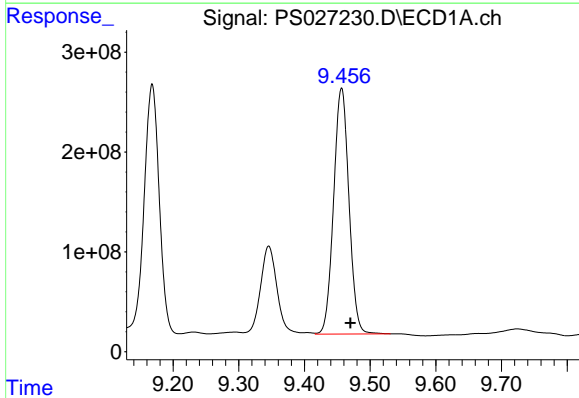
R.T.: 9.168 min
 Delta R.T.: -0.011 min
 Response: 4140579384
 Conc: 273.53 ng/ml

Instrument :
 ECD_S
 ClientSampleId :
 WC-6-Full Waste ClassMSD



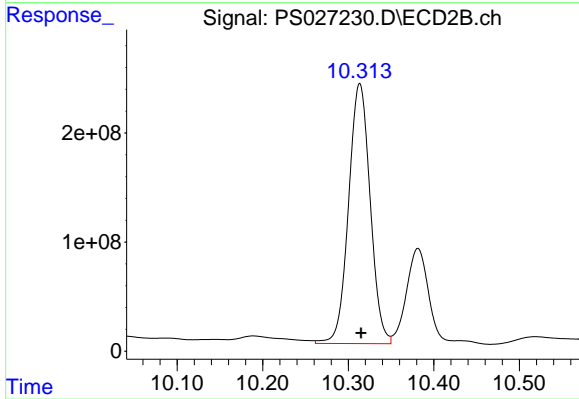
#11 2,4,5-TP (SILVEX)

R.T.: 9.899 min
 Delta R.T.: 0.003 min
 Response: 7090931777
 Conc: 444.66 ng/ml



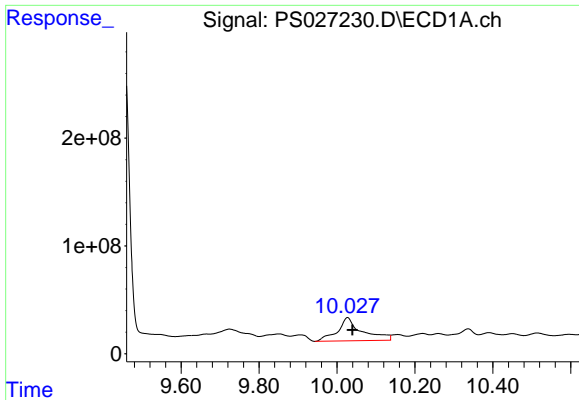
#12 2,4,5-T

R.T.: 9.456 min
 Delta R.T.: -0.013 min
 Response: 3996656970
 Conc: 270.39 ng/ml



#12 2,4,5-T

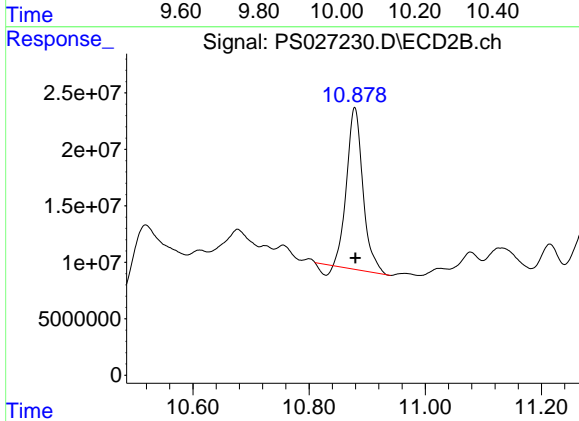
R.T.: 10.313 min
 Delta R.T.: -0.002 min
 Response: 4182896128
 Conc: 261.78 ng/ml



#13 2,4-DB

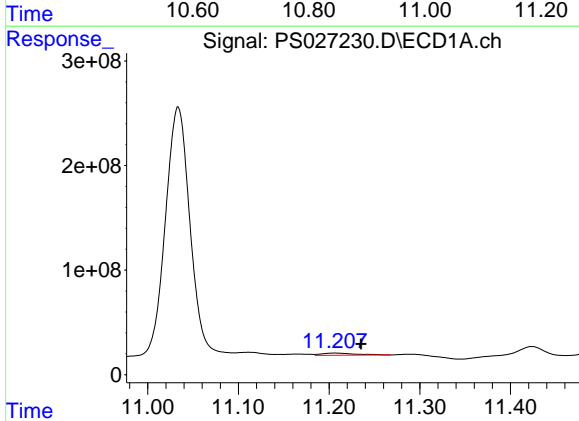
R.T.: 10.027 min
 Delta R.T.: -0.012 min
 Response: 943275157
 Conc: 436.52 ng/ml

Instrument :
 ECD_S
 ClientSampleId :
 WC-6-Full Waste ClassMSD



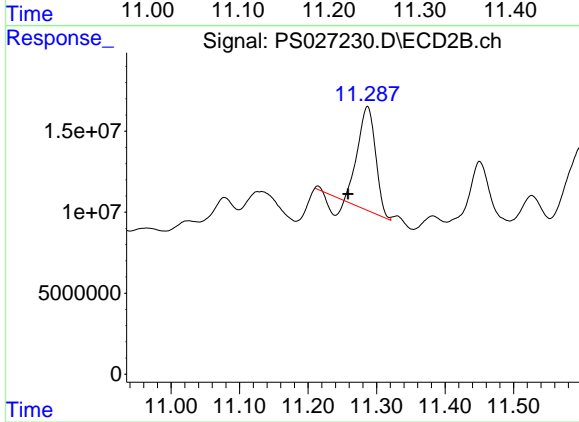
#13 2,4-DB

R.T.: 10.879 min
 Delta R.T.: -0.001 min
 Response: 270260842
 Conc: 133.73 ng/ml



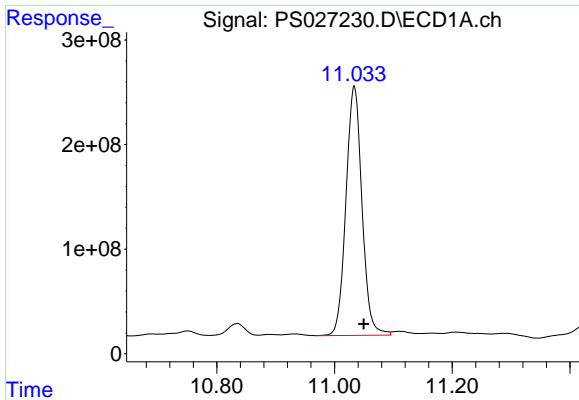
#14 DINOSEB

R.T.: 11.206 min
 Delta R.T.: -0.029 min
 Response: 56632036
 Conc: 5.03 ng/ml



#14 DINOSEB

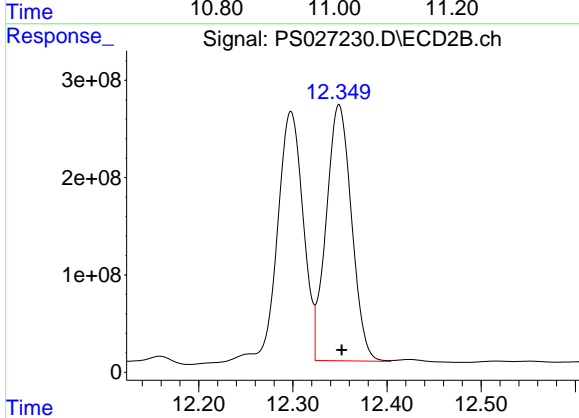
R.T.: 11.287 min
 Delta R.T.: 0.028 min
 Response: 105492221
 Conc: 9.44 ng/ml



#15 Picloram

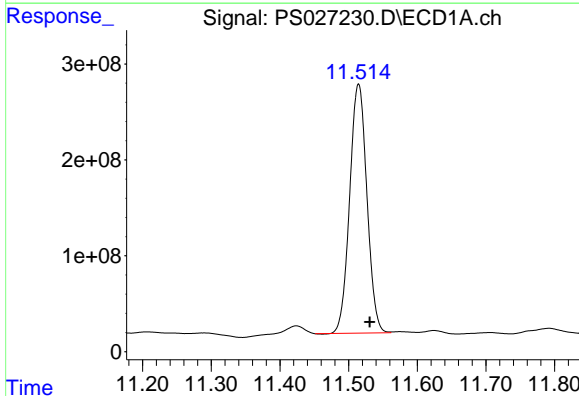
R.T.: 11.034 min
 Delta R.T.: -0.016 min
 Response: 4506727355
 Conc: 231.36 ng/ml

Instrument :
 ECD_S
 ClientSampleId :
 WC-6-Full Waste ClassMSD



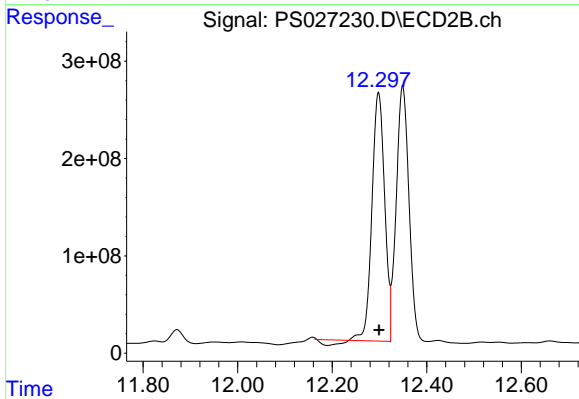
#15 Picloram

R.T.: 12.349 min
 Delta R.T.: -0.003 min
 Response: 4923285160
 Conc: 210.56 ng/ml



#16 DCPA

R.T.: 11.514 min
 Delta R.T.: -0.016 min
 Response: 4531820400
 Conc: 252.43 ng/ml



#16 DCPA

R.T.: 12.298 min
 Delta R.T.: 0.000 min
 Response: 4668708471
 Conc: 266.88 ng/ml