

Data Path : Z:\pestpcbsrv\HPCHEM1\ECD\_S\Data\PS072924\  
 Data File : PS027236CC-2.D  
 Signal(s) : Signal #1: ECD1A.ch Signal #2: ECD2B.ch  
 Acq On : 29 Jul 2024 21:49  
 Operator : AR\AJ  
 Sample : HSTDCCC750  
 Misc :  
 ALS Vial : 3 Sample Multiplier: 1

Instrument :  
 ECD\_S  
 ClientSampleId :

Integration File signal 1: autoint1.e  
 Integration File signal 2: autoint2.e  
 Quant Time: Jul 30 02:01:56 2024  
 Quant Method : Z:\pestpcbsrv\HPCHEM1\ECD\_S\Method\PS071224.M  
 Quant Title : 8080.M  
 QLast Update : Thu Jun 27 04:33:52 2024  
 Response via : Initial Calibration  
 Integrator: ChemStation

Volume Inj. : 1 µl  
 Signal #1 Phase : ZB-MR1 Signal #2 Phase: ZB-MR2  
 Signal #1 Info : 30M x 0.32mm x0.5 Signal #2 Info : 30M x 0.32mm x 0.25µm

	Compound	RT#1	RT#2	Resp#1	Resp#2	ng/ml	ng/ml
-----							
System Monitoring Compounds							
4) S	2,4-DCAA	7.195	7.751	1905.9E6	1639.1E6	753.705	706.880
Target Compounds							
1) T	Dalapon	2.614	2.702	2228.7E6	2669.7E6	670.365	643.279
2) T	3,5-DICHL...	6.373	6.705	2777.3E6	2242.1E6	702.267	661.051
3) T	4-Nitroph...	6.995	7.280	1125.5E6	1086.7E6	702.028	657.165
5) T	DICAMBA	7.379	7.951	7673.9E6	7250.8E6	698.437	688.156
6) T	MCPD	7.558	8.052	538.6E6	513.9E6	70.161	66.335
7) T	MCPA	7.705	8.296	704.2E6	678.7E6	69.106	64.831
8) T	DICHLORPROP	8.074	8.663	1882.6E6	1738.5E6	701.580	672.199
9) T	2,4-D	8.302	8.993	2071.2E6	1956.3E6	719.909	678.504
10) T	Pentachlo...	8.594	9.521	28826.2E6	28123.7E6	729.573	720.719
11) T	2,4,5-TP ...	9.167	9.894	10943.6E6	11202.2E6	722.952	702.469
12) T	2,4,5-T	9.455	10.314	10861.5E6	11287.1E6	734.836	706.383
13) T	2,4-DB	10.024	10.878	1595.4E6	1378.0E6	738.308	681.834
14) T	DINOSEB	11.218	11.257	8127.3E6	7989.1E6	721.629	715.104
15) T	Picloram	11.032	12.349	14771.4E6	17313.9E6	758.323	740.479
16) T	DCPA	11.514	12.297	13199.4E6	12515.4E6	735.226	715.419

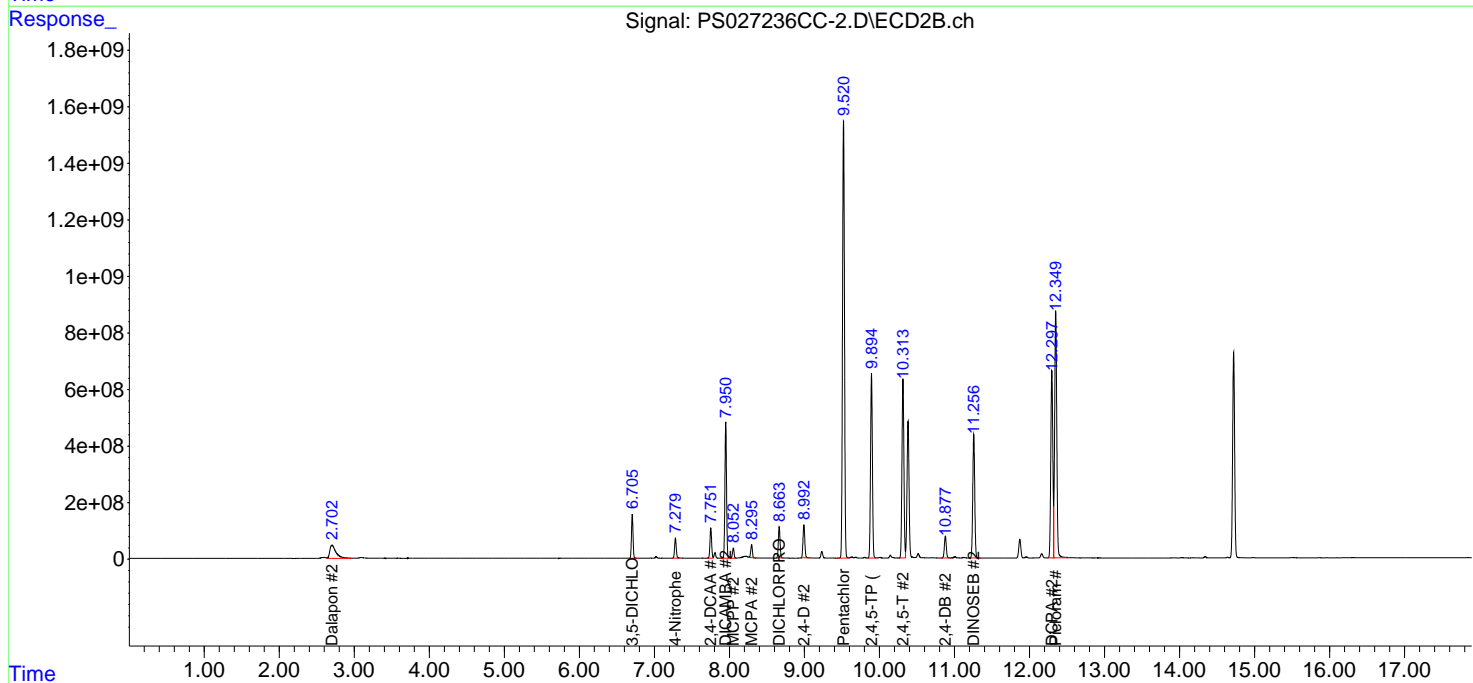
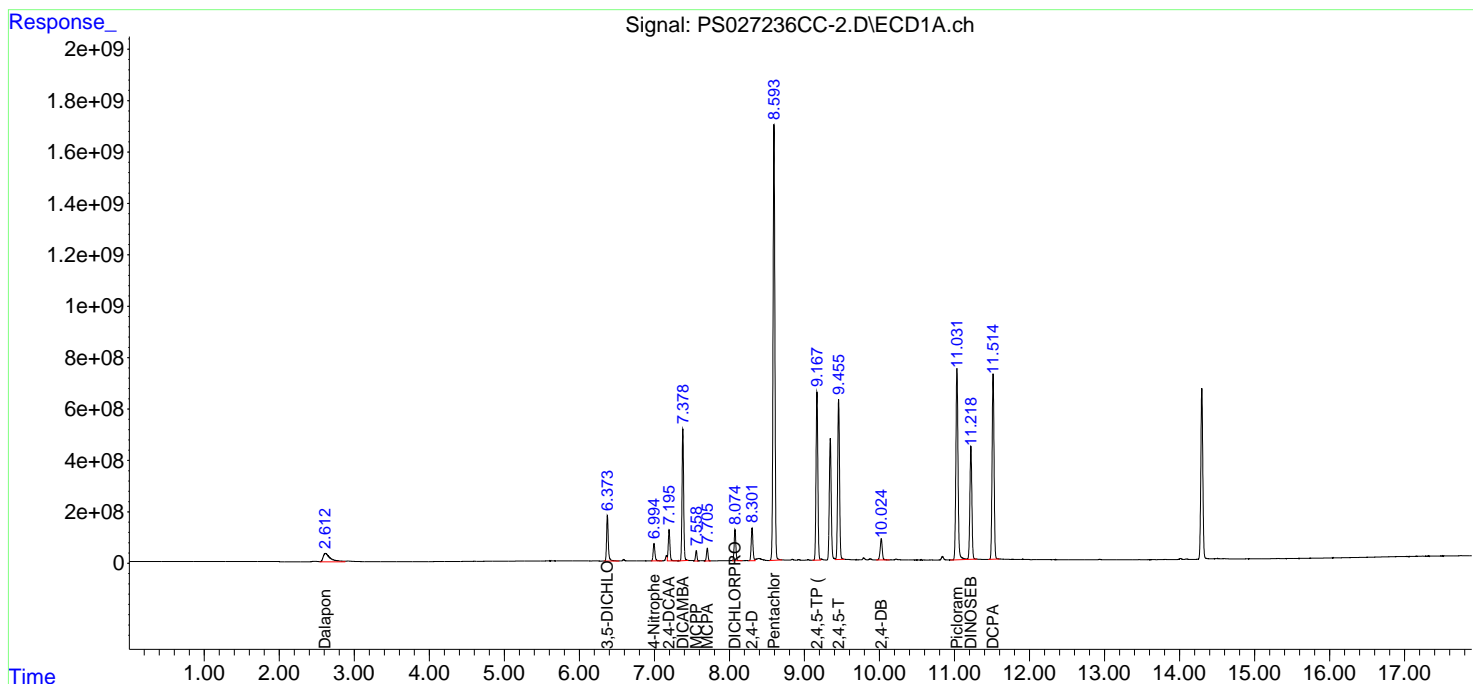
(f)=RT Delta > 1/2 Window (#)=Amounts differ by > 25% (m)=manual int.

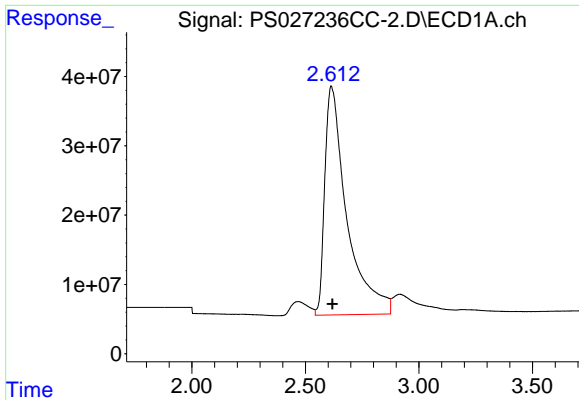
Data Path : Z:\pestpcbsrv\HPCHEM1\ECD\_S\Data\PS072924\  
 Data File : PS027236CC-2.D  
 Signal(s) : Signal #1: ECD1A.ch Signal #2: ECD2B.ch  
 Acq On : 29 Jul 2024 21:49  
 Operator : AR\AJ  
 Sample : HSTDCCC750  
 Misc :  
 ALS Vial : 3 Sample Multiplier: 1

Instrument :  
 ECD\_S  
 ClientSampleId :

Integration File signal 1: autoint1.e  
 Integration File signal 2: autoint2.e  
 Quant Time: Jul 30 02:01:56 2024  
 Quant Method : Z:\pestpcbsrv\HPCHEM1\ECD\_S\Method\PS071224.M  
 Quant Title : 8080.M  
 QLast Update : Thu Jun 27 04:33:52 2024  
 Response via : Initial Calibration  
 Integrator: ChemStation

Volume Inj. : 1 µl  
 Signal #1 Phase : ZB-MR1 Signal #2 Phase: ZB-MR2  
 Signal #1 Info : 30M x 0.32mm x0.5 Signal #2 Info : 30M x 0.32mm x 0.25µm

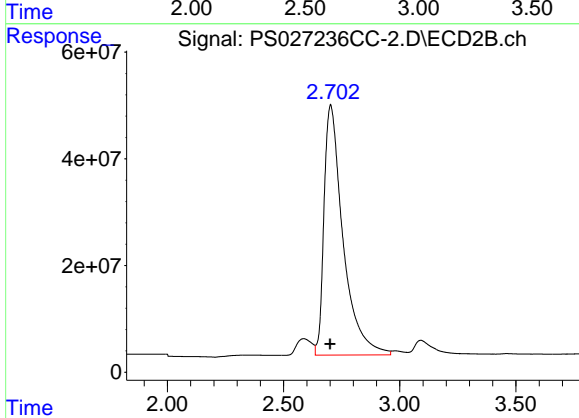




#1 Dalapon

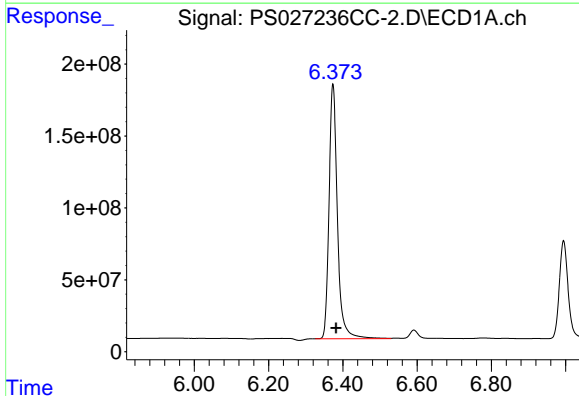
R.T.: 2.614 min  
 Delta R.T.: -0.005 min  
 Response: 2228691966  
 Conc: 670.36 ng/ml

Instrument :  
 ECD\_S  
 ClientSampleId :



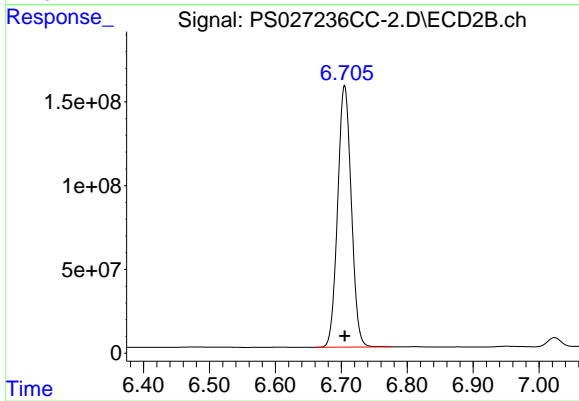
#1 Dalapon

R.T.: 2.702 min  
 Delta R.T.: 0.002 min  
 Response: 2669677668  
 Conc: 643.28 ng/ml



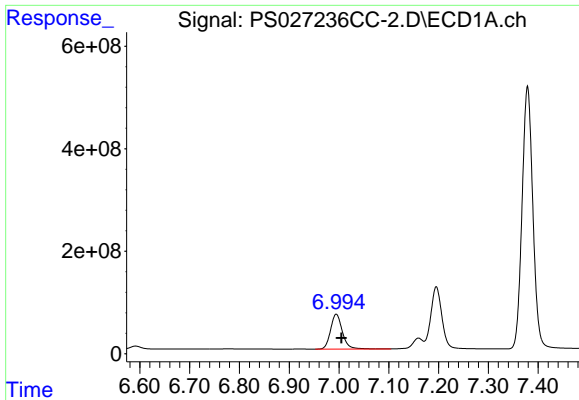
#2 3,5-DICHLOROBENZOIC ACID

R.T.: 6.373 min  
 Delta R.T.: -0.008 min  
 Response: 2777260597  
 Conc: 702.27 ng/ml



#2 3,5-DICHLOROBENZOIC ACID

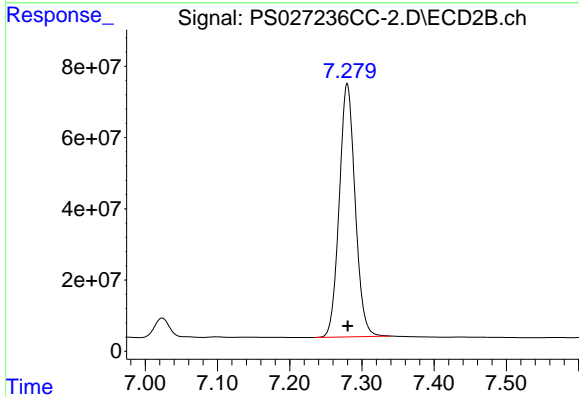
R.T.: 6.705 min  
 Delta R.T.: 0.000 min  
 Response: 2242095392  
 Conc: 661.05 ng/ml



#3 4-Nitrophenol

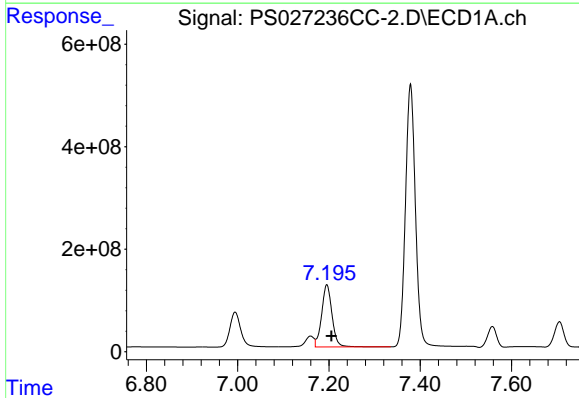
R.T.: 6.995 min  
 Delta R.T.: -0.010 min  
 Response: 1125453250  
 Conc: 702.03 ng/ml

Instrument :  
 ECD\_S  
 ClientSampleId :



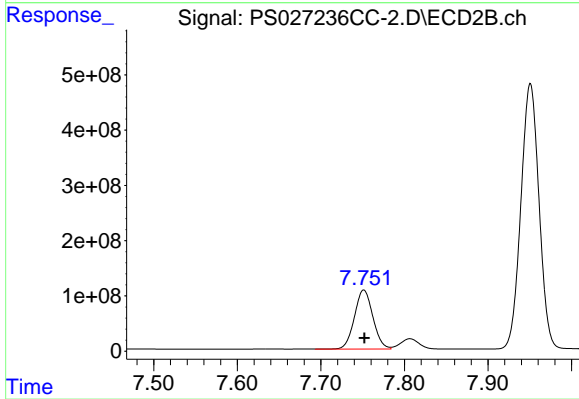
#3 4-Nitrophenol

R.T.: 7.280 min  
 Delta R.T.: 0.000 min  
 Response: 1086664105  
 Conc: 657.16 ng/ml



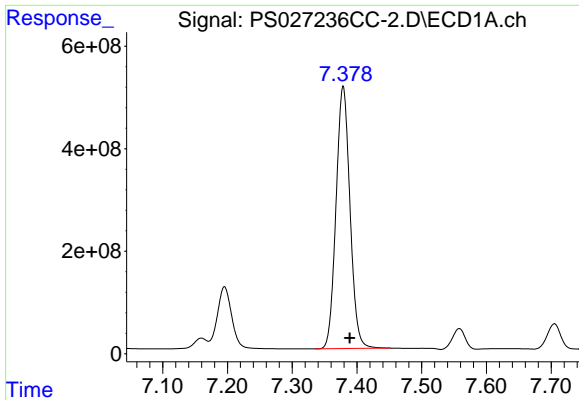
#4 2,4-DCAA

R.T.: 7.195 min  
 Delta R.T.: -0.010 min  
 Response: 1905942365  
 Conc: 753.71 ng/ml



#4 2,4-DCAA

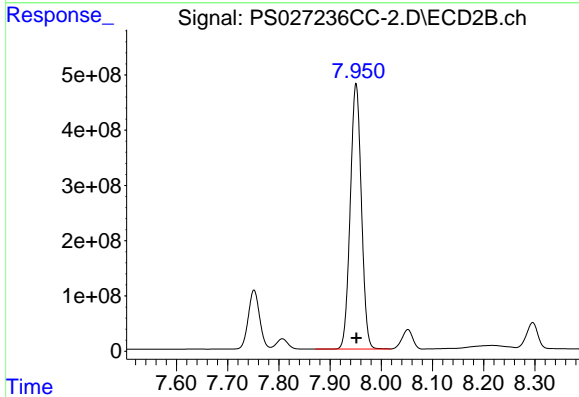
R.T.: 7.751 min  
 Delta R.T.: 0.000 min  
 Response: 1639060307  
 Conc: 706.88 ng/ml



#5 DICAMBA

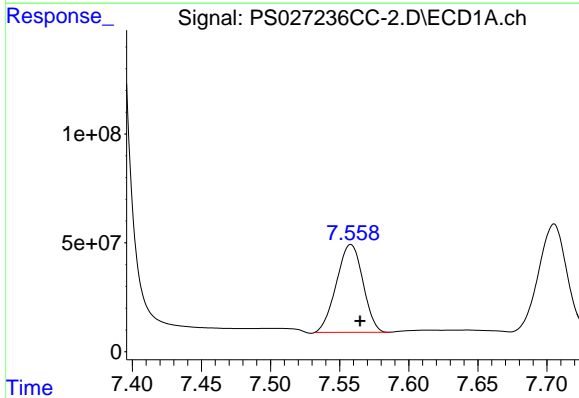
R.T.: 7.379 min  
 Delta R.T.: -0.010 min  
 Response: 7673929746  
 Conc: 698.44 ng/ml

Instrument :  
 ECD\_S  
 ClientSampleId :



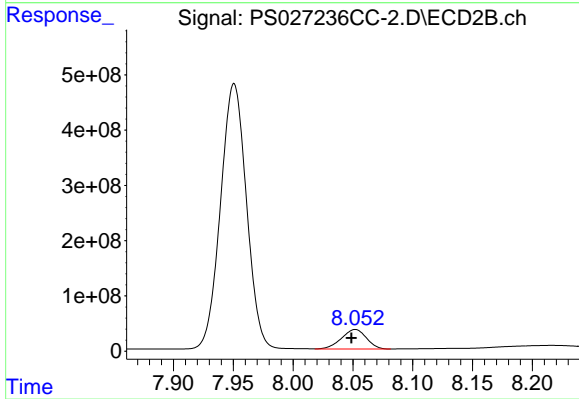
#5 DICAMBA

R.T.: 7.951 min  
 Delta R.T.: 0.000 min  
 Response: 7250760059  
 Conc: 688.16 ng/ml



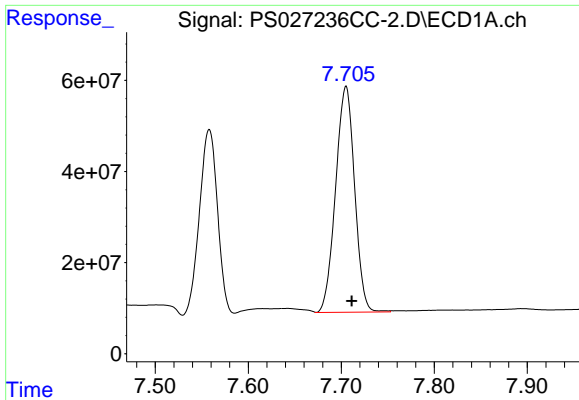
#6 MCP

R.T.: 7.558 min  
 Delta R.T.: -0.007 min  
 Response: 538567486  
 Conc: 70.16 ug/ml



#6 MCP

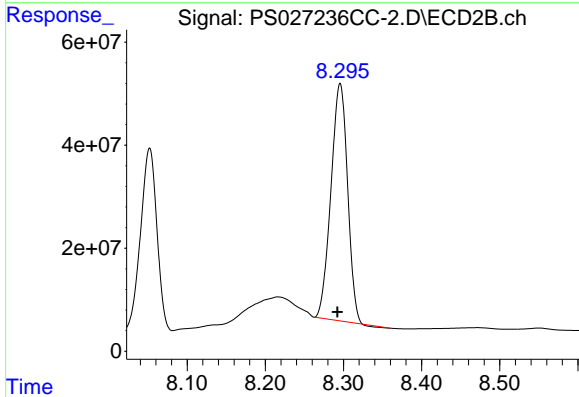
R.T.: 8.052 min  
 Delta R.T.: 0.003 min  
 Response: 513875133  
 Conc: 66.34 ug/ml



#7 MCPA

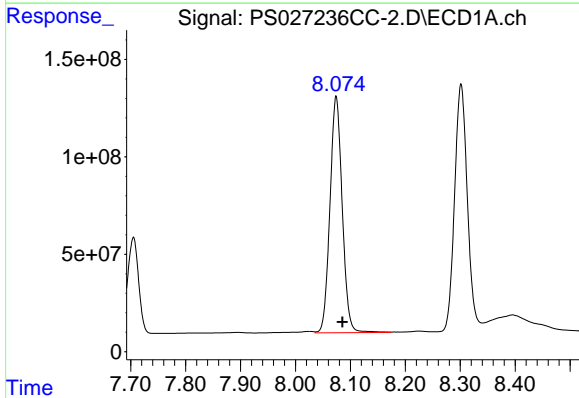
R.T.: 7.705 min  
 Delta R.T.: -0.006 min  
 Response: 704198228  
 Conc: 69.11 ug/ml

Instrument :  
 ECD\_S  
 ClientSampleId :



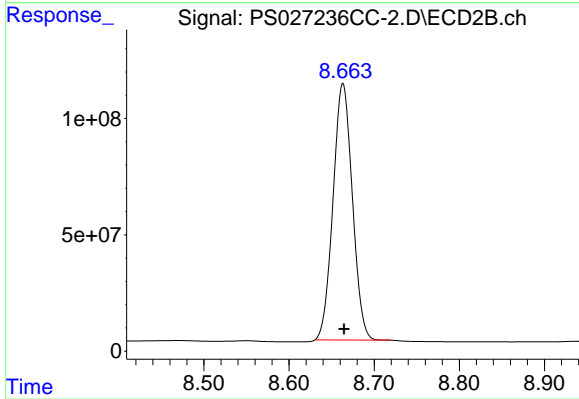
#7 MCPA

R.T.: 8.296 min  
 Delta R.T.: 0.004 min  
 Response: 678708419  
 Conc: 64.83 ug/ml



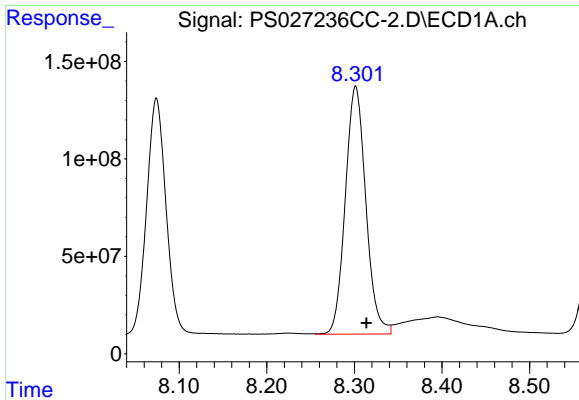
#8 DICHLORPROP

R.T.: 8.074 min  
 Delta R.T.: -0.011 min  
 Response: 1882611291  
 Conc: 701.58 ng/ml



#8 DICHLORPROP

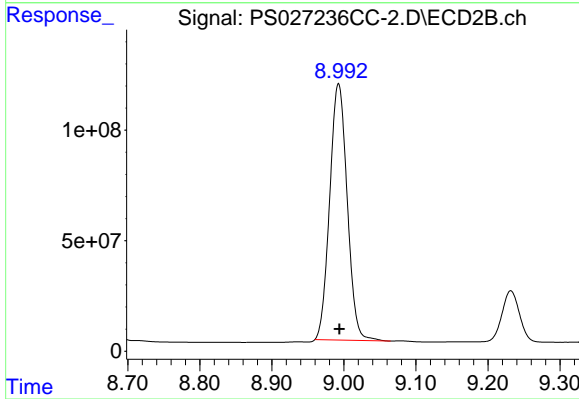
R.T.: 8.663 min  
 Delta R.T.: -0.001 min  
 Response: 1738485873  
 Conc: 672.20 ng/ml



#9 2,4-D

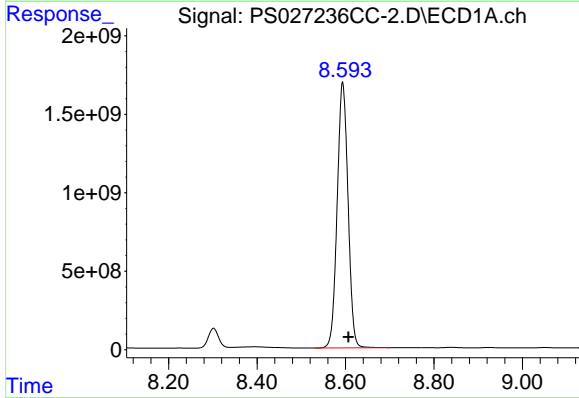
R.T.: 8.302 min  
 Delta R.T.: -0.012 min  
 Response: 2071245845  
 Conc: 719.91 ng/ml

Instrument :  
 ECD\_S  
 ClientSampleId :



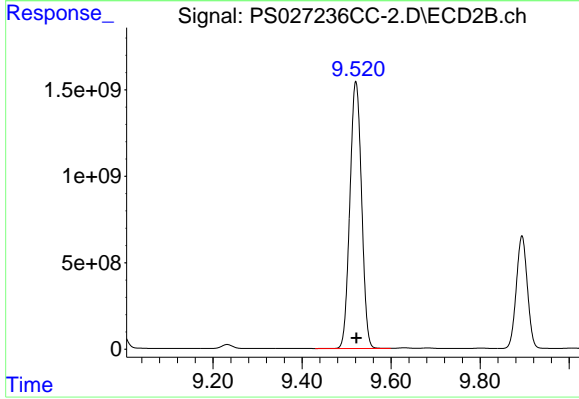
#9 2,4-D

R.T.: 8.993 min  
 Delta R.T.: -0.001 min  
 Response: 1956263211  
 Conc: 678.50 ng/ml



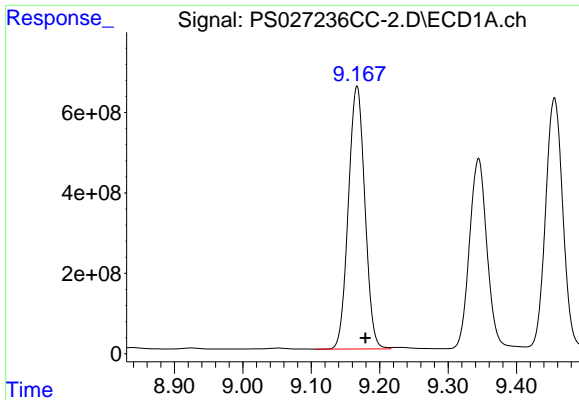
#10 Pentachlorophenol

R.T.: 8.594 min  
 Delta R.T.: -0.013 min  
 Response: 28826169785  
 Conc: 729.57 ng/ml



#10 Pentachlorophenol

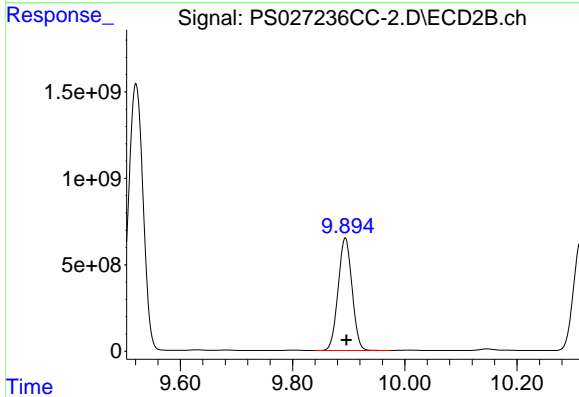
R.T.: 9.521 min  
 Delta R.T.: -0.002 min  
 Response: 28123704447  
 Conc: 720.72 ng/ml



#11 2,4,5-TP (SILVEX)

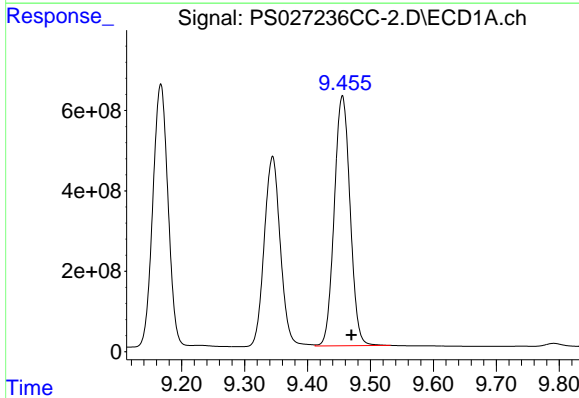
R.T.: 9.167 min  
 Delta R.T.: -0.013 min  
 Response: 10943618449  
 Conc: 722.95 ng/ml

Instrument :  
 ECD\_S  
 ClientSampleId :



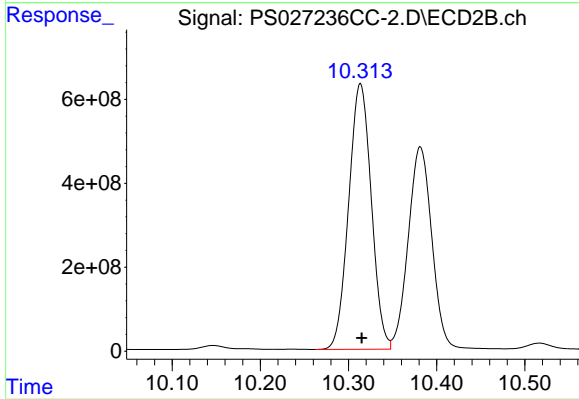
#11 2,4,5-TP (SILVEX)

R.T.: 9.894 min  
 Delta R.T.: -0.002 min  
 Response: 11202176737  
 Conc: 702.47 ng/ml



#12 2,4,5-T

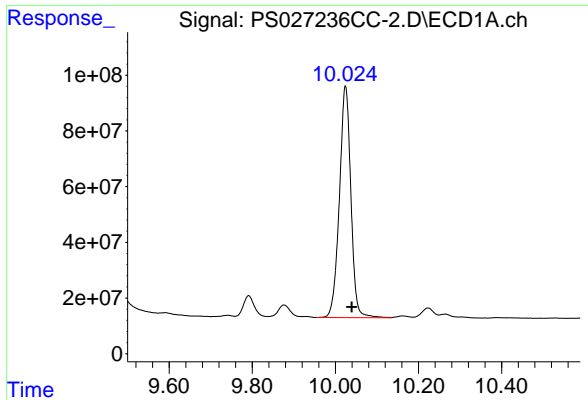
R.T.: 9.455 min  
 Delta R.T.: -0.014 min  
 Response: 10861542128  
 Conc: 734.84 ng/ml



#12 2,4,5-T

R.T.: 10.314 min  
 Delta R.T.: -0.002 min  
 Response: 11287084327  
 Conc: 706.38 ng/ml

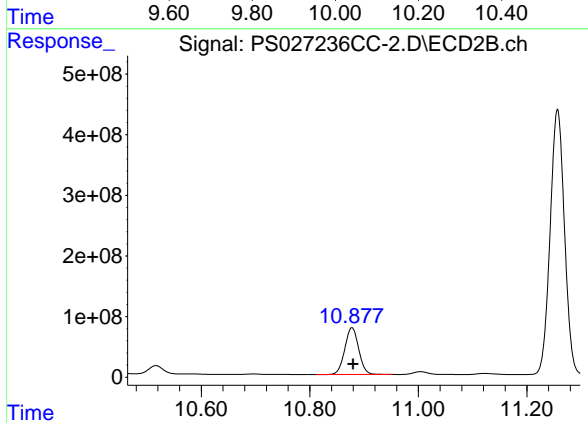




#13 2,4-DB

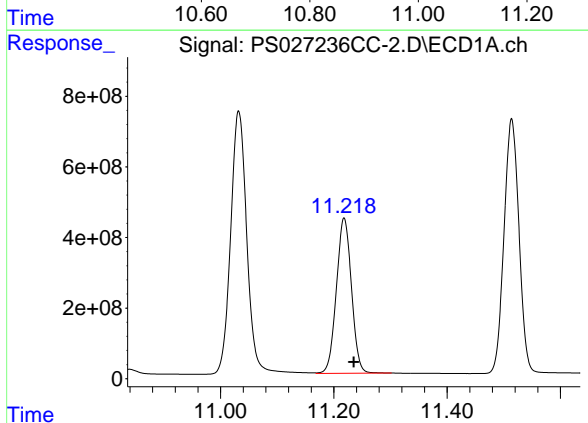
R.T.: 10.024 min  
 Delta R.T.: -0.015 min  
 Response: 1595406103  
 Conc: 738.31 ng/ml

Instrument :  
 ECD\_S  
 ClientSampleId :



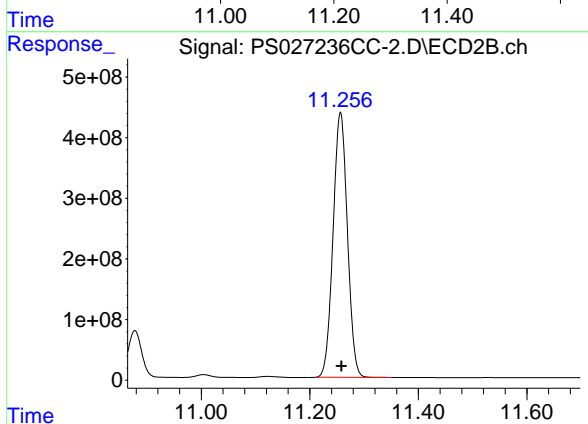
#13 2,4-DB

R.T.: 10.878 min  
 Delta R.T.: -0.002 min  
 Response: 1377962235  
 Conc: 681.83 ng/ml



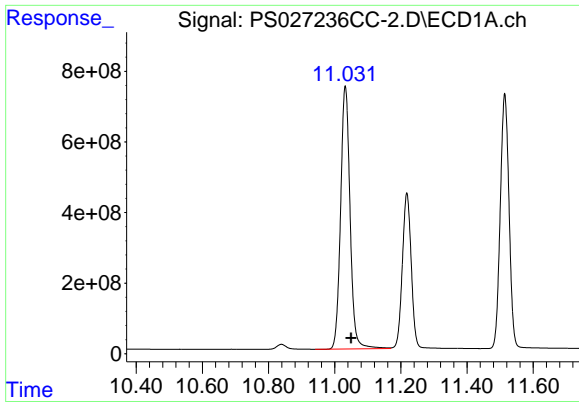
#14 DINOSEB

R.T.: 11.218 min  
 Delta R.T.: -0.017 min  
 Response: 8127316003  
 Conc: 721.63 ng/ml



#14 DINOSEB

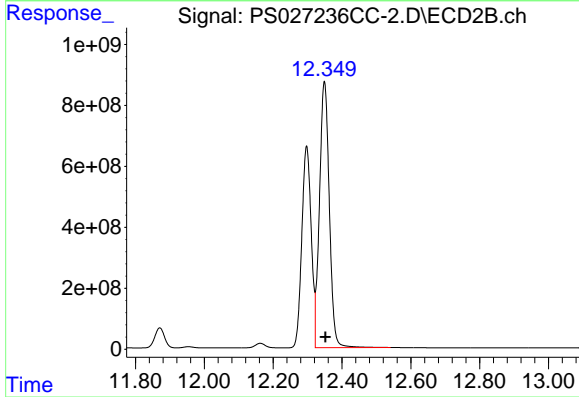
R.T.: 11.257 min  
 Delta R.T.: -0.002 min  
 Response: 7989065349  
 Conc: 715.10 ng/ml



#15 Picloram

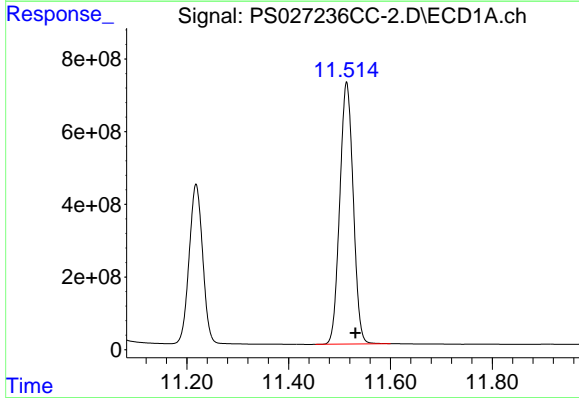
R.T.: 11.032 min  
 Delta R.T.: -0.017 min  
 Response: 14771426661  
 Conc: 758.32 ng/ml

Instrument :  
 ECD\_S  
 ClientSampleId :



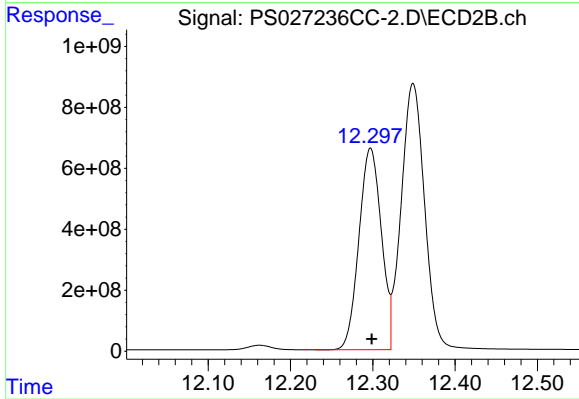
#15 Picloram

R.T.: 12.349 min  
 Delta R.T.: -0.003 min  
 Response: 17313917485  
 Conc: 740.48 ng/ml



#16 DCPA

R.T.: 11.514 min  
 Delta R.T.: -0.017 min  
 Response: 13199380882  
 Conc: 735.23 ng/ml



#16 DCPA

R.T.: 12.297 min  
 Delta R.T.: -0.002 min  
 Response: 12515429733  
 Conc: 715.42 ng/ml