

Data Path : Z:\pestpcbsrv\HPCHEM1\ECD_S\Data\PS072924\
 Data File : PS027236.D
 Signal(s) : Signal #1: ECD1A.ch Signal #2: ECD2B.ch
 Acq On : 29 Jul 2024 21:00
 Operator : AR\AJ
 Sample : HSTDCCC750
 Misc :
 ALS Vial : 3 Sample Multiplier: 1

Instrument :
 ECD_S
 ClientSampleId :
 HSTDCCC750

Integration File signal 1: autoint1.e
 Integration File signal 2: autoint2.e
 Quant Time: Jul 30 02:01:13 2024
 Quant Method : Z:\pestpcbsrv\HPCHEM1\ECD_S\Method\PS071224.M
 Quant Title : 8080.M
 QLast Update : Thu Jun 27 04:33:52 2024
 Response via : Initial Calibration
 Integrator: ChemStation

Volume Inj. : 1 µl
 Signal #1 Phase : ZB-MR1 Signal #2 Phase: ZB-MR2
 Signal #1 Info : 30M x 0.32mm x0.5 Signal #2 Info : 30M x 0.32mm x 0.25µm

Compound	RT#1	RT#2	Resp#1	Resp#2	ng/ml	ng/ml

System Monitoring Compounds						
4) S 2,4-DCAA	7.196	7.752	1894.9E6	1629.5E6	749.344	702.761
Target Compounds						
1) T Dalapon	2.613	2.699	2182.2E6	2741.6E6	656.374	660.605
2) T 3,5-DICHL...	6.373	6.705	2764.5E6	2223.8E6	699.051	655.647
3) T 4-Nitroph...	6.995	7.280	1124.5E6	1083.3E6	701.410	655.104
5) T DICAMBA	7.379	7.951	7624.3E6	7223.9E6	693.917	685.609
6) T MCPP	7.558	8.052	542.8E6	509.4E6	70.713	65.756
7) T MCPA	7.705	8.296	710.4E6	673.8E6	69.717	64.361
8) T DICHLORPROP	8.075	8.664	1868.8E6	1728.5E6	696.434	668.338
9) T 2,4-D	8.302	8.993	2055.8E6	1942.1E6	714.555	673.589
10) T Pentachlo...	8.594	9.522	28640.7E6	27768.0E6	724.878	711.602
11) T 2,4,5-TP ...	9.167	9.895	10877.7E6	11101.8E6	718.598	696.173
12) T 2,4,5-T	9.456	10.314	10777.2E6	11097.6E6	729.132	694.522
13) T 2,4-DB	10.024	10.878	1583.3E6	1362.6E6	732.695	674.245
14) T DINOSEB	11.219	11.257	8089.4E6	7883.0E6	718.260	705.607
15) T Picloram	11.032	12.349	14591.4E6	16926.9E6	749.081	723.929
16) T DCPA	11.514	12.298	13132.6E6	12320.6E6	731.504	704.280

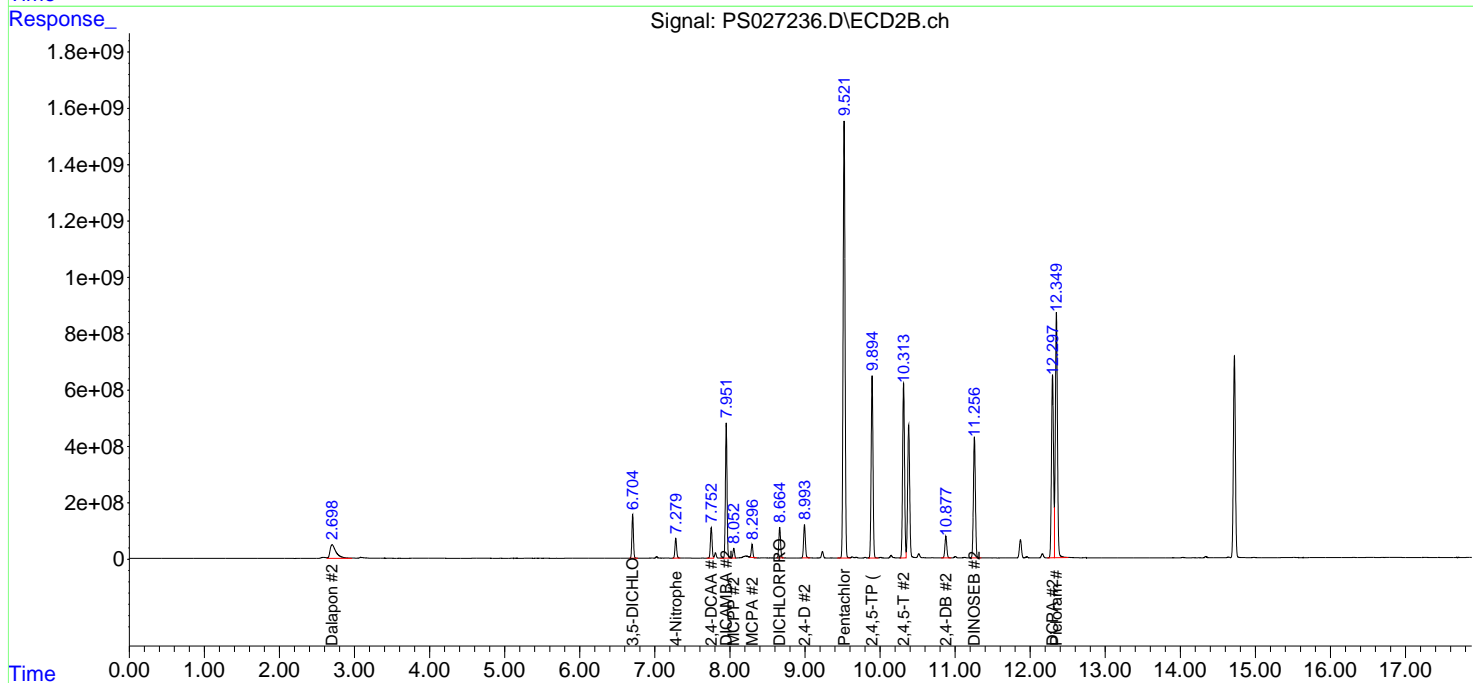
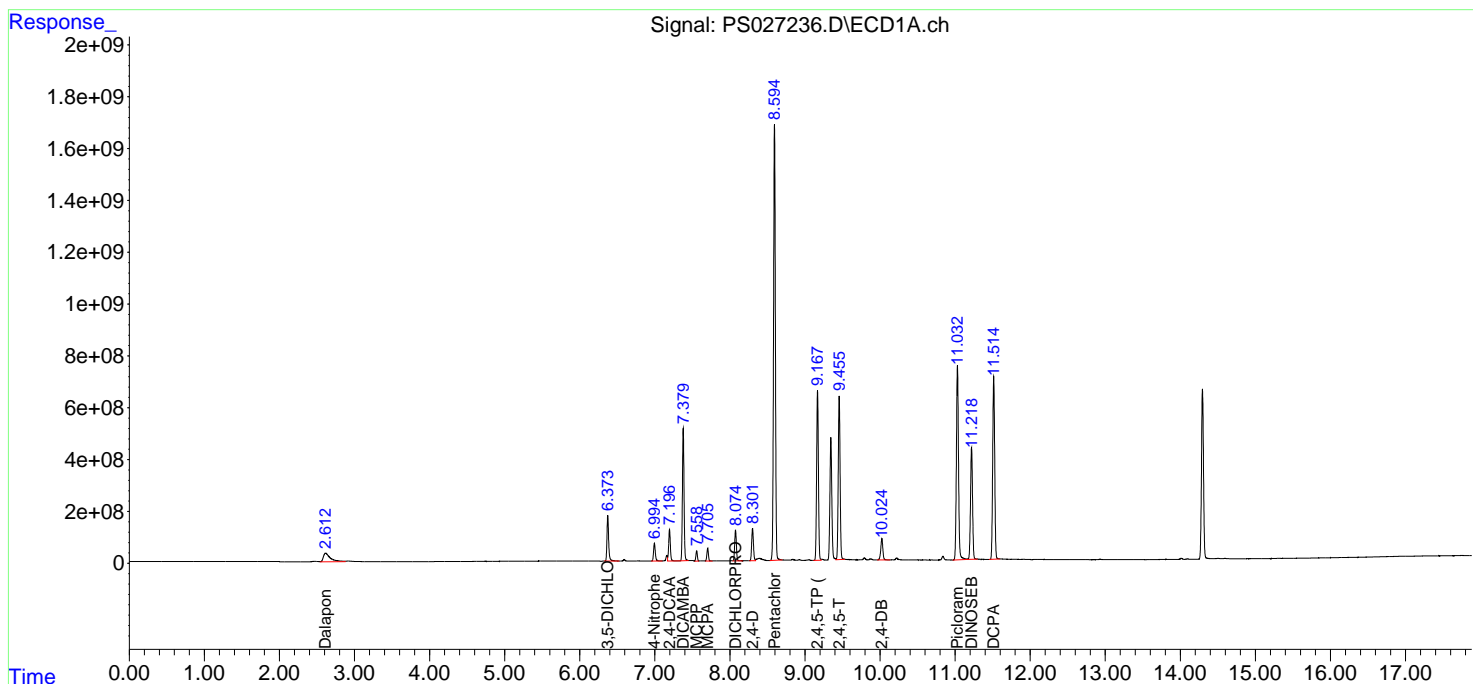
(f)=RT Delta > 1/2 Window (#)=Amounts differ by > 25% (m)=manual int.

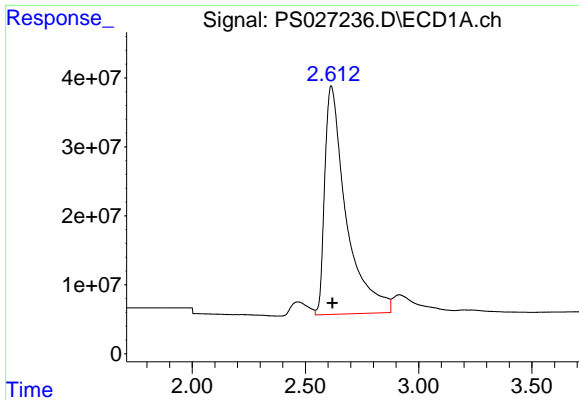
Data Path : Z:\pestpcbsrv\HPCHEM1\ECD_S\Data\PS072924\
 Data File : PS027236.D
 Signal(s) : Signal #1: ECD1A.ch Signal #2: ECD2B.ch
 Acq On : 29 Jul 2024 21:00
 Operator : AR\AJ
 Sample : HSTDCCC750
 Misc :
 ALS Vial : 3 Sample Multiplier: 1

Instrument :
 ECD_S
 ClientSampleId :
 HSTDCCC750

Integration File signal 1: autoint1.e
 Integration File signal 2: autoint2.e
 Quant Time: Jul 30 02:01:13 2024
 Quant Method : Z:\pestpcbsrv\HPCHEM1\ECD_S\Method\PS071224.M
 Quant Title : 8080.M
 QLast Update : Thu Jun 27 04:33:52 2024
 Response via : Initial Calibration
 Integrator: ChemStation

Volume Inj. : 1 µl
 Signal #1 Phase : ZB-MR1 Signal #2 Phase: ZB-MR2
 Signal #1 Info : 30M x 0.32mm x0.5 Signal #2 Info : 30M x 0.32mm x 0.25µm

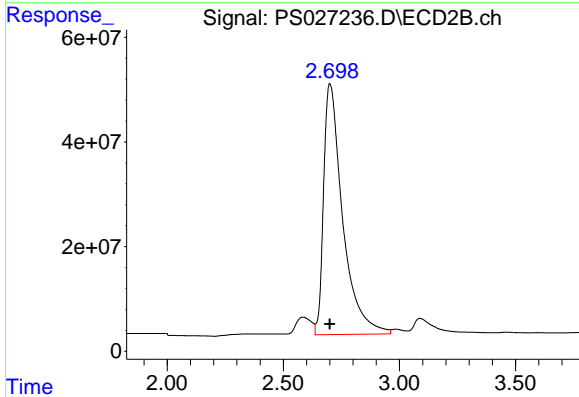




#1 Dalapon

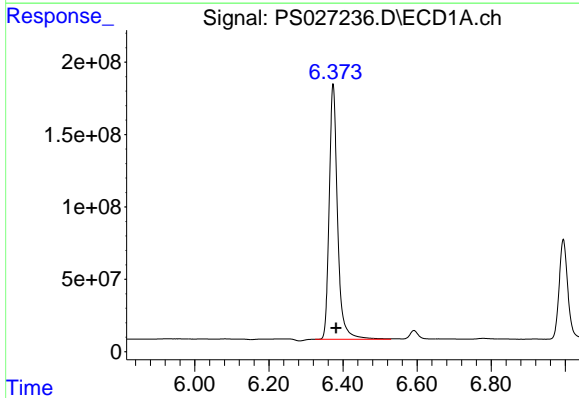
R.T.: 2.613 min
 Delta R.T.: -0.006 min
 Response: 2182177090
 Conc: 656.37 ng/ml

Instrument :
 ECD_S
 ClientSampleId :
 HSTDCCC750



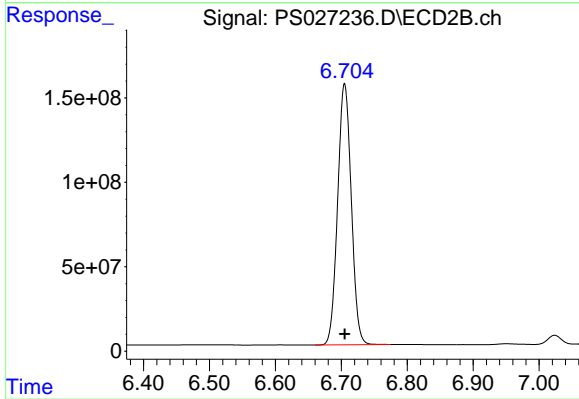
#1 Dalapon

R.T.: 2.699 min
 Delta R.T.: -0.002 min
 Response: 2741582618
 Conc: 660.60 ng/ml



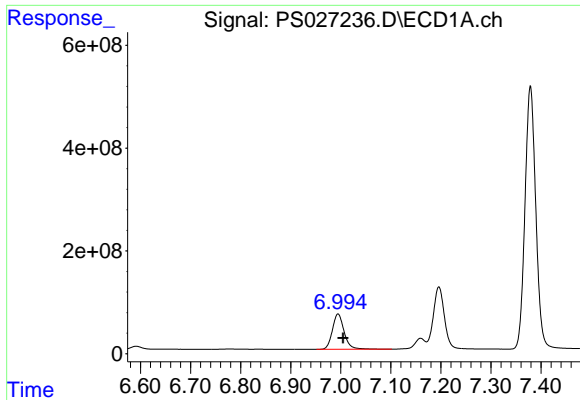
#2 3,5-DICHLOROBENZOIC ACID

R.T.: 6.373 min
 Delta R.T.: -0.008 min
 Response: 2764541539
 Conc: 699.05 ng/ml



#2 3,5-DICHLOROBENZOIC ACID

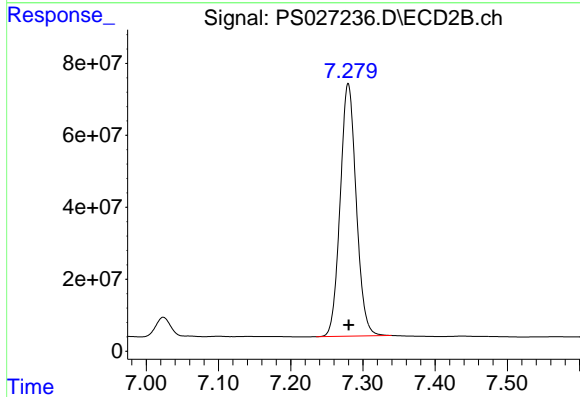
R.T.: 6.705 min
 Delta R.T.: 0.000 min
 Response: 2223768791
 Conc: 655.65 ng/ml



#3 4-Nitrophenol

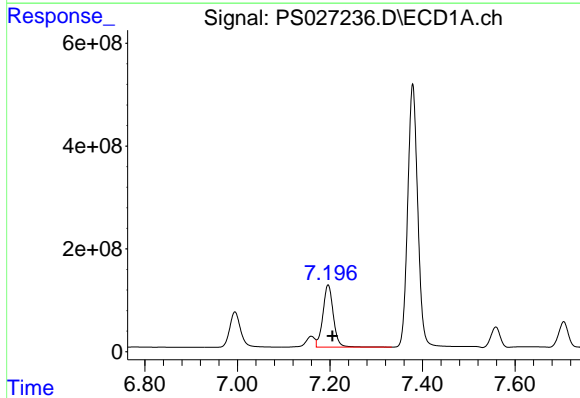
R.T.: 6.995 min
 Delta R.T.: -0.010 min
 Response: 1124463583
 Conc: 701.41 ng/ml

Instrument :
 ECD_S
 ClientSampleId :
 HSTDCCC750



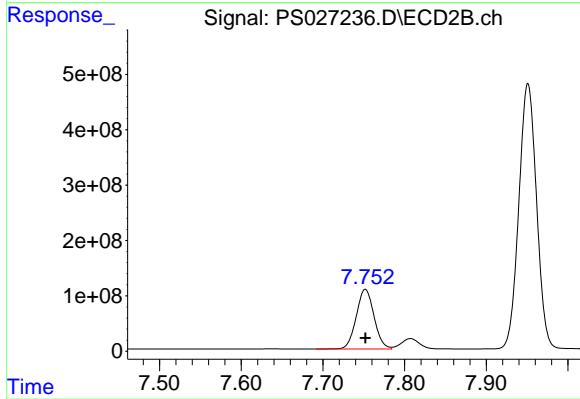
#3 4-Nitrophenol

R.T.: 7.280 min
 Delta R.T.: 0.000 min
 Response: 1083255890
 Conc: 655.10 ng/ml



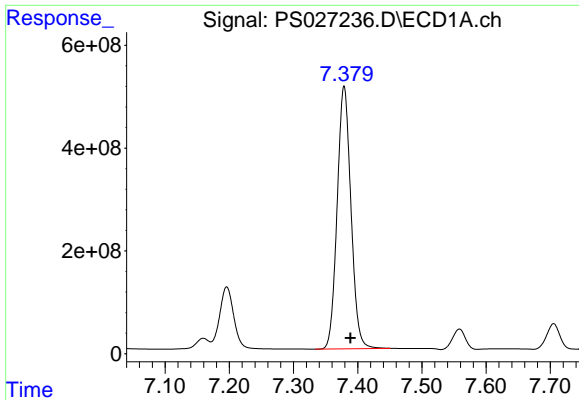
#4 2,4-DCAA

R.T.: 7.196 min
 Delta R.T.: -0.009 min
 Response: 1894914182
 Conc: 749.34 ng/ml



#4 2,4-DCAA

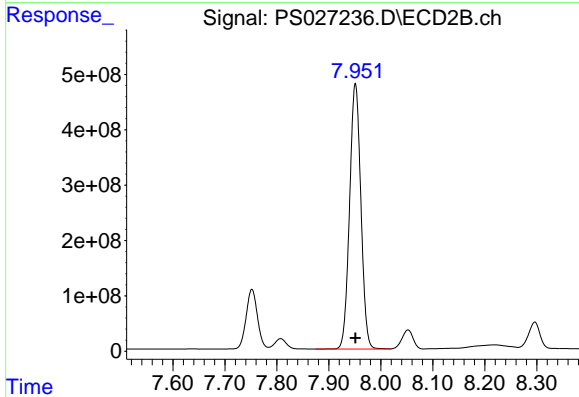
R.T.: 7.752 min
 Delta R.T.: 0.000 min
 Response: 1629507813
 Conc: 702.76 ng/ml



#5 DICAMBA

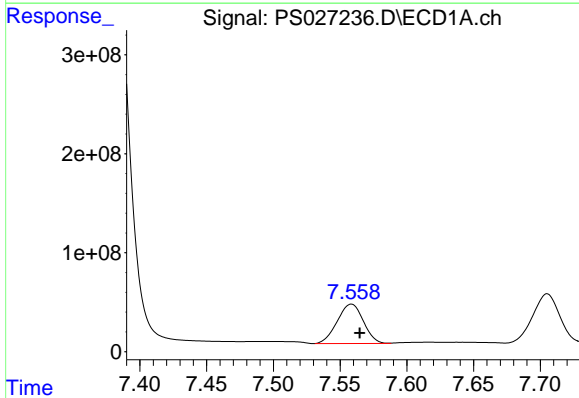
R.T.: 7.379 min
 Delta R.T.: -0.010 min
 Response: 7624272214
 Conc: 693.92 ng/ml

Instrument :
 ECD_S
 ClientSampleId :
 HSTDCCC750



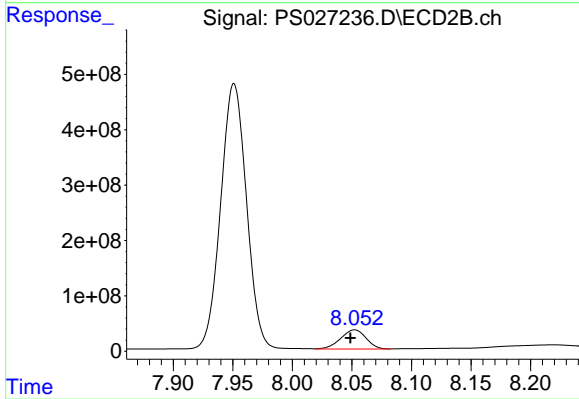
#5 DICAMBA

R.T.: 7.951 min
 Delta R.T.: 0.000 min
 Response: 7223931481
 Conc: 685.61 ng/ml



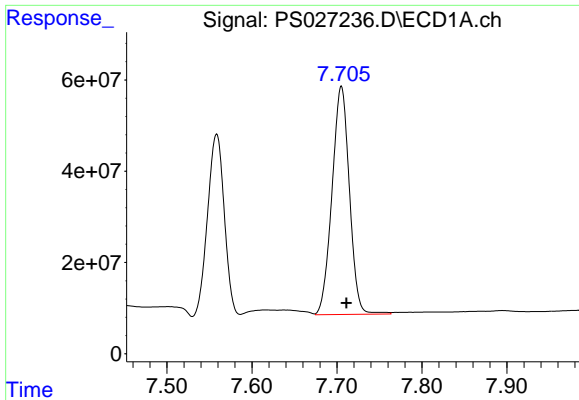
#6 MCP

R.T.: 7.558 min
 Delta R.T.: -0.006 min
 Response: 542803397
 Conc: 70.71 ug/ml



#6 MCP

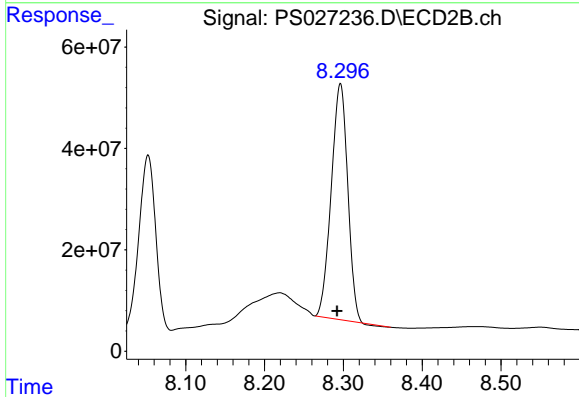
R.T.: 8.052 min
 Delta R.T.: 0.004 min
 Response: 509387881
 Conc: 65.76 ug/ml



#7 MCPA

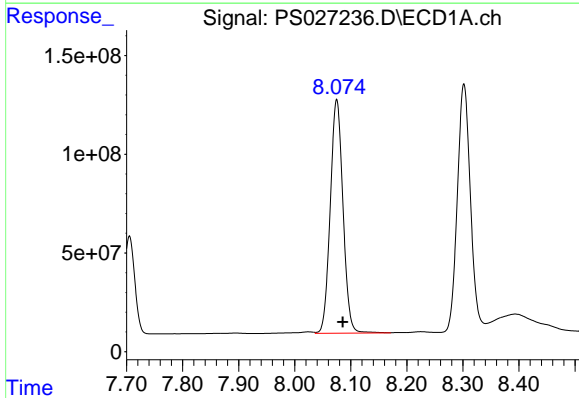
R.T.: 7.705 min
 Delta R.T.: -0.006 min
 Response: 710426657
 Conc: 69.72 ug/ml

Instrument :
 ECD_S
 ClientSampleId :
 HSTDCCC750



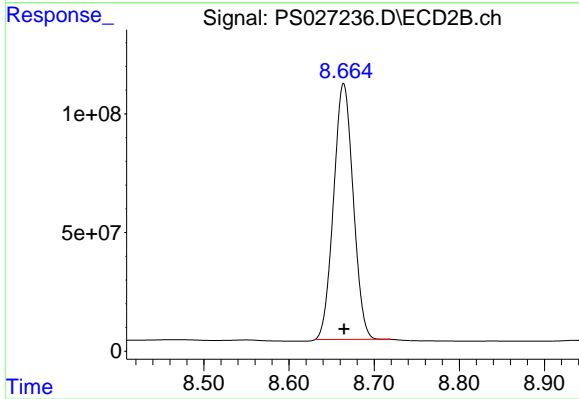
#7 MCPA

R.T.: 8.296 min
 Delta R.T.: 0.004 min
 Response: 673788803
 Conc: 64.36 ug/ml



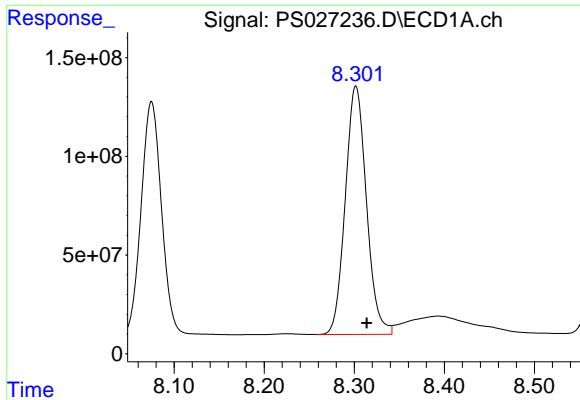
#8 DICHLORPROP

R.T.: 8.075 min
 Delta R.T.: -0.010 min
 Response: 1868801018
 Conc: 696.43 ng/ml



#8 DICHLORPROP

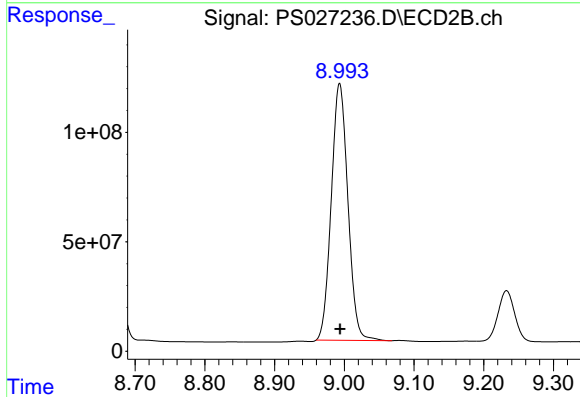
R.T.: 8.664 min
 Delta R.T.: 0.000 min
 Response: 1728499982
 Conc: 668.34 ng/ml



#9 2,4-D

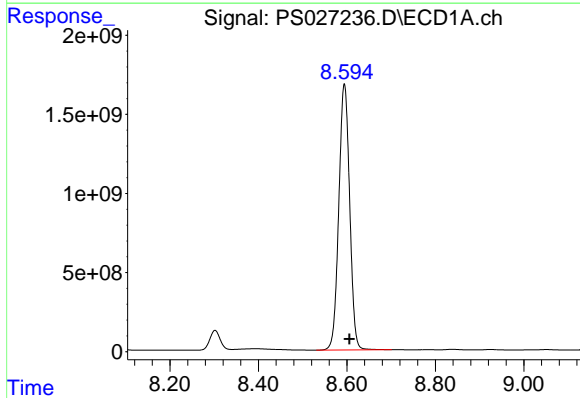
R.T.: 8.302 min
 Delta R.T.: -0.012 min
 Response: 2055840440
 Conc: 714.55 ng/ml

Instrument :
 ECD_S
 ClientSampleId :
 HSTDCCC750



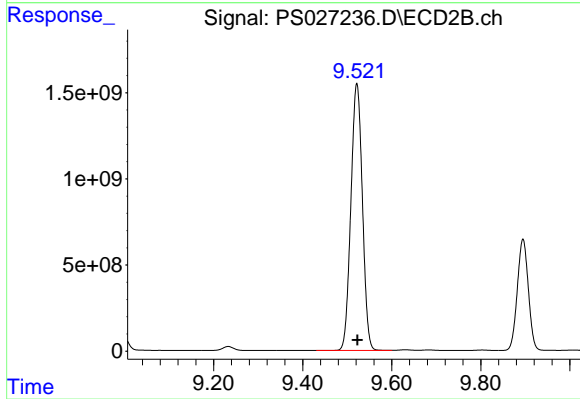
#9 2,4-D

R.T.: 8.993 min
 Delta R.T.: 0.000 min
 Response: 1942093007
 Conc: 673.59 ng/ml



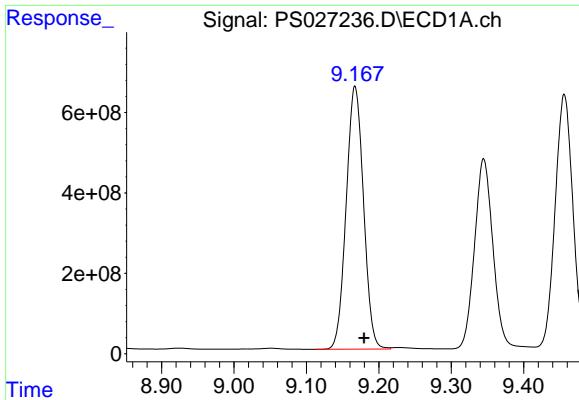
#10 Pentachlorophenol

R.T.: 8.594 min
 Delta R.T.: -0.012 min
 Response: 28640678903
 Conc: 724.88 ng/ml



#10 Pentachlorophenol

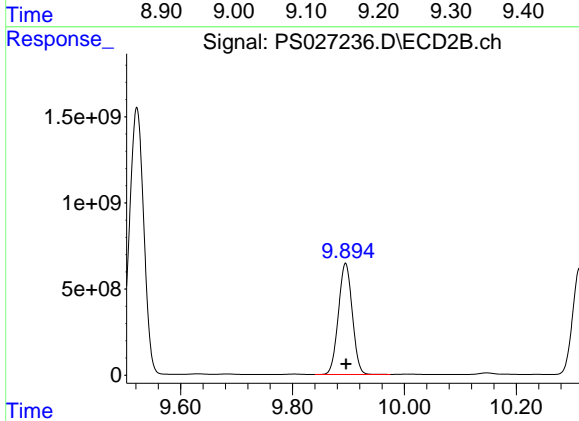
R.T.: 9.522 min
 Delta R.T.: 0.000 min
 Response: 27767963311
 Conc: 711.60 ng/ml



#11 2,4,5-TP (SILVEX)

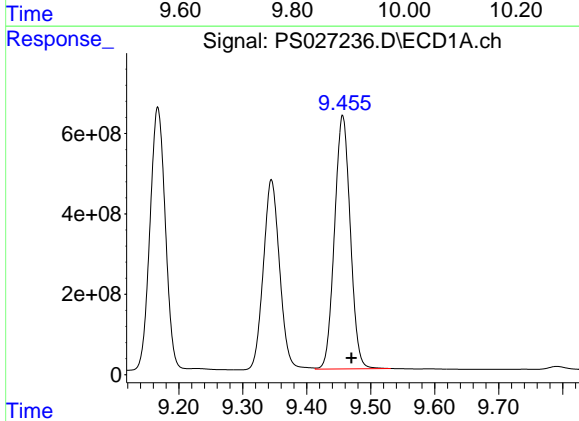
R.T.: 9.167 min
 Delta R.T.: -0.012 min
 Response: 10877710067
 Conc: 718.60 ng/ml

Instrument :
 ECD_S
 ClientSampleId :
 HSTDCCC750



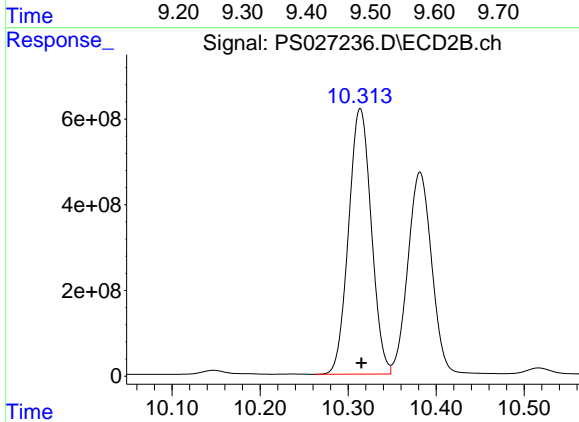
#11 2,4,5-TP (SILVEX)

R.T.: 9.895 min
 Delta R.T.: -0.001 min
 Response: 1110177547
 Conc: 696.17 ng/ml



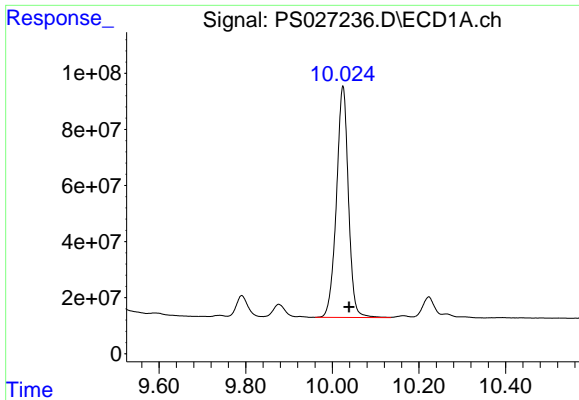
#12 2,4,5-T

R.T.: 9.456 min
 Delta R.T.: -0.014 min
 Response: 10777234345
 Conc: 729.13 ng/ml



#12 2,4,5-T

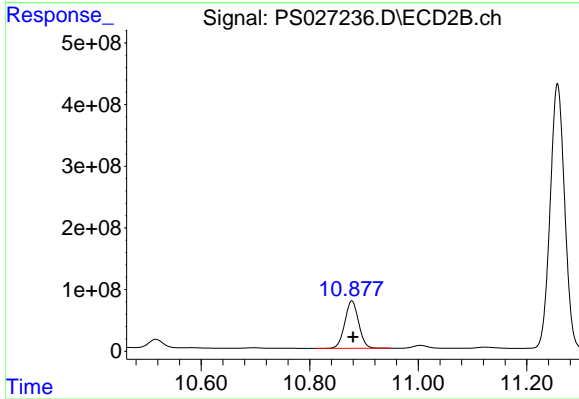
R.T.: 10.314 min
 Delta R.T.: -0.001 min
 Response: 11097552896
 Conc: 694.52 ng/ml



#13 2,4-DB

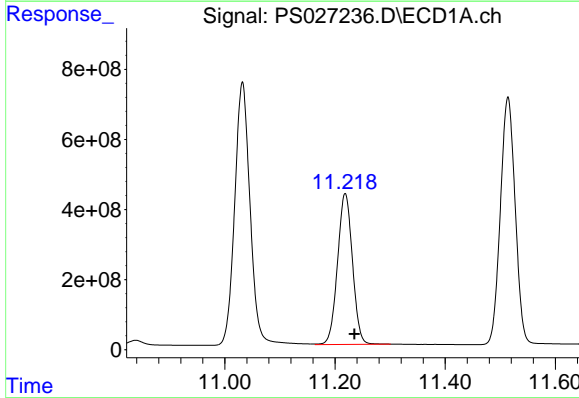
R.T.: 10.024 min
 Delta R.T.: -0.015 min
 Response: 1583277167
 Conc: 732.70 ng/ml

Instrument :
 ECD_S
 ClientSampleId :
 HSTDCCC750



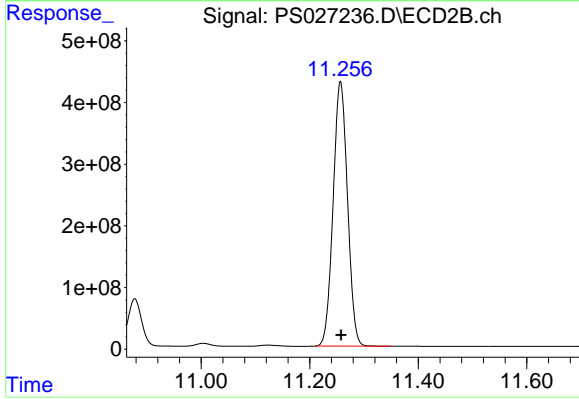
#13 2,4-DB

R.T.: 10.878 min
 Delta R.T.: -0.002 min
 Response: 1362625125
 Conc: 674.25 ng/ml



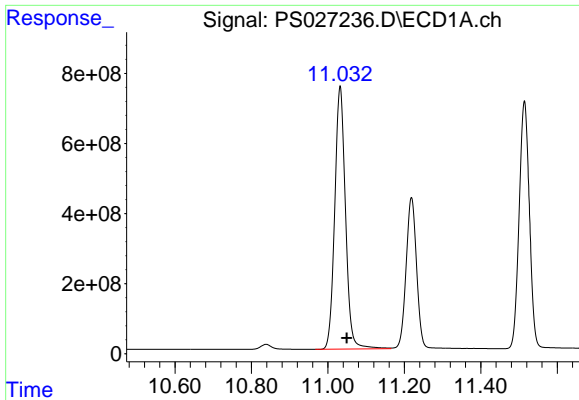
#14 DINOSEB

R.T.: 11.219 min
 Delta R.T.: -0.017 min
 Response: 8089378639
 Conc: 718.26 ng/ml



#14 DINOSEB

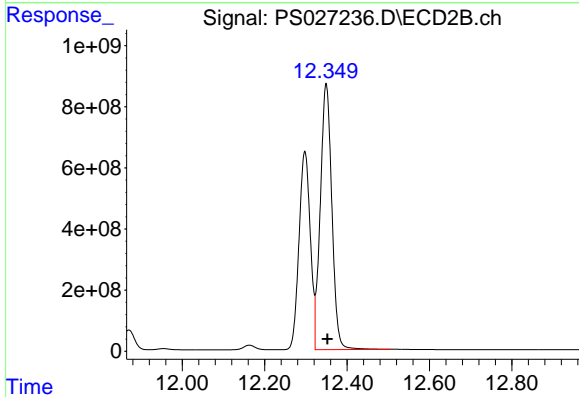
R.T.: 11.257 min
 Delta R.T.: -0.002 min
 Response: 7882965005
 Conc: 705.61 ng/ml



#15 Picloram

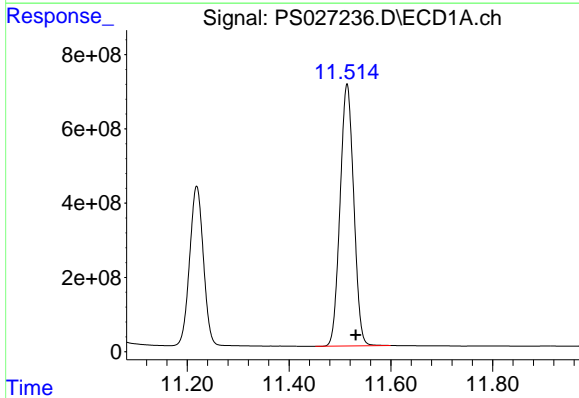
R.T.: 11.032 min
 Delta R.T.: -0.018 min
 Response: 14591385953
 Conc: 749.08 ng/ml

Instrument :
 ECD_S
 ClientSampleId :
 HSTDCCC750



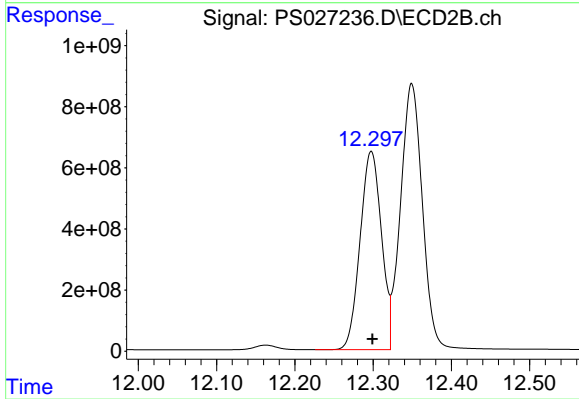
#15 Picloram

R.T.: 12.349 min
 Delta R.T.: -0.003 min
 Response: 16926931873
 Conc: 723.93 ng/ml



#16 DCPA

R.T.: 11.514 min
 Delta R.T.: -0.017 min
 Response: 13132565981
 Conc: 731.50 ng/ml



#16 DCPA

R.T.: 12.298 min
 Delta R.T.: -0.001 min
 Response: 12320564333
 Conc: 704.28 ng/ml