

Data Path : Z:\pestpcbsrv\HPCHEM1\ECD\_S\Data\PS072924\  
 Data File : PS027238.D  
 Signal(s) : Signal #1: ECD1A.ch Signal #2: ECD2B.ch  
 Acq On : 29 Jul 2024 22:38  
 Operator : AR\AJ  
 Sample : P3379-07  
 Misc :  
 ALS Vial : 14 Sample Multiplier: 1

Instrument :  
 ECD\_S  
 ClientSampleId :  
 OU4-PCS-04-072324

Integration File signal 1: autoint1.e  
 Integration File signal 2: autoint2.e  
 Quant Time: Jul 30 02:02:36 2024  
 Quant Method : Z:\pestpcbsrv\HPCHEM1\ECD\_S\Method\PS071224.M  
 Quant Title : 8080.M  
 QLast Update : Thu Jun 27 04:33:52 2024  
 Response via : Initial Calibration  
 Integrator: ChemStation

Volume Inj. : 1 µl  
 Signal #1 Phase : ZB-MR2 Signal #2 Phase: ZB-MR2  
 Signal #1 Info : 30M x 0.32mm x0.5 Signal #2 Info : 30M x 0.32mm x 0.25µm

Compound	RT#1	RT#2	Resp#1	Resp#2	ng/ml	ng/ml
-----						
System Monitoring Compounds						
4) S 2,4-DCAA	7.195	7.751	811.0E6	607.8E6	320.716	262.144
Target Compounds						
1) T Dalapon	0.000	2.670f	0	609.6E6	N.D.	146.888
2) T 3,5-DICHL...	6.399	6.711	2809204	3599362	<MDL	1.061 #
3) T 4-Nitroph...	6.991	7.268	9689358	21376782	6.044	12.928 #
5) T DICAMBA	7.397	7.948	22571443	5951523	2.054	<MDL #
6) T MCPP	7.609f	8.045	76753138	3854908	9.999	<MDL #
7) T MCPA	7.710	8.285	10096328	17181985	<MDL	1.641 #
8) T DICHLORPROP	8.113f	8.712f	54389211	-16148922	20.269	N.D. #
9) T 2,4-D	0.000	8.990	0	7928533	N.D.	2.750
10) T Pentachlo...	8.585	9.556f	10790467	28777262	<MDL	<MDL #
11) T 2,4,5-TP ...	9.131f	9.900	30737673	12854862	2.031	<MDL #
12) T 2,4,5-T	9.499f	10.308	11727425	56004952	<MDL	3.505 #
13) T 2,4-DB	10.051	10.861	170.9E6	-7016866	79.102	N.D. #
14) T DINOSEB	11.236	11.260	59894868	75480343	5.318	6.756 #
15) T Picloram	11.037	12.348	171.6E6	32358263	8.809	1.384 #
16) T DCPA	0.000	12.305	0	10907928	N.D.	<MDL
-----						

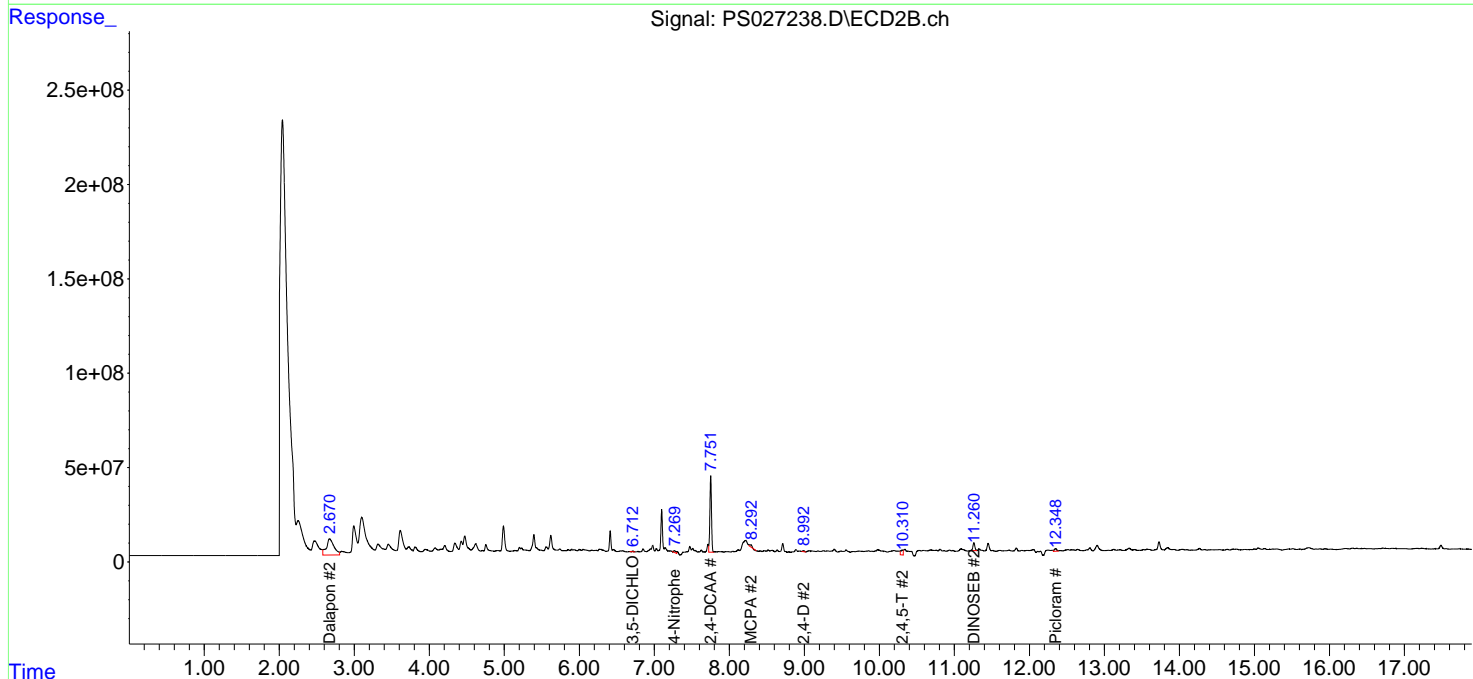
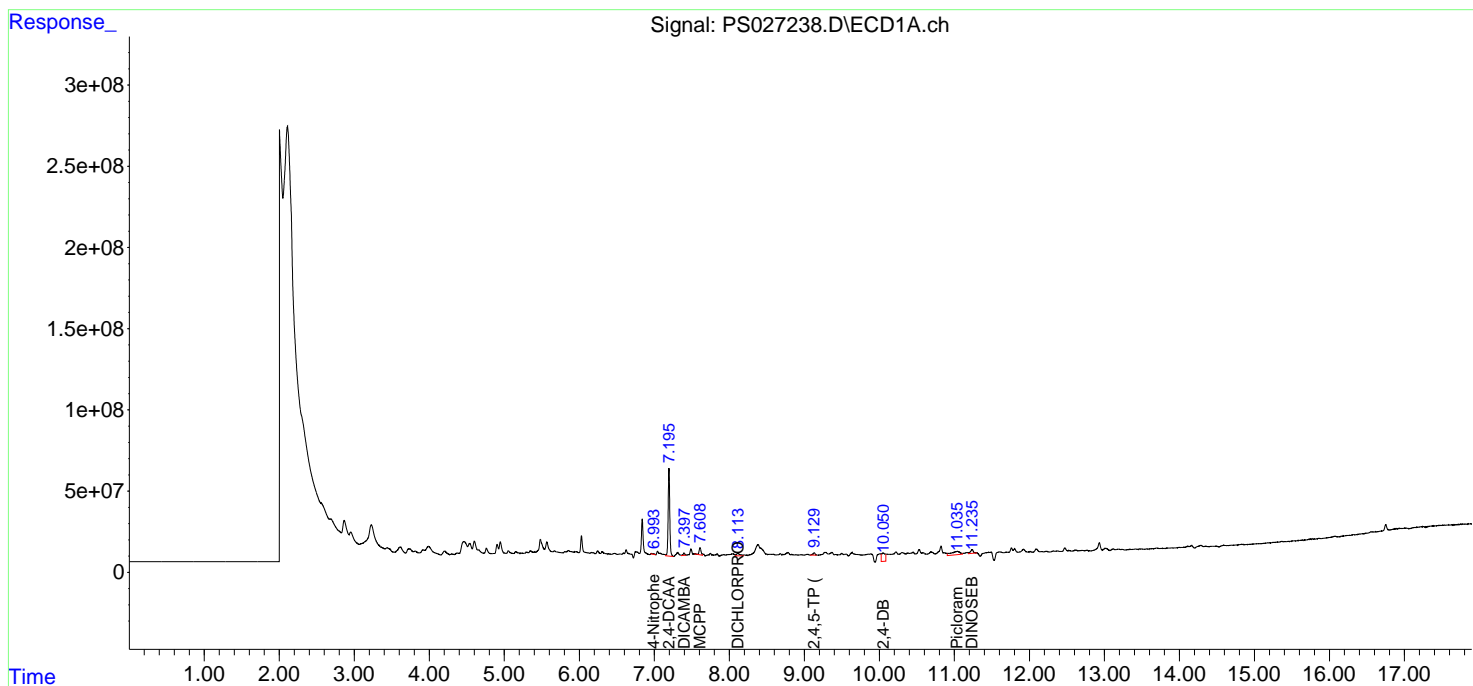
(f)=RT Delta > 1/2 Window (#)=Amounts differ by > 25% (m)=manual int.

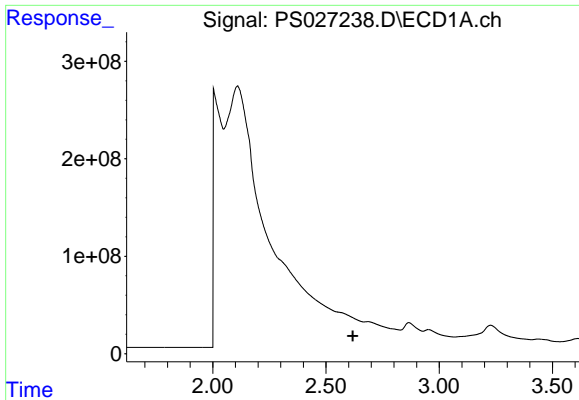
Data Path : Z:\pestpcbsrv\HPCHEM1\ECD\_S\Data\PS072924\  
 Data File : PS027238.D  
 Signal(s) : Signal #1: ECD1A.ch Signal #2: ECD2B.ch  
 Acq On : 29 Jul 2024 22:38  
 Operator : AR\AJ  
 Sample : P3379-07  
 Misc :  
 ALS Vial : 14 Sample Multiplier: 1

Instrument :  
 ECD\_S  
 ClientSampleId :  
 OU4-PCS-04-072324

Integration File signal 1: autoint1.e  
 Integration File signal 2: autoint2.e  
 Quant Time: Jul 30 02:02:36 2024  
 Quant Method : Z:\pestpcbsrv\HPCHEM1\ECD\_S\Method\PS071224.M  
 Quant Title : 8080.M  
 QLast Update : Thu Jun 27 04:33:52 2024  
 Response via : Initial Calibration  
 Integrator: ChemStation

Volume Inj. : 1 µl  
 Signal #1 Phase : ZB-MR1 Signal #2 Phase: ZB-MR2  
 Signal #1 Info : 30M x 0.32mm x0.5 Signal #2 Info : 30M x 0.32mm x 0.25µm

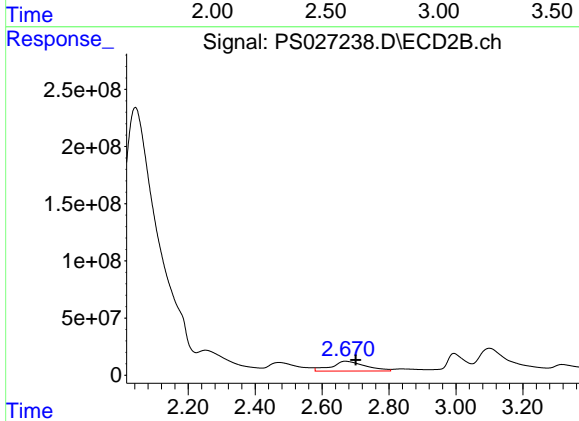




#1 Dalapon

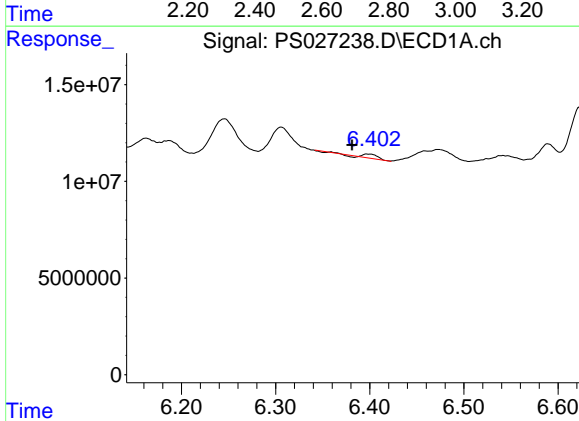
R.T.: 0.000 min  
 Exp R.T.: 2.619 min  
 Response: 0  
 Conc: N.D.

Instrument :  
 ECD\_S  
 ClientSampleId :  
 OU4-PCS-04-072324



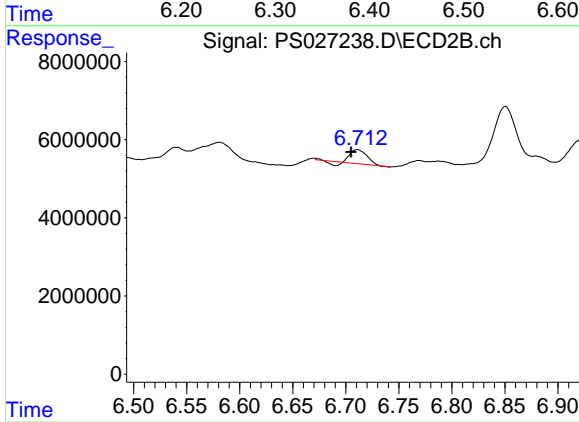
#1 Dalapon

R.T.: 2.670 min  
 Delta R.T.: -0.030 min  
 Response: 609602049  
 Conc: 146.89 ng/ml



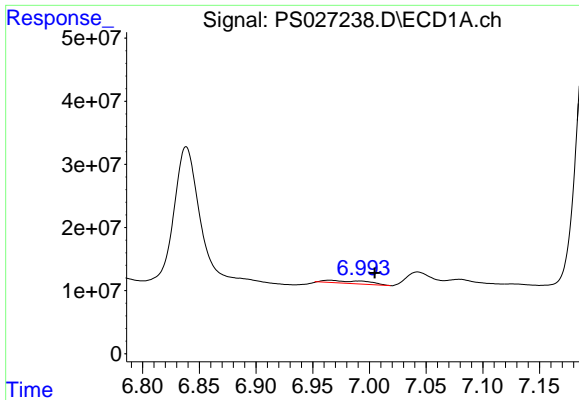
#2 3,5-DICHLOROBENZOIC ACID

R.T.: 6.399 min  
 Delta R.T.: 0.018 min  
 Response: 2809204  
 Conc: N.D.



#2 3,5-DICHLOROBENZOIC ACID

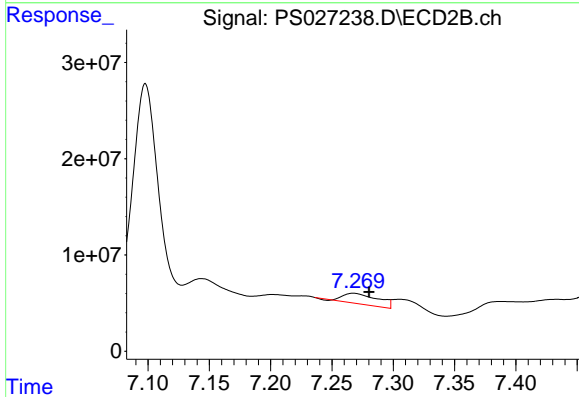
R.T.: 6.711 min  
 Delta R.T.: 0.006 min  
 Response: 3599362  
 Conc: 1.06 ng/ml



#3 4-Nitrophenol

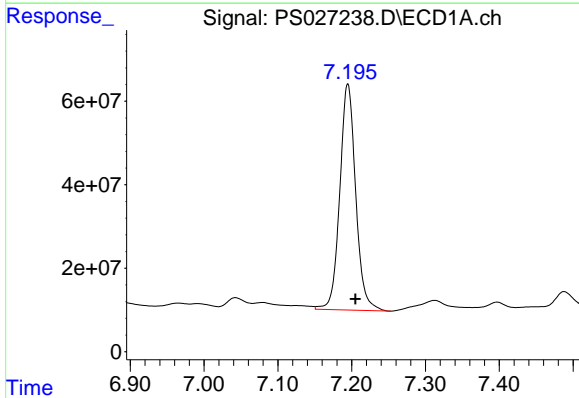
R.T.: 6.991 min  
 Delta R.T.: -0.014 min  
 Response: 9689358  
 Conc: 6.04 ng/ml

Instrument :  
 ECD\_S  
 ClientSampleId :  
 OU4-PCS-04-072324



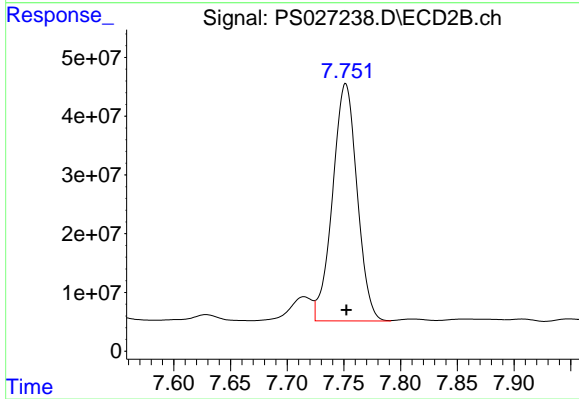
#3 4-Nitrophenol

R.T.: 7.268 min  
 Delta R.T.: -0.013 min  
 Response: 21376782  
 Conc: 12.93 ng/ml



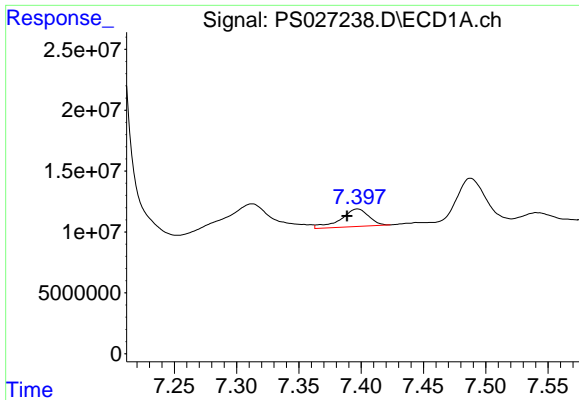
#4 2,4-DCAA

R.T.: 7.195 min  
 Delta R.T.: -0.010 min  
 Response: 811015523  
 Conc: 320.72 ng/ml



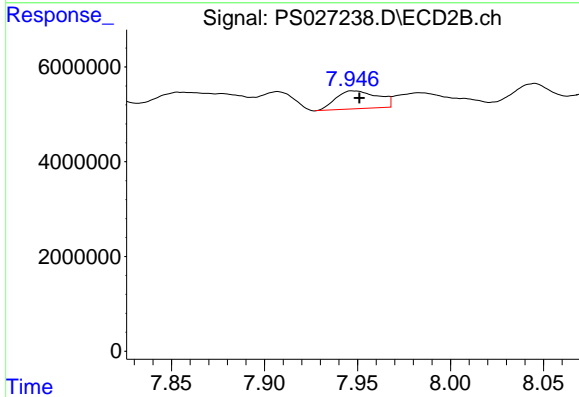
#4 2,4-DCAA

R.T.: 7.751 min  
 Delta R.T.: 0.000 min  
 Response: 607839045  
 Conc: 262.14 ng/ml

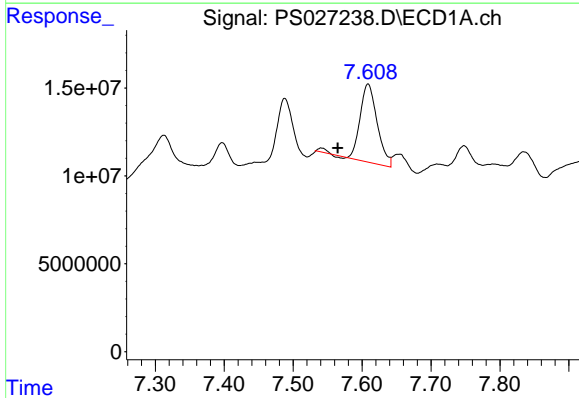


#5 DICAMBA  
 R.T.: 7.397 min  
 Delta R.T.: 0.008 min  
 Response: 22571443  
 Conc: 2.05 ng/ml

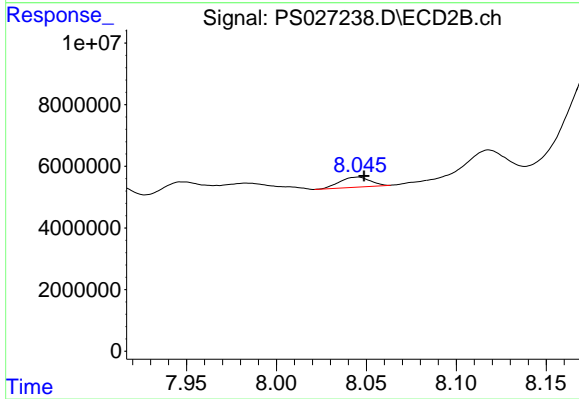
Instrument :  
 ECD\_S  
 ClientSampleId :  
 OU4-PCS-04-072324



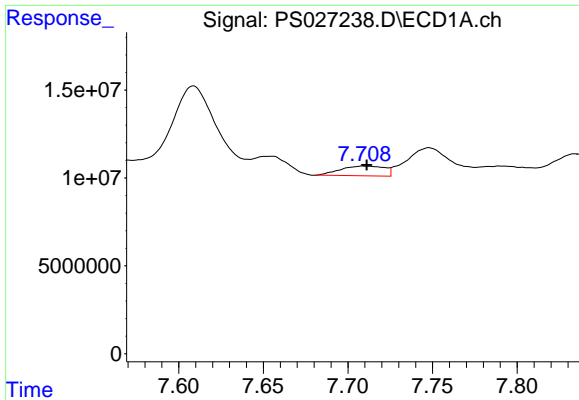
#5 DICAMBA  
 R.T.: 7.948 min  
 Delta R.T.: -0.003 min  
 Response: 5951523  
 Conc: N.D.



#6 MCP  
 R.T.: 7.609 min  
 Delta R.T.: 0.044 min  
 Response: 76753138  
 Conc: 10.00 ug/ml



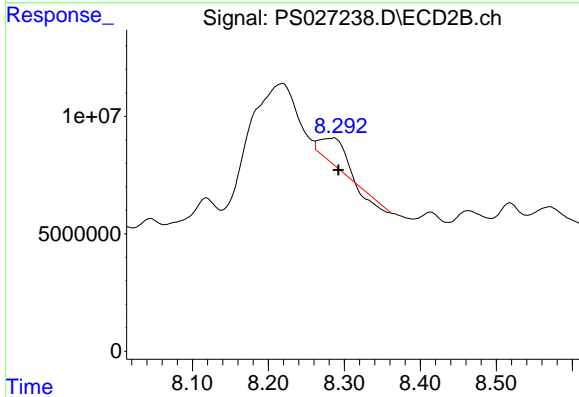
#6 MCP  
 R.T.: 8.045 min  
 Delta R.T.: -0.004 min  
 Response: 3854908  
 Conc: N.D.



#7 MCPA

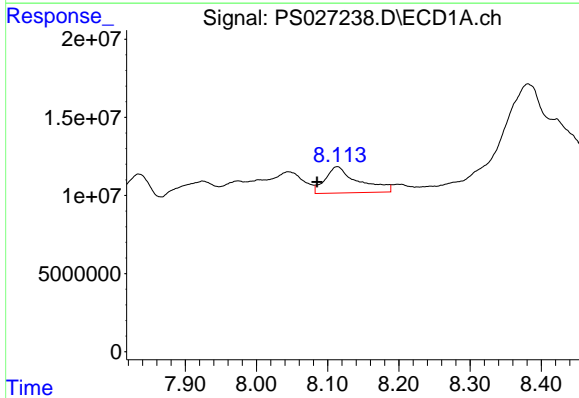
R.T.: 7.710 min  
 Delta R.T.: -0.001 min  
 Response: 10096328  
 Conc: N.D.

Instrument :  
 ECD\_S  
 ClientSampleId :  
 OU4-PCS-04-072324



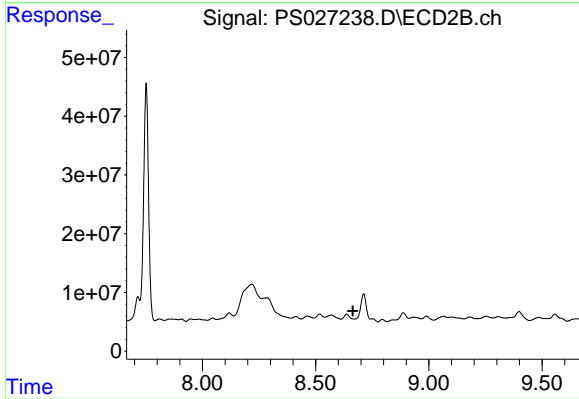
#7 MCPA

R.T.: 8.285 min  
 Delta R.T.: -0.007 min  
 Response: 17181985  
 Conc: 1.64 ug/ml



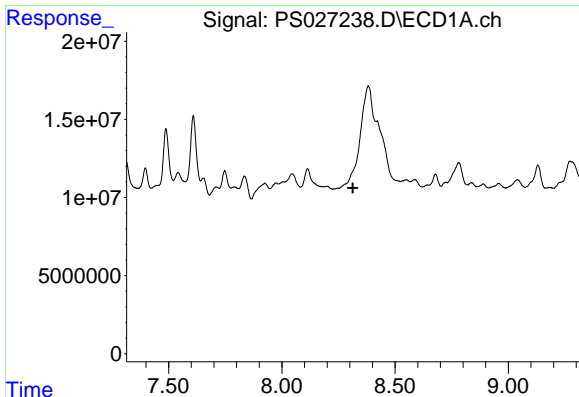
#8 DICHLORPROP

R.T.: 8.113 min  
 Delta R.T.: 0.028 min  
 Response: 54389211  
 Conc: 20.27 ng/ml



#8 DICHLORPROP

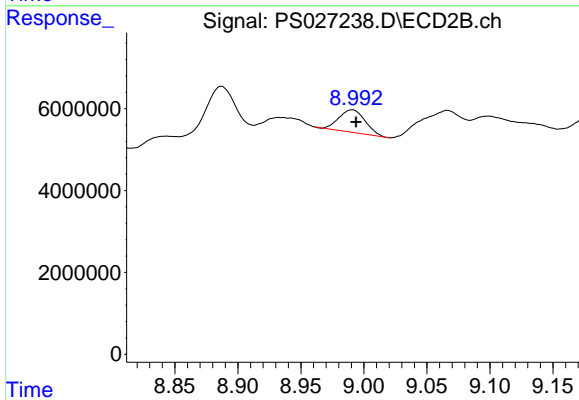
R.T.: 8.712 min  
 Delta R.T.: 0.047 min  
 Response: -16148922  
 Conc: N.D.



#9 2,4-D

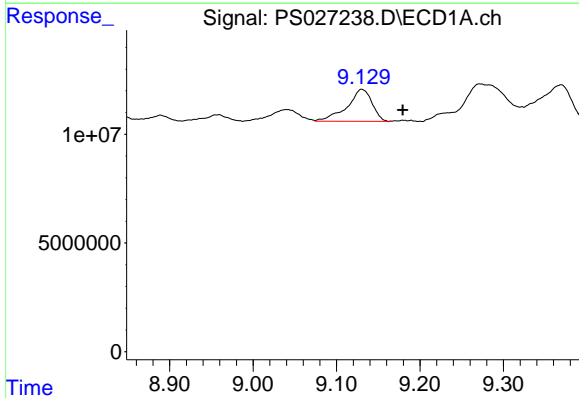
R.T.: 0.000 min  
 Exp R.T.: 8.314 min  
 Response: 0  
 Conc: N.D.

Instrument :  
 ECD\_S  
 ClientSampleId :  
 OU4-PCS-04-072324



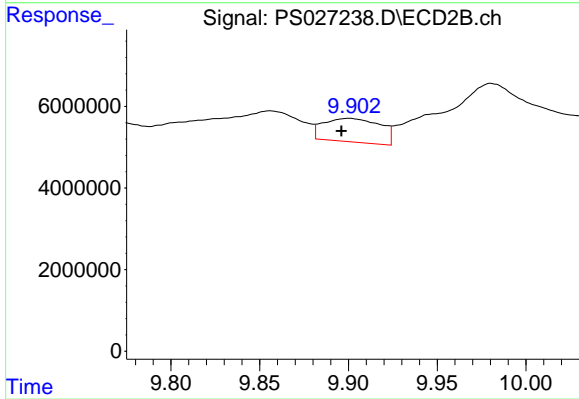
#9 2,4-D

R.T.: 8.990 min  
 Delta R.T.: -0.003 min  
 Response: 7928533  
 Conc: 2.75 ng/ml



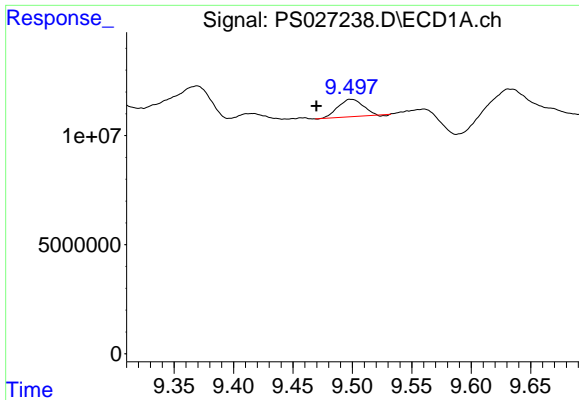
#11 2,4,5-TP (SILVEX)

R.T.: 9.131 min  
 Delta R.T.: -0.049 min  
 Response: 30737673  
 Conc: 2.03 ng/ml



#11 2,4,5-TP (SILVEX)

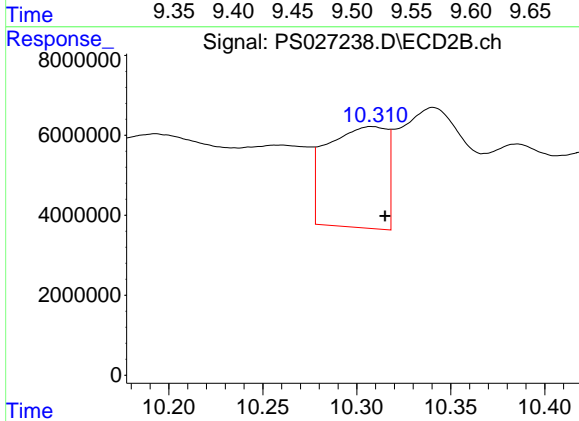
R.T.: 9.900 min  
 Delta R.T.: 0.004 min  
 Response: 12854862  
 Conc: N.D.



#12 2,4,5-T

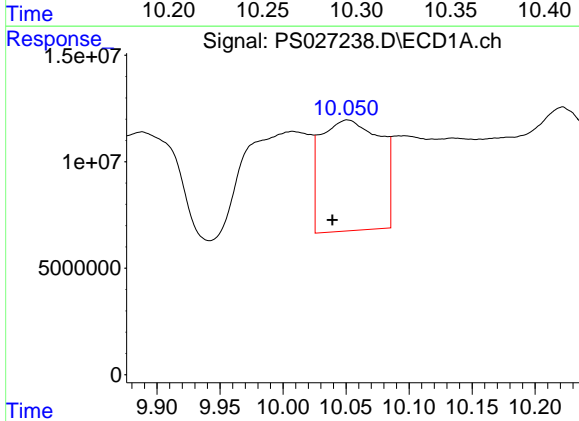
R.T.: 9.499 min  
 Delta R.T.: 0.029 min  
 Response: 11727425  
 Conc: N.D.

Instrument :  
 ECD\_S  
 ClientSampleId :  
 OU4-PCS-04-072324



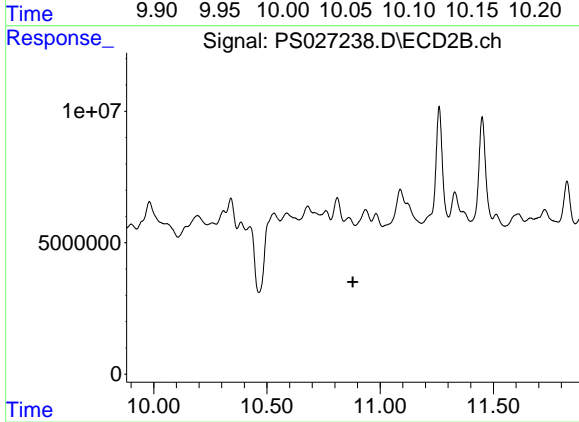
#12 2,4,5-T

R.T.: 10.308 min  
 Delta R.T.: -0.007 min  
 Response: 56004952  
 Conc: 3.50 ng/ml



#13 2,4-DB

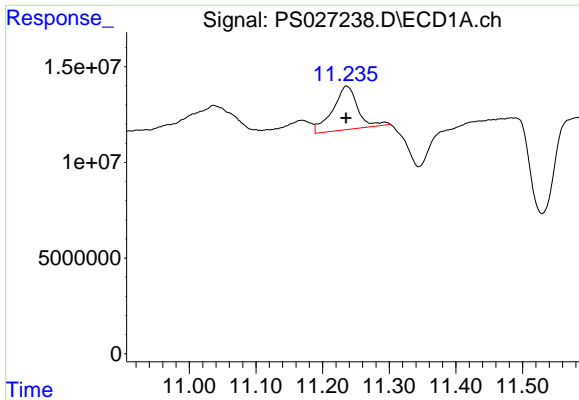
R.T.: 10.051 min  
 Delta R.T.: 0.012 min  
 Response: 170931759  
 Conc: 79.10 ng/ml



#13 2,4-DB

R.T.: 10.861 min  
 Delta R.T.: -0.018 min  
 Response: -7016866  
 Conc: N.D.

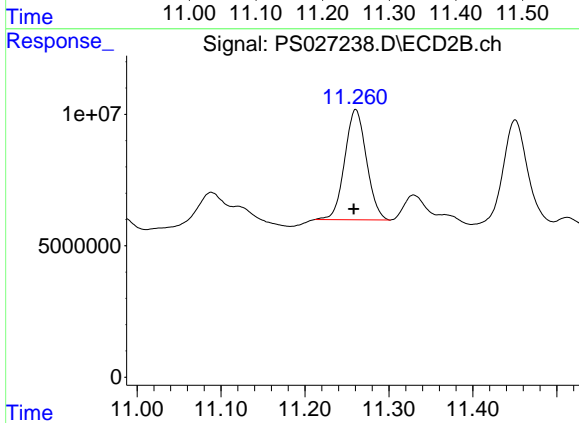




#14 DINOSEB

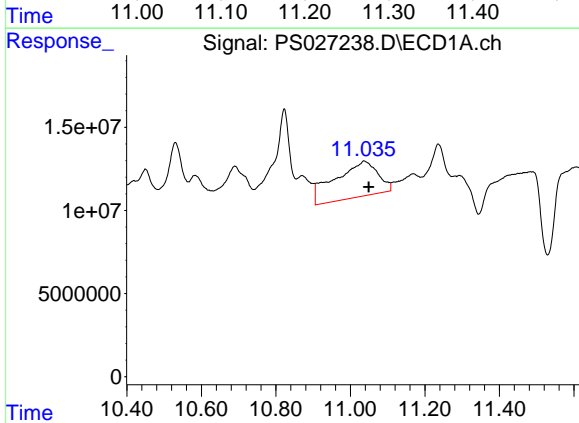
R.T.: 11.236 min  
 Delta R.T.: 0.000 min  
 Response: 59894868  
 Conc: 5.32 ng/ml

Instrument :  
 ECD\_S  
 ClientSampleId :  
 OU4-PCS-04-072324



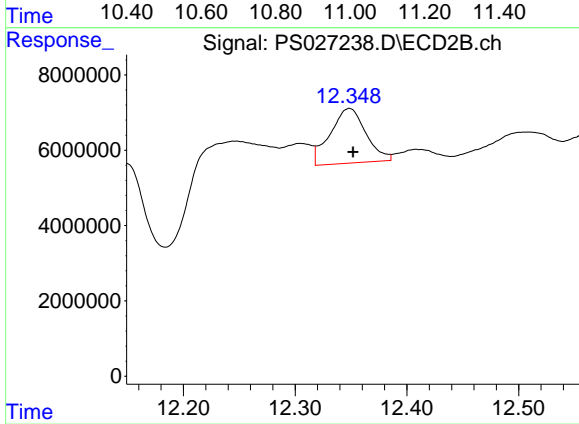
#14 DINOSEB

R.T.: 11.260 min  
 Delta R.T.: 0.002 min  
 Response: 75480343  
 Conc: 6.76 ng/ml



#15 Picloram

R.T.: 11.037 min  
 Delta R.T.: -0.013 min  
 Response: 171597336  
 Conc: 8.81 ng/ml



#15 Picloram

R.T.: 12.348 min  
 Delta R.T.: -0.004 min  
 Response: 32358263  
 Conc: 1.38 ng/ml