

Data Path : Z:\pestpcbsrv\HPCHEM1\ECD_S\Data\PS072924\
 Data File : PS027244.D
 Signal(s) : Signal #1: ECD1A.ch Signal #2: ECD2B.ch
 Acq On : 30 Jul 2024 01:04
 Operator : AR\AJ
 Sample : P3379-19
 Misc :
 ALS Vial : 20 Sample Multiplier: 1

Instrument :
 ECD_S
 ClientSampleId :
 OU4-VSL-05-072324

Integration File signal 1: autoint1.e
 Integration File signal 2: autoint2.e
 Quant Time: Jul 30 06:55:12 2024
 Quant Method : Z:\pestpcbsrv\HPCHEM1\ECD_S\Method\PS071224.M
 Quant Title : 8080.M
 QLast Update : Thu Jun 27 04:33:52 2024
 Response via : Initial Calibration
 Integrator: ChemStation

Volume Inj. : 1 µl
 Signal #1 Phase : ZB-MR2 Signal #2 Phase: ZB-MR2
 Signal #1 Info : 30M x 0.32mm x0.5 Signal #2 Info : 30M x 0.32mm x 0.25µm

	Compound	RT#1	RT#2	Resp#1	Resp#2	ng/ml	ng/ml

System Monitoring Compounds							
4) S	2,4-DCAA	7.195	7.751	973.0E6	770.1E6	384.758	332.113
Target Compounds							
1) T	Dalapon	0.000	2.669f	0	548.5E6	N.D.	132.174
2) T	3,5-DICHL...	6.401	6.710	188073	4143671	<MDL	1.222 #
3) T	4-Nitroph...	7.043f	7.272	10351501	19228040	6.457	11.628 #
5) T	DICAMBA	7.396	7.948	18562772	6215051	1.689	<MDL #
6) T	MCP P	7.608f	8.045	94546852	2063939	12.317	<MDL #
7) T	MCPA	7.709	8.286	15702594	15321872	1.541	1.464
8) T	DICHLORPROP	8.111f	8.711f	35547835	-7877673	13.247	N.D. #
9) T	2,4-D	0.000	8.992	0	6846352	N.D.	2.375
10) T	Pentachlo...	8.631	9.517	6759639	10462838	<MDL	<MDL #
11) T	2,4,5-TP ...	9.221f	9.902	27595606	9946460	1.823	<MDL #
12) T	2,4,5-T	9.499f	10.304	3181593	147.4E6	<MDL	9.223 #
13) T	2,4-DB	10.056	10.862	114.8E6	507496	53.124	<MDL #
14) T	DINOSEB	11.235	11.259	103.4E6	162.7E6	9.184	14.563 #
15) T	Picloram	11.047	12.345	50687565	12475592	2.602	<MDL #
16) T	DCPA	0.000	12.306	0	14878289	N.D.	<MDL

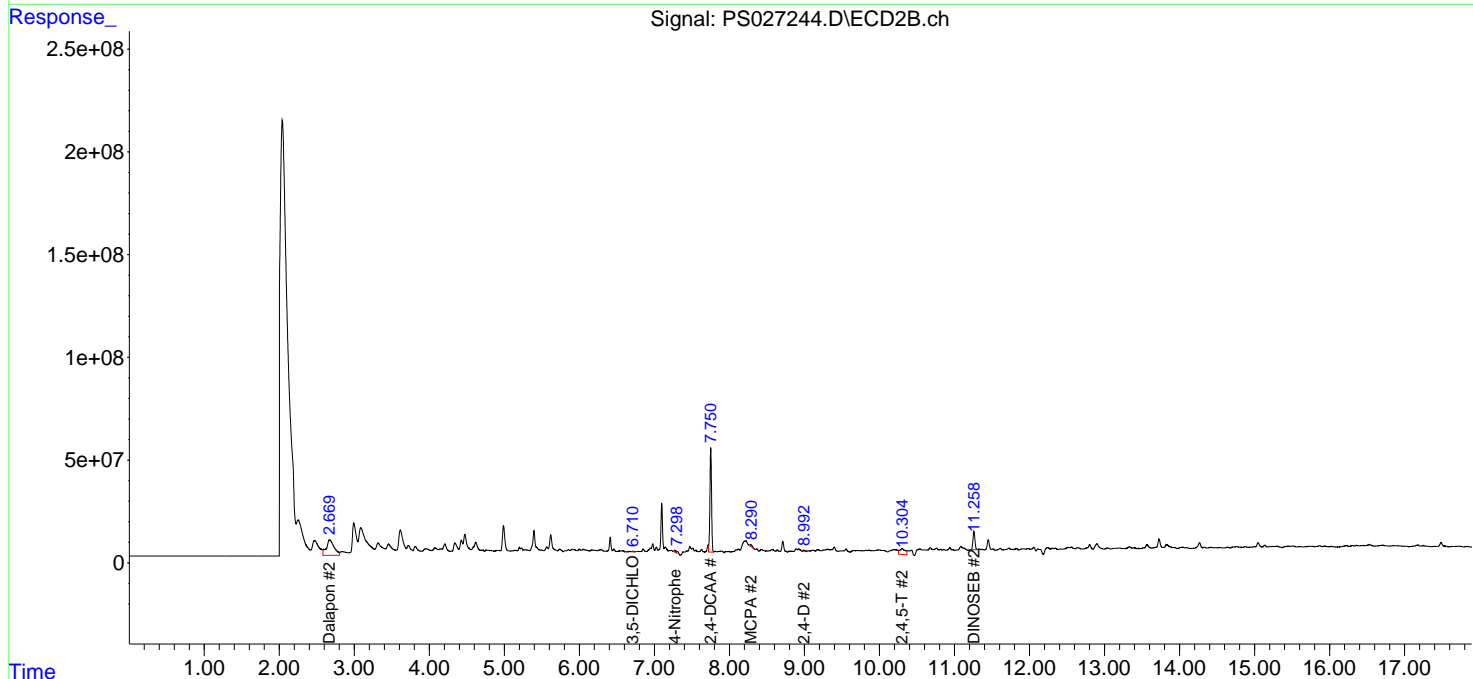
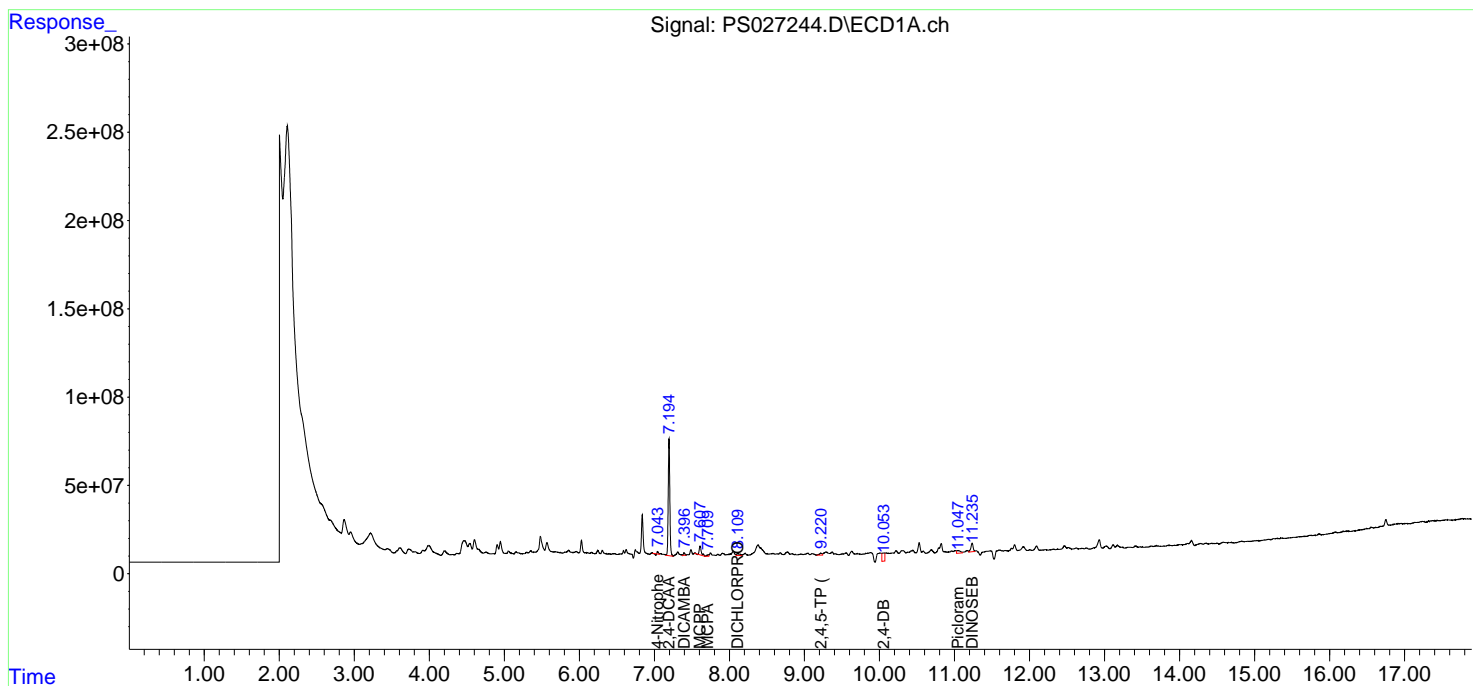
(f)=RT Delta > 1/2 Window (#)=Amounts differ by > 25% (m)=manual int.

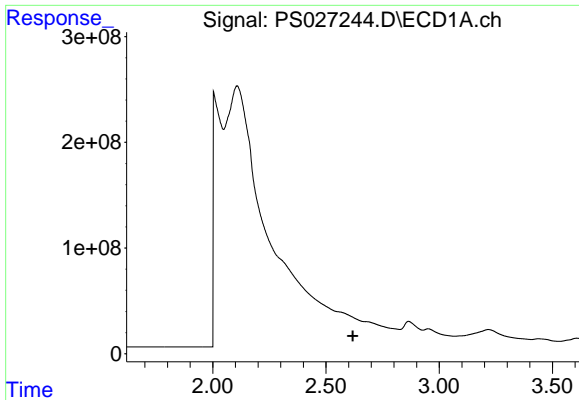
Data Path : Z:\pestpcbsrv\HPCHEM1\ECD_S\Data\PS072924\
 Data File : PS027244.D
 Signal(s) : Signal #1: ECD1A.ch Signal #2: ECD2B.ch
 Acq On : 30 Jul 2024 01:04
 Operator : AR\AJ
 Sample : P3379-19
 Misc :
 ALS Vial : 20 Sample Multiplier: 1

Instrument :
 ECD_S
 ClientSampleId :
 OU4-VSL-05-072324

Integration File signal 1: autoint1.e
 Integration File signal 2: autoint2.e
 Quant Time: Jul 30 06:55:12 2024
 Quant Method : Z:\pestpcbsrv\HPCHEM1\ECD_S\Method\PS071224.M
 Quant Title : 8080.M
 QLast Update : Thu Jun 27 04:33:52 2024
 Response via : Initial Calibration
 Integrator: ChemStation

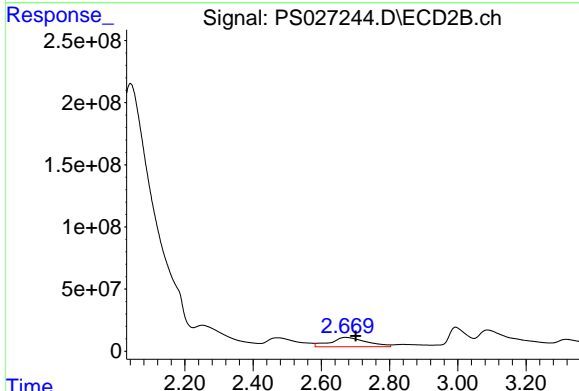
Volume Inj. : 1 µl
 Signal #1 Phase : ZB-MR1 Signal #2 Phase: ZB-MR2
 Signal #1 Info : 30M x 0.32mm x0.5 Signal #2 Info : 30M x 0.32mm x 0.25µm



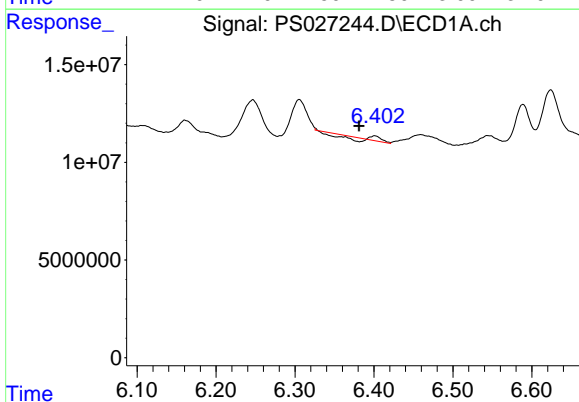


#1 Dalapon
 R.T.: 0.000 min
 Exp R.T.: 2.619 min
 Response: 0
 Conc: N.D.

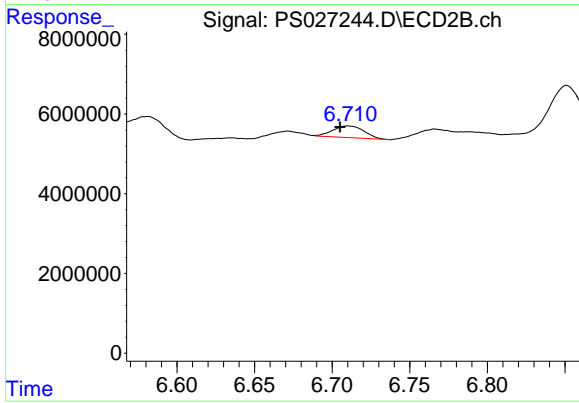
Instrument : ECD_S
 ClientSampleId : OU4-VSL-05-072324



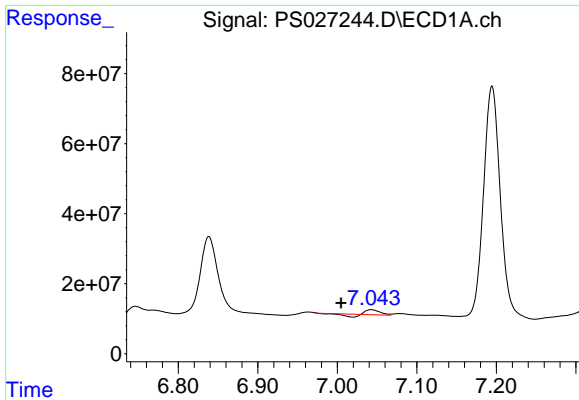
#1 Dalapon
 R.T.: 2.669 min
 Delta R.T.: -0.031 min
 Response: 548537096
 Conc: 132.17 ng/ml



#2 3,5-DICHLOROBENZOIC ACID
 R.T.: 6.401 min
 Delta R.T.: 0.020 min
 Response: 188073
 Conc: N.D.



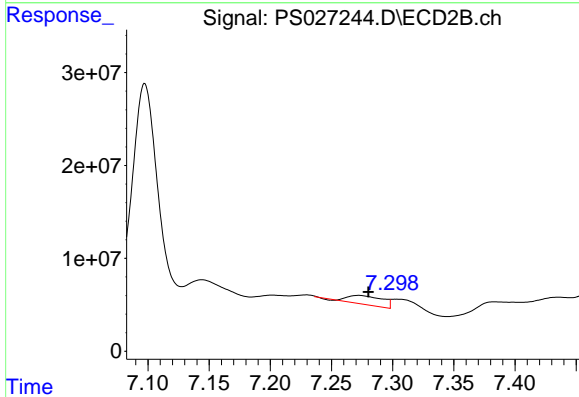
#2 3,5-DICHLOROBENZOIC ACID
 R.T.: 6.710 min
 Delta R.T.: 0.005 min
 Response: 4143671
 Conc: 1.22 ng/ml



#3 4-Nitrophenol

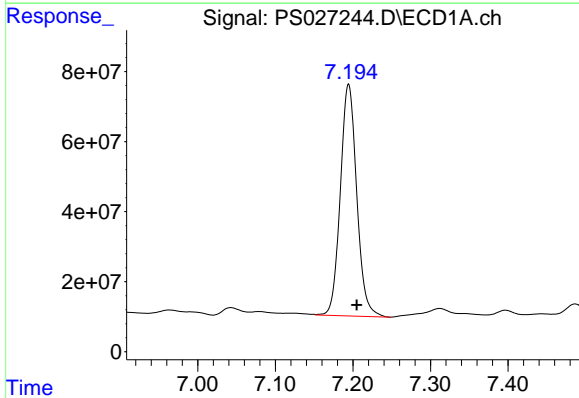
R.T.: 7.043 min
 Delta R.T.: 0.038 min
 Response: 10351501
 Conc: 6.46 ng/ml

Instrument :
 ECD_S
 ClientSampleId :
 OU4-VSL-05-072324



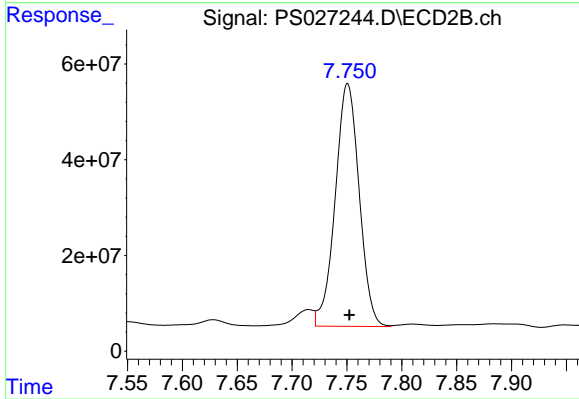
#3 4-Nitrophenol

R.T.: 7.272 min
 Delta R.T.: -0.008 min
 Response: 19228040
 Conc: 11.63 ng/ml



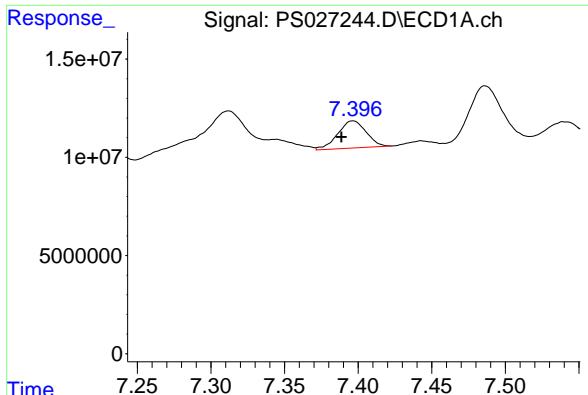
#4 2,4-DCAA

R.T.: 7.195 min
 Delta R.T.: -0.011 min
 Response: 972961865
 Conc: 384.76 ng/ml



#4 2,4-DCAA

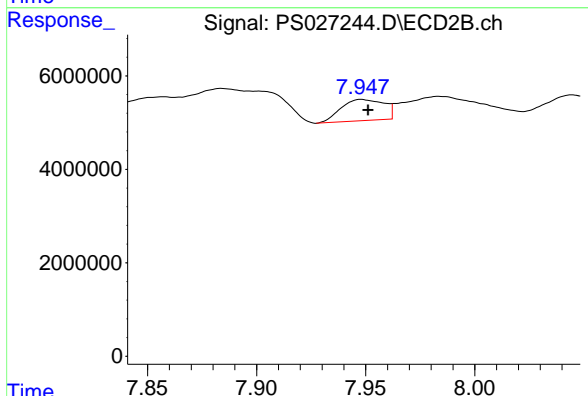
R.T.: 7.751 min
 Delta R.T.: -0.002 min
 Response: 770078461
 Conc: 332.11 ng/ml



#5 DICAMBA

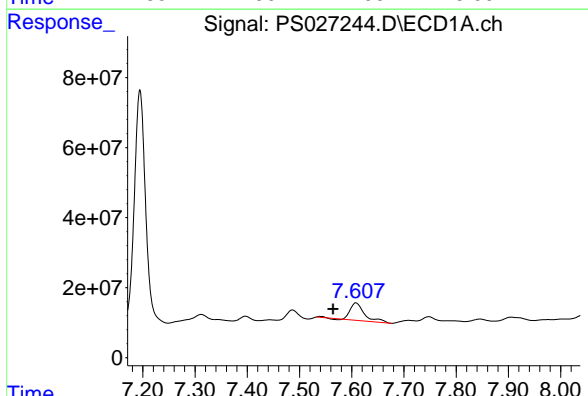
R.T.: 7.396 min
 Delta R.T.: 0.008 min
 Response: 18562772
 Conc: 1.69 ng/ml

Instrument :
 ECD_S
 ClientSampleId :
 OU4-VSL-05-072324



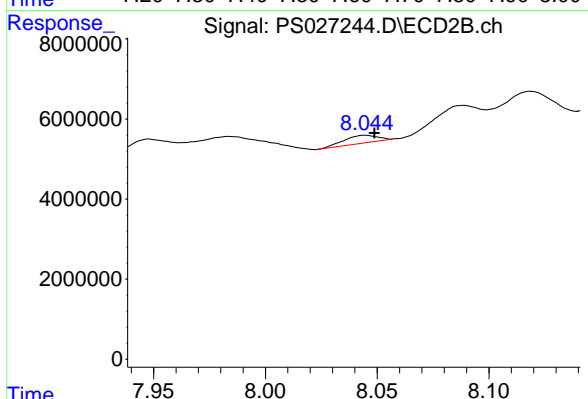
#5 DICAMBA

R.T.: 7.948 min
 Delta R.T.: -0.003 min
 Response: 6215051
 Conc: N.D.



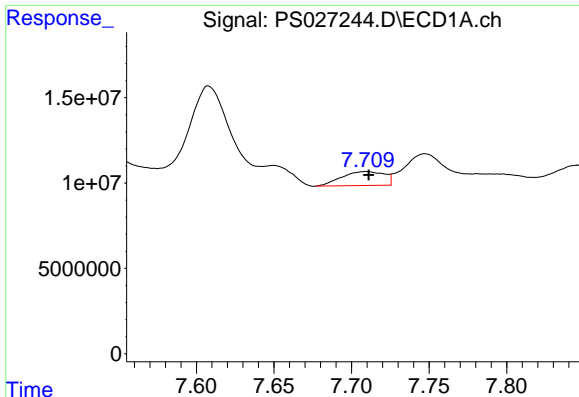
#6 MCP

R.T.: 7.608 min
 Delta R.T.: 0.043 min
 Response: 94546852
 Conc: 12.32 ug/ml



#6 MCP

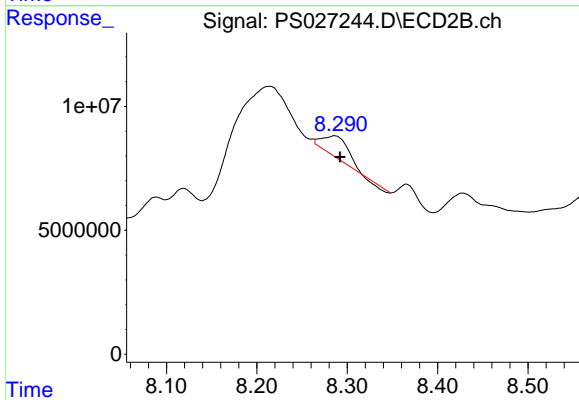
R.T.: 8.045 min
 Delta R.T.: -0.004 min
 Response: 2063939
 Conc: N.D.



#7 MCPA

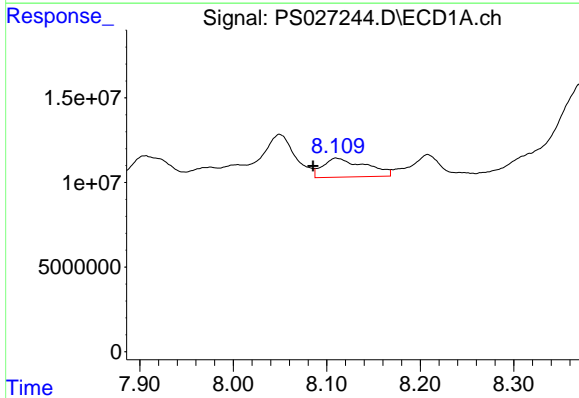
R.T.: 7.709 min
 Delta R.T.: -0.002 min
 Response: 15702594
 Conc: 1.54 ug/ml

Instrument :
 ECD_S
 ClientSampleId :
 OU4-VSL-05-072324



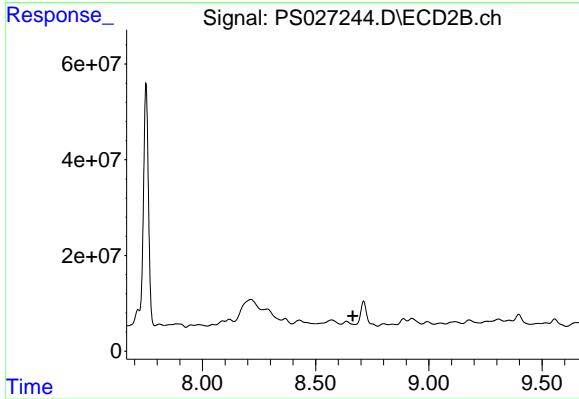
#7 MCPA

R.T.: 8.286 min
 Delta R.T.: -0.006 min
 Response: 15321872
 Conc: 1.46 ug/ml



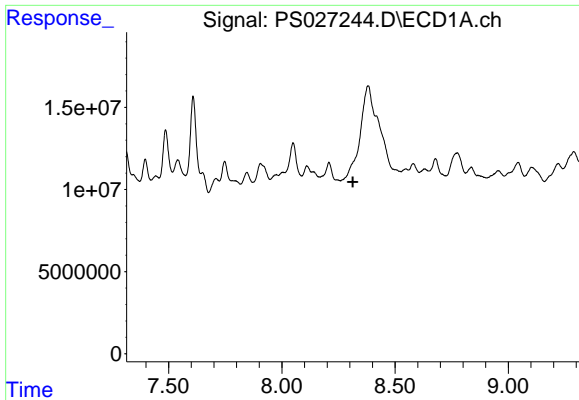
#8 DICHLORPROP

R.T.: 8.111 min
 Delta R.T.: 0.025 min
 Response: 35547835
 Conc: 13.25 ng/ml



#8 DICHLORPROP

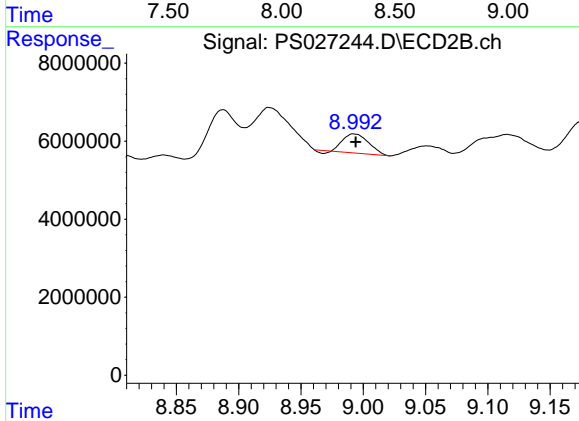
R.T.: 8.711 min
 Delta R.T.: 0.047 min
 Response: -7877673
 Conc: N.D.



#9 2,4-D

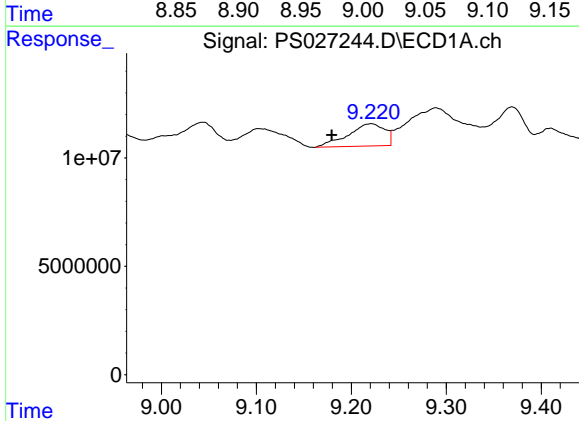
R.T.: 0.000 min
 Exp R.T.: 8.314 min
 Response: 0
 Conc: N.D.

Instrument :
 ECD_S
 ClientSampleId :
 OU4-VSL-05-072324



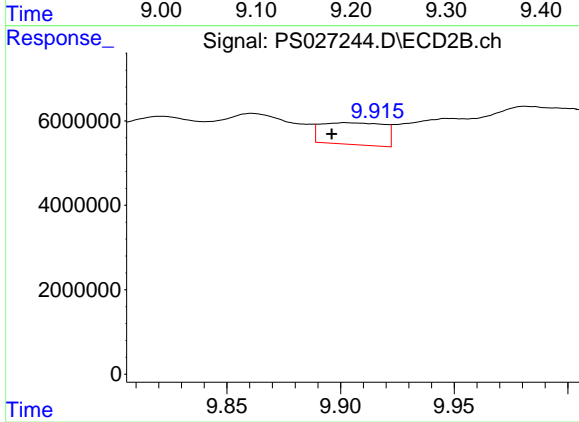
#9 2,4-D

R.T.: 8.992 min
 Delta R.T.: -0.002 min
 Response: 6846352
 Conc: 2.37 ng/ml



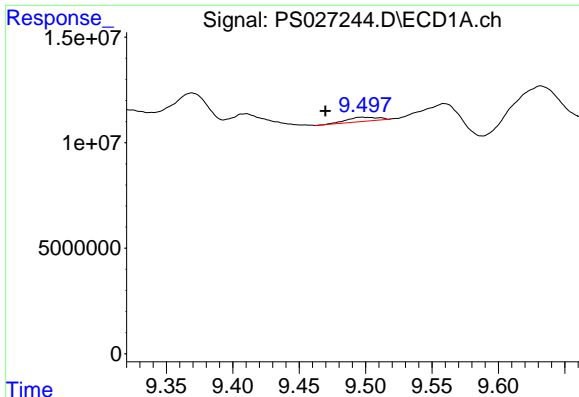
#11 2,4,5-TP (SILVEX)

R.T.: 9.221 min
 Delta R.T.: 0.041 min
 Response: 27595606
 Conc: 1.82 ng/ml



#11 2,4,5-TP (SILVEX)

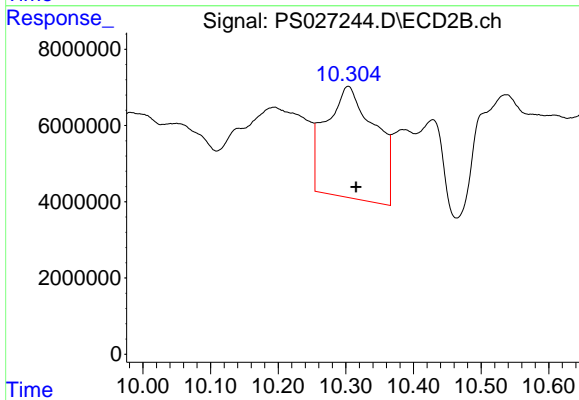
R.T.: 9.902 min
 Delta R.T.: 0.006 min
 Response: 9946460
 Conc: N.D.



#12 2,4,5-T

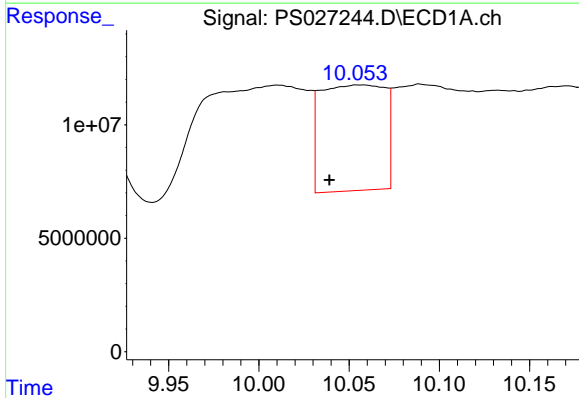
R.T.: 9.499 min
 Delta R.T.: 0.029 min
 Response: 3181593
 Conc: N.D.

Instrument :
 ECD_S
 ClientSampleId :
 OU4-VSL-05-072324



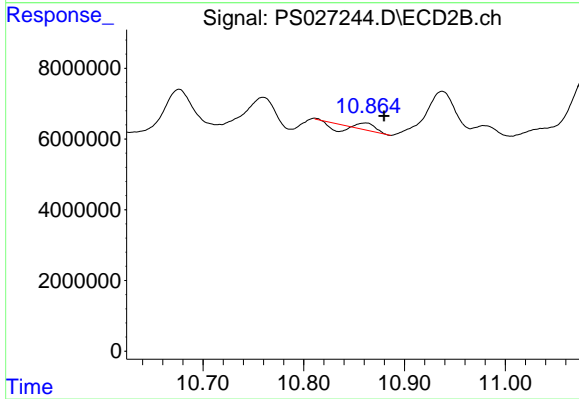
#12 2,4,5-T

R.T.: 10.304 min
 Delta R.T.: -0.011 min
 Response: 147376018
 Conc: 9.22 ng/ml



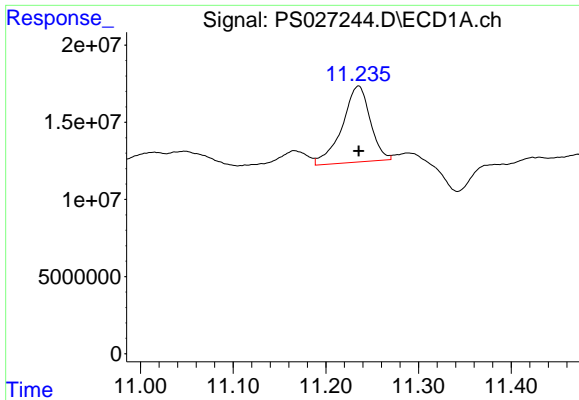
#13 2,4-DB

R.T.: 10.056 min
 Delta R.T.: 0.017 min
 Response: 114795159
 Conc: 53.12 ng/ml



#13 2,4-DB

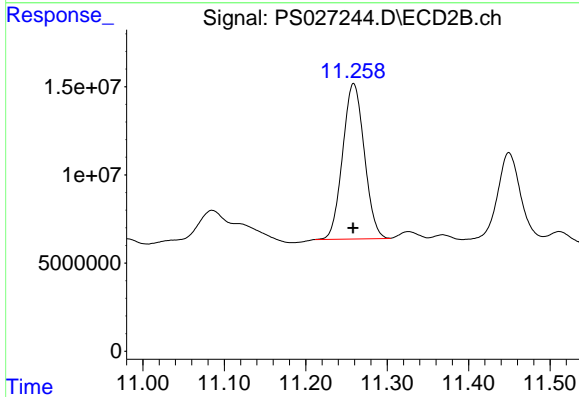
R.T.: 10.862 min
 Delta R.T.: -0.018 min
 Response: 507496
 Conc: N.D.



#14 DINOSEB

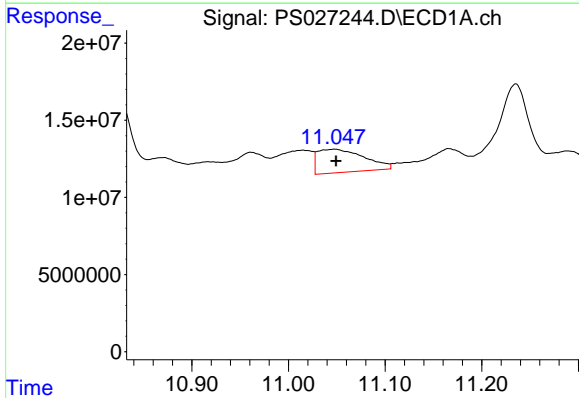
R.T.: 11.235 min
 Delta R.T.: 0.000 min
 Response: 103431167
 Conc: 9.18 ng/ml

Instrument :
 ECD_S
 ClientSampleId :
 OU4-VSL-05-072324



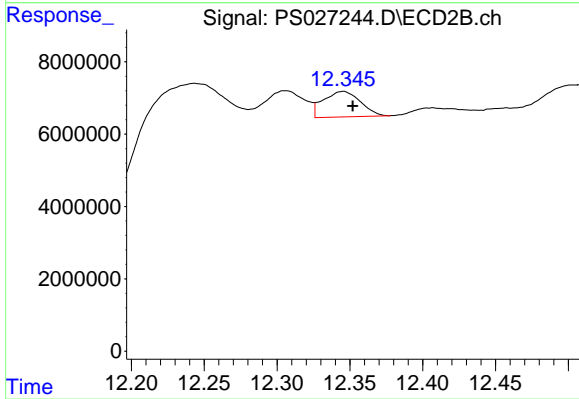
#14 DINOSEB

R.T.: 11.259 min
 Delta R.T.: 0.000 min
 Response: 162700273
 Conc: 14.56 ng/ml



#15 Picloram

R.T.: 11.047 min
 Delta R.T.: -0.002 min
 Response: 50687565
 Conc: 2.60 ng/ml



#15 Picloram

R.T.: 12.345 min
 Delta R.T.: -0.007 min
 Response: 12475592
 Conc: N.D.