

Data Path : Z:\pestpcbsrv\HPCHEM1\ECD_S\Data\PS072925\
 Data File : PS031281.D
 Signal(s) : Signal #1: ECD1A.ch Signal #2: ECD2B.ch
 Acq On : 29 Jul 2025 18:55
 Operator : AR\AJ
 Sample : I.BLK
 Misc :
 ALS Vial : 2 Sample Multiplier: 1

Instrument :
 ECD_S
 ClientSampleId :
 I.BLK

Integration File signal 1: autoint1.e
 Integration File signal 2: autoint2.e
 Quant Time: Jul 30 02:06:49 2025
 Quant Method : Z:\pestpcbsrv\HPCHEM1\ECD_S\Method\PS072925.M
 Quant Title : 8080.M
 QLast Update : Tue Jul 29 18:38:25 2025
 Response via : Initial Calibration
 Integrator: ChemStation

Volume Inj. : 1 µl
 Signal #1 Phase : ZB-MR1 Signal #2 Phase: ZB-MR2
 Signal #1 Info : 30M x 0.32mm x0.5 Signal #2 Info : 30M x 0.32mm x 0.25µm

Compound	RT#1	RT#2	Resp#1	Resp#2	ng/ml	ng/ml

System Monitoring Compounds						
4) S 2,4-DCAA	7.315	7.768	1119.0E6	406.9E6	384.089	487.239 #
Target Compounds						
3) T 4-Nitroph...	7.108	0.000	4817589	0	4.731	N.D. #
5) T DICAMBA	7.505	0.000	969820	0	<MDL	N.D. #
6) T MCPP	7.703	0.000	579880	0	<MDL	N.D. #
7) T MCPA	7.848	8.270f	258275	50765884	<MDL	19.571 #
8) T DICHLORPROP	8.215	0.000	538789	0	<MDL	N.D. #
9) T 2,4-D	0.000	9.034	0	737515	N.D.	<MDL
10) T Pentachlo...	8.744	9.539	4362385	9809699	<MDL	<MDL #
11) T 2,4,5-TP ...	9.317	9.933	4418914	26776250	<MDL	2.108 #
12) T 2,4,5-T	9.609	10.389f	266781	17973714	<MDL	1.541 #
13) T 2,4-DB	10.184	0.000	1719192	0	<MDL	N.D. #
14) T DINOSEB	11.426	11.300	1795557	2593443	<MDL	<MDL #
15) T Picloram	11.229	0.000	2640863	0	<MDL	N.D. #
16) T DCPA	11.703	12.352	6220990	3161480	<MDL	<MDL #

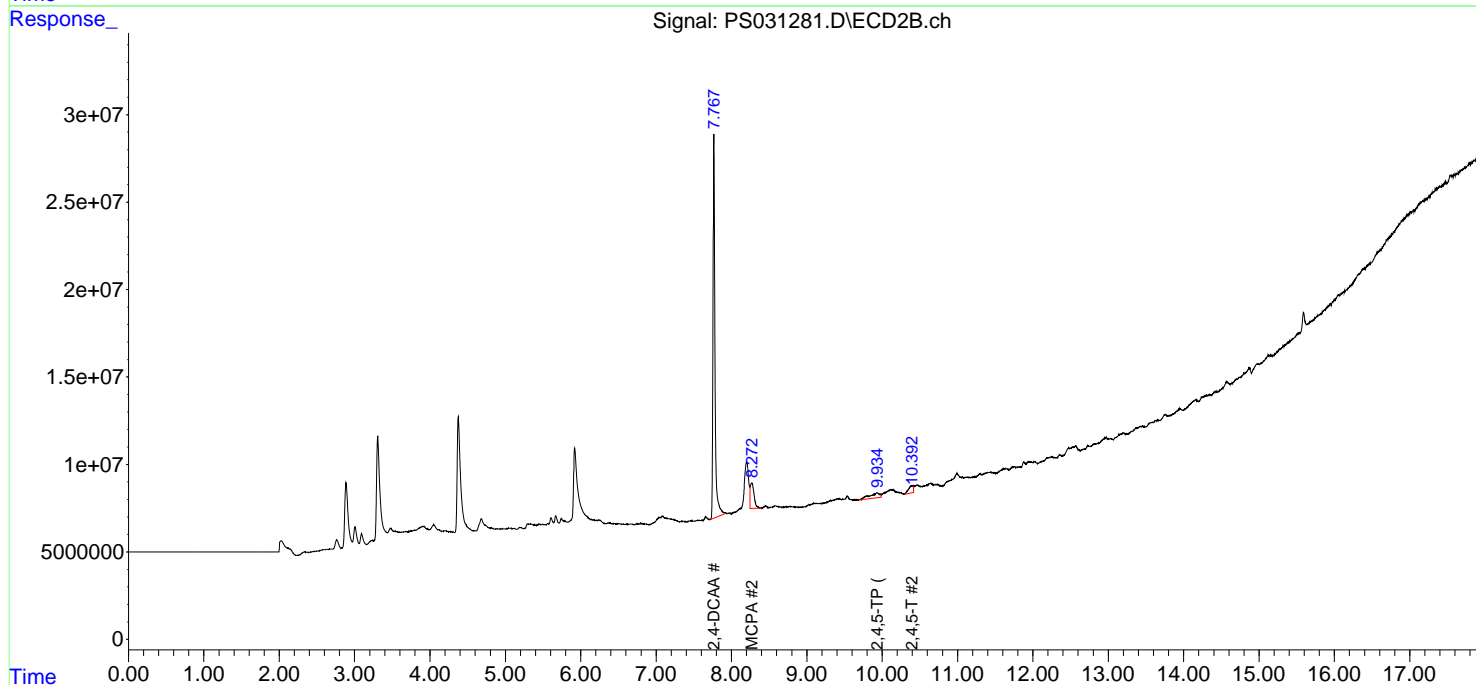
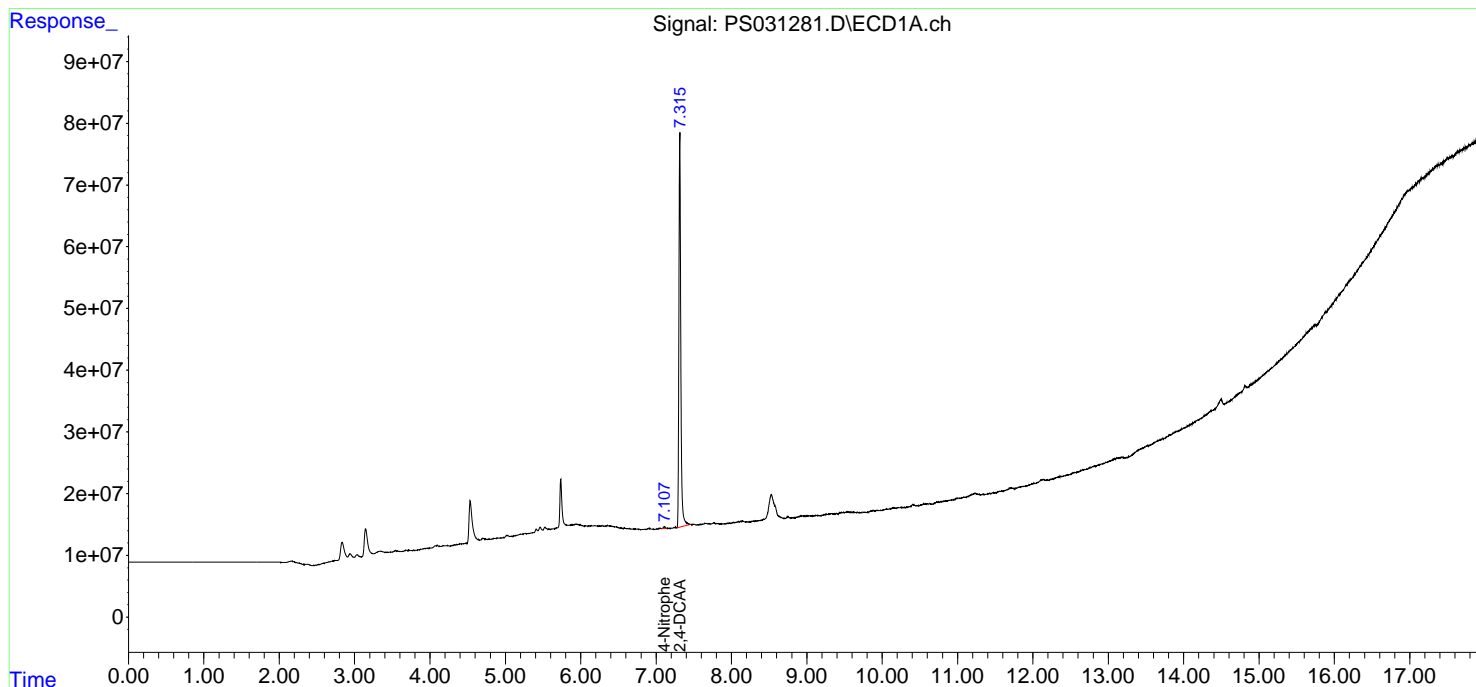
(f)=RT Delta > 1/2 Window (#)=Amounts differ by > 25% (m)=manual int.

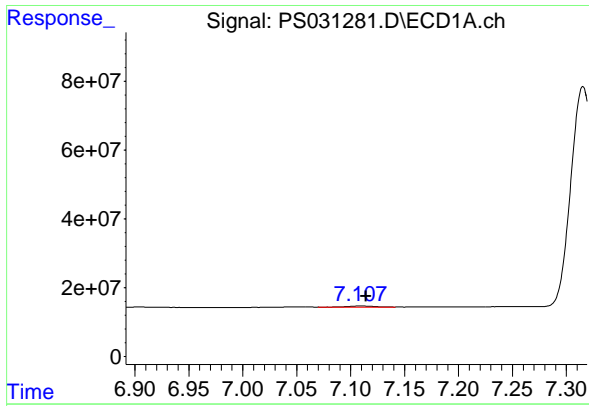
Data Path : Z:\pestpcbsrv\HPCHEM1\ECD_S\Data\PS072925\
 Data File : PS031281.D
 Signal(s) : Signal #1: ECD1A.ch Signal #2: ECD2B.ch
 Acq On : 29 Jul 2025 18:55
 Operator : AR\AJ
 Sample : I.BLK
 Misc :
 ALS Vial : 2 Sample Multiplier: 1

Instrument :
 ECD_S
 ClientSampleId :
 I.BLK

Integration File signal 1: autoint1.e
 Integration File signal 2: autoint2.e
 Quant Time: Jul 30 02:06:49 2025
 Quant Method : Z:\pestpcbsrv\HPCHEM1\ECD_S\Method\PS072925.M
 Quant Title : 8080.M
 QLast Update : Tue Jul 29 18:38:25 2025
 Response via : Initial Calibration
 Integrator: ChemStation

Volume Inj. : 1 µl
 Signal #1 Phase : ZB-MR1 Signal #2 Phase: ZB-MR2
 Signal #1 Info : 30M x 0.32mm x 0.5 Signal #2 Info : 30M x 0.32mm x 0.25µm

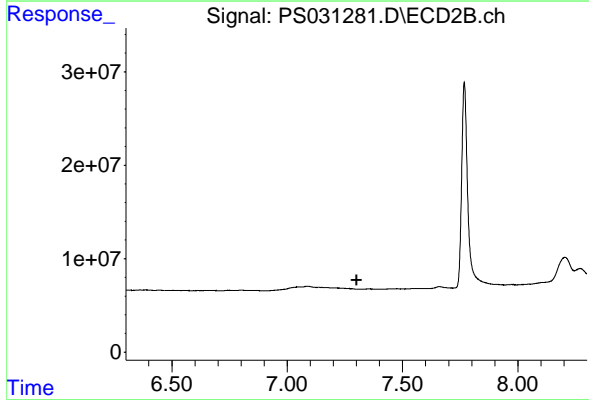




#3 4-Nitrophenol

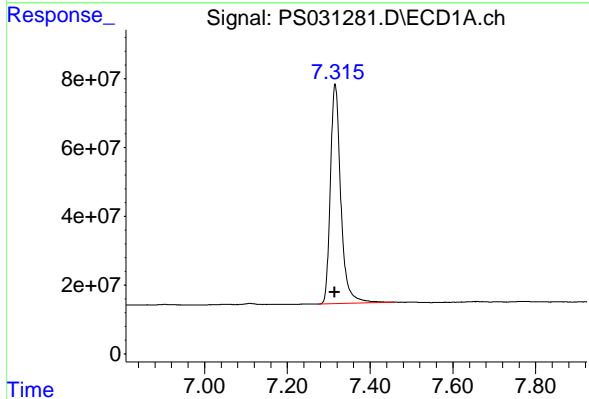
R.T.: 7.108 min
 Delta R.T.: -0.006 min
 Response: 4817589
 Conc: 4.73 ng/ml

Instrument :
 ECD_S
 ClientSampleId :
 I.BLK



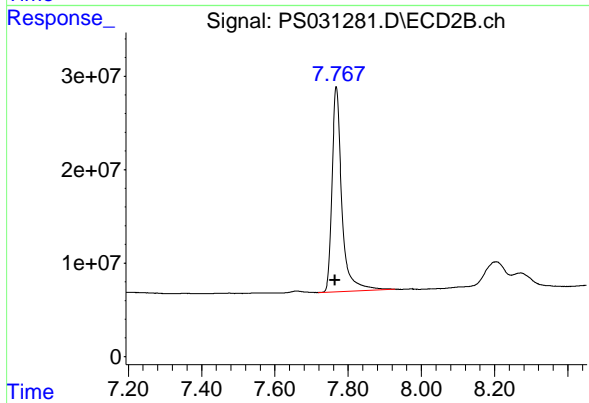
#3 4-Nitrophenol

R.T.: 0.000 min
 Exp R.T. : 7.300 min
 Response: 0
 Conc: N.D.



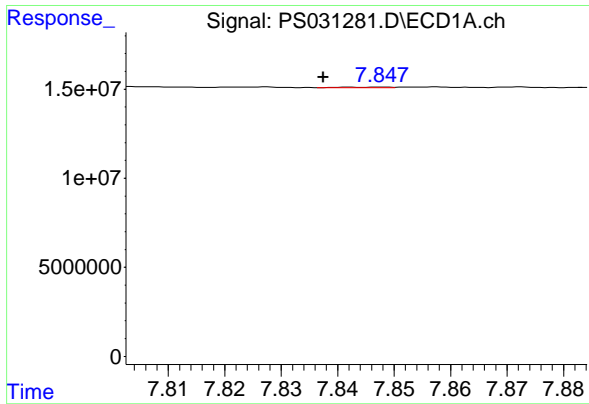
#4 2,4-DCAA

R.T.: 7.315 min
 Delta R.T.: 0.000 min
 Response: 1119005458
 Conc: 384.09 ng/ml



#4 2,4-DCAA

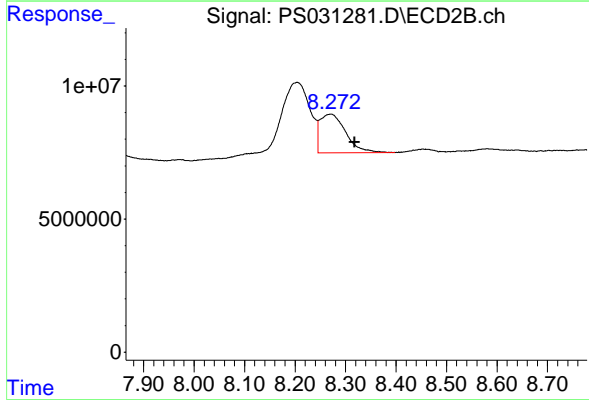
R.T.: 7.768 min
 Delta R.T.: 0.004 min
 Response: 406884052
 Conc: 487.24 ng/ml



#7 MCPA

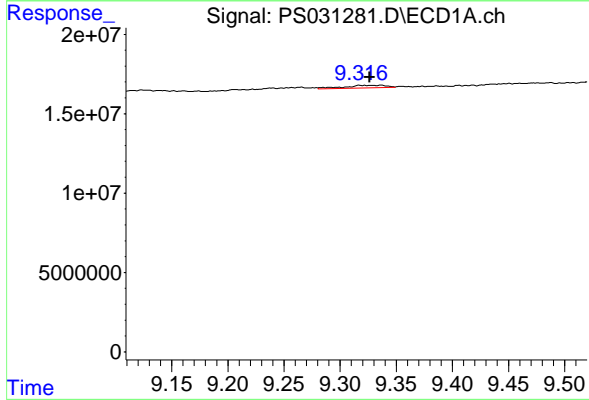
R.T.: 7.848 min
 Delta R.T.: 0.010 min
 Response: 258275
 Conc: N.D.

Instrument :
 ECD_S
 ClientSampleId :
 I.BLK



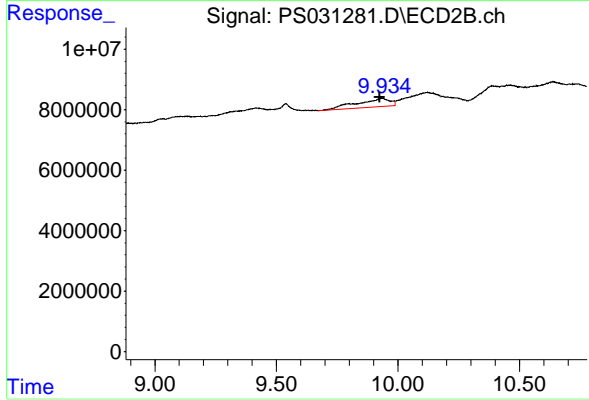
#7 MCPA

R.T.: 8.270 min
 Delta R.T.: -0.048 min
 Response: 50765884
 Conc: 19.57 ug/ml



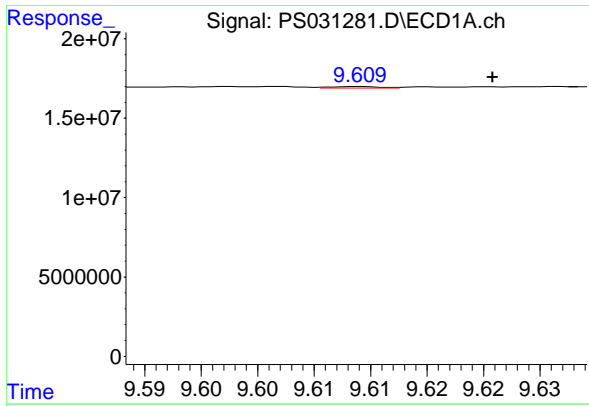
#11 2,4,5-TP (SILVEX)

R.T.: 9.317 min
 Delta R.T.: -0.009 min
 Response: 4418914
 Conc: N.D.



#11 2,4,5-TP (SILVEX)

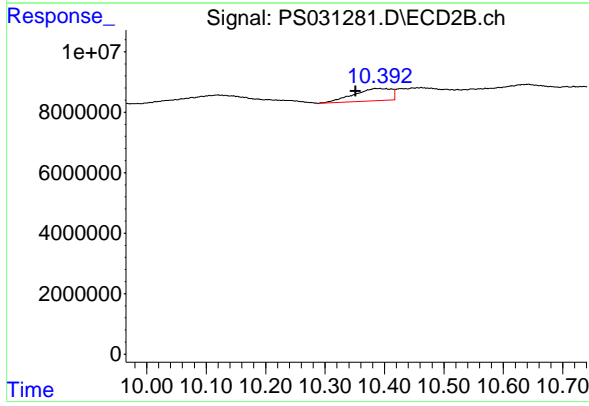
R.T.: 9.933 min
 Delta R.T.: 0.009 min
 Response: 26776250
 Conc: 2.11 ng/ml



#12 2,4,5-T

R.T.: 9.609 min
 Delta R.T.: -0.012 min
 Response: 266781
 Conc: N.D.

Instrument :
 ECD_S
 ClientSampleId :
 I.BLK



#12 2,4,5-T

R.T.: 10.389 min
 Delta R.T.: 0.038 min
 Response: 17973714
 Conc: 1.54 ng/ml