

Data Path : Z:\pestpcbsrv\HPCHEM1\ECD\_S\Data\PS072925\  
 Data File : PS031295.D  
 Signal(s) : Signal #1: ECD1A.ch Signal #2: ECD2B.ch  
 Acq On : 30 Jul 2025 00:33  
 Operator : AR\AJ  
 Sample : PB169037BS  
 Misc :  
 ALS Vial : 19 Sample Multiplier: 1

Instrument :  
 ECD\_S  
 ClientSampleId :

Integration File signal 1: autoint1.e  
 Integration File signal 2: autoint2.e  
 Quant Time: Jul 30 02:09:42 2025  
 Quant Method : Z:\pestpcbsrv\HPCHEM1\ECD\_S\Method\PS072925.M  
 Quant Title : 8080.M  
 QLast Update : Tue Jul 29 18:38:25 2025  
 Response via : Initial Calibration  
 Integrator: ChemStation

Volume Inj. : 1 µl  
 Signal #1 Phase : ZB-MR2 Signal #2 Phase: ZB-MR2  
 Signal #1 Info : 30M x 0.32mm x0.5 Signal #2 Info : 30M x 0.32mm x 0.25µm

Compound	RT#1	RT#2	Resp#1	Resp#2	ng/ml	ng/ml
-----						
System Monitoring Compounds						
4) S 2,4-DCAA	7.313	7.765	1515.9E6	420.6E6	520.302	503.651
Target Compounds						
1) T Dalapon	2.686	2.703	2259.1E6	1138.4E6	468.248	463.478
2) T 3,5-DICHL...	6.476	6.712	1979.3E6	612.8E6	464.306	474.169
3) T 4-Nitroph...	7.115	7.306	475.2E6	564.3E6	466.747	437.147
5) T DICAMBA	7.500	7.964	6230.0E6	2539.7E6	482.179	468.497
6) T MCPP	7.679	8.061	364.5E6	81430768	45.326	47.638
7) T MCPA	7.829	8.309	460.6E6	124.9E6	47.115	48.151
8) T DICHLORPROP	8.211	8.684	1460.0E6	623.2E6	480.259	479.365
9) T 2,4-D	8.444	9.025	1223.7E6	658.9E6	471.870	472.137
10) T Pentachlo...	8.742	9.536	23647.5E6	16530.8E6	519.967	493.511
11) T 2,4,5-TP ...	9.324	9.923	8061.8E6	6147.6E6	483.868	483.957
12) T 2,4,5-T	9.619	10.352	6162.6E6	5541.7E6	463.327	475.088
13) T 2,4-DB	10.196	10.921	788.3E6	455.6E6	451.192	471.680
14) T DINOSEB	11.403	11.300	5344.6E6	4374.2E6	466.229	468.338
15) T Picloram	11.225	12.422	5082.5E6	7601.6E6	434.042	444.669
16) T DCPA	11.702	12.344	10050.9E6	9111.7E6	484.703	488.519

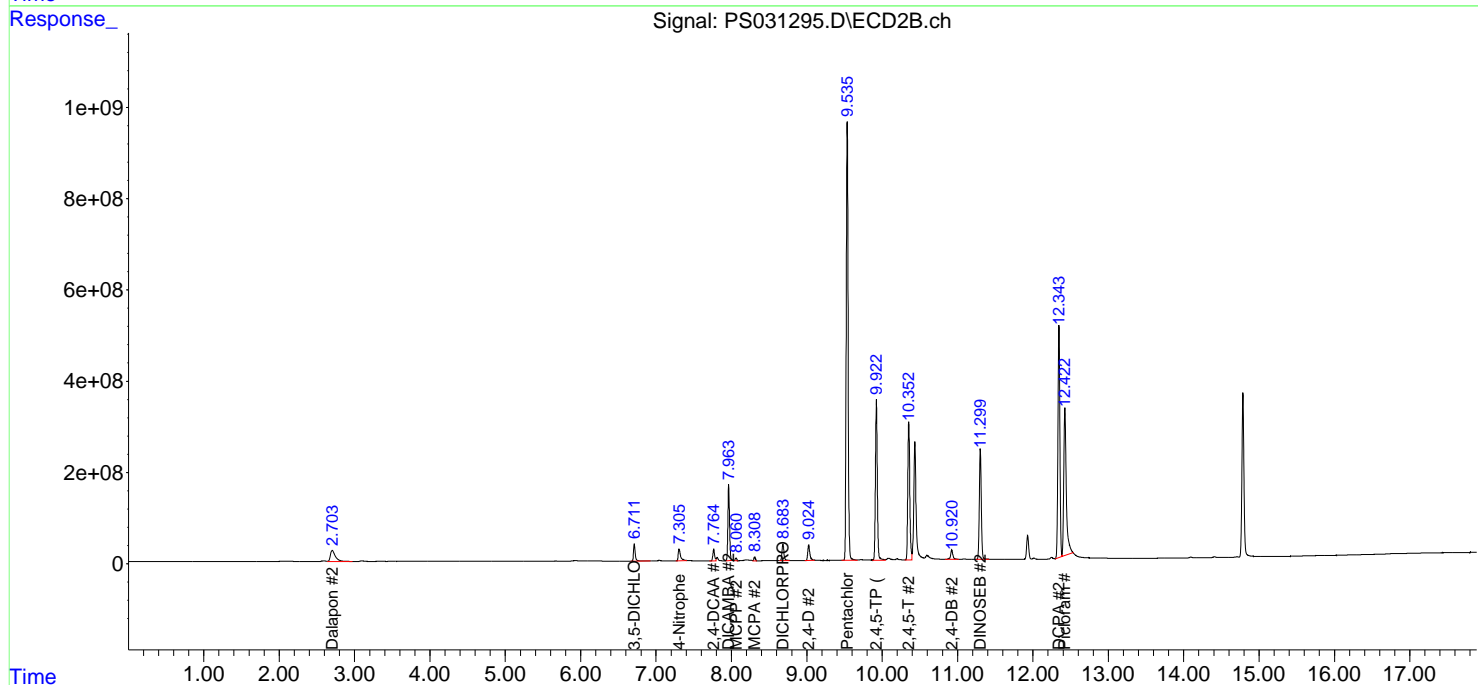
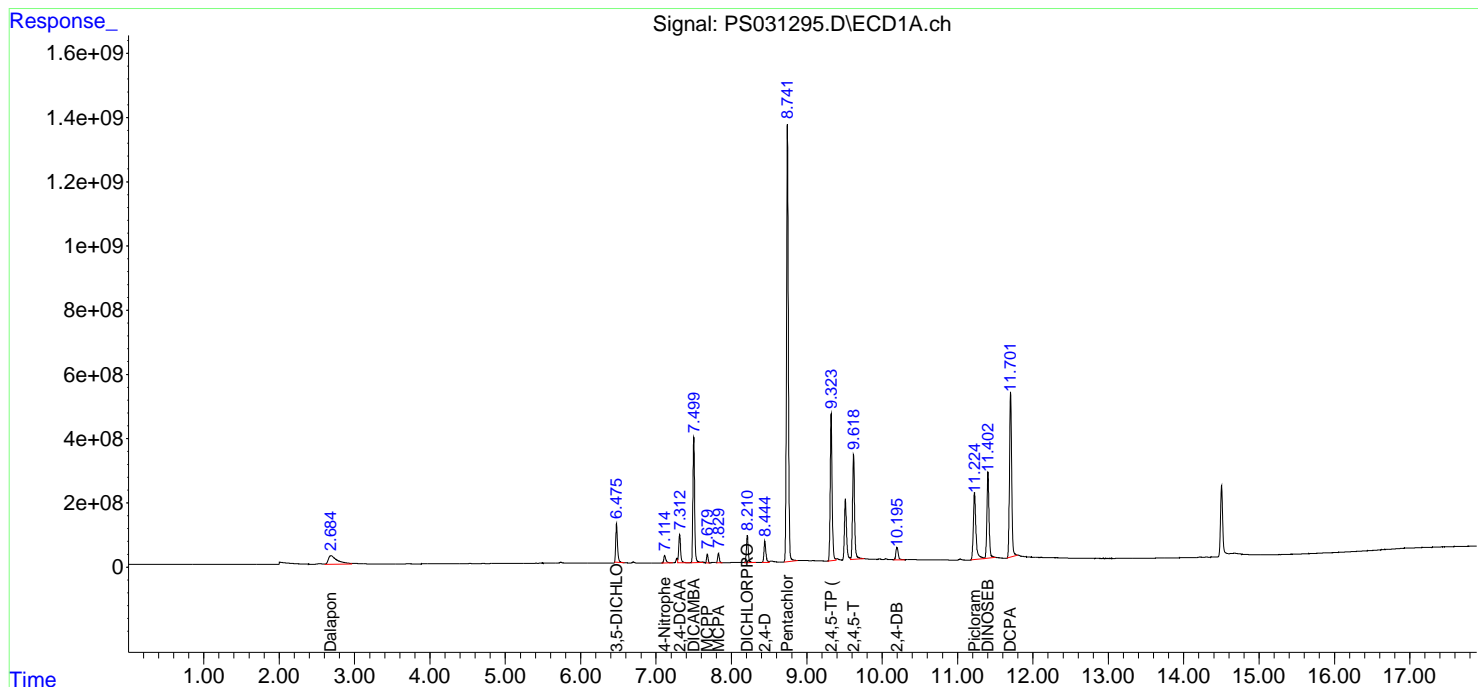
(f)=RT Delta > 1/2 Window (#)=Amounts differ by > 25% (m)=manual int.

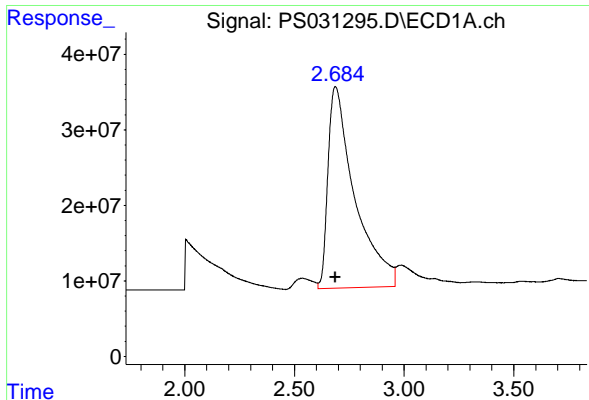
Data Path : Z:\pestpcbsrv\HPCHEM1\ECD\_S\Data\PS072925\  
 Data File : PS031295.D  
 Signal(s) : Signal #1: ECD1A.ch Signal #2: ECD2B.ch  
 Acq On : 30 Jul 2025 00:33  
 Operator : AR\AJ  
 Sample : PB169037BS  
 Misc :  
 ALS Vial : 19 Sample Multiplier: 1

Instrument :  
 ECD\_S  
 ClientSampleId :

Integration File signal 1: autoint1.e  
 Integration File signal 2: autoint2.e  
 Quant Time: Jul 30 02:09:42 2025  
 Quant Method : Z:\pestpcbsrv\HPCHEM1\ECD\_S\Method\PS072925.M  
 Quant Title : 8080.M  
 QLast Update : Tue Jul 29 18:38:25 2025  
 Response via : Initial Calibration  
 Integrator: ChemStation

Volume Inj. : 1 µl  
 Signal #1 Phase : ZB-MR2 Signal #2 Phase: ZB-MR2  
 Signal #1 Info : 30M x 0.32mm x 0.5 Signal #2 Info : 30M x 0.32mm x 0.25µm

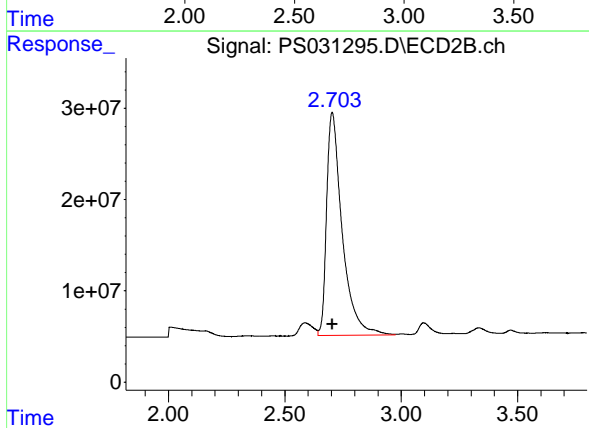




#1 Dalapon

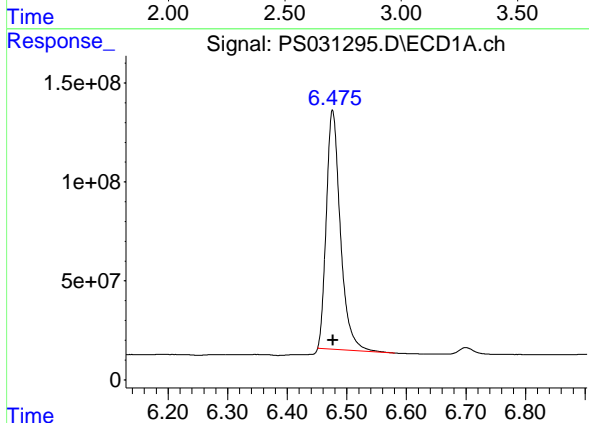
R.T.: 2.686 min  
Delta R.T.: -0.001 min  
Response: 2259089737  
Conc: 468.25 ng/ml

Instrument :  
ECD\_S  
ClientSampleId :



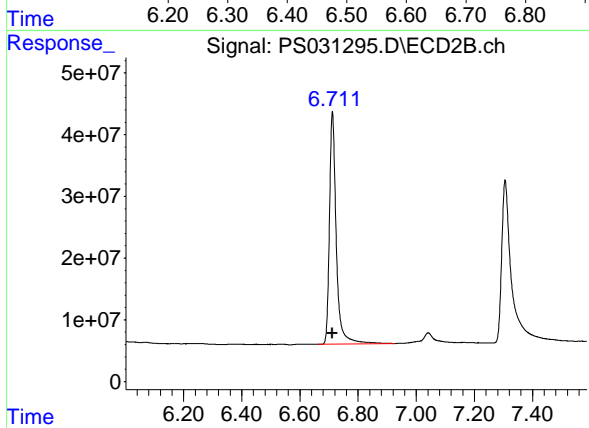
#1 Dalapon

R.T.: 2.703 min  
Delta R.T.: 0.000 min  
Response: 1138387319  
Conc: 463.48 ng/ml



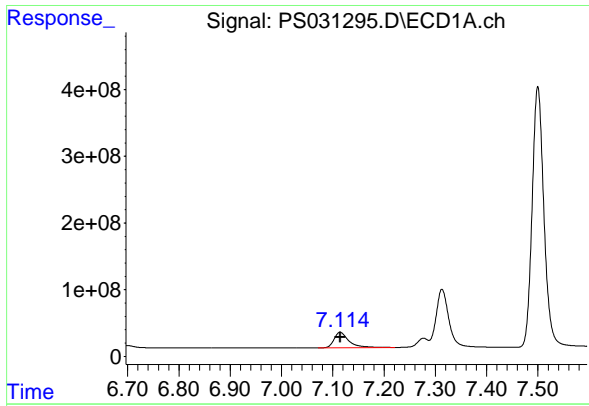
#2 3,5-DICHLOROBENZOIC ACID

R.T.: 6.476 min  
Delta R.T.: 0.000 min  
Response: 1979303907  
Conc: 464.31 ng/ml



#2 3,5-DICHLOROBENZOIC ACID

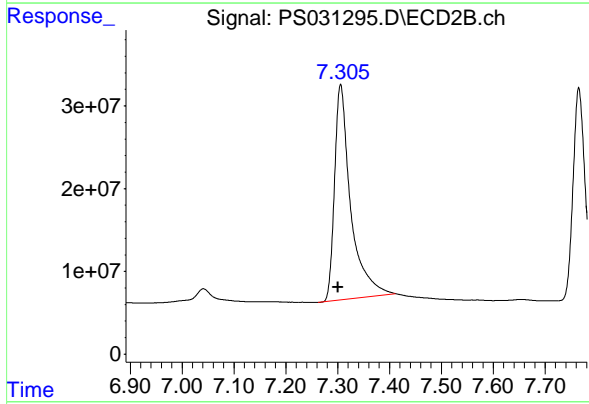
R.T.: 6.712 min  
Delta R.T.: 0.001 min  
Response: 612754227  
Conc: 474.17 ng/ml



#3 4-Nitrophenol

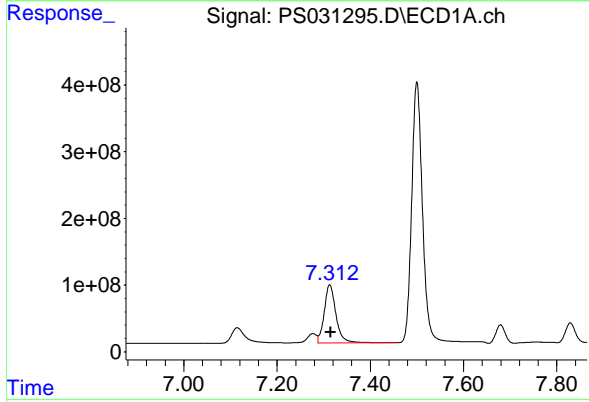
R.T.: 7.115 min  
 Delta R.T.: 0.000 min  
 Response: 475242388  
 Conc: 466.75 ng/ml

Instrument :  
 ECD\_S  
 ClientSampleId :



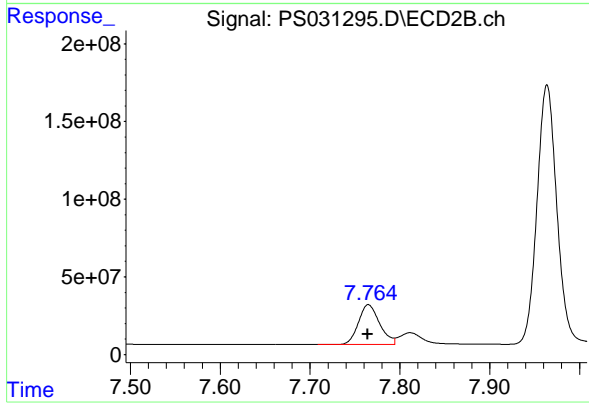
#3 4-Nitrophenol

R.T.: 7.306 min  
 Delta R.T.: 0.006 min  
 Response: 564318652  
 Conc: 437.15 ng/ml



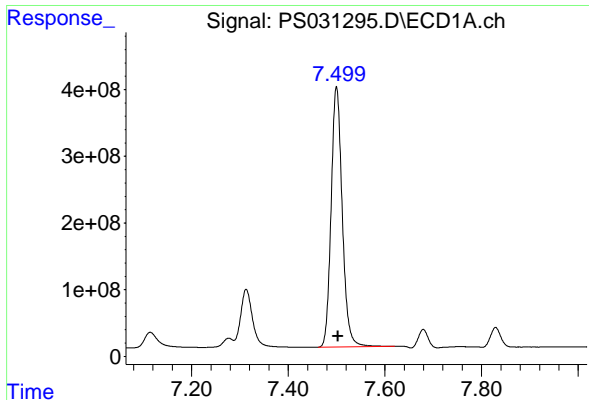
#4 2,4-DCAA

R.T.: 7.313 min  
 Delta R.T.: -0.002 min  
 Response: 1515850254  
 Conc: 520.30 ng/ml



#4 2,4-DCAA

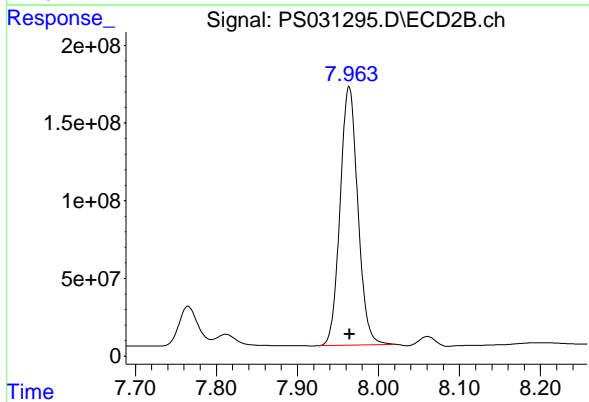
R.T.: 7.765 min  
 Delta R.T.: 0.000 min  
 Response: 420589464  
 Conc: 503.65 ng/ml



#5 DICAMBA

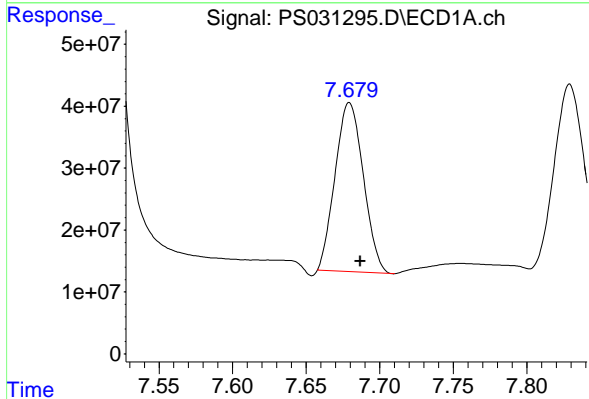
R.T.: 7.500 min  
 Delta R.T.: -0.003 min  
 Response: 6230042978  
 Conc: 482.18 ng/ml

Instrument :  
 ECD\_S  
 ClientSampleId :



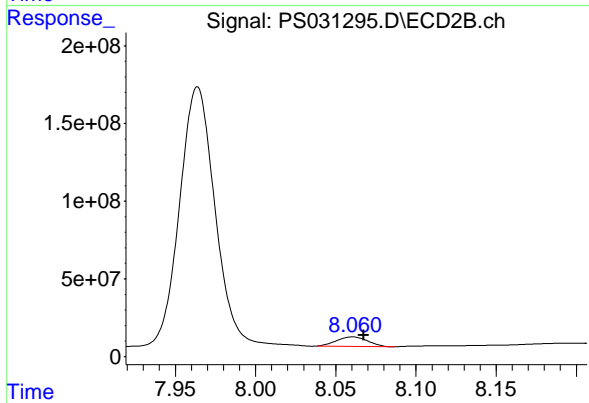
#5 DICAMBA

R.T.: 7.964 min  
 Delta R.T.: 0.000 min  
 Response: 2539651815  
 Conc: 468.50 ng/ml



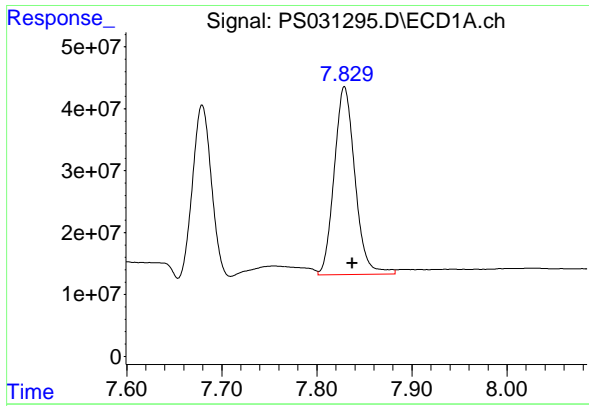
#6 MCPP

R.T.: 7.679 min  
 Delta R.T.: -0.007 min  
 Response: 364546472  
 Conc: 45.33 ug/ml



#6 MCPP

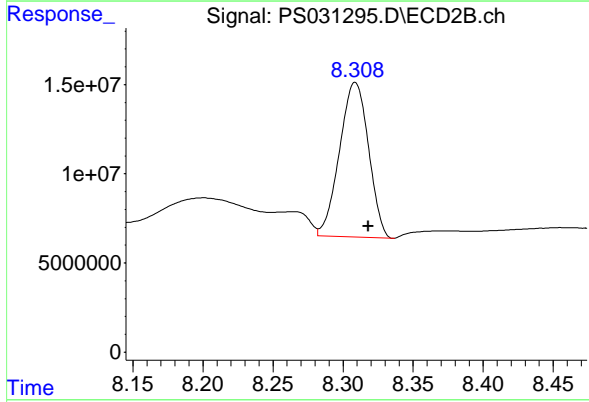
R.T.: 8.061 min  
 Delta R.T.: -0.007 min  
 Response: 81430768  
 Conc: 47.64 ug/ml



#7 MCPA

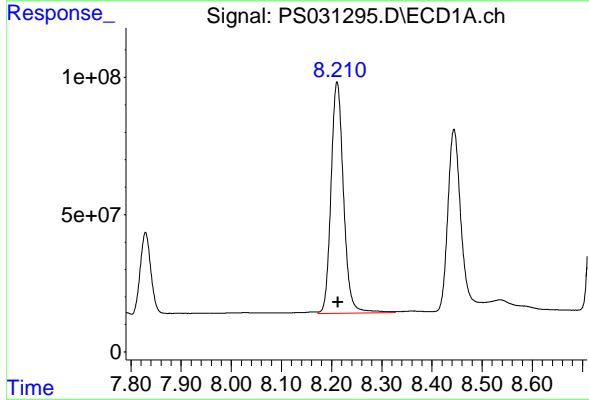
R.T.: 7.829 min  
 Delta R.T.: -0.008 min  
 Response: 460597441  
 Conc: 47.12 ug/ml

Instrument :  
 ECD\_S  
 ClientSampleId :



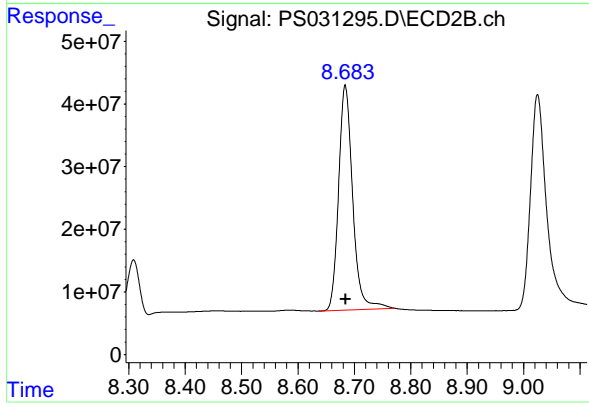
#7 MCPA

R.T.: 8.309 min  
 Delta R.T.: -0.009 min  
 Response: 124900760  
 Conc: 48.15 ug/ml



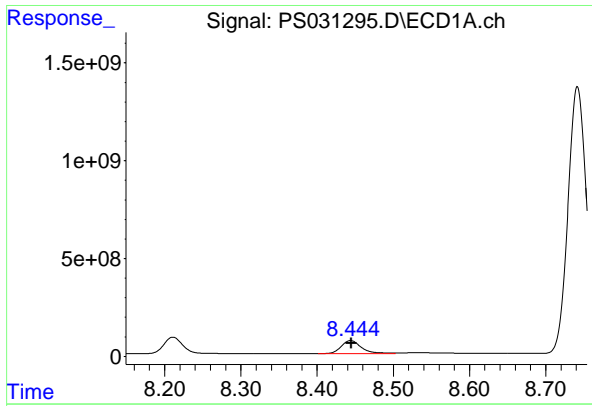
#8 DICHLORPROP

R.T.: 8.211 min  
 Delta R.T.: -0.002 min  
 Response: 1459992342  
 Conc: 480.26 ng/ml



#8 DICHLORPROP

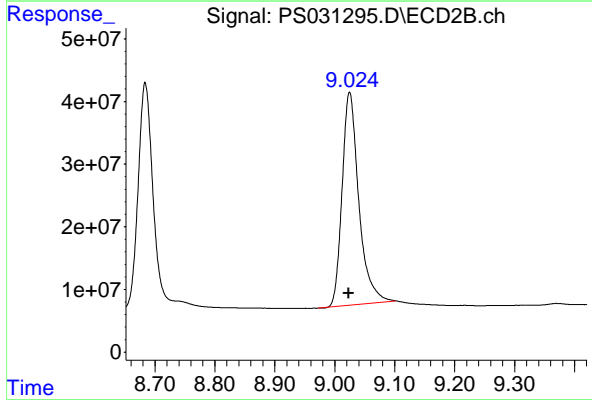
R.T.: 8.684 min  
 Delta R.T.: 0.000 min  
 Response: 623202212  
 Conc: 479.37 ng/ml



#9 2,4-D

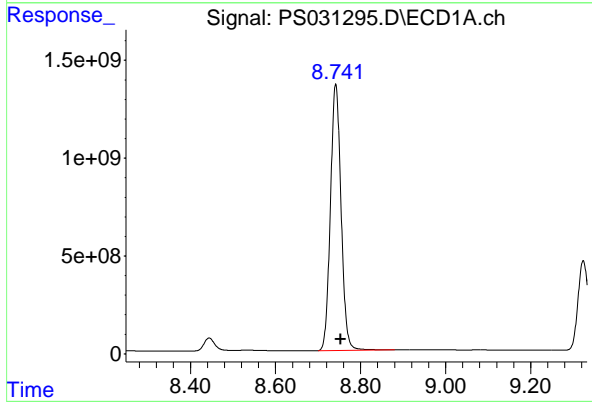
R.T.: 8.444 min  
Delta R.T.: -0.001 min  
Response: 1223718964  
Conc: 471.87 ng/ml

Instrument :  
ECD\_S  
ClientSampleId :



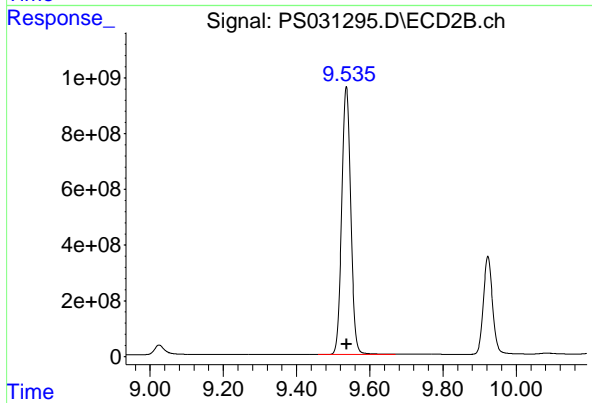
#9 2,4-D

R.T.: 9.025 min  
Delta R.T.: 0.002 min  
Response: 658880983  
Conc: 472.14 ng/ml



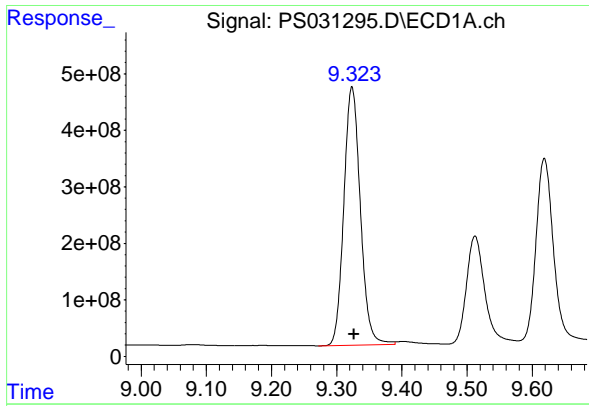
#10 Pentachlorophenol

R.T.: 8.742 min  
Delta R.T.: -0.012 min  
Response: 23647450900  
Conc: 519.97 ng/ml



#10 Pentachlorophenol

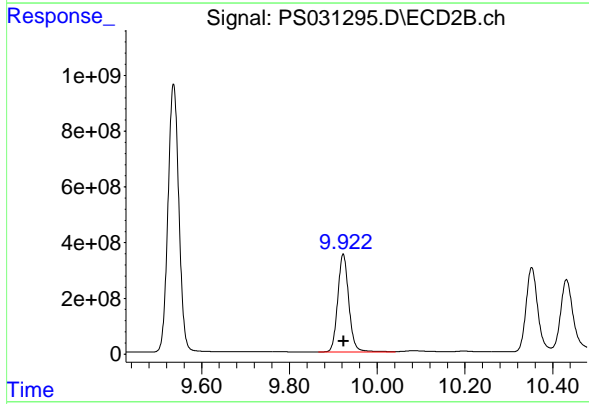
R.T.: 9.536 min  
Delta R.T.: -0.001 min  
Response: 16530847314  
Conc: 493.51 ng/ml



#11 2,4,5-TP (SILVEX)

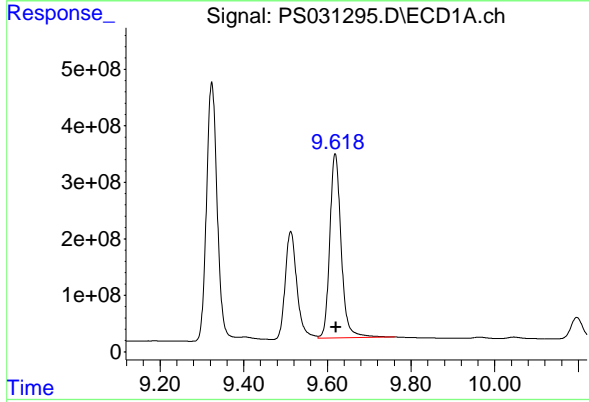
R.T.: 9.324 min  
 Delta R.T.: -0.003 min  
 Response: 8061840429  
 Conc: 483.87 ng/ml

Instrument :  
 ECD\_S  
 ClientSampleId :



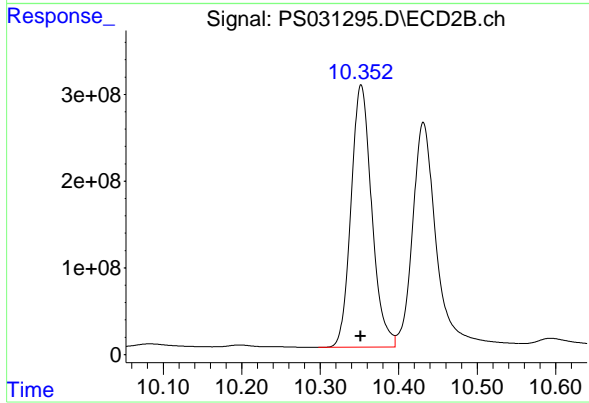
#11 2,4,5-TP (SILVEX)

R.T.: 9.923 min  
 Delta R.T.: -0.001 min  
 Response: 6147605358  
 Conc: 483.96 ng/ml



#12 2,4,5-T

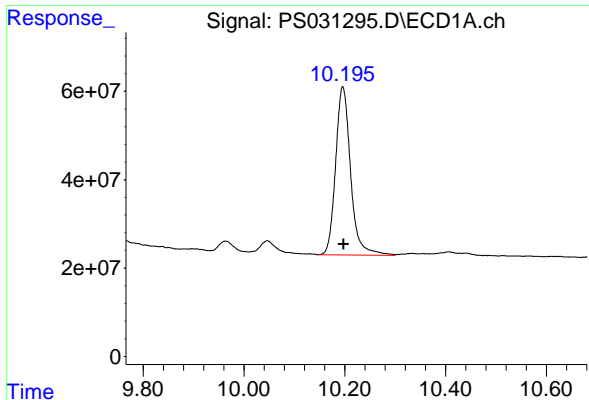
R.T.: 9.619 min  
 Delta R.T.: -0.002 min  
 Response: 6162587582  
 Conc: 463.33 ng/ml



#12 2,4,5-T

R.T.: 10.352 min  
 Delta R.T.: 0.000 min  
 Response: 5541739807  
 Conc: 475.09 ng/ml

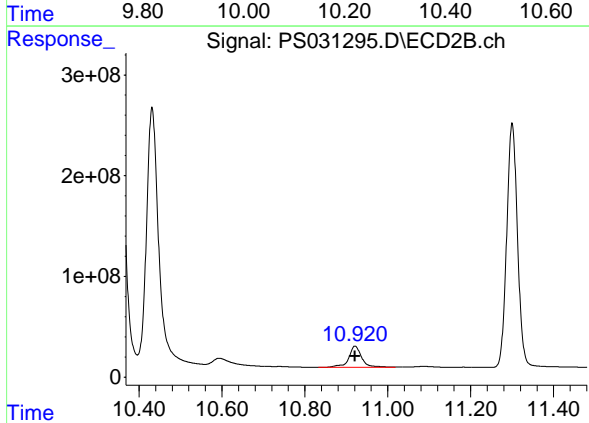




#13 2,4-DB

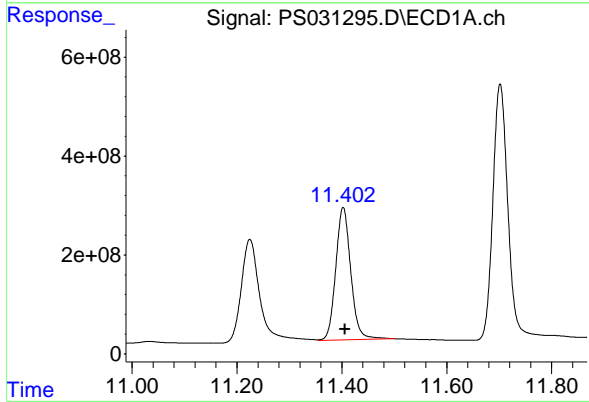
R.T.: 10.196 min  
 Delta R.T.: -0.002 min  
 Response: 788346242  
 Conc: 451.19 ng/ml

Instrument :  
 ECD\_S  
 ClientSampleId :



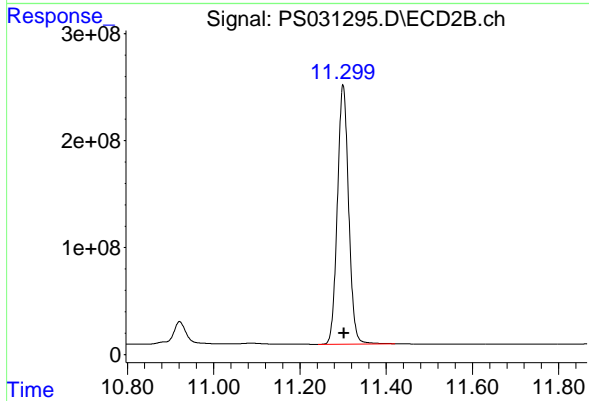
#13 2,4-DB

R.T.: 10.921 min  
 Delta R.T.: 0.000 min  
 Response: 455574647  
 Conc: 471.68 ng/ml



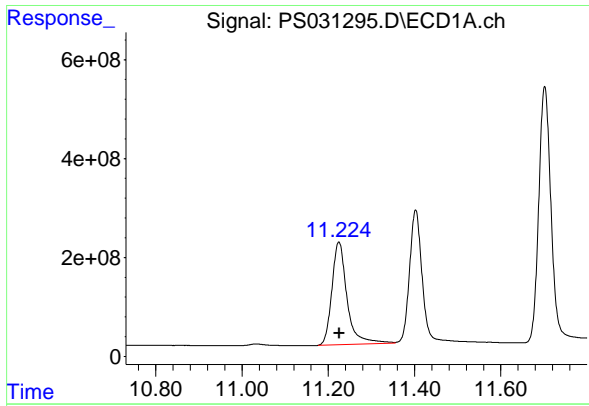
#14 DINOSEB

R.T.: 11.403 min  
 Delta R.T.: -0.004 min  
 Response: 5344633095  
 Conc: 466.23 ng/ml



#14 DINOSEB

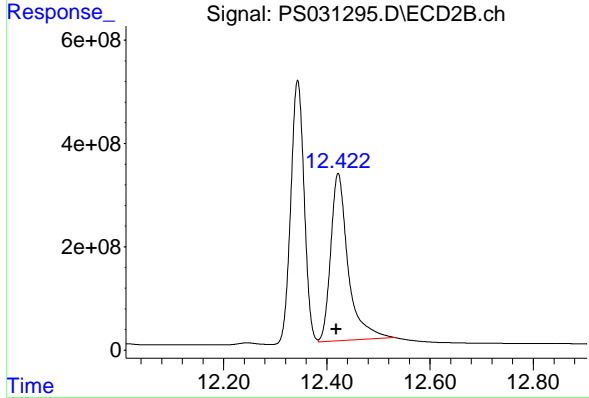
R.T.: 11.300 min  
 Delta R.T.: -0.002 min  
 Response: 4374244393  
 Conc: 468.34 ng/ml



#15 Picloram

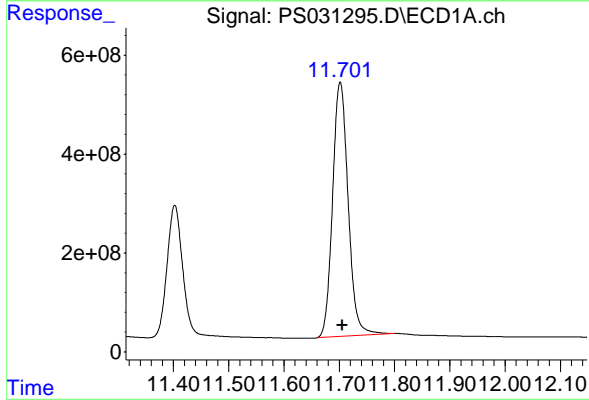
R.T.: 11.225 min  
 Delta R.T.: 0.000 min  
 Response: 5082474309  
 Conc: 434.04 ng/ml

Instrument :  
 ECD\_S  
 ClientSampleId :



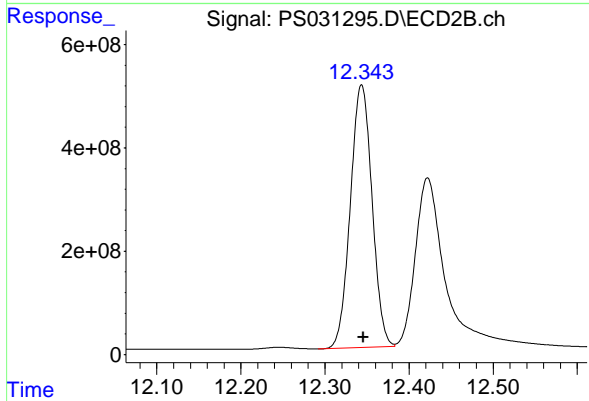
#15 Picloram

R.T.: 12.422 min  
 Delta R.T.: 0.004 min  
 Response: 7601585589  
 Conc: 444.67 ng/ml



#16 DCPA

R.T.: 11.702 min  
 Delta R.T.: -0.004 min  
 Response: 10050867900  
 Conc: 484.70 ng/ml



#16 DCPA

R.T.: 12.344 min  
 Delta R.T.: -0.002 min  
 Response: 9111742870  
 Conc: 488.52 ng/ml