

Data Path : Z:\pestpcbsrv\HPCHEM1\ECD_S\Data\PS072925\
 Data File : PS031297.D
 Signal(s) : Signal #1: ECD1A.ch Signal #2: ECD2B.ch
 Acq On : 30 Jul 2025 01:20
 Operator : AR\AJ
 Sample : Q2681-01
 Misc :
 ALS Vial : 21 Sample Multiplier: 1

Instrument :
 ECD_S
 ClientSampleId :

Integration File signal 1: autoint1.e
 Integration File signal 2: autoint2.e
 Quant Time: Jul 30 02:45:03 2025
 Quant Method : Z:\pestpcbsrv\HPCHEM1\ECD_S\Method\PS072925.M
 Quant Title : 8080.M
 QLast Update : Tue Jul 29 18:38:25 2025
 Response via : Initial Calibration
 Integrator: ChemStation

Volume Inj. : 1 µl
 Signal #1 Phase : ZB-MR1 Signal #2 Phase: ZB-MR2
 Signal #1 Info : 30M x 0.32mm x0.5 Signal #2 Info : 30M x 0.32mm x 0.25µm

Compound	RT#1	RT#2	Resp#1	Resp#2	ng/ml	ng/ml

System Monitoring Compounds						
4) S 2,4-DCAA	7.312	7.763	1259.4E6	392.6E6	432.282	470.120
Target Compounds						
1) T Dalapon	2.664	2.690	939.7E6	859.5E6	194.780	349.945 #
2) T 3,5-DICHL...	6.439f	6.754f	30754028	15452593	7.214	11.958 #
3) T 4-Nitroph...	7.101	7.325f	3603123	-151331	3.539	N.D. #
5) T DICAMBA	0.000	7.989	0	6039144	N.D.	1.114
6) T MCPP	0.000	8.072	0	3426092	N.D.	2.004
7) T MCPA	7.813	8.272f	5398564	30244623	<MDL	11.660 #
8) T DICHLORPROP	8.241f	8.666	5194781	5166110	1.709	3.974 #
9) T 2,4-D	0.000	8.994f	0	2054465	N.D.	1.472
10) T Pentachlo...	8.740	9.536	16982998	20279182	<MDL	<MDL #
11) T 2,4,5-TP ...	9.375f	9.910	24498694	64240698	1.470	5.057 #
12) T 2,4,5-T	9.598	10.367	51084189	27423895	3.841	2.351 #
13) T 2,4-DB	10.211	10.910	108.8E6	9324363	62.261	9.654 #
14) T DINOSEB	11.432f	11.316	1132824	51171391	<MDL	5.479 #
15) T Picloram	11.202	0.000	55112753	0	4.707	N.D. #

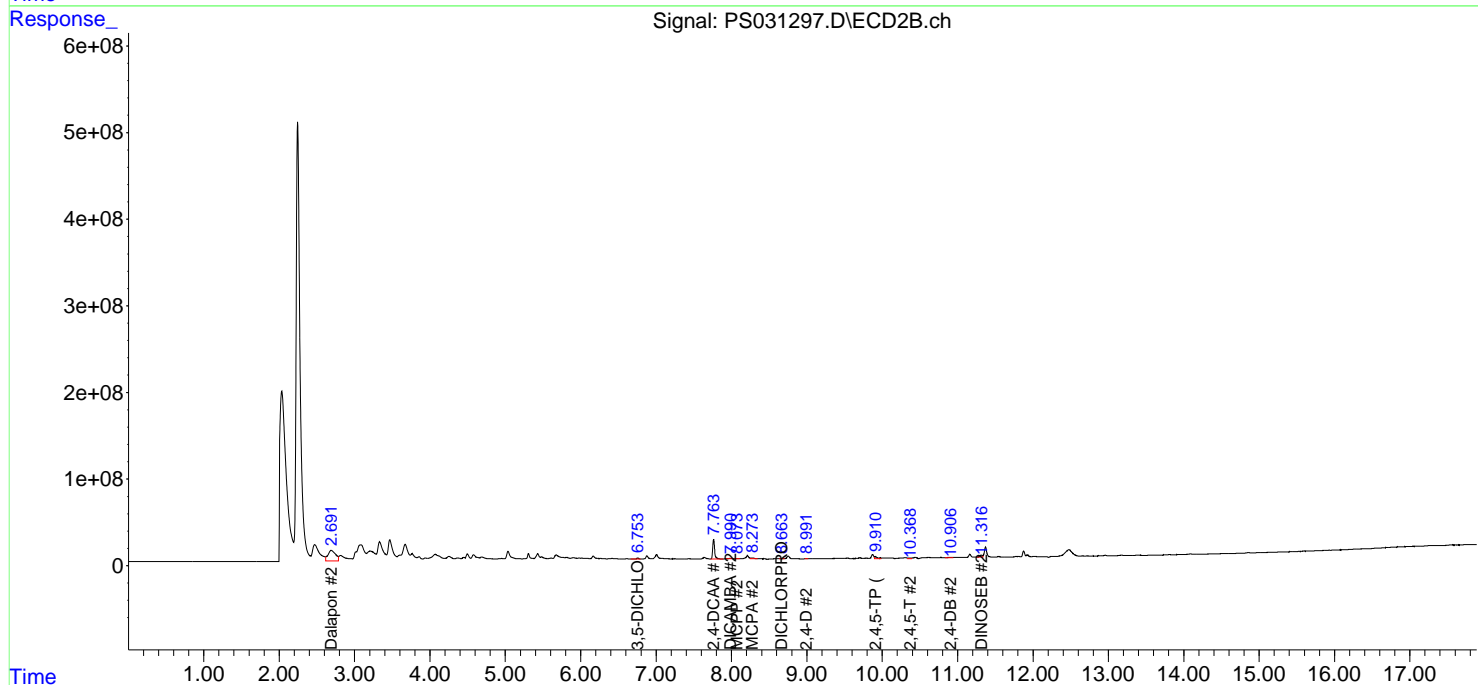
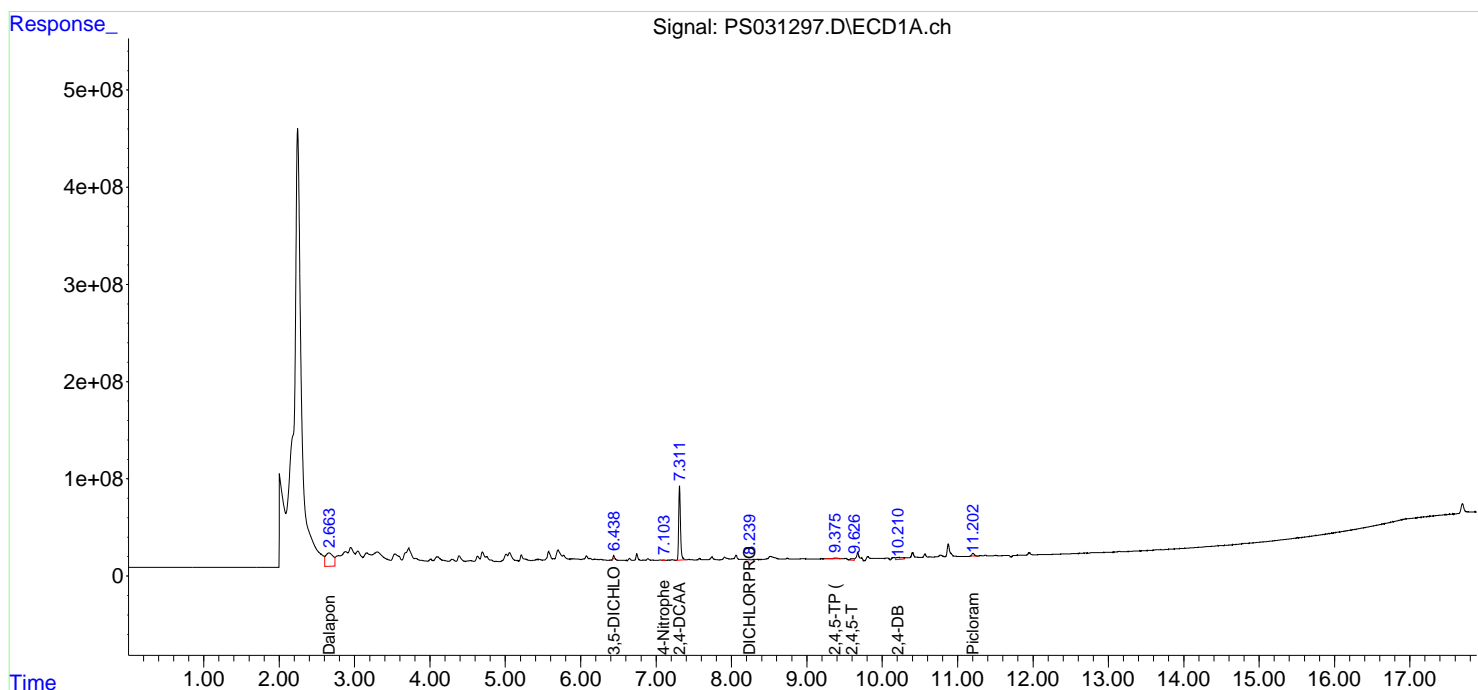
(f)=RT Delta > 1/2 Window (#)=Amounts differ by > 25% (m)=manual int.

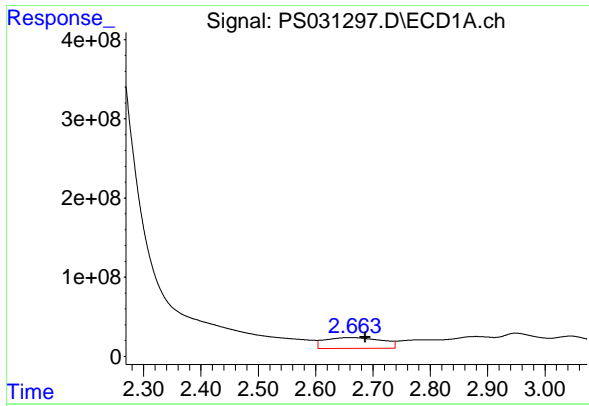
Data Path : Z:\pestpcbsrv\HPCHEM1\ECD_S\Data\PS072925\
 Data File : PS031297.D
 Signal(s) : Signal #1: ECD1A.ch Signal #2: ECD2B.ch
 Acq On : 30 Jul 2025 01:20
 Operator : AR\AJ
 Sample : Q2681-01
 Misc :
 ALS Vial : 21 Sample Multiplier: 1

Instrument :
 ECD_S
 ClientSampleId :

Integration File signal 1: autoint1.e
 Integration File signal 2: autoint2.e
 Quant Time: Jul 30 02:45:03 2025
 Quant Method : Z:\pestpcbsrv\HPCHEM1\ECD_S\Method\PS072925.M
 Quant Title : 8080.M
 QLast Update : Tue Jul 29 18:38:25 2025
 Response via : Initial Calibration
 Integrator: ChemStation

Volume Inj. : 1 µl
 Signal #1 Phase : ZB-MR1 Signal #2 Phase: ZB-MR2
 Signal #1 Info : 30M x 0.32mm x 0.5 Signal #2 Info : 30M x 0.32mm x 0.25µm

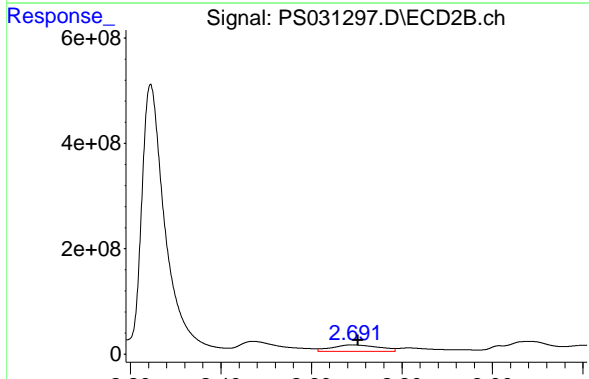




#1 Dalapon

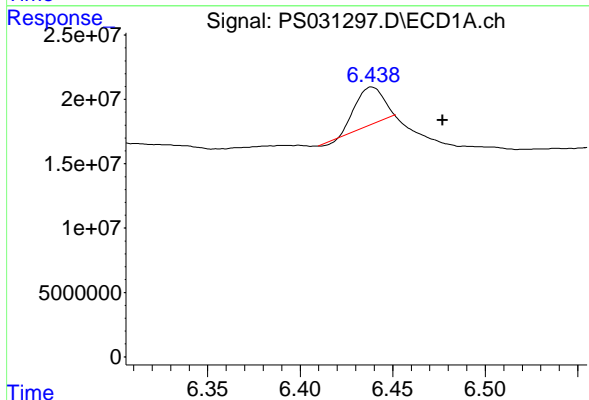
R.T.: 2.664 min
 Delta R.T.: -0.023 min
 Response: 939728234
 Conc: 194.78 ng/ml

Instrument :
 ECD_S
 ClientSampleId :



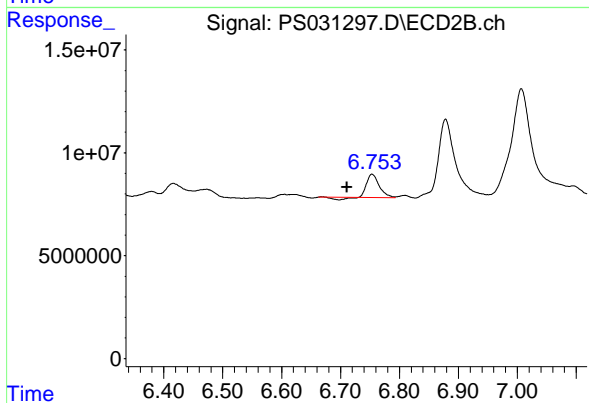
#1 Dalapon

R.T.: 2.690 min
 Delta R.T.: -0.013 min
 Response: 859530680
 Conc: 349.95 ng/ml



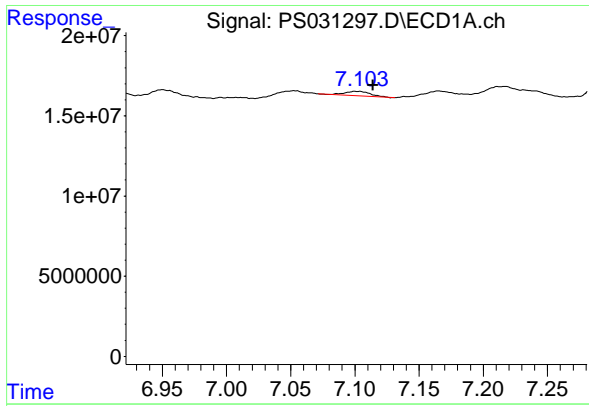
#2 3,5-DICHLOROBENZOIC ACID

R.T.: 6.439 min
 Delta R.T.: -0.038 min
 Response: 30754028
 Conc: 7.21 ng/ml



#2 3,5-DICHLOROBENZOIC ACID

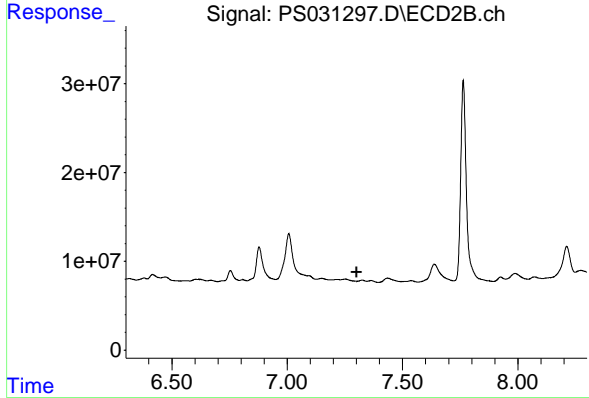
R.T.: 6.754 min
 Delta R.T.: 0.043 min
 Response: 15452593
 Conc: 11.96 ng/ml



#3 4-Nitrophenol

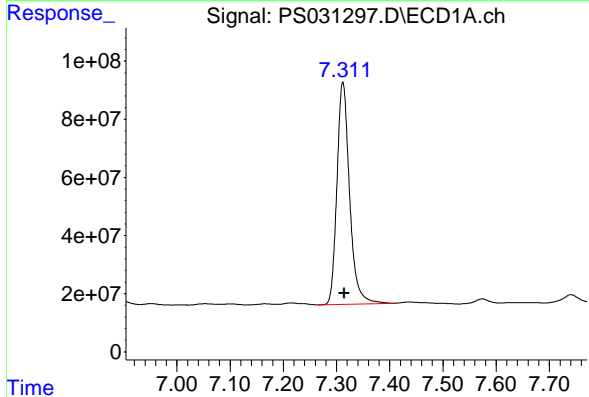
R.T.: 7.101 min
 Delta R.T.: -0.013 min
 Response: 3603123
 Conc: 3.54 ng/ml

Instrument :
 ECD_S
 ClientSampleId :



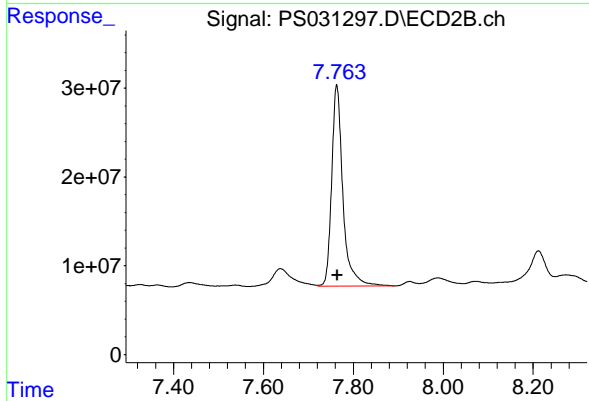
#3 4-Nitrophenol

R.T.: 7.325 min
 Delta R.T.: 0.025 min
 Response: -151331
 Conc: N.D.



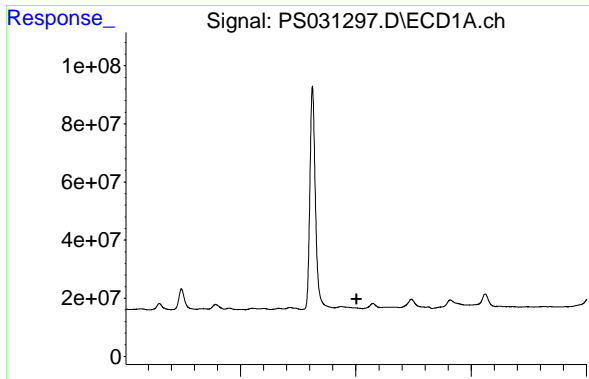
#4 2,4-DCAA

R.T.: 7.312 min
 Delta R.T.: -0.003 min
 Response: 1259412555
 Conc: 432.28 ng/ml



#4 2,4-DCAA

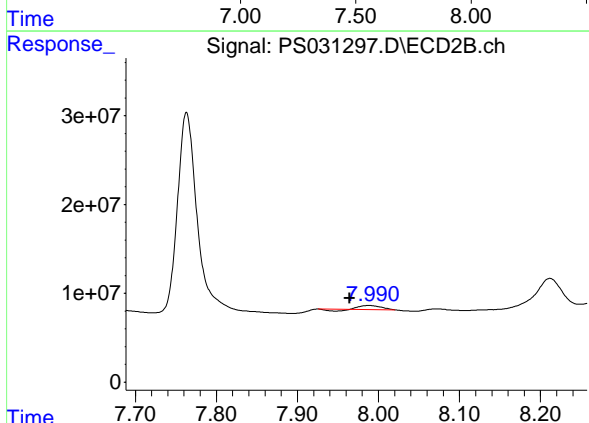
R.T.: 7.763 min
 Delta R.T.: 0.000 min
 Response: 392588056
 Conc: 470.12 ng/ml



#5 DICAMBA

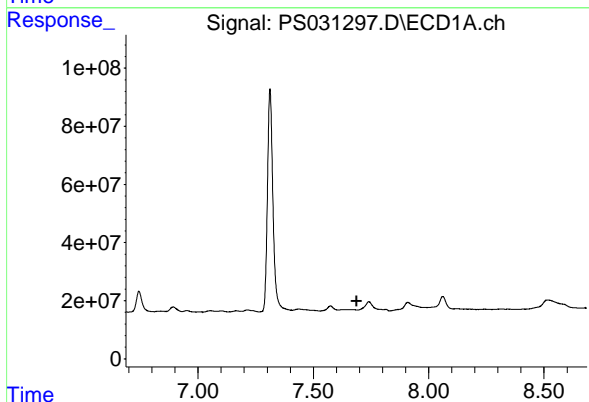
R.T.: 0.000 min
 Exp R.T.: 7.503 min
 Response: 0
 Conc: N.D.

Instrument :
 ECD_S
 ClientSampleId :



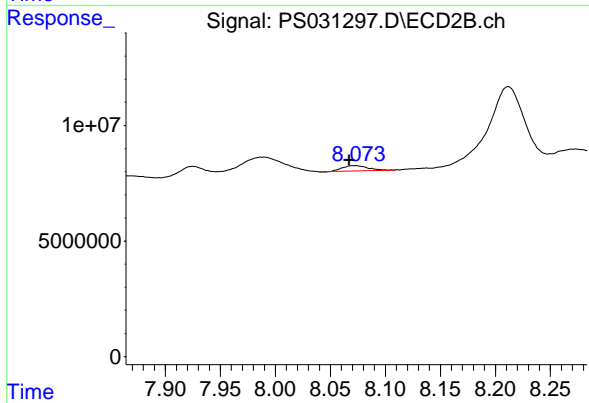
#5 DICAMBA

R.T.: 7.989 min
 Delta R.T.: 0.024 min
 Response: 6039144
 Conc: 1.11 ng/ml



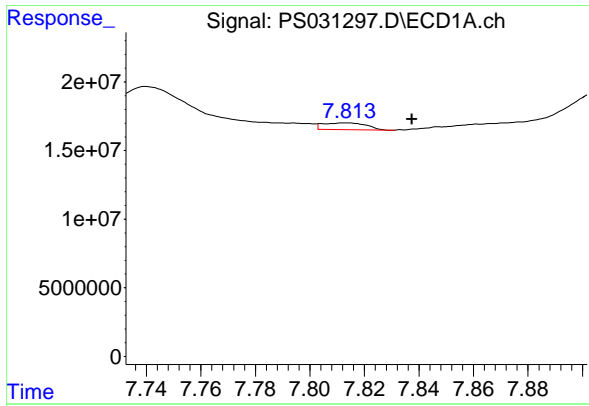
#6 MCPP

R.T.: 0.000 min
 Exp R.T.: 7.687 min
 Response: 0
 Conc: N.D.



#6 MCPP

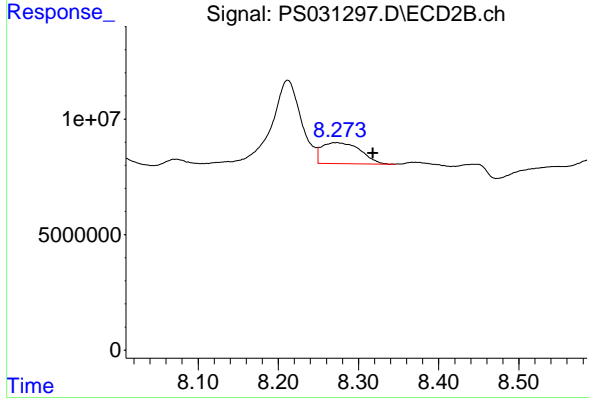
R.T.: 8.072 min
 Delta R.T.: 0.005 min
 Response: 3426092
 Conc: 2.00 ug/ml



#7 MCPA

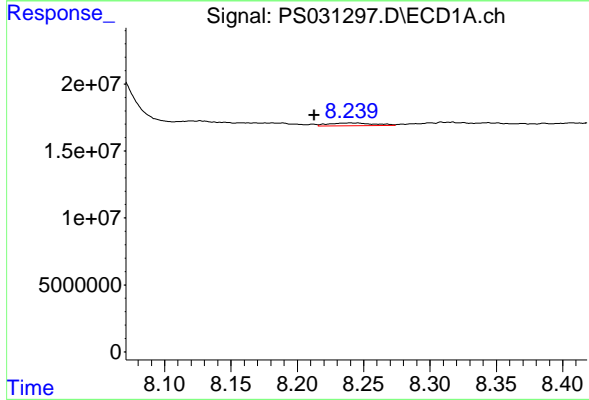
R.T.: 7.813 min
 Delta R.T.: -0.024 min
 Response: 5398564
 Conc: N.D.

Instrument :
 ECD_S
 ClientSampleId :



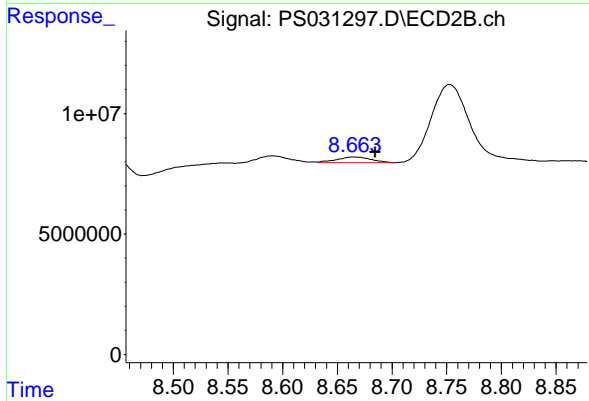
#7 MCPA

R.T.: 8.272 min
 Delta R.T.: -0.046 min
 Response: 30244623
 Conc: 11.66 ug/ml



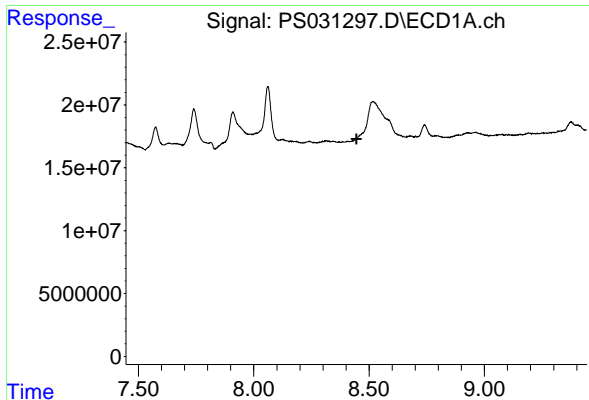
#8 DICHLORPROP

R.T.: 8.241 min
 Delta R.T.: 0.028 min
 Response: 5194781
 Conc: 1.71 ng/ml



#8 DICHLORPROP

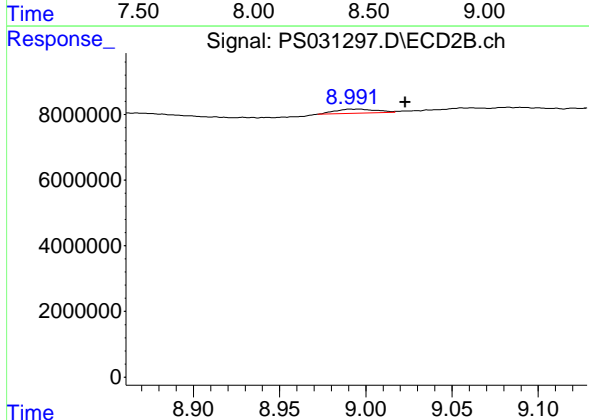
R.T.: 8.666 min
 Delta R.T.: -0.019 min
 Response: 5166110
 Conc: 3.97 ng/ml



#9 2,4-D

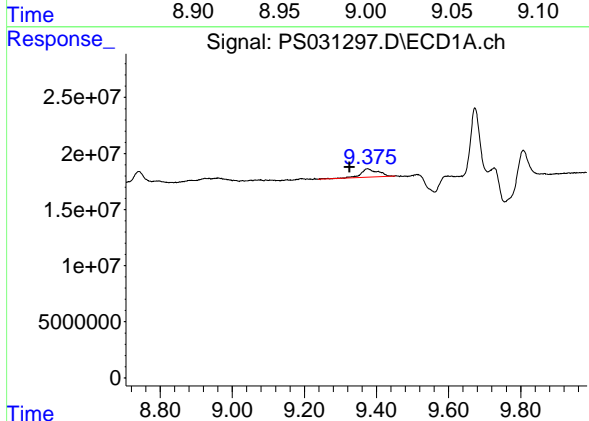
R.T.: 0.000 min
 Exp R.T.: 8.445 min
 Response: 0
 Conc: N.D.

Instrument :
 ECD_S
 ClientSampleId :



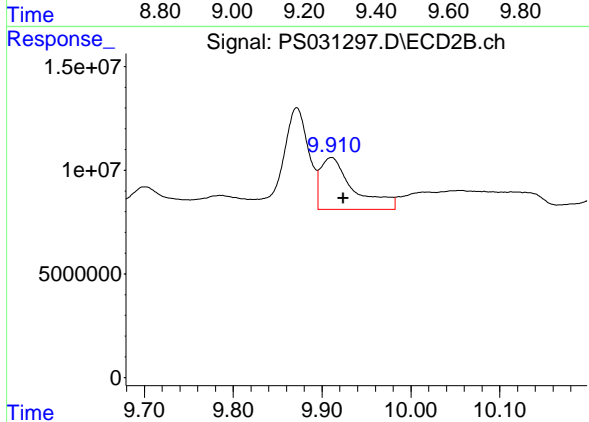
#9 2,4-D

R.T.: 8.994 min
 Delta R.T.: -0.029 min
 Response: 2054465
 Conc: 1.47 ng/ml



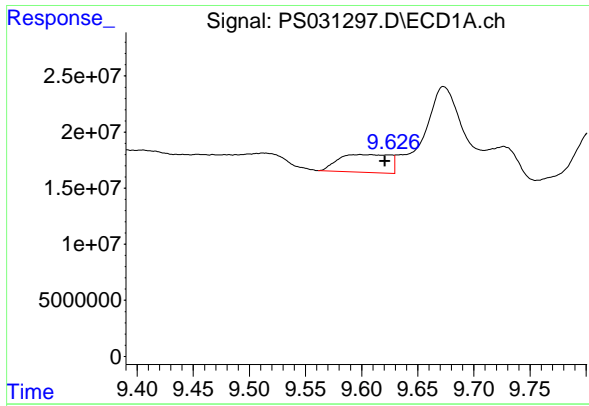
#11 2,4,5-TP (SILVEX)

R.T.: 9.375 min
 Delta R.T.: 0.049 min
 Response: 24498694
 Conc: 1.47 ng/ml



#11 2,4,5-TP (SILVEX)

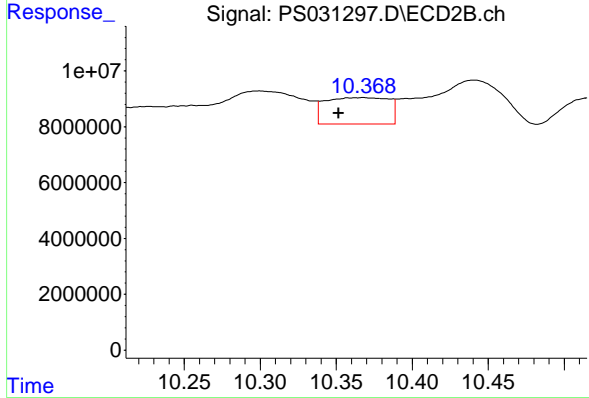
R.T.: 9.910 min
 Delta R.T.: -0.014 min
 Response: 64240698
 Conc: 5.06 ng/ml



#12 2,4,5-T

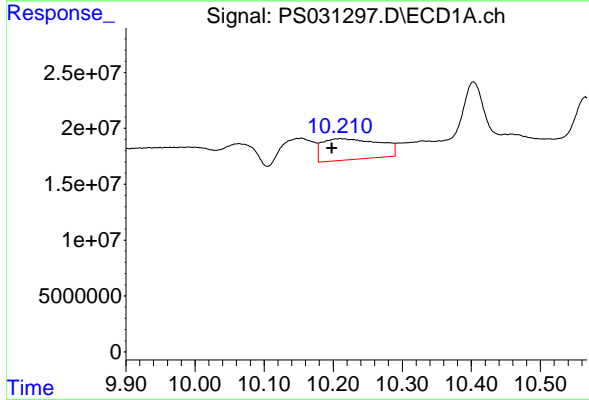
R.T.: 9.598 min
 Delta R.T.: -0.022 min
 Response: 51084189
 Conc: 3.84 ng/ml

Instrument :
 ECD_S
 ClientSampleId :



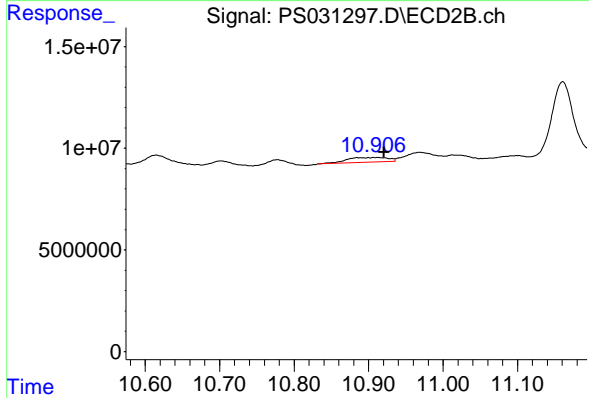
#12 2,4,5-T

R.T.: 10.367 min
 Delta R.T.: 0.015 min
 Response: 27423895
 Conc: 2.35 ng/ml



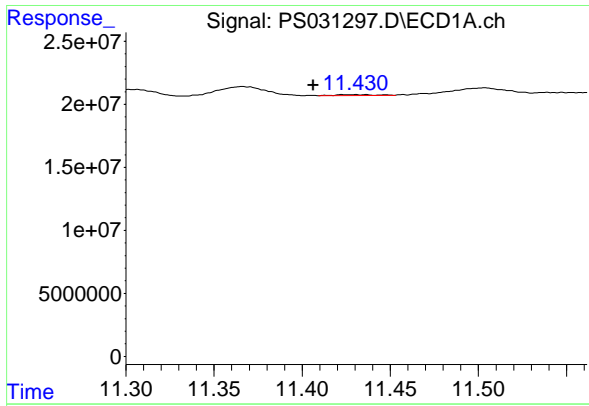
#13 2,4-DB

R.T.: 10.211 min
 Delta R.T.: 0.013 min
 Response: 108786556
 Conc: 62.26 ng/ml



#13 2,4-DB

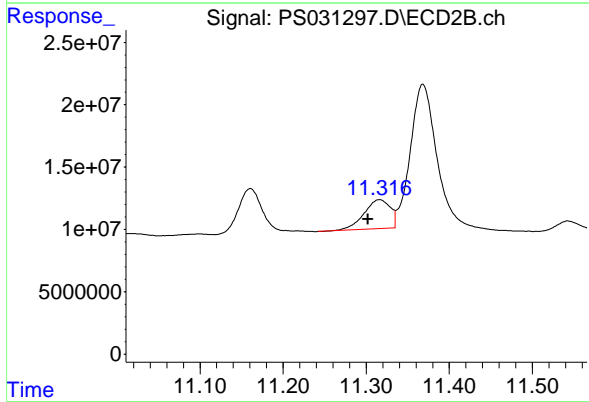
R.T.: 10.910 min
 Delta R.T.: -0.011 min
 Response: 9324363
 Conc: 9.65 ng/ml



#14 DINOSEB

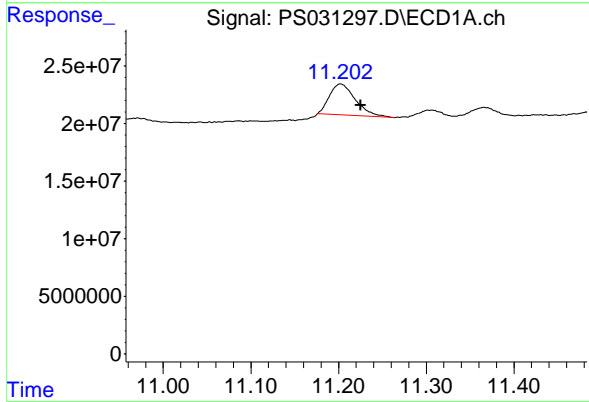
R.T.: 11.432 min
 Delta R.T.: 0.026 min
 Response: 1132824
 Conc: N.D.

Instrument :
 ECD_S
 ClientSampleId :



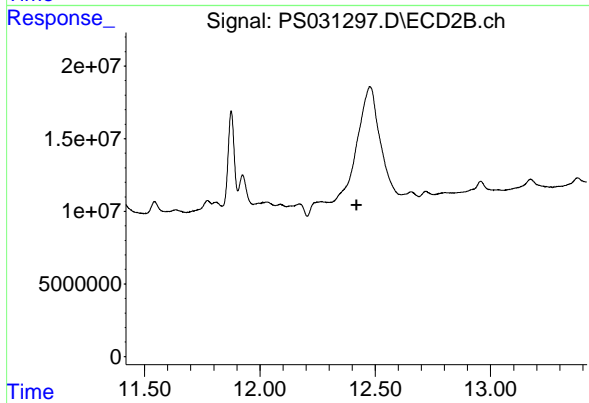
#14 DINOSEB

R.T.: 11.316 min
 Delta R.T.: 0.014 min
 Response: 51171391
 Conc: 5.48 ng/ml



#15 Picloram

R.T.: 11.202 min
 Delta R.T.: -0.023 min
 Response: 55112753
 Conc: 4.71 ng/ml



#15 Picloram

R.T.: 0.000 min
 Exp R.T. : 12.419 min
 Response: 0
 Conc: N.D.