

Data Path : Z:\pestpcbsrv\HPCHEM1\ECD\_S\Data\PS073020\  
 Data File : PS011511.D  
 Signal(s) : Signal #1: ECD1A.ch Signal #2: ECD2B.ch  
 Acq On : 30 Jul 2020 15:05  
 Operator : DD\AJ  
 Sample : L3449-03  
 Misc :  
 ALS Vial : 14 Sample Multiplier: 1

Instrument :  
 ECD\_S  
 ClientSampleId :

Integration File signal 1: autoint1.e  
 Integration File signal 2: autoint2.e  
 Quant Time: Jul 30 17:14:20 2020  
 Quant Method : Z:\pestpcbsrv\HPCHEM1\ECD\_S\Method\PS071320.M  
 Quant Title : 8080.M  
 QLast Update : Mon Jul 13 16:10:29 2020  
 Response via : Initial Calibration  
 Integrator: ChemStation

Volume Inj. : 2 µl  
 Signal #1 Phase : Rtx-CLPesticides Signal #2 Phase: Rtx-CLPesticides2  
 Signal #1 Info : 30M x 0.32mm x0.5 Signal #2 Info : 30M x 0.32mm x 0.25µm

	Compound	RT#1	RT#2	Resp#1	Resp#2	ng/ml	ng/ml
-----							
System Monitoring Compounds							
4) S	2,4-DCAA	7.225	6.917	261.1E6	155.9E6	269.101	276.943
Target Compounds							
1) T	Dalapon	2.990	2.583	36873226	88217516	30.642	114.916 #
2) T	3,5-DICHL...	0.000	6.098	0	74987496	N.D.	89.287
3) T	4-Nitroph...	7.062	6.527	10565956	1922808	23.968	5.864 #
5) T	DICAMBA	7.408	7.091	16058590	3655274	4.143	1.596 #
6) T	MCP P	7.637	7.249	25778144	7672951	8.513	4.021 #
7) T	MCPA	7.773	7.380	31861707	55547607	7.471	19.272 #
8) T	DICHLORPROP	0.000	7.734	0	6451021	N.D.	10.717
9) T	2,4-D	0.000	7.983	0	8148579	N.D.	10.870
10) T	Pentachlo...	8.648	8.434	25025315	25254201	1.893	3.623 #
11) T	2,4,5-TP ...	9.197	8.766	7262985	17985243	1.371	5.883 #
12) T	2,4,5-T	9.499	9.170	24176833	21036942	4.791	6.936 #
13) T	2,4-DB	10.042	9.680	6544183	17750378	10.153	41.522 #
14) T	DINOSEB	11.193	10.032	38562850	45952679	10.004	21.424 #
15) T	Picloram	11.020	11.000	224.8E6	171.9E6	35.629	39.296
16) T	DCPA	11.471	10.943	17678555	17167250	2.744	4.539 #

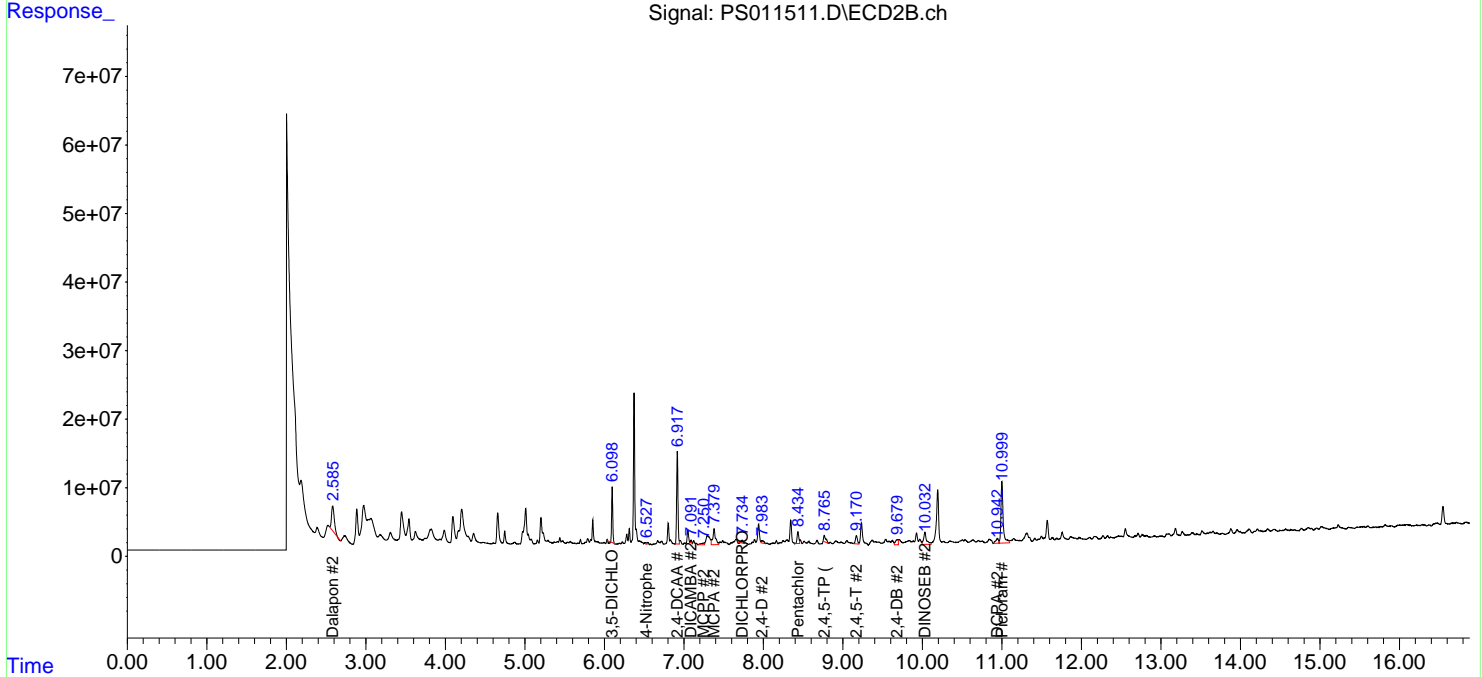
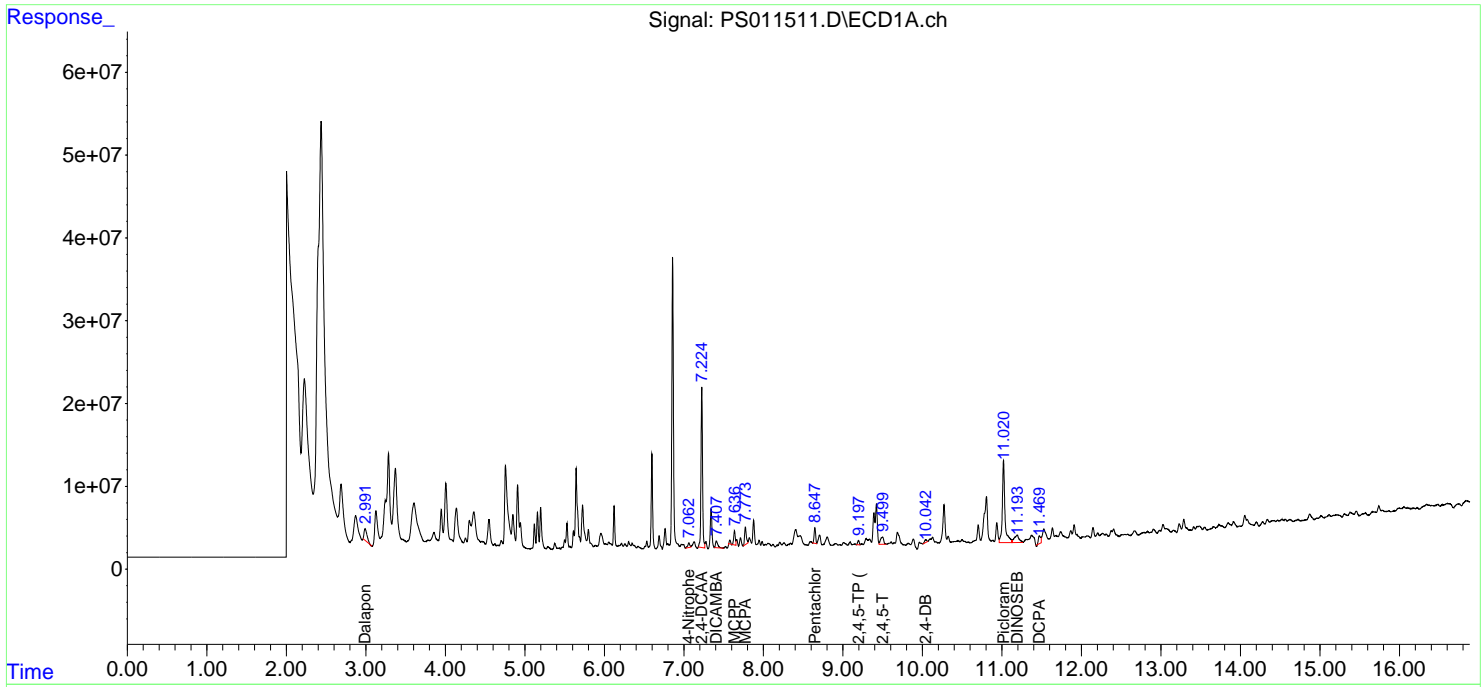
(f)=RT Delta > 1/2 Window (#)=Amounts differ by > 25% (m)=manual int.

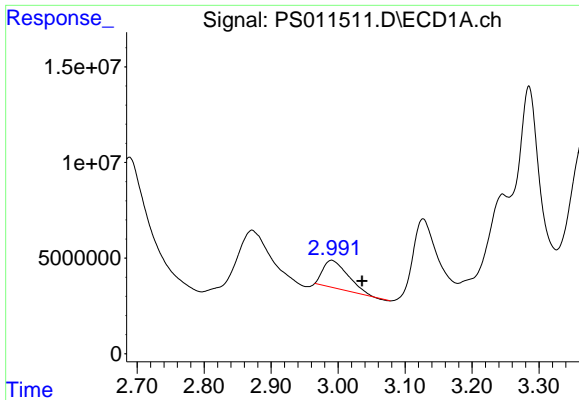
Data Path : Z:\pestpcbsrv\HPCHEM1\ECD\_S\Data\PS073020\  
 Data File : PS011511.D  
 Signal(s) : Signal #1: ECD1A.ch Signal #2: ECD2B.ch  
 Acq On : 30 Jul 2020 15:05  
 Operator : DD\AJ  
 Sample : L3449-03  
 Misc :  
 ALS Vial : 14 Sample Multiplier: 1

Instrument :  
 ECD\_S  
 ClientSampled :

Integration File signal 1: autoint1.e  
 Integration File signal 2: autoint2.e  
 Quant Time: Jul 30 17:14:20 2020  
 Quant Method : Z:\pestpcbsrv\HPCHEM1\ECD\_S\Method\PS071320.M  
 Quant Title : 8080.M  
 QLast Update : Mon Jul 13 16:10:29 2020  
 Response via : Initial Calibration  
 Integrator: ChemStation

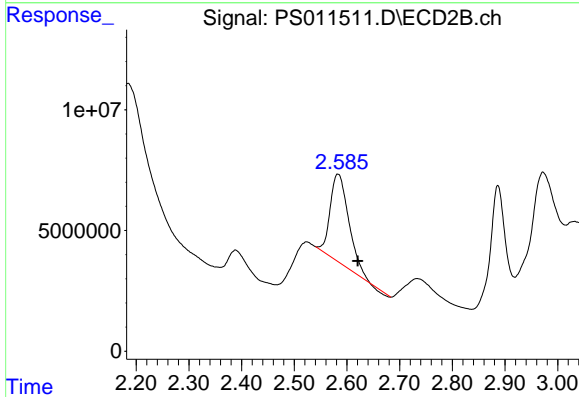
Volume Inj. : 2 µl  
 Signal #1 Phase : Rtx-CLPesticides Signal #2 Phase: Rtx-CLPesticides2  
 Signal #1 Info : 30M x 0.32mm x0.5 Signal #2 Info : 30M x 0.32mm x 0.25µm



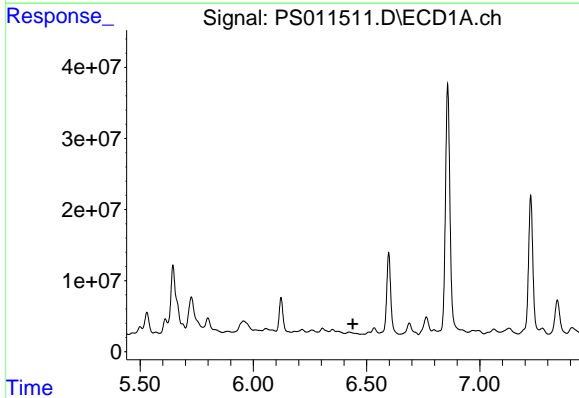


#1 Dalapon  
 R.T.: 2.990 min  
 Delta R.T.: -0.046 min  
 Response: 36873226  
 Conc: 30.64 ng/ml

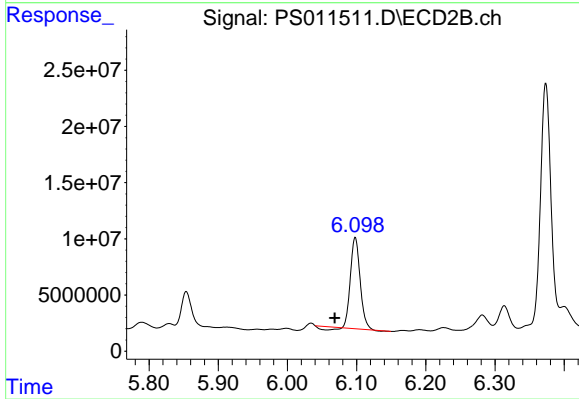
Instrument :  
 ECD\_S  
 ClientSampleId :



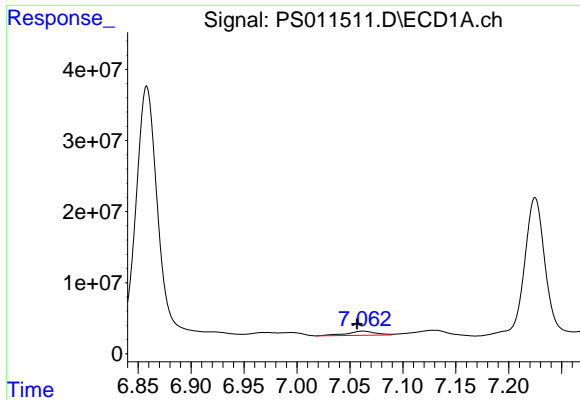
#1 Dalapon  
 R.T.: 2.583 min  
 Delta R.T.: -0.038 min  
 Response: 88217516  
 Conc: 114.92 ng/ml



#2 3,5-DICHLOROBENZOIC ACID  
 R.T.: 0.000 min  
 Exp R.T. : 6.439 min  
 Response: 0  
 Conc: N.D.

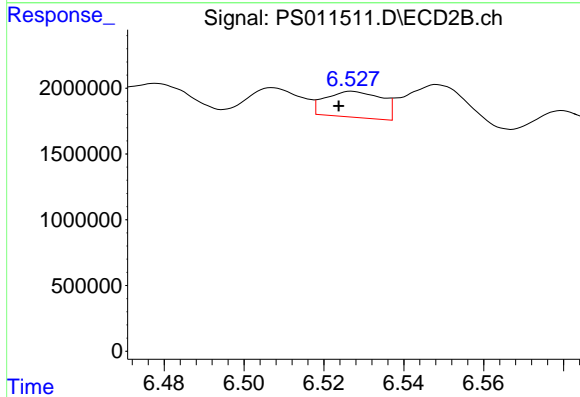


#2 3,5-DICHLOROBENZOIC ACID  
 R.T.: 6.098 min  
 Delta R.T.: 0.029 min  
 Response: 74987496  
 Conc: 89.29 ng/ml

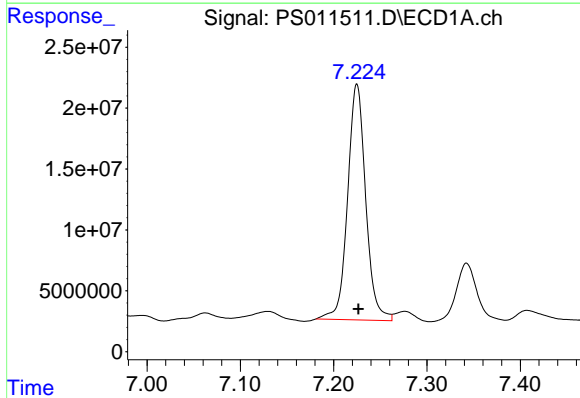


#3 4-Nitrophenol  
 R.T.: 7.062 min  
 Delta R.T.: 0.006 min  
 Response: 10565956  
 Conc: 23.97 ng/ml

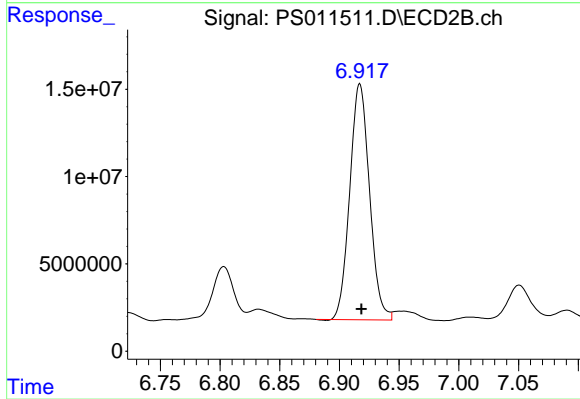
Instrument :  
 ECD\_S  
 ClientSampleId :



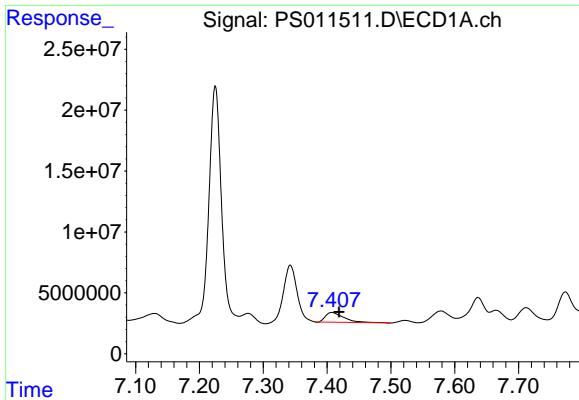
#3 4-Nitrophenol  
 R.T.: 6.527 min  
 Delta R.T.: 0.003 min  
 Response: 1922808  
 Conc: 5.86 ng/ml



#4 2,4-DCAA  
 R.T.: 7.225 min  
 Delta R.T.: -0.002 min  
 Response: 261119329  
 Conc: 269.10 ng/ml

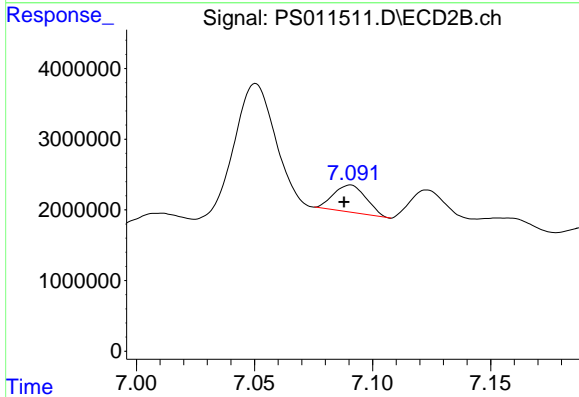


#4 2,4-DCAA  
 R.T.: 6.917 min  
 Delta R.T.: -0.001 min  
 Response: 155925340  
 Conc: 276.94 ng/ml

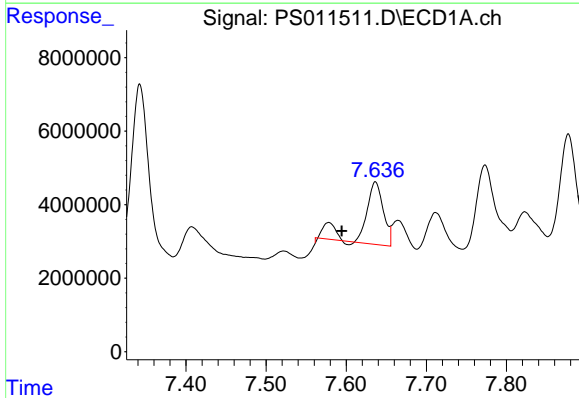


#5 DICAMBA  
 R.T.: 7.408 min  
 Delta R.T.: -0.011 min  
 Response: 16058590  
 Conc: 4.14 ng/ml

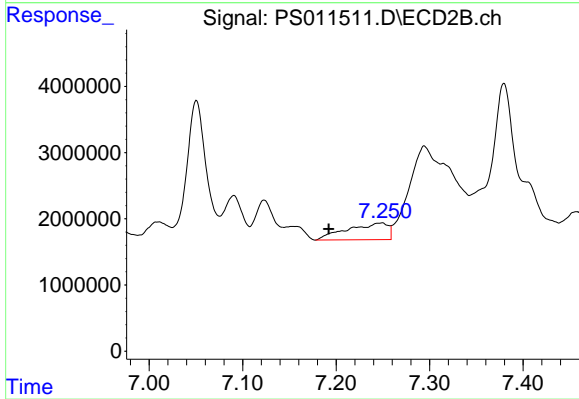
Instrument :  
 ECD\_S  
 ClientSampleId :



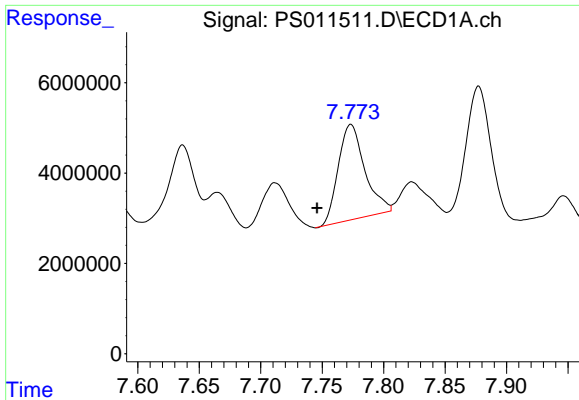
#5 DICAMBA  
 R.T.: 7.091 min  
 Delta R.T.: 0.003 min  
 Response: 3655274  
 Conc: 1.60 ng/ml



#6 MCPP  
 R.T.: 7.637 min  
 Delta R.T.: 0.042 min  
 Response: 25778144  
 Conc: 8.51 ug/ml

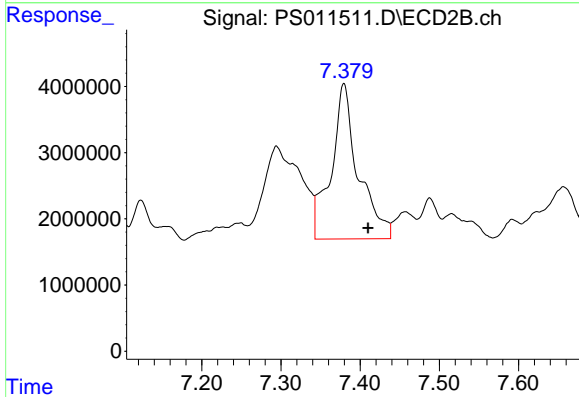


#6 MCPP  
 R.T.: 7.249 min  
 Delta R.T.: 0.057 min  
 Response: 7672951  
 Conc: 4.02 ug/ml

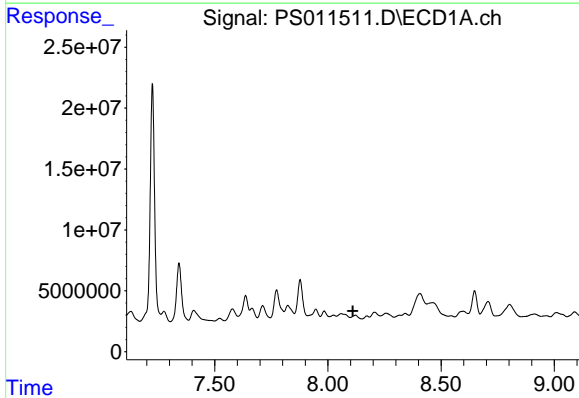


#7 MCPA  
 R.T.: 7.773 min  
 Delta R.T.: 0.028 min  
 Response: 31861707  
 Conc: 7.47 ug/ml

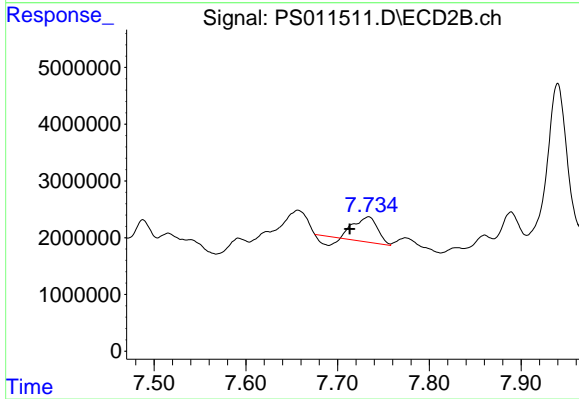
Instrument :  
 ECD\_S  
 ClientSampled :



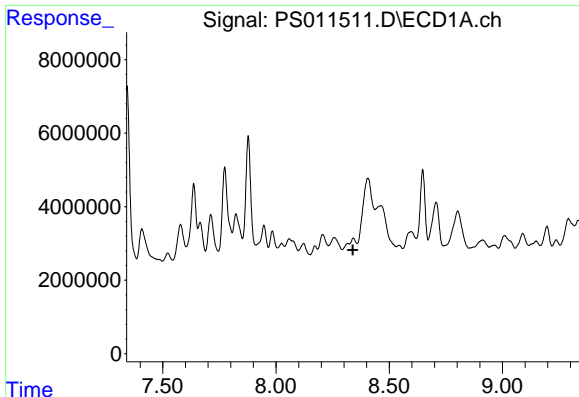
#7 MCPA  
 R.T.: 7.380 min  
 Delta R.T.: -0.030 min  
 Response: 55547607  
 Conc: 19.27 ug/ml



#8 DICHLORPROP  
 R.T.: 0.000 min  
 Exp R.T. : 8.110 min  
 Response: 0  
 Conc: N.D.



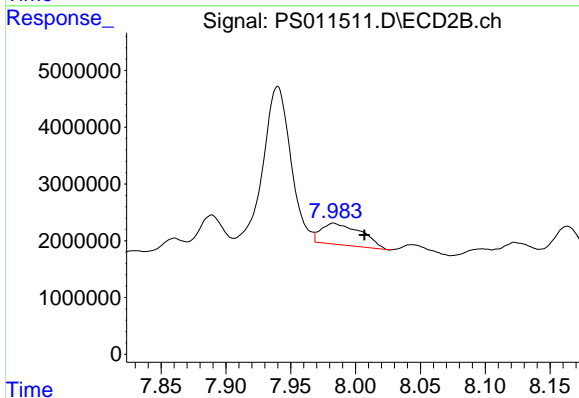
#8 DICHLORPROP  
 R.T.: 7.734 min  
 Delta R.T.: 0.021 min  
 Response: 6451021  
 Conc: 10.72 ng/ml



#9 2,4-D

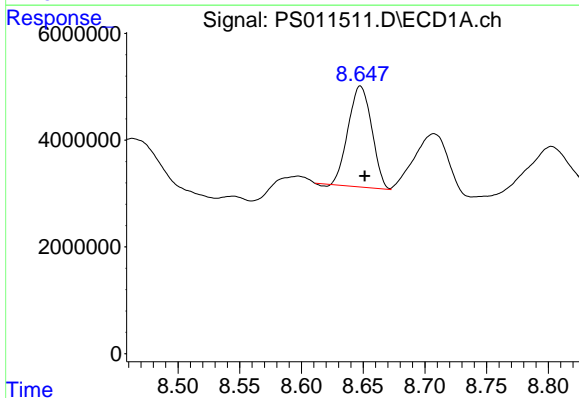
R.T.: 0.000 min  
 Exp R.T.: 8.339 min  
 Response: 0  
 Conc: N.D.

Instrument :  
 ECD\_S  
 ClientSampleId :



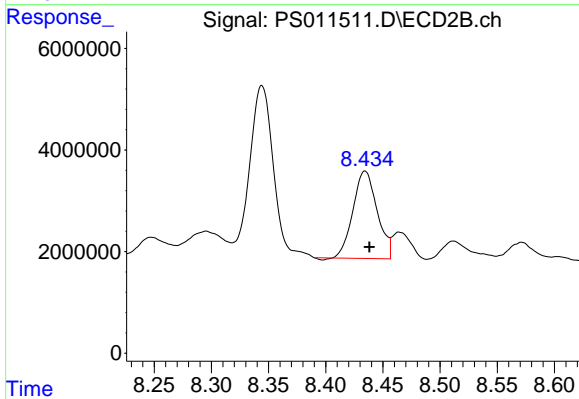
#9 2,4-D

R.T.: 7.983 min  
 Delta R.T.: -0.024 min  
 Response: 8148579  
 Conc: 10.87 ng/ml



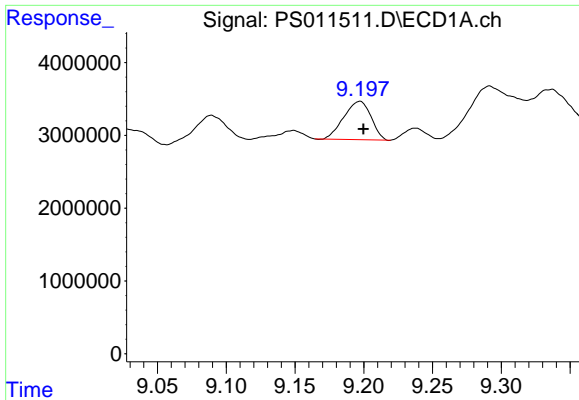
#10 Pentachlorophenol

R.T.: 8.648 min  
 Delta R.T.: -0.003 min  
 Response: 25025315  
 Conc: 1.89 ng/ml



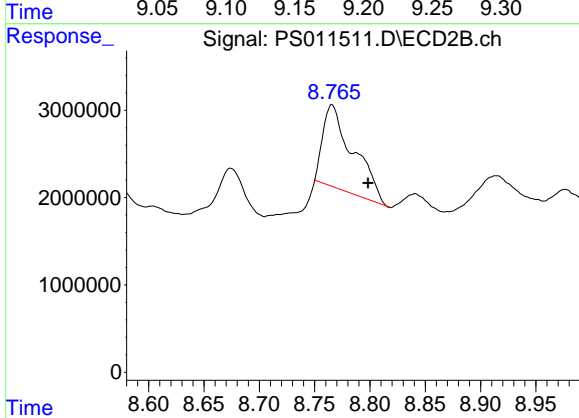
#10 Pentachlorophenol

R.T.: 8.434 min  
 Delta R.T.: -0.004 min  
 Response: 25254201  
 Conc: 3.62 ng/ml

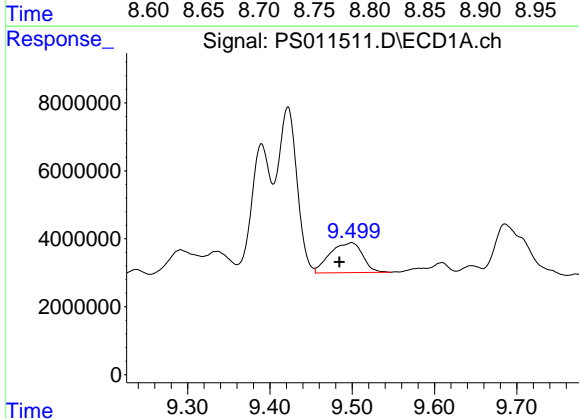


#11 2,4,5-TP (SILVEX)  
 R.T.: 9.197 min  
 Delta R.T.: -0.003 min  
 Response: 7262985  
 Conc: 1.37 ng/ml

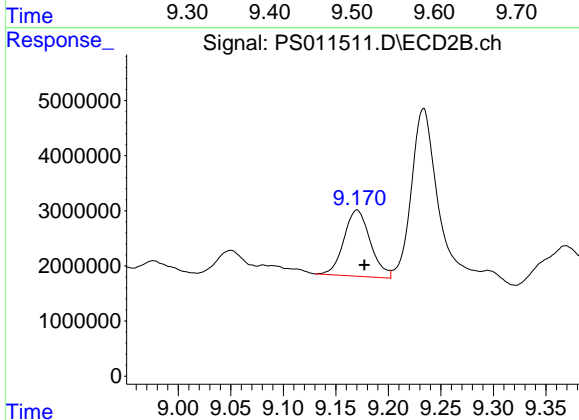
Instrument :  
 ECD\_S  
 ClientSampleId :



#11 2,4,5-TP (SILVEX)  
 R.T.: 8.766 min  
 Delta R.T.: -0.032 min  
 Response: 17985243  
 Conc: 5.88 ng/ml

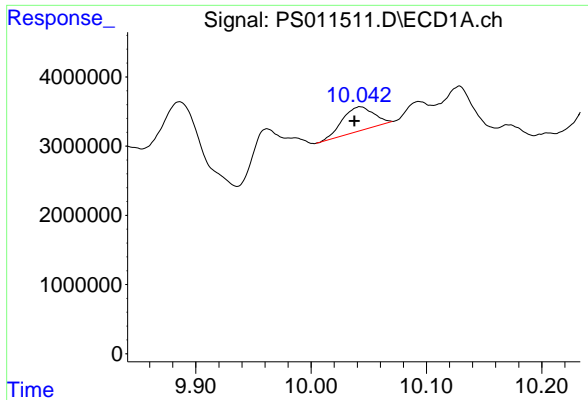


#12 2,4,5-T  
 R.T.: 9.499 min  
 Delta R.T.: 0.014 min  
 Response: 24176833  
 Conc: 4.79 ng/ml



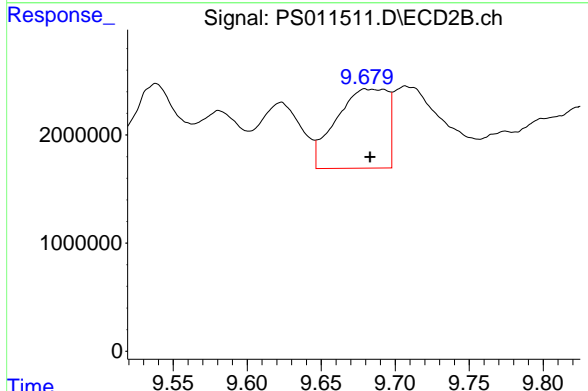
#12 2,4,5-T  
 R.T.: 9.170 min  
 Delta R.T.: -0.007 min  
 Response: 21036942  
 Conc: 6.94 ng/ml



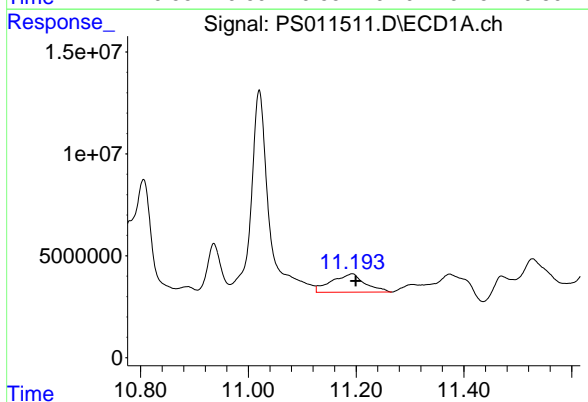


#13 2,4-DB  
 R.T.: 10.042 min  
 Delta R.T.: 0.005 min  
 Response: 6544183  
 Conc: 10.15 ng/ml

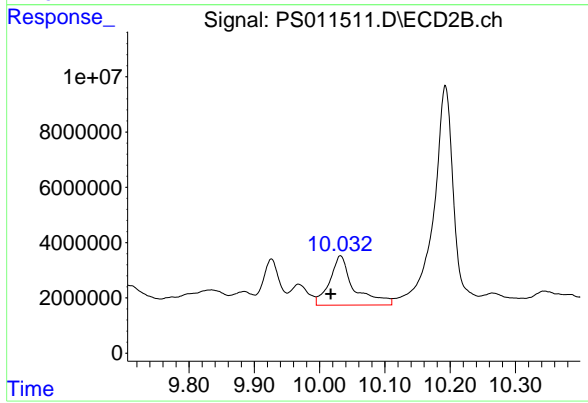
Instrument :  
 ECD\_S  
 ClientSampleId :



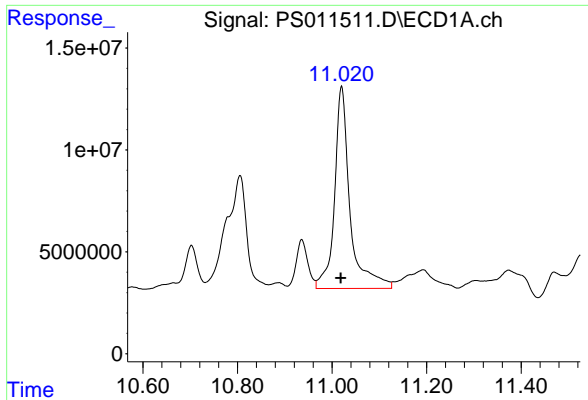
#13 2,4-DB  
 R.T.: 9.680 min  
 Delta R.T.: -0.003 min  
 Response: 17750378  
 Conc: 41.52 ng/ml



#14 DINOSEB  
 R.T.: 11.193 min  
 Delta R.T.: -0.006 min  
 Response: 38562850  
 Conc: 10.00 ng/ml

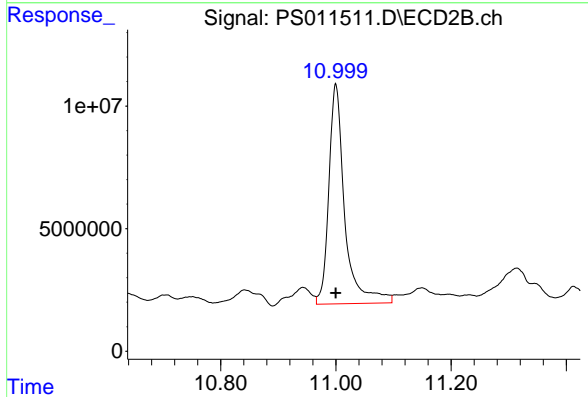


#14 DINOSEB  
 R.T.: 10.032 min  
 Delta R.T.: 0.015 min  
 Response: 45952679  
 Conc: 21.42 ng/ml

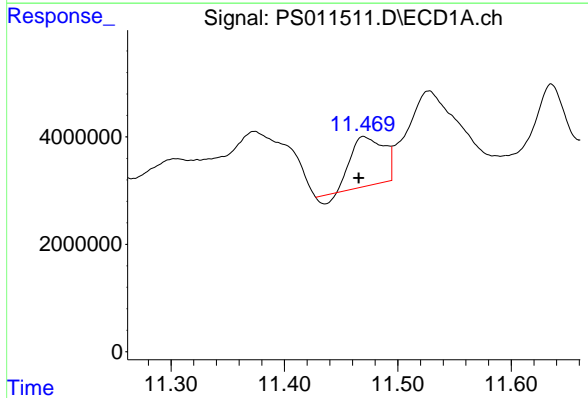


#15 Picloram  
R.T.: 11.020 min  
Delta R.T.: 0.002 min  
Response: 224816405  
Conc: 35.63 ng/ml

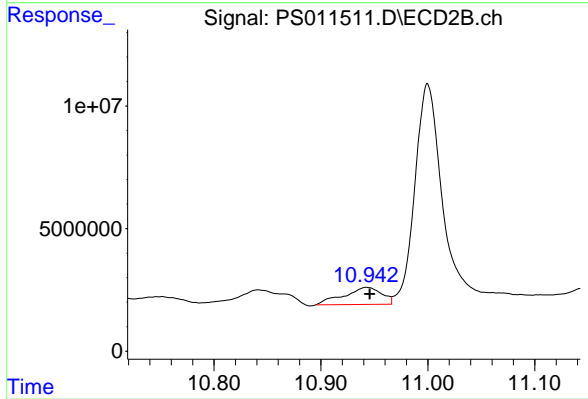
Instrument :  
ECD\_S  
ClientSampled :



#15 Picloram  
R.T.: 11.000 min  
Delta R.T.: 0.000 min  
Response: 171857156  
Conc: 39.30 ng/ml



#16 DCPA  
R.T.: 11.471 min  
Delta R.T.: 0.005 min  
Response: 17678555  
Conc: 2.74 ng/ml



#16 DCPA  
R.T.: 10.943 min  
Delta R.T.: -0.003 min  
Response: 17167250  
Conc: 4.54 ng/ml