

Data Path : Z:\pestpcbsrv\HPCHEM1\ECD_S\Data\PS073020\
 Data File : PS011529.D
 Signal(s) : Signal #1: ECD1A.ch Signal #2: ECD2B.ch
 Acq On : 30 Jul 2020 22:00
 Operator : DD\AJ
 Sample : L3435-05RE
 Misc :
 ALS Vial : 30 Sample Multiplier: 1

Instrument :
 ECD_S
 ClientSampleId :

Integration File signal 1: autoint1.e
 Integration File signal 2: autoint2.e
 Quant Time: Jul 31 02:18:45 2020
 Quant Method : Z:\pestpcbsrv\HPCHEM1\ECD_S\Method\PS071320.M
 Quant Title : 8080.M
 QLast Update : Mon Jul 13 16:10:29 2020
 Response via : Initial Calibration
 Integrator: ChemStation

Volume Inj. : 2 µl
 Signal #1 Phase : Rtx-CLPesticides Signal #2 Phase: Rtx-CLPesticides2
 Signal #1 Info : 30M x 0.32mm x0.5 Signal #2 Info : 30M x 0.32mm x 0.25µm

	Compound	RT#1	RT#2	Resp#1	Resp#2	ng/ml	ng/ml

System Monitoring Compounds							
4) S	2,4-DCAA	7.224	6.917	184.6E6	97761733	190.210	173.637
Target Compounds							
2) T	3,5-DICHL...	0.000	6.098	0	61813666	N.D.	73.601
3) T	4-Nitroph...	6.996	6.549	6337430	3974759	14.376	12.123
6) T	MCP	7.579	7.242	7201953	14089935	2.378	7.384 #
7) T	MCPA	7.773	7.405	32460796	21901242	7.611	7.598
8) T	DICHLORPROP	8.171	7.730	-2577064	13925510	N.D.	23.135
9) T	2,4-D	0.000	7.985	0	24094016	N.D.	32.140
10) T	Pentachlo...	8.698	8.419	17006108	4957655	1.287	<MDL #
11) T	2,4,5-TP ...	0.000	8.765	0	15723101	N.D.	5.143
12) T	2,4,5-T	9.521	9.172	46428467	47786695	9.201	15.755 #
13) T	2,4-DB	10.045	9.703	20908808	47772964	32.440	111.750 #
14) T	DINOSEB	0.000	10.064	0	65791629	N.D.	30.673
15) T	Picloram	10.990	11.015	7069133	12695800	1.120	2.903 #
16) T	DCPA	11.480	10.938	23049420	18611923	3.577	4.921 #

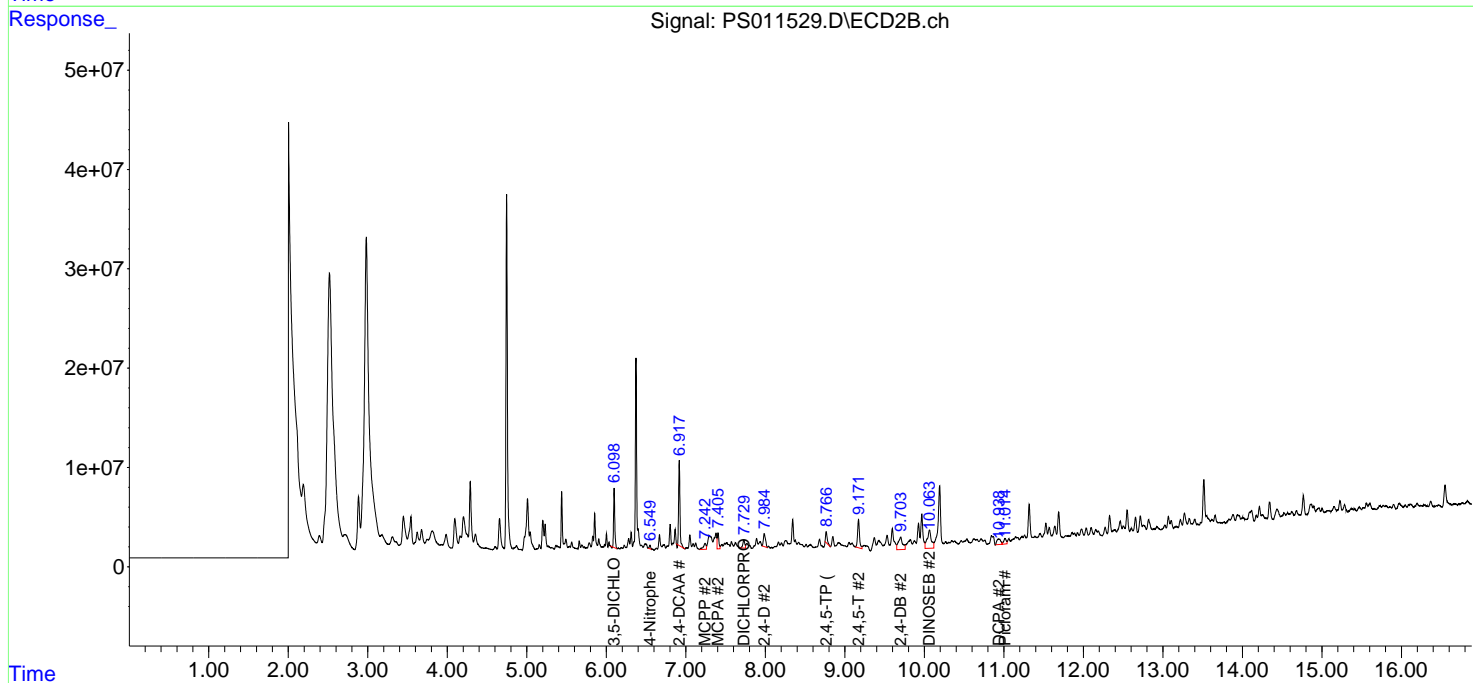
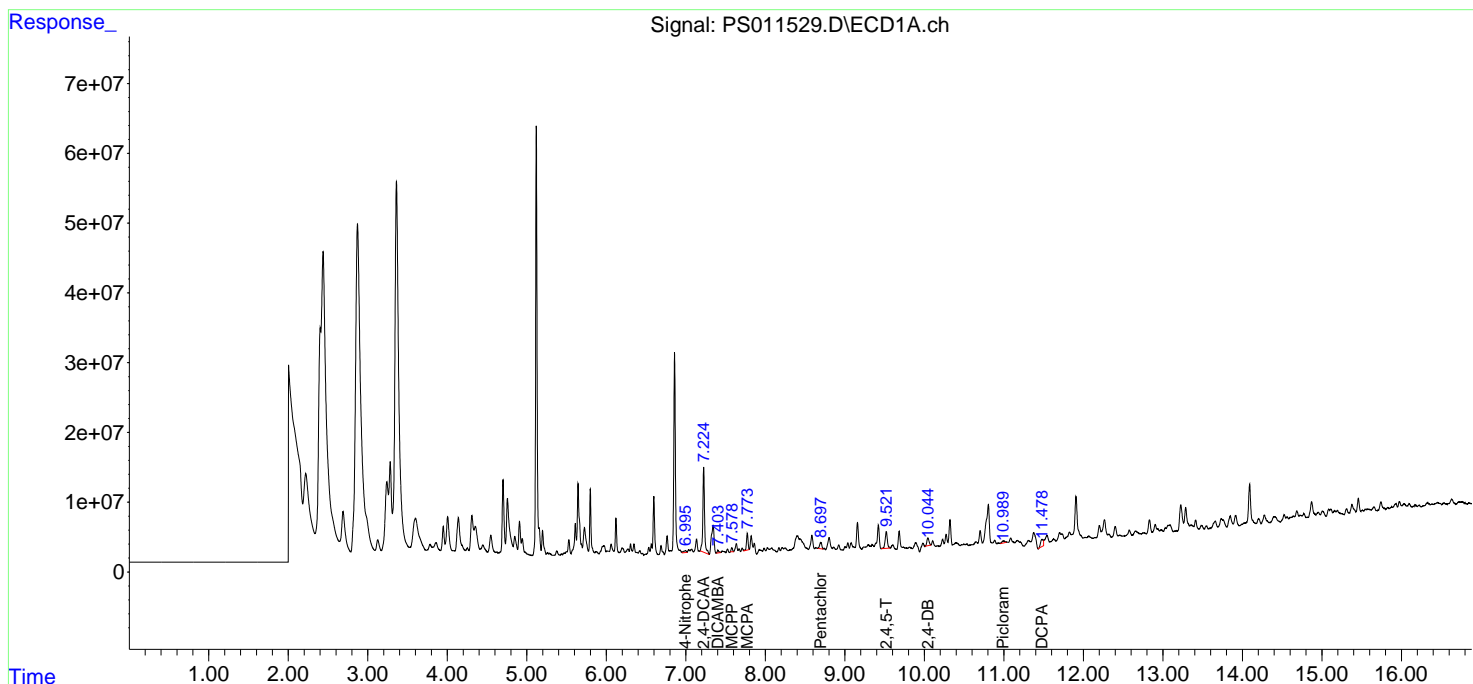
(f)=RT Delta > 1/2 Window (#)=Amounts differ by > 25% (m)=manual int.

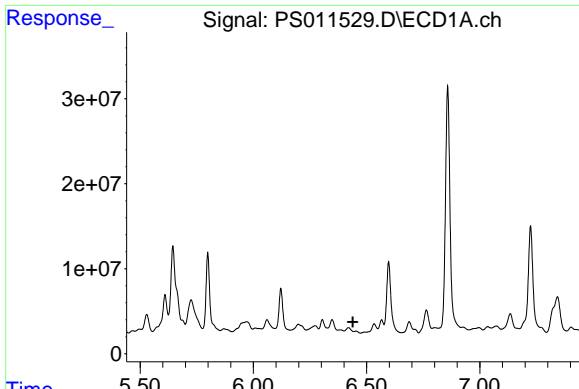
Data Path : Z:\pestpcbsrv\HPCHEM1\ECD_S\Data\PS073020\
 Data File : PS011529.D
 Signal(s) : Signal #1: ECD1A.ch Signal #2: ECD2B.ch
 Acq On : 30 Jul 2020 22:00
 Operator : DD\AJ
 Sample : L3435-05RE
 Misc :
 ALS Vial : 30 Sample Multiplier: 1

Instrument :
 ECD_S
 ClientSampled :

Integration File signal 1: autoint1.e
 Integration File signal 2: autoint2.e
 Quant Time: Jul 31 02:18:45 2020
 Quant Method : Z:\pestpcbsrv\HPCHEM1\ECD_S\Method\PS071320.M
 Quant Title : 8080.M
 QLast Update : Mon Jul 13 16:10:29 2020
 Response via : Initial Calibration
 Integrator: ChemStation

Volume Inj. : 2 µl
 Signal #1 Phase : Rtx-CLPesticides Signal #2 Phase: Rtx-CLPesticides2
 Signal #1 Info : 30M x 0.32mm x0.5 Signal #2 Info : 30M x 0.32mm x 0.25µm

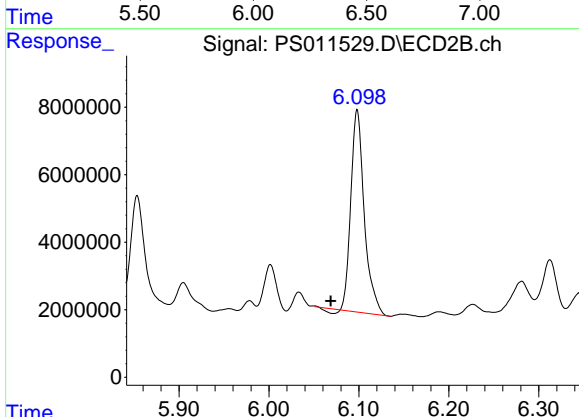




#2 3,5-DICHLORO BENZOIC ACID

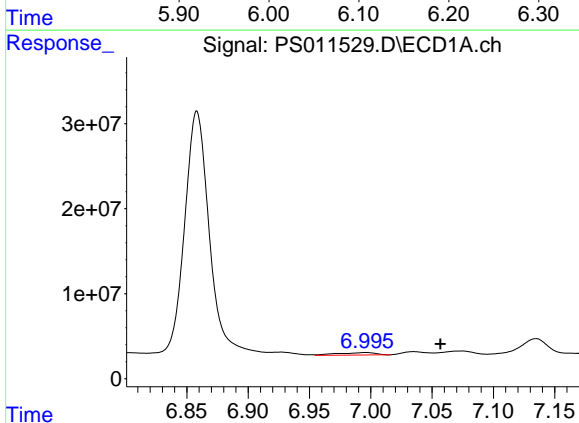
R.T.: 0.000 min
 Exp R.T.: 6.439 min
 Response: 0
 Conc: N.D.

Instrument :
 ECD_S
 ClientSampleId :



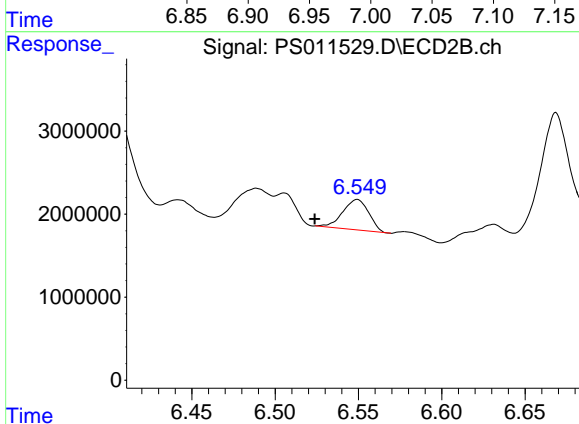
#2 3,5-DICHLORO BENZOIC ACID

R.T.: 6.098 min
 Delta R.T.: 0.030 min
 Response: 61813666
 Conc: 73.60 ng/ml



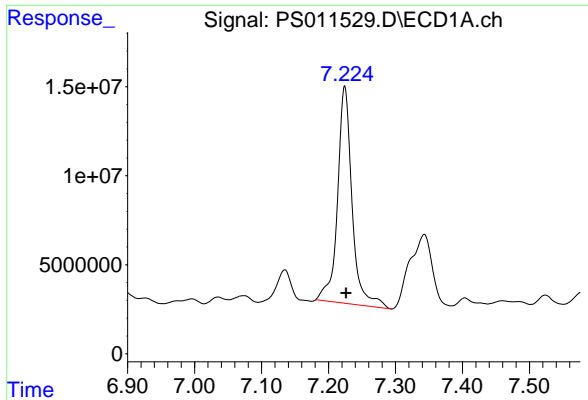
#3 4-Nitrophenol

R.T.: 6.996 min
 Delta R.T.: -0.061 min
 Response: 6337430
 Conc: 14.38 ng/ml



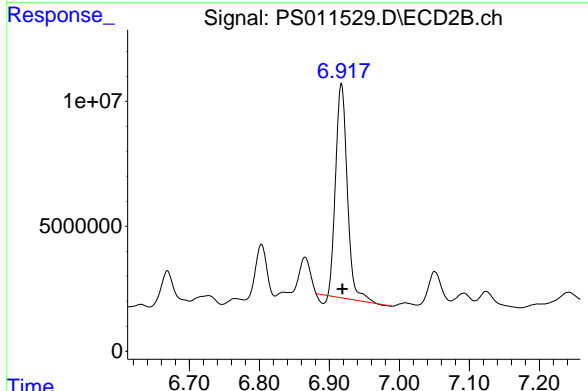
#3 4-Nitrophenol

R.T.: 6.549 min
 Delta R.T.: 0.026 min
 Response: 3974759
 Conc: 12.12 ng/ml

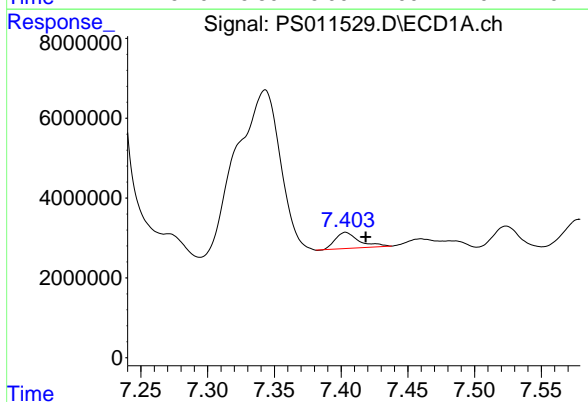


#4 2,4-DCAA
 R.T.: 7.224 min
 Delta R.T.: -0.002 min
 Response: 184567604
 Conc: 190.21 ng/ml

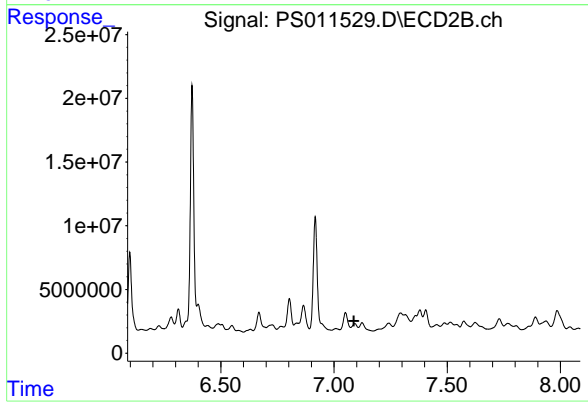
Instrument :
 ECD_S
 ClientSampleId :



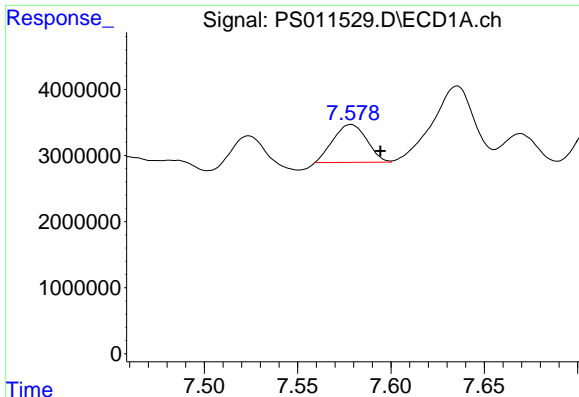
#4 2,4-DCAA
 R.T.: 6.917 min
 Delta R.T.: -0.001 min
 Response: 97761733
 Conc: 173.64 ng/ml



#5 DICAMBA
 R.T.: 7.404 min
 Delta R.T.: -0.015 min
 Response: 5025361
 Conc: 1.30 ng/ml



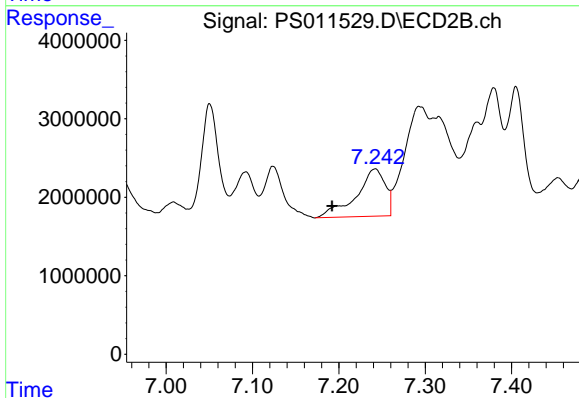
#5 DICAMBA
 R.T.: 7.092 min
 Delta R.T.: 0.004 min
 Response: -4205943
 Conc: N.D.



#6 MCPP

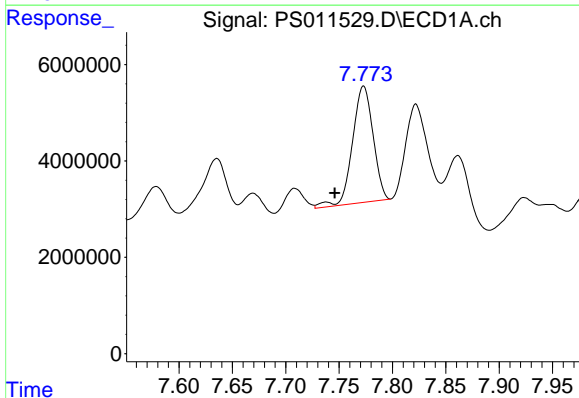
R.T.: 7.579 min
 Delta R.T.: -0.016 min
 Response: 7201953
 Conc: 2.38 ug/ml

Instrument :
 ECD_S
 ClientSampleId :



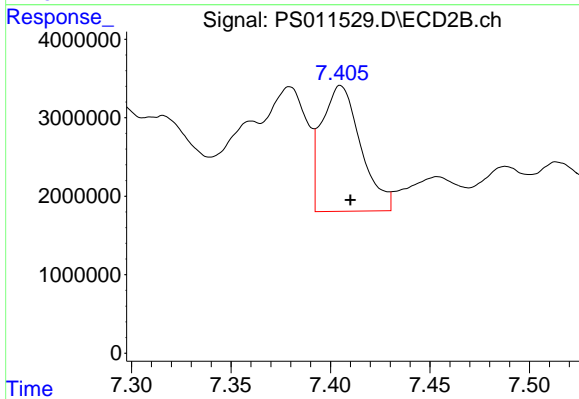
#6 MCPP

R.T.: 7.242 min
 Delta R.T.: 0.050 min
 Response: 14089935
 Conc: 7.38 ug/ml



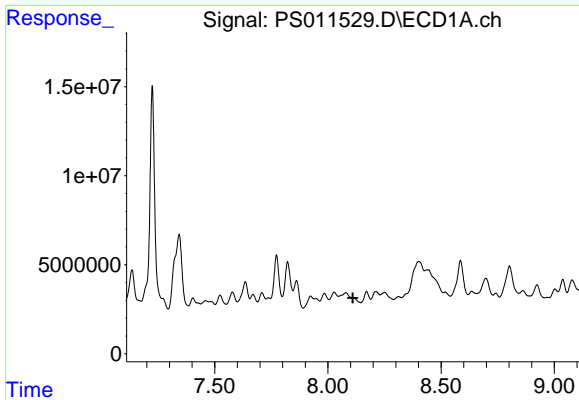
#7 MCPA

R.T.: 7.773 min
 Delta R.T.: 0.027 min
 Response: 32460796
 Conc: 7.61 ug/ml



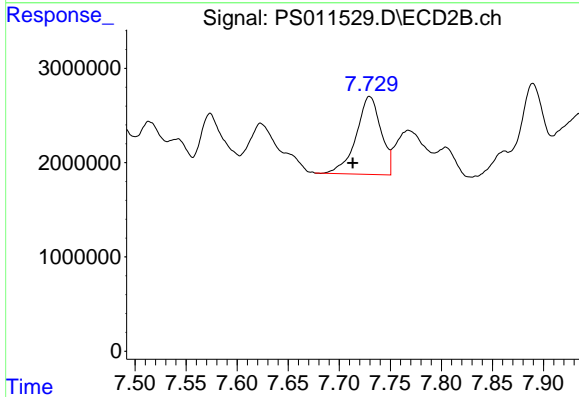
#7 MCPA

R.T.: 7.405 min
 Delta R.T.: -0.005 min
 Response: 21901242
 Conc: 7.60 ug/ml

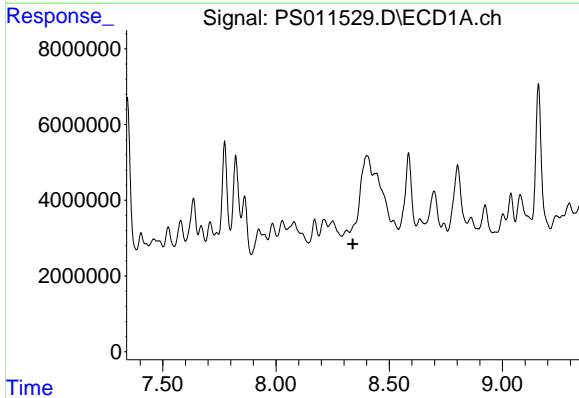


#8 DICHLORPROP
 R.T.: 8.171 min
 Delta R.T.: 0.061 min
 Response: -2577064
 Conc: N.D.

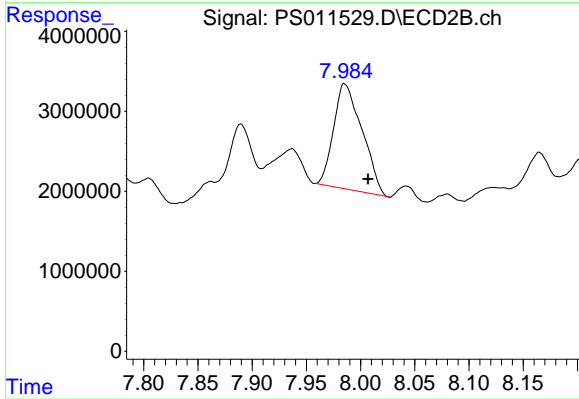
Instrument :
 ECD_S
 ClientSampleId :



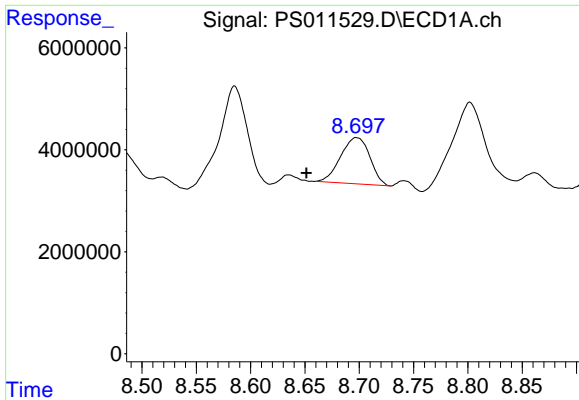
#8 DICHLORPROP
 R.T.: 7.730 min
 Delta R.T.: 0.016 min
 Response: 13925510
 Conc: 23.13 ng/ml



#9 2,4-D
 R.T.: 0.000 min
 Exp R.T. : 8.339 min
 Response: 0
 Conc: N.D.

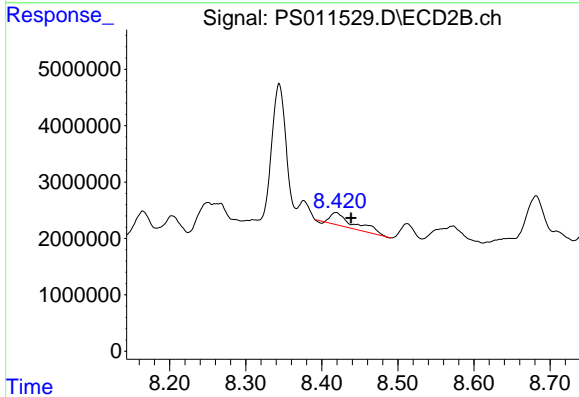


#9 2,4-D
 R.T.: 7.985 min
 Delta R.T.: -0.022 min
 Response: 24094016
 Conc: 32.14 ng/ml

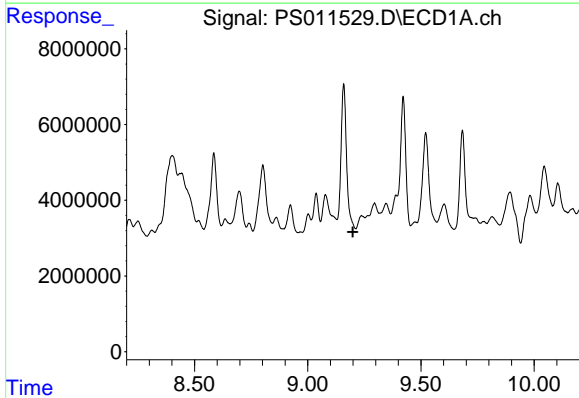


#10 Pentachlorophenol
 R.T.: 8.698 min
 Delta R.T.: 0.046 min
 Response: 17006108
 Conc: 1.29 ng/ml

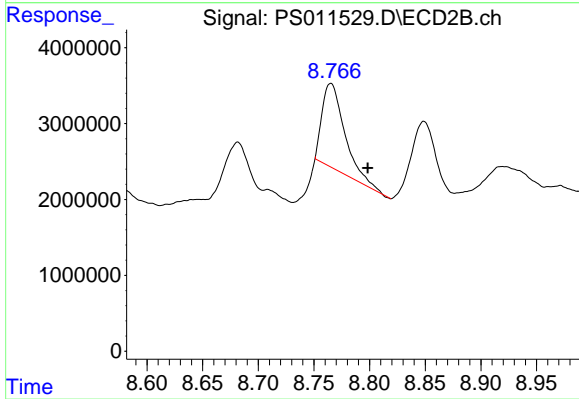
Instrument :
 ECD_S
 ClientSampled :



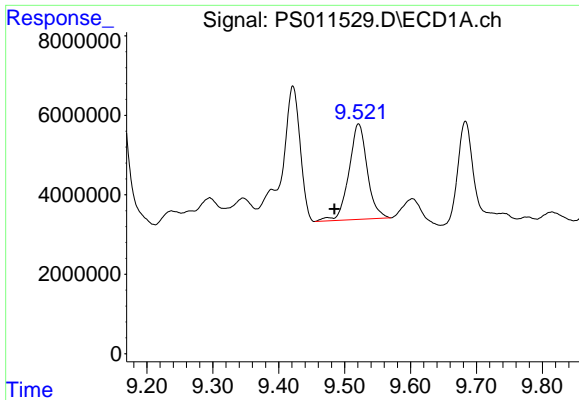
#10 Pentachlorophenol
 R.T.: 8.419 min
 Delta R.T.: -0.020 min
 Response: 4957655
 Conc: N.D.



#11 2,4,5-TP (SILVEX)
 R.T.: 0.000 min
 Exp R.T. : 9.200 min
 Response: 0
 Conc: N.D.



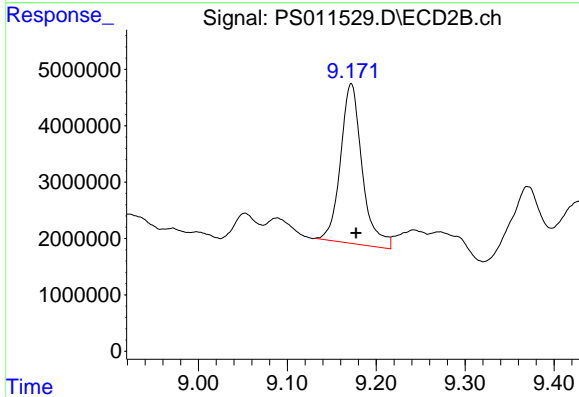
#11 2,4,5-TP (SILVEX)
 R.T.: 8.765 min
 Delta R.T.: -0.033 min
 Response: 15723101
 Conc: 5.14 ng/ml



#12 2,4,5-T

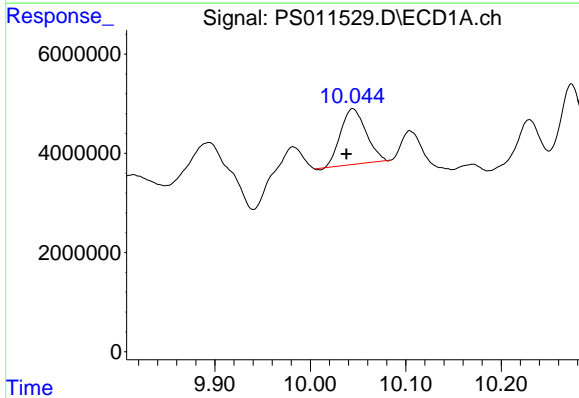
R.T.: 9.521 min
 Delta R.T.: 0.037 min
 Response: 46428467
 Conc: 9.20 ng/ml

Instrument :
 ECD_S
 ClientSampled :



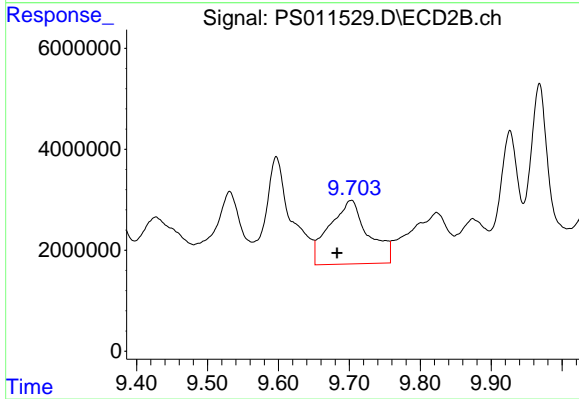
#12 2,4,5-T

R.T.: 9.172 min
 Delta R.T.: -0.005 min
 Response: 47786695
 Conc: 15.76 ng/ml



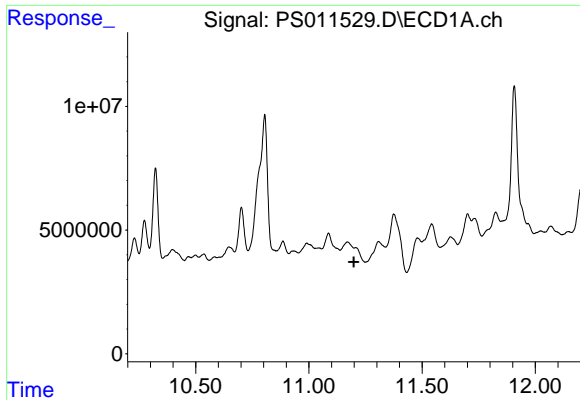
#13 2,4-DB

R.T.: 10.045 min
 Delta R.T.: 0.007 min
 Response: 20908808
 Conc: 32.44 ng/ml



#13 2,4-DB

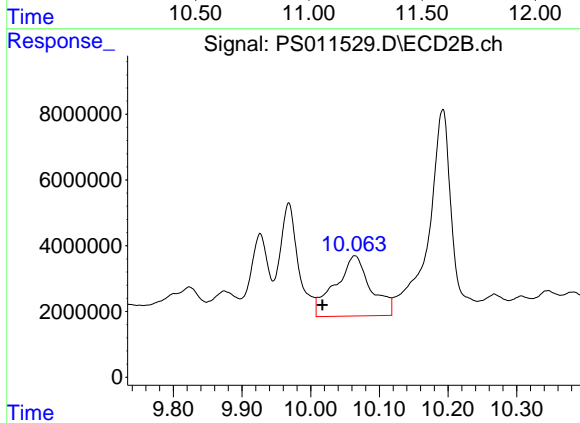
R.T.: 9.703 min
 Delta R.T.: 0.020 min
 Response: 47772964
 Conc: 111.75 ng/ml



#14 DINOSEB

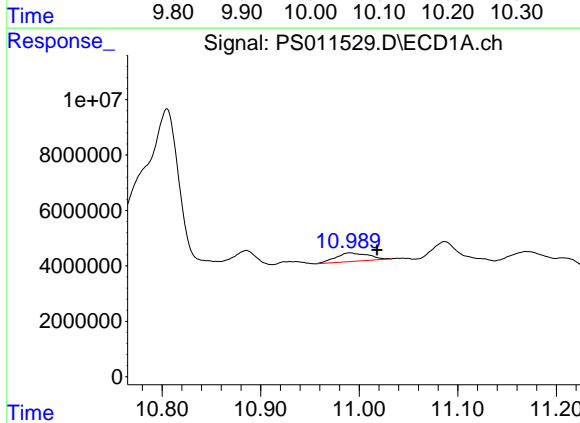
R.T.: 0.000 min
 Exp R.T.: 11.199 min
 Response: 0
 Conc: N.D.

Instrument :
 ECD_S
 ClientSampled :



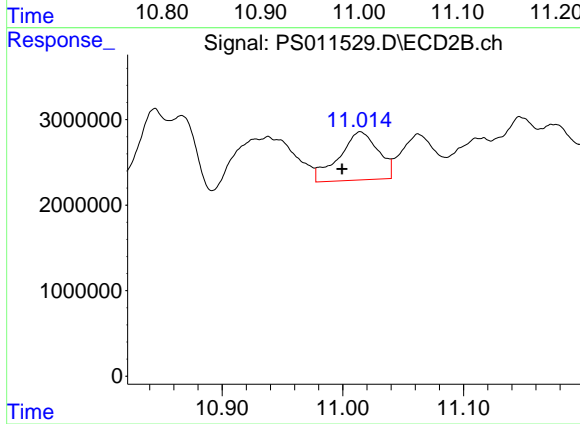
#14 DINOSEB

R.T.: 10.064 min
 Delta R.T.: 0.047 min
 Response: 65791629
 Conc: 30.67 ng/ml



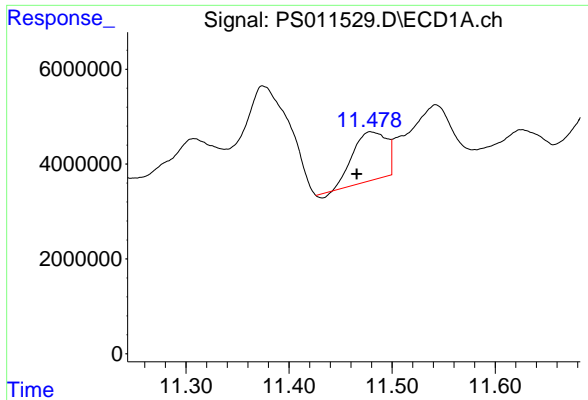
#15 Picloram

R.T.: 10.990 min
 Delta R.T.: -0.028 min
 Response: 7069133
 Conc: 1.12 ng/ml



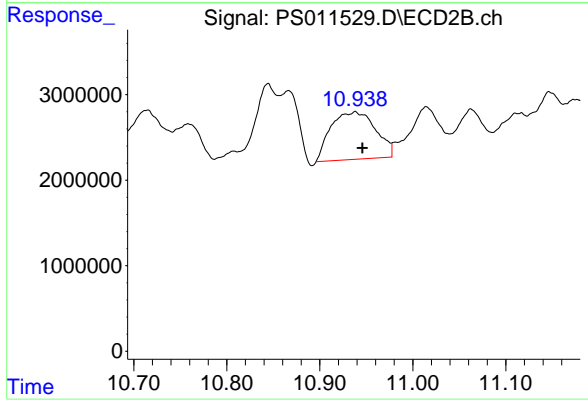
#15 Picloram

R.T.: 11.015 min
 Delta R.T.: 0.015 min
 Response: 12695800
 Conc: 2.90 ng/ml



#16 DCPA
 R.T.: 11.480 min
 Delta R.T.: 0.014 min
 Response: 23049420
 Conc: 3.58 ng/ml

Instrument :
 ECD_S
 ClientSampleId :



#16 DCPA
 R.T.: 10.938 min
 Delta R.T.: -0.008 min
 Response: 18611923
 Conc: 4.92 ng/ml