

Data Path : Z:\pestpcbsrv\HPCHEM1\ECD_S\Data\PS073119\
 Data File : PS005792.D
 Signal(s) : Signal #1: ECD1A.ch Signal #2: ECD2B.ch
 Acq On : 31 Jul 2019 17:26
 Operator : SM\AJ
 Sample : K4044-16
 Misc :
 ALS Vial : 14 Sample Multiplier: 1

Instrument :
 ECD_S
 ClientSampleId :

Integration File signal 1: autoint1.e
 Integration File signal 2: autoint2.e
 Quant Time: Jul 31 17:46:24 2019
 Quant Method : Z:\pestpcbsrv\HPCHEM1\ECD_S\Method\PS072619.M
 Quant Title : 8080.M
 QLast Update : Sat Jul 27 00:42:55 2019
 Response via : Initial Calibration
 Integrator: ChemStation

Volume Inj. : 2 µl
 Signal #1 Phase : Rtx-CLPesticides Signal #2 Phase: Rtx-CLPesticides2
 Signal #1 Info : 30M x 0.32mm x0.5 Signal #2 Info : 30M x 0.32mm x 0.25µm

	Compound	RT#1	RT#2	Resp#1	Resp#2	ng/ml	ng/ml

System Monitoring Compounds							
4) S	2,4-DCAA	5.560	5.279	273.1E6	202.4E6	188.251	203.452
Target Compounds							
2) T	3,5-DICHL...	0.000	4.597	0	46279243	N.D.	35.673
5) T	DICAMBA	5.781	5.413	21882069	26752660	3.664	7.166 #
7) T	MCPA	0.000	5.611	0	141.5E6	N.D.	33.627
10) T	Pentachlo...	6.841	6.612	25763535	16262541	1.232	1.253
11) T	2,4,5-TP ...	7.379	6.997	31667246	150.0E6	3.833	28.915 #
12) T	2,4,5-T	7.667	7.346	45512523	13655124	5.453	2.873 #
15) T	Picloram	0.000	9.099	0	21389643	N.D.	2.847
16) T	DCPA	9.548	9.038	32903664	14930250	3.236	2.264 #

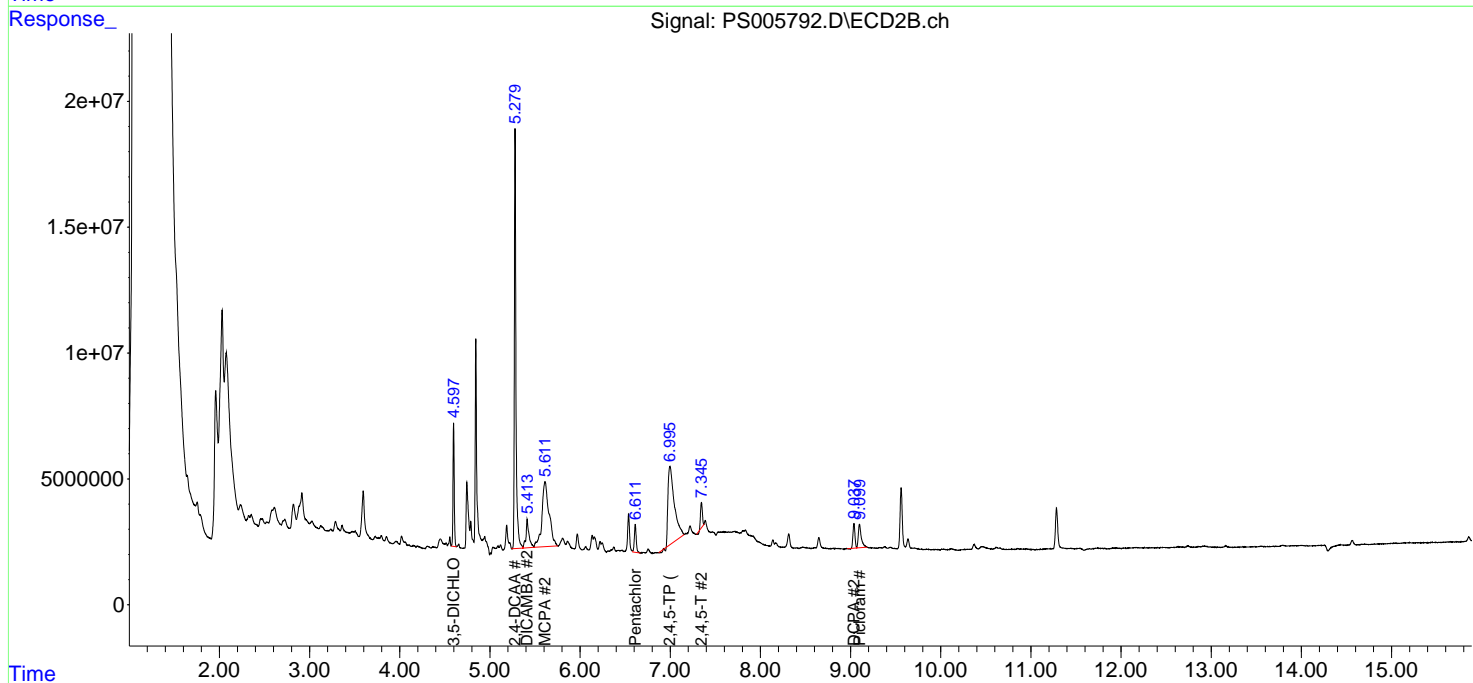
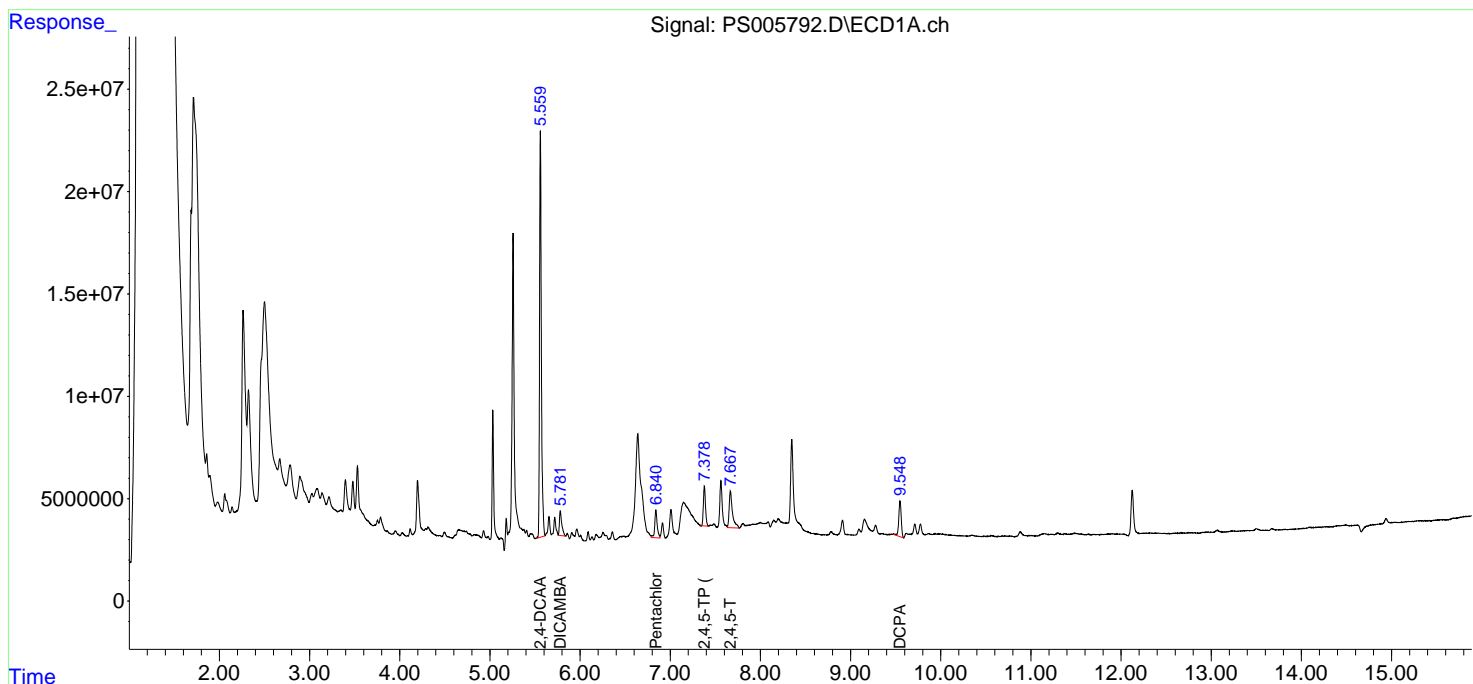
(f)=RT Delta > 1/2 Window (#)=Amounts differ by > 25% (m)=manual int.

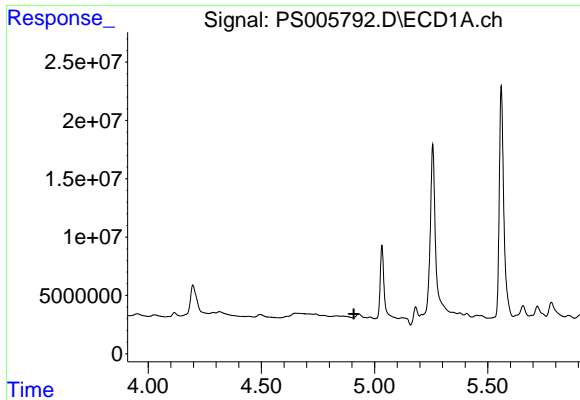
Data Path : Z:\pestpcbsrv\HPCHEM1\ECD_S\Data\PS073119\
 Data File : PS005792.D
 Signal(s) : Signal #1: ECD1A.ch Signal #2: ECD2B.ch
 Acq On : 31 Jul 2019 17:26
 Operator : SM\AJ
 Sample : K4044-16
 Misc :
 ALS Vial : 14 Sample Multiplier: 1

Instrument :
 ECD_S
 ClientSampled :

Integration File signal 1: autoint1.e
 Integration File signal 2: autoint2.e
 Quant Time: Jul 31 17:46:24 2019
 Quant Method : Z:\pestpcbsrv\HPCHEM1\ECD_S\Method\PS072619.M
 Quant Title : 8080.M
 QLast Update : Sat Jul 27 00:42:55 2019
 Response via : Initial Calibration
 Integrator: ChemStation

Volume Inj. : 2 µl
 Signal #1 Phase : Rtx-CLPesticides Signal #2 Phase: Rtx-CLPesticides2
 Signal #1 Info : 30M x 0.32mm x 0.5 Signal #2 Info : 30M x 0.32mm x 0.25µm

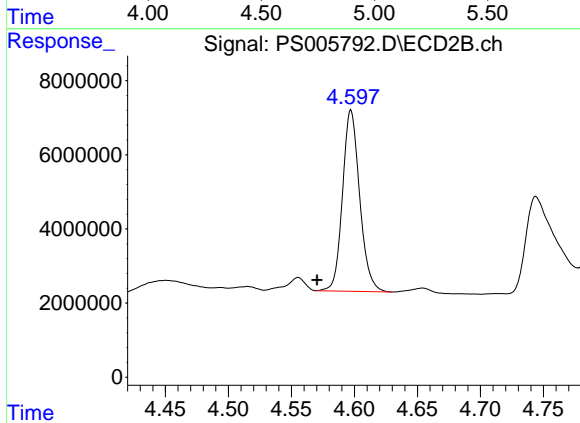




#2 3,5-DICHLOROBENZOIC ACID

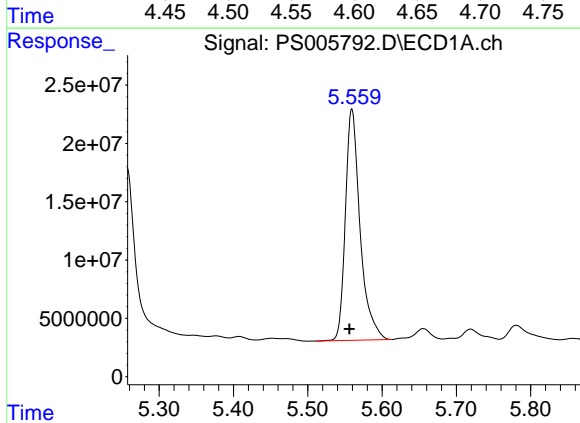
R.T.: 0.000 min
 Exp R.T.: 4.909 min
 Response: 0
 Conc: N.D.

Instrument :
 ECD_S
 ClientSampleId :



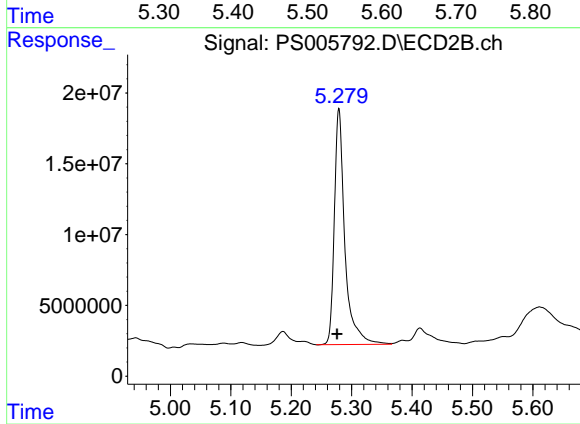
#2 3,5-DICHLOROBENZOIC ACID

R.T.: 4.597 min
 Delta R.T.: 0.027 min
 Response: 46279243
 Conc: 35.67 ng/ml



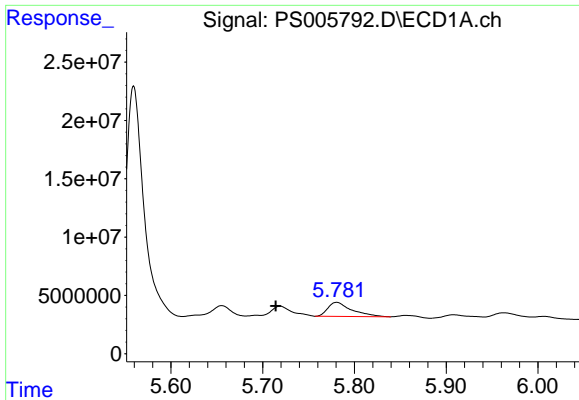
#4 2,4-DCAA

R.T.: 5.560 min
 Delta R.T.: 0.003 min
 Response: 273117297
 Conc: 188.25 ng/ml



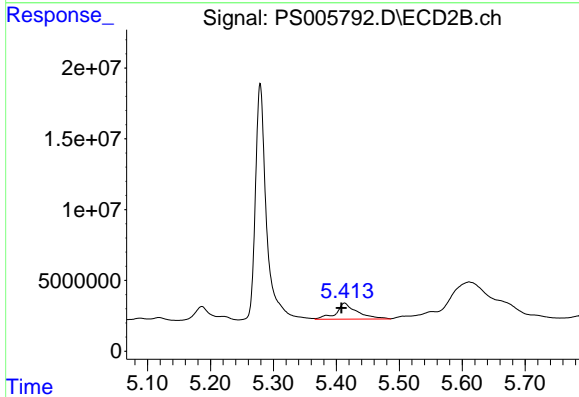
#4 2,4-DCAA

R.T.: 5.279 min
 Delta R.T.: 0.003 min
 Response: 202368986
 Conc: 203.45 ng/ml

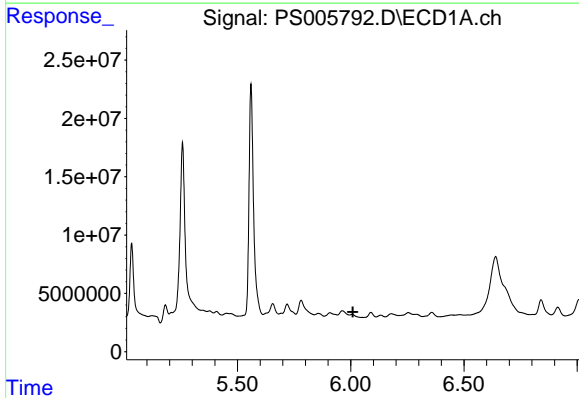


#5 DICAMBA
 R.T.: 5.781 min
 Delta R.T.: 0.067 min
 Response: 21882069
 Conc: 3.66 ng/ml

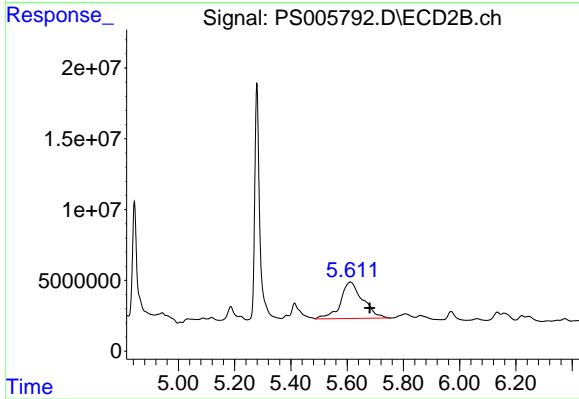
Instrument :
 ECD_S
 ClientSampled :



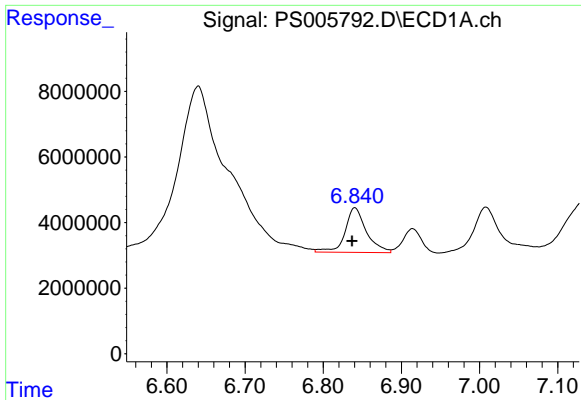
#5 DICAMBA
 R.T.: 5.413 min
 Delta R.T.: 0.005 min
 Response: 26752660
 Conc: 7.17 ng/ml



#7 MCPA
 R.T.: 0.000 min
 Exp R.T. : 6.009 min
 Response: 0
 Conc: N.D.



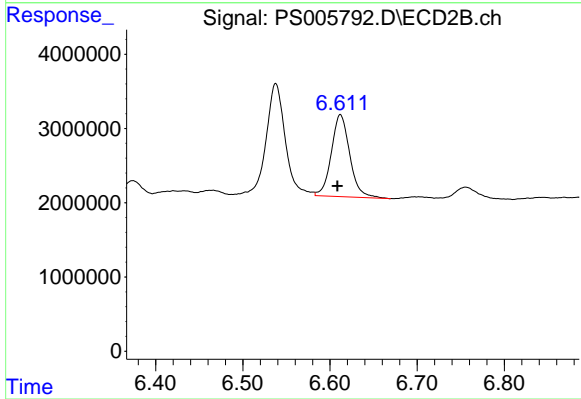
#7 MCPA
 R.T.: 5.611 min
 Delta R.T.: -0.070 min
 Response: 141538579
 Conc: 33.63 ug/ml



#10 Pentachlorophenol

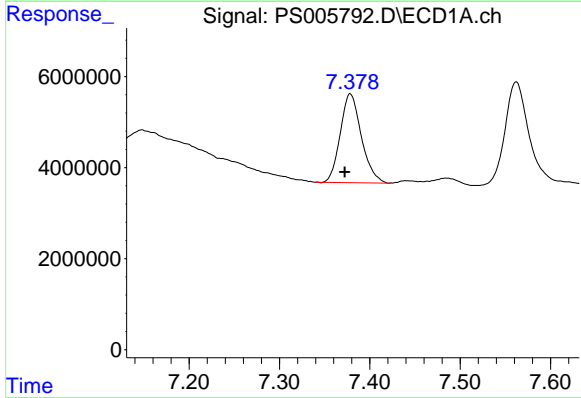
R.T.: 6.841 min
 Delta R.T.: 0.004 min
 Response: 25763535
 Conc: 1.23 ng/ml

Instrument :
 ECD_S
 ClientSampled :



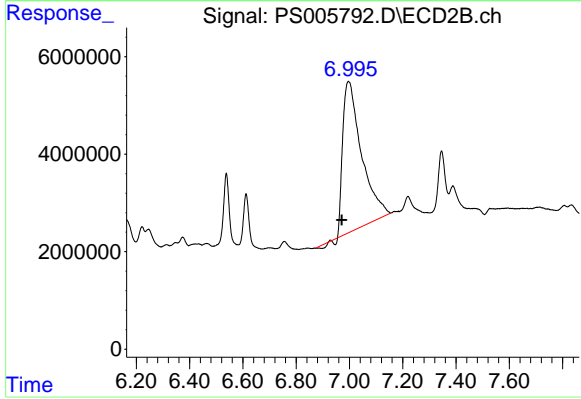
#10 Pentachlorophenol

R.T.: 6.612 min
 Delta R.T.: 0.004 min
 Response: 16262541
 Conc: 1.25 ng/ml



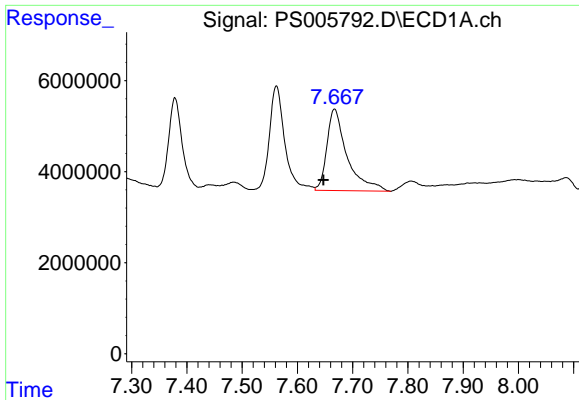
#11 2,4,5-TP (SILVEX)

R.T.: 7.379 min
 Delta R.T.: 0.006 min
 Response: 31667246
 Conc: 3.83 ng/ml



#11 2,4,5-TP (SILVEX)

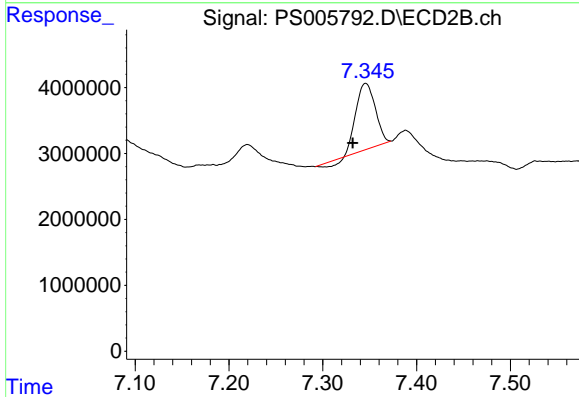
R.T.: 6.997 min
 Delta R.T.: 0.026 min
 Response: 149991065
 Conc: 28.92 ng/ml



#12 2,4,5-T

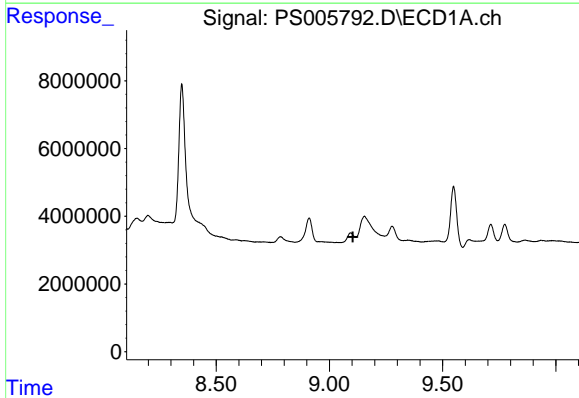
R.T.: 7.667 min
 Delta R.T.: 0.020 min
 Response: 45512523
 Conc: 5.45 ng/ml

Instrument :
 ECD_S
 ClientSampled :



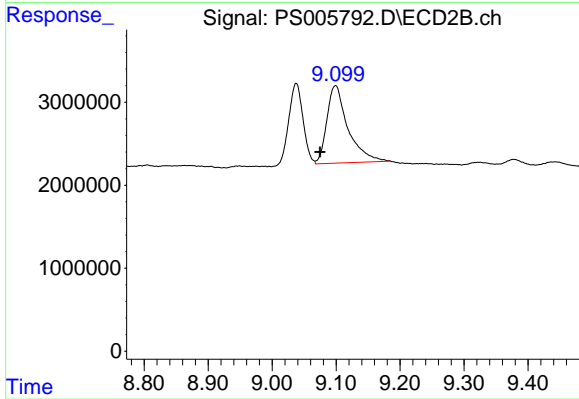
#12 2,4,5-T

R.T.: 7.346 min
 Delta R.T.: 0.014 min
 Response: 13655124
 Conc: 2.87 ng/ml



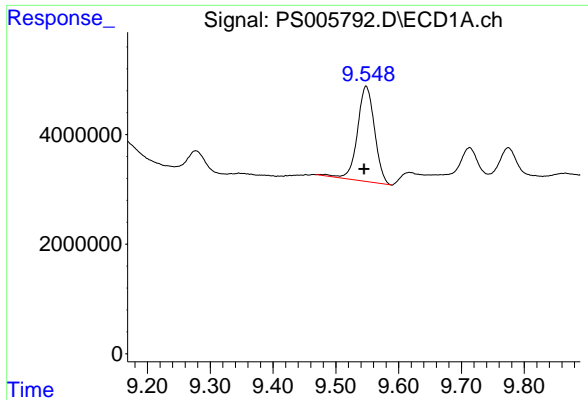
#15 Picloram

R.T.: 0.000 min
 Exp R.T. : 9.104 min
 Response: 0
 Conc: N.D.



#15 Picloram

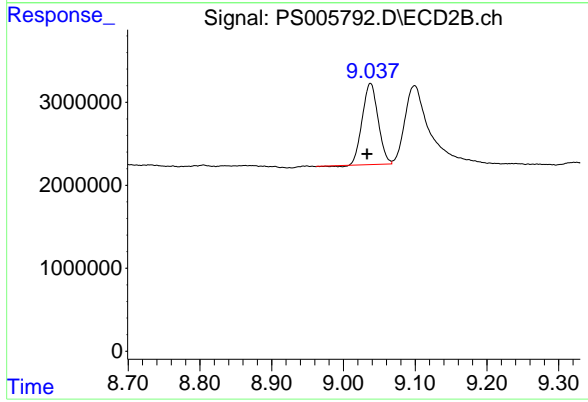
R.T.: 9.099 min
 Delta R.T.: 0.024 min
 Response: 21389643
 Conc: 2.85 ng/ml



#16 DCPA

R.T.: 9.548 min
 Delta R.T.: 0.003 min
 Response: 32903664
 Conc: 3.24 ng/ml

Instrument :
 ECD_S
 ClientSampleId :



#16 DCPA

R.T.: 9.038 min
 Delta R.T.: 0.005 min
 Response: 14930250
 Conc: 2.26 ng/ml