

Data Path : Z:\pestpcbsrv\HPCHEM1\ECD_S\Data\PS073120\
 Data File : PS011538.D
 Signal(s) : Signal #1: ECD1A.ch Signal #2: ECD2B.ch
 Acq On : 31 Jul 2020 10:38
 Operator : DD\AJ
 Sample : PB130621BL
 Misc :
 ALS Vial : 4 Sample Multiplier: 1

Instrument :
 ECD_S
 ClientSampleId :

Integration File signal 1: autoint1.e
 Integration File signal 2: autoint2.e
 Quant Time: Jul 31 11:52:44 2020
 Quant Method : Z:\pestpcbsrv\HPCHEM1\ECD_S\Method\PS071320.M
 Quant Title : 8080.M
 QLast Update : Mon Jul 13 16:10:29 2020
 Response via : Initial Calibration
 Integrator: ChemStation

Volume Inj. : 2 µl
 Signal #1 Phase : Rtx-CLPesticides Signal #2 Phase: Rtx-CLPesticides2
 Signal #1 Info : 30M x 0.32mm x0.5 Signal #2 Info : 30M x 0.32mm x 0.25µm

	Compound	RT#1	RT#2	Resp#1	Resp#2	ng/ml	ng/ml

System Monitoring Compounds							
4) S	2,4-DCAA	7.228	6.916	687.2E6	436.4E6	708.248	775.024
Target Compounds							
1) T	Dalapon	2.996	2.581	81508531	57438021	67.734	74.821
2) T	3,5-DICHL...	0.000	6.096	0	99405299	N.D.	118.362
3) T	4-Nitroph...	6.999	6.506	4883107	2904956	11.077	8.860
5) T	DICAMBA	7.408	7.050	8362611	5045601	2.158	2.203
6) T	MCP P	7.582	7.217	7358051	50039644	2.430	26.225 #
7) T	MCPA	7.776	7.379	24997303	20555746	5.861	7.132
8) T	DICHLORPROP	0.000	7.740	0	25030461	N.D.	41.584
9) T	2,4-D	0.000	7.949	0	13313553	N.D.	17.759
10) T	Pentachlo...	0.000	8.427	0	2984903	N.D.	<MDL
11) T	2,4,5-TP ...	0.000	8.767	0	13208041	N.D.	4.320
12) T	2,4,5-T	9.506	9.183	14629665	4288840	2.899	1.414 #
14) T	DINOSEB	11.164	10.038	20047560	9023455	5.201	4.207
15) T	Picloram	11.038	11.011	188.9E6	181.6E6	29.930	41.519 #
16) T	DCPA	0.000	10.943	0	8811058	N.D.	2.330

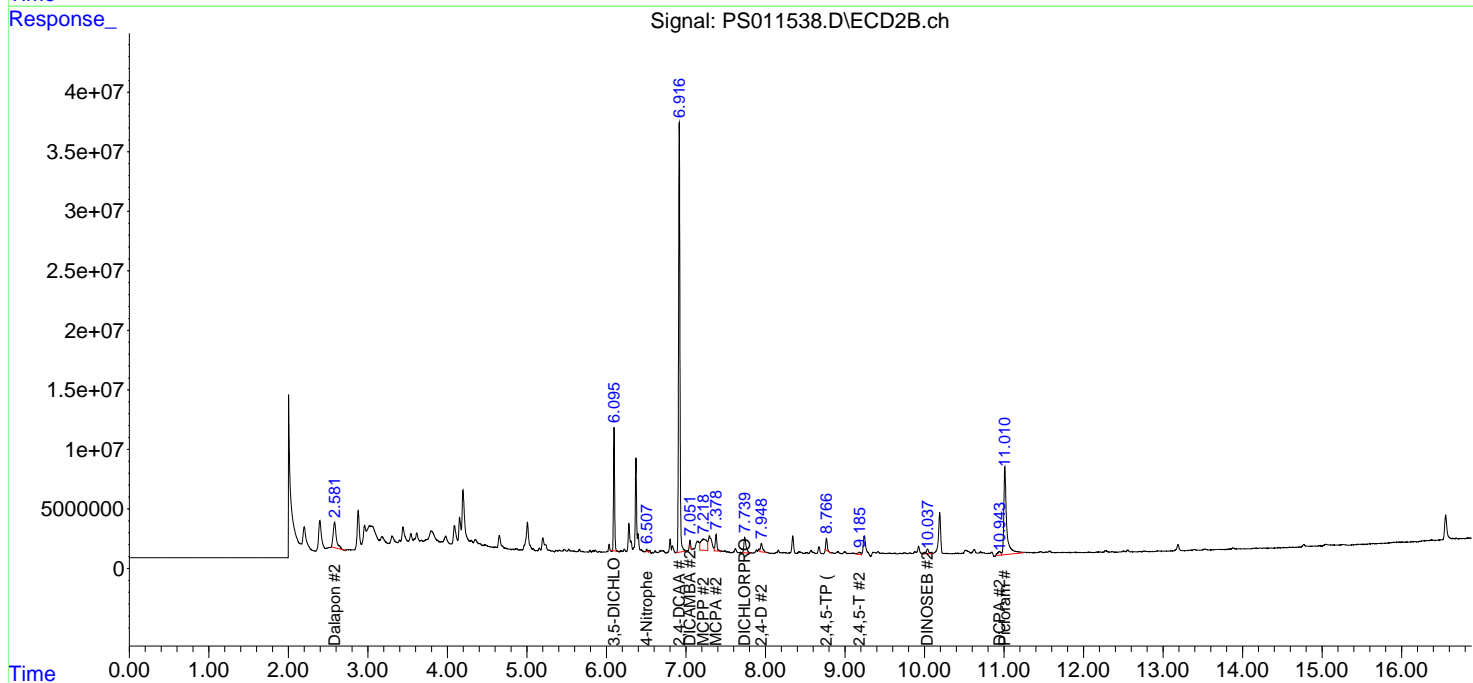
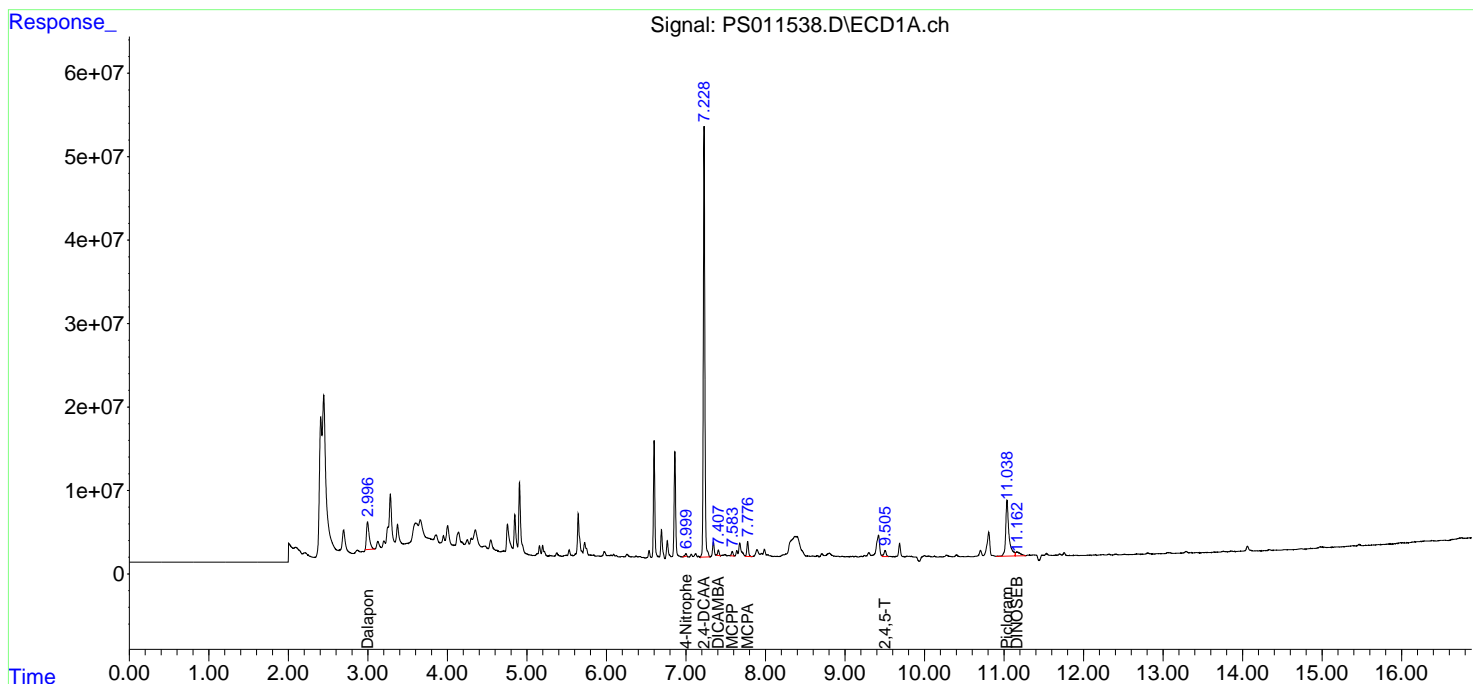
(f)=RT Delta > 1/2 Window (#)=Amounts differ by > 25% (m)=manual int.

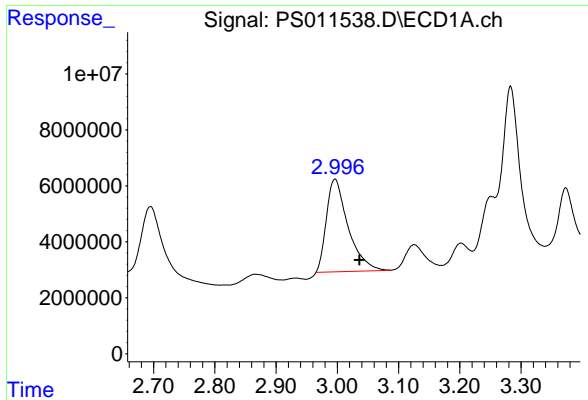
Data Path : Z:\pestpcbsrv\HPCHEM1\ECD_S\Data\PS073120\
 Data File : PS011538.D
 Signal(s) : Signal #1: ECD1A.ch Signal #2: ECD2B.ch
 Acq On : 31 Jul 2020 10:38
 Operator : DD\AJ
 Sample : PB130621BL
 Misc :
 ALS Vial : 4 Sample Multiplier: 1

Instrument :
 ECD_S
 ClientSampled :

Integration File signal 1: autoint1.e
 Integration File signal 2: autoint2.e
 Quant Time: Jul 31 11:52:44 2020
 Quant Method : Z:\pestpcbsrv\HPCHEM1\ECD_S\Method\PS071320.M
 Quant Title : 8080.M
 QLast Update : Mon Jul 13 16:10:29 2020
 Response via : Initial Calibration
 Integrator: ChemStation

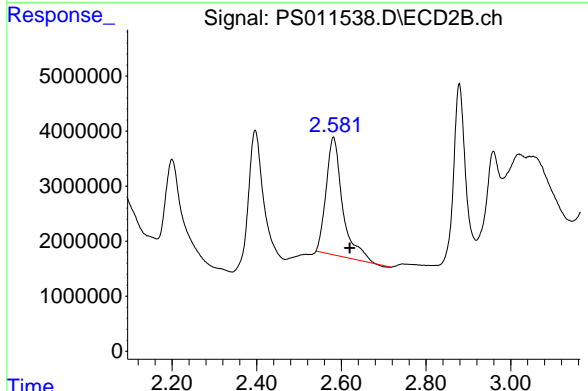
Volume Inj. : 2 µl
 Signal #1 Phase : Rtx-CLPesticides Signal #2 Phase: Rtx-CLPesticides2
 Signal #1 Info : 30M x 0.32mm x0.5 Signal #2 Info : 30M x 0.32mm x 0.25µm



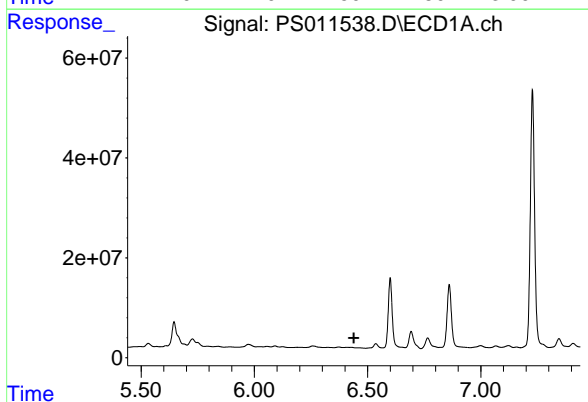


#1 Dalapon
 R.T.: 2.996 min
 Delta R.T.: -0.040 min
 Response: 81508531
 Conc: 67.73 ng/ml

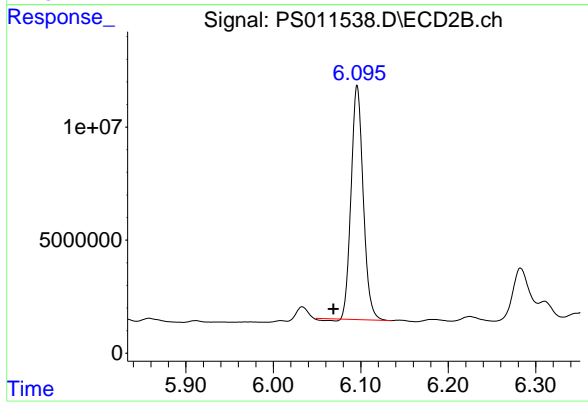
Instrument :
 ECD_S
 ClientSampleId :



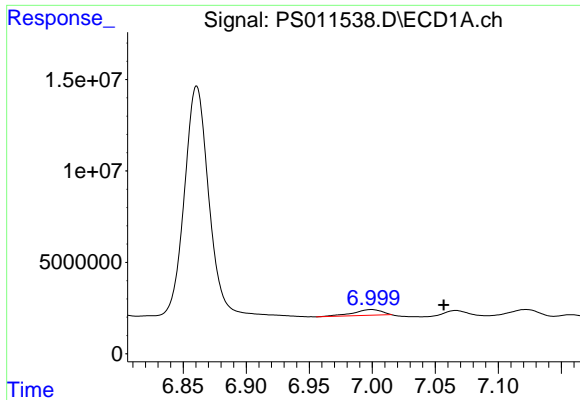
#1 Dalapon
 R.T.: 2.581 min
 Delta R.T.: -0.039 min
 Response: 57438021
 Conc: 74.82 ng/ml



#2 3,5-DICHLOROBENZOIC ACID
 R.T.: 0.000 min
 Exp R.T. : 6.439 min
 Response: 0
 Conc: N.D.

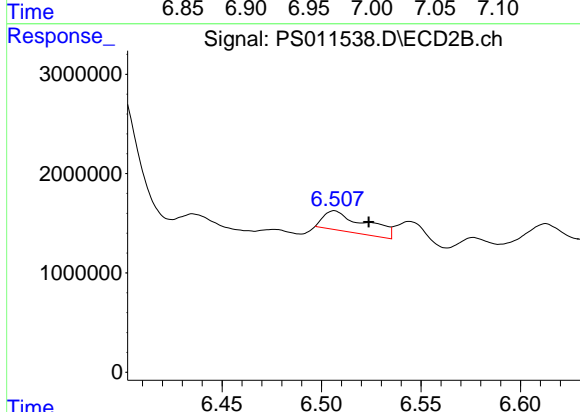


#2 3,5-DICHLOROBENZOIC ACID
 R.T.: 6.096 min
 Delta R.T.: 0.027 min
 Response: 99405299
 Conc: 118.36 ng/ml

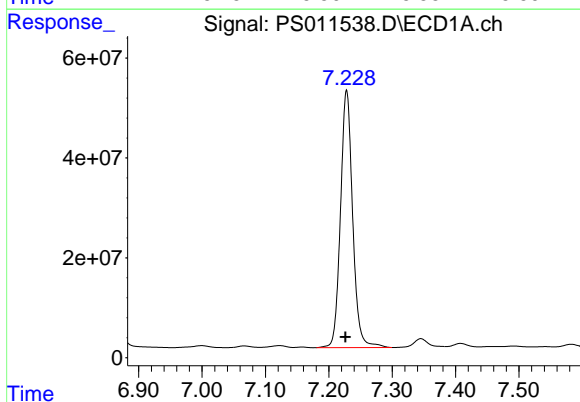


#3 4-Nitrophenol
 R.T.: 6.999 min
 Delta R.T.: -0.058 min
 Response: 4883107
 Conc: 11.08 ng/ml

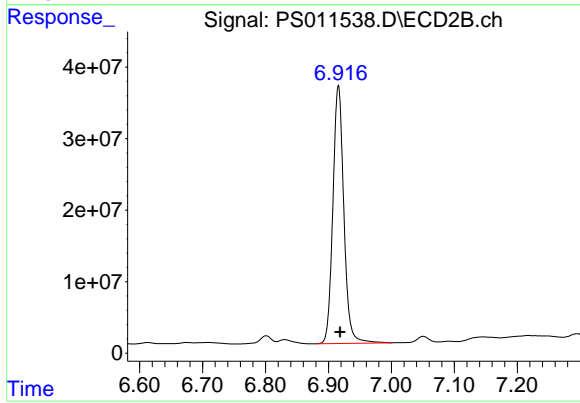
Instrument :
 ECD_S
 ClientSampleId :



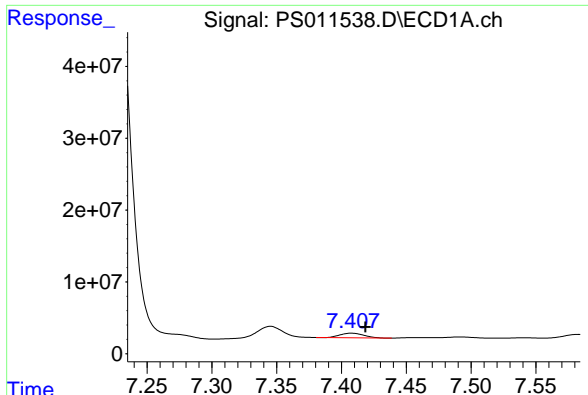
#3 4-Nitrophenol
 R.T.: 6.506 min
 Delta R.T.: -0.017 min
 Response: 2904956
 Conc: 8.86 ng/ml



#4 2,4-DCAA
 R.T.: 7.228 min
 Delta R.T.: 0.002 min
 Response: 687239621
 Conc: 708.25 ng/ml

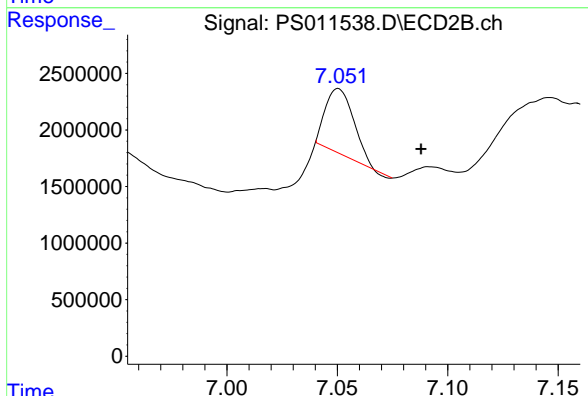


#4 2,4-DCAA
 R.T.: 6.916 min
 Delta R.T.: -0.003 min
 Response: 436355830
 Conc: 775.02 ng/ml

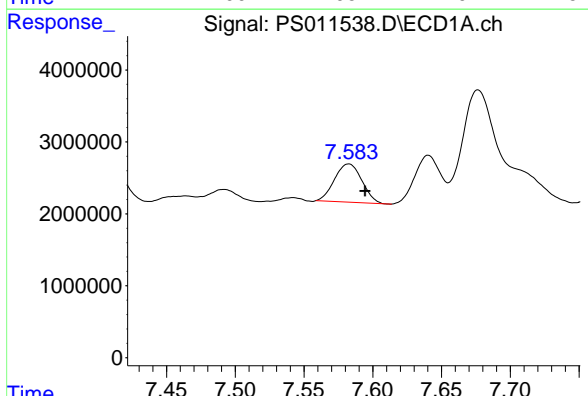


#5 DICAMBA
 R.T.: 7.408 min
 Delta R.T.: -0.011 min
 Response: 8362611
 Conc: 2.16 ng/ml

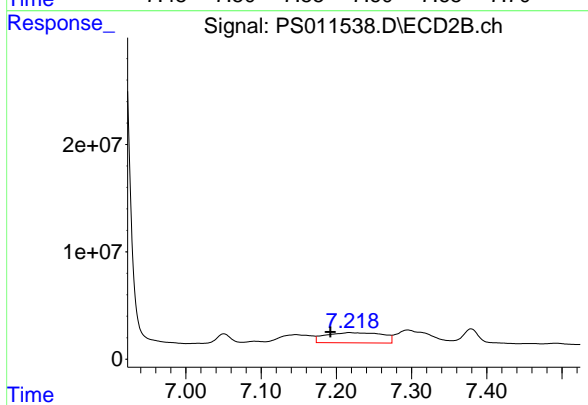
Instrument :
 ECD_S
 ClientSampleId :



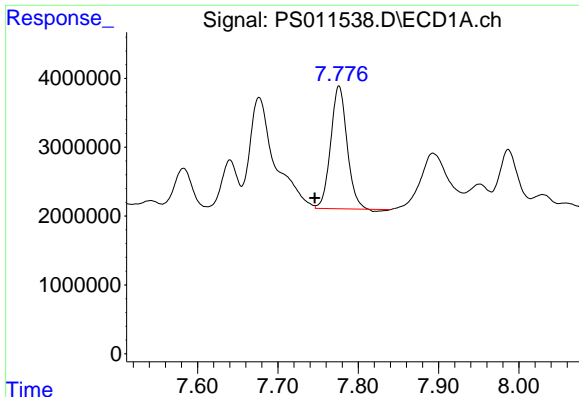
#5 DICAMBA
 R.T.: 7.050 min
 Delta R.T.: -0.037 min
 Response: 5045601
 Conc: 2.20 ng/ml



#6 MCP
 R.T.: 7.582 min
 Delta R.T.: -0.012 min
 Response: 7358051
 Conc: 2.43 ug/ml



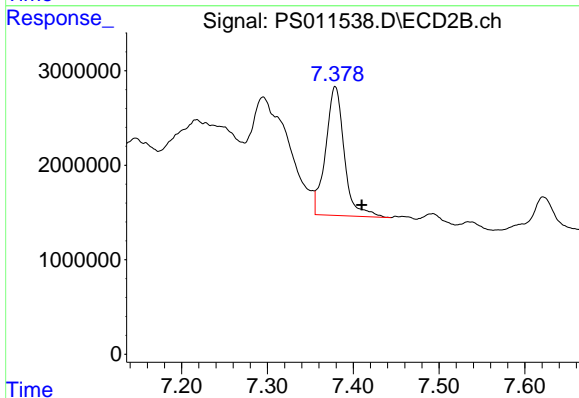
#6 MCP
 R.T.: 7.217 min
 Delta R.T.: 0.025 min
 Response: 50039644
 Conc: 26.23 ug/ml



#7 MCPA

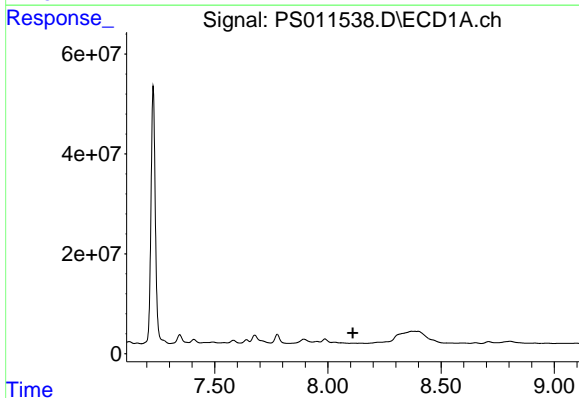
R.T.: 7.776 min
 Delta R.T.: 0.030 min
 Response: 24997303
 Conc: 5.86 ug/ml

Instrument :
 ECD_S
 ClientSampled :



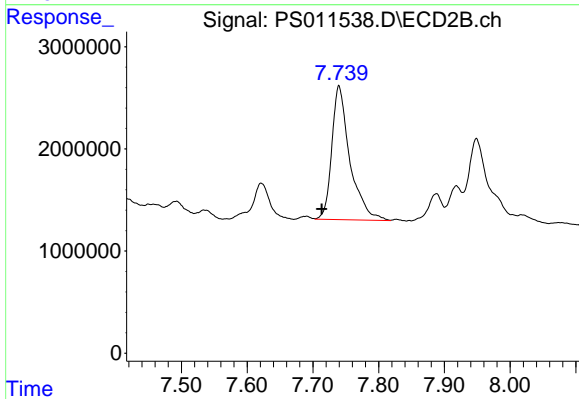
#7 MCPA

R.T.: 7.379 min
 Delta R.T.: -0.031 min
 Response: 20555746
 Conc: 7.13 ug/ml



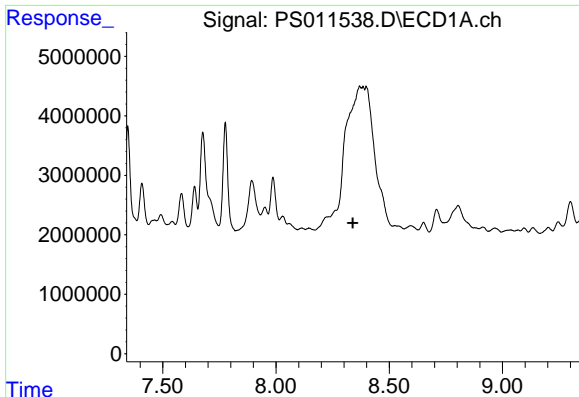
#8 DICHLORPROP

R.T.: 0.000 min
 Exp R.T. : 8.110 min
 Response: 0
 Conc: N.D.



#8 DICHLORPROP

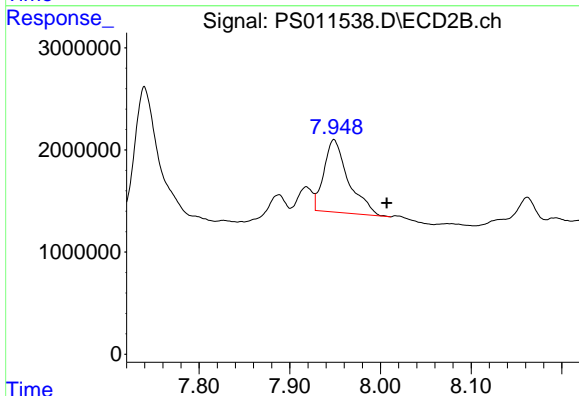
R.T.: 7.740 min
 Delta R.T.: 0.026 min
 Response: 25030461
 Conc: 41.58 ng/ml



#9 2,4-D

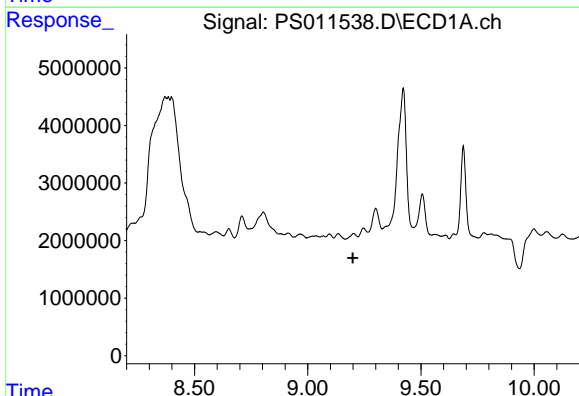
R.T.: 0.000 min
 Exp R.T. : 8.339 min
 Response: 0
 Conc: N.D.

Instrument :
 ECD_S
 ClientSampleId :



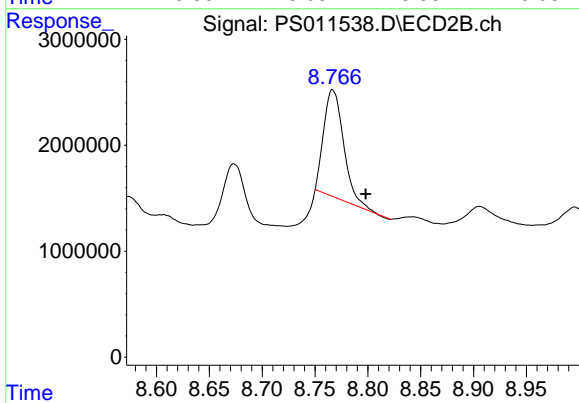
#9 2,4-D

R.T.: 7.949 min
 Delta R.T.: -0.058 min
 Response: 13313553
 Conc: 17.76 ng/ml



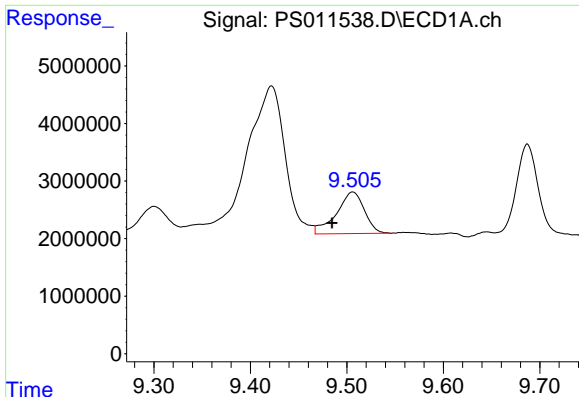
#11 2,4,5-TP (SILVEX)

R.T.: 0.000 min
 Exp R.T. : 9.200 min
 Response: 0
 Conc: N.D.



#11 2,4,5-TP (SILVEX)

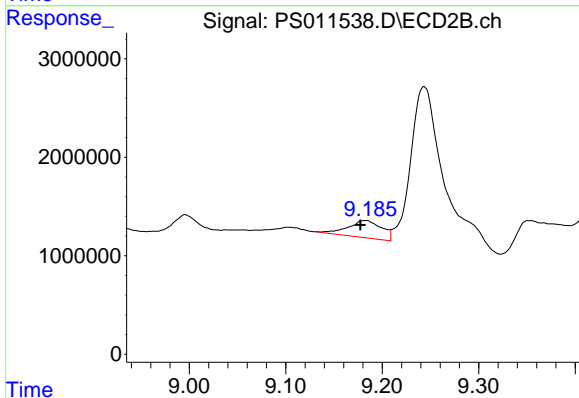
R.T.: 8.767 min
 Delta R.T.: -0.031 min
 Response: 13208041
 Conc: 4.32 ng/ml



#12 2,4,5-T

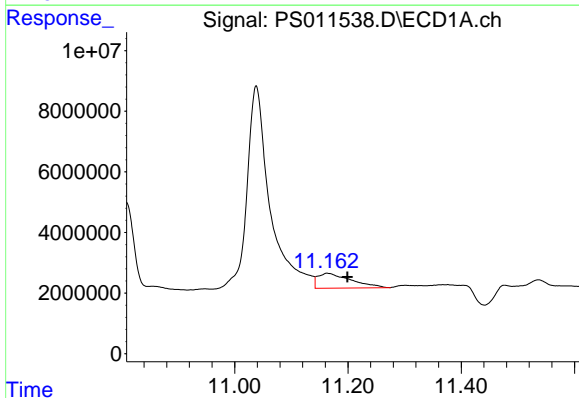
R.T.: 9.506 min
 Delta R.T.: 0.022 min
 Response: 14629665
 Conc: 2.90 ng/ml

Instrument :
 ECD_S
 ClientSampleId :



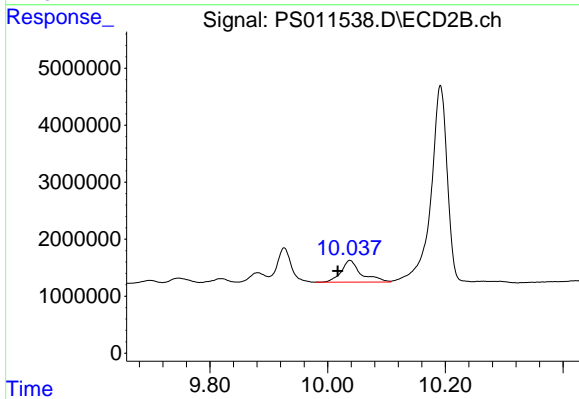
#12 2,4,5-T

R.T.: 9.183 min
 Delta R.T.: 0.006 min
 Response: 4288840
 Conc: 1.41 ng/ml



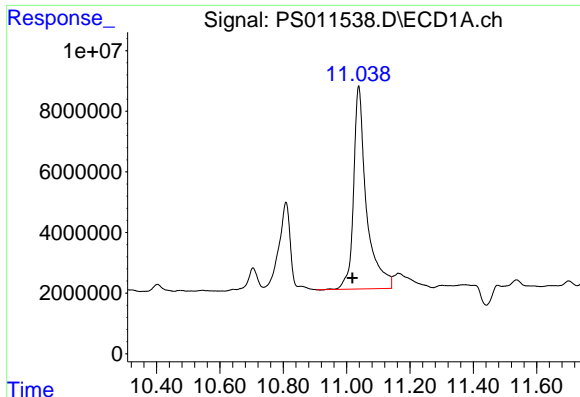
#14 DINOSEB

R.T.: 11.164 min
 Delta R.T.: -0.035 min
 Response: 20047560
 Conc: 5.20 ng/ml



#14 DINOSEB

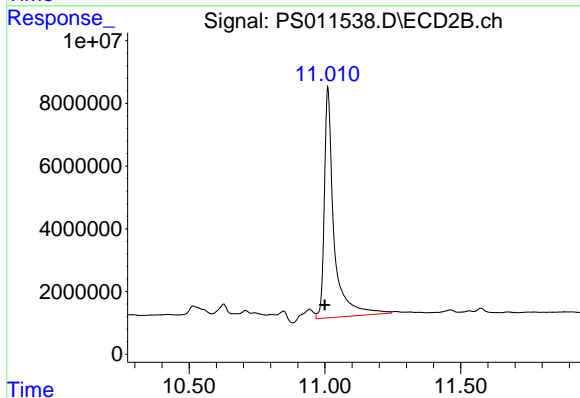
R.T.: 10.038 min
 Delta R.T.: 0.021 min
 Response: 9023455
 Conc: 4.21 ng/ml



#15 Picloram

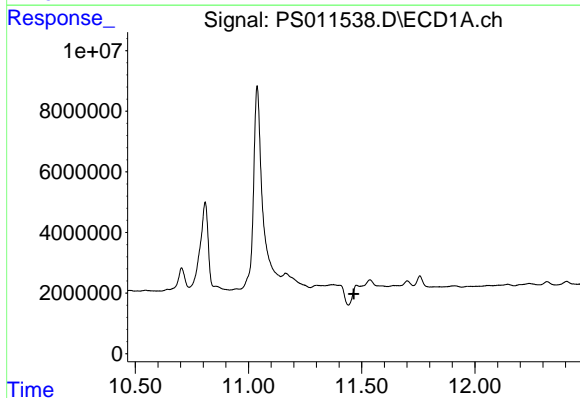
R.T.: 11.038 min
 Delta R.T.: 0.020 min
 Response: 188853483
 Conc: 29.93 ng/ml

Instrument :
 ECD_S
 ClientSampled :



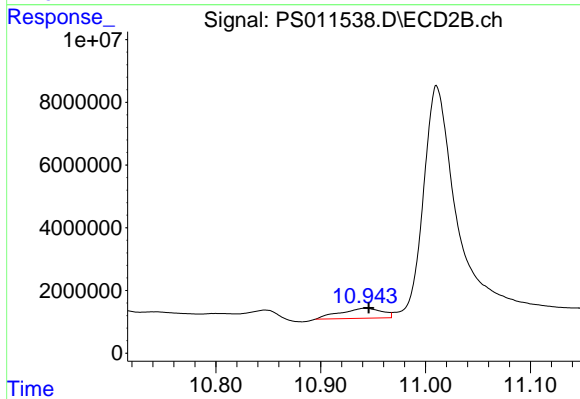
#15 Picloram

R.T.: 11.011 min
 Delta R.T.: 0.011 min
 Response: 181575486
 Conc: 41.52 ng/ml



#16 DCPA

R.T.: 0.000 min
 Exp R.T. : 11.466 min
 Response: 0
 Conc: N.D.



#16 DCPA

R.T.: 10.943 min
 Delta R.T.: -0.003 min
 Response: 8811058
 Conc: 2.33 ng/ml