

Data Path : Z:\pestpcbsrv\HPCHEM1\ECD\_S\Data\PS073120\  
 Data File : PS011542.D  
 Signal(s) : Signal #1: ECD1A.ch Signal #2: ECD2B.ch  
 Acq On : 31 Jul 2020 12:11  
 Operator : DD\AJ  
 Sample : L3435-05MSD  
 Misc :  
 ALS Vial : 8 Sample Multiplier: 1

Instrument :  
 ECD\_S  
 ClientSampleId :

Integration File signal 1: autoint1.e  
 Integration File signal 2: autoint2.e  
 Quant Time: Jul 31 12:39:00 2020  
 Quant Method : Z:\pestpcbsrv\HPCHEM1\ECD\_S\Method\PS071320.M  
 Quant Title : 8080.M  
 QLast Update : Mon Jul 13 16:10:29 2020  
 Response via : Initial Calibration  
 Integrator: ChemStation

Volume Inj. : 2 µl  
 Signal #1 Phase : Rtx-CLPesticides Signal #2 Phase: Rtx-CLPesticides2  
 Signal #1 Info : 30M x 0.32mm x0.5 Signal #2 Info : 30M x 0.32mm x 0.25µm

	Compound	RT#1	RT#2	Resp#1	Resp#2	ng/ml	ng/ml
-----							
System Monitoring Compounds							
4) S	2,4-DCAA	7.209	6.920	65171147	2087197	67.163	3.707 #
Target Compounds							
1) T	Dalapon	3.038	2.625	831.1E6	-194445086	690.677	N.D. #
2) T	3,5-DICHL...	6.438	6.068	1232.9E6	722.4E6	921.337	860.161
3) T	4-Nitroph...	7.056	6.523	278.6E6	177.2E6	631.990	540.416
5) T	DICAMBA	7.416	7.085	3219.9E6	1827.4E6	830.758	798.000
6) T	MCPD	7.588	7.186	340.5E6	178.3E6	112.449	93.451
7) T	MCPA	7.738	7.402	407.4E6	327.9E6	95.521	113.757
8) T	DICHLORPROP	8.108	7.711	888.4E6	572.6E6	947.611	951.270
9) T	2,4-D	8.337	8.005	1082.6E6	791.0E6	1138.321	1055.195
10) T	Pentachlo...	8.648	8.434	10967.6E6	5563.5E6	829.703	798.241
11) T	2,4,5-TP ...	9.197	8.794	5048.2E6	3498.8E6	953.249	1144.421
12) T	2,4,5-T	9.482	9.174	4790.0E6	2815.3E6	949.297	928.205
13) T	2,4-DB	10.035	9.680	618.9E6	451.7E6	960.205	1056.560
14) T	DINOSEB	11.195	10.014	2655.9E6	1544.5E6	689.005	720.066
15) T	Picloram	11.015	10.996	5327.4E6	3393.0E6	844.297	775.844
16) T	DCPA	11.462	10.943	5595.1E6	3582.9E6	868.403	947.378
-----							

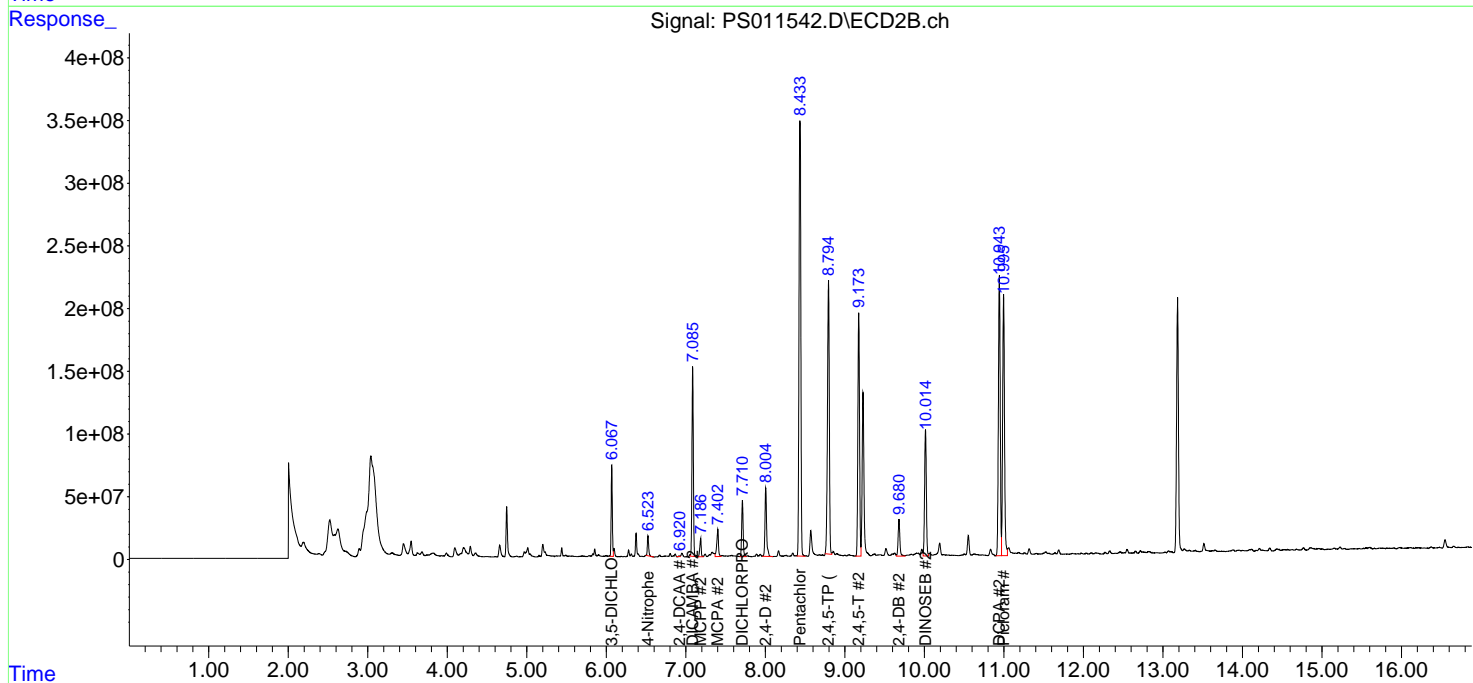
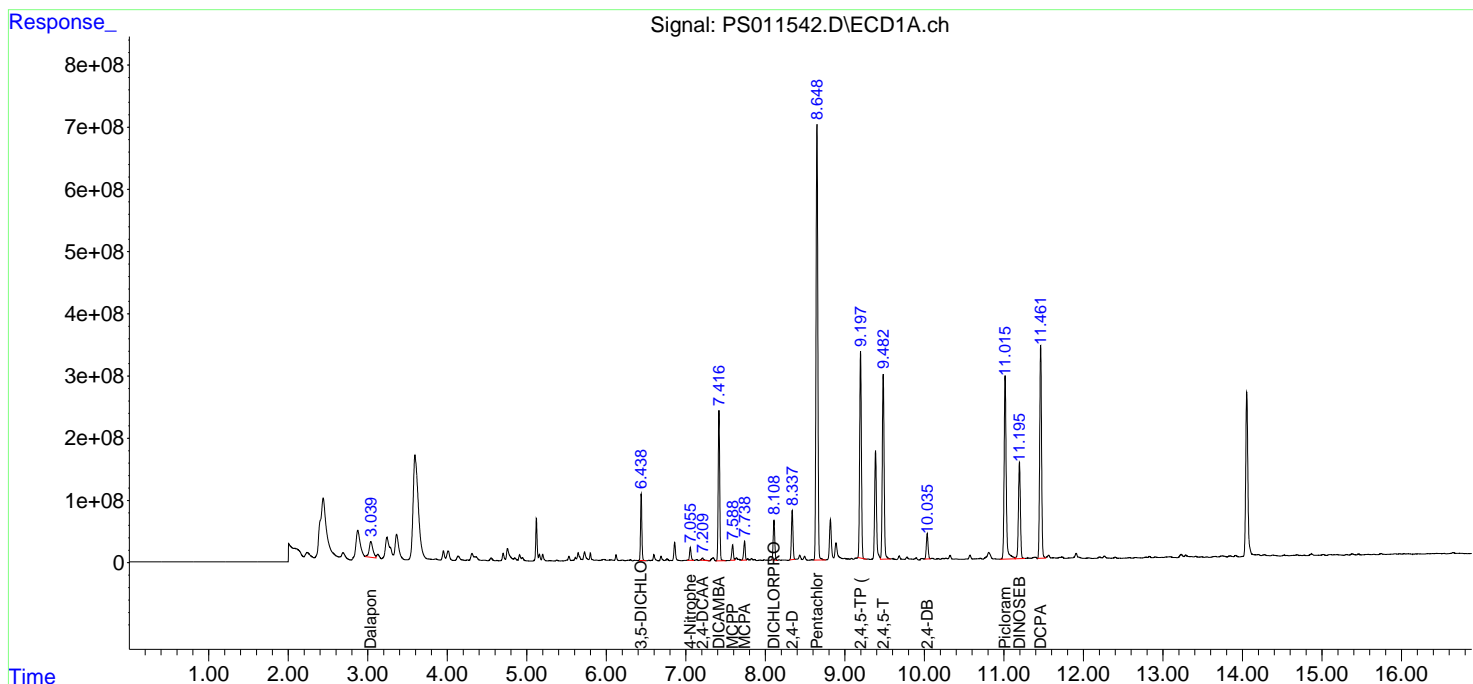
(f)=RT Delta > 1/2 Window (#)=Amounts differ by > 25% (m)=manual int.

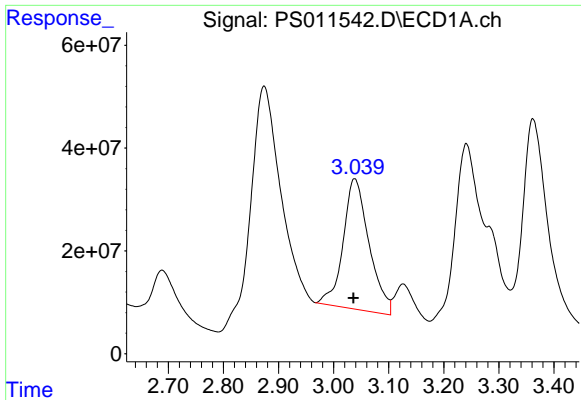
Data Path : Z:\pestpcbsrv\HPCHEM1\ECD\_S\Data\PS071320\  
 Data File : PS011542.D  
 Signal(s) : Signal #1: ECD1A.ch Signal #2: ECD2B.ch  
 Acq On : 31 Jul 2020 12:11  
 Operator : DD\AJ  
 Sample : L3435-05MSD  
 Misc :  
 ALS Vial : 8 Sample Multiplier: 1

Instrument :  
 ECD\_S  
 ClientSampled :

Integration File signal 1: autoint1.e  
 Integration File signal 2: autoint2.e  
 Quant Time: Jul 31 12:39:00 2020  
 Quant Method : Z:\pestpcbsrv\HPCHEM1\ECD\_S\Method\PS071320.M  
 Quant Title : 8080.M  
 QLast Update : Mon Jul 13 16:10:29 2020  
 Response via : Initial Calibration  
 Integrator: ChemStation

Volume Inj. : 2 µl  
 Signal #1 Phase : Rtx-CLPesticides Signal #2 Phase: Rtx-CLPesticides2  
 Signal #1 Info : 30M x 0.32mm x0.5 Signal #2 Info : 30M x 0.32mm x 0.25µm

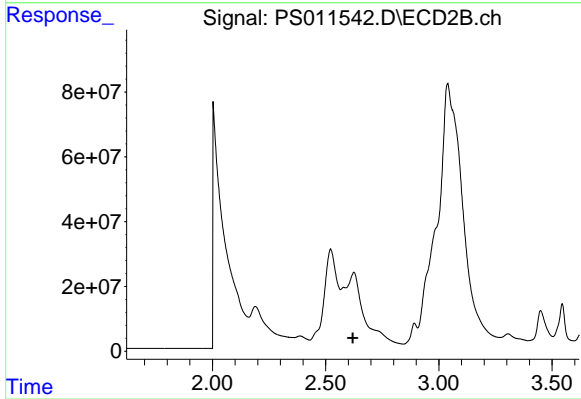




#1 Dalapon

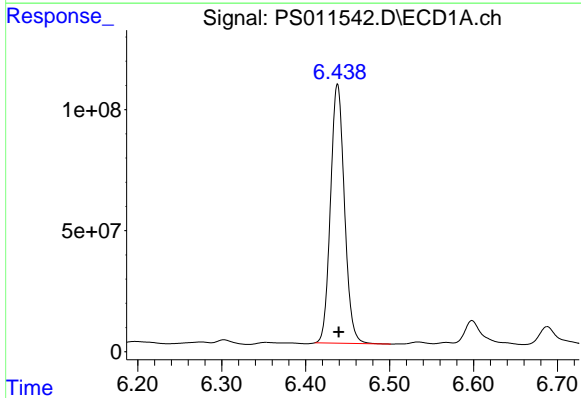
R.T.: 3.038 min  
 Delta R.T.: 0.002 min  
 Response: 831139620  
 Conc: 690.68 ng/ml

Instrument :  
 ECD\_S  
 ClientSampled :



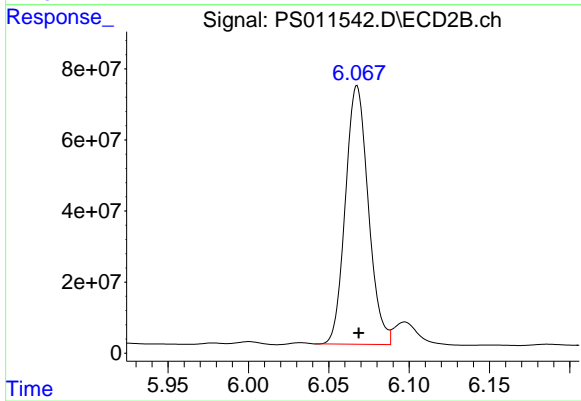
#1 Dalapon

R.T.: 2.625 min  
 Delta R.T.: 0.004 min  
 Response: -194445086  
 Conc: N.D.



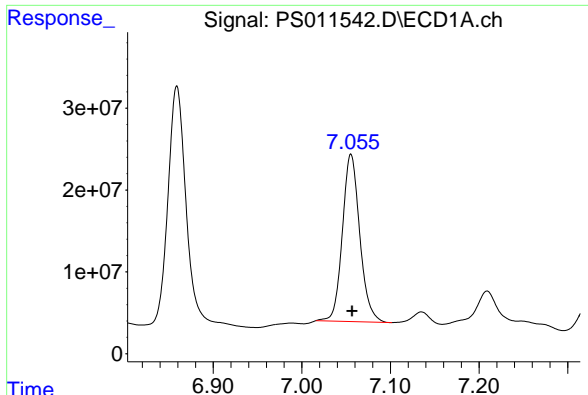
#2 3,5-DICHLOROBENZOIC ACID

R.T.: 6.438 min  
 Delta R.T.: -0.001 min  
 Response: 1232894315  
 Conc: 921.34 ng/ml



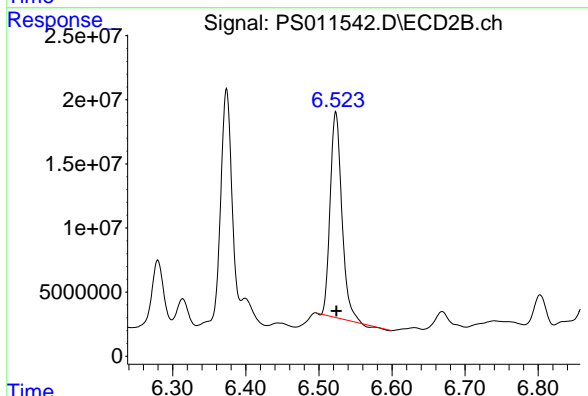
#2 3,5-DICHLOROBENZOIC ACID

R.T.: 6.068 min  
 Delta R.T.: 0.000 min  
 Response: 722400915  
 Conc: 860.16 ng/ml

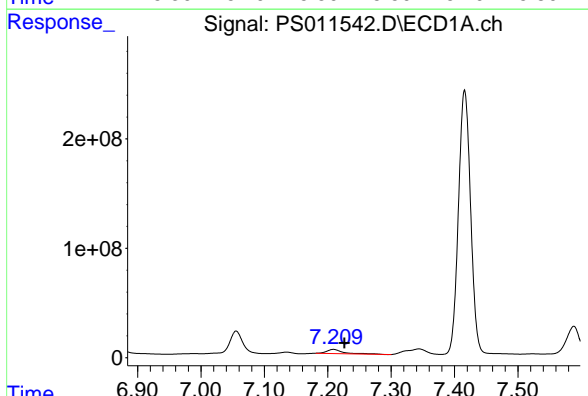


#3 4-Nitrophenol  
 R.T.: 7.056 min  
 Delta R.T.: -0.001 min  
 Response: 278608479  
 Conc: 631.99 ng/ml

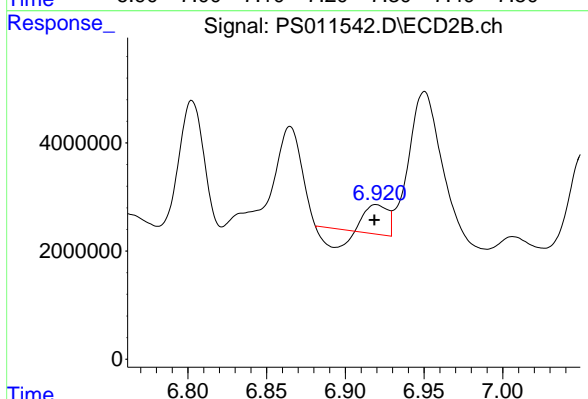
Instrument :  
 ECD\_S  
 ClientSampled :



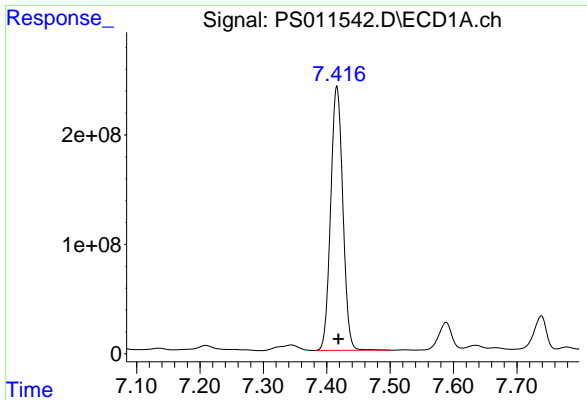
#3 4-Nitrophenol  
 R.T.: 6.523 min  
 Delta R.T.: 0.000 min  
 Response: 177190883  
 Conc: 540.42 ng/ml



#4 2,4-DCAA  
 R.T.: 7.209 min  
 Delta R.T.: -0.017 min  
 Response: 65171147  
 Conc: 67.16 ng/ml



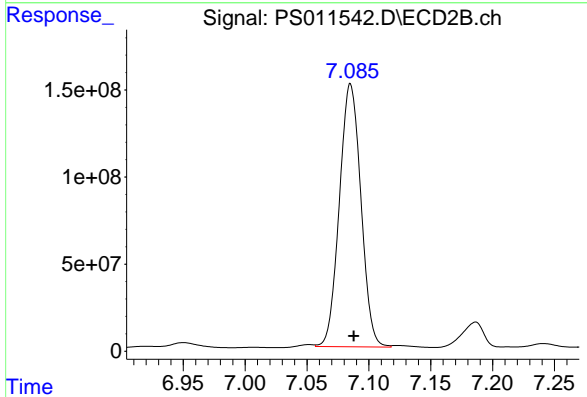
#4 2,4-DCAA  
 R.T.: 6.920 min  
 Delta R.T.: 0.001 min  
 Response: 2087197  
 Conc: 3.71 ng/ml



#5 DICAMBA

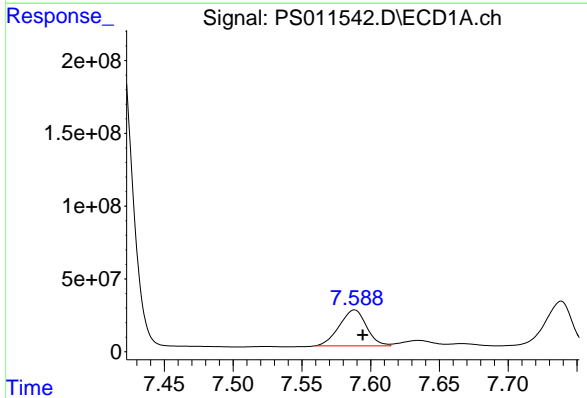
R.T.: 7.416 min  
 Delta R.T.: -0.003 min  
 Response: 3219906410  
 Conc: 830.76 ng/ml

Instrument :  
 ECD\_S  
 ClientSampled :



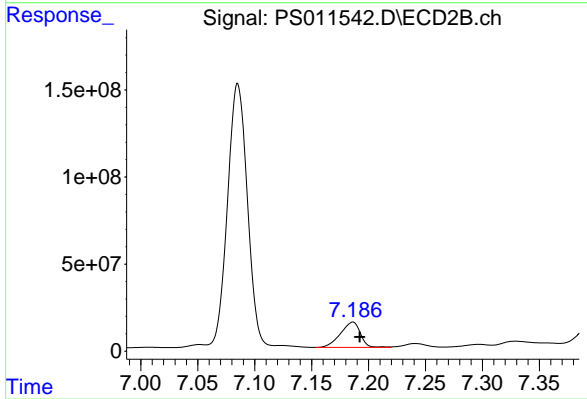
#5 DICAMBA

R.T.: 7.085 min  
 Delta R.T.: -0.003 min  
 Response: 1827391218  
 Conc: 798.00 ng/ml



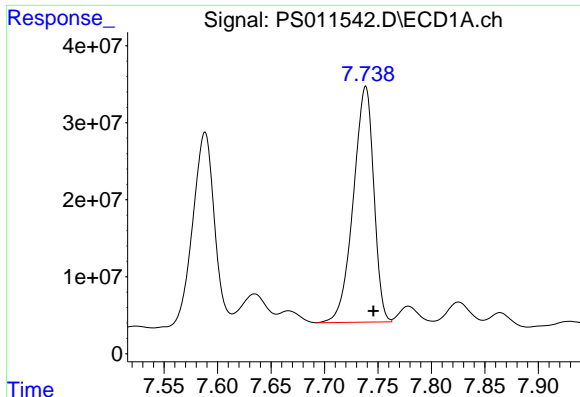
#6 MCPP

R.T.: 7.588 min  
 Delta R.T.: -0.006 min  
 Response: 340514386  
 Conc: 112.45 ug/ml



#6 MCPP

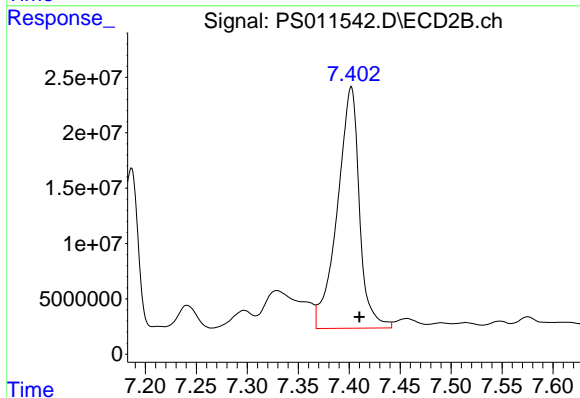
R.T.: 7.186 min  
 Delta R.T.: -0.006 min  
 Response: 178311812  
 Conc: 93.45 ug/ml



#7 MCPA

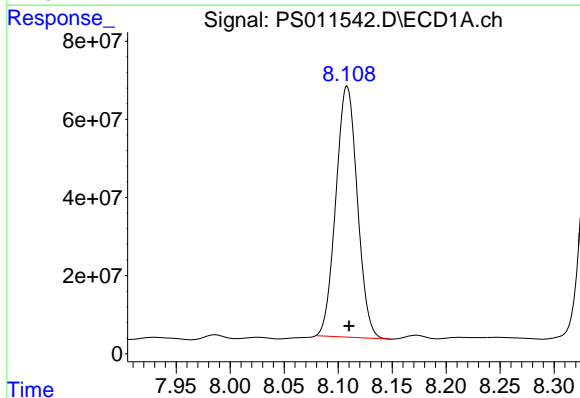
R.T.: 7.738 min  
 Delta R.T.: -0.008 min  
 Response: 407371518  
 Conc: 95.52 ug/ml

Instrument :  
 ECD\_S  
 ClientSampled :



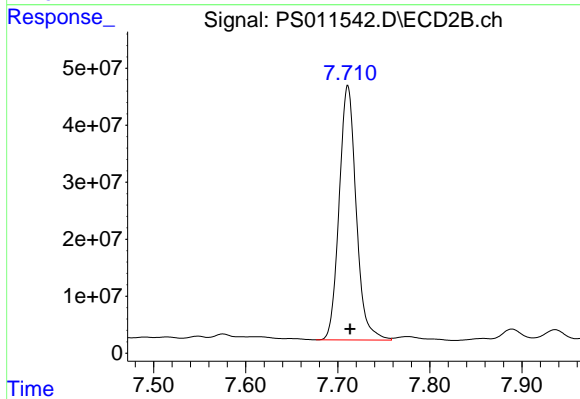
#7 MCPA

R.T.: 7.402 min  
 Delta R.T.: -0.008 min  
 Response: 327884058  
 Conc: 113.76 ug/ml



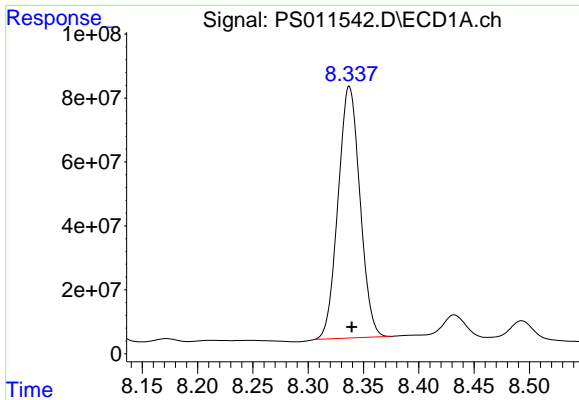
#8 DICHLORPROP

R.T.: 8.108 min  
 Delta R.T.: -0.002 min  
 Response: 888409548  
 Conc: 947.61 ng/ml



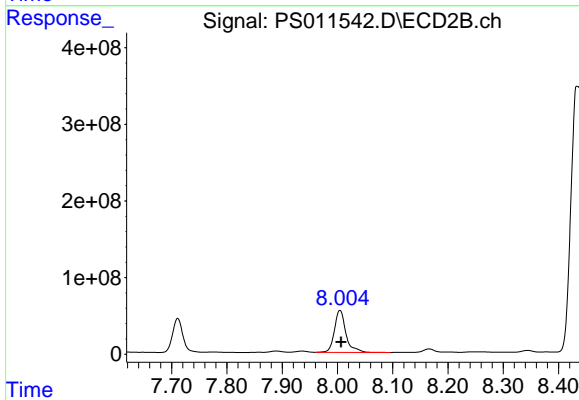
#8 DICHLORPROP

R.T.: 7.711 min  
 Delta R.T.: -0.002 min  
 Response: 572597136  
 Conc: 951.27 ng/ml

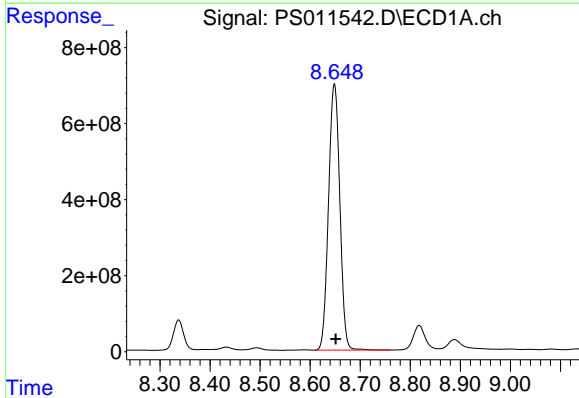


#9 2,4-D  
R.T.: 8.337 min  
Delta R.T.: -0.002 min  
Response: 1082642949  
Conc: 1138.32 ng/ml

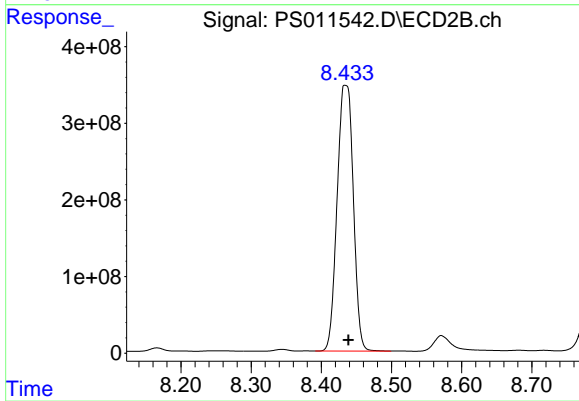
Instrument :  
ECD\_S  
ClientSampled :



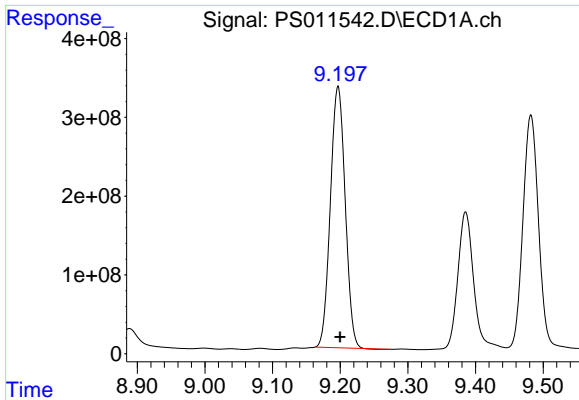
#9 2,4-D  
R.T.: 8.005 min  
Delta R.T.: -0.002 min  
Response: 791041315  
Conc: 1055.20 ng/ml



#10 Pentachlorophenol  
R.T.: 8.648 min  
Delta R.T.: -0.003 min  
Response: 10967612579  
Conc: 829.70 ng/ml



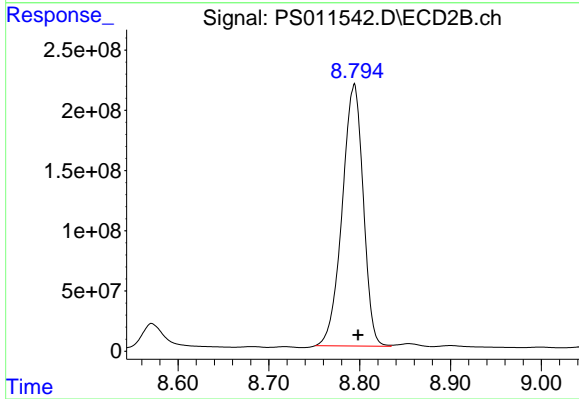
#10 Pentachlorophenol  
R.T.: 8.434 min  
Delta R.T.: -0.004 min  
Response: 5563475079  
Conc: 798.24 ng/ml



#11 2,4,5-TP (SILVEX)

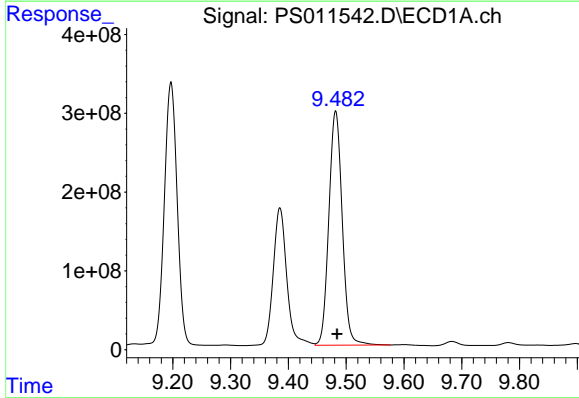
R.T.: 9.197 min  
 Delta R.T.: -0.003 min  
 Response: 5048173029  
 Conc: 953.25 ng/ml

Instrument :  
 ECD\_S  
 ClientSampleId :



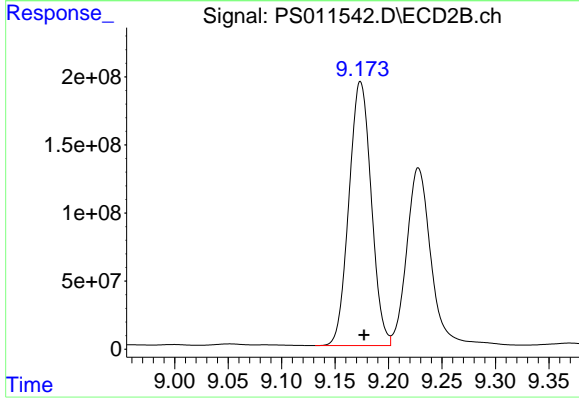
#11 2,4,5-TP (SILVEX)

R.T.: 8.794 min  
 Delta R.T.: -0.004 min  
 Response: 3498801163  
 Conc: 1144.42 ng/ml



#12 2,4,5-T

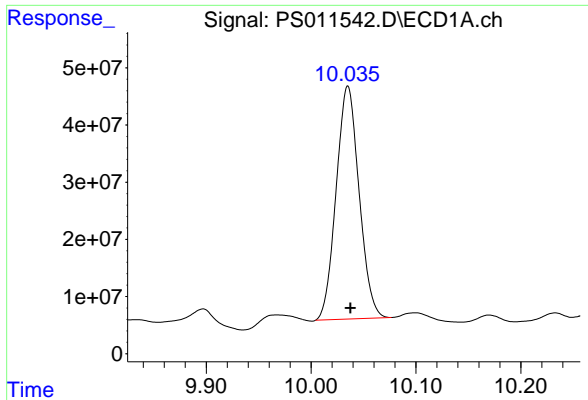
R.T.: 9.482 min  
 Delta R.T.: -0.003 min  
 Response: 4790037551  
 Conc: 949.30 ng/ml



#12 2,4,5-T

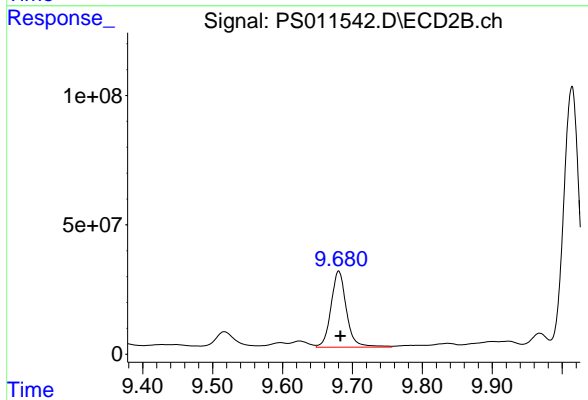
R.T.: 9.174 min  
 Delta R.T.: -0.004 min  
 Response: 2815261789  
 Conc: 928.20 ng/ml



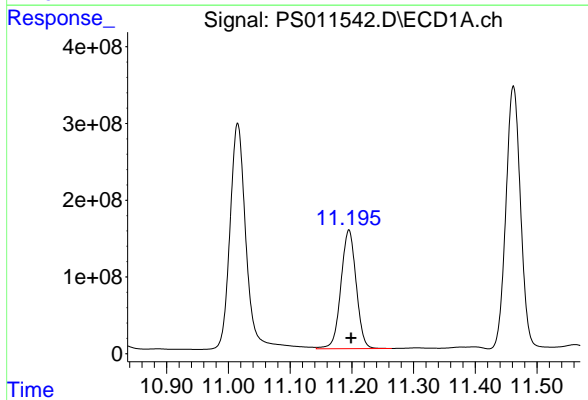


#13 2,4-DB  
 R.T.: 10.035 min  
 Delta R.T.: -0.003 min  
 Response: 618881107  
 Conc: 960.20 ng/ml

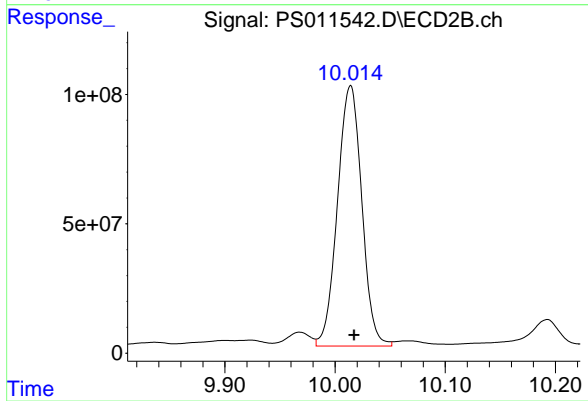
Instrument :  
 ECD\_S  
 ClientSampled :



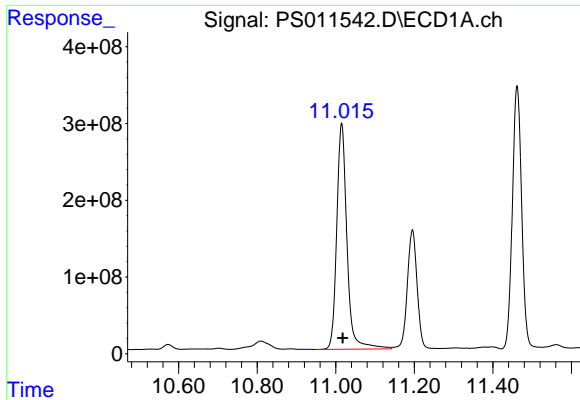
#13 2,4-DB  
 R.T.: 9.680 min  
 Delta R.T.: -0.003 min  
 Response: 451677568  
 Conc: 1056.56 ng/ml



#14 DINOSEB  
 R.T.: 11.195 min  
 Delta R.T.: -0.004 min  
 Response: 2655884371  
 Conc: 689.01 ng/ml

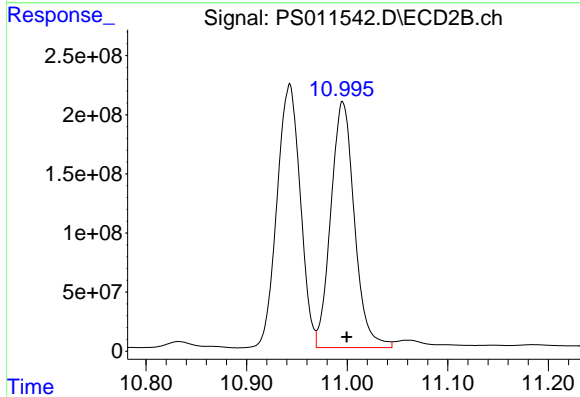


#14 DINOSEB  
 R.T.: 10.014 min  
 Delta R.T.: -0.003 min  
 Response: 1544486865  
 Conc: 720.07 ng/ml

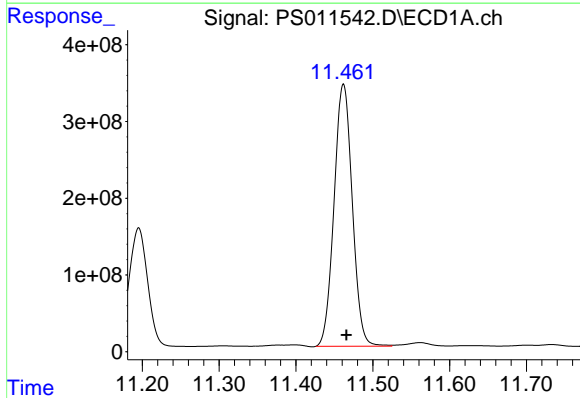


#15 Picloram  
 R.T.: 11.015 min  
 Delta R.T.: -0.003 min  
 Response: 5327403226  
 Conc: 844.30 ng/ml

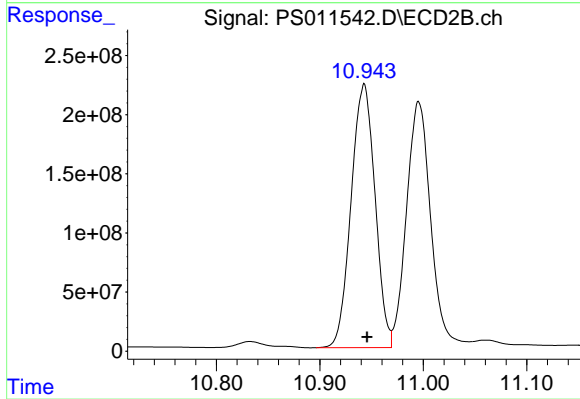
Instrument :  
 ECD\_S  
 ClientSampled :



#15 Picloram  
 R.T.: 10.996 min  
 Delta R.T.: -0.004 min  
 Response: 3393044248  
 Conc: 775.84 ng/ml



#16 DCPA  
 R.T.: 11.462 min  
 Delta R.T.: -0.004 min  
 Response: 5595063155  
 Conc: 868.40 ng/ml



#16 DCPA  
 R.T.: 10.943 min  
 Delta R.T.: -0.003 min  
 Response: 3582912083  
 Conc: 947.38 ng/ml