

Data Path : Z:\pestpcbsrv\HPCHEM1\ECD_S\Data\PS073120\
 Data File : PS011544.D
 Signal(s) : Signal #1: ECD1A.ch Signal #2: ECD2B.ch
 Acq On : 31 Jul 2020 13:43
 Operator : DD\AJ
 Sample : L3491-12
 Misc :
 ALS Vial : 12 Sample Multiplier: 1

Instrument :
 ECD_S
 ClientSampleId :

Integration File signal 1: autoint1.e
 Integration File signal 2: autoint2.e
 Quant Time: Jul 31 14:33:41 2020
 Quant Method : Z:\pestpcbsrv\HPCHEM1\ECD_S\Method\PS071320.M
 Quant Title : 8080.M
 QLast Update : Mon Jul 13 16:10:29 2020
 Response via : Initial Calibration
 Integrator: ChemStation

Volume Inj. : 2 µl
 Signal #1 Phase : Rtx-CLPesticides Signal #2 Phase: Rtx-CLPesticides2
 Signal #1 Info : 30M x 0.32mm x0.5 Signal #2 Info : 30M x 0.32mm x 0.25µm

	Compound	RT#1	RT#2	Resp#1	Resp#2	ng/ml	ng/ml

System Monitoring Compounds							
4) S	2,4-DCAA	7.225	6.918	344.4E6	188.3E6	354.965	334.489
Target Compounds							
1) T	Dalapon	2.996	2.582	72781461	-26470604	60.481	N.D. #
2) T	3,5-DICHL...	0.000	6.098	0	76012931	N.D.	90.508
3) T	4-Nitroph...	6.996	6.507	12626788	1387104	28.642	4.231 #
5) T	DICAMBA	7.427	7.093	13789024	2215250	3.558	<MDL #
6) T	MCP P	7.582	7.213	12280071	3280543	4.055	1.719 #
7) T	MCPA	7.773	7.408	26959905	33148989	6.322	11.501 #
8) T	DICHLORPROP	8.123	7.716	4818422	5284638	5.140	8.779 #
10) T	Pentachlo...	8.648	8.436	37977155	28648588	2.873	4.110 #
11) T	2,4,5-TP ...	0.000	8.767	0	13254629	N.D.	4.335
12) T	2,4,5-T	9.503	9.168	13443952	10806771	2.664	3.563 #
13) T	2,4-DB	10.044	9.700	16638922	41447102	25.816	96.953 #
14) T	DINOSEB	0.000	10.033	0	17067177	N.D.	7.957
15) T	Picloram	11.007	11.018	35422161	28045685	5.614	6.413
16) T	DCPA	11.528	10.935	27703036	9726982	4.300	2.572 #

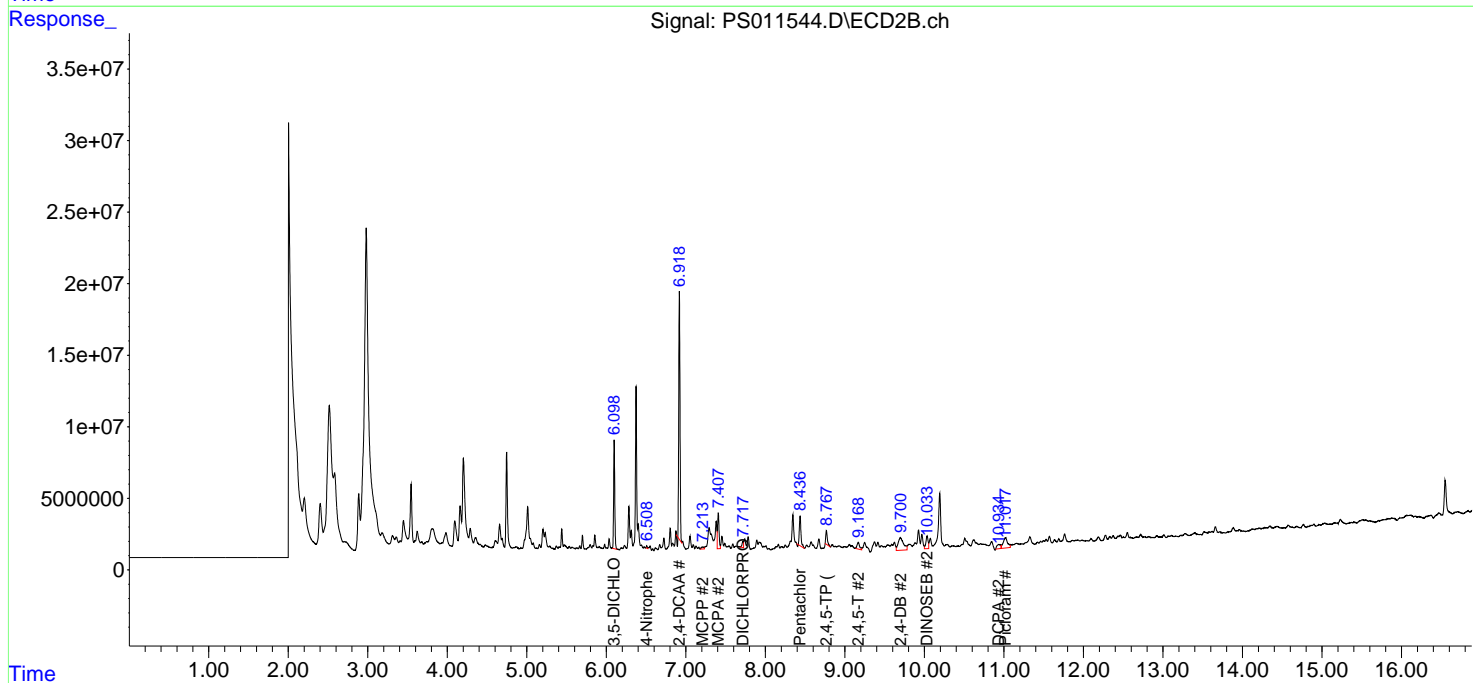
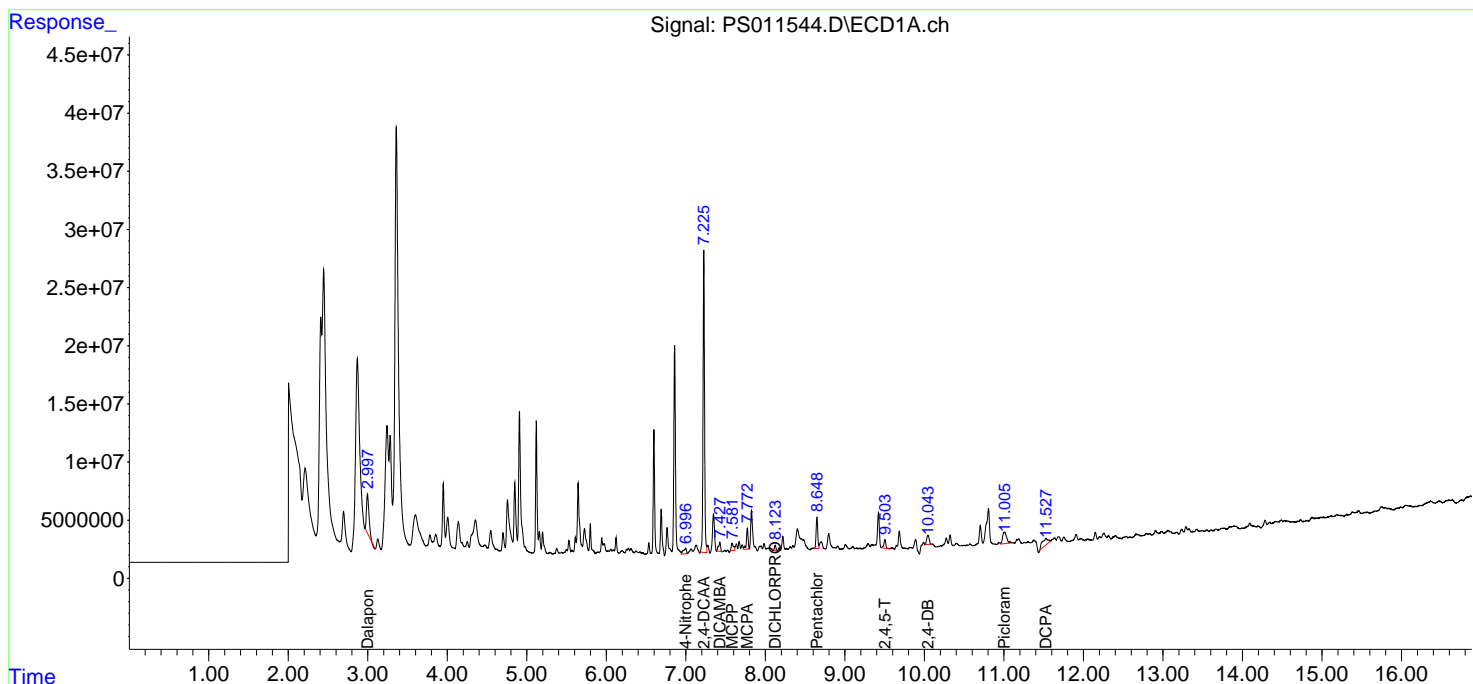
(f)=RT Delta > 1/2 Window (#)=Amounts differ by > 25% (m)=manual int.

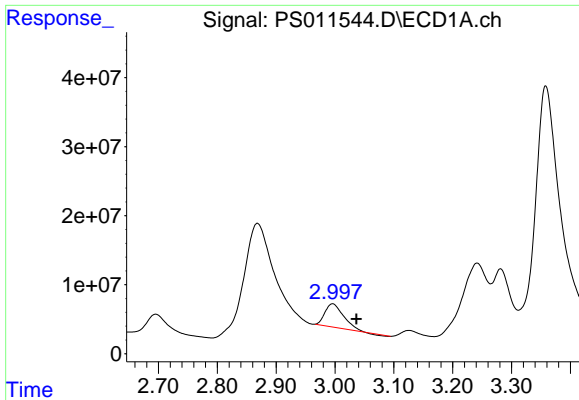
Data Path : Z:\pestpcbsrv\HPCHEM1\ECD_S\Data\PS073120\
 Data File : PS011544.D
 Signal(s) : Signal #1: ECD1A.ch Signal #2: ECD2B.ch
 Acq On : 31 Jul 2020 13:43
 Operator : DD\AJ
 Sample : L3491-12
 Misc :
 ALS Vial : 12 Sample Multiplier: 1

Instrument :
 ECD_S
 ClientSampled :

Integration File signal 1: autoint1.e
 Integration File signal 2: autoint2.e
 Quant Time: Jul 31 14:33:41 2020
 Quant Method : Z:\pestpcbsrv\HPCHEM1\ECD_S\Method\PS071320.M
 Quant Title : 8080.M
 QLast Update : Mon Jul 13 16:10:29 2020
 Response via : Initial Calibration
 Integrator: ChemStation

Volume Inj. : 2 µl
 Signal #1 Phase : Rtx-CLPesticides Signal #2 Phase: Rtx-CLPesticides2
 Signal #1 Info : 30M x 0.32mm x0.5 Signal #2 Info : 30M x 0.32mm x 0.25µm

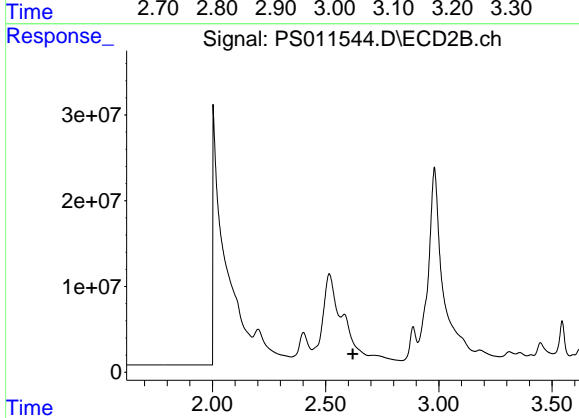




#1 Dalapon

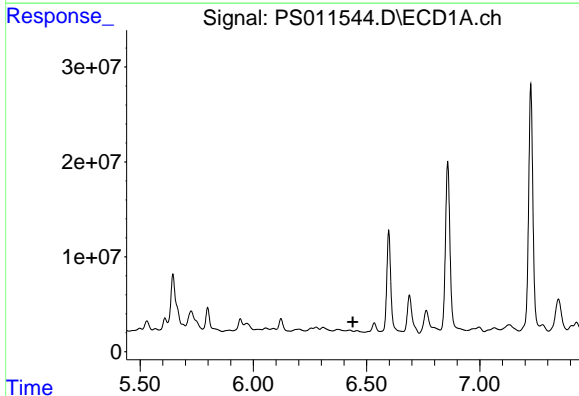
R.T.: 2.996 min
 Delta R.T.: -0.040 min
 Response: 72781461
 Conc: 60.48 ng/ml

Instrument :
 ECD_S
 ClientSampleId :



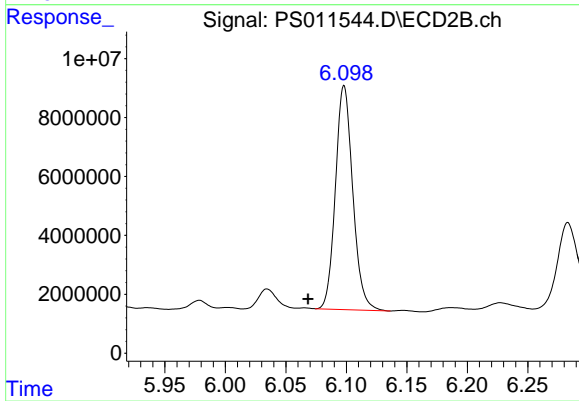
#1 Dalapon

R.T.: 2.582 min
 Delta R.T.: -0.038 min
 Response: -26470604
 Conc: N.D.



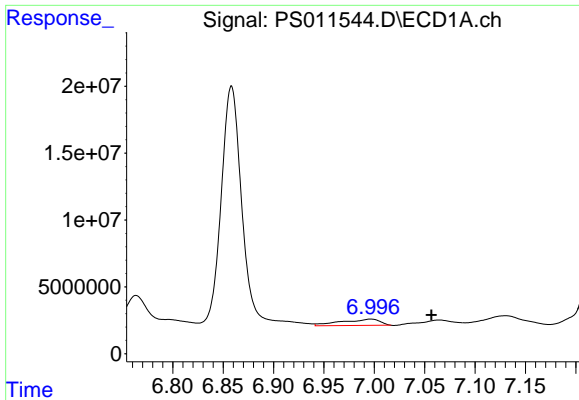
#2 3,5-DICHLOROBENZOIC ACID

R.T.: 0.000 min
 Exp R.T. : 6.439 min
 Response: 0
 Conc: N.D.



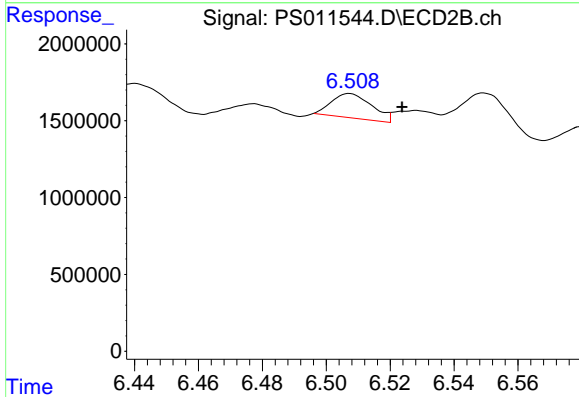
#2 3,5-DICHLOROBENZOIC ACID

R.T.: 6.098 min
 Delta R.T.: 0.030 min
 Response: 76012931
 Conc: 90.51 ng/ml

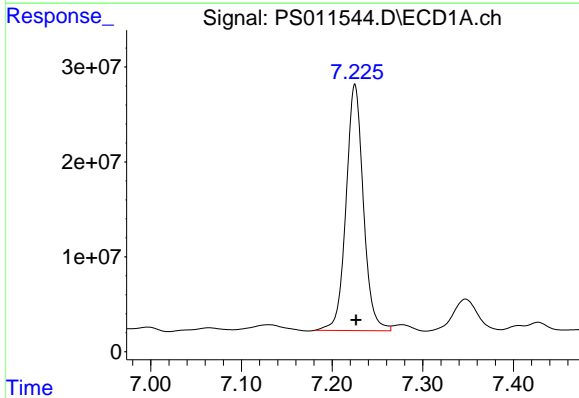


#3 4-Nitrophenol
 R.T.: 6.996 min
 Delta R.T.: -0.060 min
 Response: 12626788
 Conc: 28.64 ng/ml

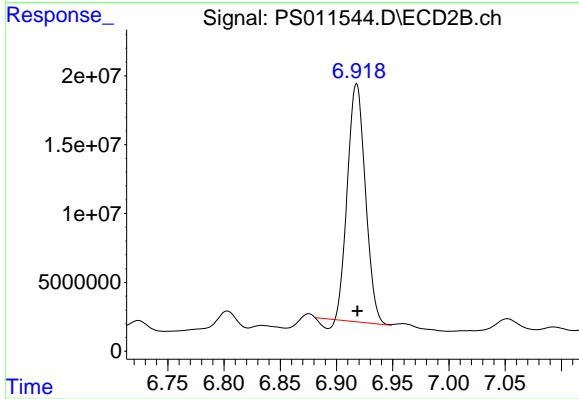
Instrument :
 ECD_S
 ClientSampleId :



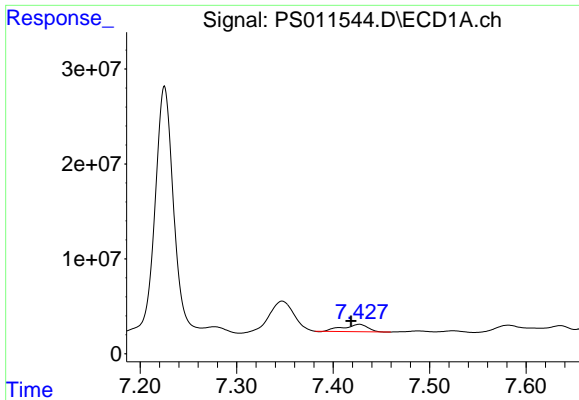
#3 4-Nitrophenol
 R.T.: 6.507 min
 Delta R.T.: -0.016 min
 Response: 1387104
 Conc: 4.23 ng/ml



#4 2,4-DCAA
 R.T.: 7.225 min
 Delta R.T.: -0.001 min
 Response: 344436202
 Conc: 354.97 ng/ml

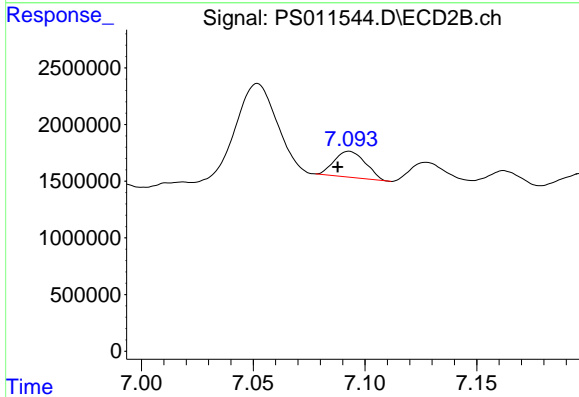


#4 2,4-DCAA
 R.T.: 6.918 min
 Delta R.T.: 0.000 min
 Response: 188324688
 Conc: 334.49 ng/ml

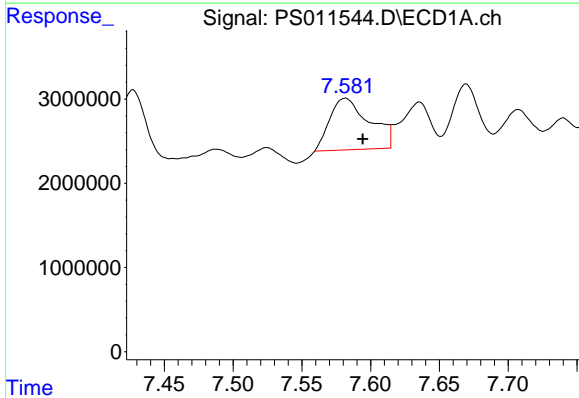


#5 DICAMBA
 R.T.: 7.427 min
 Delta R.T.: 0.008 min
 Response: 13789024
 Conc: 3.56 ng/ml

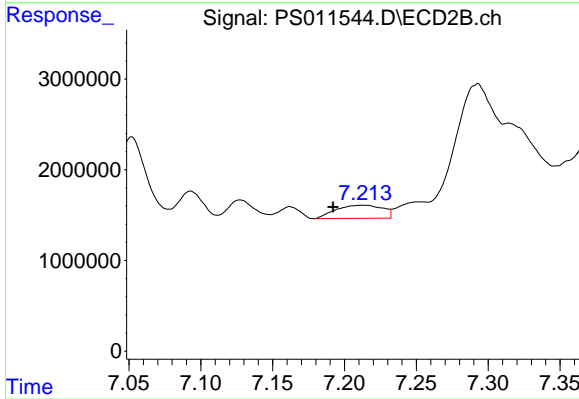
Instrument :
 ECD_S
 ClientSampleId :



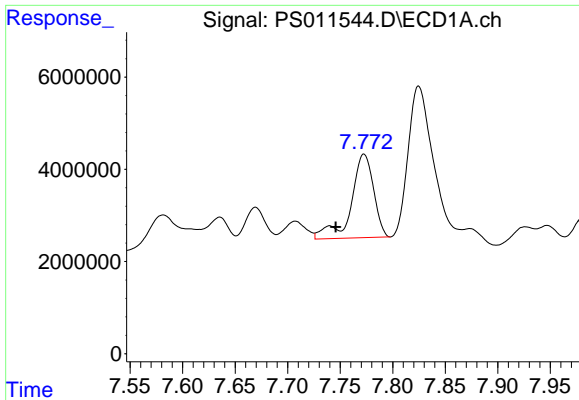
#5 DICAMBA
 R.T.: 7.093 min
 Delta R.T.: 0.005 min
 Response: 2215250
 Conc: N.D.



#6 MCP
 R.T.: 7.582 min
 Delta R.T.: -0.013 min
 Response: 12280071
 Conc: 4.06 ug/ml



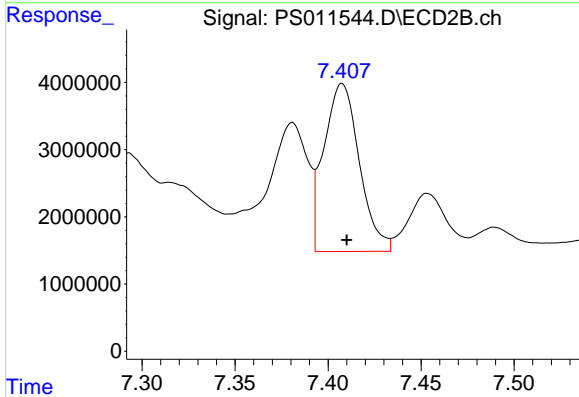
#6 MCP
 R.T.: 7.213 min
 Delta R.T.: 0.020 min
 Response: 3280543
 Conc: 1.72 ug/ml



#7 MCPA

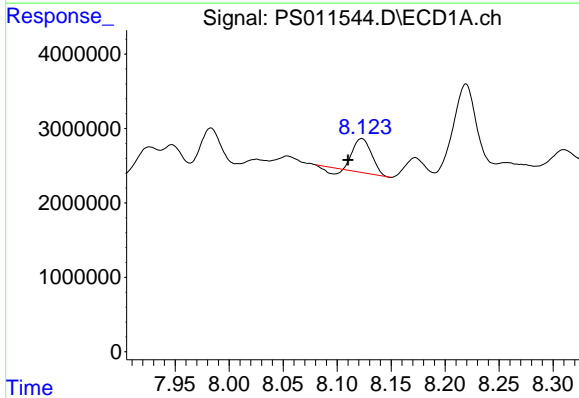
R.T.: 7.773 min
 Delta R.T.: 0.027 min
 Response: 26959905
 Conc: 6.32 ug/ml

Instrument :
 ECD_S
 ClientSampled :



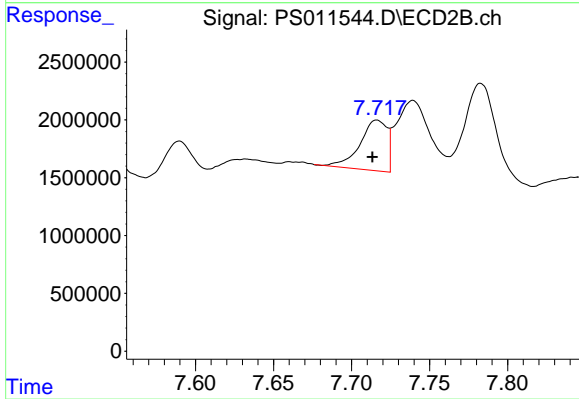
#7 MCPA

R.T.: 7.408 min
 Delta R.T.: -0.002 min
 Response: 33148989
 Conc: 11.50 ug/ml



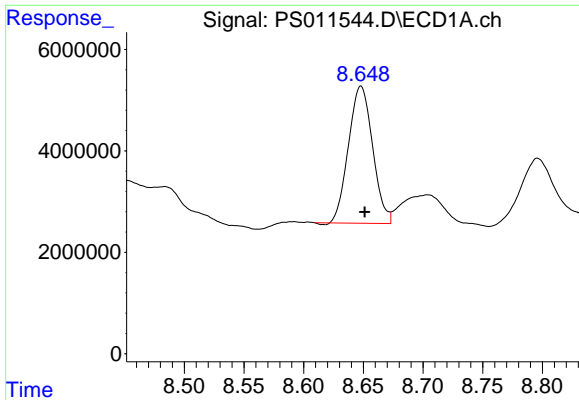
#8 DICHLORPROP

R.T.: 8.123 min
 Delta R.T.: 0.013 min
 Response: 4818422
 Conc: 5.14 ng/ml



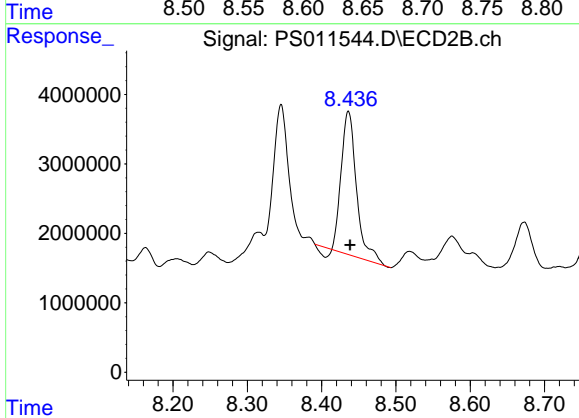
#8 DICHLORPROP

R.T.: 7.716 min
 Delta R.T.: 0.003 min
 Response: 5284638
 Conc: 8.78 ng/ml

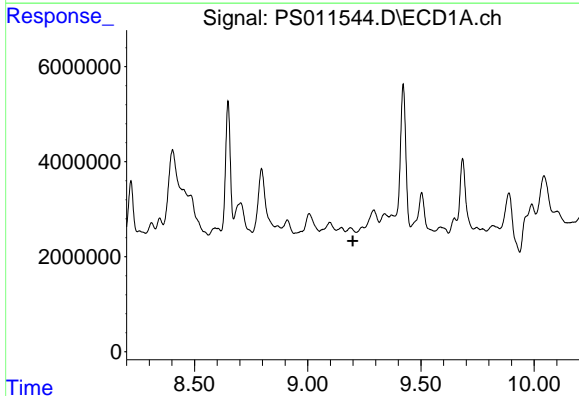


#10 Pentachlorophenol
 R.T.: 8.648 min
 Delta R.T.: -0.003 min
 Response: 37977155
 Conc: 2.87 ng/ml

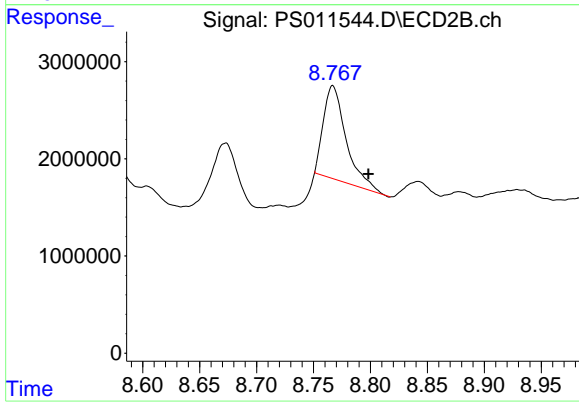
Instrument :
 ECD_S
 ClientSampled :



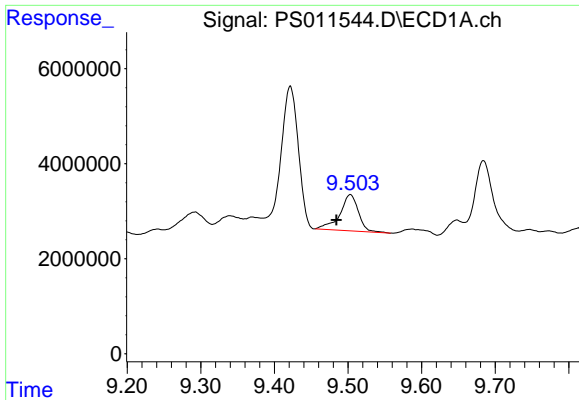
#10 Pentachlorophenol
 R.T.: 8.436 min
 Delta R.T.: -0.002 min
 Response: 28648588
 Conc: 4.11 ng/ml



#11 2,4,5-TP (SILVEX)
 R.T.: 0.000 min
 Exp R.T. : 9.200 min
 Response: 0
 Conc: N.D.

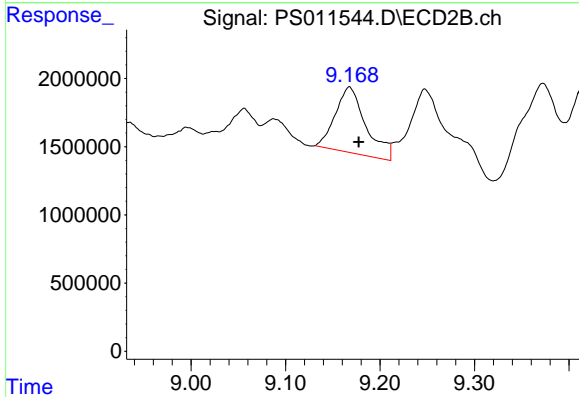


#11 2,4,5-TP (SILVEX)
 R.T.: 8.767 min
 Delta R.T.: -0.031 min
 Response: 13254629
 Conc: 4.34 ng/ml

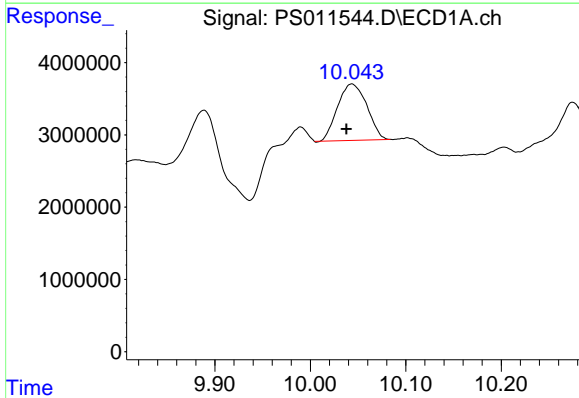


#12 2,4,5-T
 R.T.: 9.503 min
 Delta R.T.: 0.019 min
 Response: 13443952
 Conc: 2.66 ng/ml

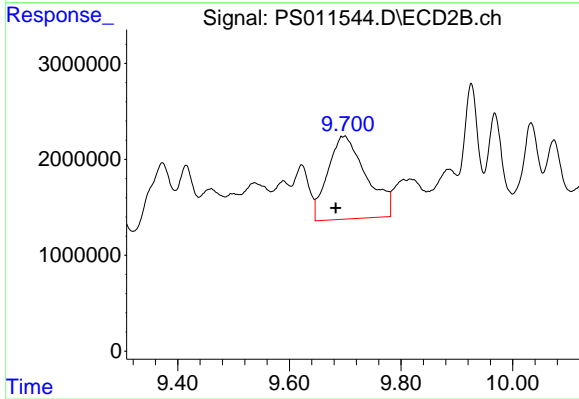
Instrument :
 ECD_S
 ClientSampleId :



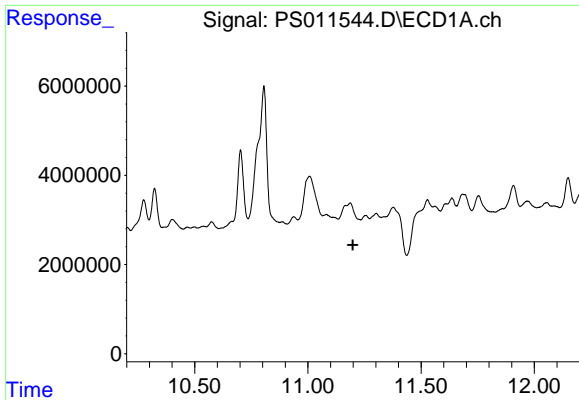
#12 2,4,5-T
 R.T.: 9.168 min
 Delta R.T.: -0.010 min
 Response: 10806771
 Conc: 3.56 ng/ml



#13 2,4-DB
 R.T.: 10.044 min
 Delta R.T.: 0.006 min
 Response: 16638922
 Conc: 25.82 ng/ml



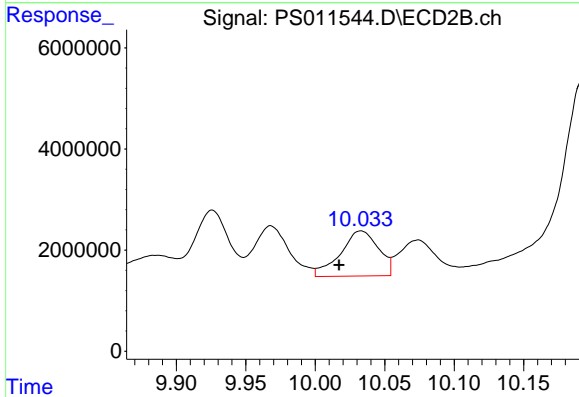
#13 2,4-DB
 R.T.: 9.700 min
 Delta R.T.: 0.017 min
 Response: 41447102
 Conc: 96.95 ng/ml



#14 DINOSEB

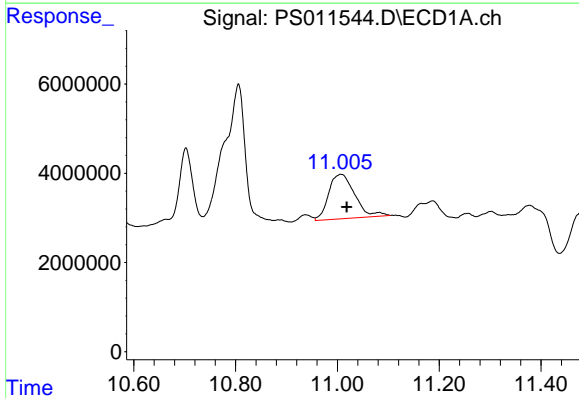
R.T.: 0.000 min
 Exp R.T.: 11.199 min
 Response: 0
 Conc: N.D.

Instrument :
 ECD_S
 ClientSampled :



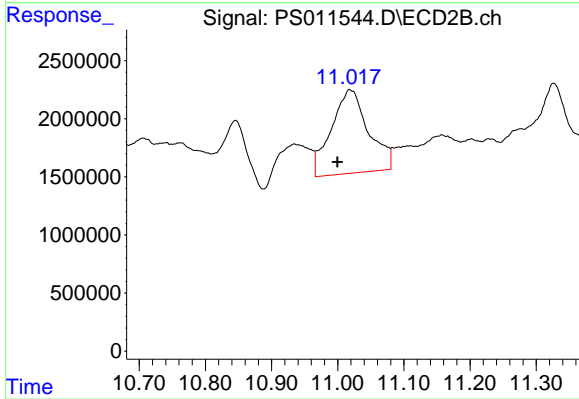
#14 DINOSEB

R.T.: 10.033 min
 Delta R.T.: 0.016 min
 Response: 17067177
 Conc: 7.96 ng/ml



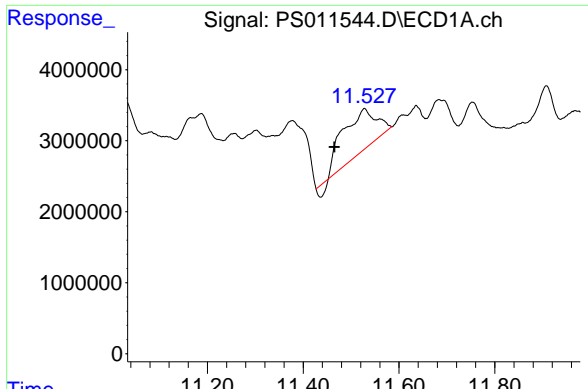
#15 Picloram

R.T.: 11.007 min
 Delta R.T.: -0.011 min
 Response: 35422161
 Conc: 5.61 ng/ml



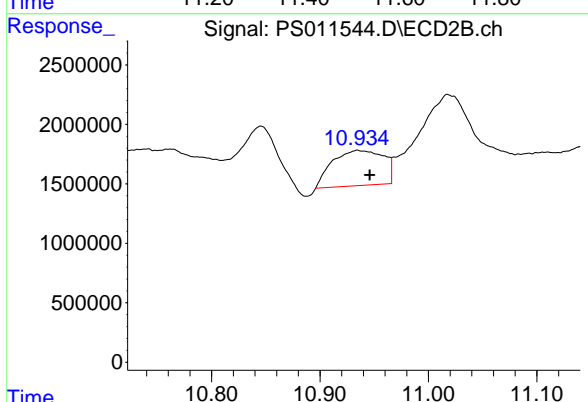
#15 Picloram

R.T.: 11.018 min
 Delta R.T.: 0.018 min
 Response: 28045685
 Conc: 6.41 ng/ml



#16 DCPA
 R.T.: 11.528 min
 Delta R.T.: 0.062 min
 Response: 27703036
 Conc: 4.30 ng/ml

Instrument :
 ECD_S
 ClientSampleId :



#16 DCPA
 R.T.: 10.935 min
 Delta R.T.: -0.011 min
 Response: 9726982
 Conc: 2.57 ng/ml