

Data Path : Z:\pestpcbsrv\HPCHEM1\ECD_S\Data\PS073120\
 Data File : PS011549.D
 Signal(s) : Signal #1: ECD1A.ch Signal #2: ECD2B.ch
 Acq On : 31 Jul 2020 15:38
 Operator : DD\AJ
 Sample : HSTDCCC750
 Misc :
 ALS Vial : 3 Sample Multiplier: 1

Instrument :
 ECD_S
 ClientSampleId :

Integration File signal 1: autoint1.e
 Integration File signal 2: autoint2.e
 Quant Time: Jul 31 18:46:27 2020
 Quant Method : Z:\pestpcbsrv\HPCHEM1\ECD_S\Method\PS071320.M
 Quant Title : 8080.M
 QLast Update : Mon Jul 13 16:10:29 2020
 Response via : Initial Calibration
 Integrator: ChemStation

Volume Inj. : 2 µl
 Signal #1 Phase : Rtx-CLPesticides Signal #2 Phase: Rtx-CLPesticides2
 Signal #1 Info : 30M x 0.32mm x0.5 Signal #2 Info : 30M x 0.32mm x 0.25µm

	Compound	RT#1	RT#2	Resp#1	Resp#2	ng/ml	ng/ml

System Monitoring Compounds							
4) S	2,4-DCAA	7.225	6.917	768.4E6	433.9E6	791.867	770.603
Target Compounds							
1) T	Dalapon	3.037	2.624	826.7E6	489.3E6	686.999	637.421
2) T	3,5-DICHL...	6.438	6.068	999.4E6	609.3E6	746.822	725.545
3) T	4-Nitroph...	7.056	6.524	327.1E6	235.4E6	741.929	718.086
5) T	DICAMBA	7.416	7.086	2921.4E6	1690.3E6	753.750	738.141
6) T	MCP P	7.586	7.183	223.7E6	141.7E6	73.882	74.263
7) T	MCPA	7.735	7.399	317.9E6	211.3E6	74.540	73.324
8) T	DICHLORPROP	8.108	7.711	684.8E6	437.1E6	730.403	726.197
9) T	2,4-D	8.338	8.006	696.3E6	550.1E6	732.150	733.800
10) T	Pentachlo...	8.649	8.436	9999.0E6	5269.6E6	756.429	756.080
11) T	2,4,5-TP ...	9.198	8.796	3924.6E6	2269.7E6	741.087	742.389
12) T	2,4,5-T	9.483	9.176	3749.8E6	2242.6E6	743.132	739.395
13) T	2,4-DB	10.036	9.682	454.7E6	309.4E6	705.473	723.822
14) T	DINOSEB	11.195	10.014	2899.8E6	1637.9E6	752.292	763.608
15) T	Picloram	11.019	11.001	3670.3E6	2533.3E6	581.683	579.264
16) T	DCPA	11.460	10.943	4681.5E6	2838.0E6	726.611	750.412

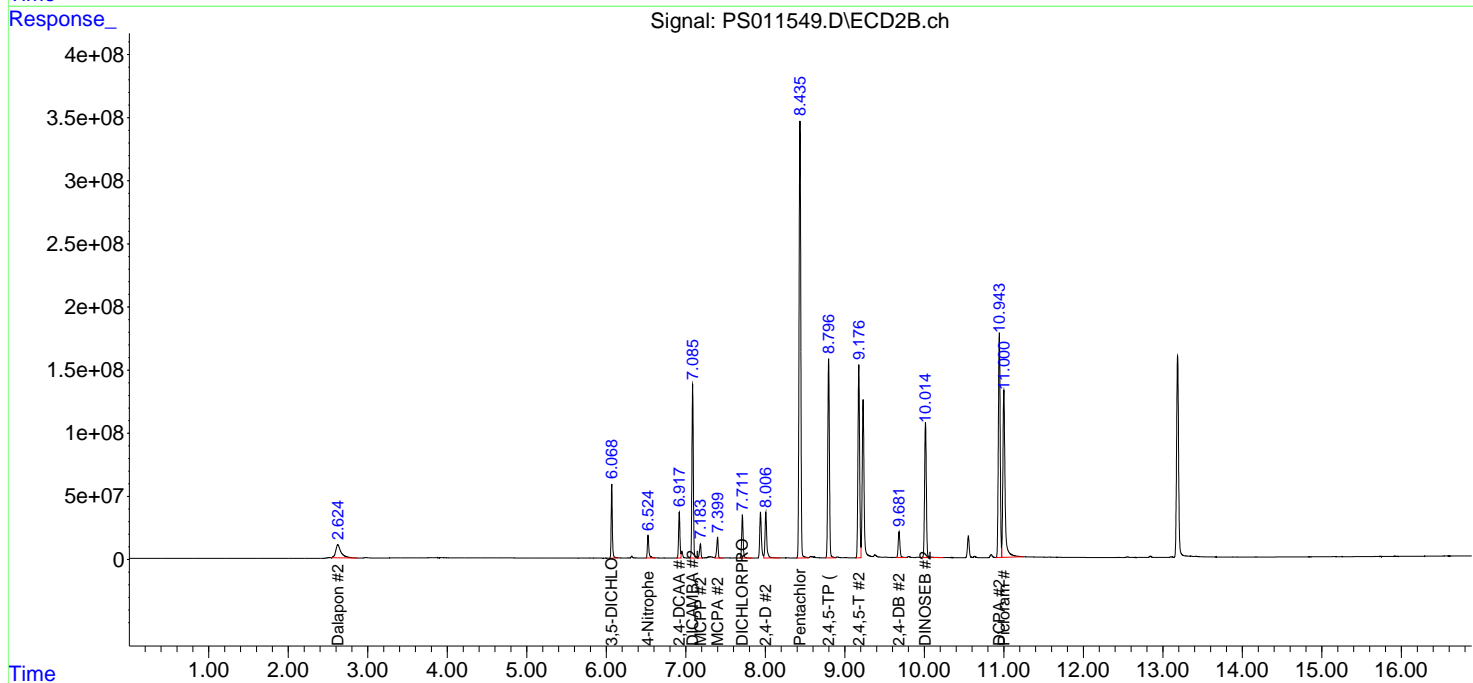
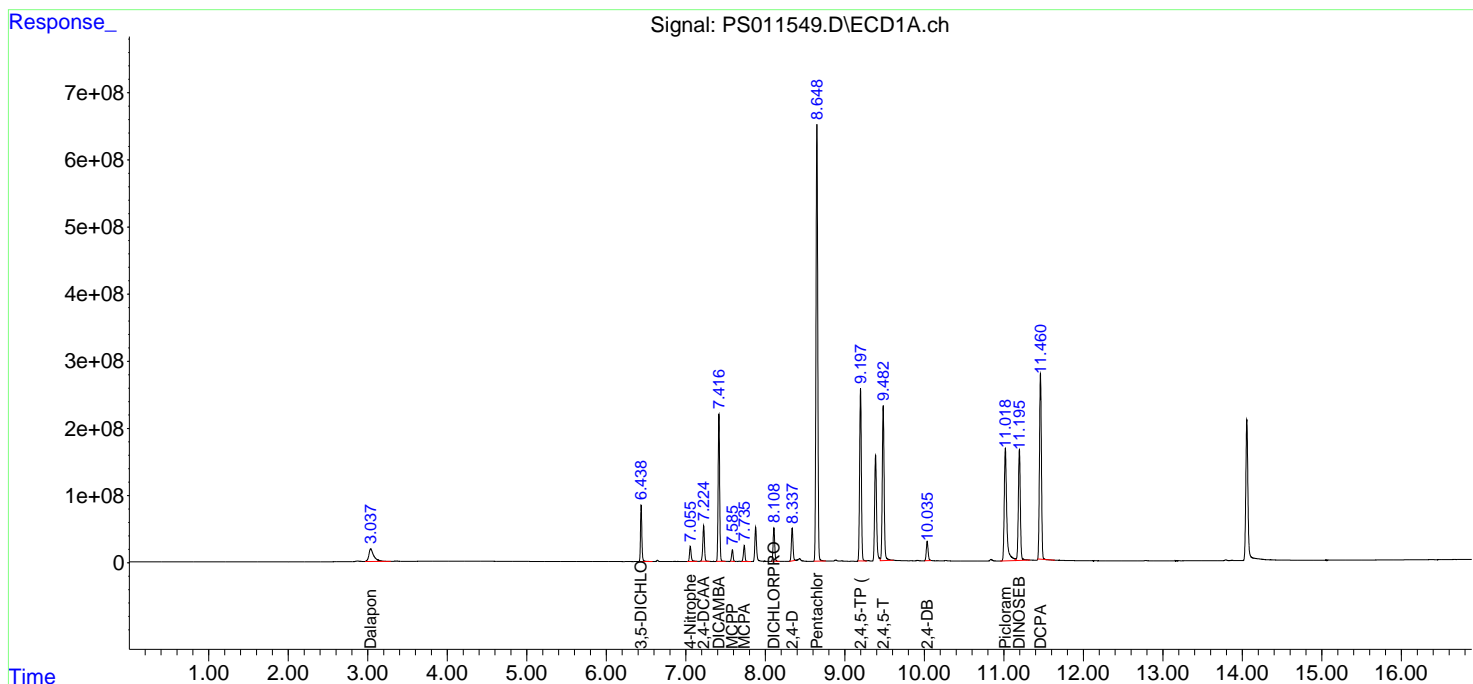
(f)=RT Delta > 1/2 Window (#)=Amounts differ by > 25% (m)=manual int.

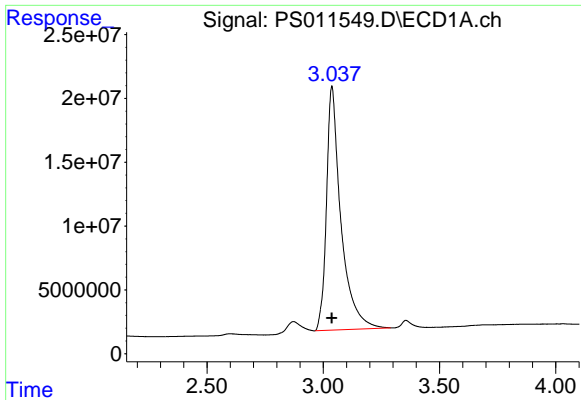
Data Path : Z:\pestpcbsrv\HPCHEM1\ECD_S\Data\PS073120\
 Data File : PS011549.D
 Signal(s) : Signal #1: ECD1A.ch Signal #2: ECD2B.ch
 Acq On : 31 Jul 2020 15:38
 Operator : DD\AJ
 Sample : HSTDCCC750
 Misc :
 ALS Vial : 3 Sample Multiplier: 1

Instrument :
 ECD_S
 ClientSampled :

Integration File signal 1: autoint1.e
 Integration File signal 2: autoint2.e
 Quant Time: Jul 31 18:46:27 2020
 Quant Method : Z:\pestpcbsrv\HPCHEM1\ECD_S\Method\PS071320.M
 Quant Title : 8080.M
 QLast Update : Mon Jul 13 16:10:29 2020
 Response via : Initial Calibration
 Integrator: ChemStation

Volume Inj. : 2 µl
 Signal #1 Phase : Rtx-CLPesticides Signal #2 Phase: Rtx-CLPesticides2
 Signal #1 Info : 30M x 0.32mm x0.5 Signal #2 Info : 30M x 0.32mm x 0.25µm

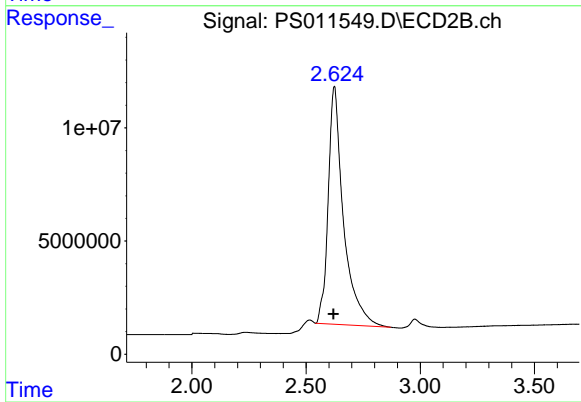




#1 Dalapon

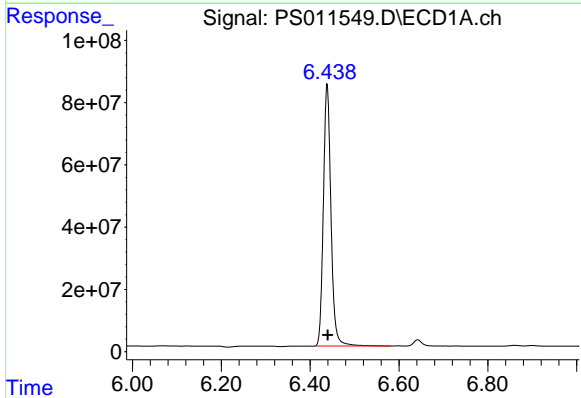
R.T.: 3.037 min
 Delta R.T.: 0.001 min
 Response: 826712983
 Conc: 687.00 ng/ml

Instrument :
 ECD_S
 ClientSampleId :



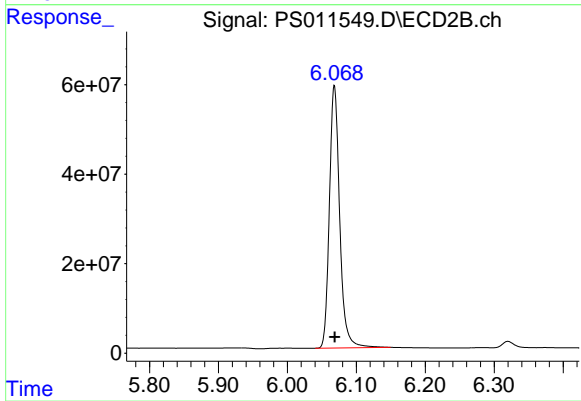
#1 Dalapon

R.T.: 2.624 min
 Delta R.T.: 0.004 min
 Response: 489330328
 Conc: 637.42 ng/ml



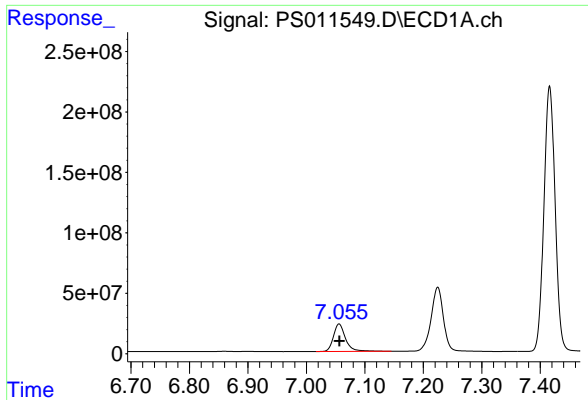
#2 3,5-DICHLOROBENZOIC ACID

R.T.: 6.438 min
 Delta R.T.: -0.001 min
 Response: 999365686
 Conc: 746.82 ng/ml



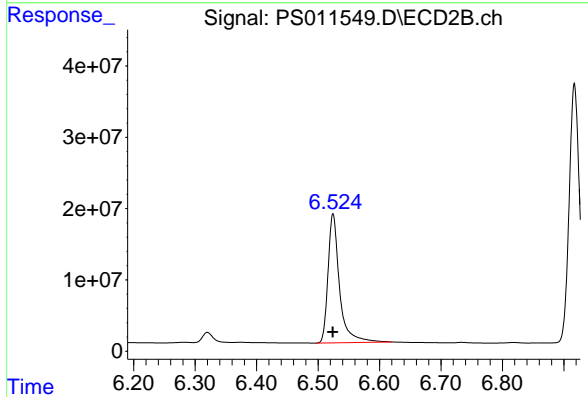
#2 3,5-DICHLOROBENZOIC ACID

R.T.: 6.068 min
 Delta R.T.: 0.000 min
 Response: 609344180
 Conc: 725.54 ng/ml

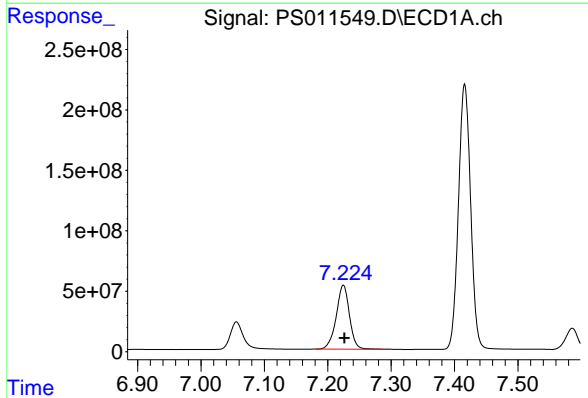


#3 4-Nitrophenol
R.T.: 7.056 min
Delta R.T.: 0.000 min
Response: 327074695
Conc: 741.93 ng/ml

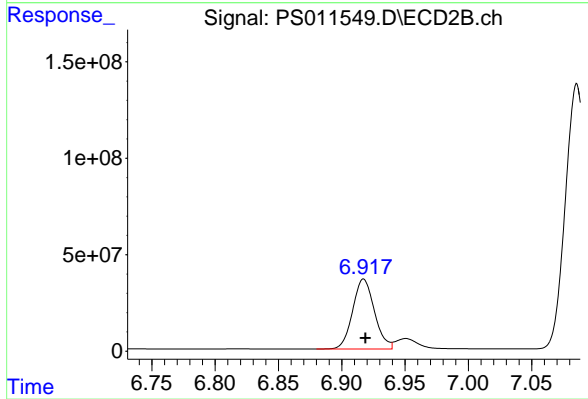
Instrument :
ECD_S
ClientSampleId :



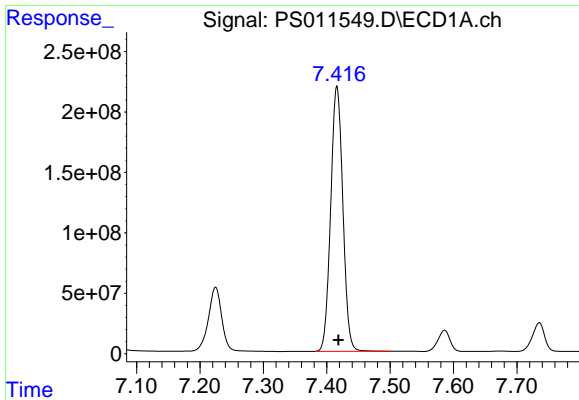
#3 4-Nitrophenol
R.T.: 6.524 min
Delta R.T.: 0.000 min
Response: 235445154
Conc: 718.09 ng/ml



#4 2,4-DCAA
R.T.: 7.225 min
Delta R.T.: -0.002 min
Response: 768378989
Conc: 791.87 ng/ml



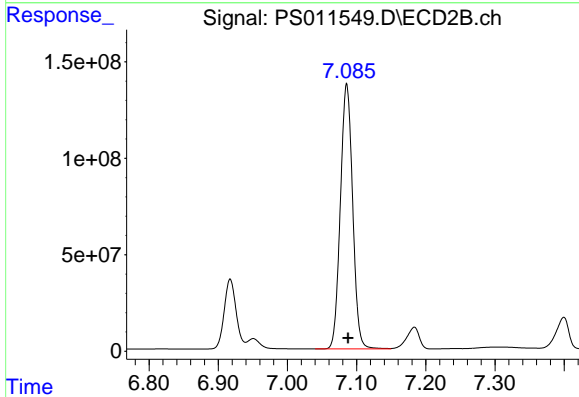
#4 2,4-DCAA
R.T.: 6.917 min
Delta R.T.: -0.001 min
Response: 433866962
Conc: 770.60 ng/ml



#5 DICAMBA

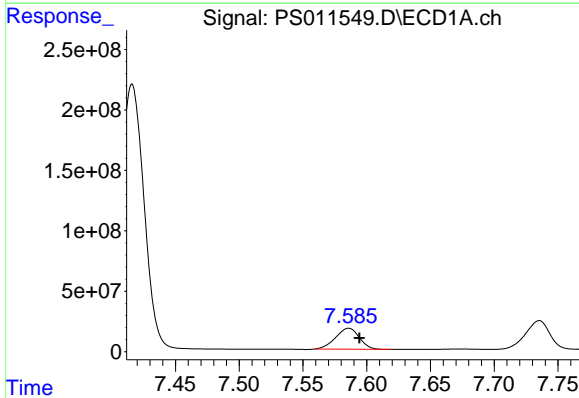
R.T.: 7.416 min
 Delta R.T.: -0.003 min
 Response: 2921431765
 Conc: 753.75 ng/ml

Instrument :
 ECD_S
 ClientSampled :



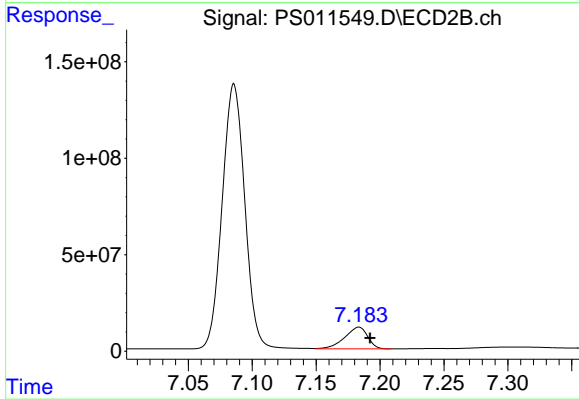
#5 DICAMBA

R.T.: 7.086 min
 Delta R.T.: -0.002 min
 Response: 1690315805
 Conc: 738.14 ng/ml



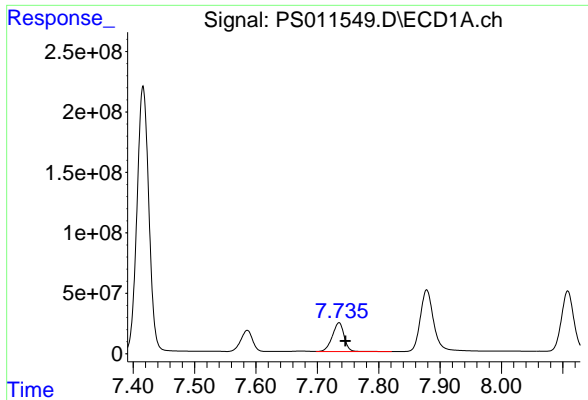
#6 MCP

R.T.: 7.586 min
 Delta R.T.: -0.008 min
 Response: 223726401
 Conc: 73.88 ug/ml



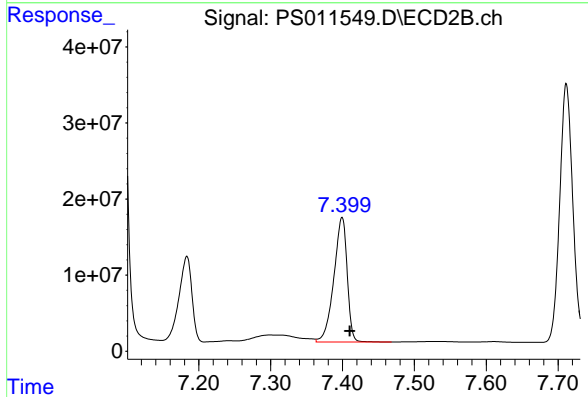
#6 MCP

R.T.: 7.183 min
 Delta R.T.: -0.009 min
 Response: 141700045
 Conc: 74.26 ug/ml

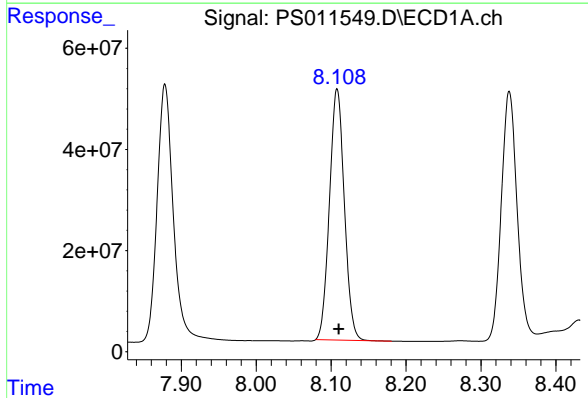


#7 MCPA
 R.T.: 7.735 min
 Delta R.T.: -0.010 min
 Response: 317889890
 Conc: 74.54 ug/ml

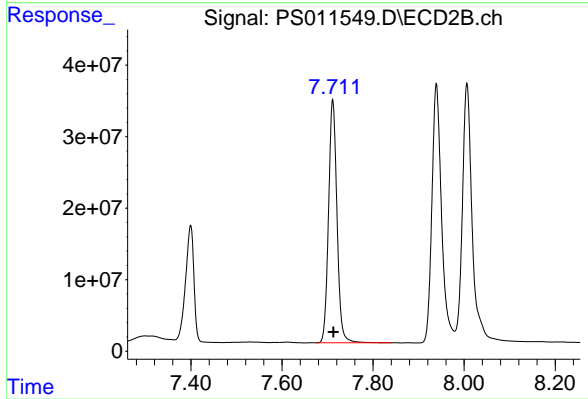
Instrument :
 ECD_S
 ClientSampleId :



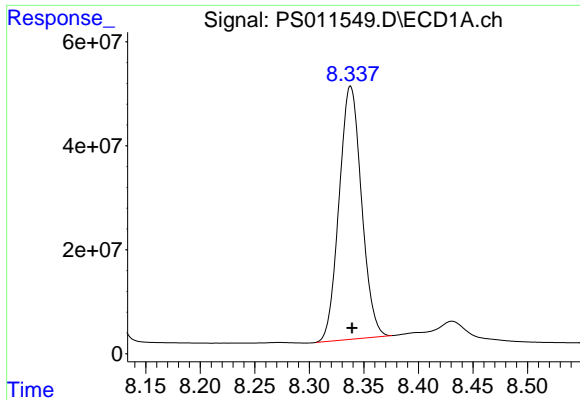
#7 MCPA
 R.T.: 7.399 min
 Delta R.T.: -0.011 min
 Response: 211343863
 Conc: 73.32 ug/ml



#8 DICHLORPROP
 R.T.: 8.108 min
 Delta R.T.: -0.002 min
 Response: 684771465
 Conc: 730.40 ng/ml



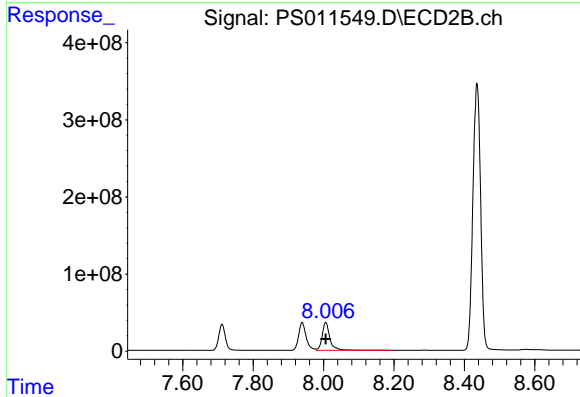
#8 DICHLORPROP
 R.T.: 7.711 min
 Delta R.T.: -0.002 min
 Response: 437119073
 Conc: 726.20 ng/ml



#9 2,4-D

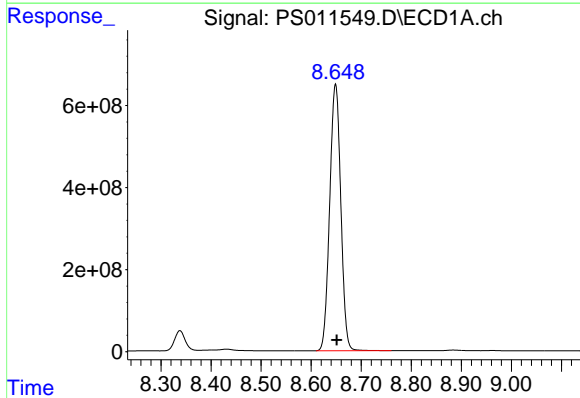
R.T.: 8.338 min
 Delta R.T.: -0.001 min
 Response: 696338568
 Conc: 732.15 ng/ml

Instrument :
 ECD_S
 ClientSampleId :



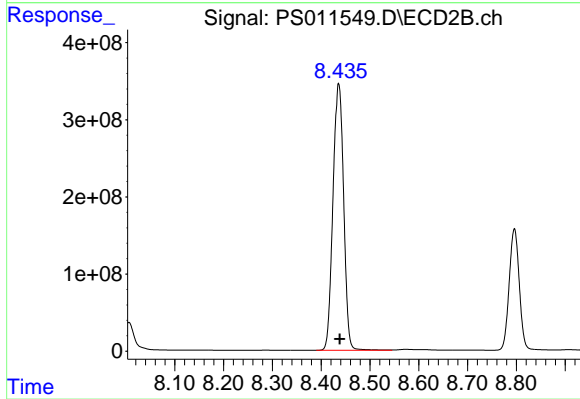
#9 2,4-D

R.T.: 8.006 min
 Delta R.T.: 0.000 min
 Response: 550102778
 Conc: 733.80 ng/ml



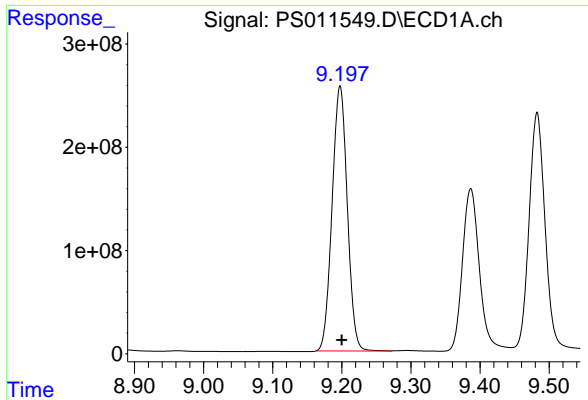
#10 Pentachlorophenol

R.T.: 8.649 min
 Delta R.T.: -0.002 min
 Response: 9999025310
 Conc: 756.43 ng/ml



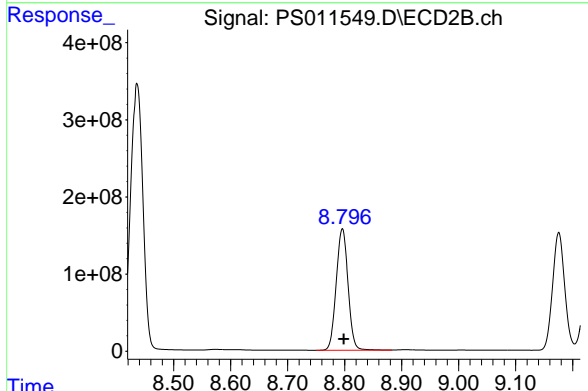
#10 Pentachlorophenol

R.T.: 8.436 min
 Delta R.T.: -0.002 min
 Response: 5269626192
 Conc: 756.08 ng/ml

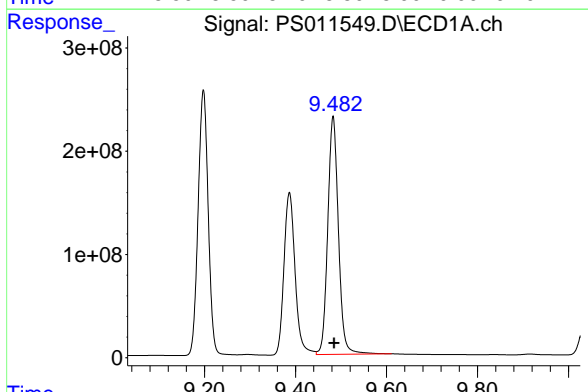


#11 2,4,5-TP (SILVEX)
 R.T.: 9.198 min
 Delta R.T.: -0.002 min
 Response: 3924614111
 Conc: 741.09 ng/ml

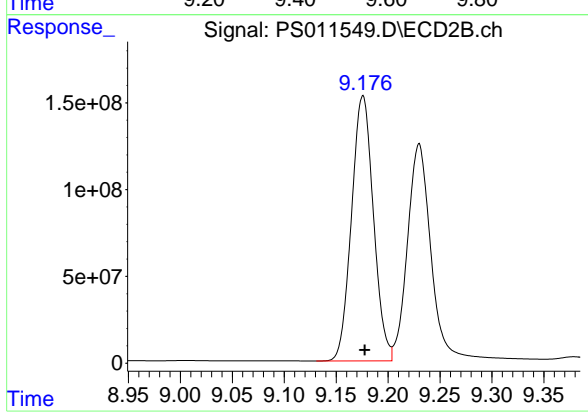
Instrument :
 ECD_S
 ClientSampleId :



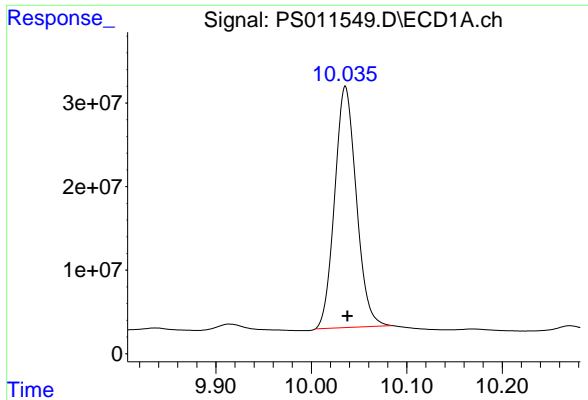
#11 2,4,5-TP (SILVEX)
 R.T.: 8.796 min
 Delta R.T.: -0.002 min
 Response: 2269682925
 Conc: 742.39 ng/ml



#12 2,4,5-T
 R.T.: 9.483 min
 Delta R.T.: -0.002 min
 Response: 3749754166
 Conc: 743.13 ng/ml



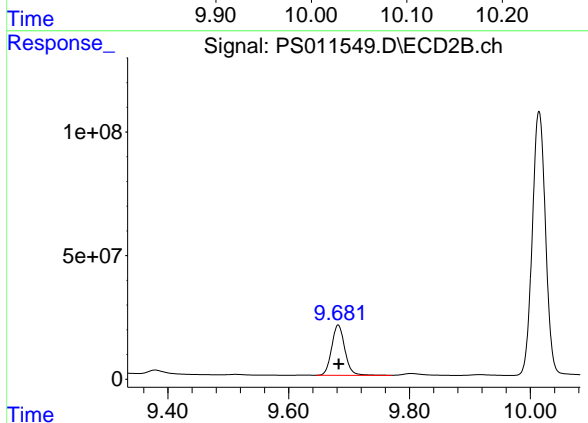
#12 2,4,5-T
 R.T.: 9.176 min
 Delta R.T.: -0.002 min
 Response: 2242597185
 Conc: 739.39 ng/ml



#13 2,4-DB

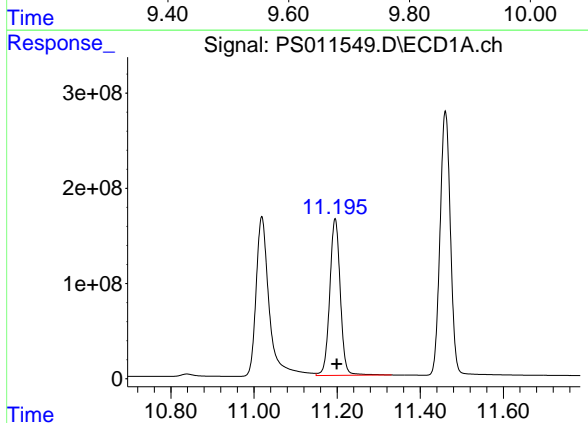
R.T.: 10.036 min
Delta R.T.: -0.002 min
Response: 454698724
Conc: 705.47 ng/ml

Instrument :
ECD_S
ClientSampleId :



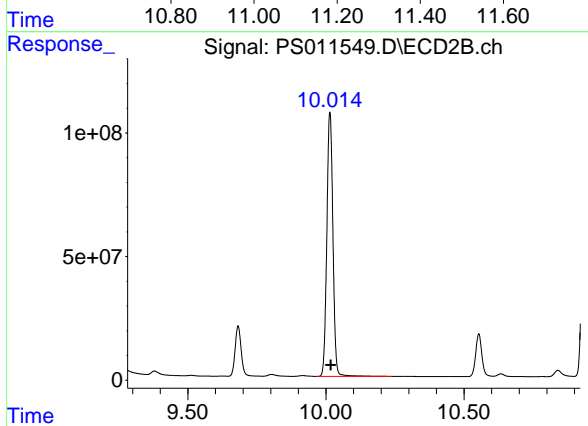
#13 2,4-DB

R.T.: 9.682 min
Delta R.T.: -0.001 min
Response: 309432331
Conc: 723.82 ng/ml



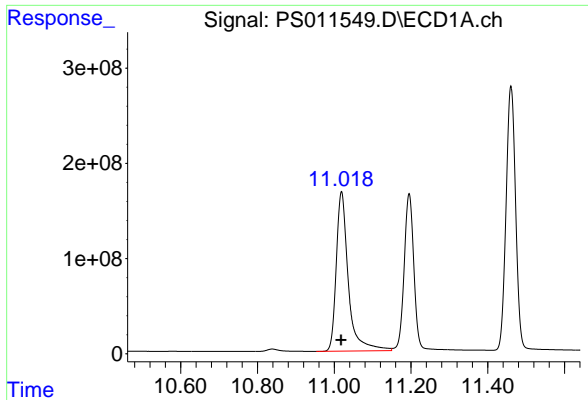
#14 DINOSEB

R.T.: 11.195 min
Delta R.T.: -0.004 min
Response: 2899831944
Conc: 752.29 ng/ml



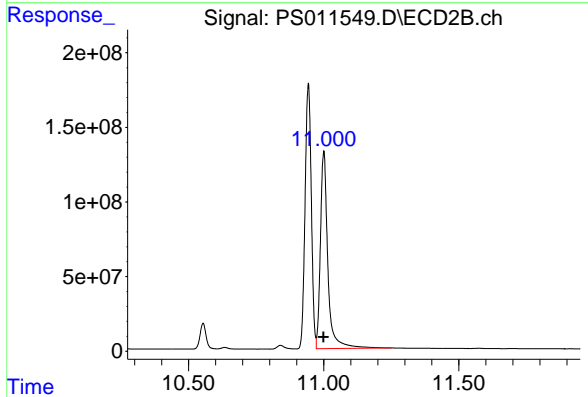
#14 DINOSEB

R.T.: 10.014 min
Delta R.T.: -0.003 min
Response: 1637882095
Conc: 763.61 ng/ml

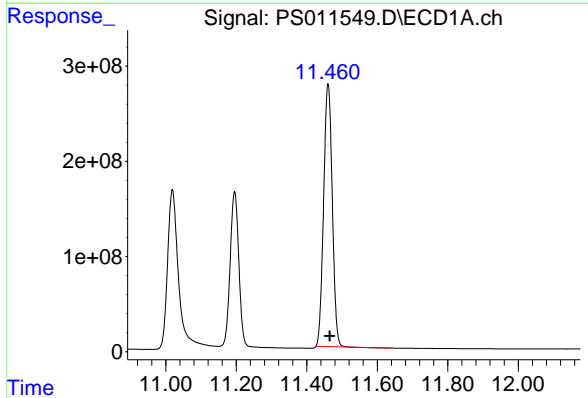


#15 Picloram
 R.T.: 11.019 min
 Delta R.T.: 0.000 min
 Response: 3670342715
 Conc: 581.68 ng/ml

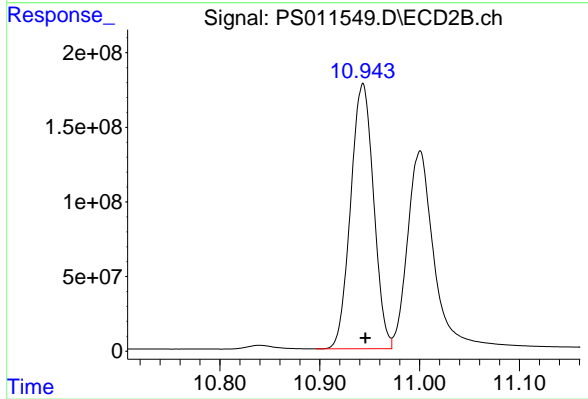
Instrument :
 ECD_S
 ClientSampled :



#15 Picloram
 R.T.: 11.001 min
 Delta R.T.: 0.001 min
 Response: 2533329877
 Conc: 579.26 ng/ml



#16 DCPA
 R.T.: 11.460 min
 Delta R.T.: -0.005 min
 Response: 4681506537
 Conc: 726.61 ng/ml



#16 DCPA
 R.T.: 10.943 min
 Delta R.T.: -0.003 min
 Response: 2838001094
 Conc: 750.41 ng/ml