

Data Path : Z:\pestpcbsrv\HPCHEM1\ECD\_S\Data\PS080118\  
 Data File : PS001338.D  
 Signal(s) : Signal #1: ECD1A.ch Signal #2: ECD2B.ch  
 Acq On : 01 Aug 2018 23:42  
 Operator : UA  
 Sample : J4231-19  
 Misc :  
 ALS Vial : 15 Sample Multiplier: 1

Instrument :  
 ECD\_S  
 ClientSampleId :

Integration File signal 1: autoint1.e  
 Integration File signal 2: autoint2.e  
 Quant Time: Aug 02 00:51:46 2018  
 Quant Method : Z:\pestpcbsrv\HPCHEM1\ECD\_S\Method\PS072118.M  
 Quant Title : 8080.M  
 QLast Update : Sat Jul 21 01:18:58 2018  
 Response via : Initial Calibration  
 Integrator: ChemStation

Volume Inj. : 2 µl  
 Signal #1 Phase : Rtx-CLPesticides Signal #2 Phase: Rtx-CLPesticides2  
 Signal #1 Info : 30M x 0.32mm x0.5 Signal #2 Info : 30M x 0.32mm x 0.25µm

	Compound	RT#1	RT#2	Resp#1	Resp#2	ng/ml	ng/ml
-----							
System Monitoring Compounds							
4) S	2,4-DCAA	11.612	11.032	31933648	22419565	172.103	123.269 #
Target Compounds							
5) T	DICAMBA	0.000	11.276	0	5021883	N.D.	7.327 #
6) T	MCPP	12.305	0.000	6978812	0	13.885	N.D. #
7) T	MCPA	12.581	0.000	2617379	0	3.319	N.D. #
12) T	2,4,5-T	0.000	14.713	0	33156693	N.D.	35.894 #
13) T	2,4-DB	15.918	15.293	2815663	13351845	19.558	100.267 #
14) T	DINOSEB	0.000	15.727	0	13830525	N.D.	19.457 #
15) T	Picloram	0.000	16.904	0	9996225	N.D.	7.251 #
16) T	DCPA	17.762	16.979	5509612	15413490	4.081	10.672 #
-----							

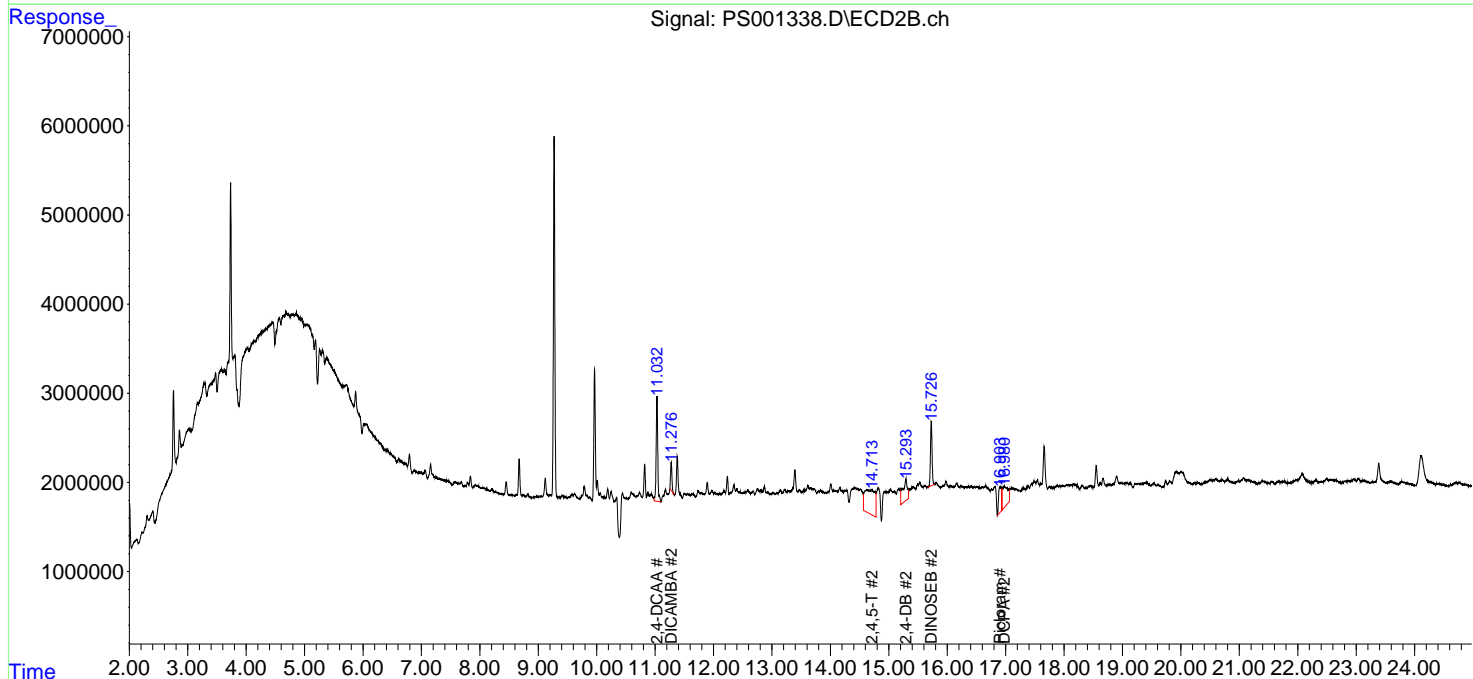
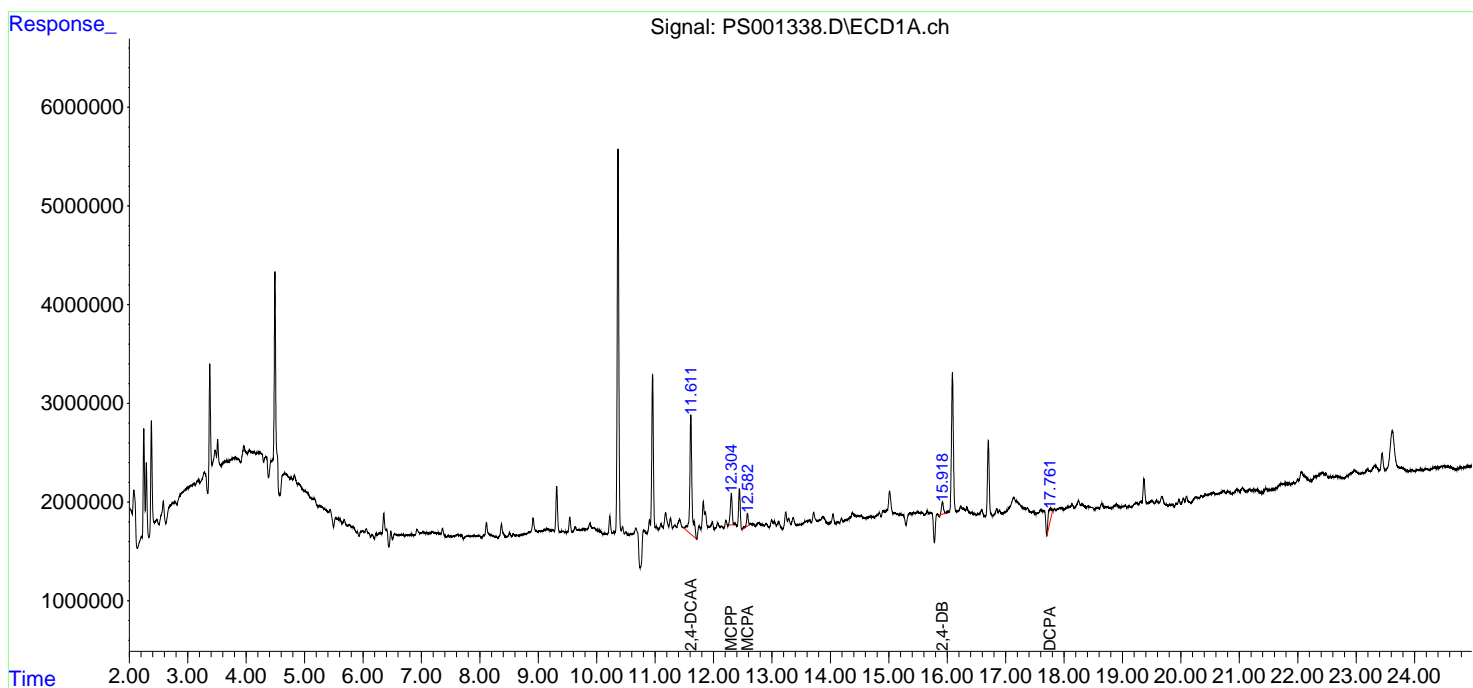
(f)=RT Delta > 1/2 Window (#)=Amounts differ by > 25% (m)=manual int.

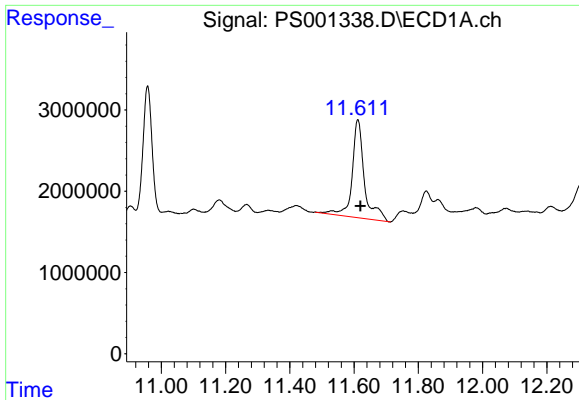
Data Path : Z:\pestpcbsrv\HPCHEM1\ECD\_S\Data\PS080118\  
 Data File : PS001338.D  
 Signal(s) : Signal #1: ECD1A.ch Signal #2: ECD2B.ch  
 Acq On : 01 Aug 2018 23:42  
 Operator : UA  
 Sample : J4231-19  
 Misc :  
 ALS Vial : 15 Sample Multiplier: 1

Instrument :  
 ECD\_S  
 ClientSampleId :

Integration File signal 1: autoint1.e  
 Integration File signal 2: autoint2.e  
 Quant Time: Aug 02 00:51:46 2018  
 Quant Method : Z:\pestpcbsrv\HPCHEM1\ECD\_S\Method\PS072118.M  
 Quant Title : 8080.M  
 QLast Update : Sat Jul 21 01:18:58 2018  
 Response via : Initial Calibration  
 Integrator: ChemStation

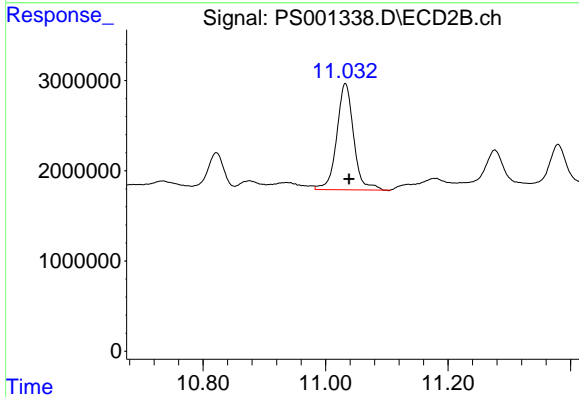
Volume Inj. : 2 µl  
 Signal #1 Phase : Rtx-CLPesticides Signal #2 Phase: Rtx-CLPesticides2  
 Signal #1 Info : 30M x 0.32mm x0.5 Signal #2 Info : 30M x 0.32mm x 0.25µm



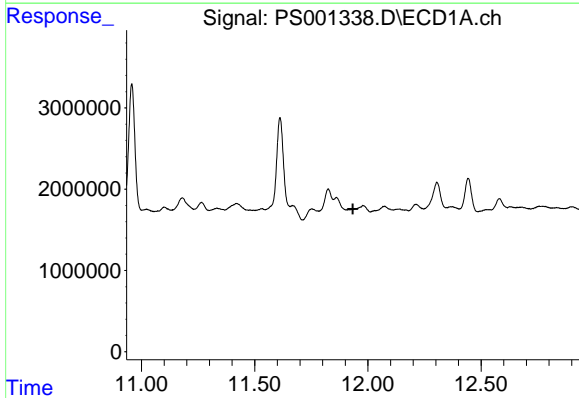


#4 2,4-DCAA  
 R.T.: 11.612 min  
 Delta R.T.: -0.008 min  
 Response: 31933648  
 Conc: 172.10 ng/ml

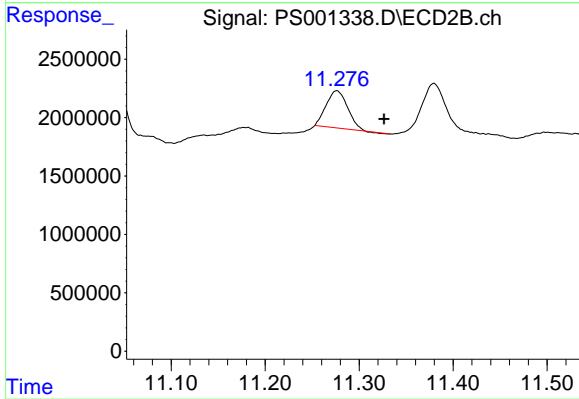
Instrument :  
 ECD\_S  
 ClientSampleId :



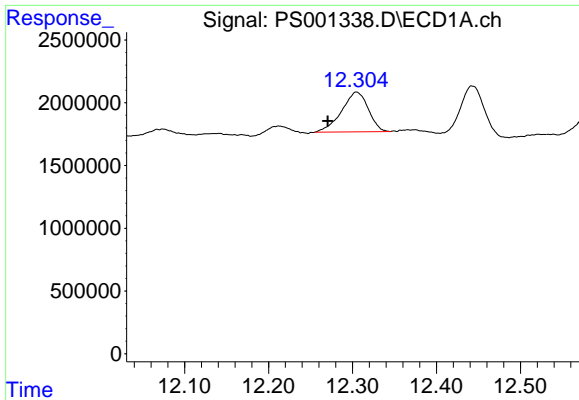
#4 2,4-DCAA  
 R.T.: 11.032 min  
 Delta R.T.: -0.006 min  
 Response: 22419565  
 Conc: 123.27 ng/ml



#5 DICAMBA  
 R.T.: 0.000 min  
 Exp R.T. : 11.934 min  
 Response: 0  
 Conc: N.D.



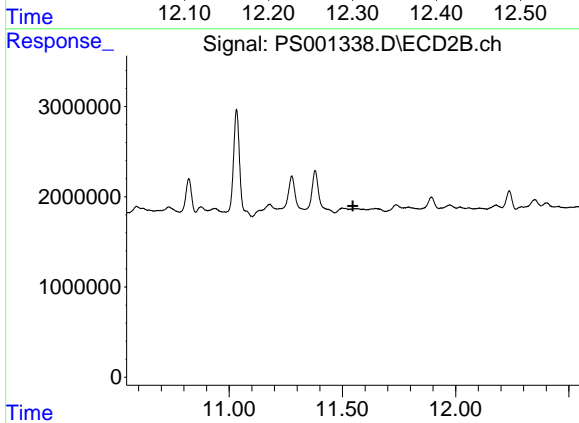
#5 DICAMBA  
 R.T.: 11.276 min  
 Delta R.T.: -0.050 min  
 Response: 5021883  
 Conc: 7.33 ng/ml



#6 MCPP

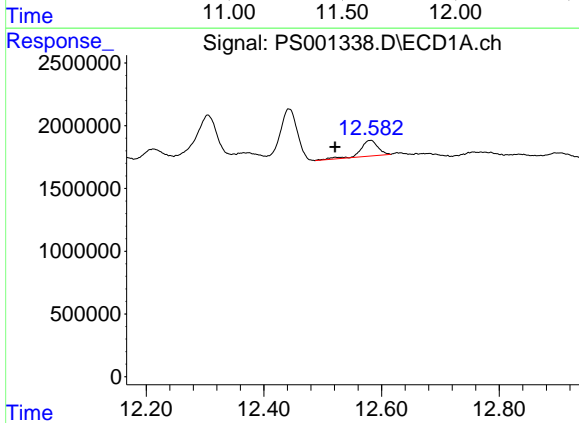
R.T.: 12.305 min  
 Delta R.T.: 0.035 min  
 Response: 6978812  
 Conc: 13.89 ug/ml

Instrument :  
 ECD\_S  
 ClientSampleId :



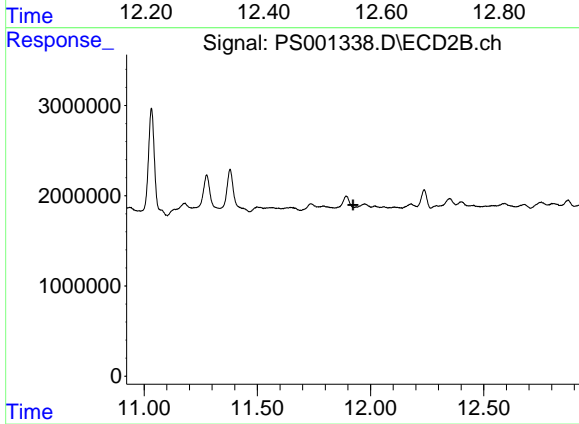
#6 MCPP

R.T.: 0.000 min  
 Exp R.T. : 11.546 min  
 Response: 0  
 Conc: N.D.



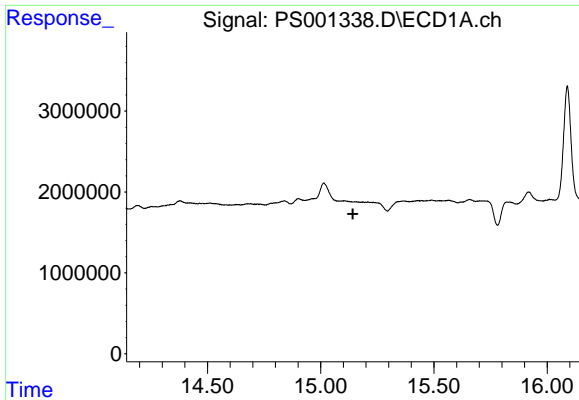
#7 MCPA

R.T.: 12.581 min  
 Delta R.T.: 0.060 min  
 Response: 2617379  
 Conc: 3.32 ug/ml



#7 MCPA

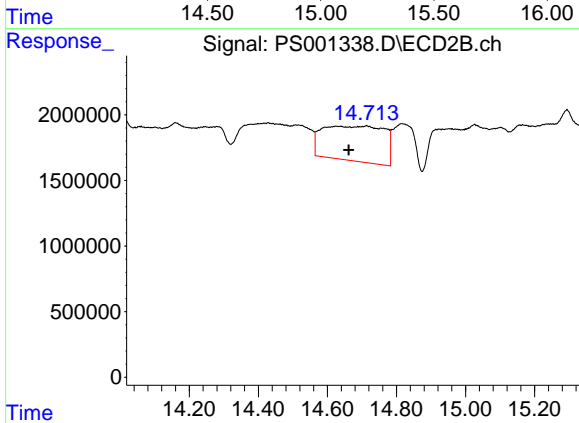
R.T.: 0.000 min  
 Exp R.T. : 11.922 min  
 Response: 0  
 Conc: N.D.



#12 2,4,5-T

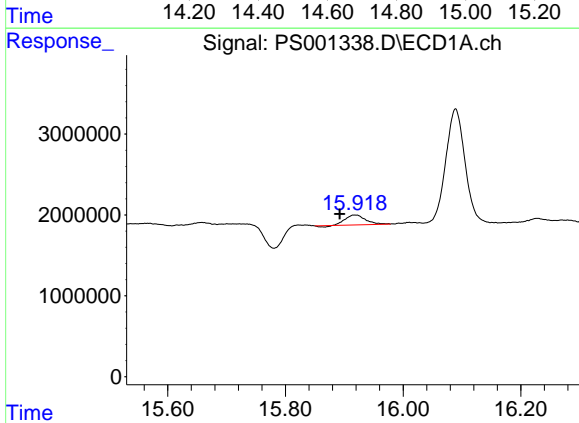
R.T.: 0.000 min  
 Exp R.T.: 15.142 min  
 Response: 0  
 Conc: N.D.

Instrument :  
 ECD\_S  
 ClientSampled :



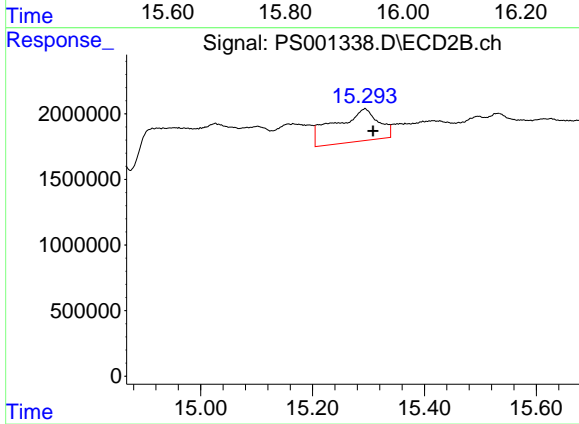
#12 2,4,5-T

R.T.: 14.713 min  
 Delta R.T.: 0.051 min  
 Response: 33156693  
 Conc: 35.89 ng/ml



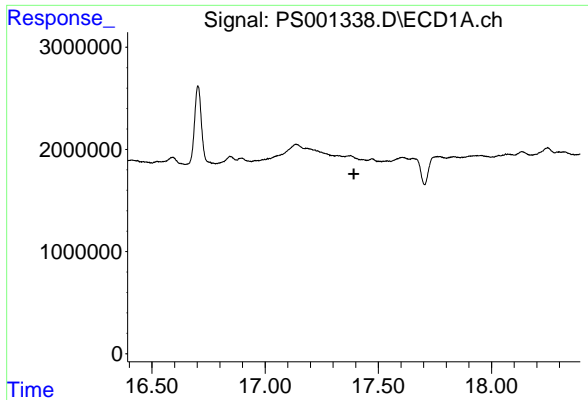
#13 2,4-DB

R.T.: 15.918 min  
 Delta R.T.: 0.026 min  
 Response: 2815663  
 Conc: 19.56 ng/ml



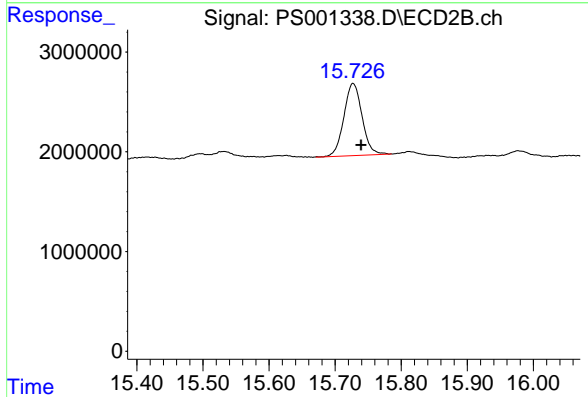
#13 2,4-DB

R.T.: 15.293 min  
 Delta R.T.: -0.016 min  
 Response: 13351845  
 Conc: 100.27 ng/ml

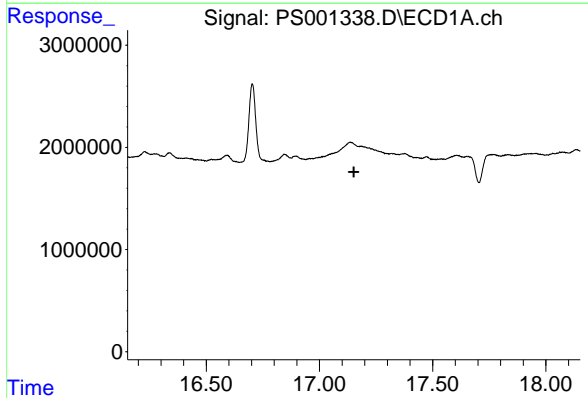


#14 DINOSEB  
 R.T.: 0.000 min  
 Exp R.T. : 17.392 min  
 Response: 0  
 Conc: N.D.

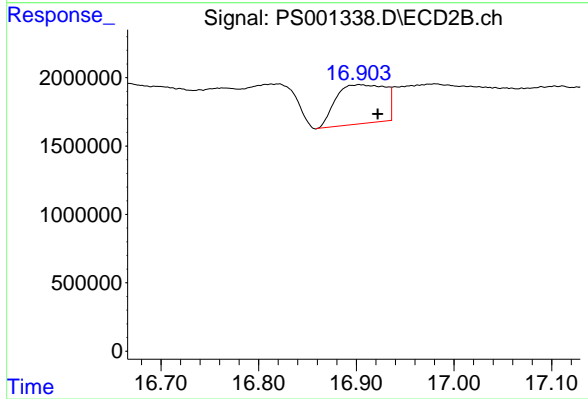
Instrument :  
 ECD\_S  
 ClientSampled :



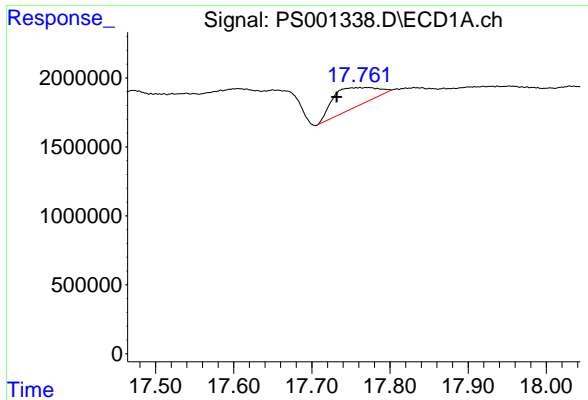
#14 DINOSEB  
 R.T.: 15.727 min  
 Delta R.T.: -0.012 min  
 Response: 13830525  
 Conc: 19.46 ng/ml



#15 Picloram  
 R.T.: 0.000 min  
 Exp R.T. : 17.152 min  
 Response: 0  
 Conc: N.D.



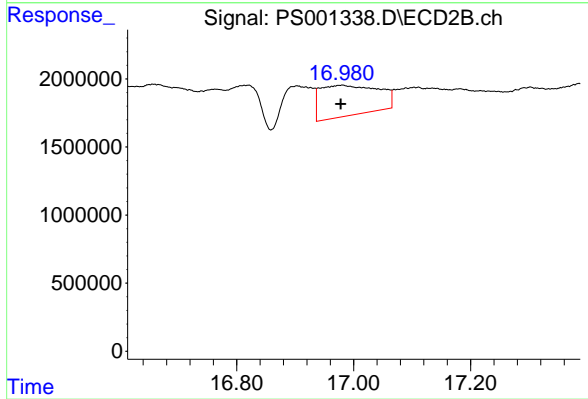
#15 Picloram  
 R.T.: 16.904 min  
 Delta R.T.: -0.018 min  
 Response: 9996225  
 Conc: 7.25 ng/ml



#16 DCPA

R.T.: 17.762 min  
Delta R.T.: 0.030 min  
Response: 5509612  
Conc: 4.08 ng/ml

Instrument :  
ECD\_S  
ClientSampleId :



#16 DCPA

R.T.: 16.979 min  
Delta R.T.: 0.000 min  
Response: 15413490  
Conc: 10.67 ng/ml