

Data Path : Z:\pestpcbsrv\HPCHEM1\ECD\_S\Data\PS080122\  
 Data File : PS020134.D  
 Signal(s) : Signal #1: ECD1A.ch Signal #2: ECD2B.ch  
 Acq On : 01 Aug 2022 17:14  
 Operator : AJ\MA  
 Sample : N3964-03  
 Misc :  
 ALS Vial : 18 Sample Multiplier: 1

Instrument :  
 ECD\_S  
 ClientSampleId :

Integration File signal 1: autoint1.e  
 Integration File signal 2: autoint2.e  
 Quant Time: Aug 02 01:36:55 2022  
 Quant Method : Z:\pestpcbsrv\HPCHEM1\ECD\_S\Method\PS072022.M  
 Quant Title : 8080.M  
 QLast Update : Wed Jul 20 17:52:40 2022  
 Response via : Initial Calibration  
 Integrator: ChemStation

Volume Inj. : 2 µl  
 Signal #1 Phase : Rtx-CLPesticides Signal #2 Phase: Rtx-CLPesticides2  
 Signal #1 Info : 30M x 0.32mm x0.5 Signal #2 Info : 30M x 0.32mm x 0.25µm

	Compound	RT#1	RT#2	Resp#1	Resp#2	ng/ml	ng/ml
-----							
System Monitoring Compounds							
4) S	2,4-DCAA	7.189	6.775	822.5E6	228.6E6	248.048	253.750
Target Compounds							
1) T	Dalapon	2.969f	2.482	255.5E6	86608426	46.301	72.473 #
2) T	3,5-DICHL...	6.426	5.982	-4057096	29174583	N.D.	21.039
3) T	4-Nitroph...	7.033	6.397	5241977	2898479	3.646	6.000 #
5) T	DICAMBA	7.387	6.973	33536848	5654165	2.557	1.379 #
6) T	MCP P	7.544	7.042	34667082	950143	3.307	<MDL #
7) T	MCPA	7.676	7.232	41349132	16963095	2.768	3.977 #
8) T	DICHLORPROP	8.011f	7.582	8217704	8373971	2.372	8.072 #
9) T	2,4-D	0.000	7.832	0	14238775	N.D.	11.410
10) T	Pentachlo...	8.591	8.250	2956890	153817	<MDL	<MDL #
11) T	2,4,5-TP ...	9.140	8.676	17866450	2852265	<MDL	<MDL #
12) T	2,4,5-T	9.497f	9.005	26587211	19985690	1.230	3.624 #
13) T	2,4-DB	10.030	9.532	402.9E6	53409580	92.488	74.823
14) T	DINOSEB	11.111	9.863	416.6E6	9970520	23.183	2.400 #
15) T	Picloram	10.942	10.843	254.6E6	22100216	7.310	2.876 #

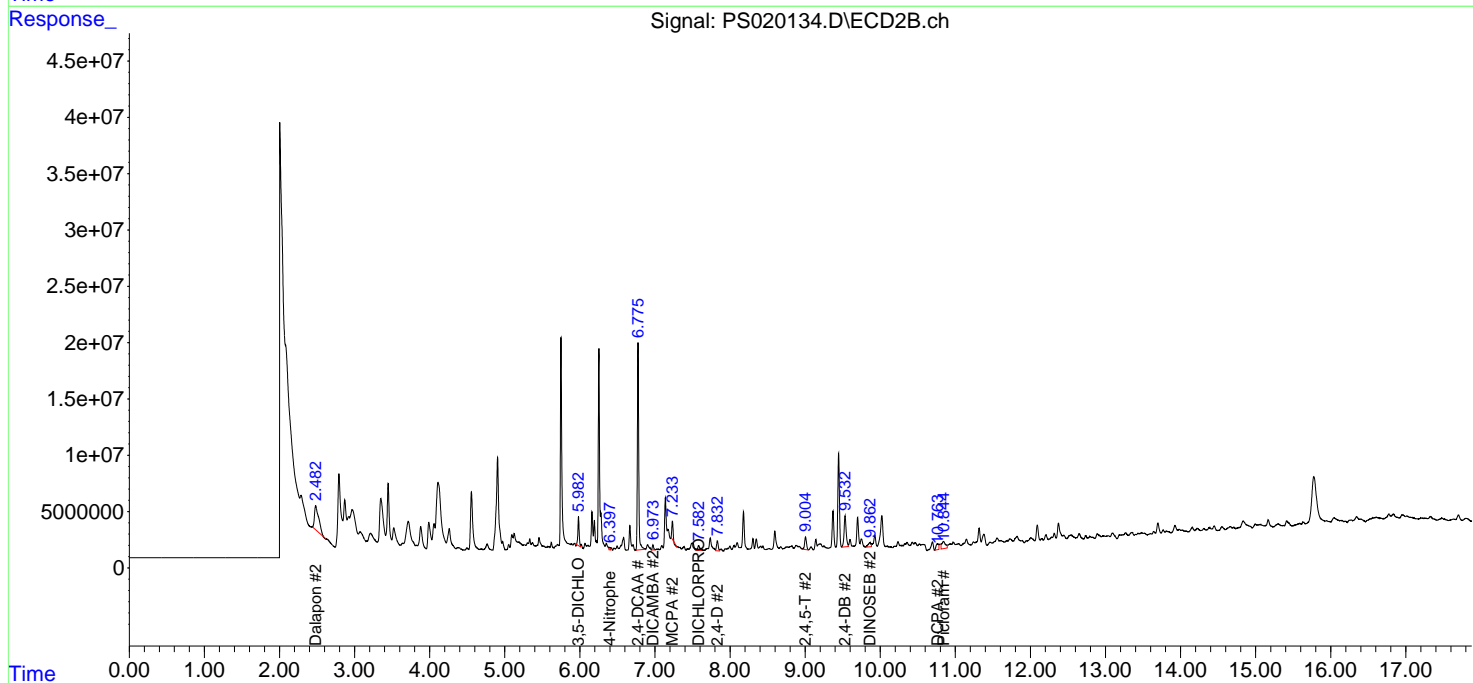
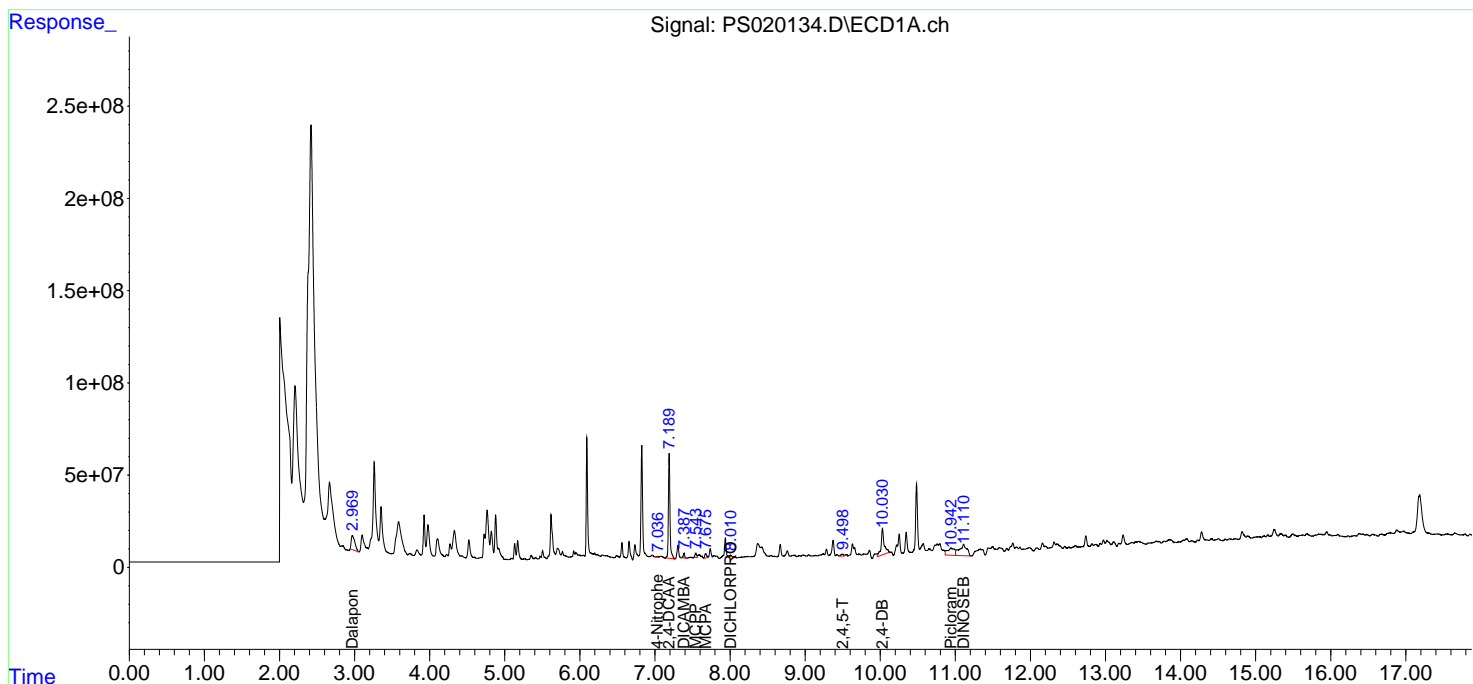
(f)=RT Delta > 1/2 Window (#)=Amounts differ by > 25% (m)=manual int.

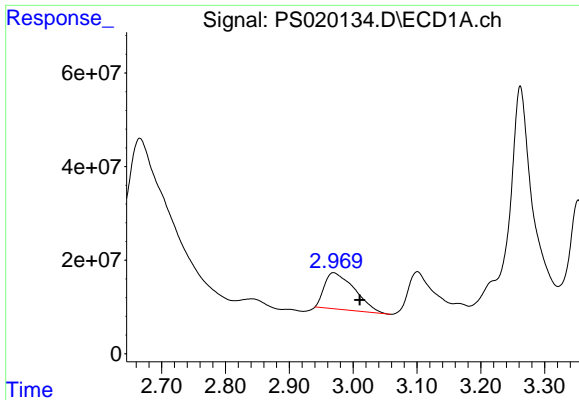
Data Path : Z:\pestpcbsrv\HPCHEM1\ECD\_S\Data\PS080122\  
 Data File : PS020134.D  
 Signal(s) : Signal #1: ECD1A.ch Signal #2: ECD2B.ch  
 Acq On : 01 Aug 2022 17:14  
 Operator : AJ\MA  
 Sample : N3964-03  
 Misc :  
 ALS Vial : 18 Sample Multiplier: 1

Instrument :  
 ECD\_S  
 ClientSampleId :

Integration File signal 1: autoint1.e  
 Integration File signal 2: autoint2.e  
 Quant Time: Aug 02 01:36:55 2022  
 Quant Method : Z:\pestpcbsrv\HPCHEM1\ECD\_S\Method\PS072022.M  
 Quant Title : 8080.M  
 QLast Update : Wed Jul 20 17:52:40 2022  
 Response via : Initial Calibration  
 Integrator: ChemStation

Volume Inj. : 2 µl  
 Signal #1 Phase : Rtx-CLPesticides Signal #2 Phase: Rtx-CLPesticides2  
 Signal #1 Info : 30M x 0.32mm x0.5 Signal #2 Info : 30M x 0.32mm x 0.25µm

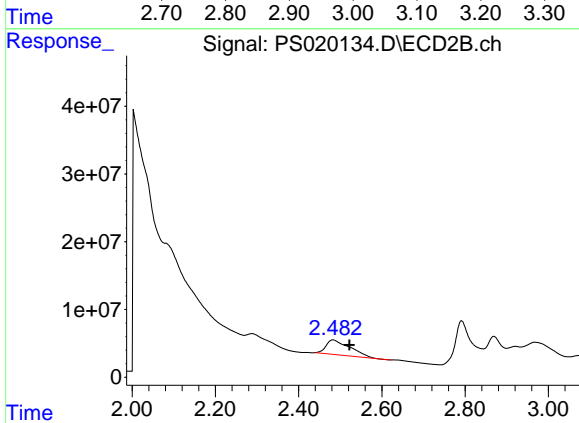




#1 Dalapon

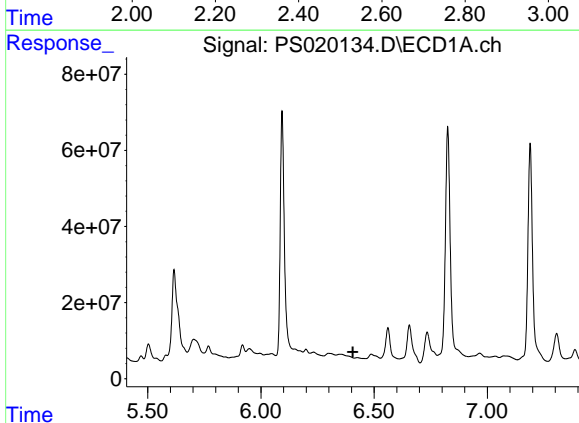
R.T.: 2.969 min  
 Delta R.T.: -0.041 min  
 Response: 255524538  
 Conc: 46.30 ng/ml

Instrument :  
 ECD\_S  
 ClientSampleId :



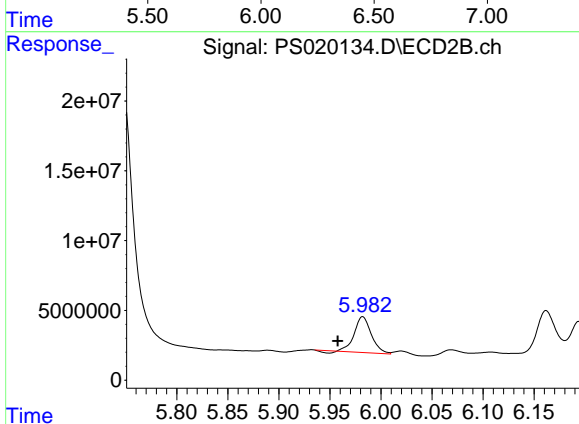
#1 Dalapon

R.T.: 2.482 min  
 Delta R.T.: -0.040 min  
 Response: 86608426  
 Conc: 72.47 ng/ml



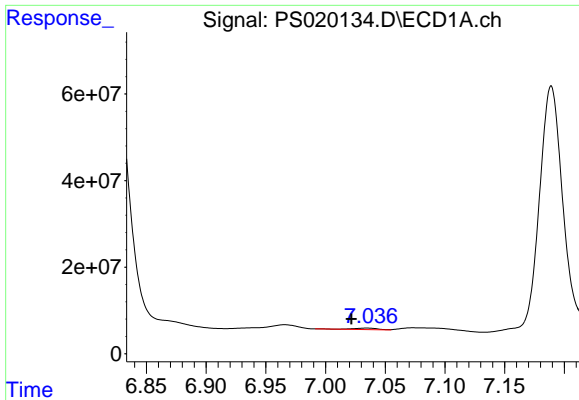
#2 3,5-DICHLOROBENZOIC ACID

R.T.: 6.426 min  
 Delta R.T.: 0.020 min  
 Response: -4057096  
 Conc: N.D.



#2 3,5-DICHLOROBENZOIC ACID

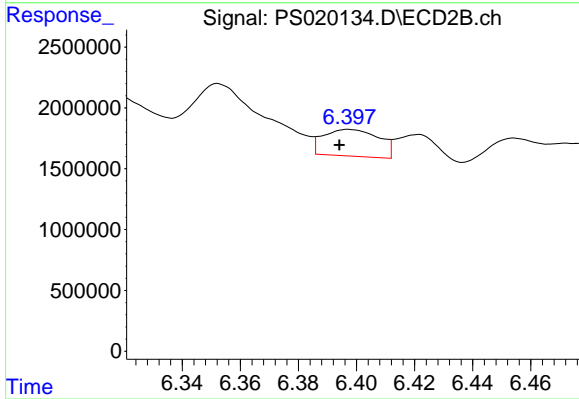
R.T.: 5.982 min  
 Delta R.T.: 0.024 min  
 Response: 29174583  
 Conc: 21.04 ng/ml



#3 4-Nitrophenol

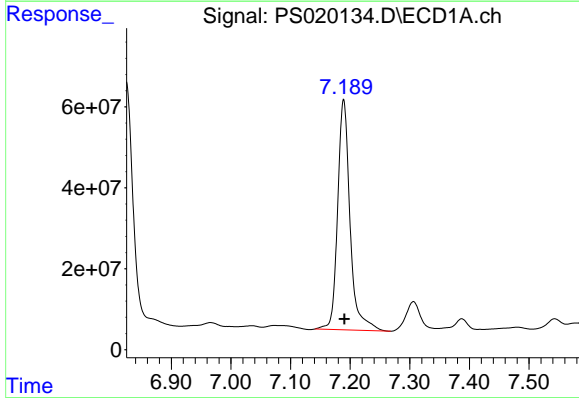
R.T.: 7.033 min  
 Delta R.T.: 0.012 min  
 Response: 5241977  
 Conc: 3.65 ng/ml

Instrument :  
 ECD\_S  
 ClientSampleId :



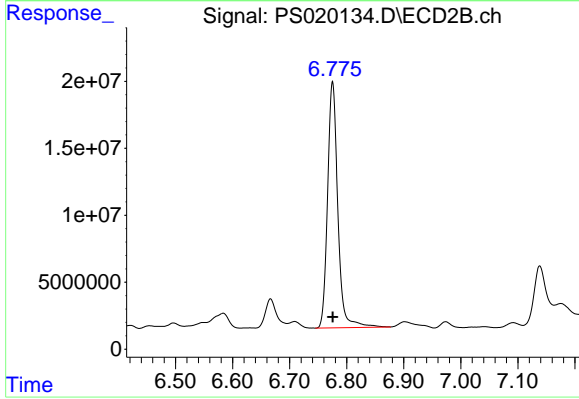
#3 4-Nitrophenol

R.T.: 6.397 min  
 Delta R.T.: 0.003 min  
 Response: 2898479  
 Conc: 6.00 ng/ml



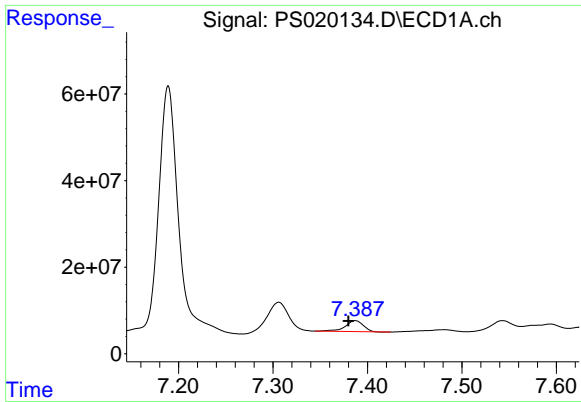
#4 2,4-DCAA

R.T.: 7.189 min  
 Delta R.T.: -0.001 min  
 Response: 822489513  
 Conc: 248.05 ng/ml



#4 2,4-DCAA

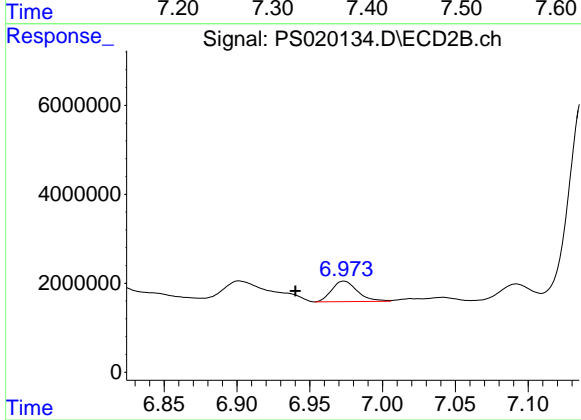
R.T.: 6.775 min  
 Delta R.T.: 0.000 min  
 Response: 228604340  
 Conc: 253.75 ng/ml



#5 DICAMBA

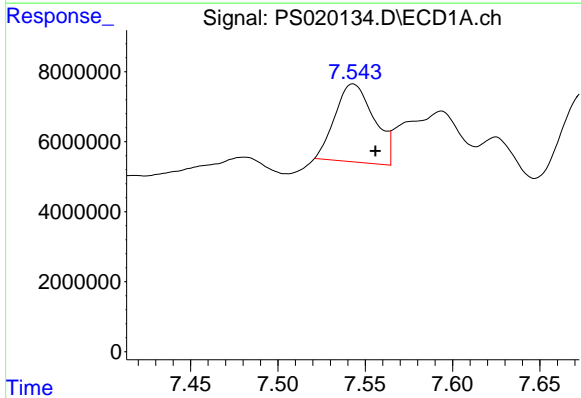
R.T.: 7.387 min  
 Delta R.T.: 0.007 min  
 Response: 33536848  
 Conc: 2.56 ng/ml

Instrument :  
 ECD\_S  
 ClientSampleId :



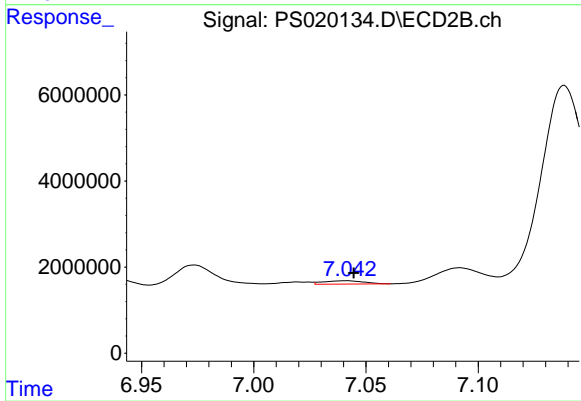
#5 DICAMBA

R.T.: 6.973 min  
 Delta R.T.: 0.033 min  
 Response: 5654165  
 Conc: 1.38 ng/ml



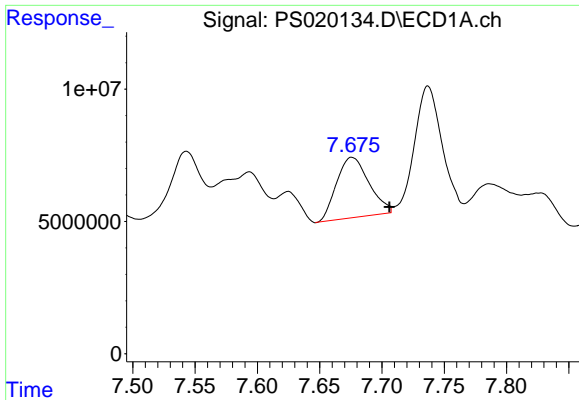
#6 MCP

R.T.: 7.544 min  
 Delta R.T.: -0.012 min  
 Response: 34667082  
 Conc: 3.31 ug/ml



#6 MCP

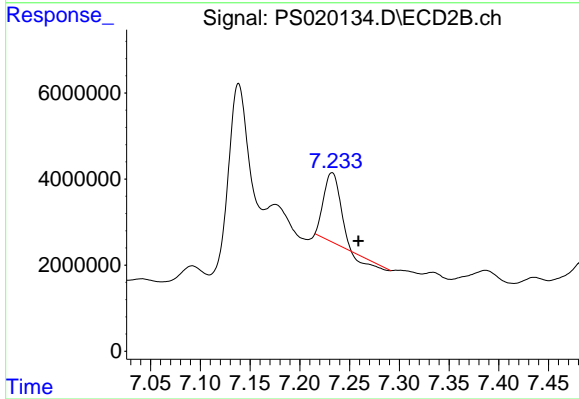
R.T.: 7.042 min  
 Delta R.T.: -0.003 min  
 Response: 950143  
 Conc: N.D.



#7 MCPA

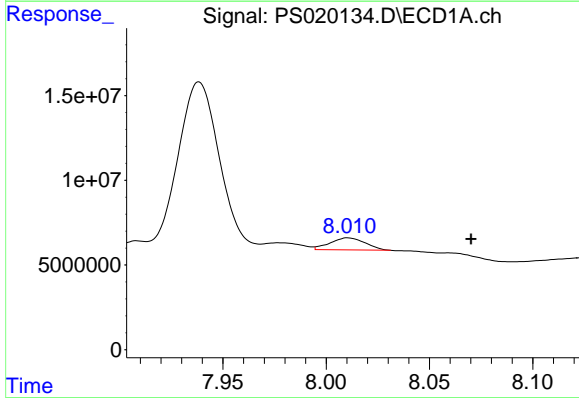
R.T.: 7.676 min  
 Delta R.T.: -0.030 min  
 Response: 41349132  
 Conc: 2.77 ug/ml

Instrument :  
 ECD\_S  
 ClientSampleId :



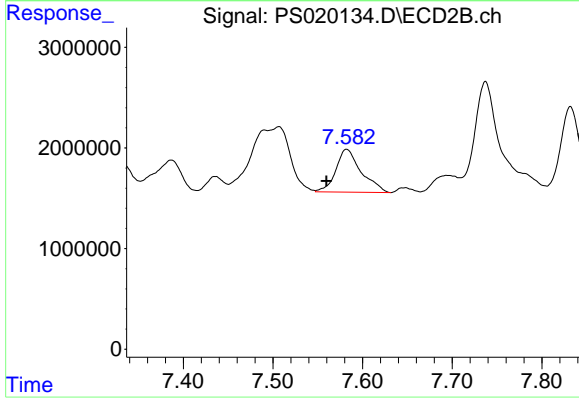
#7 MCPA

R.T.: 7.232 min  
 Delta R.T.: -0.026 min  
 Response: 16963095  
 Conc: 3.98 ug/ml



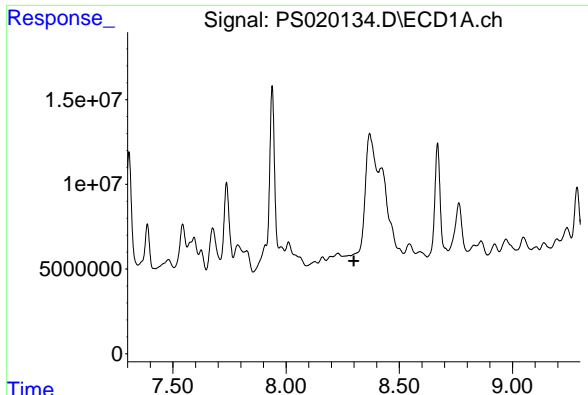
#8 DICHLORPROP

R.T.: 8.011 min  
 Delta R.T.: -0.059 min  
 Response: 8217704  
 Conc: 2.37 ng/ml



#8 DICHLORPROP

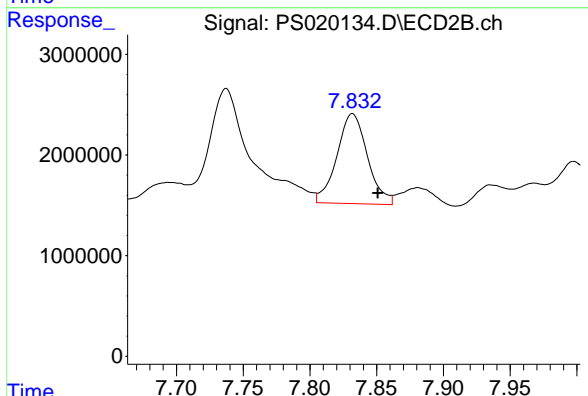
R.T.: 7.582 min  
 Delta R.T.: 0.022 min  
 Response: 8373971  
 Conc: 8.07 ng/ml



#9 2,4-D

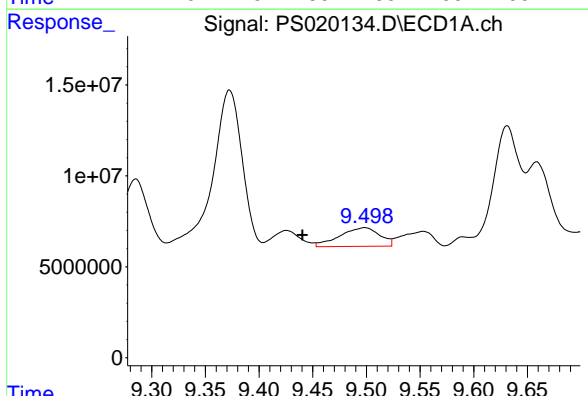
R.T.: 0.000 min  
 Exp R.T.: 8.299 min  
 Response: 0  
 Conc: N.D.

Instrument :  
 ECD\_S  
 ClientSampleId :



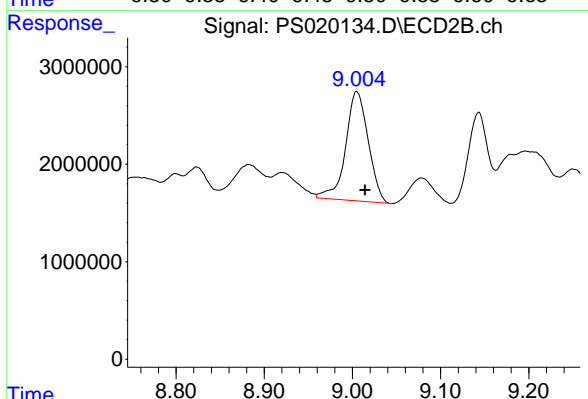
#9 2,4-D

R.T.: 7.832 min  
 Delta R.T.: -0.019 min  
 Response: 14238775  
 Conc: 11.41 ng/ml



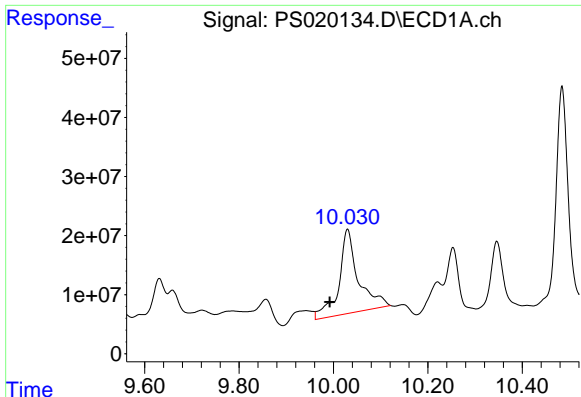
#12 2,4,5-T

R.T.: 9.497 min  
 Delta R.T.: 0.057 min  
 Response: 26587211  
 Conc: 1.23 ng/ml



#12 2,4,5-T

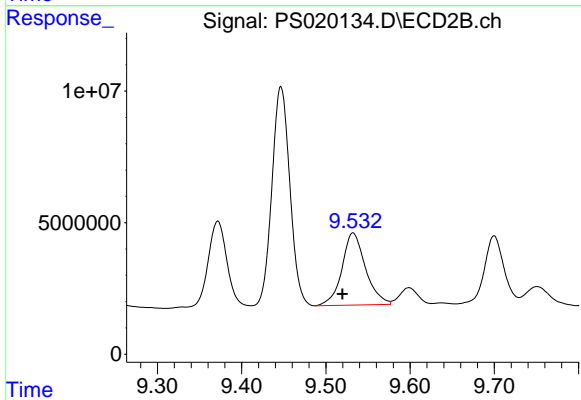
R.T.: 9.005 min  
 Delta R.T.: -0.009 min  
 Response: 19985690  
 Conc: 3.62 ng/ml



#13 2,4-DB

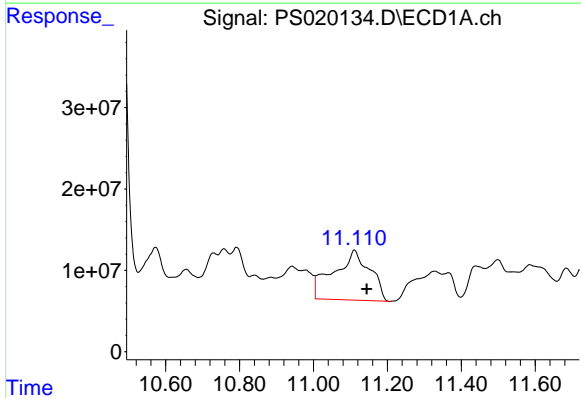
R.T.: 10.030 min  
 Delta R.T.: 0.038 min  
 Response: 402859257  
 Conc: 92.49 ng/ml

Instrument :  
 ECD\_S  
 ClientSampleId :



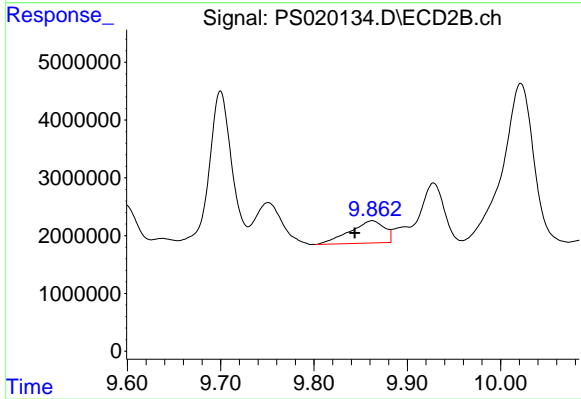
#13 2,4-DB

R.T.: 9.532 min  
 Delta R.T.: 0.013 min  
 Response: 53409580  
 Conc: 74.82 ng/ml



#14 DINOSEB

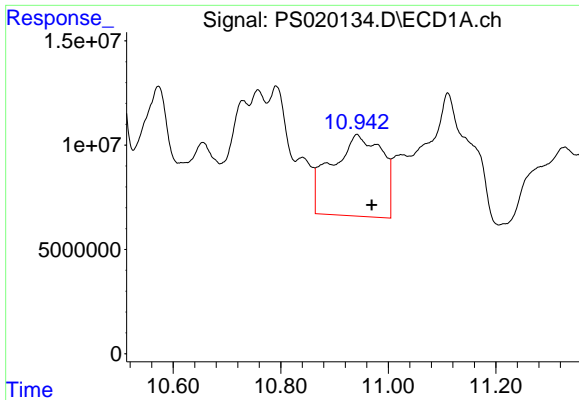
R.T.: 11.111 min  
 Delta R.T.: -0.033 min  
 Response: 416635119  
 Conc: 23.18 ng/ml



#14 DINOSEB

R.T.: 9.863 min  
 Delta R.T.: 0.019 min  
 Response: 9970520  
 Conc: 2.40 ng/ml

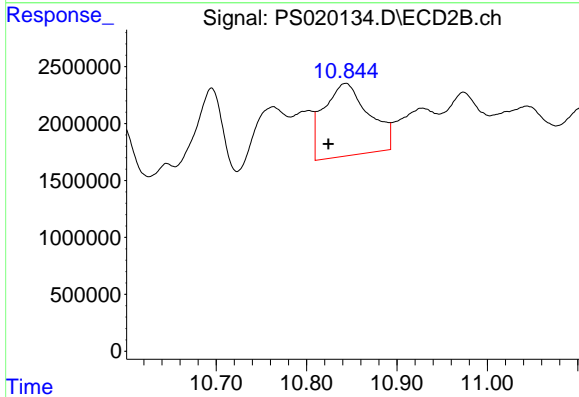




#15 Picloram

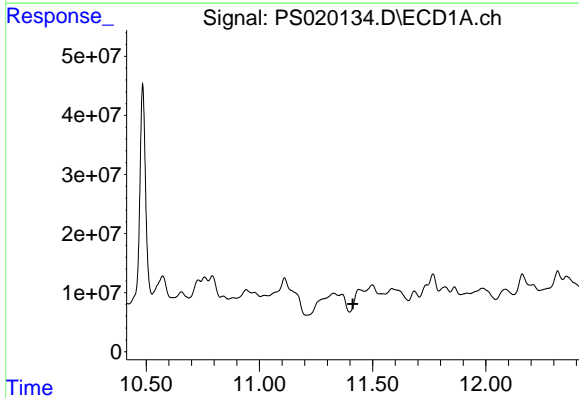
R.T.: 10.942 min  
 Delta R.T.: -0.027 min  
 Response: 254625551  
 Conc: 7.31 ng/ml

Instrument :  
 ECD\_S  
 ClientSampleId :



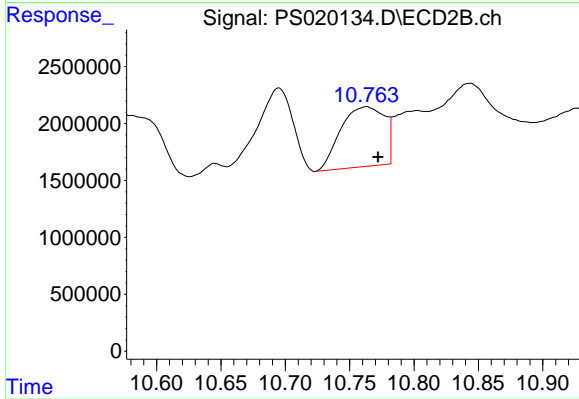
#15 Picloram

R.T.: 10.843 min  
 Delta R.T.: 0.019 min  
 Response: 22100216  
 Conc: 2.88 ng/ml



#16 DCPA

R.T.: 11.442 min  
 Delta R.T.: 0.029 min  
 Response: -57296035  
 Conc: N.D.



#16 DCPA

R.T.: 10.763 min  
 Delta R.T.: -0.009 min  
 Response: 12486507  
 Conc: 1.73 ng/ml