

Data Path : Z:\pestpcbsrv\HPCHEM1\ECD_S\Data\PS080320\
 Data File : PS011558.D
 Signal(s) : Signal #1: ECD1A.ch Signal #2: ECD2B.ch
 Acq On : 03 Aug 2020 10:57
 Operator : DD\AJ
 Sample : PB130659TB
 Misc :
 ALS Vial : 6 Sample Multiplier: 1

Instrument :
 ECD_S
 ClientSampleId :
 PB130659TB

Integration File signal 1: autoint1.e
 Integration File signal 2: autoint2.e
 Quant Time: Aug 03 14:30:23 2020
 Quant Method : Z:\pestpcbsrv\HPCHEM1\ECD_S\Method\PS071320.M
 Quant Title : 8080.M
 QLast Update : Mon Jul 13 16:10:29 2020
 Response via : Initial Calibration
 Integrator: ChemStation

Volume Inj. : 2 µl
 Signal #1 Phase : Rtx-CLPesticides Signal #2 Phase: Rtx-CLPesticides2
 Signal #1 Info : 30M x 0.32mm x0.5 Signal #2 Info : 30M x 0.32mm x 0.25µm

| Compound | RT#1 | RT#2 | Resp#1 | Resp#2 | ng/ml | ng/ml |
|-----------------------------|-------|-------|---------|---------|---------|---------|
| ----- | | | | | | |
| System Monitoring Compounds | | | | | | |
| 4) S 2,4-DCAA | 7.226 | 6.918 | 213.5E6 | 143.7E6 | 220.052 | 255.174 |

Target Compounds

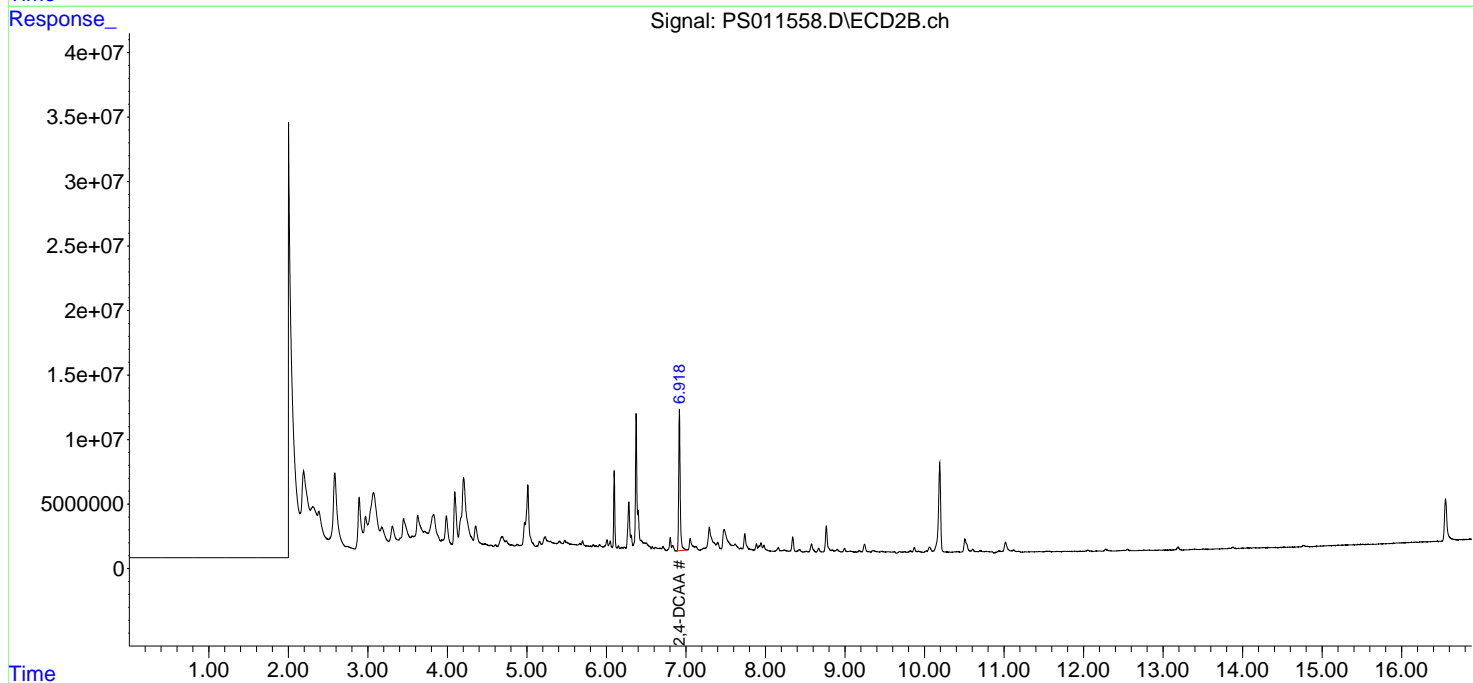
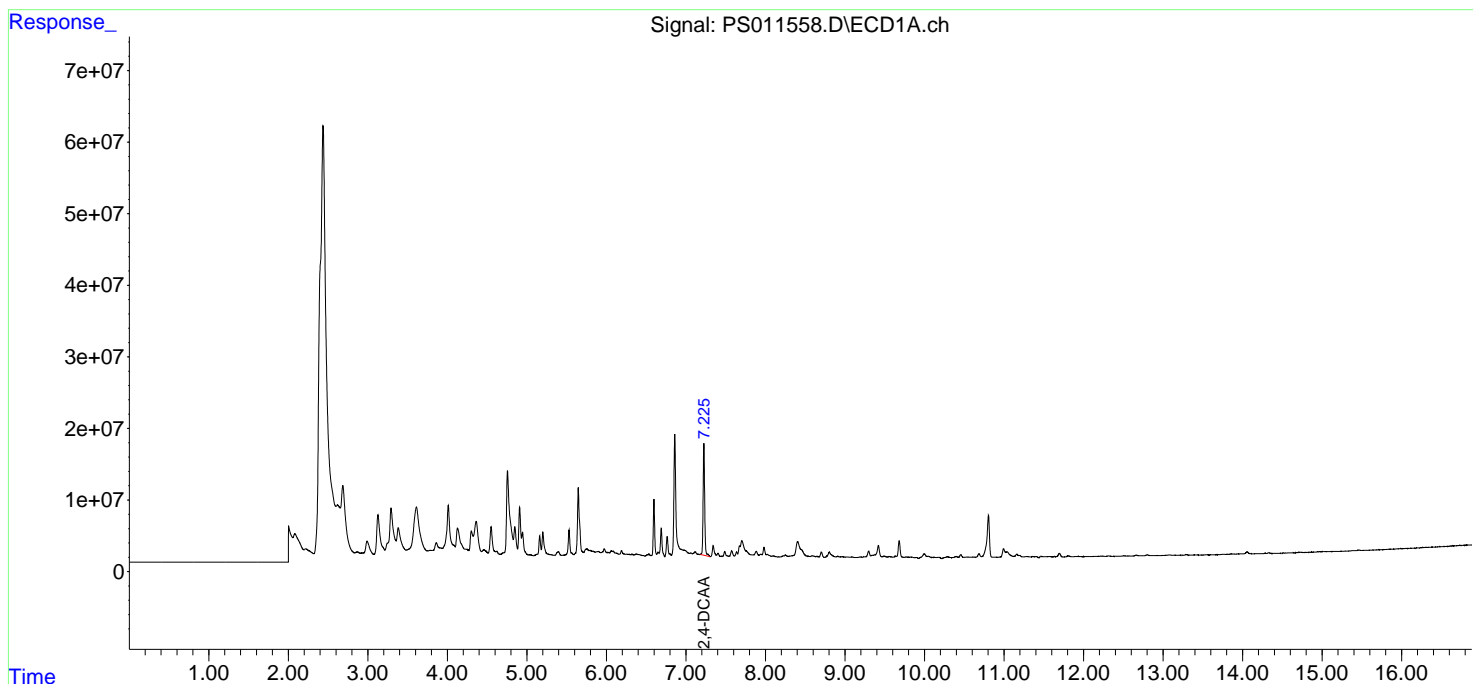
(f)=RT Delta > 1/2 Window (#)=Amounts differ by > 25% (m)=manual int.

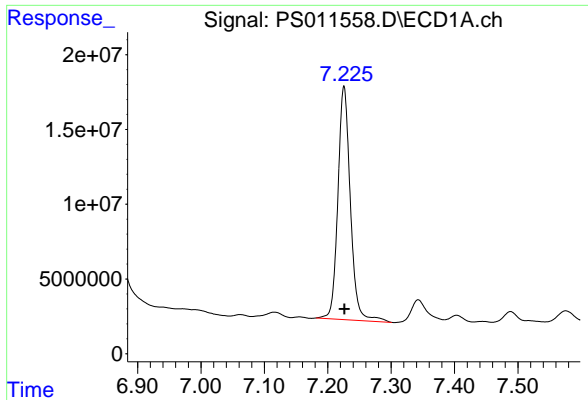
Data Path : Z:\pestpcbsrv\HPCHEM1\ECD_S\Data\PS080320\
 Data File : PS011558.D
 Signal(s) : Signal #1: ECD1A.ch Signal #2: ECD2B.ch
 Acq On : 03 Aug 2020 10:57
 Operator : DD\AJ
 Sample : PB130659TB
 Misc :
 ALS Vial : 6 Sample Multiplier: 1

Instrument :
 ECD_S
 ClientSampleId :
 PB130659TB

Integration File signal 1: autoint1.e
 Integration File signal 2: autoint2.e
 Quant Time: Aug 03 14:30:23 2020
 Quant Method : Z:\pestpcbsrv\HPCHEM1\ECD_S\Method\PS071320.M
 Quant Title : 8080.M
 QLast Update : Mon Jul 13 16:10:29 2020
 Response via : Initial Calibration
 Integrator: ChemStation

Volume Inj. : 2 µl
 Signal #1 Phase : Rtx-CLPesticides Signal #2 Phase: Rtx-CLPesticides2
 Signal #1 Info : 30M x 0.32mm x 0.5 Signal #2 Info : 30M x 0.32mm x 0.25µm

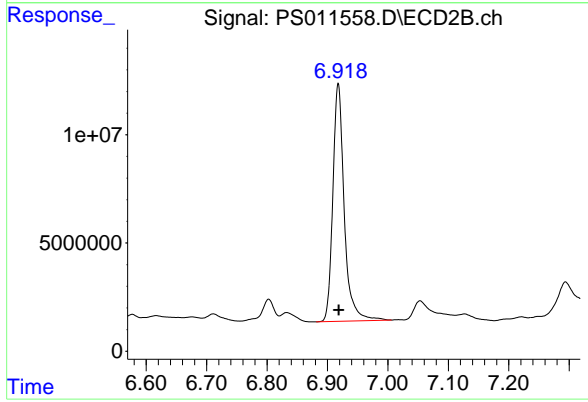




#4 2,4-DCAA

R.T.: 7.226 min
Delta R.T.: 0.000 min
Response: 213525023
Conc: 220.05 ng/ml

Instrument :
ECD_S
ClientSampleId :
PB130659TB



#4 2,4-DCAA

R.T.: 6.918 min
Delta R.T.: 0.000 min
Response: 143668800
Conc: 255.17 ng/ml