

Data Path : Z:\pestpcbsrv\HPCHEM1\ECD_S\Data\PS080322\
 Data File : PS020161.D
 Signal(s) : Signal #1: ECD1A.ch Signal #2: ECD2B.ch
 Acq On : 03 Aug 2022 23:55
 Operator : AJ\MA
 Sample : SOIL IDOC 02
 Misc : FOR YOGESH PATEL
 ALS Vial : 15 Sample Multiplier: 1

Instrument :
 ECD_S
ClientSampleId :
 SOIL IDOC 02

Integration File signal 1: autoint1.e
 Integration File signal 2: autoint2.e
 Quant Time: Aug 04 02:16:45 2022
 Quant Method : Z:\pestpcbsrv\HPCHEM1\ECD_S\Method\PS080322.M
 Quant Title : 8080.M
 QLast Update : Thu Aug 04 02:05:37 2022
 Response via : Initial Calibration
 Integrator: ChemStation

Volume Inj. : 2 µl
 Signal #1 Phase : Rtx-CLPesticides Signal #2 Phase: Rtx-CLPesticides2
 Signal #1 Info : 30M x 0.32mm x0.5 Signal #2 Info : 30M x 0.32mm x 0.25µm

	Compound	RT#1	RT#2	Resp#1	Resp#2	ng/ml	ng/ml

System Monitoring Compounds							
4) S	2,4-DCAA	7.183	6.761	1471.9E6	413.2E6	499.155	506.964
Target Compounds							
1) T	Dalapon	3.002	2.517	2291.1E6	503.6E6	473.246	463.901
2) T	3,5-DICHL...	6.398	5.946	1806.0E6	603.1E6	464.281	477.664
3) T	4-Nitroph...	7.019	6.385	597.9E6	230.5E6	430.481	469.386
5) T	DICAMBA	7.369	6.923	5478.8E6	1748.8E6	476.059	490.662
6) T	MCP P	7.536	7.016	420.7E6	130.0E6	45.353	47.655
7) T	MCPA	7.683	7.227	568.2E6	196.9E6	44.118	46.773
8) T	DICHLORPROP	8.061	7.543	1353.5E6	453.3E6	472.847	484.708
9) T	2,4-D	8.293	7.835	1445.7E6	575.3E6	480.031	490.449
10) T	Pentachlo...	8.594	8.257	20031.6E6	6690.4E6	512.092	522.849
11) T	2,4,5-TP ...	9.145	8.618	8385.5E6	2719.4E6	492.162	508.426
12) T	2,4,5-T	9.432	8.996	8980.9E6	2580.3E6	494.784	506.901
13) T	2,4-DB	9.984	9.500	1806.6E6	334.0E6	495.030	491.113
14) T	DINOSEB	11.131	9.822	8027.5E6	1900.4E6	504.582	500.875
15) T	Picloram	10.960	10.804	16188.4E6	3830.9E6	511.991	507.762
16) T	DCPA	11.401	10.749	12830.5E6	3434.5E6	521.889	517.994

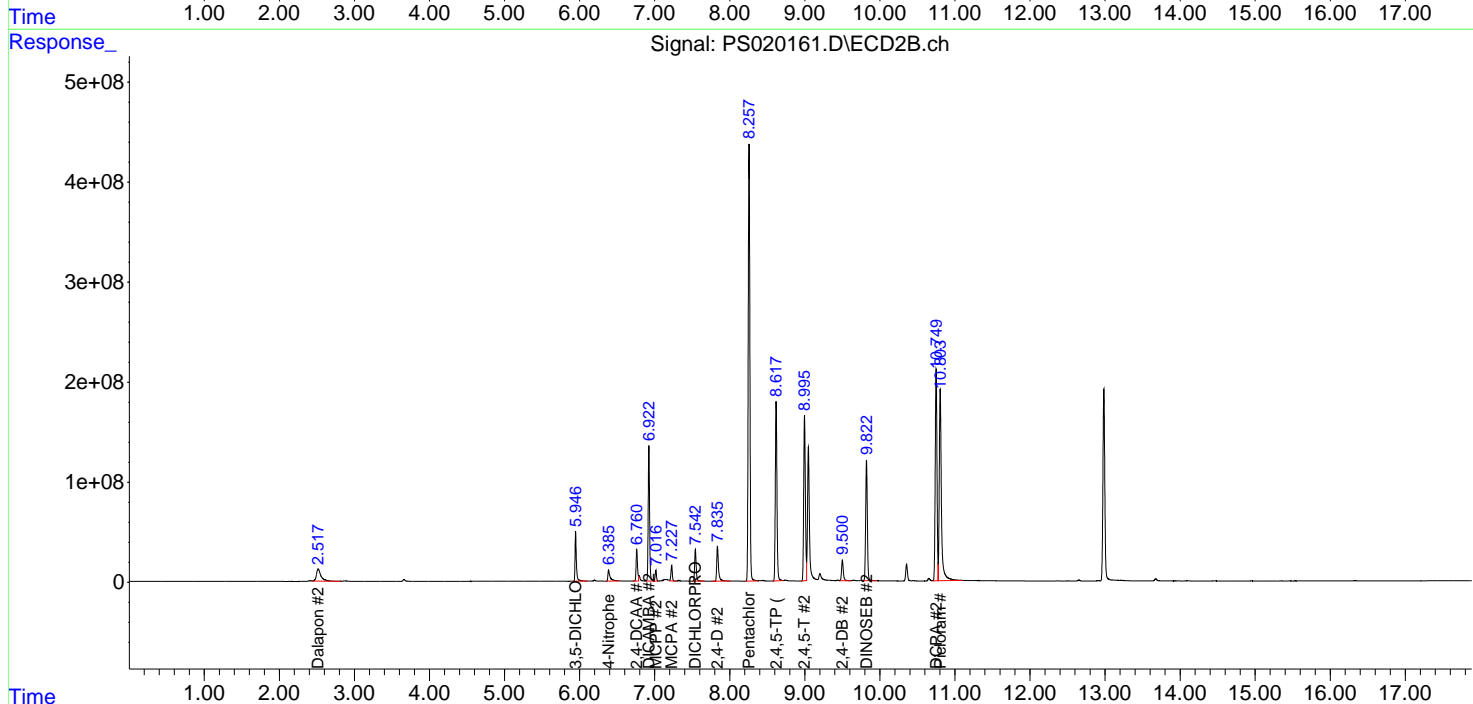
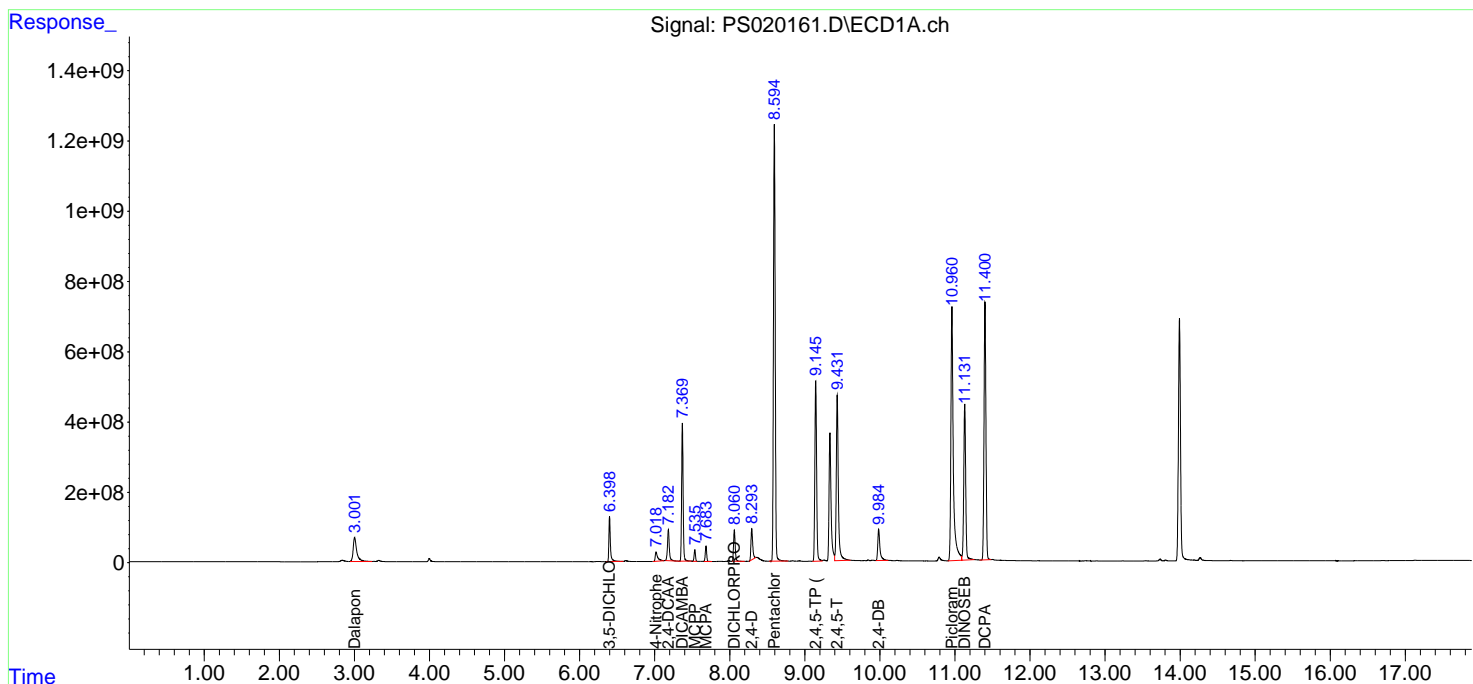
(f)=RT Delta > 1/2 Window (#)=Amounts differ by > 25% (m)=manual int.

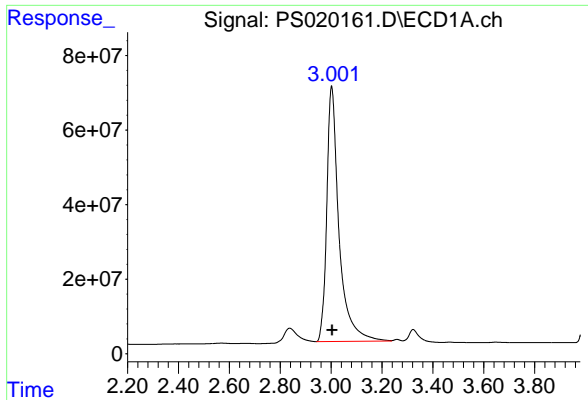
Data Path : Z:\pestpcbsrv\HPCHEM1\ECD_S\Data\PS080322\
 Data File : PS020161.D
 Signal(s) : Signal #1: ECD1A.ch Signal #2: ECD2B.ch
 Acq On : 03 Aug 2022 23:55
 Operator : AJ\MA
 Sample : SOIL IDOC 02
 Misc : FOR YOGESH PATEL
 ALS Vial : 15 Sample Multiplier: 1

Instrument :
 ECD_S
 ClientSampleId :
 SOIL IDOC 02

Integration File signal 1: autoint1.e
 Integration File signal 2: autoint2.e
 Quant Time: Aug 04 02:16:45 2022
 Quant Method : Z:\pestpcbsrv\HPCHEM1\ECD_S\Method\PS080322.M
 Quant Title : 8080.M
 QLast Update : Thu Aug 04 02:05:37 2022
 Response via : Initial Calibration
 Integrator: ChemStation

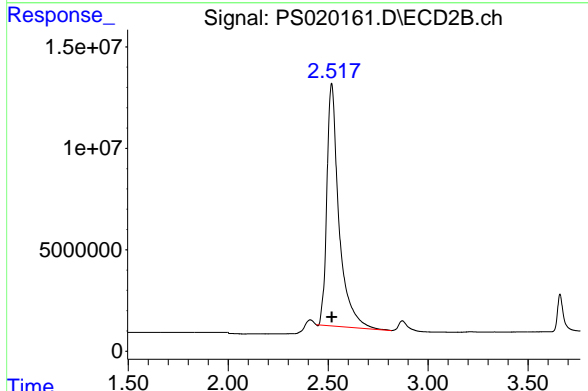
Volume Inj. : 2 µl
 Signal #1 Phase : Rtx-CLPesticides Signal #2 Phase: Rtx-CLPesticides2
 Signal #1 Info : 30M x 0.32mm x0.5 Signal #2 Info : 30M x 0.32mm x 0.25µm



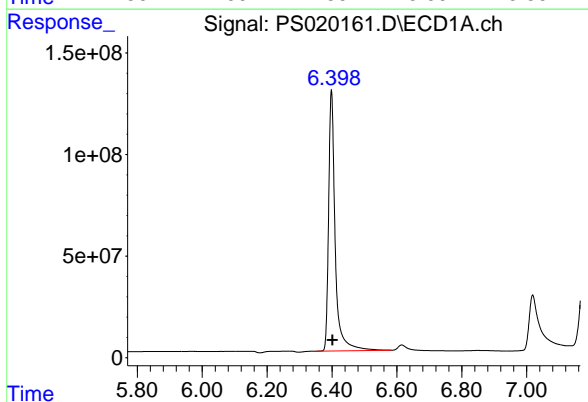


#1 Dalapon
 R.T.: 3.002 min
 Delta R.T.: -0.002 min
 Response: 2291130404
 Conc: 473.25 ng/ml

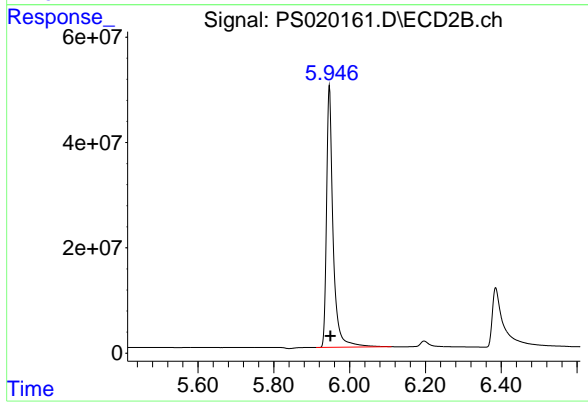
Instrument :
 ECD_S
 ClientSampleId :
 SOIL IDOC 02



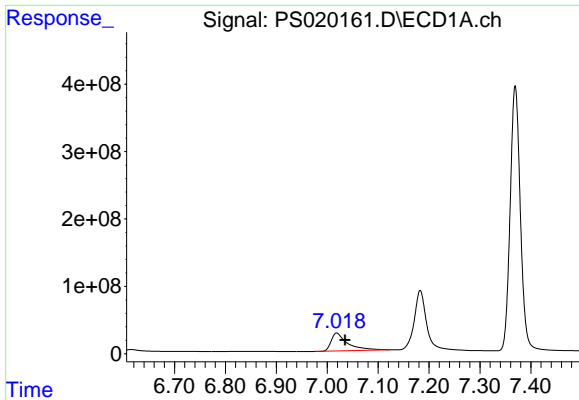
#1 Dalapon
 R.T.: 2.517 min
 Delta R.T.: -0.002 min
 Response: 503629815
 Conc: 463.90 ng/ml



#2 3,5-DICHLOROBENZOIC ACID
 R.T.: 6.398 min
 Delta R.T.: -0.003 min
 Response: 1806009364
 Conc: 464.28 ng/ml



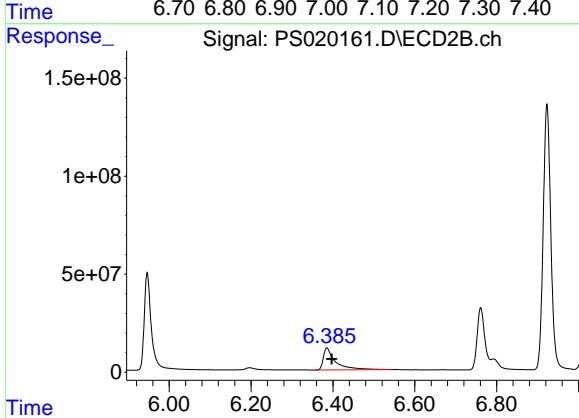
#2 3,5-DICHLOROBENZOIC ACID
 R.T.: 5.946 min
 Delta R.T.: -0.003 min
 Response: 603104651
 Conc: 477.66 ng/ml



#3 4-Nitrophenol

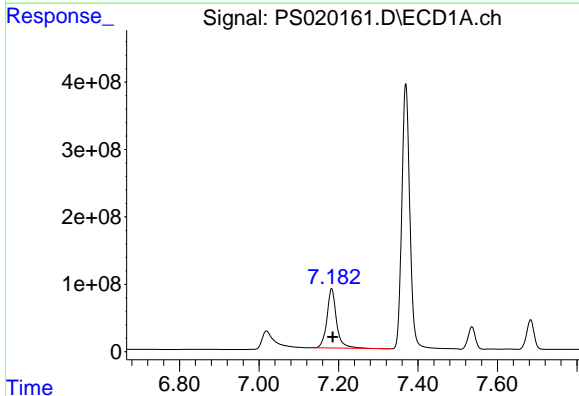
R.T.: 7.019 min
 Delta R.T.: -0.017 min
 Response: 597947863
 Conc: 430.48 ng/ml

Instrument :
 ECD_S
 ClientSampleId :
 SOIL IDOC 02



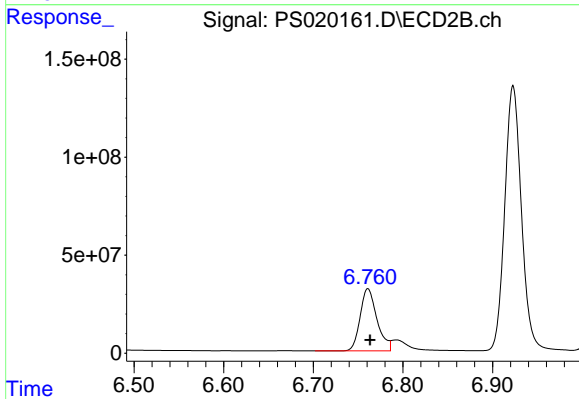
#3 4-Nitrophenol

R.T.: 6.385 min
 Delta R.T.: -0.012 min
 Response: 230525368
 Conc: 469.39 ng/ml



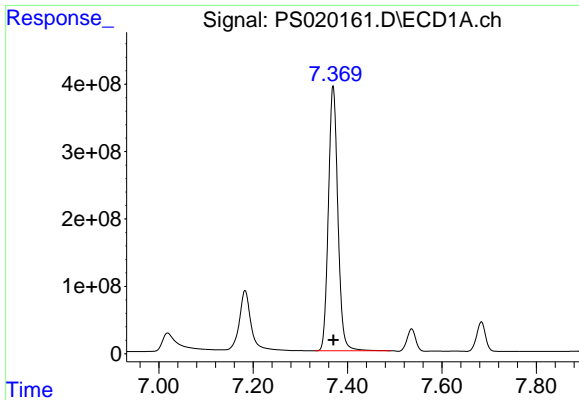
#4 2,4-DCAA

R.T.: 7.183 min
 Delta R.T.: -0.003 min
 Response: 1471871771
 Conc: 499.16 ng/ml



#4 2,4-DCAA

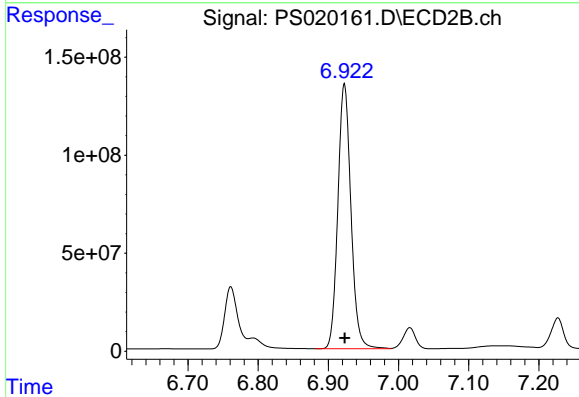
R.T.: 6.761 min
 Delta R.T.: -0.003 min
 Response: 413153422
 Conc: 506.96 ng/ml



#5 DICAMBA

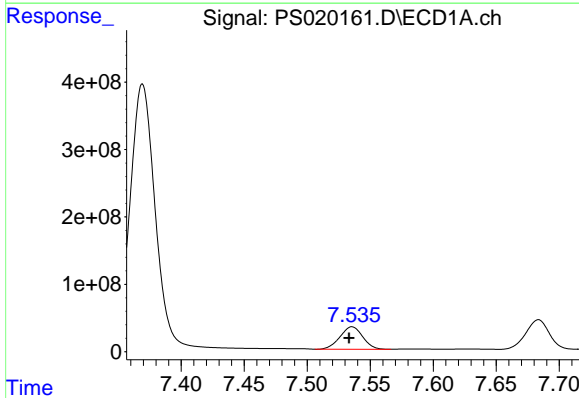
R.T.: 7.369 min
 Delta R.T.: 0.000 min
 Response: 5478799722
 Conc: 476.06 ng/ml

Instrument :
 ECD_S
 ClientSampleId :
 SOIL IDOC 02



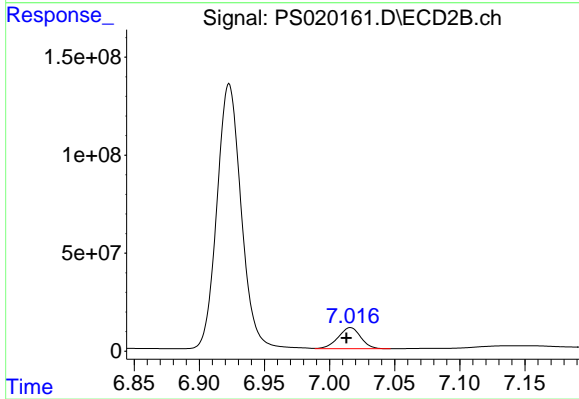
#5 DICAMBA

R.T.: 6.923 min
 Delta R.T.: 0.000 min
 Response: 1748783226
 Conc: 490.66 ng/ml



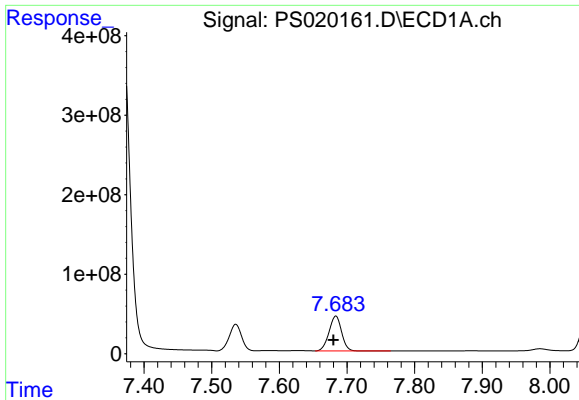
#6 MCP

R.T.: 7.536 min
 Delta R.T.: 0.002 min
 Response: 420712309
 Conc: 45.35 ug/ml



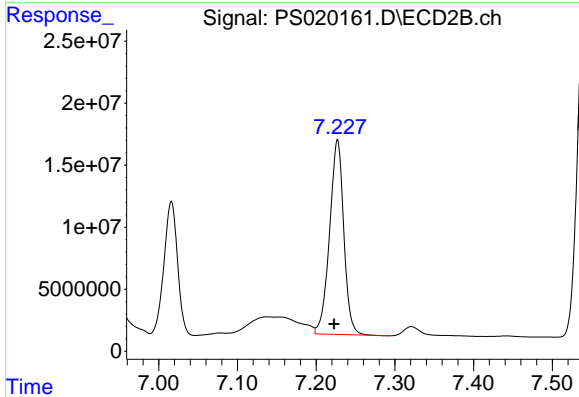
#6 MCP

R.T.: 7.016 min
 Delta R.T.: 0.003 min
 Response: 129996541
 Conc: 47.65 ug/ml

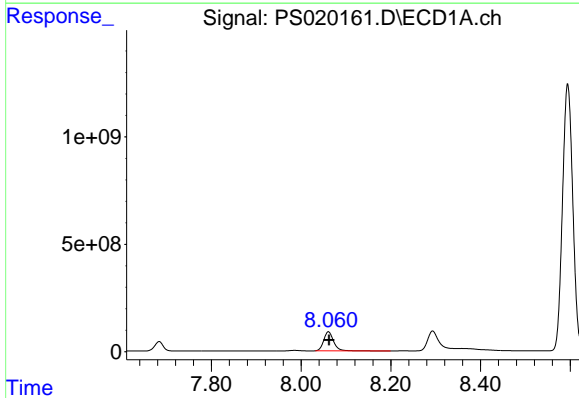


#7 MCPA
 R.T.: 7.683 min
 Delta R.T.: 0.003 min
 Response: 568244010
 Conc: 44.12 ug/ml

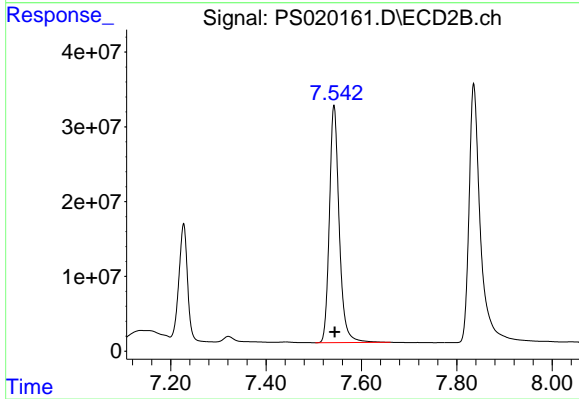
Instrument :
 ECD_S
 ClientSampleId :
 SOIL IDOC 02



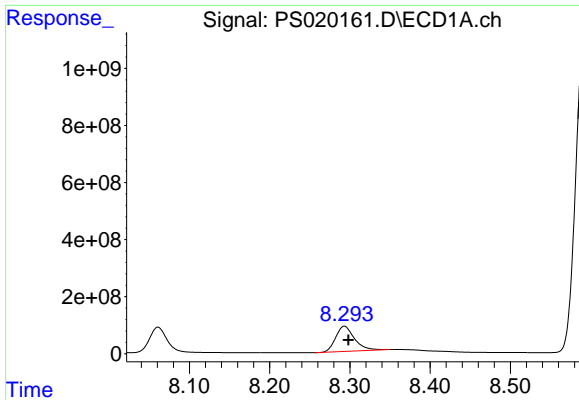
#7 MCPA
 R.T.: 7.227 min
 Delta R.T.: 0.004 min
 Response: 196899400
 Conc: 46.77 ug/ml



#8 DICHLORPROP
 R.T.: 8.061 min
 Delta R.T.: -0.002 min
 Response: 1353522122
 Conc: 472.85 ng/ml



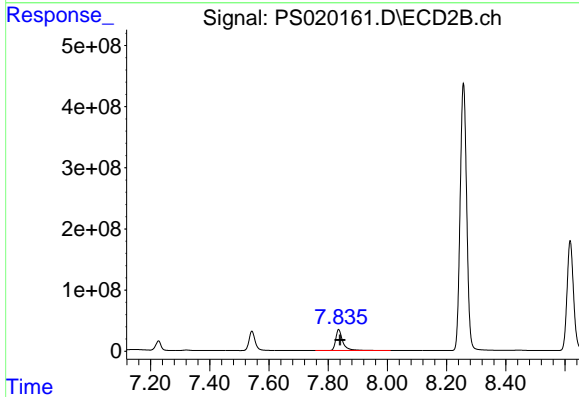
#8 DICHLORPROP
 R.T.: 7.543 min
 Delta R.T.: -0.001 min
 Response: 453268758
 Conc: 484.71 ng/ml



#9 2,4-D

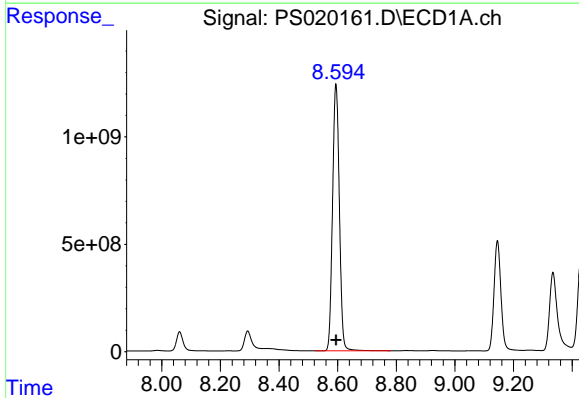
R.T.: 8.293 min
 Delta R.T.: -0.005 min
 Response: 1445702705
 Conc: 480.03 ng/ml

Instrument :
 ECD_S
 ClientSampleId :
 SOIL IDOC 02



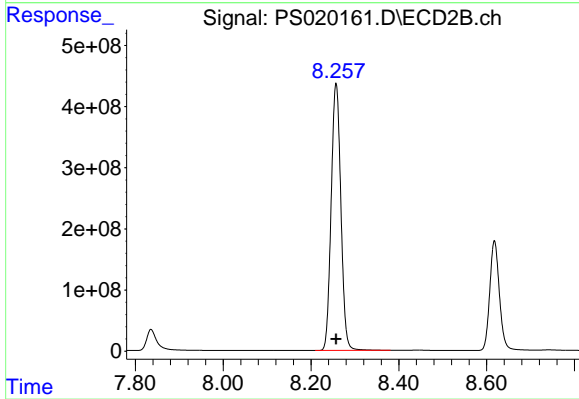
#9 2,4-D

R.T.: 7.835 min
 Delta R.T.: -0.005 min
 Response: 575284944
 Conc: 490.45 ng/ml



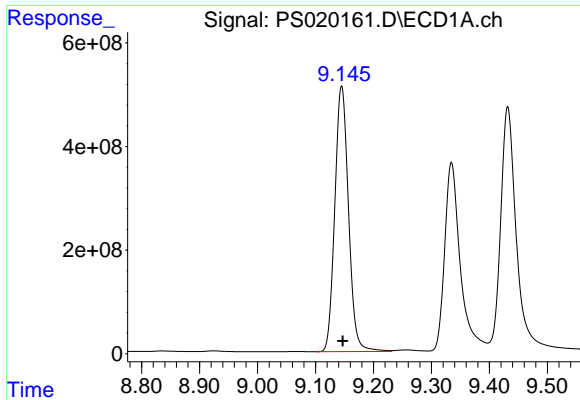
#10 Pentachlorophenol

R.T.: 8.594 min
 Delta R.T.: 0.000 min
 Response: 20031629837
 Conc: 512.09 ng/ml



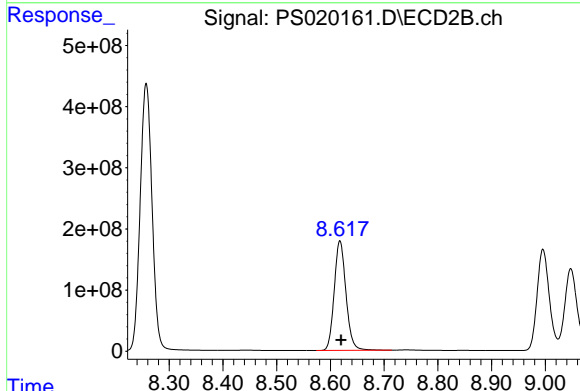
#10 Pentachlorophenol

R.T.: 8.257 min
 Delta R.T.: 0.000 min
 Response: 6690433326
 Conc: 522.85 ng/ml

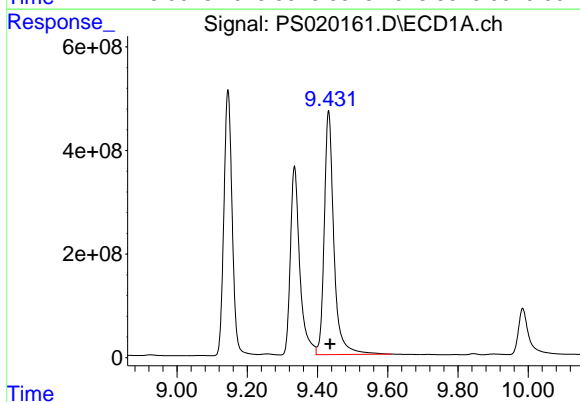


#11 2,4,5-TP (SILVEX)
 R.T.: 9.145 min
 Delta R.T.: -0.002 min
 Response: 8385486818
 Conc: 492.16 ng/ml

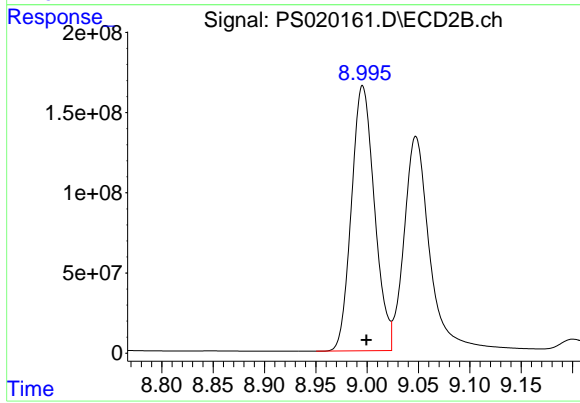
Instrument :
 ECD_S
 ClientSampleId :
 SOIL IDOC 02



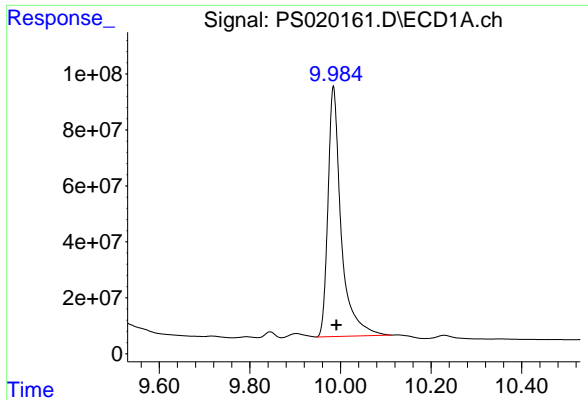
#11 2,4,5-TP (SILVEX)
 R.T.: 8.618 min
 Delta R.T.: -0.002 min
 Response: 2719384617
 Conc: 508.43 ng/ml



#12 2,4,5-T
 R.T.: 9.432 min
 Delta R.T.: -0.004 min
 Response: 8980947349
 Conc: 494.78 ng/ml



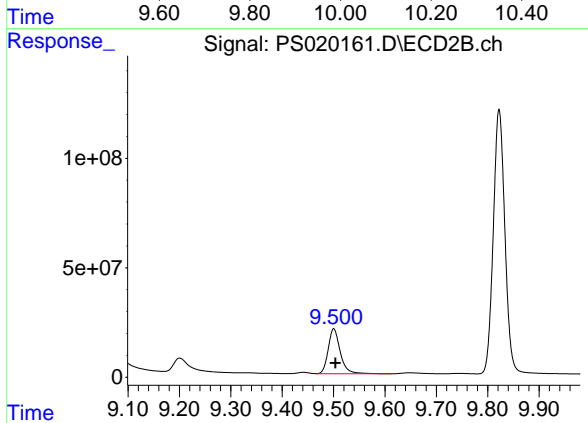
#12 2,4,5-T
 R.T.: 8.996 min
 Delta R.T.: -0.004 min
 Response: 2580286749
 Conc: 506.90 ng/ml



#13 2,4-DB

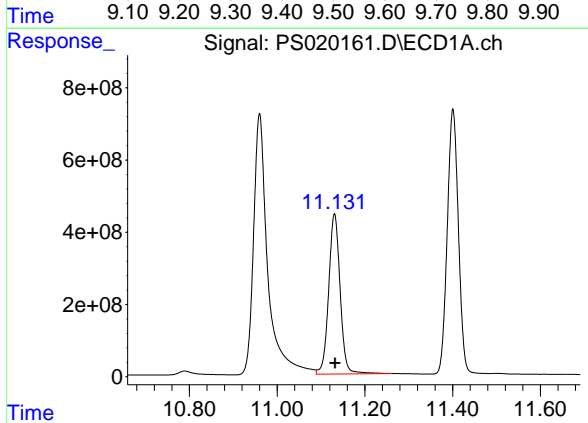
R.T.: 9.984 min
 Delta R.T.: -0.006 min
 Response: 1806613355
 Conc: 495.03 ng/ml

Instrument :
 ECD_S
 ClientSampleId :
 SOIL IDOC 02



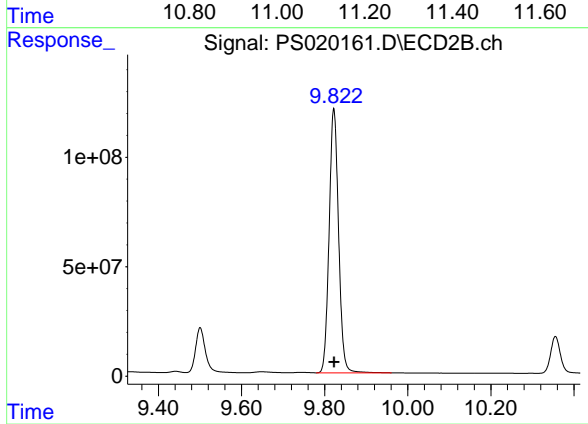
#13 2,4-DB

R.T.: 9.500 min
 Delta R.T.: -0.003 min
 Response: 334025355
 Conc: 491.11 ng/ml



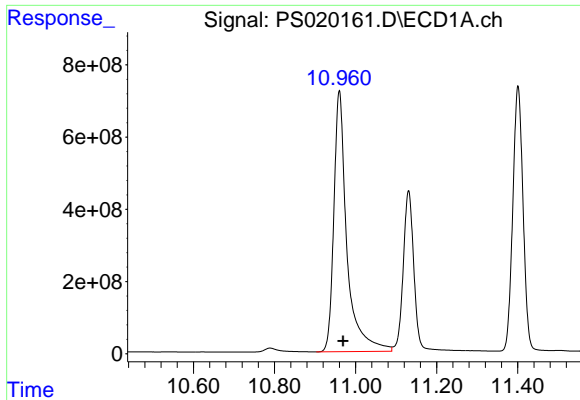
#14 DINOSEB

R.T.: 11.131 min
 Delta R.T.: -0.001 min
 Response: 8027535485
 Conc: 504.58 ng/ml



#14 DINOSEB

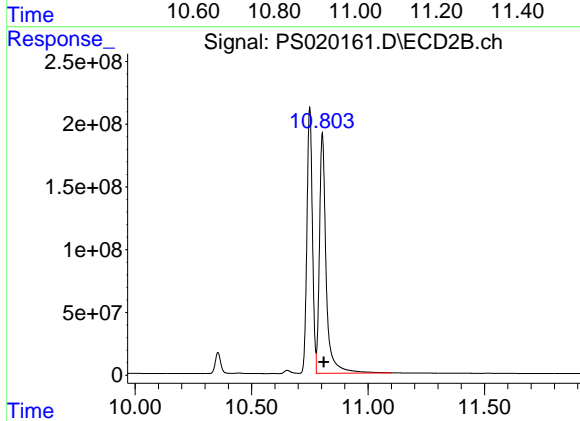
R.T.: 9.822 min
 Delta R.T.: 0.000 min
 Response: 1900445985
 Conc: 500.88 ng/ml



#15 Picloram

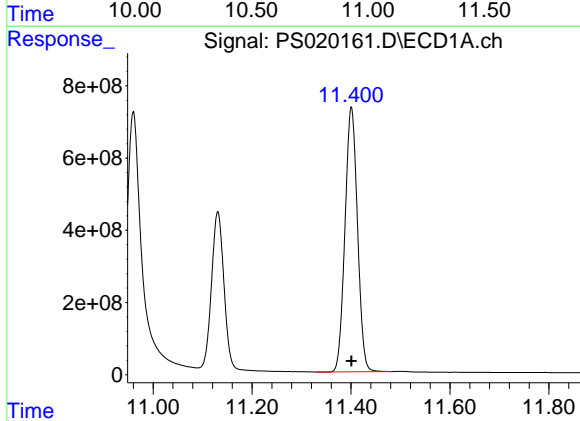
R.T.: 10.960 min
 Delta R.T.: -0.009 min
 Response: 16188389053
 Conc: 511.99 ng/ml

Instrument :
 ECD_S
 ClientSampleId :
 SOIL IDOC 02



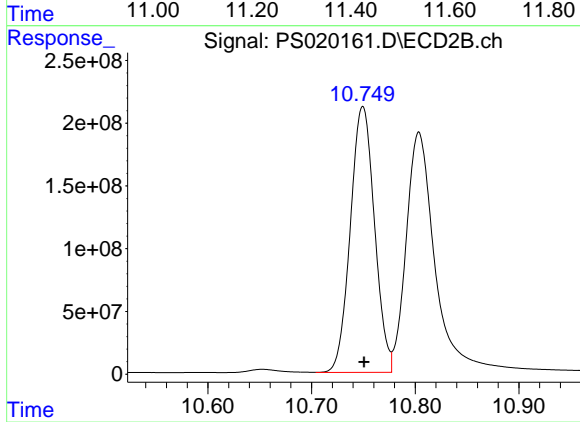
#15 Picloram

R.T.: 10.804 min
 Delta R.T.: -0.007 min
 Response: 3830878178
 Conc: 507.76 ng/ml



#16 DCPA

R.T.: 11.401 min
 Delta R.T.: 0.000 min
 Response: 12830493184
 Conc: 521.89 ng/ml



#16 DCPA

R.T.: 10.749 min
 Delta R.T.: -0.001 min
 Response: 3434470218
 Conc: 517.99 ng/ml