

Data Path : Z:\pestpcbsrv\HPCHEM1\ECD\_S\Data\PS080521\  
 Data File : PS016271.D  
 Signal(s) : Signal #1: ECD1A.ch Signal #2: ECD2B.ch  
 Acq On : 05 Aug 2021 17:45  
 Operator : DD\AJ  
 Sample : M3276-02MS  
 Misc :  
 ALS Vial : 8 Sample Multiplier: 1

Instrument :  
 ECD\_S  
 ClientSampleId :

Integration File signal 1: autoint1.e  
 Integration File signal 2: autoint2.e  
 Quant Time: Aug 05 23:21:22 2021  
 Quant Method : Z:\pestpcbsrv\HPCHEM1\ECD\_S\Method\PS080221.M  
 Quant Title : 8080.M  
 QLast Update : Mon Aug 02 14:10:19 2021  
 Response via : Initial Calibration  
 Integrator: ChemStation

Volume Inj. : 2 µl  
 Signal #1 Phase : Rtx-CLPesticides Signal #2 Phase: Rtx-CLPesticides2  
 Signal #1 Info : 30M x 0.32mm x0.5 Signal #2 Info : 30M x 0.32mm x 0.25µm

	Compound	RT#1	RT#2	Resp#1	Resp#2	ng/ml	ng/ml
-----							
System Monitoring Compounds							
4) S	2,4-DCAA	7.186	6.766	433.9E6	174.0E6	294.916	333.480
Target Compounds							
1) T	Dalapon	3.013	2.519	616.6E6	239.7E6	305.636	344.143
2) T	3,5-DICHL...	6.404	5.957	714.4E6	285.5E6	339.336	361.509
3) T	4-Nitroph...	7.071f	0.000	6508490	0	8.144	N.D. #
5) T	DICAMBA	7.376	6.929	1831.1E6	714.6E6	326.868	327.940
6) T	MCP P	7.542	7.022	137.4E6	61640597	32.464	35.679
7) T	MCPA	7.690	7.232	236.6E6	101.7E6	38.400	37.292
8) T	DICHLORPROP	8.068	7.549	473.7E6	199.6E6	352.005	368.506
9) T	2,4-D	8.297	7.840	599.8E6	261.1E6	396.621	412.079
10) T	Pentachlo...	8.606	8.266	6463.0E6	2492.0E6	329.254	336.390
11) T	2,4,5-TP ...	9.156	8.627	2750.0E6	1307.6E6	380.314	448.153
12) T	2,4,5-T	9.440	9.005	2639.3E6	1040.9E6	346.232	359.351
13) T	2,4-DB	9.993	9.510	332.1E6	135.9E6	228.516	359.112 #
14) T	DINOSEB	11.148	9.836	1562.6E6	556.7E6	296.328	273.231
15) T	Picloram	10.969	10.815	2951.2E6	1175.6E6	295.688	291.949
16) T	DCPA	11.415	10.766	2945.6E6	1363.3E6	278.669	303.285
-----							

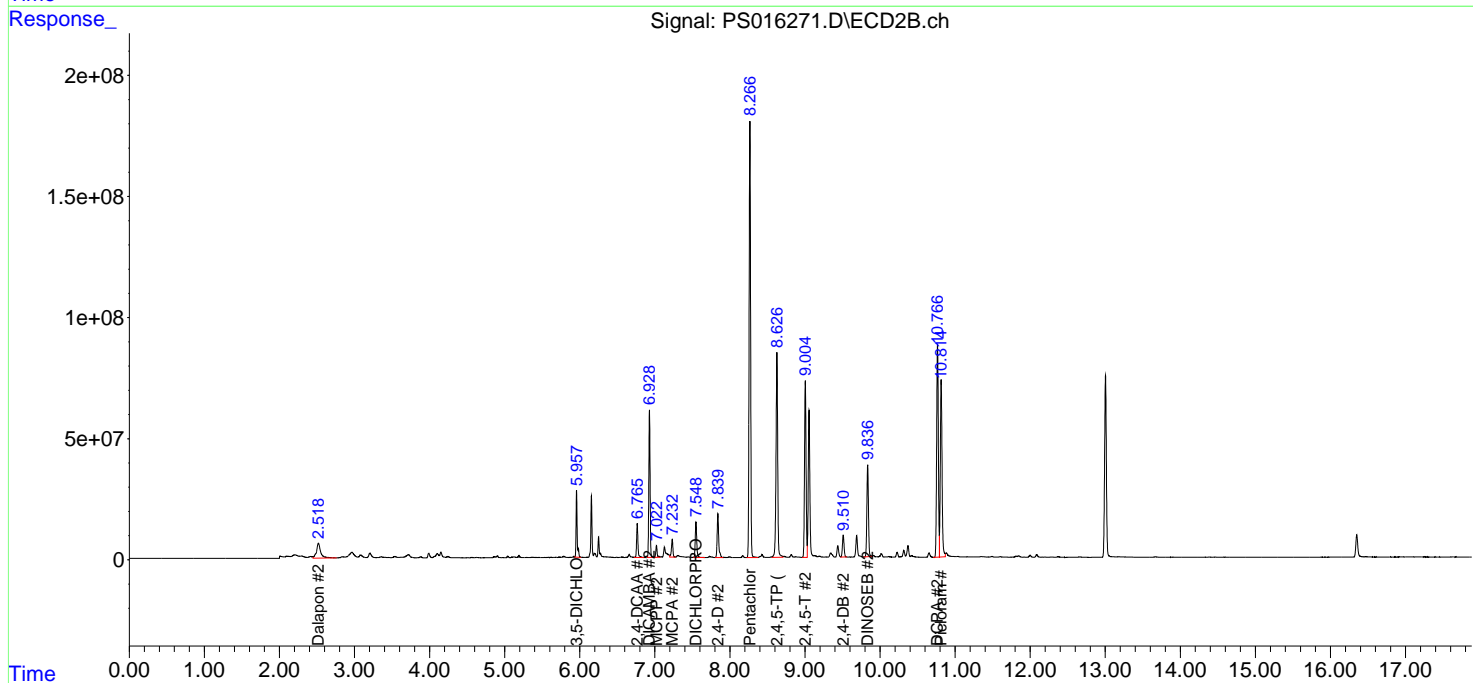
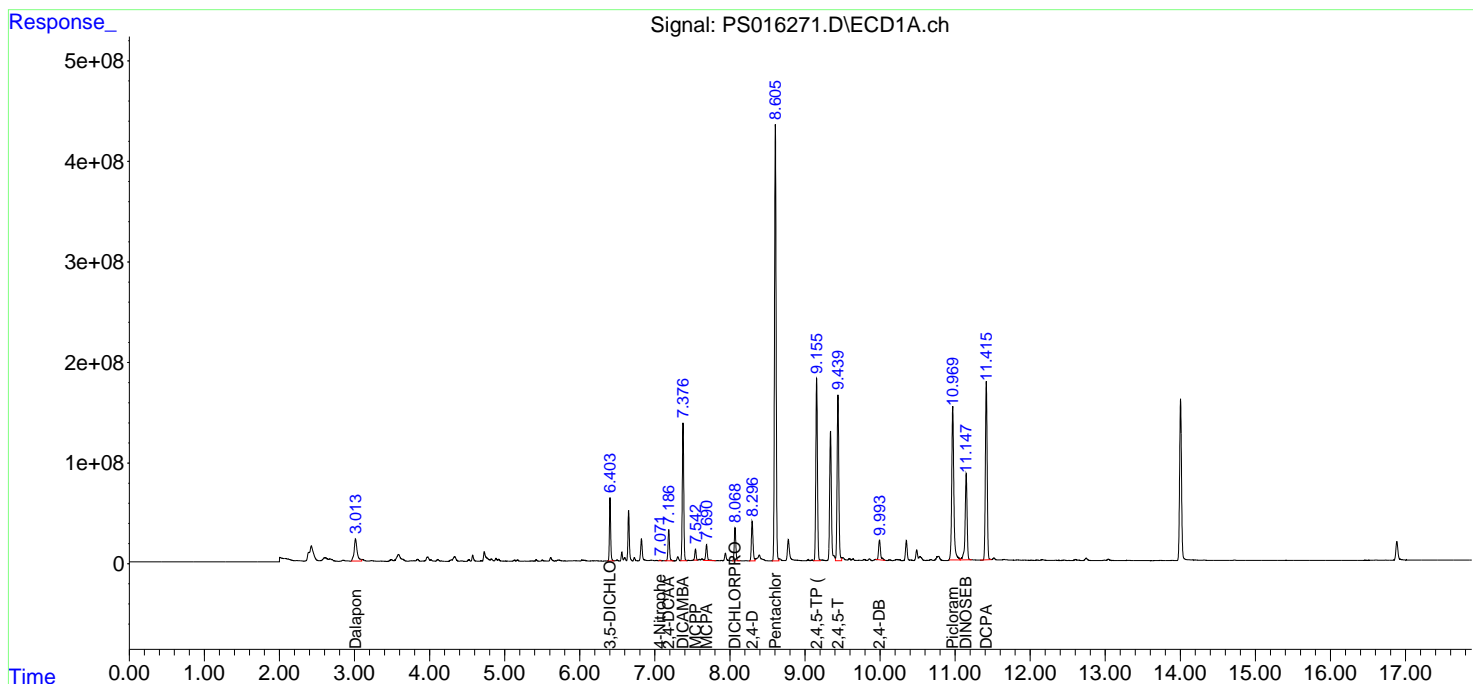
(f)=RT Delta > 1/2 Window (#)=Amounts differ by > 25% (m)=manual int.

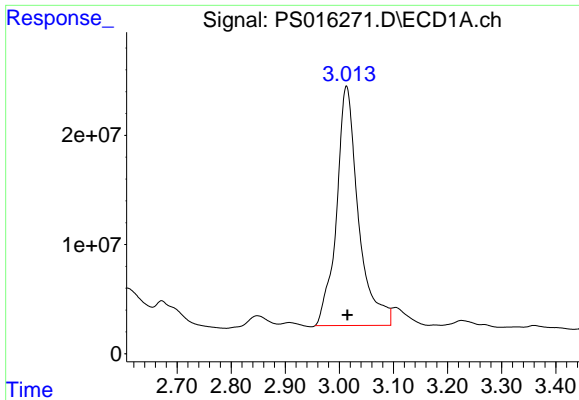
Data Path : Z:\pestpcbsrv\HPCHEM1\ECD\_S\Data\PS080521\  
 Data File : PS016271.D  
 Signal(s) : Signal #1: ECD1A.ch Signal #2: ECD2B.ch  
 Acq On : 05 Aug 2021 17:45  
 Operator : DD\AJ  
 Sample : M3276-02MS  
 Misc :  
 ALS Vial : 8 Sample Multiplier: 1

Instrument :  
 ECD\_S  
 ClientSampled :

Integration File signal 1: autoint1.e  
 Integration File signal 2: autoint2.e  
 Quant Time: Aug 05 23:21:22 2021  
 Quant Method : Z:\pestpcbsrv\HPCHEM1\ECD\_S\Method\PS080221.M  
 Quant Title : 8080.M  
 QLast Update : Mon Aug 02 14:10:19 2021  
 Response via : Initial Calibration  
 Integrator: ChemStation

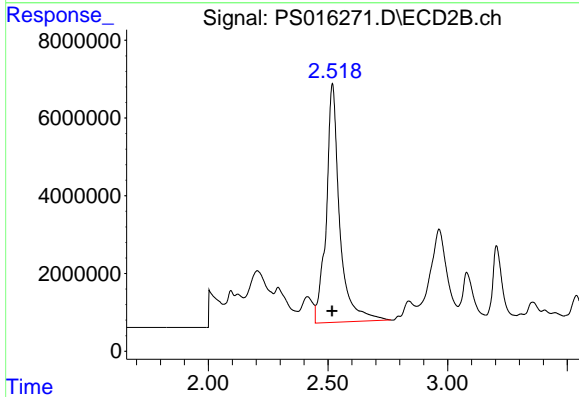
Volume Inj. : 2 µl  
 Signal #1 Phase : Rtx-CLPesticides Signal #2 Phase: Rtx-CLPesticides2  
 Signal #1 Info : 30M x 0.32mm x0.5 Signal #2 Info : 30M x 0.32mm x 0.25µm



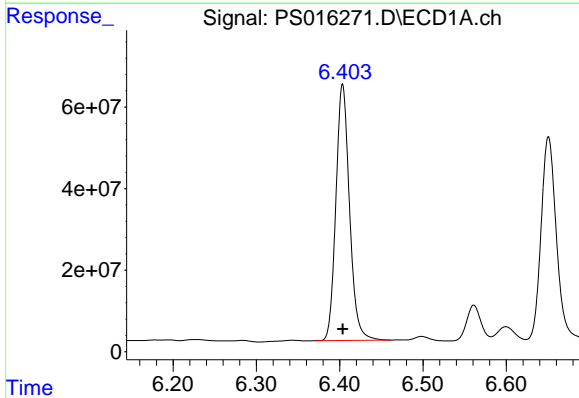


#1 Dalapon  
 R.T.: 3.013 min  
 Delta R.T.: -0.002 min  
 Response: 616628489  
 Conc: 305.64 ng/ml

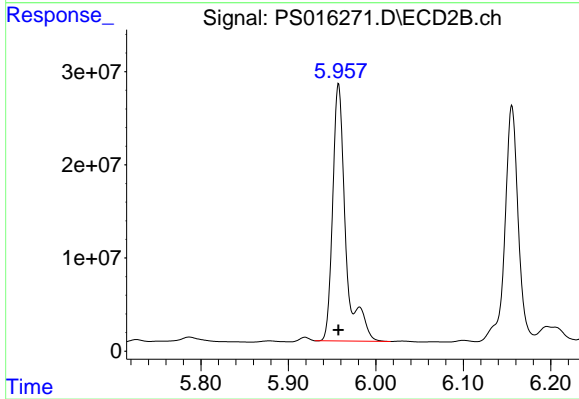
Instrument :  
 ECD\_S  
 ClientSampleId :



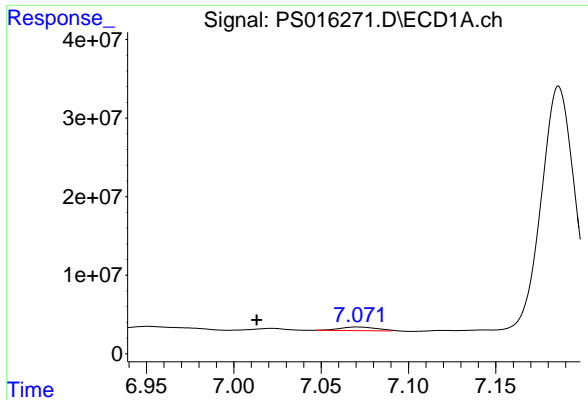
#1 Dalapon  
 R.T.: 2.519 min  
 Delta R.T.: 0.001 min  
 Response: 239744386  
 Conc: 344.14 ng/ml



#2 3,5-DICHLOROBENZOIC ACID  
 R.T.: 6.404 min  
 Delta R.T.: 0.000 min  
 Response: 714390288  
 Conc: 339.34 ng/ml



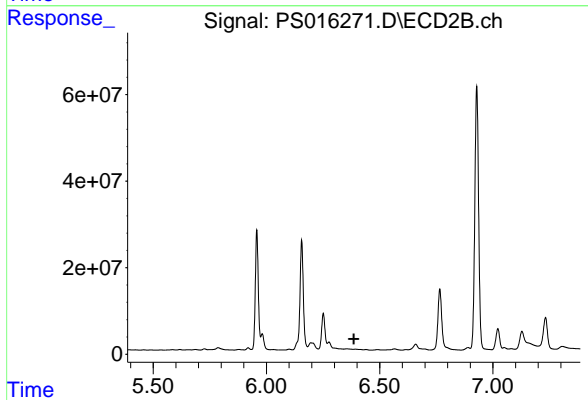
#2 3,5-DICHLOROBENZOIC ACID  
 R.T.: 5.957 min  
 Delta R.T.: 0.000 min  
 Response: 285467459  
 Conc: 361.51 ng/ml



#3 4-Nitrophenol

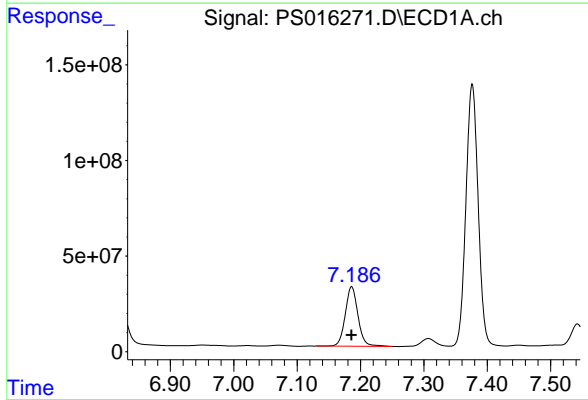
R.T.: 7.071 min  
 Delta R.T.: 0.058 min  
 Response: 6508490  
 Conc: 8.14 ng/ml

Instrument :  
 ECD\_S  
 ClientSampled :



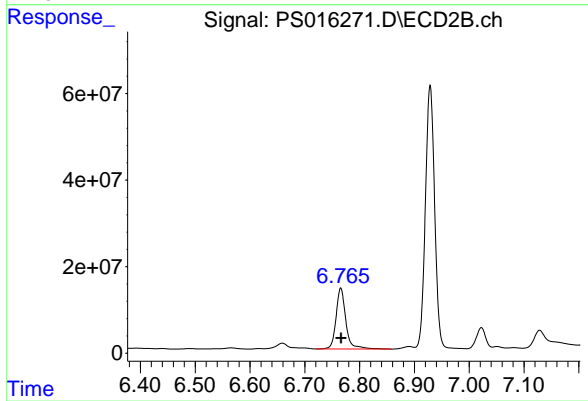
#3 4-Nitrophenol

R.T.: 0.000 min  
 Exp R.T. : 6.386 min  
 Response: 0  
 Conc: N.D.



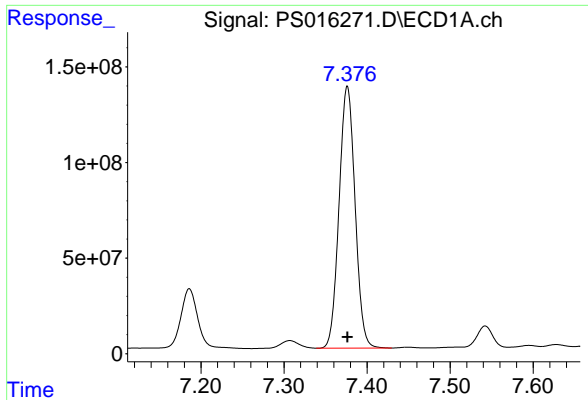
#4 2,4-DCAA

R.T.: 7.186 min  
 Delta R.T.: 0.000 min  
 Response: 433852685  
 Conc: 294.92 ng/ml



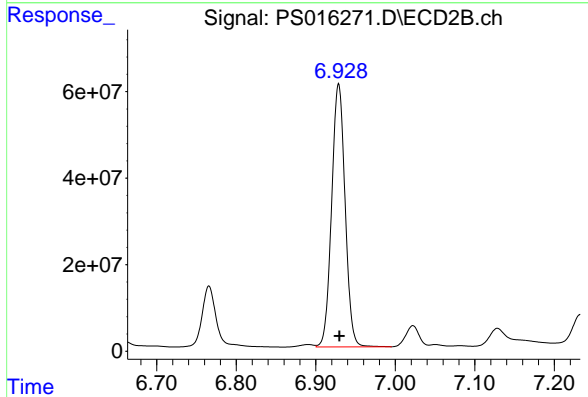
#4 2,4-DCAA

R.T.: 6.766 min  
 Delta R.T.: 0.000 min  
 Response: 173951245  
 Conc: 333.48 ng/ml

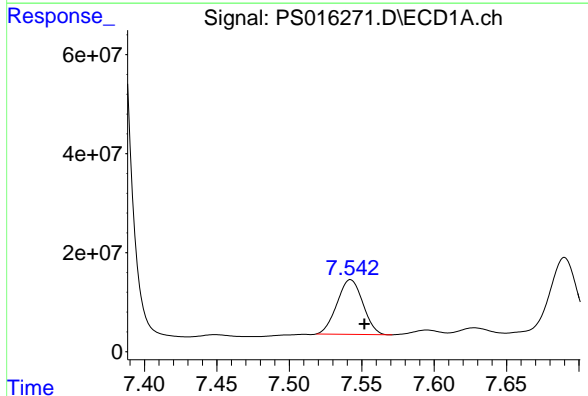


#5 DICAMBA  
 R.T.: 7.376 min  
 Delta R.T.: 0.000 min  
 Response: 1831128485  
 Conc: 326.87 ng/ml

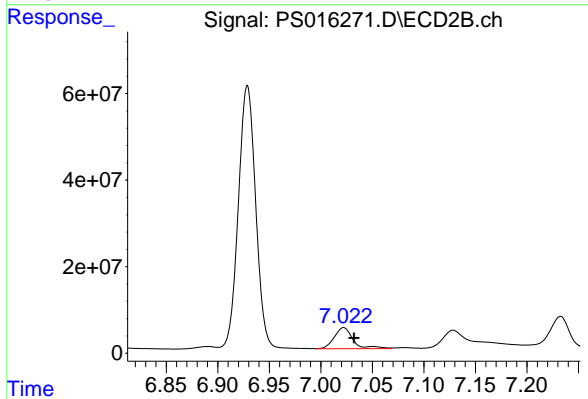
Instrument :  
 ECD\_S  
 ClientSampleId :



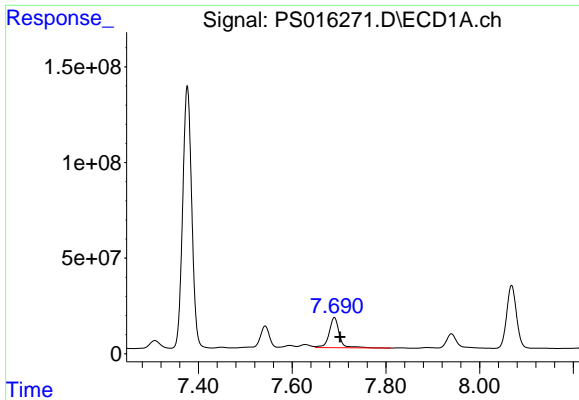
#5 DICAMBA  
 R.T.: 6.929 min  
 Delta R.T.: 0.000 min  
 Response: 714631821  
 Conc: 327.94 ng/ml



#6 MCP  
 R.T.: 7.542 min  
 Delta R.T.: -0.009 min  
 Response: 137378885  
 Conc: 32.46 ug/ml

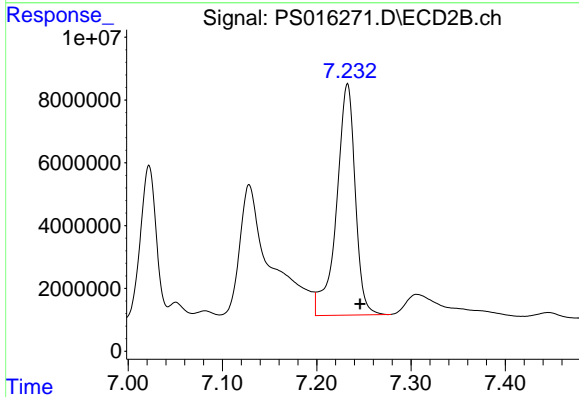


#6 MCP  
 R.T.: 7.022 min  
 Delta R.T.: -0.010 min  
 Response: 61640597  
 Conc: 35.68 ug/ml

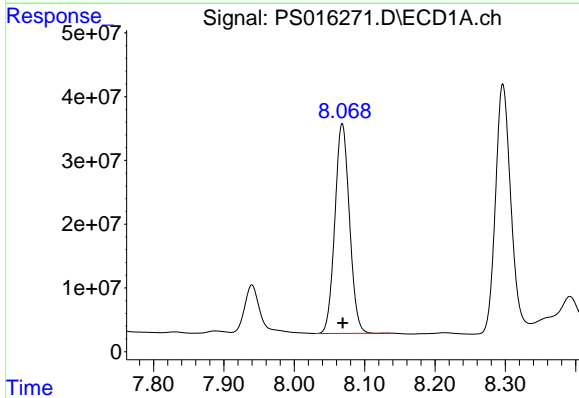


#7 MCPA  
R.T.: 7.690 min  
Delta R.T.: -0.012 min  
Response: 236555152  
Conc: 38.40 ug/ml

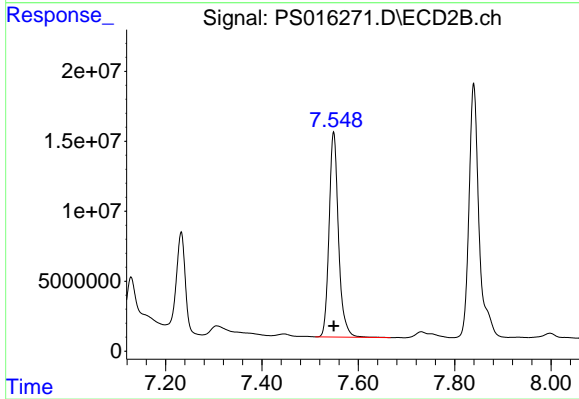
Instrument :  
ECD\_S  
ClientSampleId :



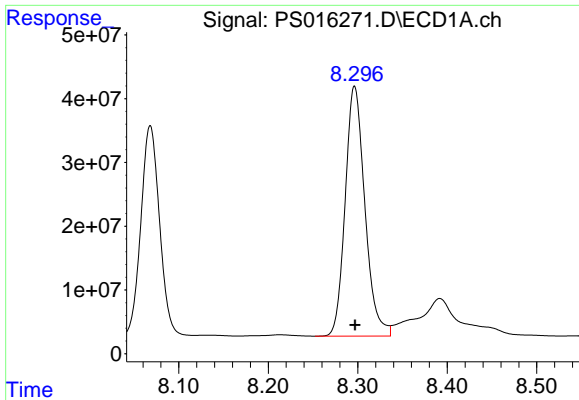
#7 MCPA  
R.T.: 7.232 min  
Delta R.T.: -0.013 min  
Response: 101654155  
Conc: 37.29 ug/ml



#8 DICHLORPROP  
R.T.: 8.068 min  
Delta R.T.: 0.000 min  
Response: 473714433  
Conc: 352.00 ng/ml

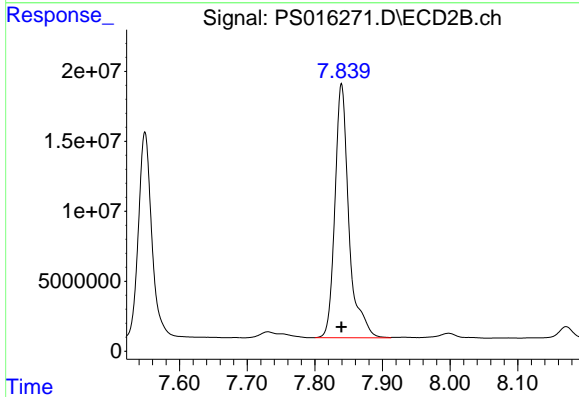


#8 DICHLORPROP  
R.T.: 7.549 min  
Delta R.T.: 0.000 min  
Response: 199641414  
Conc: 368.51 ng/ml

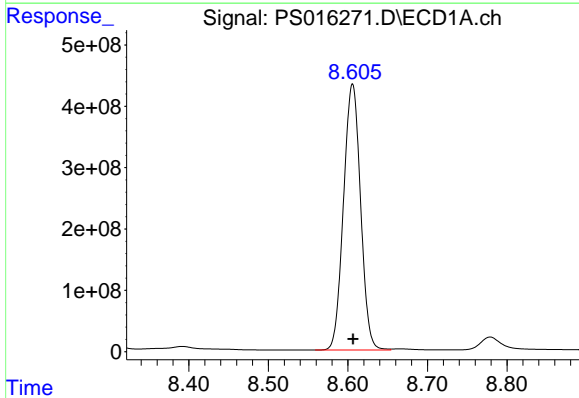


#9 2,4-D  
 R.T.: 8.297 min  
 Delta R.T.: 0.000 min  
 Response: 599765709  
 Conc: 396.62 ng/ml

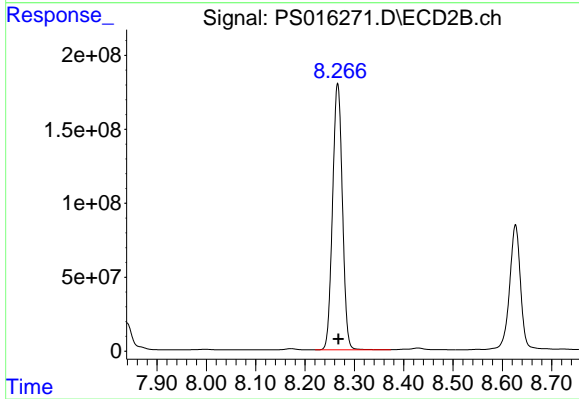
Instrument :  
 ECD\_S  
 ClientSampled :



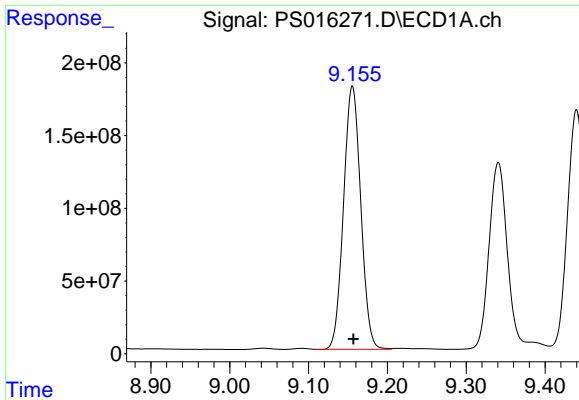
#9 2,4-D  
 R.T.: 7.840 min  
 Delta R.T.: 0.000 min  
 Response: 261082911  
 Conc: 412.08 ng/ml



#10 Pentachlorophenol  
 R.T.: 8.606 min  
 Delta R.T.: 0.000 min  
 Response: 6462982268  
 Conc: 329.25 ng/ml

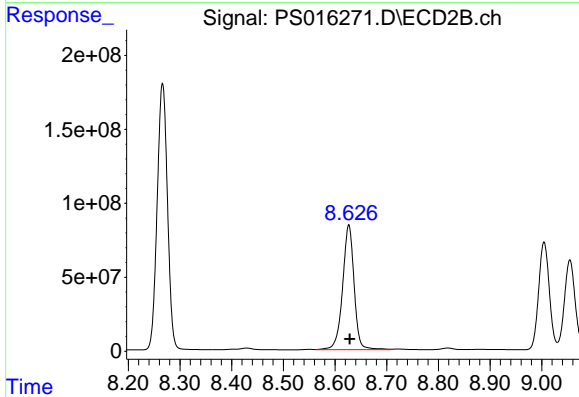


#10 Pentachlorophenol  
 R.T.: 8.266 min  
 Delta R.T.: -0.001 min  
 Response: 2492030451  
 Conc: 336.39 ng/ml

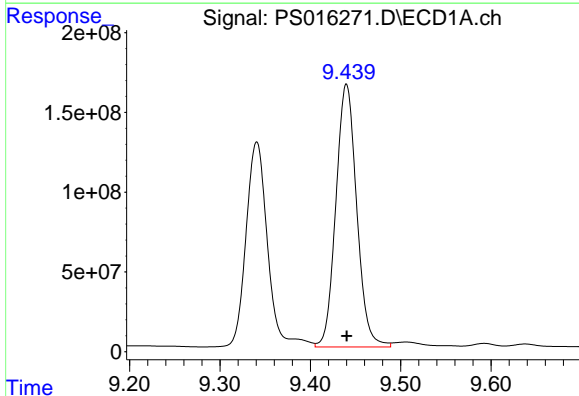


#11 2,4,5-TP (SILVEX)  
 R.T.: 9.156 min  
 Delta R.T.: -0.001 min  
 Response: 2749976548  
 Conc: 380.31 ng/ml

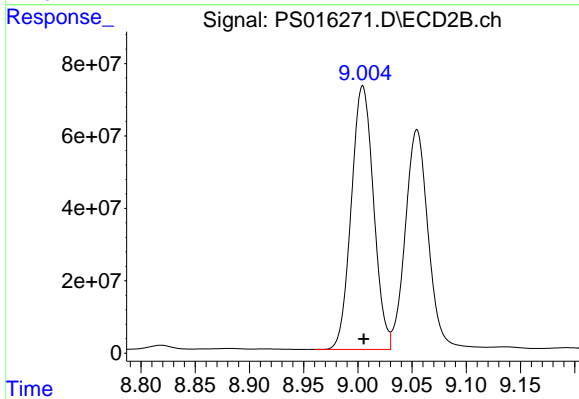
Instrument :  
 ECD\_S  
 ClientSampled :



#11 2,4,5-TP (SILVEX)  
 R.T.: 8.627 min  
 Delta R.T.: -0.002 min  
 Response: 1307639791  
 Conc: 448.15 ng/ml

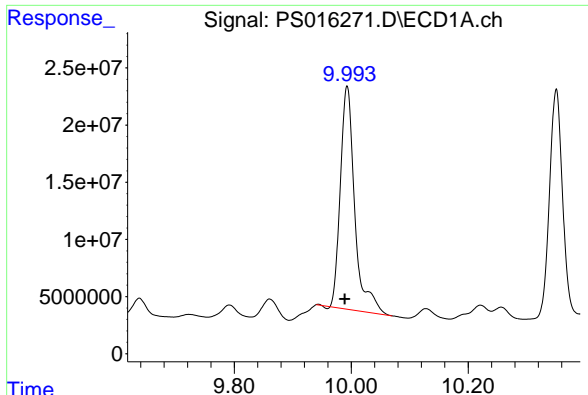


#12 2,4,5-T  
 R.T.: 9.440 min  
 Delta R.T.: 0.000 min  
 Response: 2639301888  
 Conc: 346.23 ng/ml



#12 2,4,5-T  
 R.T.: 9.005 min  
 Delta R.T.: 0.000 min  
 Response: 1040904965  
 Conc: 359.35 ng/ml

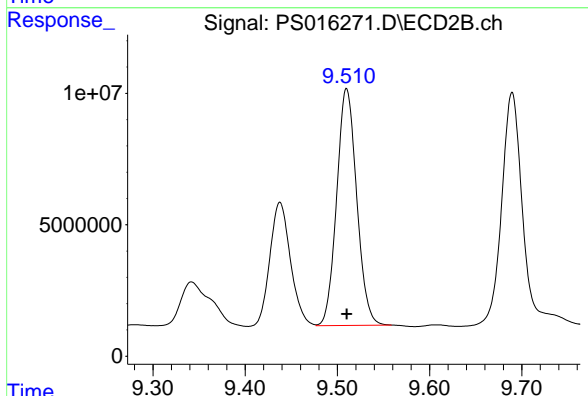




#13 2,4-DB

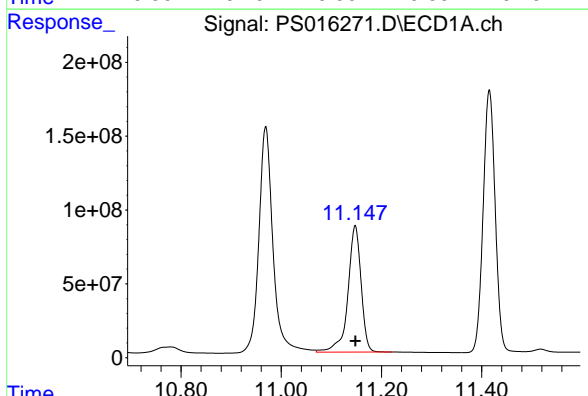
R.T.: 9.993 min  
 Delta R.T.: 0.004 min  
 Response: 332133232  
 Conc: 228.52 ng/ml

Instrument :  
 ECD\_S  
 ClientSampled :



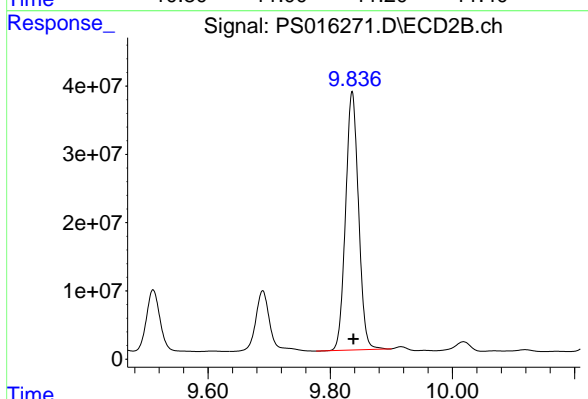
#13 2,4-DB

R.T.: 9.510 min  
 Delta R.T.: 0.000 min  
 Response: 135852733  
 Conc: 359.11 ng/ml



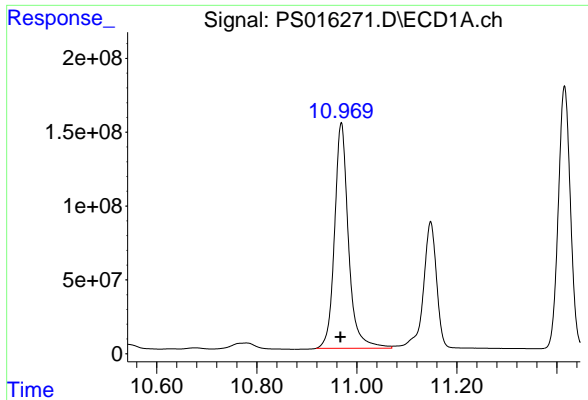
#14 DINOSEB

R.T.: 11.148 min  
 Delta R.T.: 0.000 min  
 Response: 1562608963  
 Conc: 296.33 ng/ml



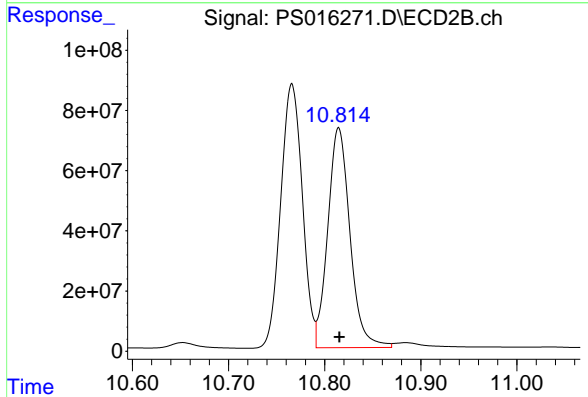
#14 DINOSEB

R.T.: 9.836 min  
 Delta R.T.: -0.002 min  
 Response: 556658662  
 Conc: 273.23 ng/ml

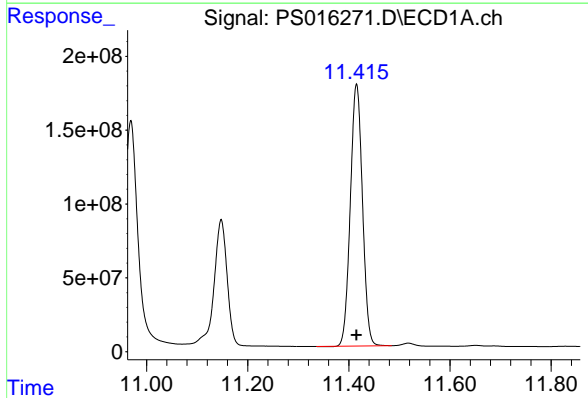


#15 Picloram  
 R.T.: 10.969 min  
 Delta R.T.: 0.002 min  
 Response: 2951211713  
 Conc: 295.69 ng/ml

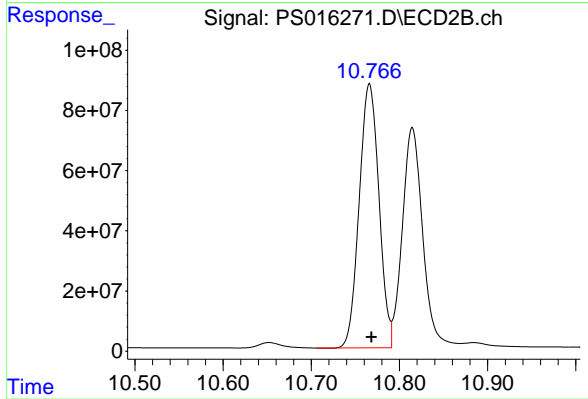
Instrument :  
 ECD\_S  
 ClientSampleId :



#15 Picloram  
 R.T.: 10.815 min  
 Delta R.T.: 0.000 min  
 Response: 1175573119  
 Conc: 291.95 ng/ml



#16 DCPA  
 R.T.: 11.415 min  
 Delta R.T.: 0.000 min  
 Response: 2945568869  
 Conc: 278.67 ng/ml



#16 DCPA  
 R.T.: 10.766 min  
 Delta R.T.: -0.002 min  
 Response: 1363299554  
 Conc: 303.29 ng/ml