

Data Path : Z:\pestpcbsrv\HPCHEM1\ECD_S\Data\PS080524\
 Data File : PS027308.D
 Signal(s) : Signal #1: ECD1A.ch Signal #2: ECD2B.ch
 Acq On : 05 Aug 2024 23:00
 Operator : AR\AJ
 Sample : HSTDCCC750
 Misc :
 ALS Vial : 5 Sample Multiplier: 1

Instrument :
 ECD_S
ClientSampleId :
 HSTDCCC750

Integration File signal 1: autoint1.e
 Integration File signal 2: autoint2.e
 Quant Time: Aug 06 08:19:10 2024
 Quant Method : Z:\pestpcbsrv\HPCHEM1\ECD_S\Method\PS080524.M
 Quant Title : 8080.M
 QLast Update : Tue Aug 06 08:10:22 2024
 Response via : Initial Calibration
 Integrator: ChemStation

Volume Inj. : 1 µl
 Signal #1 Phase : ZB-MR1 Signal #2 Phase: ZB-MR2
 Signal #1 Info : 30M x 0.32mm x0.5 Signal #2 Info : 30M x 0.32mm x 0.25µm

Compound	RT#1	RT#2	Resp#1	Resp#2	ng/ml	ng/ml

System Monitoring Compounds						
4) S 2,4-DCAA	7.185	7.745	2045.0E6	1338.1E6	813.064	719.478
Target Compounds						
1) T Dalapon	2.606	2.694	2172.1E6	2200.8E6	664.641	659.583
2) T 3,5-DICHL...	6.364	6.699	2657.7E6	1838.3E6	667.469	670.778
3) T 4-Nitroph...	6.983	7.273	995.4E6	837.0E6	658.415	668.935
5) T DICAMBA	7.367	7.944	7513.8E6	5941.1E6	680.811	689.736
6) T MCPP	7.546	8.046	498.1E6	399.3E6	65.455	70.127
7) T MCPA	7.692	8.289	662.5E6	525.3E6	68.382	69.545
8) T DICHLORPROP	8.062	8.657	1780.0E6	1428.0E6	672.728	683.098
9) T 2,4-D	8.288	8.986	1923.1E6	1590.1E6	674.514	682.521
10) T Pentachlo...	8.580	9.513	27895.9E6	22217.3E6	705.703	698.062
11) T 2,4,5-TP ...	9.152	9.887	10522.7E6	8844.7E6	693.805	692.555
12) T 2,4,5-T	9.441	10.306	10112.7E6	8735.4E6	692.379	692.783
13) T 2,4-DB	10.009	10.870	1405.9E6	1091.7E6	685.533	690.639
14) T DINOSEB	11.200	11.249	7803.3E6	6010.4E6	700.144	705.678
15) T Picloram	11.016	12.342	13340.7E6	12719.6E6	691.929	705.035
16) T DCPA	11.497	12.290	12669.4E6	9744.0E6	701.335	700.682

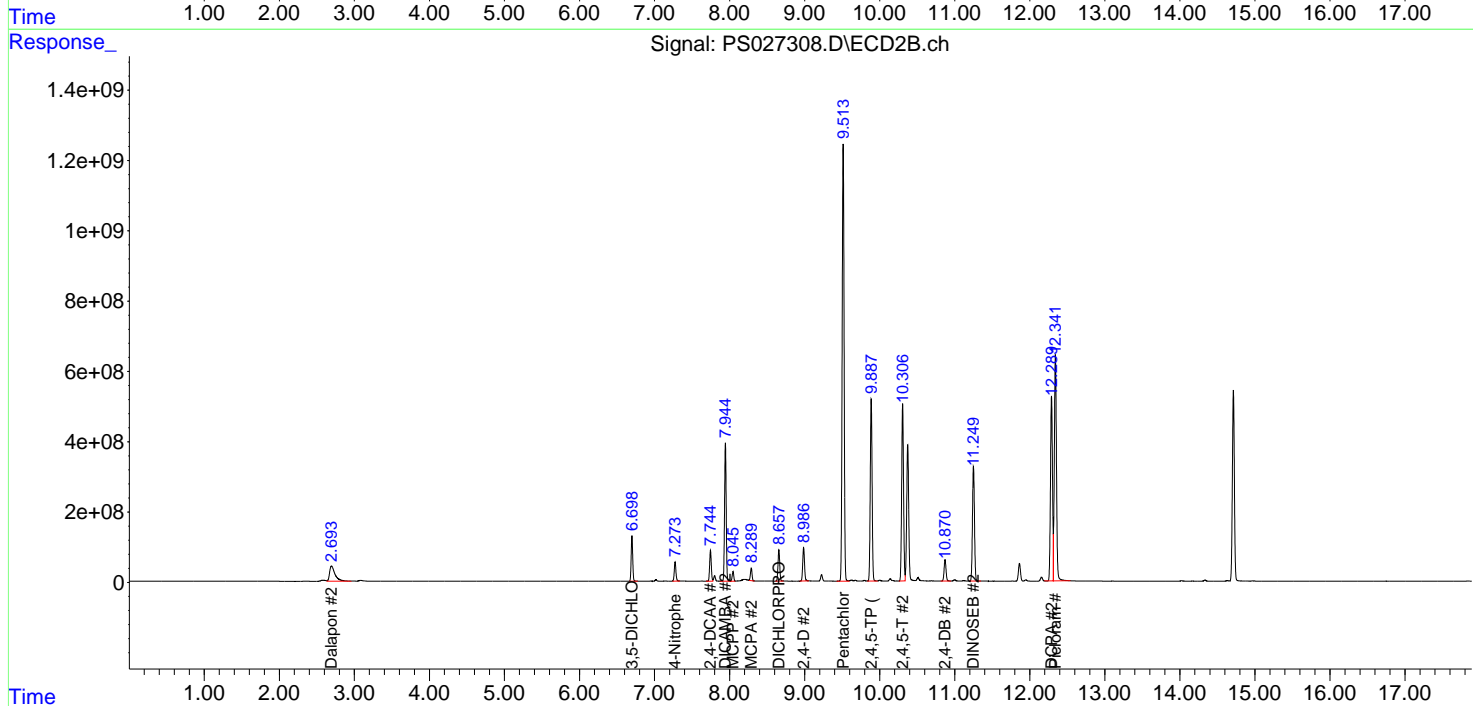
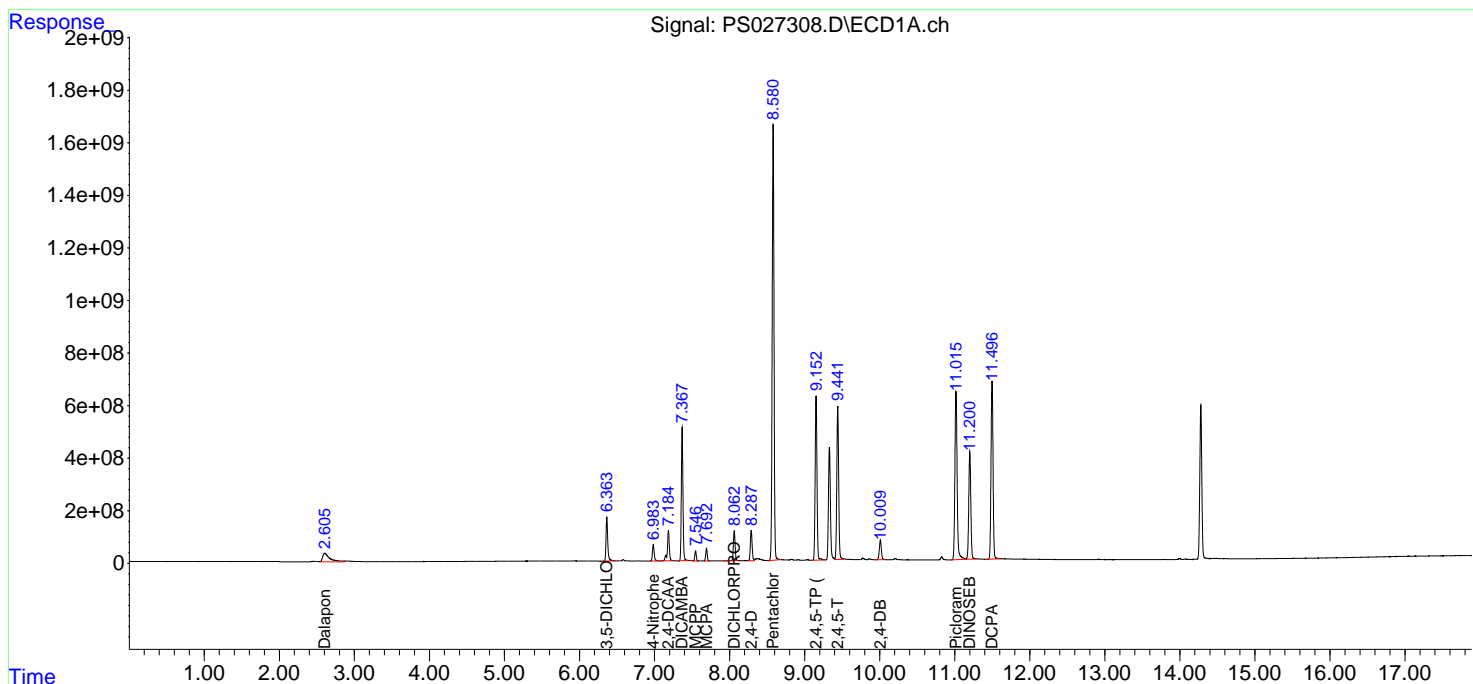
(f)=RT Delta > 1/2 Window (#)=Amounts differ by > 25% (m)=manual int.

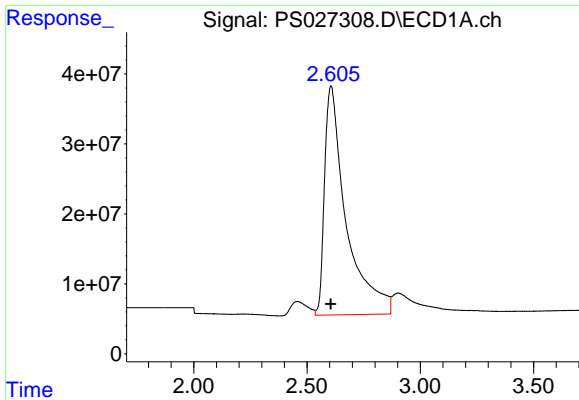
Data Path : Z:\pestpcbsrv\HPCHEM1\ECD_S\Data\PS080524\
 Data File : PS027308.D
 Signal(s) : Signal #1: ECD1A.ch Signal #2: ECD2B.ch
 Acq On : 05 Aug 2024 23:00
 Operator : AR\AJ
 Sample : HSTDCCC750
 Misc :
 ALS Vial : 5 Sample Multiplier: 1

Instrument :
 ECD_S
 ClientSampleId :
 HSTDCCC750

Integration File signal 1: autoint1.e
 Integration File signal 2: autoint2.e
 Quant Time: Aug 06 08:19:10 2024
 Quant Method : Z:\pestpcbsrv\HPCHEM1\ECD_S\Method\PS080524.M
 Quant Title : 8080.M
 QLast Update : Tue Aug 06 08:10:22 2024
 Response via : Initial Calibration
 Integrator: ChemStation

Volume Inj. : 1 µl
 Signal #1 Phase : ZB-MR1 Signal #2 Phase: ZB-MR2
 Signal #1 Info : 30M x 0.32mm x0.5 Signal #2 Info : 30M x 0.32mm x 0.25µm

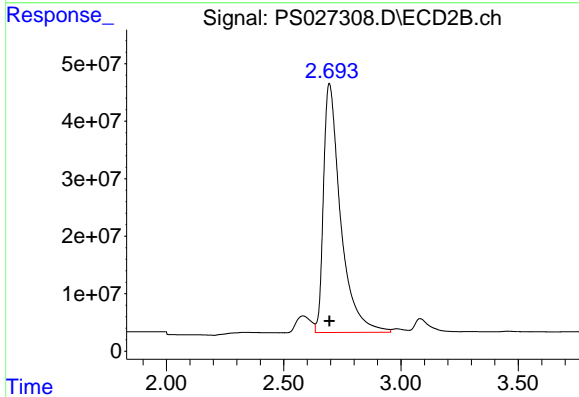




#1 Dalapon

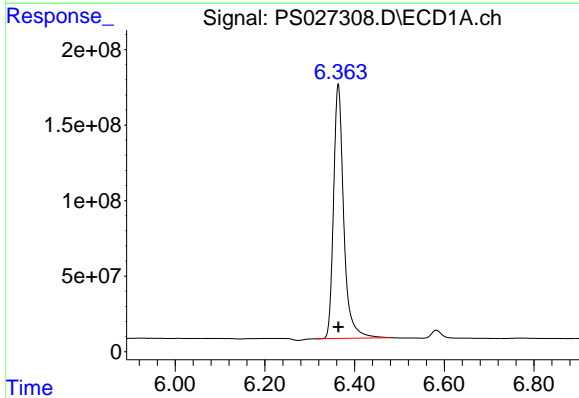
R.T.: 2.606 min
 Delta R.T.: 0.000 min
 Response: 2172062019
 Conc: 664.64 ng/ml

Instrument :
 ECD_S
 ClientSampleId :
 HSTDCCC750



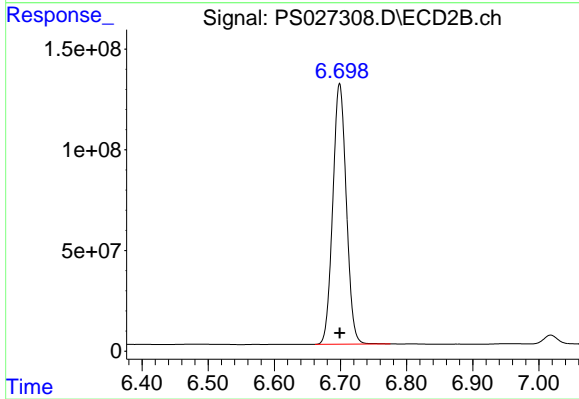
#1 Dalapon

R.T.: 2.694 min
 Delta R.T.: 0.000 min
 Response: 2200821219
 Conc: 659.58 ng/ml



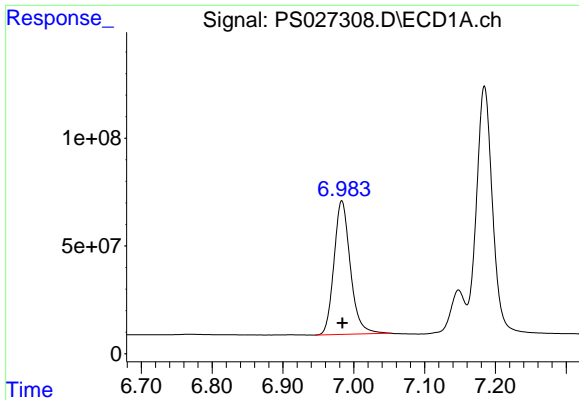
#2 3,5-DICHLOROBENZOIC ACID

R.T.: 6.364 min
 Delta R.T.: 0.000 min
 Response: 2657681527
 Conc: 667.47 ng/ml



#2 3,5-DICHLOROBENZOIC ACID

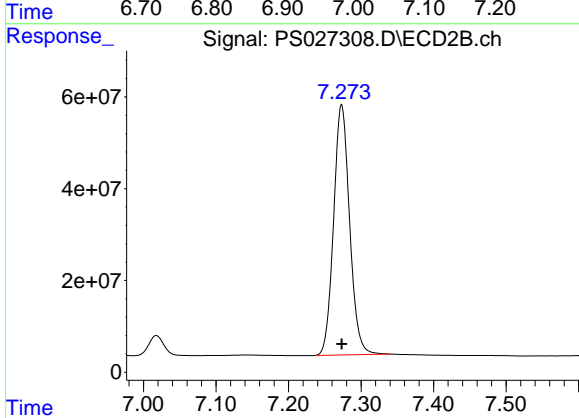
R.T.: 6.699 min
 Delta R.T.: 0.000 min
 Response: 1838282945
 Conc: 670.78 ng/ml



#3 4-Nitrophenol

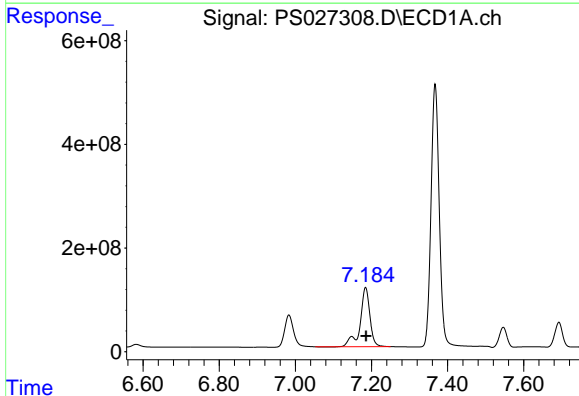
R.T.: 6.983 min
 Delta R.T.: 0.000 min
 Response: 995390543
 Conc: 658.41 ng/ml

Instrument :
 ECD_S
 ClientSampleId :
 HSTDCCC750



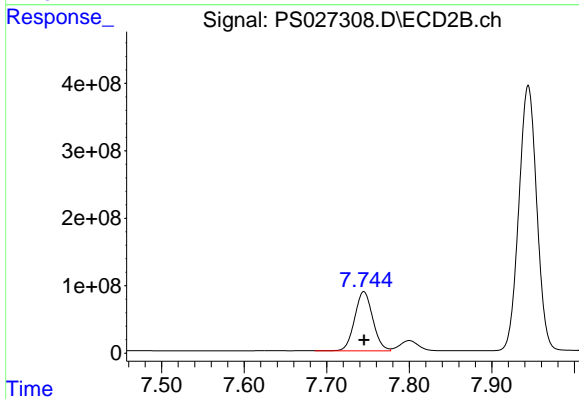
#3 4-Nitrophenol

R.T.: 7.273 min
 Delta R.T.: 0.000 min
 Response: 836959838
 Conc: 668.94 ng/ml



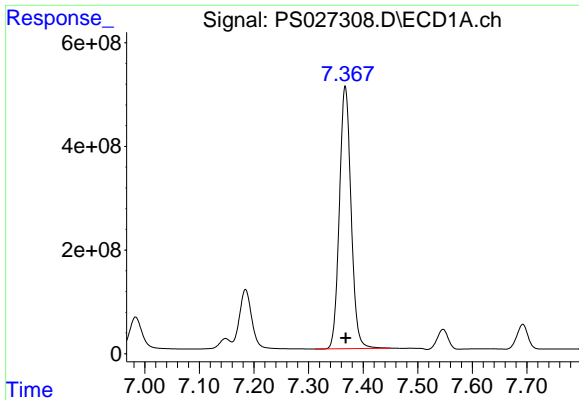
#4 2,4-DCAA

R.T.: 7.185 min
 Delta R.T.: 0.000 min
 Response: 2044951687
 Conc: 813.06 ng/ml



#4 2,4-DCAA

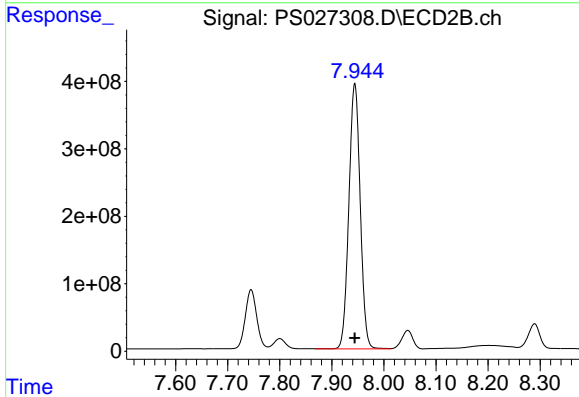
R.T.: 7.745 min
 Delta R.T.: 0.000 min
 Response: 1338063737
 Conc: 719.48 ng/ml



#5 DICAMBA

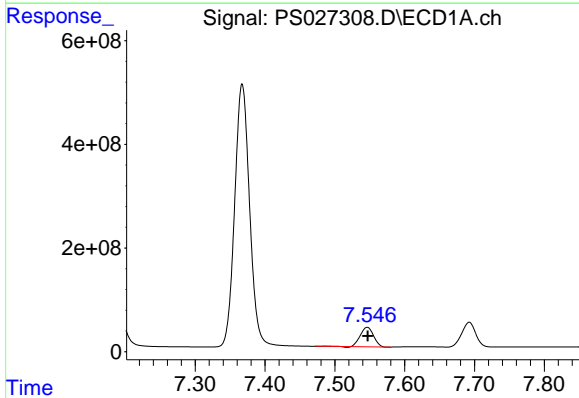
R.T.: 7.367 min
 Delta R.T.: 0.000 min
 Response: 7513798509
 Conc: 680.81 ng/ml

Instrument :
 ECD_S
 ClientSampleId :
 HSTDCCC750



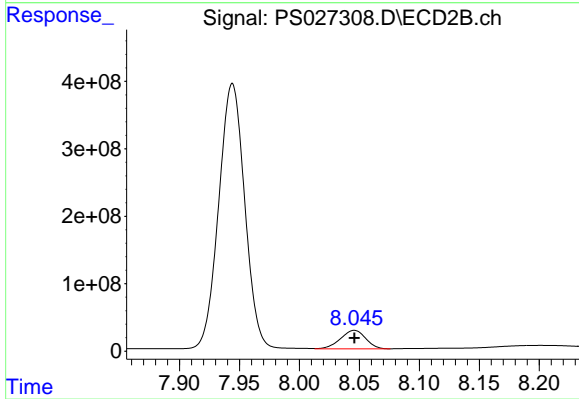
#5 DICAMBA

R.T.: 7.944 min
 Delta R.T.: 0.000 min
 Response: 5941099857
 Conc: 689.74 ng/ml



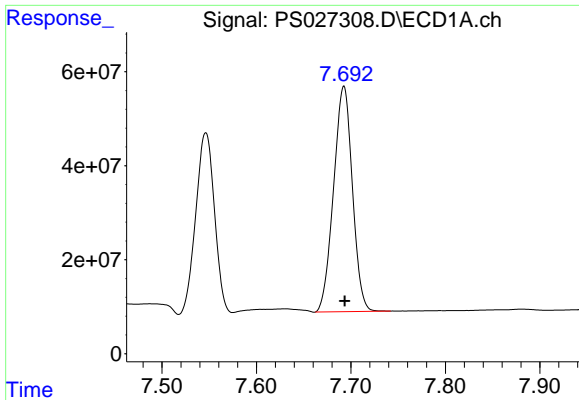
#6 MCP

R.T.: 7.546 min
 Delta R.T.: 0.000 min
 Response: 498105418
 Conc: 65.46 ug/ml



#6 MCP

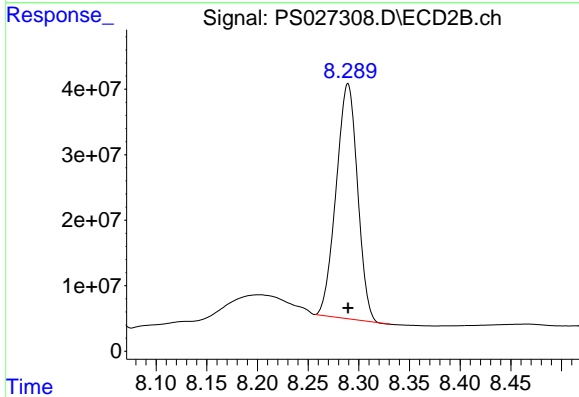
R.T.: 8.046 min
 Delta R.T.: 0.000 min
 Response: 399333154
 Conc: 70.13 ug/ml



#7 MCPA

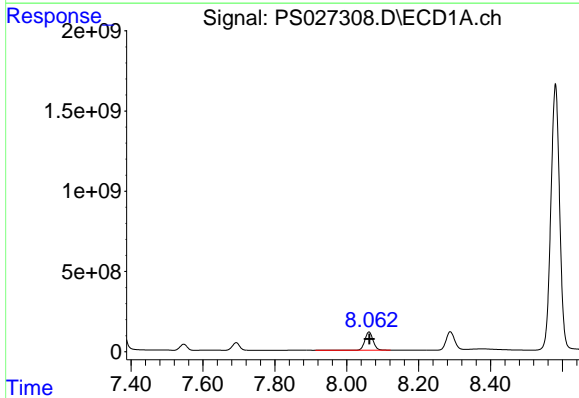
R.T.: 7.692 min
 Delta R.T.: -0.001 min
 Response: 662502156
 Conc: 68.38 ug/ml

Instrument :
 ECD_S
 ClientSampleId :
 HSTDCCC750



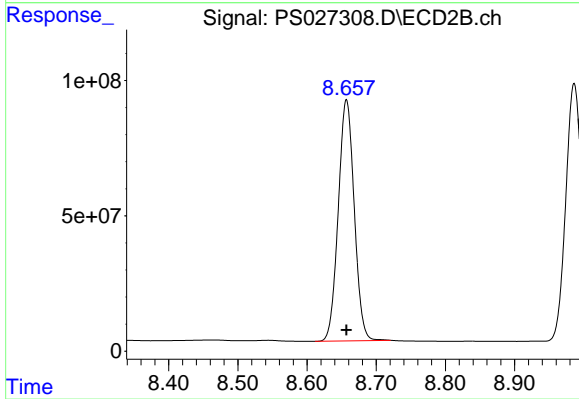
#7 MCPA

R.T.: 8.289 min
 Delta R.T.: 0.000 min
 Response: 525342611
 Conc: 69.54 ug/ml



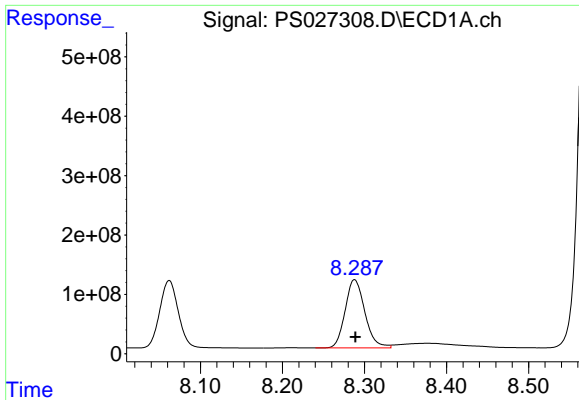
#8 DICHLORPROP

R.T.: 8.062 min
 Delta R.T.: -0.001 min
 Response: 1779965934
 Conc: 672.73 ng/ml



#8 DICHLORPROP

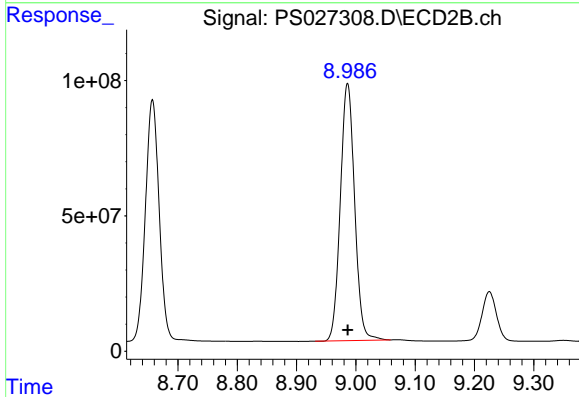
R.T.: 8.657 min
 Delta R.T.: 0.000 min
 Response: 1428003593
 Conc: 683.10 ng/ml



#9 2,4-D

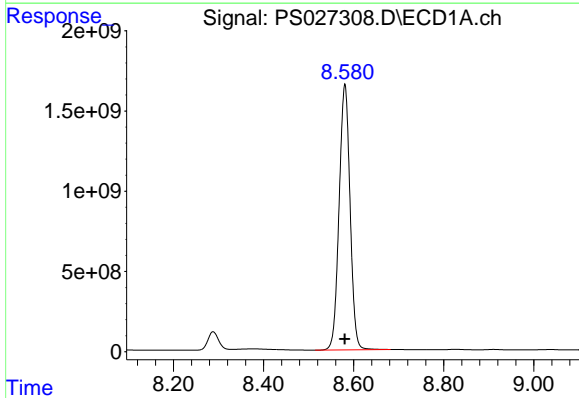
R.T.: 8.288 min
 Delta R.T.: 0.000 min
 Response: 1923125284
 Conc: 674.51 ng/ml

Instrument :
 ECD_S
 ClientSampleId :
 HSTDCCC750



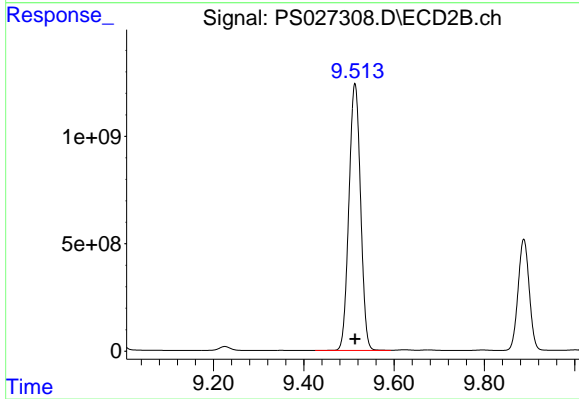
#9 2,4-D

R.T.: 8.986 min
 Delta R.T.: 0.000 min
 Response: 1590069122
 Conc: 682.52 ng/ml



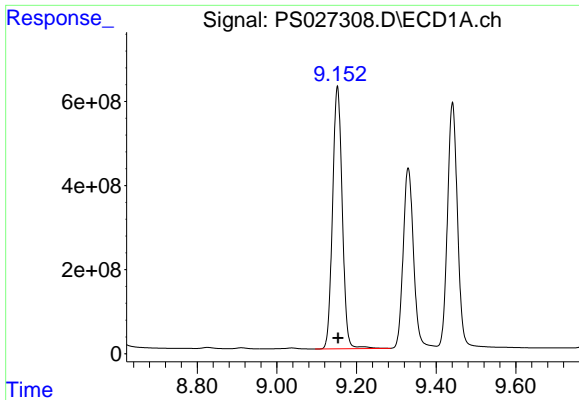
#10 Pentachlorophenol

R.T.: 8.580 min
 Delta R.T.: 0.000 min
 Response: 27895850454
 Conc: 705.70 ng/ml



#10 Pentachlorophenol

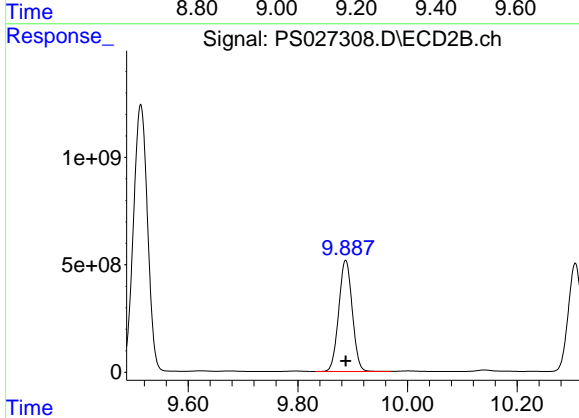
R.T.: 9.513 min
 Delta R.T.: 0.000 min
 Response: 22217339502
 Conc: 698.06 ng/ml



#11 2,4,5-TP (SILVEX)

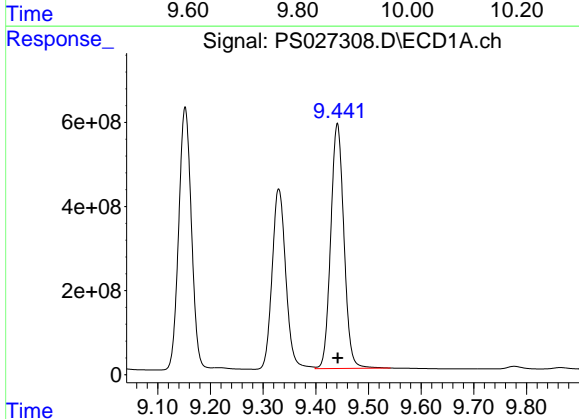
R.T.: 9.152 min
 Delta R.T.: -0.001 min
 Response: 10522741851
 Conc: 693.80 ng/ml

Instrument :
 ECD_S
 ClientSampleId :
 HSTDCCC750



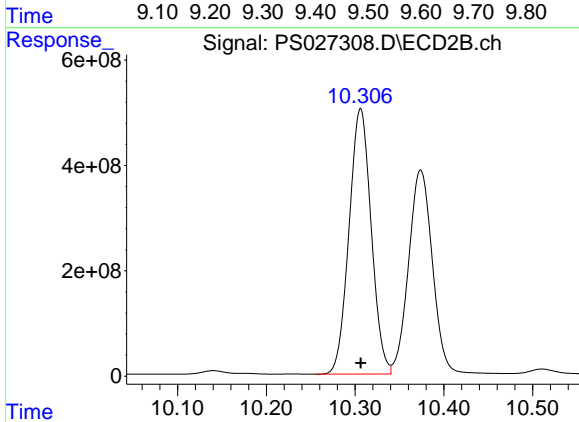
#11 2,4,5-TP (SILVEX)

R.T.: 9.887 min
 Delta R.T.: 0.000 min
 Response: 8844675064
 Conc: 692.56 ng/ml



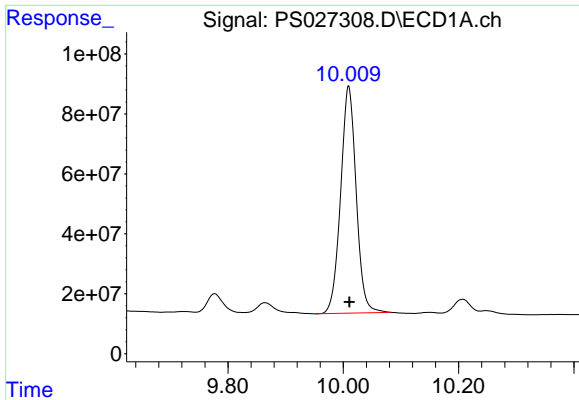
#12 2,4,5-T

R.T.: 9.441 min
 Delta R.T.: 0.000 min
 Response: 10112660912
 Conc: 692.38 ng/ml



#12 2,4,5-T

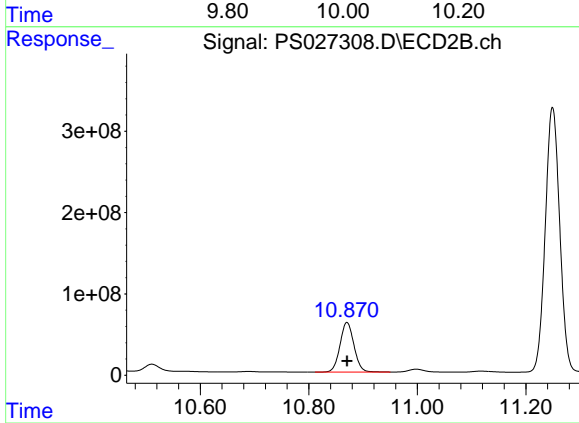
R.T.: 10.306 min
 Delta R.T.: 0.000 min
 Response: 8735438441
 Conc: 692.78 ng/ml



#13 2,4-DB

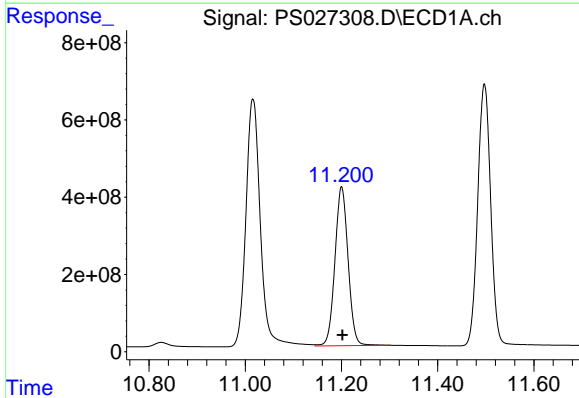
R.T.: 10.009 min
Delta R.T.: -0.001 min
Response: 1405919255
Conc: 685.53 ng/ml

Instrument :
ECD_S
ClientSampleId :
HSTDCCC750



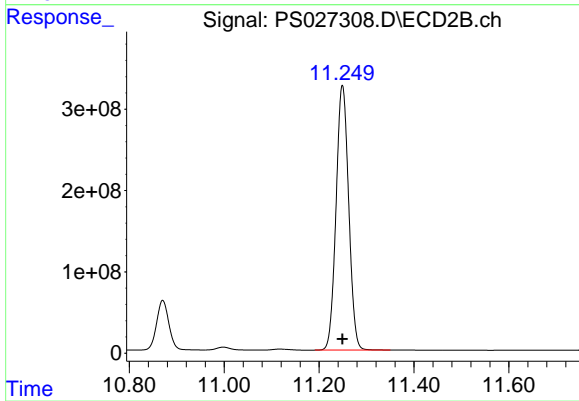
#13 2,4-DB

R.T.: 10.870 min
Delta R.T.: 0.000 min
Response: 1091725500
Conc: 690.64 ng/ml



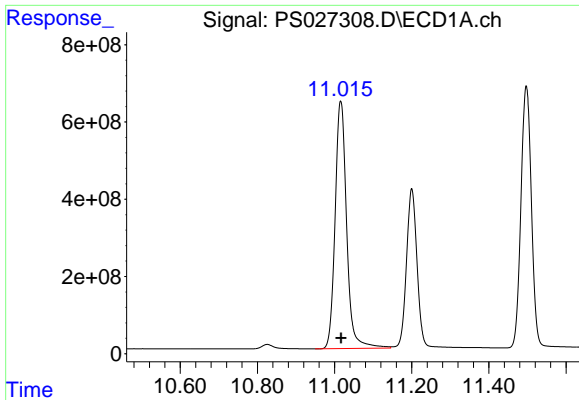
#14 DINOSEB

R.T.: 11.200 min
Delta R.T.: -0.002 min
Response: 7803284405
Conc: 700.14 ng/ml



#14 DINOSEB

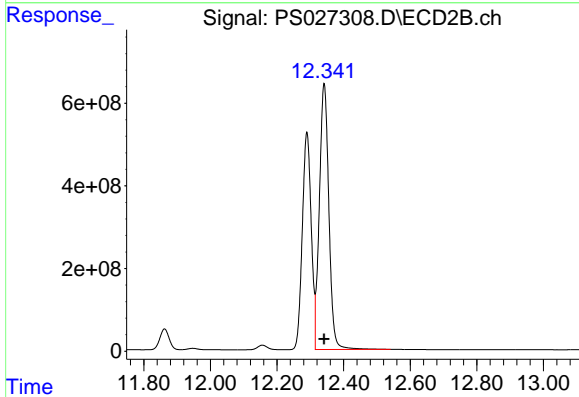
R.T.: 11.249 min
Delta R.T.: 0.000 min
Response: 6010376625
Conc: 705.68 ng/ml



#15 Picloram

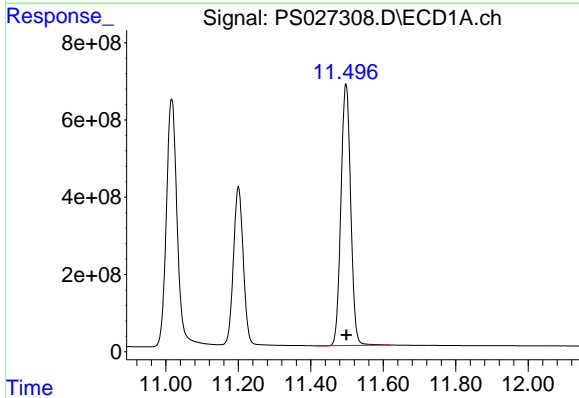
R.T.: 11.016 min
 Delta R.T.: 0.000 min
 Response: 13340669045
 Conc: 691.93 ng/ml

Instrument :
 ECD_S
 ClientSampleId :
 HSTDCCC750



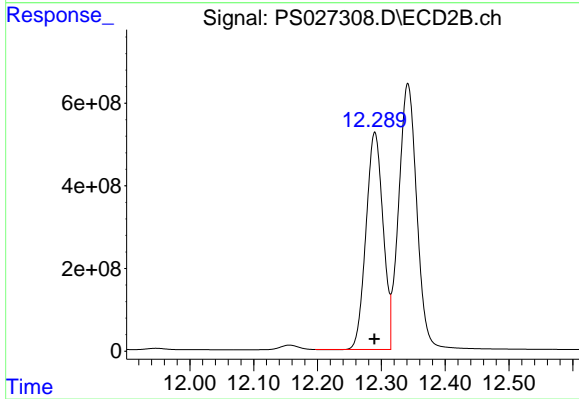
#15 Picloram

R.T.: 12.342 min
 Delta R.T.: 0.000 min
 Response: 12719596996
 Conc: 705.03 ng/ml



#16 DCPA

R.T.: 11.497 min
 Delta R.T.: 0.000 min
 Response: 12669448974
 Conc: 701.34 ng/ml



#16 DCPA

R.T.: 12.290 min
 Delta R.T.: 0.000 min
 Response: 9743958302
 Conc: 700.68 ng/ml