

Data Path : Z:\pestpcbsrv\HPCHEM1\ECD\_S\Data\PS080618\  
 Data File : PS001404.D  
 Signal(s) : Signal #1: ECD1A.ch Signal #2: ECD2B.ch  
 Acq On : 06 Aug 2018 22:40  
 Operator : UA  
 Sample : HSTDCCC750  
 Misc :  
 ALS Vial : 3 Sample Multiplier: 1

Instrument :  
 ECD\_S  
 ClientSampleId :  
 HSTDCCC750

Integration File signal 1: autoint1.e  
 Integration File signal 2: autoint2.e  
 Quant Time: Aug 07 00:54:03 2018  
 Quant Method : Z:\pestpcbsrv\HPCHEM1\ECD\_S\Method\PS072118.M  
 Quant Title : 8080.M  
 QLast Update : Sat Jul 21 01:18:58 2018  
 Response via : Initial Calibration  
 Integrator: ChemStation

Volume Inj. : 2 µl  
 Signal #1 Phase : Rtx-CLPesticides Signal #2 Phase: Rtx-CLPesticides2  
 Signal #1 Info : 30M x 0.32mm x0.5 Signal #2 Info : 30M x 0.32mm x 0.25µm

	Compound	RT#1	RT#2	Resp#1	Resp#2	ng/ml	ng/ml
-----							
System Monitoring Compounds							
4) S	2,4-DCAA	11.635	11.036	134.7E6	130.3E6	725.828	716.494
Target Compounds							
1) T	Dalapon	3.030	2.427	153.3E6	149.2E6	646.422m	654.701
2) T	3,5-DICHL...	10.051	9.183	184.6E6	168.0E6	683.946	659.476
3) T	4-Nitroph...	11.228	10.182	74512296	64663107	647.435	634.331
5) T	DICAMBA	11.950	11.323	504.6E6	464.3E6	701.782	677.428
6) T	MCP P	12.288	11.547	35630695	29846869	70.892	68.785m
7) T	MCPA	12.539	11.923	53570964	46388215	67.929	71.340m
8) T	DICHLORPROP	13.142	12.447	126.7E6	115.8E6	693.989	653.518
9) T	2,4-D	13.500	12.918	169.1E6	156.3E6	688.892	658.881m
10) T	Pentachlo...	13.889	13.474	1993.8E6	1907.0E6	708.139	692.887m
11) T	2,4,5-TP ...	14.758	14.087	789.6E6	746.9E6	703.580	683.109m
12) T	2,4,5-T	15.155	14.658	778.0E6	577.2E6	699.217	624.807
13) T	2,4-DB	15.906	15.304	100.1E6	88860779	695.457	667.311
14) T	DINOSEB	17.405	15.735	539.7E6	487.0E6	702.721	685.173
15) T	Picloram	17.164	16.917	975.1E6	915.4E6	616.914	664.022
16) T	DCPA	17.744	16.973	960.3E6	887.4E6	711.292	614.442

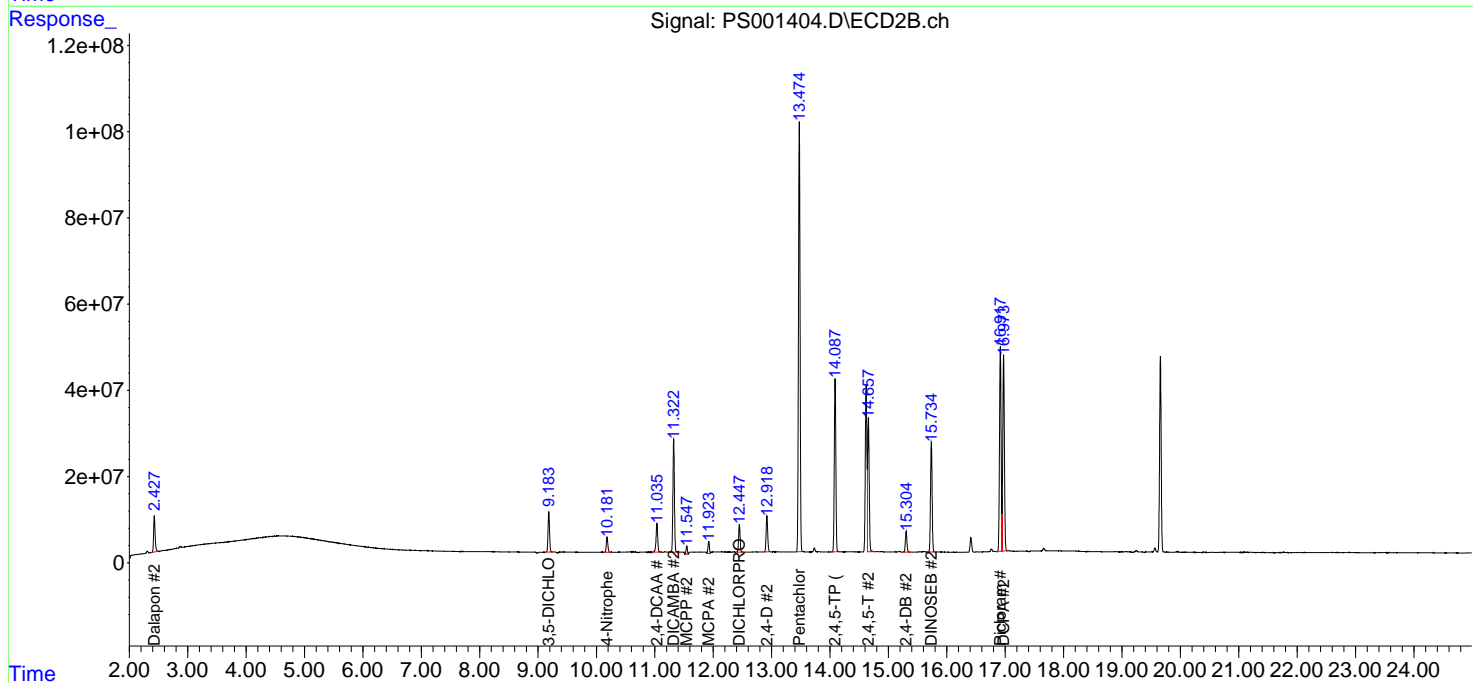
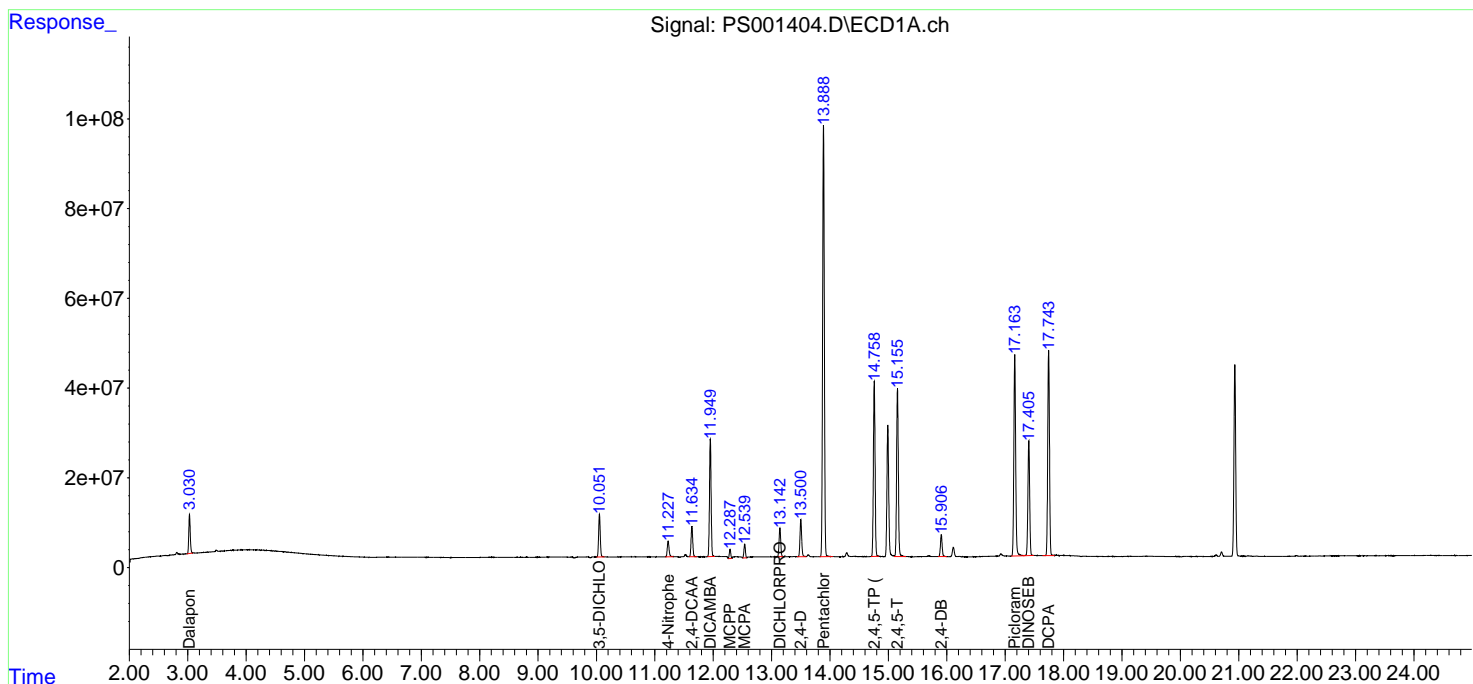
(f)=RT Delta > 1/2 Window (#)=Amounts differ by > 25% (m)=manual int.

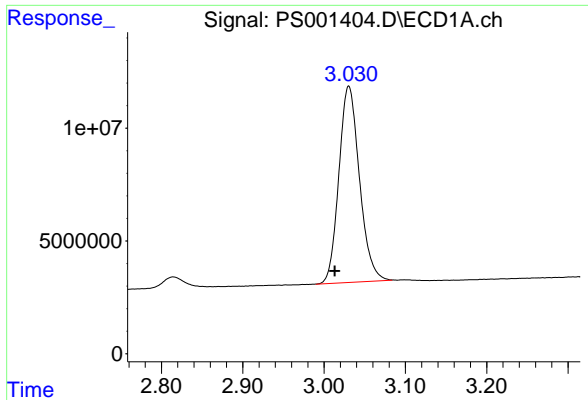
Data Path : Z:\pestpcbsrv\HPCHEM1\ECD\_S\Data\PS080618\  
 Data File : PS001404.D  
 Signal(s) : Signal #1: ECD1A.ch Signal #2: ECD2B.ch  
 Acq On : 06 Aug 2018 22:40  
 Operator : UA  
 Sample : HSTDCCC750  
 Misc :  
 ALS Vial : 3 Sample Multiplier: 1

Instrument :  
 ECD\_S  
 ClientSampleID :  
 HSTDCCC750

Integration File signal 1: autoint1.e  
 Integration File signal 2: autoint2.e  
 Quant Time: Aug 07 00:54:03 2018  
 Quant Method : Z:\pestpcbsrv\HPCHEM1\ECD\_S\Method\PS072118.M  
 Quant Title : 8080.M  
 QLast Update : Sat Jul 21 01:18:58 2018  
 Response via : Initial Calibration  
 Integrator: ChemStation

Volume Inj. : 2 µl  
 Signal #1 Phase : Rtx-CLPesticides Signal #2 Phase: Rtx-CLPesticides2  
 Signal #1 Info : 30M x 0.32mm x0.5 Signal #2 Info : 30M x 0.32mm x 0.25µm

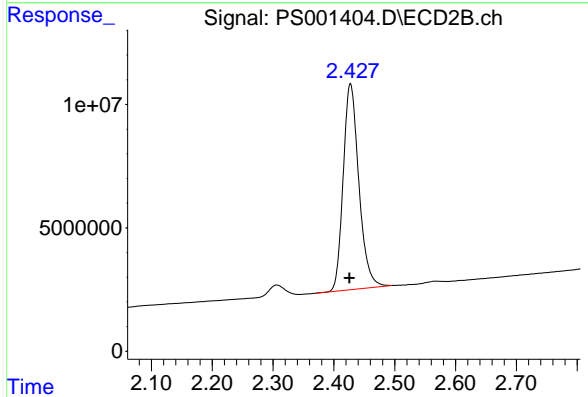




#1 Dalapon

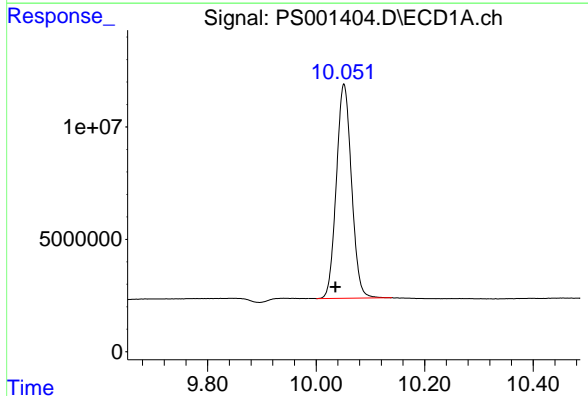
R.T.: 3.030 min  
 Delta R.T.: 0.017 min  
 Response: 153283276  
 Conc: 646.42 ng/ml m

Instrument :  
 ECD\_S  
 ClientSampleId :  
 HSTDCCC750



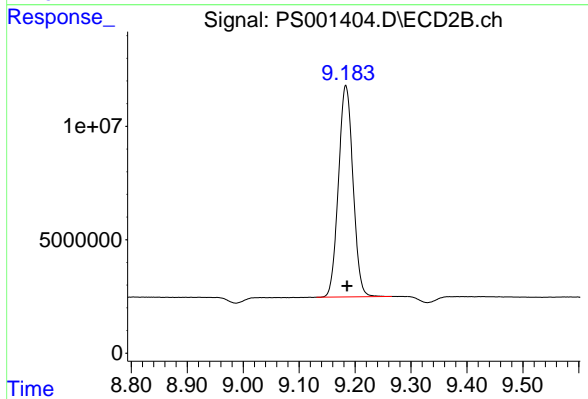
#1 Dalapon

R.T.: 2.427 min  
 Delta R.T.: 0.002 min  
 Response: 149188115  
 Conc: 654.70 ng/ml



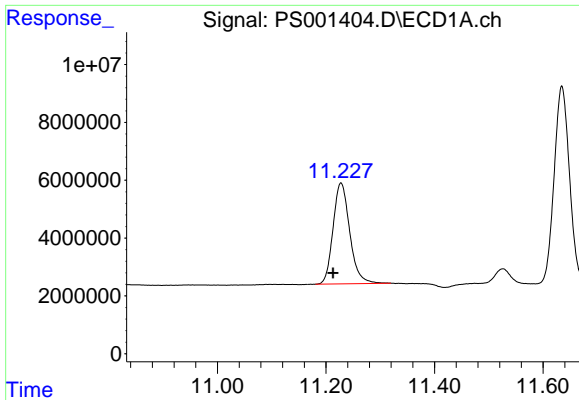
#2 3,5-DICHLOROBENZOIC ACID

R.T.: 10.051 min  
 Delta R.T.: 0.016 min  
 Response: 184594195  
 Conc: 683.95 ng/ml



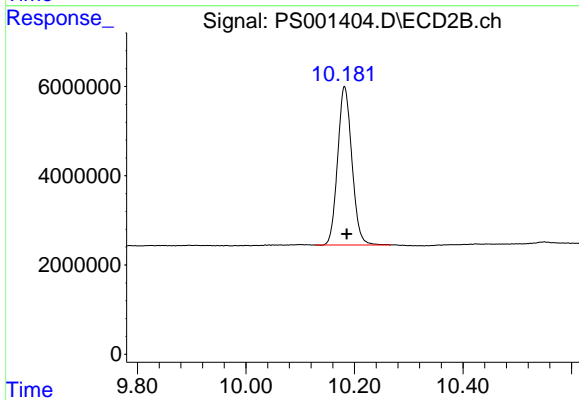
#2 3,5-DICHLOROBENZOIC ACID

R.T.: 9.183 min  
 Delta R.T.: -0.002 min  
 Response: 168000706  
 Conc: 659.48 ng/ml

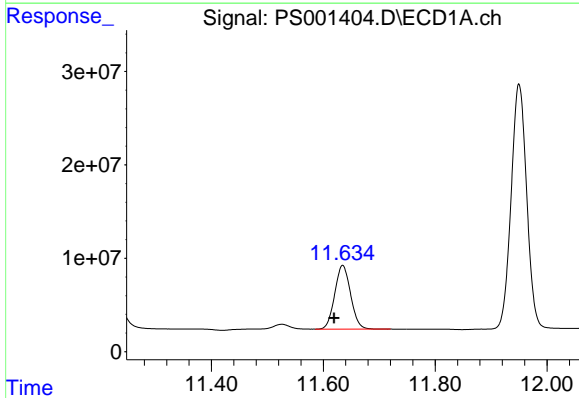


#3 4-Nitrophenol  
R.T.: 11.228 min  
Delta R.T.: 0.015 min  
Response: 74512296  
Conc: 647.43 ng/ml

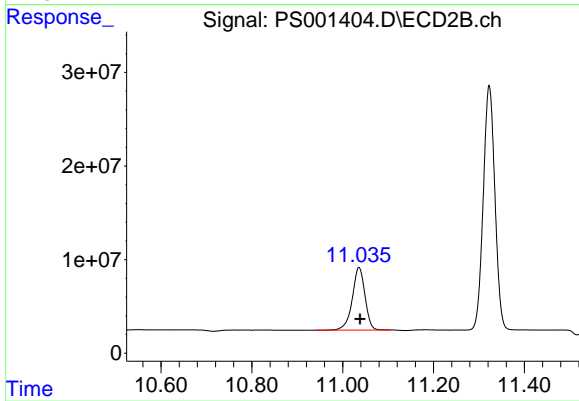
Instrument :  
ECD\_S  
ClientSampleId :  
HSTDCCC750



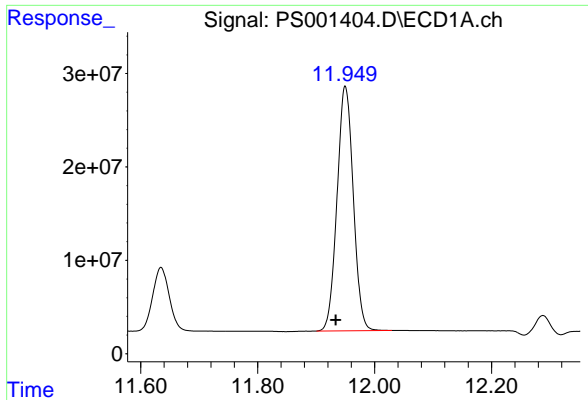
#3 4-Nitrophenol  
R.T.: 10.182 min  
Delta R.T.: -0.004 min  
Response: 64663107  
Conc: 634.33 ng/ml



#4 2,4-DCAA  
R.T.: 11.635 min  
Delta R.T.: 0.015 min  
Response: 134677284  
Conc: 725.83 ng/ml



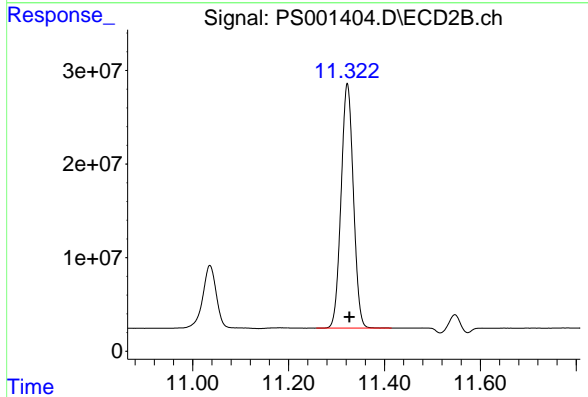
#4 2,4-DCAA  
R.T.: 11.036 min  
Delta R.T.: -0.003 min  
Response: 130312312  
Conc: 716.49 ng/ml



#5 DICAMBA

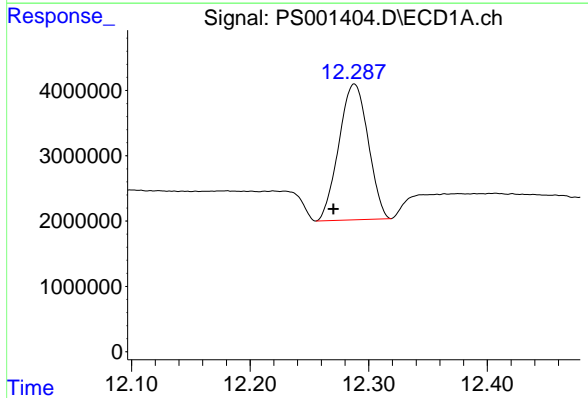
R.T.: 11.950 min  
 Delta R.T.: 0.016 min  
 Response: 504563136  
 Conc: 701.78 ng/ml

Instrument :  
 ECD\_S  
 ClientSampleId :  
 HSTDCCC750



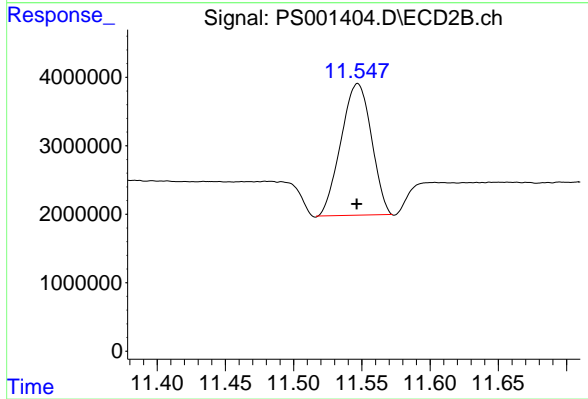
#5 DICAMBA

R.T.: 11.323 min  
 Delta R.T.: -0.004 min  
 Response: 464297438  
 Conc: 677.43 ng/ml



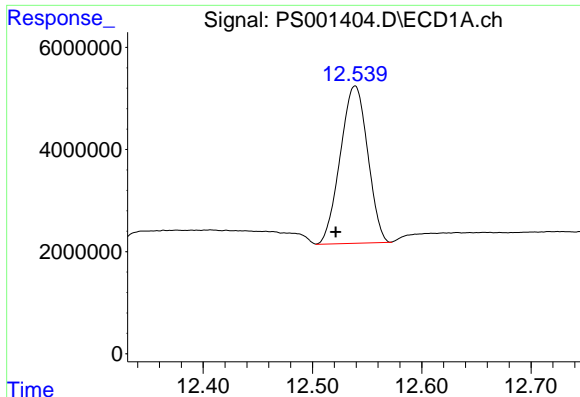
#6 MCPP

R.T.: 12.288 min  
 Delta R.T.: 0.018 min  
 Response: 35630695  
 Conc: 70.89 ug/ml



#6 MCPP

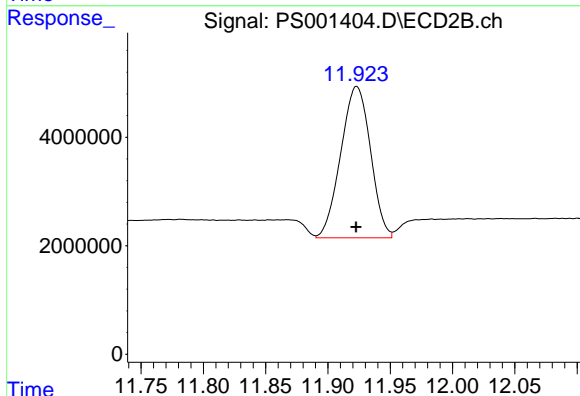
R.T.: 11.547 min  
 Delta R.T.: 0.000 min  
 Response: 29846869  
 Conc: 68.79 ug/ml m



#7 MCPA

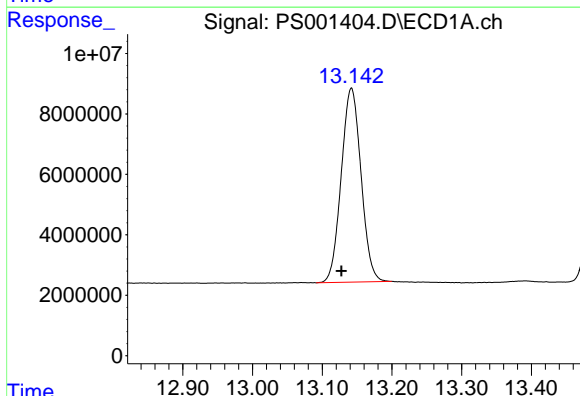
R.T.: 12.539 min  
 Delta R.T.: 0.018 min  
 Response: 53570964  
 Conc: 67.93 ug/ml

Instrument :  
 ECD\_S  
 ClientSampleId :  
 HSTDCCC750



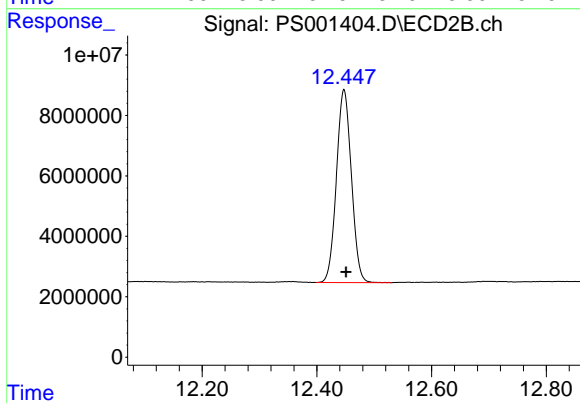
#7 MCPA

R.T.: 11.923 min  
 Delta R.T.: 0.000 min  
 Response: 46388215  
 Conc: 71.34 ug/ml m



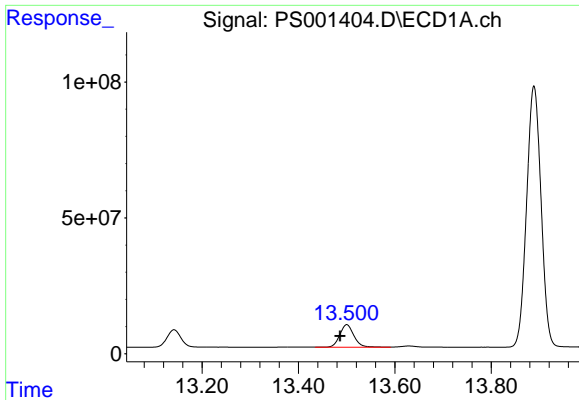
#8 DICHLORPROP

R.T.: 13.142 min  
 Delta R.T.: 0.014 min  
 Response: 126680618  
 Conc: 693.99 ng/ml



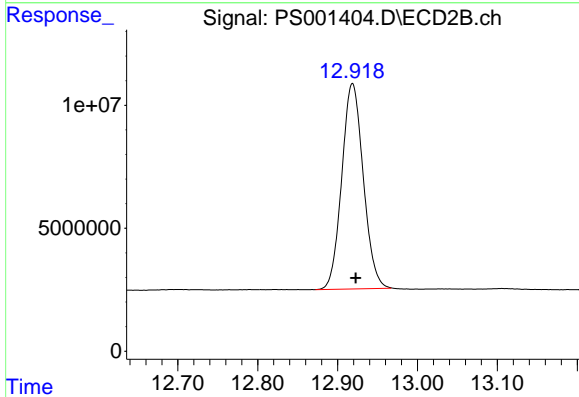
#8 DICHLORPROP

R.T.: 12.447 min  
 Delta R.T.: -0.004 min  
 Response: 115768676  
 Conc: 653.52 ng/ml

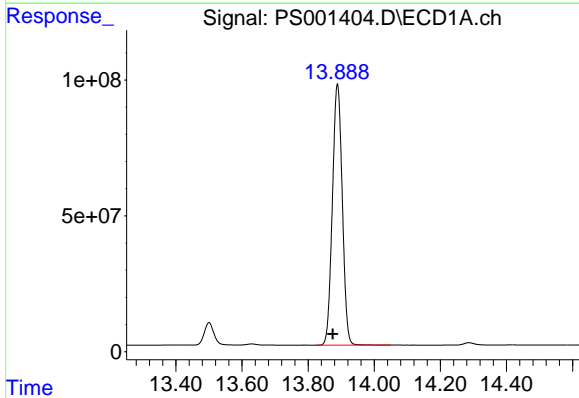


#9 2,4-D  
 R.T.: 13.500 min  
 Delta R.T.: 0.014 min  
 Response: 169100133  
 Conc: 688.89 ng/ml

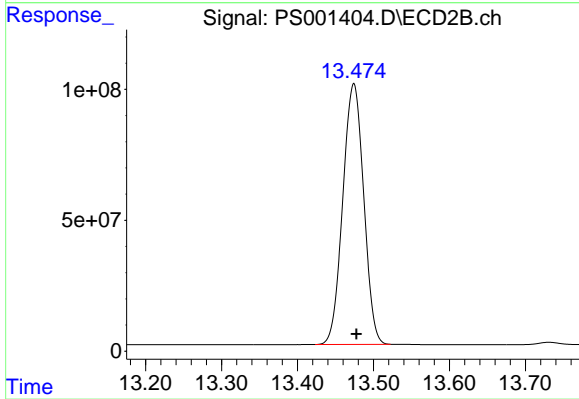
Instrument :  
 ECD\_S  
 ClientSampleId :  
 HSTDCCC750



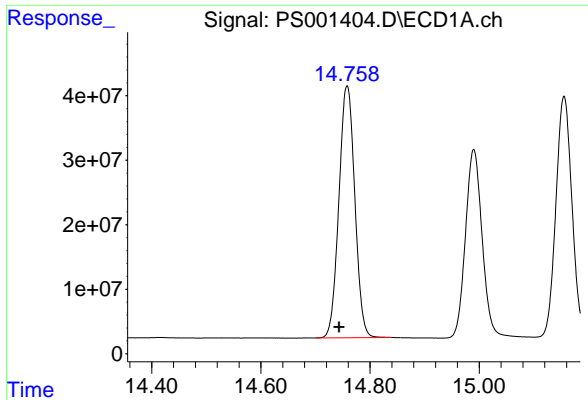
#9 2,4-D  
 R.T.: 12.918 min  
 Delta R.T.: -0.004 min  
 Response: 156347847  
 Conc: 658.88 ng/ml m



#10 Pentachlorophenol  
 R.T.: 13.889 min  
 Delta R.T.: 0.014 min  
 Response: 1993770150  
 Conc: 708.14 ng/ml

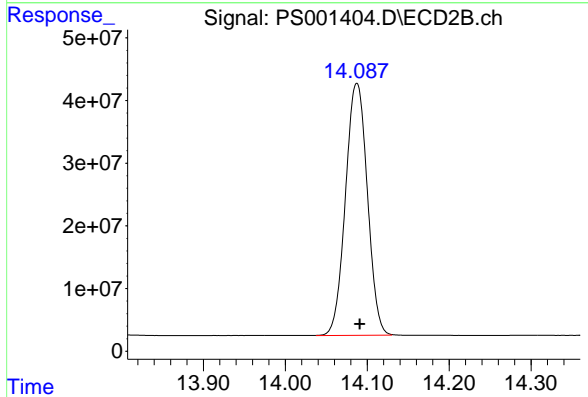


#10 Pentachlorophenol  
 R.T.: 13.474 min  
 Delta R.T.: -0.004 min  
 Response: 1906950300  
 Conc: 692.89 ng/ml m

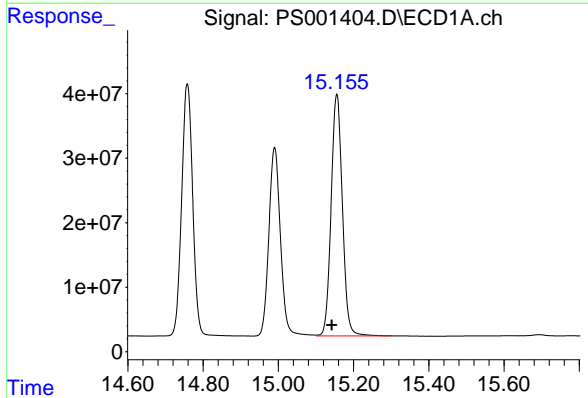


#11 2,4,5-TP (SILVEX)  
 R.T.: 14.758 min  
 Delta R.T.: 0.015 min  
 Response: 789642256  
 Conc: 703.58 ng/ml

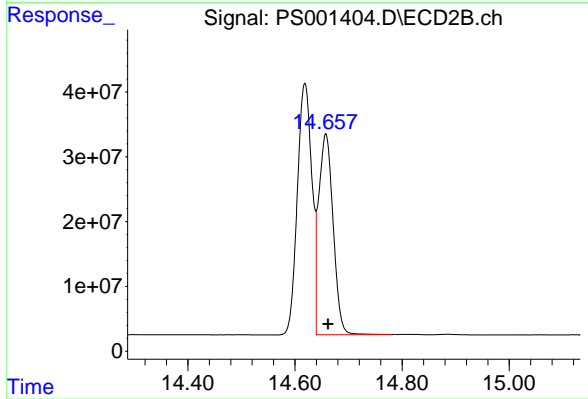
Instrument :  
 ECD\_S  
 ClientSampleId :  
 HSTDCCC750



#11 2,4,5-TP (SILVEX)  
 R.T.: 14.087 min  
 Delta R.T.: -0.004 min  
 Response: 746947263  
 Conc: 683.11 ng/ml m

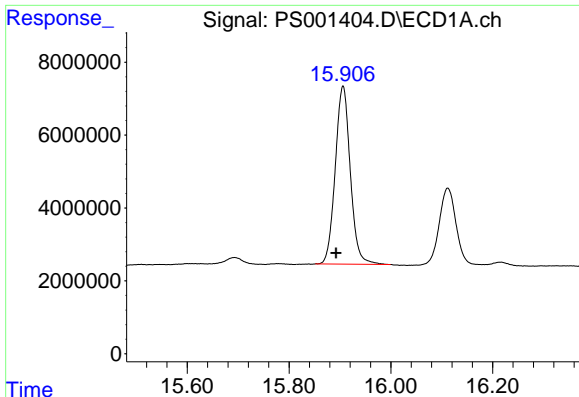


#12 2,4,5-T  
 R.T.: 15.155 min  
 Delta R.T.: 0.014 min  
 Response: 778043191  
 Conc: 699.22 ng/ml



#12 2,4,5-T  
 R.T.: 14.658 min  
 Delta R.T.: -0.004 min  
 Response: 577151401  
 Conc: 624.81 ng/ml

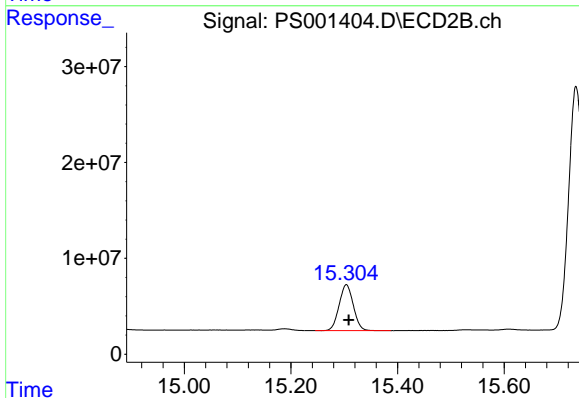




#13 2,4-DB

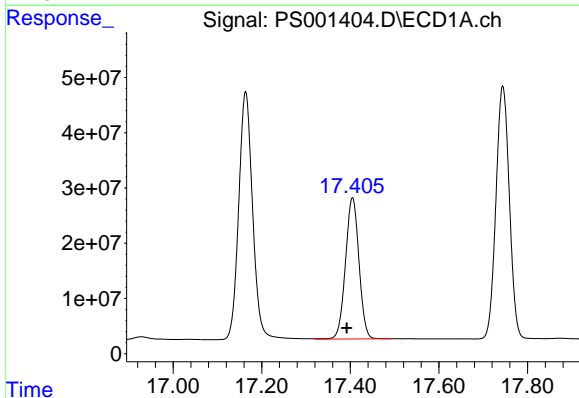
R.T.: 15.906 min  
 Delta R.T.: 0.014 min  
 Response: 100120617  
 Conc: 695.46 ng/ml

Instrument :  
 ECD\_S  
 ClientSampleId :  
 HSTDCCC750



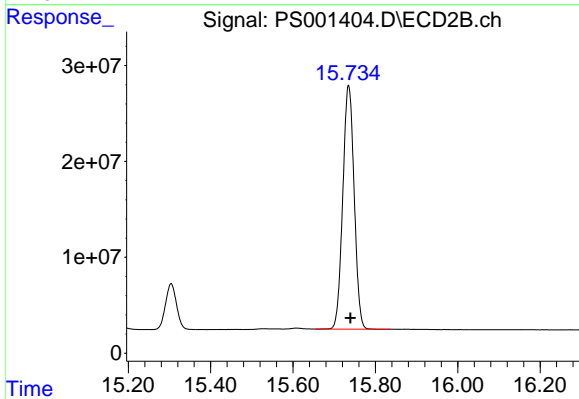
#13 2,4-DB

R.T.: 15.304 min  
 Delta R.T.: -0.004 min  
 Response: 88860779  
 Conc: 667.31 ng/ml



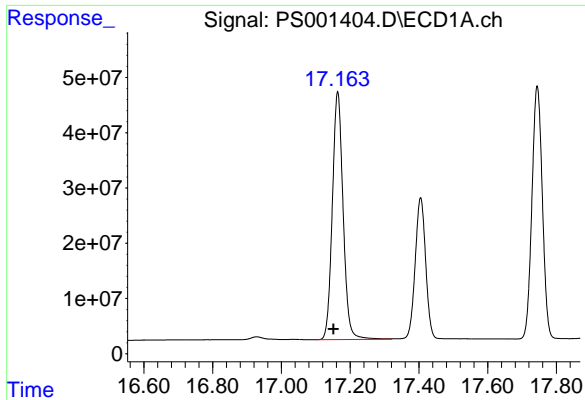
#14 DINOSEB

R.T.: 17.405 min  
 Delta R.T.: 0.013 min  
 Response: 539734846  
 Conc: 702.72 ng/ml



#14 DINOSEB

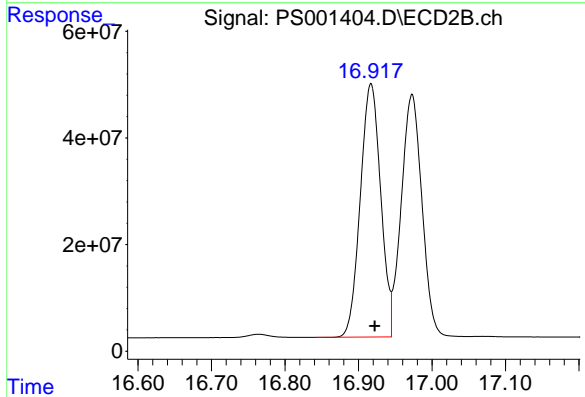
R.T.: 15.735 min  
 Delta R.T.: -0.004 min  
 Response: 487026076  
 Conc: 685.17 ng/ml



#15 Picloram

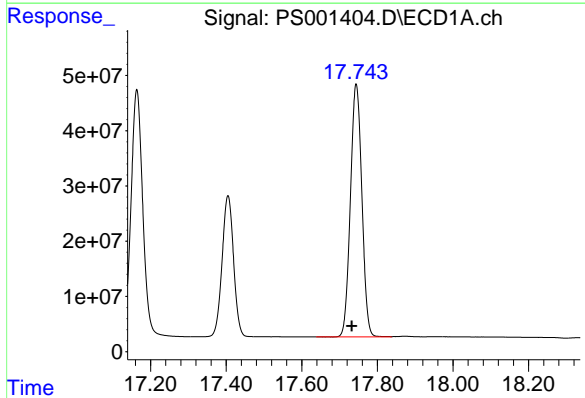
R.T.: 17.164 min  
 Delta R.T.: 0.012 min  
 Response: 975122932  
 Conc: 616.91 ng/ml

Instrument :  
 ECD\_S  
 ClientSampleId :  
 HSTDCCC750



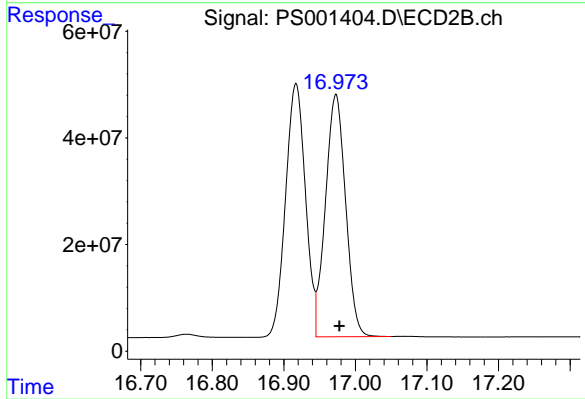
#15 Picloram

R.T.: 16.917 min  
 Delta R.T.: -0.005 min  
 Response: 915360823  
 Conc: 664.02 ng/ml



#16 DCPA

R.T.: 17.744 min  
 Delta R.T.: 0.012 min  
 Response: 960302686  
 Conc: 711.29 ng/ml



#16 DCPA

R.T.: 16.973 min  
 Delta R.T.: -0.005 min  
 Response: 887433267  
 Conc: 614.44 ng/ml