

Data Path : Z:\pestpcbsrv\HPCHEM1\ECD_S\Data\PS080618\
 Data File : PS001409.D
 Signal(s) : Signal #1: ECD1A.ch Signal #2: ECD2B.ch
 Acq On : 07 Aug 2018 01:15
 Operator : UA
 Sample : J4316-08
 Misc :
 ALS Vial : 24 Sample Multiplier: 1

Instrument :
 ECD_S
 ClientSampleId :
 T40-CLAY-1

Integration File signal 1: autoint1.e
 Integration File signal 2: autoint2.e
 Quant Time: Aug 07 01:55:05 2018
 Quant Method : Z:\pestpcbsrv\HPCHEM1\ECD_S\Method\PS072118.M
 Quant Title : 8080.M
 QLast Update : Sat Jul 21 01:18:58 2018
 Response via : Initial Calibration
 Integrator: ChemStation

Volume Inj. : 2 µl
 Signal #1 Phase : Rtx-CLPesticides Signal #2 Phase: Rtx-CLPesticides2
 Signal #1 Info : 30M x 0.32mm x0.5 Signal #2 Info : 30M x 0.32mm x 0.25µm

Compound	RT#1	RT#2	Resp#1	Resp#2	ng/ml	ng/ml

System Monitoring Compounds						
4) S 2,4-DCAA	11.630	11.049	94875642	86420121	511.321	475.163

Target Compounds

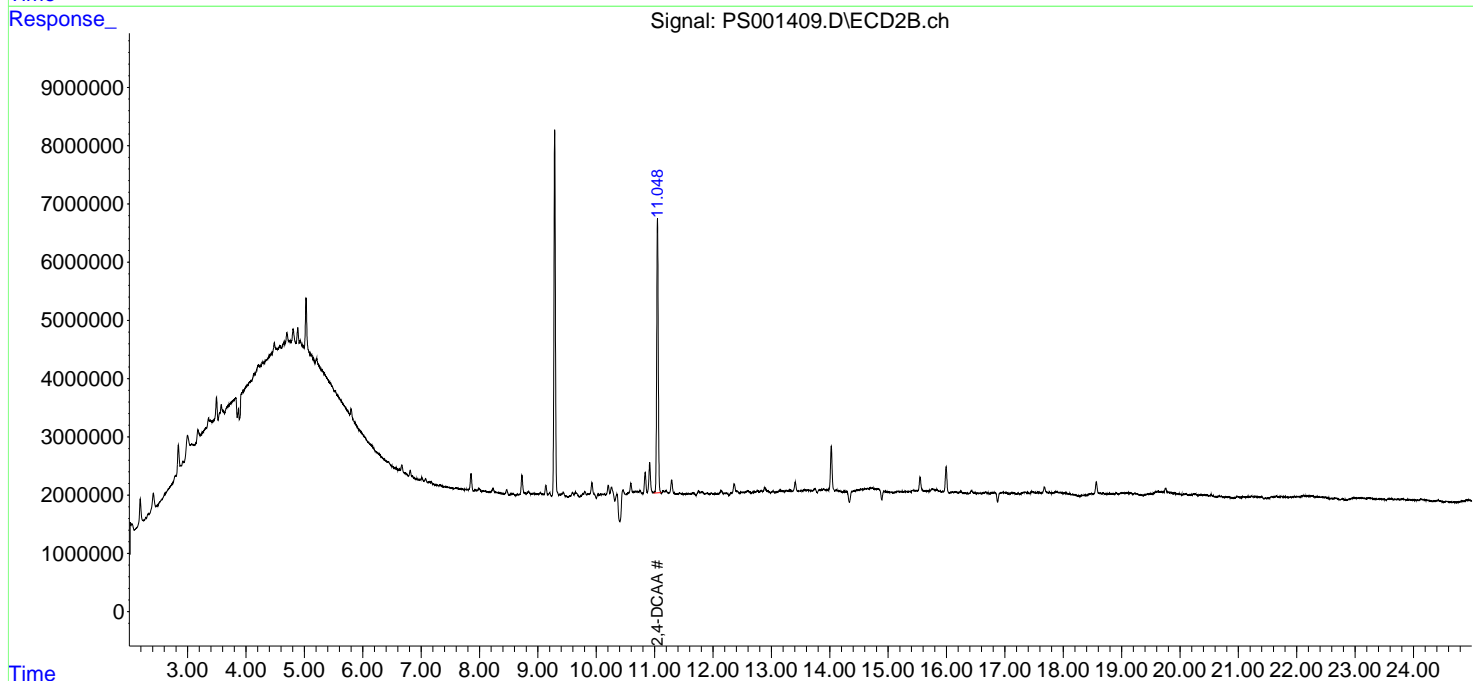
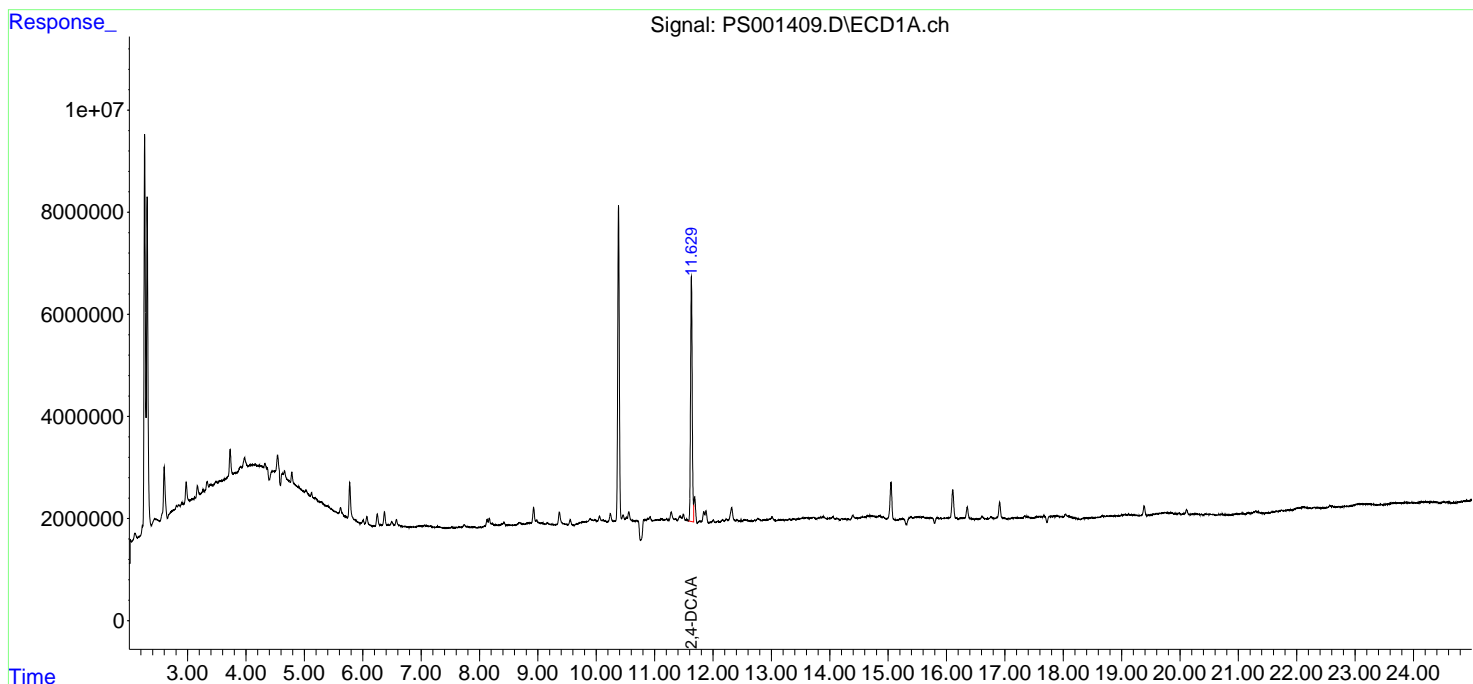
(f)=RT Delta > 1/2 Window (#)=Amounts differ by > 25% (m)=manual int.

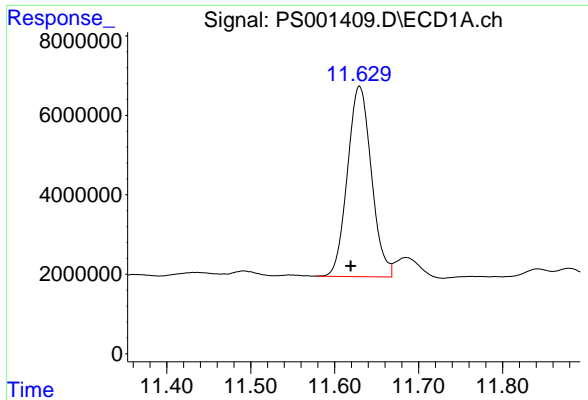
Data Path : Z:\pestpcbsrv\HPCHEM1\ECD_S\Data\PS080618\
 Data File : PS001409.D
 Signal(s) : Signal #1: ECD1A.ch Signal #2: ECD2B.ch
 Acq On : 07 Aug 2018 01:15
 Operator : UA
 Sample : J4316-08
 Misc :
 ALS Vial : 24 Sample Multiplier: 1

Instrument :
 ECD_S
 ClientSampleId :
 T40-CLAY-1

Integration File signal 1: autoint1.e
 Integration File signal 2: autoint2.e
 Quant Time: Aug 07 01:55:05 2018
 Quant Method : Z:\pestpcbsrv\HPCHEM1\ECD_S\Method\PS072118.M
 Quant Title : 8080.M
 QLast Update : Sat Jul 21 01:18:58 2018
 Response via : Initial Calibration
 Integrator: ChemStation

Volume Inj. : 2 µl
 Signal #1 Phase : Rtx-CLPesticides Signal #2 Phase: Rtx-CLPesticides2
 Signal #1 Info : 30M x 0.32mm x0.5 Signal #2 Info : 30M x 0.32mm x 0.25µm

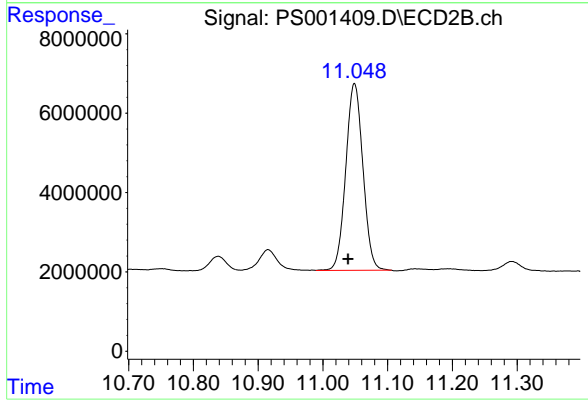




#4 2,4-DCAA

R.T.: 11.630 min
Delta R.T.: 0.010 min
Response: 94875642
Conc: 511.32 ng/ml

Instrument :
ECD_S
ClientSampleId :
T40-CLAY-1



#4 2,4-DCAA

R.T.: 11.049 min
Delta R.T.: 0.010 min
Response: 86420121
Conc: 475.16 ng/ml