

Data Path : Z:\pestpcbsrv\HPCHEM1\ECD_S\Data\PS080619\
 Data File : PS005917.D
 Signal(s) : Signal #1: ECD1A.ch Signal #2: ECD2B.ch
 Acq On : 06 Aug 2019 21:02
 Operator : SM\AJ
 Sample : K4130-34
 Misc :
 ALS Vial : 23 Sample Multiplier: 1

Instrument :
 ECD_S
 ClientSampleId :

Integration File signal 1: autoint1.e
 Integration File signal 2: autoint2.e
 Quant Time: Aug 07 01:42:34 2019
 Quant Method : Z:\pestpcbsrv\HPCHEM1\ECD_S\Method\PS072619.M
 Quant Title : 8080.M
 QLast Update : Sat Jul 27 00:42:55 2019
 Response via : Initial Calibration
 Integrator: ChemStation

Volume Inj. : 2 µl
 Signal #1 Phase : Rtx-CLPesticides Signal #2 Phase: Rtx-CLPesticides2
 Signal #1 Info : 30M x 0.32mm x0.5 Signal #2 Info : 30M x 0.32mm x 0.25µm

Compound	RT#1	RT#2	Resp#1	Resp#2	ng/ml	ng/ml

System Monitoring Compounds						
4) S 2,4-DCAA	5.545	5.264	246.8E6	176.4E6	170.098	177.339
Target Compounds						
1) T Dalapon	2.045	0.000	28829567	0	15.556	N.D. #
2) T 3,5-DICHL...	0.000	4.582	0	155.8E6	N.D.	120.074
7) T MCPA	5.955	0.000	44135865	0	6.764	N.D. #
8) T DICHLORPROP	0.000	5.958	0	30483709	N.D.	33.008
9) T 2,4-D	6.623	0.000	216.5E6	0	144.492	N.D. #
11) T 2,4,5-TP ...	0.000	6.909	0	68792900	N.D.	13.262

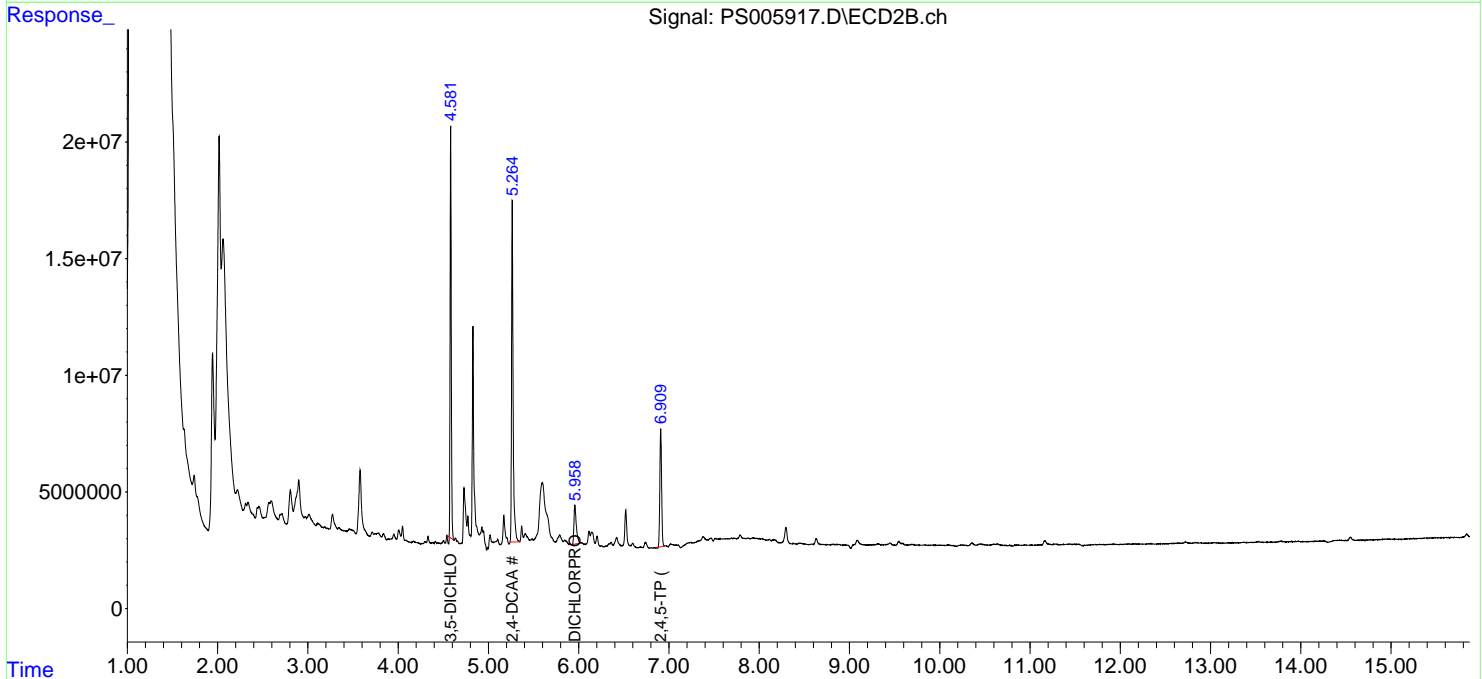
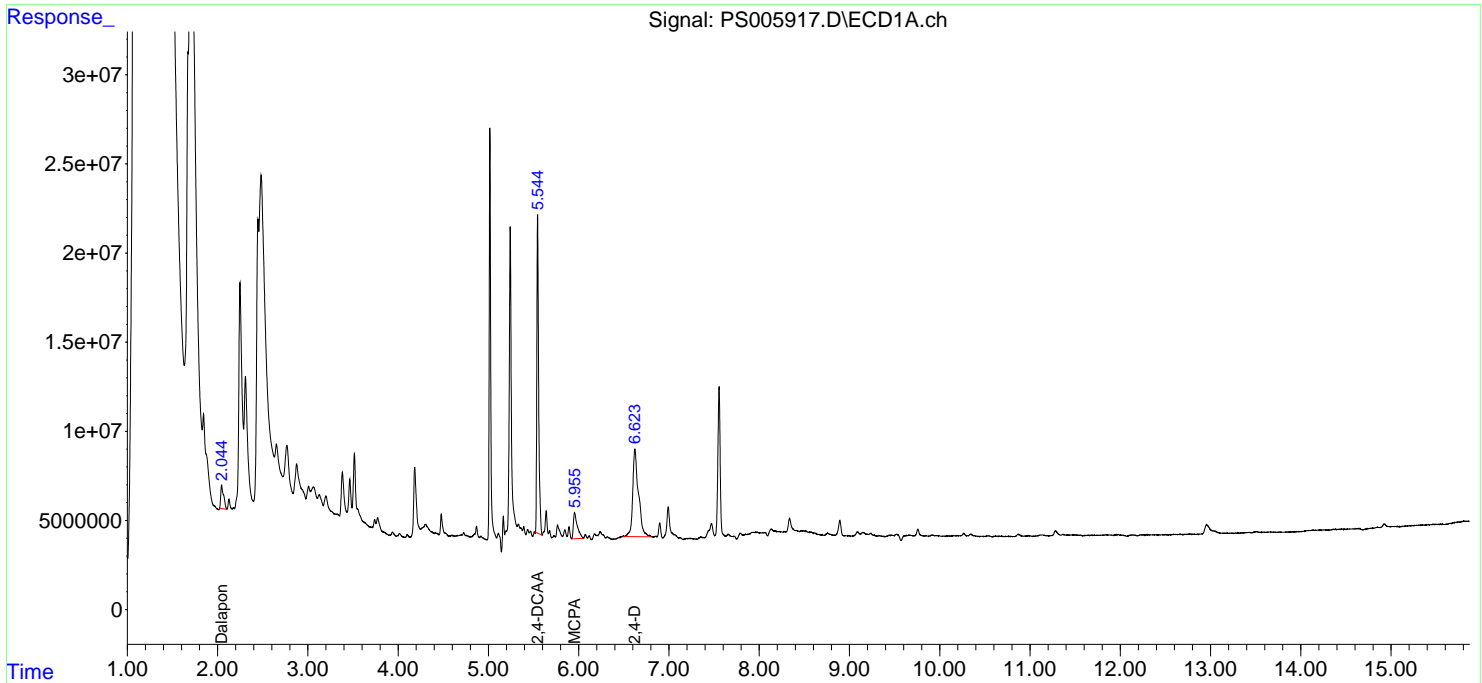
(f)=RT Delta > 1/2 Window (#)=Amounts differ by > 25% (m)=manual int.

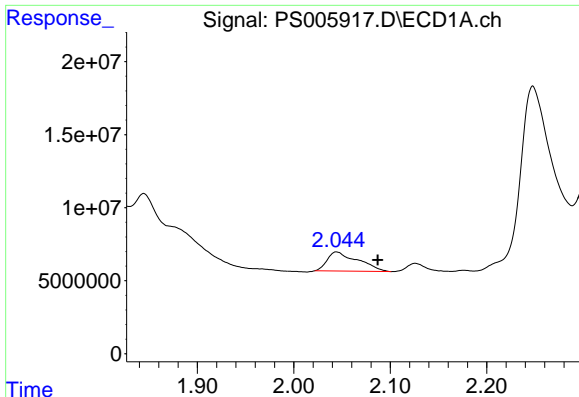
Data Path : Z:\pestpcbsrv\HPCHEM1\ECD_S\Data\PS080619\
 Data File : PS005917.D
 Signal(s) : Signal #1: ECD1A.ch Signal #2: ECD2B.ch
 Acq On : 06 Aug 2019 21:02
 Operator : SM\AJ
 Sample : K4130-34
 Misc :
 ALS Vial : 23 Sample Multiplier: 1

Instrument :
 ECD_S
 ClientSampled :

Integration File signal 1: autoint1.e
 Integration File signal 2: autoint2.e
 Quant Time: Aug 07 01:42:34 2019
 Quant Method : Z:\pestpcbsrv\HPCHEM1\ECD_S\Method\PS072619.M
 Quant Title : 8080.M
 QLast Update : Sat Jul 27 00:42:55 2019
 Response via : Initial Calibration
 Integrator: ChemStation

Volume Inj. : 2 µl
 Signal #1 Phase : Rtx-CLPesticides Signal #2 Phase: Rtx-CLPesticides2
 Signal #1 Info : 30M x 0.32mm x 0.5 Signal #2 Info : 30M x 0.32mm x 0.25µm

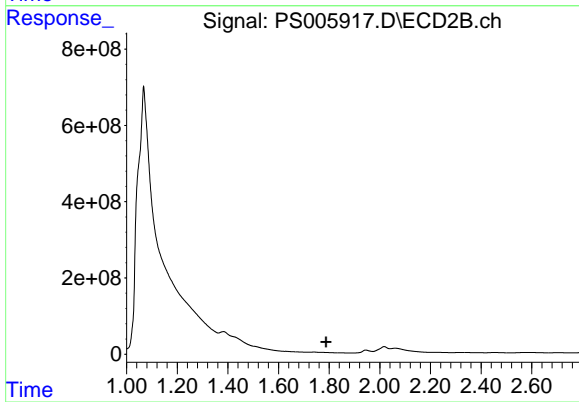




#1 Dalapon

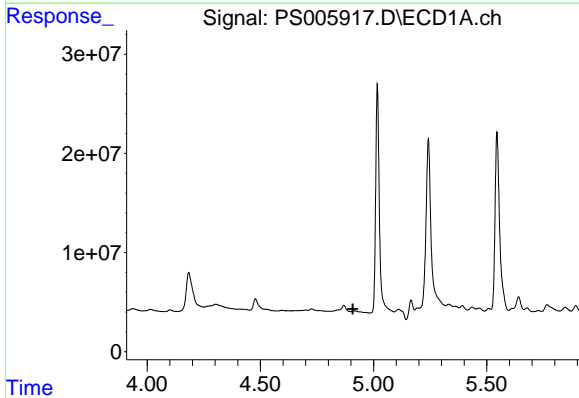
R.T.: 2.045 min
 Delta R.T.: -0.042 min
 Response: 28829567
 Conc: 15.56 ng/ml

Instrument :
 ECD_S
 ClientSampleId :



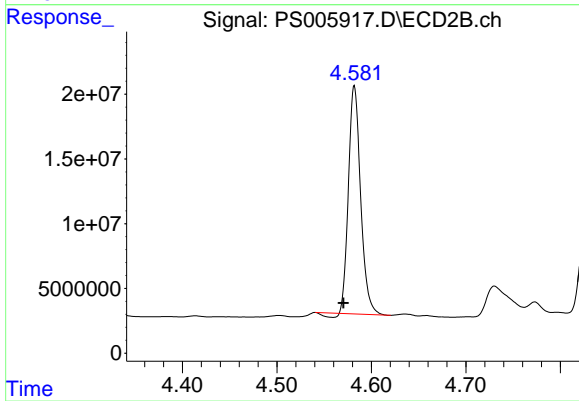
#1 Dalapon

R.T.: 0.000 min
 Exp R.T. : 1.788 min
 Response: 0
 Conc: N.D.



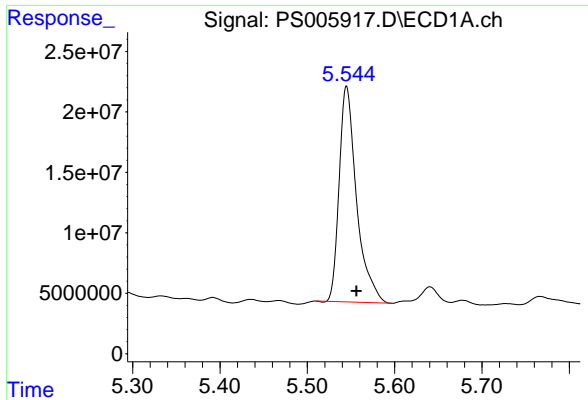
#2 3,5-DICHLOROBENZOIC ACID

R.T.: 0.000 min
 Exp R.T. : 4.909 min
 Response: 0
 Conc: N.D.



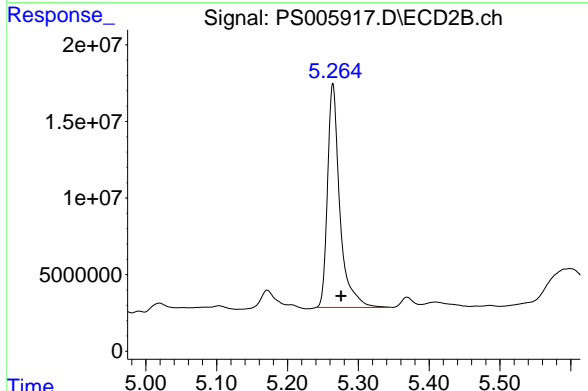
#2 3,5-DICHLOROBENZOIC ACID

R.T.: 4.582 min
 Delta R.T.: 0.012 min
 Response: 155773593
 Conc: 120.07 ng/ml

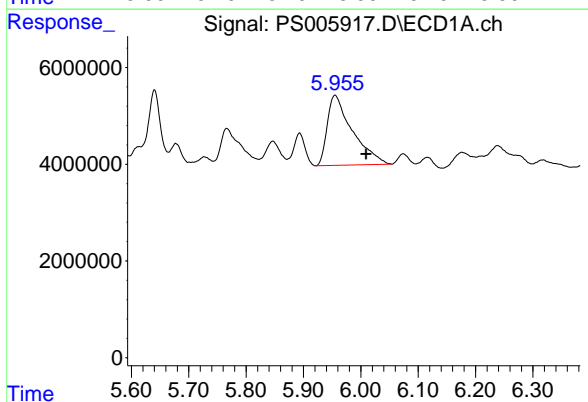


#4 2,4-DCAA
 R.T.: 5.545 min
 Delta R.T.: -0.011 min
 Response: 246781188
 Conc: 170.10 ng/ml

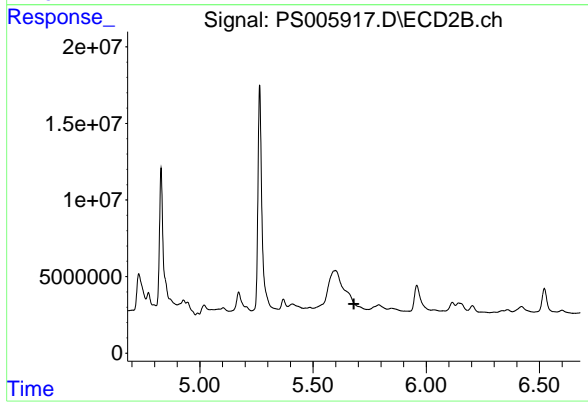
Instrument :
 ECD_S
 ClientSampleId :



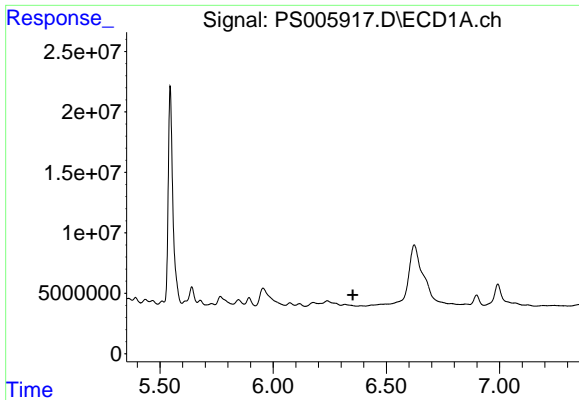
#4 2,4-DCAA
 R.T.: 5.264 min
 Delta R.T.: -0.011 min
 Response: 176394796
 Conc: 177.34 ng/ml



#7 MCPA
 R.T.: 5.955 min
 Delta R.T.: -0.054 min
 Response: 44135865
 Conc: 6.76 ug/ml



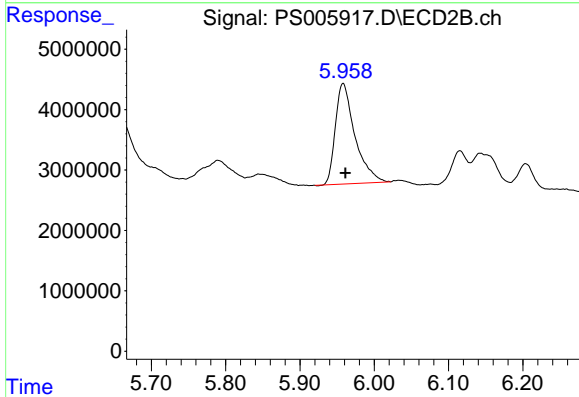
#7 MCPA
 R.T.: 0.000 min
 Exp R.T. : 5.681 min
 Response: 0
 Conc: N.D.



#8 DICHLORPROP

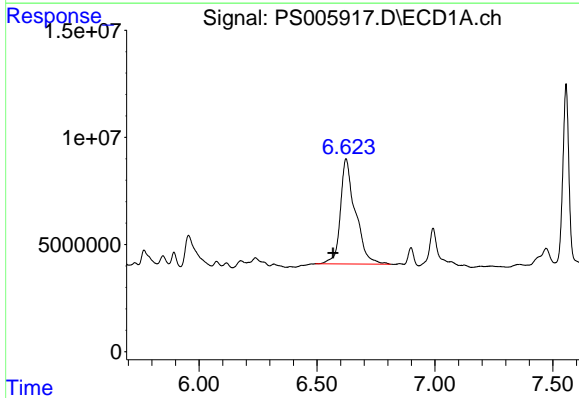
R.T.: 0.000 min
 Exp R.T.: 6.352 min
 Response: 0
 Conc: N.D.

Instrument :
 ECD_S
 ClientSampleId :



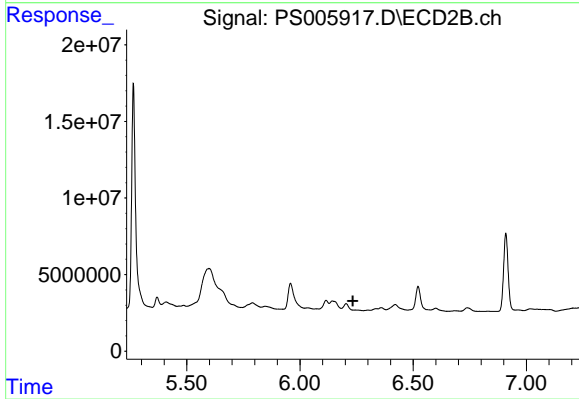
#8 DICHLORPROP

R.T.: 5.958 min
 Delta R.T.: -0.003 min
 Response: 30483709
 Conc: 33.01 ng/ml



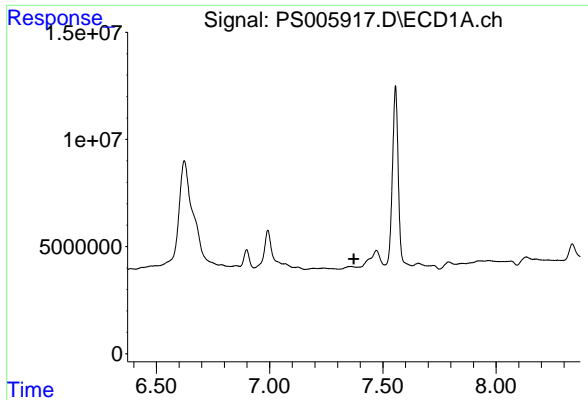
#9 2,4-D

R.T.: 6.623 min
 Delta R.T.: 0.054 min
 Response: 216544942
 Conc: 144.49 ng/ml



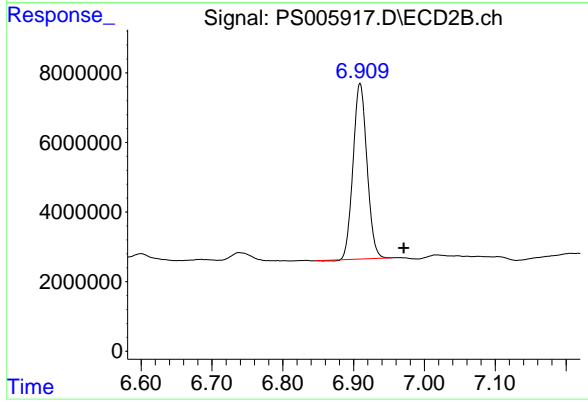
#9 2,4-D

R.T.: 0.000 min
 Exp R.T.: 6.234 min
 Response: 0
 Conc: N.D.



#11 2,4,5-TP (SILVEX)
R.T.: 0.000 min
Exp R.T.: 7.372 min
Response: 0
Conc: N.D.

Instrument :
ECD_S
ClientSampleId :



#11 2,4,5-TP (SILVEX)
R.T.: 6.909 min
Delta R.T.: -0.061 min
Response: 68792900
Conc: 13.26 ng/ml