

Data Path : Z:\pestpcbsrv\HPCHEM1\ECD_S\Data\PS080719\
 Data File : PS005956.D
 Signal(s) : Signal #1: ECD1A.ch Signal #2: ECD2B.ch
 Acq On : 07 Aug 2019 19:44
 Operator : SM\AJ
 Sample : K4135-31
 Misc :
 ALS Vial : 58 Sample Multiplier: 1

Instrument :
 ECD_S
 ClientSampleId :

Integration File signal 1: autoint1.e
 Integration File signal 2: autoint2.e
 Quant Time: Aug 08 05:29:14 2019
 Quant Method : Z:\pestpcbsrv\HPCHEM1\ECD_S\Method\PS072619.M
 Quant Title : 8080.M
 QLast Update : Sat Jul 27 00:42:55 2019
 Response via : Initial Calibration
 Integrator: ChemStation

Volume Inj. : 2 µl
 Signal #1 Phase : Rtx-CLPesticides Signal #2 Phase: Rtx-CLPesticides2
 Signal #1 Info : 30M x 0.32mm x0.5 Signal #2 Info : 30M x 0.32mm x 0.25µm

Compound	RT#1	RT#2	Resp#1	Resp#2	ng/ml	ng/ml

System Monitoring Compounds						
4) S 2,4-DCAA	5.591	5.312	682.1E6	472.5E6	470.180	475.062
Target Compounds						
1) T Dalapon	2.093	0.000	22505520	0	12.143	N.D. #
2) T 3,5-DICHL...	0.000	4.631	0	158.2E6	N.D.	121.981
3) T 4-Nitroph...	0.000	4.898	0	13517715	N.D.	27.287
5) T DICAMBA	5.778	0.000	3096914	0	<MDL	N.D. #
7) T MCPA	0.000	5.642	0	136.1E6	N.D.	32.333
9) T 2,4-D	0.000	6.164	0	4421105	N.D.	4.115
10) T Pentachlo...	0.000	6.571	0	29367472	N.D.	2.262
11) T 2,4,5-TP ...	0.000	6.961	0	44799718	N.D.	8.636
12) T 2,4,5-T	7.602	0.000	124.6E6	0	14.927	N.D. #

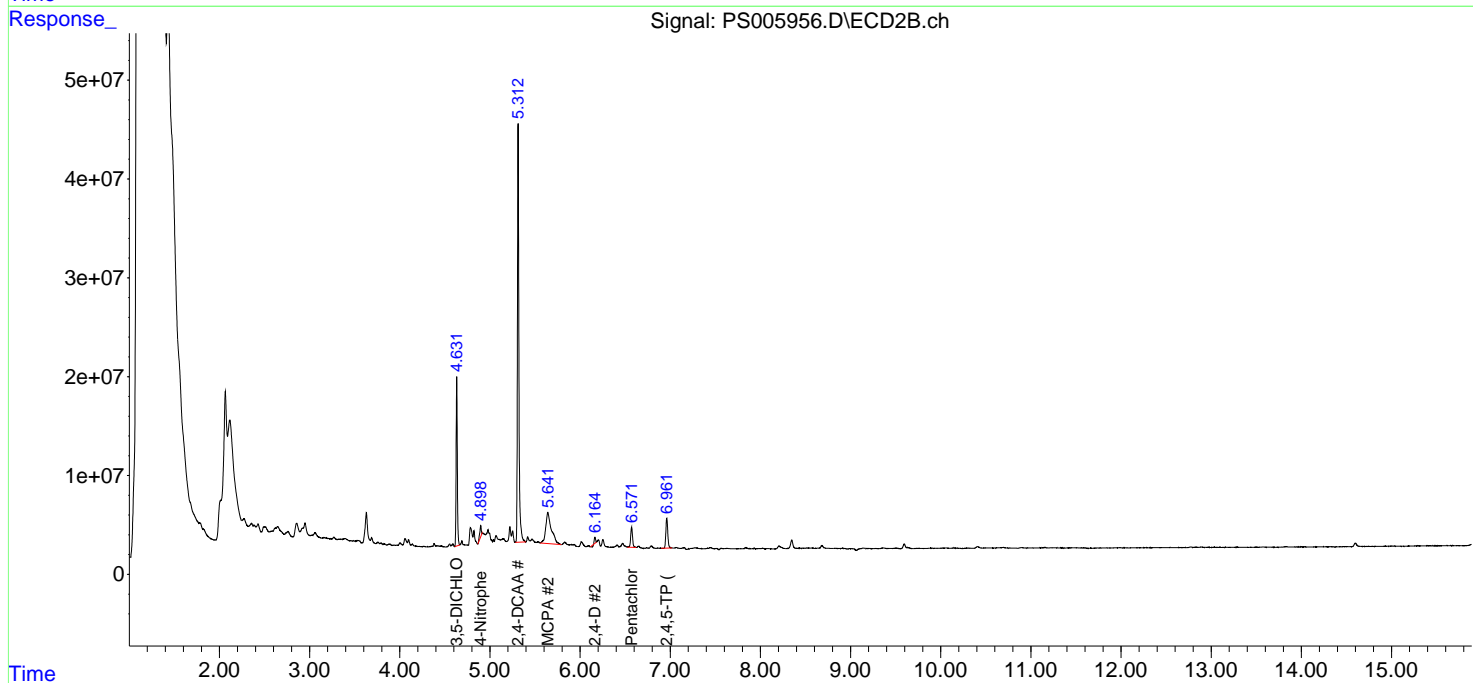
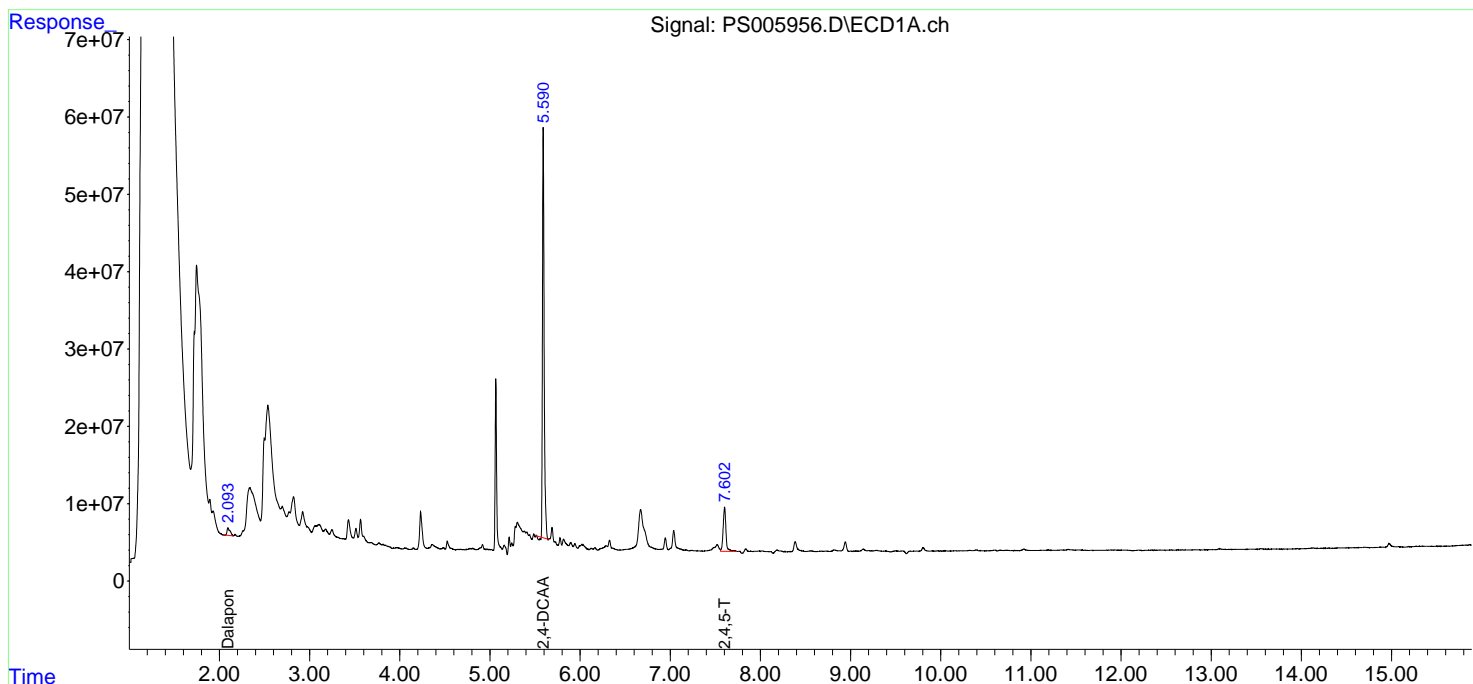
(f)=RT Delta > 1/2 Window (#)=Amounts differ by > 25% (m)=manual int.

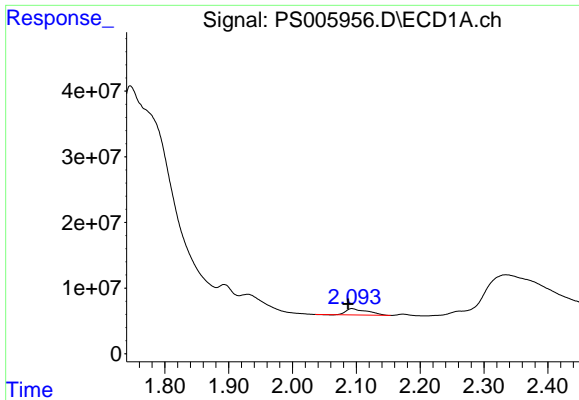
Data Path : Z:\pestpcbsrv\HPCHEM1\ECD_S\Data\PS080719\
 Data File : PS005956.D
 Signal(s) : Signal #1: ECD1A.ch Signal #2: ECD2B.ch
 Acq On : 07 Aug 2019 19:44
 Operator : SM\AJ
 Sample : K4135-31
 Misc :
 ALS Vial : 58 Sample Multiplier: 1

Instrument :
 ECD_S
 ClientSampled :

Integration File signal 1: autoint1.e
 Integration File signal 2: autoint2.e
 Quant Time: Aug 08 05:29:14 2019
 Quant Method : Z:\pestpcbsrv\HPCHEM1\ECD_S\Method\PS072619.M
 Quant Title : 8080.M
 QLast Update : Sat Jul 27 00:42:55 2019
 Response via : Initial Calibration
 Integrator: ChemStation

Volume Inj. : 2 µl
 Signal #1 Phase : Rtx-CLPesticides Signal #2 Phase: Rtx-CLPesticides2
 Signal #1 Info : 30M x 0.32mm x 0.5 Signal #2 Info : 30M x 0.32mm x 0.25µm

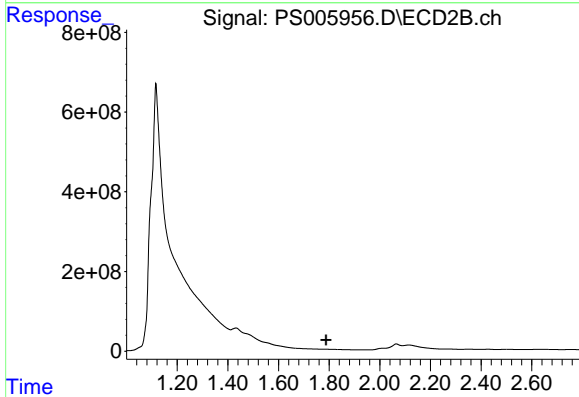




#1 Dalapon

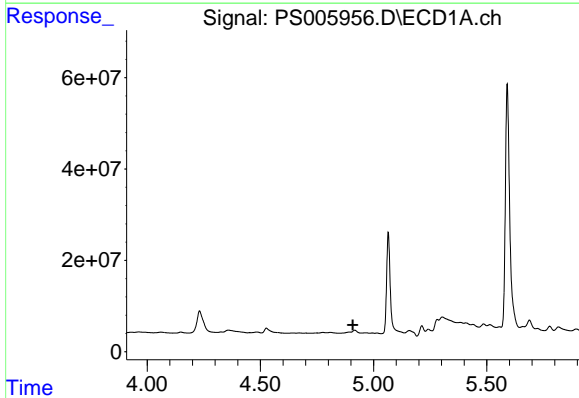
R.T.: 2.093 min
 Delta R.T.: 0.006 min
 Response: 22505520
 Conc: 12.14 ng/ml

Instrument :
 ECD_S
 ClientSampleId :



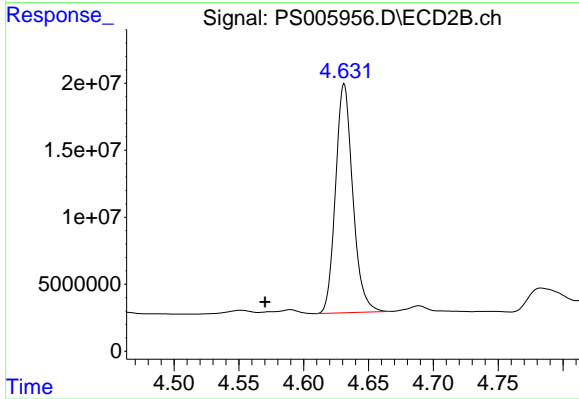
#1 Dalapon

R.T.: 0.000 min
 Exp R.T. : 1.788 min
 Response: 0
 Conc: N.D.



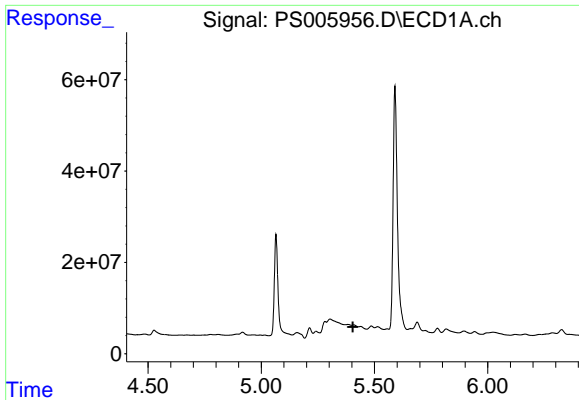
#2 3,5-DICHLOROBENZOIC ACID

R.T.: 0.000 min
 Exp R.T. : 4.909 min
 Response: 0
 Conc: N.D.



#2 3,5-DICHLOROBENZOIC ACID

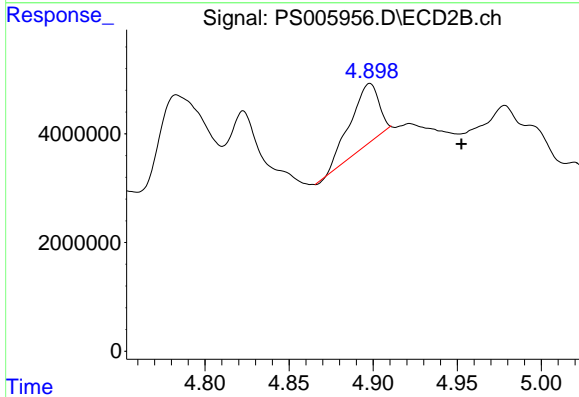
R.T.: 4.631 min
 Delta R.T.: 0.061 min
 Response: 158247339
 Conc: 121.98 ng/ml



#3 4-Nitrophenol

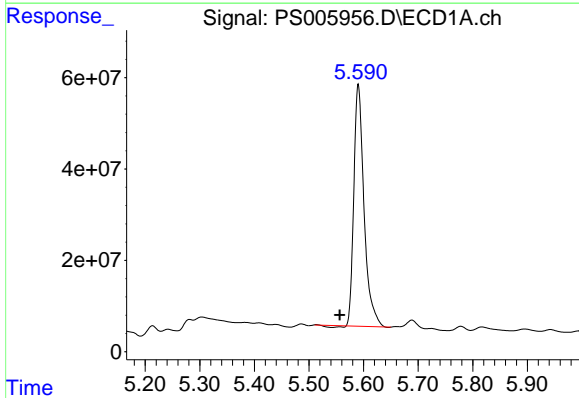
R.T.: 0.000 min
 Exp R.T.: 5.405 min
 Response: 0
 Conc: N.D.

Instrument :
 ECD_S
 ClientSampleId :



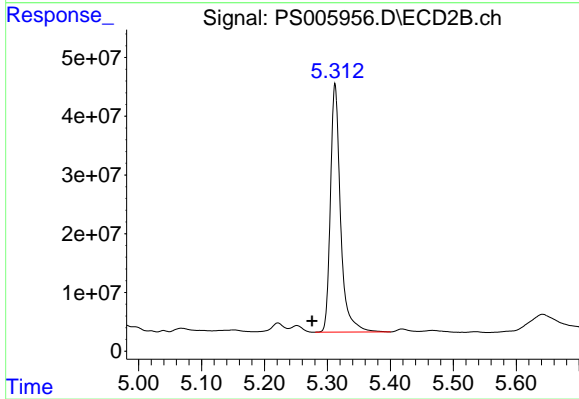
#3 4-Nitrophenol

R.T.: 4.898 min
 Delta R.T.: -0.055 min
 Response: 13517715
 Conc: 27.29 ng/ml



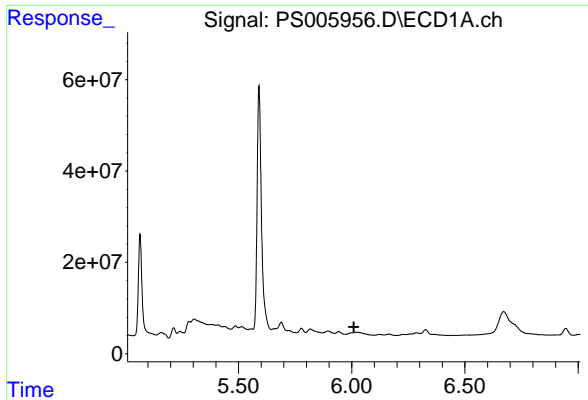
#4 2,4-DCAA

R.T.: 5.591 min
 Delta R.T.: 0.034 min
 Response: 682145984
 Conc: 470.18 ng/ml



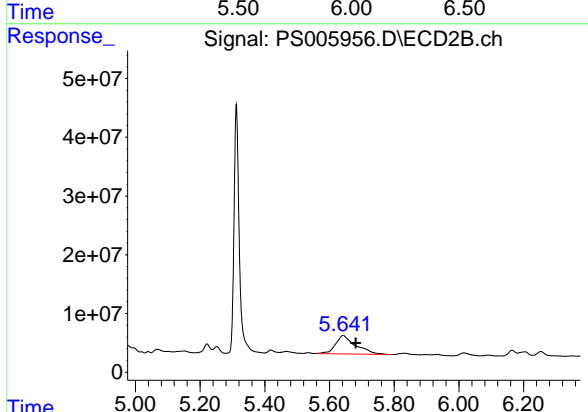
#4 2,4-DCAA

R.T.: 5.312 min
 Delta R.T.: 0.037 min
 Response: 472533427
 Conc: 475.06 ng/ml

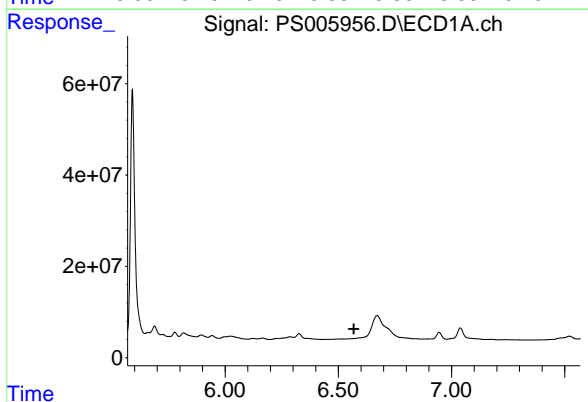


#7 MCPA
 R.T.: 0.000 min
 Exp R.T.: 6.009 min
 Response: 0
 Conc: N.D.

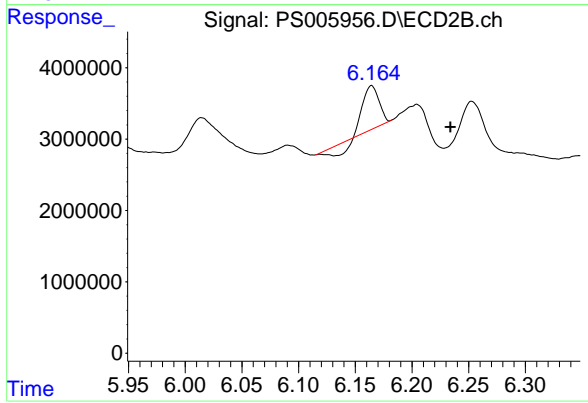
Instrument :
 ECD_S
 ClientSampleId :



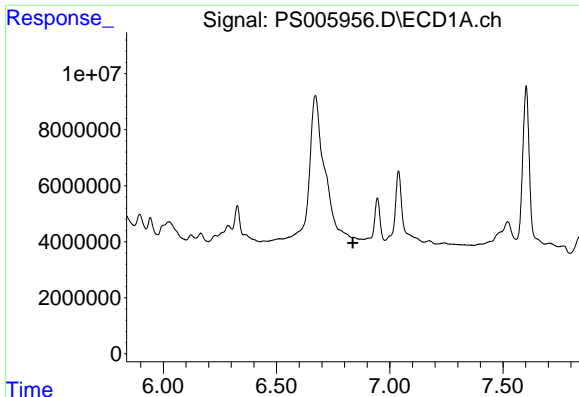
#7 MCPA
 R.T.: 5.642 min
 Delta R.T.: -0.039 min
 Response: 136089404
 Conc: 32.33 ug/ml



#9 2,4-D
 R.T.: 0.000 min
 Exp R.T.: 6.569 min
 Response: 0
 Conc: N.D.



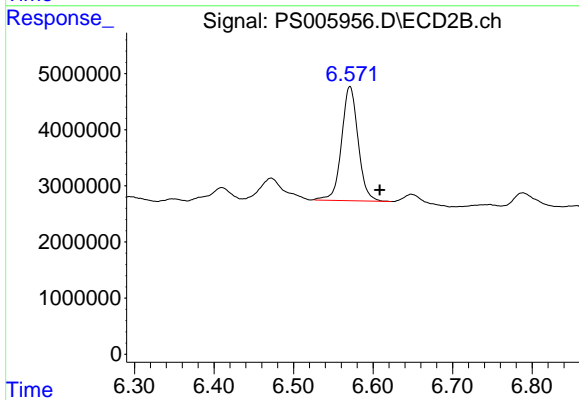
#9 2,4-D
 R.T.: 6.164 min
 Delta R.T.: -0.069 min
 Response: 4421105
 Conc: 4.12 ng/ml



#10 Pentachlorophenol

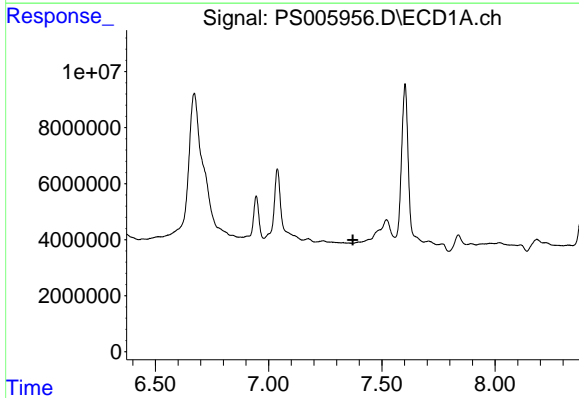
R.T.: 0.000 min
 Exp R.T. : 6.837 min
 Response: 0
 Conc: N.D.

Instrument :
 ECD_S
 ClientSampleId :



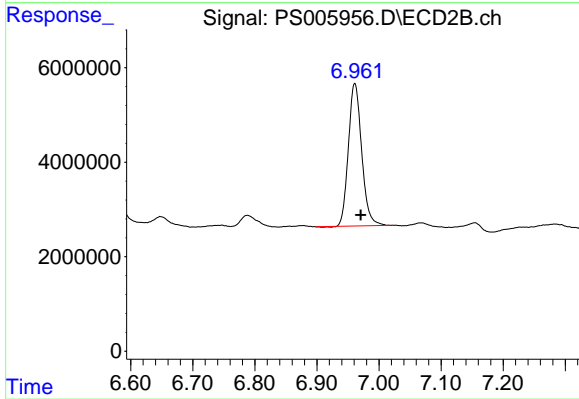
#10 Pentachlorophenol

R.T.: 6.571 min
 Delta R.T.: -0.037 min
 Response: 29367472
 Conc: 2.26 ng/ml



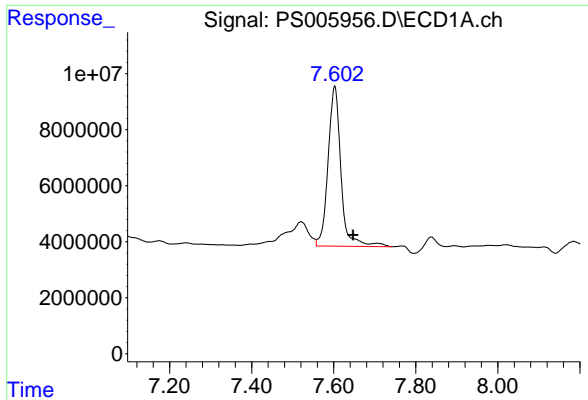
#11 2,4,5-TP (SILVEX)

R.T.: 0.000 min
 Exp R.T. : 7.372 min
 Response: 0
 Conc: N.D.



#11 2,4,5-TP (SILVEX)

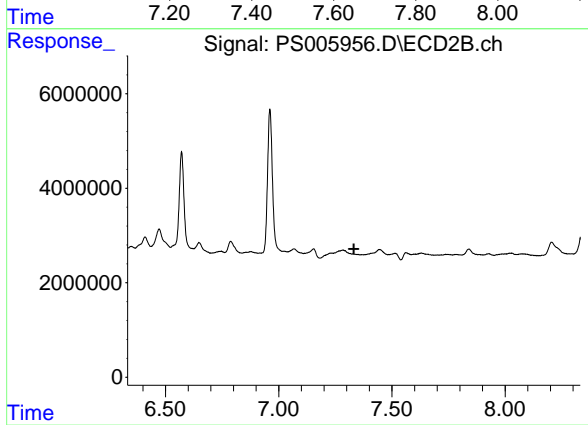
R.T.: 6.961 min
 Delta R.T.: -0.010 min
 Response: 44799718
 Conc: 8.64 ng/ml



#12 2,4,5-T

R.T.: 7.602 min
Delta R.T.: -0.044 min
Response: 124594029
Conc: 14.93 ng/ml

Instrument :
ECD_S
ClientSampleId :



#12 2,4,5-T

R.T.: 0.000 min
Exp R.T. : 7.332 min
Response: 0
Conc: N.D.