

Data Path : Z:\pestpcbsrv\HPCHEM1\ECD_S\Data\PS080822\
 Data File : PS020219.D
 Signal(s) : Signal #1: ECD1A.ch Signal #2: ECD2B.ch
 Acq On : 08 Aug 2022 09:31
 Operator : AJ\MA
 Sample : HEXANE
 Misc :
 ALS Vial : 1 Sample Multiplier: 1

Instrument :
 ECD_S
 ClientSampleId :

Integration File signal 1: autoint1.e
 Integration File signal 2: autoint2.e
 Quant Time: Aug 08 11:57:49 2022
 Quant Method : Z:\pestpcbsrv\HPCHEM1\ECD_S\Method\PS080322.M
 Quant Title : 8080.M
 QLast Update : Thu Aug 04 02:05:37 2022
 Response via : Initial Calibration
 Integrator: ChemStation

Volume Inj. : 2 µl
 Signal #1 Phase : Rtx-CLPesticides Signal #2 Phase: Rtx-CLPesticides2
 Signal #1 Info : 30M x 0.32mm x0.5 Signal #2 Info : 30M x 0.32mm x 0.25µm

| | Compound | RT#1 | RT#2 | Resp#1 | Resp#2 | ng/ml | ng/ml | |
|-----------------------------|--------------|---------|--------|----------|----------|-------|-------|---|
| ----- | | | | | | | | |
| System Monitoring Compounds | | | | | | | | |
| 4) S | 2,4-DCAA | 7.116f | 0.000 | 492892 | 0 | <MDL | N.D. | # |
| Target Compounds | | | | | | | | |
| 1) T | Dalapon | 3.036 | 0.000 | 1055072 | 0 | <MDL | N.D. | # |
| 2) T | 3,5-DICHL... | 6.449f | 0.000 | 3053109 | 0 | <MDL | N.D. | # |
| 3) T | 4-Nitroph... | 7.087f | 0.000 | 33273 | 0 | <MDL | N.D. | # |
| 5) T | DICAMBA | 7.366 | 0.000 | 887201 | 0 | <MDL | N.D. | # |
| 6) T | MCP P | 7.561 | 0.000 | 707677 | 0 | <MDL | N.D. | # |
| 7) T | MCPA | 7.696 | 0.000 | 148167 | 0 | <MDL | N.D. | # |
| 9) T | 2,4-D | 8.363f | 0.000 | 10891859 | 0 | 3.617 | N.D. | # |
| 10) T | Pentachlo... | 8.600 | 0.000 | 107925 | 0 | <MDL | N.D. | # |
| 11) T | 2,4,5-TP ... | 9.153 | 0.000 | 931249 | 0 | <MDL | N.D. | # |
| 12) T | 2,4,5-T | 9.382f | 0.000 | 25528318 | 0 | 1.406 | N.D. | # |
| 13) T | 2,4-DB | 9.955 | 0.000 | 4023524 | 0 | 1.102 | N.D. | # |
| 14) T | DINOSEB | 11.200f | 0.000 | 159201 | 0 | <MDL | N.D. | # |
| 15) T | Picloram | 11.002 | 10.830 | 90163781 | 16256227 | 2.852 | 2.155 | |
| 16) T | DCPA | 11.406 | 0.000 | 1827499 | 0 | <MDL | N.D. | # |
| ----- | | | | | | | | |

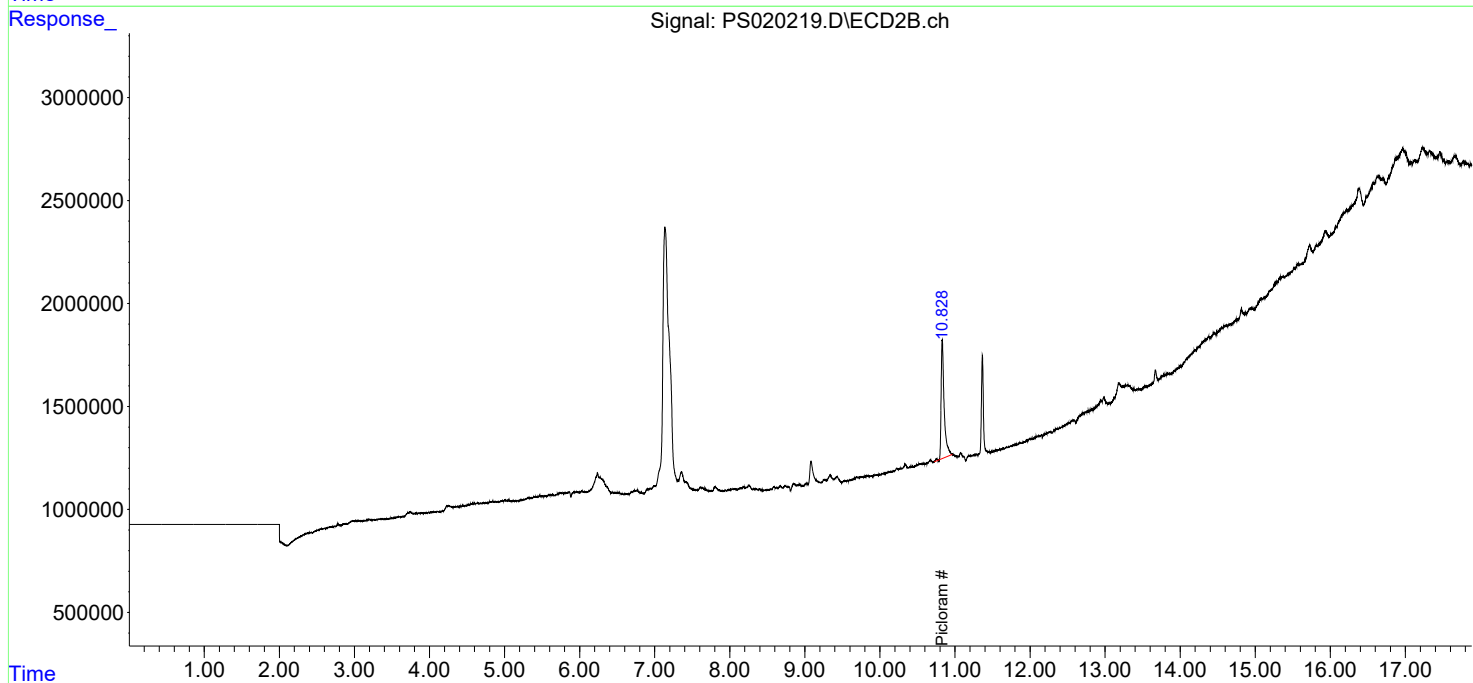
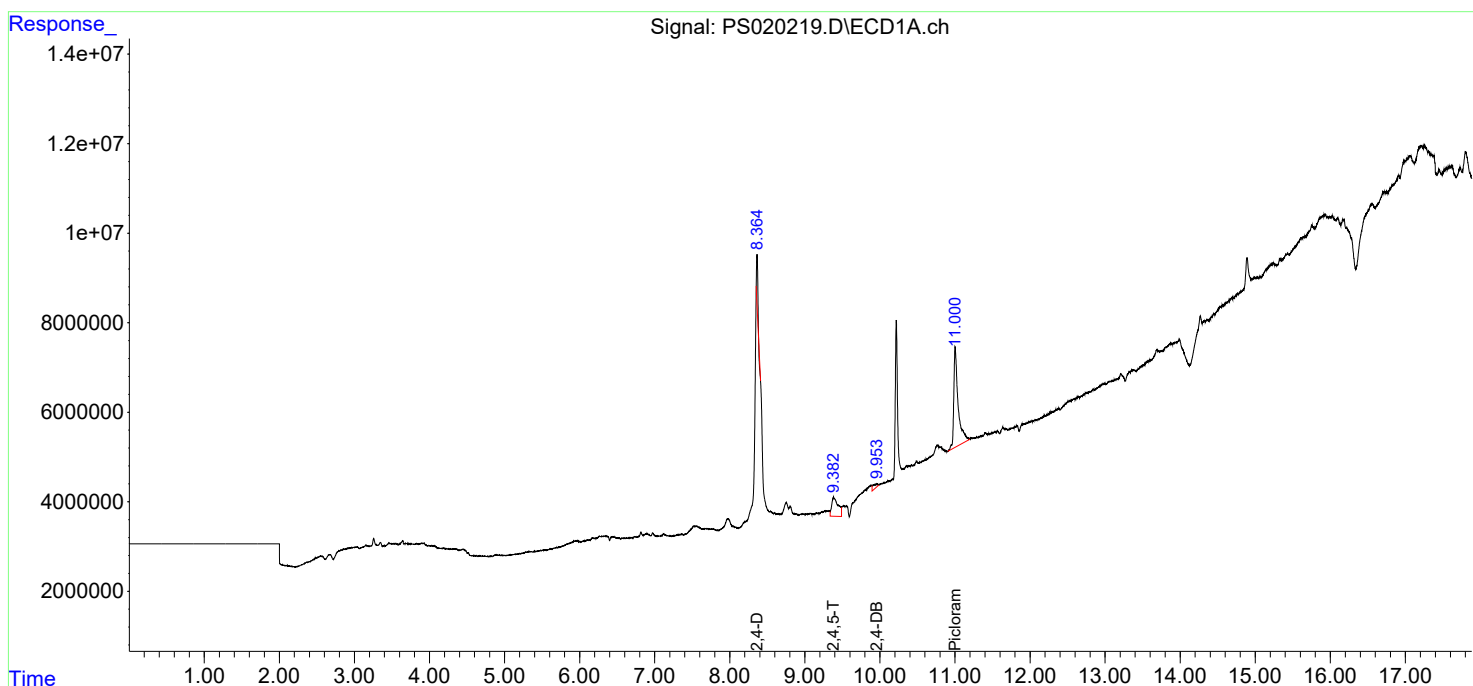
(f)=RT Delta > 1/2 Window (#)=Amounts differ by > 25% (m)=manual int.

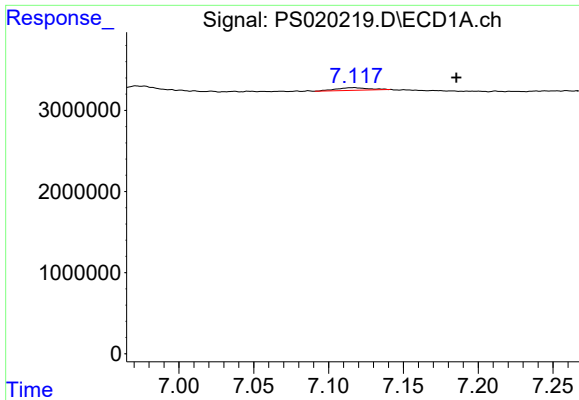
Data Path : Z:\pestpcbsrv\HPCHEM1\ECD_S\Data\PS080822\
 Data File : PS020219.D
 Signal(s) : Signal #1: ECD1A.ch Signal #2: ECD2B.ch
 Acq On : 08 Aug 2022 09:31
 Operator : AJ\MA
 Sample : HEXANE
 Misc :
 ALS Vial : 1 Sample Multiplier: 1

Instrument :
 ECD_S
 ClientSampleId :

Integration File signal 1: autoint1.e
 Integration File signal 2: autoint2.e
 Quant Time: Aug 08 11:57:49 2022
 Quant Method : Z:\pestpcbsrv\HPCHEM1\ECD_S\Method\PS080322.M
 Quant Title : 8080.M
 QLast Update : Thu Aug 04 02:05:37 2022
 Response via : Initial Calibration
 Integrator: ChemStation

Volume Inj. : 2 µl
 Signal #1 Phase : Rtx-CLPesticides Signal #2 Phase: Rtx-CLPesticides2
 Signal #1 Info : 30M x 0.32mm x0.5 Signal #2 Info : 30M x 0.32mm x 0.25µm

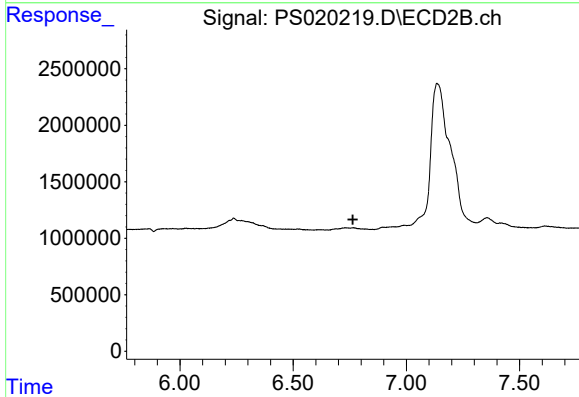




#4 2,4-DCAA

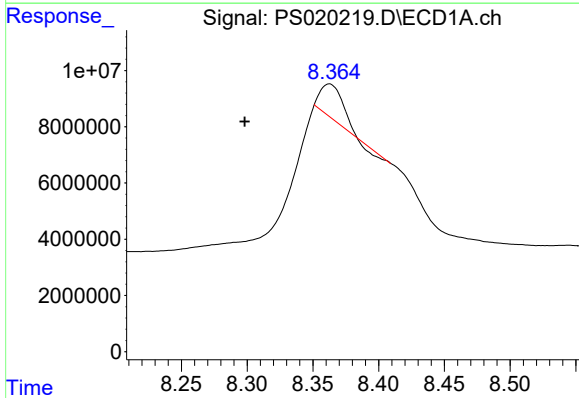
R.T.: 7.116 min
 Delta R.T.: -0.069 min
 Response: 492892
 Conc: N.D.

Instrument :
 ECD_S
 ClientSampleId :



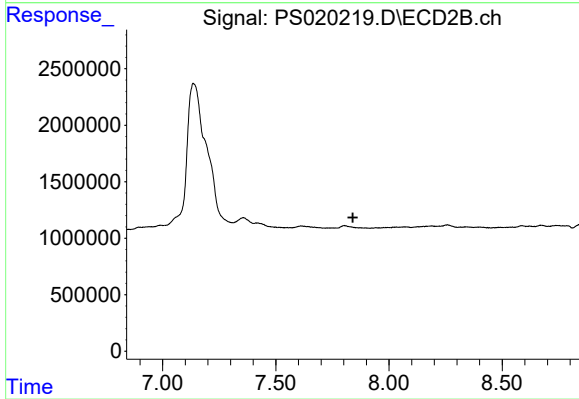
#4 2,4-DCAA

R.T.: 0.000 min
 Exp R.T. : 6.763 min
 Response: 0
 Conc: N.D.



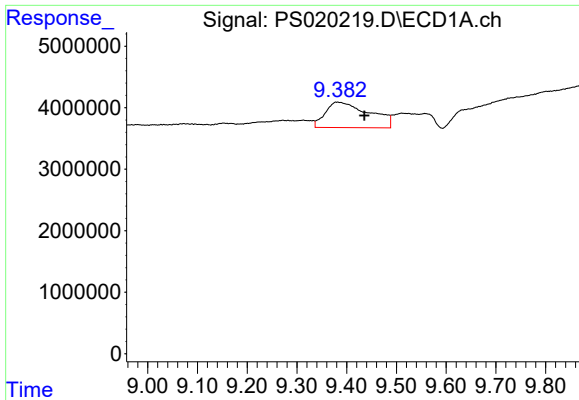
#9 2,4-D

R.T.: 8.363 min
 Delta R.T.: 0.064 min
 Response: 10891859
 Conc: 3.62 ng/ml



#9 2,4-D

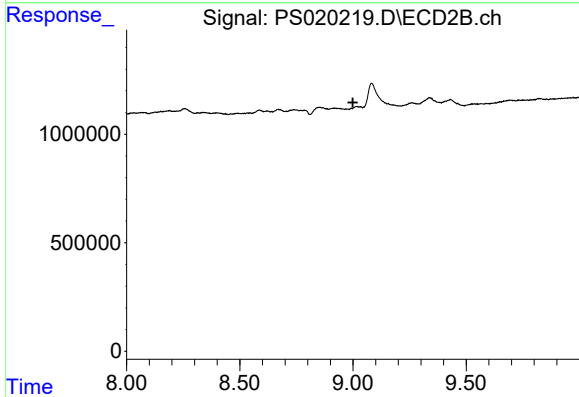
R.T.: 0.000 min
 Exp R.T. : 7.840 min
 Response: 0
 Conc: N.D.



#12 2,4,5-T

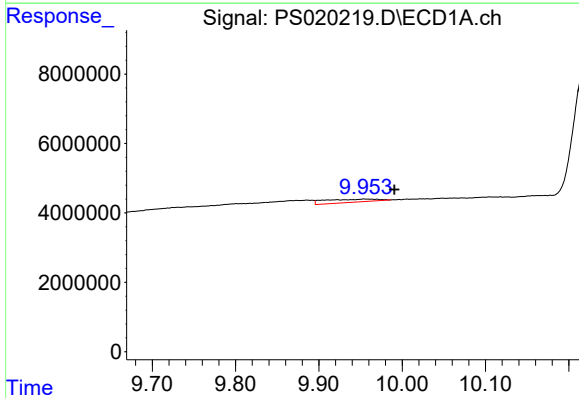
R.T.: 9.382 min
 Delta R.T.: -0.054 min
 Response: 25528318
 Conc: 1.41 ng/ml

Instrument :
 ECD_S
 ClientSampleId :



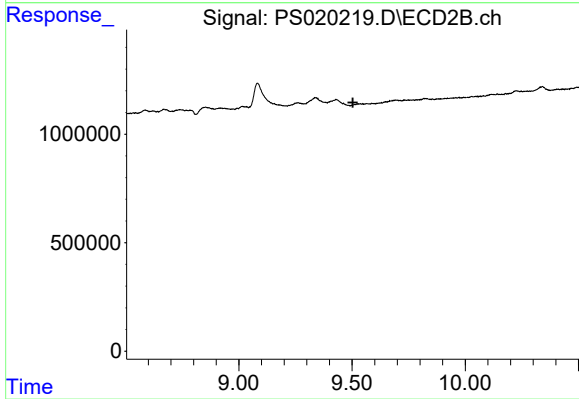
#12 2,4,5-T

R.T.: 0.000 min
 Exp R.T. : 8.999 min
 Response: 0
 Conc: N.D.



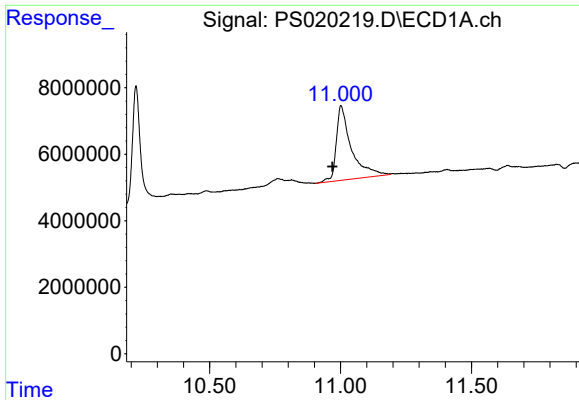
#13 2,4-DB

R.T.: 9.955 min
 Delta R.T.: -0.036 min
 Response: 4023524
 Conc: 1.10 ng/ml



#13 2,4-DB

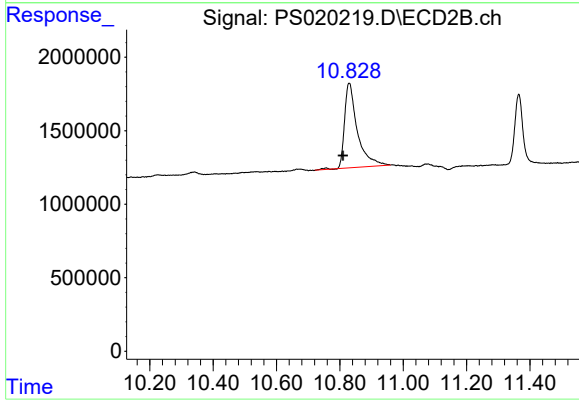
R.T.: 0.000 min
 Exp R.T. : 9.503 min
 Response: 0
 Conc: N.D.



#15 Picloram

R.T.: 11.002 min
Delta R.T.: 0.032 min
Response: 90163781
Conc: 2.85 ng/ml

Instrument :
ECD_S
ClientSampleId :



#15 Picloram

R.T.: 10.830 min
Delta R.T.: 0.020 min
Response: 16256227
Conc: 2.15 ng/ml