

Data Path : Z:\pestpcbsrv\HPCHEM1\ECD\_S\Data\PS080919\  
 Data File : PS005971.D  
 Signal(s) : Signal #1: ECD1A.ch Signal #2: ECD2B.ch  
 Acq On : 09 Aug 2019 12:38  
 Operator : SM\AJ  
 Sample : K3613-04  
 Misc :  
 ALS Vial : 8 Sample Multiplier: 1

**Instrument :**  
 ECD\_S  
**ClientSampleId :**  
 AU-05-080719-B

**Manual Integrations**  
**APPROVED**  
 Ankita  
 8/12/2019 10:18:32 AM

Integration File signal 1: autoint1.e  
 Integration File signal 2: autoint2.e  
 Quant Time: Aug 10 03:07:02 2019  
 Quant Method : Z:\pestpcbsrv\HPCHEM1\ECD\_S\Method\PS072619.M  
 Quant Title : 8080.M  
 QLast Update : Sat Jul 27 00:42:55 2019  
 Response via : Initial Calibration  
 Integrator: ChemStation

Volume Inj. : 2 µl  
 Signal #1 Phase : Rtx-CLPesticides Signal #2 Phase: Rtx-CLPesticides2  
 Signal #1 Info : 30M x 0.32mm x0.5 Signal #2 Info : 30M x 0.32mm x 0.25µm

Compound	RT#1	RT#2	Resp#1	Resp#2	ng/ml	ng/ml
-----						
System Monitoring Compounds						
4) S 2,4-DCAA	5.571	5.291	467.2E6	308.6E6	321.992	310.216m

Target Compounds

(f)=RT Delta > 1/2 Window (#)=Amounts differ by > 25% (m)=manual int.

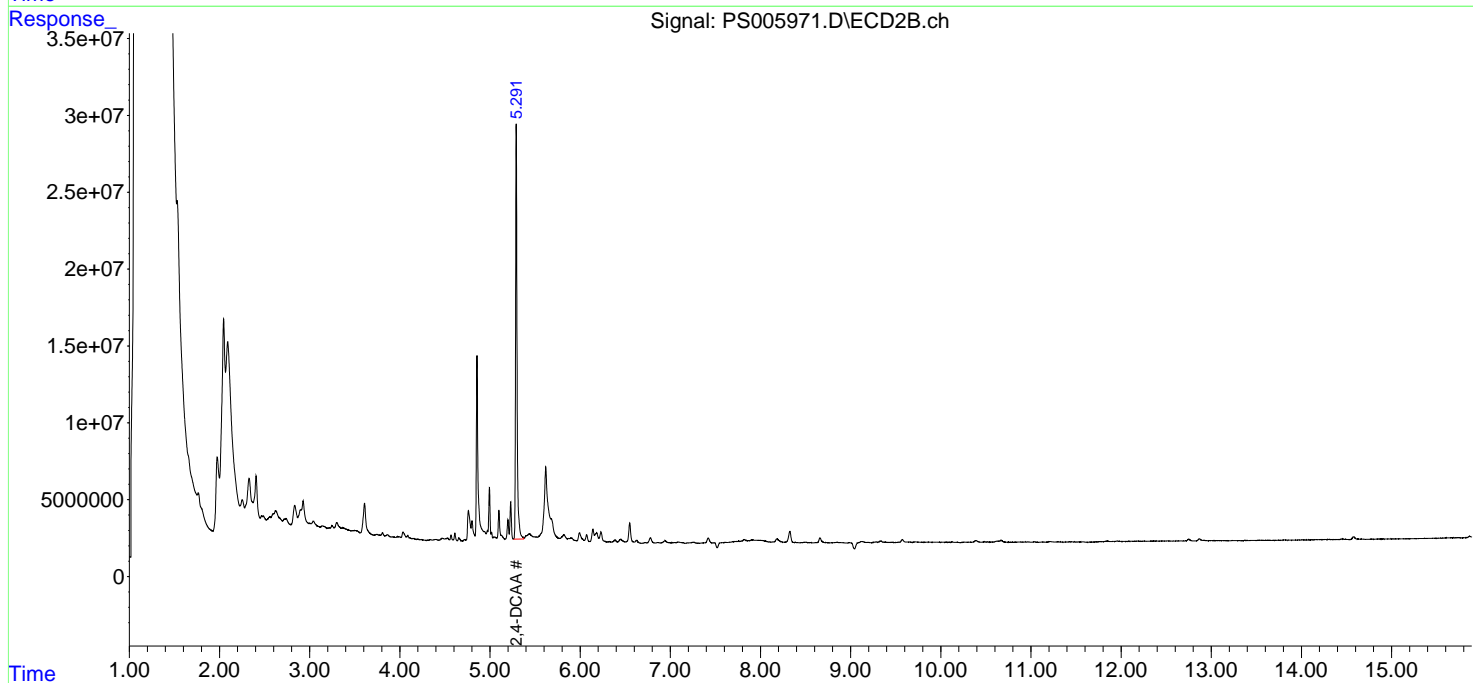
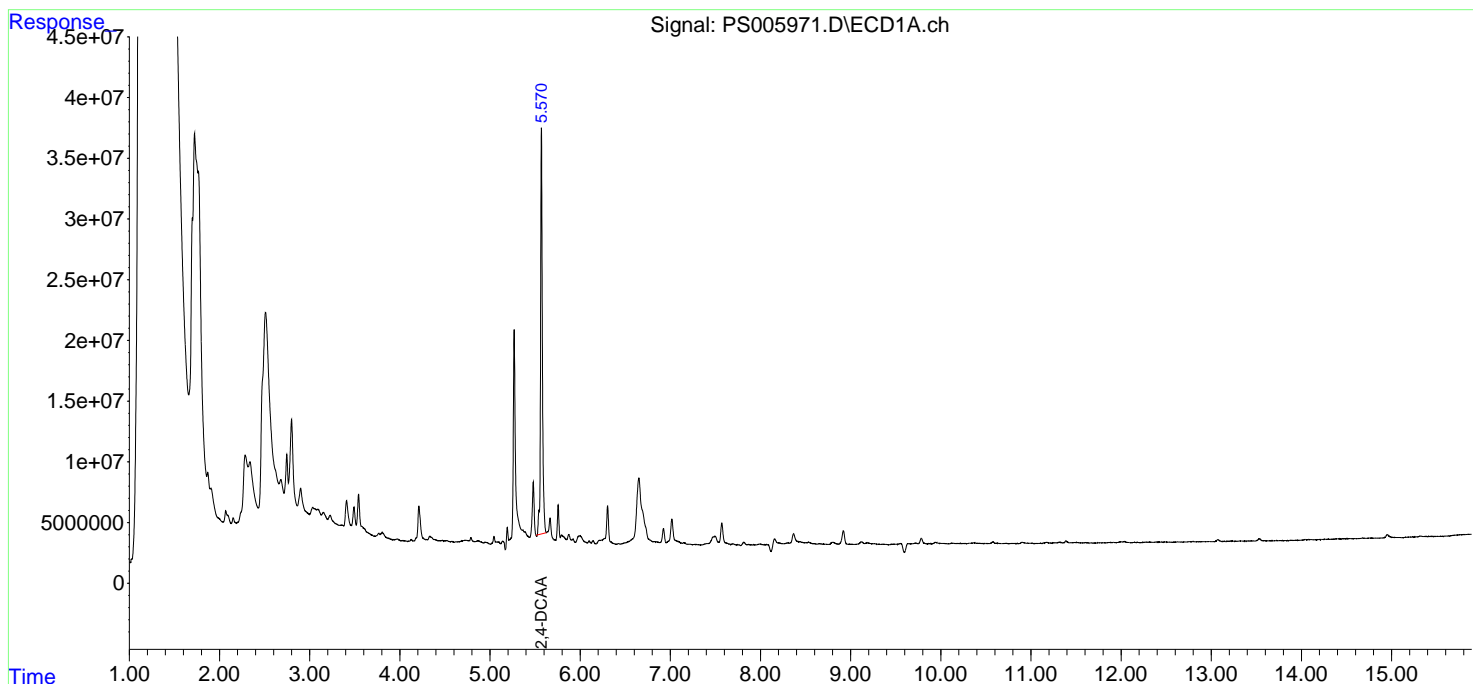
Data Path : Z:\pestpcbsrv\HPCHEM1\ECD\_S\Data\PS080919\  
Data File : PS005971.D  
Signal(s) : Signal #1: ECD1A.ch Signal #2: ECD2B.ch  
Acq On : 09 Aug 2019 12:38  
Operator : SM\AJ  
Sample : K3613-04  
Misc :  
ALS Vial : 8 Sample Multiplier: 1

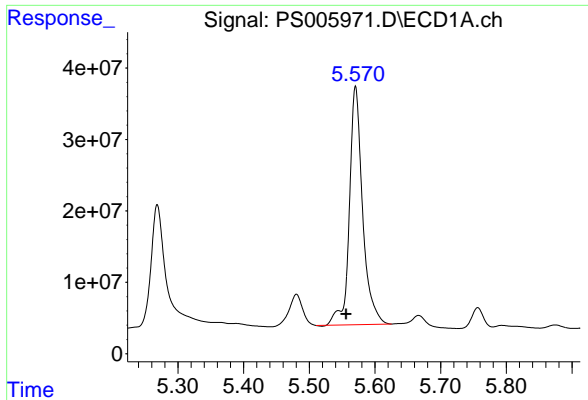
Instrument :  
ECD\_S  
ClientSampleId :  
AU-05-080719-B

Manual Integrations  
APPROVED  
Ankita  
8/12/2019 10:18:32 AM

Integration File signal 1: autoint1.e  
Integration File signal 2: autoint2.e  
Quant Time: Aug 10 03:07:02 2019  
Quant Method : Z:\pestpcbsrv\HPCHEM1\ECD\_S\Method\PS072619.M  
Quant Title : 8080.M  
QLast Update : Sat Jul 27 00:42:55 2019  
Response via : Initial Calibration  
Integrator: ChemStation

Volume Inj. : 2 µl  
Signal #1 Phase : Rtx-CLPesticides Signal #2 Phase: Rtx-CLPesticides2  
Signal #1 Info : 30M x 0.32mm x0.5 Signal #2 Info : 30M x 0.32mm x 0.25µm





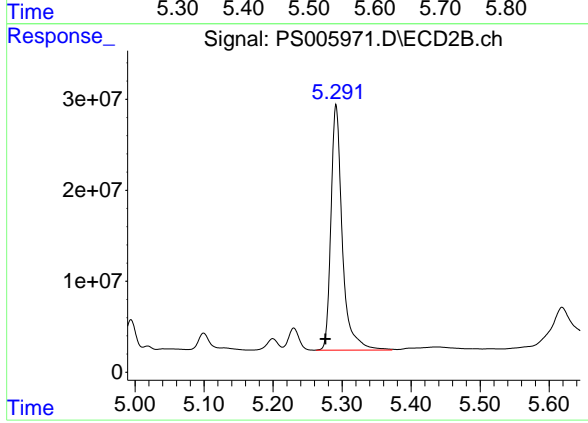
#4 2,4-DCAA

R.T.: 5.571 min  
Delta R.T.: 0.014 min  
Response: 467151861  
Conc: 321.99 ng/ml

Instrument :  
ECD\_S  
ClientSampled :  
AU-05-080719-B

Manual Integrations  
APPROVED

Ankita  
8/12/2019 10:18:32 AM



#4 2,4-DCAA

R.T.: 5.291 min  
Delta R.T.: 0.015 min  
Response: 308565020  
Conc: 310.22 ng/ml m