

Data Path : Z:\pestpcbsrv\HPCHEM1\ECD_S\Data\PS080922\
 Data File : PS020239.D
 Signal(s) : Signal #1: ECD1A.ch Signal #2: ECD2B.ch
 Acq On : 09 Aug 2022 17:14
 Operator : AJ\MA
 Sample : N4068-01
 Misc :
 ALS Vial : 10 Sample Multiplier: 1

Instrument :
 ECD_S
 ClientSampleId :

Integration File signal 1: autoint1.e
 Integration File signal 2: autoint2.e
 Quant Time: Aug 10 01:33:27 2022
 Quant Method : Z:\pestpcbsrv\HPCHEM1\ECD_S\Method\PS080322.M
 Quant Title : 8080.M
 QLast Update : Thu Aug 04 02:05:37 2022
 Response via : Initial Calibration
 Integrator: ChemStation

Volume Inj. : 2 µl
 Signal #1 Phase : Rtx-CLPesticides Signal #2 Phase: Rtx-CLPesticides2
 Signal #1 Info : 30M x 0.32mm x0.5 Signal #2 Info : 30M x 0.32mm x 0.25µm

	Compound	RT#1	RT#2	Resp#1	Resp#2	ng/ml	ng/ml

System Monitoring Compounds							
4) S	2,4-DCAA	7.177	6.756	650.0E6	233.8E6	220.437	286.872 #
Target Compounds							
1) T	Dalapon	2.962f	2.479	190.0E6	45186702	39.237	41.622
2) T	3,5-DICHL...	6.407	5.967	-5080689	137.3E6	N.D.	108.778
3) T	4-Nitroph...	7.027	6.397	70003638	17353656	50.398	35.335 #
5) T	DICAMBA	7.376	6.957	18299474	596121	1.590	<MDL #
6) T	MCP P	7.534	7.009	3088835	6549546	<MDL	2.401 #
7) T	MCPA	7.691	7.213	17167488	31059835	1.333	7.378 #
8) T	DICHLORPROP	8.121f	7.561	31153939	45635981	10.883	48.801 #
9) T	2,4-D	8.290	7.861	22421919	6929907	7.445	5.908
10) T	Pentachlo...	8.659f	8.255	128.3E6	1190042	3.279	<MDL #
11) T	2,4,5-TP ...	9.178	8.648	136.4E6	55605560	8.003	10.396 #
12) T	2,4,5-T	9.414	8.999	14240730	25204682	<MDL	4.951 #
13) T	2,4-DB	10.019	9.508	915.1E6	187.7E6	250.742	275.923
14) T	DINOSEB	11.097	9.825	2392.9E6	308.7E6	150.408	81.350 #
15) T	Picloram	11.002	10.815	1382.1E6	266.3E6	43.712	35.300
16) T	DCPA	11.397	10.746	15790402	42345447	<MDL	6.387 #

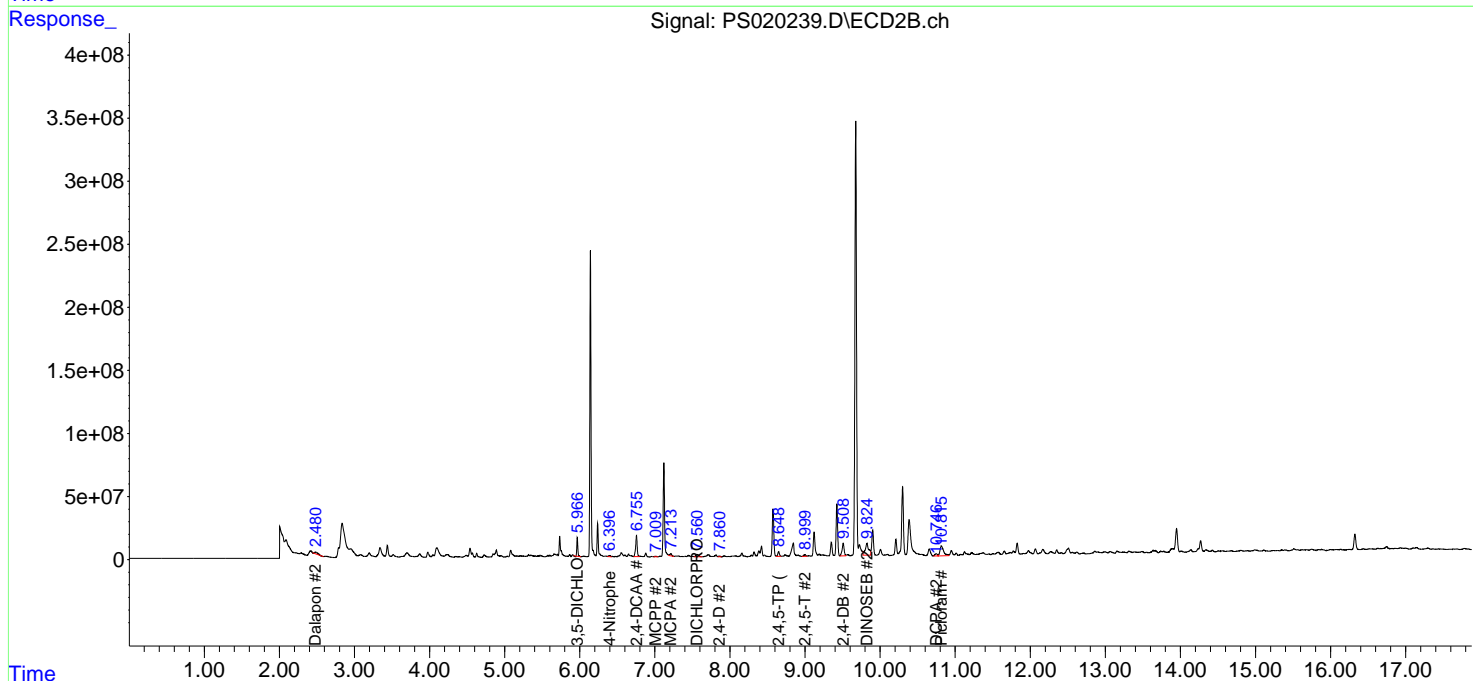
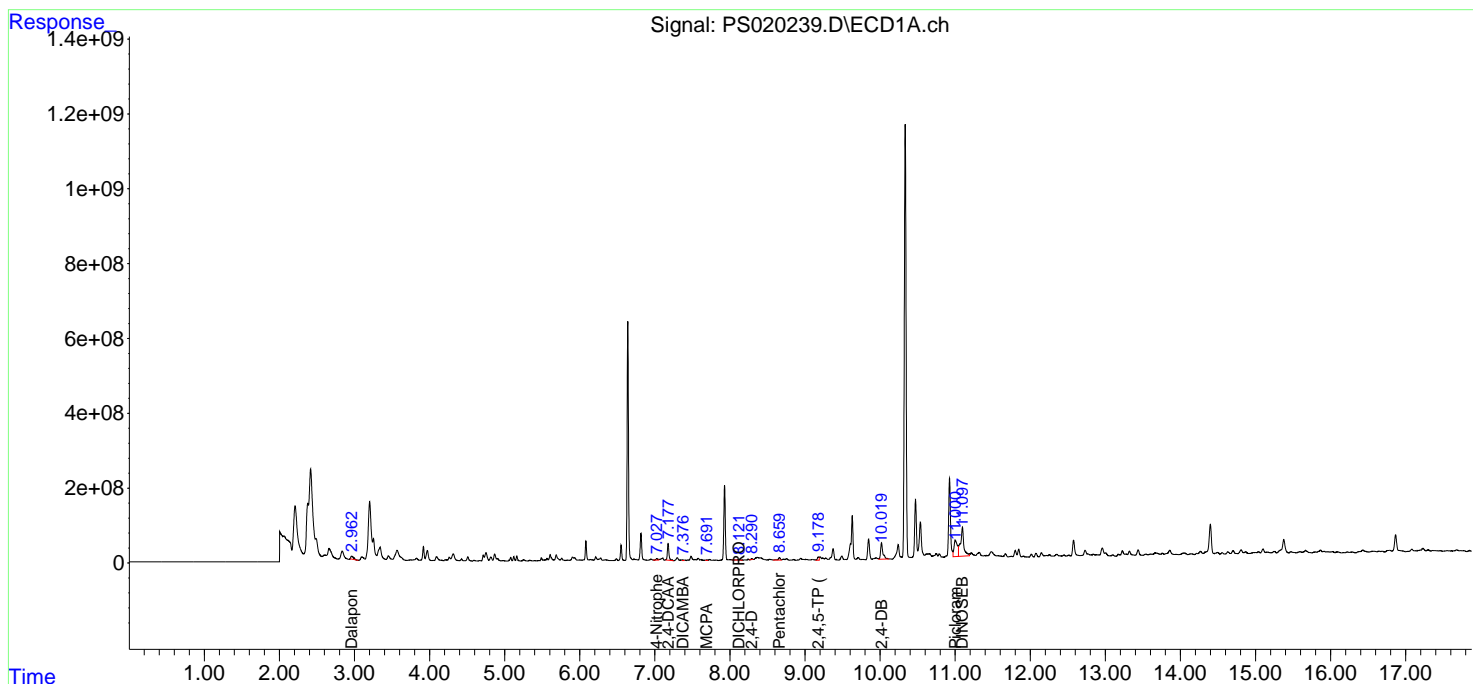
(f)=RT Delta > 1/2 Window (#)=Amounts differ by > 25% (m)=manual int.

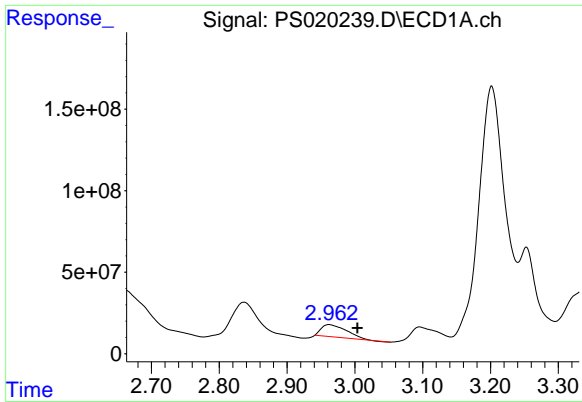
Data Path : Z:\pestpcbsrv\HPCHEM1\ECD_S\Data\PS080922\
 Data File : PS020239.D
 Signal(s) : Signal #1: ECD1A.ch Signal #2: ECD2B.ch
 Acq On : 09 Aug 2022 17:14
 Operator : AJ\MA
 Sample : N4068-01
 Misc :
 ALS Vial : 10 Sample Multiplier: 1

Instrument :
 ECD_S
 ClientSampleId :

Integration File signal 1: autoint1.e
 Integration File signal 2: autoint2.e
 Quant Time: Aug 10 01:33:27 2022
 Quant Method : Z:\pestpcbsrv\HPCHEM1\ECD_S\Method\PS080322.M
 Quant Title : 8080.M
 QLast Update : Thu Aug 04 02:05:37 2022
 Response via : Initial Calibration
 Integrator: ChemStation

Volume Inj. : 2 µl
 Signal #1 Phase : Rtx-CLPesticides Signal #2 Phase: Rtx-CLPesticides2
 Signal #1 Info : 30M x 0.32mm x0.5 Signal #2 Info : 30M x 0.32mm x 0.25µm

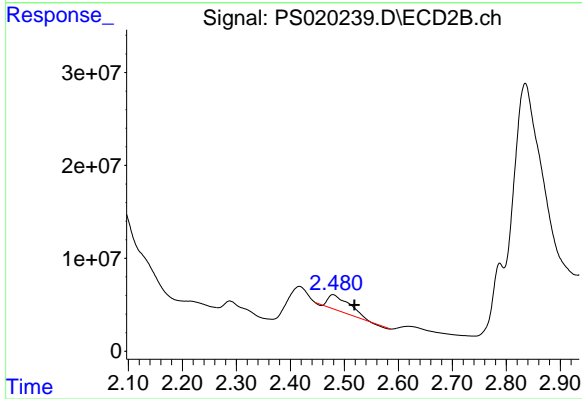




#1 Dalapon

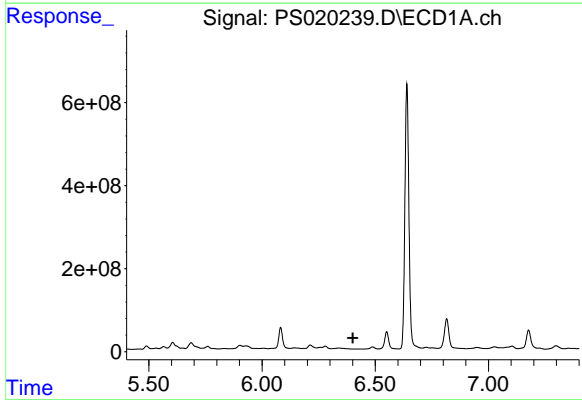
R.T.: 2.962 min
 Delta R.T.: -0.042 min
 Response: 189958303
 Conc: 39.24 ng/ml

Instrument :
 ECD_S
 ClientSampleId :



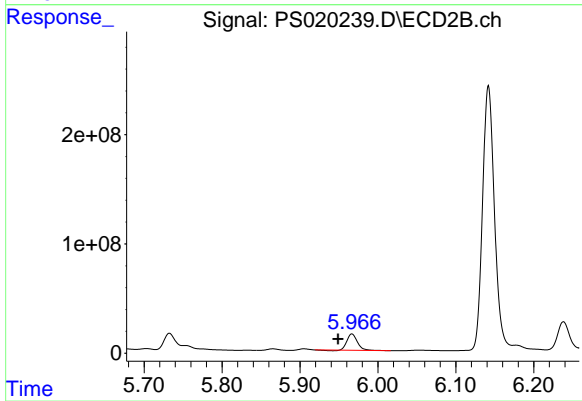
#1 Dalapon

R.T.: 2.479 min
 Delta R.T.: -0.040 min
 Response: 45186702
 Conc: 41.62 ng/ml



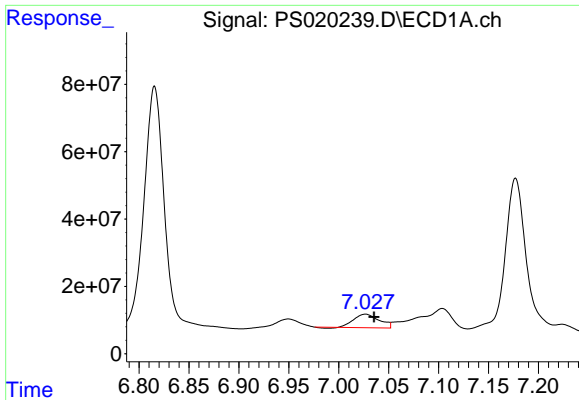
#2 3,5-DICHLOROBENZOIC ACID

R.T.: 6.407 min
 Delta R.T.: 0.006 min
 Response: -5080689
 Conc: N.D.



#2 3,5-DICHLOROBENZOIC ACID

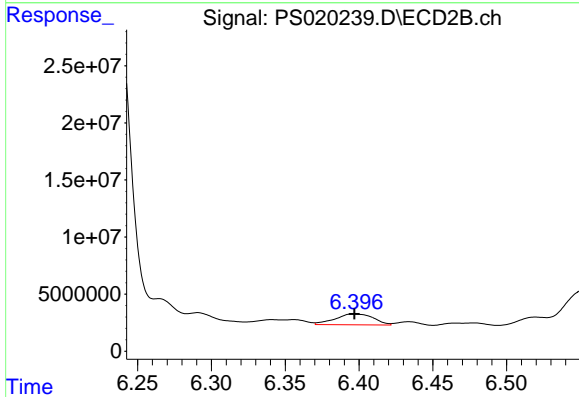
R.T.: 5.967 min
 Delta R.T.: 0.018 min
 Response: 137344324
 Conc: 108.78 ng/ml



#3 4-Nitrophenol

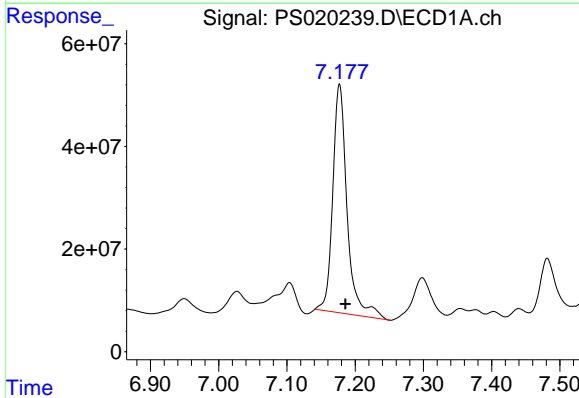
R.T.: 7.027 min
 Delta R.T.: -0.009 min
 Response: 70003638
 Conc: 50.40 ng/ml

Instrument :
 ECD_S
 ClientSampleId :



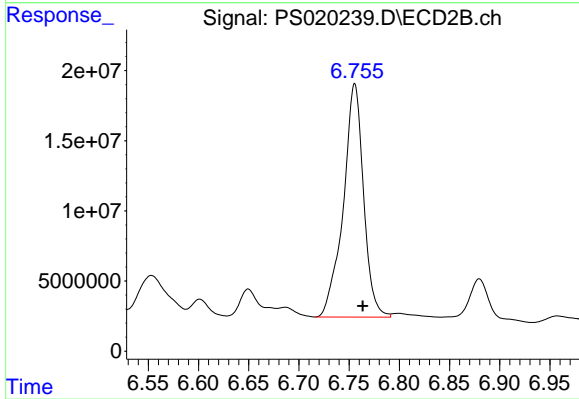
#3 4-Nitrophenol

R.T.: 6.397 min
 Delta R.T.: 0.000 min
 Response: 17353656
 Conc: 35.33 ng/ml



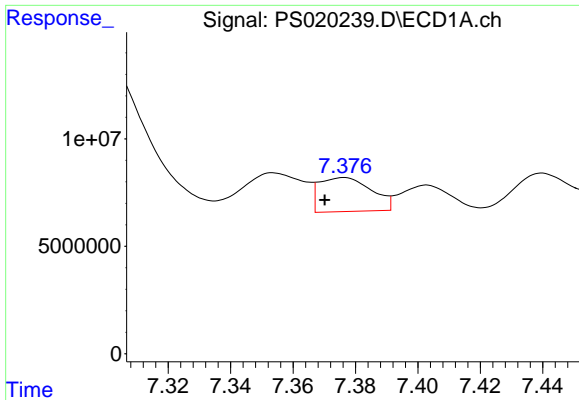
#4 2,4-DCAA

R.T.: 7.177 min
 Delta R.T.: -0.008 min
 Response: 650008409
 Conc: 220.44 ng/ml



#4 2,4-DCAA

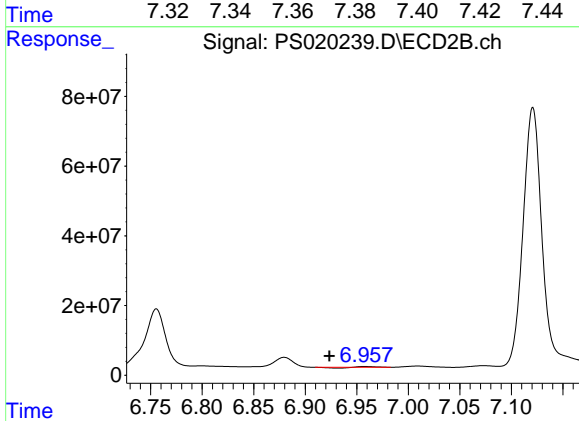
R.T.: 6.756 min
 Delta R.T.: -0.008 min
 Response: 233788378
 Conc: 286.87 ng/ml



#5 DICAMBA

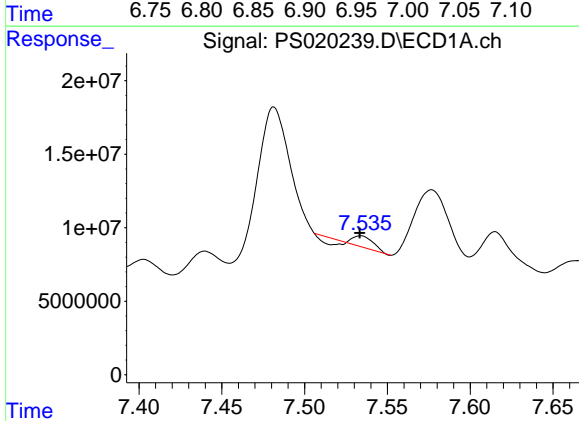
R.T.: 7.376 min
 Delta R.T.: 0.006 min
 Response: 18299474
 Conc: 1.59 ng/ml

Instrument :
 ECD_S
 ClientSampleId :



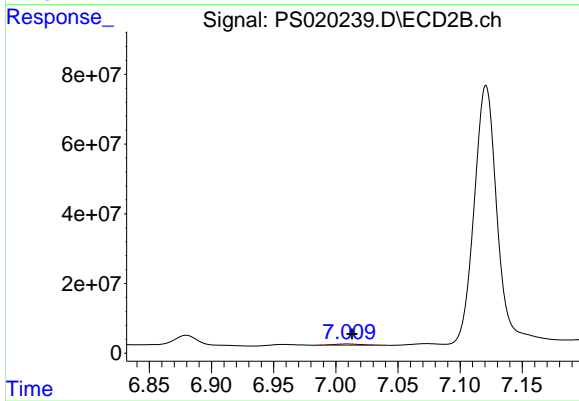
#5 DICAMBA

R.T.: 6.957 min
 Delta R.T.: 0.034 min
 Response: 596121
 Conc: N.D.



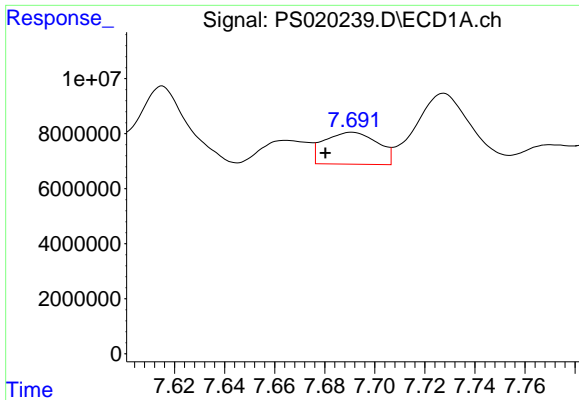
#6 MCPP

R.T.: 7.534 min
 Delta R.T.: 0.000 min
 Response: 3088835
 Conc: N.D.



#6 MCPP

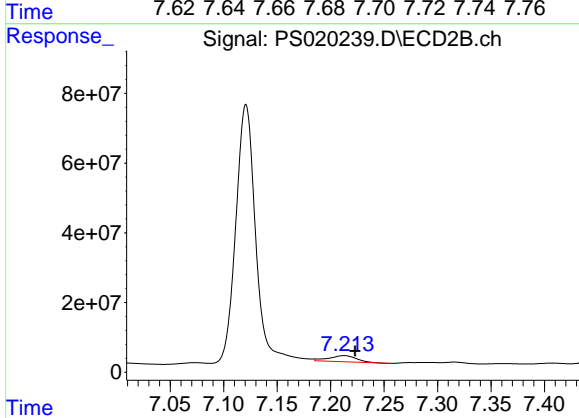
R.T.: 7.009 min
 Delta R.T.: -0.004 min
 Response: 6549546
 Conc: 2.40 ug/ml



#7 MCPA

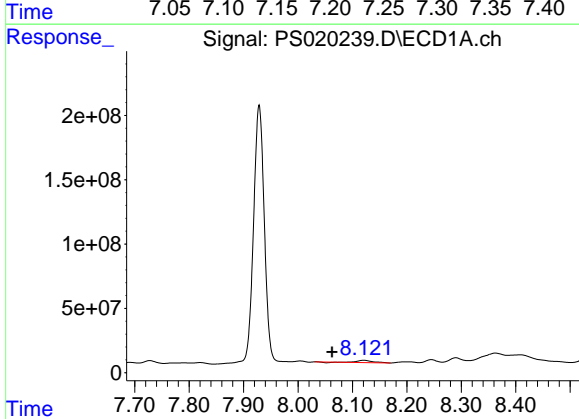
R.T.: 7.691 min
 Delta R.T.: 0.011 min
 Response: 17167488
 Conc: 1.33 ug/ml

Instrument :
 ECD_S
 ClientSampleId :



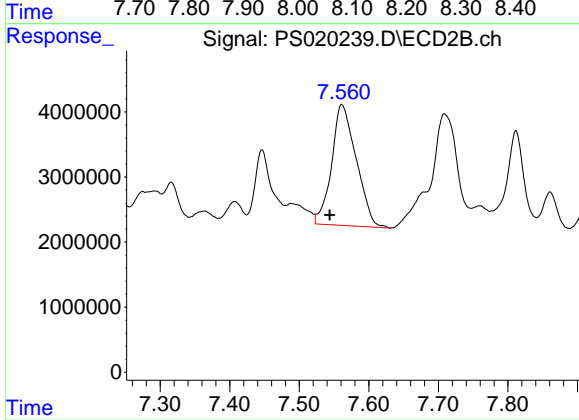
#7 MCPA

R.T.: 7.213 min
 Delta R.T.: -0.010 min
 Response: 31059835
 Conc: 7.38 ug/ml



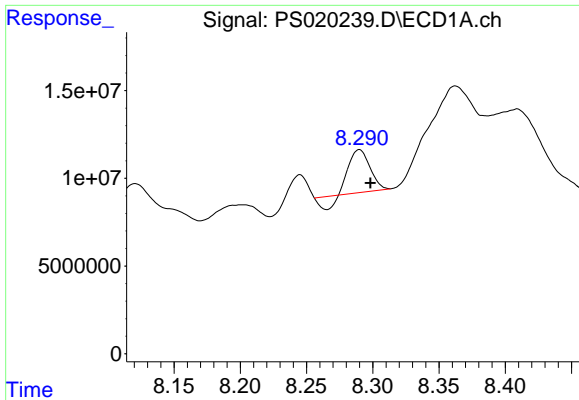
#8 DICHLORPROP

R.T.: 8.121 min
 Delta R.T.: 0.058 min
 Response: 31153939
 Conc: 10.88 ng/ml



#8 DICHLORPROP

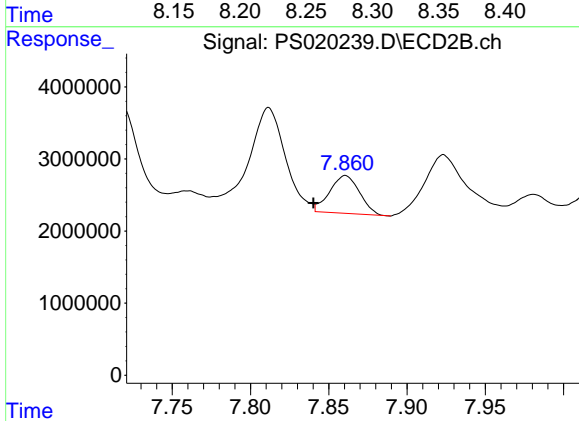
R.T.: 7.561 min
 Delta R.T.: 0.017 min
 Response: 45635981
 Conc: 48.80 ng/ml



#9 2,4-D

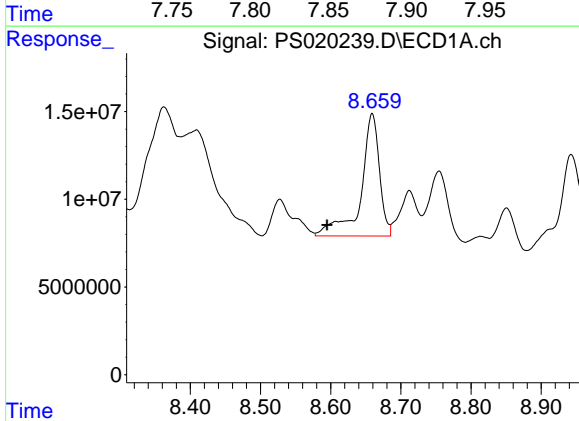
R.T.: 8.290 min
 Delta R.T.: -0.008 min
 Response: 22421919
 Conc: 7.44 ng/ml

Instrument :
 ECD_S
 ClientSampleId :



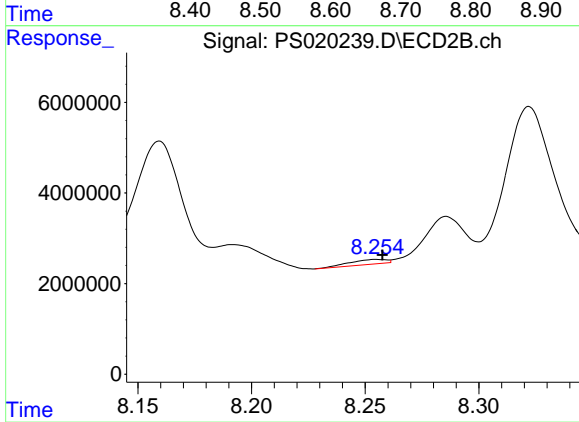
#9 2,4-D

R.T.: 7.861 min
 Delta R.T.: 0.020 min
 Response: 6929907
 Conc: 5.91 ng/ml



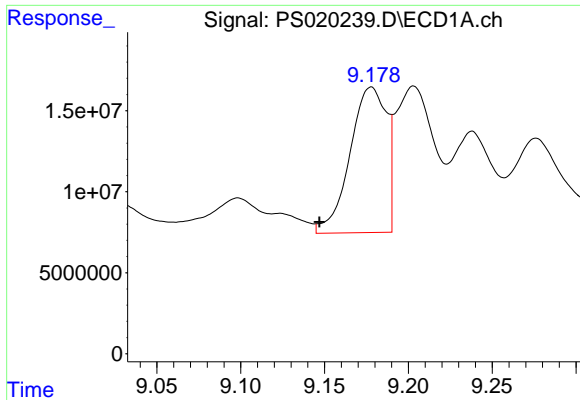
#10 Pentachlorophenol

R.T.: 8.659 min
 Delta R.T.: 0.064 min
 Response: 128265827
 Conc: 3.28 ng/ml



#10 Pentachlorophenol

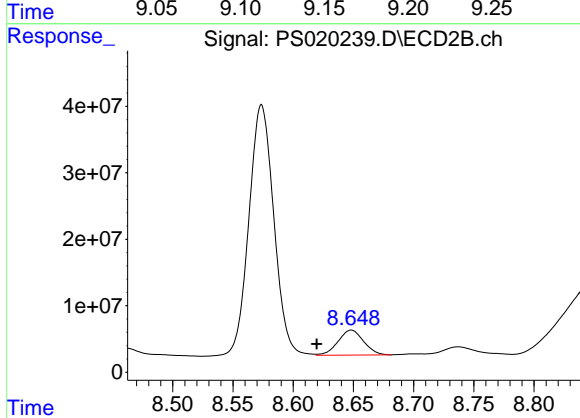
R.T.: 8.255 min
 Delta R.T.: -0.003 min
 Response: 1190042
 Conc: N.D.



#11 2,4,5-TP (SILVEX)

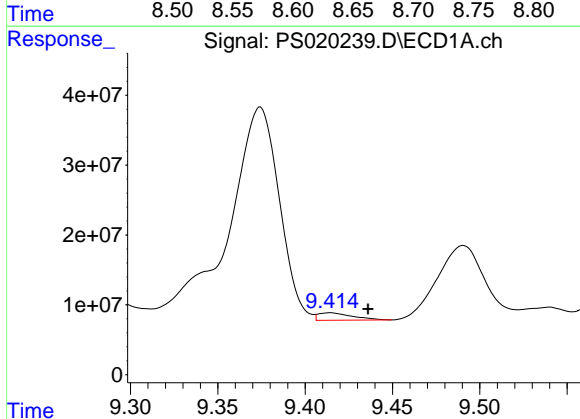
R.T.: 9.178 min
 Delta R.T.: 0.031 min
 Response: 136353286
 Conc: 8.00 ng/ml

Instrument :
 ECD_S
 ClientSampleId :



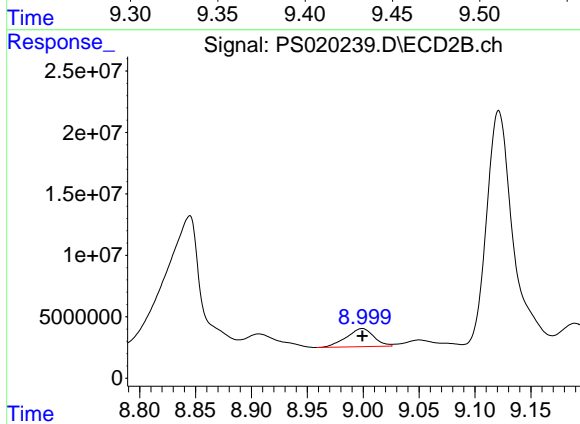
#11 2,4,5-TP (SILVEX)

R.T.: 8.648 min
 Delta R.T.: 0.029 min
 Response: 55605560
 Conc: 10.40 ng/ml



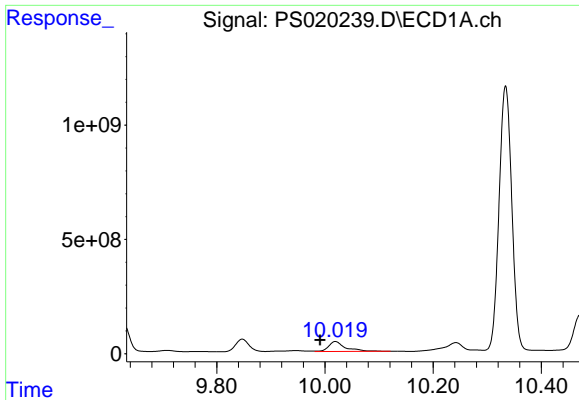
#12 2,4,5-T

R.T.: 9.414 min
 Delta R.T.: -0.022 min
 Response: 14240730
 Conc: N.D.



#12 2,4,5-T

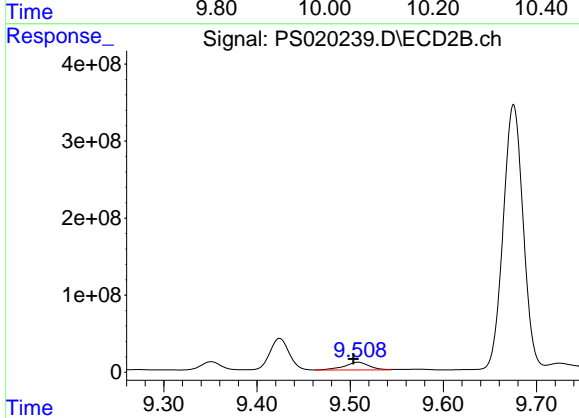
R.T.: 8.999 min
 Delta R.T.: 0.000 min
 Response: 25204682
 Conc: 4.95 ng/ml



#13 2,4-DB

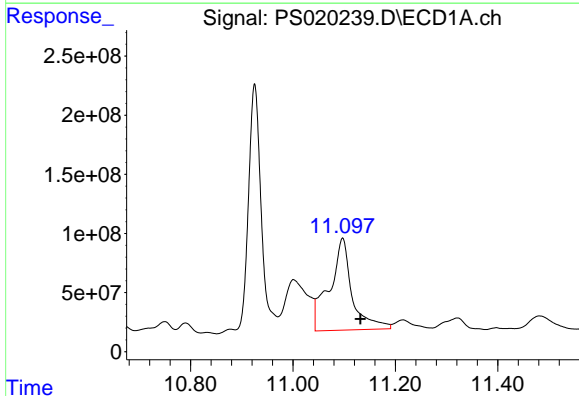
R.T.: 10.019 min
 Delta R.T.: 0.029 min
 Response: 915083102
 Conc: 250.74 ng/ml

Instrument :
 ECD_S
 ClientSampleId :



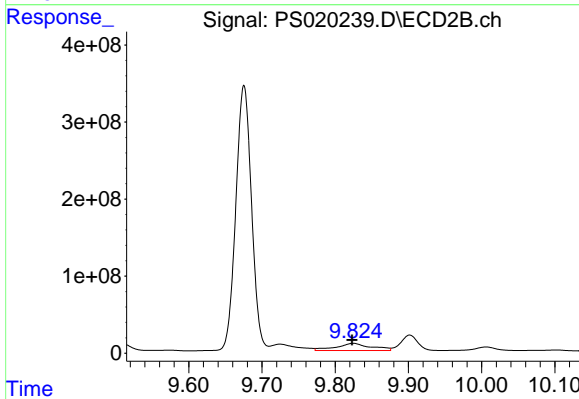
#13 2,4-DB

R.T.: 9.508 min
 Delta R.T.: 0.005 min
 Response: 187666439
 Conc: 275.92 ng/ml



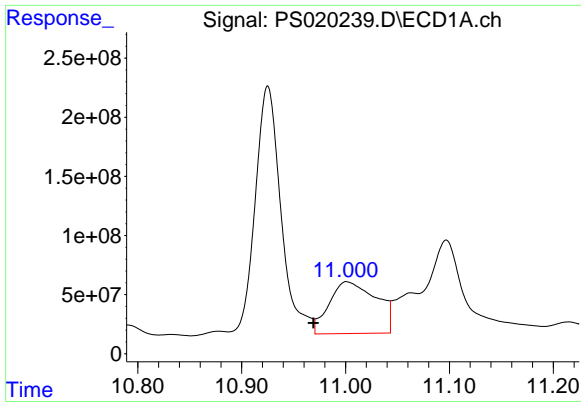
#14 DINOSEB

R.T.: 11.097 min
 Delta R.T.: -0.035 min
 Response: 2392887758
 Conc: 150.41 ng/ml



#14 DINOSEB

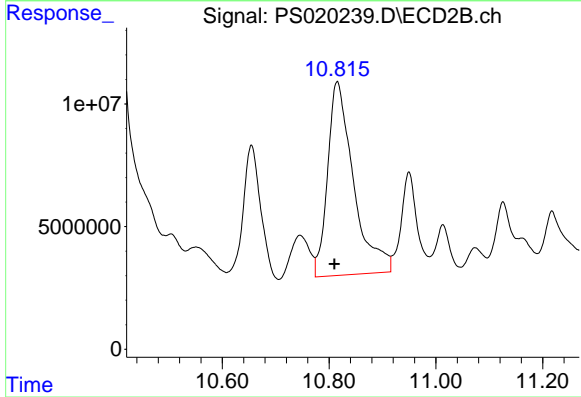
R.T.: 9.825 min
 Delta R.T.: 0.002 min
 Response: 308662699
 Conc: 81.35 ng/ml



#15 Picloram

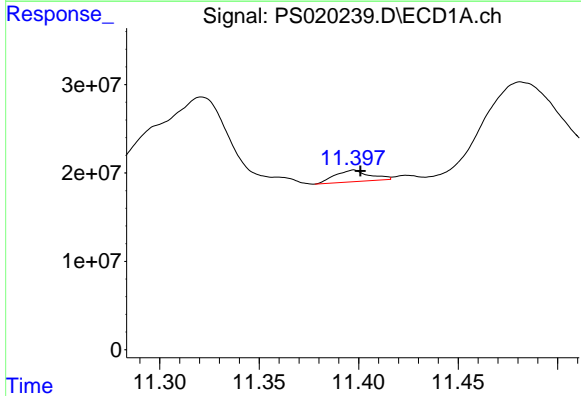
R.T.: 11.002 min
 Delta R.T.: 0.032 min
 Response: 1382110029
 Conc: 43.71 ng/ml

Instrument :
 ECD_S
 ClientSampleId :



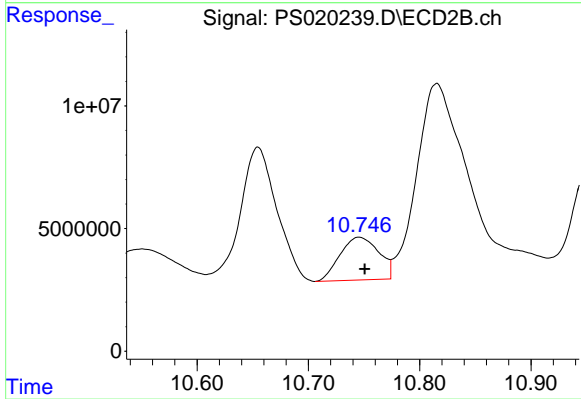
#15 Picloram

R.T.: 10.815 min
 Delta R.T.: 0.005 min
 Response: 266329261
 Conc: 35.30 ng/ml



#16 DCPA

R.T.: 11.397 min
 Delta R.T.: -0.004 min
 Response: 15790402
 Conc: N.D.



#16 DCPA

R.T.: 10.746 min
 Delta R.T.: -0.005 min
 Response: 42345447
 Conc: 6.39 ng/ml