

Data Path : Z:\pestpcbsrv\HPCHEM1\ECD\_S\Data\PS081018\  
 Data File : PS001438.D  
 Signal(s) : Signal #1: ECD1A.ch Signal #2: ECD2B.ch  
 Acq On : 10 Aug 2018 22:50  
 Operator : UA  
 Sample : J4398-01  
 Misc :  
 ALS Vial : 15 Sample Multiplier: 1

Instrument :  
 ECD\_S  
 ClientSampleId :

Integration File signal 1: autoint1.e  
 Integration File signal 2: autoint2.e  
 Quant Time: Aug 11 06:38:14 2018  
 Quant Method : Z:\pestpcbsrv\HPCHEM1\ECD\_S\Method\PS072118.M  
 Quant Title : 8080.M  
 QLast Update : Sat Jul 21 01:18:58 2018  
 Response via : Initial Calibration  
 Integrator: ChemStation

Volume Inj. : 2 µl  
 Signal #1 Phase : Rtx-CLPesticides Signal #2 Phase: Rtx-CLPesticides2  
 Signal #1 Info : 30M x 0.32mm x0.5 Signal #2 Info : 30M x 0.32mm x 0.25µm

Compound	RT#1	RT#2	Resp#1	Resp#2	ng/ml	ng/ml
-----						
System Monitoring Compounds						
4) S 2,4-DCAA	11.631	11.050	71924578	50921729	387.629	279.982 #
Target Compounds						
1) T Dalapon	2.978	2.418	4682428	2274122	19.747	9.980 #
3) T 4-Nitroph...	0.000	10.207	0	11189649	N.D.	109.768 #
5) T DICAMBA	0.000	11.295	0	7031503	N.D.	10.259 #
6) T MCPP	12.324	0.000	4145490	0	8.248	N.D. #
7) T MCPA	12.462	11.961	6514855	-1344946	8.261	N.D. #
8) T DICHLORPROP	0.000	12.512	0	7367855	N.D.	41.592 #
9) T 2,4-D	13.480	12.894	3242886	4834934	13.211	20.375 #
10) T Pentachlo...	13.880	13.413	3841902	1345654	1.365	0.489 #
11) T 2,4,5-TP ...	0.000	14.028	0	4279670	N.D.	3.914 #
12) T 2,4,5-T	0.000	14.607	0	3452884	N.D.	3.738 #
13) T 2,4-DB	15.953	15.247	2011389	4283598	13.971	32.168 #
14) T DINOSEB	0.000	15.745	0	12900996	N.D.	18.150 #
15) T Picloram	0.000	16.939	0	39046071	N.D.	28.325 #
16) T DCPA	0.000	16.939	0	39046071	N.D.	27.035 #
-----						

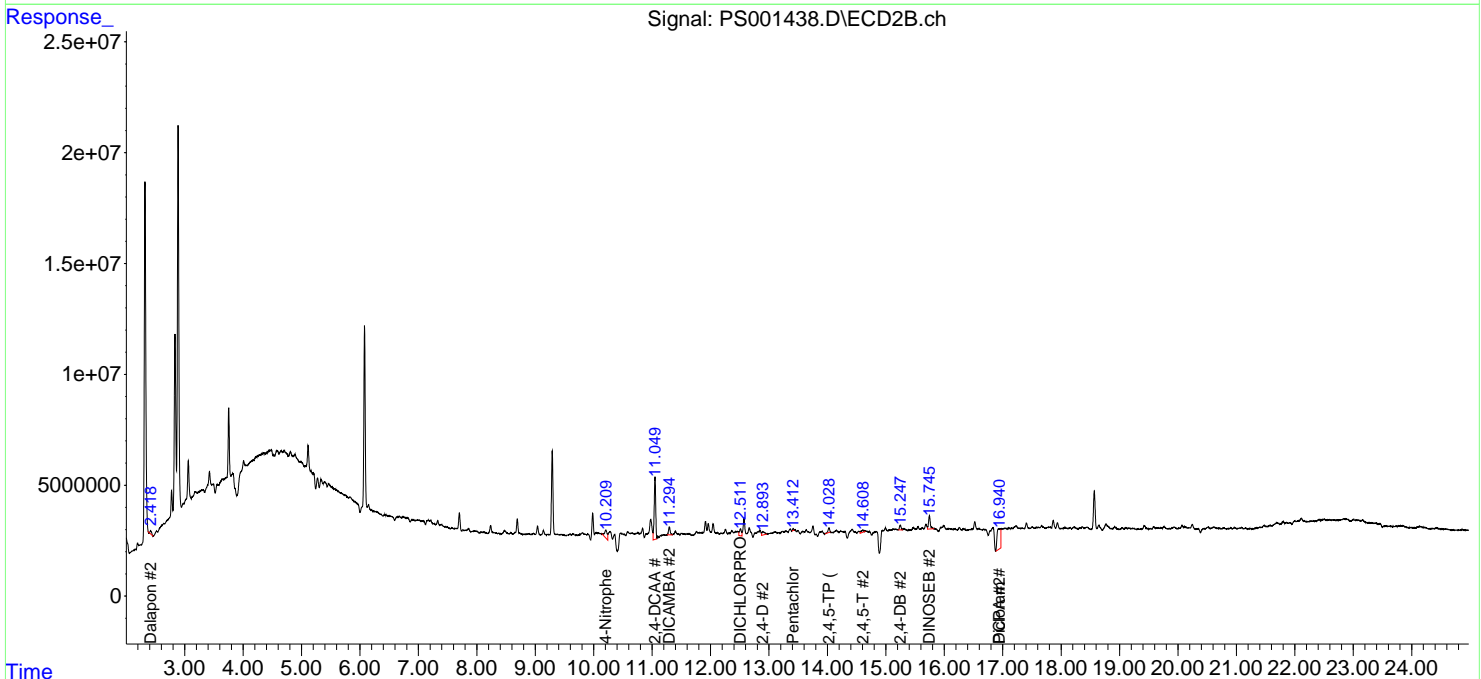
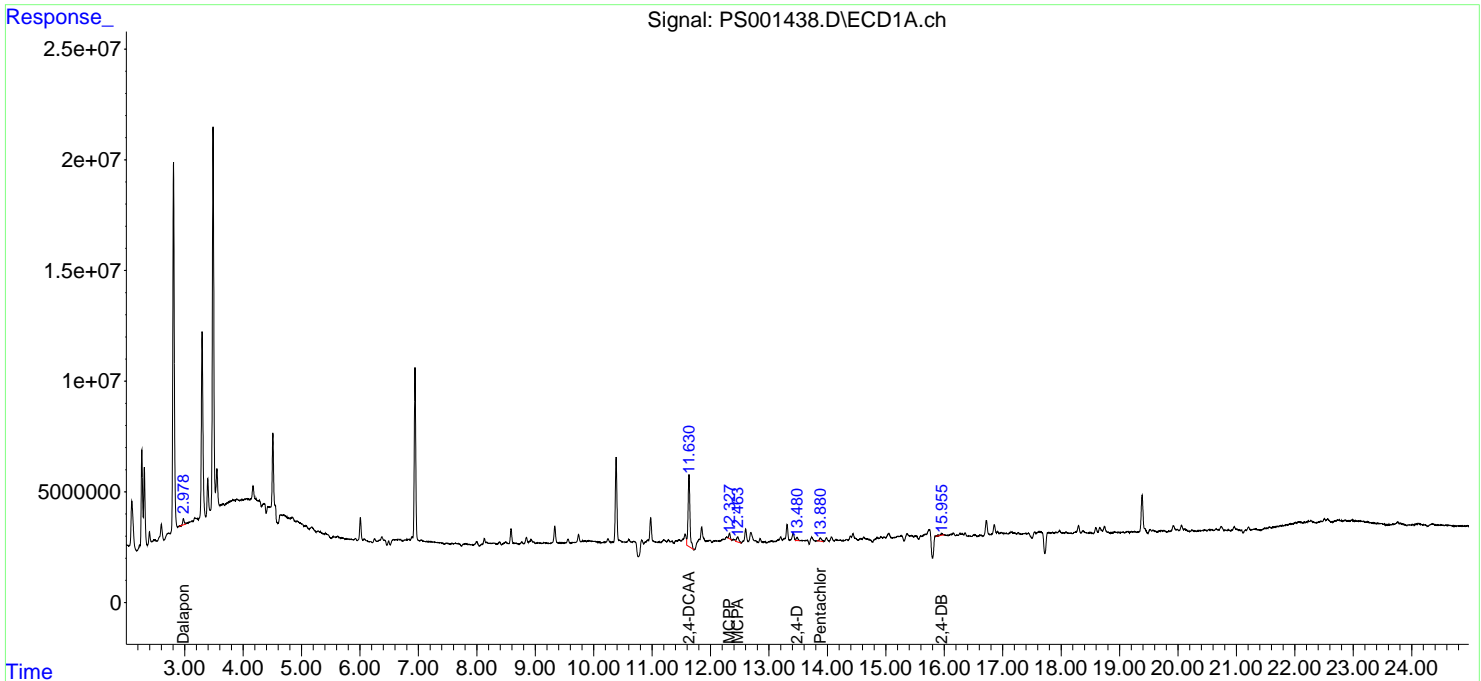
(f)=RT Delta > 1/2 Window (#)=Amounts differ by > 25% (m)=manual int.

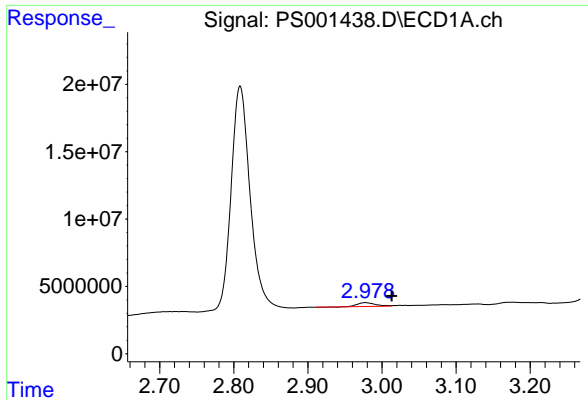
Data Path : Z:\pestpcbsrv\HPCHEM1\ECD\_S\Data\PS081018\  
 Data File : PS001438.D  
 Signal(s) : Signal #1: ECD1A.ch Signal #2: ECD2B.ch  
 Acq On : 10 Aug 2018 22:50  
 Operator : UA  
 Sample : J4398-01  
 Misc :  
 ALS Vial : 15 Sample Multiplier: 1

Instrument :  
 ECD\_S  
 ClientSampled :

Integration File signal 1: autoint1.e  
 Integration File signal 2: autoint2.e  
 Quant Time: Aug 11 06:38:14 2018  
 Quant Method : Z:\pestpcbsrv\HPCHEM1\ECD\_S\Method\PS072118.M  
 Quant Title : 8080.M  
 QLast Update : Sat Jul 21 01:18:58 2018  
 Response via : Initial Calibration  
 Integrator: ChemStation

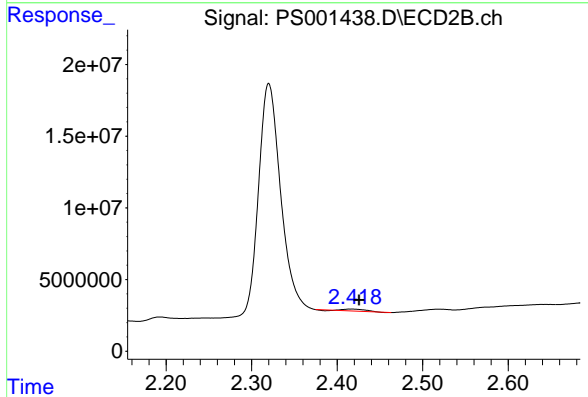
Volume Inj. : 2 µl  
 Signal #1 Phase : Rtx-CLPesticides Signal #2 Phase: Rtx-CLPesticides2  
 Signal #1 Info : 30M x 0.32mm x0.5 Signal #2 Info : 30M x 0.32mm x 0.25µm



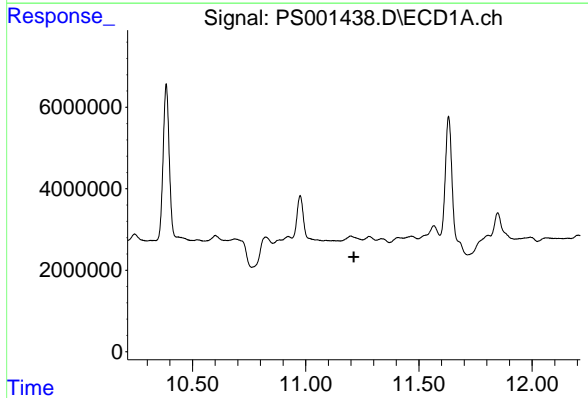


#1 Dalapon  
 R.T.: 2.978 min  
 Delta R.T.: -0.035 min  
 Response: 4682428  
 Conc: 19.75 ng/ml

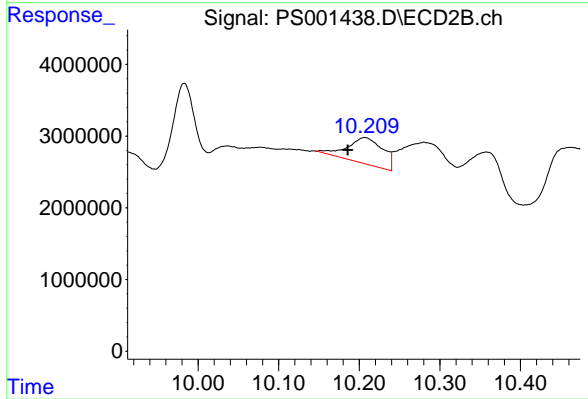
Instrument :  
 ECD\_S  
 ClientSampleId :



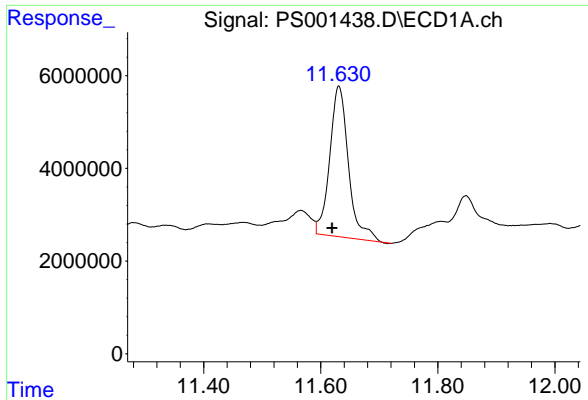
#1 Dalapon  
 R.T.: 2.418 min  
 Delta R.T.: -0.007 min  
 Response: 2274122  
 Conc: 9.98 ng/ml



#3 4-Nitrophenol  
 R.T.: 0.000 min  
 Exp R.T. : 11.213 min  
 Response: 0  
 Conc: N.D.

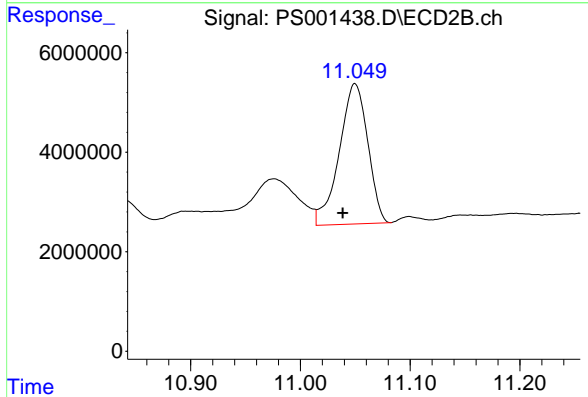


#3 4-Nitrophenol  
 R.T.: 10.207 min  
 Delta R.T.: 0.021 min  
 Response: 11189649  
 Conc: 109.77 ng/ml

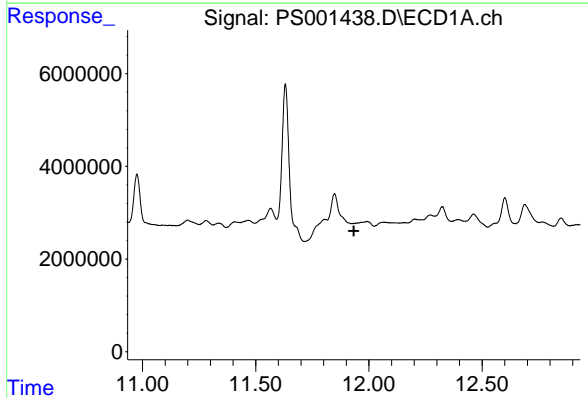


#4 2,4-DCAA  
 R.T.: 11.631 min  
 Delta R.T.: 0.012 min  
 Response: 71924578  
 Conc: 387.63 ng/ml

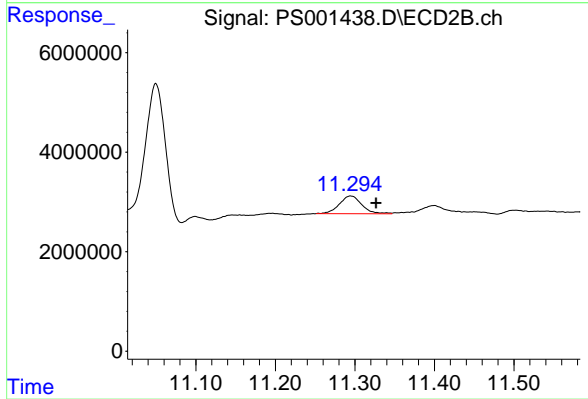
Instrument :  
 ECD\_S  
 ClientSampleId :



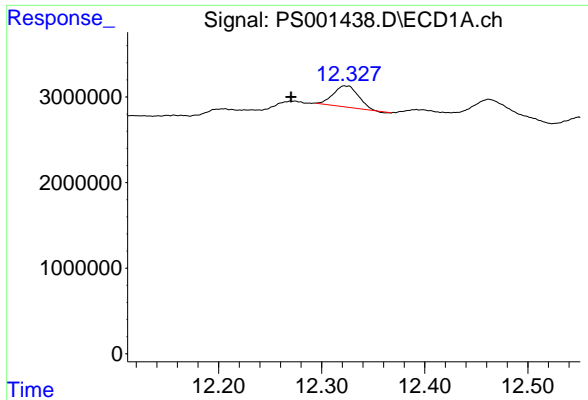
#4 2,4-DCAA  
 R.T.: 11.050 min  
 Delta R.T.: 0.011 min  
 Response: 50921729  
 Conc: 279.98 ng/ml



#5 DICAMBA  
 R.T.: 0.000 min  
 Exp R.T. : 11.934 min  
 Response: 0  
 Conc: N.D.



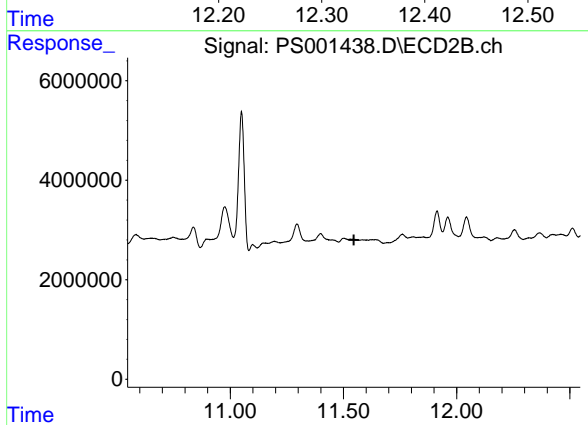
#5 DICAMBA  
 R.T.: 11.295 min  
 Delta R.T.: -0.032 min  
 Response: 7031503  
 Conc: 10.26 ng/ml



#6 MCPP

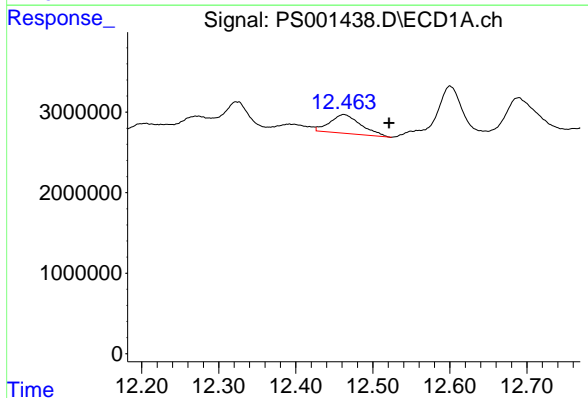
R.T.: 12.324 min  
 Delta R.T.: 0.053 min  
 Response: 4145490  
 Conc: 8.25 ug/ml

Instrument :  
 ECD\_S  
 ClientSampleId :



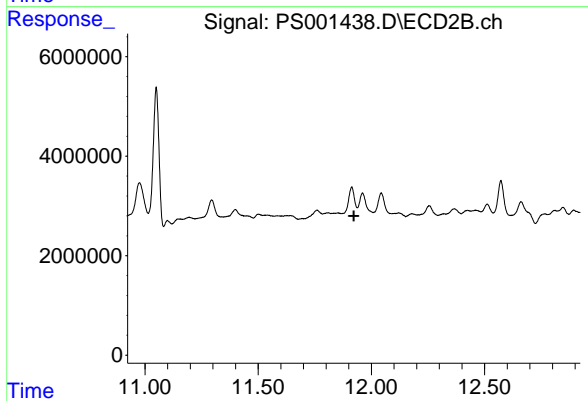
#6 MCPP

R.T.: 0.000 min  
 Exp R.T. : 11.546 min  
 Response: 0  
 Conc: N.D.



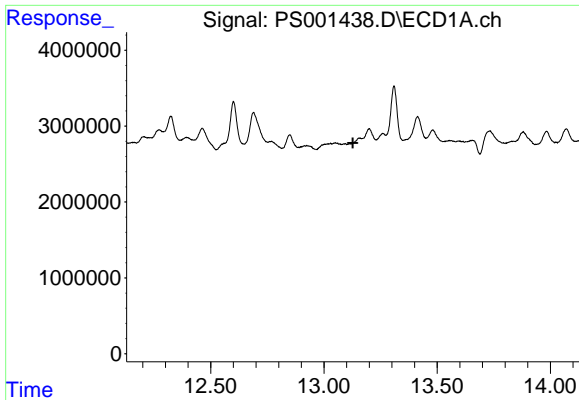
#7 MCPA

R.T.: 12.462 min  
 Delta R.T.: -0.059 min  
 Response: 6514855  
 Conc: 8.26 ug/ml



#7 MCPA

R.T.: 11.961 min  
 Delta R.T.: 0.038 min  
 Response: -1344946  
 Conc: N.D.

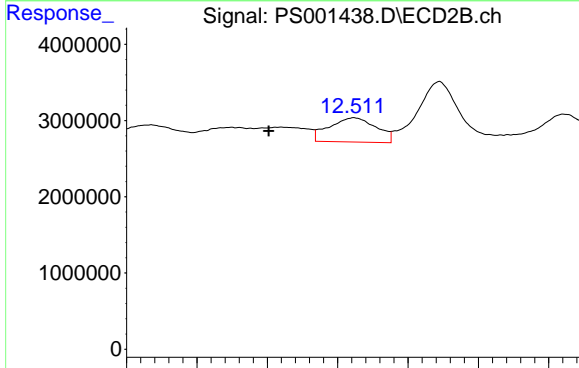


#8 DICHLORPROP

R.T.: 0.000 min  
 Exp R.T.: 13.128 min  
 Response: 0  
 Conc: N.D.

Instrument :  
 ECD\_S  
 ClientSampled :

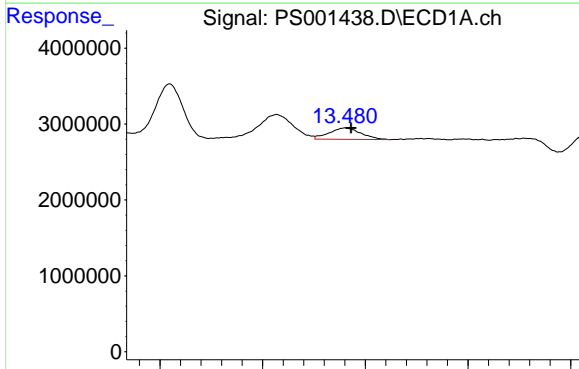
Time 12.50 13.00 13.50 14.00



#8 DICHLORPROP

R.T.: 12.512 min  
 Delta R.T.: 0.060 min  
 Response: 7367855  
 Conc: 41.59 ng/ml

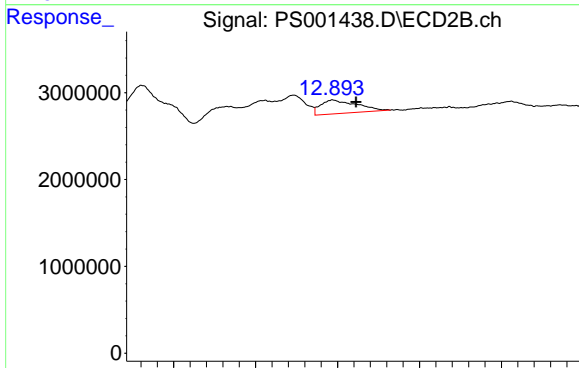
Time 12.35 12.45 12.50 12.55 12.60 12.65



#9 2,4-D

R.T.: 13.480 min  
 Delta R.T.: -0.006 min  
 Response: 3242886  
 Conc: 13.21 ng/ml

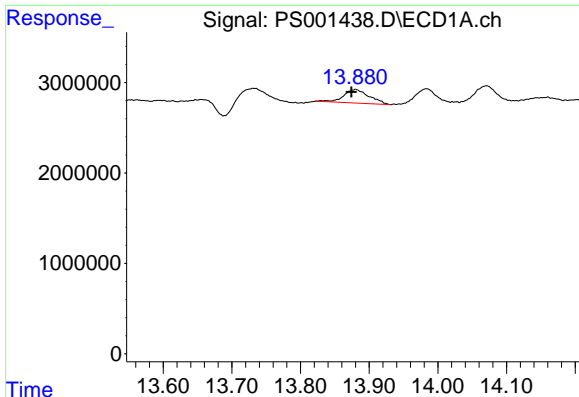
Time 13.30 13.40 13.50 13.60



#9 2,4-D

R.T.: 12.894 min  
 Delta R.T.: -0.029 min  
 Response: 4834934  
 Conc: 20.38 ng/ml

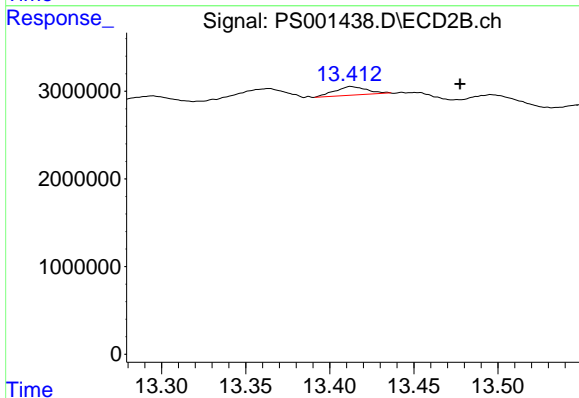
Time 12.70 12.80 12.90 13.00 13.10



#10 Pentachlorophenol

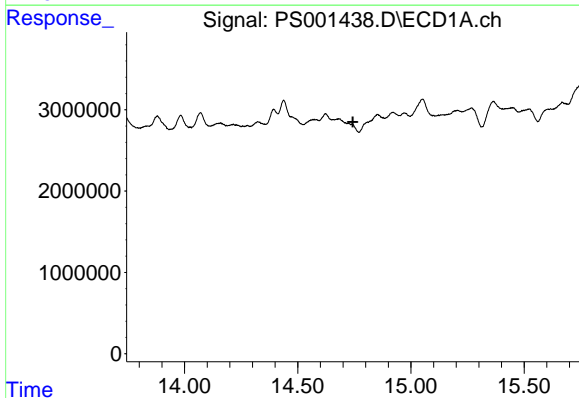
R.T.: 13.880 min  
 Delta R.T.: 0.006 min  
 Response: 3841902  
 Conc: 1.36 ng/ml

Instrument :  
 ECD\_S  
 ClientSampleId :



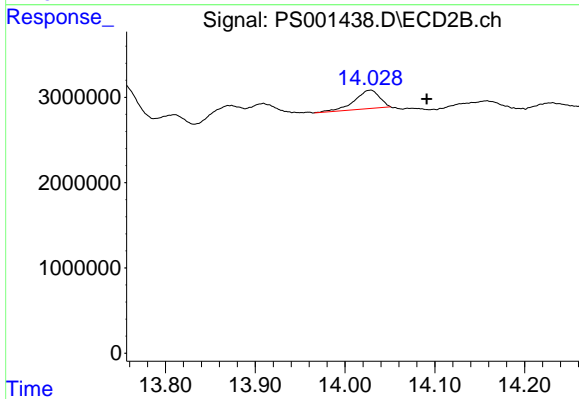
#10 Pentachlorophenol

R.T.: 13.413 min  
 Delta R.T.: -0.064 min  
 Response: 1345654  
 Conc: 0.49 ng/ml



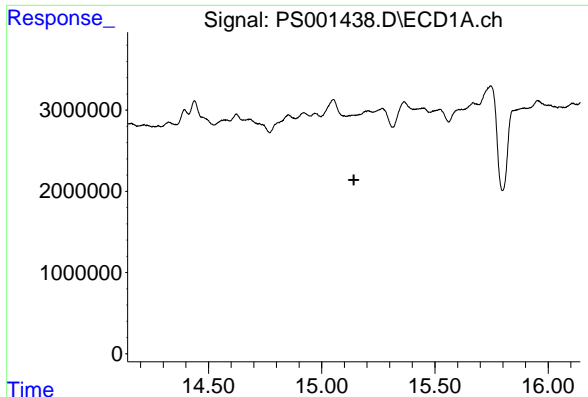
#11 2,4,5-TP (SILVEX)

R.T.: 0.000 min  
 Exp R.T. : 14.743 min  
 Response: 0  
 Conc: N.D.



#11 2,4,5-TP (SILVEX)

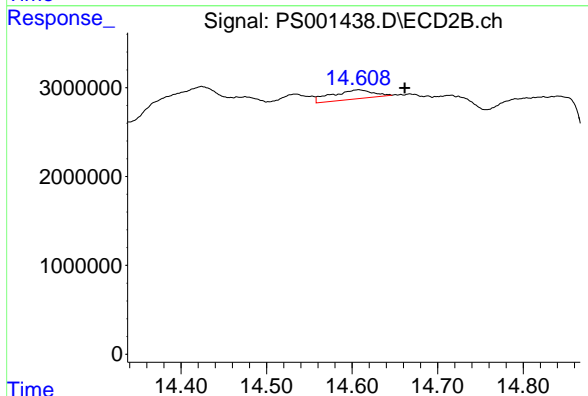
R.T.: 14.028 min  
 Delta R.T.: -0.063 min  
 Response: 4279670  
 Conc: 3.91 ng/ml



#12 2,4,5-T

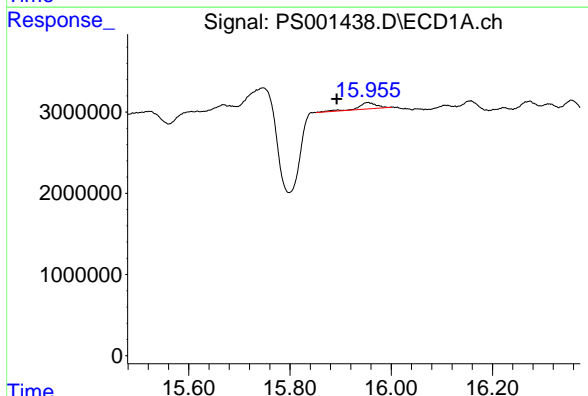
R.T.: 0.000 min  
 Exp R.T.: 15.142 min  
 Response: 0  
 Conc: N.D.

Instrument :  
 ECD\_S  
 ClientSampleId :



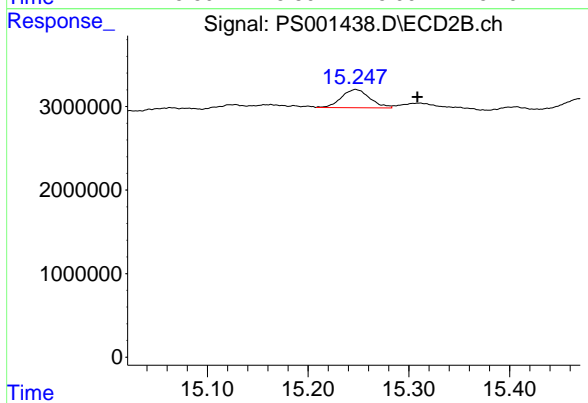
#12 2,4,5-T

R.T.: 14.607 min  
 Delta R.T.: -0.054 min  
 Response: 3452884  
 Conc: 3.74 ng/ml



#13 2,4-DB

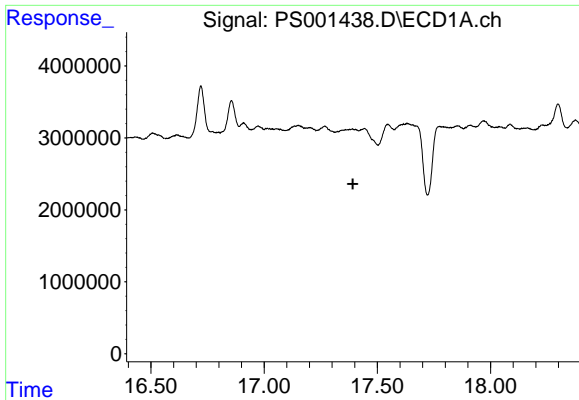
R.T.: 15.953 min  
 Delta R.T.: 0.061 min  
 Response: 2011389  
 Conc: 13.97 ng/ml



#13 2,4-DB

R.T.: 15.247 min  
 Delta R.T.: -0.061 min  
 Response: 4283598  
 Conc: 32.17 ng/ml

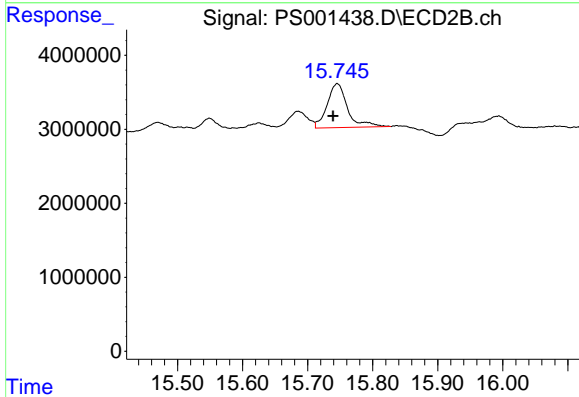




#14 DINOSEB

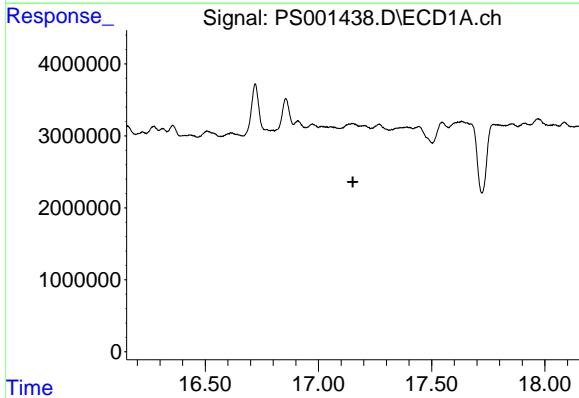
R.T.: 0.000 min  
 Exp R.T. : 17.392 min  
 Response: 0  
 Conc: N.D.

Instrument :  
 ECD\_S  
 ClientSampleId :



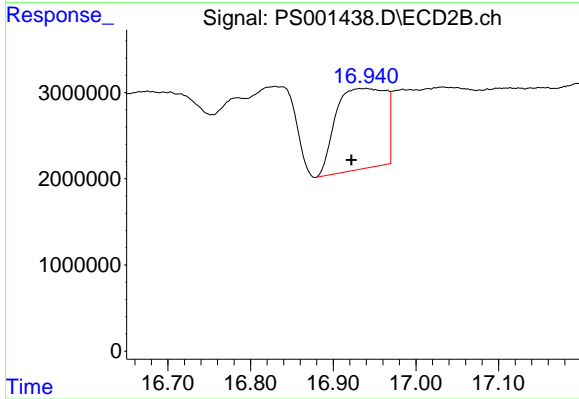
#14 DINOSEB

R.T.: 15.745 min  
 Delta R.T.: 0.006 min  
 Response: 12900996  
 Conc: 18.15 ng/ml



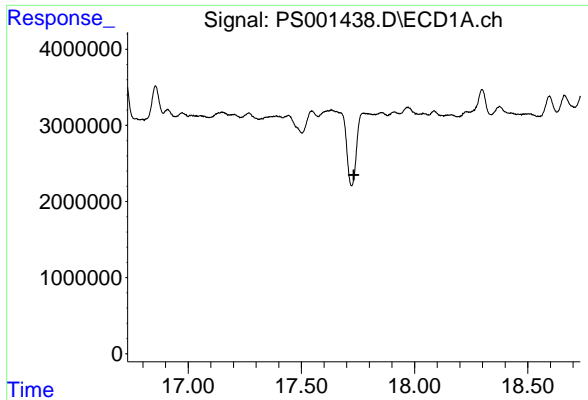
#15 Picloram

R.T.: 0.000 min  
 Exp R.T. : 17.152 min  
 Response: 0  
 Conc: N.D.



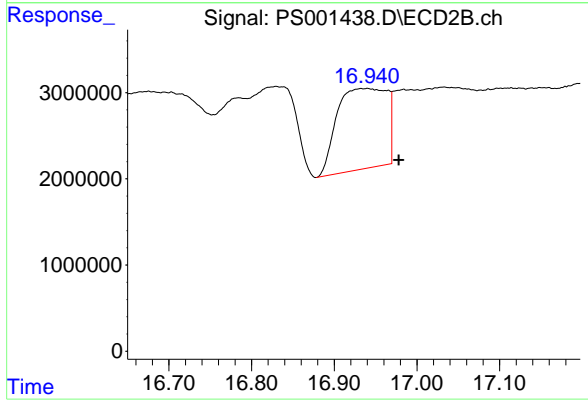
#15 Picloram

R.T.: 16.939 min  
 Delta R.T.: 0.017 min  
 Response: 39046071  
 Conc: 28.32 ng/ml



#16 DCPA  
R.T.: 0.000 min  
Exp R.T.: 17.732 min  
Response: 0  
Conc: N.D.

Instrument :  
ECD\_S  
ClientSampled :



#16 DCPA  
R.T.: 16.939 min  
Delta R.T.: -0.039 min  
Response: 39046071  
Conc: 27.03 ng/ml