

Data Path : Z:\pestpcbsrv\HPCHEM1\ECD_S\Data\PS081221\
 Data File : PS016389.D
 Signal(s) : Signal #1: ECD1A.ch Signal #2: ECD2B.ch
 Acq On : 12 Aug 2021 20:11
 Operator : DD\AJ
 Sample : HSTDCCC750
 Misc :
 ALS Vial : 3 Sample Multiplier: 1

Instrument :
 ECD_S
 ClientSampleId :

Integration File signal 1: autoint1.e
 Integration File signal 2: autoint2.e
 Quant Time: Aug 13 02:27:42 2021
 Quant Method : Z:\pestpcbsrv\HPCHEM1\ECD_S\Method\PS080221.M
 Quant Title : 8080.M
 QLast Update : Mon Aug 02 14:10:19 2021
 Response via : Initial Calibration
 Integrator: ChemStation

Volume Inj. : 2 µl
 Signal #1 Phase : Rtx-CLPesticides Signal #2 Phase: Rtx-CLPesticides2
 Signal #1 Info : 30M x 0.32mm x0.5 Signal #2 Info : 30M x 0.32mm x 0.25µm

	Compound	RT#1	RT#2	Resp#1	Resp#2	ng/ml	ng/ml

System Monitoring Compounds							
4) S	2,4-DCAA	7.184	6.765	1193.3E6	426.4E6	811.183	817.542
Target Compounds							
1) T	Dalapon	3.015	2.517	1460.5E6	495.0E6	723.929	710.586
2) T	3,5-DICHL...	6.403	5.957	1576.4E6	605.0E6	748.768	766.120
3) T	4-Nitroph...	7.013	6.387	590.9E6	236.7E6	739.390	770.263
5) T	DICAMBA	7.375	6.928	4310.9E6	1686.6E6	769.519	773.968
6) T	MCP P	7.544	7.026	325.5E6	135.5E6	76.922	78.406
7) T	MCPA	7.693	7.237	473.2E6	204.4E6	76.809	74.968
8) T	DICHLORPROP	8.067	7.548	1021.4E6	420.6E6	758.942	776.314
9) T	2,4-D	8.296	7.839	1158.9E6	492.4E6	766.378	777.219
10) T	Pentachlo...	8.604	8.265	14935.1E6	5756.0E6	760.862	776.980
11) T	2,4,5-TP ...	9.154	8.626	5518.1E6	2302.5E6	763.140	789.100
12) T	2,4,5-T	9.438	9.003	5841.1E6	2305.0E6	766.257	795.759
13) T	2,4-DB	9.989	9.508	1149.2E6	299.4E6	790.680	791.539
14) T	DINOSEB	11.145	9.835	4075.9E6	1671.5E6	772.937	820.465
15) T	Picloram	10.965	10.813	7568.5E6	3160.2E6	758.303	784.816
16) T	DCPA	11.412	10.765	8004.0E6	3559.8E6	757.228	791.923

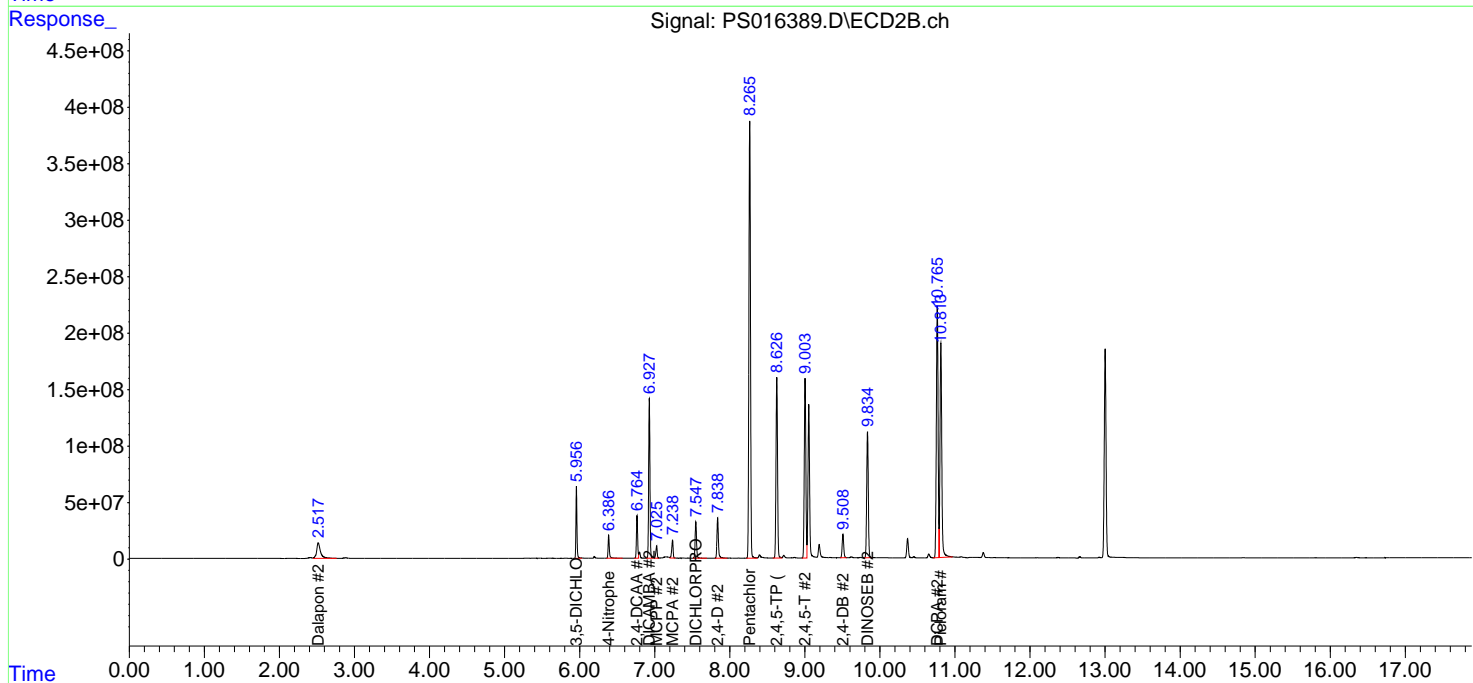
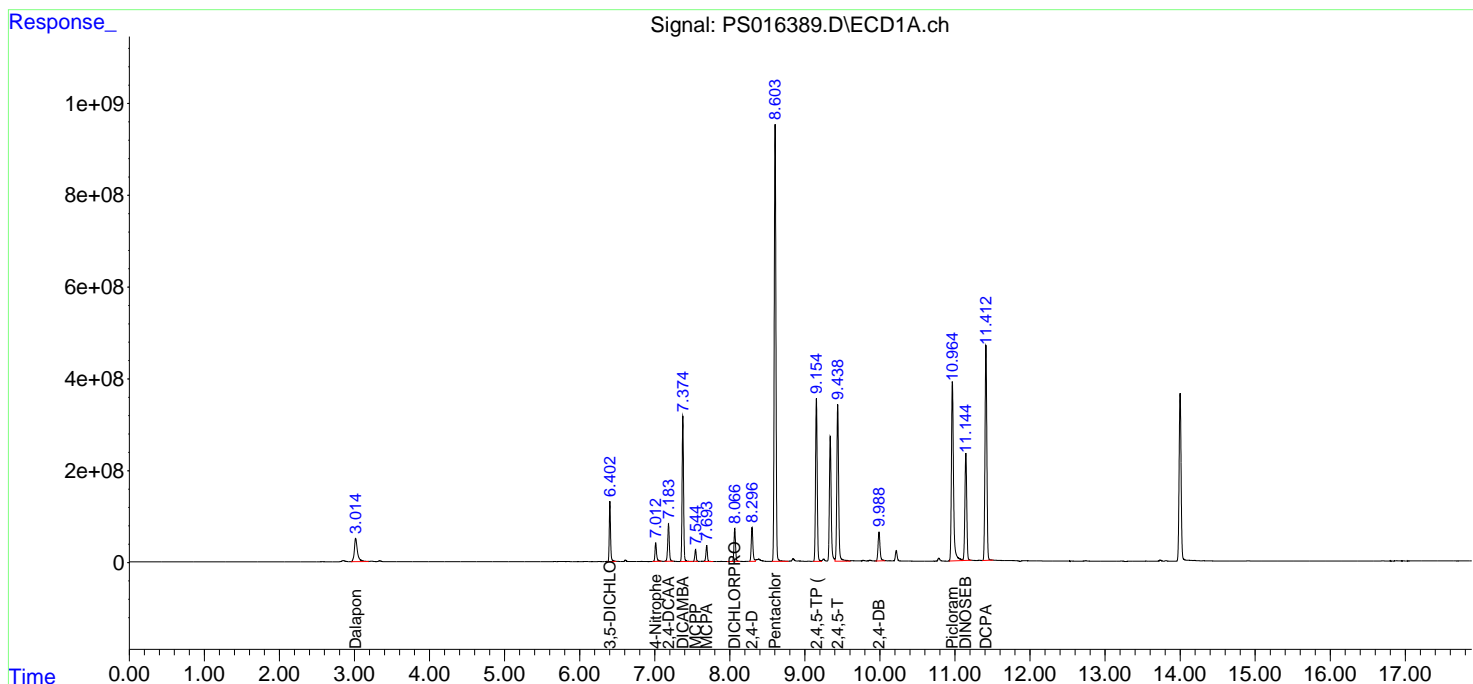
(f)=RT Delta > 1/2 Window (#)=Amounts differ by > 25% (m)=manual int.

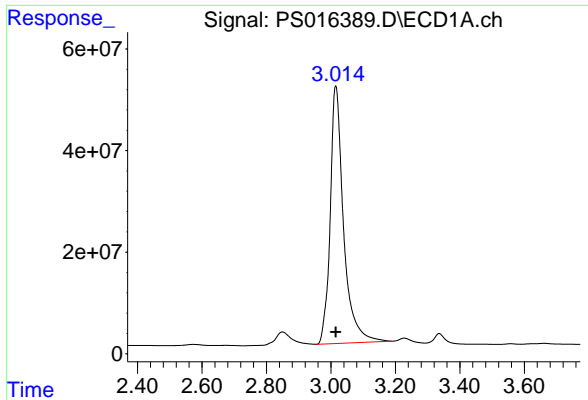
Data Path : Z:\pestpcbsrv\HPCHEM1\ECD_S\Data\PS081221\
 Data File : PS016389.D
 Signal(s) : Signal #1: ECD1A.ch Signal #2: ECD2B.ch
 Acq On : 12 Aug 2021 20:11
 Operator : DD\AJ
 Sample : HSTDCCC750
 Misc :
 ALS Vial : 3 Sample Multiplier: 1

Instrument :
 ECD_S
 ClientSampled :

Integration File signal 1: autoint1.e
 Integration File signal 2: autoint2.e
 Quant Time: Aug 13 02:27:42 2021
 Quant Method : Z:\pestpcbsrv\HPCHEM1\ECD_S\Method\PS080221.M
 Quant Title : 8080.M
 QLast Update : Mon Aug 02 14:10:19 2021
 Response via : Initial Calibration
 Integrator: ChemStation

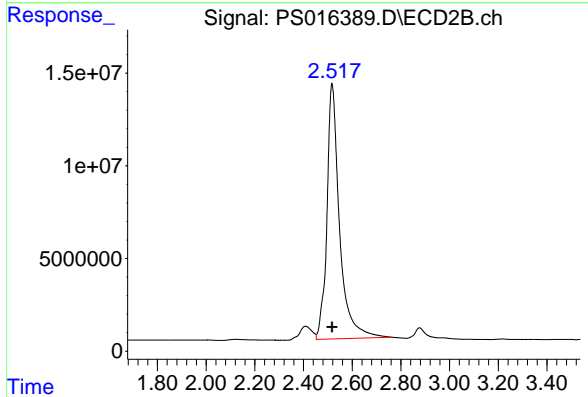
Volume Inj. : 2 µl
 Signal #1 Phase : Rtx-CLPesticides Signal #2 Phase: Rtx-CLPesticides2
 Signal #1 Info : 30M x 0.32mm x0.5 Signal #2 Info : 30M x 0.32mm x 0.25µm



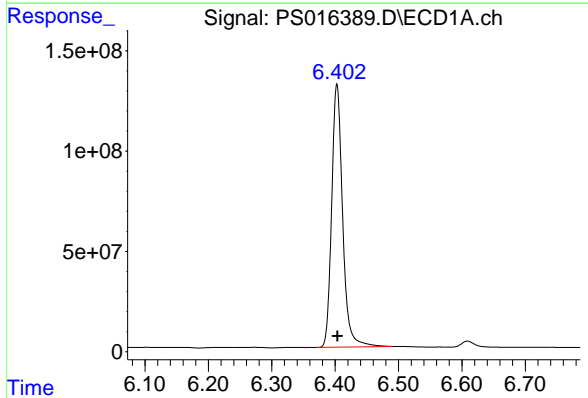


#1 Dalapon
R.T.: 3.015 min
Delta R.T.: 0.000 min
Response: 1460544374
Conc: 723.93 ng/ml

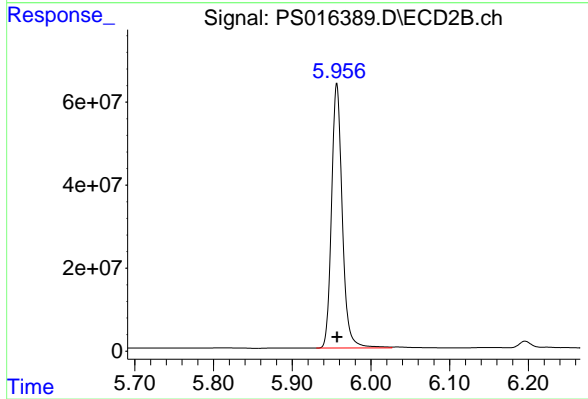
Instrument :
ECD_S
ClientSampleId :



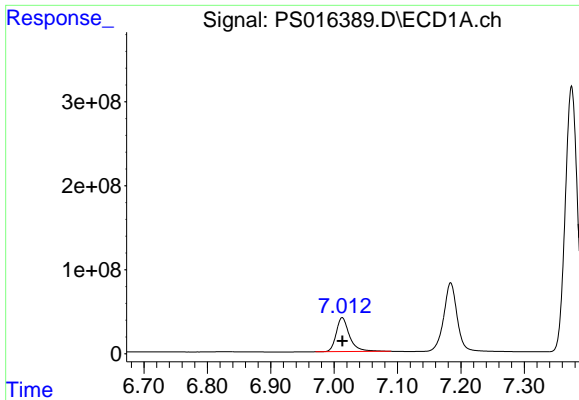
#1 Dalapon
R.T.: 2.517 min
Delta R.T.: 0.000 min
Response: 495024277
Conc: 710.59 ng/ml



#2 3,5-DICHLOROBENZOIC ACID
R.T.: 6.403 min
Delta R.T.: 0.000 min
Response: 1576351360
Conc: 748.77 ng/ml

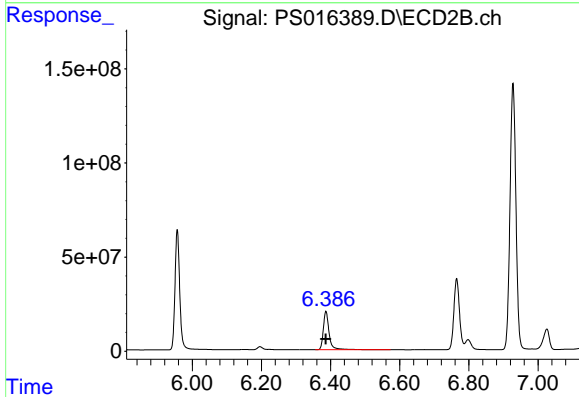


#2 3,5-DICHLOROBENZOIC ACID
R.T.: 5.957 min
Delta R.T.: 0.000 min
Response: 604970329
Conc: 766.12 ng/ml

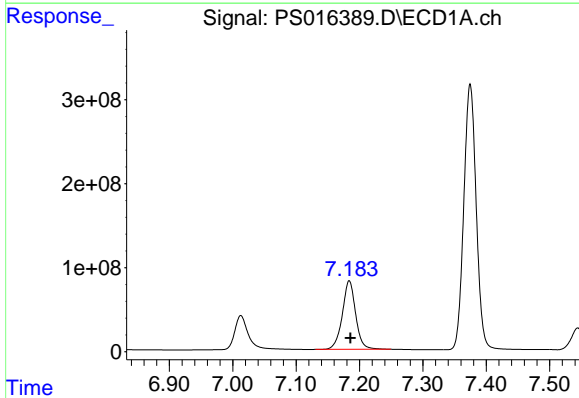


#3 4-Nitrophenol
 R.T.: 7.013 min
 Delta R.T.: 0.000 min
 Response: 590897435
 Conc: 739.39 ng/ml

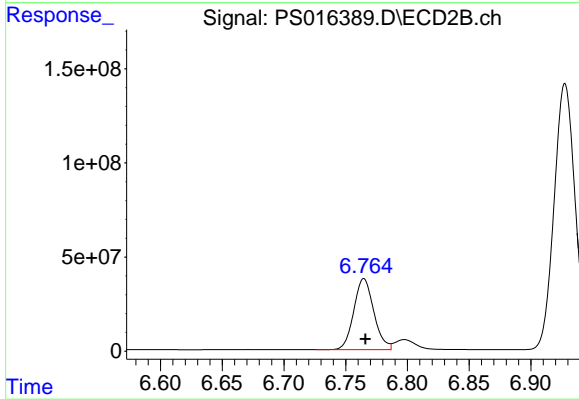
Instrument :
 ECD_S
 ClientSampled :



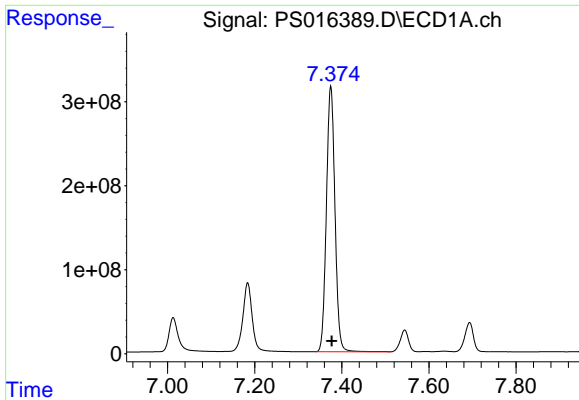
#3 4-Nitrophenol
 R.T.: 6.387 min
 Delta R.T.: 0.000 min
 Response: 236692271
 Conc: 770.26 ng/ml



#4 2,4-DCAA
 R.T.: 7.184 min
 Delta R.T.: -0.002 min
 Response: 1193337108
 Conc: 811.18 ng/ml



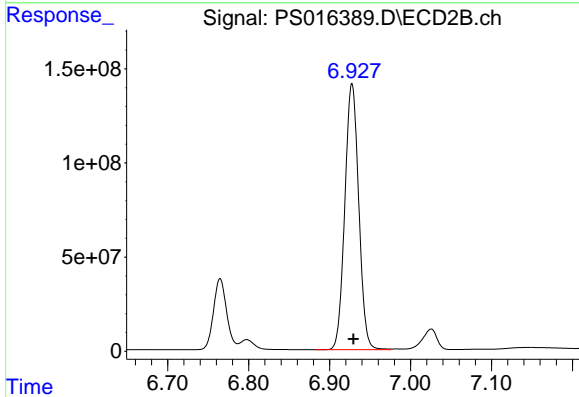
#4 2,4-DCAA
 R.T.: 6.765 min
 Delta R.T.: -0.001 min
 Response: 426449917
 Conc: 817.54 ng/ml



#5 DICAMBA

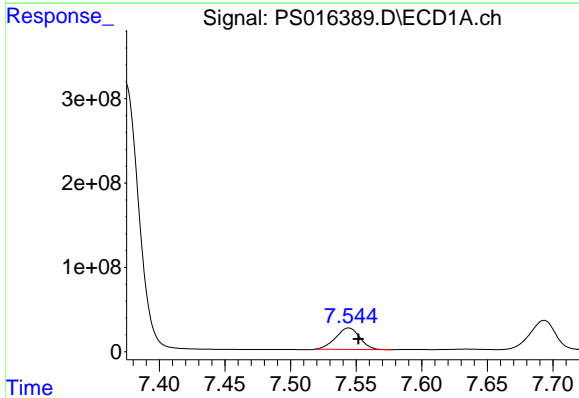
R.T.: 7.375 min
 Delta R.T.: -0.002 min
 Response: 4310886724
 Conc: 769.52 ng/ml

Instrument :
 ECD_S
 ClientSampled :



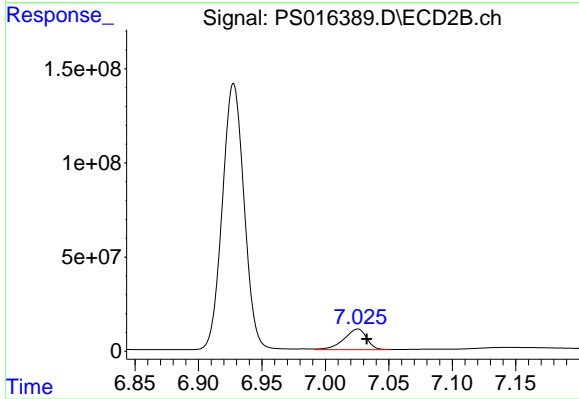
#5 DICAMBA

R.T.: 6.928 min
 Delta R.T.: -0.002 min
 Response: 1686595233
 Conc: 773.97 ng/ml



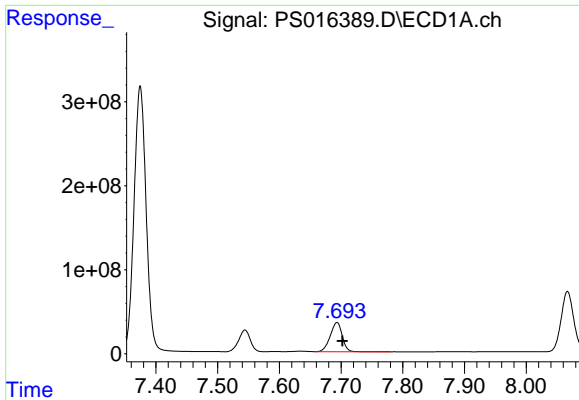
#6 MCPP

R.T.: 7.544 min
 Delta R.T.: -0.007 min
 Response: 325515952
 Conc: 76.92 ug/ml



#6 MCPP

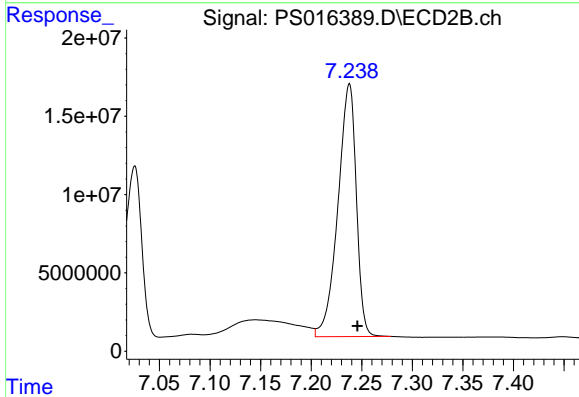
R.T.: 7.026 min
 Delta R.T.: -0.007 min
 Response: 135458179
 Conc: 78.41 ug/ml



#7 MCPA

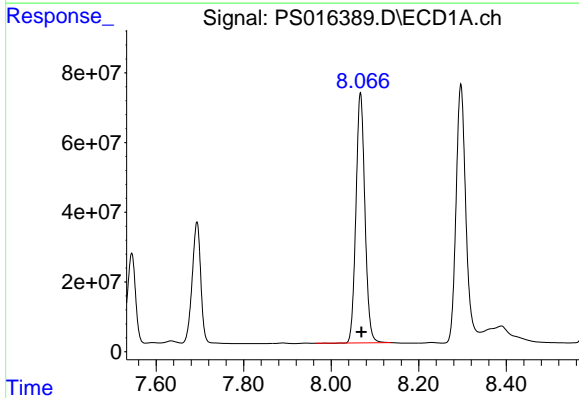
R.T.: 7.693 min
 Delta R.T.: -0.009 min
 Response: 473171074
 Conc: 76.81 ug/ml

Instrument :
 ECD_S
 ClientSampleId :



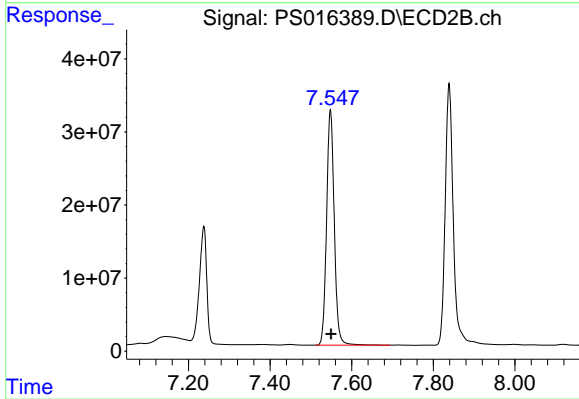
#7 MCPA

R.T.: 7.237 min
 Delta R.T.: -0.008 min
 Response: 204357381
 Conc: 74.97 ug/ml



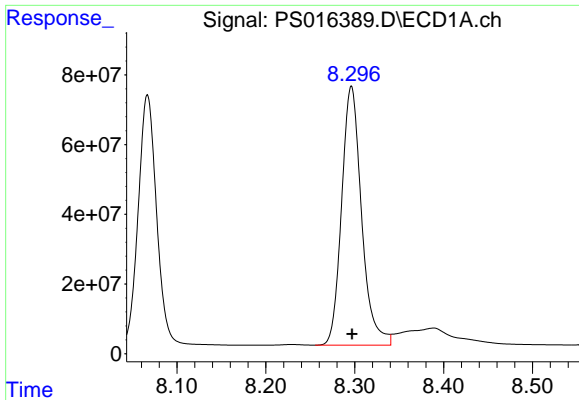
#8 DICHLORPROP

R.T.: 8.067 min
 Delta R.T.: -0.002 min
 Response: 1021354968
 Conc: 758.94 ng/ml



#8 DICHLORPROP

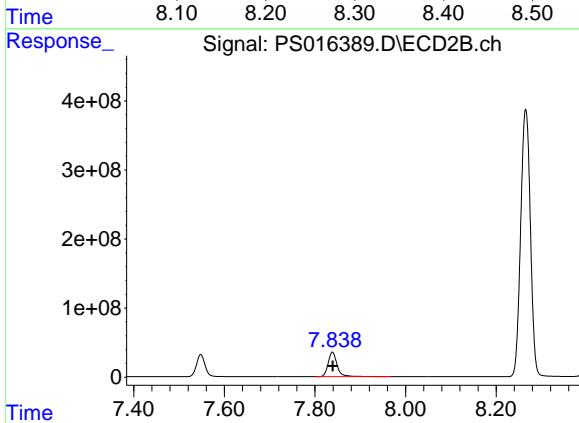
R.T.: 7.548 min
 Delta R.T.: -0.002 min
 Response: 420575070
 Conc: 776.31 ng/ml



#9 2,4-D

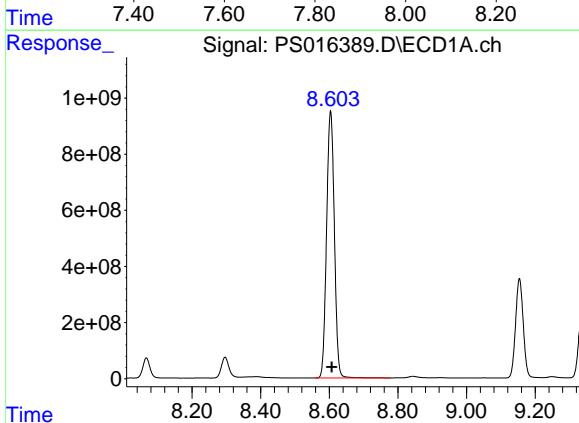
R.T.: 8.296 min
Delta R.T.: 0.000 min
Response: 1158907414
Conc: 766.38 ng/ml

Instrument :
ECD_S
ClientSampled :



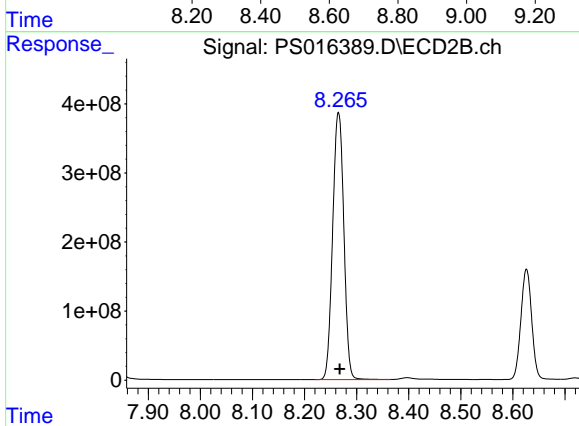
#9 2,4-D

R.T.: 7.839 min
Delta R.T.: 0.000 min
Response: 492425886
Conc: 777.22 ng/ml



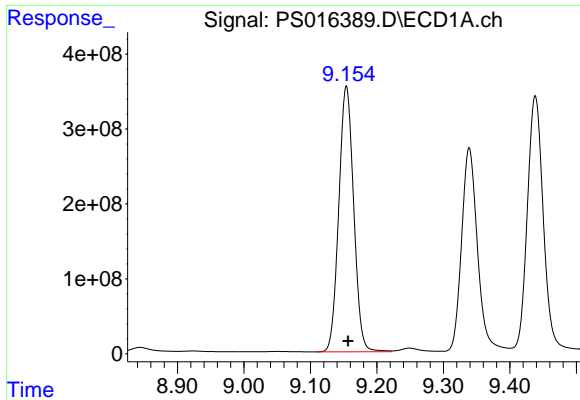
#10 Pentachlorophenol

R.T.: 8.604 min
Delta R.T.: -0.003 min
Response: 14935094879
Conc: 760.86 ng/ml



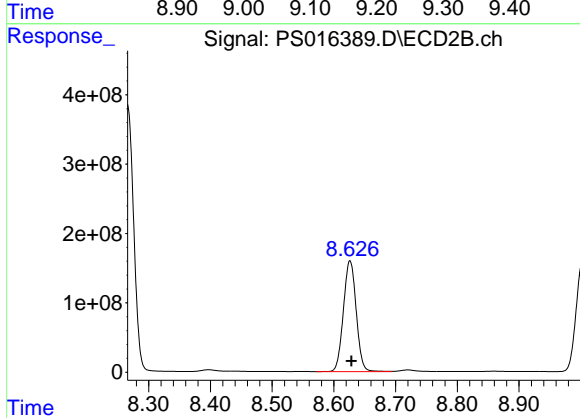
#10 Pentachlorophenol

R.T.: 8.265 min
Delta R.T.: -0.002 min
Response: 5756001302
Conc: 776.98 ng/ml

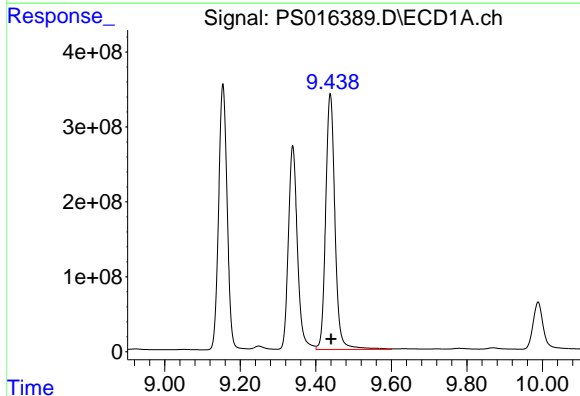


#11 2,4,5-TP (SILVEX)
 R.T.: 9.154 min
 Delta R.T.: -0.003 min
 Response: 5518116148
 Conc: 763.14 ng/ml

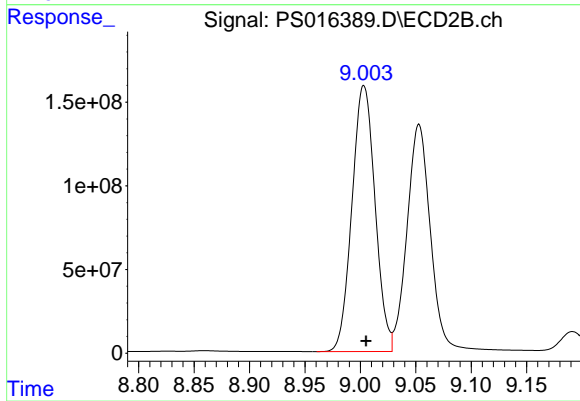
Instrument :
 ECD_S
 ClientSampleId :



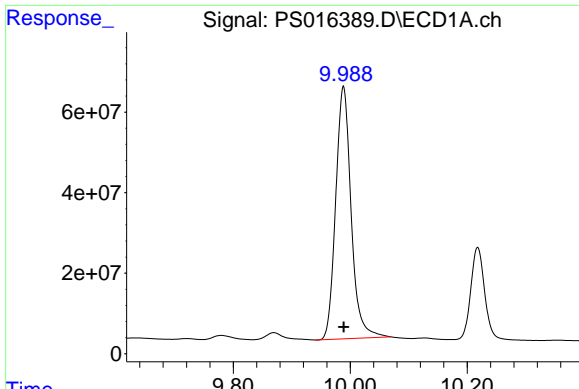
#11 2,4,5-TP (SILVEX)
 R.T.: 8.626 min
 Delta R.T.: -0.002 min
 Response: 2302471130
 Conc: 789.10 ng/ml



#12 2,4,5-T
 R.T.: 9.438 min
 Delta R.T.: -0.002 min
 Response: 5841126599
 Conc: 766.26 ng/ml



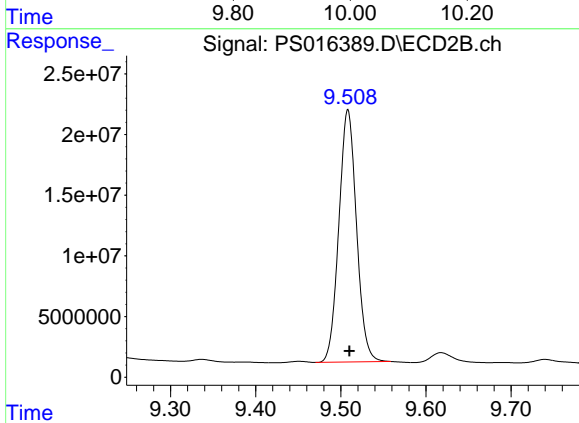
#12 2,4,5-T
 R.T.: 9.003 min
 Delta R.T.: -0.002 min
 Response: 2305015055
 Conc: 795.76 ng/ml



#13 2,4-DB

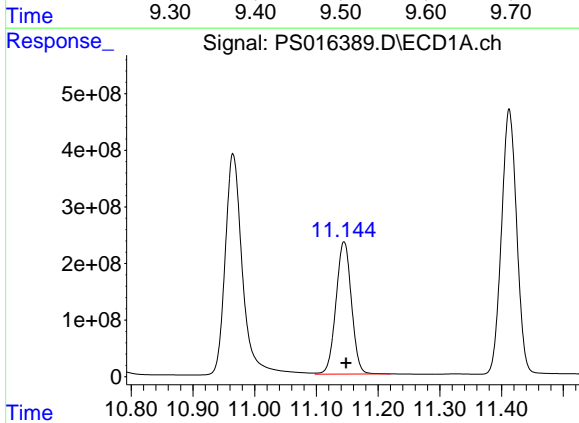
R.T.: 9.989 min
 Delta R.T.: 0.000 min
 Response: 1149202050
 Conc: 790.68 ng/ml

Instrument :
 ECD_S
 ClientSampled :



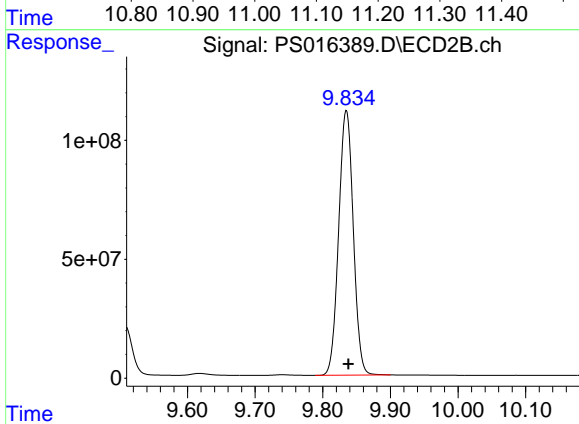
#13 2,4-DB

R.T.: 9.508 min
 Delta R.T.: -0.002 min
 Response: 299440469
 Conc: 791.54 ng/ml



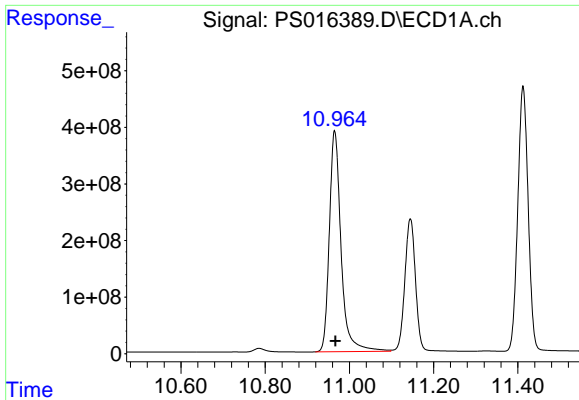
#14 DINOSEB

R.T.: 11.145 min
 Delta R.T.: -0.003 min
 Response: 4075888793
 Conc: 772.94 ng/ml



#14 DINOSEB

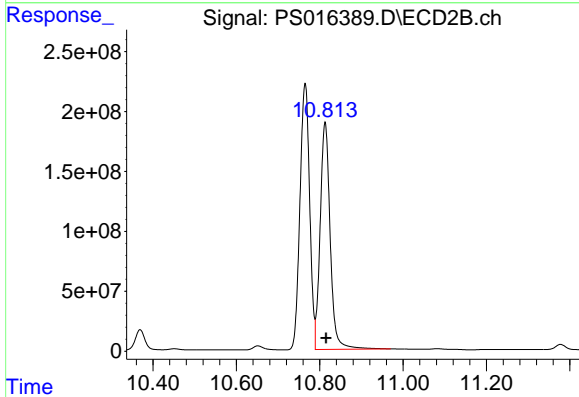
R.T.: 9.835 min
 Delta R.T.: -0.003 min
 Response: 1671547991
 Conc: 820.47 ng/ml



#15 Picloram

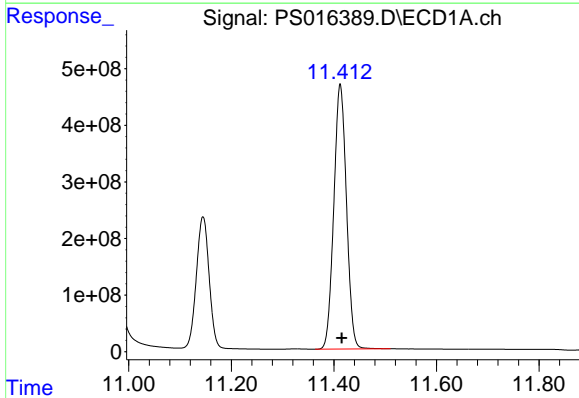
R.T.: 10.965 min
 Delta R.T.: -0.002 min
 Response: 7568489344
 Conc: 758.30 ng/ml

Instrument :
 ECD_S
 ClientSampled :



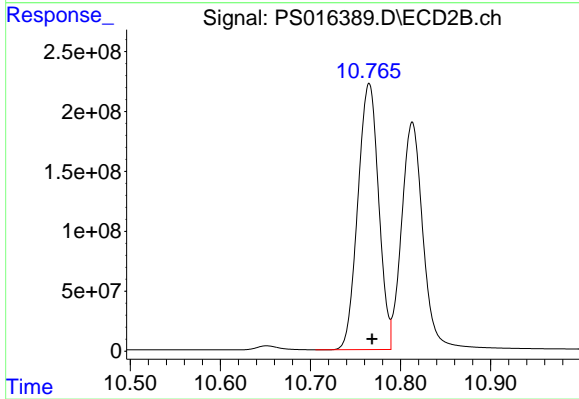
#15 Picloram

R.T.: 10.813 min
 Delta R.T.: -0.003 min
 Response: 3160165941
 Conc: 784.82 ng/ml



#16 DCPA

R.T.: 11.412 min
 Delta R.T.: -0.003 min
 Response: 8004014239
 Conc: 757.23 ng/ml



#16 DCPA

R.T.: 10.765 min
 Delta R.T.: -0.003 min
 Response: 3559779105
 Conc: 791.92 ng/ml