

Data Path : Z:\pestpcbsrv\HPCHEM1\ECD_S\Data\PS081324\
 Data File : PS027416.D
 Signal(s) : Signal #1: ECD1A.ch Signal #2: ECD2B.ch
 Acq On : 13 Aug 2024 21:08
 Operator : AR\AJ
 Sample : P3518-09
 Misc :
 ALS Vial : 10 Sample Multiplier: 1

Instrument :
 ECD_S
 ClientSampleId :
 OU4-TS-05-080724

Integration File signal 1: autoint1.e
 Integration File signal 2: autoint2.e
 Quant Time: Aug 21 07:46:48 2024
 Quant Method : Z:\pestpcbsrv\HPCHEM1\ECD_S\Method\PS080524.M
 Quant Title : 8080.M
 QLast Update : Tue Aug 06 08:10:22 2024
 Response via : Initial Calibration
 Integrator: ChemStation

Volume Inj. : 1 µl
 Signal #1 Phase : ZB-MR2 Signal #2 Phase: ZB-MR2
 Signal #1 Info : 30M x 0.32mm x0.5 Signal #2 Info : 30M x 0.32mm x 0.25µm

Compound	RT#1	RT#2	Resp#1	Resp#2	ng/ml	ng/ml

System Monitoring Compounds						
4) S 2,4-DCAA	7.173	7.740	615.7E6	421.7E6	244.786	226.761
Target Compounds						
1) T Dalapon	0.000	2.661f	0	192.4E6	N.D.	57.674
2) T 3,5-DICHL...	0.000	6.704	0	4374971	N.D.	1.596
3) T 4-Nitroph...	6.986	7.298	13065155	51509468	8.642	41.169 #
5) T DICAMBA	7.375	7.959	26980030	21419031	2.445	2.487
6) T MCPP	7.520f	8.030	38274676	126.9E6	5.030	22.280 #
7) T MCPA	7.726f	8.273	47130230	-1923401	4.865	N.D. #
8) T DICHLORPROP	8.086	8.654	120.4E6	2313667	45.519	1.107 #
9) T 2,4-D	8.287	8.972	9520326	2940229	3.339	1.262 #
10) T Pentachlo...	8.565	9.507	91123069	63292121	2.305	1.989
11) T 2,4,5-TP ...	9.175	9.844f	16966055	3357045	1.119	<MDL #
12) T 2,4,5-T	9.475f	10.288	31527650	246.5E6	2.159	19.552 #
13) T 2,4-DB	10.020	10.852	82226202	24397528	40.094	15.434 #
14) T DINOSEB	11.203	11.243	165.7E6	134.0E6	14.870	15.734
15) T Picloram	11.004	12.340	69299487	5831786	3.594	<MDL #
16) T DCPA	11.470f	12.286	107.9E6	7561370	5.974	<MDL #

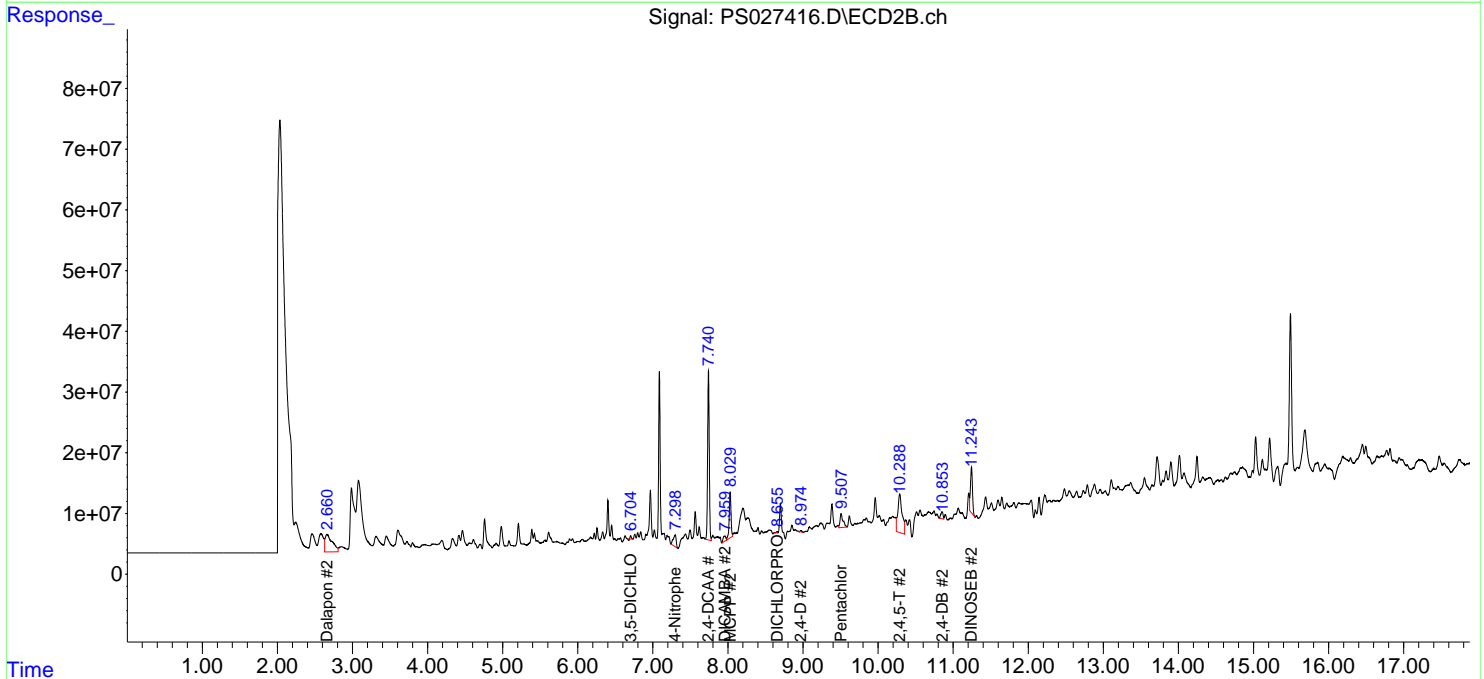
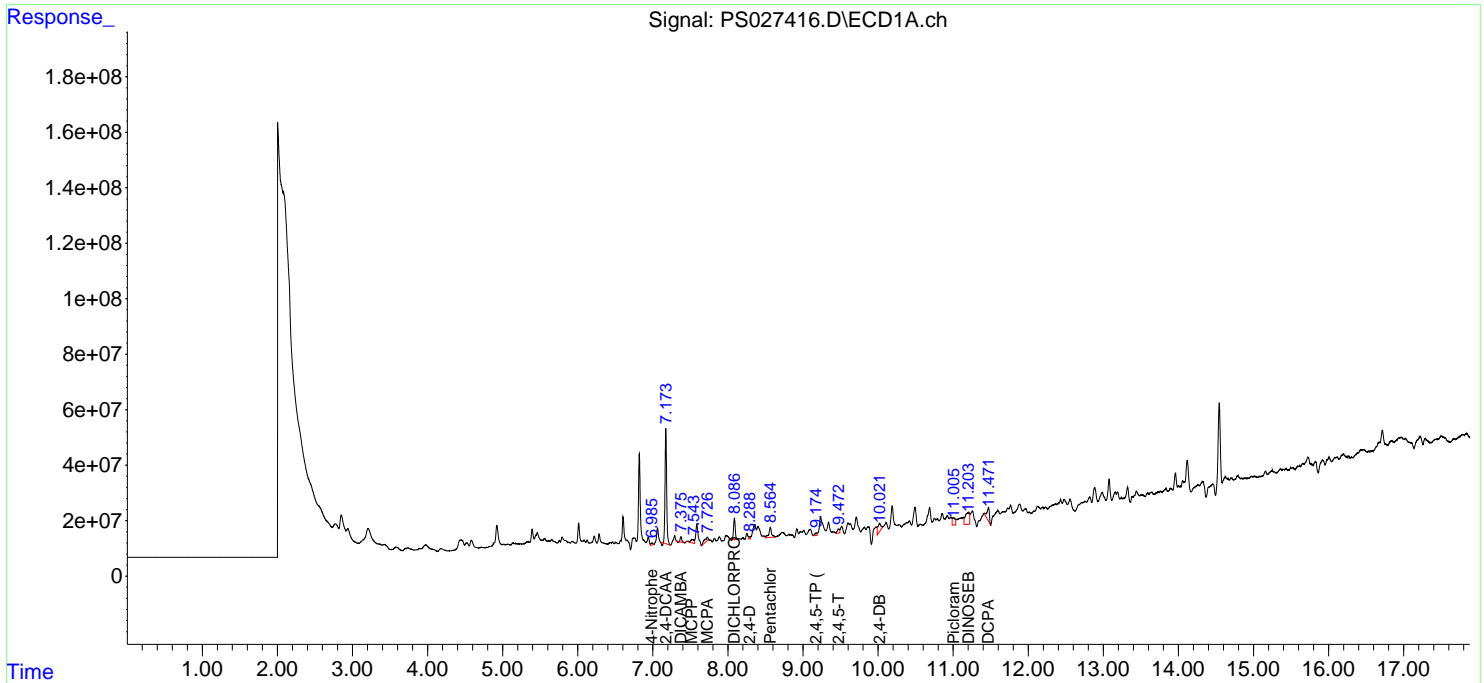
(f)=RT Delta > 1/2 Window (#)=Amounts differ by > 25% (m)=manual int.

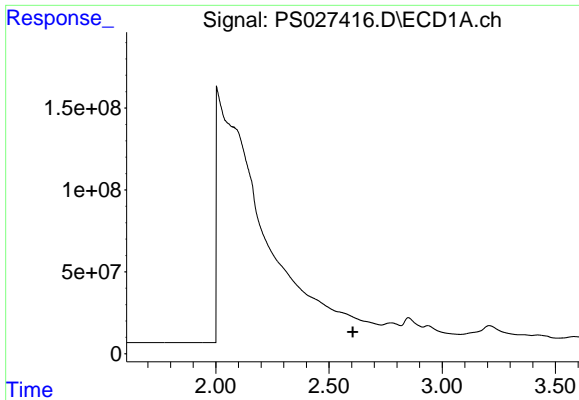
Data Path : Z:\pestpcbsrv\HPCHEM1\ECD_S\Data\PS081324\
 Data File : PS027416.D
 Signal(s) : Signal #1: ECD1A.ch Signal #2: ECD2B.ch
 Acq On : 13 Aug 2024 21:08
 Operator : AR\AJ
 Sample : P3518-09
 Misc :
 ALS Vial : 10 Sample Multiplier: 1

Instrument :
 ECD_S
 ClientSampleId :
 OU4-TS-05-080724

Integration File signal 1: autoint1.e
 Integration File signal 2: autoint2.e
 Quant Time: Aug 21 07:46:48 2024
 Quant Method : Z:\pestpcbsrv\HPCHEM1\ECD_S\Method\PS080524.M
 Quant Title : 8080.M
 QLast Update : Tue Aug 06 08:10:22 2024
 Response via : Initial Calibration
 Integrator: ChemStation

Volume Inj. : 1 µl
 Signal #1 Phase : ZB-MR1 Signal #2 Phase: ZB-MR2
 Signal #1 Info : 30M x 0.32mm x0.5 Signal #2 Info : 30M x 0.32mm x 0.25µm



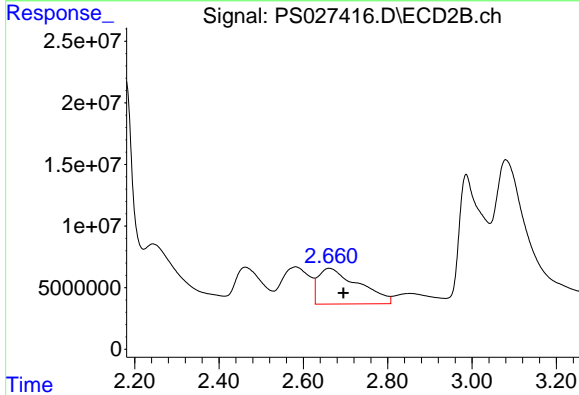


#1 Dalapon

R.T.: 0.000 min
 Exp R.T.: 2.605 min
 Response: 0
 Conc: N.D.

Instrument : ECD_S
 ClientSampleId : OU4-TS-05-080724

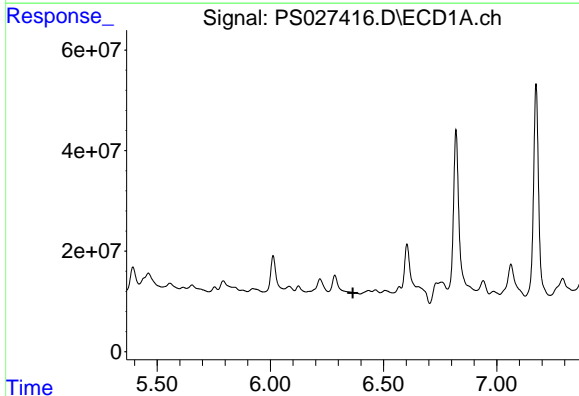
Time



#1 Dalapon

R.T.: 2.661 min
 Delta R.T.: -0.034 min
 Response: 192438840
 Conc: 57.67 ng/ml

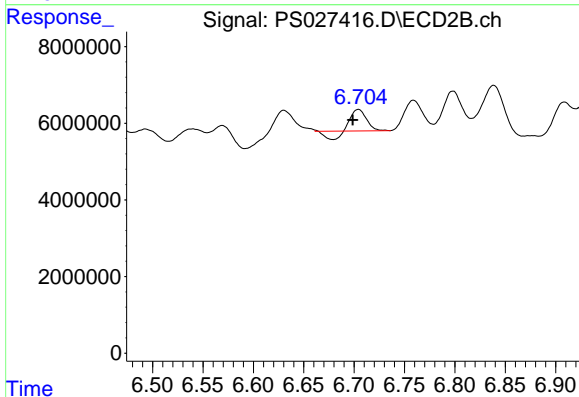
Time



#2 3,5-DICHLOROBENZOIC ACID

R.T.: 0.000 min
 Exp R.T.: 6.364 min
 Response: 0
 Conc: N.D.

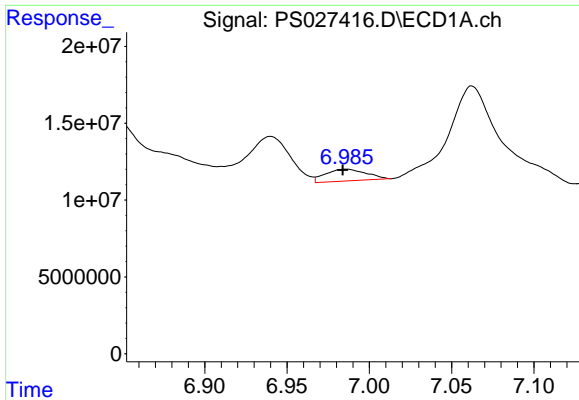
Time



#2 3,5-DICHLOROBENZOIC ACID

R.T.: 6.704 min
 Delta R.T.: 0.005 min
 Response: 4374971
 Conc: 1.60 ng/ml

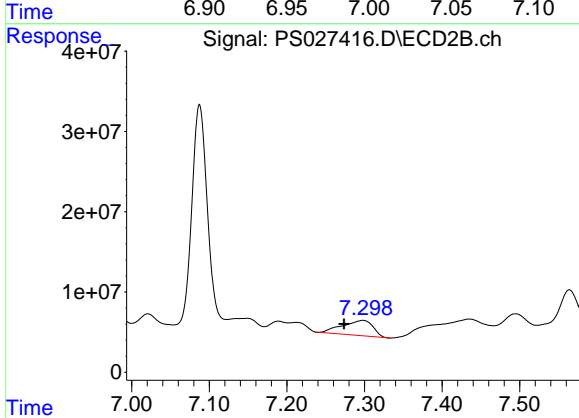
Time



#3 4-Nitrophenol

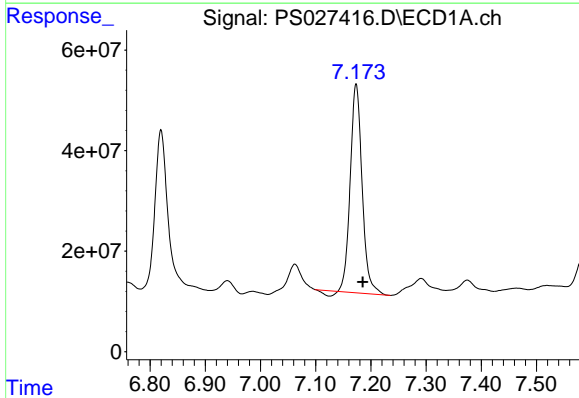
R.T.: 6.986 min
Delta R.T.: 0.002 min
Response: 13065155
Conc: 8.64 ng/ml

Instrument :
ECD_S
ClientSampleId :
OU4-TS-05-080724



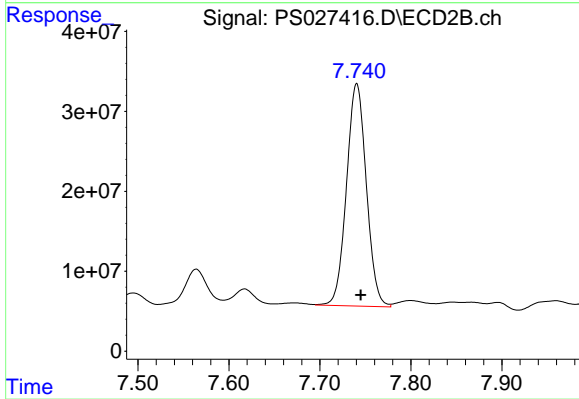
#3 4-Nitrophenol

R.T.: 7.298 min
Delta R.T.: 0.024 min
Response: 51509468
Conc: 41.17 ng/ml



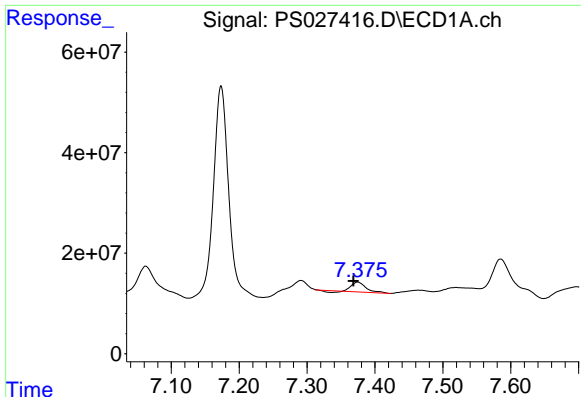
#4 2,4-DCAA

R.T.: 7.173 min
Delta R.T.: -0.012 min
Response: 615665637
Conc: 244.79 ng/ml



#4 2,4-DCAA

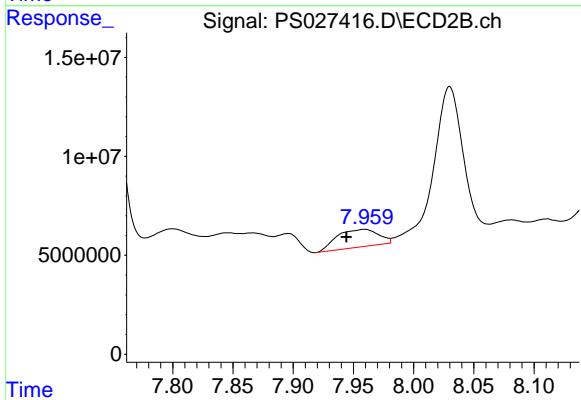
R.T.: 7.740 min
Delta R.T.: -0.005 min
Response: 421724221
Conc: 226.76 ng/ml



#5 DICAMBA

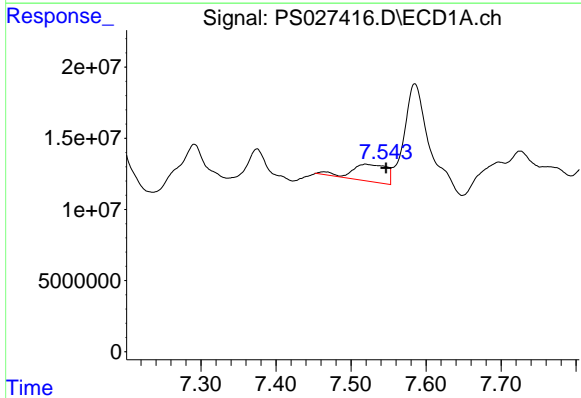
R.T.: 7.375 min
 Delta R.T.: 0.006 min
 Response: 26980030
 Conc: 2.44 ng/ml

Instrument :
 ECD_S
 ClientSampleId :
 OU4-TS-05-080724



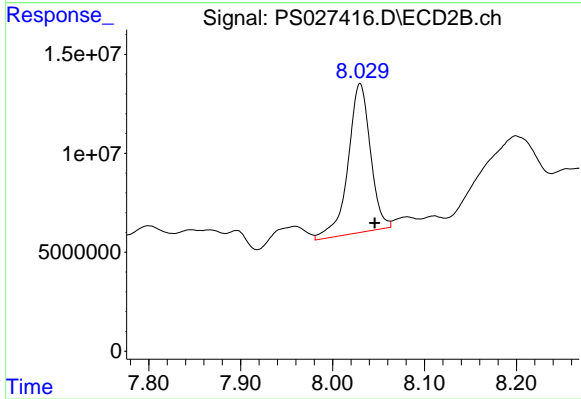
#5 DICAMBA

R.T.: 7.959 min
 Delta R.T.: 0.015 min
 Response: 21419031
 Conc: 2.49 ng/ml



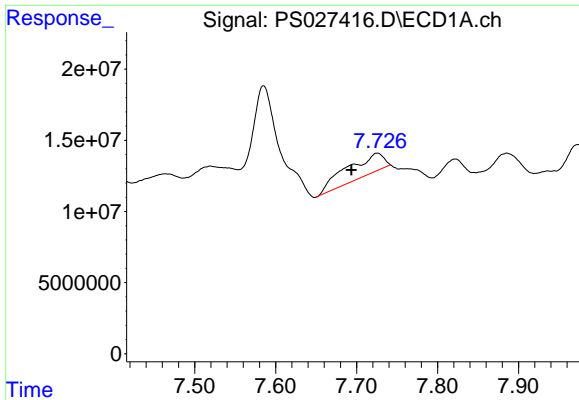
#6 MCPP

R.T.: 7.520 min
 Delta R.T.: -0.027 min
 Response: 38274676
 Conc: 5.03 ug/ml



#6 MCPP

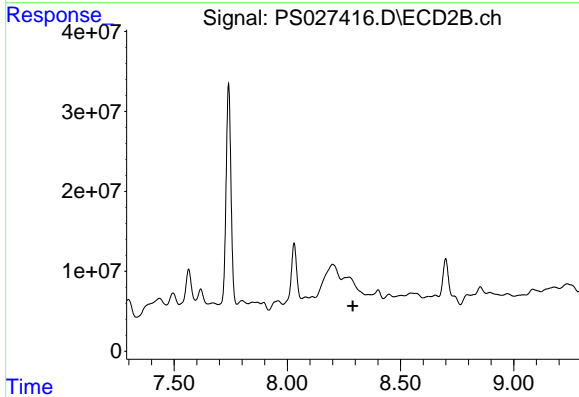
R.T.: 8.030 min
 Delta R.T.: -0.016 min
 Response: 126869575
 Conc: 22.28 ug/ml



#7 MCPA

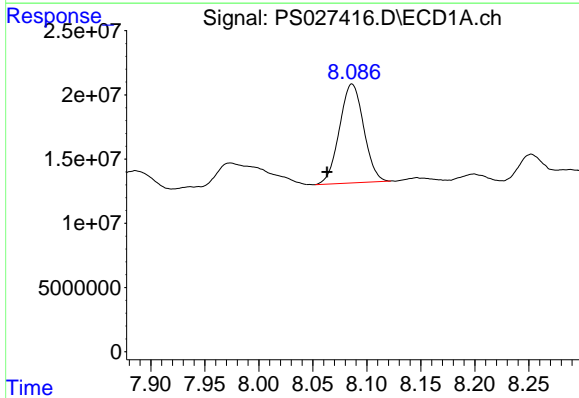
R.T.: 7.726 min
 Delta R.T.: 0.032 min
 Response: 47130230
 Conc: 4.86 ug/ml

Instrument :
 ECD_S
 ClientSampleId :
 OU4-TS-05-080724



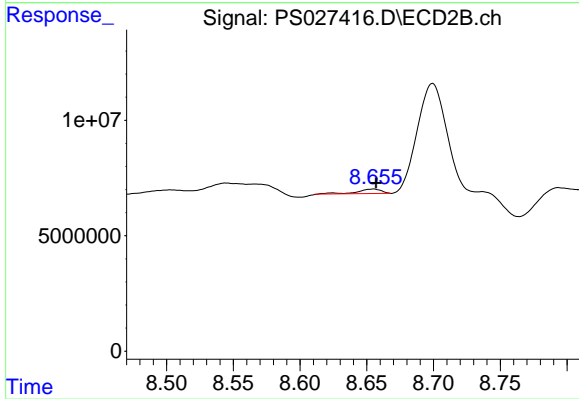
#7 MCPA

R.T.: 8.273 min
 Delta R.T.: -0.017 min
 Response: -1923401
 Conc: N.D.



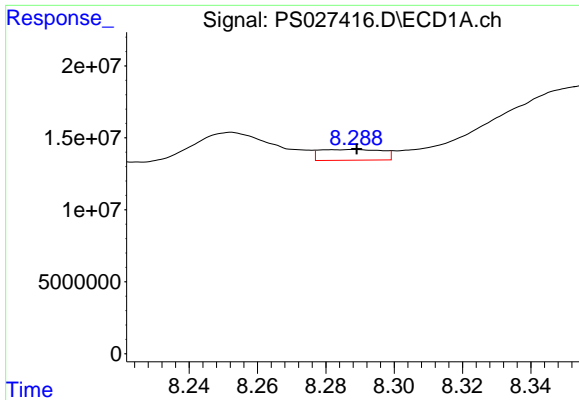
#8 DICHLORPROP

R.T.: 8.086 min
 Delta R.T.: 0.023 min
 Response: 120437091
 Conc: 45.52 ng/ml



#8 DICHLORPROP

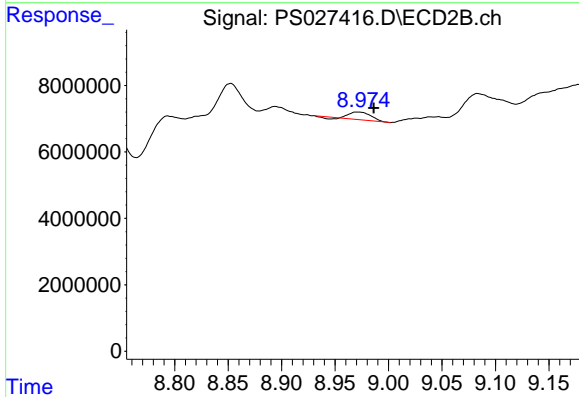
R.T.: 8.654 min
 Delta R.T.: -0.003 min
 Response: 2313667
 Conc: 1.11 ng/ml



#9 2,4-D

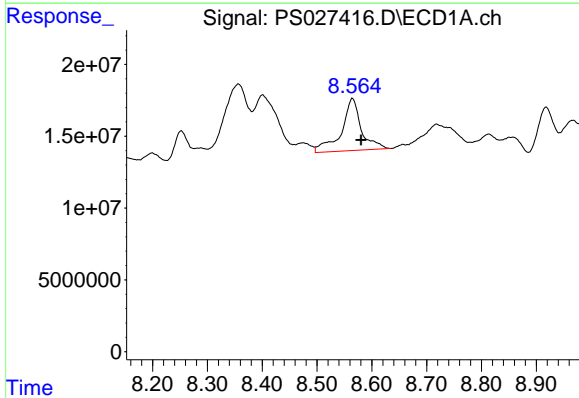
R.T.: 8.287 min
 Delta R.T.: -0.002 min
 Response: 9520326
 Conc: 3.34 ng/ml

Instrument :
 ECD_S
 ClientSampleId :
 OU4-TS-05-080724



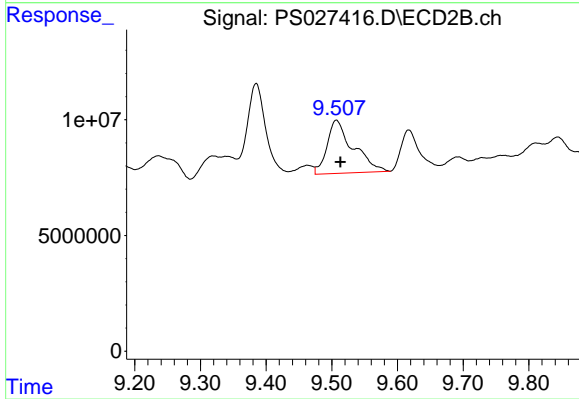
#9 2,4-D

R.T.: 8.972 min
 Delta R.T.: -0.014 min
 Response: 2940229
 Conc: 1.26 ng/ml



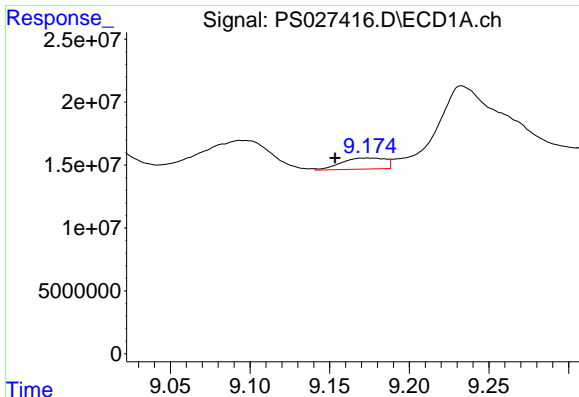
#10 Pentachlorophenol

R.T.: 8.565 min
 Delta R.T.: -0.016 min
 Response: 91123069
 Conc: 2.31 ng/ml



#10 Pentachlorophenol

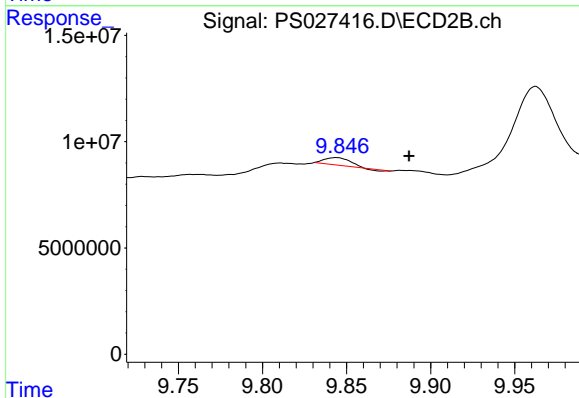
R.T.: 9.507 min
 Delta R.T.: -0.006 min
 Response: 63292121
 Conc: 1.99 ng/ml



#11 2,4,5-TP (SILVEX)

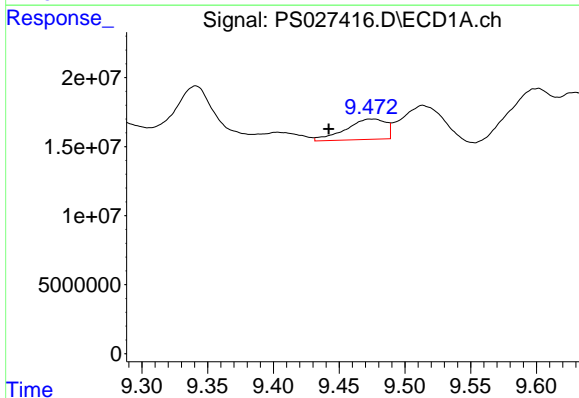
R.T.: 9.175 min
 Delta R.T.: 0.021 min
 Response: 16966055
 Conc: 1.12 ng/ml

Instrument :
 ECD_S
 ClientSampleId :
 OU4-TS-05-080724



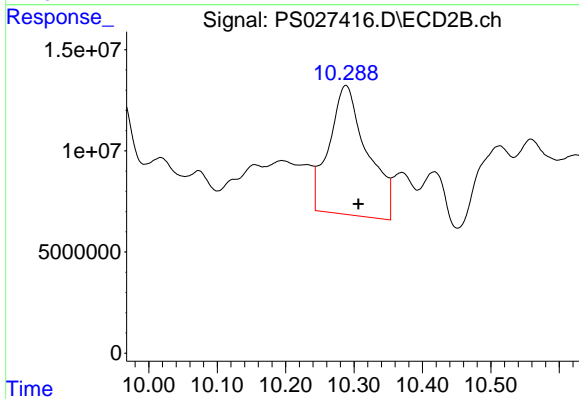
#11 2,4,5-TP (SILVEX)

R.T.: 9.844 min
 Delta R.T.: -0.043 min
 Response: 3357045
 Conc: N.D.



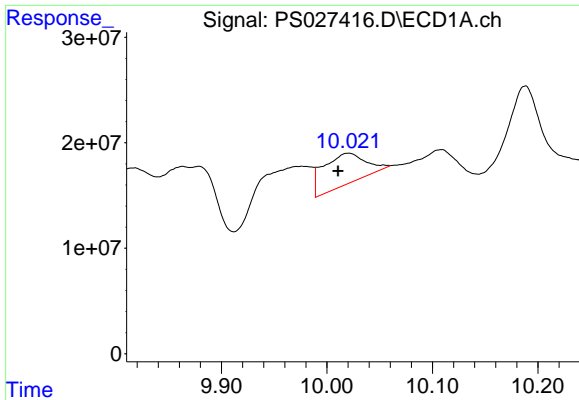
#12 2,4,5-T

R.T.: 9.475 min
 Delta R.T.: 0.033 min
 Response: 31527650
 Conc: 2.16 ng/ml



#12 2,4,5-T

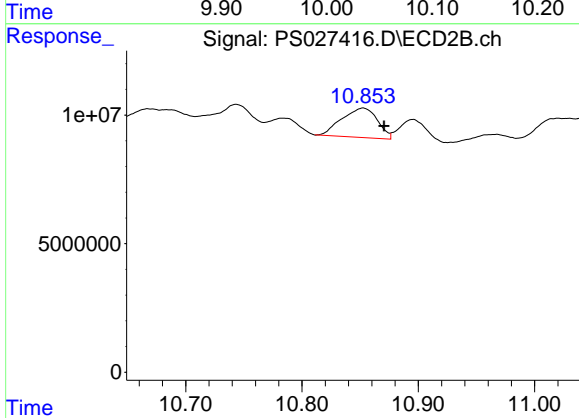
R.T.: 10.288 min
 Delta R.T.: -0.018 min
 Response: 246539663
 Conc: 19.55 ng/ml



#13 2,4-DB

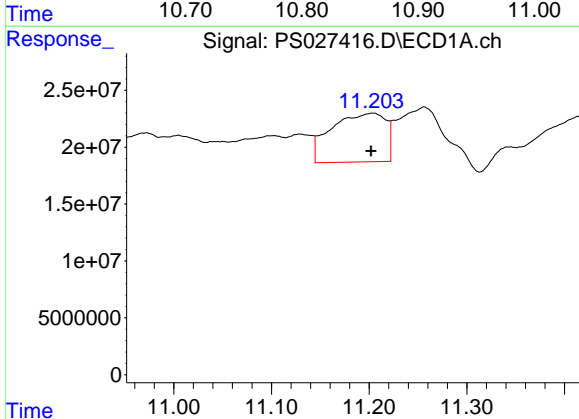
R.T.: 10.020 min
 Delta R.T.: 0.010 min
 Response: 82226202
 Conc: 40.09 ng/ml

Instrument :
 ECD_S
 ClientSampleId :
 OU4-TS-05-080724



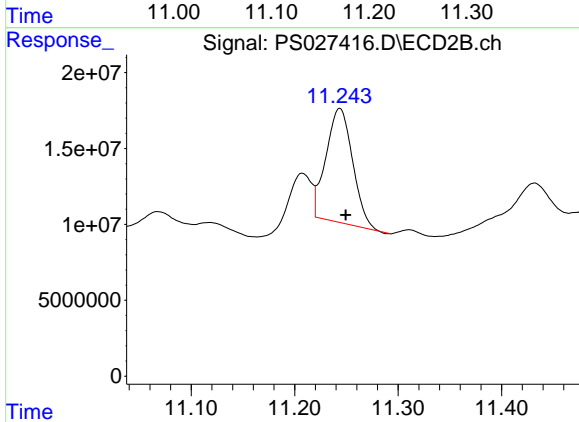
#13 2,4-DB

R.T.: 10.852 min
 Delta R.T.: -0.018 min
 Response: 24397528
 Conc: 15.43 ng/ml



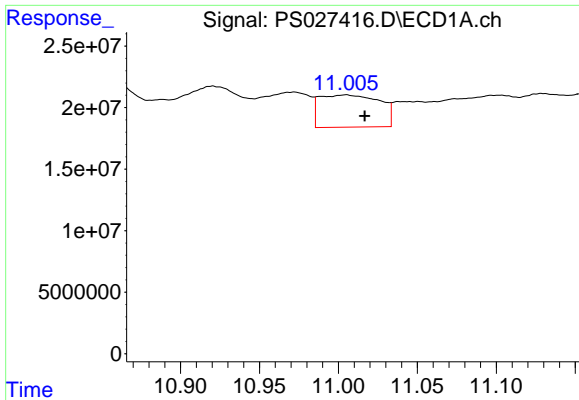
#14 DINOSEB

R.T.: 11.203 min
 Delta R.T.: 0.001 min
 Response: 165733771
 Conc: 14.87 ng/ml



#14 DINOSEB

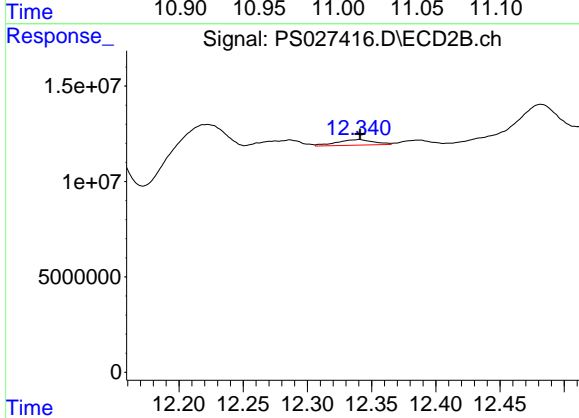
R.T.: 11.243 min
 Delta R.T.: -0.006 min
 Response: 134011878
 Conc: 15.73 ng/ml



#15 Picloram

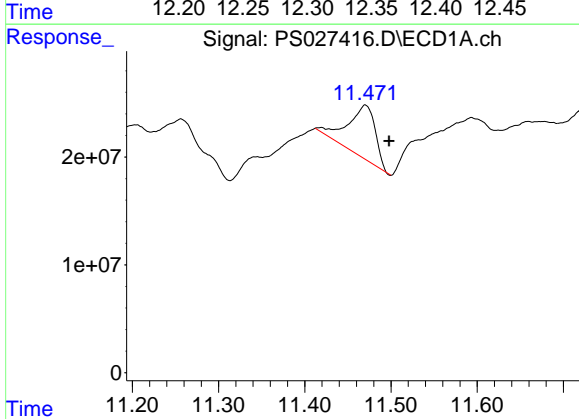
R.T.: 11.004 min
 Delta R.T.: -0.012 min
 Response: 69299487
 Conc: 3.59 ng/ml

Instrument :
 ECD_S
 ClientSampleId :
 OU4-TS-05-080724



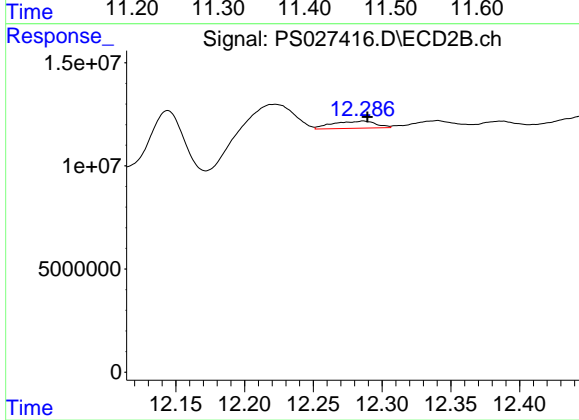
#15 Picloram

R.T.: 12.340 min
 Delta R.T.: -0.001 min
 Response: 5831786
 Conc: N.D.



#16 DCPA

R.T.: 11.470 min
 Delta R.T.: -0.028 min
 Response: 107912231
 Conc: 5.97 ng/ml



#16 DCPA

R.T.: 12.286 min
 Delta R.T.: -0.003 min
 Response: 7561370
 Conc: N.D.