

Data Path : Z:\pestpcbsrv\HPCHEM1\ECD_S\Data\PS081324\
 Data File : PS027417.D
 Signal(s) : Signal #1: ECD1A.ch Signal #2: ECD2B.ch
 Acq On : 13 Aug 2024 21:33
 Operator : AR\AJ
 Sample : P3518-11
 Misc :
 ALS Vial : 11 Sample Multiplier: 1

Instrument :
 ECD_S
 ClientSampleId :
 OU4-TS-06-080724

Integration File signal 1: autoint1.e
 Integration File signal 2: autoint2.e
 Quant Time: Aug 21 07:47:09 2024
 Quant Method : Z:\pestpcbsrv\HPCHEM1\ECD_S\Method\PS080524.M
 Quant Title : 8080.M
 QLast Update : Tue Aug 06 08:10:22 2024
 Response via : Initial Calibration
 Integrator: ChemStation

Volume Inj. : 1 µl
 Signal #1 Phase : ZB-MR2 Signal #2 Phase: ZB-MR2
 Signal #1 Info : 30M x 0.32mm x0.5 Signal #2 Info : 30M x 0.32mm x 0.25µm

Compound	RT#1	RT#2	Resp#1	Resp#2	ng/ml	ng/ml

System Monitoring Compounds						
4) S 2,4-DCAA	7.173	7.741	606.1E6	426.0E6	241.001	229.082
Target Compounds						
1) T Dalapon	0.000	2.659f	0	226.7E6	N.D.	67.952
2) T 3,5-DICHL...	0.000	6.705	0	4652126	N.D.	1.698
3) T 4-Nitroph...	6.985	7.299f	15211213	46847610	10.062	37.443 #
5) T DICAMBA	7.375	7.962	37706635	21251521	3.417	2.467 #
6) T MCPP	7.517f	8.031	33461292	131.9E6	4.397	23.159 #
7) T MCPA	7.725f	8.276	47425521	-118468	4.895	N.D. #
8) T DICHLORPROP	8.086	8.626f	131.6E6	6235838	49.754	2.983 #
9) T 2,4-D	8.252f	8.977	60014629	34770	21.049	<MDL #
10) T Pentachlo...	8.563	9.508	49880900	20321117	1.262	<MDL #
11) T 2,4,5-TP ...	0.000	9.883	0	1378240	N.D.	<MDL
12) T 2,4,5-T	9.474f	10.287	23111934	231.5E6	1.582	18.356 #
13) T 2,4-DB	10.021	10.856	82240144	23550656	40.101	14.898 #
14) T DINOSEB	11.201	11.243	188.7E6	98992938	16.931	11.623 #
15) T Picloram	11.002	12.336	64003937	9815066	3.320	<MDL #
16) T DCPA	11.464f	12.289	114.6E6	15347297	6.342	1.104 #

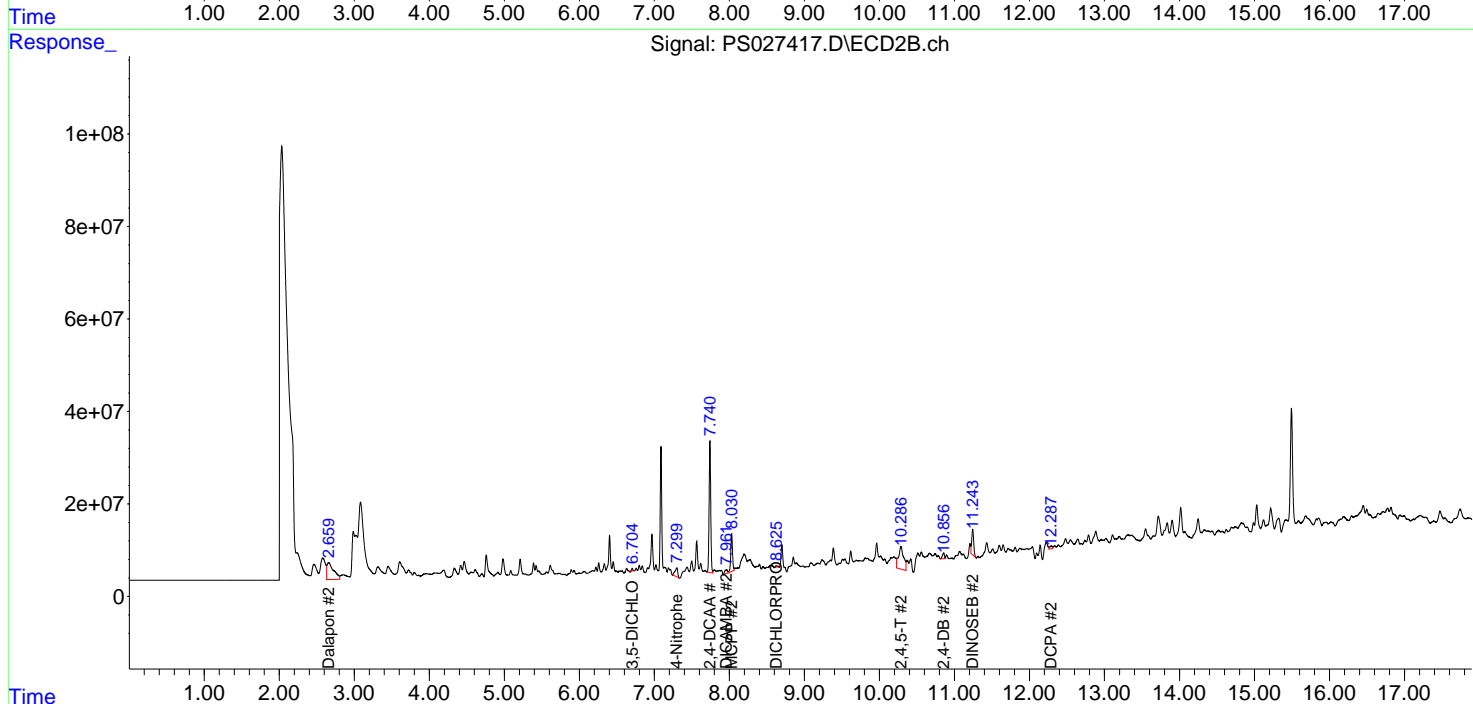
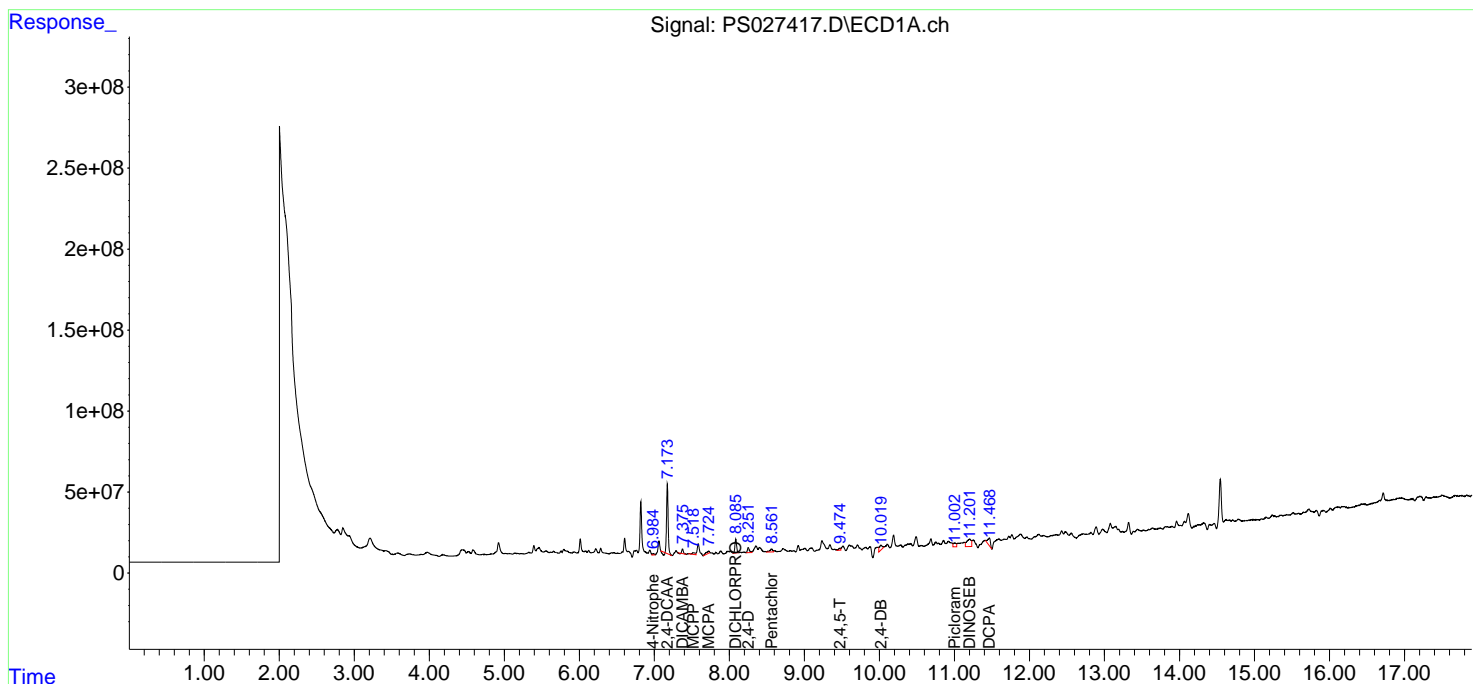
(f)=RT Delta > 1/2 Window (#)=Amounts differ by > 25% (m)=manual int.

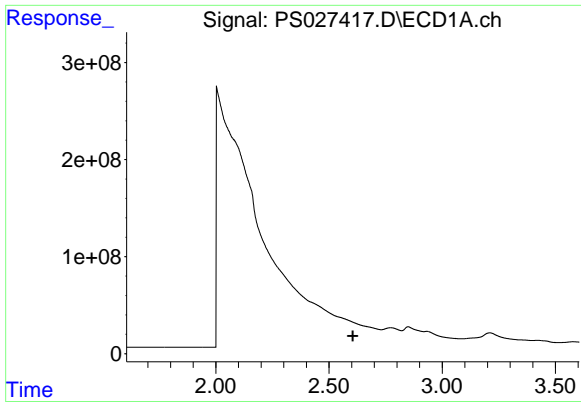
Data Path : Z:\pestpcbsrv\HPCHEM1\ECD_S\Data\PS081324\
 Data File : PS027417.D
 Signal(s) : Signal #1: ECD1A.ch Signal #2: ECD2B.ch
 Acq On : 13 Aug 2024 21:33
 Operator : AR\AJ
 Sample : P3518-11
 Misc :
 ALS Vial : 11 Sample Multiplier: 1

Instrument :
 ECD_S
 ClientSampleId :
 OU4-TS-06-080724

Integration File signal 1: autoint1.e
 Integration File signal 2: autoint2.e
 Quant Time: Aug 21 07:47:09 2024
 Quant Method : Z:\pestpcbsrv\HPCHEM1\ECD_S\Method\PS080524.M
 Quant Title : 8080.M
 QLast Update : Tue Aug 06 08:10:22 2024
 Response via : Initial Calibration
 Integrator: ChemStation

Volume Inj. : 1 µl
 Signal #1 Phase : ZB-MR1 Signal #2 Phase: ZB-MR2
 Signal #1 Info : 30M x 0.32mm x0.5 Signal #2 Info : 30M x 0.32mm x 0.25µm

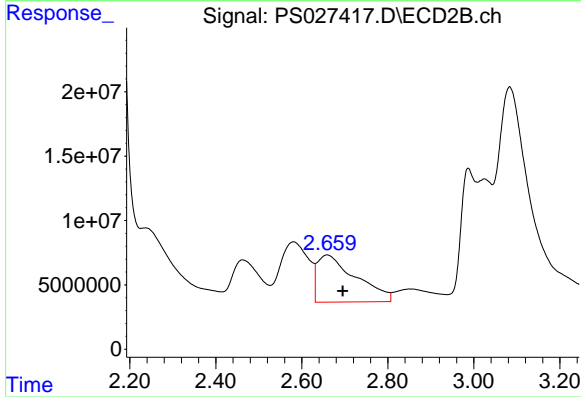




#1 Dalapon

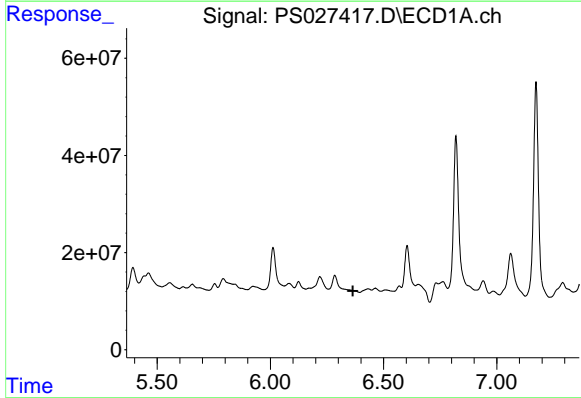
R.T.: 0.000 min
 Exp R.T. : 2.605 min
 Response: 0
 Conc: N.D.

Instrument :
 ECD_S
 ClientSampleId :
 OU4-TS-06-080724



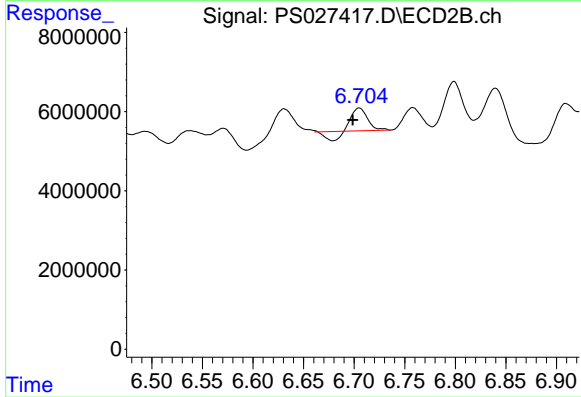
#1 Dalapon

R.T.: 2.659 min
 Delta R.T.: -0.036 min
 Response: 226734140
 Conc: 67.95 ng/ml



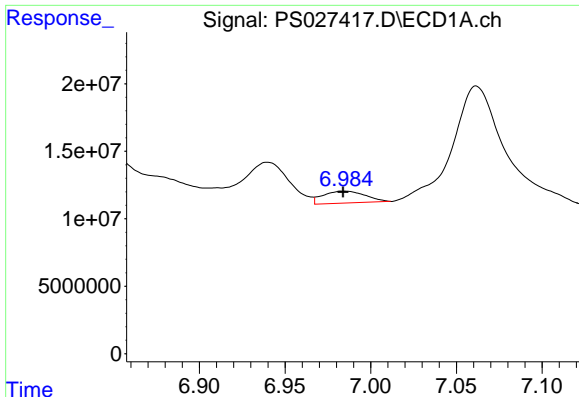
#2 3,5-DICHLOROBENZOIC ACID

R.T.: 0.000 min
 Exp R.T. : 6.364 min
 Response: 0
 Conc: N.D.



#2 3,5-DICHLOROBENZOIC ACID

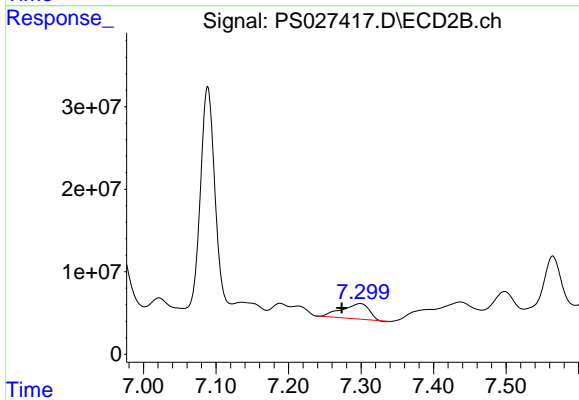
R.T.: 6.705 min
 Delta R.T.: 0.006 min
 Response: 4652126
 Conc: 1.70 ng/ml



#3 4-Nitrophenol

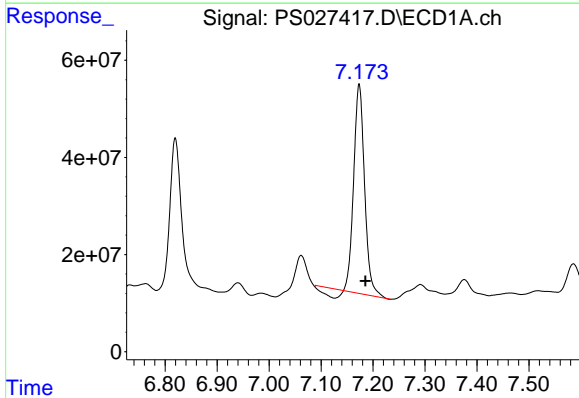
R.T.: 6.985 min
 Delta R.T.: 0.000 min
 Response: 15211213
 Conc: 10.06 ng/ml

Instrument :
 ECD_S
 ClientSampleId :
 OU4-TS-06-080724



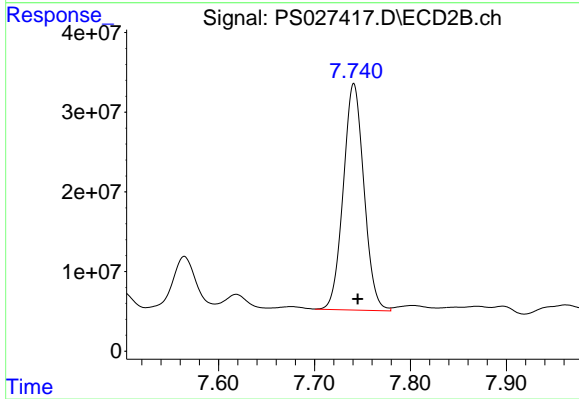
#3 4-Nitrophenol

R.T.: 7.299 min
 Delta R.T.: 0.025 min
 Response: 46847610
 Conc: 37.44 ng/ml



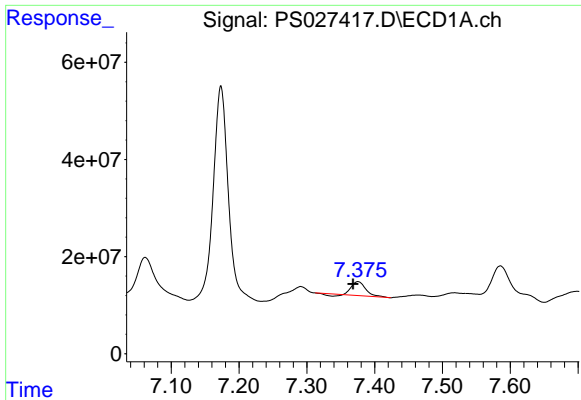
#4 2,4-DCAA

R.T.: 7.173 min
 Delta R.T.: -0.012 min
 Response: 606146356
 Conc: 241.00 ng/ml



#4 2,4-DCAA

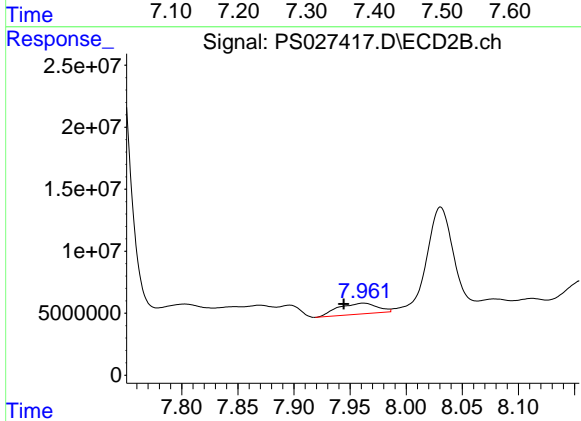
R.T.: 7.741 min
 Delta R.T.: -0.004 min
 Response: 426040469
 Conc: 229.08 ng/ml



#5 DICAMBA

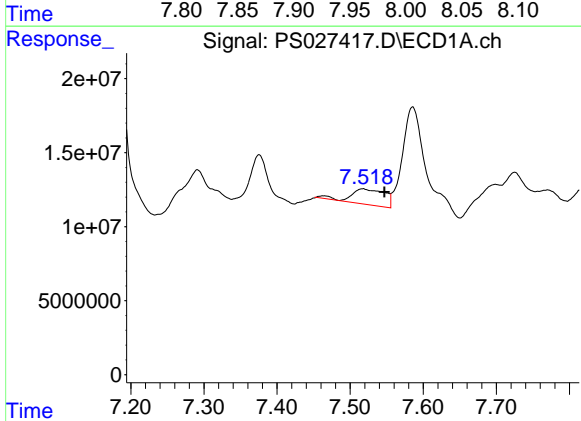
R.T.: 7.375 min
 Delta R.T.: 0.007 min
 Response: 37706635
 Conc: 3.42 ng/ml

Instrument :
 ECD_S
 ClientSampleId :
 OU4-TS-06-080724



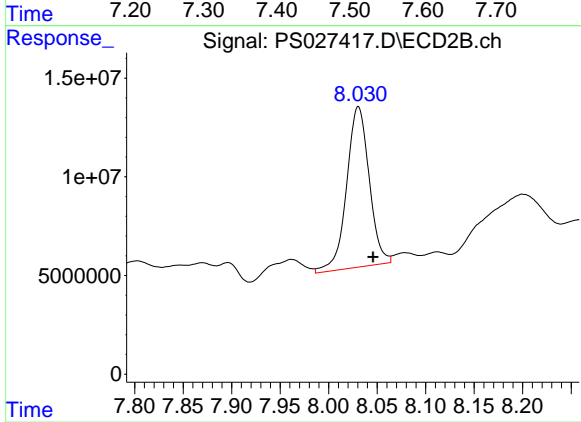
#5 DICAMBA

R.T.: 7.962 min
 Delta R.T.: 0.018 min
 Response: 21251521
 Conc: 2.47 ng/ml



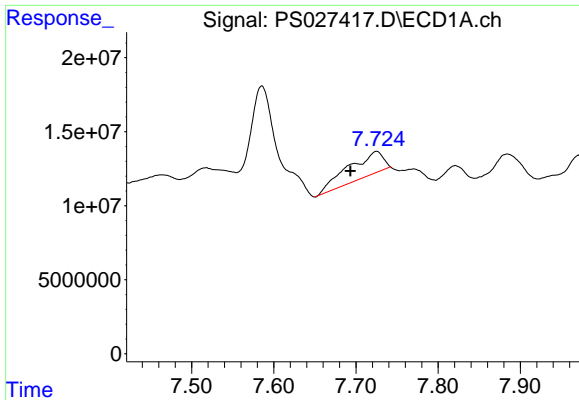
#6 MCP

R.T.: 7.517 min
 Delta R.T.: -0.030 min
 Response: 33461292
 Conc: 4.40 ug/ml



#6 MCP

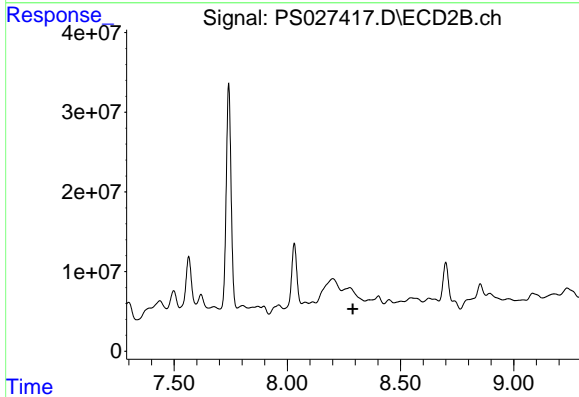
R.T.: 8.031 min
 Delta R.T.: -0.015 min
 Response: 131880084
 Conc: 23.16 ug/ml



#7 MCPA

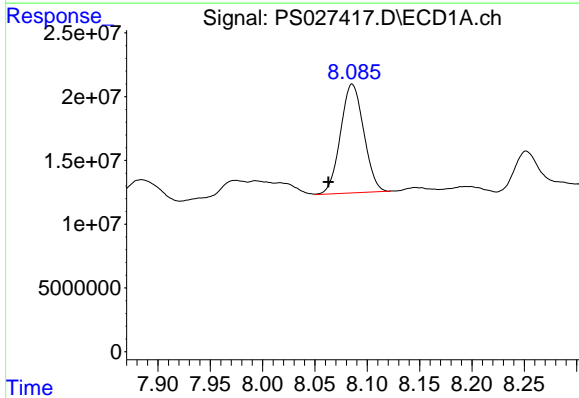
R.T.: 7.725 min
 Delta R.T.: 0.031 min
 Response: 47425521
 Conc: 4.90 ug/ml

Instrument :
 ECD_S
 ClientSampleId :
 OU4-TS-06-080724



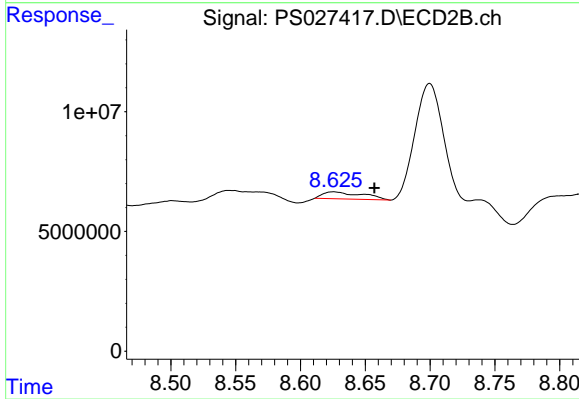
#7 MCPA

R.T.: 8.276 min
 Delta R.T.: -0.014 min
 Response: -118468
 Conc: N.D.



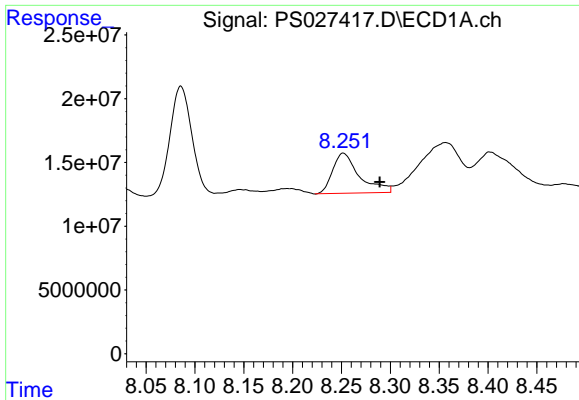
#8 DICHLORPROP

R.T.: 8.086 min
 Delta R.T.: 0.023 min
 Response: 131643593
 Conc: 49.75 ng/ml



#8 DICHLORPROP

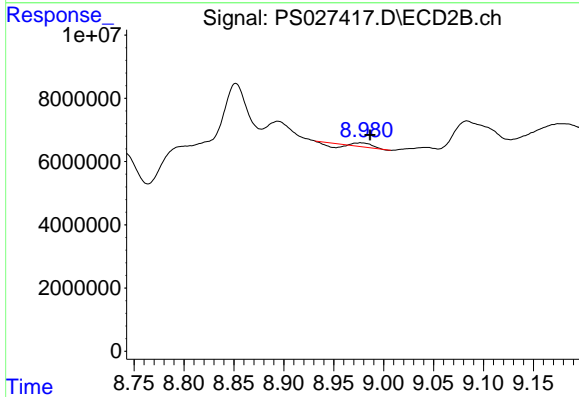
R.T.: 8.626 min
 Delta R.T.: -0.031 min
 Response: 6235838
 Conc: 2.98 ng/ml



#9 2,4-D

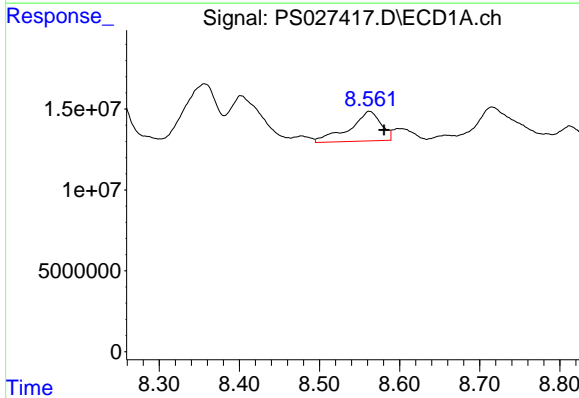
R.T.: 8.252 min
 Delta R.T.: -0.037 min
 Response: 60014629
 Conc: 21.05 ng/ml

Instrument :
 ECD_S
 ClientSampleId :
 OU4-TS-06-080724



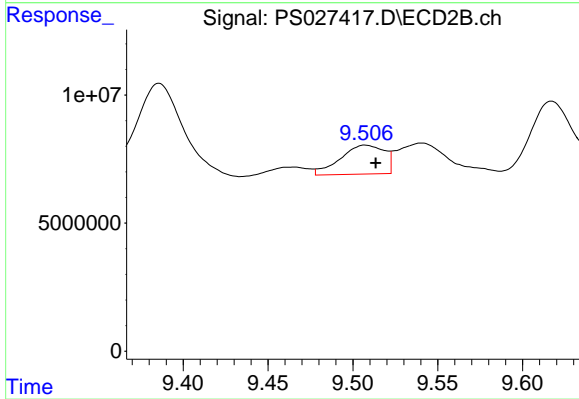
#9 2,4-D

R.T.: 8.977 min
 Delta R.T.: -0.009 min
 Response: 34770
 Conc: N.D.



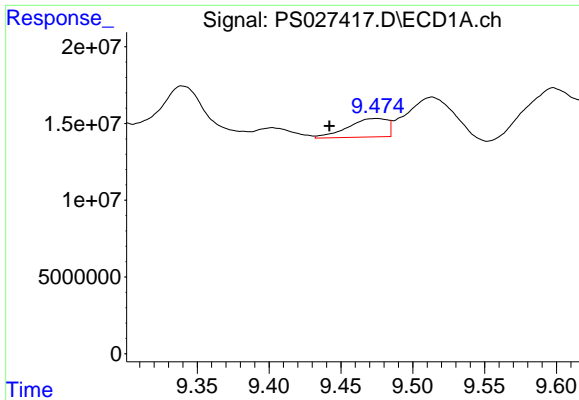
#10 Pentachlorophenol

R.T.: 8.563 min
 Delta R.T.: -0.018 min
 Response: 49880900
 Conc: 1.26 ng/ml



#10 Pentachlorophenol

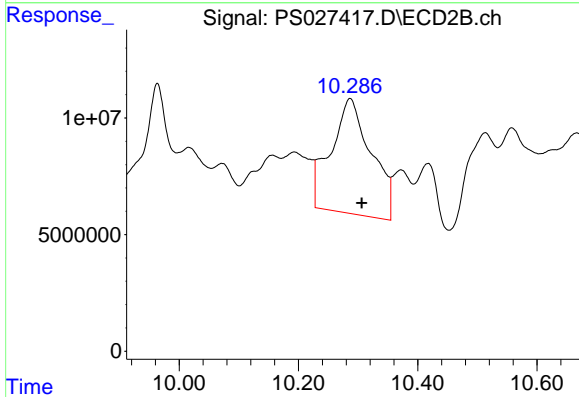
R.T.: 9.508 min
 Delta R.T.: -0.006 min
 Response: 20321117
 Conc: N.D.



#12 2,4,5-T

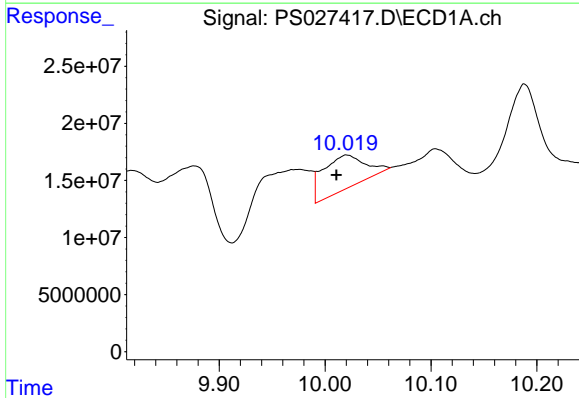
R.T.: 9.474 min
 Delta R.T.: 0.032 min
 Response: 23111934
 Conc: 1.58 ng/ml

Instrument :
 ECD_S
 ClientSampleId :
 OU4-TS-06-080724



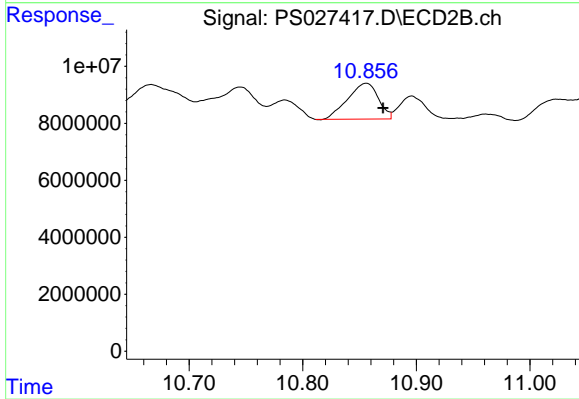
#12 2,4,5-T

R.T.: 10.287 min
 Delta R.T.: -0.020 min
 Response: 231451141
 Conc: 18.36 ng/ml



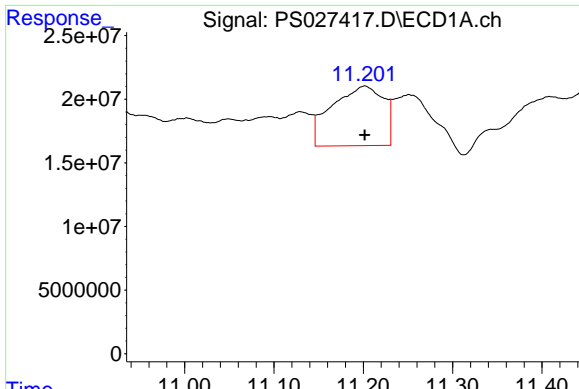
#13 2,4-DB

R.T.: 10.021 min
 Delta R.T.: 0.010 min
 Response: 82240144
 Conc: 40.10 ng/ml



#13 2,4-DB

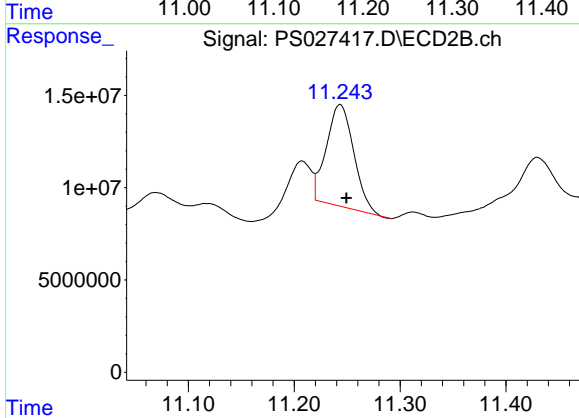
R.T.: 10.856 min
 Delta R.T.: -0.015 min
 Response: 23550656
 Conc: 14.90 ng/ml



#14 DINOSEB

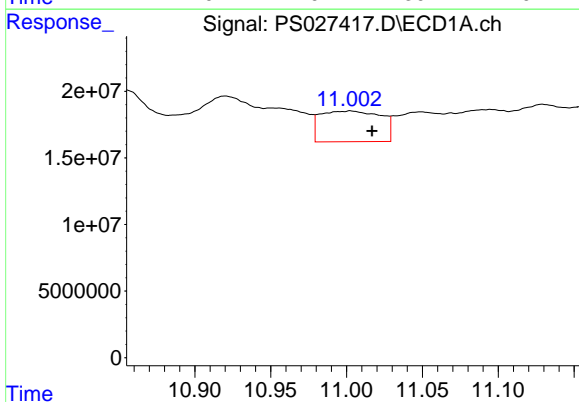
R.T.: 11.201 min
 Delta R.T.: 0.000 min
 Response: 188695045
 Conc: 16.93 ng/ml

Instrument :
 ECD_S
 ClientSampleId :
 OU4-TS-06-080724



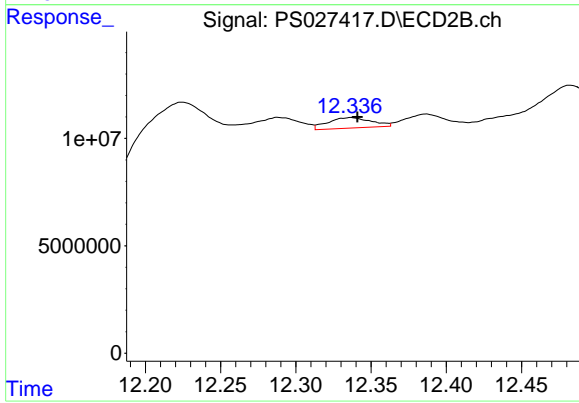
#14 DINOSEB

R.T.: 11.243 min
 Delta R.T.: -0.006 min
 Response: 98992938
 Conc: 11.62 ng/ml



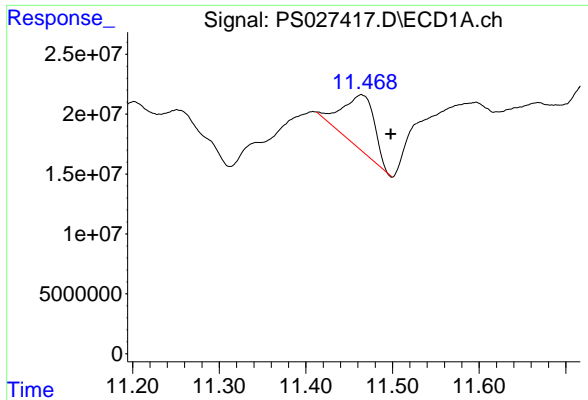
#15 Picloram

R.T.: 11.002 min
 Delta R.T.: -0.015 min
 Response: 64003937
 Conc: 3.32 ng/ml



#15 Picloram

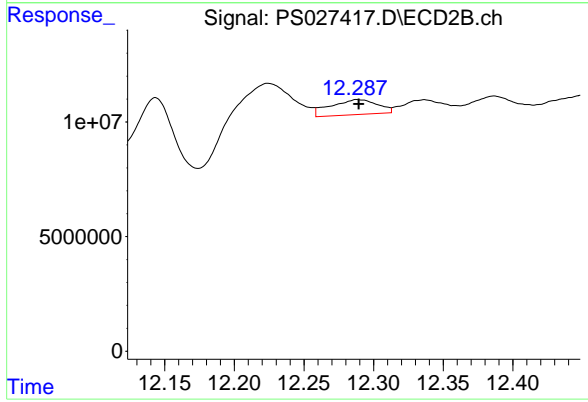
R.T.: 12.336 min
 Delta R.T.: -0.005 min
 Response: 9815066
 Conc: N.D.



#16 DCPA

R.T.: 11.464 min
 Delta R.T.: -0.034 min
 Response: 114569308
 Conc: 6.34 ng/ml

Instrument :
 ECD_S
 ClientSampleId :
 OU4-TS-06-080724



#16 DCPA

R.T.: 12.289 min
 Delta R.T.: 0.000 min
 Response: 15347297
 Conc: 1.10 ng/ml