

Data Path : Z:\pestpcbsrv\HPCHEM1\ECD\_S\Data\PS081324\  
 Data File : PS027420.D  
 Signal(s) : Signal #1: ECD1A.ch Signal #2: ECD2B.ch  
 Acq On : 13 Aug 2024 22:46  
 Operator : AR\AJ  
 Sample : HSTDCCC750  
 Misc :  
 ALS Vial : 3 Sample Multiplier: 1

Instrument :  
 ECD\_S  
 ClientSampleId :  
 HSTDCCC750

Integration File signal 1: autoint1.e  
 Integration File signal 2: autoint2.e  
 Quant Time: Aug 21 07:48:05 2024  
 Quant Method : Z:\pestpcbsrv\HPCHEM1\ECD\_S\Method\PS080524.M  
 Quant Title : 8080.M  
 QLast Update : Tue Aug 06 08:10:22 2024  
 Response via : Initial Calibration  
 Integrator: ChemStation

Volume Inj. : 1 µl  
 Signal #1 Phase : ZB-MR1 Signal #2 Phase: ZB-MR2  
 Signal #1 Info : 30M x 0.32mm x0.5 Signal #2 Info : 30M x 0.32mm x 0.25µm

	Compound	RT#1	RT#2	Resp#1	Resp#2	ng/ml	ng/ml
-----							
System Monitoring Compounds							
4) S	2,4-DCAA	7.174	7.741	1928.4E6	1413.3E6	766.711	759.921
Target Compounds							
1) T	Dalapon	2.600	2.693	2188.9E6	2244.0E6	669.794	672.532
2) T	3,5-DICHL...	6.355	6.696	2839.2E6	1938.5E6	713.068	707.357
3) T	4-Nitroph...	6.972	7.269	1056.6E6	857.9E6	698.882	685.672
5) T	DICAMBA	7.356	7.940	7957.5E6	6282.6E6	721.010	729.378
6) T	MCPD	7.535	8.042	563.5E6	420.5E6	74.053	73.851
7) T	MCPA	7.681	8.285	716.6E6	556.9E6	73.961	73.729
8) T	DICHLORPROP	8.049	8.651	1906.6E6	1488.4E6	720.585	711.967
9) T	2,4-D	8.275	8.980	2062.0E6	1666.7E6	723.206	715.429
10) T	Pentachlo...	8.566	9.508	29627.8E6	23321.2E6	749.519	732.745
11) T	2,4,5-TP ...	9.137	9.881	11294.3E6	9298.0E6	744.675	728.050
12) T	2,4,5-T	9.425	10.299	11013.4E6	9324.0E6	754.051	739.460
13) T	2,4-DB	9.992	10.864	1556.0E6	1142.3E6	758.724	722.640
14) T	DINOSEB	11.181	11.243	8378.4E6	6121.6E6	751.749	718.743
15) T	Picloram	10.997	12.334	14456.4E6	13281.0E6	749.798	736.153
16) T	DCPA	11.478	12.283	13703.4E6	10168.1E6	758.572	731.180

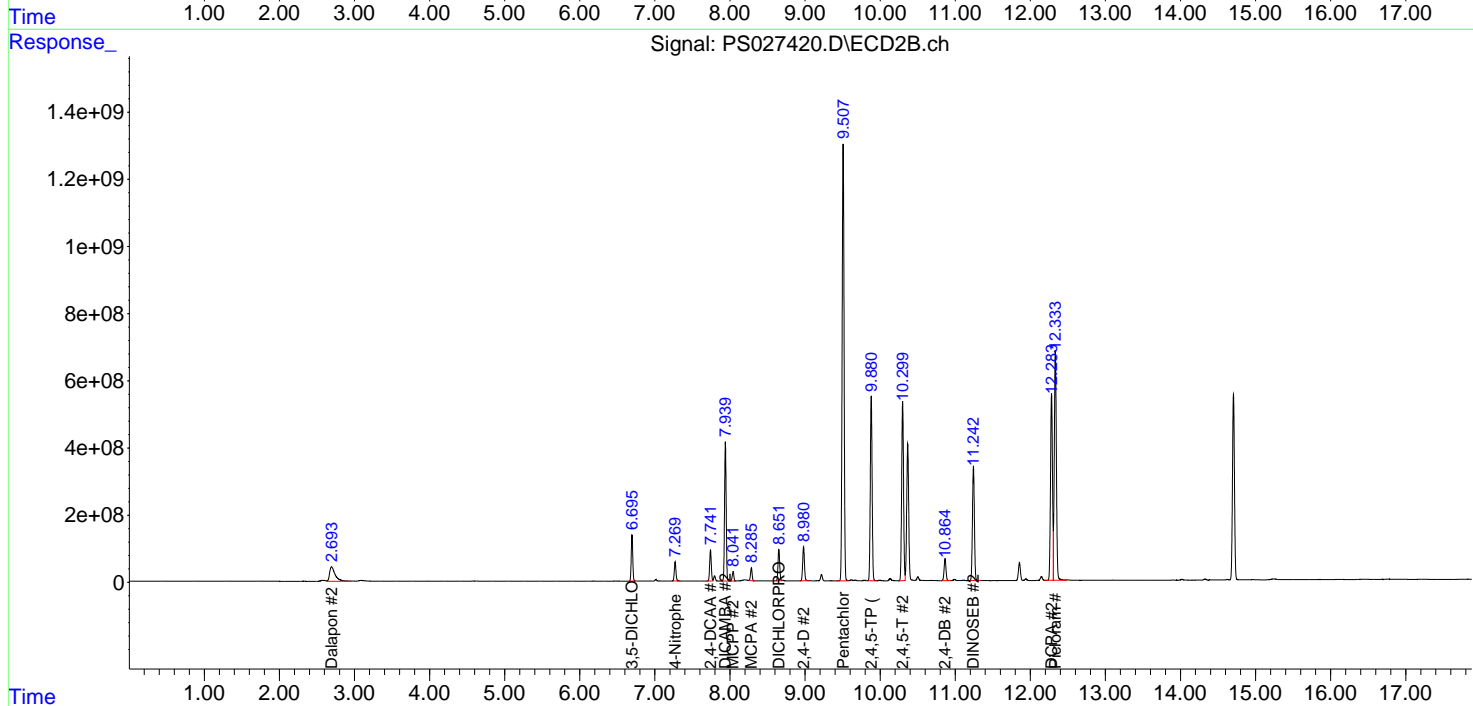
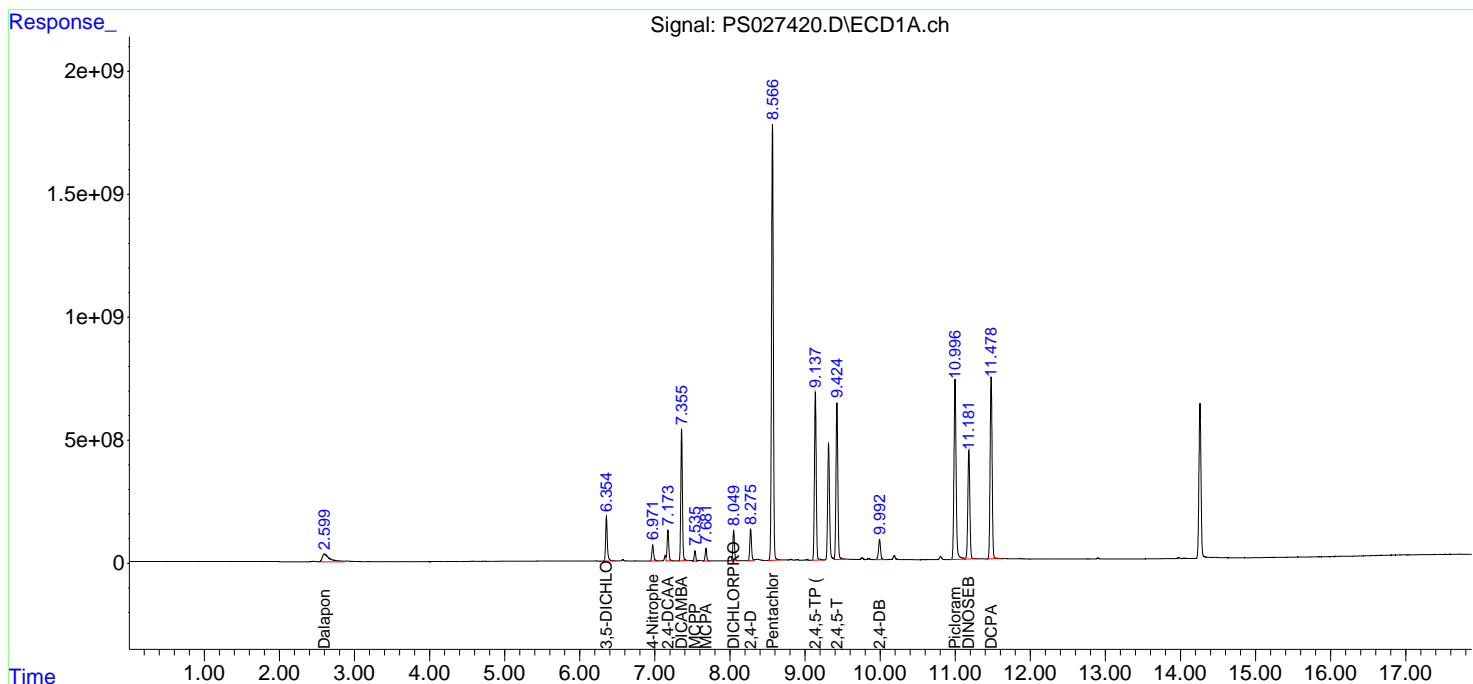
(f)=RT Delta > 1/2 Window (#)=Amounts differ by > 25% (m)=manual int.

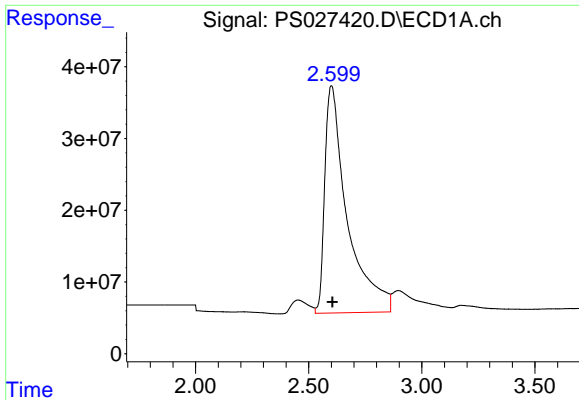
Data Path : Z:\pestpcbsrv\HPCHEM1\ECD\_S\Data\PS081324\  
 Data File : PS027420.D  
 Signal(s) : Signal #1: ECD1A.ch Signal #2: ECD2B.ch  
 Acq On : 13 Aug 2024 22:46  
 Operator : AR\AJ  
 Sample : HSTDCCC750  
 Misc :  
 ALS Vial : 3 Sample Multiplier: 1

Instrument :  
 ECD\_S  
 ClientSampleId :  
 HSTDCCC750

Integration File signal 1: autoint1.e  
 Integration File signal 2: autoint2.e  
 Quant Time: Aug 21 07:48:05 2024  
 Quant Method : Z:\pestpcbsrv\HPCHEM1\ECD\_S\Method\PS080524.M  
 Quant Title : 8080.M  
 QLast Update : Tue Aug 06 08:10:22 2024  
 Response via : Initial Calibration  
 Integrator: ChemStation

Volume Inj. : 1 µl  
 Signal #1 Phase : ZB-MR1 Signal #2 Phase: ZB-MR2  
 Signal #1 Info : 30M x 0.32mm x0.5 Signal #2 Info : 30M x 0.32mm x 0.25µm

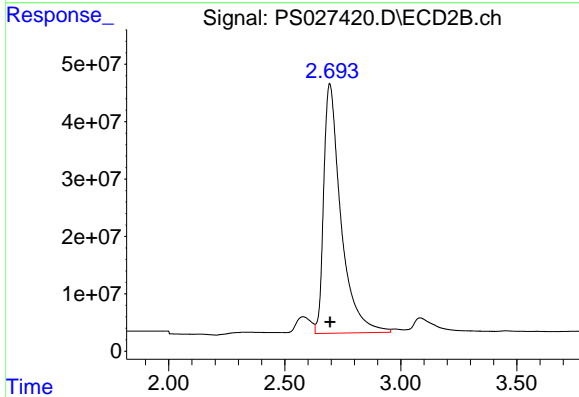




#1 Dalapon

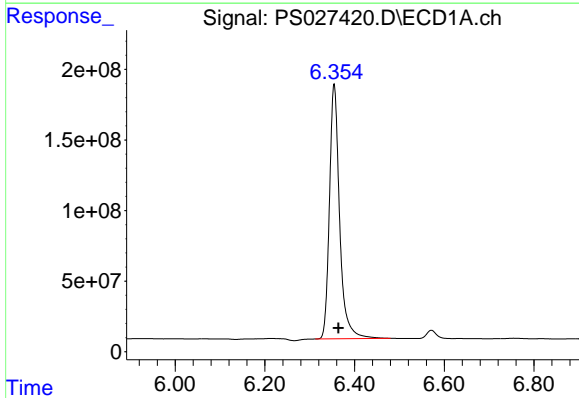
R.T.: 2.600 min  
 Delta R.T.: -0.005 min  
 Response: 2188904082  
 Conc: 669.79 ng/ml

Instrument :  
 ECD\_S  
 ClientSampleId :  
 HSTDCCC750



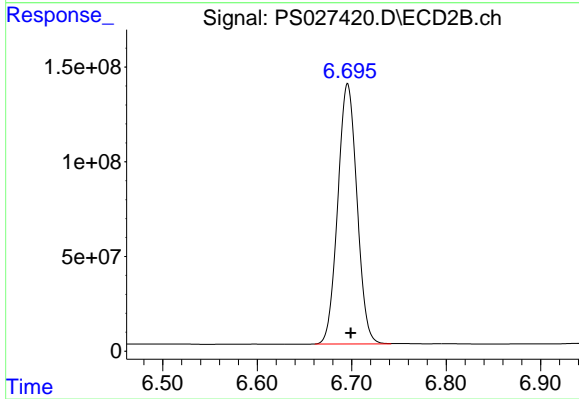
#1 Dalapon

R.T.: 2.693 min  
 Delta R.T.: -0.002 min  
 Response: 2244029054  
 Conc: 672.53 ng/ml



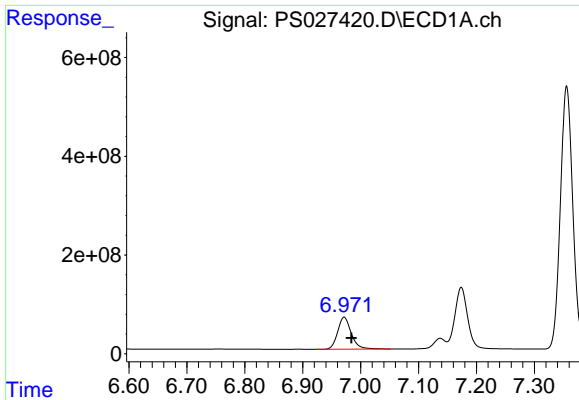
#2 3,5-DICHLOROBENZOIC ACID

R.T.: 6.355 min  
 Delta R.T.: -0.010 min  
 Response: 2839243084  
 Conc: 713.07 ng/ml



#2 3,5-DICHLOROBENZOIC ACID

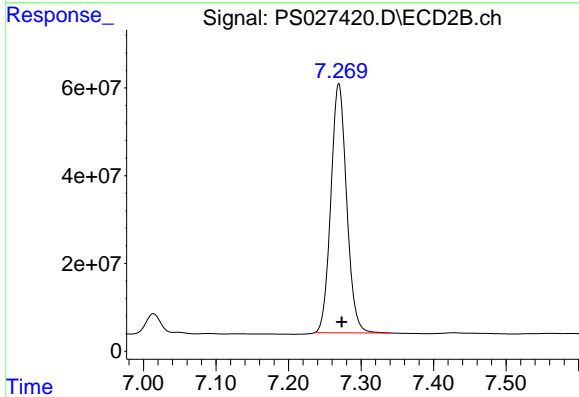
R.T.: 6.696 min  
 Delta R.T.: -0.003 min  
 Response: 1938528419  
 Conc: 707.36 ng/ml



#3 4-Nitrophenol

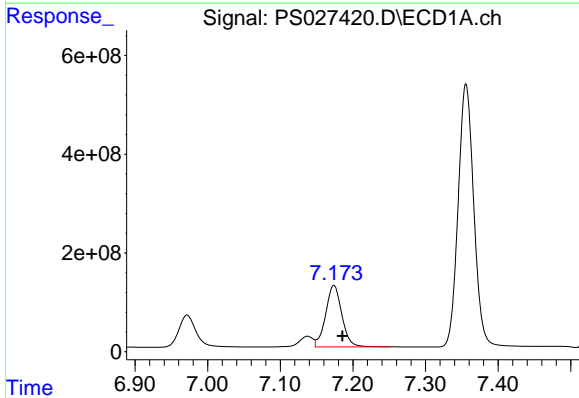
R.T.: 6.972 min  
 Delta R.T.: -0.012 min  
 Response: 1056568621  
 Conc: 698.88 ng/ml

Instrument :  
 ECD\_S  
 ClientSampleId :  
 HSTDCCC750



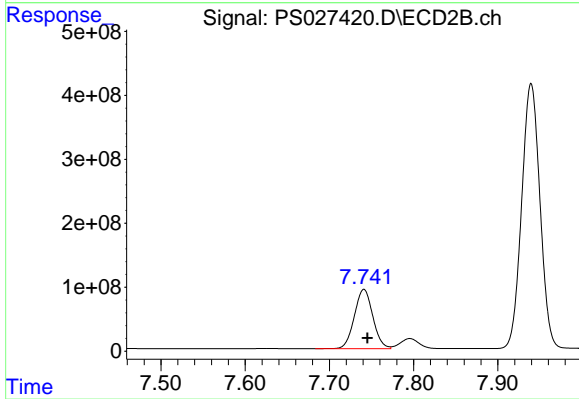
#3 4-Nitrophenol

R.T.: 7.269 min  
 Delta R.T.: -0.004 min  
 Response: 857899830  
 Conc: 685.67 ng/ml



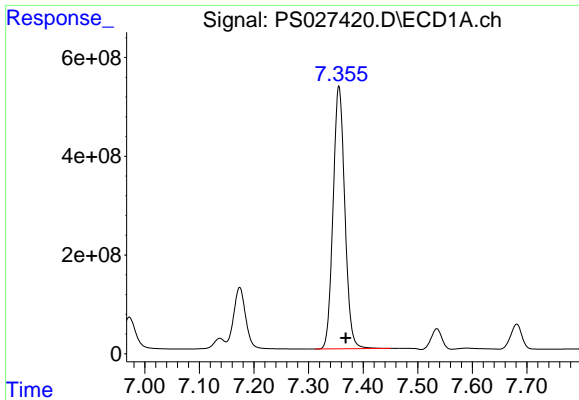
#4 2,4-DCAA

R.T.: 7.174 min  
 Delta R.T.: -0.012 min  
 Response: 1928369620  
 Conc: 766.71 ng/ml



#4 2,4-DCAA

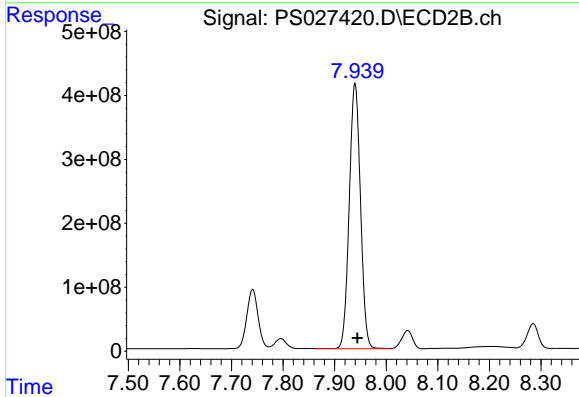
R.T.: 7.741 min  
 Delta R.T.: -0.004 min  
 Response: 1413279549  
 Conc: 759.92 ng/ml



#5 DICAMBA

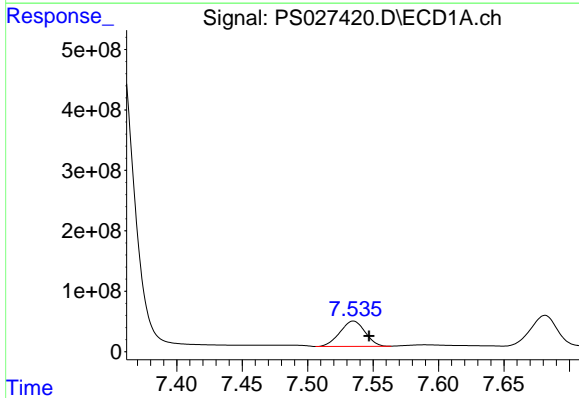
R.T.: 7.356 min  
 Delta R.T.: -0.012 min  
 Response: 7957460235  
 Conc: 721.01 ng/ml

Instrument :  
 ECD\_S  
 ClientSampleId :  
 HSTDCCC750



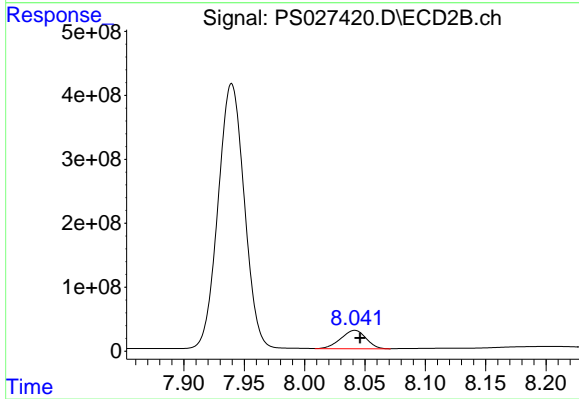
#5 DICAMBA

R.T.: 7.940 min  
 Delta R.T.: -0.005 min  
 Response: 6282557778  
 Conc: 729.38 ng/ml



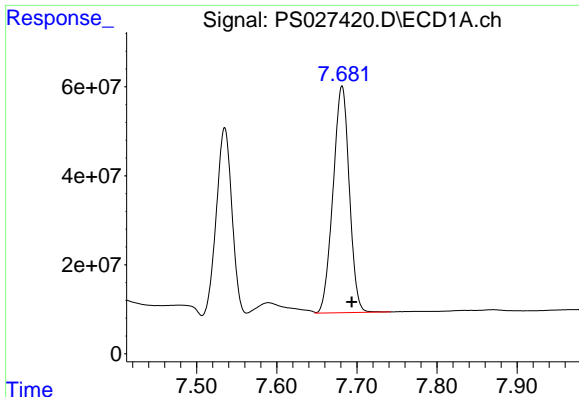
#6 MCP

R.T.: 7.535 min  
 Delta R.T.: -0.012 min  
 Response: 563530213  
 Conc: 74.05 ug/ml



#6 MCP

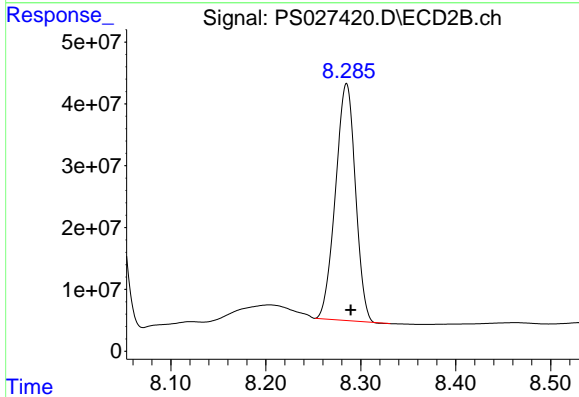
R.T.: 8.042 min  
 Delta R.T.: -0.004 min  
 Response: 420538488  
 Conc: 73.85 ug/ml



#7 MCPA

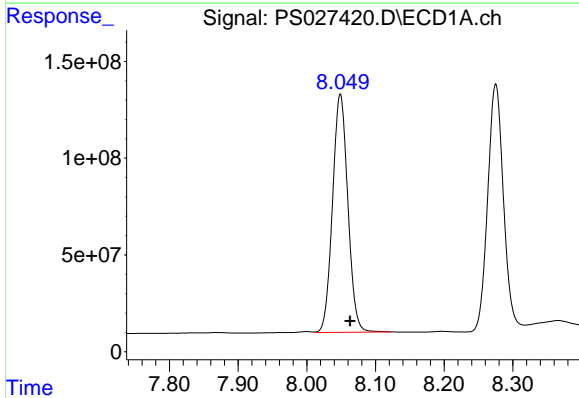
R.T.: 7.681 min  
 Delta R.T.: -0.012 min  
 Response: 716556324  
 Conc: 73.96 ug/ml

Instrument :  
 ECD\_S  
 ClientSampleId :  
 HSTDCCC750



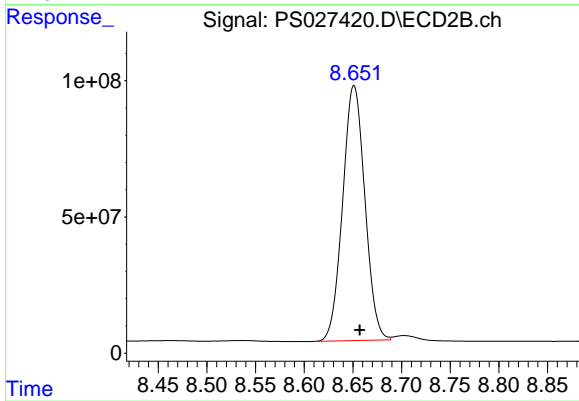
#7 MCPA

R.T.: 8.285 min  
 Delta R.T.: -0.004 min  
 Response: 556948618  
 Conc: 73.73 ug/ml



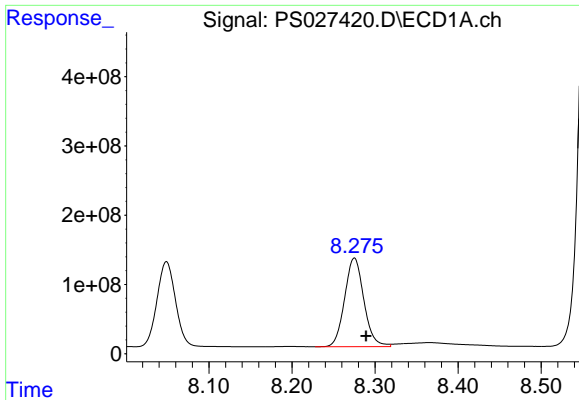
#8 DICHLORPROP

R.T.: 8.049 min  
 Delta R.T.: -0.014 min  
 Response: 1906590898  
 Conc: 720.59 ng/ml



#8 DICHLORPROP

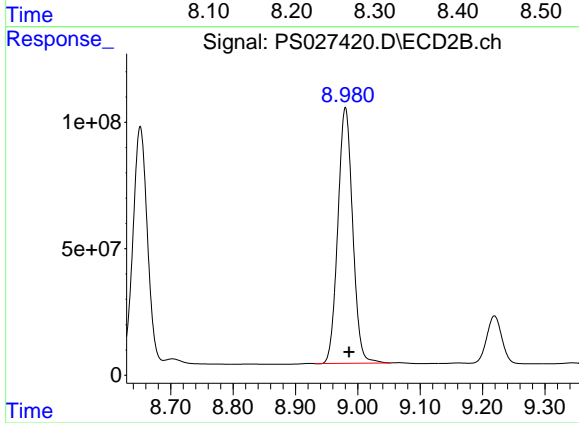
R.T.: 8.651 min  
 Delta R.T.: -0.006 min  
 Response: 1488352675  
 Conc: 711.97 ng/ml



#9 2,4-D

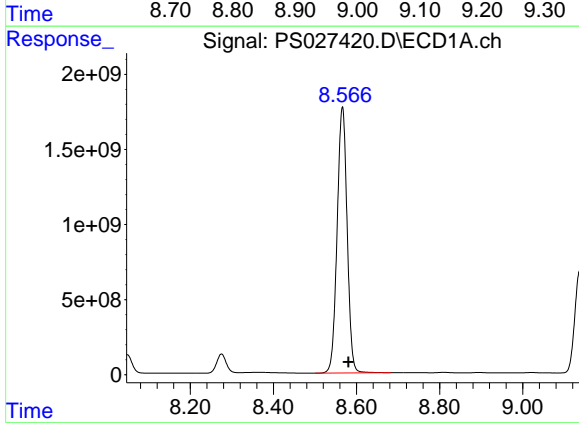
R.T.: 8.275 min  
Delta R.T.: -0.014 min  
Response: 2061954928  
Conc: 723.21 ng/ml

Instrument :  
ECD\_S  
ClientSampleId :  
HSTDCCC750



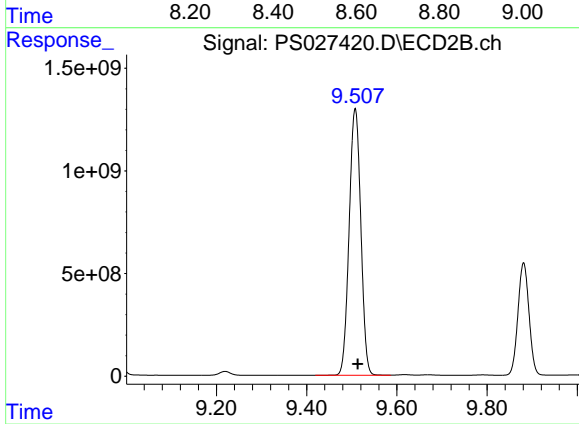
#9 2,4-D

R.T.: 8.980 min  
Delta R.T.: -0.006 min  
Response: 1666735085  
Conc: 715.43 ng/ml



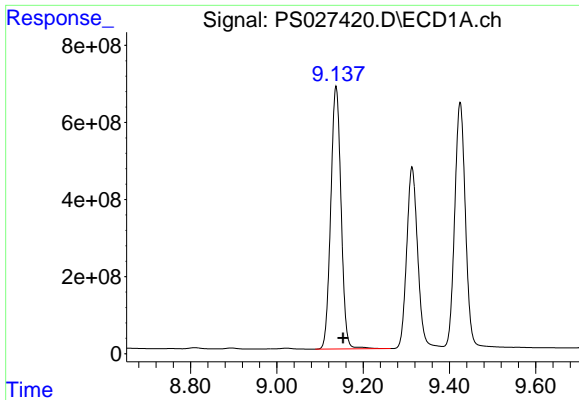
#10 Pentachlorophenol

R.T.: 8.566 min  
Delta R.T.: -0.014 min  
Response: 29627842011  
Conc: 749.52 ng/ml



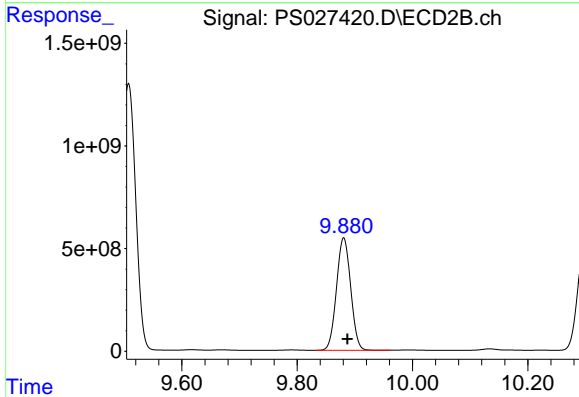
#10 Pentachlorophenol

R.T.: 9.508 min  
Delta R.T.: -0.006 min  
Response: 23321194710  
Conc: 732.74 ng/ml

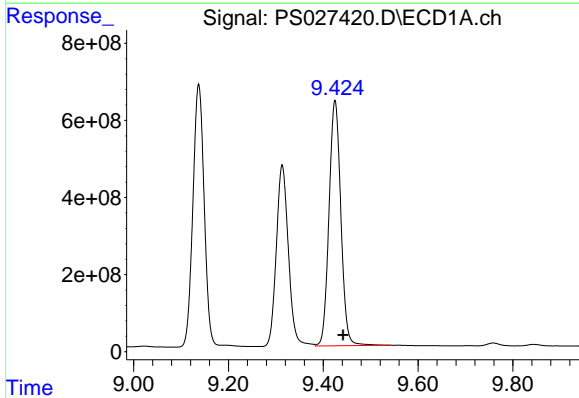


#11 2,4,5-TP (SILVEX)  
 R.T.: 9.137 min  
 Delta R.T.: -0.016 min  
 Response: 11294278564  
 Conc: 744.68 ng/ml

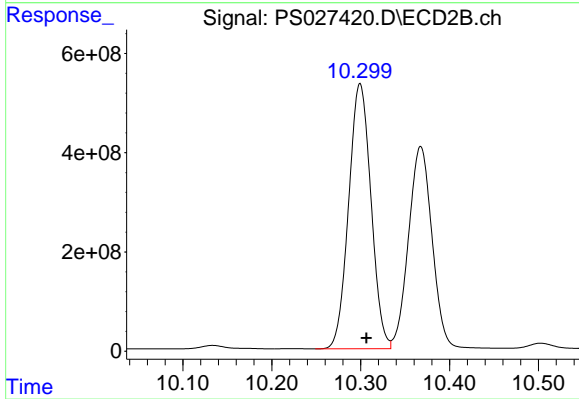
Instrument :  
 ECD\_S  
 ClientSampleId :  
 HSTDCCC750



#11 2,4,5-TP (SILVEX)  
 R.T.: 9.881 min  
 Delta R.T.: -0.006 min  
 Response: 9297979920  
 Conc: 728.05 ng/ml

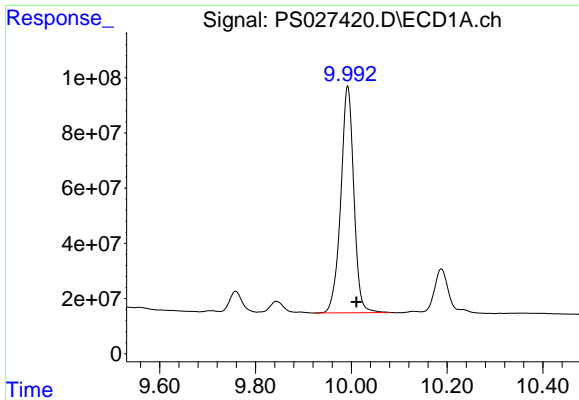


#12 2,4,5-T  
 R.T.: 9.425 min  
 Delta R.T.: -0.017 min  
 Response: 11013420723  
 Conc: 754.05 ng/ml



#12 2,4,5-T  
 R.T.: 10.299 min  
 Delta R.T.: -0.007 min  
 Response: 9324004025  
 Conc: 739.46 ng/ml

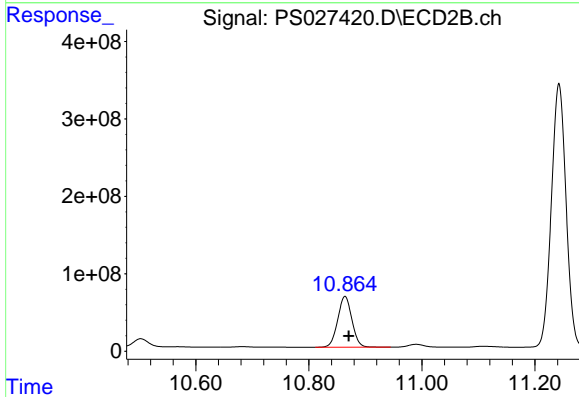




#13 2,4-DB

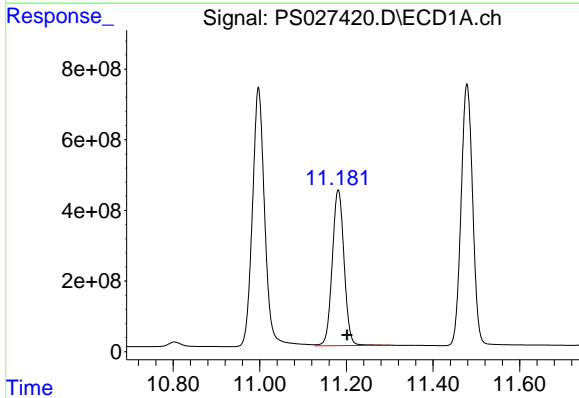
R.T.: 9.992 min  
 Delta R.T.: -0.018 min  
 Response: 1556023717  
 Conc: 758.72 ng/ml

Instrument :  
 ECD\_S  
 ClientSampleId :  
 HSTDCCC750



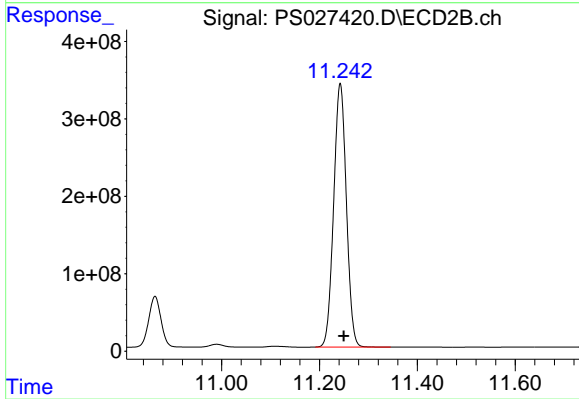
#13 2,4-DB

R.T.: 10.864 min  
 Delta R.T.: -0.007 min  
 Response: 1142311568  
 Conc: 722.64 ng/ml



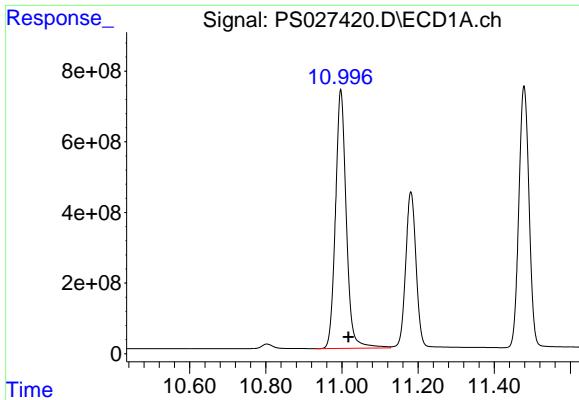
#14 DINOSEB

R.T.: 11.181 min  
 Delta R.T.: -0.021 min  
 Response: 8378436666  
 Conc: 751.75 ng/ml



#14 DINOSEB

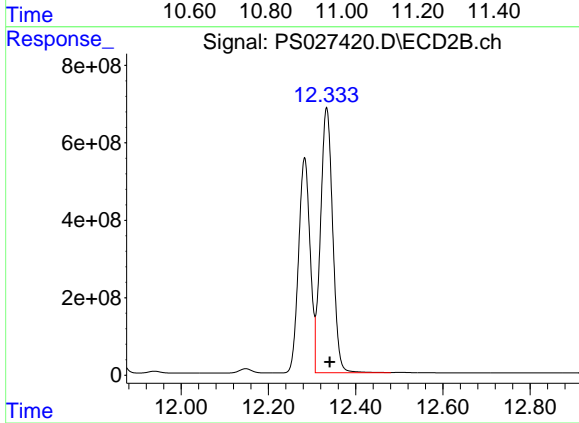
R.T.: 11.243 min  
 Delta R.T.: -0.007 min  
 Response: 6121649029  
 Conc: 718.74 ng/ml



#15 Picloram

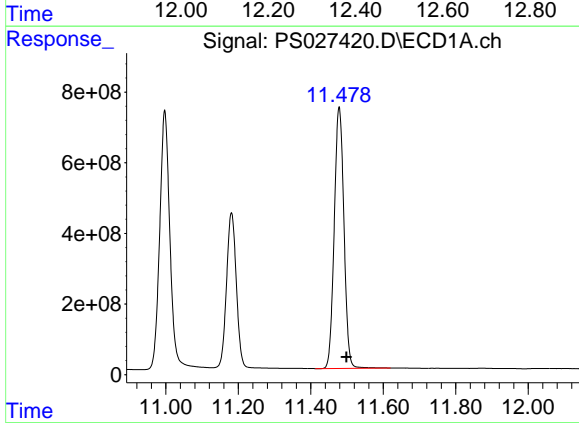
R.T.: 10.997 min  
 Delta R.T.: -0.020 min  
 Response: 14456406657  
 Conc: 749.80 ng/ml

Instrument :  
 ECD\_S  
 ClientSampleId :  
 HSTDCCC750



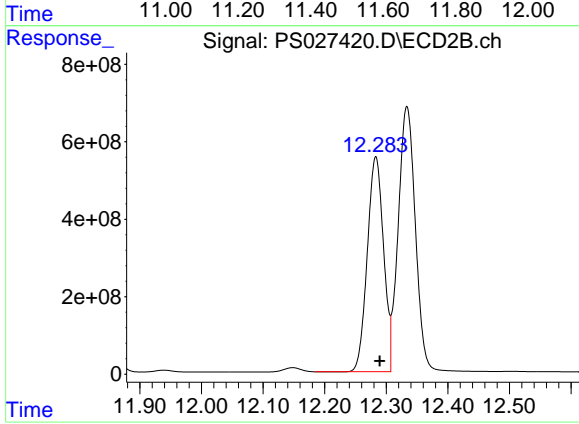
#15 Picloram

R.T.: 12.334 min  
 Delta R.T.: -0.007 min  
 Response: 13281016072  
 Conc: 736.15 ng/ml



#16 DCPA

R.T.: 11.478 min  
 Delta R.T.: -0.020 min  
 Response: 13703414171  
 Conc: 758.57 ng/ml



#16 DCPA

R.T.: 12.283 min  
 Delta R.T.: -0.006 min  
 Response: 10168071995  
 Conc: 731.18 ng/ml