

Data Path : Z:\pestpcbsrv\HPCHEM1\ECD_S\Data\PS081419\
 Data File : PS006061.D
 Signal(s) : Signal #1: ECD1A.ch Signal #2: ECD2B.ch
 Acq On : 14 Aug 2019 16:48
 Operator : SM\AJ
 Sample : SOIL IDOC 03
 Misc : FOR DHAVAL DAVE
 ALS Vial : 7 Sample Multiplier: 1

Instrument :
 ECD_S
ClientSampleId :
 SOIL IDOC 03

Manual Integrations
APPROVED
 Ankita
 8/16/2019 2:40:52 PM

Integration File signal 1: autoint1.e
 Integration File signal 2: autoint2.e
 Quant Time: Aug 15 08:23:14 2019
 Quant Method : Z:\pestpcbsrv\HPCHEM1\ECD_S\Method\PS081419.M
 Quant Title : 8080.M
 QLast Update : Wed Aug 14 15:09:52 2019
 Response via : Initial Calibration
 Integrator: ChemStation

Volume Inj. : 2 µl
 Signal #1 Phase : Rtx-CLPesticides Signal #2 Phase: Rtx-CLPesticides2
 Signal #1 Info : 30M x 0.32mm x0.5 Signal #2 Info : 30M x 0.32mm x 0.25µm

	Compound	RT#1	RT#2	Resp#1	Resp#2	ng/ml	ng/ml

System Monitoring Compounds							
4) S	2,4-DCAA	5.490	5.218	428.4E6	222.1E6	496.249	451.618
Target Compounds							
1) T	Dalapon	2.052	1.761	448.9E6	251.5E6	411.942	400.808
2) T	3,5-DICHL...	4.856	4.521	463.8E6	266.9E6	430.177	440.595
3) T	4-Nitroph...	5.348	4.904	161.0E6	102.6E6	428.817	414.038
5) T	DICAMBA	5.641	5.346	1452.8E6	804.5E6	452.345	436.156
6) T	MCP P	5.790	5.428	116.5E6	51849714	51.769m	41.912
7) T	MCPA	5.923	5.606	133.0E6	90668006	42.123	44.364
8) T	DICHLORPROP	6.271	5.888	338.9E6	194.0E6	446.859	436.297
9) T	2,4-D	6.490	6.160	354.6E6	237.6E6	435.165	432.277
10) T	Pentachlo...	6.746	6.525	5471.0E6	3113.9E6	462.827	460.641
11) T	2,4,5-TP ...	7.282	6.889	2058.5E6	1160.4E6	451.248	445.943
12) T	2,4,5-T	7.557	7.249	2253.3E6	1094.2E6	455.721	440.128
13) T	2,4-DB	8.088	7.735	264.8E6	144.2E6	425.125	433.216
14) T	DINOSEB	9.174	8.044	1662.6E6	843.9E6	454.160	439.353
15) T	Picloram	9.009	8.983	3211.8E6	1952.0E6	431.655	432.723
16) T	DCPA	9.446	8.941	2672.1E6	1593.4E6	461.066	456.924

(f)=RT Delta > 1/2 Window (#)=Amounts differ by > 25% (m)=manual int.

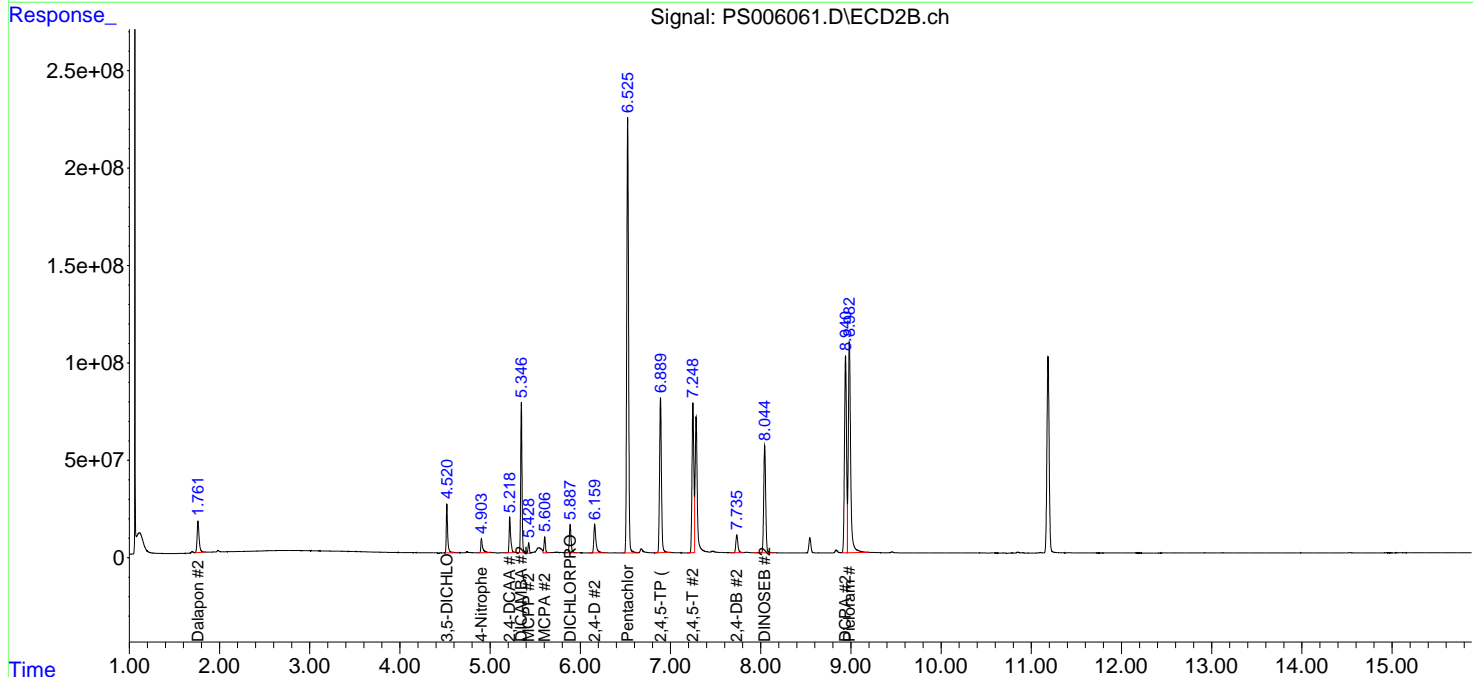
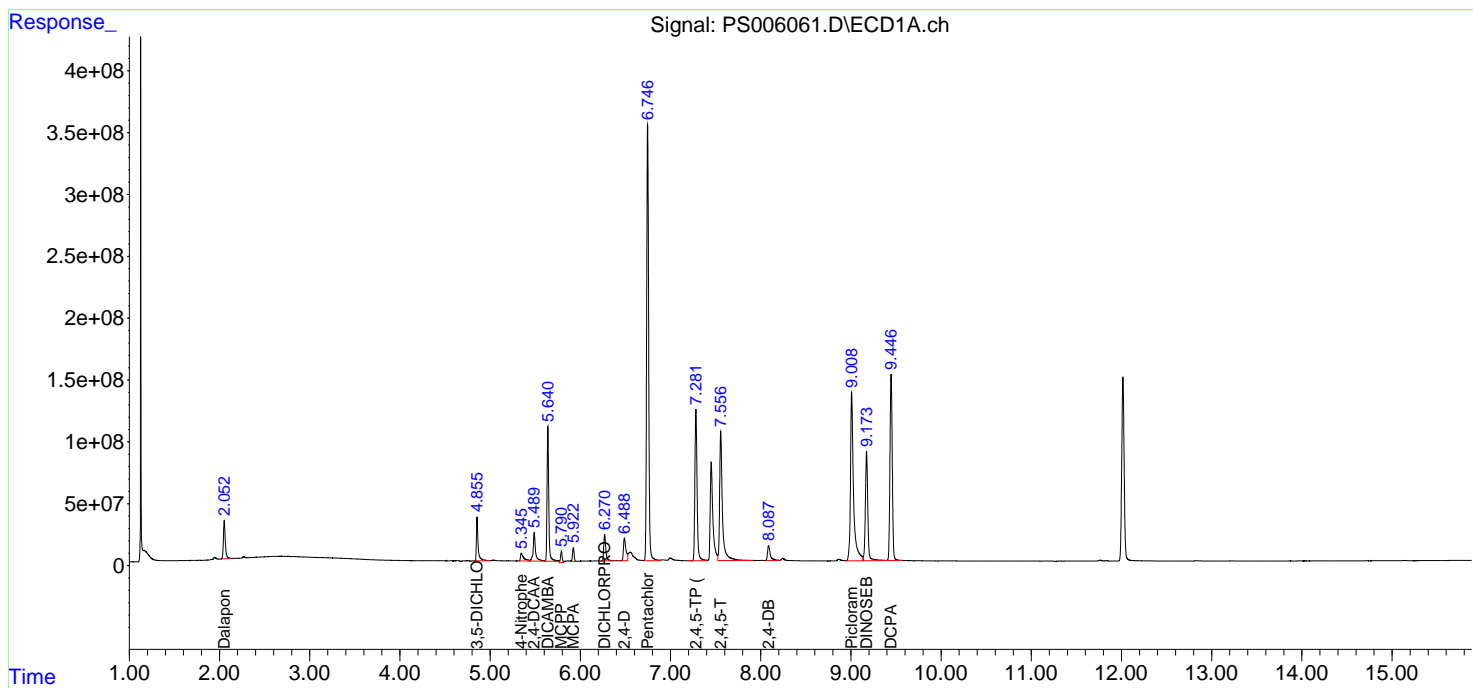
Data Path : Z:\pestpcbsrv\HPCHEM1\ECD_S\Data\PS081419\
 Data File : PS006061.D
 Signal(s) : Signal #1: ECD1A.ch Signal #2: ECD2B.ch
 Acq On : 14 Aug 2019 16:48
 Operator : SM\AJ
 Sample : SOIL IDOC 03
 Misc : FOR DHAVAL DAVE
 ALS Vial : 7 Sample Multiplier: 1

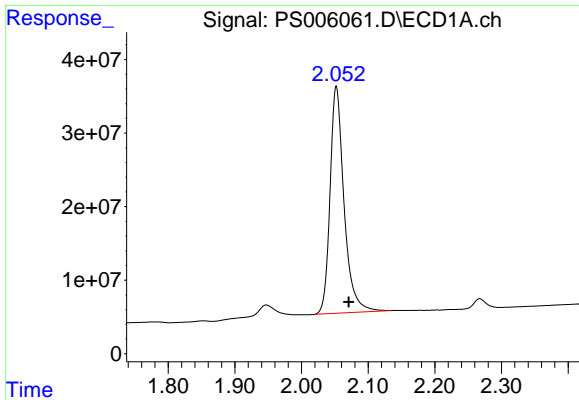
Instrument :
 ECD_S
Client Sampled :
 SOIL IDOC 03

Manual Integrations
APPROVED
 Ankita
 8/16/2019 2:40:52 PM

Integration File signal 1: autoint1.e
 Integration File signal 2: autoint2.e
 Quant Time: Aug 15 08:23:14 2019
 Quant Method : Z:\pestpcbsrv\HPCHEM1\ECD_S\Method\PS081419.M
 Quant Title : 8080.M
 QLast Update : Wed Aug 14 15:09:52 2019
 Response via : Initial Calibration
 Integrator: ChemStation

Volume Inj. : 2 µl
 Signal #1 Phase : Rtx-CLPesticides Signal #2 Phase: Rtx-CLPesticides2
 Signal #1 Info : 30M x 0.32mm x 0.5 Signal #2 Info : 30M x 0.32mm x 0.25µm





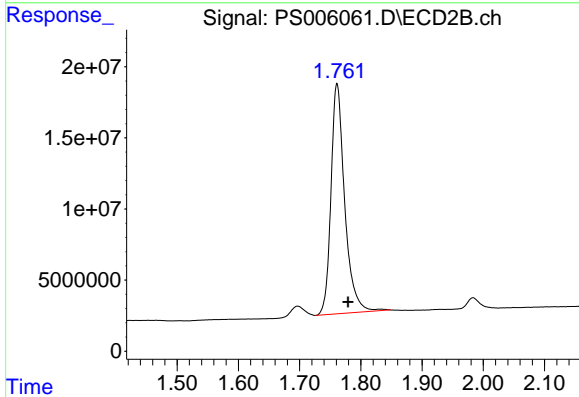
#1 Dalapon

R.T.: 2.052 min
 Delta R.T.: -0.019 min
 Response: 448862342
 Conc: 411.94 ng/ml

Instrument :
 ECD_S
 ClientSampled :
 SOIL IDOC 03

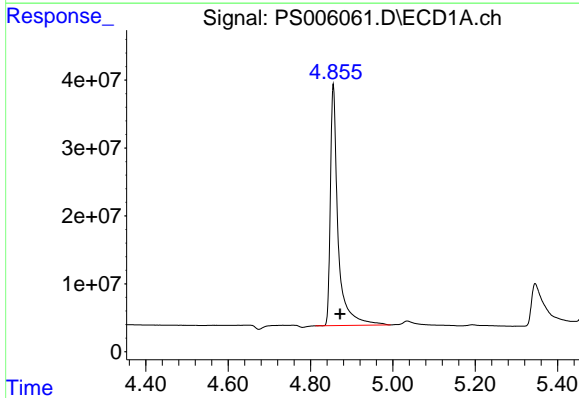
Manual Integrations
 APPROVED

Ankita
 8/16/2019 2:40:52 PM



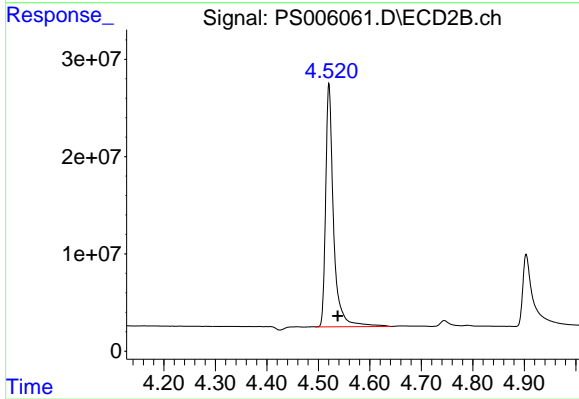
#1 Dalapon

R.T.: 1.761 min
 Delta R.T.: -0.018 min
 Response: 251504352
 Conc: 400.81 ng/ml



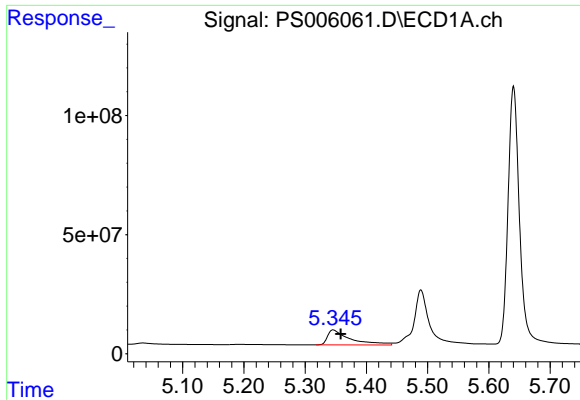
#2 3,5-DICHLOROBENZOIC ACID

R.T.: 4.856 min
 Delta R.T.: -0.016 min
 Response: 463787746
 Conc: 430.18 ng/ml



#2 3,5-DICHLOROBENZOIC ACID

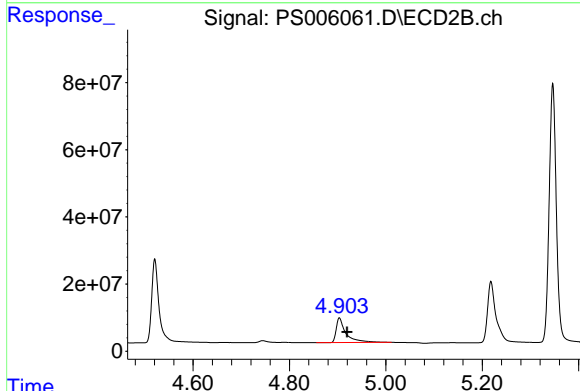
R.T.: 4.521 min
 Delta R.T.: -0.017 min
 Response: 266871246
 Conc: 440.59 ng/ml



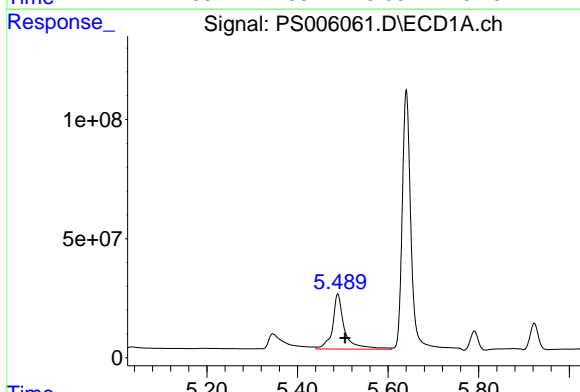
#3 4-Nitrophenol
 R.T.: 5.348 min
 Delta R.T.: -0.010 min
 Response: 160985004
 Conc: 428.82 ng/ml

Instrument :
 ECD_S
 ClientSampled :
 SOIL IDOC 03

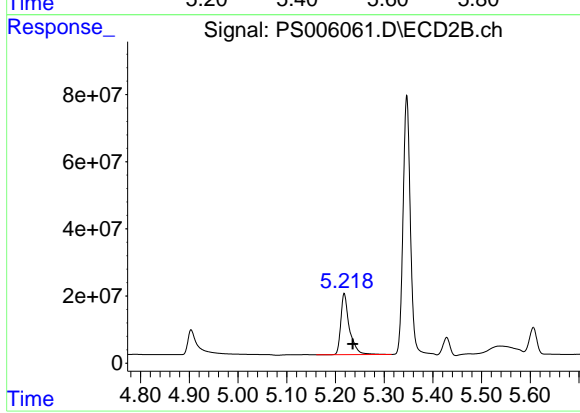
Manual Integrations
 APPROVED
 Ankita
 8/16/2019 2:40:52 PM



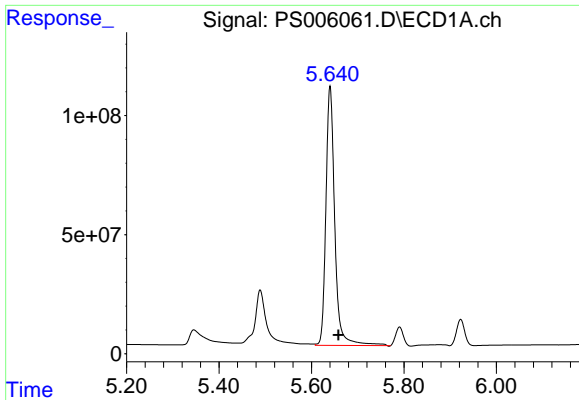
#3 4-Nitrophenol
 R.T.: 4.904 min
 Delta R.T.: -0.016 min
 Response: 102567546
 Conc: 414.04 ng/ml



#4 2,4-DCAA
 R.T.: 5.490 min
 Delta R.T.: -0.016 min
 Response: 428362669
 Conc: 496.25 ng/ml



#4 2,4-DCAA
 R.T.: 5.218 min
 Delta R.T.: -0.017 min
 Response: 222129360
 Conc: 451.62 ng/ml



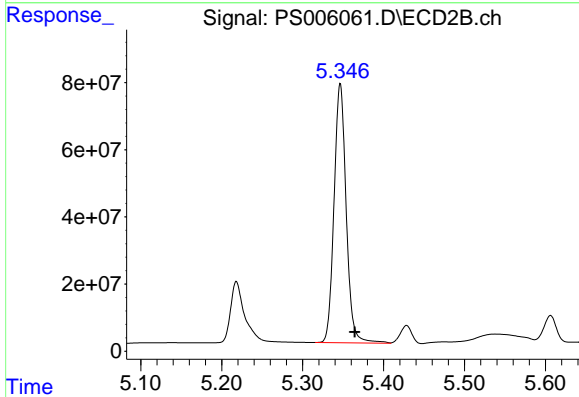
#5 DICAMBA

R.T.: 5.641 min
 Delta R.T.: -0.018 min
 Response: 1452776478
 Conc: 452.34 ng/ml

Instrument :
 ECD_S
 ClientSampled :
 SOIL IDOC 03

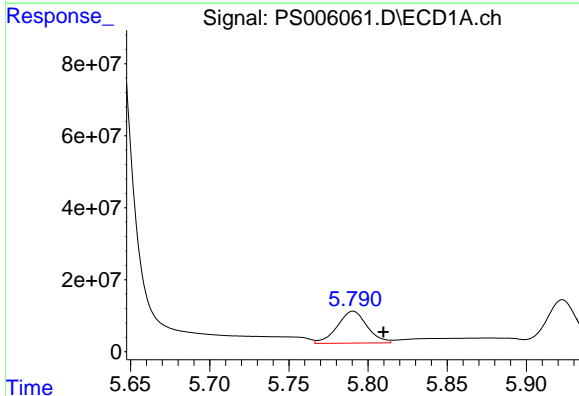
Manual Integrations
 APPROVED

Ankita
 8/16/2019 2:40:52 PM



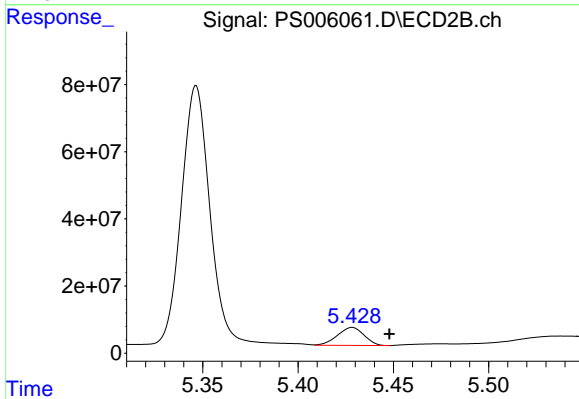
#5 DICAMBA

R.T.: 5.346 min
 Delta R.T.: -0.018 min
 Response: 804491509
 Conc: 436.16 ng/ml



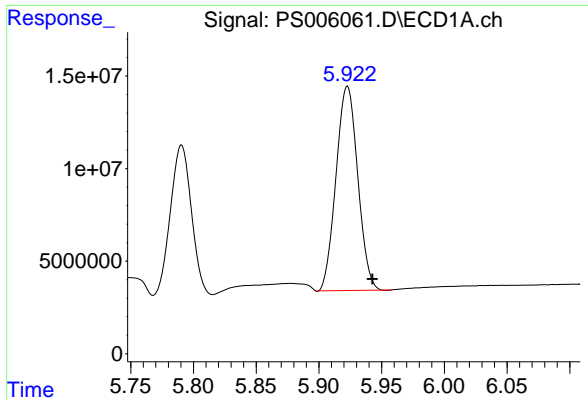
#6 MCP

R.T.: 5.790 min
 Delta R.T.: -0.019 min
 Response: 116502216
 Conc: 51.77 ug/ml m



#6 MCP

R.T.: 5.428 min
 Delta R.T.: -0.020 min
 Response: 51849714
 Conc: 41.91 ug/ml



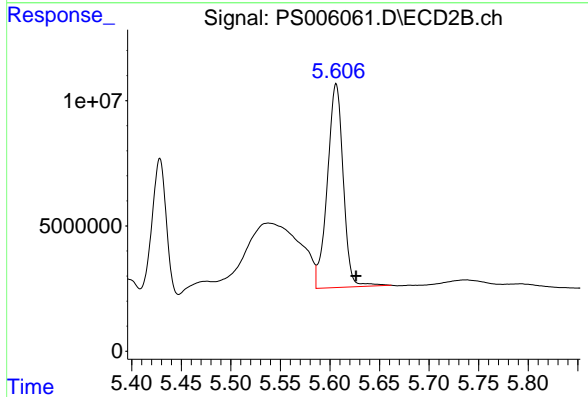
#7 MCPA

R.T.: 5.923 min
 Delta R.T.: -0.020 min
 Response: 132985882
 Conc: 42.12 ug/ml

Instrument :
 ECD_S
 ClientSampled :
 SOIL IDOC 03

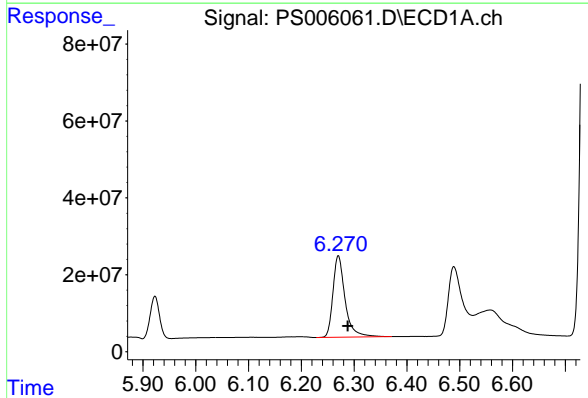
Manual Integrations
 APPROVED

Ankita
 8/16/2019 2:40:52 PM



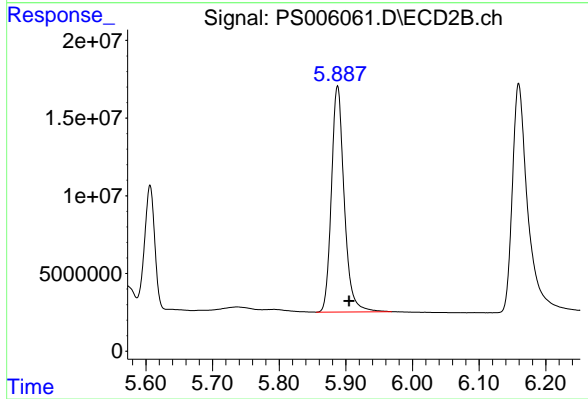
#7 MCPA

R.T.: 5.606 min
 Delta R.T.: -0.020 min
 Response: 90668006
 Conc: 44.36 ug/ml



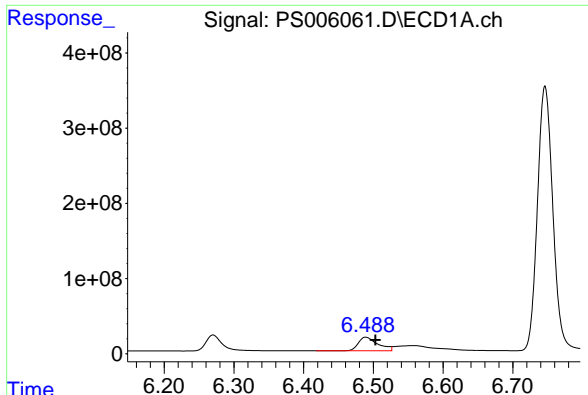
#8 DICHLORPROP

R.T.: 6.271 min
 Delta R.T.: -0.017 min
 Response: 338886225
 Conc: 446.86 ng/ml



#8 DICHLORPROP

R.T.: 5.888 min
 Delta R.T.: -0.017 min
 Response: 193979592
 Conc: 436.30 ng/ml



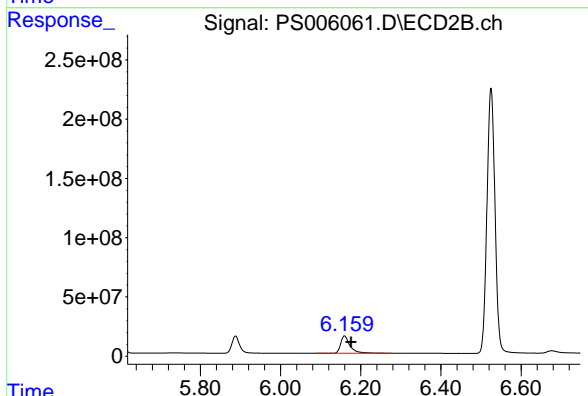
#9 2,4-D

R.T.: 6.490 min
 Delta R.T.: -0.013 min
 Response: 354566005
 Conc: 435.17 ng/ml

Instrument :
 ECD_S
 ClientSampleId :
 SOIL IDOC 03

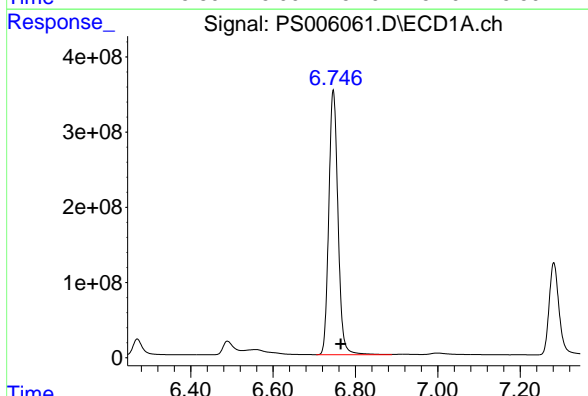
Manual Integrations
 APPROVED

Ankita
 8/16/2019 2:40:52 PM



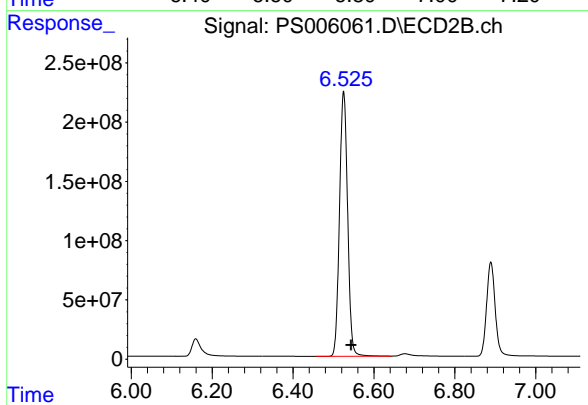
#9 2,4-D

R.T.: 6.160 min
 Delta R.T.: -0.016 min
 Response: 237628647
 Conc: 432.28 ng/ml



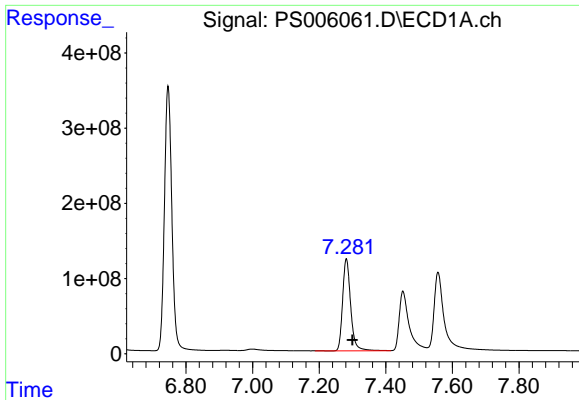
#10 Pentachlorophenol

R.T.: 6.746 min
 Delta R.T.: -0.018 min
 Response: 5471021772
 Conc: 462.83 ng/ml



#10 Pentachlorophenol

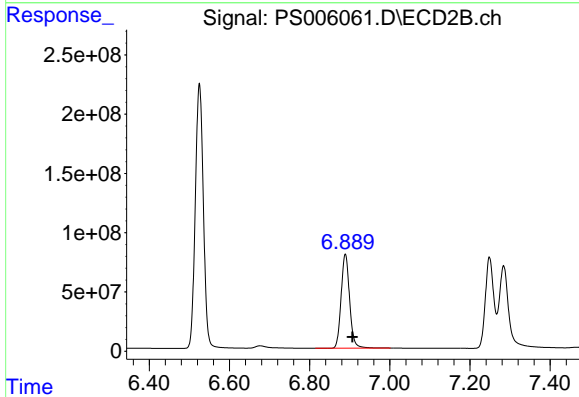
R.T.: 6.525 min
 Delta R.T.: -0.019 min
 Response: 3113902738
 Conc: 460.64 ng/ml



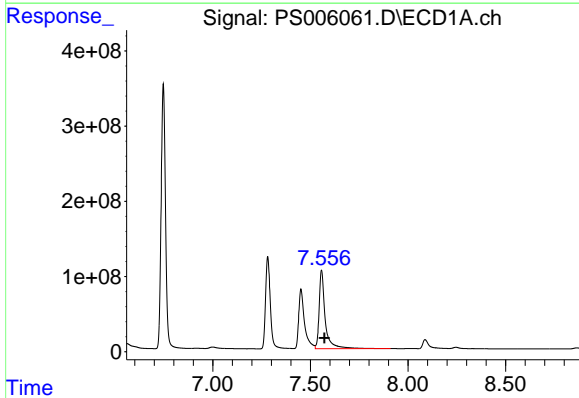
#11 2,4,5-TP (SILVEX)
 R.T.: 7.282 min
 Delta R.T.: -0.017 min
 Response: 2058496946
 Conc: 451.25 ng/ml

Instrument :
 ECD_S
 ClientSampled :
 SOIL IDOC 03

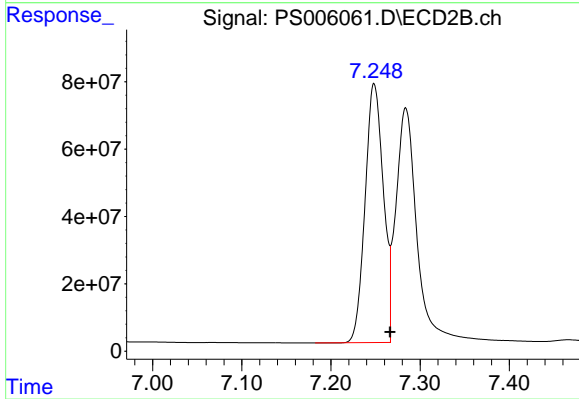
Manual Integrations
 APPROVED
 Ankita
 8/16/2019 2:40:52 PM



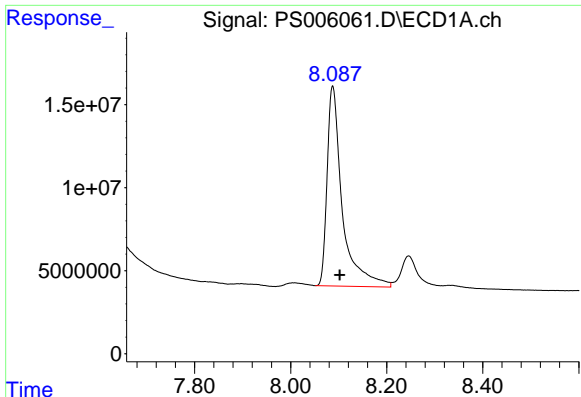
#11 2,4,5-TP (SILVEX)
 R.T.: 6.889 min
 Delta R.T.: -0.018 min
 Response: 1160386932
 Conc: 445.94 ng/ml



#12 2,4,5-T
 R.T.: 7.557 min
 Delta R.T.: -0.015 min
 Response: 2253348234
 Conc: 455.72 ng/ml



#12 2,4,5-T
 R.T.: 7.249 min
 Delta R.T.: -0.017 min
 Response: 1094180107
 Conc: 440.13 ng/ml



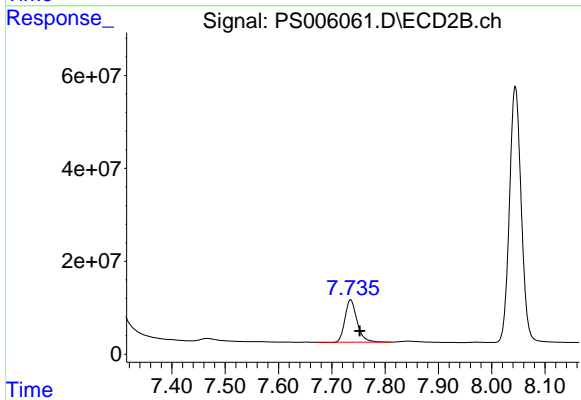
#13 2,4-DB

R.T.: 8.088 min
 Delta R.T.: -0.014 min
 Response: 264761590
 Conc: 425.12 ng/ml

Instrument :
 ECD_S
 ClientSampled :
 SOIL IDOC 03

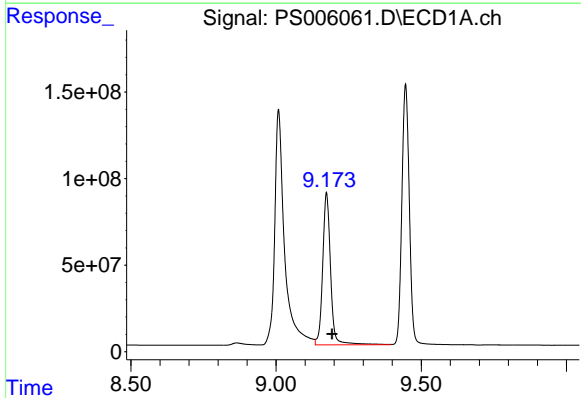
Manual Integrations
 APPROVED

Ankita
 8/16/2019 2:40:52 PM



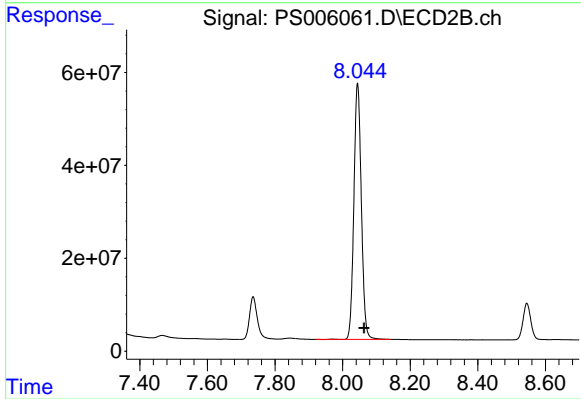
#13 2,4-DB

R.T.: 7.735 min
 Delta R.T.: -0.017 min
 Response: 144175627
 Conc: 433.22 ng/ml



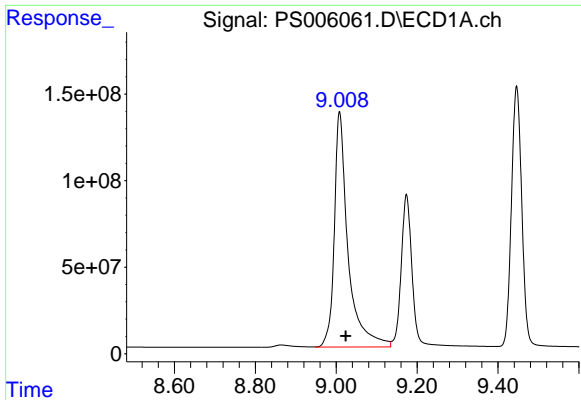
#14 DINOSEB

R.T.: 9.174 min
 Delta R.T.: -0.018 min
 Response: 1662586394
 Conc: 454.16 ng/ml



#14 DINOSEB

R.T.: 8.044 min
 Delta R.T.: -0.019 min
 Response: 843920841
 Conc: 439.35 ng/ml



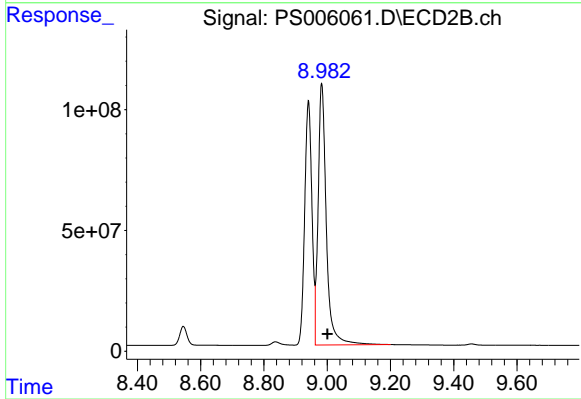
#15 Picloram

R.T.: 9.009 min
 Delta R.T.: -0.015 min
 Response: 321177796
 Conc: 431.65 ng/ml

Instrument :
 ECD_S
 ClientSampleId :
 SOIL IDOC 03

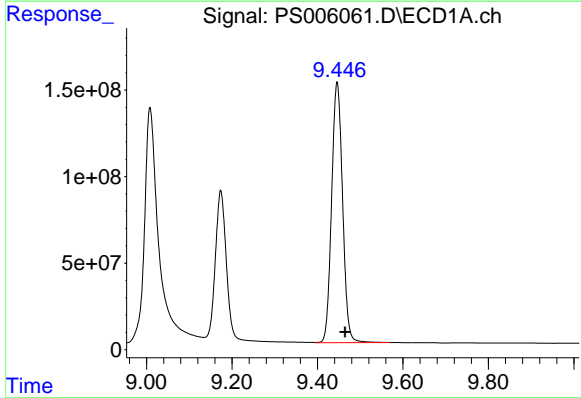
Manual Integrations
 APPROVED

Ankita
 8/16/2019 2:40:52 PM



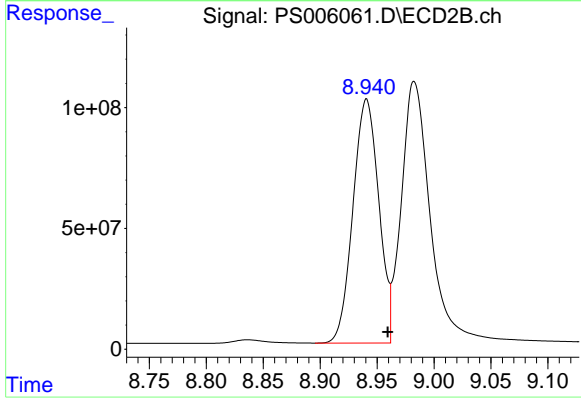
#15 Picloram

R.T.: 8.983 min
 Delta R.T.: -0.017 min
 Response: 1951951469
 Conc: 432.72 ng/ml



#16 DCPA

R.T.: 9.446 min
 Delta R.T.: -0.019 min
 Response: 2672134745
 Conc: 461.07 ng/ml



#16 DCPA

R.T.: 8.941 min
 Delta R.T.: -0.019 min
 Response: 1593363095
 Conc: 456.92 ng/ml