

Data Path : Z:\pestpcbsrv\HPCHEM1\ECD_S\Data\PS081424\
 Data File : PS027441.D
 Signal(s) : Signal #1: ECD1A.ch Signal #2: ECD2B.ch
 Acq On : 14 Aug 2024 17:02
 Operator : AR\AJ
 Sample : I.BLK
 Misc :
 ALS Vial : 2 Sample Multiplier: 1

Instrument :
 ECD_S
 ClientSampleId :
 I.BLK

Integration File signal 1: autoint1.e
 Integration File signal 2: autoint2.e
 Quant Time: Aug 15 01:23:45 2024
 Quant Method : Z:\pestpcbsrv\HPCHEM1\ECD_S\Method\PS080524.M
 Quant Title : 8080.M
 QLast Update : Tue Aug 06 08:10:22 2024
 Response via : Initial Calibration
 Integrator: ChemStation

Volume Inj. : 1 µl
 Signal #1 Phase : ZB-MR1 Signal #2 Phase: ZB-MR2
 Signal #1 Info : 30M x 0.32mm x0.5 Signal #2 Info : 30M x 0.32mm x 0.25µm

Compound	RT#1	RT#2	Resp#1	Resp#2	ng/ml	ng/ml

System Monitoring Compounds						
4) S 2,4-DCAA	7.172	7.736	1437.2E6	1057.3E6	571.423	568.534
Target Compounds						
1) T Dalapon	2.607	2.658f	20900188	56686116	6.395	16.989 #
2) T 3,5-DICHL...	6.332f	6.737f	4762.0E6	519832	1195.965	<MDL #
3) T 4-Nitroph...	6.962	7.315f	28387129	362558	18.777	<MDL #
5) T DICAMBA	0.000	7.898f	0	240.2E6	N.D.	27.892
6) T MCPP	7.585f	8.037	53443788	3407.8E6	7.023	598.440 #
7) T MCPA	7.707	0.000	2658777	0	<MDL	N.D. #
8) T DICHLORPROP	8.078	8.639	212.6E6	701399	80.363	<MDL #
9) T 2,4-D	8.287	8.975	9206.2E6	946454	3228.962	<MDL #
10) T Pentachlo...	8.573	9.500	10540764	2231706	<MDL	<MDL #
11) T 2,4,5-TP ...	9.124f	9.895	26993559	5504983	1.780	<MDL #
12) T 2,4,5-T	0.000	10.302	0	8081221	N.D.	<MDL
13) T 2,4-DB	0.000	10.898f	0	11371711	N.D.	7.194
15) T Picloram	10.974f	12.332	615.1E6	115.3E6	31.902	6.389 #
16) T DCPA	11.472f	12.332f	15906352	115.3E6	<MDL	8.289 #

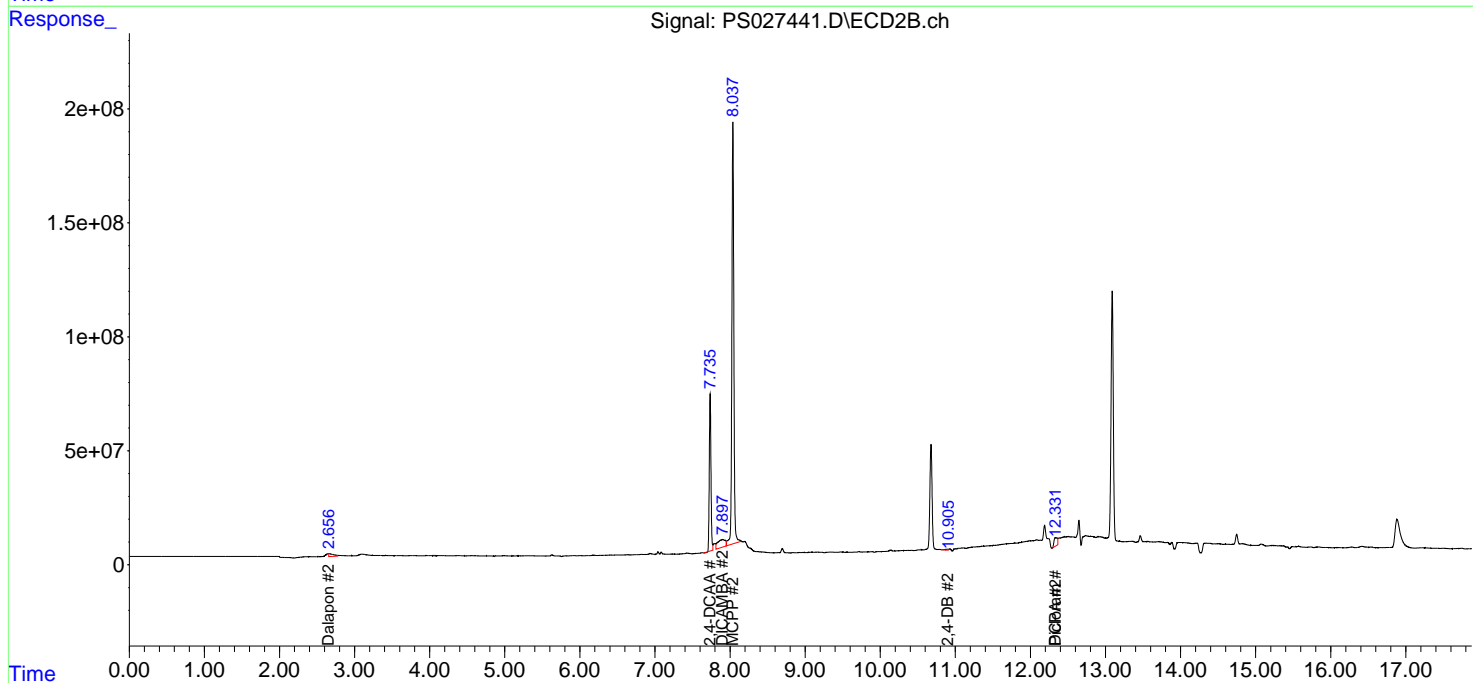
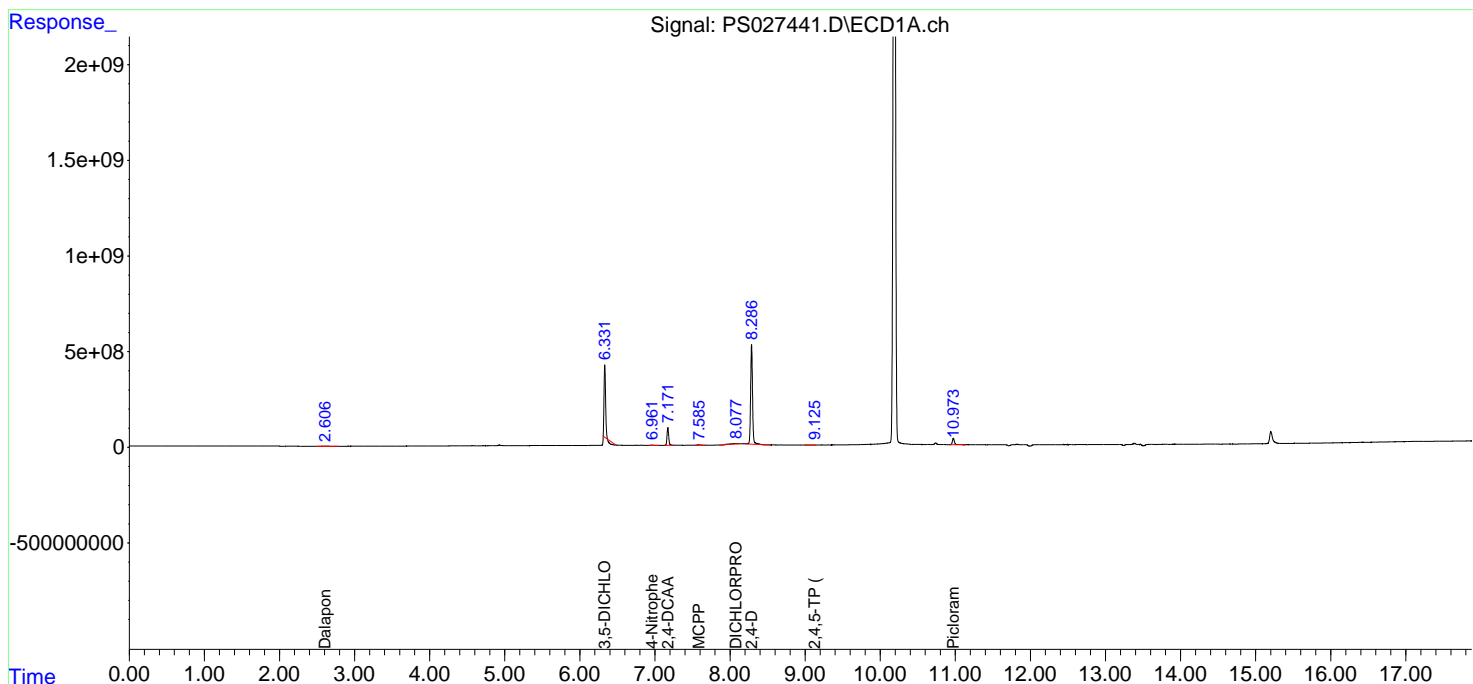
(f)=RT Delta > 1/2 Window (#)=Amounts differ by > 25% (m)=manual int.

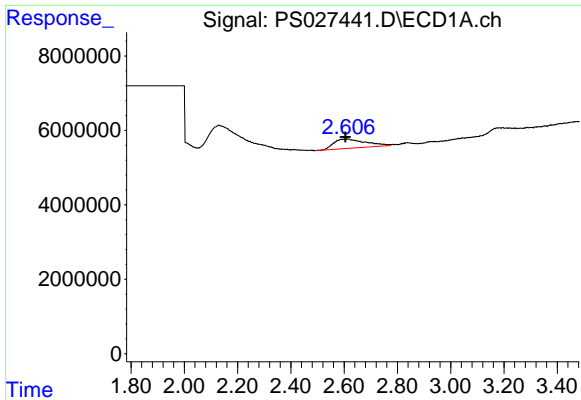
Data Path : Z:\pestpcbsrv\HPCHEM1\ECD_S\Data\PS081424\
 Data File : PS027441.D
 Signal(s) : Signal #1: ECD1A.ch Signal #2: ECD2B.ch
 Acq On : 14 Aug 2024 17:02
 Operator : AR\AJ
 Sample : I.BLK
 Misc :
 ALS Vial : 2 Sample Multiplier: 1

Instrument :
 ECD_S
 ClientSampleId :
 I.BLK

Integration File signal 1: autoint1.e
 Integration File signal 2: autoint2.e
 Quant Time: Aug 15 01:23:45 2024
 Quant Method : Z:\pestpcbsrv\HPCHEM1\ECD_S\Method\PS080524.M
 Quant Title : 8080.M
 QLast Update : Tue Aug 06 08:10:22 2024
 Response via : Initial Calibration
 Integrator: ChemStation

Volume Inj. : 1 µl
 Signal #1 Phase : ZB-MR1 Signal #2 Phase: ZB-MR2
 Signal #1 Info : 30M x 0.32mm x0.5 Signal #2 Info : 30M x 0.32mm x 0.25µm

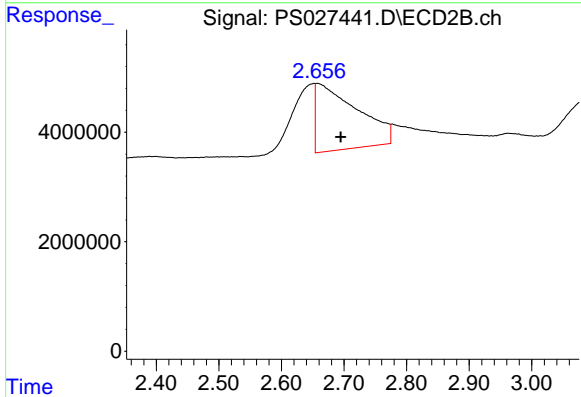




#1 Dalapon

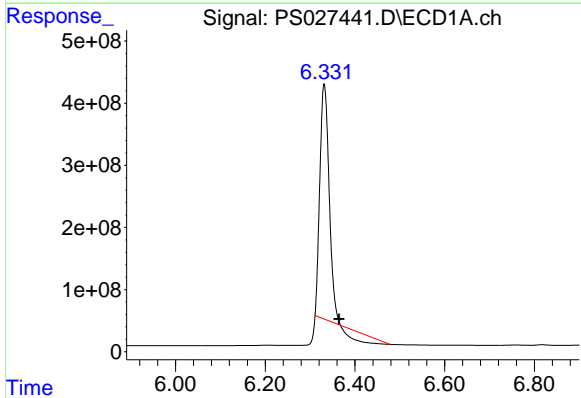
R.T.: 2.607 min
 Delta R.T.: 0.002 min
 Response: 20900188
 Conc: 6.40 ng/ml

Instrument :
 ECD_S
 ClientSampleId :
 I.BLK



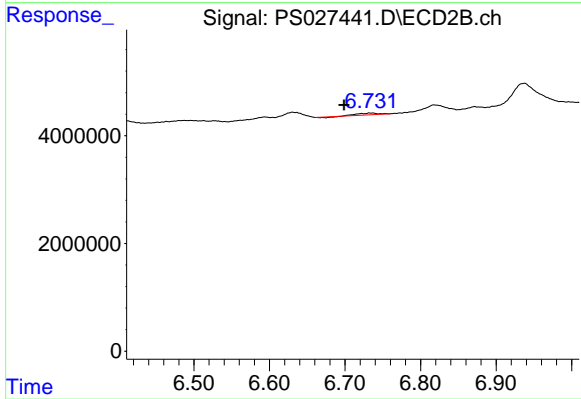
#1 Dalapon

R.T.: 2.658 min
 Delta R.T.: -0.037 min
 Response: 56686116
 Conc: 16.99 ng/ml



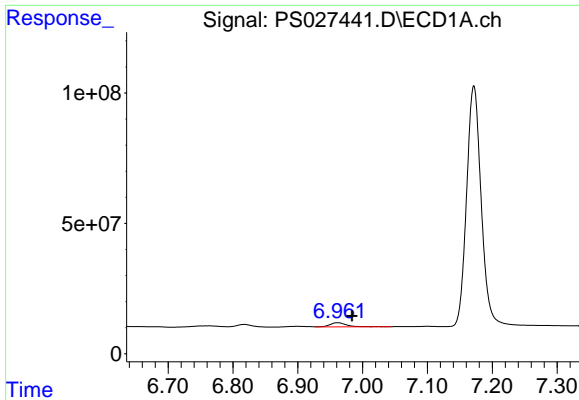
#2 3,5-DICHLOROBENZOIC ACID

R.T.: 6.332 min
 Delta R.T.: -0.033 min
 Response: 4762006270
 Conc: 1195.96 ng/ml



#2 3,5-DICHLOROBENZOIC ACID

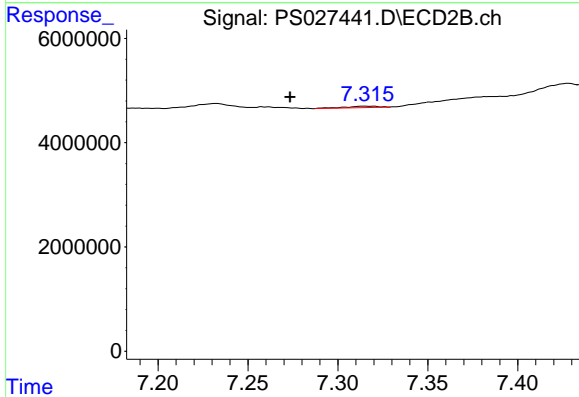
R.T.: 6.737 min
 Delta R.T.: 0.038 min
 Response: 519832
 Conc: N.D.



#3 4-Nitrophenol

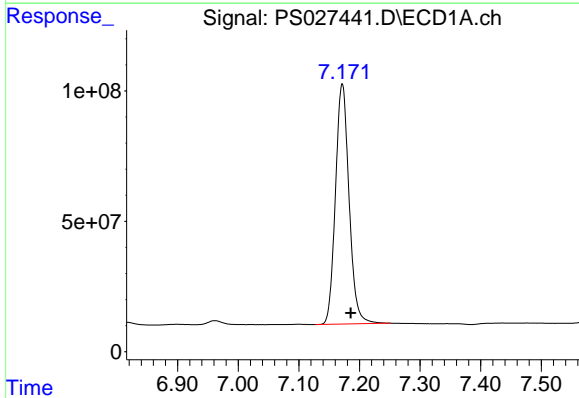
R.T.: 6.962 min
 Delta R.T.: -0.022 min
 Response: 28387129
 Conc: 18.78 ng/ml

Instrument :
 ECD_S
 ClientSampleId :
 I.BLK



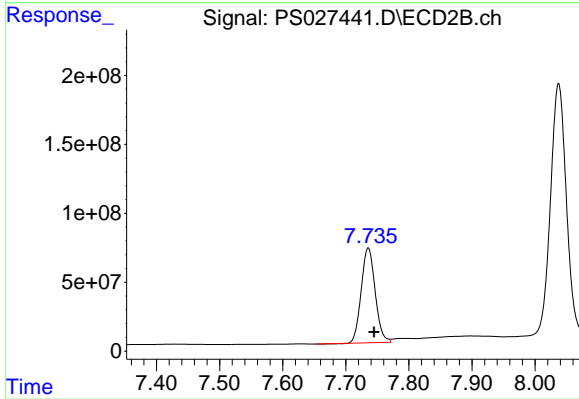
#3 4-Nitrophenol

R.T.: 7.315 min
 Delta R.T.: 0.041 min
 Response: 362558
 Conc: N.D.



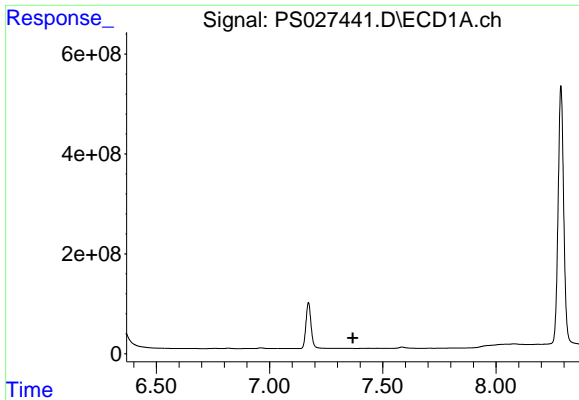
#4 2,4-DCAA

R.T.: 7.172 min
 Delta R.T.: -0.014 min
 Response: 1437197431
 Conc: 571.42 ng/ml



#4 2,4-DCAA

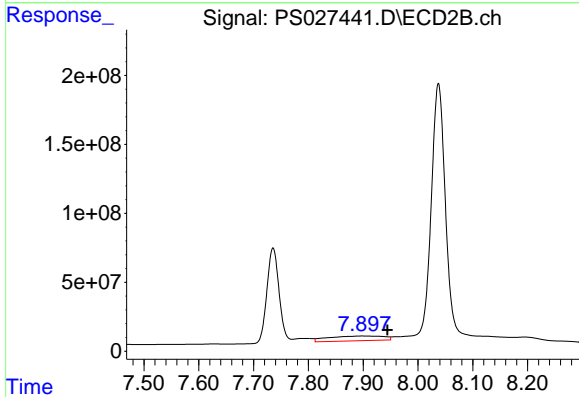
R.T.: 7.736 min
 Delta R.T.: -0.009 min
 Response: 1057342704
 Conc: 568.53 ng/ml



#5 DICAMBA

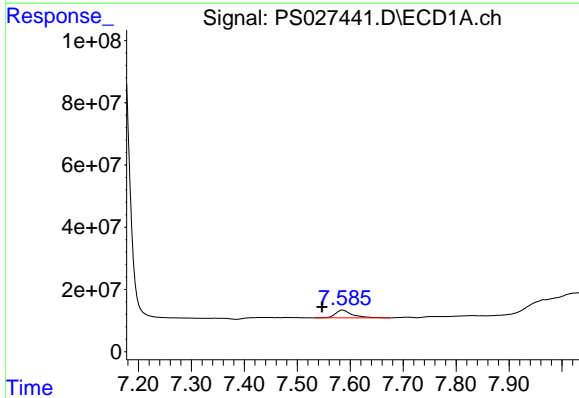
R.T.: 0.000 min
 Exp R.T.: 7.368 min
 Response: 0
 Conc: N.D.

Instrument :
 ECD_S
 ClientSampleId :
 I.BLK



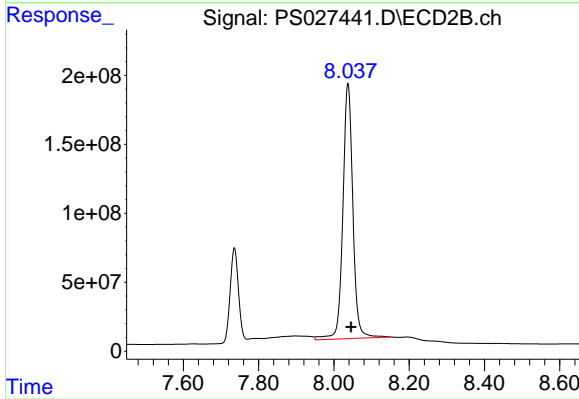
#5 DICAMBA

R.T.: 7.898 min
 Delta R.T.: -0.046 min
 Response: 240248168
 Conc: 27.89 ng/ml



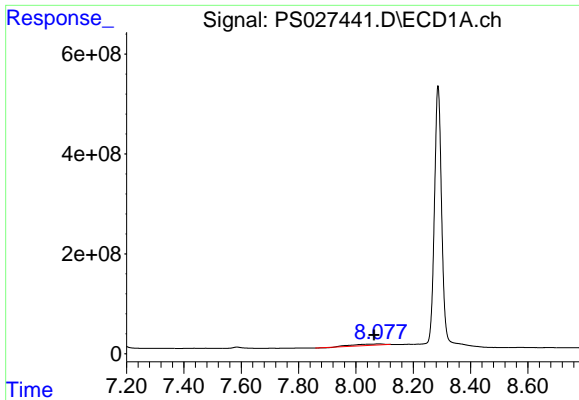
#6 MCPP

R.T.: 7.585 min
 Delta R.T.: 0.038 min
 Response: 53443788
 Conc: 7.02 ug/ml



#6 MCPP

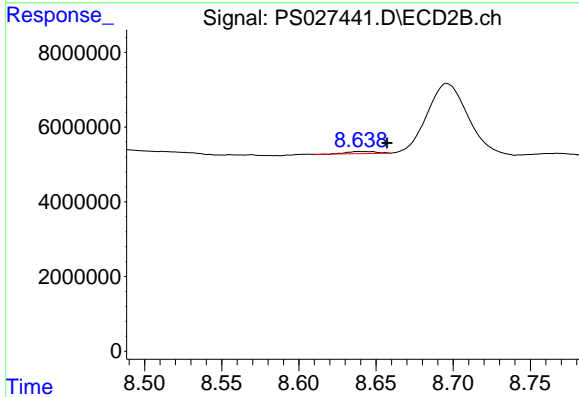
R.T.: 8.037 min
 Delta R.T.: -0.008 min
 Response: 3407775126
 Conc: 598.44 ug/ml



#8 DICHLORPROP

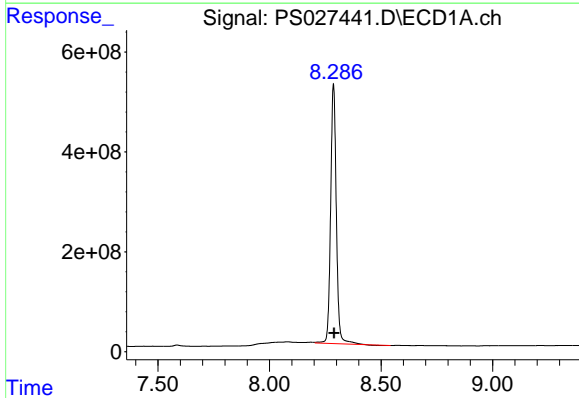
R.T.: 8.078 min
 Delta R.T.: 0.015 min
 Response: 212630981
 Conc: 80.36 ng/ml

Instrument :
 ECD_S
 ClientSampleId :
 I.BLK



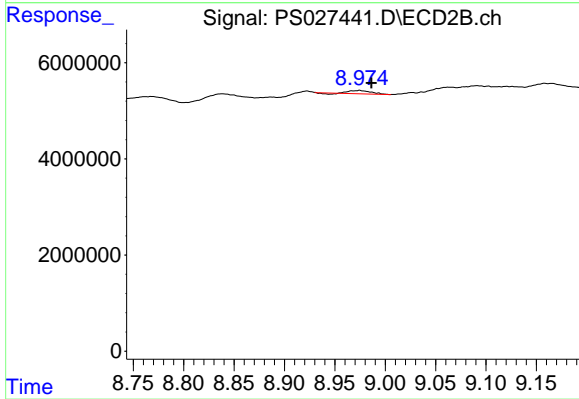
#8 DICHLORPROP

R.T.: 8.639 min
 Delta R.T.: -0.018 min
 Response: 701399
 Conc: N.D.



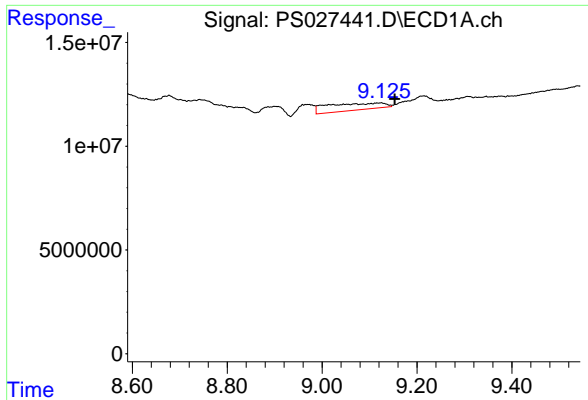
#9 2,4-D

R.T.: 8.287 min
 Delta R.T.: -0.002 min
 Response: 9206187790
 Conc: 3228.96 ng/ml



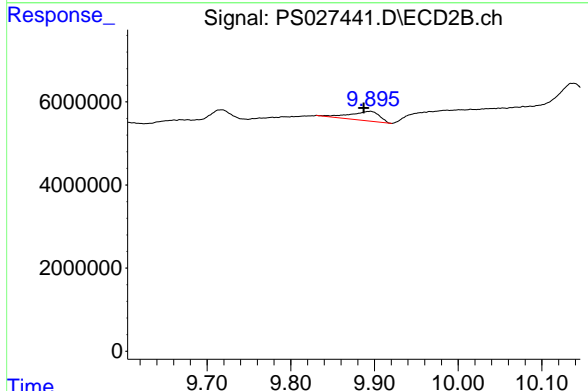
#9 2,4-D

R.T.: 8.975 min
 Delta R.T.: -0.012 min
 Response: 946454
 Conc: N.D.

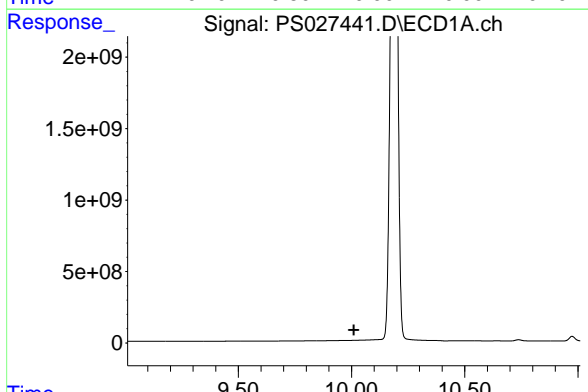


#11 2,4,5-TP (SILVEX)
 R.T.: 9.124 min
 Delta R.T.: -0.030 min
 Response: 26993559
 Conc: 1.78 ng/ml

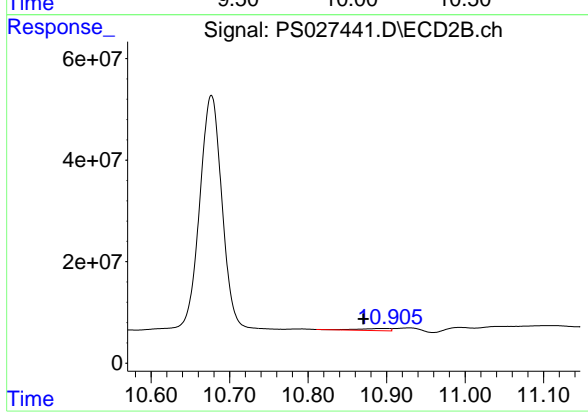
Instrument :
 ECD_S
 ClientSampleId :
 I.BLK



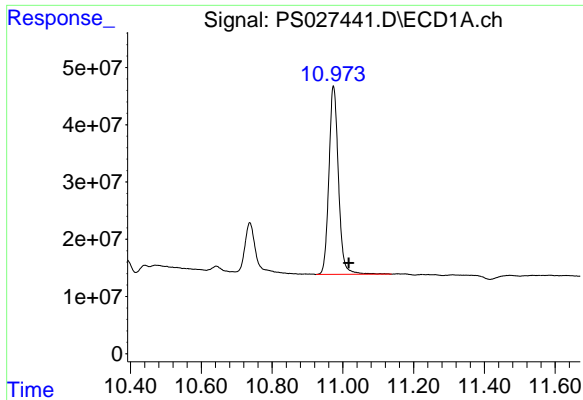
#11 2,4,5-TP (SILVEX)
 R.T.: 9.895 min
 Delta R.T.: 0.008 min
 Response: 5504983
 Conc: N.D.



#13 2,4-DB
 R.T.: 0.000 min
 Exp R.T. : 10.011 min
 Response: 0
 Conc: N.D.



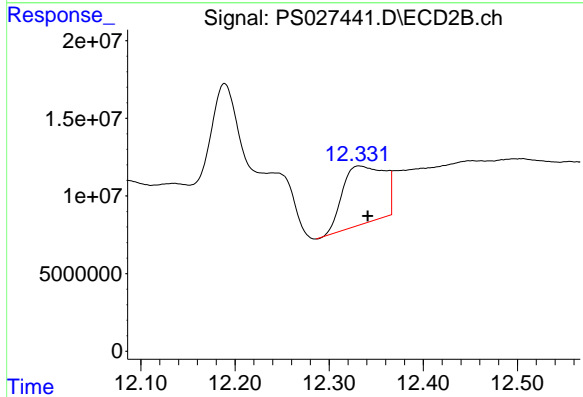
#13 2,4-DB
 R.T.: 10.898 min
 Delta R.T.: 0.028 min
 Response: 11371711
 Conc: 7.19 ng/ml



#15 Picloram

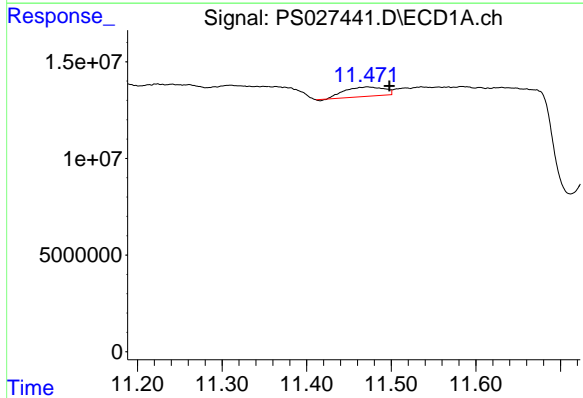
R.T.: 10.974 min
 Delta R.T.: -0.043 min
 Response: 615076183
 Conc: 31.90 ng/ml

Instrument :
 ECD_S
 ClientSampleId :
 I.BLK



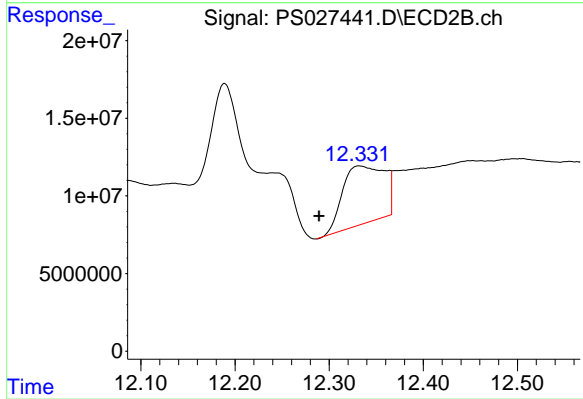
#15 Picloram

R.T.: 12.332 min
 Delta R.T.: -0.009 min
 Response: 115272708
 Conc: 6.39 ng/ml



#16 DCPA

R.T.: 11.472 min
 Delta R.T.: -0.026 min
 Response: 15906352
 Conc: N.D.



#16 DCPA

R.T.: 12.332 min
 Delta R.T.: 0.043 min
 Response: 115272708
 Conc: 8.29 ng/ml