

Data Path : Z:\pestpcbsrv\HPCHEM1\ECD_S\Data\PS081522\
 Data File : PS020276.D
 Signal(s) : Signal #1: ECD1A.ch Signal #2: ECD2B.ch
 Acq On : 15 Aug 2022 14:45
 Operator : AJ\MA
 Sample : I.BLK
 Misc :
 ALS Vial : 2 Sample Multiplier: 1

Instrument :
 ECD_S
 ClientSampleId :

Integration File signal 1: autoint1.e
 Integration File signal 2: autoint2.e
 Quant Time: Aug 15 15:33:04 2022
 Quant Method : Z:\pestpcbsrv\HPCHEM1\ECD_S\Method\PS080322.M
 Quant Title : 8080.M
 QLast Update : Thu Aug 04 02:05:37 2022
 Response via : Initial Calibration
 Integrator: ChemStation

Volume Inj. : 2 µl
 Signal #1 Phase : Rtx-CLPesticides Signal #2 Phase: Rtx-CLPesticides2
 Signal #1 Info : 30M x 0.32mm x0.5 Signal #2 Info : 30M x 0.32mm x 0.25µm

	Compound	RT#1	RT#2	Resp#1	Resp#2	ng/ml	ng/ml

System Monitoring Compounds							
4) S	2,4-DCAA	7.183	6.756	1366.5E6	442.8E6	463.422	543.342
Target Compounds							
1) T	Dalapon	3.020	0.000	110803	0	<MDL	N.D. #
2) T	3,5-DICHL...	6.422	0.000	151025	0	<MDL	N.D. #
5) T	DICAMBA	7.400	6.933	3821456	17164541	<MDL	4.816 #
6) T	MCPD	7.485f	6.999	1059576	21944144	<MDL	8.044 #
7) T	MCPA	7.667	0.000	15834744	0	1.229	N.D. #
8) T	DICHLORPROP	0.000	7.587f	0	1805640	N.D.	1.931
9) T	2,4-D	8.299	0.000	61936269	0	20.565	N.D. #
10) T	Pentachlo...	8.541f	0.000	122907	0	<MDL	N.D. #
11) T	2,4,5-TP ...	9.204f	8.654	37863911	3779331	2.222	<MDL #
12) T	2,4,5-T	9.402	9.016	8786620	140424	<MDL	<MDL #
13) T	2,4-DB	9.948f	9.519	9289160	904587	2.545	1.330 #
14) T	DINOSEB	11.094	0.000	22836531	0	1.435	N.D. #
15) T	Picloram	10.944	10.830	11913381	7332790	<MDL	<MDL #
16) T	DCPA	11.420	10.760	4519458	1105869	<MDL	<MDL #

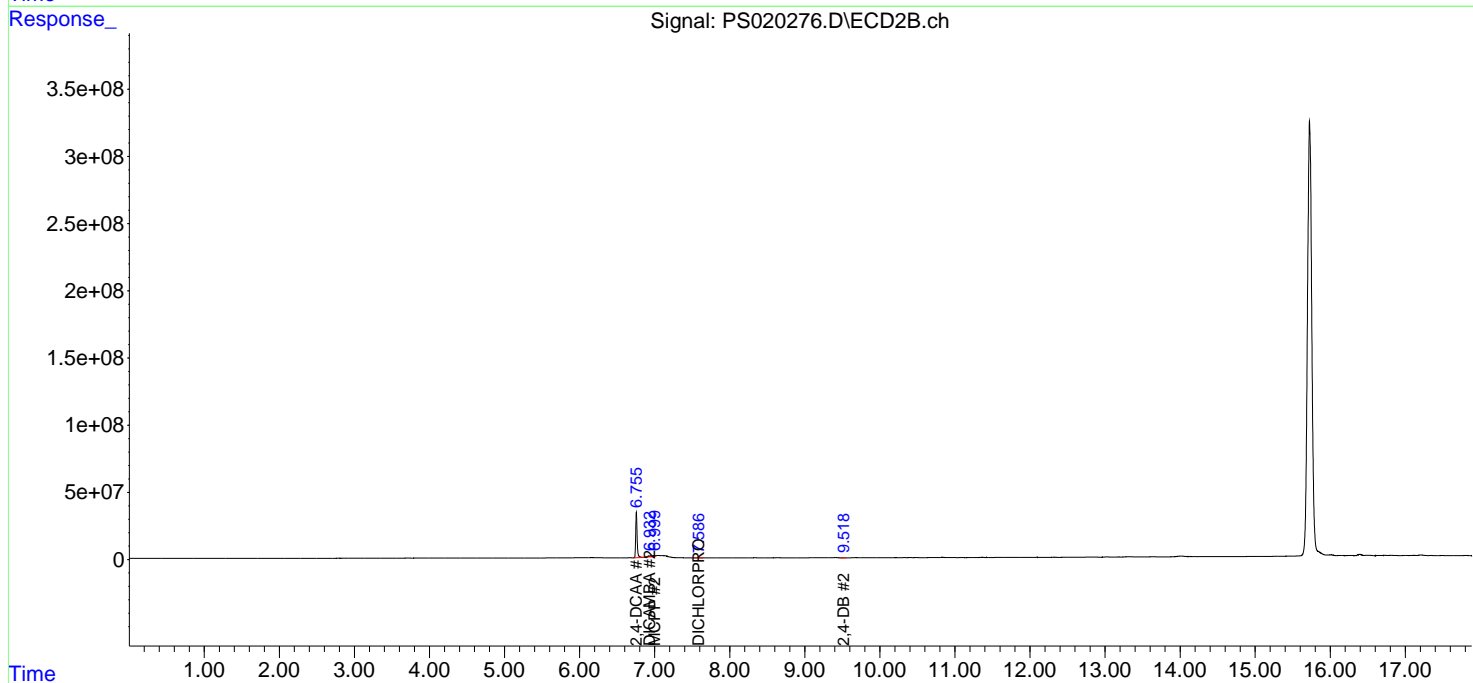
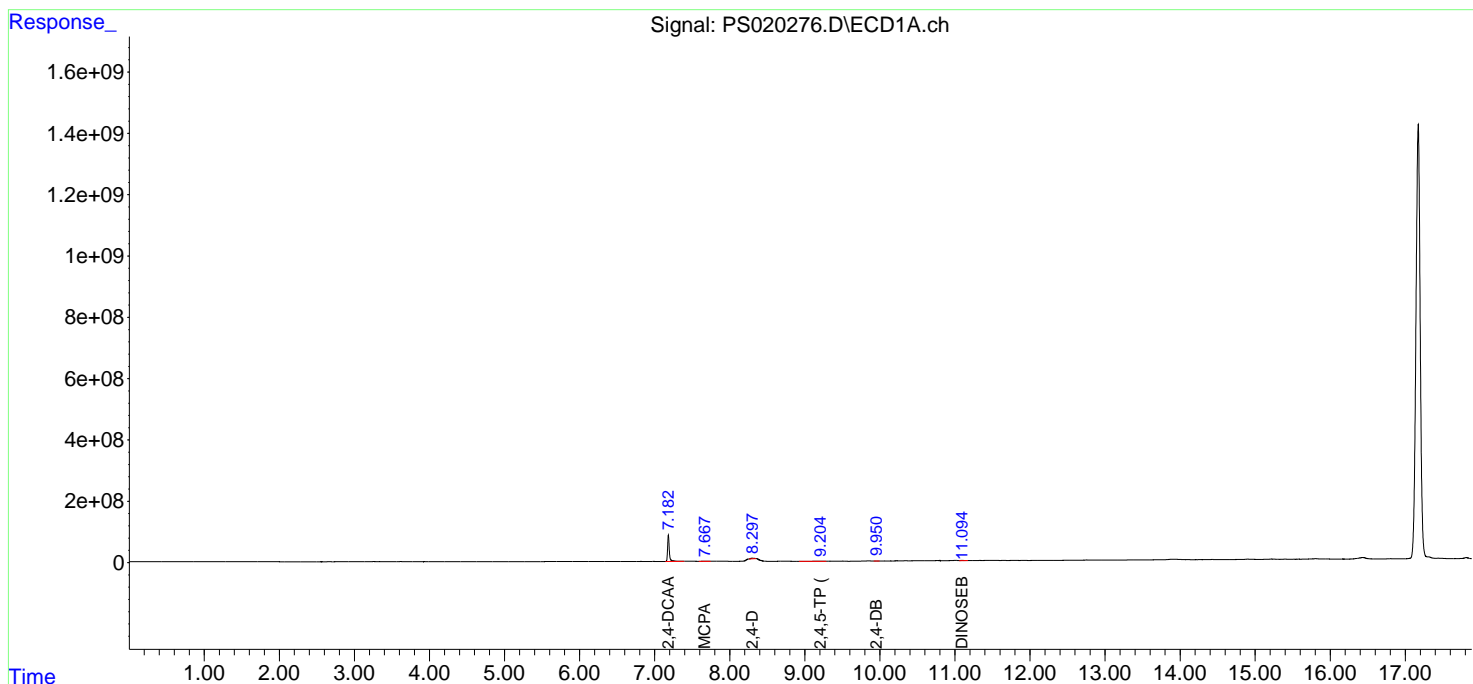
(f)=RT Delta > 1/2 Window (#)=Amounts differ by > 25% (m)=manual int.

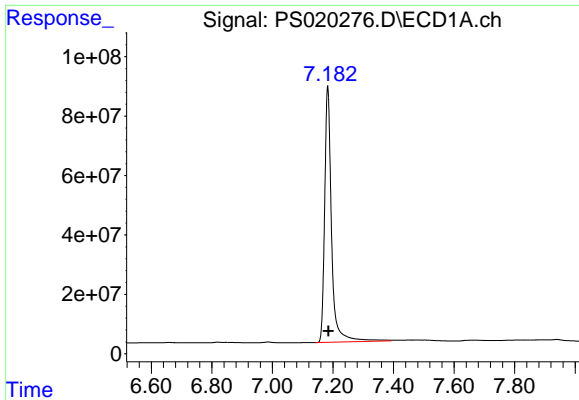
Data Path : Z:\pestpcbsrv\HPCHEM1\ECD_S\Data\PS081522\
 Data File : PS020276.D
 Signal(s) : Signal #1: ECD1A.ch Signal #2: ECD2B.ch
 Acq On : 15 Aug 2022 14:45
 Operator : AJ\MA
 Sample : I.BLK
 Misc :
 ALS Vial : 2 Sample Multiplier: 1

Instrument :
 ECD_S
 ClientSampleId :

Integration File signal 1: autoint1.e
 Integration File signal 2: autoint2.e
 Quant Time: Aug 15 15:33:04 2022
 Quant Method : Z:\pestpcbsrv\HPCHEM1\ECD_S\Method\PS080322.M
 Quant Title : 8080.M
 QLast Update : Thu Aug 04 02:05:37 2022
 Response via : Initial Calibration
 Integrator: ChemStation

Volume Inj. : 2 µl
 Signal #1 Phase : Rtx-CLPesticides Signal #2 Phase: Rtx-CLPesticides2
 Signal #1 Info : 30M x 0.32mm x 0.5 Signal #2 Info : 30M x 0.32mm x 0.25µm

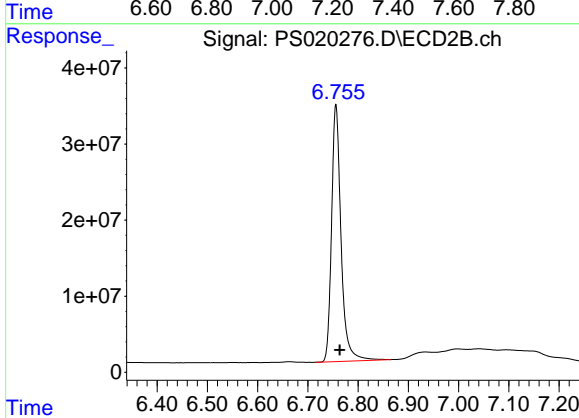




#4 2,4-DCAA

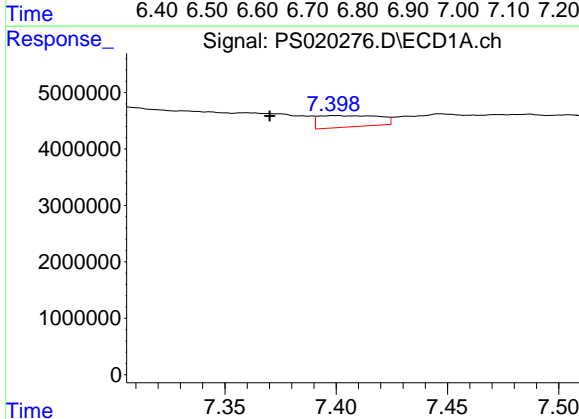
R.T.: 7.183 min
 Delta R.T.: -0.003 min
 Response: 1366504361
 Conc: 463.42 ng/ml

Instrument :
 ECD_S
 ClientSampleId :



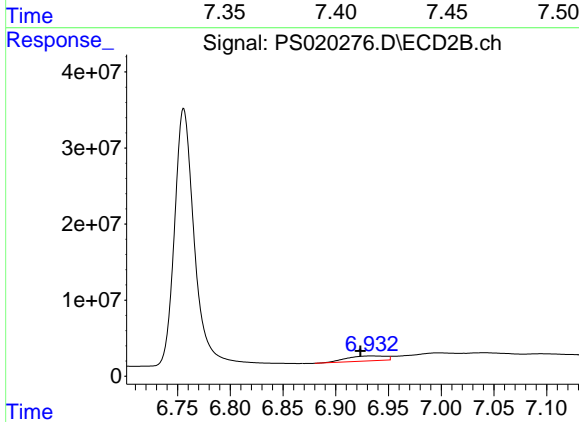
#4 2,4-DCAA

R.T.: 6.756 min
 Delta R.T.: -0.008 min
 Response: 442799394
 Conc: 543.34 ng/ml



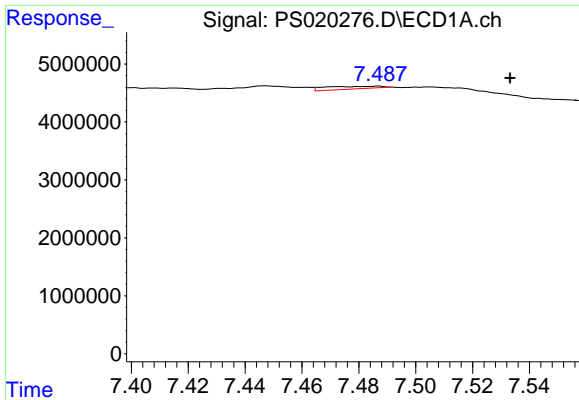
#5 DICAMBA

R.T.: 7.400 min
 Delta R.T.: 0.029 min
 Response: 3821456
 Conc: N.D.



#5 DICAMBA

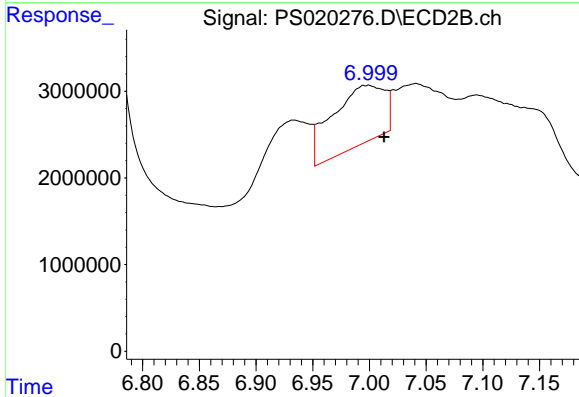
R.T.: 6.933 min
 Delta R.T.: 0.010 min
 Response: 17164541
 Conc: 4.82 ng/ml



#6 MCP

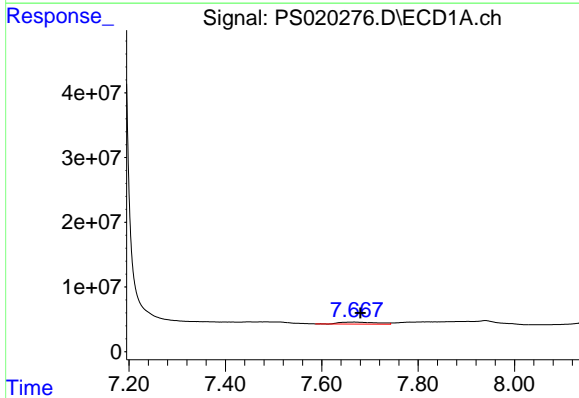
R.T.: 7.485 min
 Delta R.T.: -0.048 min
 Response: 1059576
 Conc: N.D.

Instrument :
 ECD_S
 ClientSampleId :



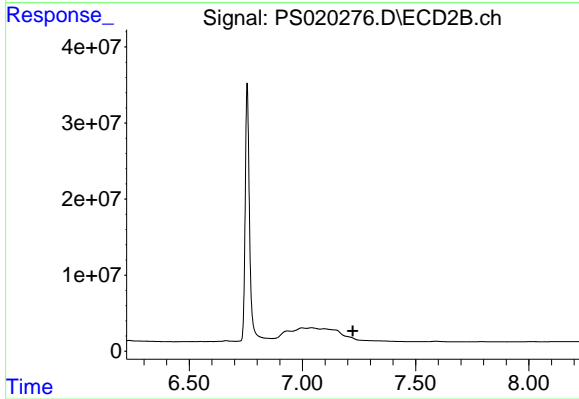
#6 MCP

R.T.: 6.999 min
 Delta R.T.: -0.014 min
 Response: 21944144
 Conc: 8.04 ug/ml



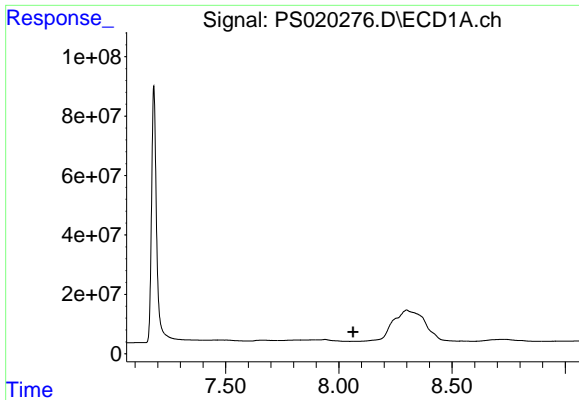
#7 MCPA

R.T.: 7.667 min
 Delta R.T.: -0.014 min
 Response: 15834744
 Conc: 1.23 ug/ml



#7 MCPA

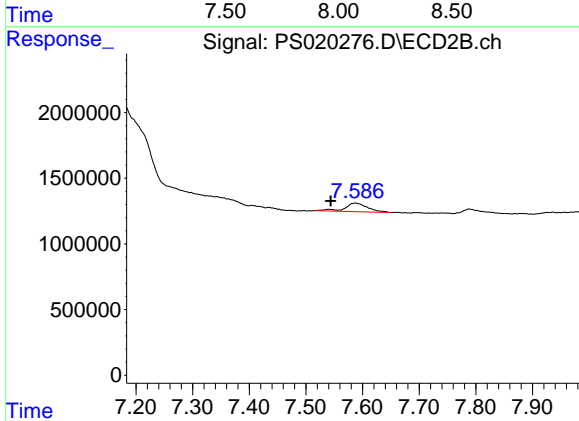
R.T.: 0.000 min
 Exp R.T. : 7.223 min
 Response: 0
 Conc: N.D.



#8 DICHLORPROP

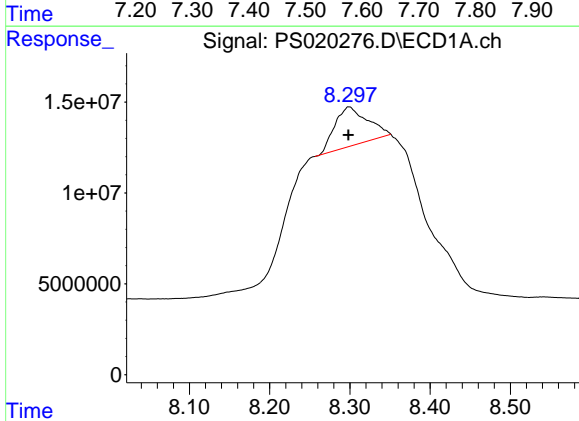
R.T.: 0.000 min
 Exp R.T.: 8.062 min
 Response: 0
 Conc: N.D.

Instrument :
 ECD_S
 ClientSampleId :



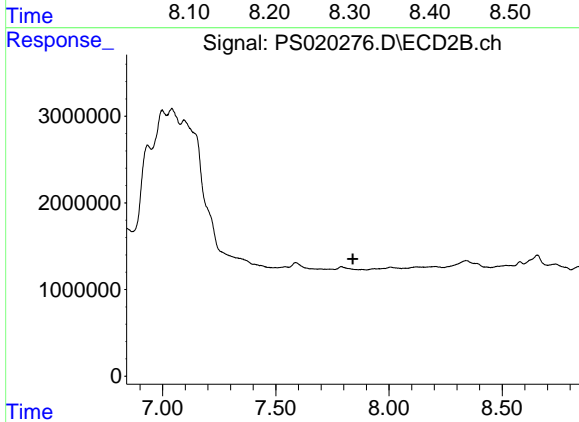
#8 DICHLORPROP

R.T.: 7.587 min
 Delta R.T.: 0.043 min
 Response: 1805640
 Conc: 1.93 ng/ml



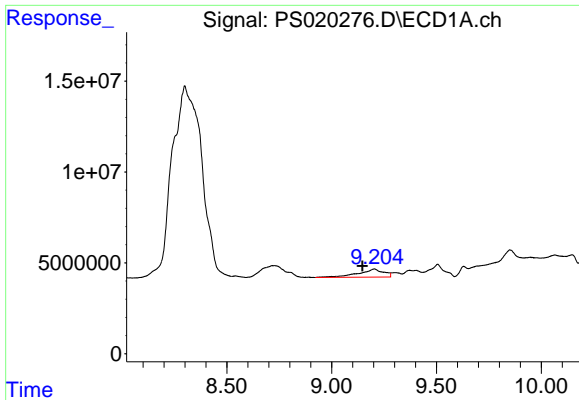
#9 2,4-D

R.T.: 8.299 min
 Delta R.T.: 0.000 min
 Response: 61936269
 Conc: 20.57 ng/ml



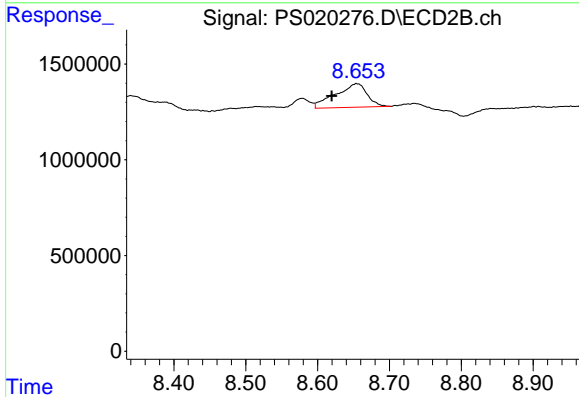
#9 2,4-D

R.T.: 0.000 min
 Exp R.T.: 7.840 min
 Response: 0
 Conc: N.D.

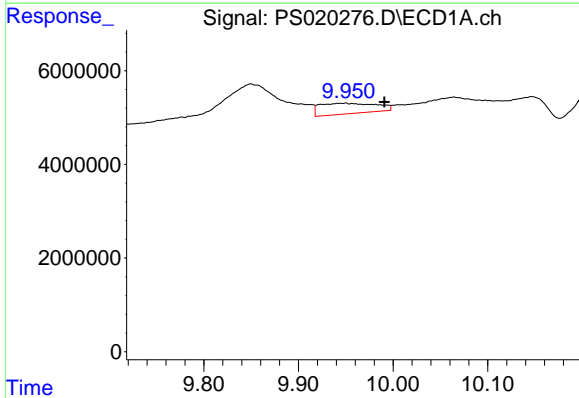


#11 2,4,5-TP (SILVEX)
 R.T.: 9.204 min
 Delta R.T.: 0.057 min
 Response: 37863911
 Conc: 2.22 ng/ml

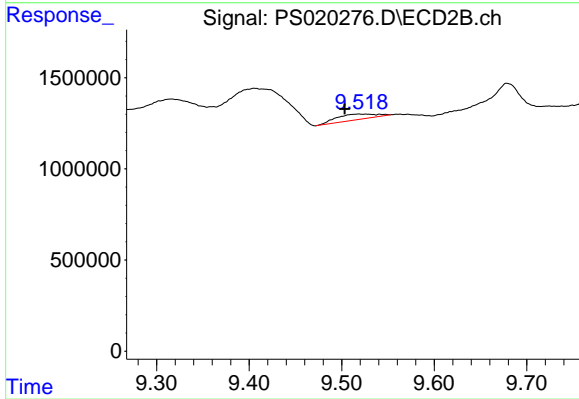
Instrument :
 ECD_S
 ClientSampleId :



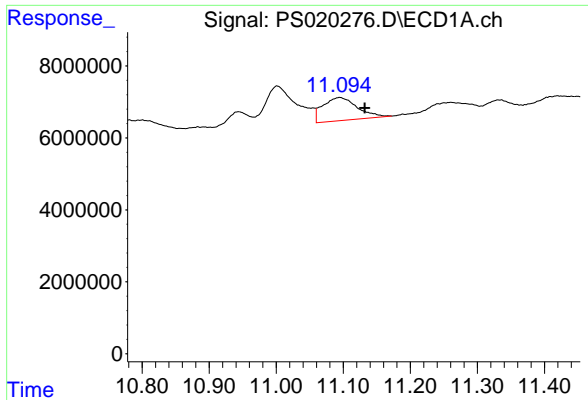
#11 2,4,5-TP (SILVEX)
 R.T.: 8.654 min
 Delta R.T.: 0.035 min
 Response: 3779331
 Conc: N.D.



#13 2,4-DB
 R.T.: 9.948 min
 Delta R.T.: -0.043 min
 Response: 9289160
 Conc: 2.55 ng/ml



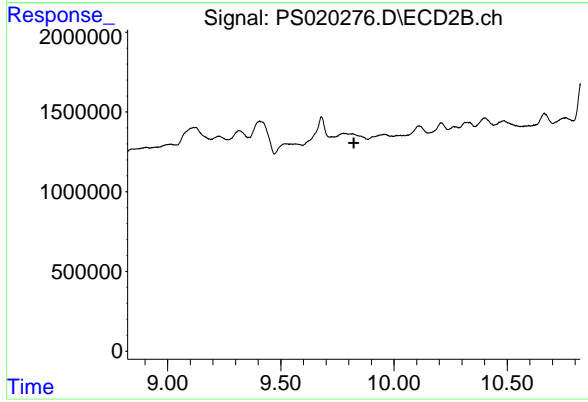
#13 2,4-DB
 R.T.: 9.519 min
 Delta R.T.: 0.015 min
 Response: 904587
 Conc: 1.33 ng/ml



#14 DINOSEB

R.T.: 11.094 min
 Delta R.T.: -0.038 min
 Response: 22836531
 Conc: 1.44 ng/ml

Instrument :
 ECD_S
 ClientSampleId :



#14 DINOSEB

R.T.: 0.000 min
 Exp R.T. : 9.823 min
 Response: 0
 Conc: N.D.