

Data Path : Z:\pestpcbsrv\HPCHEM1\ECD_S\Data\PS081523\
 Data File : PS024079.D
 Signal(s) : Signal #1: ECD1A.ch Signal #2: ECD2B.ch
 Acq On : 15 Aug 2023 17:13
 Operator : AR\AJ
 Sample : 03985-04
 Misc :
 ALS Vial : 9 Sample Multiplier: 1

Instrument :
 ECD_S
 ClientSampleId :

Integration File signal 1: autoint1.e
 Integration File signal 2: autoint2.e
 Quant Time: Aug 16 00:09:32 2023
 Quant Method : Z:\pestpcbsrv\HPCHEM1\ECD_S\Method\PS080823.M
 Quant Title : 8080.M
 QLast Update : Tue Aug 08 13:26:17 2023
 Response via : Initial Calibration
 Integrator: ChemStation

Volume Inj. : 2 µl
 Signal #1 Phase : Rtx-CLPesticides Signal #2 Phase: Rtx-CLPesticides2
 Signal #1 Info : 30M x 0.32mm x0.5 Signal #2 Info : 30M x 0.32mm x 0.25µm

| | Compound | RT#1 | RT#2 | Resp#1 | Resp#2 | ng/ml | ng/ml |
|-----------------------------|--------------|--------|--------|----------|----------|---------|----------|
| ----- | | | | | | | |
| System Monitoring Compounds | | | | | | | |
| 4) S | 2,4-DCAA | 6.369 | 6.797 | 546.8E6 | 159.3E6 | 276.101 | 236.768 |
| Target Compounds | | | | | | | |
| 1) T | Dalapon | 2.461 | 2.538 | 33598003 | 32285325 | 15.312 | 29.526 # |
| 2) T | 3,5-DICHL... | 5.734 | 5.964 | 17402470 | 860053 | 5.741 | <MDL # |
| 3) T | 4-Nitroph... | 6.210 | 6.458f | 14507390 | 2797013 | 13.107 | 7.067 # |
| 5) T | DICAMBA | 6.460f | 6.925 | 20693270 | 504759 | 2.352 | <MDL # |
| 6) T | MCP P | 6.684 | 7.051 | 6406955 | 283229 | 1.027 | <MDL # |
| 7) T | MCPA | 6.793 | 7.210f | 24196115 | 20212406 | 2.881 | 6.909 # |
| 8) T | DICHLORPROP | 7.118 | 7.588 | -362043 | 4811161 | N.D. | 6.581 |
| 9) T | 2,4-D | 7.295 | 7.867 | 4501974 | 2566884 | 1.817 | 3.013 # |
| 10) T | Pentachlo... | 7.517 | 8.277 | 23349817 | 2145123 | <MDL | <MDL # |
| 11) T | 2,4,5-TP ... | 8.066 | 8.659 | 10011247 | 31079697 | <MDL | 7.559 # |
| 12) T | 2,4,5-T | 8.318 | 9.017 | 74208320 | 1575202 | 6.623 | <MDL # |
| 13) T | 2,4-DB | 8.824 | 9.528 | 29878691 | 4049263 | 16.790 | 8.883 # |
| 14) T | DINOSEB | 9.871 | 9.843 | 5626499 | 10196469 | <MDL | 3.400 # |
| 15) T | Picloram | 0.000 | 10.802 | 0 | 22058161 | N.D. | 4.427 |
| 16) T | DCPA | 10.126 | 10.802 | 7496344 | 22058161 | <MDL | 4.291 # |

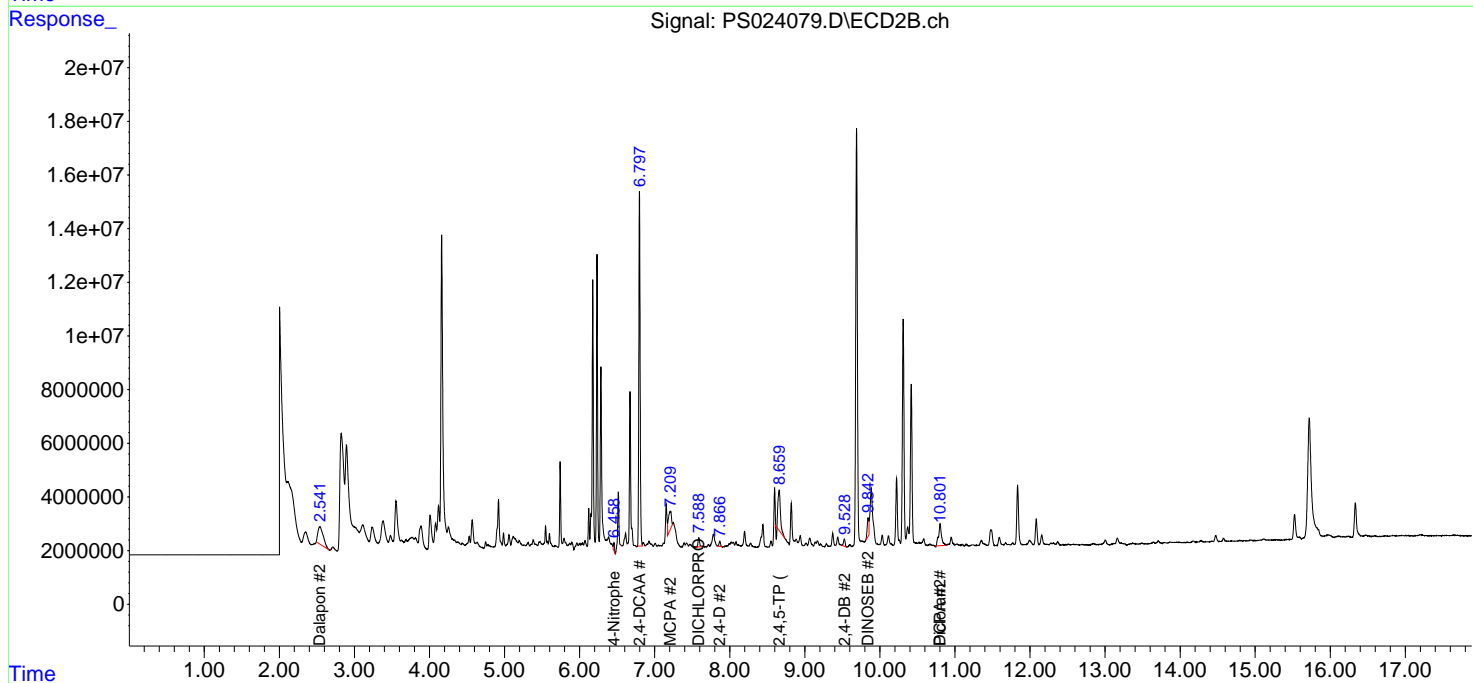
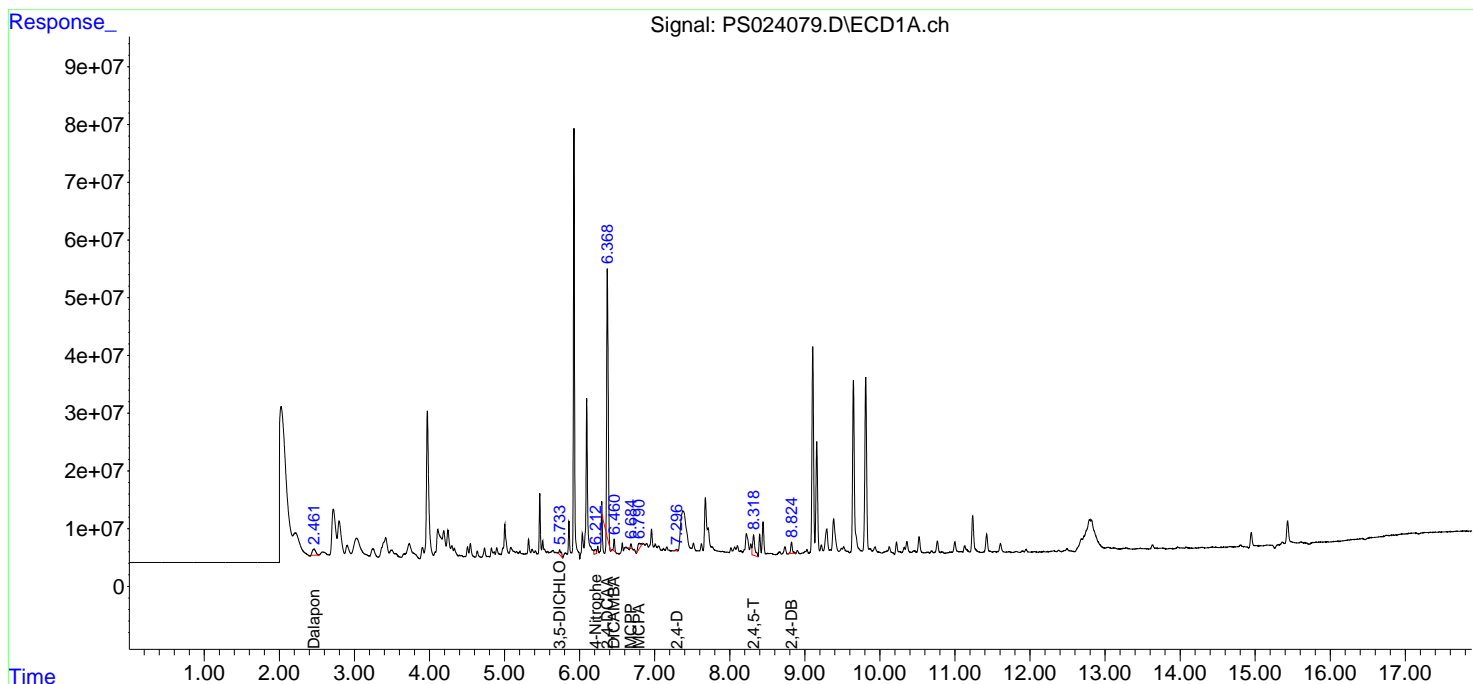
(f)=RT Delta > 1/2 Window (#)=Amounts differ by > 25% (m)=manual int.

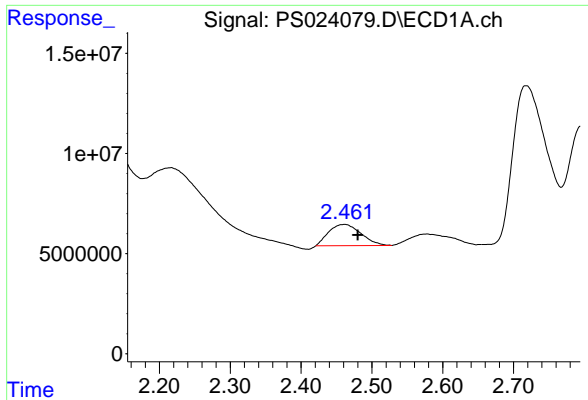
Data Path : Z:\pestpcbsrv\HPCHEM1\ECD_S\Data\PS081523\
 Data File : PS024079.D
 Signal(s) : Signal #1: ECD1A.ch Signal #2: ECD2B.ch
 Acq On : 15 Aug 2023 17:13
 Operator : AR\AJ
 Sample : 03985-04
 Misc :
 ALS Vial : 9 Sample Multiplier: 1

Instrument :
 ECD_S
 ClientSampleId :

Integration File signal 1: autoint1.e
 Integration File signal 2: autoint2.e
 Quant Time: Aug 16 00:09:32 2023
 Quant Method : Z:\pestpcbsrv\HPCHEM1\ECD_S\Method\PS080823.M
 Quant Title : 8080.M
 QLast Update : Tue Aug 08 13:26:17 2023
 Response via : Initial Calibration
 Integrator: ChemStation

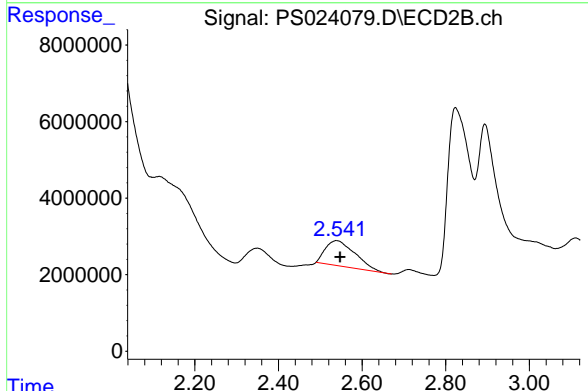
Volume Inj. : 2 µl
 Signal #1 Phase : Rtx-CLPesticides Signal #2 Phase: Rtx-CLPesticides2
 Signal #1 Info : 30M x 0.32mm x0.5 Signal #2 Info : 30M x 0.32mm x 0.25µm



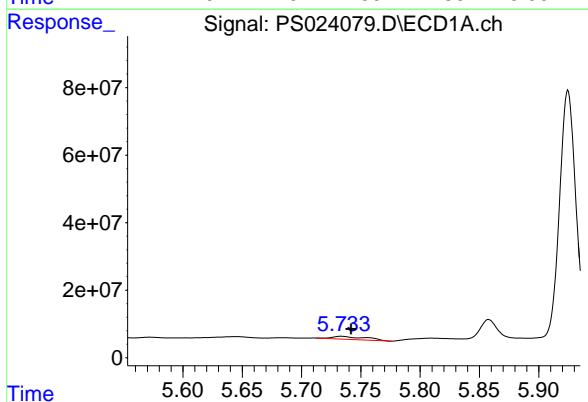


#1 Dalapon
 R.T.: 2.461 min
 Delta R.T.: -0.019 min
 Response: 33598003
 Conc: 15.31 ng/ml

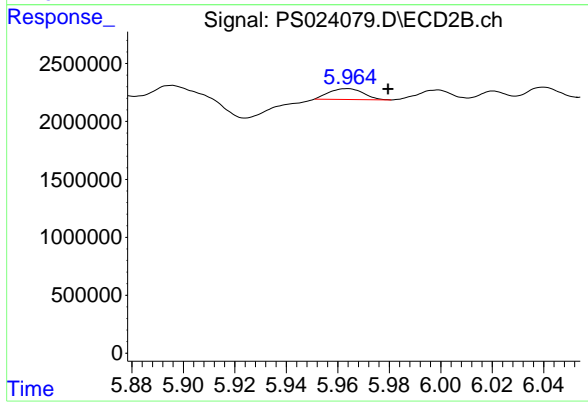
Instrument :
 ECD_S
 ClientSampleId :



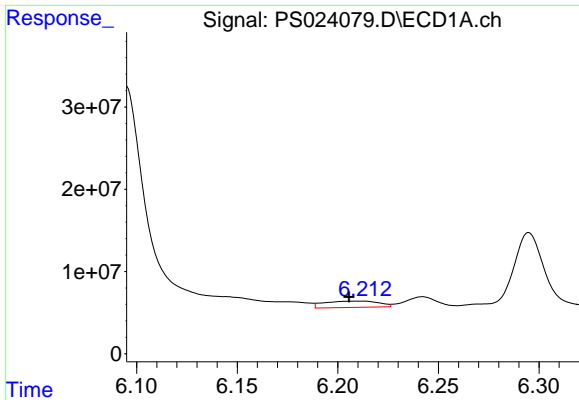
#1 Dalapon
 R.T.: 2.538 min
 Delta R.T.: -0.009 min
 Response: 32285325
 Conc: 29.53 ng/ml



#2 3,5-DICHLOROBENZOIC ACID
 R.T.: 5.734 min
 Delta R.T.: -0.008 min
 Response: 17402470
 Conc: 5.74 ng/ml



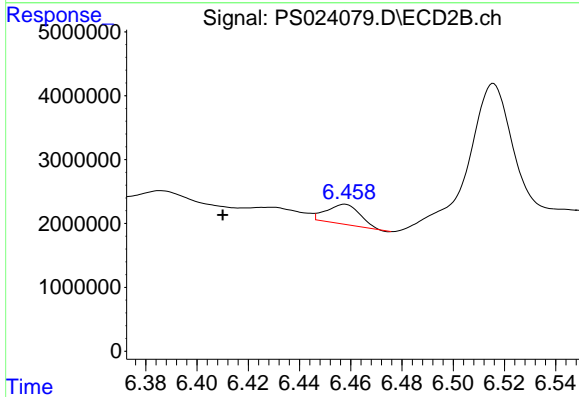
#2 3,5-DICHLOROBENZOIC ACID
 R.T.: 5.964 min
 Delta R.T.: -0.016 min
 Response: 860053
 Conc: N.D.



#3 4-Nitrophenol

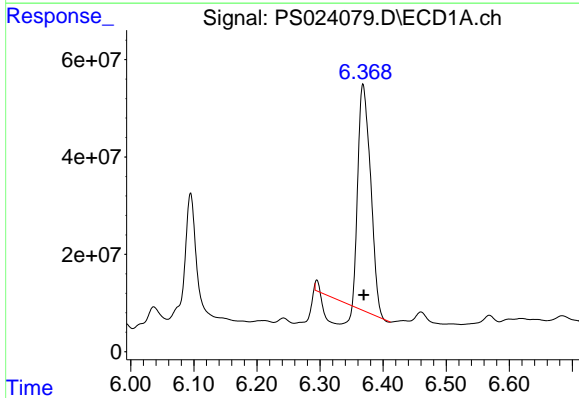
R.T.: 6.210 min
 Delta R.T.: 0.005 min
 Response: 14507390
 Conc: 13.11 ng/ml

Instrument :
 ECD_S
 ClientSampleId :



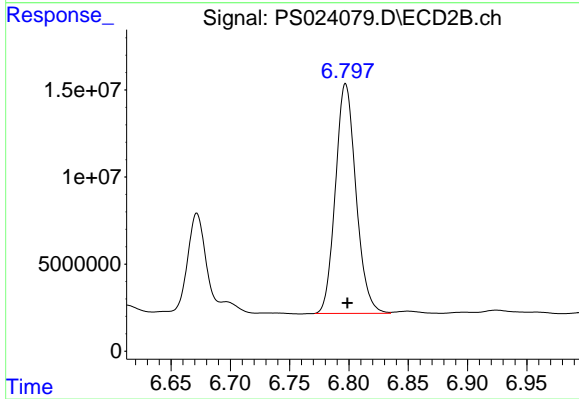
#3 4-Nitrophenol

R.T.: 6.458 min
 Delta R.T.: 0.048 min
 Response: 2797013
 Conc: 7.07 ng/ml



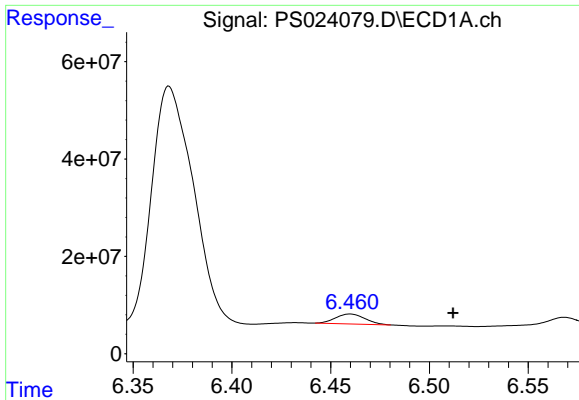
#4 2,4-DCAA

R.T.: 6.369 min
 Delta R.T.: 0.000 min
 Response: 546836135
 Conc: 276.10 ng/ml



#4 2,4-DCAA

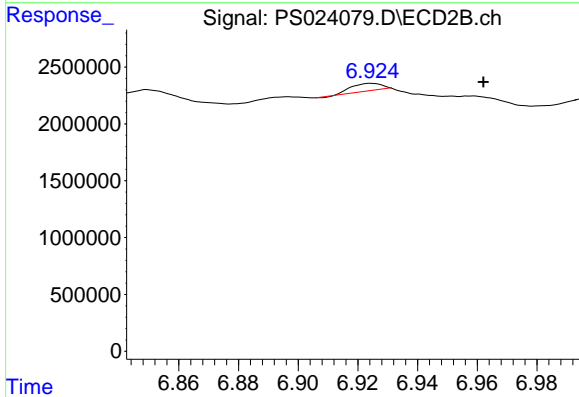
R.T.: 6.797 min
 Delta R.T.: -0.002 min
 Response: 159256725
 Conc: 236.77 ng/ml



#5 DICAMBA

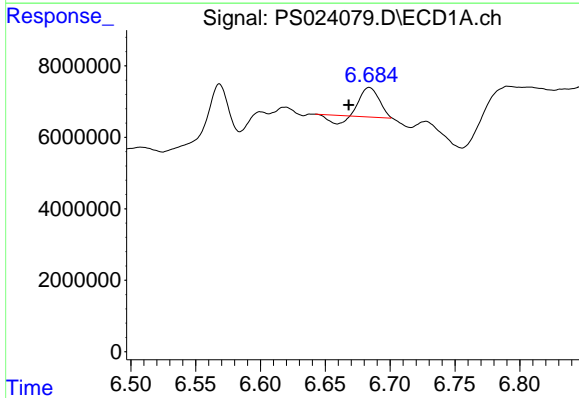
R.T.: 6.460 min
 Delta R.T.: -0.052 min
 Response: 20693270
 Conc: 2.35 ng/ml

Instrument :
 ECD_S
 ClientSampleId :



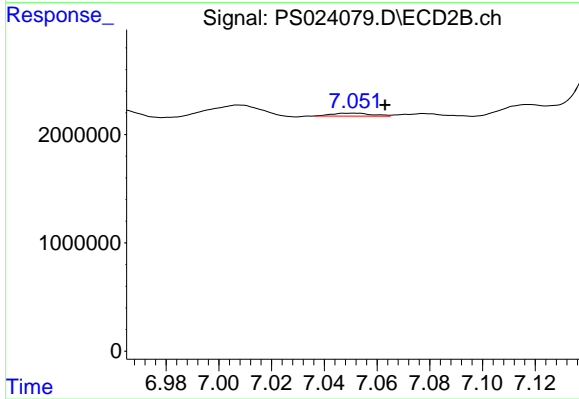
#5 DICAMBA

R.T.: 6.925 min
 Delta R.T.: -0.038 min
 Response: 504759
 Conc: N.D.



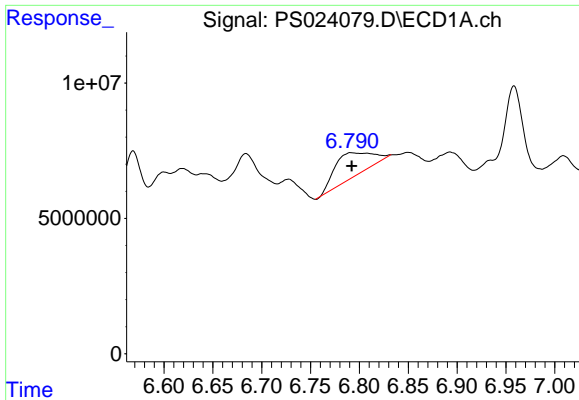
#6 MCPP

R.T.: 6.684 min
 Delta R.T.: 0.016 min
 Response: 6406955
 Conc: 1.03 ug/ml



#6 MCPP

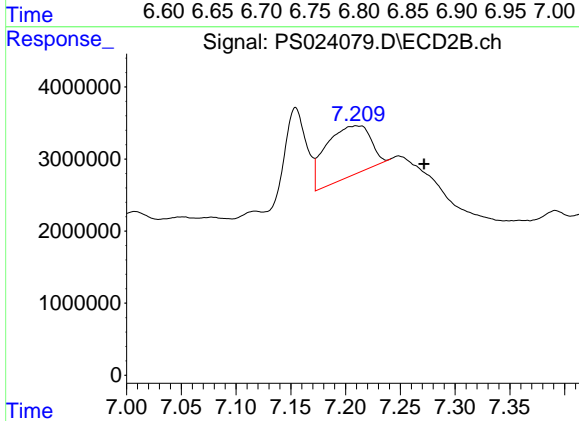
R.T.: 7.051 min
 Delta R.T.: -0.012 min
 Response: 283229
 Conc: N.D.



#7 MCPA

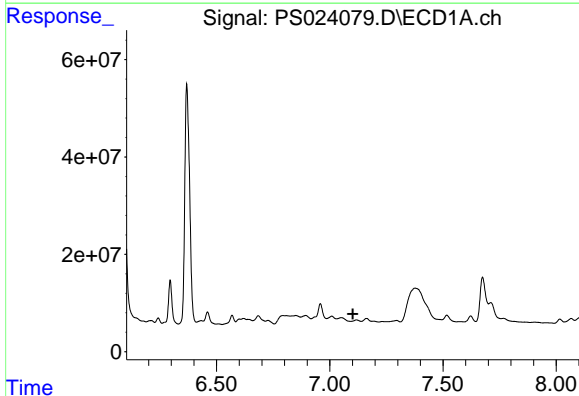
R.T.: 6.793 min
 Delta R.T.: 0.000 min
 Response: 24196115
 Conc: 2.88 ug/ml

Instrument :
 ECD_S
 ClientSampleId :



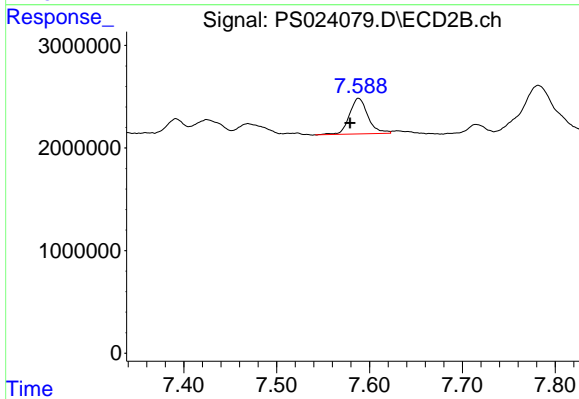
#7 MCPA

R.T.: 7.210 min
 Delta R.T.: -0.062 min
 Response: 20212406
 Conc: 6.91 ug/ml



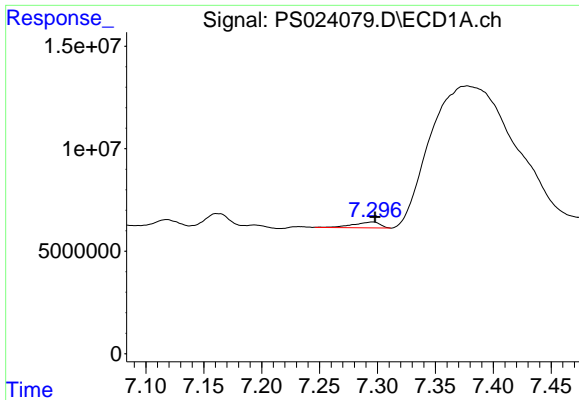
#8 DICHLORPROP

R.T.: 7.118 min
 Delta R.T.: 0.016 min
 Response: -362043
 Conc: N.D.



#8 DICHLORPROP

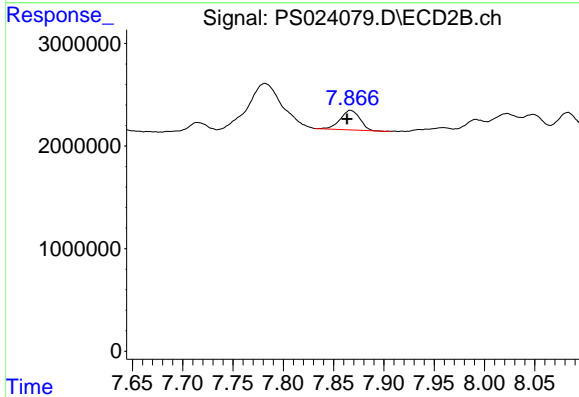
R.T.: 7.588 min
 Delta R.T.: 0.009 min
 Response: 4811161
 Conc: 6.58 ng/ml



#9 2,4-D

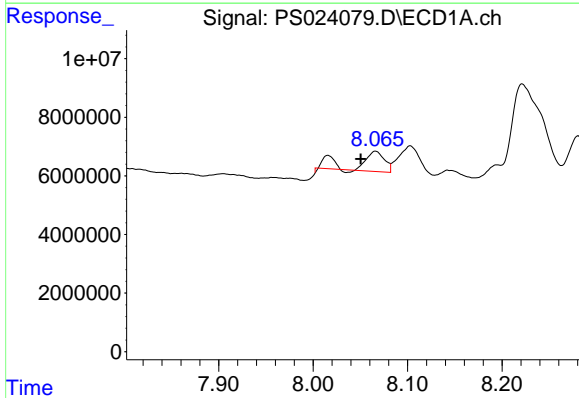
R.T.: 7.295 min
Delta R.T.: -0.003 min
Response: 4501974
Conc: 1.82 ng/ml

Instrument :
ECD_S
ClientSampleId :



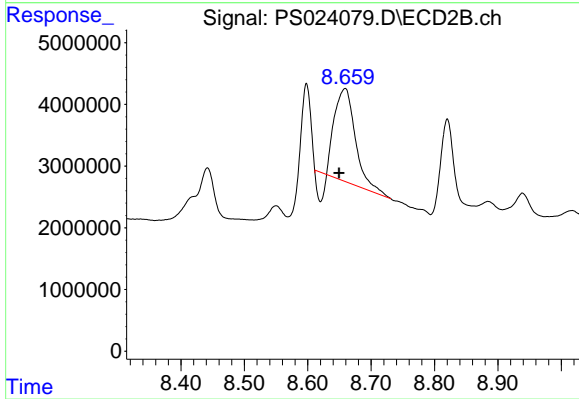
#9 2,4-D

R.T.: 7.867 min
Delta R.T.: 0.003 min
Response: 2566884
Conc: 3.01 ng/ml



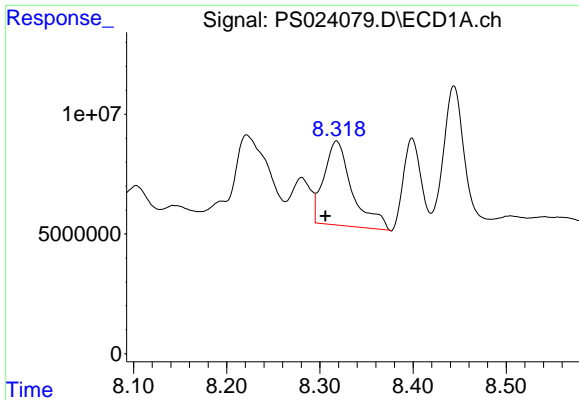
#11 2,4,5-TP (SILVEX)

R.T.: 8.066 min
Delta R.T.: 0.016 min
Response: 10011247
Conc: N.D.



#11 2,4,5-TP (SILVEX)

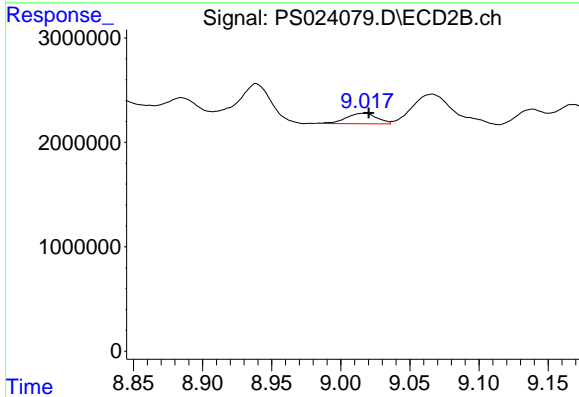
R.T.: 8.659 min
Delta R.T.: 0.010 min
Response: 31079697
Conc: 7.56 ng/ml



#12 2,4,5-T

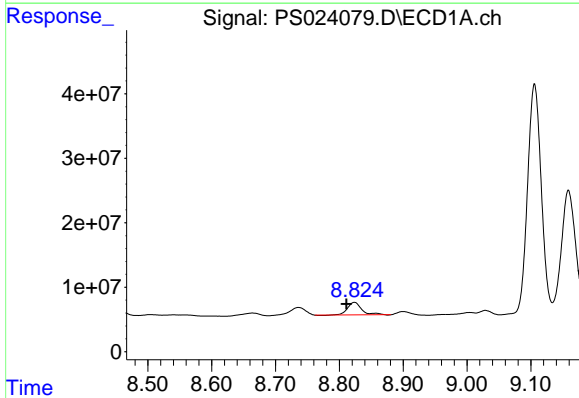
R.T.: 8.318 min
 Delta R.T.: 0.012 min
 Response: 74208320
 Conc: 6.62 ng/ml

Instrument :
 ECD_S
 ClientSampleId :



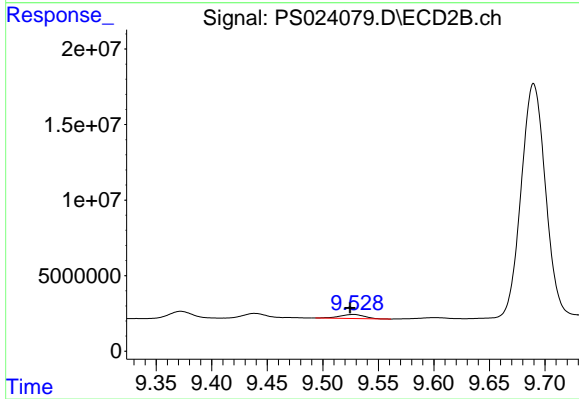
#12 2,4,5-T

R.T.: 9.017 min
 Delta R.T.: -0.003 min
 Response: 1575202
 Conc: N.D.



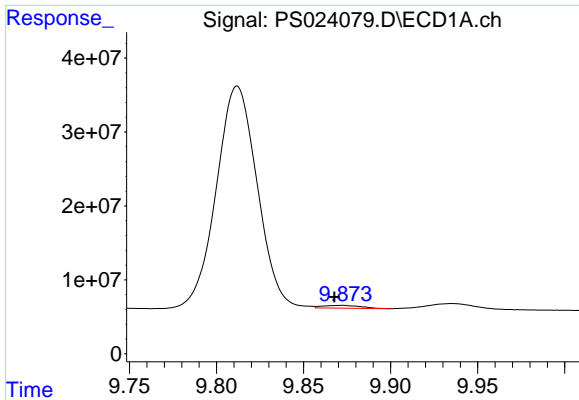
#13 2,4-DB

R.T.: 8.824 min
 Delta R.T.: 0.013 min
 Response: 29878691
 Conc: 16.79 ng/ml



#13 2,4-DB

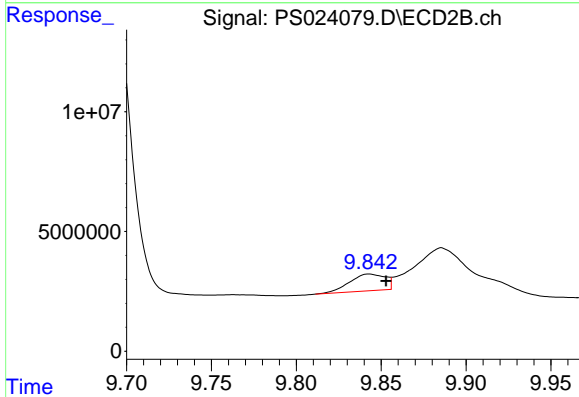
R.T.: 9.528 min
 Delta R.T.: 0.003 min
 Response: 4049263
 Conc: 8.88 ng/ml



#14 DINOSEB

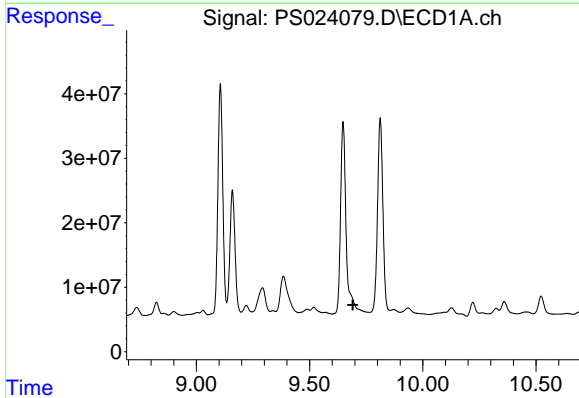
R.T.: 9.871 min
 Delta R.T.: 0.004 min
 Response: 5626499
 Conc: N.D.

Instrument :
 ECD_S
 ClientSampleId :



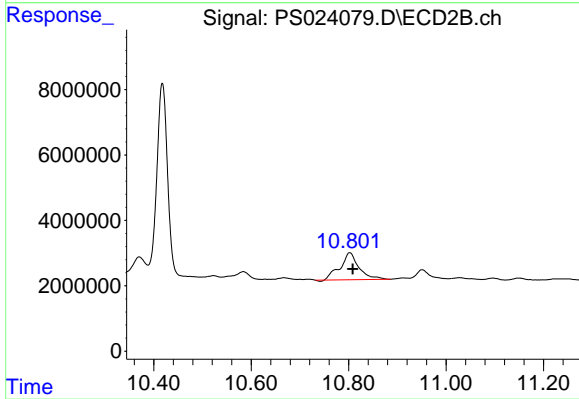
#14 DINOSEB

R.T.: 9.843 min
 Delta R.T.: -0.010 min
 Response: 10196469
 Conc: 3.40 ng/ml



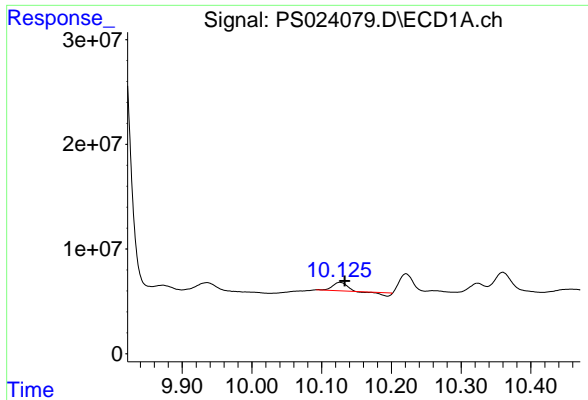
#15 Picloram

R.T.: 0.000 min
 Exp R.T. : 9.691 min
 Response: 0
 Conc: N.D.



#15 Picloram

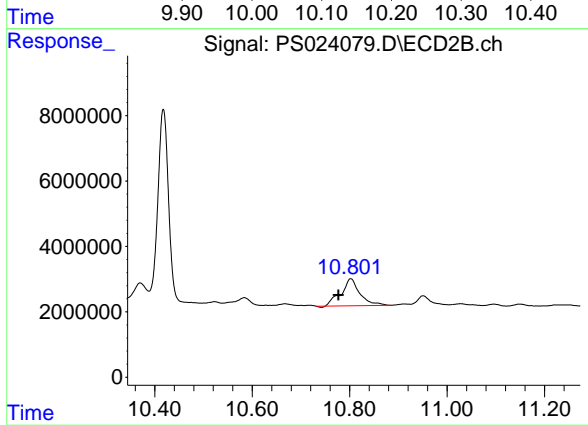
R.T.: 10.802 min
 Delta R.T.: -0.007 min
 Response: 22058161
 Conc: 4.43 ng/ml



#16 DCPA

R.T.: 10.126 min
Delta R.T.: -0.007 min
Response: 7496344
Conc: N.D.

Instrument :
ECD_S
ClientSampleId :



#16 DCPA

R.T.: 10.802 min
Delta R.T.: 0.026 min
Response: 22058161
Conc: 4.29 ng/ml