

Data Path : Z:\pestpcbsrv\HPCHEM1\ECD_S\Data\PS081525\
 Data File : PS031455.D
 Signal(s) : Signal #1: ECD1A.ch Signal #2: ECD2B.ch
 Acq On : 15 Aug 2025 17:04
 Operator : AR\AJ
 Sample : PB169278BL
 Misc :
 ALS Vial : 4 Sample Multiplier: 1

Instrument :
 ECD_S
 ClientSampleId :
 PB169278BL

Integration File signal 1: autoint1.e
 Integration File signal 2: autoint2.e
 Quant Time: Aug 18 03:46:48 2025
 Quant Method : Z:\pestpcbsrv\HPCHEM1\ECD_S\Method\PS080725.M
 Quant Title : 8080.M
 QLast Update : Fri Aug 08 03:17:54 2025
 Response via : Initial Calibration
 Integrator: ChemStation

Volume Inj. : 1 µl
 Signal #1 Phase : ZB-MR2 Signal #2 Phase: ZB-MR2
 Signal #1 Info : 30M x 0.32mm x0.5 Signal #2 Info : 30M x 0.32mm x 0.25µm

	Compound	RT#1	RT#2	Resp#1	Resp#2	ng/ml	ng/ml

System Monitoring Compounds							
4) S	2,4-DCAA	7.291	7.739	1428.5E6	430.5E6	450.077	509.257
Target Compounds							
1) T	Dalapon	2.636f	2.664f	659.9E6	889.8E6	125.728	334.370 #
2) T	3,5-DICHL...	6.446	6.727f	18038800	14199669	3.823	10.503 #
3) T	4-Nitroph...	7.124f	7.300	764788	100563	<MDL	<MDL #
6) T	MCPP	0.000	8.056	0	1081106	N.D.	<MDL
7) T	MCPA	7.808	0.000	18583318	0	1.866	N.D. #
9) T	2,4-D	8.406	8.963f	118.7E6	5868072	41.258	4.111 #
10) T	Pentachlo...	8.717	9.509	19730115	32382691	<MDL	<MDL #
11) T	2,4,5-TP ...	9.262f	0.000	2397876	0	<MDL	N.D. #
12) T	2,4,5-T	9.585	10.328	51824023	58438741	3.537	4.936 #
13) T	2,4-DB	10.176	10.855f	234.7E6	3196065	122.130	3.313 #
14) T	DINOSEB	11.334f	11.287	18333094	12716025	1.446	1.345
15) T	Picloram	11.215	12.410	74357636	81201493	5.696	4.632
16) T	DCPA	11.631f	0.000	37297256	0	1.637	N.D. #

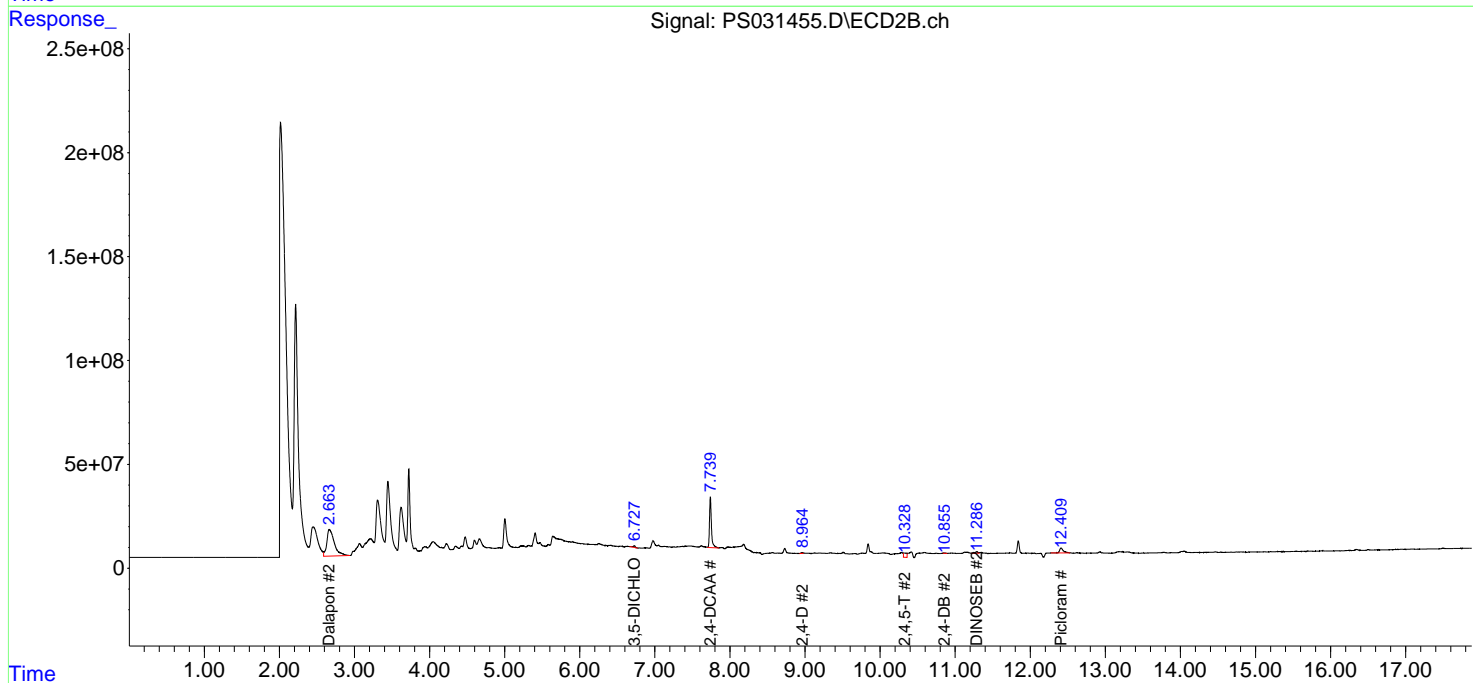
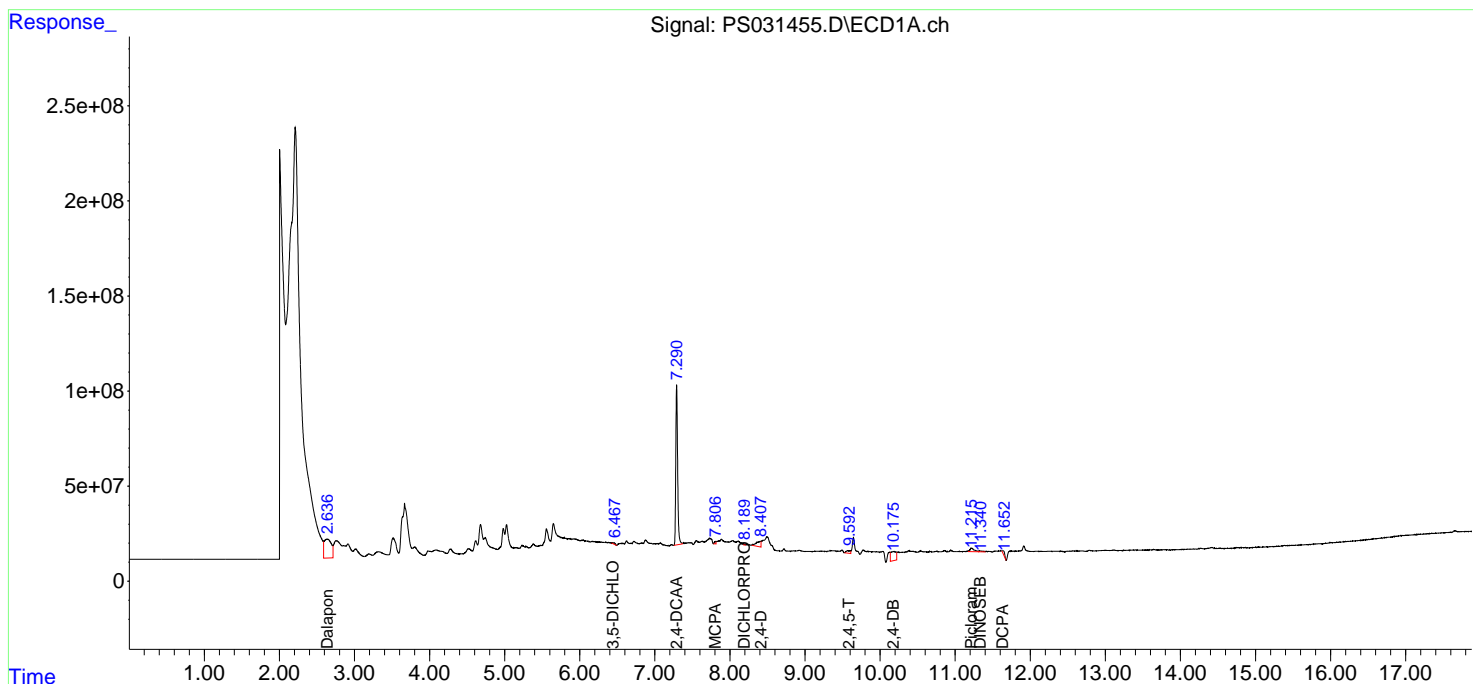
(f)=RT Delta > 1/2 Window (#)=Amounts differ by > 25% (m)=manual int.

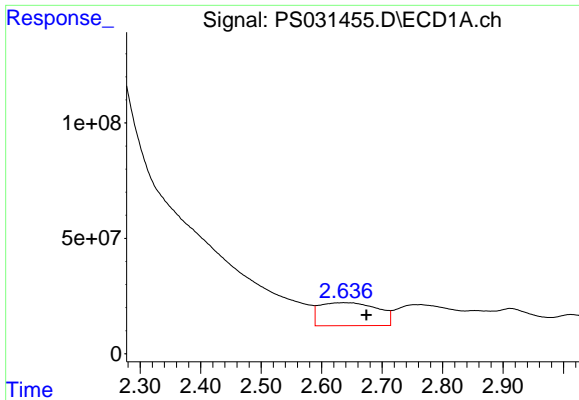
Data Path : Z:\pestpcbsrv\HPCHEM1\ECD_S\Data\PS081525\
 Data File : PS031455.D
 Signal(s) : Signal #1: ECD1A.ch Signal #2: ECD2B.ch
 Acq On : 15 Aug 2025 17:04
 Operator : AR\AJ
 Sample : PB169278BL
 Misc :
 ALS Vial : 4 Sample Multiplier: 1

Instrument :
 ECD_S
 ClientSampleId :
 PB169278BL

Integration File signal 1: autoint1.e
 Integration File signal 2: autoint2.e
 Quant Time: Aug 18 03:46:48 2025
 Quant Method : Z:\pestpcbsrv\HPCHEM1\ECD_S\Method\PS080725.M
 Quant Title : 8080.M
 QLast Update : Fri Aug 08 03:17:54 2025
 Response via : Initial Calibration
 Integrator: ChemStation

Volume Inj. : 1 µl
 Signal #1 Phase : ZB-MR1 Signal #2 Phase: ZB-MR2
 Signal #1 Info : 30M x 0.32mm x0.5 Signal #2 Info : 30M x 0.32mm x 0.25µm

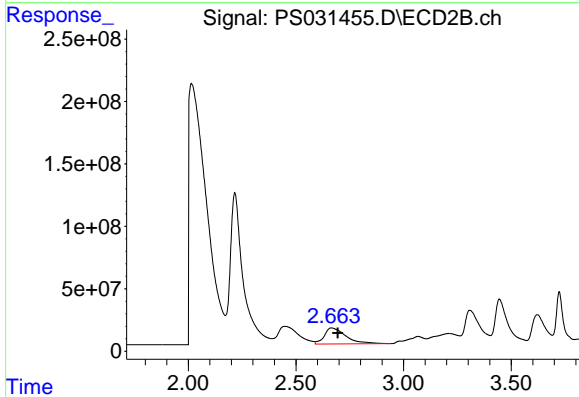




#1 Dalapon

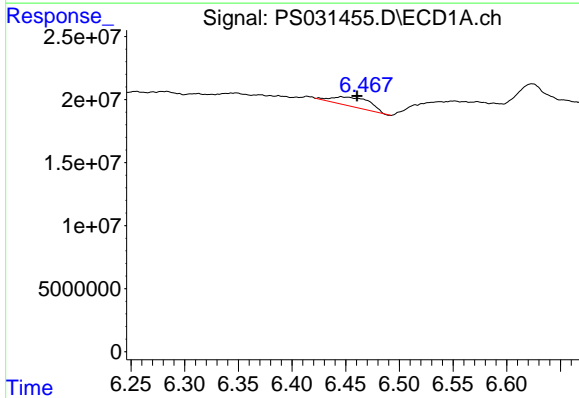
R.T.: 2.636 min
 Delta R.T.: -0.038 min
 Response: 659936959
 Conc: 125.73 ng/ml

Instrument :
 ECD_S
 ClientSampleId :
 PB169278BL



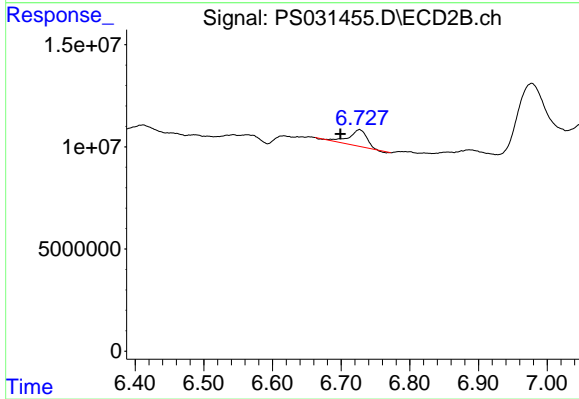
#1 Dalapon

R.T.: 2.664 min
 Delta R.T.: -0.031 min
 Response: 889763429
 Conc: 334.37 ng/ml



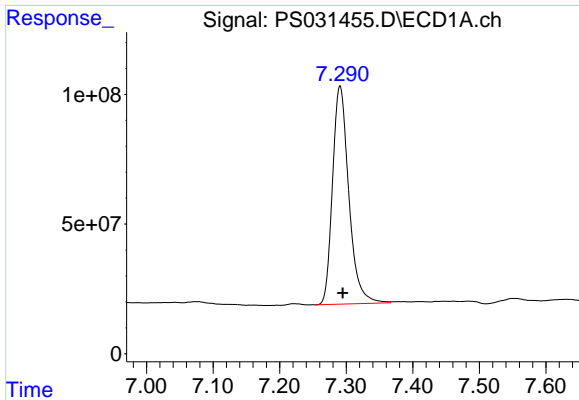
#2 3,5-DICHLOROBENZOIC ACID

R.T.: 6.446 min
 Delta R.T.: -0.015 min
 Response: 18038800
 Conc: 3.82 ng/ml



#2 3,5-DICHLOROBENZOIC ACID

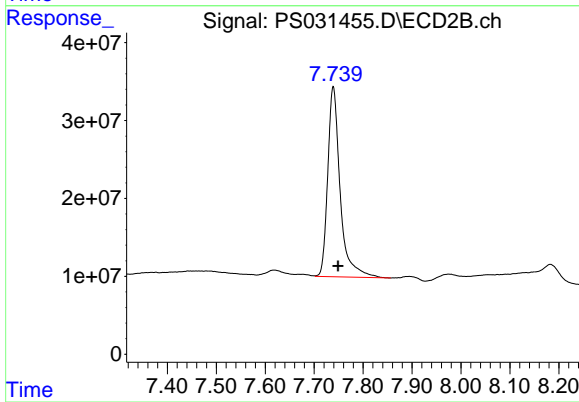
R.T.: 6.727 min
 Delta R.T.: 0.028 min
 Response: 14199669
 Conc: 10.50 ng/ml



#4 2,4-DCAA

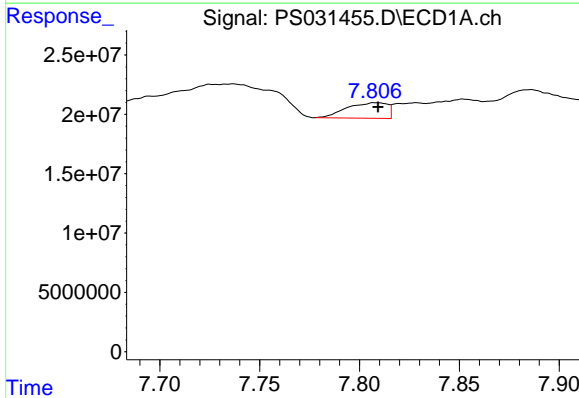
R.T.: 7.291 min
 Delta R.T.: -0.004 min
 Response: 1428540207
 Conc: 450.08 ng/ml

Instrument :
 ECD_S
 ClientSampleId :
 PB169278BL



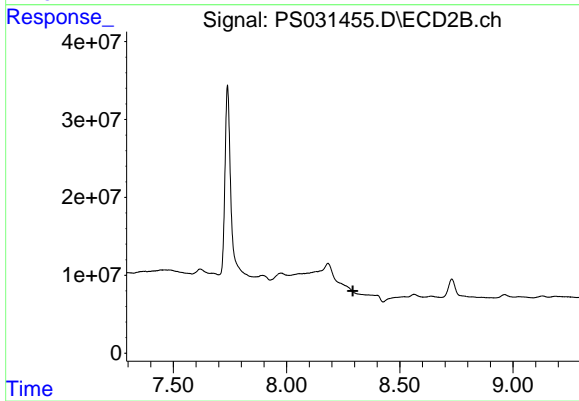
#4 2,4-DCAA

R.T.: 7.739 min
 Delta R.T.: -0.010 min
 Response: 430495148
 Conc: 509.26 ng/ml



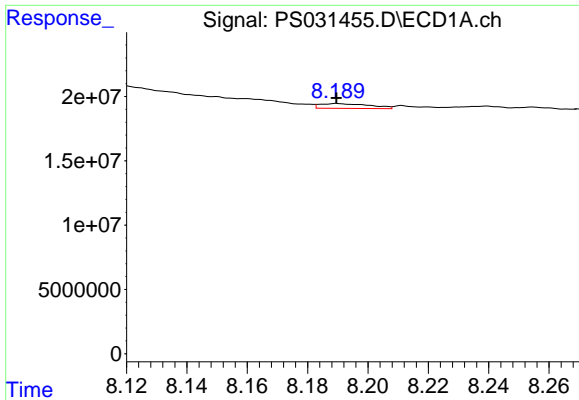
#7 MCPA

R.T.: 7.808 min
 Delta R.T.: 0.000 min
 Response: 18583318
 Conc: 1.87 ug/ml



#7 MCPA

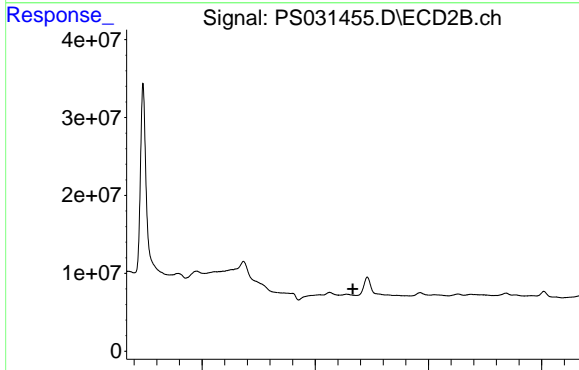
R.T.: 0.000 min
 Exp R.T.: 8.293 min
 Response: 0
 Conc: N.D.



#8 DICHLORPROP

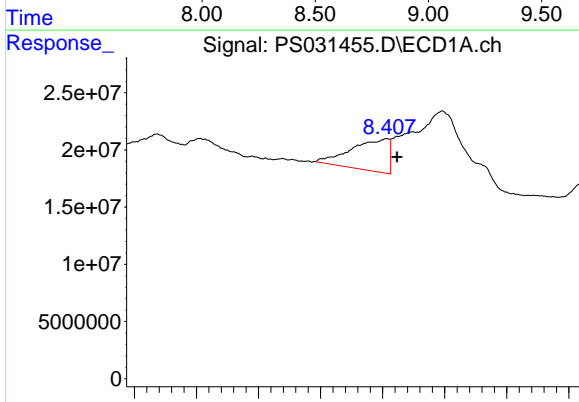
R.T.: 8.190 min
 Delta R.T.: 0.000 min
 Response: 4338494
 Conc: 1.37 ng/ml

Instrument :
 ECD_S
 ClientSampleId :
 PB169278BL



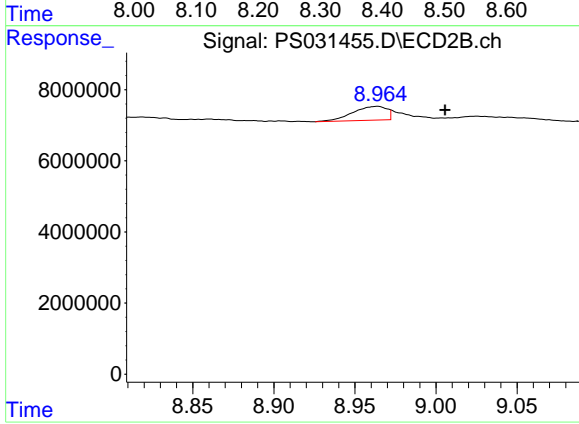
#8 DICHLORPROP

R.T.: 8.638 min
 Delta R.T.: -0.028 min
 Response: -4534465
 Conc: N.D.



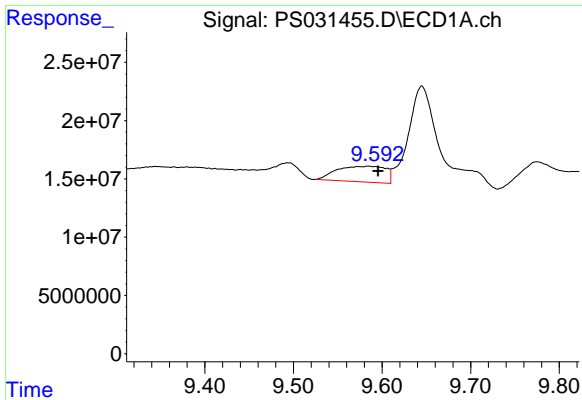
#9 2,4-D

R.T.: 8.406 min
 Delta R.T.: -0.018 min
 Response: 118690369
 Conc: 41.26 ng/ml



#9 2,4-D

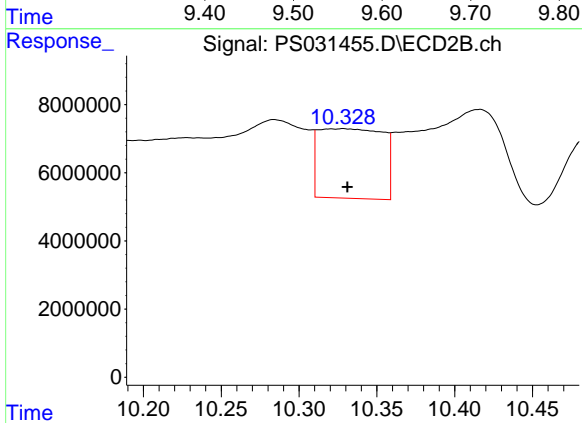
R.T.: 8.963 min
 Delta R.T.: -0.043 min
 Response: 5868072
 Conc: 4.11 ng/ml



#12 2,4,5-T

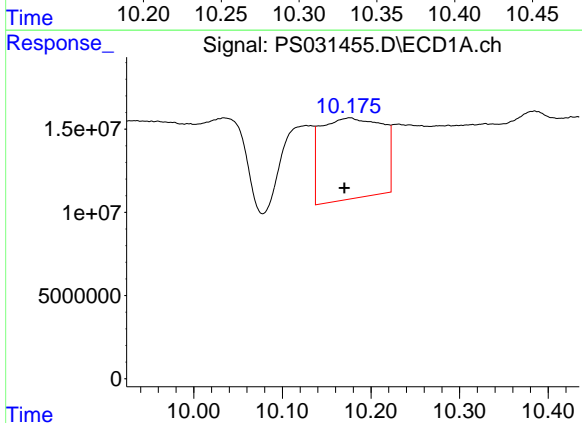
R.T.: 9.585 min
 Delta R.T.: -0.011 min
 Response: 51824023
 Conc: 3.54 ng/ml

Instrument :
 ECD_S
 ClientSampleId :
 PB169278BL



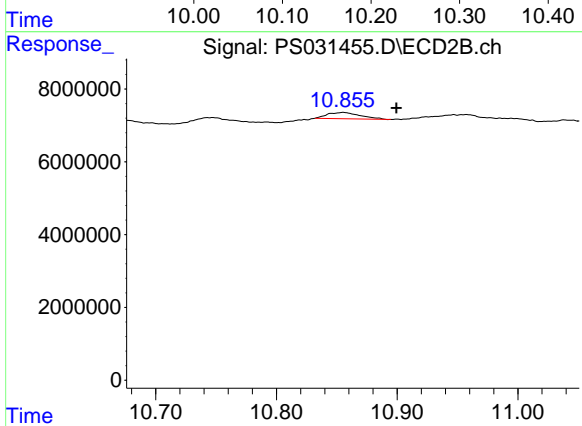
#12 2,4,5-T

R.T.: 10.328 min
 Delta R.T.: -0.003 min
 Response: 58438741
 Conc: 4.94 ng/ml



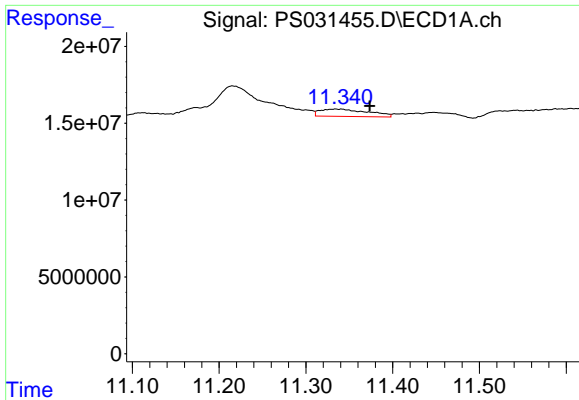
#13 2,4-DB

R.T.: 10.176 min
 Delta R.T.: 0.006 min
 Response: 234698966
 Conc: 122.13 ng/ml



#13 2,4-DB

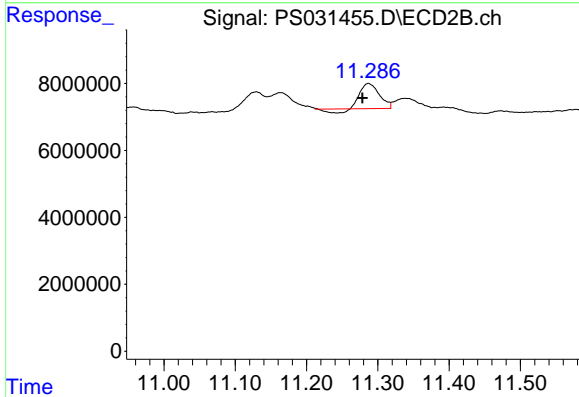
R.T.: 10.855 min
 Delta R.T.: -0.044 min
 Response: 3196065
 Conc: 3.31 ng/ml



#14 DINOSEB

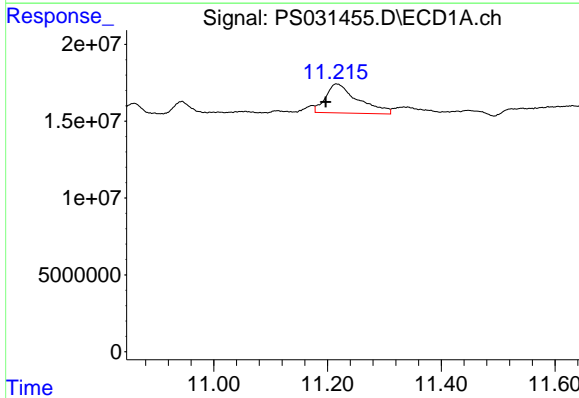
R.T.: 11.334 min
 Delta R.T.: -0.039 min
 Response: 18333094
 Conc: 1.45 ng/ml

Instrument :
 ECD_S
 ClientSampleId :
 PB169278BL



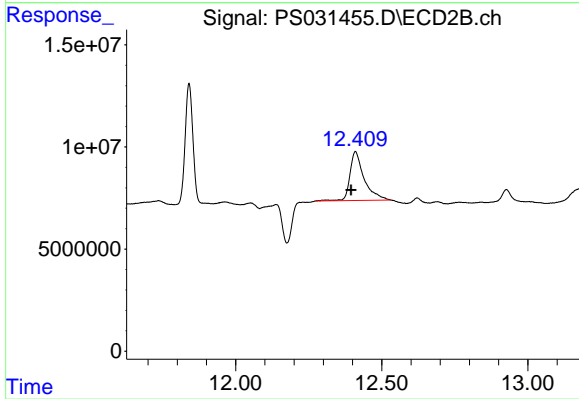
#14 DINOSEB

R.T.: 11.287 min
 Delta R.T.: 0.009 min
 Response: 12716025
 Conc: 1.34 ng/ml



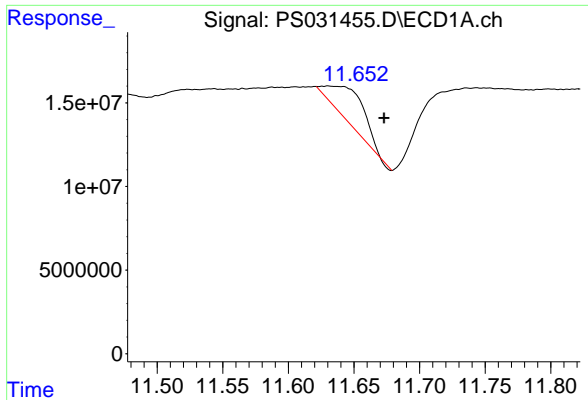
#15 Picloram

R.T.: 11.215 min
 Delta R.T.: 0.018 min
 Response: 74357636
 Conc: 5.70 ng/ml



#15 Picloram

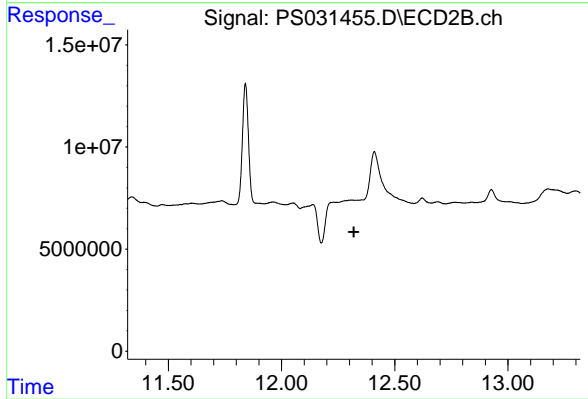
R.T.: 12.410 min
 Delta R.T.: 0.014 min
 Response: 81201493
 Conc: 4.63 ng/ml



#16 DCPA

R.T.: 11.631 min
 Delta R.T.: -0.042 min
 Response: 37297256
 Conc: 1.64 ng/ml

Instrument :
 ECD_S
 ClientSampleId :
 PB169278BL



#16 DCPA

R.T.: 0.000 min
 Exp R.T. : 12.320 min
 Response: 0
 Conc: N.D.