

Data Path : Z:\pestpcbsrv\HPCHEM1\ECD_S\Data\PS081525\
 Data File : PS031456.D
 Signal(s) : Signal #1: ECD1A.ch Signal #2: ECD2B.ch
 Acq On : 15 Aug 2025 17:28
 Operator : AR\AJ
 Sample : PB169278BS
 Misc :
 ALS Vial : 5 Sample Multiplier: 1

Instrument :
 ECD_S
 ClientSampleId :
 PB169278BS

Integration File signal 1: autoint1.e
 Integration File signal 2: autoint2.e
 Quant Time: Aug 18 03:47:08 2025
 Quant Method : Z:\pestpcbsrv\HPCHEM1\ECD_S\Method\PS080725.M
 Quant Title : 8080.M
 QLast Update : Fri Aug 08 03:17:54 2025
 Response via : Initial Calibration
 Integrator: ChemStation

Volume Inj. : 1 µl
 Signal #1 Phase : ZB-MR2 Signal #2 Phase: ZB-MR2
 Signal #1 Info : 30M x 0.32mm x0.5 Signal #2 Info : 30M x 0.32mm x 0.25µm

	Compound	RT#1	RT#2	Resp#1	Resp#2	ng/ml	ng/ml

System Monitoring Compounds							
4) S	2,4-DCAA	7.290	7.744	1780.6E6	430.4E6	561.008	509.119
Target Compounds							
1) T	Dalapon	2.675	2.694	2463.6E6	1202.1E6	469.350	451.732
2) T	3,5-DICHL...	6.457	6.695	2452.5E6	657.9E6	519.793	486.653
3) T	4-Nitroph...	7.097	7.292	513.2E6	536.3E6	497.436	426.705
5) T	DICAMBA	7.475	7.941	7262.2E6	2773.3E6	519.972	488.032
6) T	MCP P	7.653	8.037	404.0E6	84283294	50.218	47.676
7) T	MCPA	7.802	8.285	489.9E6	129.6E6	49.178	46.182
8) T	DICHLORPROP	8.184	8.661	1660.7E6	655.8E6	523.475	491.209
9) T	2,4-D	8.419	9.002	1535.5E6	678.7E6	533.765	475.544
10) T	Pentachlo...	8.716	9.512	26991.5E6	17993.5E6	562.178	516.632
11) T	2,4,5-TP ...	9.294	9.897	9796.9E6	6593.7E6	546.586	502.722
12) T	2,4,5-T	9.590	10.326	8148.5E6	5820.1E6	556.168	491.574
13) T	2,4-DB	10.166	10.894	1017.7E6	445.5E6	529.576	461.694
14) T	DINOSEB	11.366	11.271	6914.4E6	4643.3E6	545.362	490.994
15) T	Picloram	11.192	12.392	6747.6E6	7825.6E6	516.889	446.419
16) T	DCPA	11.666	12.313	13012.0E6	10226.9E6	571.218	519.123

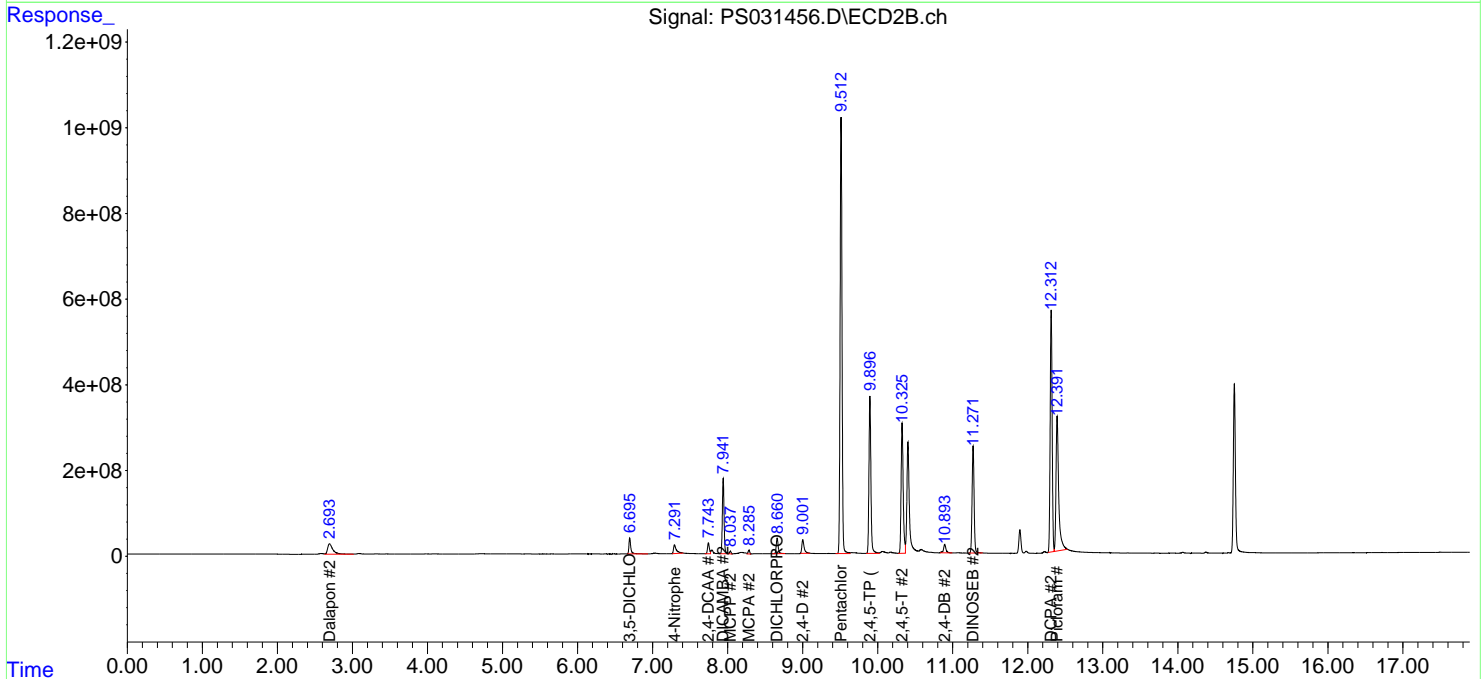
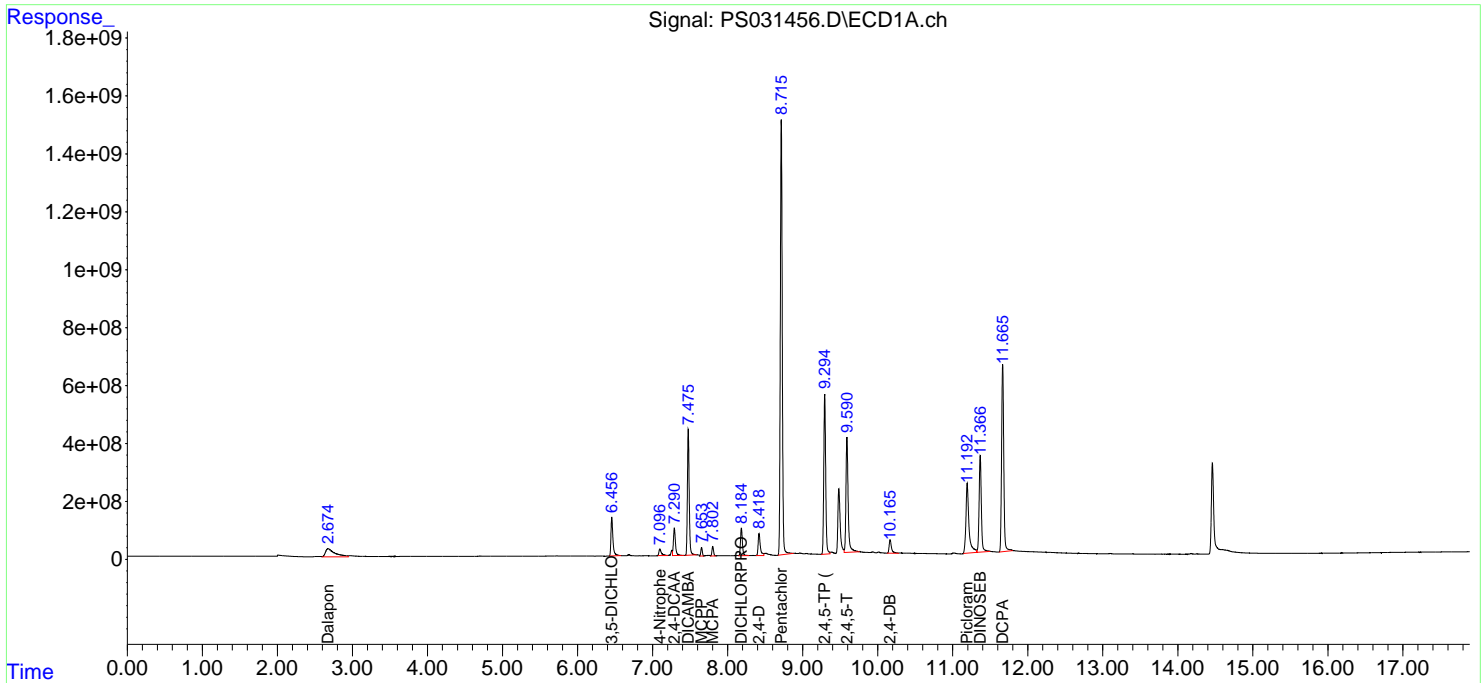
(f)=RT Delta > 1/2 Window (#)=Amounts differ by > 25% (m)=manual int.

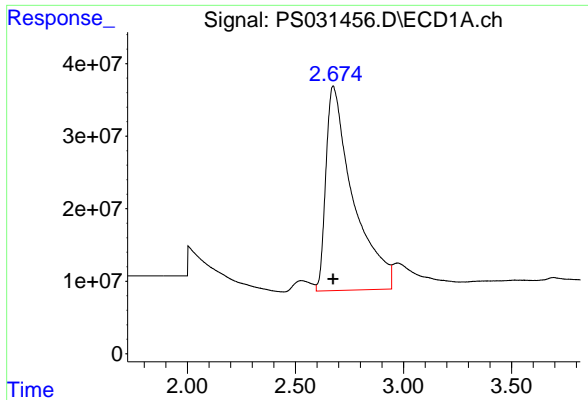
Data Path : Z:\pestpcbsrv\HPCHEM1\ECD_S\Data\PS081525\
 Data File : PS031456.D
 Signal(s) : Signal #1: ECD1A.ch Signal #2: ECD2B.ch
 Acq On : 15 Aug 2025 17:28
 Operator : AR\AJ
 Sample : PB169278BS
 Misc :
 ALS Vial : 5 Sample Multiplier: 1

Instrument :
 ECD_S
 ClientSampleId :
 PB169278BS

Integration File signal 1: autoint1.e
 Integration File signal 2: autoint2.e
 Quant Time: Aug 18 03:47:08 2025
 Quant Method : Z:\pestpcbsrv\HPCHEM1\ECD_S\Method\PS080725.M
 Quant Title : 8080.M
 QLast Update : Fri Aug 08 03:17:54 2025
 Response via : Initial Calibration
 Integrator: ChemStation

Volume Inj. : 1 µl
 Signal #1 Phase : ZB-MR1 Signal #2 Phase: ZB-MR2
 Signal #1 Info : 30M x 0.32mm x0.5 Signal #2 Info : 30M x 0.32mm x 0.25µm

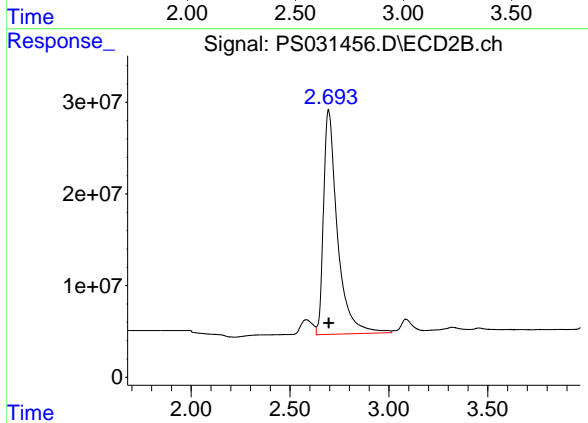




#1 Dalapon

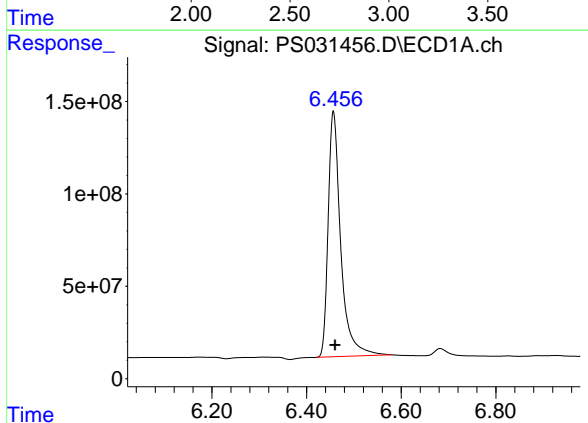
R.T.: 2.675 min
 Delta R.T.: 0.000 min
 Response: 2463587440
 Conc: 469.35 ng/ml

Instrument :
 ECD_S
 ClientSampleId :
 PB169278BS



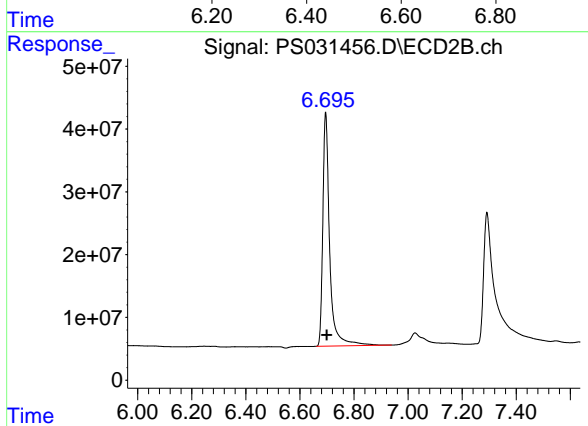
#1 Dalapon

R.T.: 2.694 min
 Delta R.T.: 0.000 min
 Response: 1202064651
 Conc: 451.73 ng/ml



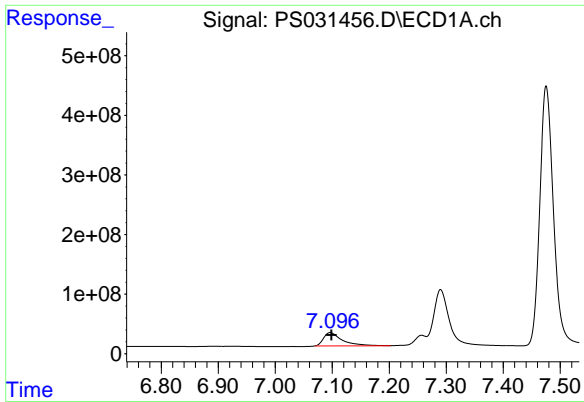
#2 3,5-DICHLOROBENZOIC ACID

R.T.: 6.457 min
 Delta R.T.: -0.004 min
 Response: 2452546684
 Conc: 519.79 ng/ml



#2 3,5-DICHLOROBENZOIC ACID

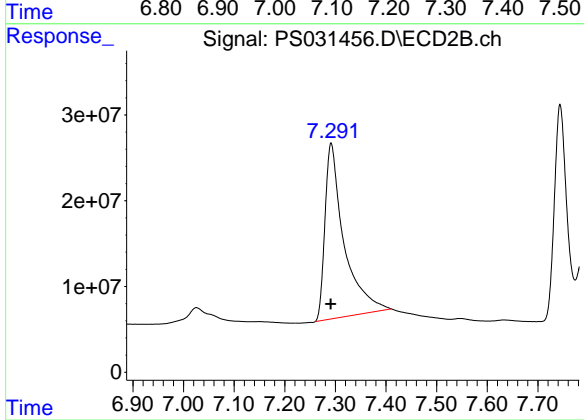
R.T.: 6.695 min
 Delta R.T.: -0.004 min
 Response: 657920351
 Conc: 486.65 ng/ml



#3 4-Nitrophenol

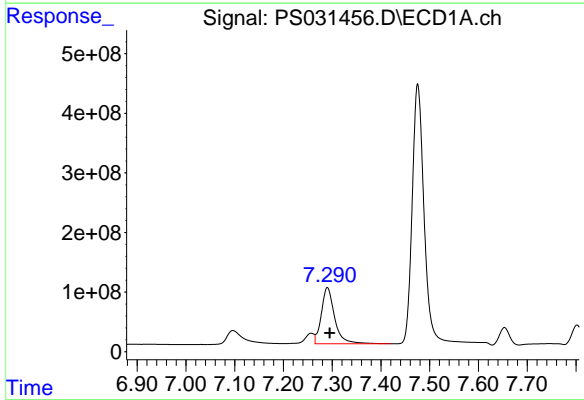
R.T.: 7.097 min
 Delta R.T.: -0.002 min
 Response: 513194283
 Conc: 497.44 ng/ml

Instrument :
 ECD_S
 ClientSampleId :
 PB169278BS



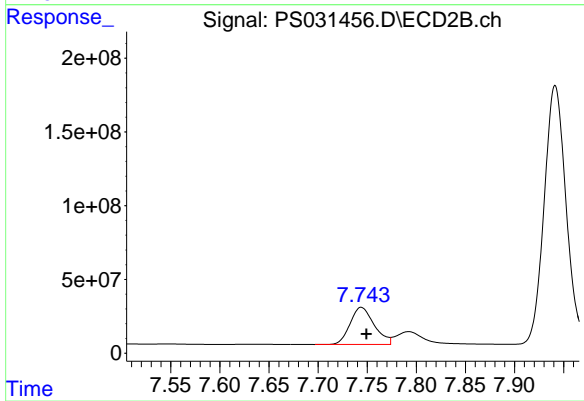
#3 4-Nitrophenol

R.T.: 7.292 min
 Delta R.T.: 0.000 min
 Response: 536321486
 Conc: 426.71 ng/ml



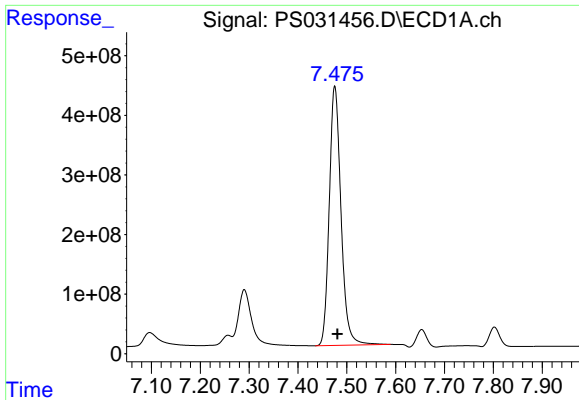
#4 2,4-DCAA

R.T.: 7.290 min
 Delta R.T.: -0.005 min
 Response: 1780632317
 Conc: 561.01 ng/ml



#4 2,4-DCAA

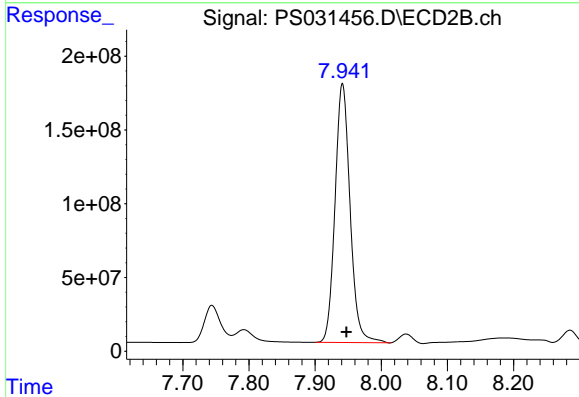
R.T.: 7.744 min
 Delta R.T.: -0.005 min
 Response: 430378115
 Conc: 509.12 ng/ml



#5 DICAMBA

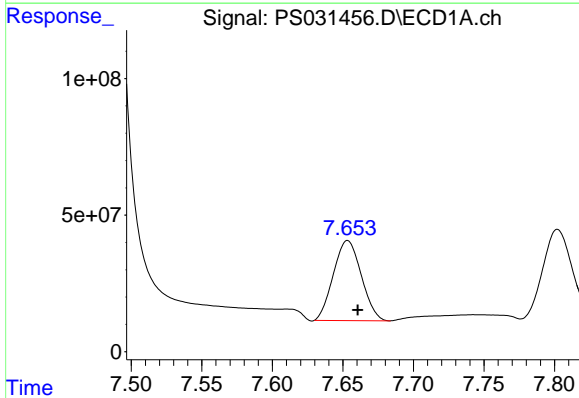
R.T.: 7.475 min
 Delta R.T.: -0.005 min
 Response: 7262170891
 Conc: 519.97 ng/ml

Instrument :
 ECD_S
 ClientSampleId :
 PB169278BS



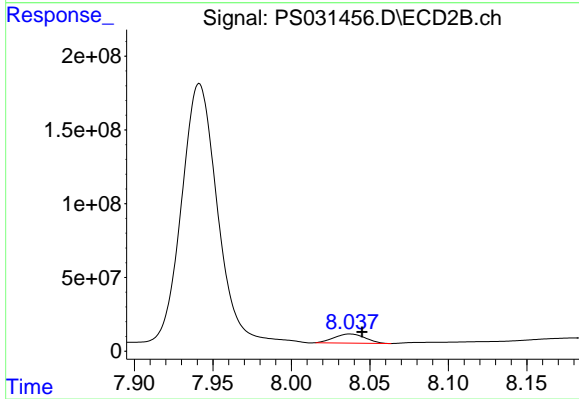
#5 DICAMBA

R.T.: 7.941 min
 Delta R.T.: -0.006 min
 Response: 2773336908
 Conc: 488.03 ng/ml



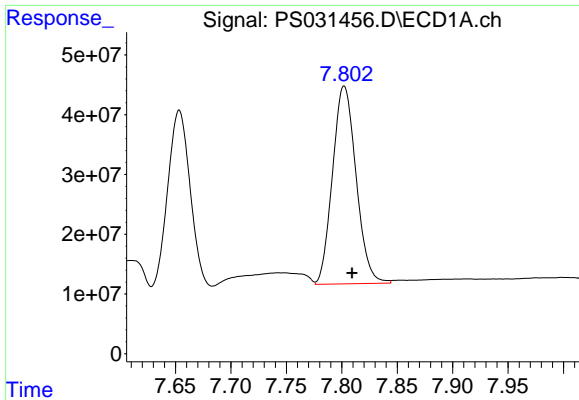
#6 MCP

R.T.: 7.653 min
 Delta R.T.: -0.007 min
 Response: 403997722
 Conc: 50.22 ug/ml



#6 MCP

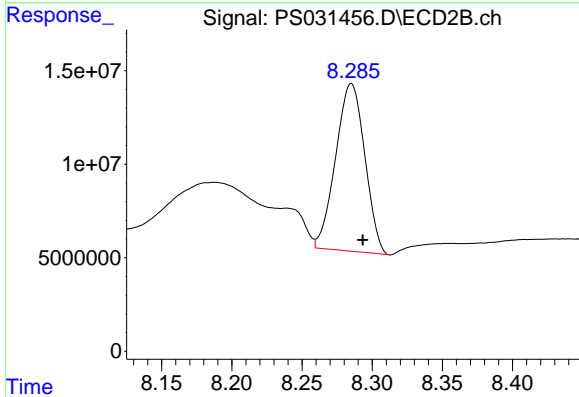
R.T.: 8.037 min
 Delta R.T.: -0.008 min
 Response: 84283294
 Conc: 47.68 ug/ml



#7 MCPA

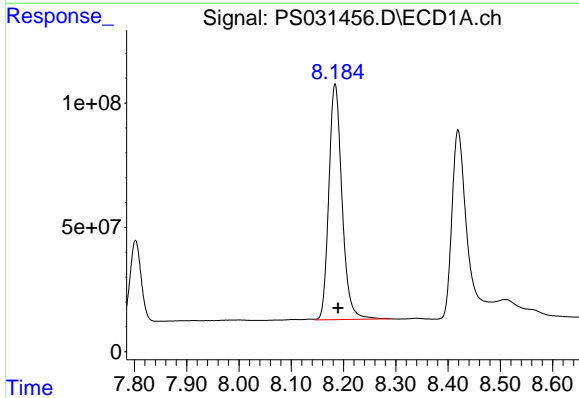
R.T.: 7.802 min
Delta R.T.: -0.007 min
Response: 489877009
Conc: 49.18 ug/ml

Instrument :
ECD_S
ClientSampleId :
PB169278BS



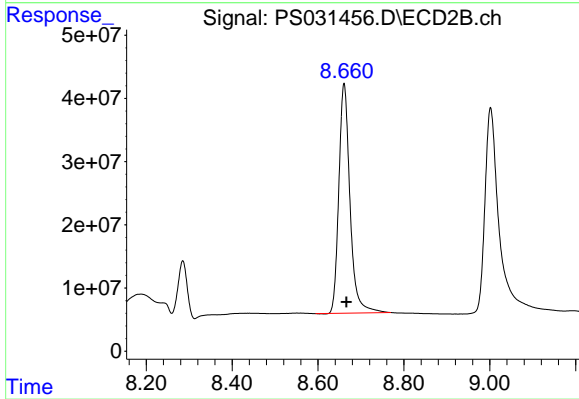
#7 MCPA

R.T.: 8.285 min
Delta R.T.: -0.008 min
Response: 129563611
Conc: 46.18 ug/ml



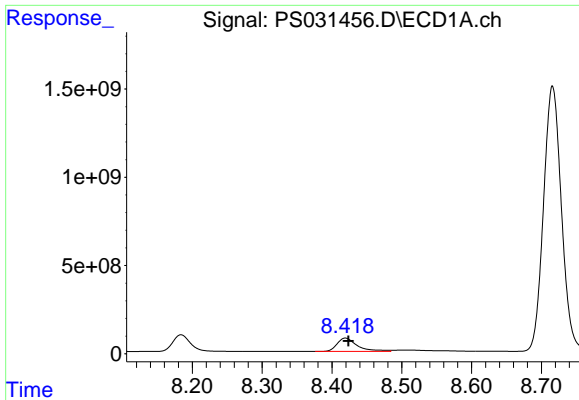
#8 DICHLORPROP

R.T.: 8.184 min
Delta R.T.: -0.006 min
Response: 1660686114
Conc: 523.47 ng/ml



#8 DICHLORPROP

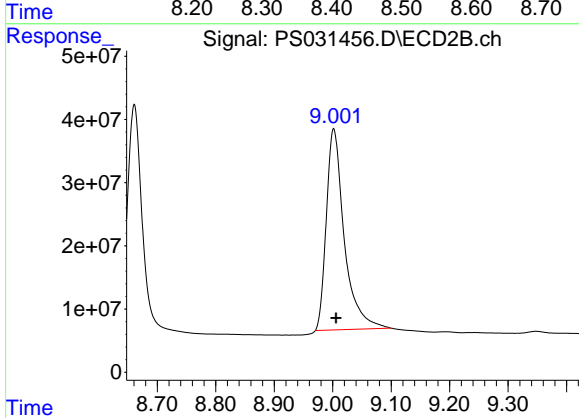
R.T.: 8.661 min
Delta R.T.: -0.005 min
Response: 655779640
Conc: 491.21 ng/ml



#9 2,4-D

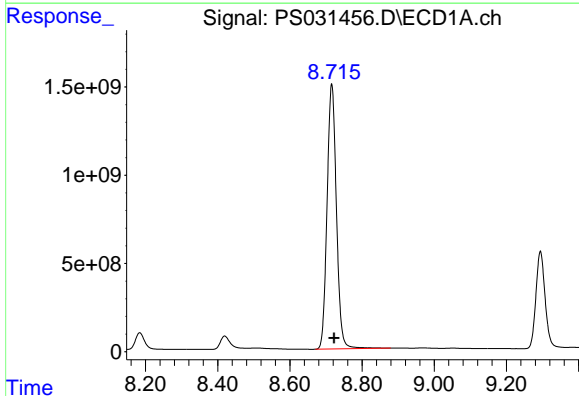
R.T.: 8.419 min
 Delta R.T.: -0.005 min
 Response: 1535543750
 Conc: 533.77 ng/ml

Instrument :
 ECD_S
 ClientSampleId :
 PB169278BS



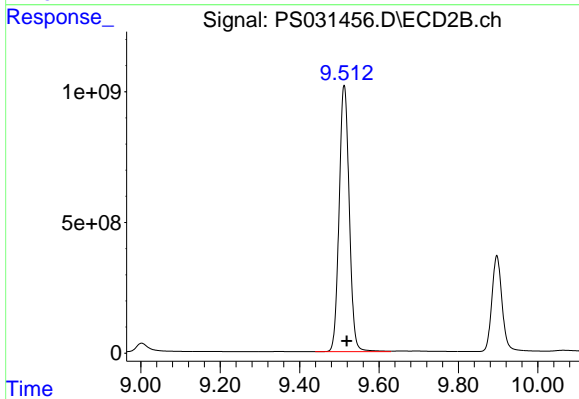
#9 2,4-D

R.T.: 9.002 min
 Delta R.T.: -0.004 min
 Response: 678738152
 Conc: 475.54 ng/ml



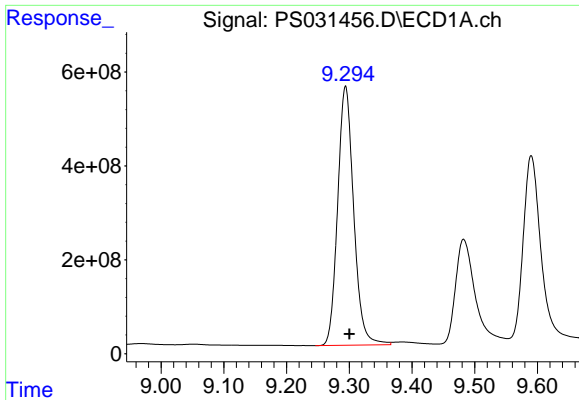
#10 Pentachlorophenol

R.T.: 8.716 min
 Delta R.T.: -0.006 min
 Response: 26991514598
 Conc: 562.18 ng/ml



#10 Pentachlorophenol

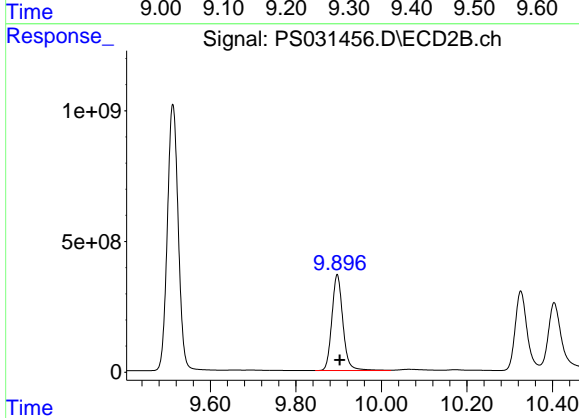
R.T.: 9.512 min
 Delta R.T.: -0.006 min
 Response: 17993468838
 Conc: 516.63 ng/ml



#11 2,4,5-TP (SILVEX)

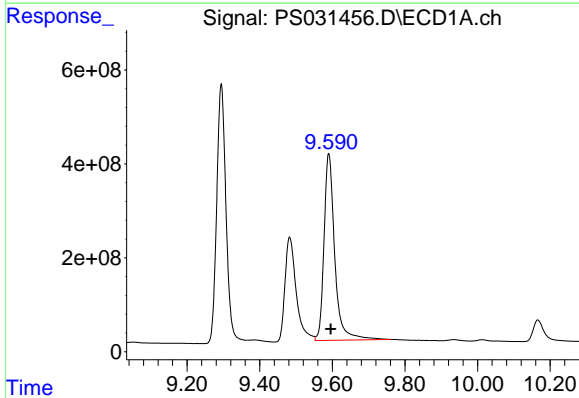
R.T.: 9.294 min
 Delta R.T.: -0.006 min
 Response: 9796851960
 Conc: 546.59 ng/ml

Instrument :
 ECD_S
 ClientSampleId :
 PB169278BS



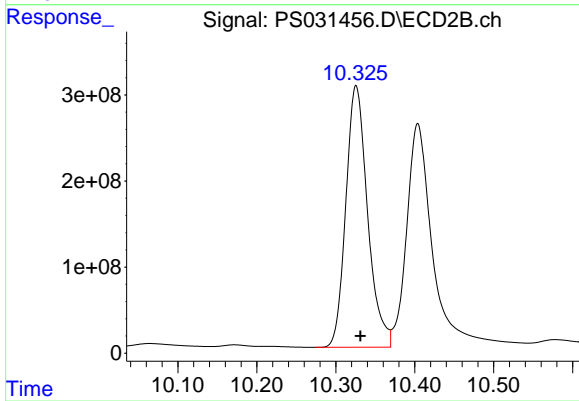
#11 2,4,5-TP (SILVEX)

R.T.: 9.897 min
 Delta R.T.: -0.006 min
 Response: 6593713981
 Conc: 502.72 ng/ml



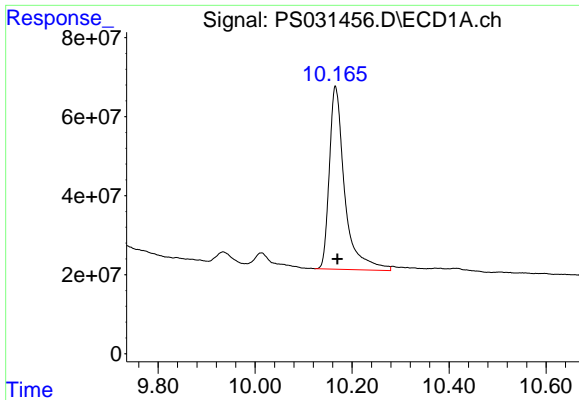
#12 2,4,5-T

R.T.: 9.590 min
 Delta R.T.: -0.005 min
 Response: 8148547137
 Conc: 556.17 ng/ml



#12 2,4,5-T

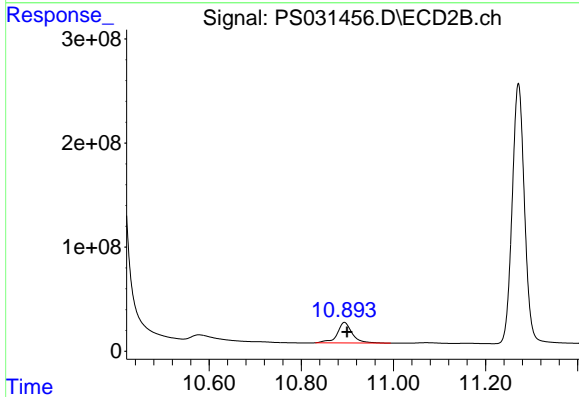
R.T.: 10.326 min
 Delta R.T.: -0.005 min
 Response: 5820125993
 Conc: 491.57 ng/ml



#13 2,4-DB

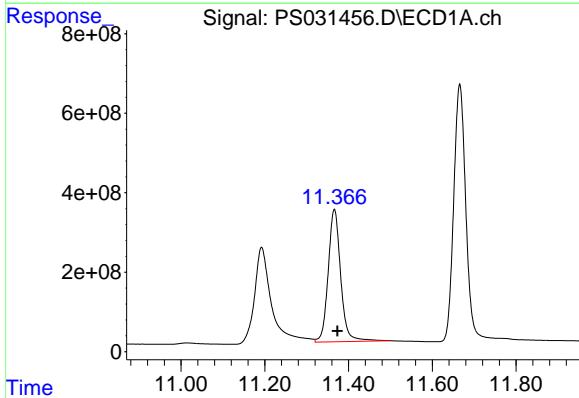
R.T.: 10.166 min
Delta R.T.: -0.005 min
Response: 1017697014
Conc: 529.58 ng/ml

Instrument :
ECD_S
ClientSampleId :
PB169278BS



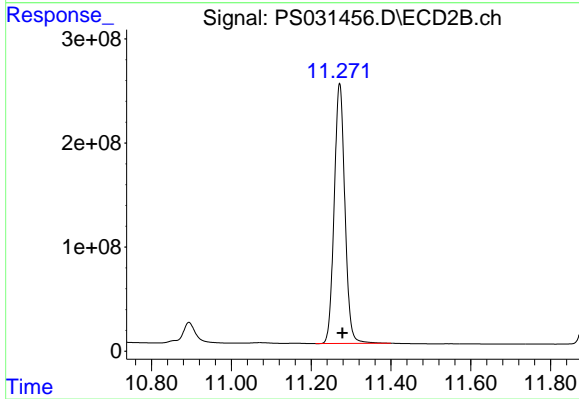
#13 2,4-DB

R.T.: 10.894 min
Delta R.T.: -0.006 min
Response: 445464127
Conc: 461.69 ng/ml



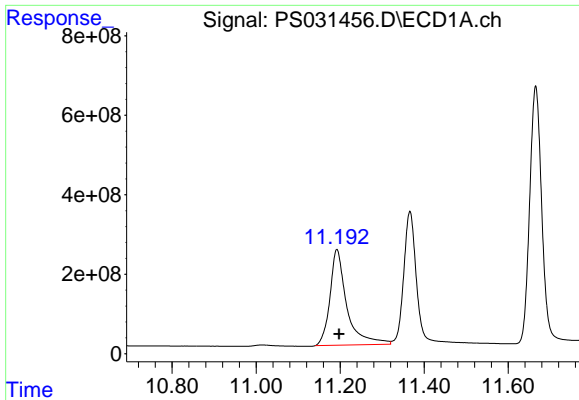
#14 DINOSEB

R.T.: 11.366 min
Delta R.T.: -0.007 min
Response: 6914359607
Conc: 545.36 ng/ml



#14 DINOSEB

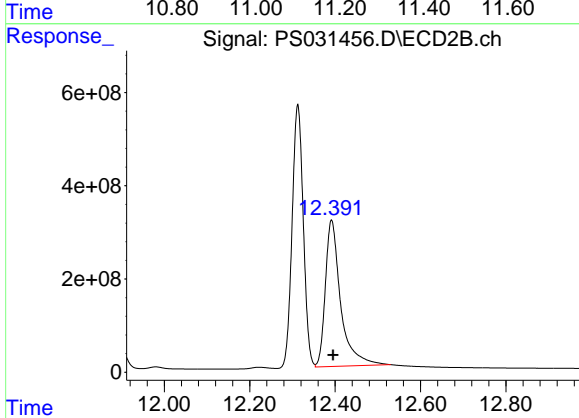
R.T.: 11.271 min
Delta R.T.: -0.007 min
Response: 4643303297
Conc: 490.99 ng/ml



#15 Picloram

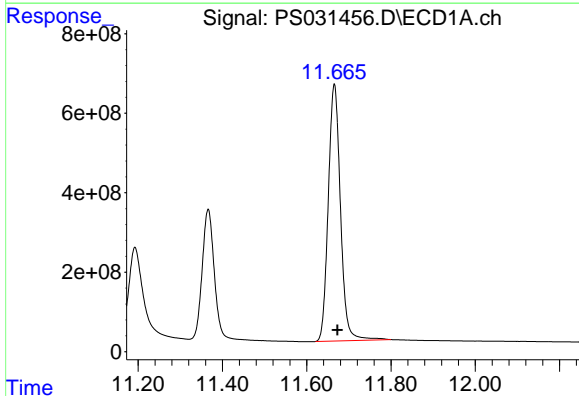
R.T.: 11.192 min
 Delta R.T.: -0.005 min
 Response: 6747552053
 Conc: 516.89 ng/ml

Instrument : ECD_S
 ClientSampleId : PB169278BS



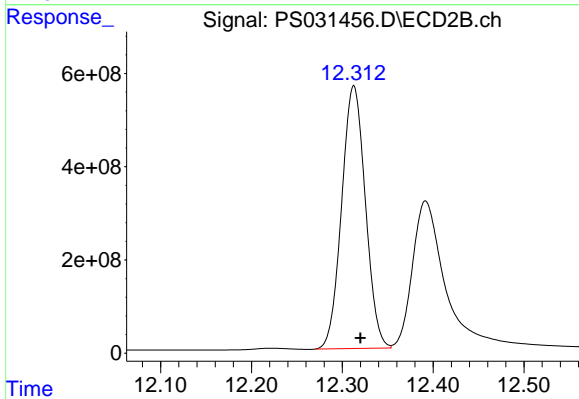
#15 Picloram

R.T.: 12.392 min
 Delta R.T.: -0.004 min
 Response: 7825596744
 Conc: 446.42 ng/ml



#16 DCPA

R.T.: 11.666 min
 Delta R.T.: -0.007 min
 Response: 13011955191
 Conc: 571.22 ng/ml



#16 DCPA

R.T.: 12.313 min
 Delta R.T.: -0.007 min
 Response: 10226925351
 Conc: 519.12 ng/ml