

Data Path : Z:\pestpcbsrv\HPCHEM1\ECD\_S\Data\PS081525\  
 Data File : PS031463.D  
 Signal(s) : Signal #1: ECD1A.ch Signal #2: ECD2B.ch  
 Acq On : 15 Aug 2025 21:05  
 Operator : AR\AJ  
 Sample : Q2832-02MSD  
 Misc :  
 ALS Vial : 10 Sample Multiplier: 1

Instrument :  
 ECD\_S  
 ClientSampleId :  
 TG-S01MSD

Integration File signal 1: autoint1.e  
 Integration File signal 2: autoint2.e  
 Quant Time: Aug 18 03:49:26 2025  
 Quant Method : Z:\pestpcbsrv\HPCHEM1\ECD\_S\Method\PS080725.M  
 Quant Title : 8080.M  
 QLast Update : Fri Aug 08 03:17:54 2025  
 Response via : Initial Calibration  
 Integrator: ChemStation

Volume Inj. : 1 µl  
 Signal #1 Phase : ZB-MR2 Signal #2 Phase: ZB-MR2  
 Signal #1 Info : 30M x 0.32mm x0.5 Signal #2 Info : 30M x 0.32mm x 0.25µm

Compound	RT#1	RT#2	Resp#1	Resp#2	ng/ml	ng/ml
-----						
System Monitoring Compounds						
4) S 2,4-DCAA	7.289	7.743	2475.6E6	743.7E6	779.973	879.735
Target Compounds						
1) T Dalapon	2.675	2.699	3069.8E6	1457.7E6	584.850	547.814
2) T 3,5-DICHL...	6.456	6.695	2476.2E6	623.7E6	524.809	461.309
3) T 4-Nitroph...	7.101	7.308	13728175	23678952	13.307	18.839 #
5) T DICAMBA	7.475	7.942	6888.1E6	2779.2E6	493.190	489.066
6) T MCPP	7.654	8.040	553.8E6	114.1E6	68.841	64.536
7) T MCPA	7.804	8.289	845.9E6	243.9E6	84.915	86.924
8) T DICHLORPROP	8.182	8.659	2271.0E6	893.5E6	715.853	669.248
9) T 2,4-D	8.415	8.997	2646.8E6	1137.5E6	920.035	796.938
10) T Pentachlo...	8.715	9.512	25007.9E6	16772.4E6	520.864	481.572
11) T 2,4,5-TP ...	9.292	9.897	13706.9E6	15975.7E6	764.735	1218.028 #
12) T 2,4,5-T	9.586	10.324	12537.9E6	9150.0E6	855.758	772.823
13) T 2,4-DB	10.162	10.891	1613.6E6	729.0E6	839.671	755.577
14) T DINOSEB	11.365	11.271	5395.6E6	3527.2E6	425.572	372.971
15) T Picloram	11.189	12.388	7118.9E6	8886.2E6	545.340	506.924
16) T DCPA	11.663	12.313	12202.0E6	10904.7E6	535.661	553.525
-----						

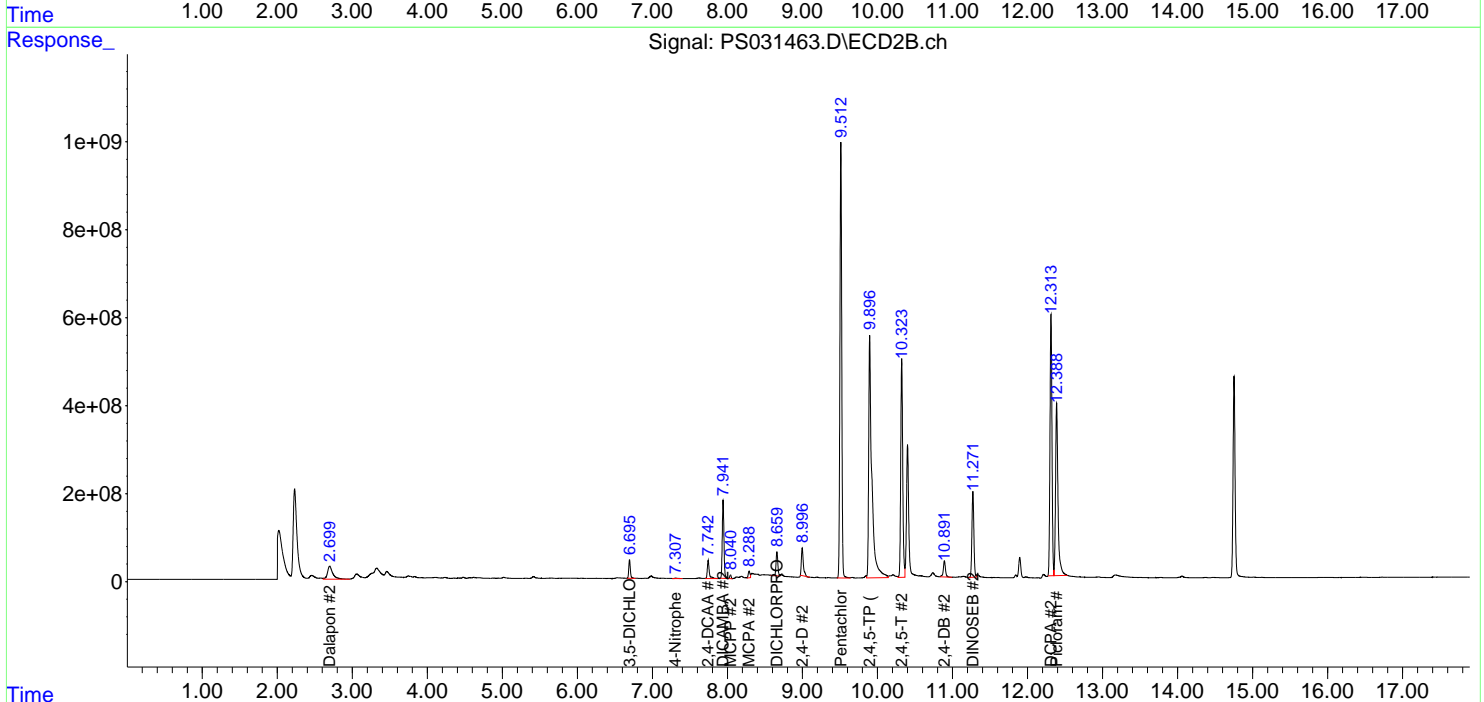
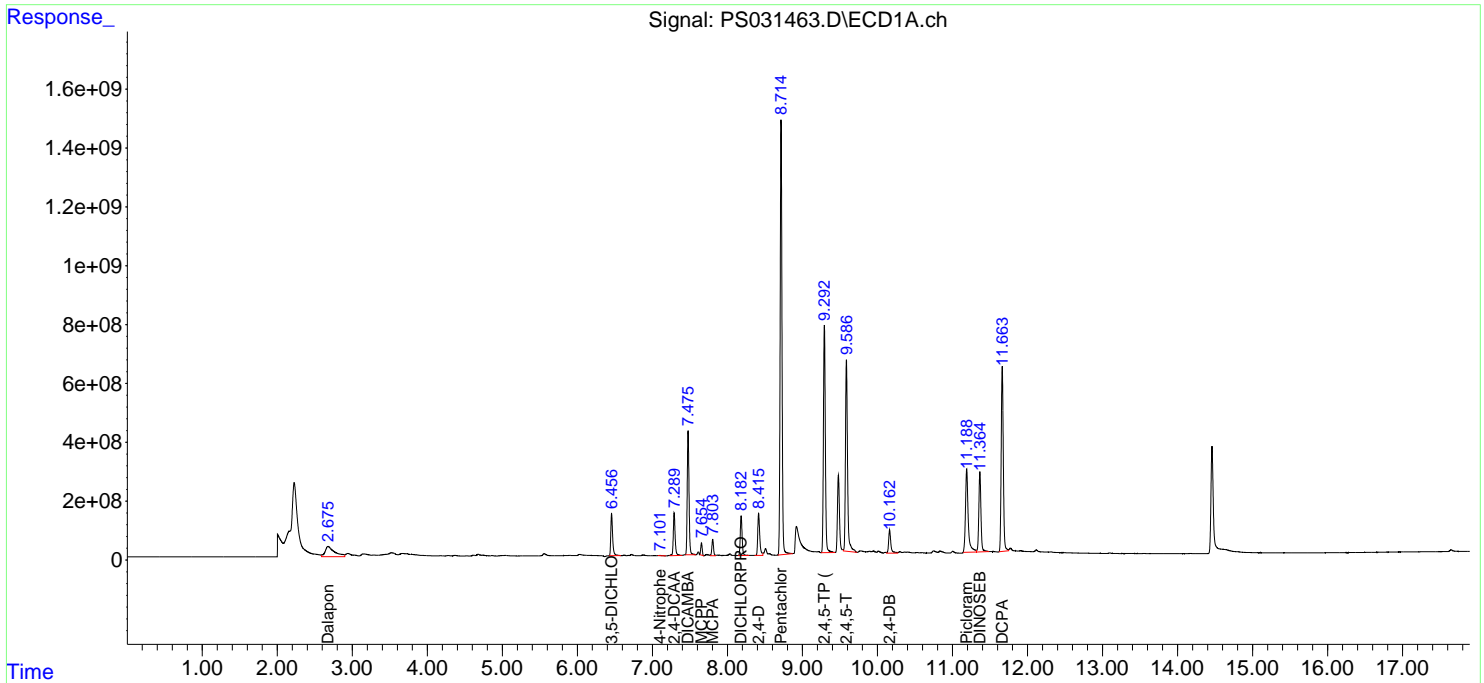
(f)=RT Delta > 1/2 Window (#)=Amounts differ by > 25% (m)=manual int.

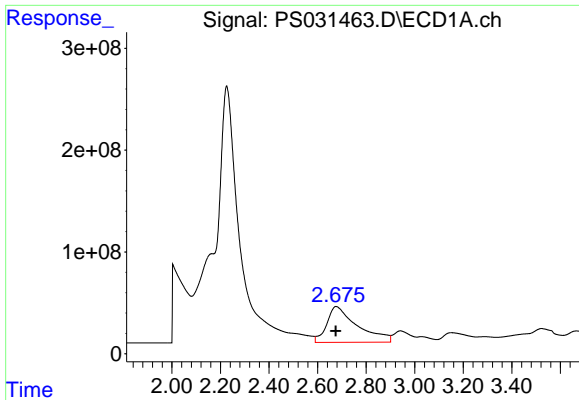
Data Path : Z:\pestpcbsrv\HPCHEM1\ECD\_S\Data\PS081525\  
 Data File : PS031463.D  
 Signal(s) : Signal #1: ECD1A.ch Signal #2: ECD2B.ch  
 Acq On : 15 Aug 2025 21:05  
 Operator : AR\AJ  
 Sample : Q2832-02MSD  
 Misc :  
 ALS Vial : 10 Sample Multiplier: 1

Instrument :  
 ECD\_S  
 ClientSampleId :  
 TG-S01MSD

Integration File signal 1: autoint1.e  
 Integration File signal 2: autoint2.e  
 Quant Time: Aug 18 03:49:26 2025  
 Quant Method : Z:\pestpcbsrv\HPCHEM1\ECD\_S\Method\PS080725.M  
 Quant Title : 8080.M  
 QLast Update : Fri Aug 08 03:17:54 2025  
 Response via : Initial Calibration  
 Integrator: ChemStation

Volume Inj. : 1 µl  
 Signal #1 Phase : ZB-MR1 Signal #2 Phase: ZB-MR2  
 Signal #1 Info : 30M x 0.32mm x0.5 Signal #2 Info : 30M x 0.32mm x 0.25µm

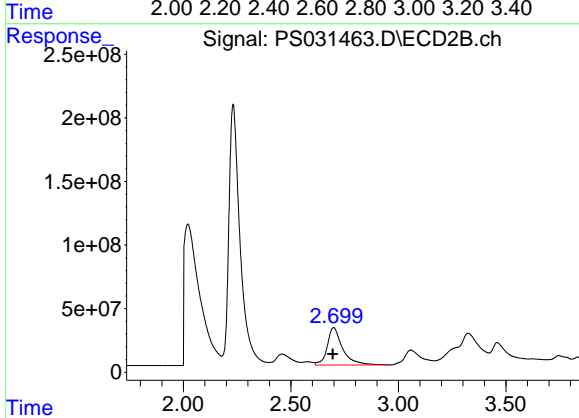




#1 Dalapon

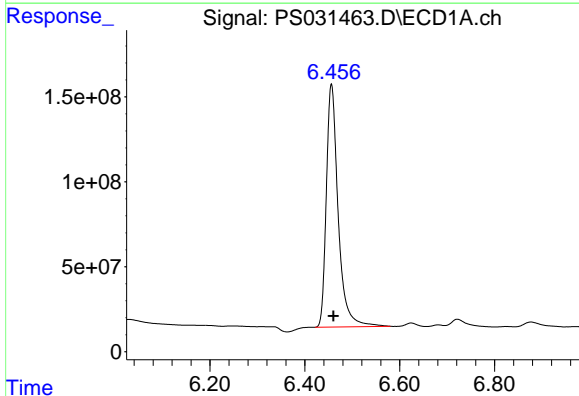
R.T.: 2.675 min  
Delta R.T.: 0.001 min  
Response: 3069840830  
Conc: 584.85 ng/ml

Instrument :  
ECD\_S  
ClientSampleId :  
TG-S01MSD



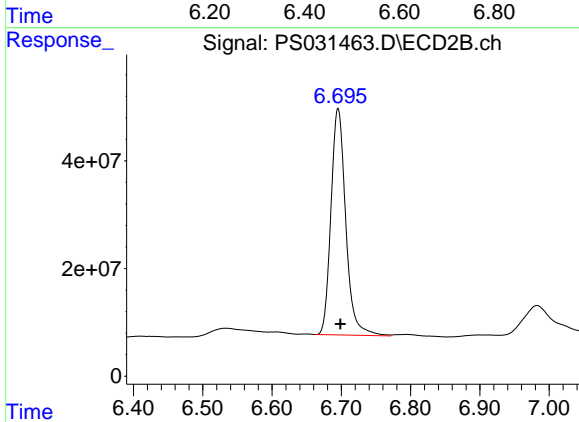
#1 Dalapon

R.T.: 2.699 min  
Delta R.T.: 0.004 min  
Response: 1457739431  
Conc: 547.81 ng/ml



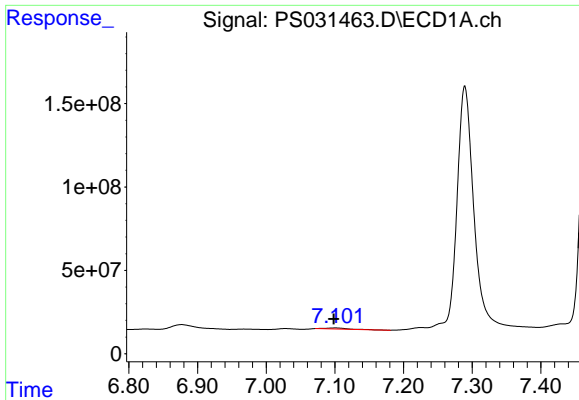
#2 3,5-DICHLOROBENZOIC ACID

R.T.: 6.456 min  
Delta R.T.: -0.004 min  
Response: 2476211764  
Conc: 524.81 ng/ml



#2 3,5-DICHLOROBENZOIC ACID

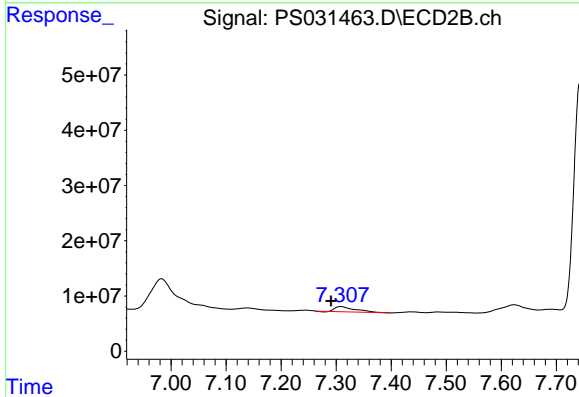
R.T.: 6.695 min  
Delta R.T.: -0.004 min  
Response: 623657262  
Conc: 461.31 ng/ml



#3 4-Nitrophenol

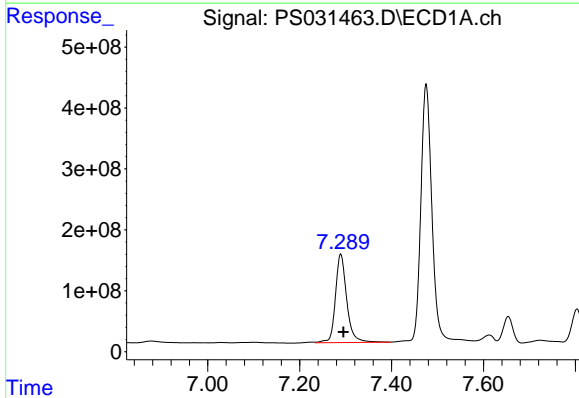
R.T.: 7.101 min  
 Delta R.T.: 0.002 min  
 Response: 13728175  
 Conc: 13.31 ng/ml

Instrument :  
 ECD\_S  
 ClientSampleId :  
 TG-S01MSD



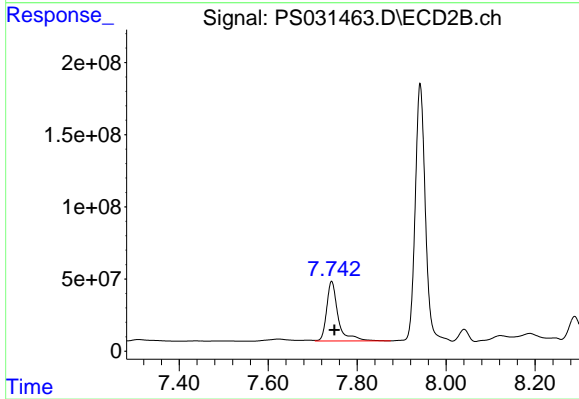
#3 4-Nitrophenol

R.T.: 7.308 min  
 Delta R.T.: 0.018 min  
 Response: 23678952  
 Conc: 18.84 ng/ml



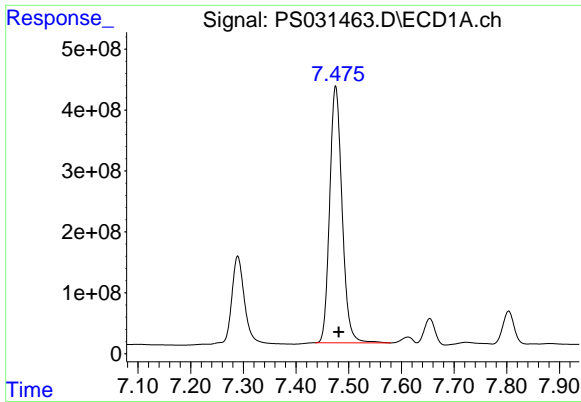
#4 2,4-DCAA

R.T.: 7.289 min  
 Delta R.T.: -0.006 min  
 Response: 2475624991  
 Conc: 779.97 ng/ml



#4 2,4-DCAA

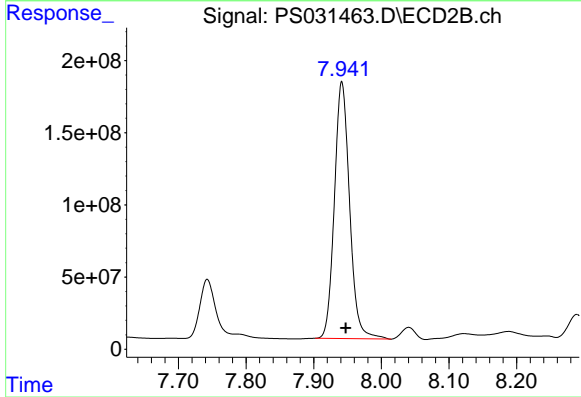
R.T.: 7.743 min  
 Delta R.T.: -0.007 min  
 Response: 743674677  
 Conc: 879.73 ng/ml



#5 DICAMBA

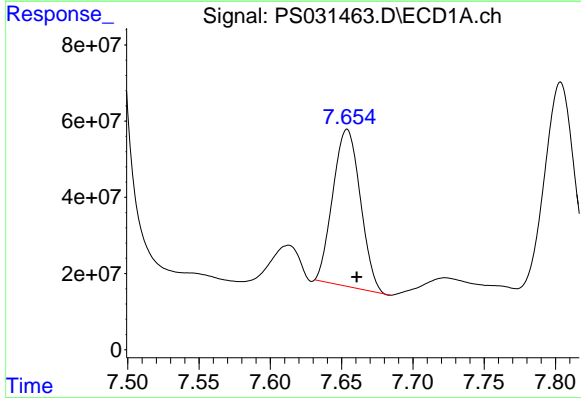
R.T.: 7.475 min  
 Delta R.T.: -0.006 min  
 Response: 6888117071  
 Conc: 493.19 ng/ml

Instrument :  
 ECD\_S  
 ClientSampleId :  
 TG-S01MSD



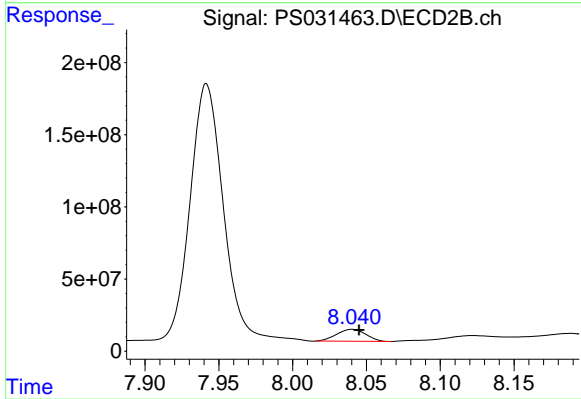
#5 DICAMBA

R.T.: 7.942 min  
 Delta R.T.: -0.006 min  
 Response: 2779209970  
 Conc: 489.07 ng/ml



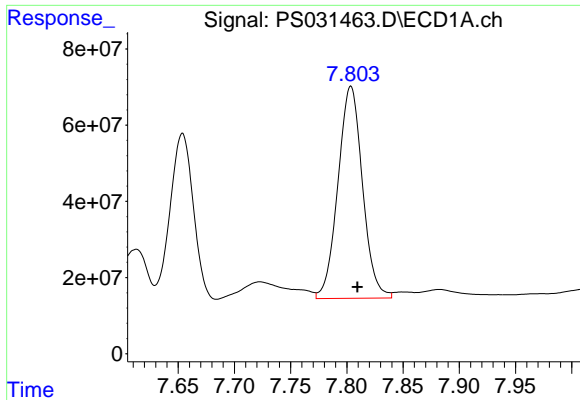
#6 MCP

R.T.: 7.654 min  
 Delta R.T.: -0.007 min  
 Response: 553816251  
 Conc: 68.84 ug/ml



#6 MCP

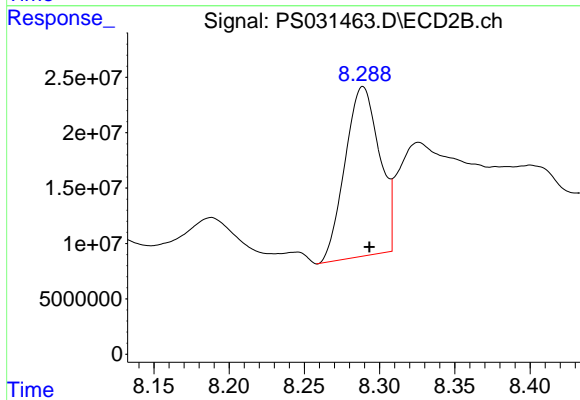
R.T.: 8.040 min  
 Delta R.T.: -0.005 min  
 Response: 114088088  
 Conc: 64.54 ug/ml



#7 MCPA

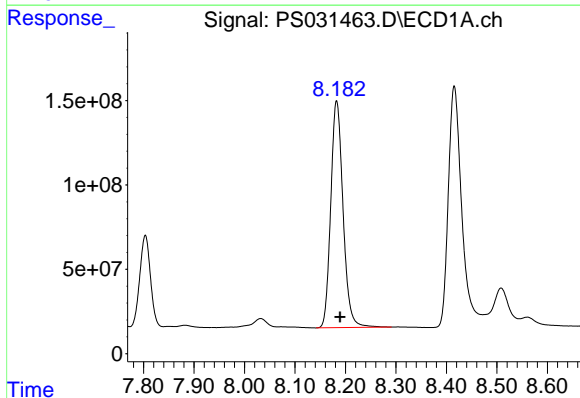
R.T.: 7.804 min  
 Delta R.T.: -0.006 min  
 Response: 845865055  
 Conc: 84.92 ug/ml

Instrument :  
 ECD\_S  
 ClientSampleId :  
 TG-S01MSD



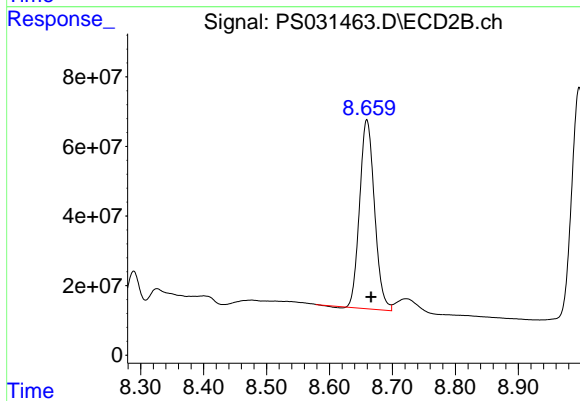
#7 MCPA

R.T.: 8.289 min  
 Delta R.T.: -0.004 min  
 Response: 243866564  
 Conc: 86.92 ug/ml



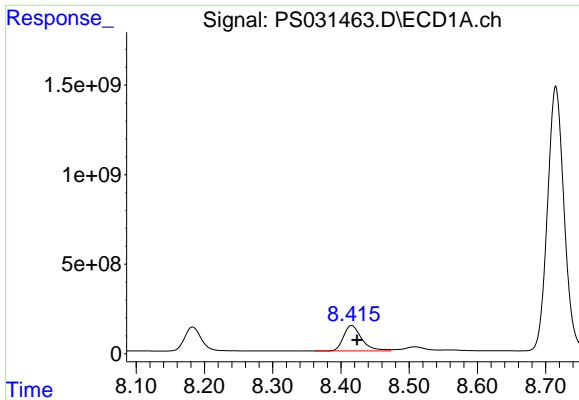
#8 DICHLORPROP

R.T.: 8.182 min  
 Delta R.T.: -0.007 min  
 Response: 2270993358  
 Conc: 715.85 ng/ml



#8 DICHLORPROP

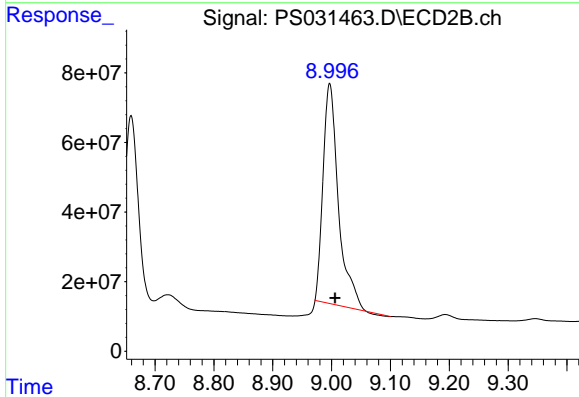
R.T.: 8.659 min  
 Delta R.T.: -0.007 min  
 Response: 893468117  
 Conc: 669.25 ng/ml



#9 2,4-D

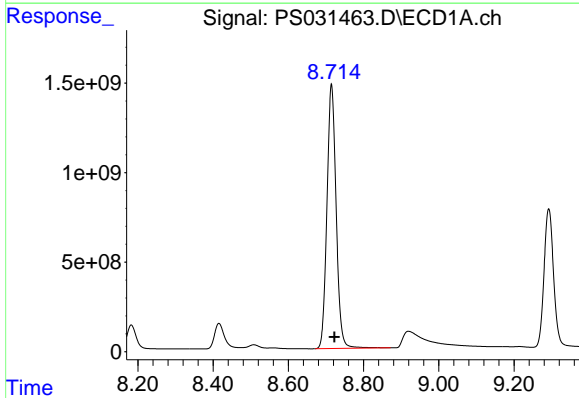
R.T.: 8.415 min  
 Delta R.T.: -0.008 min  
 Response: 2646770961  
 Conc: 920.04 ng/ml

Instrument :  
 ECD\_S  
 ClientSampleId :  
 TG-S01MSD



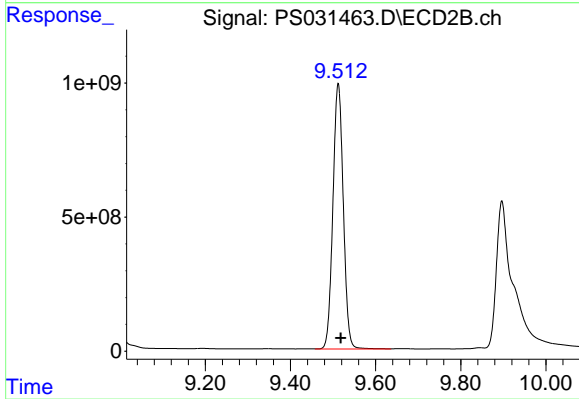
#9 2,4-D

R.T.: 8.997 min  
 Delta R.T.: -0.009 min  
 Response: 1137459283  
 Conc: 796.94 ng/ml



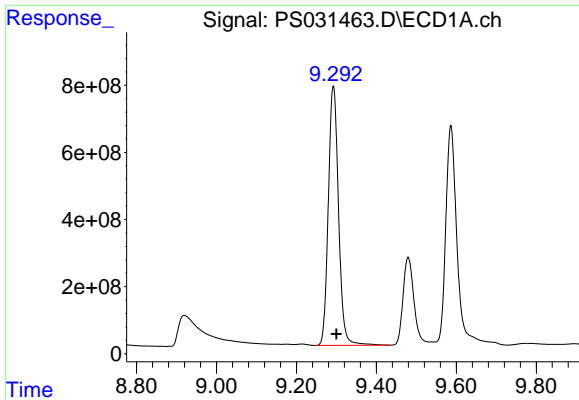
#10 Pentachlorophenol

R.T.: 8.715 min  
 Delta R.T.: -0.007 min  
 Response: 25007922792  
 Conc: 520.86 ng/ml



#10 Pentachlorophenol

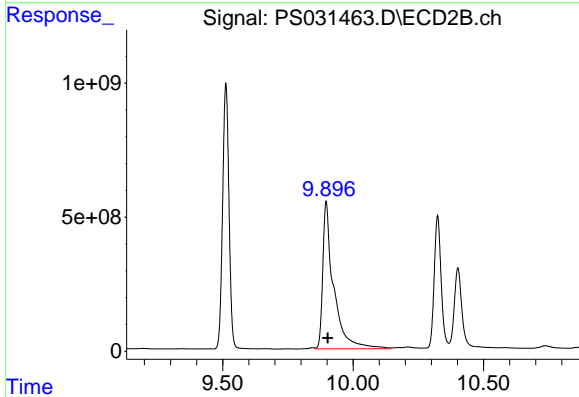
R.T.: 9.512 min  
 Delta R.T.: -0.006 min  
 Response: 16772381366  
 Conc: 481.57 ng/ml



#11 2,4,5-TP (SILVEX)

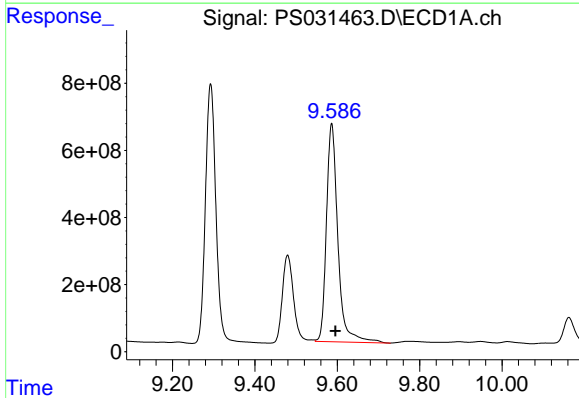
R.T.: 9.292 min  
 Delta R.T.: -0.008 min  
 Response: 13706889691  
 Conc: 764.74 ng/ml

Instrument :  
 ECD\_S  
 ClientSampleId :  
 TG-S01MSD



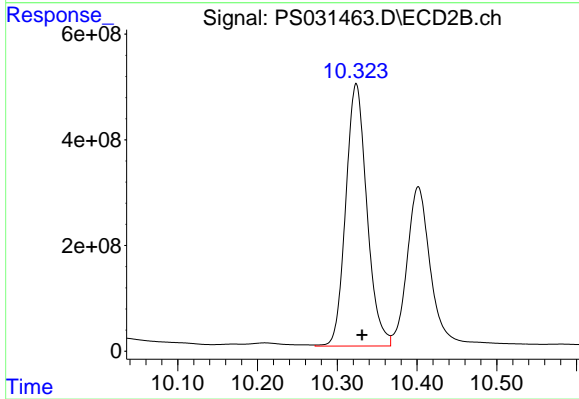
#11 2,4,5-TP (SILVEX)

R.T.: 9.897 min  
 Delta R.T.: -0.006 min  
 Response: 15975687861  
 Conc: 1218.03 ng/ml



#12 2,4,5-T

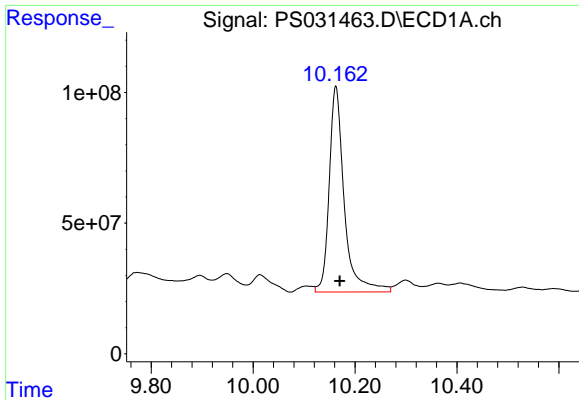
R.T.: 9.586 min  
 Delta R.T.: -0.009 min  
 Response: 12537903073  
 Conc: 855.76 ng/ml



#12 2,4,5-T

R.T.: 10.324 min  
 Delta R.T.: -0.007 min  
 Response: 9150037207  
 Conc: 772.82 ng/ml

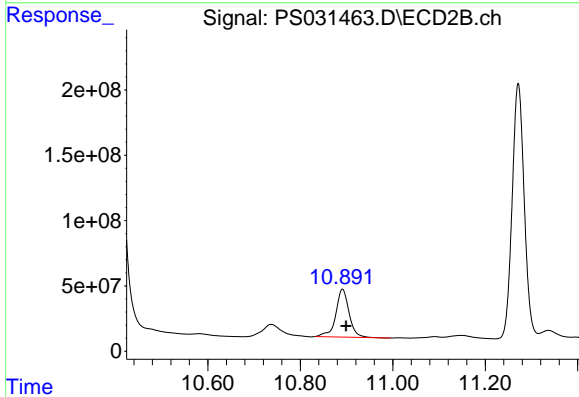




#13 2,4-DB

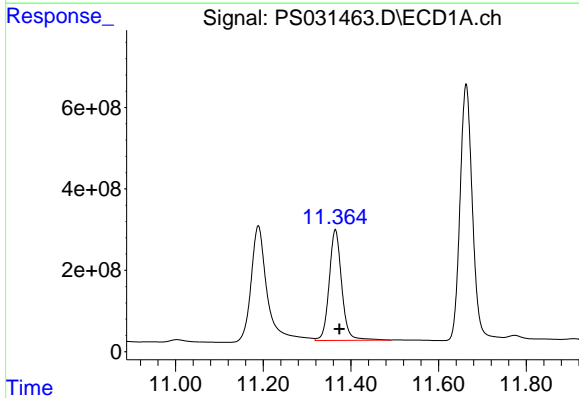
R.T.: 10.162 min  
 Delta R.T.: -0.008 min  
 Response: 1613612296  
 Conc: 839.67 ng/ml

Instrument :  
 ECD\_S  
 ClientSampleId :  
 TG-S01MSD



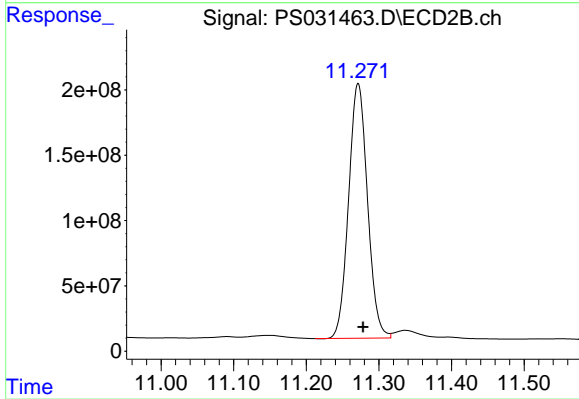
#13 2,4-DB

R.T.: 10.891 min  
 Delta R.T.: -0.008 min  
 Response: 729015488  
 Conc: 755.58 ng/ml



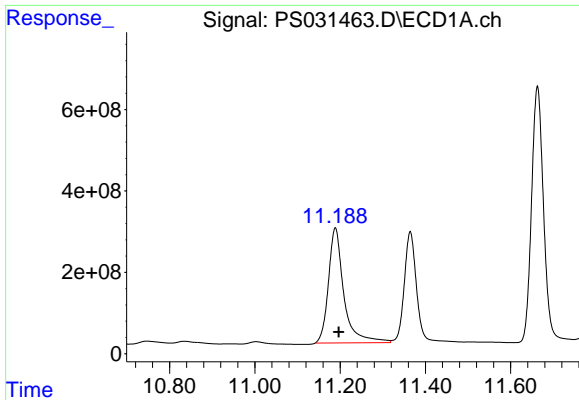
#14 DINOSEB

R.T.: 11.365 min  
 Delta R.T.: -0.009 min  
 Response: 5395604992  
 Conc: 425.57 ng/ml



#14 DINOSEB

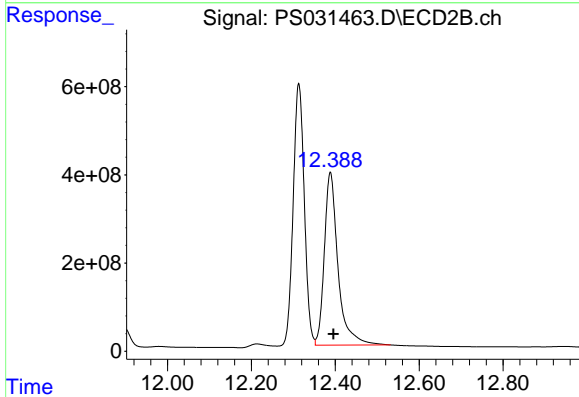
R.T.: 11.271 min  
 Delta R.T.: -0.007 min  
 Response: 3527164103  
 Conc: 372.97 ng/ml



#15 Picloram

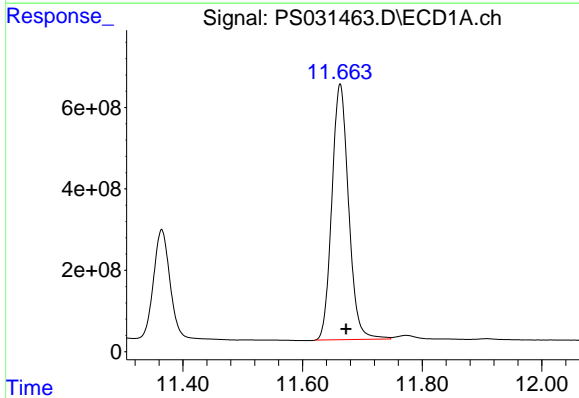
R.T.: 11.189 min  
 Delta R.T.: -0.008 min  
 Response: 7118949633  
 Conc: 545.34 ng/ml

Instrument :  
 ECD\_S  
 ClientSampleId :  
 TG-S01MSD



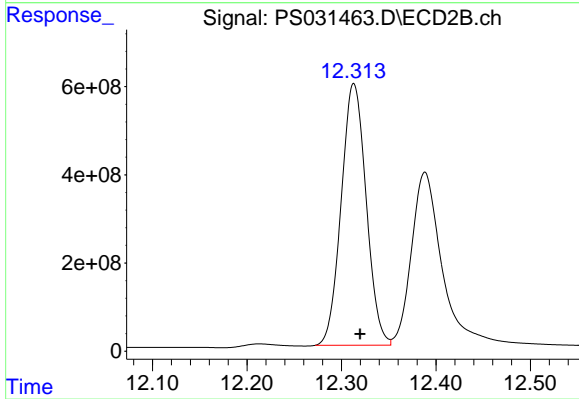
#15 Picloram

R.T.: 12.388 min  
 Delta R.T.: -0.007 min  
 Response: 8886241793  
 Conc: 506.92 ng/ml



#16 DCPA

R.T.: 11.663 min  
 Delta R.T.: -0.010 min  
 Response: 12201996315  
 Conc: 535.66 ng/ml



#16 DCPA

R.T.: 12.313 min  
 Delta R.T.: -0.007 min  
 Response: 10904654299  
 Conc: 553.52 ng/ml